



P.O.B.
X=1,849,778.40
Y= 269,892.58

BLOCK 8

BLOCK 7

BLOCK 9

BLOCK 10

SL 16414

SL 16415

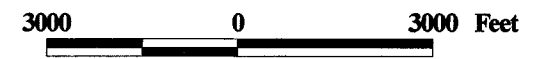
SL 15414

TR 32841
754.46 +/- ACS.
NOV., 2000

LA
USA

OFFICIAL COPY
OFFICE OF MINERAL RESOURCES
DEPT. OF NATURAL RESOURCES
DO NOT REMOVE

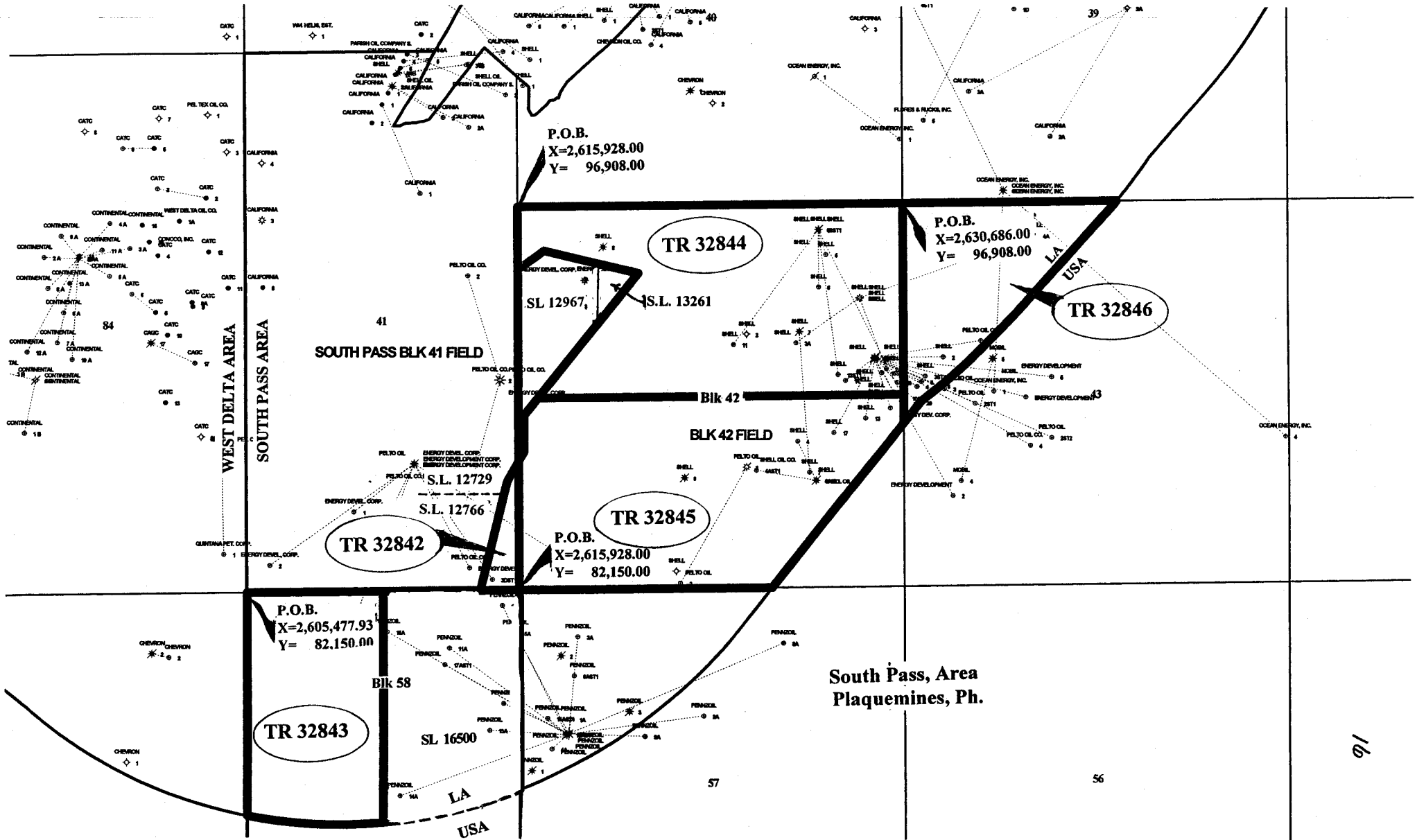
**EUGENE ISLAND AREA, REVISED
IBERIA PARISH**

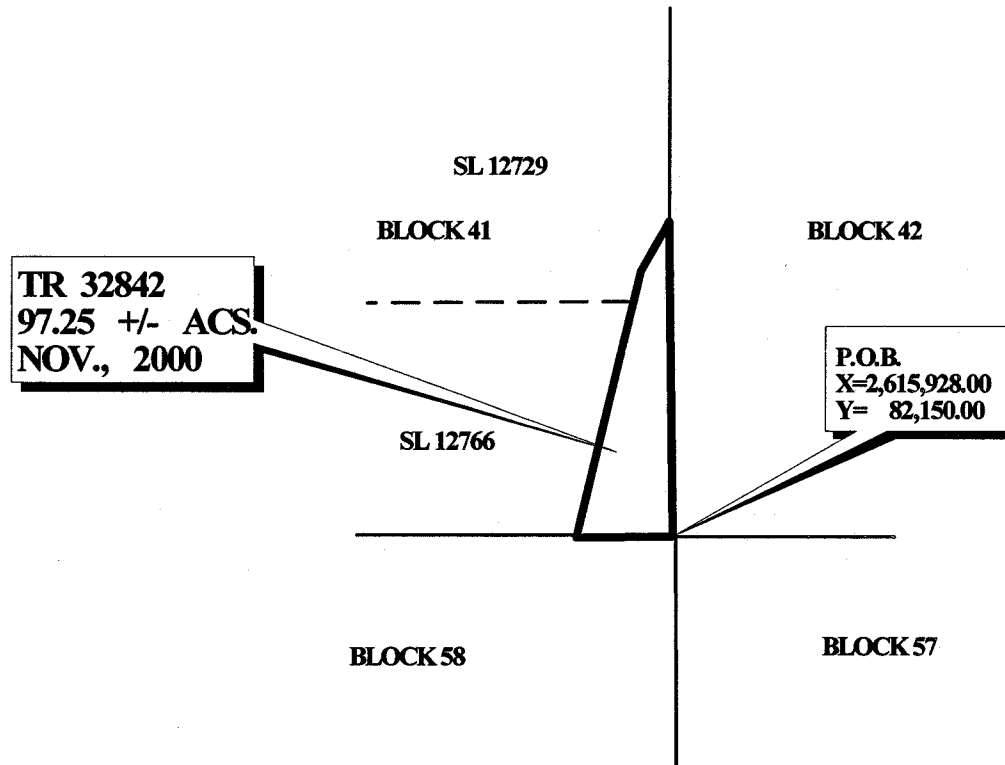


NOT TO BE USED WITH A PORTION BID
FOR INFORMATIONAL PURPOSES ONLY!

& A Map Services
Division of PI

MAP NOT TO SCALE





OFFICIAL COPY
OFFICE OF MINERAL RESOURCES
DEPT. OF NATURAL RESOURCES
DO NOT REMOVE

**SOUTH PASS AREA
PLAQUEMINES PARISH**

3000 0 3000 Feet

TRACT 32842 - PORTION OF BLOCK 41, SOUTH PASS AREA, Plaquemines Parish, Louisiana

That portion of Block 41, South Pass Area, Plaquemines Parish, Louisiana, belonging to the State of Louisiana and not under mineral lease on November 8, 2000, described as follows: Beginning at the Southeast corner of Block 41, South Pass Area, having Coordinates of X = 2,615,928.00 and Y = 82,150.00; thence West 1,500.01 feet on the South line of said Block 41 to the Southeast corner of State Lease No. 12766, as amended, having Coordinates of X = 2,614,427.99 and Y = 82,150.00; thence North 14 degrees 10 minutes 04 seconds East 3,712.94 feet to its Northeast corner, also being the Southeast corner of State Lease No. 12729, as amended, having Coordinates of X = 2,615,336.78 and Y = 85,750.00; thence on the East boundary of said State Lease No. 12729 the following courses: North 14 degrees 10 minutes 04 seconds East 591.19 feet and North 29 degrees 44 minutes 42 seconds East 899.99 feet to a point on the East line of said Block 41 having Coordinates of X = 2,615,928.00 and Y = 87,104.61; thence South 4,954.61 feet on the East line of said Block 41 to the point of beginning, containing approximately **97.25 acres**, as shown outlined in red on a plat on file in the Office of Mineral Resources, Department of Natural Resources. All bearings, distances and coordinates are based on Louisiana Coordinate System of 1927 (South Zone).

NOTE: It appears, according to our records, that a portion of this tract is located within the restrictive safety fairway area as set out by the Corps of Engineers, U.S. Army.

NOTE: The State of Louisiana does hereby reserve, and this lease shall be subject to, the imprescriptible right of surface use in the nature of a servitude in favor of the Department of Natural Resources, including its Offices and Commissions, for the sole purpose of implementing, constructing, servicing and maintaining approved coastal zone management and/or restoration projects. Utilization of any and all rights derived under this lease by the mineral lessee, its agents, successors or assigns, shall not interfere with nor hinder the reasonable surface use by the Department of Natural Resources, its Offices or Commissions, as hereinabove reserved.

Applicant: Acadian Land Services, Inc.

Bidder	Cash Payment	Price / Acre	Rental	Oil	Gas	Other

TRACT 32843 - PORTION OF BLOCK 58, SOUTH PASS AREA, Plaquemines Parish, Louisiana

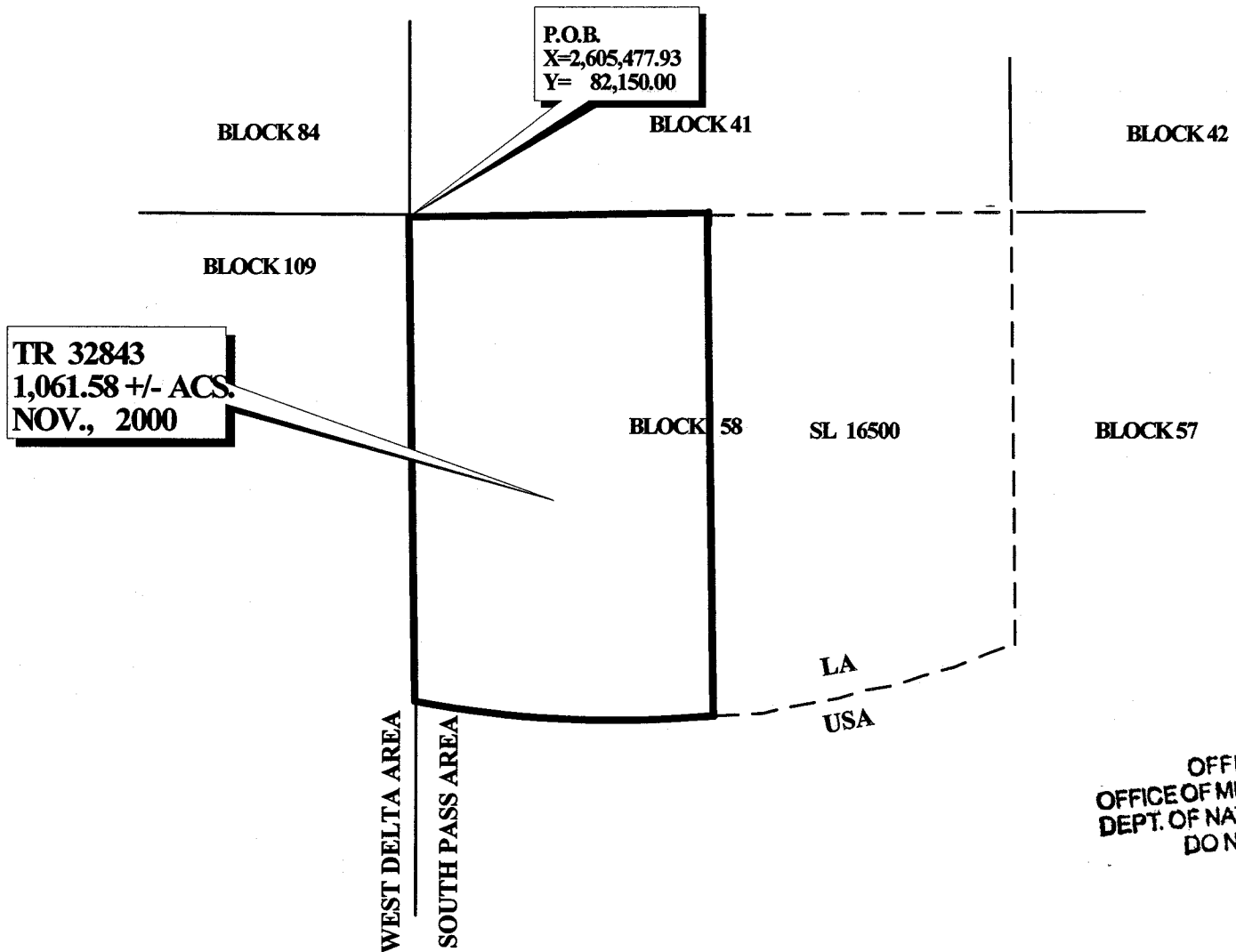
That portion of Block 58, South Pass Area, Plaquemines Parish, Louisiana, belonging to the State of Louisiana and not under mineral lease on November 8, 2000, described as follows: Beginning at the Northwest corner of Block 58, South Pass Area, having Coordinates of X = 2,605,477.93 and Y = 82,150.00; thence East 5,225.04 feet on the North line of said Block 58 to the Northwest corner of State Lease No. 16500 having Coordinates of X = 2,610,702.97 and Y = 82,150.00; thence South 8,881.91 feet on the West line of said State Lease No. 16500 to its Southwest corner having Coordinates of X = 2,610,702.97 and Y = 73,268.09; thence Southwesterly on an arc having a radius of 18,240.60 feet and a center at X = 2,609,180 and Y = 91,445 to a point on the West line of said Block 58 having Coordinates of X = 2,605,477.93 and Y = 73,584.03; thence North 8,565.97 feet on the West line of said Block 58 to the point of beginning, containing approximately **1,061.58 acres**, as shown outlined in red on a plat on file in the Office of Mineral Resources, Department of Natural Resources, **LESS AND EXCEPT** that portion thereof, if any, which is more than three nautical miles from the coast line as determined by the Report of the Special Master in the litigation in the Supreme Court of the United States styled United States v. State of Louisiana et al No. 9 Original, said three mile line as set out in the June, 1975, decree of the Supreme Court. All bearings, distances and coordinates are based on Louisiana Coordinate System of 1927 (South Zone).

NOTE: It appears, according to our records, that a portion of this tract is located within the restrictive safety fairway area as set out by the Corps of Engineers, U.S. Army.

NOTE: The State of Louisiana does hereby reserve, and this lease shall be subject to, the imprescriptible right of surface use in the nature of a servitude in favor of the Department of Natural Resources, including its Offices and Commissions, for the sole purpose of implementing, constructing, servicing and maintaining approved coastal zone management and/or restoration projects. Utilization of any and all rights derived under this lease by the mineral lessee, its agents, successors or assigns, shall not interfere with nor hinder the reasonable surface use by the Department of Natural Resources, its Offices or Commissions, as hereinabove reserved.

Applicant: Acadian Land Services, Inc.

Bidder	Cash Payment	Price / Acre	Rental	Oil	Gas	Other



OFFICIAL COPY
OFFICE OF MINERAL RESOURCES
DEPT. OF NATURAL RESOURCES
DO NOT REMOVE

3000 0 3000 Feet

PLAQUEMINES PARISH

TRACT 32844 - PORTION OF BLOCK 42, SOUTH PASS AREA, Plaquemines Parish, Louisiana

That portion of Block 42, South Pass Area, Plaquemines Parish, Louisiana, belonging to the State of Louisiana and not under mineral lease on November 8, 2000, described as follows: Beginning at the Northwest corner of Block 42, South Pass Area, having Coordinates of X = 2,615,928.00 and Y = 96,908.00; thence East 14,758.00 feet on the North line of said Block 42 to its Northeast corner having Coordinates of X = 2,630,686.00 and Y = 96,908.00; thence South 7,379.00 feet on the East line of said Block 42 to a point having Coordinates of X = 2,630,686.00 and Y = 89,529.00; thence West 14,014.62 feet to a point on the East boundary of State Lease No. 12967, as amended, having Coordinates of X = 2,616,671.38 and Y = 89,529.00; thence North 38 degrees 51 minutes 34 seconds East 3,596.72 feet on the East boundary of said State Lease No. 12967 to its Northernmost Southeast corner, also being the Southernmost point of State Lease No. 13261, as amended, having Coordinates of X = 2,618,928.00 and Y = 92,329.72; thence on the boundary of said State Lease No. 13261 the following courses: North 38 degrees 51 minutes 34 seconds East 2,537.23 feet and North 75 degrees 56 minutes 44 seconds West 1,641.01 feet to its Northwest corner, also being the Northeast corner of said State Lease No. 12967 having Coordinates of X = 2,618,928.00 and Y = 94,703.94; thence on the Northern boundary of said State Lease No. 12967 the following courses: North 75 degrees 56 minutes 44 seconds West 2,061.71 feet and South 54 degrees 24 minutes 20 seconds West 1,229.79 feet to its Northwest corner on the West line of said Block 42 having Coordinates of X = 2,615,928.00 and Y = 94,488.82; thence North 2,419.18 feet on the West line of said Block 42 to the point of beginning, containing approximately **2,157.97 acres**, as shown outlined in red on a plat on file in the Office of Mineral Resources, Department of Natural Resources. All bearings, distances and coordinates are based on Louisiana Coordinate System of 1927 (South Zone).

NOTE: It appears, according to our records, that a portion of this tract is located within the restrictive anchorage area as set out by the U. S. Coast Guard.

NOTE: The State of Louisiana does hereby reserve, and this lease shall be subject to, the imprescriptible right of surface use in the nature of a servitude in favor of the Department of Natural Resources, including its Offices and Commissions, for the sole purpose of implementing, constructing, servicing and maintaining approved coastal zone management and/or restoration projects. Utilization of any and all rights derived under this lease by the mineral lessee, its agents, successors or assigns, shall not interfere with nor hinder the reasonable surface use by the Department of Natural Resources, its Offices or Commissions, as hereinabove reserved.

Applicant: Acadian Land Services, Inc.

Bidder	Cash Payment	Price / Acre	Rental	Oil	Gas	Other



P.O.B
X=2,615,928.00
Y= 96,908.00

BLOCK 40

BLOCK 39

BLOCK 41

BLOCK 43

SL 12967

SL 13261

BLOCK 42

TR 32844
2,157.97 +/- ACS.
NOV., 2000

OFFICIAL COPY
OFFICE OF MINERAL RESOURCES
DEPT. OF NATURAL RESOURCES
DO NOT REMOVE

SOUTH PASS AREA
PLAQUEMINES PARISH

3000 0 3000 Feet

TRACT 32845 - PORTION OF BLOCK 42, SOUTH PASS AREA, Plaquemines Parish, Louisiana

That portion of Block 42, South Pass Area, Plaquemines Parish, Louisiana, belonging to the State of Louisiana and not under mineral lease on November 8, 2000, described as follows: Beginning at the Southwest corner of Block 42, South Pass Area, having Coordinates of X = 2,615,928.00 and Y = 82,150.00; thence North 4,954.61 feet on the West line of said Block 42 to the Southernmost point of State Lease No. 12967, as amended, having Coordinates of X = 2,615,928.00 and Y = 87,104.61; thence on the boundary of said State Lease No. 12967 the following courses: North 29 degrees 44 minutes 42 seconds East 403.12 feet, North 1,400.00 feet and North 38 degrees 51 minutes 34 seconds East 866.05 feet to a point on its East boundary having Coordinates of X = 2,616,671.38 and Y = 89,529.00; thence East 14,014.62 feet to a point on the East line of said Block 42 having Coordinates of X = 2,630,686.00 and Y = 89,529.00; thence South 1,093.38 feet on the East line of said Block 42 to a point having Coordinates of X = 2,630,686.00 and Y = 88,435.62; thence Southwesterly on a straight line to a point having Coordinates of X = 2,630,156 and Y = 87,770; thence Southwesterly on an arc having a radius of 18,240.60 feet and a center at X = 2,615,885 and Y = 99,131 to a point having Coordinates of X = 2,630,068 and Y = 87,661; thence Southwesterly on a straight line to a point having Coordinates of X = 2,629,389 and Y = 86,821; thence Southwesterly on a straight line to a point having Coordinates of X = 2,626,027 and Y = 82,661; thence Southwesterly on a straight line to a point on the South line of said Block 42 having Coordinates of X = 2,625,613.54 and Y = 82,150.00; thence West 9,685.54 feet to the point of beginning, containing approximately **2,120.02 acres**, as shown outlined in red on a plat on file in the Office of Mineral Resources, Department of Natural Resources, **LESS AND EXCEPT** that portion thereof, if any, which is more than three nautical miles from the coast line as determined by the Report of the Special Master in the litigation in the Supreme Court of the United States styled United States v. State of Louisiana et al No. 9 Original, said three mile line as set out in the June, 1975, decree of the Supreme Court. All bearings, distances and coordinates are based on Louisiana Coordinate System of 1927 (South Zone).

NOTE: It appears, according to our records, that a portion of this tract is located within the restrictive anchorage area as set out by the U. S. Coast Guard.

NOTE: The State of Louisiana does hereby reserve, and this lease shall be subject to, the imprescriptible right of surface use in the nature of a servitude in favor of the Department of Natural Resources, including its Offices and Commissions, for the sole purpose of implementing, constructing, servicing and maintaining approved coastal zone management and/or restoration projects. Utilization of any and all rights derived under this lease by the mineral lessee, its agents, successors or assigns, shall not interfere with nor hinder the reasonable surface use by the Department of Natural Resources, its Offices or Commissions, as hereinabove reserved.

Applicant: Acadian Land Services, Inc.

Bidder	Cash Payment	Price / Acre	Rental	Oil	Gas	Other