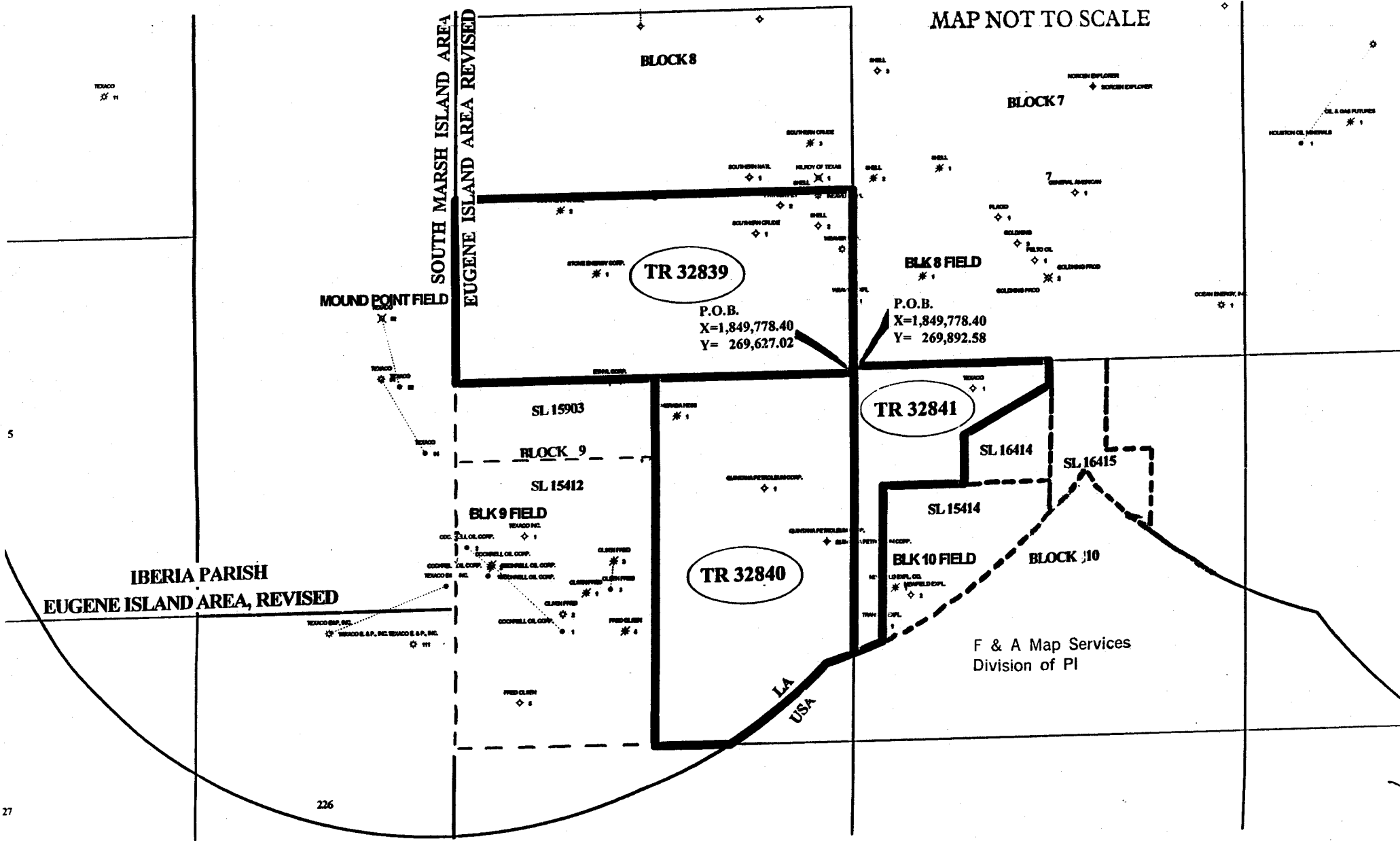


**OFFSHORE**

**TRACTS**

NOT TO BE USED WITH A PORTION BID  
FOR INFORMATIONAL PURPOSES ONLY !

MAP NOT TO SCALE



**TRACT 32839 - PORTION OF BLOCK 8, EUGENE ISLAND AREA, REVISED, Iberia Parish, Louisiana**

That portion of Block 8, Eugene Island Area, Revised, Iberia Parish, Louisiana, belonging to the State of Louisiana and not under mineral lease on November 8, 2000, described as follows: Beginning at the Southeast corner of Block 8, Eugene Island Area, Revised, having Coordinates of X = 1,849,778.40 and Y = 269,627.02; thence West 15,270.25 feet on the South line of said Block 8 to its Southwest corner having Coordinates of X = 1,834,508.15 and Y = 269,627.02; thence North 00 degrees 15 minutes 35 seconds East 7,139.16 feet on the West line of said Block 8 to a point having Coordinates of X = 1,834,540.51 and Y = 276,766.11; thence East 15,237.89 feet to a point on the East line of said Block 8 having Coordinates of X = 1,849,778.40 and Y = 276,766.11; thence South 7,139.09 feet on the East line of said Block 8 to the point of beginning, containing approximately **2,500.00 acres**, as shown outlined in red on a plat on file in the Office of Mineral Resources, Department of Natural Resources. All bearings, distances and coordinates are based on Louisiana Coordinate System of 1927 (South Zone).

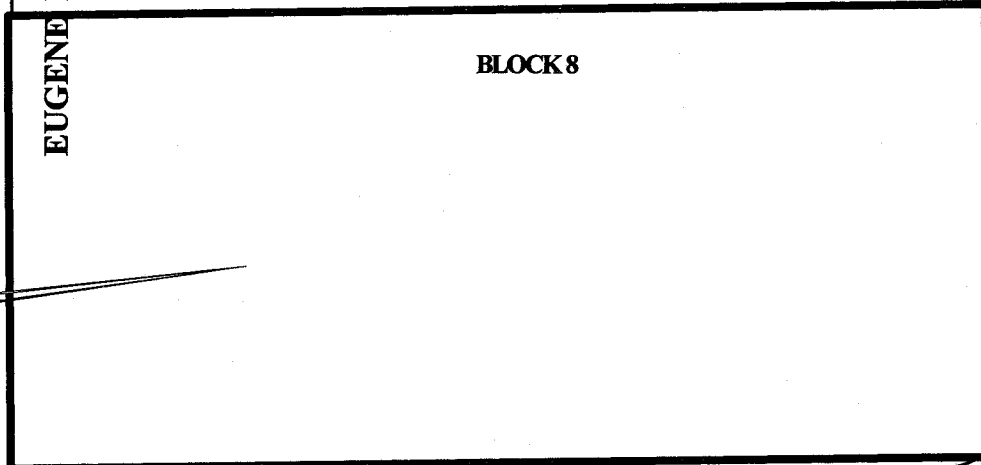
NOTE: The above described tract is in the vicinity of existing shell reefs where drilling and dredging operations must be conducted in strict conformity with the regulations adopted by the Louisiana Department of Wildlife and Fisheries and/or the U.S. Corps of Engineers, U.S. Army.

NOTE: The State of Louisiana does hereby reserve, and this lease shall be subject to, the imprescriptible right of surface use in the nature of a servitude in favor of the Department of Natural Resources, including its Offices and Commissions, for the sole purpose of implementing, constructing, servicing and maintaining approved coastal zone management and/or restoration projects. Utilization of any and all rights derived under this lease by the mineral lessee, its agents, successors or assigns, shall not interfere with nor hinder the reasonable surface use by the Department of Natural Resources, its Offices or Commissions, as hereinabove reserved.

Applicant: J.B. Muntz

Bidder	Cash Payment	Price / Acre	Rental	Oil	Gas	Other

SOUTH MARSH ISLAND AREA  
EUGENE ISLAND AREA, REVISED

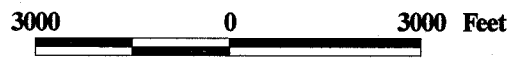


TR 32839  
2,500.00 +/- ACS.  
NOV., 2000

P.O.B.  
X=1,849,778.40  
Y= 269,627.02

IBERIA PARISH

OFFICIAL COPY  
OFFICE OF MINERAL RESOURCES  
DEPT. OF NATURAL RESOURCES  
DO NOT REMOVE



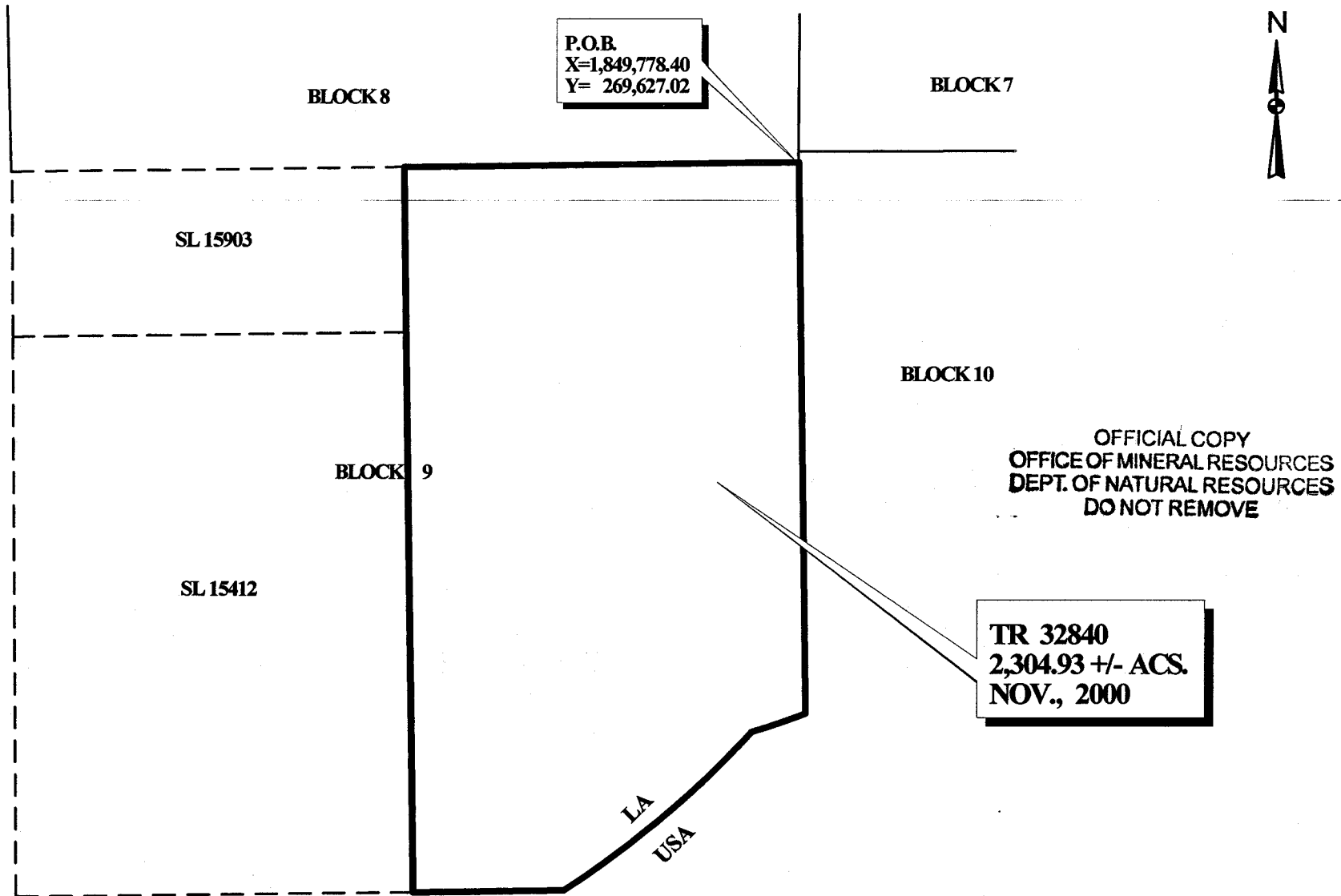
**TRACT 32840 - PORTION OF BLOCK 9, EUGENE ISLAND AREA, REVISED, Iberia Parish, Louisiana**

That portion of Block 9, Eugene Island Area, Revised, Iberia Parish, Louisiana, belonging to the State of Louisiana and not under mineral lease on November 8, 2000, described as follows: Beginning at the Northeast corner of Block 9, Eugene Island Area, Revised, having Coordinates of X = 1,849,778.40 and Y = 269,627.02; thence South 10,828.92 feet on the East line of said Block 9 to a point having Coordinates of X = 1,849,778.40 and Y = 258,798.10; thence Southwesterly on an arc having a radius of 18,240.60 feet and a center at X = 1,843,467 and Y = 275,912 to a point having Coordinates of X = 1,848,729 and Y = 258,447; thence Southwesterly on an arc having a radius of 18,240.60 feet and a center at X = 1,835,344 and Y = 270,839 to a point on the South line of said Block 9 having Coordinates of X = 1,845,048.17 and Y = 255,393.98; thence West 2,921.07 feet on the South line of said Block 9 to the Southeast corner of State Lease No. 15412 having Coordinates of X = 1,842,127.10 and Y = 255,393.98; thence North 10,994.67 feet on the East line of said State Lease No. 15412 to its Northeast corner, also being the Southeast corner of State Lease No. 15903 having Coordinates of X = 1,842,127.10 and Y = 266,388.65; thence North 3,238.37 feet on the East line of said State Lease 15903 to its Northeast corner located on the North line of said Block 9 having Coordinates of X = 1,842,127.10 and Y = 269,627.02; thence East 7,651.30 feet along the North line of said Block 9 to the point of beginning, containing approximately **2,304.93 acres**, as shown outlined in red on a plat on file in the Office of Mineral Resources, Department of Natural Resources, **LESS AND EXCEPT** that portion thereof, if any, which is more than three nautical miles from the coast line as determined by the Report of the Special Master in the litigation in the Supreme Court of the United States styled United States v. State of Louisiana et al No. 9 Original, said three mile line as set out in the June, 1975, decree of the Supreme Court. All bearings, distances and coordinates are based on Louisiana Coordinate System of 1927 (South Zone).

NOTE: The State of Louisiana does hereby reserve, and this lease shall be subject to, the imprescriptible right of surface use in the nature of a servitude in favor of the Department of Natural Resources, including its Offices and Commissions, for the sole purpose of implementing, constructing, servicing and maintaining approved coastal zone management and/or restoration projects. Utilization of any and all rights derived under this lease by the mineral lessee, its agents, successors or assigns, shall not interfere with nor hinder the reasonable surface use by the Department of Natural Resources, its Offices or Commissions, as hereinabove reserved.

Applicant: J.B. Muntz

Bidder	Cash Payment	Price / Acre	Rental	Oil	Gas	Other



**EUGENE ISLAND AREA, REVISED  
IBERIA PARISH**

**TRACT 32841 - PORTION OF BLOCK 10, EUGENE ISLAND AREA, REVISED, Iberia Parish, Louisiana**

That portion of Block 10, Eugene Island Area, Revised, Iberia Parish, Louisiana, belonging to the State of Louisiana and not under mineral lease on November 8, 2000, described as follows: Beginning at the Northwest corner of Block 10, Eugene Island Area, Revised, having Coordinates of X = 1,849,778.40 and Y = 269,892.58; thence East 7,511.08 feet on the North line of said Block 10 to the Northwest corner of State Lease No. 16415 having Coordinates of X = 1,857,289.48 and Y = 269,892.58; thence South 941.89 feet on the West line of said State Lease No. 16415 to the Northeast corner of State Lease No. 16414 having Coordinates of X = 1,857,289.48 and Y = 268,950.69; thence along the said State Lease No. 16414 the following courses: South 60 degrees 15 minutes 34 seconds West 3,773.68 feet and South 1,869.22 feet to its Southwest corner, also being a point on the North line of State Lease No. 15414 having Coordinates of X = 1,854,012.87 and Y = 265,209.45; thence along the boundary of said State Lease No. 15414 the following courses: West 3,123.39 feet and South 5,959.62 feet to its Southwest corner having Coordinates of X = 1,850,889.48 and Y = 259,249.83; thence Southwesterly on an arc having a radius of 18,240.60 feet and a center at X = 1,843,467 and Y = 275,912 to a point on the West line of said Block 10 having Coordinates of X = 1,849,778.40 and Y = 258,798.10; thence North 11,094.48 feet along the West line of said Block 10 to the point of beginning, containing approximately **754.46 acres**, as shown outlined in red on a plat on file in the Office of Mineral Resources, Department of Natural Resources, **LESS AND EXCEPT** that portion thereof, if any, which is more than three nautical miles from the coast line as determined by the Report of the Special Master in the litigation in the Supreme Court of the United States styled United States v. State of Louisiana et al No. 9 Original, said three mile line as set out in the June, 1975, decree of the Supreme Court. All bearings, distances and coordinates are based on Louisiana Coordinate System of 1927 (South Zone).

NOTE: The State of Louisiana does hereby reserve, and this lease shall be subject to, the imprescriptible right of surface use in the nature of a servitude in favor of the Department of Natural Resources, including its Offices and Commissions, for the sole purpose of implementing, constructing, servicing and maintaining approved coastal zone management and/or restoration projects. Utilization of any and all rights derived under this lease by the mineral lessee, its agents, successors or assigns, shall not interfere with nor hinder the reasonable surface use by the Department of Natural Resources, its Offices or Commissions, as hereinabove reserved.

Applicant: J.B. Muntz



Bidder	Cash Payment	Price / Acre	Rental	Oil	Gas	Other