

TRACT 32880 - Lafourche Parish, Louisiana

All of the lands now or formerly constituting the beds and bottoms of all water bodies of every nature and description and all islands and other lands formed by accretion or reliction, except tax lands, owned by and not under mineral lease from the State of Louisiana on November 8, 2000, situated in Lafourche Parish, Louisiana, within the following described boundaries: Beginning at a point having Coordinates of X = 2,278,938.02 and Y = 287,559.19; thence North 88 degrees 34 minutes 40 seconds East 12,006.13 feet to a point having Coordinates of X = 2,290,940.45 and Y = 287,857.16; thence South 01 degrees 27 minutes 50 seconds East 8,096.34 feet to a point having Coordinates of X = 2,291,147.28 and Y = 279,763.46; thence South 88 degrees 34 minutes 43 seconds West 11,971.34 feet to a point having Coordinates of X = 2,279,179.63 and Y = 279,466.52; thence North 01 degrees 42 minutes 36 seconds West 8,096.27 feet to the point of beginning, containing approximately **98 acres**, as shown outlined in red on a plat on file in the Office of Mineral Resources, Department of Natural Resources. All bearings, distances and coordinates are based on Louisiana Coordinate System of 1927 (South Zone).

NOTE: This tract is located within the Point Au Chien Wildlife Management Area. Any operations on said tract shall be coordinated with the Louisiana Department of Wildlife and Fisheries. Special Rules and Regulations have been promulgated by the Louisiana Department of Wildlife and Fisheries for the protection of the game and wildlife for some management areas. Any lease awarded by the Board on said tract shall be subject to any applicable Rules and Regulations of said management area. Copies of these Rules and Regulations may be obtained from the Louisiana Department of Wildlife and Fisheries through the Assistant Secretary, Office of Wildlife, upon request.

NOTE: The State of Louisiana does hereby reserve, and this lease shall be subject to, the imprescriptible right of surface use in the nature of a servitude in favor of the Department of Natural Resources, including its Offices and Commissions, for the sole purpose of implementing, constructing, servicing and maintaining approved coastal zone management and/or restoration projects. Utilization of any and all rights derived under this lease by the mineral lessee, its agents, successors or assigns, shall not interfere with nor hinder the reasonable surface use by the Department of Natural Resources, its Offices or Commissions, as hereinabove reserved.

Applicant: King Energy Resources, Inc.

Bidder	Cash Payment	Price / Acre	Rental	Oil	Gas	Other

P.O.B.
X=2,278,938.02
Y= 287,559.19

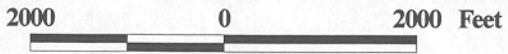
TR 32880
98 +/- ACS.
NOV., 2000



TERREBONNE PARISH

LAFORCHE PARISH

OFFICIAL COPY
OFFICE OF MINERAL RESOURCES
DEPT. OF NATURAL RESOURCES
DO NOT REMOVE



TRACT 32881 - Lafourche and Terrebonne Parishes, Louisiana

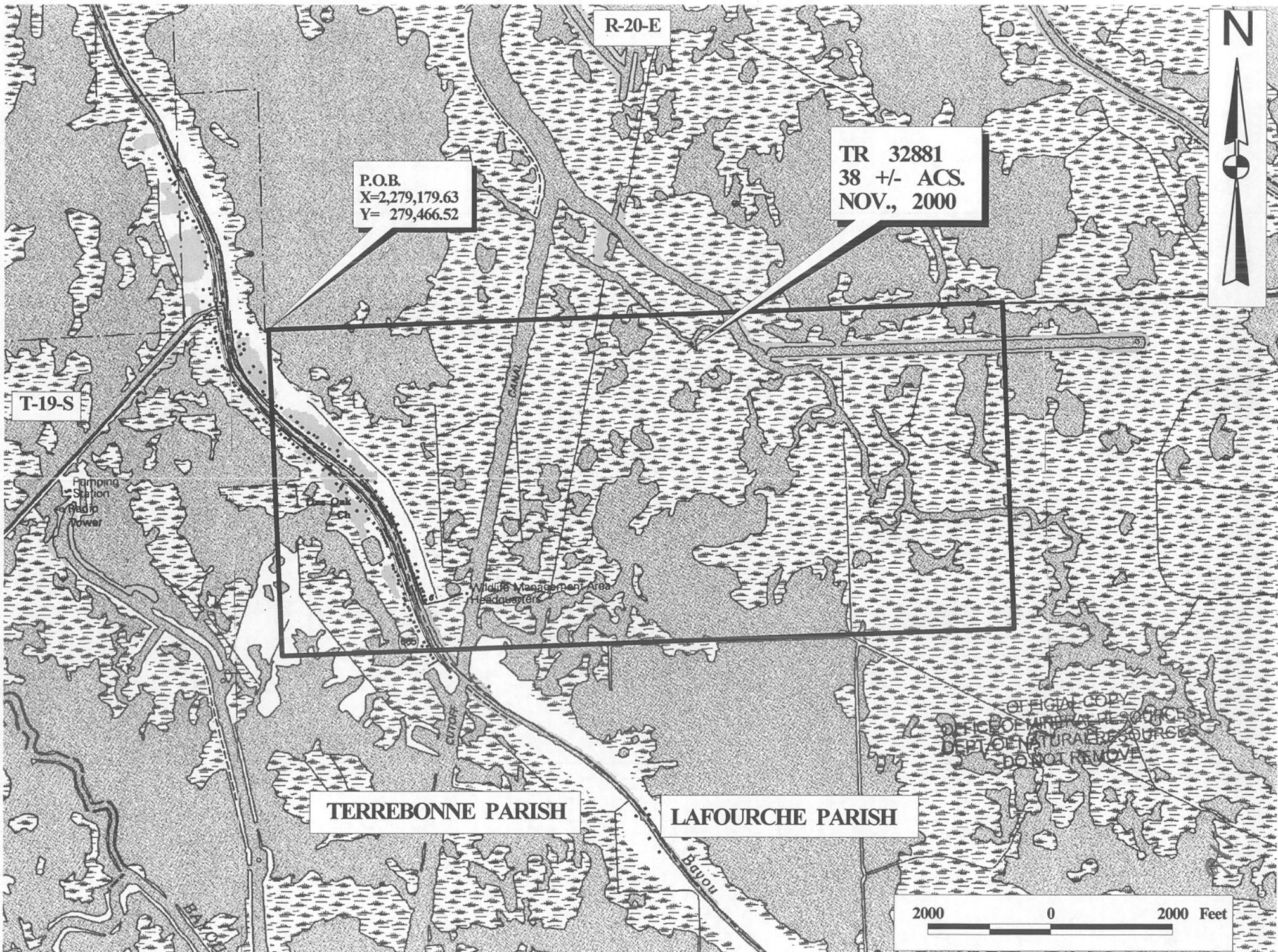
All of the lands now or formerly constituting the beds and bottoms of all water bodies of every nature and description and all islands and other lands formed by accretion or reliction, except tax lands, owned by and not under mineral lease from the State of Louisiana on November 8, 2000, situated in Lafourche and Terrebonne Parishes, Louisiana, within the following described boundaries: Beginning at a point having Coordinates of X = 2,279,179.63 and Y = 279,466.52; thence North 88 degrees 34 minutes 45 seconds East 11,971.34 feet to a point having Coordinates of X = 2,291,147.28 and Y = 279,763.46; thence South 01 degrees 27 minutes 50 seconds East 5,397.49 feet to a point having Coordinates of X = 2,291,285.16 and Y = 274,367.73; thence South 88 degrees 34 minutes 59 seconds West 11,948.14 feet to a point having Coordinates of X = 2,279,340.67 and Y = 274,072.30; thence North 01 degrees 42 minutes 36 seconds West 5,396.63 feet to the point of beginning, containing approximately **38 acres**, as shown outlined in red on a plat on file in the Office of Mineral Resources, Department of Natural Resources. All bearings, distances and coordinates are based on Louisiana Coordinate System of 1927 (South Zone).

NOTE: This tract is located within the Point Au Chien Wildlife Management Area. Any operations on said tract shall be coordinated with the Louisiana Department of Wildlife and Fisheries. Special Rules and Regulations have been promulgated by the Louisiana Department of Wildlife and Fisheries for the protection of the game and wildlife for some management areas. Any lease awarded by the Board on said tract shall be subject to any applicable Rules and Regulations of said management area. Copies of these Rules and Regulations may be obtained from the Louisiana Department of Wildlife and Fisheries through the Assistant Secretary, Office of Wildlife, upon request.

NOTE: The State of Louisiana does hereby reserve, and this lease shall be subject to, the imprescriptible right of surface use in the nature of a servitude in favor of the Department of Natural Resources, including its Offices and Commissions, for the sole purpose of implementing, constructing, servicing and maintaining approved coastal zone management and/or restoration projects. Utilization of any and all rights derived under this lease by the mineral lessee, its agents, successors or assigns, shall not interfere with nor hinder the reasonable surface use by the Department of Natural Resources, its Offices or Commissions, as hereinabove reserved.

Applicant: King Energy Resources, Inc.

Bidder	Cash Payment	Price / Acre	Rental	Oil	Gas	Other



R-20-E

P.O.B.
X=2,279,179.63
Y= 279,466.52

TR 32881
38 +/- ACS.
NOV., 2000

T-19-S

Pumping
Station
Headworks
Tower

Wildlife Management Area
Headquarters

TERREBONNE PARISH

LAFOURCHE PARISH

OFFICIAL COPY
DEPT. OF NATURAL RESOURCES
DEPT. OF NATURAL RESOURCES
DO NOT REMOVE

2000 0 2000 Feet