

MAP NOT TO SCALE

NOT TO BE USED WITH A PORTION BID
FOR INFORMATIONAL PURPOSES ONLY!

F & A Map Services
Division of PI

Chesapeake Easting
1-1
1-2

RAPIDES
EVANGELINE

TR 32876

P.O.B.
X=1,692,600.00
Y= 842,200.00

PARISH
PARISH

TR 32877

T-I-S R-I-E

RAPIDES PH. T-I-S R-2-E

RAPIDES PH.
AVOYELLES PH.

AVOYELLES
EVANGELINE
PARISH

CHENEYVILLE FIELD

CHENEYVILLE FIELD

Goldsbury
HARRIS Co
AC18

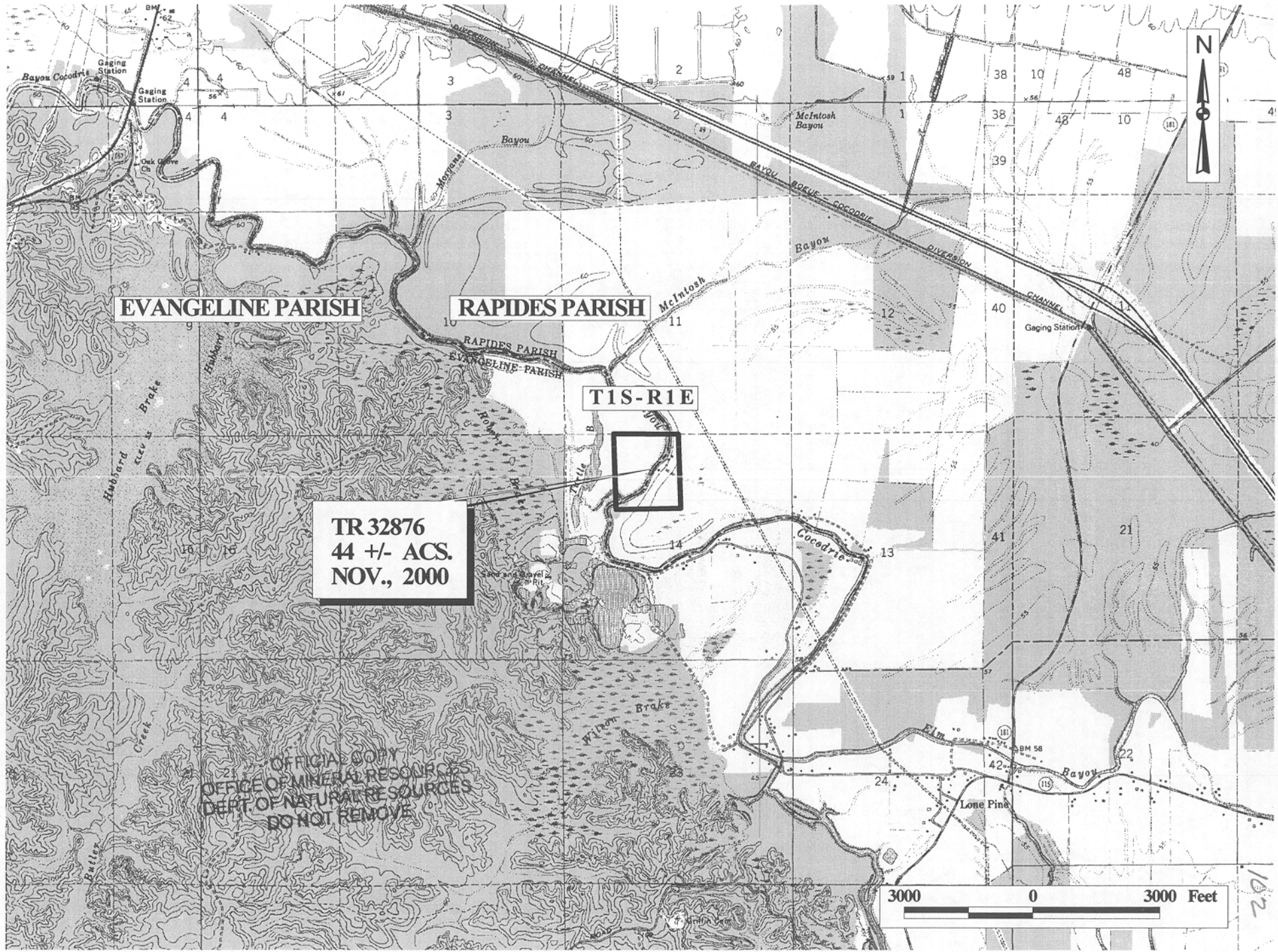
Richardson
AC18
AC19
AC20
AC21
AC22
AC23
AC24
AC25
AC26
AC27
AC28
AC29
AC30
AC31
AC32
AC33
AC34
AC35
AC36
AC37
AC38
AC39
AC40
AC41
AC42
AC43
AC44
AC45
AC46
AC47
AC48
AC49
AC50
AC51
AC52
AC53
AC54
AC55
AC56
AC57
AC58
AC59
AC60
AC61
AC62
AC63
AC64
AC65
AC66
AC67
AC68
AC69
AC70
AC71
AC72
AC73
AC74
AC75
AC76
AC77
AC78
AC79
AC80
AC81
AC82
AC83
AC84
AC85
AC86
AC87
AC88
AC89
AC90
AC91
AC92
AC93
AC94
AC95
AC96
AC97
AC98
AC99
AC100

TRACT 32876 - Evangeline and Rapides Parishes, Louisiana

All of the right, title and interest of the State of Louisiana in the mineral rights in and to the following described property, which is not under mineral lease from the State of Louisiana on November 8, 2000, situated in Evangeline and Rapides Parishes, Louisiana, and being more fully described as follows: The North 50 acres of the East Half of the Northwest Quarter of Section 14, Township 1 South, Range 1 East, Rapides and Evangeline Parishes, Louisiana, containing approximately **44 acres**, as shown outlined in red on a plat on file in the Office of Mineral Resources, Department of Natural Resources.

Applicant: Oil and Gas Properties

Bidder	Cash Payment	Price / Acre	Rental	Oil	Gas	Other



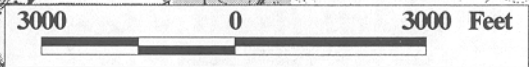
EVANGELINE PARISH

RAPIDES PARISH

T1S-R1E

TR 32876
44 +/- ACS.
NOV., 2000

OFFICIAL COPY
OFFICE OF MINERAL RESOURCES
DEPT. OF NATURAL RESOURCES
DO NOT REMOVE



102

TRACT 32877 - Evangeline and Rapides Parishes, Louisiana

All of the lands now or formerly constituting the beds and bottoms of all water bodies of every nature and description and all islands and other lands formed by accretion or reliction, except tax lands, owned by and not under mineral lease from the State of Louisiana on November 8, 2000, situated in Evangeline and Rapides Parishes, Louisiana, within the following described boundaries: Beginning at a point having Coordinates of X = 1,692,600.00 and Y = 842,200.00; thence South 8,100.00 feet to a point having Coordinates of X = 1,692,600.00 and Y = 834,100.00; thence West 10,700.00 feet to a point having Coordinates of X = 1,681,900.00 and Y = 834,100.00; thence North 8,100.00 feet to a point having Coordinates of X = 1,681,900.00 and Y = 842,200.00; thence East 10,700.00 feet to the point of beginning, containing approximately **35 acres**, as shown outlined in red on a plat on file in the Office of Mineral Resources, Department of Natural Resources. All bearings, distances and coordinates are based on Louisiana Coordinate System of 1927 (South Zone).

Applicant: Oil and Gas Properties

Bidder	Cash Payment	Price / Acre	Rental	Oil	Gas	Other

EVANGELINE PARISH

RAPIDES PARISH

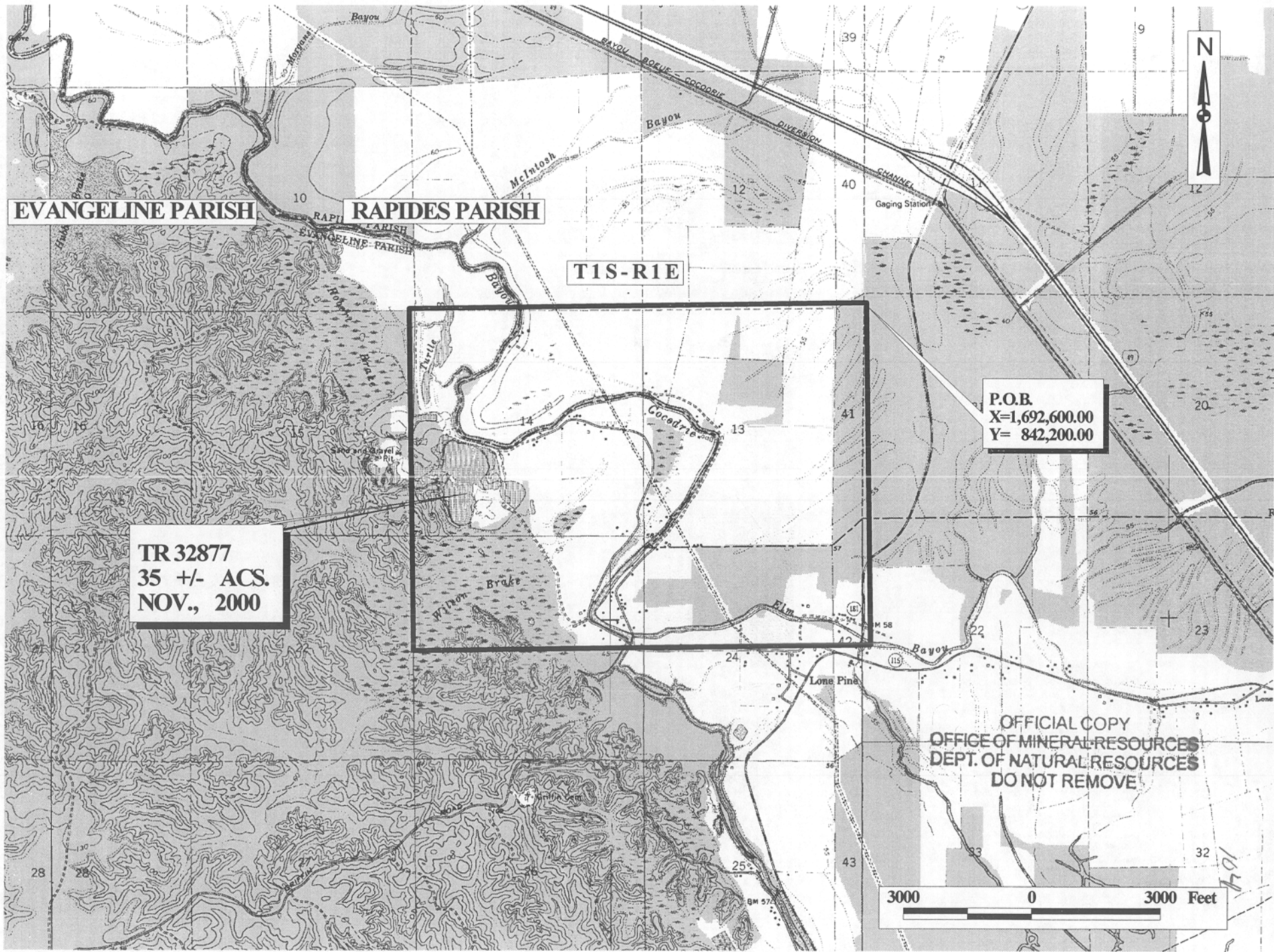
T1S-R1E

TR 32877
35 +/- ACS.
NOV., 2000

P.O.B.
X=1,692,600.00
Y= 842,200.00

OFFICIAL COPY
OFFICE OF MINERAL RESOURCES
DEPT. OF NATURAL RESOURCES
DO NOT REMOVE

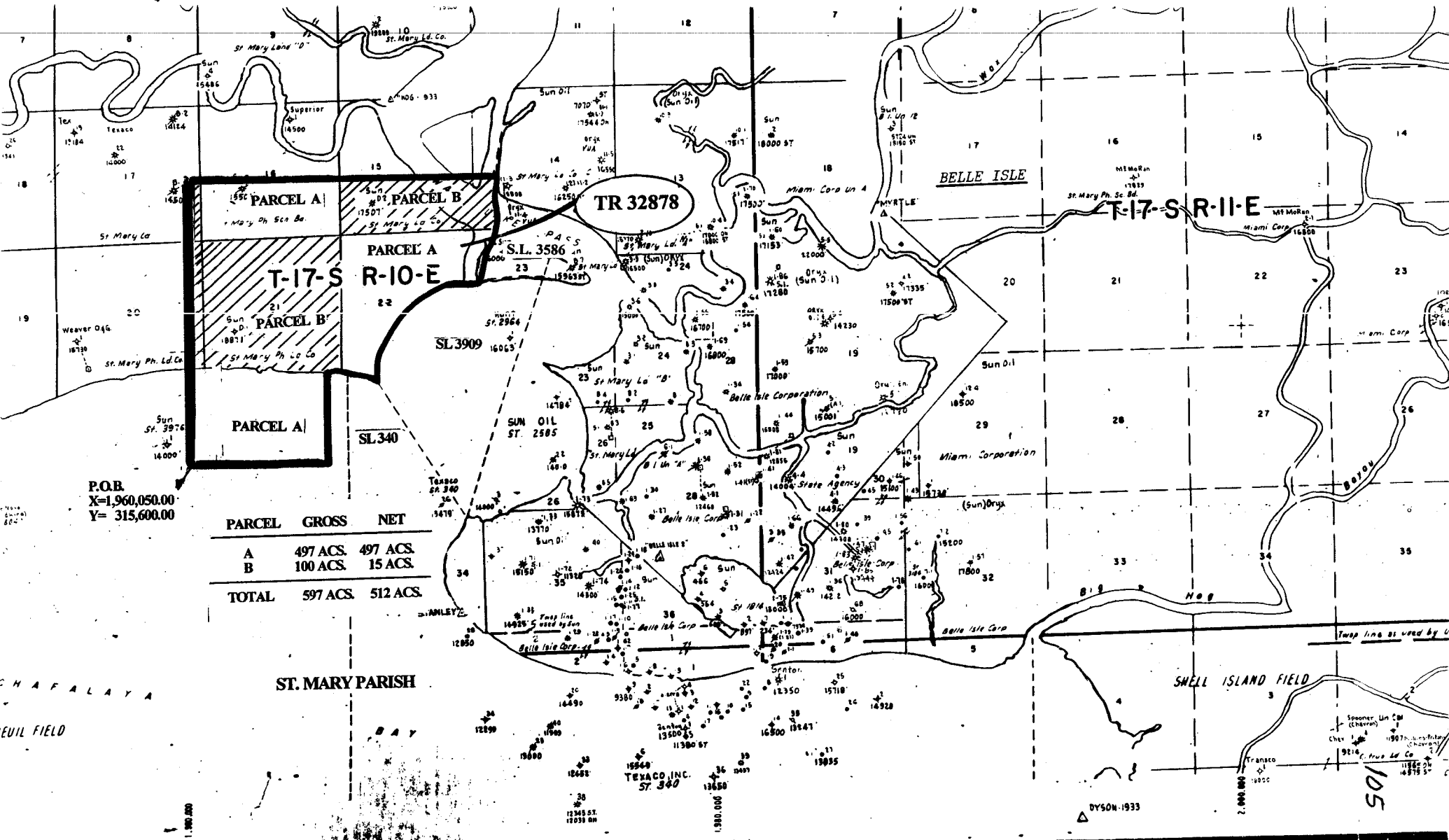
3000 0 3000 Feet



F & A Map Services
Division of PI

MAP NOT TO SCALE

**NOT TO BE USED WITH A PORTION BID
FOR INFORMATIONAL PURPOSES ONLY!**



P.O.B.
X=1,960,050.00
Y= 315,600.00

PARCEL	GROSS	NET
A	497 ACS.	497 ACS.
B	100 ACS.	15 ACS.
TOTAL	597 ACS.	512 ACS.

ST. MARY PARISH

105