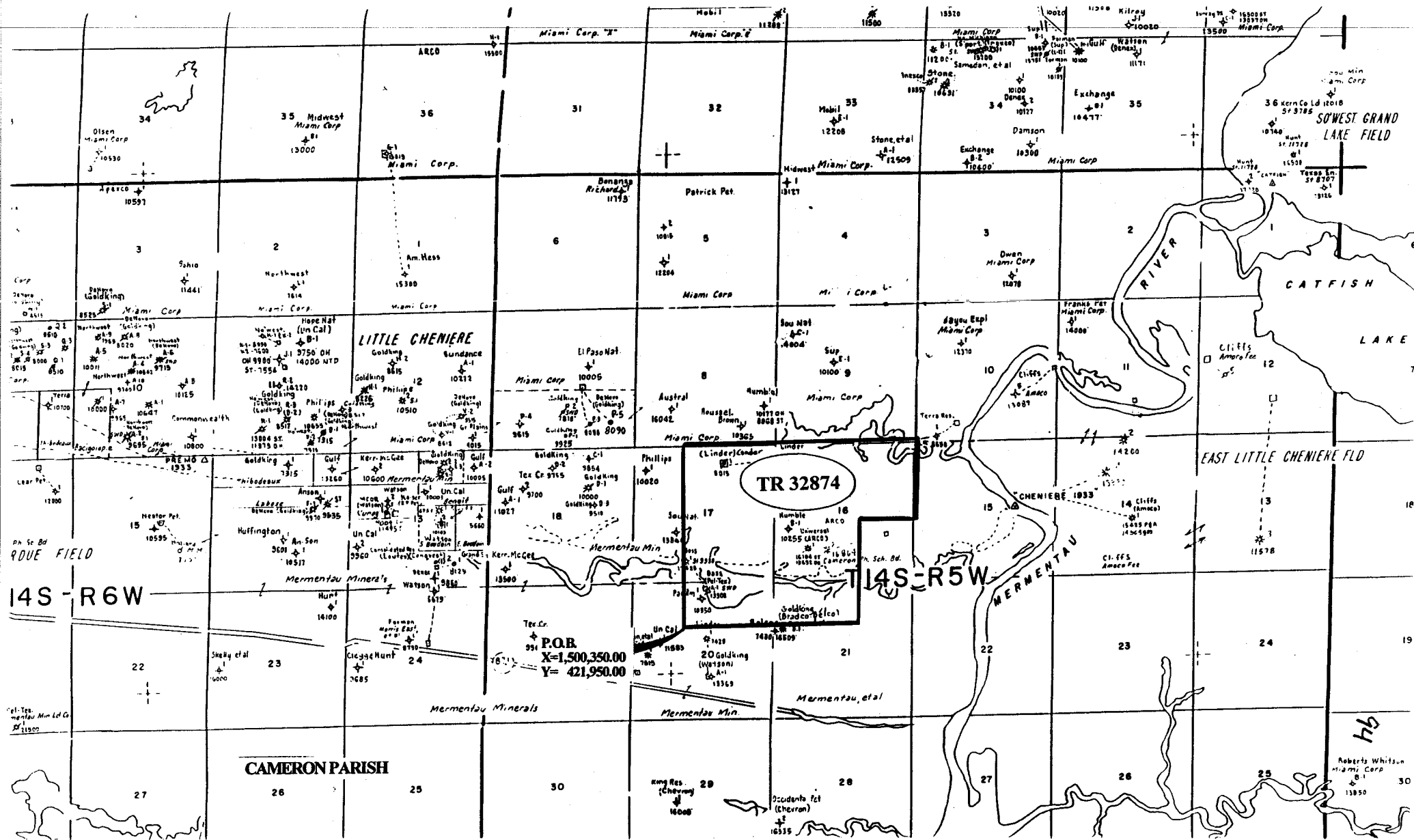


MAP NOT TO SCALE

F & A Map Services
Division of PI

NOT TO BE USED WITH A PORTION BID
FOR INFORMATIONAL PURPOSES ONLY!



TRACT 32874 - Cameron Parish, Louisiana

All of the lands now or formerly constituting the beds and bottoms of all water bodies of every nature and description and all islands and other lands formed by accretion or reliction, except tax lands, owned by and not under mineral lease from the State of Louisiana on November 8, 2000, situated in Cameron Parish, Louisiana, within the following described boundaries: Beginning at a point having Coordinates of X = 1,500,350.00 and Y = 421,950.00; thence North 7,000.00 feet to a point having Coordinates of X = 1,500,350.00 and Y = 428,950.00; thence East 9,000.00 feet to a point having Coordinates of X = 1,509,350.00 and Y = 428,950.00; thence South 2,992.38 feet to a point having Coordinates of X = 1,509,350.00 and Y = 425,957.62; thence West 2,254.13 feet to a point; thence South 4,007.62 feet to a point having Coordinates of X = 1,507,095.87 and Y = 421,950.00; thence West 6,745.87 feet to the point of beginning, containing approximately **51 acres**, as shown outlined in red on a plat on file in the Office of Mineral Resources, Department of Natural Resources. All bearings, distances and coordinates are based on Louisiana Coordinate System of 1927 (South Zone).

NOTE: The State of Louisiana does hereby reserve, and this lease shall be subject to, the imprescriptible right of surface use in the nature of a servitude in favor of the Department of Natural Resources, including its Offices and Commissions, for the sole purpose of implementing, constructing, servicing and maintaining approved coastal zone management and/or restoration projects. Utilization of any and all rights derived under this lease by the mineral lessee, its agents, successors or assigns, shall not interfere with nor hinder the reasonable surface use by the Department of Natural Resources, its Offices or Commissions, as hereinabove reserved.

Applicant: J.P. White

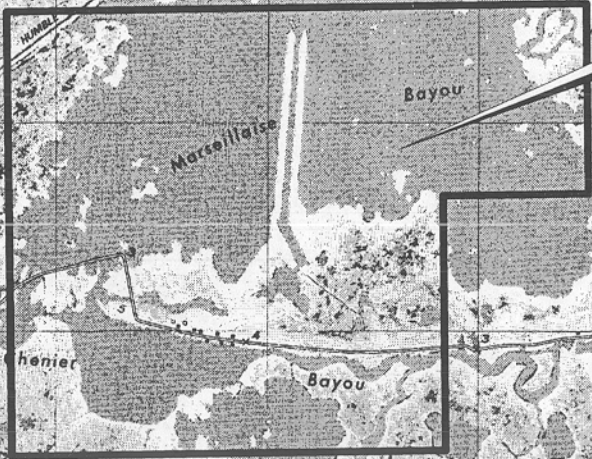
Bidder	Cash Payment	Price / Acre	Rental	Oil	Gas	Other

OFFICIAL COPY
OFFICE OF MINERAL RESOURCES
DEPT. OF NATURAL RESOURCES
DO NOT REMOVE



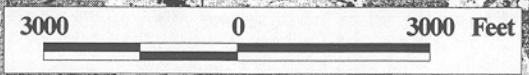
T14S-R5W

TR 32874
51 +/- ACS.
NOV., 2000



P.O.B.
X=1,500,350.00
Y= 421,950.00

CAMERON PARISH



76

F & A Map Services
Division of PI

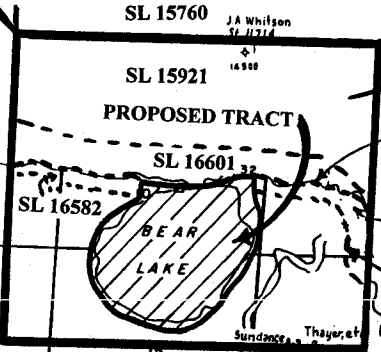
NOT TO BE USED WITH A PORTION BID
FOR INFORMATIONAL PURPOSES ONLY!

TR 32875

P.O.B.
X=1,606,762.35
Y= 386,907.15



AREA INCLUDED IN
THIS NOMINATION

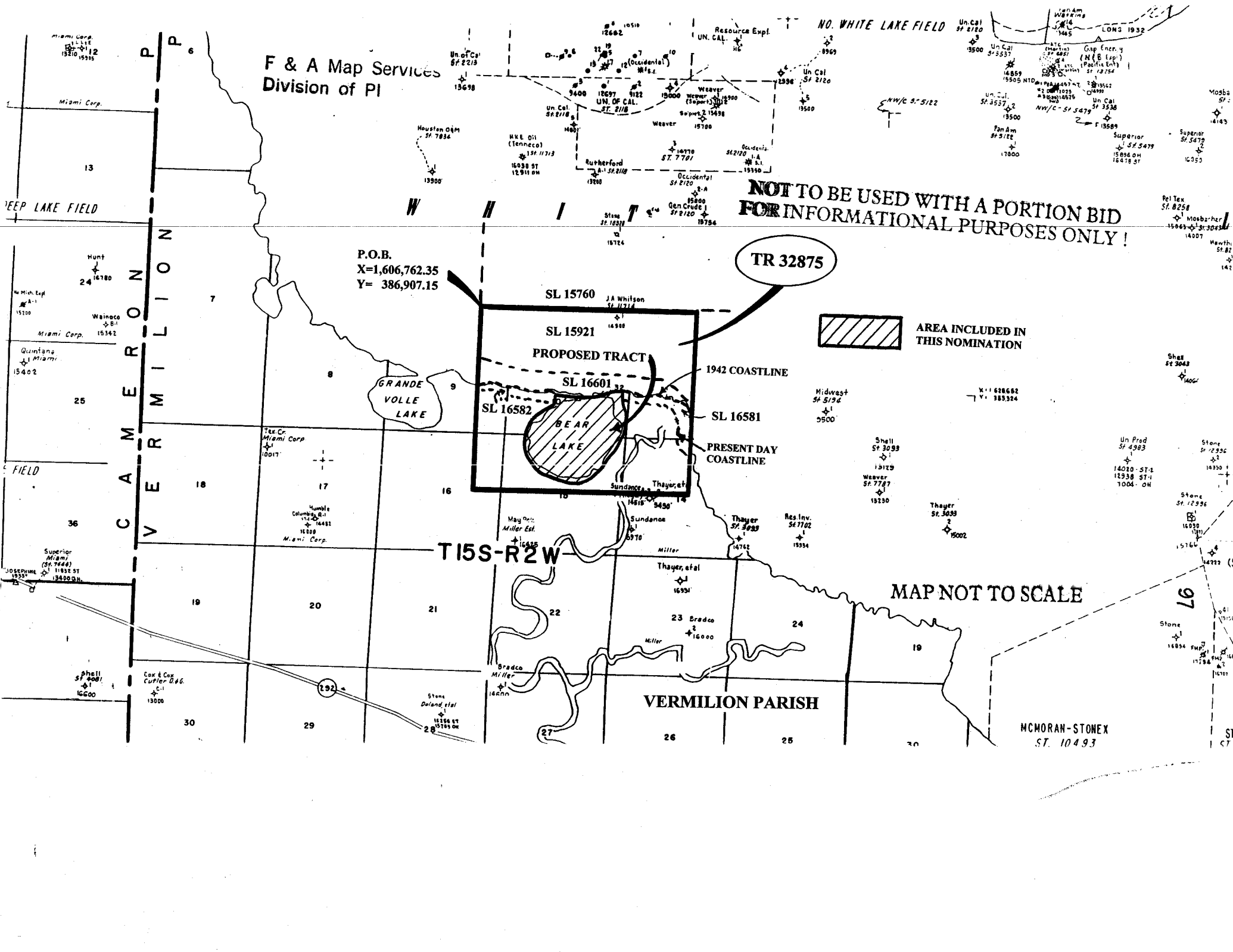


T15S-R2W

MAP NOT TO SCALE

VERMILION PARISH

MCMORAN-STONEX
ST. 10493



TRACT 32875 - Vermilion Parish, Louisiana

All of the lands now or formerly constituting the beds and bottoms of all water bodies of every nature and description and all islands and other lands formed by accretion or reliction, except tax lands, owned by and not under mineral lease from the State of Louisiana on November 8, 2000, situated in Vermilion Parish, Louisiana, within the following described boundaries: Beginning at the Southwest corner of State Lease No. 15760 having Coordinates of X = 1,606,762.35 and Y = 386,907.15; thence East 9,500.00 feet along the South boundary of said State Lease No. 15760 to a point having Coordinates of X = 1,616,262.35 and Y = 386,907.15; thence South 8,042.85 feet to a point having Coordinates of X = 1,616,262.35 and Y = 378,864.30; thence West 9,500.00 feet to a point having Coordinates of X = 1,606,762.35 and Y = 378,864.30; thence North 8,042.85 feet to the point of beginning, **LESS AND EXCEPT** State Lease No. 15921, State Lease No. 16601, State Lease No. 16581 and State Lease No. 16582 and also **LESS AND EXCEPT** that part of White Lake lying North and East of the 1942 coast line, containing approximately **309 acres**, as shown outlined in red on a plat on file in the Office of Mineral Resources, Department of Natural Resources. All bearings, distances and coordinates are based on Louisiana Coordinate System of 1927 (South Zone).

NOTE: Any bid on this tract shall contain, as additional consideration by the bidder, the obligation of the bidder, should a title dispute arise regarding this tract and litigation ensue, to pay to the State, as same may be billed, any and all legal costs incurred by the State of Louisiana in defending its title to the tract up to a maximum amount of one hundred fifty thousand and no/100 (\$150,000.00) dollars. Failure to so include the additional consideration set forth herein may, at the sole discretion of the State Mineral Board, render the bid unacceptable.

NOTE: The State of Louisiana does hereby reserve, and this lease shall be subject to, the imprescriptible right of surface use in the nature of a servitude in favor of the Department of Natural Resources, including its Offices and Commissions, for the sole purpose of implementing, constructing, servicing and maintaining approved coastal zone management and/or restoration projects. Utilization of any and all rights derived under this lease by the mineral lessee, its agents, successors or assigns, shall not interfere with nor hinder the reasonable surface use by the Department of Natural Resources, its Offices or Commissions, as hereinabove reserved.

Applicant: Angelle & Donohue Oil & Gas Properties, Inc.

Bidder	Cash Payment	Price / Acre	Rental	Oil	Gas	Other

WHITE LAKE

S.L. 15760

OFFICIAL COPY
OFFICE OF MINERAL RESOURCES
DEPT. OF NATURAL RESOURCES
DO NOT REMOVE



P.O.B.
X=1,606,762.35
Y= 386,907.15

S.L. 15921

TR 32875
309 +/- ACS.
NOV., 2000


1942 COASTLINE

S.L. 16601

S.L. 16582

Grande Volle
Lake

PRESENT DAY
COASTLINE

 AREA INCLUDED IN
THIS NOMINATION

Bay Lake

S.L. 16581

T15S-R2W

VERMILION PARISH

