

**TRACT 32868 - Cameron Parish, Louisiana**

All of the lands now or formerly constituting the beds and bottoms of all water bodies of every nature and description and all islands and other lands formed by accretion or reliction, except tax lands, owned by and not under mineral lease from the State of Louisiana on November 8, 2000, situated in Cameron Parish, Louisiana, within the following described boundaries: Beginning at a point having Coordinates of X = 1,474,798.03 and Y = 410,045.03; thence East 8,188.42 feet to a point having Coordinates of X = 1,482,986.45 and Y = 410,045.03; thence South 10,077.65 feet to a point having Coordinates of X = 1,482,986.45 and Y = 399,967.38; thence West 8,188.42 feet to a point having Coordinates of X = 1,474,798.03 and Y = 399,967.38; thence North 10,077.65 feet to the point of beginning, containing approximately **112 acres**, as shown outlined in red on a plat on file in the Office of Mineral Resources, Department of Natural Resources. All bearings, distances and coordinates are based on Louisiana Coordinate System of 1927 (South Zone).

NOTE: The State of Louisiana does hereby reserve, and this lease shall be subject to, the imprescriptible right of surface use in the nature of a servitude in favor of the Department of Natural Resources, including its Offices and Commissions, for the sole purpose of implementing, constructing, servicing and maintaining approved coastal zone management and/or restoration projects. Utilization of any and all rights derived under this lease by the mineral lessee, its agents, successors or assigns, shall not interfere with nor hinder the reasonable surface use by the Department of Natural Resources, its Offices or Commissions, as hereinabove reserved.

Applicant: Stephen M. Jenkins & Associates, Inc.

Bidder	Cash Payment	Price / Acre	Rental	Oil	Gas	Other

OFFICIAL COPY  
OFFICE OF MINERAL RESOURCES  
DEPT. OF NATURAL RESOURCES  
DO NOT REMOVE



P.O.B.  
X=1,474,798.03  
Y= 410,045.03

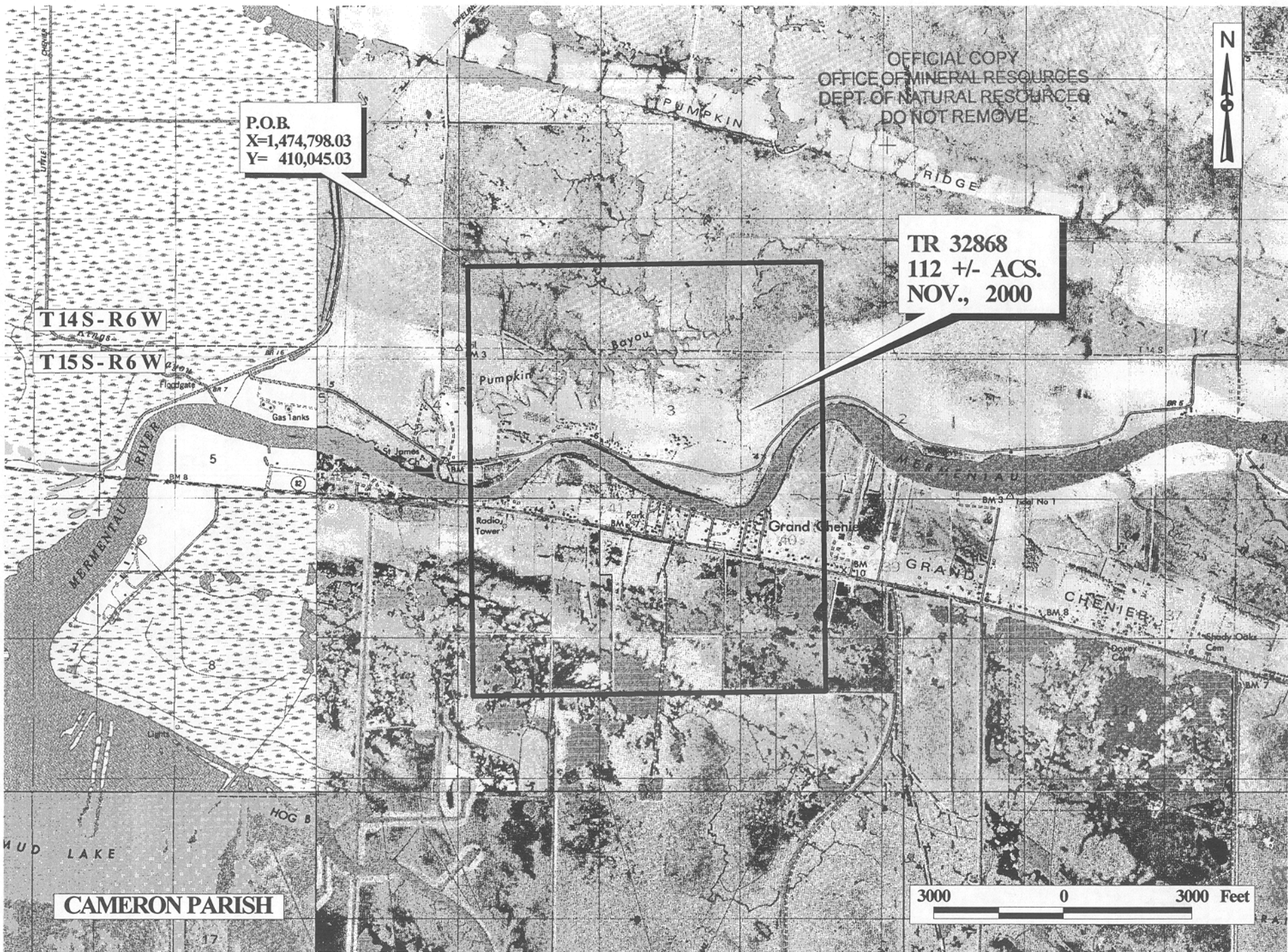
TR 32868  
112 +/- ACS.  
NOV., 2000

T14S-R6W

T15S-R6W

CAMERON PARISH

3000 0 3000 Feet



**TRACT 32869 - Cameron Parish, Louisiana**

All of the lands now or formerly constituting the beds and bottoms of all water bodies of every nature and description and all islands and other lands formed by accretion or reliction, except tax lands, owned by and not under mineral lease from the State of Louisiana on November 8, 2000, situated in Cameron Parish, Louisiana, within the following described boundaries: Beginning at a point having Coordinates of X = 1,482,986.45 and Y = 410,045.03; thence East 8,033.98 feet to a point having Coordinates of X = 1,491,020.43 and Y = 410,045.03; thence South 10,077.65 feet to a point having Coordinates of X = 1,491,020.43 and Y = 399,967.38; thence West 8,033.98 feet to a point having Coordinates of X = 1,482,986.45 and Y = 399,967.38; thence North 10,077.65 feet to the point of beginning, containing approximately **132 acres**, as shown outlined in red on a plat on file in the Office of Mineral Resources, Department of Natural Resources. All bearings, distances and coordinates are based on Louisiana Coordinate System of 1927 (South Zone).

NOTE: The State of Louisiana does hereby reserve, and this lease shall be subject to, the imprescriptible right of surface use in the nature of a servitude in favor of the Department of Natural Resources, including its Offices and Commissions, for the sole purpose of implementing, constructing, servicing and maintaining approved coastal zone management and/or restoration projects. Utilization of any and all rights derived under this lease by the mineral lessee, its agents, successors or assigns, shall not interfere with nor hinder the reasonable surface use by the Department of Natural Resources, its Offices or Commissions, as hereinabove reserved.

Applicant: Stephen M. Jenkins & Associates, Inc.

Bidder	Cash Payment	Price / Acre	Rental	Oil	Gas	Other

OFFICIAL COPY  
OFFICE OF MINERAL RESOURCES  
DEPT OF NATURAL RESOURCES  
DO NOT REMOVE

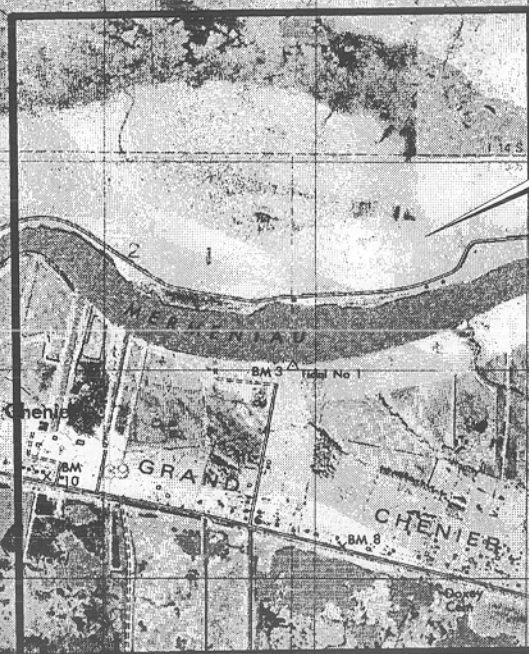


P.O.B.  
X=1,482,986.45  
Y= 410,045.03

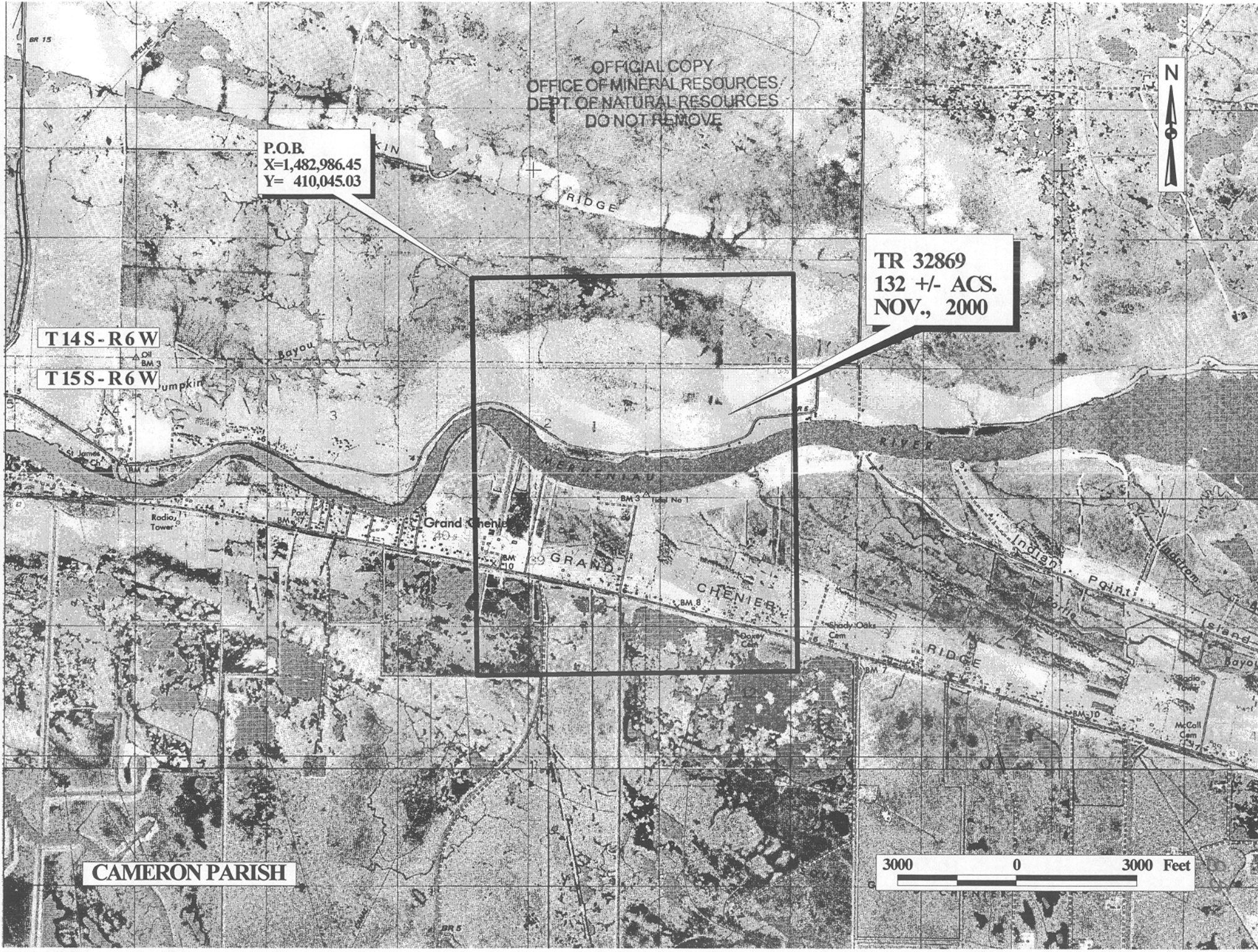
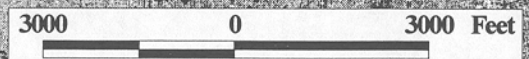
TR 32869  
132 +/- ACS.  
NOV., 2000

T14S-R6W

T15S-R6W



CAMERON PARISH



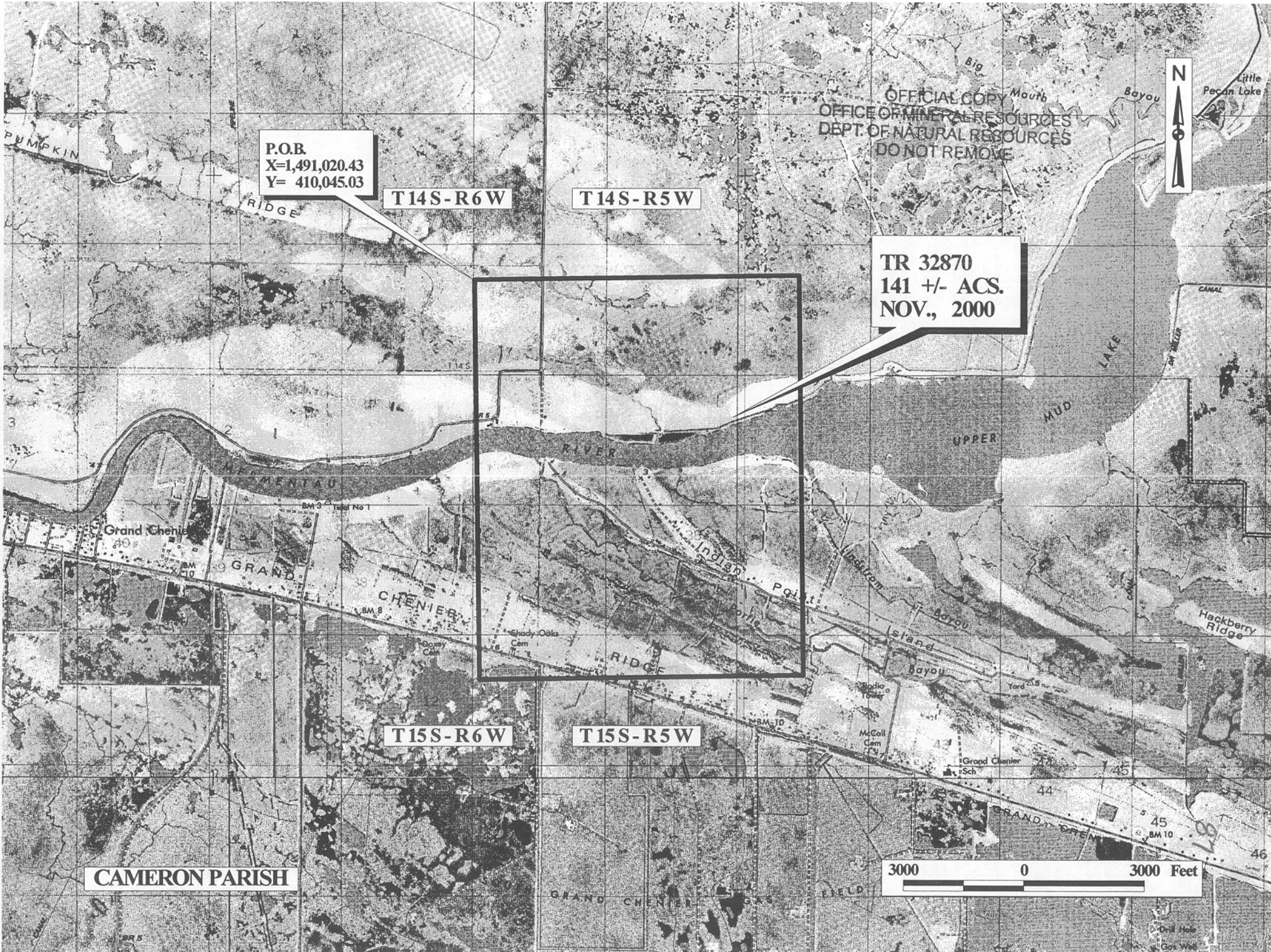
**TRACT 32870 - Cameron Parish, Louisiana**

All of the lands now or formerly constituting the beds and bottoms of all water bodies of every nature and description and all islands and other lands formed by accretion or reliction, except tax lands, owned by and not under mineral lease from the State of Louisiana on November 8, 2000, situated in Cameron Parish, Louisiana, within the following described boundaries: Beginning at a point having Coordinates of X = 1,491,020.43 and Y = 410,045.03; thence East 8,050.45 feet to a point having Coordinates of X = 1,499,070.88 and Y = 410,045.03; thence South 10,077.65 feet to a point having Coordinates of X = 1,499,070.88 and Y = 399,967.38; thence West 8,050.45 feet to a point having Coordinates of X = 1,491,020.43 and Y = 399,967.38; thence North 10,077.65 feet to the point of beginning, containing approximately **141 acres**, as shown outlined in red on a plat on file in the Office of Mineral Resources, Department of Natural Resources. All bearings, distances and coordinates are based on Louisiana Coordinate System of 1927 (South Zone).

NOTE: The State of Louisiana does hereby reserve, and this lease shall be subject to, the imprescriptible right of surface use in the nature of a servitude in favor of the Department of Natural Resources, including its Offices and Commissions, for the sole purpose of implementing, constructing, servicing and maintaining approved coastal zone management and/or restoration projects. Utilization of any and all rights derived under this lease by the mineral lessee, its agents, successors or assigns, shall not interfere with nor hinder the reasonable surface use by the Department of Natural Resources, its Offices or Commissions, as hereinabove reserved.

Applicant: Stephen M. Jenkins & Associates, Inc.

Bidder	Cash Payment	Price / Acre	Rental	Oil	Gas	Other



OFFICIAL COPY  
OFFICE OF MINERAL RESOURCES  
DEPT. OF NATURAL RESOURCES  
DO NOT REMOVE

P.O.B.  
X=1,491,020.43  
Y= 410,045.03

T14S-R6W

T14S-R5W

TR 32870  
141 +/- ACS.  
NOV., 2000

T15S-R6W

T15S-R5W

CAMERON PARISH

3000 0 3000 Feet