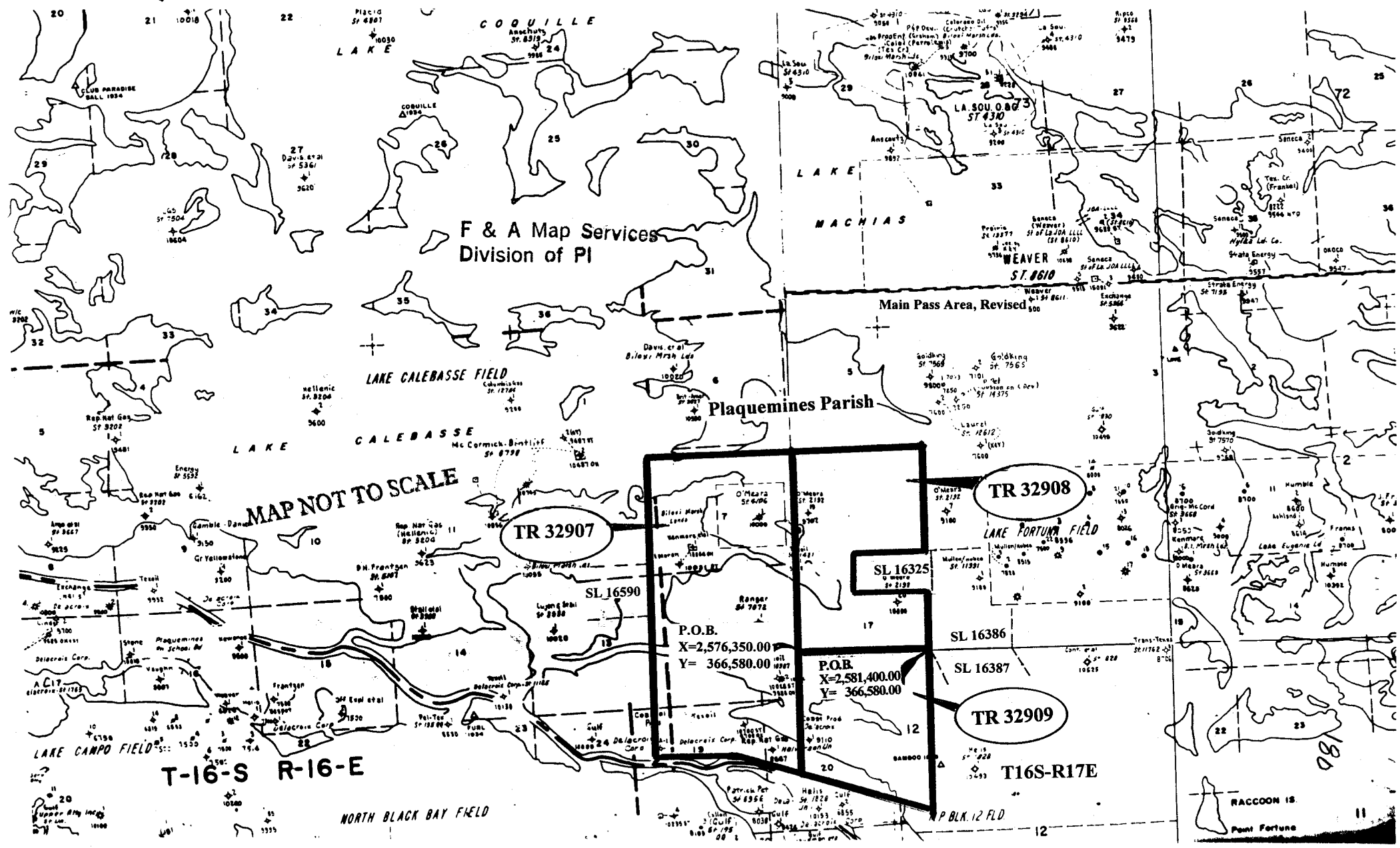


**NOT TO BE USED WITH A PORTION BID  
FOR INFORMATIONAL PURPOSES ONLY!**



F & A Map Services  
Division of PI

MAP NOT TO SCALE

**TR 32907**

**SL 16325**  
St 2192

**TR 32908**

**SL 16386**

**SL 16387**

**TR 32909**

**P.O.B.**  
X=2,576,350.00  
Y=366,580.00

**P.O.B.**  
X=2,581,400.00  
Y=366,580.00

**T-16-S R-16-E**

**T16S-R17E**

T-16-S R-16-E

T16S-R17E

NORTH BLACK BAY FIELD

P.BLK. 12 FLD

RACCOON IS.

Pont Fortune

**TRACT 32907 - St. Bernard Parish, Louisiana**

All of the lands now or formerly constituting the beds and bottoms of all water bodies of every nature and description and all islands and other lands formed by accretion or reliction, except tax lands, owned by and not under mineral lease from the State of Louisiana on November 8, 2000, situated in St. Bernard Parish, Louisiana, within the following described boundaries: Beginning at a point having Coordinates of X = 2,576,350.00 and Y = 366,580.00; thence South 4,580.00 feet to a point having Coordinates of X = 2,576,350.00 and Y = 362,000.00; thence North 70 degrees 49 minutes 16 seconds West 2,435.16 feet to a point having Coordinates of X = 2,574,050.00 and Y = 362,800.00; thence West 3,250.00 feet to a point having Coordinates of X = 2,570,800.00 and Y = 362,800.00; thence North 5,555.00 feet to the most Eastern Southeast corner of State Lease No. 16590 having Coordinates of X = 2,570,800.00 and Y = 368,355.00; thence North 1,950.00 feet along the East line of said State Lease No. 16590 to its most Eastern Northeast corner having Coordinates of X = 2,570,800.00 and Y = 370,305.00; thence North 4,295.00 feet to a point having Coordinates of X = 2,570,800.00 and Y = 374,600.00; thence East 5,550.00 feet to a point having Coordinates of X = 2,576,350.00 and Y = 374,600.00; thence South 8,020.00 feet to the point of beginning, containing approximately 976 acres, as shown outlined in red on a plat on file in the Office of Mineral Resources, Department of Natural Resources. All bearings, distances and coordinates are based on Louisiana Coordinate System of 1927 (South Zone).

NOTE: The above tract is located in or near an oyster restricted area and all operations in such area must be conducted in strict conformity with the stipulations and/or regulations of the Louisiana Department of Wildlife and Fisheries.

NOTE: The State of Louisiana does hereby reserve, and this lease shall be subject to, the imprescriptible right of surface use in the nature of a servitude in favor of the Department of Natural Resources, including its Offices and Commissions, for the sole purpose of implementing, constructing, servicing and maintaining approved coastal zone management and/or restoration projects. Utilization of any and all rights derived under this lease by the mineral lessee, its agents, successors or assigns, shall not interfere with nor hinder the reasonable surface use by the Department of Natural Resources, its Offices or Commissions, as hereinabove reserved.

Applicant: Laura B. Gustafson

Bidder	Cash Payment	Price / Acre	Rental	Oil	Gas	Other

OFFICIAL COPY  
OFFICE OF METALS & MINES  
DEPT. OF NATURAL RESOURCES  
DO NOT REMOVE



MAIN PASS AREA, REVISED

BLOCK 1

T 16 S - R 16 E

T 16 S - R 17 E

TR 32907  
976 +/- ACS.  
NOV., 2000

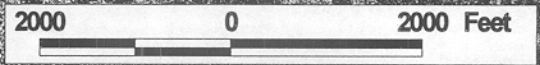
SL 16590

P.O.B.  
X=2,576,350.00  
Y= 366,580.00

BLOCK 12

PLAQUEMINES  
PARISH

ST. BERNARD  
PARISH



**TRACT 32908 - PORTION OF BLOCK 1, MAIN PASS AREA, REVISED, St. Bernard Parish, Louisiana**

All of the lands now or formerly constituting the beds and bottoms of all water bodies of every nature and description and all islands and other lands formed by accretion or reliction, except tax lands, belonging to the State of Louisiana and not under mineral lease on November 8, 2000, situated in St. Bernard Parish, Louisiana, and more particularly described as follows: Beginning at the Southwest corner of Block 1, Main Pass Area, Revised, having Coordinates of X = 2,576,350.00 and Y = 366,580.00; thence North 8,020.00 feet along the West line of said Block 1 to a point having Coordinates of X = 2,576,350.00 and Y = 374,600.00; thence East 5,050.00 feet to a point having Coordinates of X = 2,581,400.00 and Y = 374,600.00; thence South 4,015.14 feet to the Northwest corner of State Lease No. 16386, also being the Northeast corner of State Lease No. 16325, having Coordinates of X = 2,581,400.00 and Y = 370,584.86; thence along the boundaries of said State Lease No. 16325 the following courses and distances: South 87 degrees 13 minutes 04 seconds West 2,798.52 feet, South 1,549.02 feet and East 2,795.22 feet to its Southeast corner, located on the West line of said State Lease No. 16386, having Coordinates of X = 2,581,400.00 and Y = 368,900.00; thence South 2,320.00 feet along the West line of said State Lease No. 16386 to its Southwest corner, located on the South line of said Block 1, having Coordinates of X = 2,581,400.00 and Y = 366,580.00; thence West 5,050.00 feet along the South line of said Block 1 to the point of beginning, containing approximately 796 acres, as shown outlined in red on a plat on file in the Office of Mineral Resources, Department of Natural Resources. All bearings, distances and coordinates are based on Louisiana Coordinate System of 1927 (South Zone).

NOTE: The above tract is located in or near an oyster restricted area and all operations in such area must be conducted in strict conformity with the stipulations and/or regulations of the Louisiana Department of Wildlife and Fisheries.

NOTE: The State of Louisiana does hereby reserve, and this lease shall be subject to, the imprescriptible right of surface use in the nature of a servitude in favor of the Department of Natural Resources, including its Offices and Commissions, for the sole purpose of implementing, constructing, servicing and maintaining approved coastal zone management and/or restoration projects. Utilization of any and all rights derived under this lease by the mineral lessee, its agents, successors or assigns, shall not interfere with nor hinder the reasonable surface use by the Department of Natural Resources, its Offices or Commissions, as hereinabove reserved.

Applicant: Laura B. Gustafson

Bidder	Cash Payment	Price / Acre	Rental	Oil	Gas	Other

185

M A C H

OFFICIAL COPY  
OFFICE OF MINERAL RESOURCES  
DEPT. OF NATURAL RESOURCES  
DO NOT REMOVE



BLOCK 1

4  
9

TR 32908  
796 +/- ACS.  
NOV., 2000

Oil Wells

L A K E

SL 16325

F E R T U N A

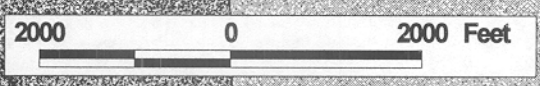
SL 16386

L  
A  
K  
E

P.O.B.  
X=2,576,350.00  
Y= 366,580.00

BLOCK 12

MAIN PASS AREA, REVISED  
ST. BERNARD PARISH



ST. BERNARD PARISH  
PLAQUEMINES PARISH

**TRACT 32909 - PORTION OF BLOCK 12, MAIN PASS AREA, REVISED, St. Bernard Parish, Louisiana**

All of the lands now or formerly constituting the beds and bottoms of all water bodies of every nature and description and all islands and other lands formed by accretion or reliction, except tax lands, belonging to the State of Louisiana and not under mineral lease on November 8, 2000, situated in St. Bernard Parish, Louisiana, and more particularly described as follows: Beginning at the Northwest corner of State Lease No. 16387, which lies on the North line of Block 12, Main Pass Area, Revised, having Coordinates of X = 2,581,400.00 and Y = 366,580.00; thence South 6,305.00 feet to a point having Coordinates of X = 2,581,400.00 and Y = 360,275.00; thence North 71 degrees 08 minutes 26 seconds West 5,336.49 feet to a point on the West line of said Block 12 having Coordinates of X = 2,576,350.00 and Y = 362,000.00; thence North 4,580.00 feet along said West line of said Block 12 to its Northwest corner having Coordinates of X = 2,576,350.00 and Y = 366,580.00; thence East along said North line of said Block 12 5,050.00 feet to the point of beginning, containing approximately **574 acres**, as shown outlined in red on a plat on file in the Office of Mineral Resources, Department of Natural Resources. All bearings, distances and coordinates are based on Louisiana Coordinate System of 1927 (South Zone).

NOTE: The above tract is located in or near an oyster restricted area and all operations in such area must be conducted in strict conformity with the stipulations and/or regulations of the Louisiana Department of Wildlife and Fisheries.

NOTE: The State of Louisiana does hereby reserve, and this lease shall be subject to, the imprescriptible right of surface use in the nature of a servitude in favor of the Department of Natural Resources, including its Offices and Commissions, for the sole purpose of implementing, constructing, servicing and maintaining approved coastal zone management and/or restoration projects. Utilization of any and all rights derived under this lease by the mineral lessee, its agents, successors or assigns, shall not interfere with nor hinder the reasonable surface use by the Department of Natural Resources, its Offices or Commissions, as hereinabove reserved.

Applicant: Laura B. Gustafson

Bidder	Cash Payment	Price / Acre	Rental	Oil	Gas	Other

