

**NOT TO BE USED WITH A PORTION BID
FOR INFORMATIONAL PURPOSES ONLY!**

MAP NOT TO SCALE

OUTLET

TEX. GAS EXPL.
ST. 8968

ST. BERNARD
PLAQUEMINES

F & A Map Services
Division of PI

MAIN PASS AREA
BRETON SOUND AREA

P.O.B.
X=2,650,100.00
Y= 351,830.00

TR 32904

TR 32905

MAIN PASS BLK. 21 FLD.
P.O.B.
X=2,635,350.00
Y= 337,080.00

SAMEDAN
ST. 7895

CALCO
ST. 4180

OIL & GAS FILT.
(ODECO)
ST. 4126

ODECO
ST. 4127

BRETON S

TRACT 32904 - PORTION OF BLOCK 17, BRETON SOUND AREA, Plaquemines Parish, Louisiana

All of the lands now or formerly constituting the beds and bottoms of all water bodies of every nature and description and all islands and other lands formed by accretion or reliction, except tax lands, belonging to the State of Louisiana and not under mineral lease on November 8, 2000, situated in Plaquemines Parish, Louisiana, and more particularly described as follows: Beginning at the Northeast corner of Block 17, Breton Sound Area, having Coordinates of X = 2,650,100.00 and Y = 351,830.00; thence South 7,375.00 feet along the East line of said Block 17 to a point having Coordinates of X = 2,650,100.00 and Y = 344,455.00; thence West 14,750.00 feet to a point on the West line of said Block 17 having Coordinates of X = 2,635,350.00 and Y = 344,455.00; thence North 7,375.00 feet along the West line of said Block 17 to its Northwest corner having Coordinates of X = 2,635,350.00 and Y = 351,830.00; thence East 14,750.00 feet along the North line of said Block 17 to the point of beginning, containing approximately **2,497.27 acres**, as shown outlined in red on a plat on file in the Office of Mineral Resources, Department of Natural Resources. All bearings, distances and coordinates are based on Louisiana Coordinate System of 1927 (South Zone).

NOTE: It appears, according to our records, that a portion of this tract is located within the restrictive safety fairway area as set out by the Corps of Engineers, U.S. Army.

NOTE: The State of Louisiana does hereby reserve, and this lease shall be subject to, the imprescriptible right of surface use in the nature of a servitude in favor of the Department of Natural Resources, including its Offices and Commissions, for the sole purpose of implementing, constructing, servicing and maintaining approved coastal zone management and/or restoration projects. Utilization of any and all rights derived under this lease by the mineral lessee, its agents, successors or assigns, shall not interfere with nor hinder the reasonable surface use by the Department of Natural Resources, its Offices or Commissions, as hereinabove reserved.

Applicant: Robert A. Schroeder, Inc.

Bidder	Cash Payment	Price / Acre	Rental	Oil	Gas	Other



P.O.B.
X=2,650,100.00
Y= 351,830.00

BLOCK 16

BLOCK 9

BLOCK 15

BLOCK 16

BLOCK 18

MAIN PASS AREA, REVISED

BRETON SOUND AREA

TR 32904
2,497.27 +/- ACS.
NOV., 2000

BLOCK 17

PLAQUEMINES PARISH

OFFICIAL COPY
OFFICE OF MINERAL RESOURCES
DEPT. OF NATURAL RESOURCES
DO NOT REMOVE



TRACT 32905 - PORTION OF BLOCK 17, BRETON SOUND AREA, Plaquemines Parish, Louisiana

All of the lands now or formerly constituting the beds and bottoms of all water bodies of every nature and description and all islands and other lands formed by accretion or reliction, except tax lands, belonging to the State of Louisiana and not under mineral lease on November 8, 2000, situated in Plaquemines Parish, Louisiana, and more particularly described as follows: Beginning at the Southwest corner of Block 17, Breton Sound Area, having Coordinates of X = 2,635,350.00 and Y = 337,080.00; thence North 7,375.00 feet along the West line of said Block 17 to a point having Coordinates of X = 2,635,350.00 and Y = 344,455.00; thence East 14,750.00 feet to a point on the East line of said Block 17 having Coordinates of X = 2,650,100.00 and Y = 344,455.00; thence South 7,375.00 feet along the East line of said Block 17 to its Southeast corner having Coordinates of X = 2,650,100.00 and Y = 337,080.00; thence West 14,750.00 feet along the South line of said Block 17 to the point of beginning, containing approximately 2,497.27 acres, as shown outlined in red on a plat on file in the Office of Mineral Resources, Department of Natural Resources. All bearings, distances and coordinates are based on Louisiana Coordinate System of 1927 (South Zone).

NOTE: It appears, according to our records, that a portion of this tract is located within the restrictive safety fairway area as set out by the Corps of Engineers, U.S. Army.

NOTE: The State of Louisiana does hereby reserve, and this lease shall be subject to, the imprescriptible right of surface use in the nature of a servitude in favor of the Department of Natural Resources, including its Offices and Commissions, for the sole purpose of implementing, constructing, servicing and maintaining approved coastal zone management and/or restoration projects. Utilization of any and all rights derived under this lease by the mineral lessee, its agents, successors or assigns, shall not interfere with nor hinder the reasonable surface use by the Department of Natural Resources, its Offices or Commissions, as hereinabove reserved.

Applicant: Robert A. Schroeder, Inc.

Bidder	Cash Payment	Price / Acre	Rental	Oil	Gas	Other



MAIN PASS AREA, REVISED

BRETON SOUND AREA

BLOCK 17

TR 32905
2,497.27 +/- ACS.
NOV., 2000

BLOCK 16

BLOCK 18

BLOCK 21

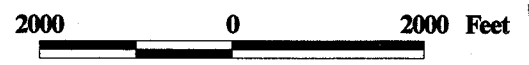
BLOCK 32

BLOCK 31

P.O.B.
X=2,635,350.00
Y= 337,080.00

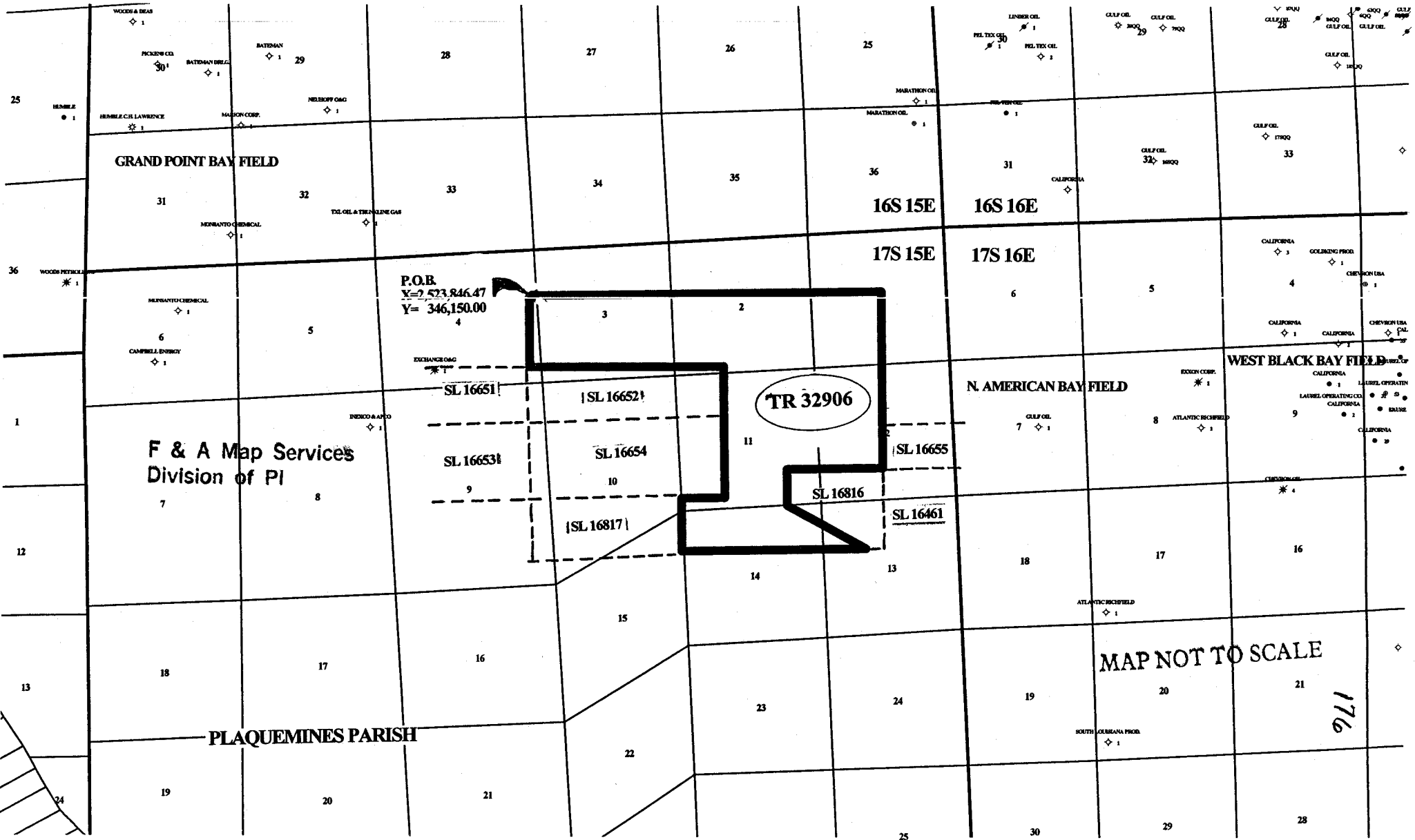
PLAQUEMINES PARISH

OFFICIAL COPY
OFFICE OF MINERAL RESOURCES
DEPT. OF NATURAL RESOURCES
DO NOT REMOVE



175

**NOT TO BE USED WITH A PORTION BID
FOR INFORMATIONAL PURPOSES ONLY!**



F & A Map Services
Division of PI

P.O.B.
X=7,523,846.47
Y=346,150.00

TR 32906

N. AMERICAN BAY FIELD

WEST BLACK BAY FIELD

MAP NOT TO SCALE

PLAQUEMINES PARISH

176

TRACT 32906 - Plaquemines Parish, Louisiana

All of the lands now or formerly constituting the beds and bottoms of all water bodies of every nature and description and all islands and other lands formed by accretion or reliction, except tax lands, owned by and not under mineral lease from the State of Louisiana on November 8, 2000, situated in Plaquemines Parish, Louisiana, within the following described boundaries: Beginning at a point having Coordinates of X = 2,523,846.47 and Y = 346,150.00; thence East 13,535.53 feet to a point having Coordinates of X = 2,537,382.00 and Y = 346,150.00; thence South 5,000.00 feet to the Northwest corner of State Lease No. 16655 having Coordinates of X = 2,537,382.00 and Y = 341,150.00; thence South 1,885.00 feet along the West boundary of said State Lease No. 16655 to its Southwest corner, also being the Northwest corner of State Lease No. 16461 and the Northeast corner of State Lease No. 16816, said point having Coordinates of X = 2,537,382.00 and Y = 339,265.00; thence along the boundaries of said State Lease No. 16816 the following courses and distances: West 3,700.00, South 1,400.00 feet and South 60 degrees 25 minutes 20 seconds East 3,474.44 feet to its Southwest corner having Coordinates of X = 2,536,703.67 and Y = 336,150.00; thence West 7,054.62 feet to the Southeast corner of State Lease No. 16817 having Coordinates of X = 2,529,649.05 and Y = 336,150.00; thence North 2,050.00 feet along the East boundary of said State Lease No. 16817 to its Northeast corner located on the South boundary of State Lease No. 16654 having Coordinates of X = 2,529,649.05 and Y = 338,200.00; thence along the South and East boundary of said State Lease No. 16654 the following courses and distances: East 1,650.95 feet and North 2,950.00 feet to its Northeast corner, also being the Southeast corner of State Lease No. 16652 having Coordinates of X = 2,531,300.00 and Y = 341,150.00; thence along the East and North boundary of said State Lease No. 16652 the following courses and distances: North 2,150.00 feet and North 89 degrees 29 minutes 35 seconds West 7,453.82 feet to its Northwest corner, also being the Northeast corner of State Lease No. 16651 having Coordinates of X = 2,523,846.47 and Y = 343,365.96; thence North 2,784.04 feet to the point of beginning, containing approximately 1,432 acres, as shown outlined in red on a plat on file in the Office of Mineral Resources, Department of Natural Resources. All bearings, distances and coordinates are based on Louisiana Coordinate System of 1927 (South Zone).

NOTE: The above tract is located in or near an oyster restricted area and all operations in such area must be conducted in strict conformity with the stipulations and/or regulations of the Louisiana Department of Wildlife and Fisheries.

NOTE: The State of Louisiana does hereby reserve, and this lease shall be subject to, the imprescriptible right of surface use in the nature of a servitude in favor of the Department of Natural Resources, including its Offices and Commissions, for the sole purpose of implementing, constructing, servicing and maintaining approved coastal zone management and/or restoration projects. Utilization of any and all rights derived under this lease by the mineral lessee, its agents, successors or assigns, shall not interfere with nor hinder the reasonable surface use by the Department of Natural Resources, its Offices or Commissions, as hereinabove reserved.

Tract Advertised by the State Mineral Board

Bidder	Cash Payment	Price / Acre	Rental	Oil	Gas	Other

OFFICIAL COPY
OFFICE OF MINERAL RESOURCES
DEPT. OF NATURAL RESOURCES
DO NOT REMOVE



P.O.B.
X=2,523,846.47
Y= 346,150.00

T17S - R15E

TR 32906
1,432 +/- ACS.
NOV., 2000

SL 16651

SL 16652

SL 16653

SL 16654

SL 16655

SL 16816

SL 16461

SL 16817

PLAQUEMINES PARISH

