

**TRACT 32900 - PORTION OF BLOCK 46, BRETON SOUND AREA, Plaquemines Parish, Louisiana**

All of the lands now or formerly constituting the beds and bottoms of all water bodies of every nature and description and all islands and other lands formed by accretion or reliction, except tax lands, belonging to the State of Louisiana and not under mineral lease on November 8, 2000, situated in Plaquemines Parish, Louisiana, and more particularly described as follows: Beginning at the Southeast corner of Block 46, Breton Sound Area, having Coordinates of X = 2,679,600.00 and Y = 292,830.00; thence North 14,750.00 feet on the East line of said Block 46 to its Northeast corner having Coordinates of X = 2,679,600.00 and Y = 307,580.00; thence West 7,375.00 feet on the North line of said Block 46 to a point having Coordinates of X = 2,672,225.00 and Y = 307,580.00; thence South 14,750.00 feet to a point on the South line of said Block 46 having Coordinates of X = 2,672,225.00 and Y = 292,830.00; thence East 7,375.00 feet on said South line of said Block 46 to the point of beginning, containing approximately **2,250 acres**, as shown outlined in red on a plat on file in the Office of Mineral Resources, Department of Natural Resources. All bearings, distances and coordinates are based on Louisiana Coordinate System of 1927 (South Zone).

NOTE: The State of Louisiana does hereby reserve, and this lease shall be subject to, the imprescriptible right of surface use in the nature of a servitude in favor of the Department of Natural Resources, including its Offices and Commissions, for the sole purpose of implementing, constructing, servicing and maintaining approved coastal zone management and/or restoration projects. Utilization of any and all rights derived under this lease by the mineral lessee, its agents, successors or assigns, shall not interfere with nor hinder the reasonable surface use by the Department of Natural Resources, its Offices or Commissions, as hereinabove reserved.

Applicant: Robert A. Schroeder, Inc.

Bidder	Cash Payment	Price / Acre	Rental	Oil	Gas	Other

OFFICIAL COPY  
OFFICE OF MINERAL RESOURCES  
DEPT. OF NATURAL RESOURCES  
DO NOT REMOVE

BLK. 35

BLK. 36



TR 32900  
2,250 +/- ACS.  
NOV., 2000

SOUND

ETON

BLK. 46

BLK. 45

BRETON

NAT

14 West Point  
23

13  
24

BRETON 19

P.O.B.  
X= 2,679,600.00  
Y= 292,830.00

BLK. 51

BLK. 52

BRETON SOUND AREA  
PLAQUEMINES PARISH

2000 0 2000 Feet



NOT TO BE USED WITH A PORTION BID  
FOR INFORMATIONAL PURPOSES ONLY!

MAP NOT TO SCALE

BRETON SG D BLK 30 FLA.

P.O.B.  
X=2,679,600.00  
Y= 322,330.00

TR 32901

SL 1230

KERR MC GEE  
SL 1230

TR 32902

SL 1230

BLOCK 46

BRETON SOUND AREA  
PLAQUEMINES PARISH

BLOCK 45

BRETON ISLAND LIGHT HB  
S. 2,507,002.14  
T. 200,000.00

KERR - MC GEE  
SL 1237

S.L. 1999

KERR - MC GEE  
STATE 1999

TR 32903

P.O.B.  
X=2,709,100.00  
Y= 322,330.00

KERR MC GEE  
SL 4409

37

SAFETY  
FAIRWAY

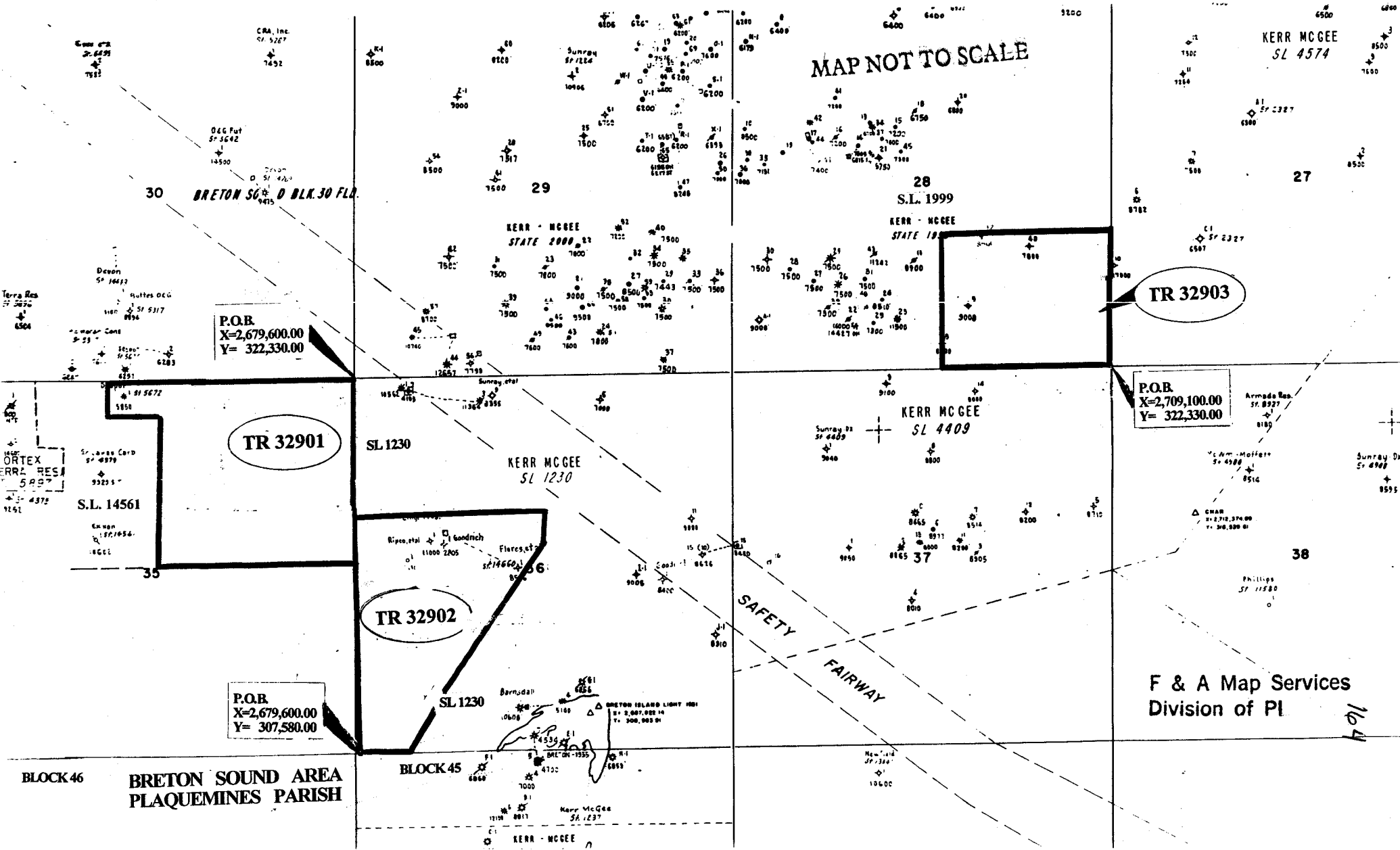
F & A Map Services  
Division of Pl

164

KERR MC GEE  
SL 4574

27

38



**TRACT 32901 - PORTION OF BLOCK 35, BRETON SOUND AREA, Plaquemines Parish, Louisiana**

All of the lands now or formerly constituting the beds and bottoms of all water bodies of every nature and description and all islands and other lands formed by accretion or reliction, except tax lands, belonging to the State of Louisiana and not under mineral lease on November 8, 2000, situated in Plaquemines Parish, Louisiana, and more particularly described as follows: Beginning at the Northeast corner of Block 35, Breton Sound Area, having Coordinates of X = 2,679,600.00 and Y = 322,330.00; thence South 7,375.00 feet along the East line of said Block 35 to a point having Coordinates of X = 2,679,600.00 and Y = 314,955.00; thence West 7,500.00 feet to the Southeast corner of State Lease No. 14561, as amended, having Coordinates of X = 2,672,100.00 and Y = 314,955.00; thence along the boundaries of said State Lease No. 14561 the following courses: North 6,055.00 feet to a corner having Coordinates of X = 2,672,100.00 and Y = 321,010.00, West 2,160.00 feet to a corner having Coordinates of X = 2,669,940.00 and Y = 321,010.00 and North 1,320.00 feet to a corner on the North line of said Block 35 having Coordinates of X = 2,669,940.00 and Y = 322,330.00; thence East 9,660.00 feet along said North line of said Block 35 to the point of beginning, containing approximately 1,335.26 acres, as shown outlined in red on a plat on file in the Office of Mineral Resources, Department of Natural Resources. All bearings, distances and coordinates are based on Louisiana Coordinate System of 1927 (South Zone).

NOTE: It appears, according to our records, that a portion of this tract is located within the restrictive safety fairway area as set out by the Corps of Engineers, U.S. Army.

NOTE: The State of Louisiana does hereby reserve, and this lease shall be subject to, the imprescriptible right of surface use in the nature of a servitude in favor of the Department of Natural Resources, including its Offices and Commissions, for the sole purpose of implementing, constructing, servicing and maintaining approved coastal zone management and/or restoration projects. Utilization of any and all rights derived under this lease by the mineral lessee, its agents, successors or assigns, shall not interfere with nor hinder the reasonable surface use by the Department of Natural Resources, its Offices or Commissions, as hereinabove reserved.

Applicant: Robert A. Schroeder, Inc.

Bidder	Cash Payment	Price / Acre	Rental	Oil	Gas	Other



P.O.B.  
X=2,679,600.00  
Y= 322,330.00

BLOCK 30

BLOCK 29

SL 1230

TR 32901  
1,335.26 +/- ACS.  
NOV., 2000

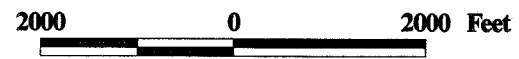
SL 14561

BLOCK 35

BLOCK 36

OFFICIAL COPY  
OFFICE OF MINERAL RESOURCES  
DEPT. OF NATURAL RESOURCES  
DO NOT REMOVE

BRETON SOUND AREA  
PLAQUEMINES PARISH



166  
976

**TRACT 32902 - PORTION OF BLOCK 36, BRETON SOUND AREA, Plaquemines Parish, Louisiana**

That portion of Block 36, Breton Sound Area, Plaquemines Parish, Louisiana, belonging to the State of Louisiana and not under mineral lease on November 8, 2000, described as follows: Beginning at the Southwest corner of Block 36, Breton Sound Area, having Coordinates of X = 2,679,600.00 and Y = 307,580.00; thence North 9,700.00 feet on the West line of said Block 36 to the Northernmost Southwest corner of State Lease No. 1230, as amended, having Coordinates of X = 2,679,600.00 and Y = 317,280.00; thence East 7,500.00 feet on the Northernmost South line of said State Lease No. 1230 to an inner corner having Coordinates of X = 2,687,100.00 and Y = 317,280.00; thence on the Easternmost West line of said State Lease No. 1230 the following courses: South 1,300.00 feet, South 37 degrees 20 minutes 00 seconds West 7,420.24 feet to a point having Coordinates of X = 2,682,600.00 and Y = 310,080.00 and South 21 degrees 48 minutes 05 seconds West 2,692.58 feet to a point on the South line of said Block 36, also being the Southernmost Southwest corner of said State Lease No. 1230 having Coordinates of X = 2,681,600.00 and Y = 307,580.00; thence West 2,000.00 feet on the South line of said Block 36 to the point of beginning, containing approximately 1,078.40 acres, as shown outlined in red on a plat on file in the Office of Mineral Resources, Department of Natural Resources. All bearings, distances and coordinates are based on Louisiana Coordinate System of 1927 (South Zone).

NOTE: It appears, according to our records, that a portion of this tract is located within the restrictive safety fairway area as set out by the Corps of Engineers, U.S. Army.

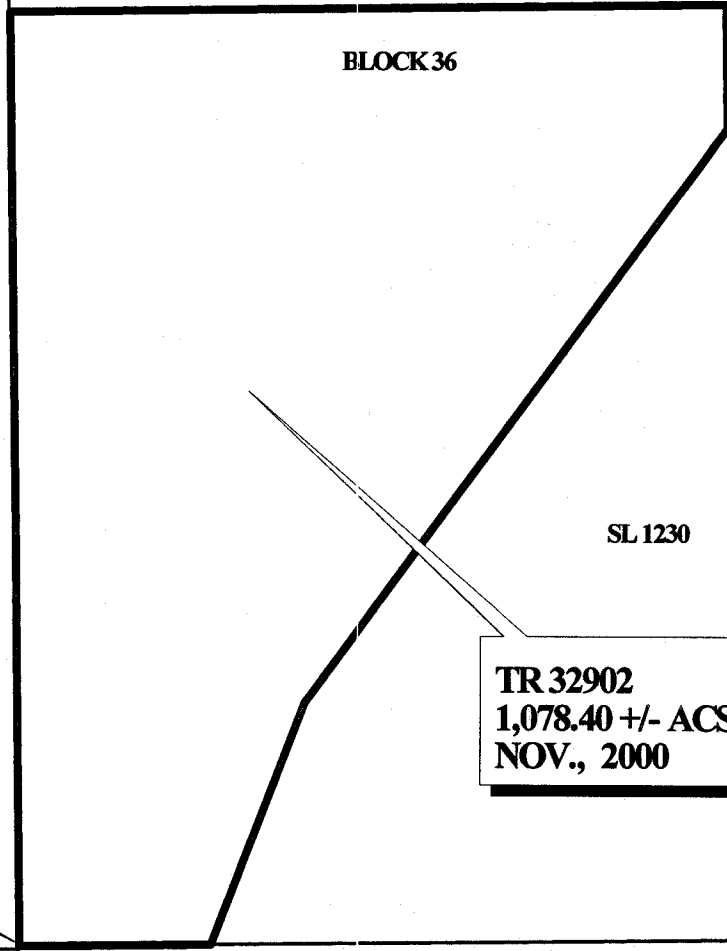
NOTE: The State of Louisiana does hereby reserve, and this lease shall be subject to, the imprescriptible right of surface use in the nature of a servitude in favor of the Department of Natural Resources, including its Offices and Commissions, for the sole purpose of implementing, constructing, servicing and maintaining approved coastal zone management and/or restoration projects. Utilization of any and all rights derived under this lease by the mineral lessee, its agents, successors or assigns, shall not interfere with nor hinder the reasonable surface use by the Department of Natural Resources, its Offices or Commissions, as hereinabove reserved.

Applicant: Robert A. Schroeder, Inc.

Bidder	Cash Payment	Price / Acre	Rental	Oil	Gas	Other



OFFICIAL COPY  
OFFICE OF MINERAL RESOURCES  
DEPT. OF NATURAL RESOURCES  
DO NOT REMOVE



BLOCK 36

SL 1230

TR 32902  
1,078.40 +/- ACS.  
NOV., 2000

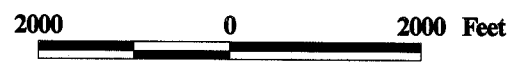
P.O.B.  
X=2,679,600.00  
Y= 307,580.00

BLOCK 35

BLOCK 46

BLOCK 45

BRETON SOUND AREA  
PLAQUEMINES PARISH



**TRACT 32903 - PORTION OF BLOCK 28, BRETON SOUND AREA, Plaquemines Parish, Louisiana**

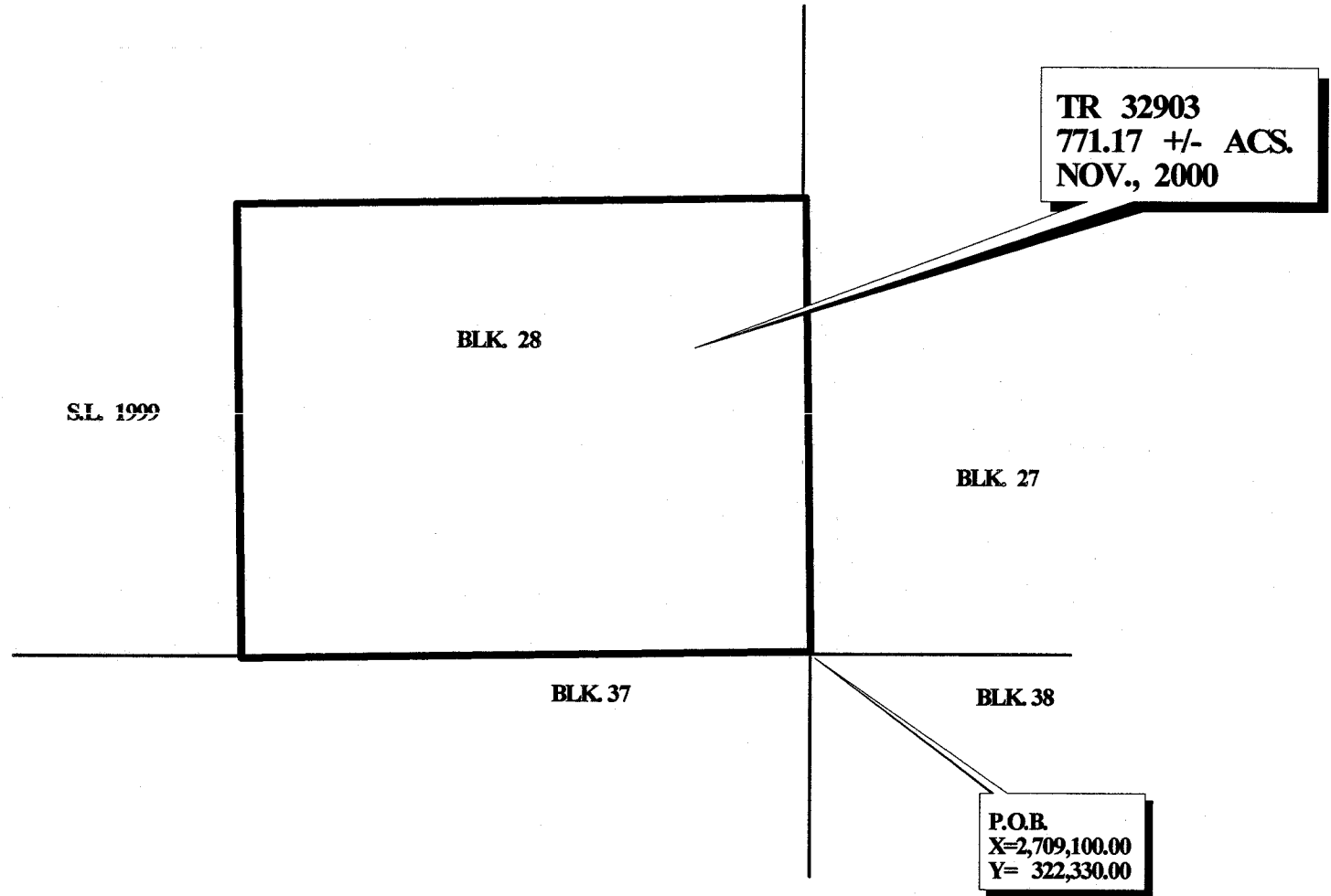
All of the lands now or formerly constituting the beds and bottoms of all water bodies of every nature and description and all islands and other lands formed by accretion or reliction, except tax lands, belonging to the State of Louisiana and not under mineral lease on November 8, 2000, situated in Plaquemines Parish, Louisiana, and more particularly described as follows: Beginning at the Southeast corner of Block 28, Breton Sound Area, having Coordinates of X = 2,709,100.00 and Y = 322,330.00; thence West 6,460.00 feet along the South line of said Block 28 to the Southernmost Southwest corner of State Lease No. 1999 having Coordinates of X = 2,702,640.00 and Y = 322,330.00; thence North 5,200.00 feet along the boundary of said State Lease No. 1999 to a Southern corner having Coordinates of X = 2,702,640.00 and Y = 327,530.00; thence East 6,460.00 feet to the Southeast corner of said State Lease No. 1999 which lies on the East line of said Block 28 having Coordinates of X = 2,709,100.00 and Y = 327,530.00; thence South 5,200.00 feet along said East line of said Block 28 to the point of beginning, containing approximately **771.17 acres**, as shown outlined in red on a plat on file in the Office of Mineral Resources, Department of Natural Resources. All bearings, distances and coordinates are based on Louisiana Coordinate System of 1927 (South Zone).

NOTE: The State of Louisiana does hereby reserve, and this lease shall be subject to, the imprescriptible right of surface use in the nature of a servitude in favor of the Department of Natural Resources, including its Offices and Commissions, for the sole purpose of implementing, constructing, servicing and maintaining approved coastal zone management and/or restoration projects. Utilization of any and all rights derived under this lease by the mineral lessee, its agents, successors or assigns, shall not interfere with nor hinder the reasonable surface use by the Department of Natural Resources, its Offices or Commissions, as hereinabove reserved.

Applicant: Robert A. Schroeder, Inc.

Bidder	Cash Payment	Price / Acre	Rental	Oil	Gas	Other





**TR 32903**  
**771.17 +/- ACS.**  
**NOV., 2000**

**BLK. 28**

**S.L. 1999**

**BLK. 27**

**BLK. 37**

**BLK. 38**

**P.O.B.**  
**X=2,709,100.00**  
**Y= 322,330.00**

**OFFICIAL COPY**  
**OFFICE OF MINERAL RESOURCES**  
**DEPT. OF NATURAL RESOURCES**  
**DO NOT REMOVE**

**BRETON SOUND AREA**  
**PLAQUEMINES PARISH**

