

NOT TO BE USED WITH A PORTION BID  
FOR INFORMATIONAL PURPOSES ONLY!

BRETON SOUND BLK 33

33

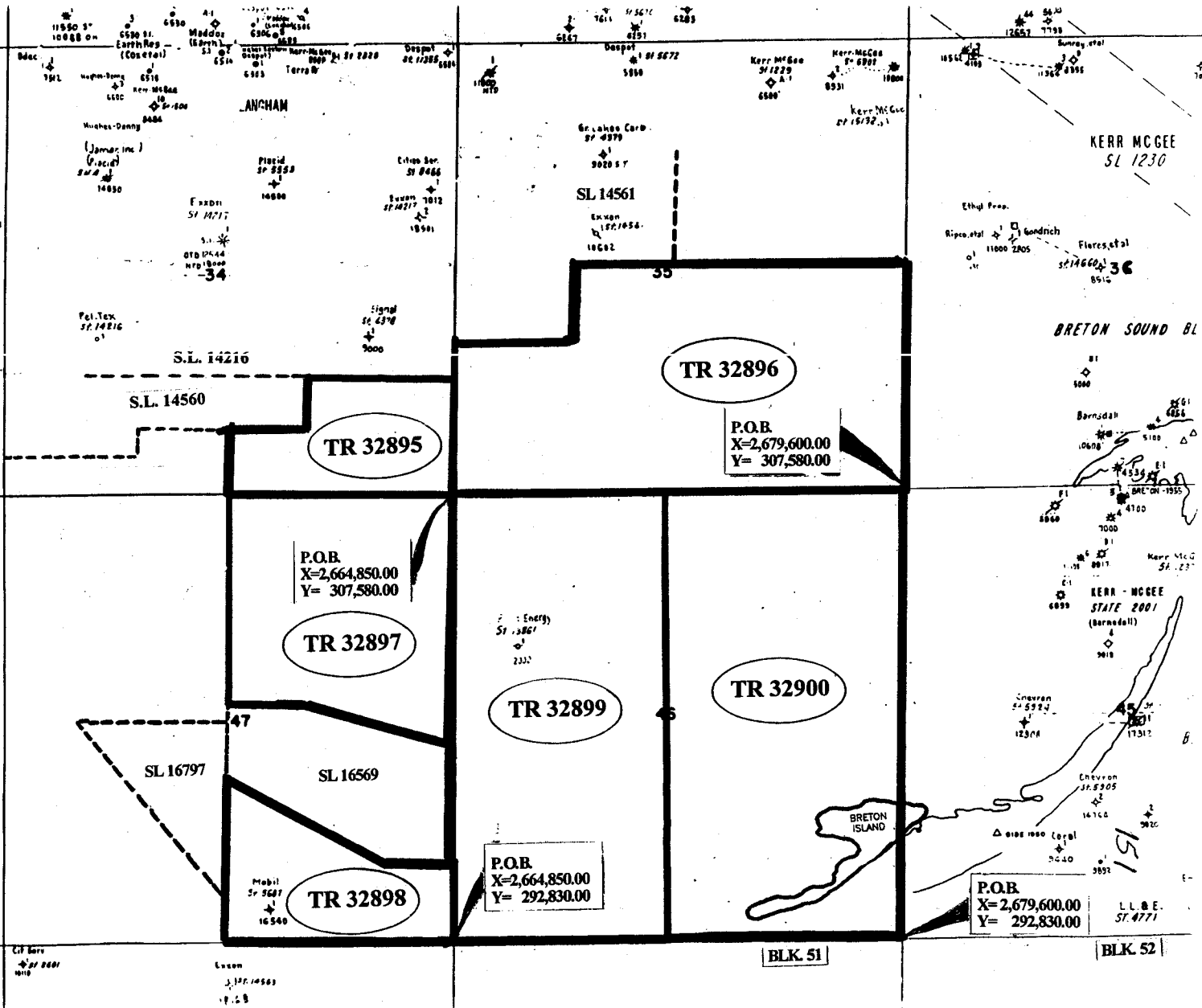
MAP NOT TO SCALE

F & A Map Services  
Division of PI

48

BRETON SOUND AREA  
PLAQUEMINES PARISH

KERR MCGEE  
ST. 8671



KERR MCGEE  
SL 1230

BRETON SOUND BL

KERR MCGEE  
STATE 2001  
(Barnedell)

BLK. 51

BLK. 52

P.O.B.  
X=2,679,600.00  
Y=292,830.00

P.O.B.  
X=2,664,850.00  
Y=292,830.00

P.O.B.  
X=2,664,850.00  
Y=307,580.00

TR 32900

TR 32899

TR 32897

TR 32895

TR 32896

S.L. 14216

S.L. 14560

SL 16797

SL 16569

TR 32898

Lucas  
ST. 14563

C.P. Barr  
ST. 8681

Kerr McGee

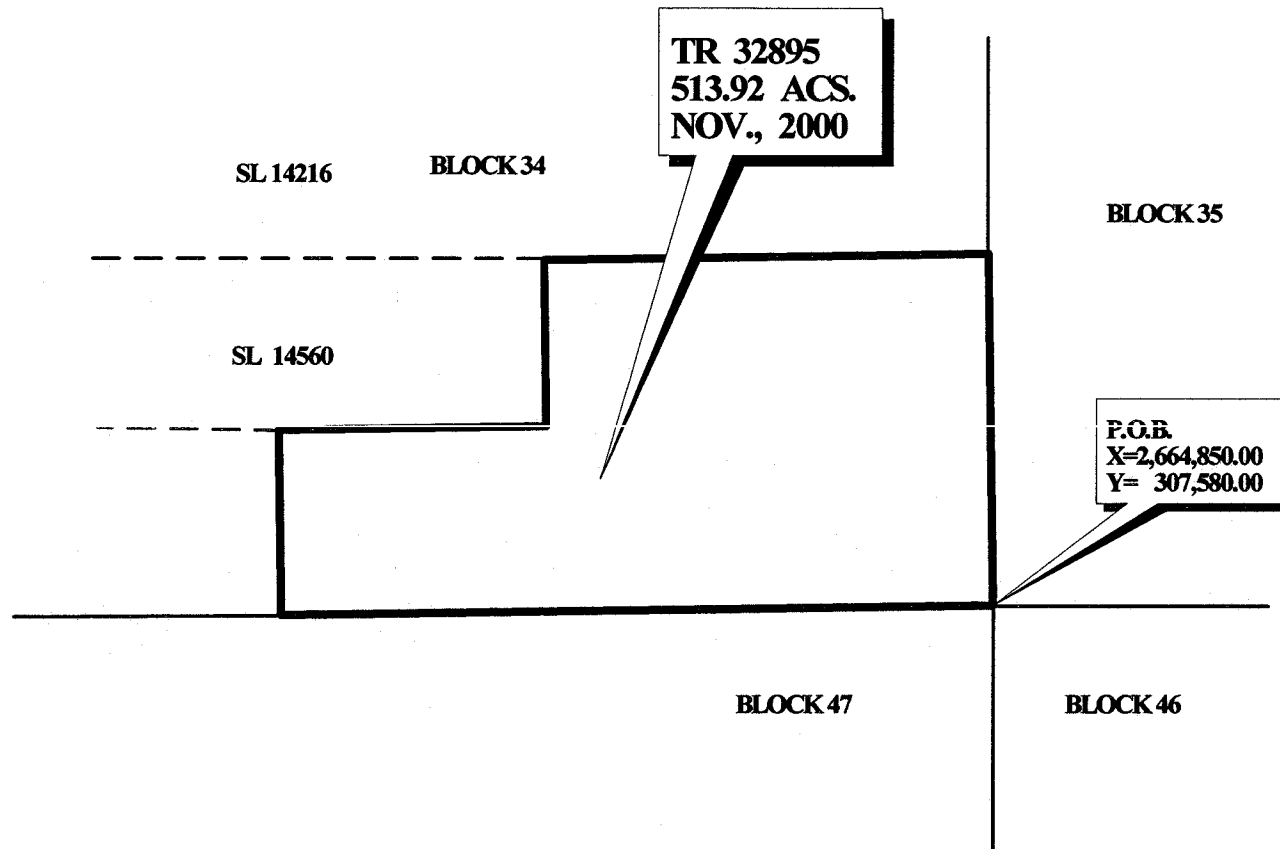
**TRACT 32895 - PORTION OF BLOCK 34, BRETON SOUND AREA, Plaquemines Parish, Louisiana**

All of the lands now or formerly constituting the beds and bottoms of all water bodies of every nature and description and all islands and other lands formed by accretion or reliction, except tax lands, belonging to the State of Louisiana and not under mineral lease on November 8, 2000, situated in Plaquemines Parish, Louisiana, and more particularly described as follows: Beginning at the Southeast corner of Block 34, Breton Sound Area, having Coordinates of X = 2,664,850.00 and Y = 307,580.00; thence West 7,375.00 feet along the South line of said Block 34 to a point having Coordinates of X = 2,657,475.00 and Y = 307,580.00; thence North 1,944.15 feet to a point on the South line of State Lease No. 14560 having Coordinates of X = 2,657,475.00 and Y = 309,524.15; thence East 2,753.55 feet along the South boundary of said State Lease No. 14560 to its Southeast corner having Coordinates of X = 2,660,233.55 and Y = 309,524.15; thence North 1,743.35 feet along the East boundary of said State Lease No. 14560 to its Northeast corner which lies on the South line of State Lease No. 14216 having Coordinates of X = 2,660,233.55 and Y = 311,267.50; thence East 4,616.45 feet along the South boundary of said State Lease No. 14216 to its Southeast corner which lies on the East line of said Block 34 having Coordinates of X = 2,664,850.00 and Y = 311,267.50; thence South 3,687.50 feet along said East line of said Block 34 to the point of beginning, containing approximately **513.92 acres**, as shown outlined in red on a plat on file in the Office of Mineral Resources, Department of Natural Resources. All bearings, distances and coordinates are based on Louisiana Coordinate System of 1927 (South Zone).

NOTE: The State of Louisiana does hereby reserve, and this lease shall be subject to, the imprescriptible right of surface use in the nature of a servitude in favor of the Department of Natural Resources, including its Offices and Commissions, for the sole purpose of implementing, constructing, servicing and maintaining approved coastal zone management and/or restoration projects. Utilization of any and all rights derived under this lease by the mineral lessee, its agents, successors or assigns, shall not interfere with nor hinder the reasonable surface use by the Department of Natural Resources, its Offices or Commissions, as hereinabove reserved.

Applicant: Robert A. Schroeder, Inc.

| Bidder | Cash Payment | Price / Acre | Rental | Oil | Gas | Other |
|--------|--------------|--------------|--------|-----|-----|-------|
|        |              |              |        |     |     |       |
|        |              |              |        |     |     |       |
|        |              |              |        |     |     |       |
|        |              |              |        |     |     |       |



**BRETON SOUND AREA**  
**PLAQUEMINES PARISH**

OFFICIAL COPY  
OFFICE OF MINERAL RESOURCES  
DEPT. OF NATURAL RESOURCES  
DO NOT REMOVE



**TRACT 32896 - PORTION OF BLOCK 35, BRETON SOUND AREA, Plaquemines Parish, Louisiana**

All of the lands now or formerly constituting the beds and bottoms of all water bodies of every nature and description and all islands and other lands formed by accretion or reliction, except tax lands, belonging to the State of Louisiana and not under mineral lease on November 8, 2000, situated in Plaquemines Parish, Louisiana, and more particularly described as follows: Beginning at the Southeast corner of Block 35, Breton Sound Area, having Coordinates of X = 2,679,600.00 and Y = 307,580.00; thence West 14,750.00 feet along the South line of said Block 35 to its Southwest corner having Coordinates of X = 2,664,850.00 and Y = 307,580.00; thence North 4,875.00 feet along the West line of said Block 35 to the Southwest corner of State Lease No. 14561, as amended, having Coordinates of X = 2,664,850.00 and Y = 312,455.00; thence along the boundaries of said State Lease No. 14561 the following courses: East 3,999.40 feet to a point having Coordinates of X = 2,668,849.40 and Y = 312,455.00; North 2,500.00 feet to a point having Coordinates of X = 2,668,849.40 and Y = 314,955.00; and East 3,250.60 feet to its most East Southeast corner having Coordinates of X = 2,672,100.00 and Y = 314,955.00; thence East 7,500.00 feet to a point on the East line of said Block 35 having Coordinates of X = 2,679,600.00 and Y = 314,955.00; thence South 7,375.00 feet along said East line of said Block 35 to the point of beginning, containing approximately **2,267.74 acres**, as shown outlined in red on a plat on file in the Office of Mineral Resources, Department of Natural Resources. All bearings, distances and coordinates are based on Louisiana Coordinate System of 1927 (South Zone).

NOTE: It appears, according to our records, that a portion of this tract is located within the restrictive safety fairway area as set out by the Corps of Engineers, U.S. Army.

NOTE: The State of Louisiana does hereby reserve, and this lease shall be subject to, the imprescriptible right of surface use in the nature of a servitude in favor of the Department of Natural Resources, including its Offices and Commissions, for the sole purpose of implementing, constructing, servicing and maintaining approved coastal zone management and/or restoration projects. Utilization of any and all rights derived under this lease by the mineral lessee, its agents, successors or assigns, shall not interfere with nor hinder the reasonable surface use by the Department of Natural Resources, its Offices or Commissions, as hereinabove reserved.

Applicant: Robert A. Schroeder, Inc.

| Bidder | Cash Payment | Price / Acre | Rental | Oil | Gas | Other |
|--------|--------------|--------------|--------|-----|-----|-------|
|        |              |              |        |     |     |       |
|        |              |              |        |     |     |       |
|        |              |              |        |     |     |       |
|        |              |              |        |     |     |       |



SL 14561

BLOCK 35

TR 32896  
2,267.74 +/- ACS.  
NOV., 2000

BLOCK 34

P.O.B.  
X=2,679,600.00  
Y= 307,580.00

BLOCK 36

BLOCK 47

BLOCK 46

BLOCK 45

BRETON SOUND AREA  
PLAQUEMINES PARISH

OFFICIAL COPY  
OFFICE OF MINERAL RESOURCES  
DEPT. OF NATURAL RESOURCES  
DO NOT REMOVE



**TRACT 32897 - PORTION OF BLOCK 47, BRETON SOUND AREA, Plaquemines Parish, Louisiana**

All of the lands now or formerly constituting the beds and bottoms of all water bodies of every nature and description and all islands and other lands formed by accretion or reliction, except tax lands, belonging to the State of Louisiana and not under mineral lease on November 8, 2000, situated in Plaquemines Parish, Louisiana, and more particularly described as follows: Beginning at the Northeast corner of Block 47, Breton Sound Area, having Coordinates of X = 2,664,850.00 and Y = 307,580.00; thence South 8,300.00 feet along the East line of said Block 47 to the Northeast corner of State Lease No. 16569 having Coordinates of X = 2,664,850.00 and Y = 299,280.00; thence along the North boundary of said State Lease No. 16569 the following courses: North 75 degrees 24 minutes 12 seconds West 4,960.09 feet to a point having Coordinates of X = 2,660,050.00 and Y = 300,530.00 and West 2,575.00 feet to its Northwest corner having Coordinates of X = 2,657,475.00 and Y = 300,530.00; thence North 7,050.00 feet to a point on the North line of said Block 47 having Coordinates of X = 2,657,475.00 and Y = 307,580.00; thence East 7,375.00 feet along said North line of said Block 47 to the point of beginning, containing approximately 1,262.48 acres, as shown outlined in red on a plat on file in the Office of Mineral Resources, Department of Natural Resources. All bearings, distances and coordinates are based on Louisiana Coordinate System of 1927 (South Zone).

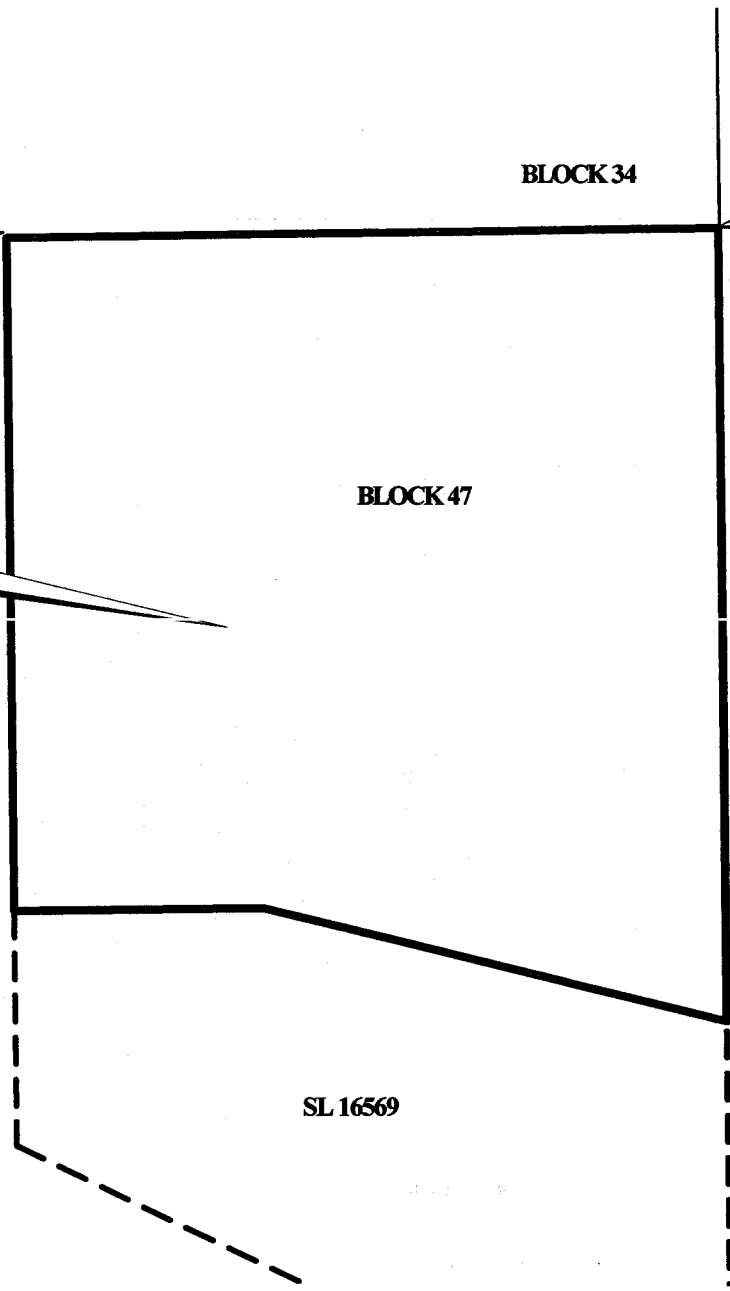
NOTE: The State of Louisiana does hereby reserve, and this lease shall be subject to, the imprescriptible right of surface use in the nature of a servitude in favor of the Department of Natural Resources, including its Offices and Commissions, for the sole purpose of implementing, constructing, servicing and maintaining approved coastal zone management and/or restoration projects. Utilization of any and all rights derived under this lease by the mineral lessee, its agents, successors or assigns, shall not interfere with nor hinder the reasonable surface use by the Department of Natural Resources, its Offices or Commissions, as hereinabove reserved.

Applicant: Robert A. Schroeder, Inc.

| Bidder | Cash Payment | Price / Acre | Rental | Oil | Gas | Other |
|--------|--------------|--------------|--------|-----|-----|-------|
|        |              |              |        |     |     |       |
|        |              |              |        |     |     |       |
|        |              |              |        |     |     |       |
|        |              |              |        |     |     |       |

**BRETON SOUND AREA  
PLAQUEMINES PARISH**

**TR 32897  
1,262.48 +/- ACS.  
NOV., 2000**



BLOCK 34

BLOCK 35

BLOCK 46

BLOCK 47

SL 16569

P.O.B.  
X=2,664,850.00  
Y= 307,580.00



OFFICIAL COPY  
OFFICE OF MINERAL RESOURCES  
DEPT. OF NATURAL RESOURCES  
DO NOT REMOVE

2000 0 2000 Feet

**TRACT 32898 - PORTION OF BLOCK 47, BRETON SOUND AREA, Plaquemines Parish, Louisiana**

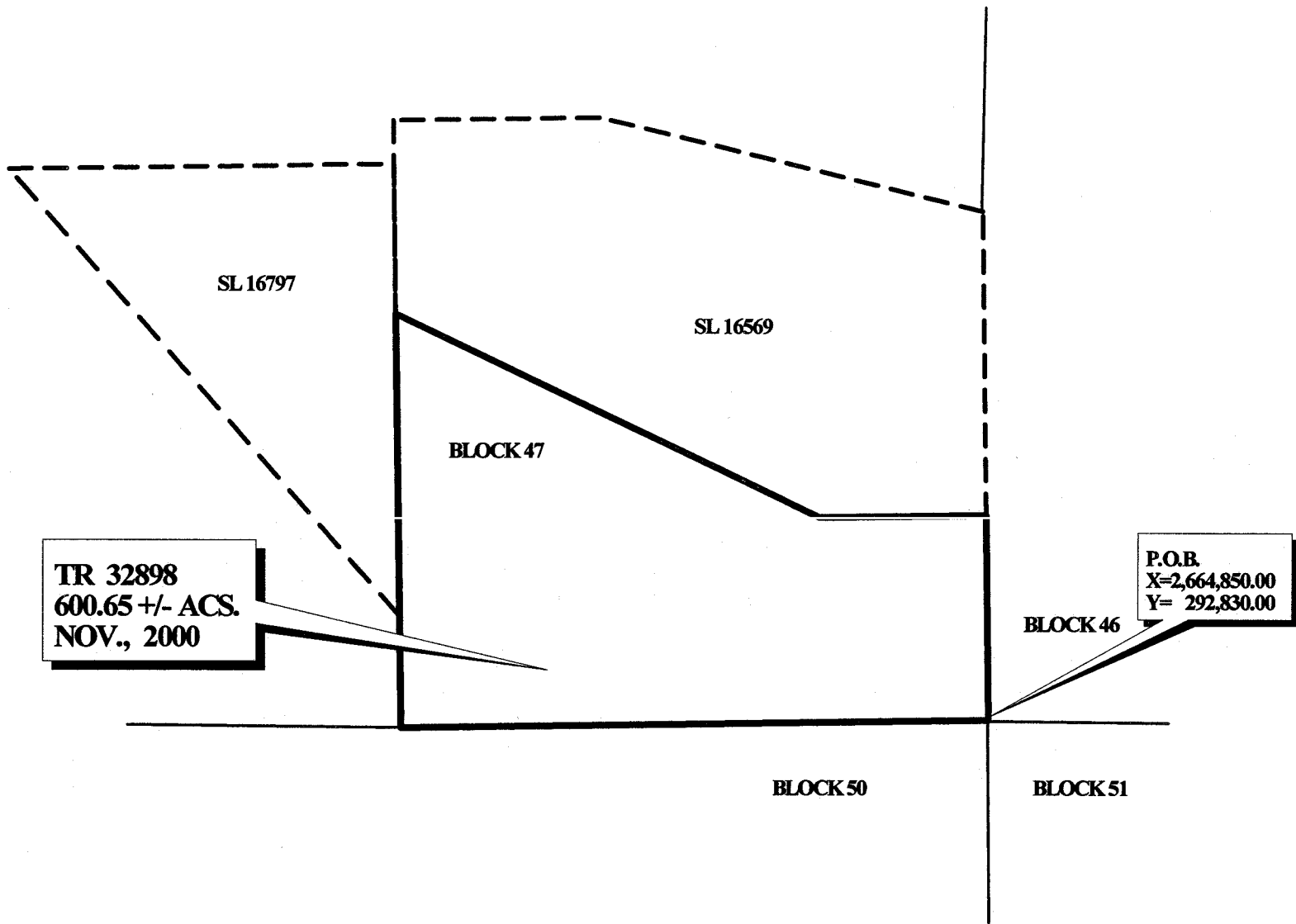
All of the lands now or formerly constituting the beds and bottoms of all water bodies of every nature and description and all islands and other lands formed by accretion or reliction, except tax lands, belonging to the State of Louisiana and not under mineral lease on November 8, 2000, situated in Plaquemines Parish, Louisiana, and more particularly described as follows: Beginning at the Southeast corner of Block 47, Breton Sound Area, having Coordinates of X = 2,664,850.00 and Y = 292,830.00; thence West 7,375.00 feet along the South line of said Block 47 to a point having Coordinates of X = 2,657,475.00 and Y = 292,830.00; thence North 1,415.00 feet to the South corner of State Lease No. 16797 having Coordinates of X = 2,657,475.00 and Y = 294,245.00; thence North 3,835.00 feet along the East boundary of said State Lease No. 16797 to the Southwest corner of State Lease No. 16569 having Coordinates of X = 2,657,475.00 and Y = 298,080.00; thence along the South boundary of said State Lease No. 16569 the following courses: South 63 degrees 19 minutes 35 seconds East 5,903.23 feet to a point having Coordinates of X = 2,662,750.00 and Y = 295,430.00 and East 2,100.00 feet to its Southeast corner located on the East line of said Block 47 having Coordinates of X = 2,664,850.00 and Y = 295,430.00; thence South 2,600.00 feet along said East line of said Block 47 to the point of beginning, containing approximately **600.65 acres**, as shown outlined in red on a plat on file in the Office of Mineral Resources, Department of Natural Resources. All bearings, distances and coordinates are based on Louisiana Coordinate System of 1927 (South Zone).

NOTE: The State of Louisiana does hereby reserve, and this lease shall be subject to, the imprescriptible right of surface use in the nature of a servitude in favor of the Department of Natural Resources, including its Offices and Commissions, for the sole purpose of implementing, constructing, servicing and maintaining approved coastal zone management and/or restoration projects. Utilization of any and all rights derived under this lease by the mineral lessee, its agents, successors or assigns, shall not interfere with nor hinder the reasonable surface use by the Department of Natural Resources, its Offices or Commissions, as hereinabove reserved.

Applicant: Robert A. Schroeder, Inc.

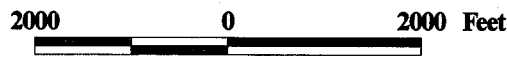
| Bidder | Cash Payment | Price / Acre | Rental | Oil | Gas | Other |
|--------|--------------|--------------|--------|-----|-----|-------|
|        |              |              |        |     |     |       |
|        |              |              |        |     |     |       |
|        |              |              |        |     |     |       |
|        |              |              |        |     |     |       |





**BRETON SOUND AREA  
PLAQUEMINES PARISH**

OFFICIAL COPY  
OFFICE OF MINERAL RESOURCES  
DEPT. OF NATURAL RESOURCES  
DO NOT REMOVE



**TRACT 32899 - PORTION OF BLOCK 46, BRETON SOUND AREA, Plaquemines Parish, Louisiana**

All of the lands now or formerly constituting the beds and bottoms of all water bodies of every nature and description and all islands and other lands formed by accretion or reliction, except tax lands, belonging to the State of Louisiana and not under mineral lease on November 8, 2000, situated in Plaquemines Parish, Louisiana, and more particularly described as follows: Beginning at the Northwest corner of Block 46, Breton Sound Area, having Coordinates of X = 2,664,850.00 and Y = 307,580.00; thence South 14,750.00 feet on the West line of said Block 46 to its Southwest corner having Coordinates of X = 2,664,850.00 and Y = 292,830.00; thence East 7,375.00 feet on the South line of said Block 46 to a point having Coordinates of X = 2,672,225.00 and Y = 292,830.00; thence North 14,750.00 feet to a point on the North line of said Block 46 having Coordinates of X = 2,672,225.00 and Y = 307,580.00; thence West 7,375.00 feet on said North line of said Block 46 to the point of beginning, containing approximately 2,497.27 acres, as shown outlined in red on a plat on file in the Office of Mineral Resources, Department of Natural Resources. All bearings, distances and coordinates are based on Louisiana Coordinate System of 1927 (South Zone).

NOTE: The State of Louisiana does hereby reserve, and this lease shall be subject to, the imprescriptible right of surface use in the nature of a servitude in favor of the Department of Natural Resources, including its Offices and Commissions, for the sole purpose of implementing, constructing, servicing and maintaining approved coastal zone management and/or restoration projects. Utilization of any and all rights derived under this lease by the mineral lessee, its agents, successors or assigns, shall not interfere with nor hinder the reasonable surface use by the Department of Natural Resources, its Offices or Commissions, as hereinabove reserved.

Applicant: Robert A. Schroeder, Inc.

| Bidder | Cash Payment | Price / Acre | Rental | Oil | Gas | Other |
|--------|--------------|--------------|--------|-----|-----|-------|
|        |              |              |        |     |     |       |
|        |              |              |        |     |     |       |
|        |              |              |        |     |     |       |
|        |              |              |        |     |     |       |

161

BLK. 34

BLK. 35



BLK. 47

P.O.B.  
X=2,664,850.00  
Y= 307,580.00

TR 32899  
2,497.27 +/- ACS.  
NOV., 2000

BLK. 46

OFFICIAL COPY  
OFFICE OF MINERAL RESOURCES  
DEPT. OF NATURAL RESOURCES  
DO NOT REMOVE

SL 16569

BLK. 50

BLK. 51

BRETON SOUND AREA  
PLAQUEMINES PARISH

