

NOT TO BE USED WITH A PORTION BID
FOR INFORMATIONAL PURPOSES ONLY!

CHEVRON
(GULF)
ST 192 PP

MAP NOT TO SCALE

P.O.B.
X=2,625,907.79
Y= 194,004.96

TR 32886

TR 32887

P.O.B.
X=2,628,706.10
Y= 188,807.15

TR 32888

S.L. 15957

Plaquemines Parish

F & A Map Services
Division of P1

TORCH
(TEX. GEN. PET.)
ST. 100.90

BLK 27 FIELD

HEVRON
ST. 2008

25

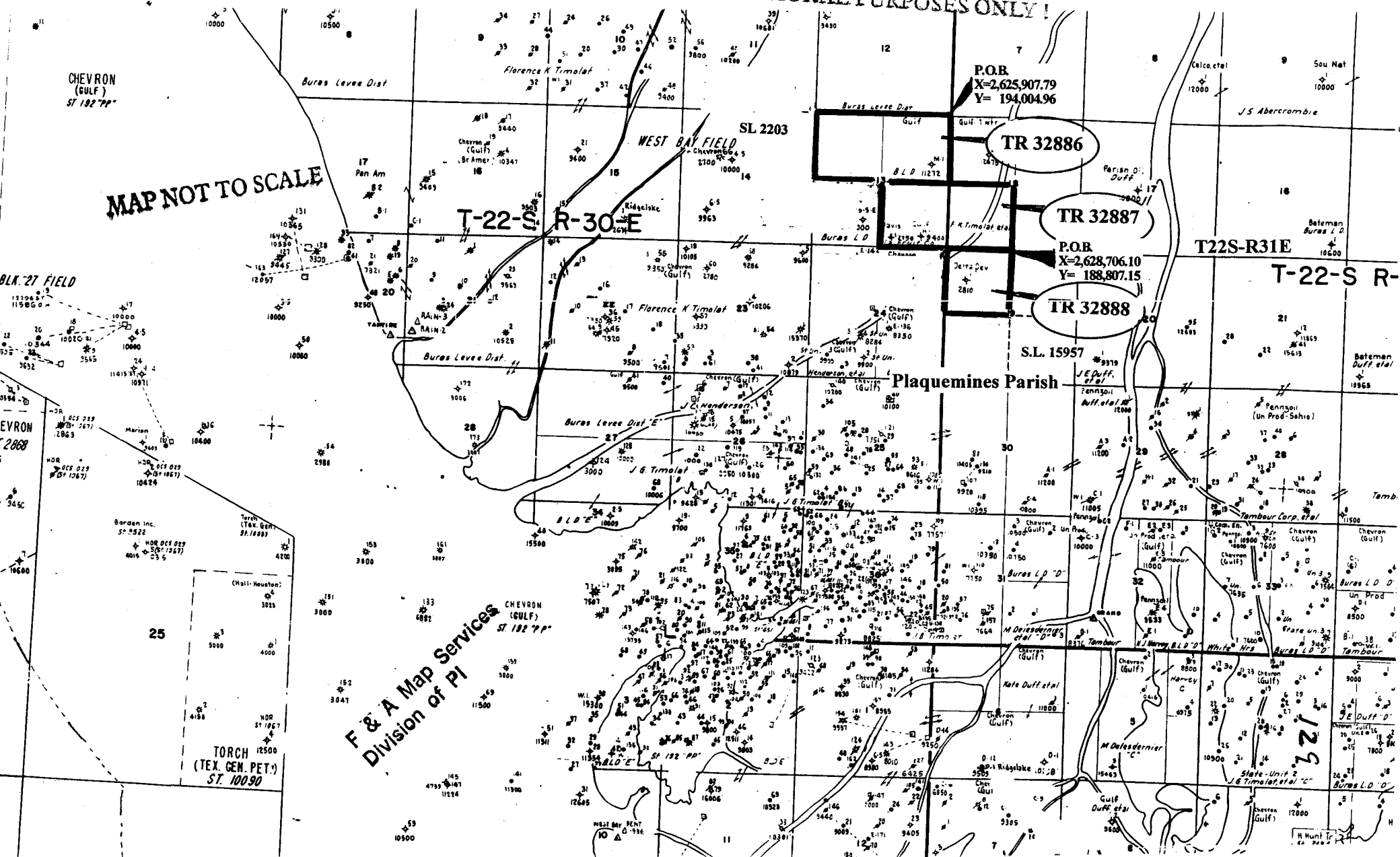
SL 2203

T22S-R31E

T-22-S R-

T-22-S R-

129



TRACT 32886 - Plaquemines Parish, Louisiana

All of the lands now or formerly constituting the beds and bottoms of all water bodies of every nature and description and all islands and other lands formed by accretion or reliction, except tax lands, owned by and not under mineral lease from the State of Louisiana on November 8, 2000, situated in Plaquemines Parish, Louisiana, within the following described boundaries: Beginning at a point having Coordinates of X = 2,625,907.79 and Y = 194,004.96; thence South 01 degrees 43 minutes 52 seconds East 2,640.00 feet to a point having Coordinates of X = 2,625,987.54 and Y = 191,366.17; thence Westerly approximately 2,640 feet to a Northeast corner of State Lease No. 2203, as amended; thence on the Eastern boundary of said State Lease No. 2203 the following courses: Westerly approximately 2,640 feet and Northerly approximately 2,640 feet to its Northernmost Northeast corner; thence Easterly approximately 5,280 feet to the point of beginning, containing approximately **257 acres**, as shown outlined in red on a plat on file in the Office of Mineral Resources, Department of Natural Resources. All bearings, distances and coordinates are based on Louisiana Coordinate System of 1927 (South Zone).

NOTE: The State of Louisiana does hereby reserve, and this lease shall be subject to, the imprescriptible right of surface use in the nature of a servitude in favor of the Department of Natural Resources, including its Offices and Commissions, for the sole purpose of implementing, constructing, servicing and maintaining approved coastal zone management and/or restoration projects. Utilization of any and all rights derived under this lease by the mineral lessee, its agents, successors or assigns, shall not interfere with nor hinder the reasonable surface use by the Department of Natural Resources, its Offices or Commissions, as hereinabove reserved.

Applicant: Kare-Sue Energy, Inc.

Bidder	Cash Payment	Price / Acre	Rental	Oil	Gas	Other

TR 32886
257 +/- ACS.
NOV., 2000

P.O.B.
X=2,625,907.79
Y= 194,004.96

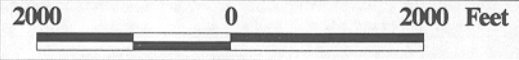
T 22 S - R 30 E

T 22 S - R 31 E



SL 2203

OFFICIAL COPY
OFFICE OF MINERAL RESOURCES
DEPT. OF NATURAL RESOURCES
DO NOT REMOVE



PLAQUEMINES PARISH

131

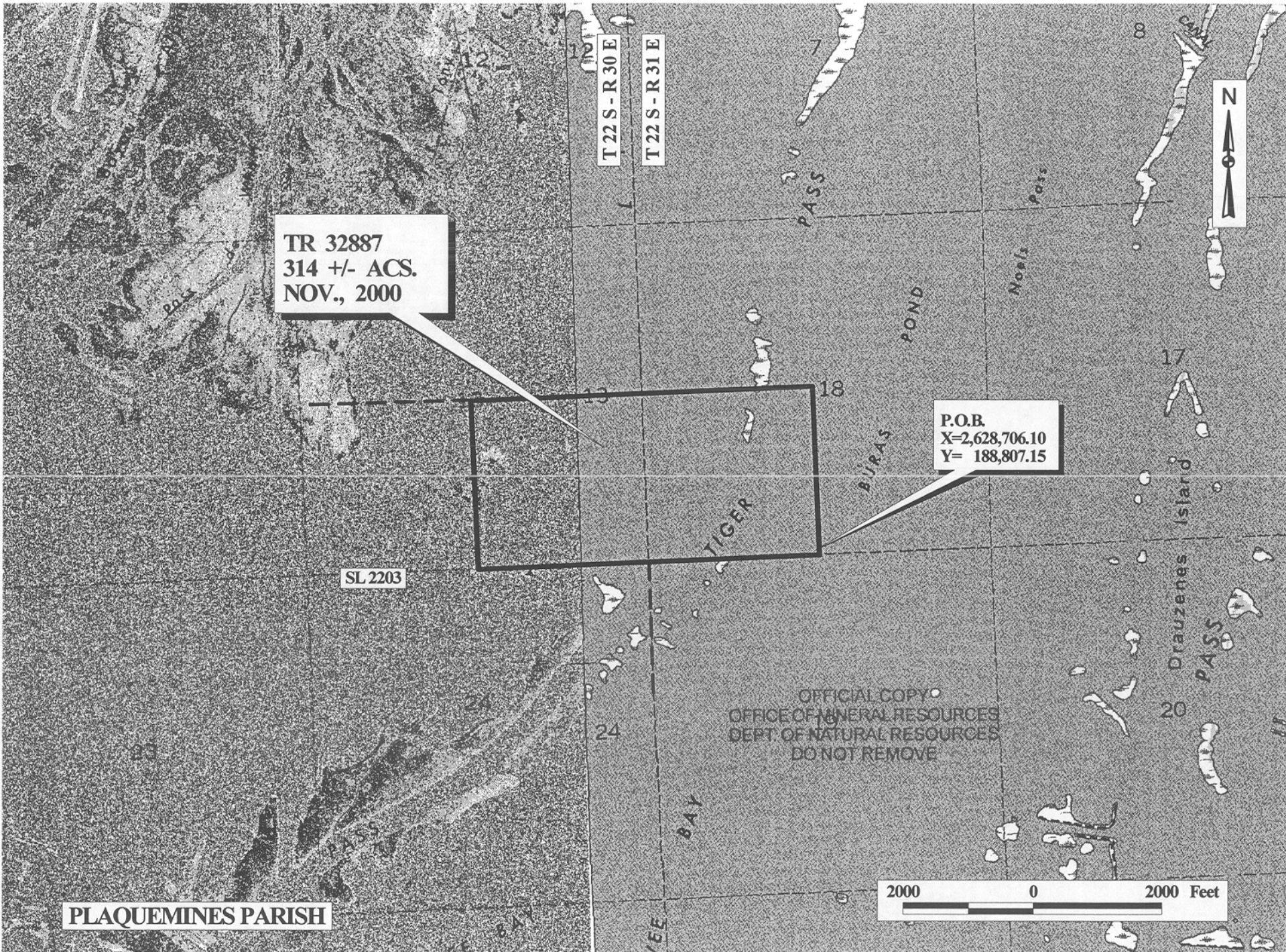
TRACT 32887 - Plaquemines Parish, Louisiana

All of the lands now or formerly constituting the beds and bottoms of all water bodies of every nature and description and all islands and other lands formed by accretion or reliction, except tax lands, owned by and not under mineral lease from the State of Louisiana on November 8, 2000, situated in Plaquemines Parish, Louisiana, within the following described boundaries: Beginning at a point having Coordinates of X = 2,628,706.10 and Y = 188,807.15; thence Westerly approximately 2,640 feet to a Northeast corner of State Lease No. 2203, as amended; thence on the Eastern boundary of said State Lease No. 2203 the following courses: Westerly approximately 2,640 feet and Northerly approximately 2,640 feet to a Northeast corner; thence Easterly approximately 5,280 feet to a point having Coordinates of X = 2,628,626.34 and Y = 191,445.92; thence South 01 degrees 43 minutes 53 seconds East 2,639.98 feet to the point of beginning, containing approximately **314 acres**, as shown outlined in red on a plat on file in the Office of Mineral Resources, Department of Natural Resources. All bearings, distances and coordinates are based on Louisiana Coordinate System of 1927 (South Zone).

NOTE: The State of Louisiana does hereby reserve, and this lease shall be subject to, the imprescriptible right of surface use in the nature of a servitude in favor of the Department of Natural Resources, including its Offices and Commissions, for the sole purpose of implementing, constructing, servicing and maintaining approved coastal zone management and/or restoration projects. Utilization of any and all rights derived under this lease by the mineral lessee, its agents, successors or assigns, shall not interfere with nor hinder the reasonable surface use by the Department of Natural Resources, its Offices or Commissions, as hereinabove reserved.

Applicant: Kare-Sue Energy, Inc.

Bidder	Cash Payment	Price / Acre	Rental	Oil	Gas	Other



TR 32887
314 +/- ACS.
NOV., 2000

P.O.B.
X=2,628,706.10
Y= 188,807.15

SL 2203

OFFICIAL COPY
OFFICE OF MINERAL RESOURCES
DEPT. OF NATURAL RESOURCES
DO NOT REMOVE

PLAQUEMINES PARISH

2000 0 2000 Feet



TRACT 32888 - Plaquemines Parish, Louisiana

All of the lands now or formerly constituting the beds and bottoms of all water bodies of every nature and description and all islands and other lands formed by accretion or reliction, except tax lands, owned by and not under mineral lease from the State of Louisiana on November 8, 2000, situated in Plaquemines Parish, Louisiana, within the following described boundaries: Beginning at a point having Coordinates of X = 2,628,706.10 and Y = 188,807.15; thence Southerly approximately 2,640 feet to the Southernmost Northeast corner of State Lease No. 2203, as amended, also being the Northwest corner of State Lease No. 15957; thence on the Eastern boundary of said State Lease No. 2203 the following courses: Westerly approximately 2,640 feet and Northerly approximately 2,640 feet to a Northeast corner; thence Easterly approximately 2,640 feet to the point of beginning, containing approximately **158 acres**, as shown outlined in red on a plat on file in the Office of Mineral Resources, Department of Natural Resources. All bearings, distances and coordinates are based on Louisiana Coordinate System of 1927 (South Zone).

NOTE: The State of Louisiana does hereby reserve, and this lease shall be subject to, the imprescriptible right of surface use in the nature of a servitude in favor of the Department of Natural Resources, including its Offices and Commissions, for the sole purpose of implementing, constructing, servicing and maintaining approved coastal zone management and/or restoration projects. Utilization of any and all rights derived under this lease by the mineral lessee, its agents, successors or assigns, shall not interfere with nor hinder the reasonable surface use by the Department of Natural Resources, its Offices or Commissions, as hereinabove reserved.

Applicant: Kare-Sue Energy, Inc.

Bidder	Cash Payment	Price / Acre	Rental	Oil	Gas	Other

T 22 S - R 30 E

T 22 S - R 31 E

TR 32888
158 +/- ACS.
NOV., 2000

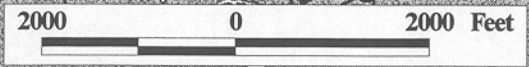
P.O.B.
X=2,628,706.10
Y= 188,807.15

SL 2203

SL 15957



OFFICIAL COPY
OFFICE OF MINERAL RESOURCES
DEPT. OF NATURAL RESOURCES
DO NOT REMOVE



PLAQUEMINES PARISH

