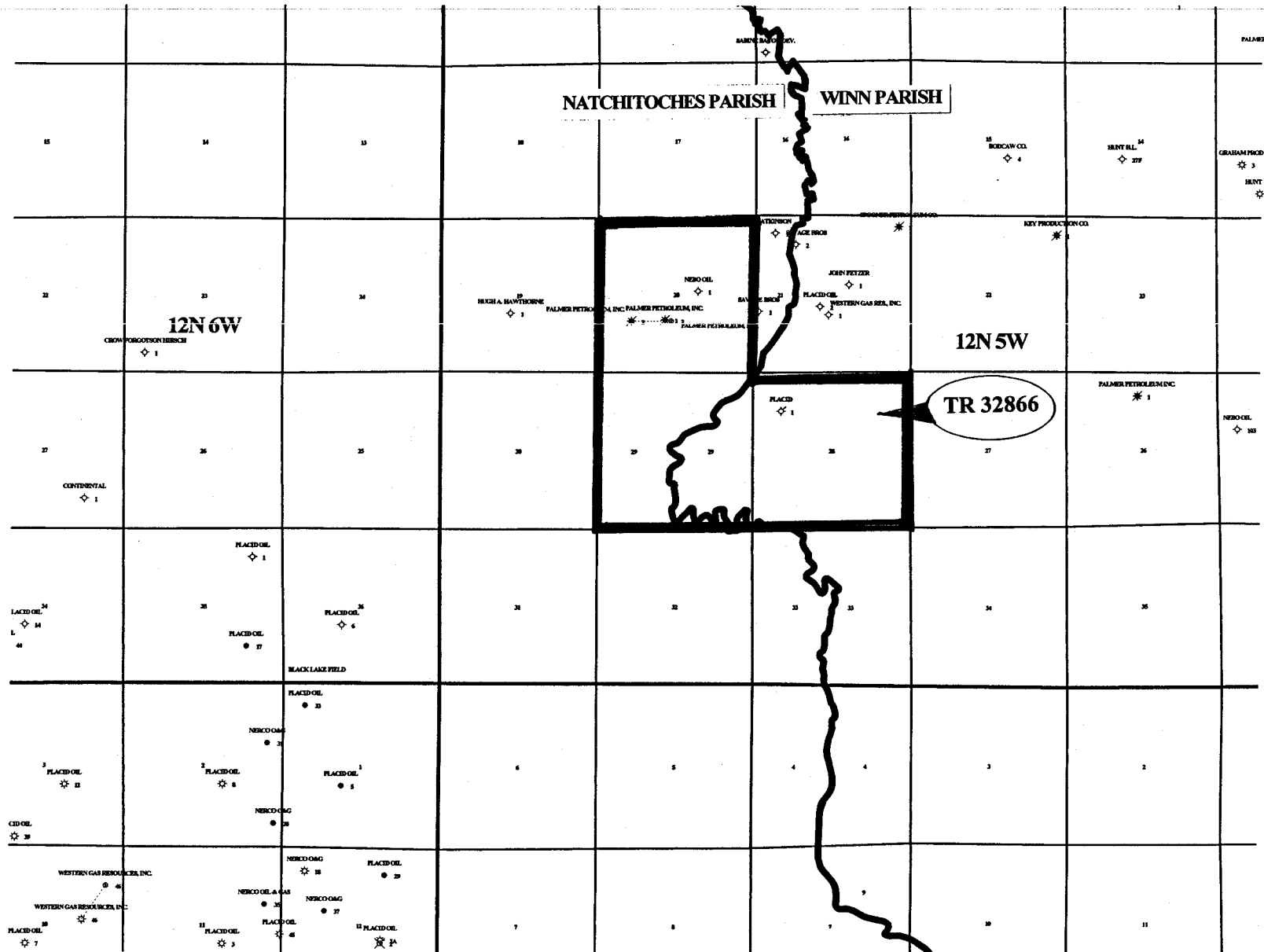


**INLAND
TRACTS**

MAP NOT TO SCALE

F & A Map Services
Division of PI

NOT TO BE USED WITH A PORTION BID
FOR INFORMATIONAL PURPOSES ONLY!



76

TRACT 32866 - Natchitoches and Winn Parishes, Louisiana

All of the lands now or formerly constituting the beds and bottoms of all water bodies of every nature and description and all islands and other lands formed by accretion or reliction, except tax lands, owned by and not under mineral lease from the State of Louisiana on November 8, 2000, situated in Natchitoches and Winn Parishes, Louisiana, within the following described boundaries: All of Sections 20, 28 and 29, Township 12 North, Range 5 West, containing approximately **24 acres**, as shown outlined in red on a plat on file in the Office of Mineral Resources, Department of Natural Resources.

NOTE: The above tract is located upon a restricted scenic river and all operations in this area must be conducted in strict conformity with the regulations of the Louisiana Department of Wildlife and Fisheries.

Applicant: Kenneth S. Hill Properties, Inc.

Bidder	Cash Payment	Price / Acre	Rental	Oil	Gas	Other

NATCHITOCHES PARISH

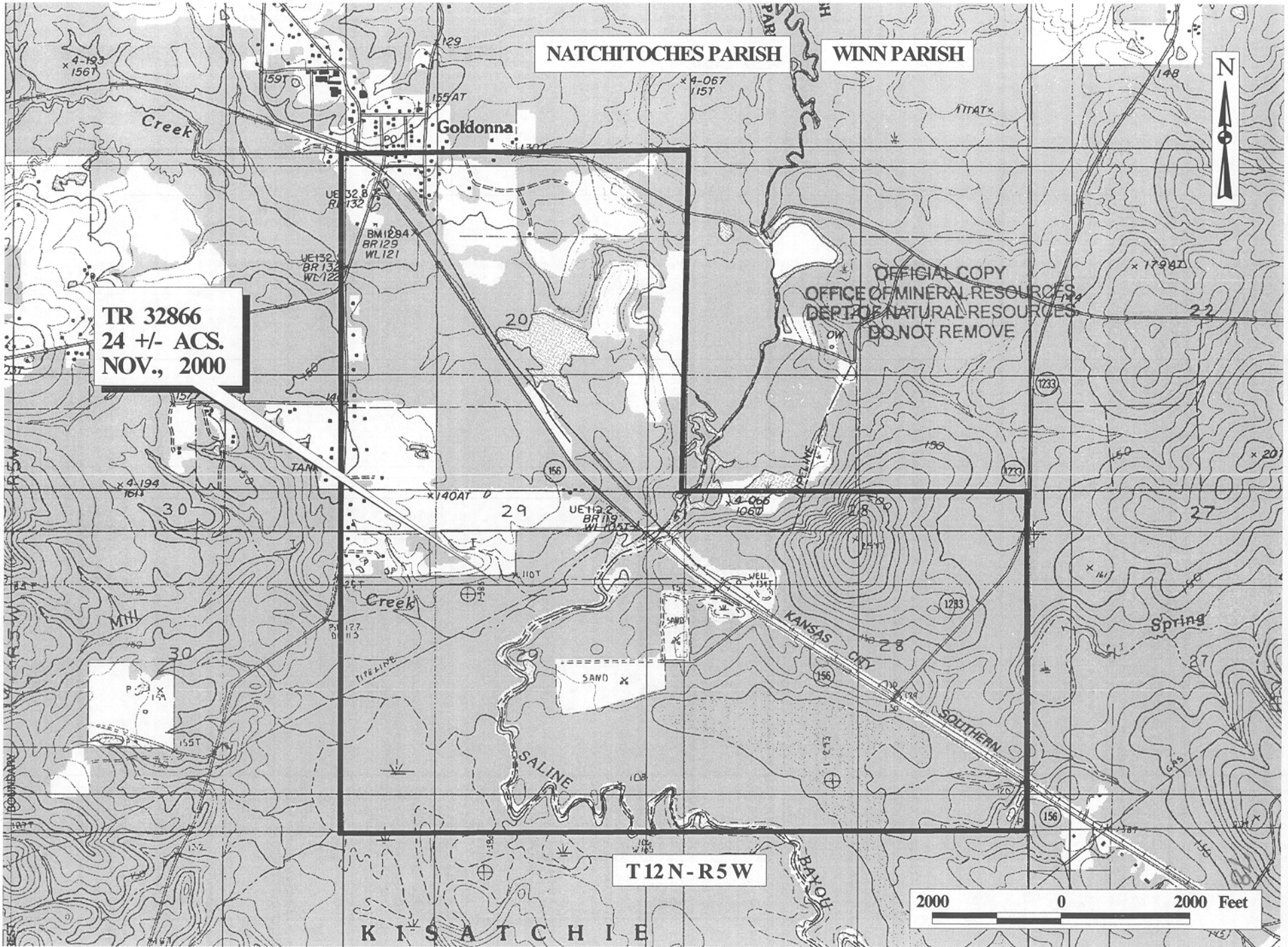
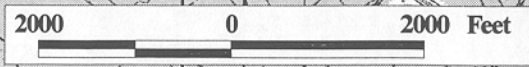
WINN PARISH



TR 32866
24 +/- ACS.
NOV., 2000

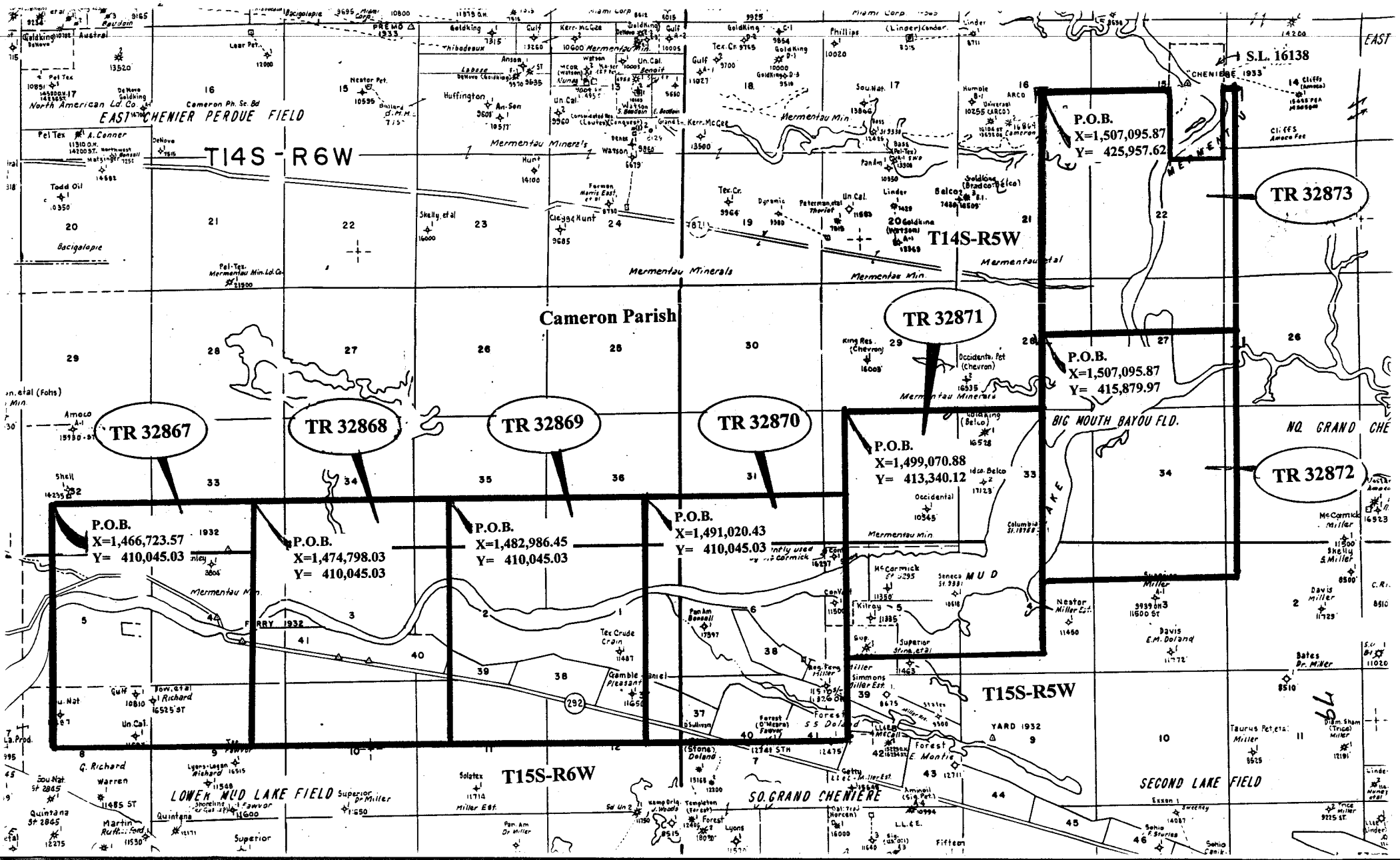
OFFICIAL COPY
OFFICE OF MINERAL RESOURCES
DEPT. OF NATURAL RESOURCES
DO NOT REMOVE

T12N-R5W



MAP NOT TO SCALE

NOT TO BE USED WITH A PORTION BID
FOR INFORMATIONAL PURPOSES ONLY!



TR 32867

TR 32868

TR 32869

TR 32870

TR 32871

TR 32873

TR 32872

P.O.B.
X=1,466,723.57
Y= 410,045.03

P.O.B.
X=1,474,798.03
Y= 410,045.03

P.O.B.
X=1,482,986.45
Y= 410,045.03

P.O.B.
X=1,491,020.43
Y= 410,045.03

P.O.B.
X=1,499,070.88
Y= 413,340.12

P.O.B.
X=1,507,095.87
Y= 415,879.97

P.O.B.
X=1,507,095.87
Y= 425,957.62

LOWER MUD LAKE FIELD

T15S-R6W

T15S-R5W

T14S-R5W

T14S-R6W

Cameron Parish

SECOND LAKE FIELD

S.O. GRAND CHERIERE

BIG MOUTH BAYOU FLD.

N.Q. GRAND CHE

S.L. 16138

EAST

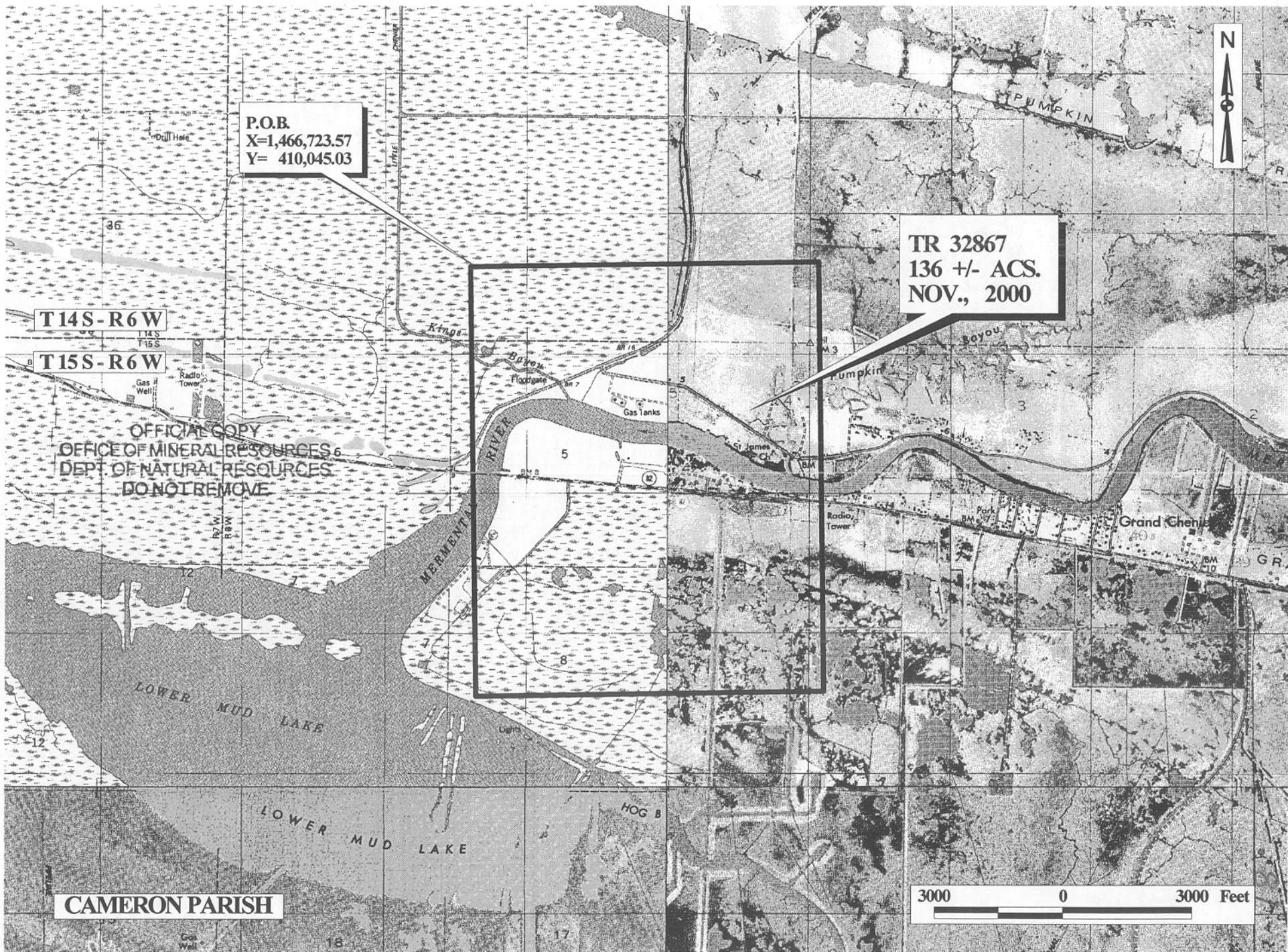
TRACT 32867 - Cameron Parish, Louisiana

All of the lands now or formerly constituting the beds and bottoms of all water bodies of every nature and description and all islands and other lands formed by accretion or reliction, except tax lands, owned by and not under mineral lease from the State of Louisiana on November 8, 2000, situated in Cameron Parish, Louisiana, within the following described boundaries: Beginning at a point having Coordinates of X = 1,466,723.57 and Y = 410,045.03; thence East 8,074.46 feet to a point having Coordinates of X = 1,474,798.03 and Y = 410,045.03; thence South 10,077.65 feet to a point having Coordinates of X = 1,474,798.03 and Y = 399,967.38; thence West 8,074.46 feet to a point having Coordinates of X = 1,466,723.57 and Y = 399,967.38; thence North 10,077.65 feet to the point of beginning, containing approximately **136 acres**, as shown outlined in red on a plat on file in the Office of Mineral Resources, Department of Natural Resources. All bearings, distances and coordinates are based on Louisiana Coordinate System of 1927 (South Zone).

NOTE: The State of Louisiana does hereby reserve, and this lease shall be subject to, the imprescriptible right of surface use in the nature of a servitude in favor of the Department of Natural Resources, including its Offices and Commissions, for the sole purpose of implementing, constructing, servicing and maintaining approved coastal zone management and/or restoration projects. Utilization of any and all rights derived under this lease by the mineral lessee, its agents, successors or assigns, shall not interfere with nor hinder the reasonable surface use by the Department of Natural Resources, its Offices or Commissions, as hereinabove reserved.

Applicant: Stephen M. Jenkins & Associates, Inc.

Bidder	Cash Payment	Price / Acre	Rental	Oil	Gas	Other



P.O.B.
X=1,466,723.57
Y= 410,045.03

TR 32867
136 +/- ACS.
NOV., 2000

T14S-R6W

T15S-R6W

OFFICIAL COPY
OFFICE OF MINERAL RESOURCES
DEPT. OF NATURAL RESOURCES
DO NOT REMOVE

CAMERON PARISH

3000 0 3000 Feet