

OFFSHORE

TRACTS

TRACT 32126 - BLOCK 1, SABINE PASS AREA, Cameron Parish, Louisiana

Block 1, Sabine Pass Area, Cameron Parish, Louisiana, belonging to the State of Louisiana and not under mineral lease on November 10, 1999, described as follows: Beginning at the Southeast corner of Block 1, Sabine Pass Area, having Coordinates of X = 1,214,355.14 and Y = 379,032.19; thence West 8,969.31 feet to the boundary between the State of Texas and Louisiana, as established by the Report of the Special Master to the United States Supreme Court in that matter styled Texas v. Louisiana No. 36 Original; thence Northwesterly along said boundary approximately 911 feet to a point having Coordinates of X = 1,205,204.82 and Y = 379,924.94; thence Northeasterly to a point having Coordinates of X = 1,205,843 and Y = 381,750; thence Northeasterly to a point having Coordinates of X = 1,206,440 and Y = 381,985; thence Northeasterly to a point having Coordinates of X = 1,212,770 and Y = 387,027; thence Southeasterly to a point having Coordinates of X = 1,213,168 and Y = 386,970; thence Northeasterly to a point on the East line of said Block 1 having Coordinates of X = 1,214,355.14 and Y = 387,597.29; thence South 8,565.10 feet to the point of beginning, containing approximately 1,156.55 acres, as shown outlined in red on a plat on file in the Office of Mineral Resources, Department of Natural Resources, **LESS AND EXCEPT** that portion thereof, if any, located West of the boundary line between the States of Texas and Louisiana as determined by the report of the Special Master in litigation in the Supreme Court of the United States styled Texas v. Louisiana et al No. 36 Original, or as otherwise approved by said court. All bearings, distances and coordinates are based on Louisiana Coordinate System of 1927 (South Zone).

NOTE: It appears according to our records that a portion of this tract is located within the restrictive safety fairway area as set out by the Corps of Engineers, U.S. Army.

NOTE: The State of Louisiana does hereby reserve, and this lease shall be subject to, the imprescriptible right of surface use in the nature of a servitude in favor of the Department of Natural Resources, including its Offices and Commissions, for the sole purpose of implementing, constructing, servicing and maintaining approved coastal zone management and/or restoration projects. Utilization of any and all rights derived under this lease by the mineral lessee, its agents, successors or assigns, shall not interfere with nor hinder the reasonable surface use by the Department of Natural Resources, its Offices or Commissions, as hereinabove reserved.

Applicant: Woodland Petroleum Corporation

Bidder	Cash Payment	Price / Acre	Rental	Oil	Gas	Other



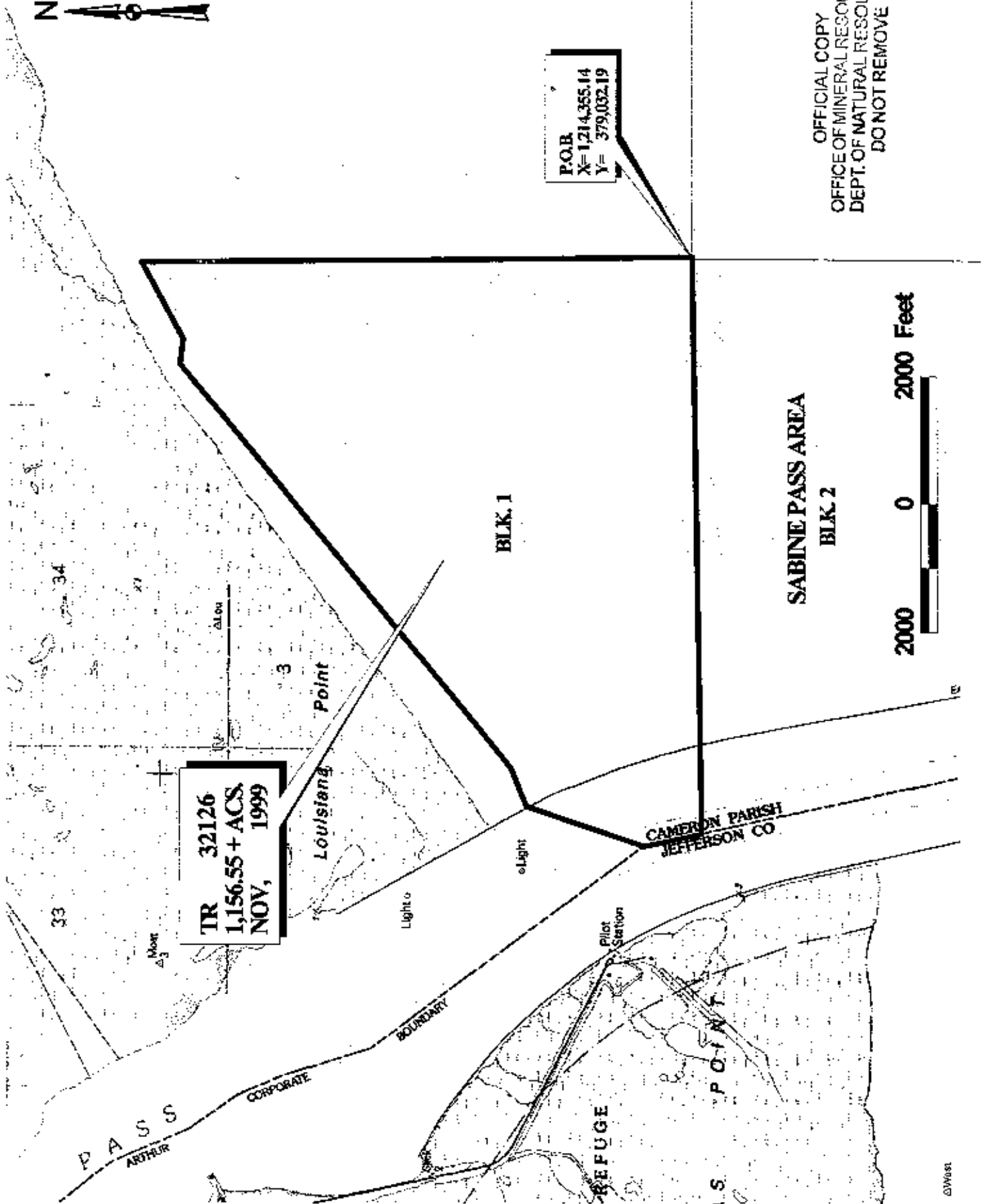
P.O.B.
X= 1214,355.14
Y= 379,032.19

OFFICIAL COPY
OFFICE OF MINERAL RESOURCES
DEPT. OF NATURAL RESOURCES
DO NOT REMOVE

TR 32126
1,156.55 + ACS
NOV, 1999

BLK. 1

SABINE PASS AREA
BLK. 2



West

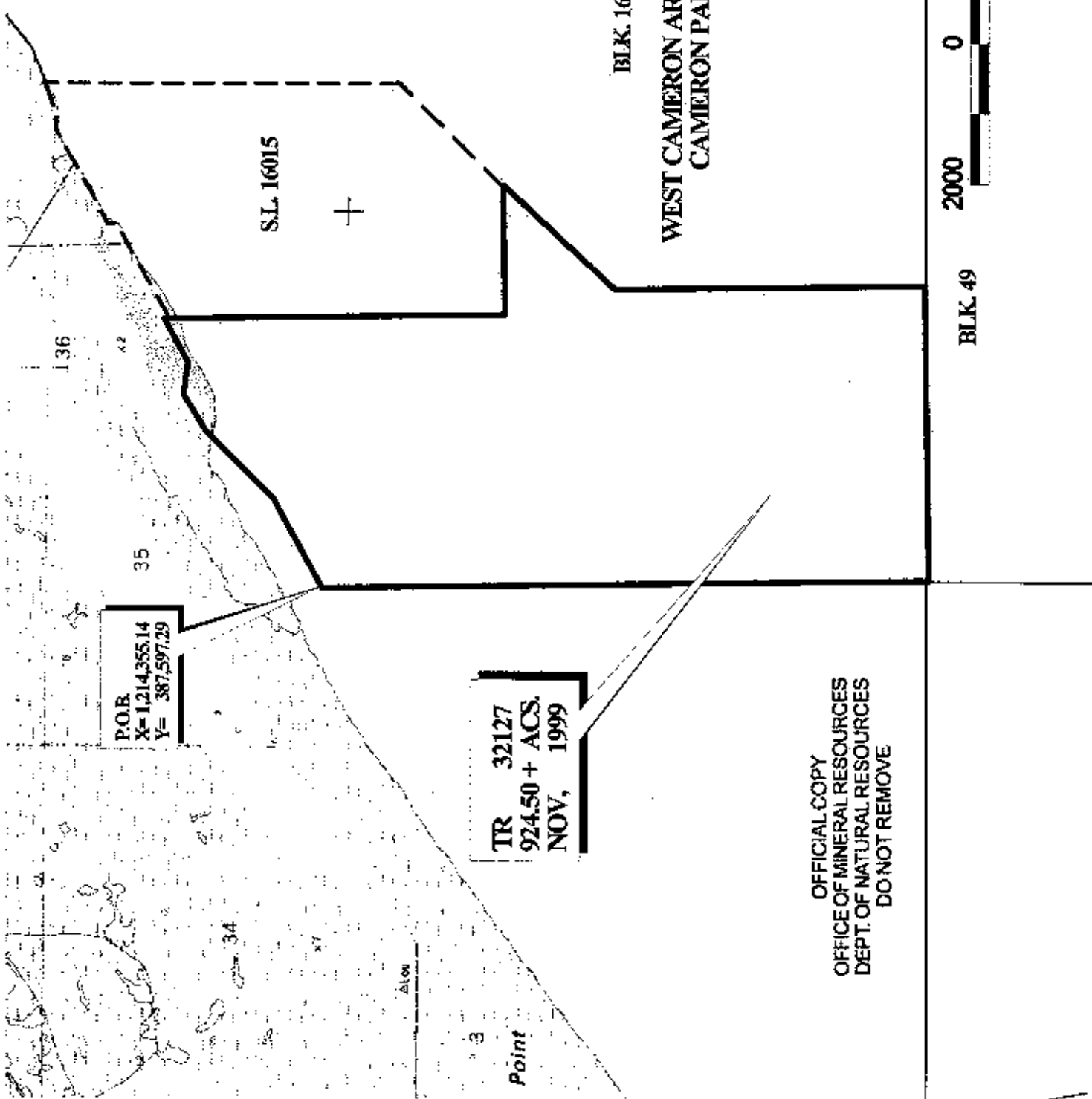
TRACT 32127 - PORTION OF BLOCK 16, WEST CAMERON AREA, REVISED, Cameron Parish, Louisiana

That portion of Block 16, West Cameron Area, Revised, Cameron Parish, Louisiana, belonging to the State of Louisiana and not under mineral lease on November 10, 1999, described as follows: Beginning at a point which is the Northwest corner of Block 16, West Cameron Area, Revised, having Coordinates of X = 1,214,355.14 and Y = 387,597.29; thence Northeasterly along the North line of said Block 16 to a point having Coordinates of X = 1,215,615 and Y = 388,263; thence Northeasterly along the North line of said Block 16 to a point having Coordinates of X = 1,216,582 and Y = 389,216; thence Northeasterly along the North line of said Block 16 to a point having Coordinates of X = 1,217,089 and Y = 389,513; thence Southeasterly along the North line of said Block 16 to a point having Coordinates of X = 1,217,536 and Y = 389,445; thence Northeasterly along the North line of said Block 16 to the Northwest corner of State Lease No. 16015 having Coordinates of X = 1,218,160.00 and Y = 389,764.14; thence South along the West line of said State Lease No. 16015 to its Southwest corner having Coordinates of X = 1,218,160.00 and Y = 384,960.00; thence East 1,819.16 feet along the South line of said State Lease No. 16015 to a point having Coordinates of X = 1,219,979.16 and Y = 384,960.00; thence Southwesterly on a straight line to a point having Coordinates of X = 1,218,500 and Y = 383,400.94; thence South 4,368.75 feet to a point on the South line of said Block 16 having Coordinates of X = 1,218,500.00 and Y = 379,032.19; thence West to the Southwest corner of said Block 16 having Coordinates of X = 1,214,355.14 and Y = 379,032.19; thence North along the West line of said Block 16 to the point of beginning, containing approximately 924.50 acres, as shown outlined in red on a plat on file in the Office of Mineral Resources, Department of Natural Resources. All bearings, distances and coordinates are based on Louisiana Coordinate System of 1927 (South Zone).

NOTE: The State of Louisiana does hereby reserve, and this lease shall be subject to, the imprescriptible right of surface use in the nature of a servitude in favor of the Department of Natural Resources, including its Offices and Commissions, for the sole purpose of implementing, constructing, servicing and maintaining approved coastal zone management and/or restoration projects. Utilization of any and all rights derived under this lease by the mineral lessee, its agents, successors or assigns, shall not interfere with nor hinder the reasonable surface use by the Department of Natural Resources, its Offices or Commissions, as hereinabove reserved.

Applicant: Woodland Petroleum Corporation

Bidder	Cash Payment	Price / Acre	Rental	Oil	Gas	Other



P.O.B.
X= 1,214,355.14
Y= 387,597.29

TR 32127
924.50 + ACS.
NOV, 1999

WEST CAMERON AREA, REVISED
CAMERON PARISH

BLK. 16

BLK. 49

2000 0 2000 Feet

OFFICIAL COPY
OFFICE OF MINERAL RESOURCES
DEPT. OF NATURAL RESOURCES
DO NOT REMOVE

Point

TRACT 32128 - PORTION OF BLOCK 16, WEST CAMERON AREA, REVISED, Cameron Parish, Louisiana

That portion of Block 16, West Cameron Area, Revised, Cameron Parish, Louisiana, belonging to the State of Louisiana and not under mineral lease on November 10, 1999, described as follows: Beginning at the Northeast corner of State Lease No. 16015, said point also being a point on the North line of Block 16, West Cameron Area, Revised, having Coordinates of X = 1,221,365.00 and Y = 391,510.32; thence Northeasterly along the North line of said Block 16 to a point having Coordinates of X = 1,225,421 and Y = 393,370; thence Southeasterly along the North line of said Block 16 to a point having Coordinates of X = 1,225,768 and Y = 393,281; thence Northeasterly along the North line of said Block 16 to a point having Coordinates of X = 1,226,444 and Y = 393,922; thence Northeasterly along the North line of said Block 16 to a point having Coordinates of X = 1,228,772 and Y = 394,775; thence Southeasterly along the North line of said Block 16 to a point having Coordinates of X = 1,228,846 and Y = 394,497; thence Northeasterly along the North line of said Block 16 to its Northeast corner having Coordinates of X = 1,229,113.18 and Y = 394,587.39; thence Southwesterly on a straight line to the most East Southeast corner of said State Lease No. 16015 having Coordinates of X = 1,221,365.00 and Y = 386,420.69; thence North 5,089.63 feet along the boundary of said State Lease No. 16015 to the point of beginning, containing approximately 488.07 acres, as shown outlined in red on a plat on file in the Office of Mineral Resources, Department of Natural Resources. All bearings, distances and Coordinates are based on Louisiana Coordinate System of 1927 (South Zone).

NOTE: The State of Louisiana does hereby reserve, and this lease shall be subject to, the imprescriptible right of surface use in the nature of a servitude in favor of the Department of Natural Resources, including its Offices and Commissions, for the sole purpose of implementing, constructing, servicing and maintaining approved coastal zone management and/or restoration projects. Utilization of any and all rights derived under this lease by the mineral lessee, its agents, successors or assigns, shall not interfere with nor hinder the reasonable surface use by the Department of Natural Resources, its Offices or Commissions, as hereinabove reserved.

Applicant: Woodland Petroleum Corporation

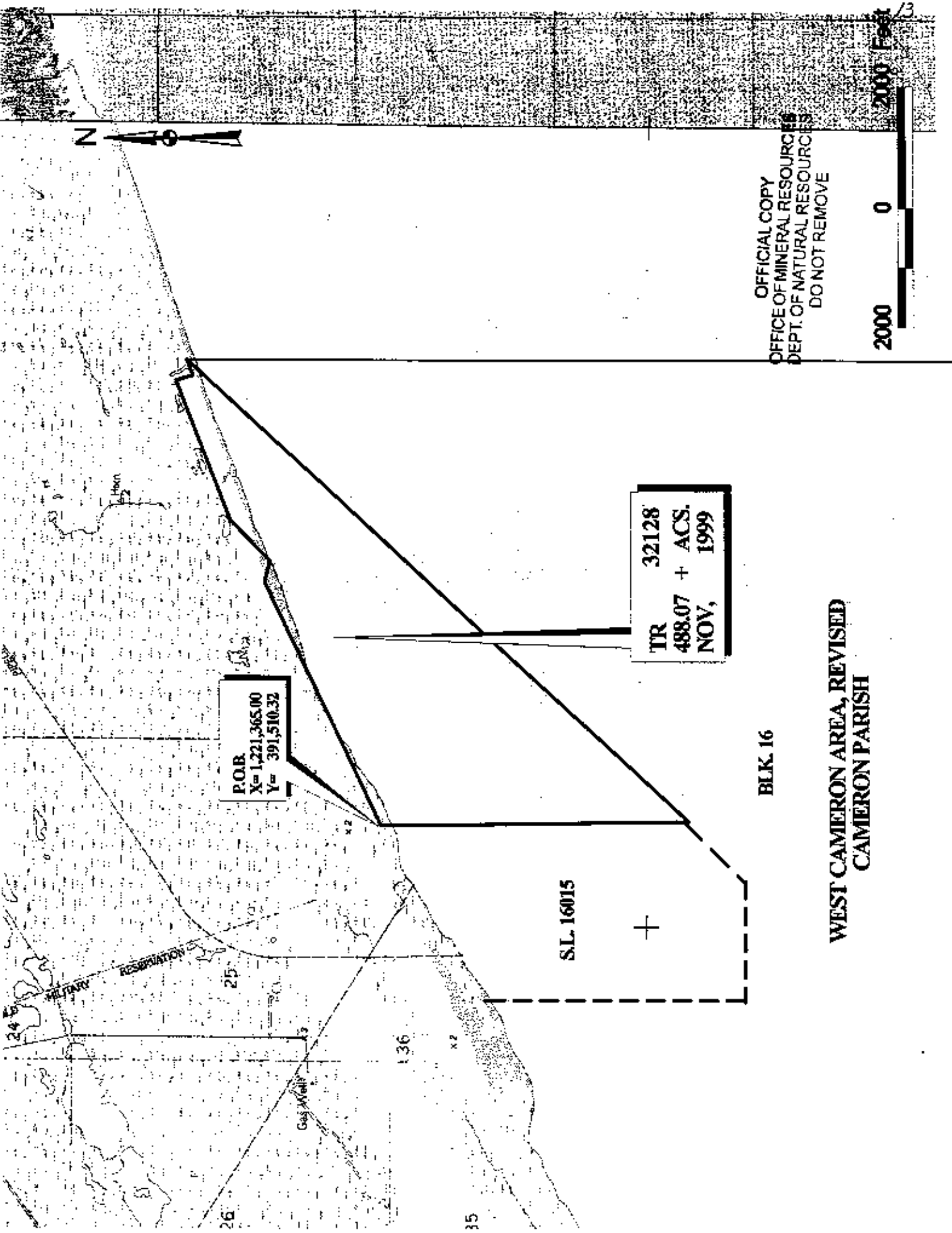
Bidder	Cash Payment	Price / Acre	Rental	Oil	Gas	Other



OFFICIAL COPY
OFFICE OF MINERAL RESOURCES
DEPT. OF NATURAL RESOURCES
DO NOT REMOVE

2000 0 2000 Feet

13



P.O.B.
X= 1,221,365.00
Y= 391,510.32

TR 32128
488.07 + ACS.
NOV, 1999

S.L. 16015

BLK. 16

WEST CAMERON AREA, REVISED
CAMERON PARISH

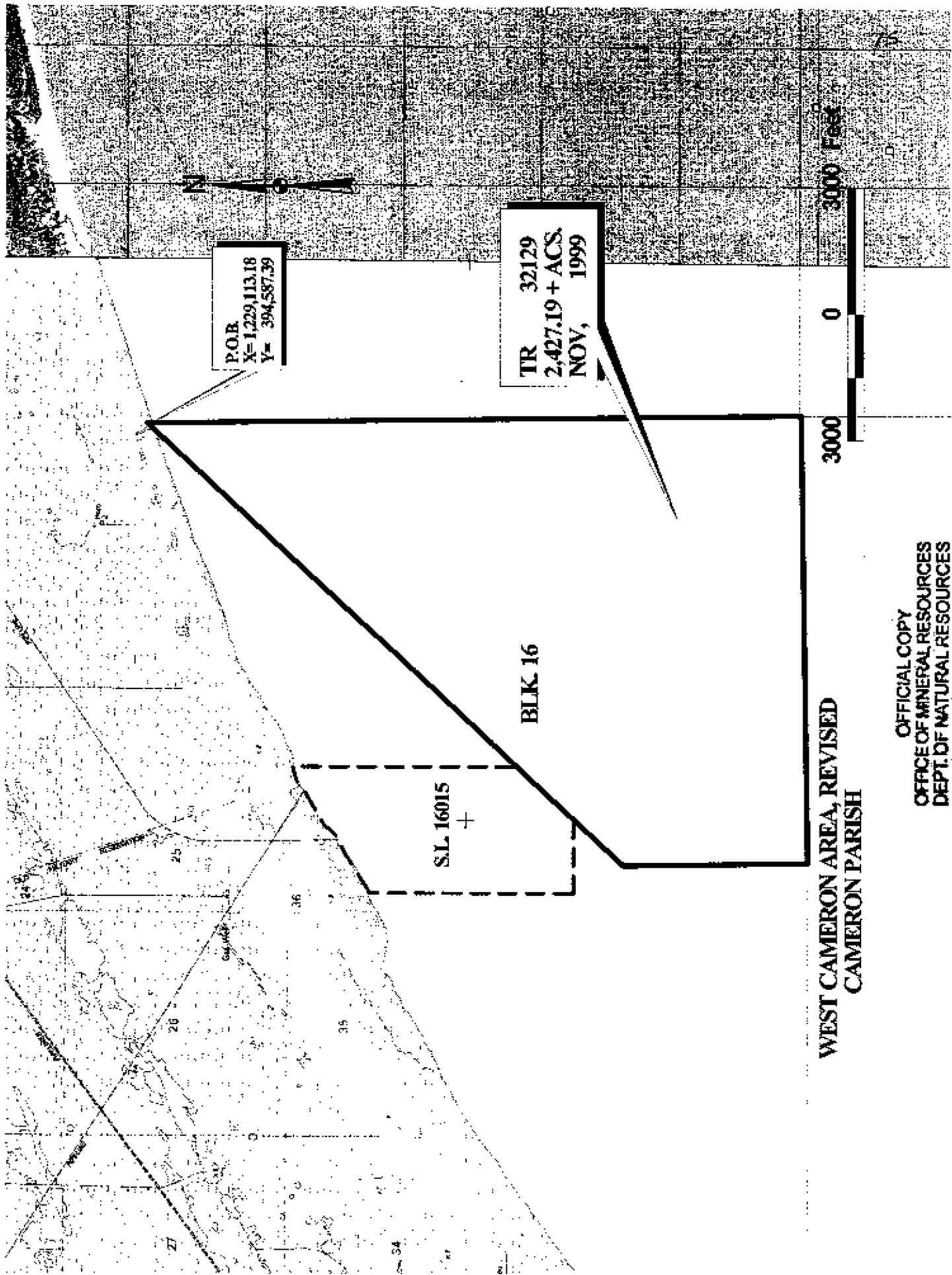
TRACT 32129 - PORTION OF BLOCK 16, WEST CAMERON AREA, REVISED, Cameron Parish, Louisiana

That portion of Block 16, West Cameron Area, Revised, Cameron Parish, Louisiana, belonging to the State of Louisiana and not under mineral lease on November 10, 1999, described as follows: Beginning at a point which is the Northeast corner of Block 16, West Cameron Area, Revised, having Coordinates of X = 1,229,113.18 and Y = 394,587.39; thence South along the East line of said Block 16 to its Southeast corner having Coordinates of X = 1,229,113.18 and Y = 379,032.19; thence West along the South line of said Block 16 10,613.18 feet to a point having Coordinates of X = 1,218,500.00 and Y = 379,032.19; thence North on a straight line to a point having Coordinates of X = 1,218,500.00 and Y = 383,400.94; thence Northeasterly on a straight line to the most Southerly Southeast corner of State Lease No. 16015 having Coordinates of X = 1,219,979.16 and Y = 384,959.99; thence Northeasterly on a straight line to the most Northerly Southeast corner of said State Lease No. 16015 having Coordinates of X = 1,221,365.00 and Y = 386,420.69; thence Northeasterly on a straight line to the point of beginning, containing approximately 2,427.19 acres, as shown outlined in red on a plat on file in the Office of Mineral Resources, Department of Natural Resources. All bearings, distances and coordinates are based on Louisiana Coordinate System of 1927 (South Zone).

NOTE: The State of Louisiana does hereby reserve, and this lease shall be subject to, the imprescriptible right of surface use in the nature of a servitude in favor of the Department of Natural Resources, including its Offices and Commissions, for the sole purpose of implementing, constructing, servicing and maintaining approved coastal zone management and/or restoration projects. Utilization of any and all rights derived under this lease by the mineral lessee, its agents, successors or assigns, shall not interfere with nor hinder the reasonable surface use by the Department of Natural Resources, its Offices or Commissions, as hereinabove reserved.

Applicant: Woodland Petroleum Corporation

Bidder	Cash Payment	Price / Acre	Rental	Oil	Gas	Other



P.O.B.
X= 1,229,113.18
Y= 394,587.39

TR 32129
2,427.19 + ACS.
NOV, 1999

S.L. 16015
+

BLK. 16

3000 0 3000 Feet

WEST CAMERON AREA, REVISED
CAMERON PARISH

OFFICIAL COPY
OFFICE OF MINERAL RESOURCES
DEPT. OF NATURAL RESOURCES
DO NOT REMOVE

TRACT 32130 - PORTION OF BLOCK 14, WEST CAMERON AREA, REVISED, Cameron Parish, Louisiana

That portion of Block 14, West Cameron Area, Revised, Cameron Parish, Louisiana, belonging to the State of Louisiana and not under mineral lease on November 10, 1999, described as follows: Beginning at the Southwest corner of Block 14, West Cameron Area, Revised, having Coordinates of X = 1,229,113.18 and Y = 393,790.24; thence North 797.15 feet to a point having Coordinates of X = 1,229,113.18 and Y = 394,587.39; thence Northeasterly on a straight line to a point having Coordinates of X = 1,233,256 and Y = 395,989; thence Northeasterly on a straight line to a point having Coordinates of X = 1,235,668 and Y = 396,741; thence Northeasterly on a straight line to the Northwest corner of State Lease No. 14422 having Coordinates of X = 1,238,591.23 and Y = 397,440.61; thence South 2,528.40 feet on the West line of said State Lease No. 14422 to its Southwest corner having Coordinates of X = 1,238,591.23 and Y = 394,912.21; thence East 3,804.67 feet on the South line of said State Lease No. 14422 to the Northwest corner of State Lease No. 16224 having Coordinates of X = 1,242,395.90 and Y = 394,912.21; thence South 1,121.97 feet on the West line of said State Lease No. 16224 to its Southwest corner, also being a point on the South line of said Block 14 having Coordinates of X = 1,242,395.90 and Y = 393,790.24; thence West 13,282.72 feet on the South line of said Block 14 to the point of beginning, containing approximately 604.53 acres, as shown outlined in red on a plat on file in the Office of Mineral Resources, Department of Natural Resources. All bearings, distances and coordinates are based on Louisiana Coordinate System of 1927 (South Zone).

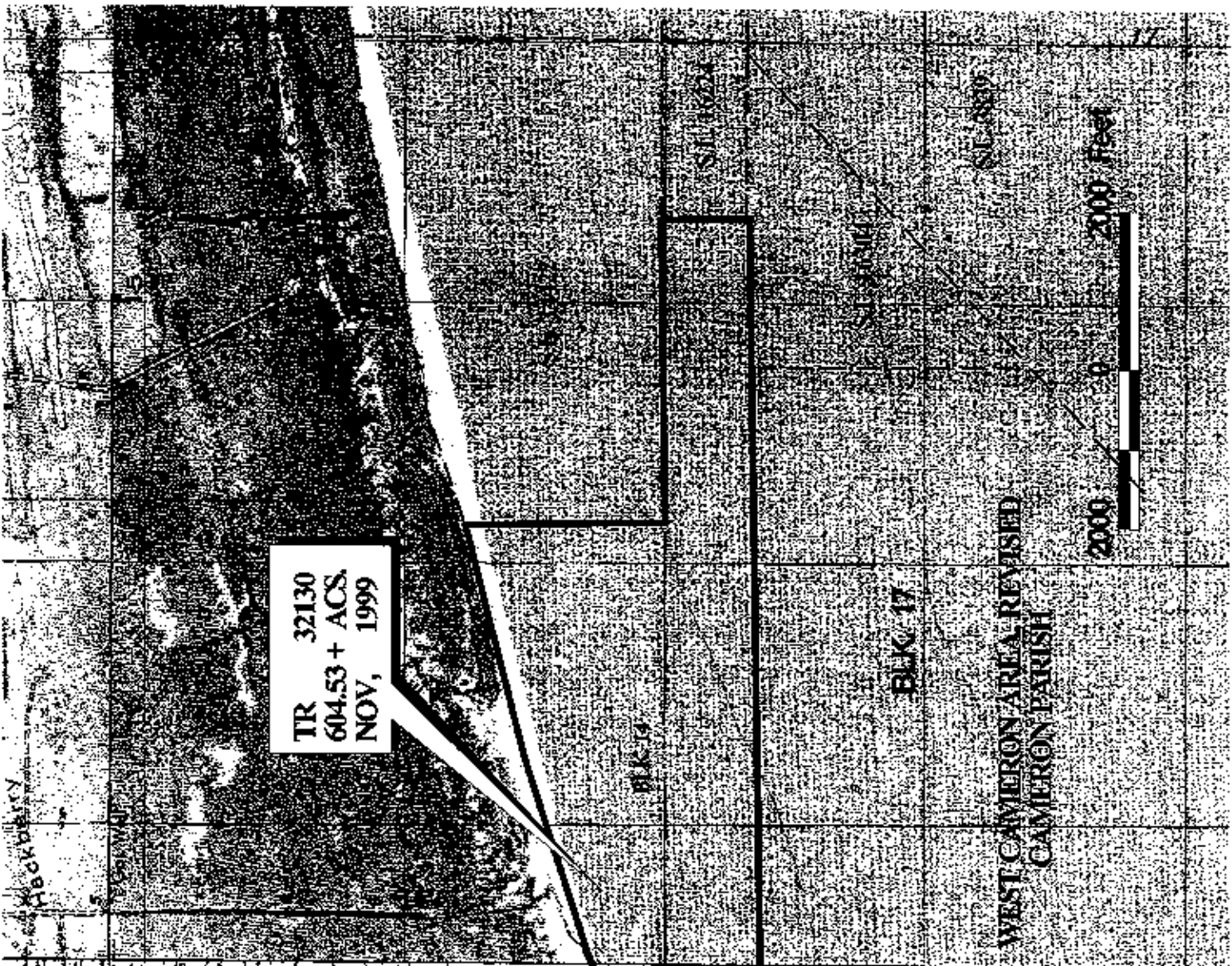
NOTE: The State of Louisiana does hereby reserve, and this lease shall be subject to, the imprescriptible right of surface use in the nature of a servitude in favor of the Department of Natural Resources, including its Offices and Commissions, for the sole purpose of implementing, constructing, servicing and maintaining approved coastal zone management and/or restoration projects. Utilization of any and all rights derived under this lease by the mineral lessee, its agents, successors or assigns, shall not interfere with nor hinder the reasonable surface use by the Department of Natural Resources, its Offices or Commissions, as hereinabove reserved.

Applicant: Woodland Petroleum Corporation

Bidder	Cash Payment	Price / Acre	Rental	Oil	Gas	Other

Hackberry

Hackberry



TR 32130
 604.53 + ACS,
 NOV, 1999

P.O.B.
 X= 1,229,113.18
 Y= 393,790.24

BLK-14

BLK-17

SE-2802

SE-2803

WEST CAMERON AREA, REVISED
 CAMERON PARISH



OFFICIAL COPY
 OFFICE OF MINERAL RESOURCES
 DEPT. OF NATURAL RESOURCES
 DO NOT REMOVE

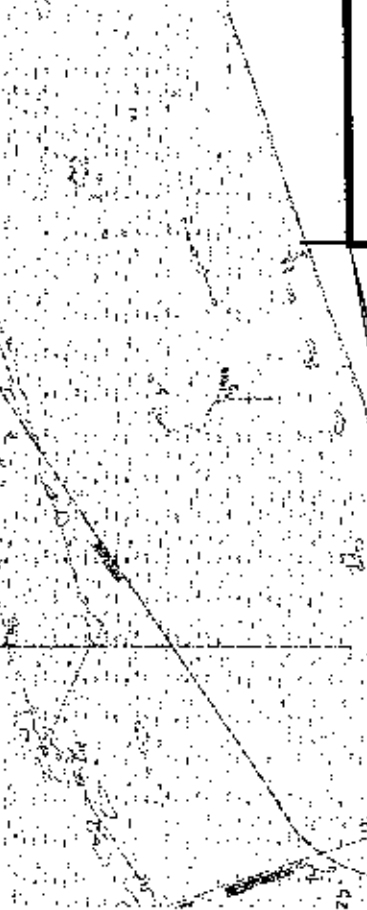
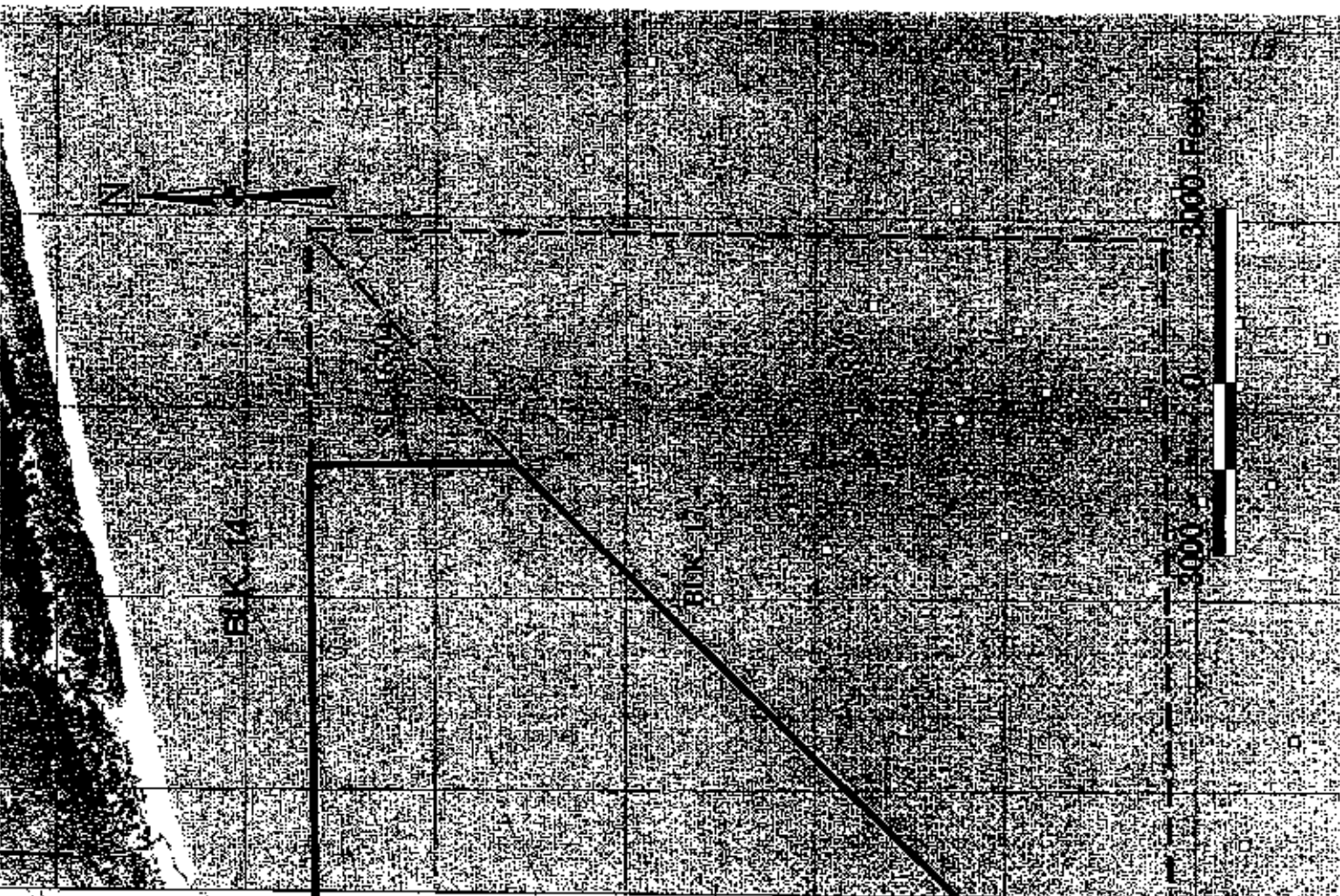
TRACT 32131 - PORTION OF BLOCK 17, WEST CAMERON AREA, REVISED, Cameron Parish, Louisiana

That portion of Block 17, West Cameron Area, Revised, Cameron Parish, Louisiana, belonging to the State of Louisiana and not under mineral lease on November 10, 1999, described as follows: Beginning at the Northwest corner of Block 17, West Cameron Area, Revised, having Coordinates of X = 1,229,113.18 and Y = 393,790.24; thence East 11,228.43 feet along the North line of said Block 17 to the Northwest corner of State Lease No. 16304 having Coordinates of X = 1,240,341.61 and Y = 393,790.24; thence South 3,529.62 feet along the West line of said State Lease No. 16304 to its Southwest corner, also being a point on the Northwest boundary of State Lease No. 3839 having Coordinates of X = 1,240,341.61 and Y = 390,260.62; thence South 45 degrees 00 minutes 00 seconds West 15,879.39 feet on the boundary of said State Lease No. 3839 to its Southwest corner, also being the Southwest corner of said Block 17 having Coordinates of X = 1,229,113.18 and Y = 379,032.19; thence North 14,758.05 feet to the point of beginning, containing approximately 2,357.00 acres, as shown outlined in red on a plat on file in the Office of Mineral Resources, Department of Natural Resources. All bearings, distances and coordinates are based on Louisiana Coordinate System of 1927 (South Zone).

NOTE: The State of Louisiana does hereby reserve, and this lease shall be subject to, the imprescriptible right of surface use in the nature of a servitude in favor of the Department of Natural Resources, including its Offices and Commissions, for the sole purpose of implementing, constructing, servicing and maintaining approved coastal zone management and/or restoration projects. Utilization of any and all rights derived under this lease by the mineral lessee, its agents, successors or assigns, shall not interfere with nor hinder the reasonable surface use by the Department of Natural Resources, its Offices or Commissions, as hereinabove reserved.

Applicant: Woodland Petroleum Corporation

Bidder	Cash Payment	Price / Acre	Rental	Oil	Gas	Other



P.O.B.
X= 1,229,113.18
Y= 393,790.24

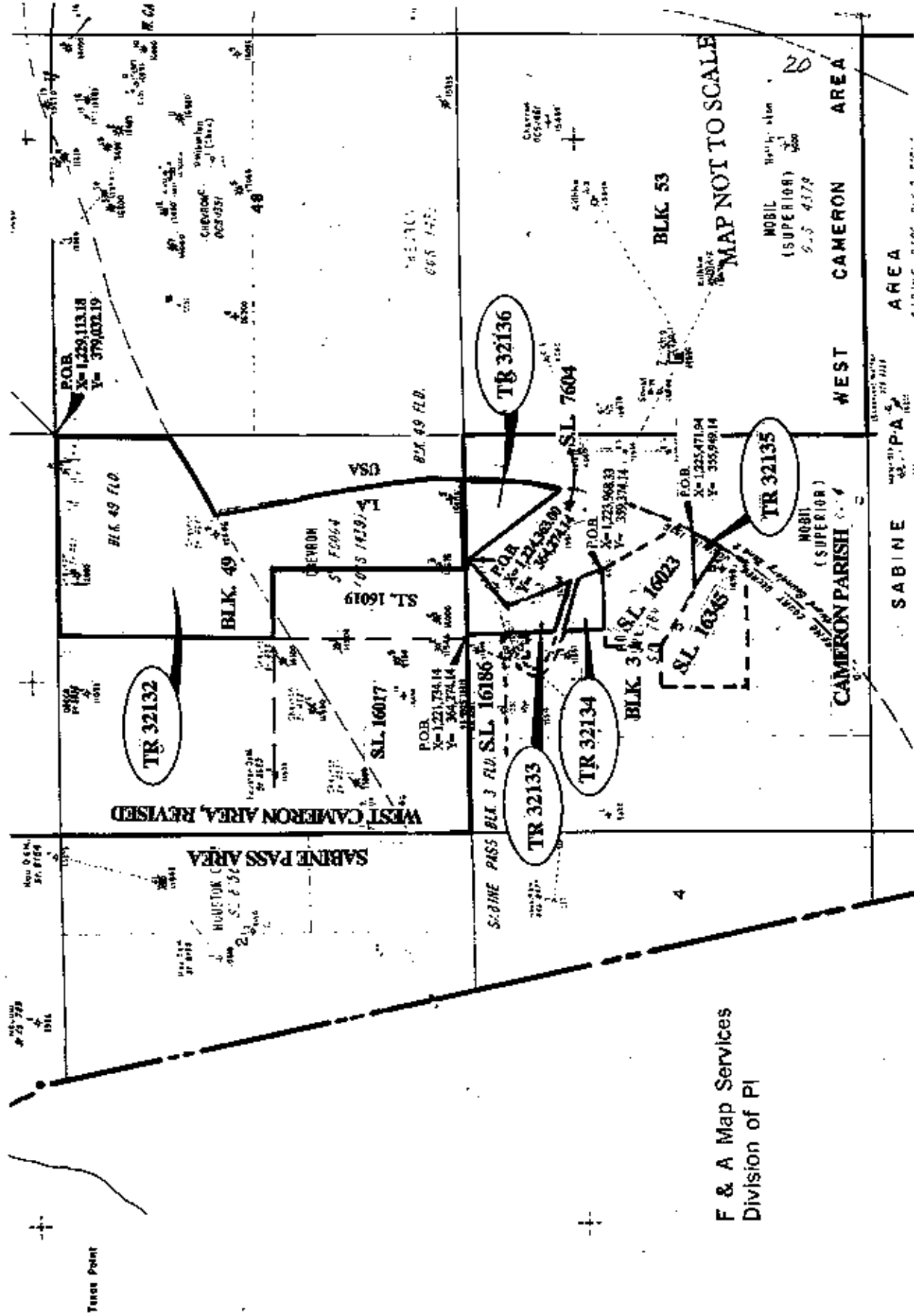
OFFICIAL COPY
OFFICE OF MINERAL RESOURCES
DEPT. OF NATURAL RESOURCES
DO NOT REMOVE



TR 32131
2,357.00 + ACS,
NOV, 1999

WEST CAMERON AREA, REVISED
CAMERON PARISH

NOT TO BE USED WITH A PORTION BID
FOR INFORMATIONAL PURPOSES ONLY!



F & A Map Services
Division of PI

TRACT 32132 - PORTION OF BLOCK 49, WEST CAMERON AREA, REVISED, Cameron Parish, Louisiana

That portion of Block 49, West Cameron Area, Revised, Cameron Parish, Louisiana, belonging to the State of Louisiana and not under mineral lease on November 10, 1999, described as follows: Beginning at the Northeast corner of Block 49 having Coordinates of X = 1,229,113.18 and Y = 379,032.19; thence South 4,035.61 feet along the East line of said Block 49 to a point having Coordinates of X = 1,229,113.18 and Y = 374,996.58; thence along a straight line to a point having Coordinates of X = 1,229,077 and Y = 374,980; thence Southwesterly along an arc having a radius of 18,240.60 feet and a center at X = 1,219,065 and Y = 390,227 to a point having Coordinates of X = 1,227,371 and Y = 373,987; thence Southwesterly along a straight line to a point having Coordinates of X = 1,226,185 and Y = 373,381; thence Southeasterly along a straight line to a point having Coordinates of X = 1,227,214 and Y = 367,277; thence Southeasterly along an arc having a radius of 18,240.60 feet and a center at X = 1,209,227 and Y = 364,245 to a point on the South boundary of said Block 49 having Coordinates of X = 1,227,467.58 and Y = 364,274.14; thence West 3,233.42 feet along the South boundary of said Block 49 to the Southeast corner of State Lease No. 16019 having Coordinates of X = 1,224,234.16 and Y = 364,274.14; thence North 7,000.00 feet along the East boundary of said State Lease No. 16019 to its Northeast corner having Coordinates of X = 1,224,234.16 and Y = 371,274.14; thence West 2,500.00 feet along the North boundary of said State Lease No. 16019 to its Northwest corner, also being the Northeast corner of State Lease No. 16017, having Coordinates of X = 1,221,734.16 and Y = 371,274.14; thence North 7,758.05 feet to a point on the North line of said Block 49 having Coordinates of X = 1,221,734.16 and Y = 379,032.19; thence East 7,379.02 feet on the North line of said Block 49 to the point of beginning, containing approximately 1,588.77 acres, as shown outlined in red on a plat on file in the Office of Mineral Resources, Department of Natural Resources, **LESS AND EXCEPT** that portion thereof, if any, which is more than three nautical miles from the coast line as determined by the Report of the Special Master in the litigation in the Supreme Court of the United States styled United States v. State of Louisiana et al No. 9 Original, said three mile line as set out in the June, 1975, decree of the Supreme Court. All bearings, distances and coordinates are based on Louisiana Coordinate System of 1927 (South Zone).

NOTE: The State of Louisiana does hereby reserve, and this lease shall be subject to, the imprescriptible right of surface use in the nature of a servitude in favor of the Department of Natural Resources, including its Offices and Commissions, for the sole purpose of implementing, constructing, servicing and maintaining approved coastal zone management and/or restoration projects. Utilization of any and all rights derived under this lease by the mineral lessee, its agents, successors or assigns, shall not interfere with nor hinder the reasonable surface use by the Department of Natural Resources, its Offices or Commissions, as hereinabove reserved.

Applicant: Woodland Petroleum Corporation

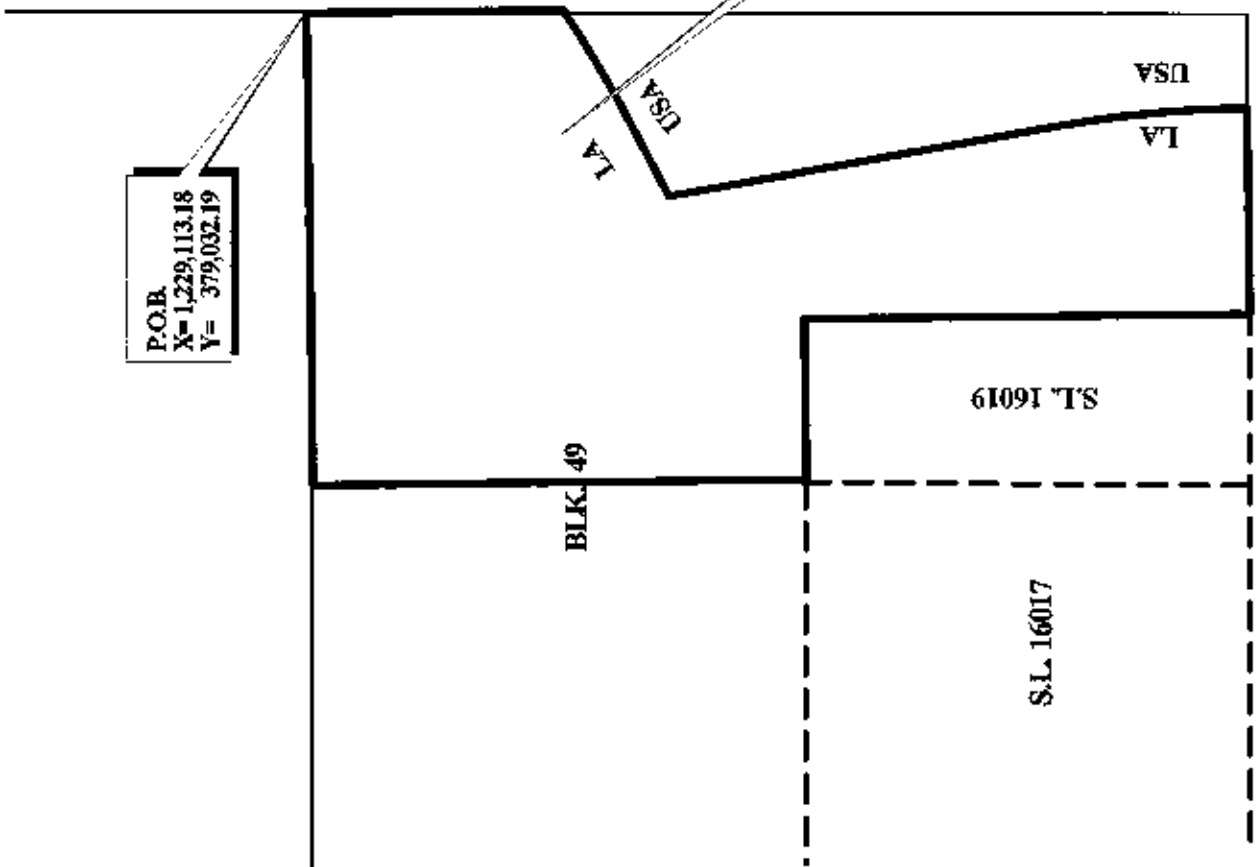
Bidder	Cash Payment	Price / Acre	Rental	Oil	Gas	Other



OFFICIAL COPY
OFFICE OF MINERAL RESOURCES
DEPT. OF NATURAL RESOURCES
DO NOT REMOVE

P.O.B.
X= 1,229,113.18
Y= 379,032.19

TR 32132
1,588.77 + ACS,
NOV, 1999



WEST CAMERON AREA, REVISED
CAMERON PARISH

TRACT 32133 - PORTION OF BLOCK 3, SABINE PASS AREA, Cameron Parish, Louisiana

That portion of Block 3, Sabine Pass Area, Cameron Parish, Louisiana, belonging to the State of Louisiana and not under mineral lease on November 10, 1999, described as follows: Beginning at a point on the North line of Block 3, Sabine Pass Area, also being the Northeast corner of State Lease No. 16186 having Coordinates of X = 1,221,734.14 and Y = 364,274.14; thence East 2,158.86 feet to the most Northerly Northwest corner of Tract "C" State Lease No. 7604, as amended, having Coordinates of X = 1,223,893.00 and Y = 364,274.14; thence along the boundary of said Tract "C" the following courses: Southwesterly on a straight line to a point having Coordinates of X = 1,222,734 and Y = 362,807; Southeasterly on a straight line to the intersection with Tract "B" of said State Lease No. 7604 having Coordinates of X = 1,223,582 and Y = 360,446; thence Northwesterly along the boundary of said Tract "B" to a point having Coordinates of X = 1,221,734.14 and Y = 361,109.90; thence North 1,864.24 feet to the Southeast corner of said State Lease No. 16186 having Coordinates of X = 1,221,734.14 and Y = 362,974.14; thence North 1,300.00 feet on the East line of said State Lease No. 16186 to the point of beginning, **LESS AND EXCEPT** that portion of State Lease No. 7604, as amended, that may lie within the above described tract, containing approximately 116.98 acres, as shown outlined in red on a plat on file in the Office of Mineral Resources, Department of Natural Resources. All bearings, distances and coordinates are based on Louisiana Coordinate System of 1927 (South Zone).

NOTE: The State of Louisiana does hereby reserve, and this lease shall be subject to, the imprescriptible right of surface use in the nature of a servitude in favor of the Department of Natural Resources, including its Offices and Commissions, for the sole purpose of implementing, constructing, servicing and maintaining approved coastal zone management and/or restoration projects. Utilization of any and all rights derived under this lease by the mineral lessee, its agents, successors or assigns, shall not interfere with nor hinder the reasonable surface use by the Department of Natural Resources, its Offices or Commissions, as hereinabove reserved.

Applicant: Woodland Petroleum Corporation

Bidder	Cash Payment	Price / Acre	Rental	Oil	Gas	Other

BLK. 49

P.O.B.
X= 1221,734.14
Y= 364,274.14

WEST CAMERON AREA, REVISED

SABINE PASS AREA

S.L. 16186

TR 32133
116.98 + ACS,
NOV., 1999

(TRACT A)

(TRACT B)

S.L. 7604
(TRACT C)

BLK. 3

CAMERON PARISH

BLK. 33



OFFICIAL COPY
OFFICE OF MINERAL RESOURCES
DEPT. OF NATURAL RESOURCES
DO NOT REMOVE

2000 0 2000 Feet



TRACT 32134 - PORTION OF BLOCK 3, SABINE PASS AREA, Cameron Parish, Louisiana

That portion of Block 3, Sabine Pass Area, Cameron Parish, Louisiana, belonging to the State of Louisiana and not under mineral lease on November 10, 1999, described as follows: Beginning at a point within Block 3, Sabine Pass Area, said point being the Northeast corner of State Lease No. 16023 located on the West line of Tract "C" of State Lease No. 7604, as amended, having Coordinates of X = 1,223,968.33 and Y = 359,374.14; thence West 2,234.17 feet along the North line of said State Lease No. 16023 to a point having Coordinates of X = 1,221,734.16 and Y = 359,374.14; thence North 1,520.89 feet to a point on the South line of Tract "B" of said State Lease No. 7604; thence Southeasterly along the South line of said State Lease No. 7604 to a point on the West line of Tract "C" of said State Lease No. 7604 having Coordinates of X = 1,223,662.86 and Y = 360,224.10; thence South 19 degrees 46 minutes 06 seconds East along the West line of said Tract "C" of said State Lease No. 7604 to the point of beginning, **LESS AND EXCEPT** any portion of State Lease No. 7604, as amended, that may lie within the above described tract, containing approximately 54.43 acres, as shown outlined in red on a plat on file in the Office of Mineral Resources, Department of Natural Resources. All bearings, distances and coordinates are based on Louisiana Coordinate System of 1927 (South Zone).

NOTE: The State of Louisiana does hereby reserve, and this lease shall be subject to, the imprescriptible right of surface use in the nature of a servitude in favor of the Department of Natural Resources, including its Offices and Commissions, for the sole purpose of implementing, constructing, servicing and maintaining approved coastal zone management and/or restoration projects. Utilization of any and all rights derived under this lease by the mineral lessee, its agents, successors or assigns, shall not interfere with nor hinder the reasonable surface use by the Department of Natural Resources, its Offices or Commissions, as hereinabove reserved.

Applicant: Woodland Petroleum Corporation

Bidder	Cash Payment	Price / Acre	Rental	Oil	Gas	Other

BLK 49

WEST CAMERON AREA, REVISED

SABINE PASS AREA

(TRACT A)

(TRACT C)

BLK 3

S.L. 7604

(TRACT B)

S.L. 16023

TR 32134
54.43 + ACS.
NOV., 1999

P.O.B.
X= 1223.968.33
Y= 359.374.14



BLK 33

OFFICIAL COPY
OFFICE OF MINERAL RESOURCES
DEPT. OF NATURAL RESOURCES
DO NOT REMOVE

2000 Feet

0

CAMERON PARISH

TRACT 32135 - PORTION OF BLOCK 3, SABINE PASS AREA, Cameron Parish, Louisiana

That portion of Block 3, Sabine Pass Area, Cameron Parish, Louisiana, belonging to the State of Louisiana and not under mineral lease on November 10, 1999, described as follows: Beginning at a point within Block 3, Sabine Pass Area, also being the Southern most Southeast corner of State Lease No. 16023 having Coordinates of X = 1,225,471.94 and Y = 355,949.14; thence along an arc having a radius of 18,240.60 feet and a vertex of X = 1,209,227 and Y = 364,245 to the Eastern most corner of State Lease No. 16345 having Coordinates of X = 1,224,909.84 and Y = 354,930.07; thence North 56 degrees 52 minutes 20 seconds West 1,864.69 feet along the East line of said State Lease No. 16345 to the Southern most Southwest corner of said State Lease No. 16023 having Coordinates of X = 1,223,348.25 and Y = 355,949.14; thence East 2,123.69 feet along the South line of said State Lease No. 16023 to the point of beginning, containing approximately 25.01 acres, as shown outlined in red on a plat on file in the Office of Mineral Resources, Department of Natural Resources, **LESS AND EXCEPT** that portion thereof, if any, which is more than three nautical miles from the coast line as determined by the Report of the Special Master in the litigation in the Supreme Court of the United States styled United States v. State of Louisiana et al No. 9 Original, said three mile line as set out in the June, 1975, decree of the Supreme Court. All bearings, distances and coordinates are based on Louisiana Coordinate System of 1927 (South Zone).

NOTE: It appears, according to our records, that a portion of this tract is located within the restrictive anchorage area as set out by the U. S. Coast Guard.

NOTE: The State of Louisiana does hereby reserve, and this lease shall be subject to, the imprescriptible right of surface use in the nature of a servitude in favor of the Department of Natural Resources, including its Offices and Commissions, for the sole purpose of implementing, constructing, servicing and maintaining approved coastal zone management and/or restoration projects. Utilization of any and all rights derived under this lease by the mineral lessee, its agents, successors or assigns, shall not interfere with nor hinder the reasonable surface use by the Department of Natural Resources, its Offices or Commissions, as hereinabove reserved.

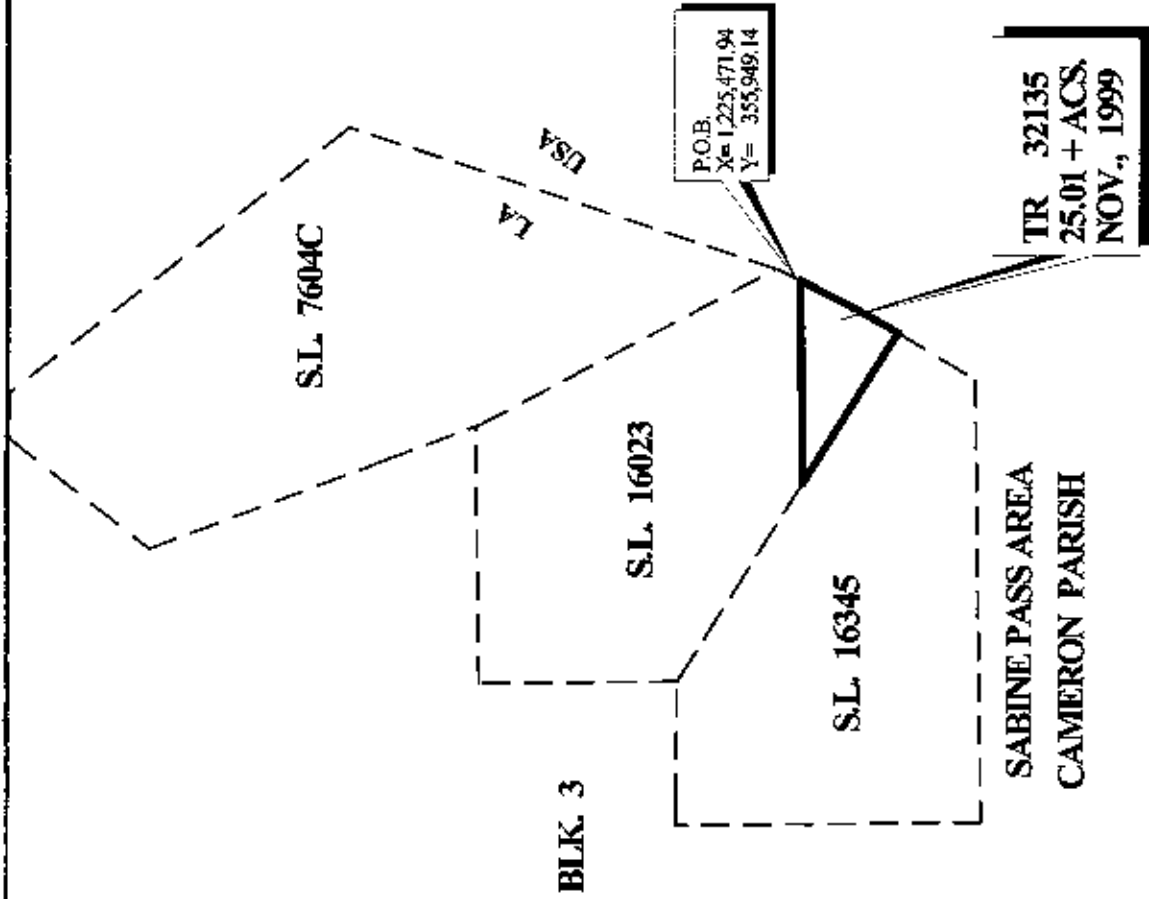
Applicant: Acadian Land Services, Inc.

Bidder	Cash Payment	Price / Acre	Rental	Oil	Gas	Other



WEST CAMERON AREA, REVISED

BLK. 53



BLK. 3

OFFICIAL COPY
OFFICE OF MINERAL RESOURCES
DEPT. OF NATURAL RESOURCES
DO NOT REMOVE

BLK. 6

TRACT 32136 - PORTION OF BLOCK 3, SABINE PASS AREA, Cameron Parish, Louisiana

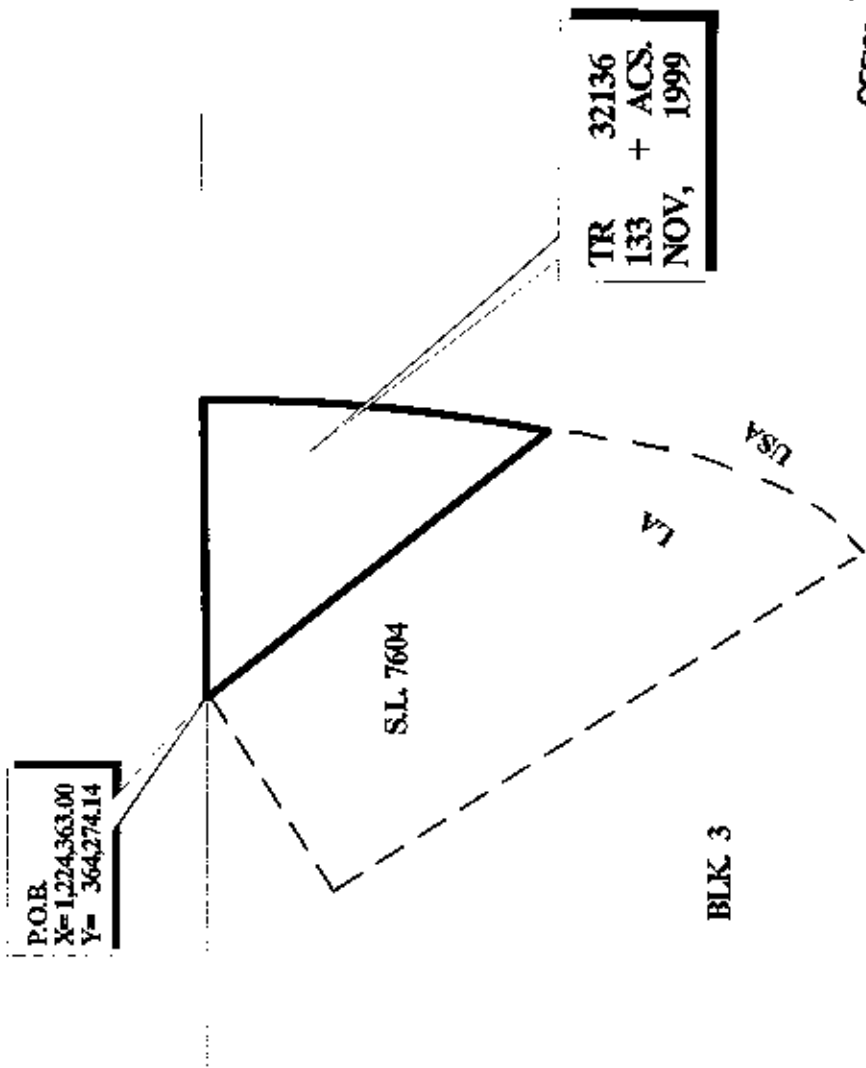
That portion of Block 3, Sabine Pass Area, Cameron Parish, Louisiana, belonging to the State of Louisiana and not under mineral lease on November 10, 1999, described as follows: Beginning at a point on the North line of Block 3, Sabine Pass Area, also being a Northeast corner of State Lease No. 7604, as amended, having Coordinates of X = 1,224,363.00 and Y = 364,274.14; thence East on the North line of said Block 3 to its point of intersection with the State/Federal boundary having Coordinates of X = 1,227,467.58 and Y = 364,274.14; thence in a Southwesterly direction along an arc having a radius of 18,240.60 feet and a center of X = 1,227,111 and Y = 360,654 to a point having Coordinates of X = 1,227,110.62 and Y = 360,653.93; thence Northwest on the East line of said State Lease No. 7604 to the point of beginning, containing approximately **133 acres**, as shown outlined in red on a plat on file in the Office of Mineral Resources, Department of Natural Resources, **LESS AND EXCEPT** that portion thereof, if any, which is more than three nautical miles from the coast line as determined by the Report of the Special Master in the litigation in the Supreme Court of the United States styled United States v. State of Louisiana et al No. 9 Original, said three mile line as set out in the June, 1975, decree of the Supreme Court. All bearings, distances and coordinates are based on Louisiana Coordinate System of 1927 (South Zone).

NOTE: It appears, according to our records, that a portion of this tract is located within the restrictive safety fairway area as set out by the Corps of Engineers, U. S. Army and the restrictive anchorage area as set out by the U. S. Coast Guard.

NOTE: The State of Louisiana does hereby reserve, and this lease shall be subject to, the imprescriptible right of surface use in the nature of a servitude in favor of the Department of Natural Resources, including its Offices and Commissions, for the sole purpose of implementing, constructing, servicing and maintaining approved coastal zone management and/or restoration projects. Utilization of any and all rights derived under this lease by the mineral lessee, its agents, successors or assigns, shall not interfere with nor hinder the reasonable surface use by the Department of Natural Resources, its Offices or Commissions, as hereinabove reserved.

Applicant: Woodland Petroleum Corporation

Bidder	Cash Payment	Price / Acre	Rental	Oil	Gas	Other



P.O.B.
 X= 1,224,363.00
 Y= 364,274.14

TR 32136
 + ACS.
 NOV, 1999

S.L. 7604

BLK 3

LA

USA

OFFICIAL COPY
 OFFICE OF MINERAL RESOURCES
 DEPT. OF NATURAL RESOURCES
 DO NOT REMOVE

SABINE PASS AREA
 CAMERON PARISH



TRACT 32137 - PORTION OF BLOCK 24, GRAND ISLE AREA, Jefferson Parish, Louisiana

That portion of Block 24, Grand Isle Area, Jefferson Parish, Louisiana, belonging to the State of Louisiana and not under mineral lease on November 10, 1999, described as follows: Beginning at the Northwest corner of Block 24, Grand Isle Area, having Coordinates of X = 2,398,627.73 and Y = 170,777.35; thence East 6,700.00 feet along the North line of said Block 24 to a point having Coordinates of X = 2,405,327.73 and Y = 170,777.35; thence South 6,626.53 feet to a point having Coordinates of X = 2,405,327.73 and Y = 164,150.82; thence Southwesterly along an arc having a radius of 18,240.60 feet and a center at X = 2,393,610 and Y = 178,130 to a point having Coordinates of X = 2,404,972 and Y = 163,860; thence Southwesterly along a straight line to a point having Coordinates of X = 2,403,424.64 and Y = 162,628.00; thence West 4,796.91 feet to a point on the West line of said Block 24 having Coordinates of X = 2,398,627.73 and Y = 162,628.00; thence North 8,149.35 feet along the West line of said Block 24 to the point of beginning, containing approximately 1,220.34 acres, as shown outlined in red on a plat on file in the Office of Mineral Resources, Department of Natural Resources, **LESS AND EXCEPT** that portion thereof, if any, which is more than three nautical miles from the coast line as determined by the Report of the Special Master in the litigation in the Supreme Court of the United States styled United States v. State of Louisiana et al No. 9 Original, said three mile line as set out in the June, 1975, decree of the Supreme Court. All bearings, distances and coordinates are based on Louisiana Coordinate System of 1927 (South Zone).

NOTE: The State of Louisiana does hereby reserve, and this lease shall be subject to, the imprescriptible right of surface use in the nature of a servitude in favor of the Department of Natural Resources, including its Offices and Commissions, for the sole purpose of implementing, constructing, servicing and maintaining approved coastal zone management and/or restoration projects. Utilization of any and all rights derived under this lease by the mineral lessee, its agents, successors or assigns, shall not interfere with nor hinder the reasonable surface use by the Department of Natural Resources, its Offices or Commissions, as hereinabove reserved.

Tract Advertised by the State Mineral Board

Bidder	Cash Payment	Price / Acre	Rental	Oil	Gas	Other

JEFFERSON PARISH
LAFORCHE PARISH

P.O.B.
X= 2,398,627.73
Y= 170,777.35

BLK. 24

TR 32137
1,220.34 + ACS,
NOV, 1999

GRAND ISLE AREA

OFFICIAL COPY
OFFICE OF MINERAL RESOURCES
DEPT. OF NATURAL RESOURCES
DO NOT REMOVE

