

TRACT 45356 - Concordia Parish, Louisiana

All of the lands now or formerly constituting the beds and bottoms of all water bodies of every nature and description as to which title is vested in the State of Louisiana, together with all islands arising therein and other lands formed by accretion or by reliction, where allowed by law, excepting tax adjudicated lands, and not presently under mineral lease on October 14, 2020, situated in Concordia Parish, Louisiana, and more particularly described as follows: Beginning at a point having Coordinates of X = 2,336,761.02 and Y = 372,648.82; thence East 2,640.00 feet to a point having Coordinates of X = 2,339,401.02 and Y = 372,648.82; thence South 2,640.00 feet to a point having Coordinates of X = 2,339,401.02 and Y = 370,008.82; thence West 2,640.00 feet to a point having Coordinates of X = 2,336,761.02 and Y = 370,008.82; thence North 2,640.00 feet to the point of beginning, containing approximately **69 acres**, all as more particularly outlined on a plat on file in the Office of Mineral Resources, Department of Natural Resources. All bearings, distances and coordinates are based on Louisiana Coordinate System of 1927, (North or South Zone), where applicable.

NOTE: The above description of the Tract nominated for lease has been provided and corrected, where required, exclusively by the nomination party. Any mineral lease selected from this Tract and awarded by the Louisiana State Mineral and Energy Board shall be without warranty of any kind, either express, implied, or statutory, including, but not limited to, the implied warranties of merchantability and fitness for a particular purpose. Should the mineral lease awarded by the Louisiana State Mineral and Energy Board be subsequently modified, cancelled or abrogated due to the existence of conflicting leases, operating agreements, private claims or other future obligations or conditions which may affect all or any portion of the leased Tract, it shall not relieve the Lessee of the obligation to pay any bonus due thereon to the Louisiana State Mineral and Energy Board, nor shall the Louisiana State Mineral and Energy Board be obligated to refund any consideration paid by the Lessor prior to such modification, cancellation, or abrogation, including, but not limited to, bonuses, rentals and royalties.

NOTE: The Office of Mineral Resources will require a minimum bonus of \$150 per acre and a minimum royalty of 20%.

Applicant: STAFF OFFICE OF MINERAL RESOURCES

Bidder	Cash Payment	Price/Acre	Rental	Oil	Gas	Other

Legend



20100003

Counties



CONCORDIA

T8N - R10E

P.O.B.

LAKE ST JOHN

0 1,000 Feet



TRACT 45357 - Lafourche Parish, Louisiana

All of the lands now or formerly constituting the beds and bottoms of all water bodies of every nature and description as to which title is vested in the State of Louisiana, together with all islands arising therein and other lands formed by accretion or by reliction, where allowed by law, excepting tax adjudicated lands, and not presently under mineral lease on October 14, 2020, situated in Lafourche Parish, Louisiana, and more particularly described as follows: Beginning at a point having Coordinates of X = 2,302,419.15 and Y = 203,619.51; thence East 8,500.00 feet to a point having Coordinates of X = 2,310,919.15 and Y = 203,619.51; thence South 7,617.43 feet to a point having Coordinates of X = 2,310,919.15 and Y = 196,002.08; thence South 89 degrees 31 minutes 36 seconds West 384.94 feet to a point on the boundary of State Lease No. 14703, as amended, also being a point on the boundary of State Lease No. 1480, as amended, having Coordinates of X = 2,310,534.22 and Y = 195,998.90; thence along said boundary of said State Lease No. 1480 the following courses and distances: North 43 degrees 10 minutes 40 seconds East 325.79 feet to a point having Coordinates of X = 2,310,757.15 and Y = 196,236.48, North 31 degrees 20 minutes 43 seconds West 2,037.70 feet to a point having Coordinates of X = 2,309,697.15 and Y = 197,976.77, South 84 degrees 46 minutes 18 seconds West 2,024.53 feet to a point having Coordinates of X = 2,307,681.04 and Y = 197,792.28; thence South 81 degrees 46 minutes 25 seconds West 1,105.08 feet to a point having Coordinates of X = 2,306,587.33 and Y = 197,634.16, South 77 degrees 05 minutes 33 seconds West 648.90 feet to a point having Coordinates of X = 2,305,954.83 and Y = 197,489.21, South 68 degrees 11 minutes 55 seconds West 851.53 feet to a point having Coordinates of X = 2,305,164.20 and Y = 197,172.96; thence South 64 degrees 51 minutes 17 seconds West 713.27 feet to a point having Coordinates of X = 2,304,518.52 and Y = 196,869.88, South 63 degrees 06 minutes 14 seconds West 901.62 feet to a point having Coordinates of X = 2,303,714.43 and Y = 196,462.01, and South 00 degrees 29 minutes 42 seconds East 522.01 feet to a point on the boundary of State Lease No. 3599, as amended, having Coordinates of X = 2,303,718.94 and Y = 195,940.02; thence along said boundary of said State Lease No. 3599 the following courses and distances: South 89 degrees 30 minutes 20 seconds West 870.00 feet to a point having Coordinates of X = 2,302,848.97 and Y = 195,932.51, North 00 degrees 29 minutes 43 seconds West 405.00 feet to a point having Coordinates of X = 2,302,845.47 and Y = 196,337.49 and South 89 degrees 30 minutes 18 seconds West 4,416.02 feet to a point having Coordinates of X = 2,298,429.62 and Y = 196,299.34; thence North 3,643.00 feet to a point having Coordinates of X = 2,298,429.62 and Y = 199,942.34; thence East 3,989.53 feet to a point having Coordinates of X = 2,302,419.15 and Y = 199,942.34; thence North 3,677.17 feet to the point of beginning, containing approximately **1,586.05 acres**, all as more particularly outlined on a plat on file in the Office of Mineral Resources, Department of Natural Resources. All bearings, distances and coordinates are based on Louisiana Coordinate System of 1927, (North or South Zone), where applicable.

NOTE: The above description of the Tract nominated for lease has been provided and corrected, where required, exclusively by the nomination party.

Any mineral lease selected from this Tract and awarded by the Louisiana State Mineral and Energy Board shall be without warranty of any kind, either express, implied, or statutory, including, but not limited to, the implied warranties of merchantability and fitness for a particular purpose. Should the mineral lease awarded by the Louisiana State Mineral and Energy Board be subsequently modified, cancelled or abrogated due to the existence of conflicting leases, operating agreements, private claims or other future obligations or conditions which may affect all or any portion of the leased Tract, it shall not relieve the Lessee of the obligation to pay any bonus due thereon to the Louisiana State Mineral and Energy Board, nor shall the Louisiana State Mineral and Energy Board be obligated to refund any consideration paid by the Lessor prior to such modification, cancellation, or abrogation, including, but not limited to, bonuses, rentals and royalties.

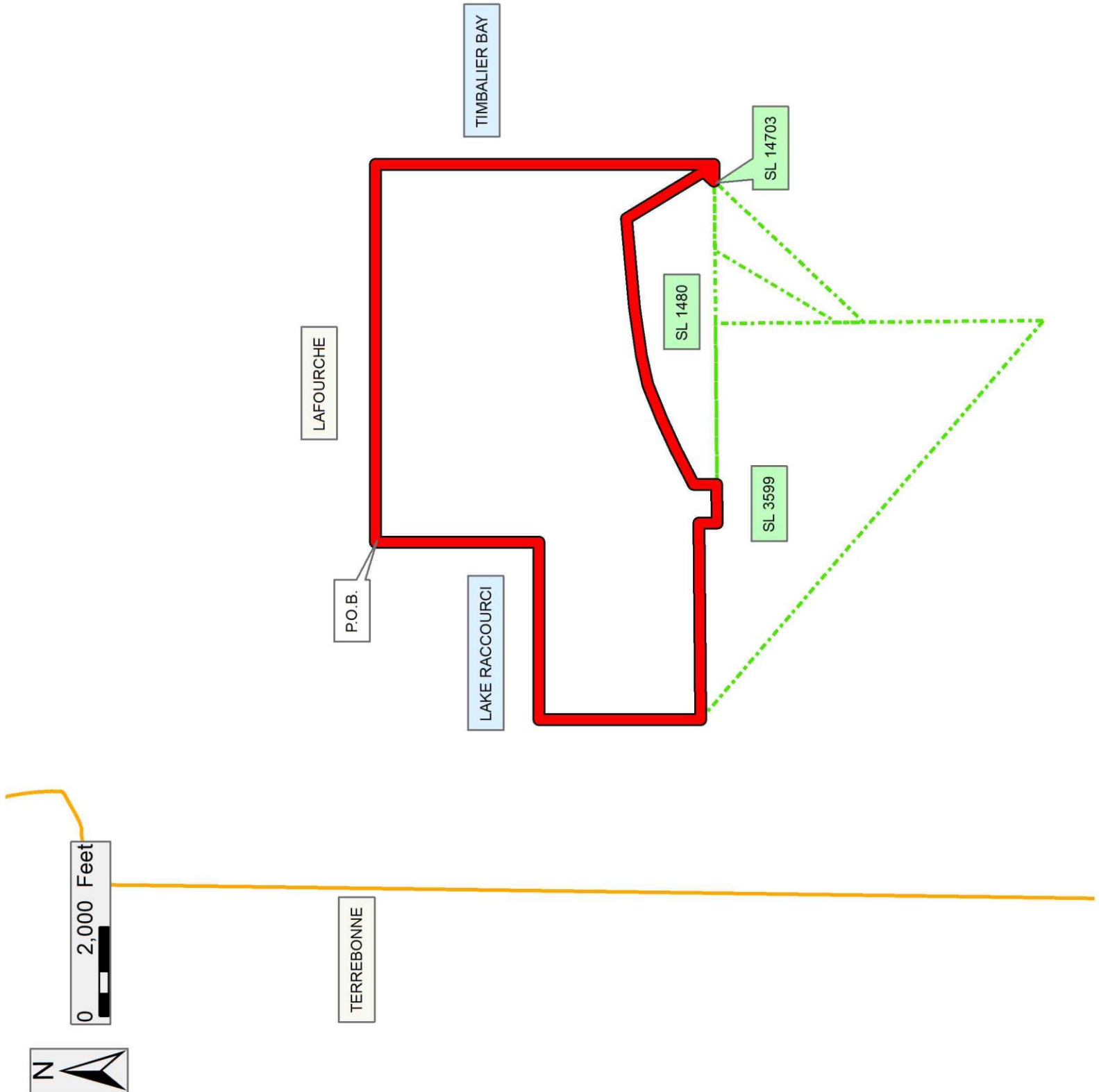
NOTE: The State of Louisiana does hereby reserve, and this lease shall be subject to, the imprescriptible right of surface use in the nature of a servitude in favor of the Department of Natural Resources, including its Offices and Commissions, for the sole purpose of implementing, constructing, servicing and maintaining approved coastal zone management and/or restoration projects. Utilization of any and all rights derived under this lease by the mineral lessee, its agents, successors or assigns, shall not interfere with nor hinder the reasonable surface use by the Department of Natural Resources, its Offices or Commissions, as herein above reserved.

Applicant: LOUISIANA BAYOU OIL & GAS CO.

Bidder	Cash Payment	Price/Acre	Rental	Oil	Gas	Other

Legend

- 20100001
- Active_Leases
- Counties



Office of Mineral Resources, Acres: 1586.05 Tract Number: 45357

TRACT 45358 - Lafourche Parish, Louisiana

All of the lands now or formerly constituting the beds and bottoms of all water bodies of every nature and description as to which title is vested in the State of Louisiana, together with all islands arising therein and other lands formed by accretion or by reliction, where allowed by law, excepting tax adjudicated lands, and not presently under mineral lease on October 14, 2020, situated in Lafourche Parish, Louisiana, and more particularly described as follows: Beginning at a point on the boundary of State Lease No. 3599, as amended, having Coordinates of X = 2,298,429.62 and Y = 196,299.34; thence South 49 degrees 19 minutes 18 seconds East 11,823.77 feet along said boundary of said State Lease No. 3599 to a point having Coordinates of X = 2,307,396.54 and Y = 188,592.47; thence South 3,823.47 feet to a point having Coordinates of X = 2,307,396.54 and Y = 184,769.00; thence West 8,966.92 feet to a point having Coordinates of X = 2,298,429.62 and Y = 184,769.00; thence North 11,530.34 feet to the point of beginning, containing approximately **1,580.31 acres**, all as more particularly outlined on a plat on file in the Office of Mineral Resources, Department of Natural Resources. All bearings, distances and coordinates are based on Louisiana Coordinate System of 1927, (North or South Zone), where applicable.

NOTE: The above description of the Tract nominated for lease has been provided and corrected, where required, exclusively by the nomination party. Any mineral lease selected from this Tract and awarded by the Louisiana State Mineral and Energy Board shall be without warranty of any kind, either express, implied, or statutory, including, but not limited to, the implied warranties of merchantability and fitness for a particular purpose. Should the mineral lease awarded by the Louisiana State Mineral and Energy Board be subsequently modified, cancelled or abrogated due to the existence of conflicting leases, operating agreements, private claims or other future obligations or conditions which may affect all or any portion of the leased Tract, it shall not relieve the Lessee of the obligation to pay any bonus due thereon to the Louisiana State Mineral and Energy Board, nor shall the Louisiana State Mineral and Energy Board be obligated to refund any consideration paid by the Lessor prior to such modification, cancellation, or abrogation, including, but not limited to, bonuses, rentals and royalties.

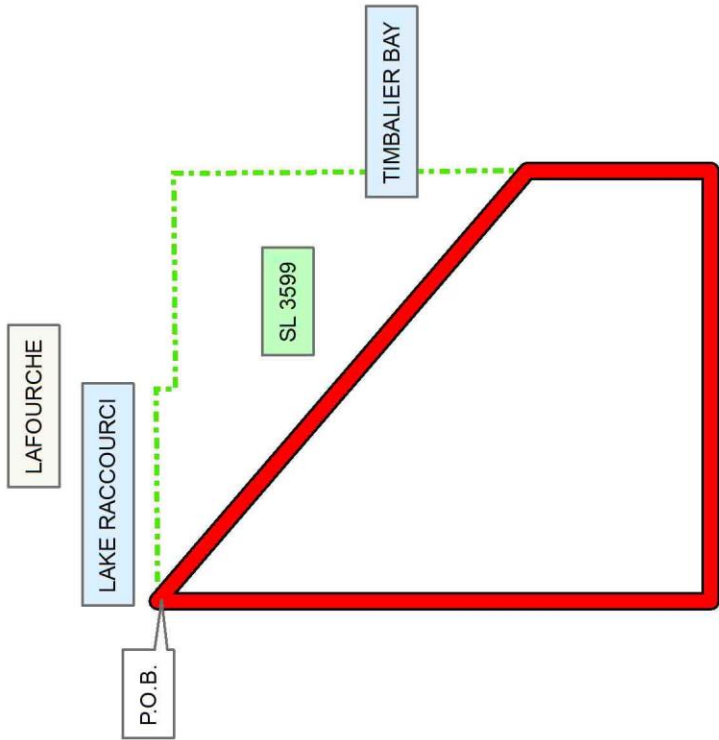
NOTE: The State of Louisiana does hereby reserve, and this lease shall be subject to, the imprescriptible right of surface use in the nature of a servitude in favor of the Department of Natural Resources, including its Offices and Commissions, for the sole purpose of implementing, constructing, servicing and maintaining approved coastal zone management and/or restoration projects. Utilization of any and all rights derived under this lease by the mineral lessee, its agents, successors or assigns, shall not interfere with nor hinder the reasonable surface use by the Department of Natural Resources, its Offices or Commissions, as herein above reserved.

Applicant: LOUISIANA BAYOU OIL & GAS CO.

Bidder	Cash Payment	Price/ Acre	Rental	Oil	Gas	Other

Legend

- 20100002
- Active_Leases
- Counties



TERREBONNE

