

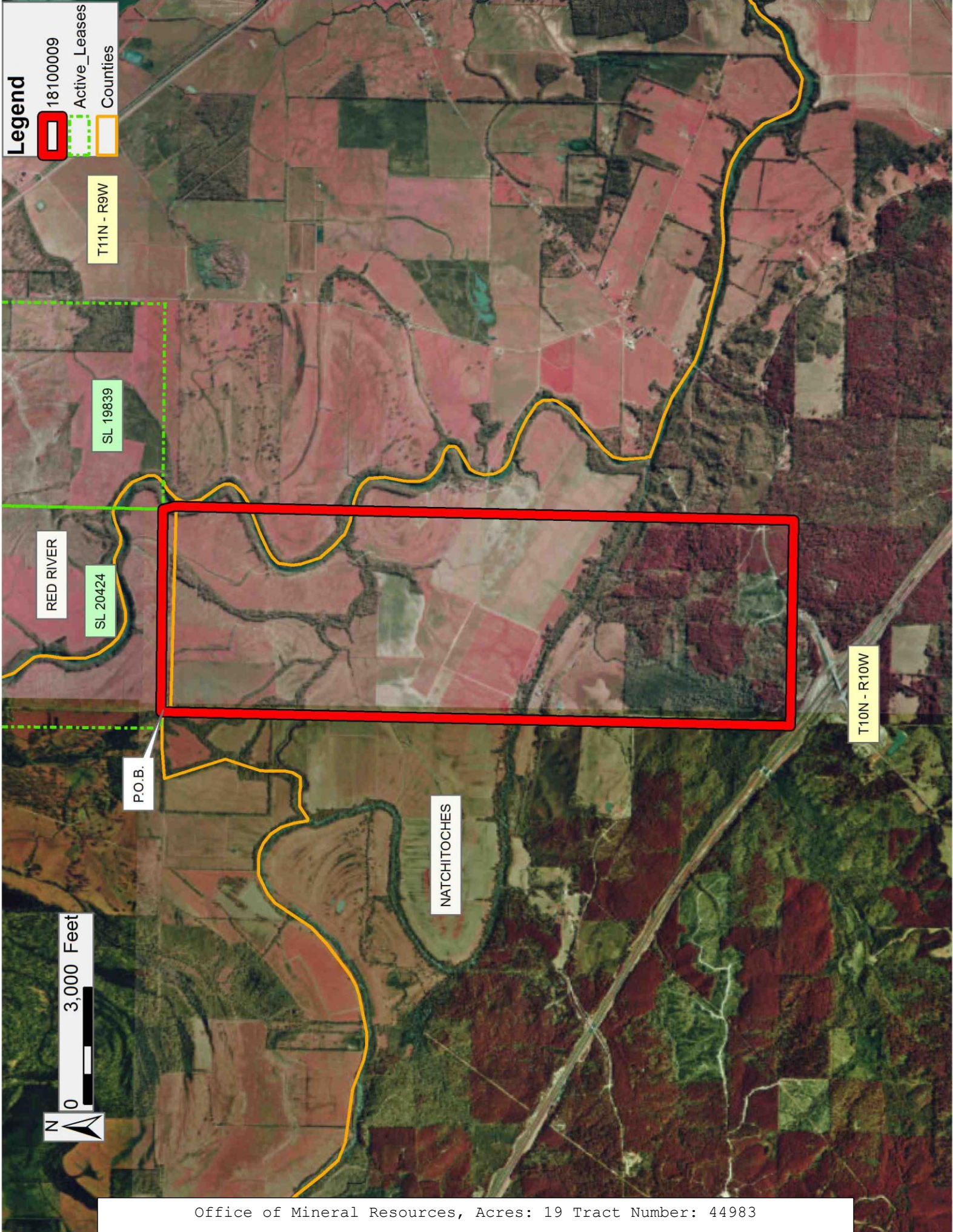
TRACT 44983 - De Soto, Natchitoches and Red River Parishes, Louisiana

All of the lands now or formerly constituting the beds and bottoms of all water bodies of every nature and description as to which title is vested in the State of Louisiana, together with all islands arising therein and other lands formed by accretion or by reliction, where allowed by law, excepting tax adjudicated lands, and not presently under mineral lease on October 10, 2018, situated in De Soto Natchitoches and Red River Parishes, Louisiana, and more particularly described as follows: Beginning at a point on the South boundary of State Lease No. 20424 having Coordinates of X = 1,729,421.79 and Y = 461,670.00; thence along the southern boundary of said State Lease No. 20424 East 5,226.00 feet to its Southeast corner having Coordinates of X = 1,734,647.79 and Y = 461,670.00; thence South 14 degrees 29 minutes 34 seconds East 307.17 feet to a point having Coordinates of X = 1,734,724.66 and Y = 461,372.61; thence South 00 degrees 48 minutes 27 seconds West 5,301.11 feet to a point having Coordinates of X = 1,734,649.96 and Y = 456,072.03; thence South 00 degrees 42 minutes 31 seconds West 10,664.25 feet to a point having Coordinates of X = 1,734,518.07 and Y = 445,408.59; thence North 89 degrees 32 minutes 12 seconds West 5296.73 feet to a point having Coordinates of X = 1,729,221.51 and Y = 445,451.42; thence North 00 degrees 42 minutes 27 seconds East 16,219.81 feet to the point of beginning, containing approximately **19 acres**, all as more particularly outlined on a plat on file in the Office of Mineral Resources, Department of Natural Resources. All bearings, distances and coordinates are based on Louisiana Coordinate System of 1927, (North or South Zone), where applicable.

NOTE: The above description of the Tract nominated for lease has been provided and corrected, where required, exclusively by the nomination party. Any mineral lease selected from this Tract and awarded by the Louisiana State Mineral and Energy Board shall be without warranty of any kind, either express, implied, or statutory, including, but not limited to, the implied warranties of merchantability and fitness for a particular purpose. Should the mineral lease awarded by the Louisiana State Mineral and Energy Board be subsequently modified, cancelled or abrogated due to the existence of conflicting leases, operating agreements, private claims or other future obligations or conditions which may affect all or any portion of the leased Tract, it shall not relieve the Lessee of the obligation to pay any bonus due thereon to the Louisiana State Mineral and Energy Board, nor shall the Louisiana State Mineral and Energy Board be obligated to refund any consideration paid by the Lessor prior to such modification, cancellation, or abrogation, including, but not limited to, bonuses, rentals and royalties.

Applicant: CYPRESS ENERGY CORPORATION

Bidder	Cash Payment	Price/ Acre	Rental	Oil	Gas	Other



TRACT 44984 - Natchitoches and Red River Parishes, Louisiana

All of the lands now or formerly constituting the beds and bottoms of all water bodies of every nature and description as to which title is vested in the State of Louisiana, together with all islands arising therein and other lands formed by accretion or by reliction, where allowed by law, excepting tax adjudicated lands, and not presently under mineral lease on October 10, 2018, situated in Natchitoches and Red River Parishes, Louisiana, and more particularly described as follows: Beginning at a point having Coordinates of X = 1,734,649.96 and Y = 456,072.03; thence South 89 degrees 33 minutes 44 second East 5,297.06 feet to a point having Coordinates of X = 1,739,946.86 and Y = 456,031.56; thence South 00 degrees 42 minutes 31 seconds West 10,694.38 feet to a point having Coordinates of X = 1,739,814.60 and Y = 445,337.99; thence North 89 degrees 14 minutes 11 seconds West 5,297.00 feet to a point having Coordinates of X = 1,734,518.07 and Y = 445,408.59; thence North 00 degrees 42 minutes 31 seconds East 10,664.25 feet to the point of beginning, containing approximately **34 acres**, all as more particularly outlined on a plat on file in the Office of Mineral Resources, Department of Natural Resources. All bearings, distances and coordinates are based on Louisiana Coordinate System of 1927, (North or South Zone), where applicable.

NOTE: The above description of the Tract nominated for lease has been provided and corrected, where required, exclusively by the nomination party. Any mineral lease selected from this Tract and awarded by the Louisiana State Mineral and Energy Board shall be without warranty of any kind, either express, implied, or statutory, including, but not limited to, the implied warranties of merchantability and fitness for a particular purpose. Should the mineral lease awarded by the Louisiana State Mineral and Energy Board be subsequently modified, cancelled or abrogated due to the existence of conflicting leases, operating agreements, private claims or other future obligations or conditions which may affect all or any portion of the leased Tract, it shall not relieve the Lessee of the obligation to pay any bonus due thereon to the Louisiana State Mineral and Energy Board, nor shall the Louisiana State Mineral and Energy Board be obligated to refund any consideration paid by the Lessor prior to such modification, cancellation, or abrogation, including, but not limited to, bonuses, rentals and royalties.

Applicant: CYPRESS ENERGY CORPORATION

Bidder	Cash Payment	Price/ Acre	Rental	Oil	Gas	Other

Legend

18100008

Counties

RED RIVER

T11N - R9W

BAYOU PIERRE

P.O.B.

NATCHITOCHES

T11N - R10W

0 2,000 Feet

N

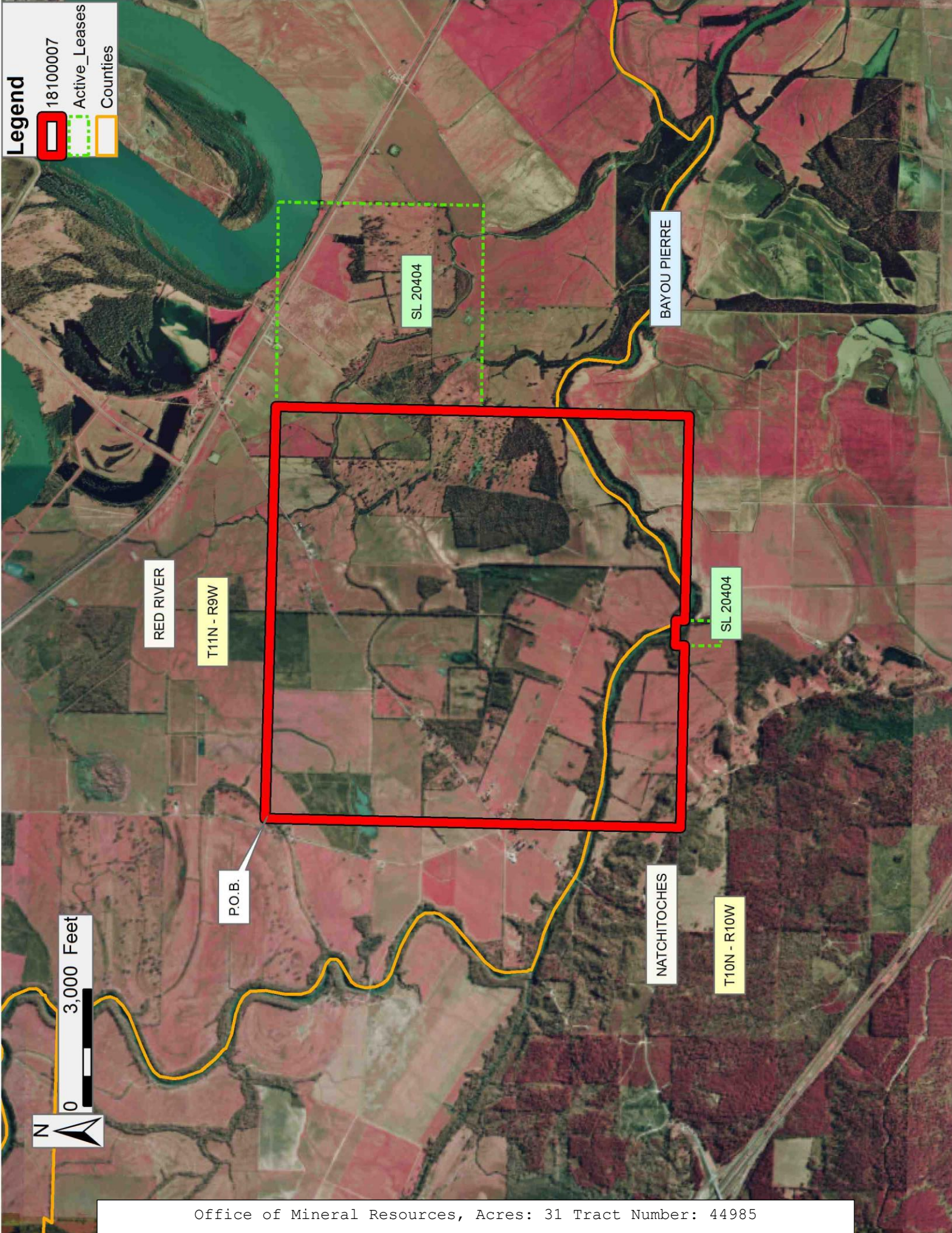
TRACT 44985 - Natchitoches and Red River Parishes, Louisiana

All of the lands now or formerly constituting the beds and bottoms of all water bodies of every nature and description as to which title is vested in the State of Louisiana, together with all islands arising therein and other lands formed by accretion or by reliction, where allowed by law, excepting tax adjudicated lands, and not presently under mineral lease on October 10, 2018, situated in Natchitoches and Red River Parishes, Louisiana, and more particularly described as follows: Beginning at a point having Coordinates of X = 1,739,946.86 and Y = 456,031.56; thence South 89 degrees 02 minutes 28 second East 10,599.45 feet to the Northwest corner of the east portion of State Lease No. 20404, as amended having Coordinates of X = 1,750,544.83 and Y = 455,854.15; thence along the west boundary of said State Lease No. 20404 South 00 degrees 43 minutes 12 seconds West 5,280.00 feet to its Southwest corner having Coordinates of X = 1,750,478.48 and Y = 450,574.56; thence South 00 degrees 45 minutes 17 seconds West 5,348.09 feet to a point having Coordinates of X = 1,750,408.04 and Y = 445,226.93; thence North 89 degrees 23 minutes 58 seconds West 5,261.61 feet to a point on the east boundary of the west portion of State Lease No. 20404, as amended having Coordinates of X = 1,745,146.72 and Y = 445,282.09; thence along the boundaries of said west portion of State Lease No. 20404 the following courses: North 00 degrees 32 minutes 08 seconds East 228.99 feet to a point having Coordinates of X = 1,745,148.86 and Y = 445,511.07, North 88 degrees 55 minutes 35 seconds West 648.98 feet to a point having Coordinates of X = 1,744,500.00 and Y = 445,523.23 and South 234.36 feet to a point having Coordinates of X = 1,744,500.00 and Y = 445,288.87; thence North 89 degrees 23 minutes 58 seconds West 4,685.66 feet to a point having Coordinates of X = 1,739,814.60 and Y = 445,337.99; thence North 00 degrees 42 minutes 31 seconds East 10,694.38 feet to the point of beginning, containing approximately **31 acres**, all as more particularly outlined on a plat on file in the Office of Mineral Resources, Department of Natural Resources. All bearings, distances and coordinates are based on Louisiana Coordinate System of 1927, (North or South Zone), where applicable.

NOTE: The above description of the Tract nominated for lease has been provided and corrected, where required, exclusively by the nomination party. Any mineral lease selected from this Tract and awarded by the Louisiana State Mineral and Energy Board shall be without warranty of any kind, either express, implied, or statutory, including, but not limited to, the implied warranties of merchantability and fitness for a particular purpose. Should the mineral lease awarded by the Louisiana State Mineral and Energy Board be subsequently modified, cancelled or abrogated due to the existence of conflicting leases, operating agreements, private claims or other future obligations or conditions which may affect all or any portion of the leased Tract, it shall not relieve the Lessee of the obligation to pay any bonus due thereon to the Louisiana State Mineral and Energy Board, nor shall the Louisiana State Mineral and Energy Board be obligated to refund any consideration paid by the Lessor prior to such modification, cancellation, or abrogation, including, but not limited to, bonuses, rentals and royalties.

Applicant: CYPRESS ENERGY CORPORATION

Bidder	Cash Payment	Price/ Acre	Rental	Oil	Gas	Other



TRACT 44986 - Lafourche and St. Charles Parishes, Louisiana

All of the lands now or formerly constituting the beds and bottoms of all water bodies of every nature and description as to which title is vested in the State of Louisiana, together with all islands arising therein and other lands formed by accretion or by reliction, where allowed by law, excepting tax adjudicated lands, and not presently under mineral lease on October 10, 2018, situated in Lafourche and St. Charles Parishes, Louisiana, and more particularly described as follows: Beginning at the Southeast corner of State Lease No. 21769 having Coordinates of X = 2,274,358.12 and Y = 424,157.63; thence South 06 degrees 02 minutes 39 seconds East 6,000.99 feet to a point having Coordinates of X = 2,274,990.00 and Y = 418,190.00; thence South 56 degrees 30 minutes 20 seconds West 4,534.39 feet to a point having Coordinates of X = 2,271,208.59 and Y = 415,687.67; thence North 09 degrees 10 minutes 04 seconds West 6,924.14 feet to the Southwest corner of said State Lease No. 21769 having Coordinates of X = 2,270,105.39 and Y = 422,523.36; thence North 68 degrees 58 minutes 44 seconds East 4,555.94 feet along the South line of said State Lease No. 21769 to the point of beginning, (This lease includes only waterbottoms claimed and owned by the state and specifically excludes any land which the state may claim or own and to which the mineral rights are vested in the state), containing approximately **99 acres**, all as more particularly outlined on a plat on file in the Office of Mineral Resources, Department of Natural Resources. All bearings, distances and coordinates are based on Louisiana Coordinate System of 1927, (North or South Zone), where applicable.

NOTE: The above description of the Tract nominated for lease has been provided and corrected, where required, exclusively by the nomination party. Any mineral lease selected from this Tract and awarded by the Louisiana State Mineral and Energy Board shall be without warranty of any kind, either express, implied, or statutory, including, but not limited to, the implied warranties of merchantability and fitness for a particular purpose. Should the mineral lease awarded by the Louisiana State Mineral and Energy Board be subsequently modified, cancelled or abrogated due to the existence of conflicting leases, operating agreements, private claims or other future obligations or conditions which may affect all or any portion of the leased Tract, it shall not relieve the Lessee of the obligation to pay any bonus due thereon to the Louisiana State Mineral and Energy Board, nor shall the Louisiana State Mineral and Energy Board be obligated to refund any consideration paid by the Lessor prior to such modification, cancellation, or abrogation, including, but not limited to, bonuses, rentals and royalties.

NOTE: The State of Louisiana does hereby reserve, and this lease shall be subject to, the imprescriptible right of surface use in the nature of a servitude in favor of the Department of Natural Resources, including its Offices and Commissions, for the sole purpose of implementing, constructing, servicing and maintaining approved coastal zone management and/or restoration projects. Utilization of any and all rights derived under this lease by the mineral lessee, its agents, successors or assigns, shall not

interfere with nor hinder the reasonable surface use by the Department of Natural Resources, its Offices or Commissions, as herein above reserved.

NOTE: A portion of this tract is located on or adjacent to a Louisiana designated Natural and Scenic River. The applicant must obtain authorization from the Louisiana Department of Wildlife and Fisheries, Scenic Rivers Program prior to initiating any activities within or adjacent to the river, including, but not limited to, crossings by roads and pipelines, well sites, production facilities and water withdrawals.

Applicant: ELI EXPLORATION

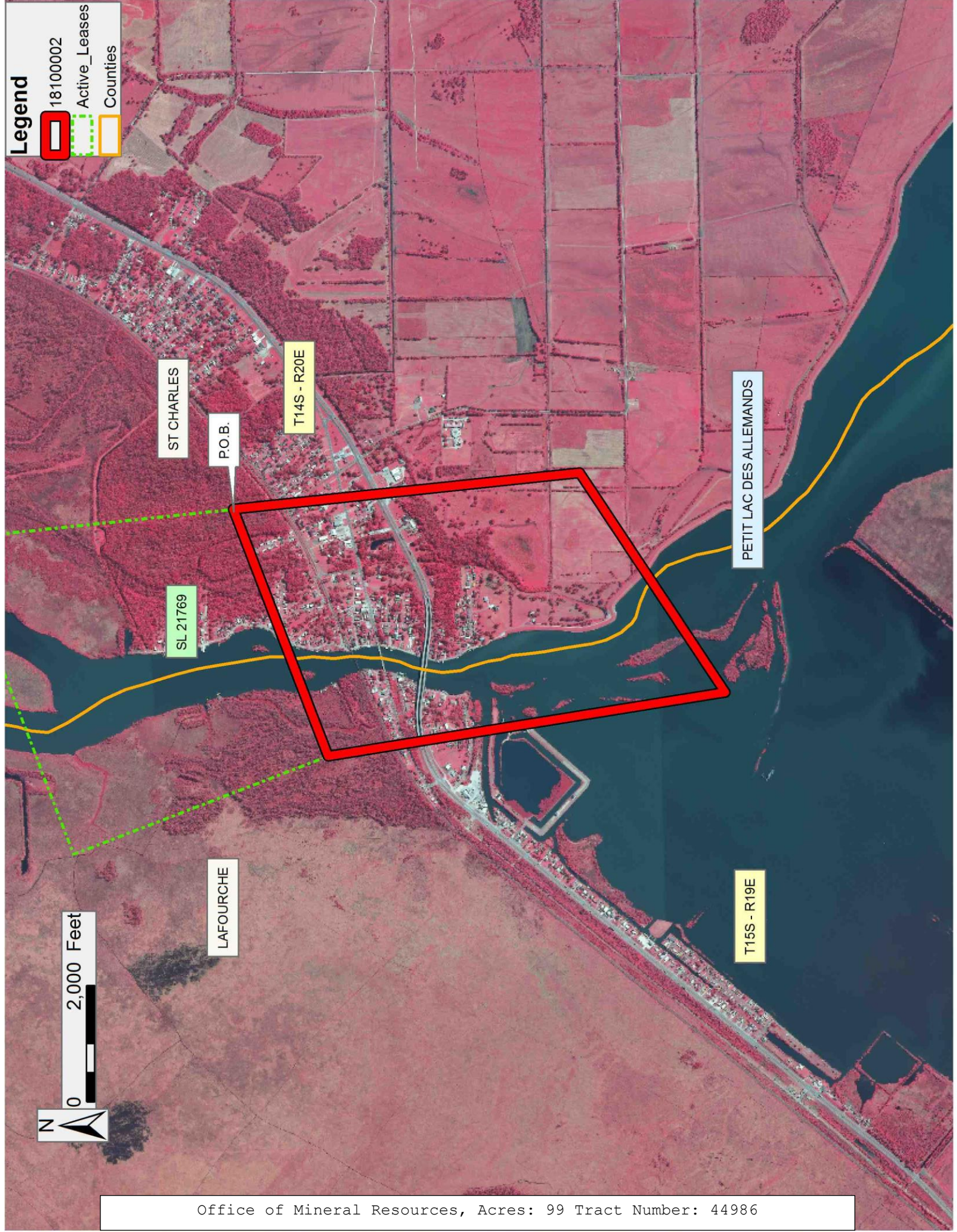
Bidder	Cash Payment	Price/ Acre	Rental	Oil	Gas	Other

Legend

18100002

Active_Leases

Counties



TRACT 44987 - Lafourche and St. Charles Parishes, Louisiana

All of the lands now or formerly constituting the beds and bottoms of all water bodies of every nature and description as to which title is vested in the State of Louisiana, together with all islands arising therein and other lands formed by accretion or by reliction, where allowed by law, excepting tax adjudicated lands, and not presently under mineral lease on October 10, 2018, situated in Lafourche and St. Charles Parishes, Louisiana, and more particularly described as follows: Beginning at a point having Coordinates of X = 2,280,932.72 and Y = 414,606.13; thence South 40 degrees 34 minutes 06 seconds West 7,831.56 feet to a point having Coordinates of X = 2,275,839.43 and Y = 408,657.04; thence North 33 degrees 22 minutes 18 seconds West 8,418.70 feet to a point having Coordinates of X = 2,271,208.59 and Y = 415,687.67; thence North 56 degrees 30 minutes 20 seconds East 4,534.39 feet to a point having Coordinates of X = 2,274,990.00 and Y = 418,190.00; thence South 58 degrees 54 minutes 26 seconds East 6,939.74 feet to the point of beginning, containing approximately **395 acres**, all as more particularly outlined on a plat on file in the Office of Mineral Resources, Department of Natural Resources. All bearings, distances and coordinates are based on Louisiana Coordinate System of 1927, (North or South Zone), where applicable.

NOTE: The above description of the Tract nominated for lease has been provided and corrected, where required, exclusively by the nomination party. Any mineral lease selected from this Tract and awarded by the Louisiana State Mineral and Energy Board shall be without warranty of any kind, either express, implied, or statutory, including, but not limited to, the implied warranties of merchantability and fitness for a particular purpose. Should the mineral lease awarded by the Louisiana State Mineral and Energy Board be subsequently modified, cancelled or abrogated due to the existence of conflicting leases, operating agreements, private claims or other future obligations or conditions which may affect all or any portion of the leased Tract, it shall not relieve the Lessee of the obligation to pay any bonus due thereon to the Louisiana State Mineral and Energy Board, nor shall the Louisiana State Mineral and Energy Board be obligated to refund any consideration paid by the Lessor prior to such modification, cancellation, or abrogation, including, but not limited to, bonuses, rentals and royalties.

NOTE: The State of Louisiana does hereby reserve, and this lease shall be subject to, the imprescriptible right of surface use in the nature of a servitude in favor of the Department of Natural Resources, including its Offices and Commissions, for the sole purpose of implementing, constructing, servicing and maintaining approved coastal zone management and/or restoration projects. Utilization of any and all rights derived under this lease by the mineral lessee, its agents, successors or assigns, shall not interfere with nor hinder the reasonable surface use by the Department of Natural Resources, its Offices or Commissions, as herein above reserved.

NOTE: A portion of this tract is located on or adjacent to a Louisiana designated Natural and Scenic River. The applicant must obtain authorization

from the Louisiana Department of Wildlife and Fisheries, Scenic Rivers Program prior to initiating any activities within or adjacent to the river, including, but not limited to, crossings by roads and pipelines, well sites, production facilities and water withdrawals.

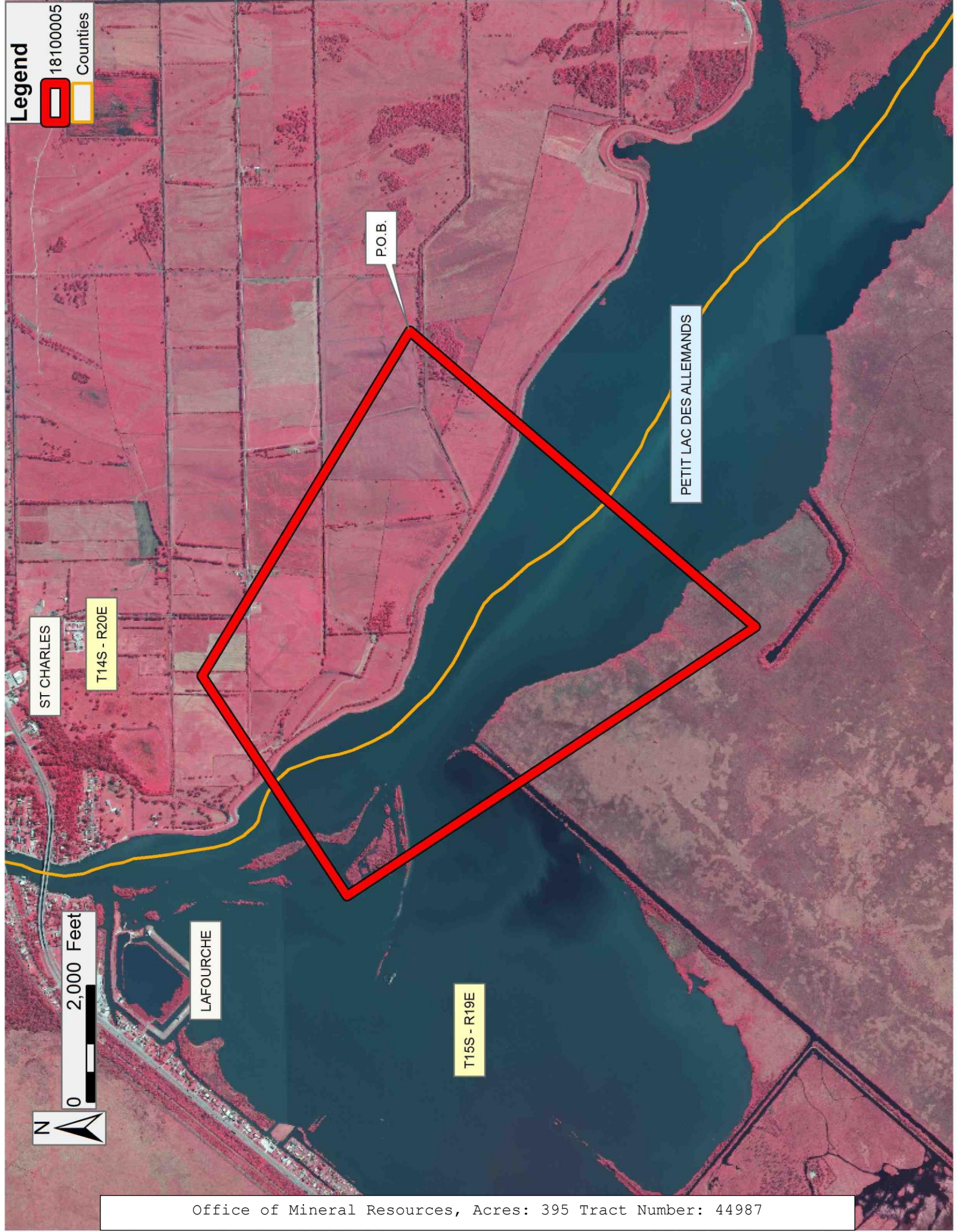
Applicant: ELI EXPLORATION

Bidder	Cash Payment	Price/ Acre	Rental	Oil	Gas	Other

Legend

18100005

Counties



TRACT 44988 - Lafourche and St. Charles Parishes, Louisiana

All of the lands now or formerly constituting the beds and bottoms of all water bodies of every nature and description as to which title is vested in the State of Louisiana, together with all islands arising therein and other lands formed by accretion or by reliction, where allowed by law, excepting tax adjudicated lands, and not presently under mineral lease on October 10, 2018, situated in Lafourche and St. Charles Parishes, Louisiana, and more particularly described as follows: Beginning at a point having Coordinates of X = 2,280,932.72 and Y = 414,606.13; thence South 58 degrees 54 minutes 26 seconds East 7,064.71 feet to a point having Coordinates of X = 2,286,982.46 and Y = 410,957.73; thence South 23 degrees 25 minutes 29 seconds West 7,451.90 feet to a point having Coordinates of X = 2,284,020.00 and Y = 404,120.00; thence North 60 degrees 59 minutes 12 seconds West 9,354.48 feet to a point having Coordinates of X = 2,275,839.43 and Y = 408,657.04; thence North 40 degrees 34 minutes 06 seconds East 7,831.56 feet to the Point of Beginning, containing approximately **795 acres**, all as more particularly outlined on a plat on file in the Office of Mineral Resources, Department of Natural Resources. All bearings, distances and coordinates are based on Louisiana Coordinate System of 1927, (North or South Zone), where applicable.

NOTE: The above description of the Tract nominated for lease has been provided and corrected, where required, exclusively by the nomination party. Any mineral lease selected from this Tract and awarded by the Louisiana State Mineral and Energy Board shall be without warranty of any kind, either express, implied, or statutory, including, but not limited to, the implied warranties of merchantability and fitness for a particular purpose. Should the mineral lease awarded by the Louisiana State Mineral and Energy Board be subsequently modified, cancelled or abrogated due to the existence of conflicting leases, operating agreements, private claims or other future obligations or conditions which may affect all or any portion of the leased Tract, it shall not relieve the Lessee of the obligation to pay any bonus due thereon to the Louisiana State Mineral and Energy Board, nor shall the Louisiana State Mineral and Energy Board be obligated to refund any consideration paid by the Lessor prior to such modification, cancellation, or abrogation, including, but not limited to, bonuses, rentals and royalties.

NOTE: The State of Louisiana does hereby reserve, and this lease shall be subject to, the imprescriptible right of surface use in the nature of a servitude in favor of the Department of Natural Resources, including its Offices and Commissions, for the sole purpose of implementing, constructing, servicing and maintaining approved coastal zone management and/or restoration projects. Utilization of any and all rights derived under this lease by the mineral lessee, its agents, successors or assigns, shall not interfere with nor hinder the reasonable surface use by the Department of Natural Resources, its Offices or Commissions, as herein above reserved.

NOTE: A portion of this tract is located on or adjacent to a Louisiana designated Natural and Scenic River. The applicant must obtain authorization

from the Louisiana Department of Wildlife and Fisheries, Scenic Rivers Program prior to initiating any activities within or adjacent to the river, including, but not limited to, crossings by roads and pipelines, well sites, production facilities and water withdrawals.

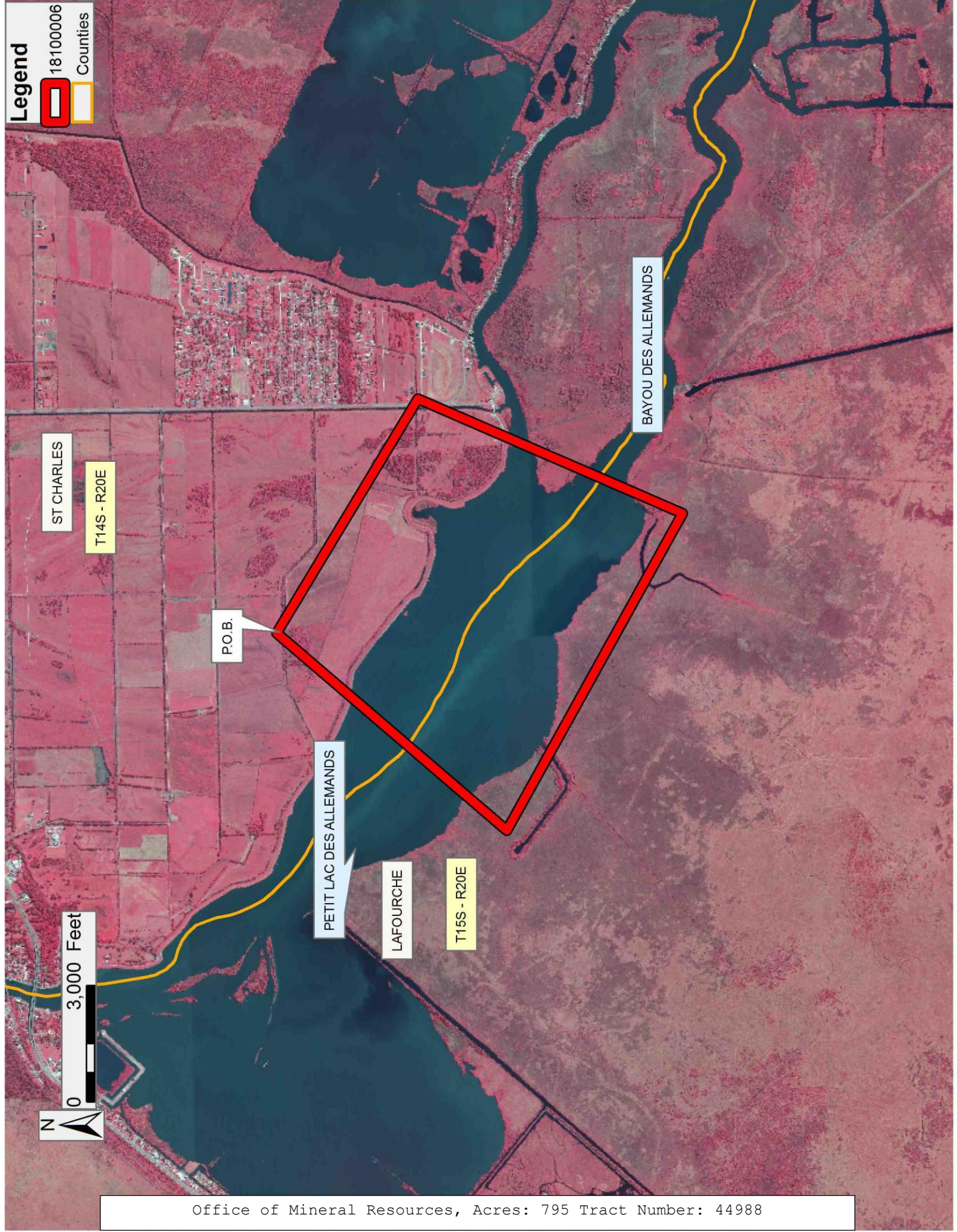
Applicant: ELI EXPLORATION

Bidder	Cash Payment	Price/ Acre	Rental	Oil	Gas	Other

Legend

18100006

Counties



TRACT 44989 - Lafourche and St. Charles Parishes, Louisiana

All of the lands now or formerly constituting the beds and bottoms of all water bodies of every nature and description as to which title is vested in the State of Louisiana, together with all islands arising therein and other lands formed by accretion or by reliction, where allowed by law, excepting tax adjudicated lands, and not presently under mineral lease on October 10, 2018, situated in Lafourche and St. Charles Parishes, Louisiana, and more particularly described as follows: Beginning at a point having Coordinates of X = 2,286,982.46 and Y = 410,957.73; thence South 70 degrees 47 minutes 10 seconds East 10,290.82 feet to a point having Coordinates of X = 2,296,700.05 and Y = 407,571.07; thence Southwesterly approximately 1,735 feet to the Northwest corner of State Lease No. 348, as amended; thence along the boundary of said State Lease No. 348, as amended, the following courses: Southeasterly, Southwesterly, Westerly and Southerly to its Southwest corner; thence Southwesterly approximately 2,309 feet to a point having Coordinates of X = 2,294,644.93 and Y = 400,417.11; thence North 70 degrees 47 minutes 10 seconds West 11,251.69 feet to a point having Coordinates of X = 2,284,020.00 and Y = 404,120.00; thence North 23 degrees 25 minutes 29 seconds East 7,451.90 feet to the point of beginning, containing approximately **327 acres**, all as more particularly outlined on a plat on file in the Office of Mineral Resources, Department of Natural Resources. All bearings, distances and coordinates are based on Louisiana Coordinate System of 1927, (North or South Zone), where applicable.

NOTE: The above description of the Tract nominated for lease has been provided and corrected, where required, exclusively by the nomination party. Any mineral lease selected from this Tract and awarded by the Louisiana State Mineral and Energy Board shall be without warranty of any kind, either express, implied, or statutory, including, but not limited to, the implied warranties of merchantability and fitness for a particular purpose. Should the mineral lease awarded by the Louisiana State Mineral and Energy Board be subsequently modified, cancelled or abrogated due to the existence of conflicting leases, operating agreements, private claims or other future obligations or conditions which may affect all or any portion of the leased Tract, it shall not relieve the Lessee of the obligation to pay any bonus due thereon to the Louisiana State Mineral and Energy Board, nor shall the Louisiana State Mineral and Energy Board be obligated to refund any consideration paid by the Lessor prior to such modification, cancellation, or abrogation, including, but not limited to, bonuses, rentals and royalties.

NOTE: The State of Louisiana does hereby reserve, and this lease shall be subject to, the imprescriptible right of surface use in the nature of a servitude in favor of the Department of Natural Resources, including its Offices and Commissions, for the sole purpose of implementing, constructing, servicing and maintaining approved coastal zone management and/or restoration projects. Utilization of any and all rights derived under this lease by the mineral lessee, its agents, successors or assigns, shall not interfere with nor hinder the reasonable surface use by the Department of Natural Resources, its Offices or Commissions, as herein above reserved.

NOTE: A portion of this tract is located on or adjacent to a Louisiana designated Natural and Scenic River. The applicant must obtain authorization from the Louisiana Department of Wildlife and Fisheries, Scenic Rivers Program prior to initiating any activities within or adjacent to the river, including, but not limited to, crossings by roads and pipelines, well sites, production facilities and water withdrawals.

Applicant: ELI EXPLORATION

Bidder	Cash Payment	Price/ Acre	Rental	Oil	Gas	Other

Legend

18100003

Active_Leases

Counties



ST CHARLES

T15S - R20E

P.O.B.

SL 348

BAYOU DES ALLEMANDS

LAFOURCHE

T15S - R20E

TRACT 44990 - Lafourche and St. Charles Parishes, Louisiana

All of the lands now or formerly constituting the beds and bottoms of all water bodies of every nature and description as to which title is vested in the State of Louisiana, together with all islands arising therein and other lands formed by accretion or by reliction, where allowed by law, excepting tax adjudicated lands, and not presently under mineral lease on October 10, 2018, situated in Lafourche and St. Charles Parishes, Louisiana, and more particularly described as follows: Beginning at a point having Coordinates of X = 2,310,660.00 and Y = 398,214.79; thence South 10,954.79 feet to a point having Coordinates of X = 2,310,660.00 and Y = 387,260.00; thence West 7,370.66 feet to a point having Coordinates of X = 2,303,289.34 and Y = 387,260.00; thence North 10,951.11 feet to a point having Coordinates of X = 2,303,289.34 and Y = 398,211.11; thence Easterly approximately 1,600 feet to the most Southerly Southwest corner of State Lease No. 348, as amended; thence Easterly approximately 748 feet along the South line of said State Lease No. 348, as amended, to its Southeast corner; thence Easterly approximately 5,022 feet to the point of beginning, **LESS AND EXCEPT** that portion, if any, of the above described tract that may lie inside of the boundary of the Salvador Wildlife Management Area, containing approximately **373 acres**, all as more particularly outlined on a plat on file in the Office of Mineral Resources, Department of Natural Resources. All bearings, distances and coordinates are based on Louisiana Coordinate System of 1927, (North or South Zone), where applicable.

NOTE: The above description of the Tract nominated for lease has been provided and corrected, where required, exclusively by the nomination party. Any mineral lease selected from this Tract and awarded by the Louisiana State Mineral and Energy Board shall be without warranty of any kind, either express, implied, or statutory, including, but not limited to, the implied warranties of merchantability and fitness for a particular purpose. Should the mineral lease awarded by the Louisiana State Mineral and Energy Board be subsequently modified, cancelled or abrogated due to the existence of conflicting leases, operating agreements, private claims or other future obligations or conditions which may affect all or any portion of the leased Tract, it shall not relieve the Lessee of the obligation to pay any bonus due thereon to the Louisiana State Mineral and Energy Board, nor shall the Louisiana State Mineral and Energy Board be obligated to refund any consideration paid by the Lessor prior to such modification, cancellation, or abrogation, including, but not limited to, bonuses, rentals and royalties.

NOTE: The State of Louisiana does hereby reserve, and this lease shall be subject to, the imprescriptible right of surface use in the nature of a servitude in favor of the Department of Natural Resources, including its Offices and Commissions, for the sole purpose of implementing, constructing, servicing and maintaining approved coastal zone management and/or restoration projects. Utilization of any and all rights derived under this lease by the mineral lessee, its agents, successors or assigns, shall not interfere with nor hinder the reasonable surface use by the Department of Natural Resources, its Offices or Commissions, as herein above reserved.

NOTE: A portion of this tract is located on or adjacent to a Louisiana designated Natural and Scenic River. The applicant must obtain authorization from the Louisiana Department of Wildlife and Fisheries, Scenic Rivers Program prior to initiating any activities within or adjacent to the river, including, but not limited to, crossings by roads and pipelines, well sites, production facilities and water withdrawals.

Applicant: ELI EXPLORATION

Bidder	Cash Payment	Price/ Acre	Rental	Oil	Gas	Other

