

TRACT 44405 - Lafourche Parish, Louisiana

All of the lands now or formerly constituting the beds and bottoms of all water bodies of every nature and description as to which title is vested in the State of Louisiana, together with all islands arising therein and other lands formed by accretion or by reliction, where allowed by law, excepting tax adjudicated lands, and not presently under mineral lease on October 14, 2015, situated in Lafourche Parish, Louisiana, and more particularly described as follows: Beginning at the Southwest corner of State Lease No. 20783 having Coordinates of X = 2,336,743.05 and Y = 204,032.99; thence South 7,914.94 feet to a point having Coordinates of X = 2,336,743.05 and Y = 196,118.05; thence West 12,418.79 feet to the Southeast corner of State Lease No. 14589, as amended, having Coordinates of X = 2,324,324.27 and Y = 196,118.04; thence North 7,914.94 feet along the Eastern boundary of said State Lease No. 14589 to a point having Coordinates of X = 2,324,324.27 and Y = 204,032.99; thence East 12,418.79 feet to the point of beginning, **LESS AND EXCEPT** any Vacant State Lands, being lands which are not currently beds or bottoms of water bodies, and which have not been severed from the ownership of the State of Louisiana; such excepted Vacant State Lands being portions of Lots 1 and 2, Section 1, Township 22 South, Range 21 East, Louisiana Meridian, situated in Lafourche Parish, Louisiana, as depicted on Sheet 1 (of 6 Sheets) of the survey prepared by Norville E. Shearer, approved by the United States Department of the Interior Bureau of Land Management on June 18, 1959, covering lands transferred to the State of Louisiana pursuant to the Swamp Lands Acts of March 2, 1849 and September 30, 1850, containing approximately **2,223 acres**, all as more particularly outlined on a plat on file in the Office of Mineral Resources, Department of Natural Resources. All bearings, distances and coordinates are based on Louisiana Coordinate System of 1927, (North or South Zone), where applicable.

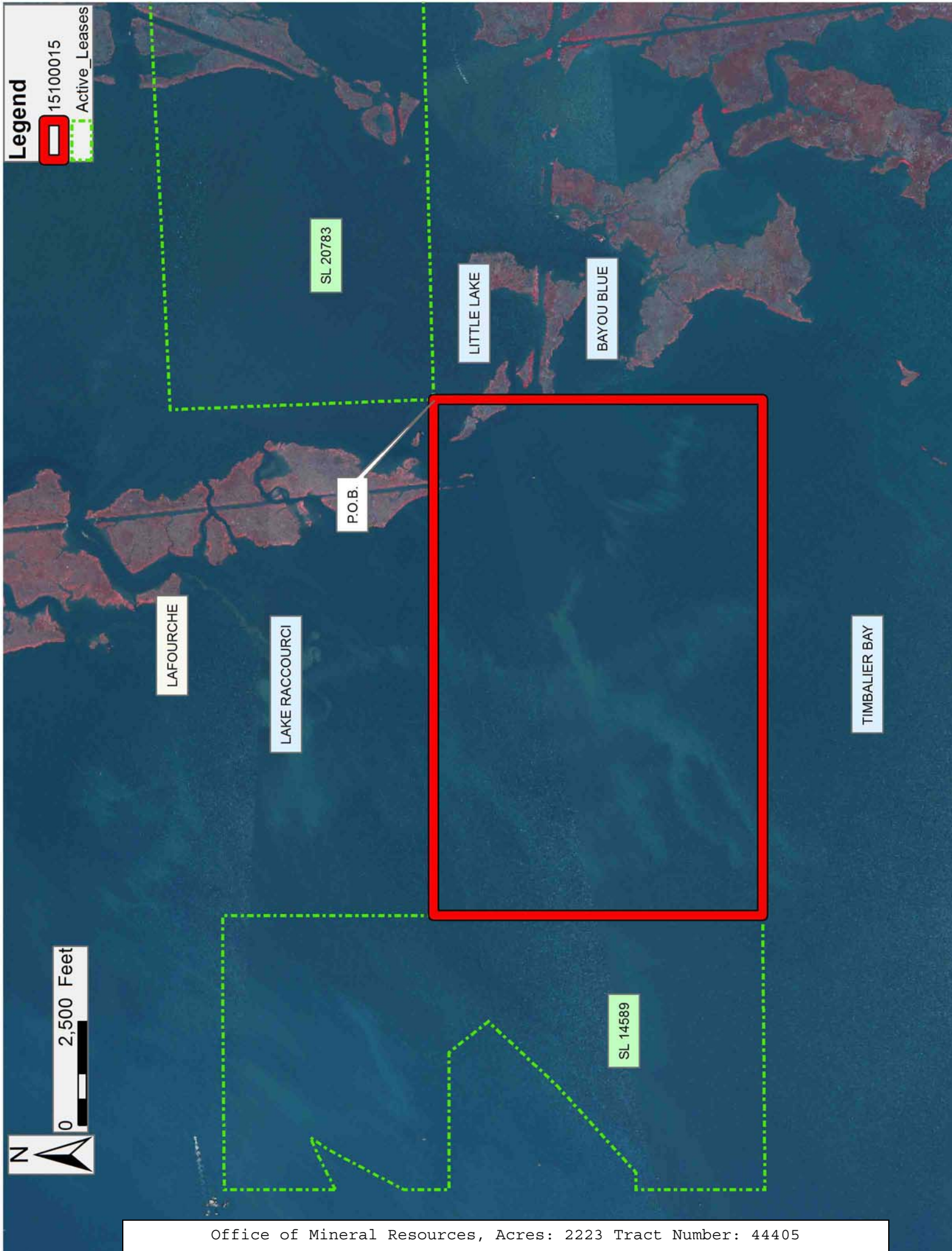
NOTE: The above description of the Tract nominated for the purpose of acquiring a mineral lease or a geophysical agreement has been provided and corrected, where required, exclusively by the nominating party. Any mineral lease or geophysical agreement selected from this Tract and awarded by the Louisiana State Mineral and Energy Board shall be without warranty of any kind, either express, implied or statutory including, but not limited to, title or the implied warranties of merchantability and fitness for a particular purpose.

An error or omission in the nominating party's Tract description may require that a State mineral lease or geophysical agreement be modified, canceled or abrogated due to the existence of conflicting leases, operating agreements, private claims or other future obligations or conditions within the Tract described. In such case, however, the Louisiana State Mineral and Energy Board shall not be obligated to refund any consideration paid by the Lessee prior to such modification, cancellation or abrogation including, but not limited to, bonuses, rentals and royalties.

NOTE: The State of Louisiana does hereby reserve, and this lease shall be subject to, the imprescriptible right of surface use in the nature of a servitude in favor of the Department of Natural Resources, including its Offices and Commissions, for the sole purpose of implementing, constructing, servicing and maintaining approved coastal zone management and/or restoration projects. Utilization of any and all rights derived under this lease by the mineral lessee, its agents, successors or assigns, shall not interfere with nor hinder the reasonable surface use by the Department of Natural Resources, its Offices or Commissions, as herein above reserved.

Applicant: THEOPHILUS OIL, GAS & LAND SERVICES, LLC

Bidder	Cash Payment	Price/ Acre	Rental	Oil	Gas	Other



TRACT 44406 - Lafourche Parish, Louisiana

All of the lands now or formerly constituting the beds and bottoms of all water bodies of every nature and description as to which title is vested in the State of Louisiana, together with all islands arising therein and other lands formed by accretion or by reliction, where allowed by law, excepting tax adjudicated lands, and not presently under mineral lease on October 14, 2015, situated in Lafourche Parish, Louisiana, and more particularly described as follows: Beginning at the Southwest corner of State Lease No. 20783 having Coordinates of X = 2,336,743.05 and Y = 204,032.99; thence North 88 degrees 32 minutes 02 seconds East 9,253.03 feet along the Southern boundary of said State Lease No. 20783 to a point having Coordinates of X = 2,345,993.05 and Y = 204,269.74; thence South 8,151.69 feet to a point having Coordinates of X = 2,345,993.05 and Y = 196,118.05; thence West 9,250.00 feet to a point having Coordinates of X = 2,336,743.05 and Y = 196,118.05; thence North 7,914.94 feet to the point of beginning, **LESS AND EXCEPT** any Vacant State Lands, being lands which are currently still in existence and which have not been severed from the ownership of the State of Louisiana; such excepted Vacant State Lands being portions of Lots 1 and 2, Section 1, Township 22 South, Range 21 East, Louisiana Meridian, situated in Lafourche Parish, Louisiana, as depicted on Sheet 1 (of 6 Sheets) of the survey prepared by Norville E. Shearer, approved by the United States Department of the Interior Bureau of Land Management on June 18, 1959, covering lands transferred to the State of Louisiana pursuant to the Swamp Lands Acts of March 2, 1849 and September 30, 1850, containing approximately **1,033 acres**, all as more particularly outlined on a plat on file in the Office of Mineral Resources, Department of Natural Resources. All bearings, distances and coordinates are based on Louisiana Coordinate System of 1927, (North or South Zone), where applicable.

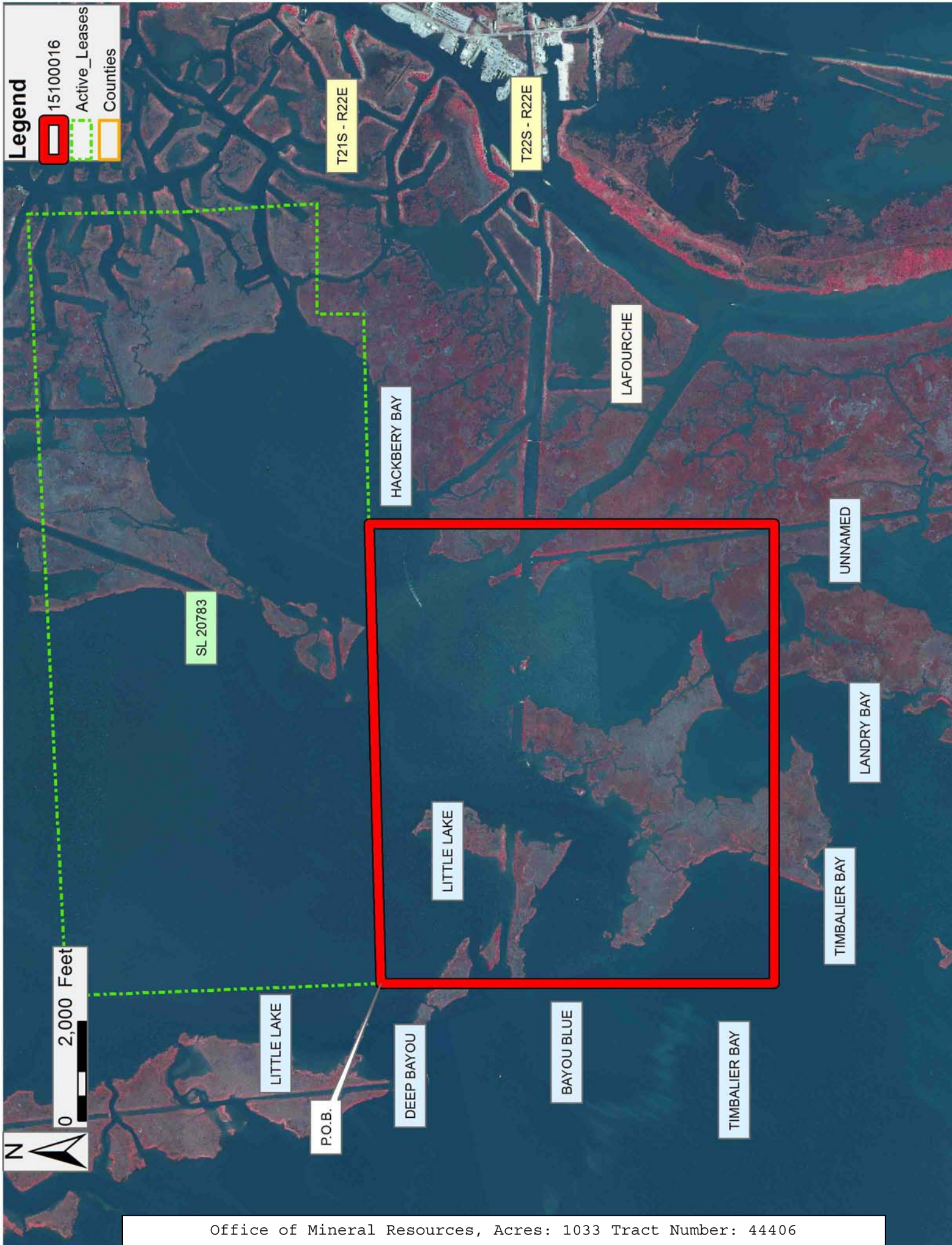
NOTE: The above description of the Tract nominated for the purpose of acquiring a mineral lease or a geophysical agreement has been provided and corrected, where required, exclusively by the nominating party. Any mineral lease or geophysical agreement selected from this Tract and awarded by the Louisiana State Mineral and Energy Board shall be without warranty of any kind, either express, implied or statutory including, but not limited to, title or the implied warranties of merchantability and fitness for a particular purpose.

An error or omission in the nominating party's Tract description may require that a State mineral lease or geophysical agreement be modified, canceled or abrogated due to the existence of conflicting leases, operating agreements, private claims or other future obligations or conditions within the Tract described. In such case, however, the Louisiana State Mineral and Energy Board shall not be obligated to refund any consideration paid by the Lessee prior to such modification, cancellation or abrogation including, but not limited to, bonuses, rentals and royalties.

NOTE: The State of Louisiana does hereby reserve, and this lease shall be subject to, the imprescriptible right of surface use in the nature of a servitude in favor of the Department of Natural Resources, including its Offices and Commissions, for the sole purpose of implementing, constructing, servicing and maintaining approved coastal zone management and/or restoration projects. Utilization of any and all rights derived under this lease by the mineral lessee, its agents, successors or assigns, shall not interfere with nor hinder the reasonable surface use by the Department of Natural Resources, its Offices or Commissions, as herein above reserved.

Applicant: THEOPHILUS OIL, GAS & LAND SERVICES, LLC

Bidder	Cash Payment	Price/ Acre	Rental	Oil	Gas	Other



TRACT 44407 - Lafourche Parish, Louisiana

All of the lands now or formerly constituting the beds and bottoms of all water bodies of every nature and description as to which title is vested in the State of Louisiana, together with all islands arising therein and other lands formed by accretion or by reliction, where allowed by law, excepting tax adjudicated lands, and not presently under mineral lease on October 14, 2015, situated in Lafourche Parish, Louisiana, and more particularly described as follows: Beginning at a point on the East boundary of State Lease No. 1480, as amended, and a point on the West boundary of State Lease No. 14589, having Coordinates of X = 2,317,736.09 and Y = 199,161.00; thence North 4,500.00 feet along the East boundary of said State Lease No. 1480 to a point located on an interior corner of State Lease No. 14589 having Coordinates of X = 2,317,736.09 and Y = 203,661.00; thence along the boundary of said State Lease No. 14589 the following courses and distances: East 3,300.00 feet to a point having Coordinates of X = 2,321,036.09 and Y = 203,661.00, South 38 degrees 00 minutes 00 seconds East 1,200.00 feet to a point having Coordinates of X = 2,321,774.88 and Y = 202,715.39; South 43 degrees 00 minutes 00 seconds West 2,250.01 feet to a point having Coordinates of X = 2,320,240.38 and Y = 201,069.84, South 47 degrees 47 minutes 18 seconds West 2,841.08 feet to a point having Coordinates of X = 2,318,136.09 and Y = 199,161.00 and West 400.00 feet to the point of beginning, containing approximately **266.88 acres**, all as more particularly outlined on a plat on file in the Office of Mineral Resources, Department of Natural Resources. All bearings, distances and coordinates are based on Louisiana Coordinate System of 1927, (North or South Zone), where applicable.

NOTE: The above description of the Tract nominated for the purpose of acquiring a mineral lease or a geophysical agreement has been provided and corrected, where required, exclusively by the nominating party. Any mineral lease or geophysical agreement selected from this Tract and awarded by the Louisiana State Mineral and Energy Board shall be without warranty of any kind, either express, implied or statutory including, but not limited to, title or the implied warranties of merchantability and fitness for a particular purpose.

An error or omission in the nominating party's Tract description may require that a State mineral lease or geophysical agreement be modified, canceled or abrogated due to the existence of conflicting leases, operating agreements, private claims or other future obligations or conditions within the Tract described. In such case, however, the Louisiana State Mineral and Energy Board shall not be obligated to refund any consideration paid by the Lessee prior to such modification, cancellation or abrogation including, but not limited to, bonuses, rentals and royalties.

NOTE: The State of Louisiana does hereby reserve, and this lease shall be subject to, the imprescriptible right of surface use in the nature of a servitude in favor of the Department of Natural Resources, including its

Offices and Commissions, for the sole purpose of implementing, constructing, servicing and maintaining approved coastal zone management and/or restoration projects. Utilization of any and all rights derived under this lease by the mineral lessee, its agents, successors or assigns, shall not interfere with nor hinder the reasonable surface use by the Department of Natural Resources, its Offices or Commissions, as herein above reserved.

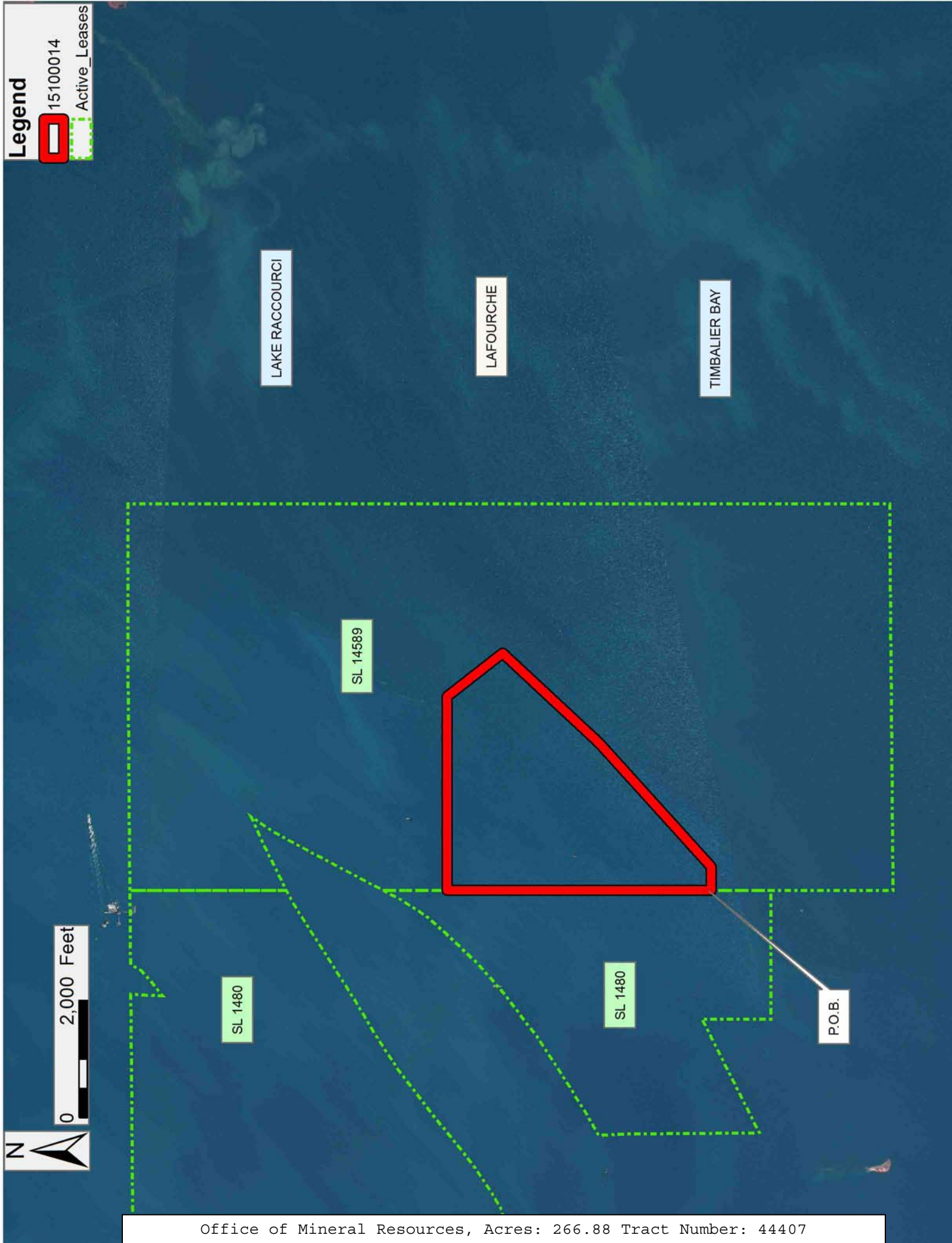
Applicant: THEOPHILUS OIL, GAS & LAND SERVICES, LLC

Bidder	Cash Payment	Price/ Acre	Rental	Oil	Gas	Other

Legend

 15100014

 Active_Leases



TRACT 44408 - Lafourche and Terrebonne Parishes, Louisiana

All of the lands now or formerly constituting the beds and bottoms of all water bodies of every nature and description as to which title is vested in the State of Louisiana, together with all islands arising therein and other lands formed by accretion or by reliction, where allowed by law, excepting tax adjudicated lands, and not presently under mineral lease on October 14, 2015, situated in Lafourche and Terrebonne Parishes, Louisiana, and more particularly described as follows: Beginning at a point on the boundary of State Lease No. 20892, as amended, having Coordinates of X = 2,298,501.97 and Y = 202,740.30; thence South 89 degrees 35 minutes 13 seconds East 7,579.20 feet to a point on Western boundary of the Northern portion of State Lease No. 1480, as amended, having Coordinates of X = 2,306,080.98 and Y = 202,685.67; thence South 01 degrees 00 minutes 00 seconds East 911.36 feet along said boundary of said northern portion of said State Lease No. 1480 having Coordinates of X = 2,306,096.88 and Y = 201,774.45; thence South 4,252.68 feet to a point on the Northern boundary of the Southern portion of said State Lease No. 1480, having Coordinates of X = 2,306,096.89 and Y = 197,521.77; thence along said boundary of said State Lease No. 1480, the following courses and distances: South 77 degrees 05 minutes 33 seconds West 145.74 feet to a point having Coordinates of X = 2,305,954.83 and Y = 197,489.21, South 68 degrees 11 minutes 55 seconds West 851.54 feet to a point having Coordinates of X = 2,305,164.20 and Y = 197,172.96, South 64 degrees 51 minutes 19 seconds West 713.27 feet to a point having Coordinates of X = 2,304,518.52 and Y = 196,869.88, South 63 degrees 06 minutes 14 seconds West 901.62 feet to a point having Coordinates of X = 2,303,714.43 and Y = 196,462.01 and South 00 degrees 29 minutes 42 seconds East 522.02 feet to a point on the Northern boundary of State Lease No. 3599, as amended, having Coordinates of X = 2,303,718.94 and Y = 195,940.02; thence along said boundary of said State Lease No. 3599 the following courses and distances: South 89 degrees 30 minutes 20 seconds West 870.00 feet to a point having Coordinates of X = 2,302,848.97 and Y = 195,932.51, North 00 degrees 29 minutes 43 seconds West 405.00 feet to a point having Coordinates of X = 2,302,845.47 and Y = 196,337.49 and South 89 degrees 30 minutes 18 seconds West 4,416.01 feet to its Northwest corner, also being the Southeast corner of State Lease Nos. 3278 and 3723, as amended, having Coordinates of X = 2,298,429.62 and Y = 196,299.34; thence along said boundary of said State Lease Nos. 3278 and 3723 the following courses and distances: North 5,000.00 feet to a point having Coordinates of X = 2,298,429.62 and Y = 201,299.34 and West 4,225.00 feet to a point on the boundary of State Lease No. 20892, as amended, having Coordinates of X = 2,294,204.62 and Y = 201,299.35; thence North 71 degrees 27 minutes 47 seconds East 4,532.50 feet to the point of beginning, containing approximately **1,162.65 acres**, all as more particularly outlined on a plat on file in the Office of Mineral Resources, Department of Natural Resources. All bearings, distances and coordinates are based on Louisiana Coordinate System of 1927, (North or South Zone), where applicable.

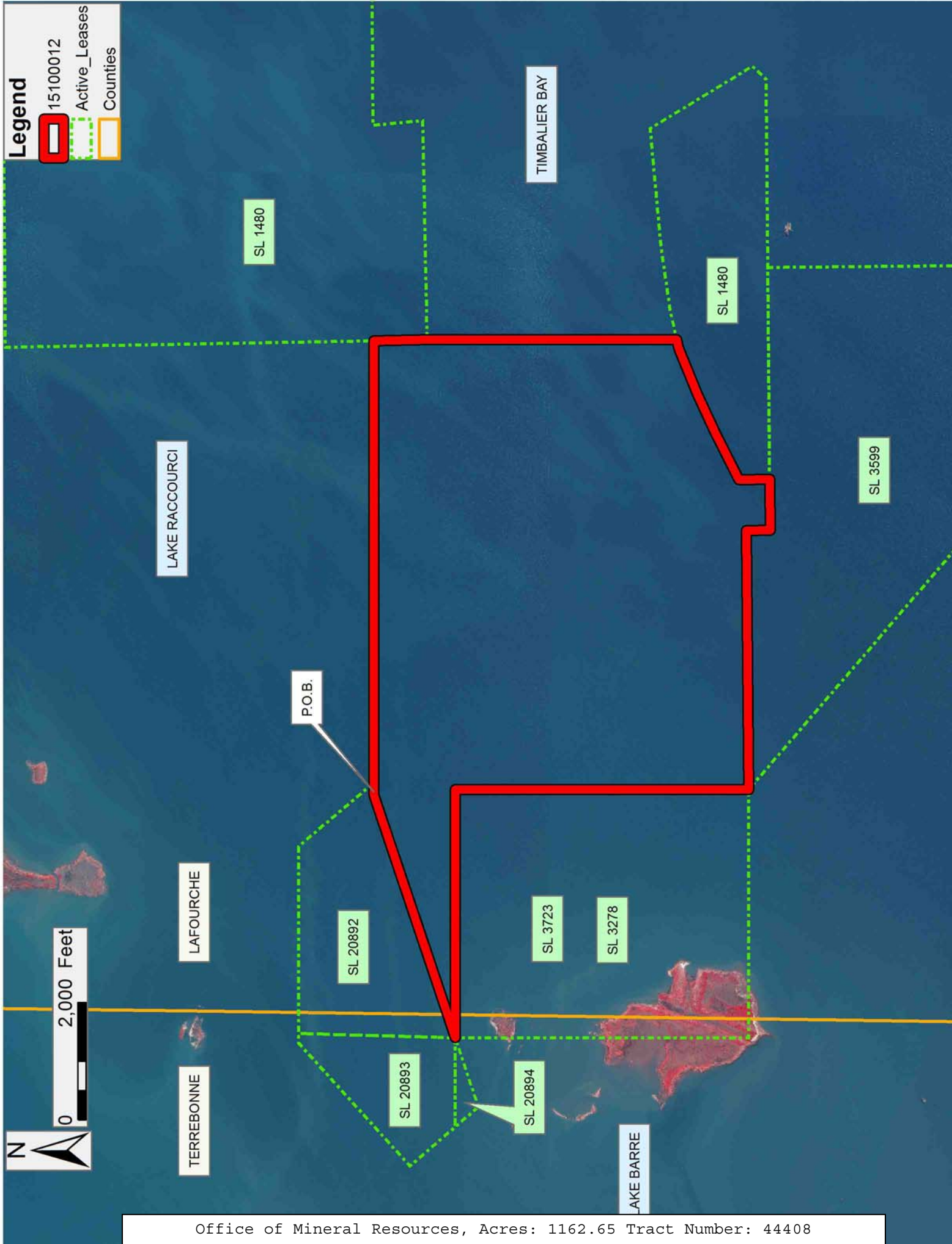
NOTE: The above description of the Tract nominated for the purpose of acquiring a mineral lease or a geophysical agreement has been provided and corrected, where required, exclusively by the nominating party. Any mineral lease or geophysical agreement selected from this Tract and awarded by the Louisiana State Mineral and Energy Board shall be without warranty of any kind, either express, implied or statutory including, but not limited to, title or the implied warranties of merchantability and fitness for a particular purpose.

An error or omission in the nominating party's Tract description may require that a State mineral lease or geophysical agreement be modified, canceled or abrogated due to the existence of conflicting leases, operating agreements, private claims or other future obligations or conditions within the Tract described. In such case, however, the Louisiana State Mineral and Energy Board shall not be obligated to refund any consideration paid by the Lessee prior to such modification, cancellation or abrogation including, but not limited to, bonuses, rentals and royalties.

NOTE: The State of Louisiana does hereby reserve, and this lease shall be subject to, the imprescriptible right of surface use in the nature of a servitude in favor of the Department of Natural Resources, including its Offices and Commissions, for the sole purpose of implementing, constructing, servicing and maintaining approved coastal zone management and/or restoration projects. Utilization of any and all rights derived under this lease by the mineral lessee, its agents, successors or assigns, shall not interfere with nor hinder the reasonable surface use by the Department of Natural Resources, its Offices or Commissions, as herein above reserved.

Applicant: THEOPHILUS OIL, GAS & LAND SERVICES, LLC

Bidder	Cash Payment	Price/Acre	Rental	Oil	Gas	Other



TRACT 44409 - Terrebonne Parish, Louisiana

All of the lands now or formerly constituting the beds and bottoms of all water bodies of every nature and description as to which title is vested in the State of Louisiana, together with all islands arising therein and other lands formed by accretion or by reliction, where allowed by law, excepting tax adjudicated lands, and not presently under mineral lease on October 14, 2015, situated in Terrebonne Parish, Louisiana, and more particularly described as follows: Beginning at a point on the boundary of State Lease No. 199, as amended, having Coordinates of X = 2,284,288.43 and Y = 197,017.02; thence East approximately 9,916 feet to a point on the Western boundary of State Lease Nos. 3278 and 3723, as amended, having a Coordinate of Y = 197,017.02; thence South approximately 718 feet along said boundary of said State Lease Nos. 3278 and 3723 to their Southwest corner, having a Coordinate of X = 2,294,204.62; thence South approximately 8,915 feet to a point having Coordinates of X = 2,294,204.62 and Y = 187,384.62; thence Westerly approximately 6,184 feet to a point on the boundary of Special Section 16; thence along the boundary of said Special Section 16 the following courses and distances: Northerly approximately 1,763 feet and Westerly approximately 6,733 feet to a point on said boundary of said State Lease No. 199, having Coordinates of X = 2,281,289.31 and Y = 189,103.25; thence along the boundary of said State Lease No. 199 the following courses and distances: North 913.33 feet to a point having Coordinates of X = 2,281,289.31 and Y = 190,016.58, South 89 degrees 34 minutes 50 seconds West 2,600.00 feet to a point having Coordinates of X = 2,278,689.37 and Y = 189,997.55, North 00 degrees 25 minutes 10 seconds West 600.00 feet to a point having Coordinates of X = 2,278,684.98 and Y = 190,597.53, South 89 degrees 34 minutes 50 seconds West 1,023.22 feet to a point having Coordinates of X = 2,277,661.79 and Y = 190,590.04, North 00 degrees 25 minutes 10 seconds West 1,349.34 feet to a point having Coordinates of X = 2,277,651.91 and Y = 191,939.35, North 89 degrees 34 minutes 50 seconds East 2,220.03 feet to a point having Coordinates of X = 2,279,871.88 and Y = 191,955.60, North 00 degrees 25 minutes 10 seconds West 2,140.16 feet to a point having Coordinates of X = 2,279,856.21 and Y = 194,095.70, North 89 degrees 34 minutes 50 seconds East 453.49 feet to a point having Coordinates of X = 2,280,309.69 and Y = 194,099.02, South 00 degrees 25 minutes 10 seconds East 1,111.20 feet to a point having Coordinates of X = 2,280,317.82 and Y = 192,987.85, North 89 degrees 34 minutes 50 seconds East 4,000.00 feet to a point having Coordinates of X = 2,284,317.72 and Y = 193,017.13, and North 00 degrees 25 minutes 10 seconds West 4,000.00 feet to the point of beginning, **LESS AND EXCEPT** any Vacant Sate Lands, being lands which are not currently beds or bottoms of water bodies, and which have not been severed from the ownership of the State of Louisiana; such excepted Vacant State Lands being portions of Lots 1 and 2, Section 34, Township 21 South, Range 20 East, Louisiana Meridian, situated in Lafourche Parish, Louisiana, as depicted on Sheet 2 (of 2 sheets) of the survey prepared by Norville E. Shearer, approved by the United States Department of the Interior Bureau of Land Management on June 18, 1959, covering lands transferred to the State of Louisiana pursuant to the Swamp Lands Acts of March 2, 1849 and

September 30, 1850, containing approximately **2,496 acres**, all as more particularly outlined on a plat on file in the Office of Mineral Resources, Department of Natural Resources. All bearings, distances and coordinates are based on Louisiana Coordinate System of 1927, (North or South Zone), where applicable.

NOTE: The above description of the Tract nominated for the purpose of acquiring a mineral lease or a geophysical agreement has been provided and corrected, where required, exclusively by the nominating party. Any mineral lease or geophysical agreement selected from this Tract and awarded by the Louisiana State Mineral and Energy Board shall be without warranty of any kind, either express, implied or statutory including, but not limited to, title or the implied warranties of merchantability and fitness for a particular purpose.


An error or omission in the nominating party's Tract description may require that a State mineral lease or geophysical agreement be modified, canceled or abrogated due to the existence of conflicting leases, operating agreements, private claims or other future obligations or conditions within the Tract described. In such case, however, the Louisiana State Mineral and Energy Board shall not be obligated to refund any consideration paid by the Lessee prior to such modification, cancellation or abrogation including, but not limited to, bonuses, rentals and royalties.


NOTE: The State of Louisiana does hereby reserve, and this lease shall be subject to, the imprescriptible right of surface use in the nature of a servitude in favor of the Department of Natural Resources, including its Offices and Commissions, for the sole purpose of implementing, constructing, servicing and maintaining approved coastal zone management and/or restoration projects. Utilization of any and all rights derived under this lease by the mineral lessee, its agents, successors or assigns, shall not interfere with nor hinder the reasonable surface use by the Department of Natural Resources, its Offices or Commissions, as herein above reserved.


Applicant: THEOPHILUS OIL, GAS & LAND SERVICES, LLC

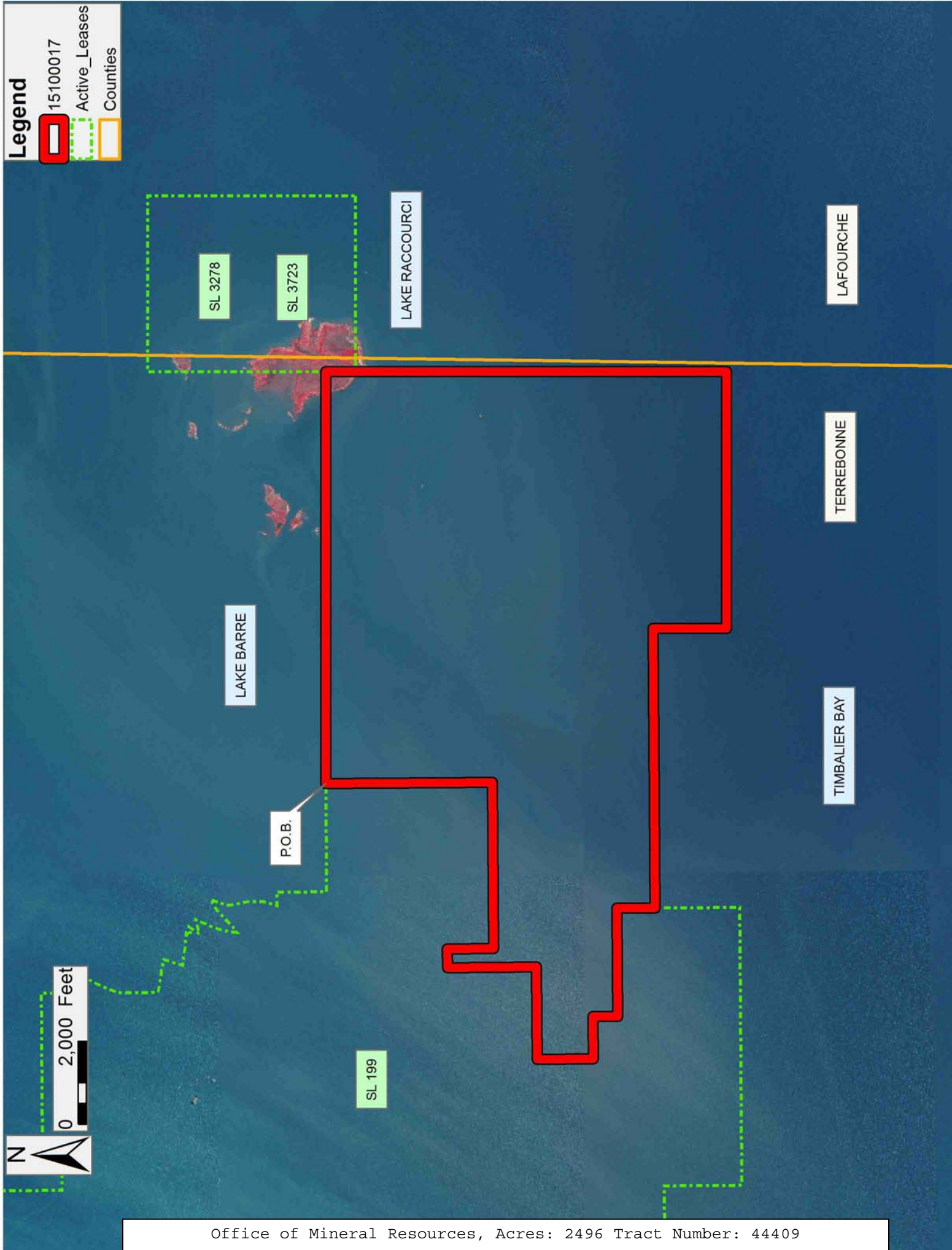
Bidder	Cash Payment	Price/ Acre	Rental	Oil	Gas	Other

Legend


15100017


Active_Leases


Counties



TRACT 44410 - Lafourche and Terrebonne Parishes, Louisiana

All of the lands now or formerly constituting the beds and bottoms of all water bodies of every nature and description as to which title is vested in the State of Louisiana, together with all islands arising therein and other lands formed by accretion or by reliction, where allowed by law, excepting tax adjudicated lands, and not presently under mineral lease on October 14, 2015, situated in Lafourche and Terrebonne Parishes, Louisiana, and more particularly described as follows: Beginning at a point having Coordinates of X = 2,307,396.54 and Y = 184,769.00; thence West 10,339.56 feet to a point having Coordinates of X = 2,297,056.98 and Y = 184,769.00; thence North 4,378.19 feet to a point having Coordinates of X = 2,297,056.98 and Y = 189,147.19; thence West 2,852.36 feet to a point having Coordinates of X = 2,294,204.62 and Y = 189,147.19; thence North approximately 7,152.15 feet to the Southwest corner of State Lease No. 3278, as amended, also being the Southwest corner of State Lease No. 3723, as amended; thence East 4,225.00 feet along the Southern boundary of said State Lease Nos. 3278 and 3723, to the Southeast corner of said State Lease No. 3278, also being the Southeast corner of said State Lease No. 3723, also being the Northwest corner of State Lease No. 3599, as amended, having Coordinates of X = 2,298,429.62 and Y = 196,299.34; thence South 49 degrees 19 minutes 18 seconds East 11,823.77 feet along the boundary of said State Lease No. 3599 to a point having Coordinates of X = 2,307,396.54 and Y = 188,592.47; thence South 3,823.47 feet to the point of beginning, **LESS AND EXCEPT** any Vacant Sate Lands, being lands which are not currently beds or bottoms of water bodies, and which have not been severed from the ownership of the State of Louisiana; such excepted Vacant State Lands being portions of Lots 1, 2, 3, 4 and 5, Section 35, and Lots 1 and 2, Section 34, Township 21 South, Range 20 East, Louisiana Meridian, situated in Lafourche Parish, Louisiana, as depicted on Sheet 2 (of 2 sheets) of the survey prepared by Norville E. Shearer, approved by the United States Department of the Interior Bureau of Land Management on June 18, 1959, covering lands transferred to the State of Louisiana pursuant to the Swamp Lands Acts of March 2, 1849 and September 30, 1850, containing approximately **2,423 acres**, all as more particularly outlined on a plat on file in the Office of Mineral Resources, Department of Natural Resources. All bearings, distances and coordinates are based on Louisiana Coordinate System of 1927, (North or South Zone), where applicable.

NOTE: The above description of the Tract nominated for the purpose of acquiring a mineral lease or a geophysical agreement has been provided and corrected, where required, exclusively by the nominating party. Any mineral lease or geophysical agreement selected from this Tract and awarded by the Louisiana State Mineral and Energy Board shall be without warranty of any kind, either express, implied or statutory including, but not limited to, title or the implied warranties of merchantability and fitness for a particular purpose.

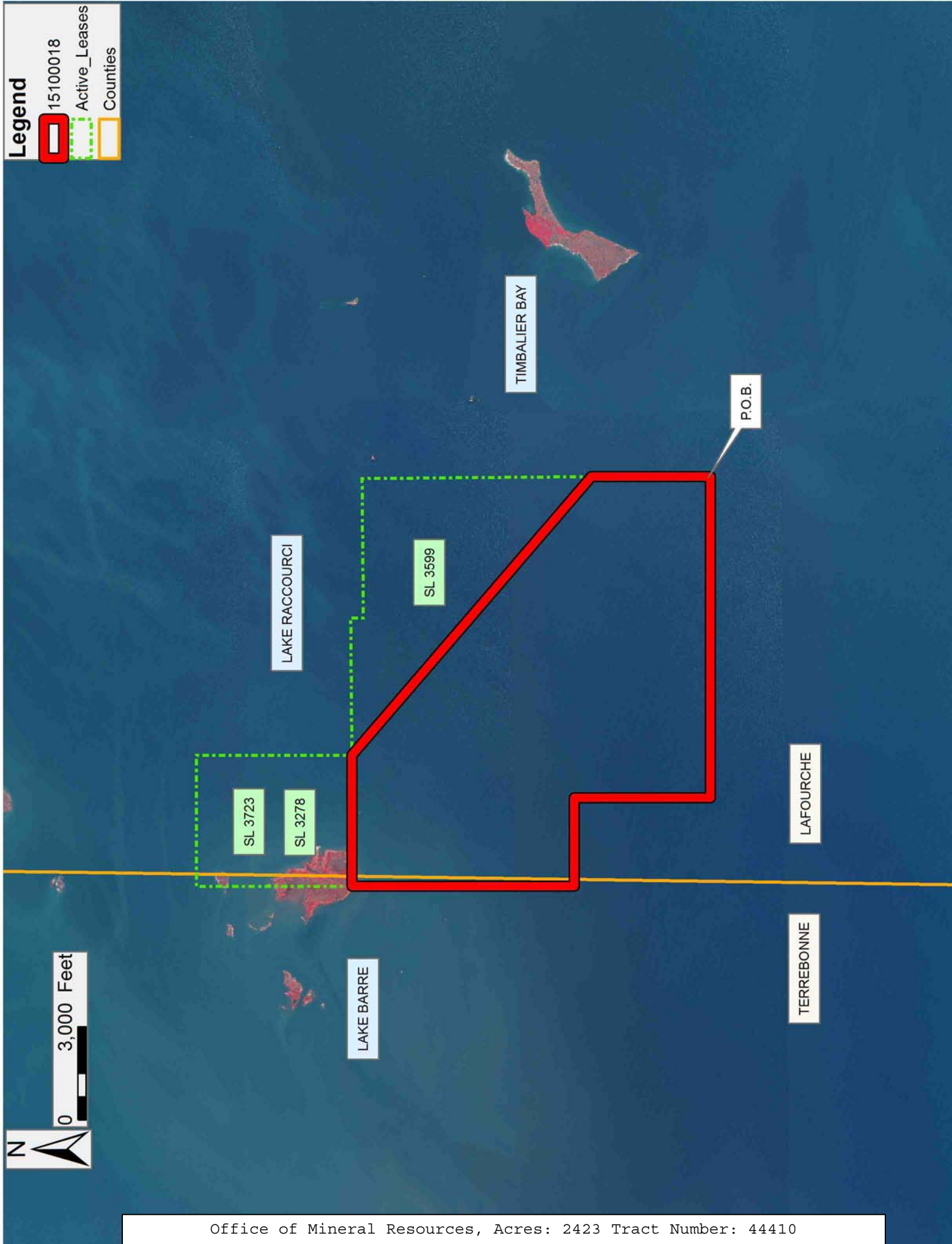
An error or omission in the nominating party's Tract description may require that a State mineral lease or geophysical agreement be modified,

canceled or abrogated due to the existence of conflicting leases, operating agreements, private claims or other future obligations or conditions within the Tract described. In such case, however, the Louisiana State Mineral and Energy Board shall not be obligated to refund any consideration paid by the Lessee prior to such modification, cancellation or abrogation including, but not limited to, bonuses, rentals and royalties.

NOTE: The State of Louisiana does hereby reserve, and this lease shall be subject to, the imprescriptible right of surface use in the nature of a servitude in favor of the Department of Natural Resources, including its Offices and Commissions, for the sole purpose of implementing, constructing, servicing and maintaining approved coastal zone management and/or restoration projects. Utilization of any and all rights derived under this lease by the mineral lessee, its agents, successors or assigns, shall not interfere with nor hinder the reasonable surface use by the Department of Natural Resources, its Offices or Commissions, as herein above reserved.

Applicant: THEOPHILUS OIL, GAS & LAND SERVICES, LLC

Bidder	Cash Payment	Price/ Acre	Rental	Oil	Gas	Other



TRACT 44411 - Lafourche Parish, Louisiana

All of the lands now or formerly constituting the beds and bottoms of all water bodies of every nature and description as to which title is vested in the State of Louisiana, together with all islands arising therein and other lands formed by accretion or by reliction, where allowed by law, excepting tax adjudicated lands, and not presently under mineral lease on October 14, 2015, situated in Lafourche Parish, Louisiana, and more particularly described as follows: Beginning at a point having Coordinates of X = 2,307,396.54 and Y = 184,469.00; thence North 4,123.47 feet to a point on the boundary of State Lease No. 3599, as amended, having Coordinates of X = 2,307,396.54 and Y = 188,592.47; thence North 00 degrees 29 minutes 42 seconds West 4,043.58 feet along said boundary of said State Lease No. 3599 to a point on the boundary of State Lease No. 14703, having Coordinates of X = 2,307,361.61 and Y = 192,635.90; thence along the boundary of said State Lease No. 14703 the following courses and distances: North 43 degrees 30 minutes 18 seconds East 2,167.58 feet to a point having Coordinates of X = 2,308,853.81 and Y = 194,208.08, and North 43 degrees 10 minutes 43 seconds East 2,455.77 feet to a point on the boundary of State Lease No. 1480 as amended, having Coordinates of X = 2,310,534.22 and Y = 195,998.90; thence North 89 degrees 30 minutes 18 seconds East 2,696.97 feet to the Northeast corner of State Lease No. 3258, as amended, having Coordinates of X = 2,313,231.09 and Y = 196,022.20; thence along the boundary of said State Lease No. 3258, the following courses and distances: South 43 degrees 31 minutes 57 seconds West 2,906.95 feet to a point having Coordinates of X = 2,311,228.89 and Y = 193,914.70, South 00 degrees 26 minutes 59 seconds East 1,399.89 feet to a point having Coordinates of X = 2,311,239.87 and Y = 192,514.86, North 89 degrees 30 minutes 18 seconds East 2,788.87 feet to a point having Coordinates of X = 2,314,028.64 and Y = 192,538.95, North 57 degrees 00 minutes 41 seconds West 534.71 feet to a point having Coordinates of X = 2,313,580.14 and Y = 192,830.09, North 58 degrees 14 minutes 26 seconds East 493.84 feet to a point having Coordinates of X = 2,314,000.03 and Y = 193,090.02, North 49 degrees 23 minutes 55 seconds East 368.80 feet to a point having Coordinates of X = 2,314,280.04 and Y = 193,330.03, North 46 degrees 04 minutes 51 seconds East 374.80 feet to a point having Coordinates of X = 2,314,550.02 and Y = 193,590.01, North 37 degrees 18 minutes 14 seconds East 264.00 feet to a point having Coordinates of X = 2,314,710.01 and Y = 193,800.00, North 31 degrees 49 minutes 39 seconds East 341.30 feet to a point having Coordinates of X = 2,314,890.00 and Y = 194,090.00, North 24 degrees 37 minutes 24 seconds East 264.00 feet to a point having Coordinates of X = 2,315,000.00 and Y = 194,329.98, North 20 degrees 22 minutes 35 seconds East 373.40 feet to a point having Coordinates of X = 2,315,130.01 and Y = 194,680.01, North 15 degrees 06 minutes 34 seconds East 580.77 feet to a point having Coordinates of X = 2,315,281.40 and Y = 195,240.71, North 54 degrees 21 minutes 40 seconds West 530.82 feet to a point having Coordinates of X = 2,314,850.00 and Y = 195,550.00 and North 08 degrees 36 minutes 56 seconds East 492.38 feet to its Northeast corner having Coordinates of X = 2,314,923.76 and Y = 196,035.82; thence North 89 degrees 30 minutes 18 seconds East 2,812.45

feet to the Southwest corner of State Lease No. 14589 as amended having Coordinates of X = 2,317,736.10 and Y = 196,061.12; thence South 11,592.12 feet to a point having Coordinates of X = 2,317,736.10 and Y = 184,469.00; thence West 10,339.56 feet to the point of beginning, **LESS AND EXCEPT** any right, title, and interest in lands owned by and not under lease from the State of Louisiana, on behalf of the Lafourche Parish School Board, situated in Section 16, Township 22 South, Range 21 East, Lafourche Parish, Louisiana, contained within the above described tract, and **LESS AND EXCEPT** any Vacant State Lands, being lands which are not currently beds or bottoms of water bodies, and which have not been severed from the ownership of the State of Louisiana; such excepted Vacant State Lands being portions of Lot 1, Section 17, Township 22 South, Range 21 East, and Lots 1 and 2 Section 20, Township 22 South, Range 21 East, and Lots 3 and 4, Section 21, Township 22 South, Range 21 East, and Lot 1, Section 29, Township 22 South, Range 21 East, Louisiana Meridian, situated in Lafourche Parish, Louisiana, as depicted on Sheets 4 and 6 (of 6 sheets) of the survey prepared by Norville E. Shearer, approved by the United States Department of the Interior Bureau of Land Management on June 18, 1959, covering lands transferred to the State of Louisiana pursuant to the Swamp Lands Acts of March 2, 1849 and September 30, 1850, containing approximately **2,206 acres**, all as more particularly outlined on a plat on file in the Office of Mineral Resources, Department of Natural Resources. All bearings, distances and coordinates are based on Louisiana Coordinate System of 1927, (North or South Zone), where applicable.

NOTE: The above description of the Tract nominated for the purpose of acquiring a mineral lease or a geophysical agreement has been provided and corrected, where required, exclusively by the nominating party. Any mineral lease or geophysical agreement selected from this Tract and awarded by the Louisiana State Mineral and Energy Board shall be without warranty of any kind, either express, implied or statutory including, but not limited to, title or the implied warranties of merchantability and fitness for a particular purpose.

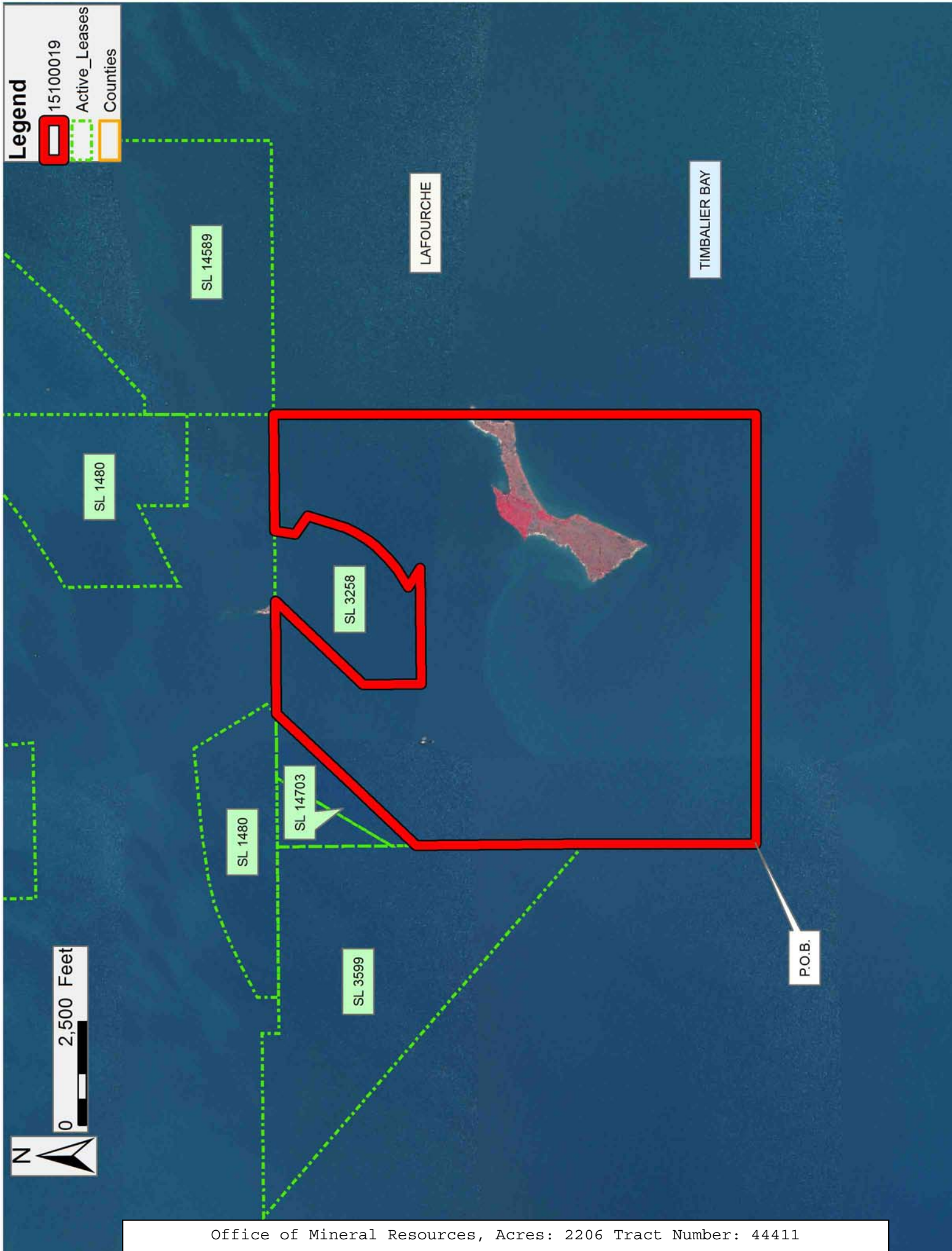
An error or omission in the nominating party's Tract description may require that a State mineral lease or geophysical agreement be modified, canceled or abrogated due to the existence of conflicting leases, operating agreements, private claims or other future obligations or conditions within the Tract described. In such case, however, the Louisiana State Mineral and Energy Board shall not be obligated to refund any consideration paid by the Lessee prior to such modification, cancellation or abrogation including, but not limited to, bonuses, rentals and royalties.

NOTE: The State of Louisiana does hereby reserve, and this lease shall be subject to, the imprescriptible right of surface use in the nature of a servitude in favor of the Department of Natural Resources, including its Offices and Commissions, for the sole purpose of implementing, constructing, servicing and maintaining approved coastal zone management

and/or restoration projects. Utilization of any and all rights derived under this lease by the mineral lessee, its agents, successors or assigns, shall not interfere with nor hinder the reasonable surface use by the Department of Natural Resources, its Offices or Commissions, as herein above reserved.

Applicant: THEOPHILUS OIL, GAS & LAND SERVICES, LLC

Bidder	Cash Payment	Price/ Acre	Rental	Oil	Gas	Other



Legend

15100019

Active_Leases

Counties

SL 14589

LAFOURCHE

TIMBALIER BAY

SL 1480

SL 3258

SL 1480

SL 14703

SL 3599

P.O.B.

0 2,500 Feet

N

TRACT 44412 - Lafourche Parish, Louisiana

All of the lands now or formerly constituting the beds and bottoms of all water bodies of every nature and description as to which title is vested in the State of Louisiana, together with all islands arising therein and other lands formed by accretion or by reliction, where allowed by law, excepting tax adjudicated lands, and not presently under mineral lease on October 14, 2015, situated in Lafourche Parish, Louisiana, and more particularly described as follows: Beginning at the Southwest corner of State Lease No. 14589, as amended, having Coordinates of X = 2,317,736.10 and Y = 196,061.12; thence along the boundary of said State Lease No. 14589 the following courses and distances: North 89 degrees 30 minutes 18 seconds East 4,354.31 feet to a point having Coordinates of X = 2,322,090.24 and Y = 196,098.74, and North 89 degrees 30 minutes 18 seconds East 2,234.11 feet to its Southeast corner, having Coordinates of X = 2,324,324.27 and Y = 196,118.04; thence East 3,769.17 feet to a point having Coordinates of X = 2,328,093.43 and Y = 196,118.05; thence South 11,649.05 feet to a point having Coordinates of X = 2,328,093.43 and Y = 184,469.00; thence West 10,357.33 feet to a point having Coordinates of X = 2,317,736.10 and Y = 184,469.00; thence North 11,592.12 feet to the point of beginning, **LESS AND EXCEPT** any right, title, and interest in lands owned by and not under lease from the State of Louisiana, on behalf of the Lafourche Parish School Board, situated in Section 16, Township 22 South, Range 21 East, Lafourche Parish, Louisiana, contained within the above described tract, **LESS AND EXCEPT** any Vacant State Lands, being lands which are not currently beds or bottoms of water bodies, and which have not been severed from the ownership of the State of Louisiana; such excepted Vacant State Lands being portions of Lots 1, 2, 3, and 4, Section 21, Township 22 South, Range 21 East, Louisiana Meridian, situated in Lafourche Parish, Louisiana, as depicted on Sheet 4 (of 6 Sheets) of the survey prepared by Norville E. Shearer, approved by the United States Department of the Interior Bureau of Land Management on June 18, 1959, covering lands transferred to the State of Louisiana pursuant to the Swamp Lands Acts of March 2, 1849 and September 30, 1850, containing approximately **2,425 acres**, all as more particularly outlined on a plat on file in the Office of Mineral Resources, Department of Natural Resources. All bearings, distances and coordinates are based on Louisiana Coordinate System of 1927, (North or South Zone), where applicable.

NOTE: The above description of the Tract nominated for the purpose of acquiring a mineral lease or a geophysical agreement has been provided and corrected, where required, exclusively by the nominating party. Any mineral lease or geophysical agreement selected from this Tract and awarded by the Louisiana State Mineral and Energy Board shall be without warranty of any kind, either express, implied or statutory including, but not limited to, title or the implied warranties of merchantability and fitness for a particular purpose.

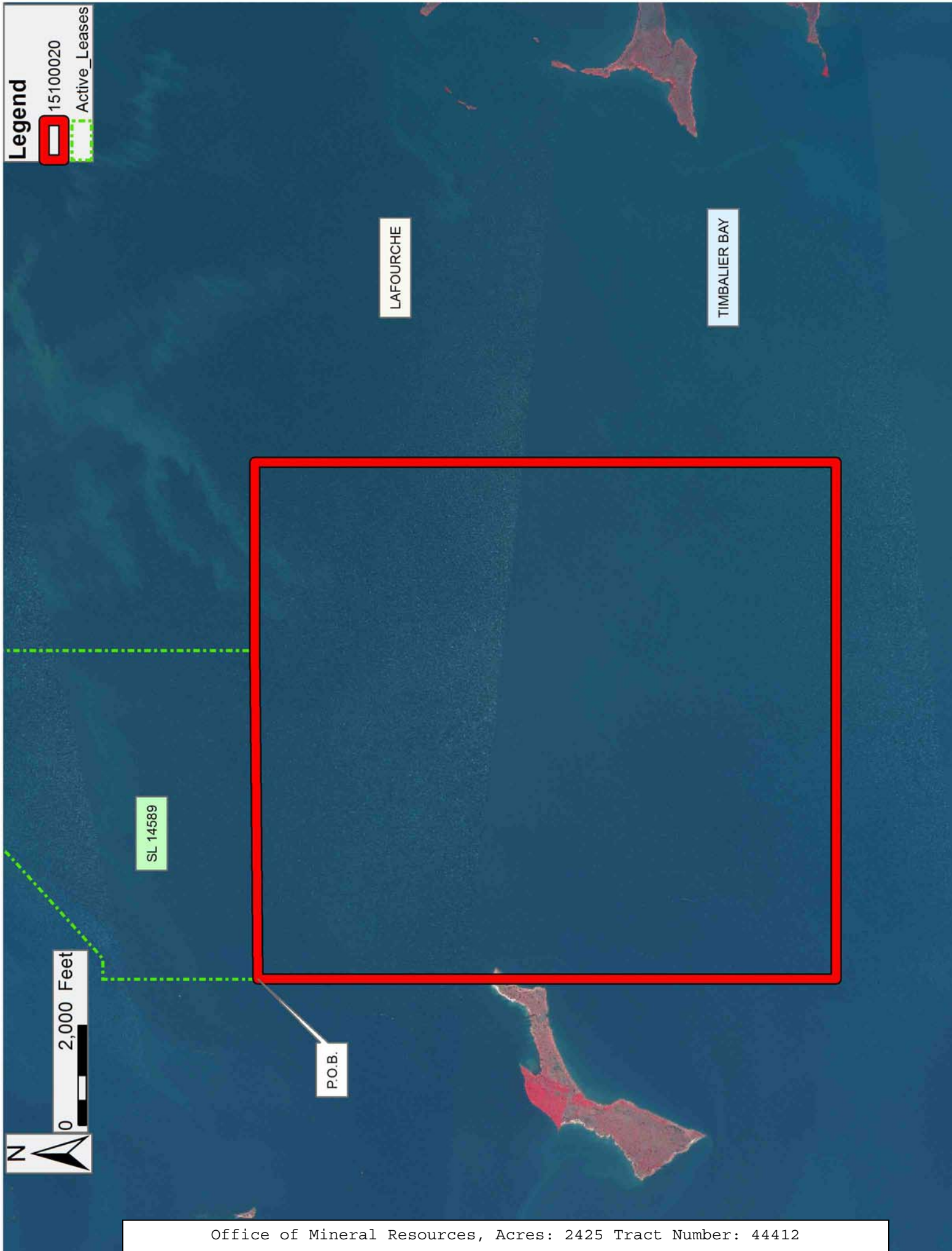
An error or omission in the nominating party's Tract description may require that a State mineral lease or geophysical agreement be modified,

canceled or abrogated due to the existence of conflicting leases, operating agreements, private claims or other future obligations or conditions within the Tract described. In such case, however, the Louisiana State Mineral and Energy Board shall not be obligated to refund any consideration paid by the Lessee prior to such modification, cancellation or abrogation including, but not limited to, bonuses, rentals and royalties.

NOTE: The State of Louisiana does hereby reserve, and this lease shall be subject to, the imprescriptible right of surface use in the nature of a servitude in favor of the Department of Natural Resources, including its Offices and Commissions, for the sole purpose of implementing, constructing, servicing and maintaining approved coastal zone management and/or restoration projects. Utilization of any and all rights derived under this lease by the mineral lessee, its agents, successors or assigns, shall not interfere with nor hinder the reasonable surface use by the Department of Natural Resources, its Offices or Commissions, as herein above reserved.

Applicant: THEOPHILUS OIL, GAS & LAND SERVICES, LLC

Bidder	Cash Payment	Price/ Acre	Rental	Oil	Gas	Other



TRACT 44413 - Lafourche Parish, Louisiana

All of the lands now or formerly constituting the beds and bottoms of all water bodies of every nature and description as to which title is vested in the State of Louisiana, together with all islands arising therein and other lands formed by accretion or by reliction, where allowed by law, excepting tax adjudicated lands, and not presently under mineral lease on October 14, 2015, situated in Lafourche Parish, Louisiana, and more particularly described as follows: Beginning at a point having Coordinates of X = 2,328,093.43 and Y = 196,118.05; thence East 8,649.62 feet to a point having Coordinates of X = 2,336,743.05 and Y = 196,118.05; thence South 11,649.05 feet to a point having Coordinates of X = 2,336,743.05 and Y = 184,469.00; thence West 8,649.62 feet to a point having Coordinates of X = 2,328,093.43 and Y = 184,469.00; thence North 11,649.05 feet to the point of beginning, **LESS AND EXCEPT** any Vacant State Lands, being lands which are not currently beds or bottoms of water bodies, and which have not been severed from the ownership of the State of Louisiana; such excepted Vacant State Lands being portions of Lot 1, Section 24, and Lots 1, 2, 3, 4, 5, 6, and 7, Section 25, Township 22 South, Range 21 East, Louisiana Meridian, situated in Lafourche Parish, Louisiana, as depicted on Sheets 3 and 5 (of 6 Sheets) of the survey prepared by Norville E. Shearer, approved by the United States Department of the Interior Bureau of Land Management on June 18, 1959, covering lands transferred to the State of Louisiana pursuant to the Swamp Lands Acts of March 2, 1849 and September 30, 1850, containing approximately **2,255 acres**, all as more particularly outlined on a plat on file in the Office of Mineral Resources, Department of Natural Resources. All bearings, distances and coordinates are based on Louisiana Coordinate System of 1927, (North or South Zone), where applicable.

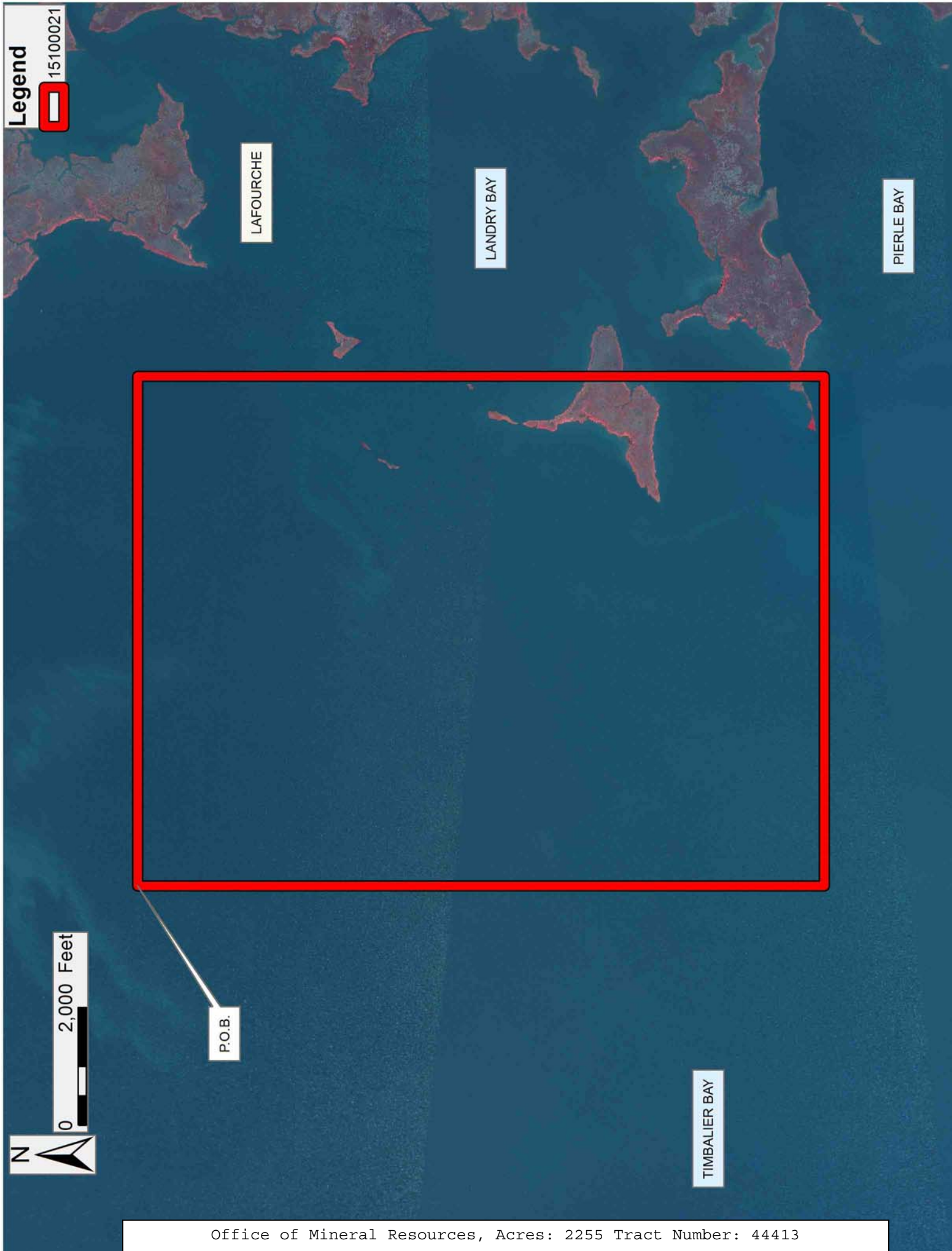
NOTE: The above description of the Tract nominated for the purpose of acquiring a mineral lease or a geophysical agreement has been provided and corrected, where required, exclusively by the nominating party. Any mineral lease or geophysical agreement selected from this Tract and awarded by the Louisiana State Mineral and Energy Board shall be without warranty of any kind, either express, implied or statutory including, but not limited to, title or the implied warranties of merchantability and fitness for a particular purpose.

An error or omission in the nominating party's Tract description may require that a State mineral lease or geophysical agreement be modified, canceled or abrogated due to the existence of conflicting leases, operating agreements, private claims or other future obligations or conditions within the Tract described. In such case, however, the Louisiana State Mineral and Energy Board shall not be obligated to refund any consideration paid by the Lessee prior to such modification, cancellation or abrogation including, but not limited to, bonuses, rentals and royalties.

NOTE: The State of Louisiana does hereby reserve, and this lease shall be subject to, the imprescriptible right of surface use in the nature of a servitude in favor of the Department of Natural Resources, including its Offices and Commissions, for the sole purpose of implementing, constructing, servicing and maintaining approved coastal zone management and/or restoration projects. Utilization of any and all rights derived under this lease by the mineral lessee, its agents, successors or assigns, shall not interfere with nor hinder the reasonable surface use by the Department of Natural Resources, its Offices or Commissions, as herein above reserved.

Applicant: THEOPHILUS OIL, GAS & LAND SERVICES, LLC

Bidder	Cash Payment	Price/ Acre	Rental	Oil	Gas	Other



TRACT 44414 - Lafourche Parish, Louisiana

All of the lands now or formerly constituting the beds and bottoms of all water bodies of every nature and description as to which title is vested in the State of Louisiana, together with all islands arising therein and other lands formed by accretion or by reliction, where allowed by law, excepting tax adjudicated lands, and not presently under mineral lease on October 14, 2015, situated in Lafourche Parish, Louisiana, and more particularly described as follows: Beginning at a point having Coordinates of X = 2,336,743.05 and Y = 196,118.05; thence East 9,250.00 feet to a point having Coordinates of X = 2,345,993.05 and Y = 196,118.05; thence South 11,649.05 feet to a point having Coordinates of X = 2,345,993.05 and Y = 184,469.00; thence West 9,250.00 feet to a point having Coordinates of X = 2,336,743.05 and Y = 184,469.00; thence North 11,649.05 feet to the point of beginning, containing approximately **1,568 acres**, all as more particularly outlined on a plat on file in the Office of Mineral Resources, Department of Natural Resources. All bearings, distances and coordinates are based on Louisiana Coordinate System of 1927, (North or South Zone), where applicable.

NOTE: The above description of the Tract nominated for the purpose of acquiring a mineral lease or a geophysical agreement has been provided and corrected, where required, exclusively by the nominating party. Any mineral lease or geophysical agreement selected from this Tract and awarded by the Louisiana State Mineral and Energy Board shall be without warranty of any kind, either express, implied or statutory including, but not limited to, title or the implied warranties of merchantability and fitness for a particular purpose.

An error or omission in the nominating party's Tract description may require that a State mineral lease or geophysical agreement be modified, canceled or abrogated due to the existence of conflicting leases, operating agreements, private claims or other future obligations or conditions within the Tract described. In such case, however, the Louisiana State Mineral and Energy Board shall not be obligated to refund any consideration paid by the Lessee prior to such modification, cancellation or abrogation including, but not limited to, bonuses, rentals and royalties.

NOTE: The State of Louisiana does hereby reserve, and this lease shall be subject to, the imprescriptible right of surface use in the nature of a servitude in favor of the Department of Natural Resources, including its Offices and Commissions, for the sole purpose of implementing, constructing, servicing and maintaining approved coastal zone management and/or restoration projects. Utilization of any and all rights derived under this lease by the mineral lessee, its agents, successors or assigns, shall not interfere with nor hinder the reasonable surface use by the Department of Natural Resources, its Offices or Commissions, as herein above reserved.

Applicant: THEOPHILUS OIL, GAS & LAND SERVICES, LLC

Bidder	Cash Payment	Price/ Acre	Rental	Oil	Gas	Other

