

**TRACT 44395 - Lafourche Parish, Louisiana**

All of the lands now or formerly constituting the beds and bottoms of all water bodies of every nature and description as to which title is vested in the State of Louisiana, together with all islands arising therein and other lands formed by accretion or by reliction, where allowed by law, excepting tax adjudicated lands, and not presently under mineral lease on October 14, 2015, situated in Lafourche Parish, Louisiana, and more particularly described as follows: Beginning at a point having Coordinates of X = 2,351,963.00 and Y = 222,648.00; thence East approximately 3,085 feet to a point on the boundary of the Judgment Area dated June 28, 1955 having a Coordinate of Y = 222,648.00; thence Southeasterly along the boundary of said Judgment Area dated June 28, 1955 to the Northeast corner of State Lease No. 20972 having a Coordinate of Y = 220,318.31; thence West approximately 271 feet along the boundary of said State Lease No. 20972 to the Northeast corner of State Lease No. 21576 having Coordinates of X = 2,355,747.61 and Y = 220,318.31; thence West 958.11 feet along the boundary of said State Lease No. 21576 to its Northwest corner and a corner of said State Lease No. 20972 having Coordinates of X = 2,354,789.50 and Y = 220,318.31; thence West 2,826.50 feet along the boundary of said State Lease No. 20972 to its Northwest corner having Coordinates of X = 2,351,963.00 and Y = 220,318.31; thence North 2,329.69 feet to the point of beginning, containing approximately **30 acres**, all as more particularly outlined on a plat on file in the Office of Mineral Resources, Department of Natural Resources. All bearings, distances and coordinates are based on Louisiana Coordinate System of 1927, (North or South Zone), where applicable.

NOTE: The above description of the Tract nominated for the purpose of acquiring a mineral lease or a geophysical agreement has been provided and corrected, where required, exclusively by the nominating party. Any mineral lease or geophysical agreement selected from this Tract and awarded by the Louisiana State Mineral and Energy Board shall be without warranty of any kind, either express, implied or statutory including, but not limited to, title or the implied warranties of merchantability and fitness for a particular purpose.

An error or omission in the nominating party's Tract description may require that a State mineral lease or geophysical agreement be modified, canceled or abrogated due to the existence of conflicting leases, operating agreements, private claims or other future obligations or conditions within the Tract described. In such case, however, the Louisiana State Mineral and Energy Board shall not be obligated to refund any consideration paid by the Lessee prior to such modification, cancellation or abrogation including, but not limited to, bonuses, rentals and royalties.

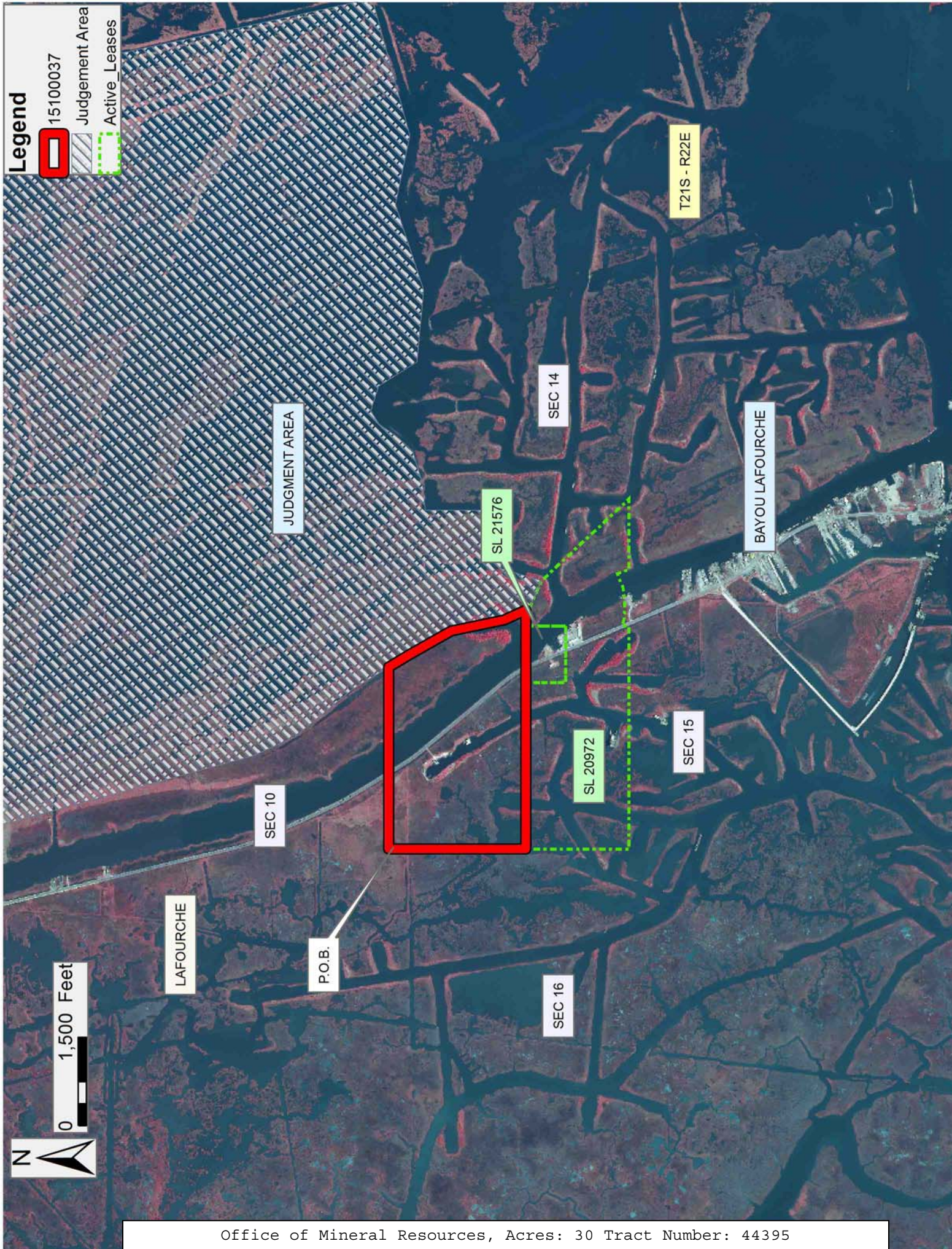
NOTE: The State of Louisiana does hereby reserve, and this lease shall be subject to, the imprescriptible right of surface use in the nature of a servitude in favor of the Department of Natural Resources, including its Offices and Commissions, for the sole purpose of implementing,

constructing, servicing and maintaining approved coastal zone management and/or restoration projects. Utilization of any and all rights derived under this lease by the mineral lessee, its agents, successors or assigns, shall not interfere with nor hinder the reasonable surface use by the Department of Natural Resources, its Offices or Commissions, as herein above reserved.

Applicant: SOUTH LOUISIANA MINERALS, INC.

Bidder	Cash Payment	Price/ Acre	Rental	Oil	Gas	Other







**TRACT 44396 - Terrebonne Parish, Louisiana**

All of the lands now or formerly constituting the beds and bottoms of all water bodies of every nature and description as to which title is vested in the State of Louisiana, together with all islands arising therein and other lands formed by accretion or by reliction, where allowed by law, excepting tax adjudicated lands, and not presently under mineral lease on October 14, 2015, situated in Terrebonne Parish, Louisiana, and more particularly described as follows: Beginning at a point on the boundary of State Lease No. 21151, also being a point on the boundary of State Lease No. 20946, having Coordinates of X = 2,280,825.89 and Y = 205,195.00; thence along the boundary of said State Lease No. 20946 the following courses and distances: North 60 degrees 28 minutes 32 seconds East 940.20 feet to a point having Coordinates of X = 2,281,644.00 and Y = 205,658.33 and North 106.31 feet to a point having Coordinates of X = 2,281,644.00 and Y = 205,764.64; thence North 43 degrees 42 minutes 53 seconds East 18,391.78 feet to a point having Coordinates of X = 2,294,354.00 and Y = 219,058.00; thence South 11,837.34 feet to a point having Coordinates of X = 2,294,354.00 and Y = 207,220.66; thence West 1,139.42 feet to a point having Coordinates of X = 2,293,214.58 and Y = 207,220.66; thence South 2,025.66 feet to a point having Coordinates of X = 2,293,214.58 and Y = 205,195.00; thence West 10,839.58 feet to a point on the boundary of said State Lease No. 21151, having Coordinates of X = 2,282,375.00 and Y = 205,195.00; thence West 1,549.11 feet along said boundary of said State Lease No. 21151 to the point of beginning, **LESS AND EXCEPT** any right, title, and interest in lands owned by and not under lease from the State of Louisiana, on behalf of the Terrebonne Parish School Board, situated in Section 16, Township 21 South, Range 20 East, Terrebonne Parish, Louisiana, contained within the above described tract, containing approximately **2,056.95 acres**, all as more particularly outlined on a plat on file in the Office of Mineral Resources, Department of Natural Resources. All bearings, distances and coordinates are based on Louisiana Coordinate System of 1927, (North or South Zone), where applicable.

NOTE: The above description of the Tract nominated for the purpose of acquiring a mineral lease or a geophysical agreement has been provided and corrected, where required, exclusively by the nominating party. Any mineral lease or geophysical agreement selected from this Tract and awarded by the Louisiana State Mineral and Energy Board shall be without warranty of any kind, either express, implied or statutory including, but not limited to, title or the implied warranties of merchantability and fitness for a particular purpose.

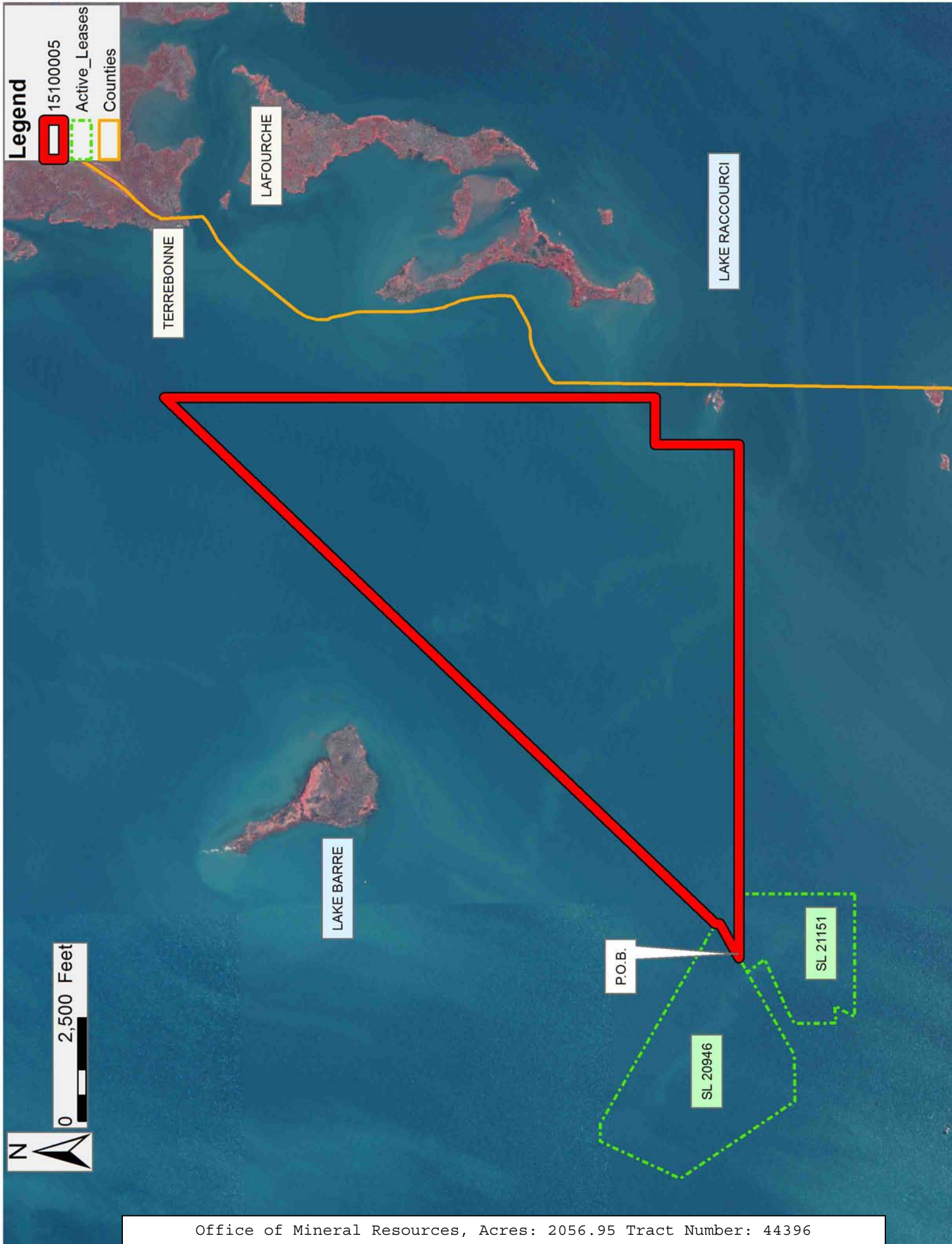
An error or omission in the nominating party's Tract description may require that a State mineral lease or geophysical agreement be modified, canceled or abrogated due to the existence of conflicting leases, operating agreements, private claims or other future obligations or conditions within the Tract described. In such case, however, the Louisiana State Mineral and Energy Board shall not be obligated to refund any consideration paid by the Lessee prior to such modification,

cancellation or abrogation including, but not limited to, bonuses, rentals and royalties.

NOTE: The State of Louisiana does hereby reserve, and this lease shall be subject to, the imprescriptible right of surface use in the nature of a servitude in favor of the Department of Natural Resources, including its Offices and Commissions, for the sole purpose of implementing, constructing, servicing and maintaining approved coastal zone management and/or restoration projects. Utilization of any and all rights derived under this lease by the mineral lessee, its agents, successors or assigns, shall not interfere with nor hinder the reasonable surface use by the Department of Natural Resources, its Offices or Commissions, as herein above reserved.

Applicant: THEOPHILUS OIL, GAS & LAND SERVICES, LLC

Bidder	Cash Payment	Price/ Acre	Rental	Oil	Gas	Other



**TRACT 44397 - Lafourche and Terrebonne Parishes, Louisiana**

All of the lands now or formerly constituting the beds and bottoms of all water bodies of every nature and description as to which title is vested in the State of Louisiana, together with all islands arising therein and other lands formed by accretion or by reliction, where allowed by law, excepting tax adjudicated lands, and not presently under mineral lease on October 14, 2015, situated in Lafourche and Terrebonne Parishes, Louisiana, and more particularly described as follows: Beginning at a point having Coordinates of X = 2,294,354.00 and Y = 219,058.00; thence East 8,951.48 feet to a point having Coordinates of X = 2,303,305.48 and Y = 219,058.00; thence South 3,428.55 feet to a point on the boundary of State Lease No. 21147, having Coordinates of X = 2,303,305.48 and Y = 215,629.45; thence South 27 degrees 25 minutes 49 seconds West 1,457.84 feet along the boundary of said State Lease No. 21147 to a point on the boundary of State Lease No. 21554, having Coordinates of X = 2,302,633.90 and Y = 214,335.51; thence along the boundary of said State Lease No. 21554 the following courses and distances: North 39 degrees 52 minutes 18 seconds West 771.99 feet to a point having Coordinates of X = 2,302,139.00 and Y = 214,928.00, South 60 degrees 16 minutes 59 seconds West 3,570.59 feet to a point having Coordinates of X = 2,299,038.00 and Y = 213,158.00, South 09 degrees 17 minutes 43 seconds East 1,676.79 feet to a point having Coordinates of X = 2,299,308.84 and Y = 211,503.23, North 82 degrees 59 minutes 16 seconds East 1,009.26 feet to a point having Coordinates of X = 2,300,310.55 and Y = 211,626.44, North 60 degrees 31 minutes 27 seconds East 1,363.57 feet to a point having Coordinates of X = 2,301,497.62 and Y = 212,297.39, South 89 degrees 39 minutes 22 seconds East 1,294.74 feet to a point having Coordinates of X = 2,302,792.34 and Y = 212,289.62, South 72 degrees 28 minutes 53 seconds East 460.91 feet to a point having Coordinates of X = 2,303,231.87 and Y = 212,150.88 and North 66 degrees 25 minutes 10 seconds East 1,066.30 feet to the Southernmost point of said State Lease No. 21147, also being the Southwest corner of State Lease No. 21225, having Coordinates of X = 2,304,209.13 and Y = 212,577.44; thence North 70 degrees 45 minutes 06 seconds East 1,370.55 feet to a point having Coordinates of X = 2,305,503.06 and Y = 213,029.26; thence South 4,069.30 feet to a point having Coordinates of X = 2,305,503.06 and Y = 208,959.96; thence West 1,416.88 feet to a point having Coordinates of X = 2,304,086.18 and Y = 208,959.96; thence South 1,739.30 feet to a point having Coordinates of X = 2,304,086.18 and Y = 207,220.66; thence West 9,732.18 feet to a point having Coordinates of X = 2,294,354.00 and Y = 207,220.66; thence North 11,837.34 feet to the point of beginning, containing approximately **2,144 acres**, all as more particularly outlined on a plat on file in the Office of Mineral Resources, Department of Natural Resources. All bearings, distances and coordinates are based on Louisiana Coordinate System of 1927, (North or South Zone), where applicable.

NOTE: The above description of the Tract nominated for the purpose of acquiring a mineral lease or a geophysical agreement has been provided and corrected, where required, exclusively by the nominating party. Any

mineral lease or geophysical agreement selected from this Tract and awarded by the Louisiana State Mineral and Energy Board shall be without warranty of any kind, either express, implied or statutory including, but not limited to, title or the implied warranties of merchantability and fitness for a particular purpose.

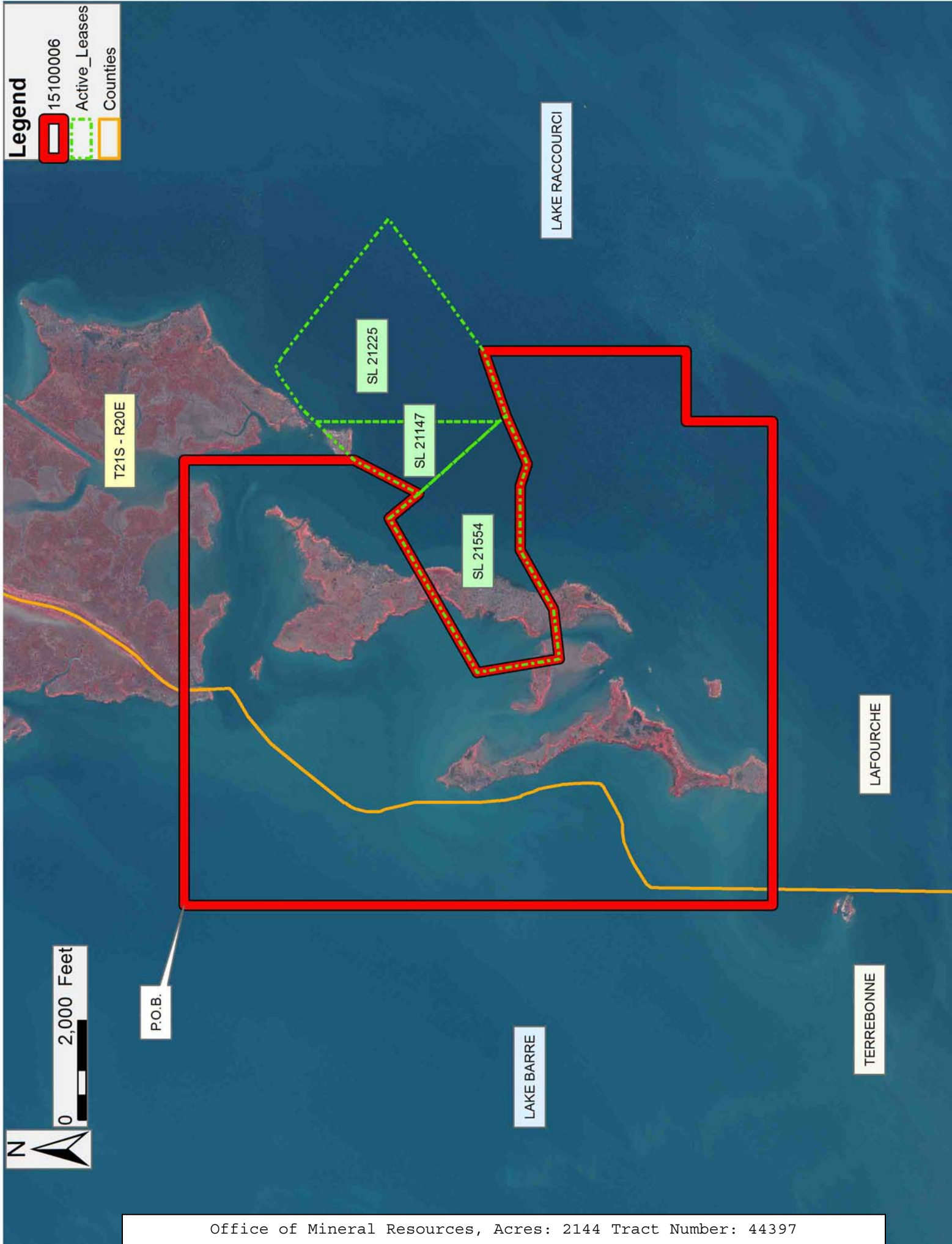
An error or omission in the nominating party's Tract description may require that a State mineral lease or geophysical agreement be modified, canceled or abrogated due to the existence of conflicting leases, operating agreements, private claims or other future obligations or conditions within the Tract described. In such case, however, the Louisiana State Mineral and Energy Board shall not be obligated to refund any consideration paid by the Lessee prior to such modification, cancellation or abrogation including, but not limited to, bonuses, rentals and royalties.

NOTE: The State of Louisiana does hereby reserve, and this lease shall be subject to, the imprescriptible right of surface use in the nature of a servitude in favor of the Department of Natural Resources, including its Offices and Commissions, for the sole purpose of implementing, constructing, servicing and maintaining approved coastal zone management and/or restoration projects. Utilization of any and all rights derived under this lease by the mineral lessee, its agents, successors or assigns, shall not interfere with nor hinder the reasonable surface use by the Department of Natural Resources, its Offices or Commissions, as herein above reserved.

Applicant: THEOPHILUS OIL, GAS & LAND SERVICES, LLC

Bidder	Cash Payment	Price/ Acre	Rental	Oil	Gas	Other





**TRACT 44398 - Lafourche Parish, Louisiana**

All of the lands now or formerly constituting the beds and bottoms of all water bodies of every nature and description as to which title is vested in the State of Louisiana, together with all islands arising therein and other lands formed by accretion or by reliction, where allowed by law, excepting tax adjudicated lands, and not presently under mineral lease on October 14, 2015, situated in Lafourche Parish, Louisiana, and more particularly described as follows: Beginning at a point having Coordinates of X = 2,303,305.48 and Y = 219,058.00; thence North 89 degrees 59 minutes 14 seconds East 4,830.14 feet to a point on the Northern portion of State Lease No. 1450, as amended, having Coordinates of X = 2,308,135.62 and Y = 219,059.07; thence along said boundary of said State Lease No. 1450 the following courses and distances: along a curve to the left having a radius of 3,475.00 feet to a point having Coordinates of X = 2,308,560.01 and Y = 218,180.00, South 56 degrees 10 minutes 58 seconds East 3,290.12 feet to a point having Coordinates of X = 2,311,293.50 and Y = 216,348.90, South 24 degrees 50 minutes 19 seconds West 1,216.46 feet to a point having Coordinates of X = 2,310,782.51 and Y = 215,244.97, and North 82 degrees 33 minutes 22 seconds East 6,950.97 feet to a corner on a Northern portion of State Lease No. 1451, as amended, having Coordinates of X = 2,317,674.90 and Y = 216,145.51; thence North 82 degrees 33 minutes 22 seconds East 28.85 feet having Coordinates of X = 2,317,703.51 and Y = 216,149.25; thence South 3,315.77 feet to a point on the boundary of a Southern portion of State Lease No. 1450, as amended, having Coordinates of X = 2,317,703.51 and Y = 212,833.48; thence along said boundary of said State Lease No. 1450 the following courses and distances: South 73 degrees 43 minutes 35 seconds West 1,555.61 feet to a point having Coordinates of X = 2,316,210.23 and Y = 212,397.56, South 00 degrees 29 minutes 42 seconds East approximately 2,076 feet to a point on its Southern tip, thence Northeasterly along the Northernmost portion of said Tract 2 approximately 2,539 feet to a point being its Southeast corner, said point also being a point on the Northernmost portion of Tract 2 of State Lease No. 1451, as amended; thence South 00 degrees 29 minutes 42 seconds East approximately 1,517 feet to the Northern corner of the Southeastern portion of said Tract 2 of State Lease No. 1450; thence Southwesterly approximately 2,933 feet along the Southeastern portion of said Tract 2 of State Lease No. 1450 to its Southwest corner, said point also being a point on the Northern boundary of State Lease No. 1480, as amended; thence Southwesterly and Northerly along the boundary of said State Lease No. 1480 to a point being the Southeast corner of the Western portion of said Tract 2 of State Lease No. 1450; thence along the boundary of the Western portion of said Tract 2 of State Lease No. 1450 the following: Northerly approximately 831 feet to its Northeast corner, South 89 degrees 30 minutes 18 seconds West approximately 5,041 feet to a point being its Northwest corner having Coordinates of X = 2,311,049.54 and Y = 209,823.98, and South 01 degrees 11 minutes 08 seconds East 820.17 feet to a point on a portion of said State Lease No. 1480 having Coordinates of X = 2,311,066.51 and Y = 209,003.99; thence South 89 degrees 30 minutes 18 seconds West 5,095.22 feet along the boundary of said State Lease No. 1480

to a point having Coordinates of X = 2,305,971.46 and Y = 208,959.96; thence West 468.42 feet to a point having Coordinates of X = 2,305,503.06 and Y = 208,959.96; thence North 4,069.30 feet to a point on the boundary of State Lease No. 21225, having Coordinates of X = 2,305,503.06 and Y = 213,029.26; thence along the boundary of said State Lease No. 21225 the following courses and distances: North 54 degrees 14 minutes 08 seconds East 3,280.30 feet to a point having Coordinates of X = 2,308,164.78 and Y = 214,946.44, North 52 degrees 15 minutes 54 seconds West 3,411.22 feet to a point having Coordinates of X = 2,305,467.02 and Y = 217,034.14, North 58 degrees 24 minutes 34 seconds West 372.53 feet to a point having Coordinates of X = 2,305,149.69 and Y = 217,229.29, South 56 degrees 07 minutes 00 seconds West 941.32 feet to a point having Coordinates of X = 2,304,368.23 and Y = 216,704.50, and South 44 degrees 40 minutes 15 seconds West 401.19 feet to a point on the boundary of State Lease No. 21147, having Coordinates of X = 2,304,086.18 and Y = 216,419.19; thence South 44 degrees 40 minutes 13 seconds West 1,110.49 feet along the boundary of said State Lease No. 21147 to a point having Coordinates of X = 2,303,305.48 and Y = 215,629.45; thence North 3,428.55 feet to the point of beginning, containing approximately **1,941 acres**, all as more particularly outlined on a plat on file in the Office of Mineral Resources, Department of Natural Resources. All bearings, distances and coordinates are based on Louisiana Coordinate System of 1927, (North or South Zone), where applicable.

NOTE: The above description of the Tract nominated for the purpose of acquiring a mineral lease or a geophysical agreement has been provided and corrected, where required, exclusively by the nominating party. Any mineral lease or geophysical agreement selected from this Tract and awarded by the Louisiana State Mineral and Energy Board shall be without warranty of any kind, either express, implied or statutory including, but not limited to, title or the implied warranties of merchantability and fitness for a particular purpose.

An error or omission in the nominating party's Tract description may require that a State mineral lease or geophysical agreement be modified, canceled or abrogated due to the existence of conflicting leases, operating agreements, private claims or other future obligations or conditions within the Tract described. In such case, however, the Louisiana State Mineral and Energy Board shall not be obligated to refund any consideration paid by the Lessee prior to such modification, cancellation or abrogation including, but not limited to, bonuses, rentals and royalties.

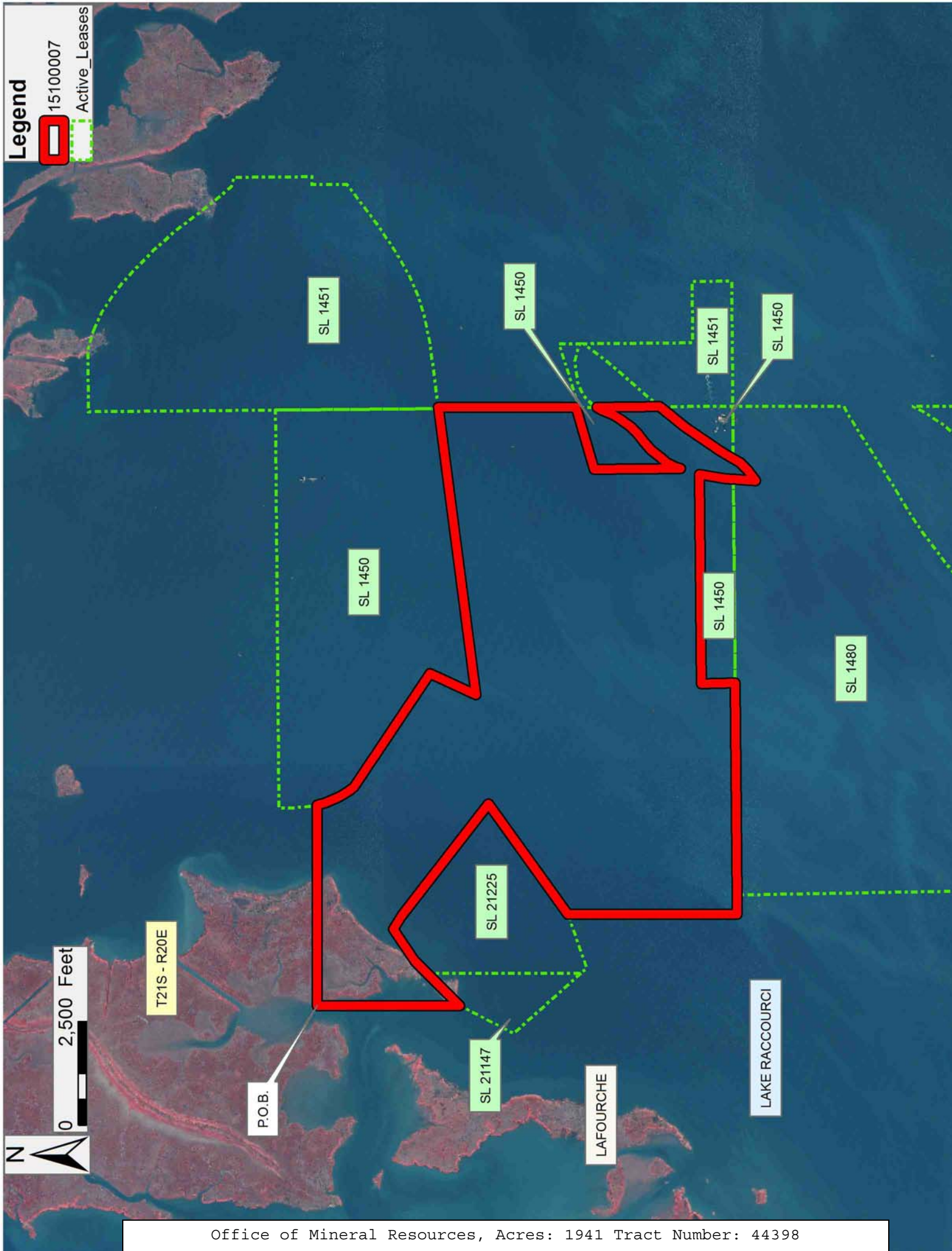
NOTE: The State of Louisiana does hereby reserve, and this lease shall be subject to, the imprescriptible right of surface use in the nature of a servitude in favor of the Department of Natural Resources, including its Offices and Commissions, for the sole purpose of implementing, constructing, servicing and maintaining approved coastal zone management and/or restoration projects. Utilization of any and all rights derived

under this lease by the mineral lessee, its agents, successors or assigns, shall not interfere with nor hinder the reasonable surface use by the Department of Natural Resources, its Offices or Commissions, as herein above reserved.

Applicant: THEOPHILUS OIL, GAS & LAND SERVICES, LLC

Bidder	Cash Payment	Price/ Acre	Rental	Oil	Gas	Other





Legend

15100007

Active\_Leases

0 2,500 Feet

N

T21S - R20E

P.O.B.

SL 1451

SL 1450

SL 21225

SL 21147

SL 1450

SL 1451

SL 1450

SL 1450

SL 1480

LAFOURCHE

LAKE RACCOURCI

**TRACT 44399 - Lafourche Parish, Louisiana**

All of the lands now or formerly constituting the beds and bottoms of all water bodies of every nature and description as to which title is vested in the State of Louisiana, together with all islands arising therein and other lands formed by accretion or by reliction, where allowed by law, excepting tax adjudicated lands, and not presently under mineral lease on October 14, 2015, situated in Lafourche Parish, Louisiana, and more particularly described as follows: Beginning at the most Easterly Northeast corner of State Lease No. 14589, as amended, having Coordinates of X = 2,324,324.27 and Y = 209,095.74; thence East 2,671.69 feet to a point having Coordinates of X = 2,326,995.95 and Y = 209,095.75; thence North 8,422.23 feet to a point having Coordinates of X = 2,326,995.95 and Y = 217,517.98; thence East 9,500.00 feet to a point having Coordinates of X = 2,336,495.95 and Y = 217,517.98; thence South 7,155.18 feet to the Northwest corner of State Lease No. 20783, having Coordinates of X = 2,336,495.95 and Y = 210,362.80; thence South 02 degrees 14 minutes 08 seconds East 6,334.63 feet along the Western boundary of said State Lease No. 20783 to its Southwest corner, having Coordinates of X = 2,336,743.05 and Y = 204,032.99; thence West 12,418.79 feet to a point on the East boundary of said State Lease No. 14589, having Coordinates of X = 2,324,324.27 and Y = 204,032.99; thence North 5,062.76 feet along the Eastern boundary of said State Lease No. 14589 to the point of beginning, **LESS AND EXCEPT** any Vacant State Lands, being lands which are currently still in existence and which have not been severed from the ownership of the State of Louisiana; such excepted Vacant State Lands being portions of Lots 1 and 2, Section 1, Township 22 South, Range 21 East, Louisiana Meridian, situated in Lafourche Parish, Louisiana, as depicted on Sheet 1 (of 6 Sheets) of the survey prepared by Norville E. Shearer, approved by the United States Department of the Interior Bureau of Land Management on June 18, 1959, covering lands transferred to the State of Louisiana pursuant to the Swamp Lands Acts of March 2, 1849 and September 30, 1850, containing approximately **2,490 acres**, all as more particularly outlined on a plat on file in the Office of Mineral Resources, Department of Natural Resources. All bearings, distances and coordinates are based on Louisiana Coordinate System of 1927, (North or South Zone), where applicable.

NOTE: The above description of the Tract nominated for the purpose of acquiring a mineral lease or a geophysical agreement has been provided and corrected, where required, exclusively by the nominating party. Any mineral lease or geophysical agreement selected from this Tract and awarded by the Louisiana State Mineral and Energy Board shall be without warranty of any kind, either express, implied or statutory including, but not limited to, title or the implied warranties of merchantability and fitness for a particular purpose.

An error or omission in the nominating party's Tract description may require that a State mineral lease or geophysical agreement be modified, canceled or abrogated due to the existence of conflicting leases, operating agreements, private claims or other future obligations or

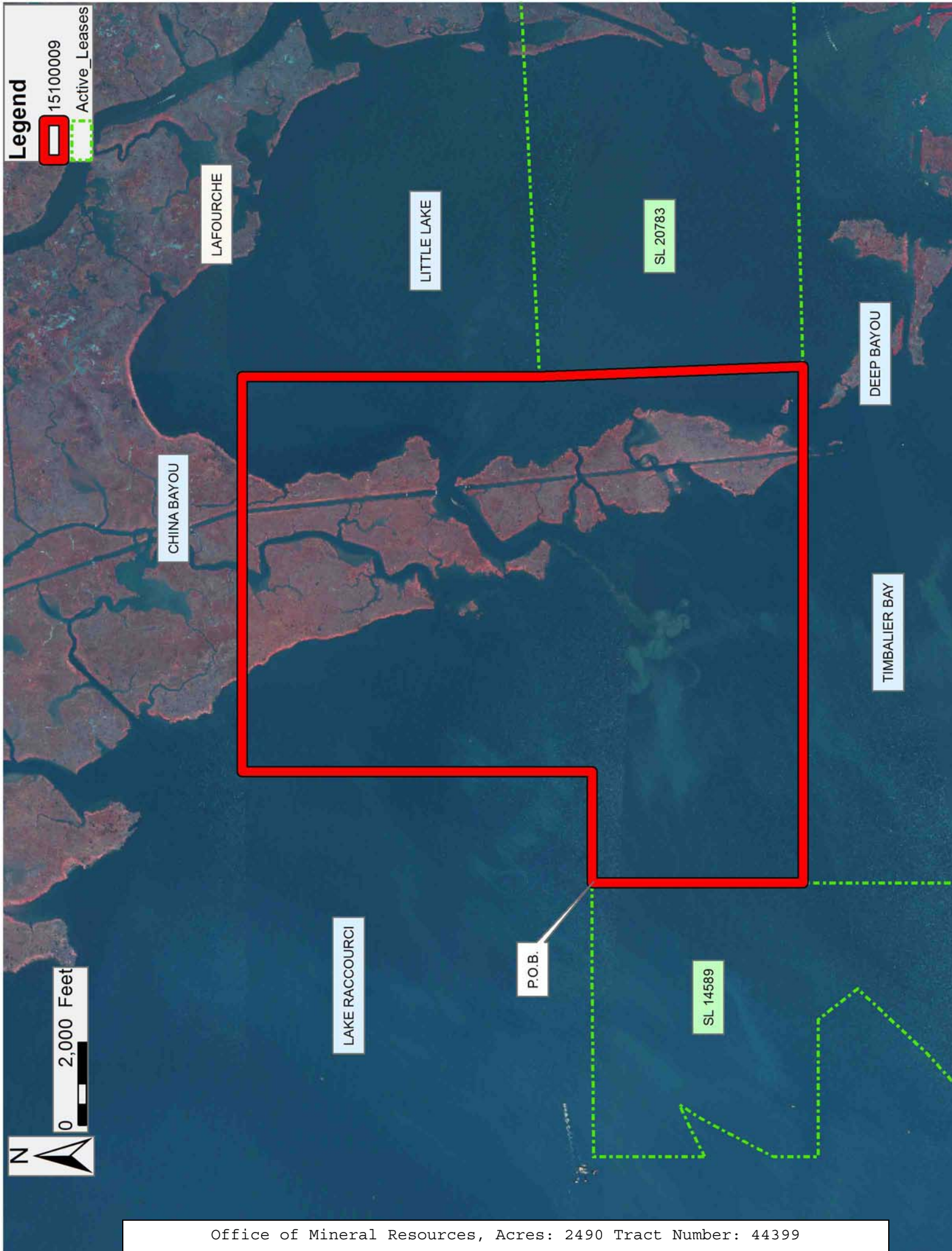
conditions within the Tract described. In such case, however, the Louisiana State Mineral and Energy Board shall not be obligated to refund any consideration paid by the Lessee prior to such modification, cancellation or abrogation including, but not limited to, bonuses, rentals and royalties.

NOTE: The State of Louisiana does hereby reserve, and this lease shall be subject to, the imprescriptible right of surface use in the nature of a servitude in favor of the Department of Natural Resources, including its Offices and Commissions, for the sole purpose of implementing, constructing, servicing and maintaining approved coastal zone management and/or restoration projects. Utilization of any and all rights derived under this lease by the mineral lessee, its agents, successors or assigns, shall not interfere with nor hinder the reasonable surface use by the Department of Natural Resources, its Offices or Commissions, as herein above reserved.

Applicant: THEOPHILUS OIL, GAS & LAND SERVICES, LLC

Bidder	Cash Payment	Price/ Acre	Rental	Oil	Gas	Other







**TRACT 44400 - Lafourche Parish, Louisiana**

All of the lands now or formerly constituting the beds and bottoms of all water bodies of every nature and description as to which title is vested in the State of Louisiana, together with all islands arising therein and other lands formed by accretion or by reliction, where allowed by law, excepting tax adjudicated lands, and not presently under mineral lease on October 14, 2015, situated in Lafourche Parish, Louisiana, and more particularly described as follows: Beginning at a point having Coordinates of X = 2,336,495.95 and Y = 217,517.98; thence Easterly approximately 9,815 feet to a point said to be the Southwest corner of State Lease No. 1908; thence North 88 degrees 59 minutes 54 seconds East 5,023.94 feet along the Southern boundary of said State Lease No. 1908 to a point said to be its Southeast corner; thence Southeasterly approximately 6,462 feet to the Northeast corner of State Lease No. 20783, having Coordinates of X = 2,352,234.99 and Y = 211,137.04; thence South 87 degrees 11 minutes 02 seconds West 15,758.07 feet along the Northern boundary of said State Lease No. 20783 to its Northwest corner, having Coordinates of X = 2,336,495.95 and Y = 210,362.80; thence North 7,155.18 feet to the point of beginning, **LESS AND EXCEPT** any right, title, and interest in lands owned by and not under lease from the State of Louisiana, on behalf of the Lafourche Parish School Board, situated in Section 16, Township 21 South, Range 22 East, Lafourche Parish, Louisiana, contained within the above described tract, (This tract includes only waterbottoms claimed and owned by the state and specifically excludes any land which the state may claim or own and to which the mineral rights are vested in the state), containing approximately **1,253 acres**, all as more particularly outlined on a plat on file in the Office of Mineral Resources, Department of Natural Resources. All bearings, distances and coordinates are based on Louisiana Coordinate System of 1927, (North or South Zone), where applicable.

NOTE: The above description of the Tract nominated for the purpose of acquiring a mineral lease or a geophysical agreement has been provided and corrected, where required, exclusively by the nominating party. Any mineral lease or geophysical agreement selected from this Tract and awarded by the Louisiana State Mineral and Energy Board shall be without warranty of any kind, either express, implied or statutory including, but not limited to, title or the implied warranties of merchantability and fitness for a particular purpose.

An error or omission in the nominating party's Tract description may require that a State mineral lease or geophysical agreement be modified, canceled or abrogated due to the existence of conflicting leases, operating agreements, private claims or other future obligations or conditions within the Tract described. In such case, however, the Louisiana State Mineral and Energy Board shall not be obligated to refund any consideration paid by the Lessee prior to such modification, cancellation or abrogation including, but not limited to, bonuses, rentals and royalties.

NOTE: The State of Louisiana does hereby reserve, and this lease shall be subject to, the imprescriptible right of surface use in the nature of a servitude in favor of the Department of Natural Resources, including its Offices and Commissions, for the sole purpose of implementing, constructing, servicing and maintaining approved coastal zone management and/or restoration projects. Utilization of any and all rights derived under this lease by the mineral lessee, its agents, successors or assigns, shall not interfere with nor hinder the reasonable surface use by the Department of Natural Resources, its Offices or Commissions, as herein above reserved.

Applicant: THEOPHILUS OIL, GAS & LAND SERVICES, LLC

Bidder	Cash Payment	Price/ Acre	Rental	Oil	Gas	Other



**TRACT 44401 - Lafourche Parish, Louisiana**

All of the lands now or formerly constituting the beds and bottoms of all water bodies of every nature and description as to which title is vested in the State of Louisiana, together with all islands arising therein and other lands formed by accretion or by reliction, where allowed by law, excepting tax adjudicated lands, and not presently under mineral lease on October 14, 2015, situated in Lafourche Parish, Louisiana, and more particularly described as follows: Beginning at a point on the Southern boundary of Tract 2 of State Lease No. 1451, also being a point on the Southern boundary of State Lease No. 1450 as amended, having Coordinates of X = 2,317,703.51 and Y = 216,149.25; thence along the boundary of said State Lease No. 1451 the following courses and distances: North 82 degrees 33 minutes 22 seconds East 1,549.55 feet to a point having Coordinates of X = 2,319,240.00 and Y = 216,350.00, North 78 degrees 31 minutes 05 seconds East 653.07 feet to a point having Coordinates of X = 2,319,880.00 and Y = 216,480.00, North 72 degrees 58 minutes 46 seconds East 512.45 feet to a point having Coordinates of X = 2,320,370.00 and Y = 216,630.00, North 66 degrees 48 minutes 05 seconds East 533.10 feet to a point having Coordinates of X = 2,320,860.00 and Y = 216,840.00, North 60 degrees 45 minutes 04 seconds East 573.06 feet to a point having Coordinates of X = 2,321,360.00 and Y = 217,120.00 and North 56 degrees 29 minutes 48 seconds East 851.47 feet to a point having Coordinates of X = 2,322,070.00 and Y = 217,590.00; thence South 89 degrees 09 minutes 45 seconds East 4,926.48 feet to a point having Coordinates of X = 2,326,995.95 and Y = 217,517.98; thence South 8,422.23 feet to a point having Coordinates of X = 2,326,995.95 and Y = 209,095.75; thence West 2,671.69 feet to the Northeast corner of State Lease No. 14589, having Coordinates of X = 2,324,324.26 and Y = 209,095.74; thence along the boundary of said State Lease No. 14589 the following courses and distances: West 2,637.30 feet to a point having Coordinates of X = 2,321,686.97 and Y = 209,095.74 and South 89 degrees 30 minutes 18 seconds West 943.18 feet to a point on the boundary of the Southern portion of said State Lease No. 1451, having Coordinates of X = 2,320,743.83 and Y = 209,087.59; thence along the said boundary of said State Lease No. 1451 the following courses and distances: North 00 degrees 29 minutes 42 seconds West 951.19 feet to a point having Coordinates of X = 2,320,735.61 and Y = 210,038.74, South 89 degrees 30 minutes 18 seconds West 1,476.00 feet to a point having Coordinates of X = 2,319,259.67 and Y = 210,025.99, North 00 degrees 29 minutes 43 seconds West approximately 2,637 feet, Southwesterly approximately 2,387 feet to a point on the boundary of Tract 2 of State Lease No. 1450, as amended; thence North 00 degrees 29 minutes 42 seconds West approximately 1,517 feet along the boundaries of said Tract 2 of State Lease No. 1450 and said Tract 2 of State Lease No. 1451; thence continue along the boundary of said Tract 2 of State Lease No. 1451 the following courses and distances: Northeasterly and Southeasterly approximately 1,727 feet, and North 00 degrees 29 minutes 42 seconds West approximately 501 feet to a point having Coordinates of X = 2,319,231.88 and Y = 213,241.92 and South 72 degrees 40 minutes 49 seconds West 1,600.35 feet to a point on the boundary of said State Lease No. 1450, having Coordinates of X =



2,317,704.10 and Y = 212,765.49; thence North 00 degrees 29 minutes 42 seconds West 67.99 feet to a point having Coordinates of X = 2,317,703.51 and Y = 212,833.48; thence North 3,315.77 feet to the point of beginning, containing approximately **1,577 acres**, all as more particularly outlined on a plat on file in the Office of Mineral Resources, Department of Natural Resources. All bearings, distances and coordinates are based on Louisiana Coordinate System of 1927, (North or South Zone), where applicable.

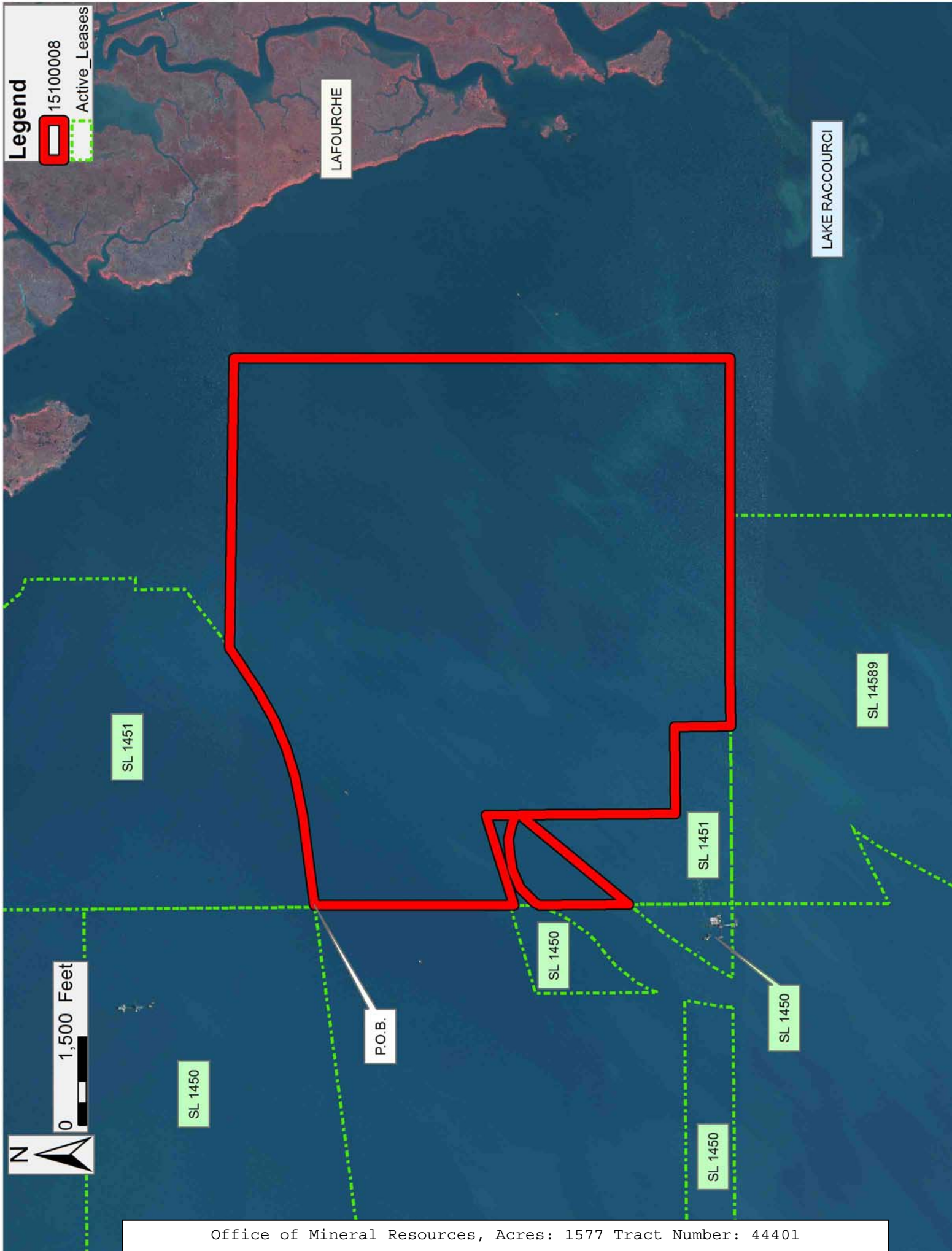
NOTE: The above description of the Tract nominated for the purpose of acquiring a mineral lease or a geophysical agreement has been provided and corrected, where required, exclusively by the nominating party. Any mineral lease or geophysical agreement selected from this Tract and awarded by the Louisiana State Mineral and Energy Board shall be without warranty of any kind, either express, implied or statutory including, but not limited to, title or the implied warranties of merchantability and fitness for a particular purpose.

An error or omission in the nominating party's Tract description may require that a State mineral lease or geophysical agreement be modified, canceled or abrogated due to the existence of conflicting leases, operating agreements, private claims or other future obligations or conditions within the Tract described. In such case, however, the Louisiana State Mineral and Energy Board shall not be obligated to refund any consideration paid by the Lessee prior to such modification, cancellation or abrogation including, but not limited to, bonuses, rentals and royalties.

NOTE: The State of Louisiana does hereby reserve, and this lease shall be subject to, the imprescriptible right of surface use in the nature of a servitude in favor of the Department of Natural Resources, including its Offices and Commissions, for the sole purpose of implementing, constructing, servicing and maintaining approved coastal zone management and/or restoration projects. Utilization of any and all rights derived under this lease by the mineral lessee, its agents, successors or assigns, shall not interfere with nor hinder the reasonable surface use by the Department of Natural Resources, its Offices or Commissions, as herein above reserved.

Bidder	Cash Payment	Price/ Acre	Rental	Oil	Gas	Other

Applicant: THEOPHILUS OIL, GAS & LAND SERVICES, LLC



**TRACT 44402 - Lafourche and Terrebonne Parishes, Louisiana**

All of the lands now or formerly constituting the beds and bottoms of all water bodies of every nature and description as to which title is vested in the State of Louisiana, together with all islands arising therein and other lands formed by accretion or by reliction, where allowed by law, excepting tax adjudicated lands, and not presently under mineral lease on October 14, 2015, situated in Lafourche and Terrebonne Parishes, Louisiana, and more particularly described as follows: Beginning at a point having Coordinates of X = 2,293,214.58 and Y = 207,220.66; thence East 10,871.60 feet to a point having Coordinates of X = 2,304,086.18 and Y = 207,220.66; thence North 1,739.30 feet to a point having Coordinates of X = 2,304,086.18 and Y = 208,959.96; thence East 1,885.30 feet to the Northwest corner of the North portion of State Lease No. 1480, as amended, having Coordinates of X = 2,305,971.46 and Y = 208,959.96; thence South 01 degrees 00 minutes 00 seconds East 6,275.25 feet along the West boundary of said portion of said State Lease No. 1480 to a point having Coordinates of X = 2,306,080.99 and Y = 202,685.67; thence West 7,579.22 feet to a point on the boundary of State Lease No. 20892 as amended, having Coordinates of X = 2,298,501.97 and Y = 202,740.30; thence along the boundary of said State Lease No. 20892 the following courses and distances: North 40 degrees 14 minutes 41 seconds West 1,600.00 feet to a point having Coordinates of X = 2,297,468.29 and Y = 203,961.57, and West 3,191.03 feet to its Northwest corner, also being the Northeast corner of State Lease No. 20893 as amended, having Coordinates of X = 2,294,277.26 and Y = 203,961.57; thence along the boundary of said State Lease No. 20893 the following courses and distances: West 166.88 feet to a point having Coordinates of X = 2,294,110.38 and Y = 203,961.57 and South 47 degrees 51 minutes 38 seconds West 2,820.60 feet to a point having Coordinates of X = 2,292,018.86 and Y = 202,069.12; thence North 3,125.88 feet to a point having Coordinates of X = 2,292,018.86 and Y = 205,195.00; thence East 1,195.72 feet to a point having Coordinates of X = 2,293,214.58 and Y = 205,195.00; thence North 2,025.66 feet to the point of beginning, containing approximately **1,339 acres**, all as more particularly outlined on a plat on file in the Office of Mineral Resources, Department of Natural Resources. All bearings, distances and coordinates are based on Louisiana Coordinate System of 1927, (North or South Zone), where applicable.

NOTE: The above description of the Tract nominated for the purpose of acquiring a mineral lease or a geophysical agreement has been provided and corrected, where required, exclusively by the nominating party. Any mineral lease or geophysical agreement selected from this Tract and awarded by the Louisiana State Mineral and Energy Board shall be without warranty of any kind, either express, implied or statutory including, but not limited to, title or the implied warranties of merchantability and fitness for a particular purpose.

An error or omission in the nominating party's Tract description may require that a State mineral lease or geophysical agreement be modified,

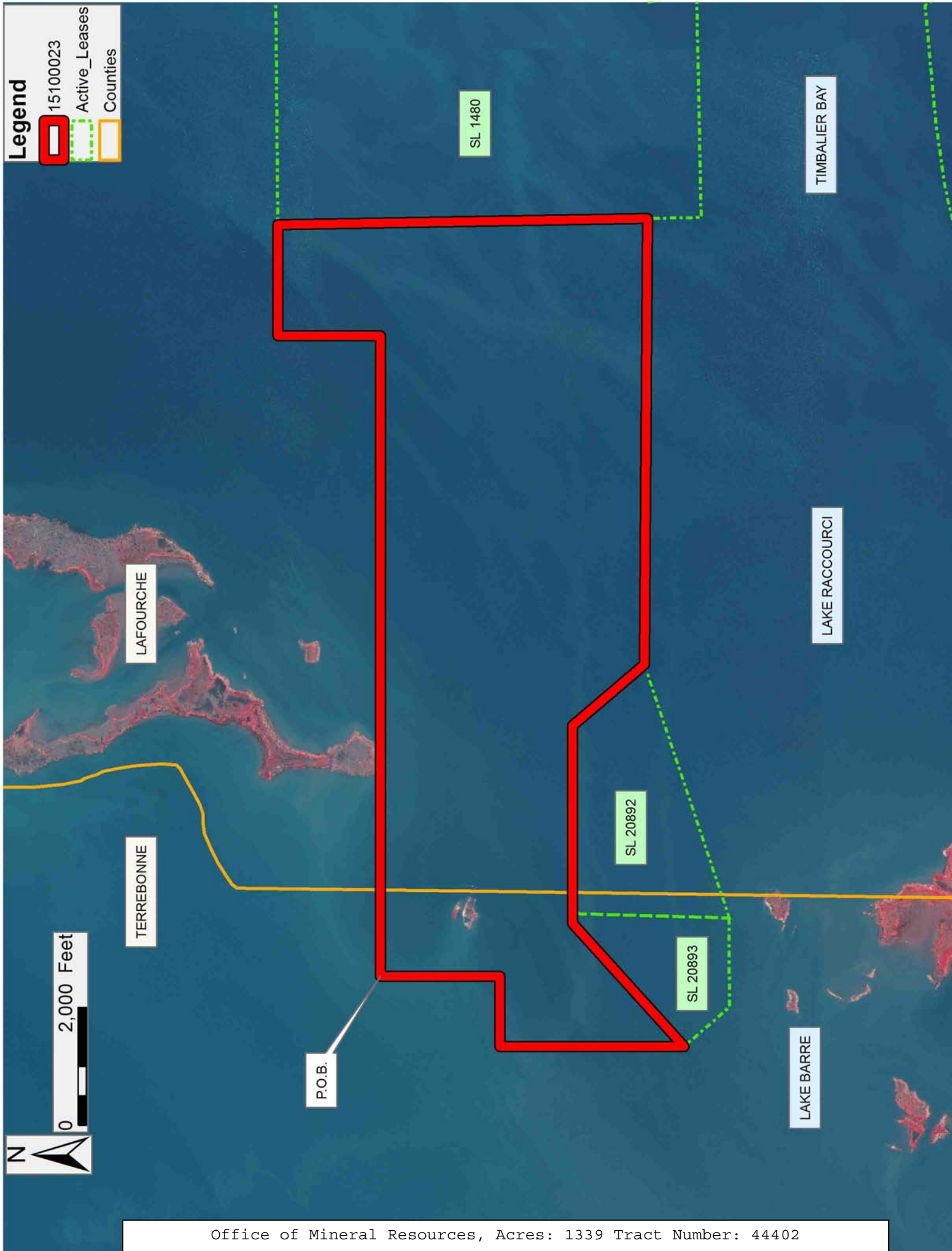


canceled or abrogated due to the existence of conflicting leases, operating agreements, private claims or other future obligations or conditions within the Tract described. In such case, however, the Louisiana State Mineral and Energy Board shall not be obligated to refund any consideration paid by the Lessee prior to such modification, cancellation or abrogation including, but not limited to, bonuses, rentals and royalties.

NOTE: The State of Louisiana does hereby reserve, and this lease shall be subject to, the imprescriptible right of surface use in the nature of a servitude in favor of the Department of Natural Resources, including its Offices and Commissions, for the sole purpose of implementing, constructing, servicing and maintaining approved coastal zone management and/or restoration projects. Utilization of any and all rights derived under this lease by the mineral lessee, its agents, successors or assigns, shall not interfere with nor hinder the reasonable surface use by the Department of Natural Resources, its Offices or Commissions, as herein above reserved.

Applicant: THEOPHILUS OIL, GAS & LAND SERVICES, LLC

Bidder	Cash Payment	Price/ Acre	Rental	Oil	Gas	Other



TRACT 44403 - Lafourche Parish, Louisiana

All of the lands now or formerly constituting the beds and bottoms of all water bodies of every nature and description as to which title is vested in the State of Louisiana, together with all islands arising therein and other lands formed by accretion or by reliction, where allowed by law, excepting tax adjudicated lands, and not presently under mineral lease on October 14, 2015, situated in Lafourche Parish, Louisiana, and more particularly described as follows: Beginning at the Southwest corner of the North portion of State Lease No. 1480, as amended, having Coordinates of X = 2,306,096.88 and Y = 201,774.45; thence along the Southerly boundary of the North portion of said State Lease No. 1480 the following courses and distances: North 88 degrees 50 minutes 07 seconds East 3,735.38 feet, North 05 degrees 13 minutes 26 seconds West 851.15 feet, North 89 degrees 38 minutes 36 seconds East 2,501.08 feet, North 60 degrees 21 minutes 42 seconds East 316.37 feet, North 56 degrees 35 minutes 32 seconds East 563.00 feet, North 53 degrees 31 minutes 51 seconds East 286.00 feet, North 50 degrees 47 minutes 34 seconds East 980.80 feet, North 52 degrees 52 minutes 09 seconds East 878.00 feet, North 56 degrees 33 minutes 36 seconds East 635.10 feet, North 59 degrees 18 minutes 01 seconds East 744.30 feet, North 57 degrees 30 minutes 24 seconds East 1,991.80 feet, North 63 degrees 26 minutes 06 seconds East 219.34 feet to a point being on the Western boundary of State Lease No. 14589, as amended; thence along the Western boundary of said State Lease No. 14589 the following courses and distances: North 63 degrees 26 minutes 06 seconds East 853.97 feet, North 65 degrees 49 minutes 15 seconds East 537.10 feet, South 34 degrees 01 minutes 10 seconds West 482.60 feet, South 28 degrees 36 minutes 38 seconds West 626.50 feet, South 27 degrees 48 minutes 59 seconds West 1,465.34 feet to a point being the Northernmost corner of the East portion of said State Lease No. 1480, thence along the boundaries of the East portion of said State Lease No. 1480 the following courses and distances: South 27 degrees 48 minutes 59 seconds West 377.66 feet, South 33 degrees 23 minutes 19 seconds West 527.00 feet, South 41 degrees 59 minutes 14 seconds West 403.60 feet, South 43 degrees 13 minutes 43 seconds West 686.20 feet, South 48 degrees 21 minutes 59 seconds West 722.50 feet, South 52 degrees 47 minutes 01 seconds West 992.00 feet, South 57 degrees 07 minutes 26 seconds West 976.40 feet, South 58 degrees 02 minutes 09 seconds West 516.60 feet, South 60 degrees 12 minutes 18 seconds West 289.10 feet, South 61 degrees 00 minutes 04 seconds West 152.35 feet, South 03 degrees 41 minutes 29 seconds East 454.47 feet, South 00 degrees 29 minutes 42 seconds East 2,283.26 feet, North 63 degrees 17 minutes 36 seconds East 2,167.69 feet, South 1,172.45 feet, and East 2,193.23 feet to a point on the Western boundary of said State Lease No. 14589, having Coordinates of X = 2,317,736.10 and Y = 198,143.96; thence South 2,082.84 feet along the Western boundary of said State Lease No. 14589 to its Southwest corner having Coordinates of X = 2,317,736.10 and Y = 196,061.12; thence South 89 degrees 30 minutes 18 seconds West 2,812.44 feet to the Northeast corner of the East portion of State Lease No. 3258, as amended, having Coordinates of X = 2,314,923.76

and Y = 196,035.82; thence South 89 degrees 30 minutes 18 seconds West 1,692.73 feet along the North boundary of the East portion of said State Lease No. 3258 to a point having Coordinates of X = 2,313,231.09 and Y = 196,022.20; thence South 89 degrees 30 minutes 18 seconds West 2,696.97 feet to a point on the boundary of the Southern portion of said State Lease No. 1480, also being a point on the boundary of State Lease No. 14703, having Coordinates of X = 2,310,534.22 and Y = 195,998.90; thence along said boundary of said Southern portion of said State Lease No. 1480 the following courses and distances: North 43 degrees 10 minutes 43 seconds East 325.79 feet to a point having Coordinates of X = 2,310,757.15 and Y = 196,236.48, North 31 degrees 20 minutes 43 seconds West 2,037.70 feet to a point having Coordinates of X = 2,309,697.15 and Y = 197,976.77, South 84 degrees 46 minutes 18 seconds West 2,024.53 feet to a corner having Coordinates of X = 2,307,681.04 and Y = 197,792.28, South 81 degrees 46 minutes 24 seconds West 1,105.08 feet to a corner having Coordinates of X = 2,306,587.33 and Y = 197,634.16 and South 77 degrees 05 minutes 33 seconds West 503.16 feet to a point having Coordinates of X = 2,306,096.88 and Y = 197,521.76; thence North 4,252.69 feet to the point of beginning, LESS AND EXCEPT Operating Agreement 0320 as described as follows: Beginning at a point having Coordinates of X = 2,309,715.63 and Y = 202,712.37; thence South 73 degrees 36 minutes 35 seconds East 3,325.63 feet to a point having Coordinates of X = 2,312,906.11 and Y = 201,773.95; thence South 63 degrees 21 minutes 41 seconds West 2,123.35 feet to a point having Coordinates of X = 2,311,008.15 and Y = 200,821.92; thence North 70 degrees 12 minutes 56 seconds West 1,185.32 feet to a point having Coordinates of X = 2,309,892.80 and Y = 201,223.13; thence North 06 degrees 47 minutes 04 seconds West 1,499.74 feet to the point of beginning, from the surface to one hundred feet (100') below the stratigraphic equivalent of the Tex 11 Sand, as seen in the XPLOR State Lease 1480 #2 (Serial Number 224584) between 13,096 feet and 13,190 feet MD, LESS AND EXCEPT any Vacant State Lands, being lands which are not currently beds or bottoms of water bodies, and which have not been severed from the ownership of the State of Louisiana; such excepted Vacant State Lands being portions of Lot 1, Section 17, Township 22 South, Range 21 East, and Lot 1, Section 8, Township 22 South, Range 21 East, Louisiana Meridian, situated in Lafourche Parish, Louisiana, as depicted on Sheets 2 and 4 (of 6 sheets) of the survey prepared by Norville E. Shearer, approved by the United States Department of the Interior Bureau of Land Management on June 18, 1959, covering lands transferred to the State of Louisiana pursuant to the Swamp Lands Acts of March 2, 1849 and September 30, 1850, containing approximately 1,401 acres, all as more particularly outlined on a plat on file in the Office of Mineral Resources, Department of Natural Resources. All bearings, distances and coordinates are based on Louisiana Coordinate System of 1927, (North or South Zone), where applicable.

NOTE: The above description of the Tract nominated for the purpose of acquiring a mineral lease or a geophysical agreement has been provided and corrected, where required, exclusively by the nominating party. Any



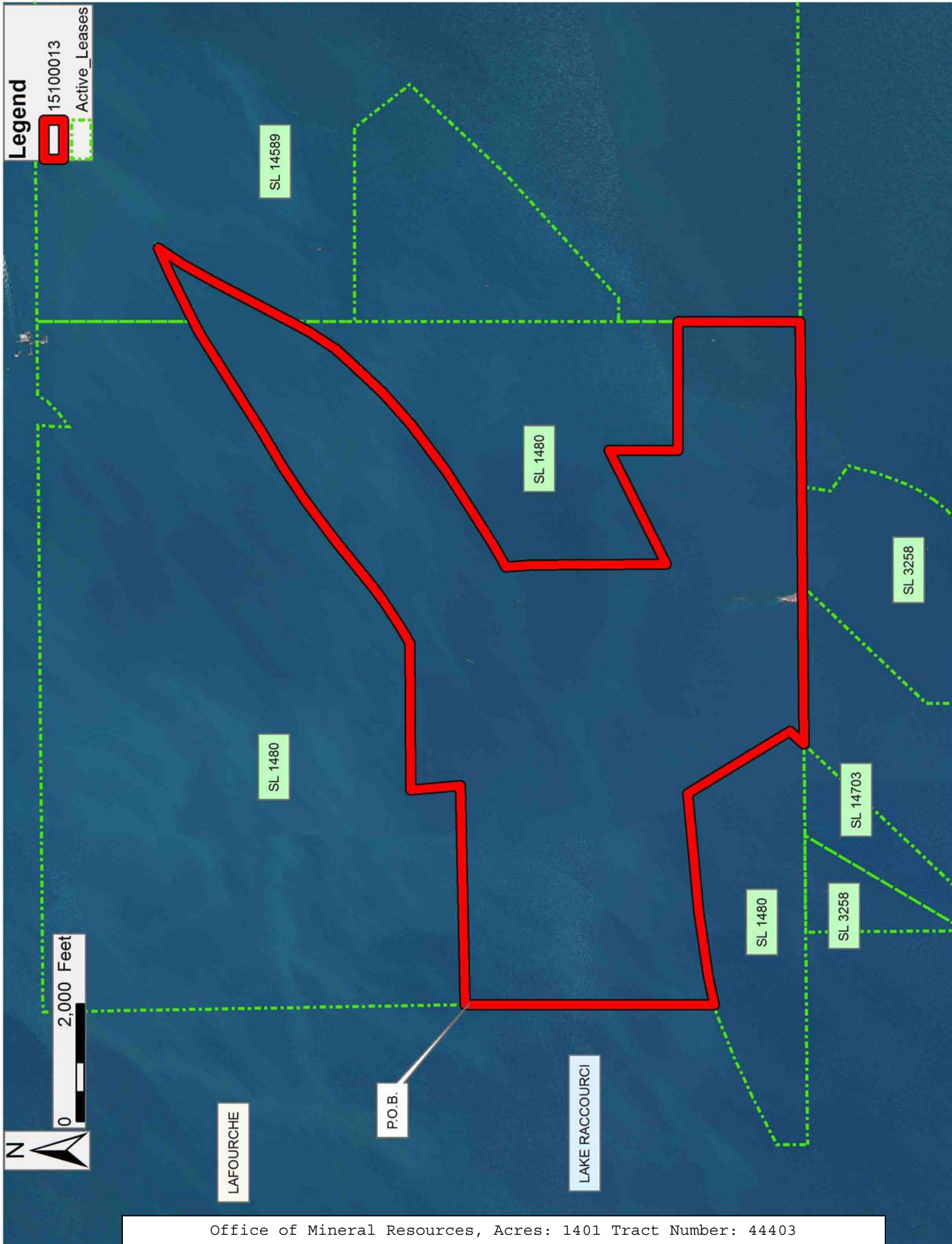
mineral lease or geophysical agreement selected from this Tract and awarded by the Louisiana State Mineral and Energy Board shall be without warranty of any kind, either express, implied or statutory including, but not limited to, title or the implied warranties of merchantability and fitness for a particular purpose.

An error or omission in the nominating party's Tract description may require that a State mineral lease or geophysical agreement be modified, canceled or abrogated due to the existence of conflicting leases, operating agreements, private claims or other future obligations or conditions within the Tract described. In such case, however, the Louisiana State Mineral and Energy Board shall not be obligated to refund any consideration paid by the Lessee prior to such modification, cancellation or abrogation including, but not limited to, bonuses, rentals and royalties.

NOTE: The State of Louisiana does hereby reserve, and this lease shall be subject to, the imprescriptible right of surface use in the nature of a servitude in favor of the Department of Natural Resources, including its Offices and Commissions, for the sole purpose of implementing, constructing, servicing and maintaining approved coastal zone management and/or restoration projects. Utilization of any and all rights derived under this lease by the mineral lessee, its agents, successors or assigns, shall not interfere with nor hinder the reasonable surface use by the Department of Natural Resources, its Offices or Commissions, as herein above reserved.

Applicant: THEOPHILUS OIL, GAS & LAND SERVICES, LLC

Bidder	Cash Payment	Price/ Acre	Rental	Oil	Gas	Other



**TRACT 44404 - Terrebonne Parish, Louisiana**

All of the lands now or formerly constituting the beds and bottoms of all water bodies of every nature and description as to which title is vested in the State of Louisiana, together with all islands arising therein and other lands formed by accretion or by reliction, where allowed by law, excepting tax adjudicated lands, and not presently under mineral lease on October 14, 2015, situated in Terrebonne Parish, Louisiana, and more particularly described as follows: Beginning at the Northeast corner of State Lease No. 21151 having Coordinates of X = 2,282,375.00 and Y = 205,195.00; thence East 9,643.86 feet to a point having Coordinates of X = 2,292,018.86 and Y = 205,195.00; thence South 3,125.88 feet to a point on the West boundary of State Lease No. 20893, as amended, having Coordinates of X = 2,292,018.86 and Y = 202,069.12; thence South 40 degrees 49 minutes 57 seconds East 1,022.26 feet along the boundary of said State Lease No. 20893, to its Southwest corner, also being the Northwest corner of State Lease No. 20894, as amended, having Coordinates of X = 2,292,687.27 and Y = 201,295.65; thence along the boundary of said State Lease No. 20894 the following courses and distances: South 40 degrees 49 minutes 57 seconds East 517.59 feet to a point having Coordinates of X = 2,293,025.69 and Y = 200,904.03 and North 71 degrees 27 minutes 47 seconds East 1,243.44 feet to its most Eastern corner, also being the approximate Northwest corner of State Lease Nos. 3278, as amended and 3723, as amended, having Coordinates of X = 2,294,204.62 and Y = 201,299.35; thence South approximately 4,282 feet along said boundary of said State Lease Nos. 3278 and to a point having a Coordinate of Y = 197,017.02; thence West approximately 9,916 feet to a point on the boundary of State Lease No. 199, as amended, having Coordinates of X = 2,284,288.44 and Y = 197,017.02; thence along the boundary of said State Lease No. 199 the following courses and distances: South 89 degrees 34 minutes 50 seconds West 2,600.00 feet to a point having Coordinates of X = 2,281,688.51 and Y = 196,997.99; North 00 degrees 25 minutes 10 seconds West 1,200.00 feet to a corner having Coordinates of X = 2,281,679.72 and Y = 198,197.96; South 89 degrees 34 minutes 50 seconds West 326.96 feet to a point having Coordinates of X = 2,281,352.77 and Y = 198,195.57; North 18 degrees 18 minutes 50 seconds East 239.08 feet to a point having Coordinates of X = 2,281,427.90 and Y = 198,422.54; North 10 degrees 11 minutes 50 seconds East 162.80 feet to a point having Coordinates of X = 2,281,456.72 and Y = 198,582.77; North 00 degrees 25 minute 10 seconds West 65.00 feet to a point having Coordinates of X = 2,281,456.24 and Y = 198,647.76; North 01 degrees 45 minutes 10 seconds West 215.10 feet to a point having Coordinates of X = 2,281,449.66 and Y = 198,862.76; North 07 degrees 08 minutes 10 seconds West 85.60 feet to a point having Coordinates of X = 2,281,439.03 and Y = 198,947.70; North 13 degrees 06 minutes 10 seconds West 205.00 feet to a point having Coordinates of X = 2,281,392.56 and Y = 199,147.36; North 09 degrees 53 minutes 10 seconds West 152.10 feet to a point having Coordinates of X = 2,281,366.44 and Y = 199,297.20; North 00 degrees 25 minutes 10 seconds West 80.00 feet to a point having Coordinates of X = 2,281,365.86 and Y = 199,377.20; North 08 degrees 15 minutes 50 seconds East 74.20 feet to a point having Coordinates of X = 2,281,376.52 and Y = 199,450.63; North 19

degrees 57 minutes 50 seconds East 369.90 feet to a point having Coordinates of X = 2,281,502.82 and Y = 199,798.30; South 58 degrees 47 minutes 50 seconds West 273.50 feet to a point having Coordinates of X = 2,281,268.88 and Y = 199,656.61; South 48 degrees 43 minutes 50 seconds West 244.60 feet to a point having Coordinates of X = 2,281,085.04 and Y = 199,495.27; South 44 degrees 34 minutes 50 seconds West 282.90 feet to a point having Coordinates of X = 2,280,886.46 and Y = 199,293.77; South 54 degrees 47 minutes 50 seconds West 219.20 feet to a point having Coordinates of X = 2,280,707.35 and Y = 199,167.41; North 04 degrees 08 minutes 50 seconds East 125.40 feet to a point having Coordinates of X = 2,280,716.42 and Y = 199,292.48; North 10 degrees 31 minutes 50 seconds East 157.90 feet to a point having Coordinates of X = 2,280,745.28 and Y = 199,447.72; North 14 degrees 59 minutes 50 seconds East 150.40 feet to a point having Coordinates of X = 2,280,784.20 and Y = 199,593.00; North 17 degrees 19 minutes 50 seconds East 131.30 feet to a point having Coordinates of X = 2,280,823.31 and Y = 199,718.34; North 24 degrees 16 minutes 50 seconds East 275.20 feet to a point having Coordinates of X = 2,280,936.47 and Y = 199,969.20; North 24 degrees 08 minutes 50 seconds East 192.40 feet to a point having Coordinates of X = 2,281,015.18 and Y = 200,144.76; South 76 degrees 31 minutes 50 seconds West 354.10 feet to a point having Coordinates of X = 2,280,670.82 and Y = 200,062.28; North 33 degrees 47 minutes 50 seconds East 302.30 feet to a point having Coordinates of X = 2,280,838.98 and Y = 200,313.50; South 73 degrees 25 minutes 50 seconds West 197.80 feet to a point having Coordinates of X = 2,280,649.39 and Y = 200,257.08; North 20 degrees 56 minutes 50 seconds East 123.50 feet to a point having Coordinates of X = 2,280,693.54 and Y = 200,372.43; North 83 degrees 47 minutes 10 seconds West 432.90 feet to a point having Coordinates of X = 2,280,263.19 and Y = 200,419.28; North 81 degrees 21 minutes 10 seconds West 349.30 feet to a point having Coordinates of X = 2,279,917.86 and Y = 200,471.80; North 17 degrees 14 minutes 50 seconds East 477.50 feet to a point having Coordinates of X = 2,280,059.43 and Y = 200,927.83; North 81 degrees 26 minutes 10 seconds West 256.20 feet to a point having Coordinates of X = 2,279,806.09 and Y = 200,965.98; North 80 degrees 44 minutes 10 seconds West 357.00 feet to a point having Coordinates of X = 2,279,453.75 and Y = 201,023.45; North 78 degrees 49 minutes 10 seconds West 189.65 feet to a point having Coordinates of X = 2,279,267.70 and Y = 201,060.22; North 00 degrees 25 minutes 10 seconds West 951.69 feet to a point having Coordinates of X = 2,279,260.73 and Y = 202,011.89; North 20 degrees 01 minutes 49 seconds East 288.31 feet to a point having Coordinates of X = 2,279,359.48 and Y = 202,282.76, and North 23 degrees 07 minutes 49 seconds East 127.49 feet to a point on the boundary of State Lease No. 21151, having Coordinates of X = 2,279,409.56 and Y = 202,400.00; thence along said boundary of said State Lease No. 21151, the following courses and distances: East 2,965.44 feet to a point having Coordinates of X = 2,282,375.00 and Y = 202,400.00 and North 2,795.00 feet to the point of beginning, **LESS AND EXCEPT** any Vacant Sate Lands, being lands which are not currently beds or bottoms of water bodies, and which have not been severed from the ownership of the State of Louisiana; such excepted Vacant State Lands being portions of



Lots 1 and 2, Section 34, Township 21 South, Range 20 East, Louisiana Meridian, situated in Lafourche Parish, Louisiana, as depicted on Sheet 2 (of 2 sheets) of the survey prepared by Norville E. Shearer, approved by the United States Department of the Interior Bureau of Land Management on June 18, 1959, covering lands transferred to the State of Louisiana pursuant to the Swamp Lands Acts of March 2, 1849 and September 30, 1850, containing approximately **2,189 acres**, all as more particularly outlined on a plat on file in the Office of Mineral Resources, Department of Natural Resources. All bearings, distances and coordinates are based on Louisiana Coordinate System of 1927, (North or South Zone), where applicable.

NOTE: The above description of the Tract nominated for the purpose of acquiring a mineral lease or a geophysical agreement has been provided and corrected, where required, exclusively by the nominating party. Any mineral lease or geophysical agreement selected from this Tract and awarded by the Louisiana State Mineral and Energy Board shall be without warranty of any kind, either express, implied or statutory including, but not limited to, title or the implied warranties of merchantability and fitness for a particular purpose.

An error or omission in the nominating party's Tract description may require that a State mineral lease or geophysical agreement be modified, canceled or abrogated due to the existence of conflicting leases, operating agreements, private claims or other future obligations or conditions within the Tract described. In such case, however, the Louisiana State Mineral and Energy Board shall not be obligated to refund any consideration paid by the Lessee prior to such modification, cancellation or abrogation including, but not limited to, bonuses, rentals and royalties.

NOTE: The State of Louisiana does hereby reserve, and this lease shall be subject to, the imprescriptible right of surface use in the nature of a servitude in favor of the Department of Natural Resources, including its Offices and Commissions, for the sole purpose of implementing, constructing, servicing and maintaining approved coastal zone management and/or restoration projects. Utilization of any and all rights derived under this lease by the mineral lessee, its agents, successors or assigns, shall not interfere with nor hinder the reasonable surface use by the Department of Natural Resources, its Offices or Commissions, as herein above reserved.

Applicant: THEOPHILUS OIL, GAS & LAND SERVICES, LLC

Bidder	Cash Payment	Price/ Acre	Rental	Oil	Gas	Other

