

TRACT 44385 - Terrebonne Parish, Louisiana

All of the lands now or formerly constituting the beds and bottoms of all water bodies of every nature and description as to which title is vested in the State of Louisiana, together with all islands arising therein and other lands formed by accretion or by reliction, where allowed by law, excepting tax adjudicated lands, and not presently under mineral lease on October 14, 2015, situated in Terrebonne Parish, Louisiana, and more particularly described as follows: Beginning at a point having Coordinates of X = 2,203,701.23 and Y = 251,925.00; thence East 11,610.40 feet to a point having Coordinates of X = 2,215,311.63 and Y = 251,925.00; thence South 2,000.00 feet to a point on the Northern boundary of State Lease No. 17895 having Coordinates of X = 2,215,311.63 and Y = 249,925.00; thence following the boundary of said State Lease No. 17895 the following courses: West 1,511.79 feet to a point having Coordinates of X = 2,213,799.84 and Y = 249,925.00, thence South 1,142.56 feet to a point having Coordinates of X = 2,213,799.84 and Y = 248,782.44, thence West 1,776.65 feet to a point having Coordinates of X = 2,212,023.19 and Y = 248,782.44, thence South 838.84 feet to a point having Coordinates of X = 2,212,023.19 and Y = 247,943.60, thence West 1,063.19 feet to a point having Coordinates of X = 2,210,960.00 and Y = 247,943.60, thence South 667.34 feet to a point along the most Western boundary having Coordinates of X = 2,210,960.00 and Y = 247,276.26; thence West 7,258.77 feet to a point having Coordinates of X = 2,203,701.23 and Y = 247,276.26; thence North 4,648.74 feet to the point of beginning, containing approximately **844 acres**, all as more particularly outlined on a plat on file in the Office of Mineral Resources, Department of Natural Resources. All bearings, distances and coordinates are based on Louisiana Coordinate System of 1927, (North or South Zone), where applicable.

NOTE: The above description of the Tract nominated for the purpose of acquiring a mineral lease or a geophysical agreement has been provided and corrected, where required, exclusively by the nominating party. Any mineral lease or geophysical agreement selected from this Tract and awarded by the Louisiana State Mineral and Energy Board shall be without warranty of any kind, either express, implied or statutory including, but not limited to, title or the implied warranties of merchantability and fitness for a particular purpose.

An error or omission in the nominating party's Tract description may require that a State mineral lease or geophysical agreement be modified, canceled or abrogated due to the existence of conflicting leases, operating agreements, private claims or other future obligations or conditions within the Tract described. In such case, however, the Louisiana State Mineral and Energy Board shall not be obligated to refund any consideration paid by the Lessee prior to such modification, cancellation or abrogation including, but not limited to, bonuses, rentals and royalties.

NOTE: The State of Louisiana does hereby reserve, and this lease shall be subject to, the imprescriptible right of surface use in the nature of a

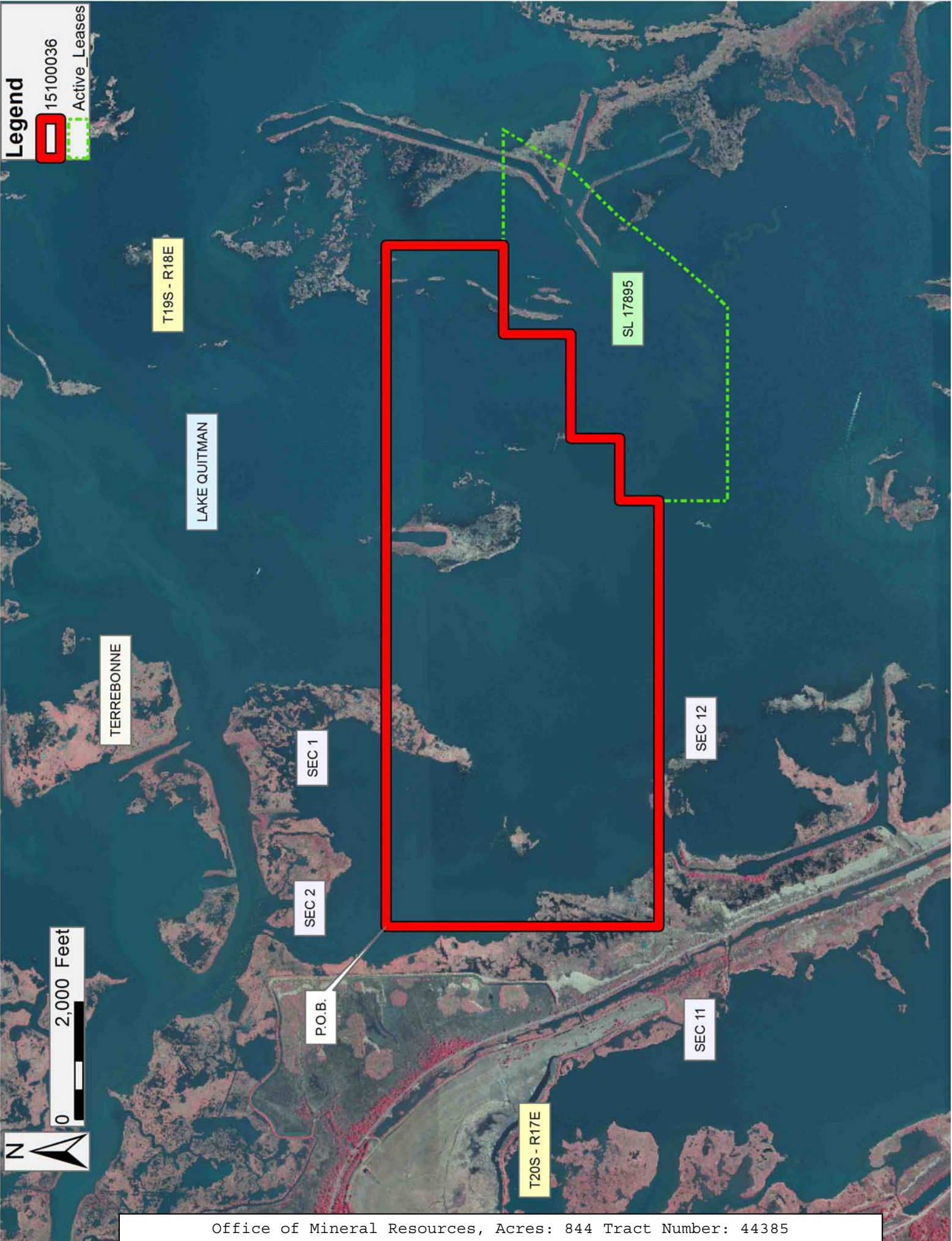
servitude in favor of the Department of Natural Resources, including its Offices and Commissions, for the sole purpose of implementing, constructing, servicing and maintaining approved coastal zone management and/or restoration projects. Utilization of any and all rights derived under this lease by the mineral lessee, its agents, successors or assigns, shall not interfere with nor hinder the reasonable surface use by the Department of Natural Resources, its Offices or Commissions, as herein above reserved.

Applicant: ACADIAN LAND SERVICES, L.L.C.

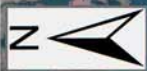
Bidder	Cash Payment	Price/Acre	Rental	Oil	Gas	Other

Legend

- 15100036
- Active_Leases



0 2,000 Feet



TRACT 44386 - Terrebonne Parish, Louisiana

All of the lands now or formerly constituting the beds and bottoms of all water bodies of every nature and description as to which title is vested in the State of Louisiana, together with all islands arising therein and other lands formed by accretion or by reliction, where allowed by law, excepting tax adjudicated lands, and not presently under mineral lease on October 14, 2015, situated in Terrebonne Parish, Louisiana, and more particularly described as follows: Beginning at a point having Coordinates of X = 2,203,701.23 and Y = 247,276.26; thence East 7,258.77 feet to a point on the most Western boundary of State Lease No. 17895 having Coordinates of X = 2,210,960.00 and Y = 247,276.26; thence South 1,172.10 feet along the boundary of said State Lease No. 17895 to its most Southwestern corner having Coordinates of X = 2,210,960.00 and Y = 246,104.16; thence South 6,590.54 feet to a point having Coordinates of X = 2,210,960.00 and Y = 239,513.63; thence West 7,258.77 feet to a point having Coordinates of X = 2,203,701.23 and Y = 239,513.63; thence North 7,762.64 feet to the point of beginning (This tract includes only waterbottoms claimed and owned by the state and specifically excludes any land which the state may claim or own and to which the mineral rights are vested in the state), containing approximately **659 acres**, all as more particularly outlined on a plat on file in the Office of Mineral Resources, Department of Natural Resources. All bearings, distances and coordinates are based on Louisiana Coordinate System of 1927, (North or South Zone), where applicable.

NOTE: The above description of the Tract nominated for the purpose of acquiring a mineral lease or a geophysical agreement has been provided and corrected, where required, exclusively by the nominating party. Any mineral lease or geophysical agreement selected from this Tract and awarded by the Louisiana State Mineral and Energy Board shall be without warranty of any kind, either express, implied or statutory including, but not limited to, title or the implied warranties of merchantability and fitness for a particular purpose.

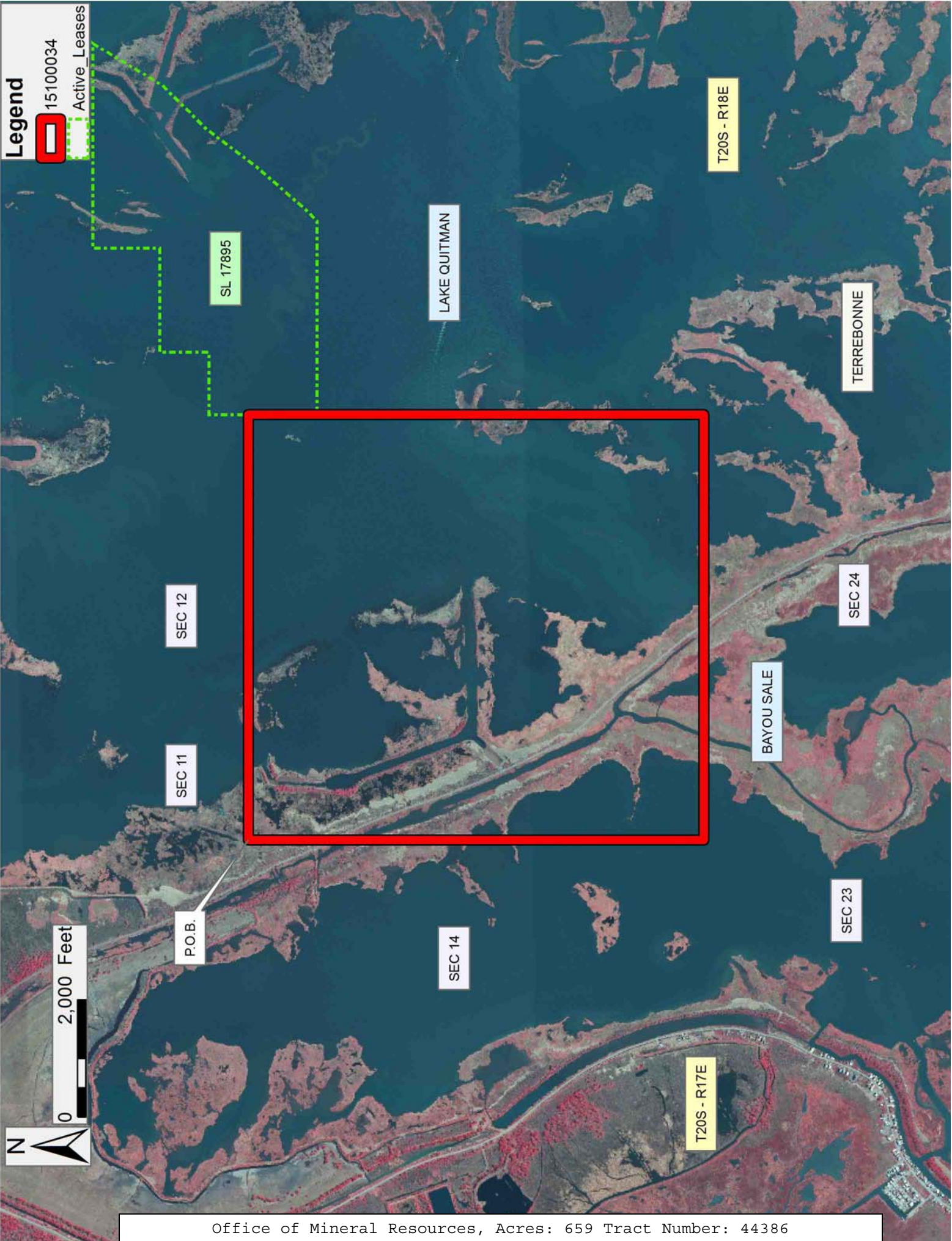
An error or omission in the nominating party's Tract description may require that a State mineral lease or geophysical agreement be modified, canceled or abrogated due to the existence of conflicting leases, operating agreements, private claims or other future obligations or conditions within the Tract described. In such case, however, the Louisiana State Mineral and Energy Board shall not be obligated to refund any consideration paid by the Lessee prior to such modification, cancellation or abrogation including, but not limited to, bonuses, rentals and royalties.

NOTE: The State of Louisiana does hereby reserve, and this lease shall be subject to, the imprescriptible right of surface use in the nature of a servitude in favor of the Department of Natural Resources, including its Offices and Commissions, for the sole purpose of implementing, constructing, servicing and maintaining approved coastal zone management

and/or restoration projects. Utilization of any and all rights derived under this lease by the mineral lessee, its agents, successors or assigns, shall not interfere with nor hinder the reasonable surface use by the Department of Natural Resources, its Offices or Commissions, as herein above reserved.

Applicant: ACADIAN LAND SERVICES, L.L.C.

Bidder	Cash Payment	Price/Acre	Rental	Oil	Gas	Other



TRACT 44387 - Terrebonne Parish, Louisiana

All of the lands now or formerly constituting the beds and bottoms of all water bodies of every nature and description as to which title is vested in the State of Louisiana, together with all islands arising therein and other lands formed by accretion or by reliction, where allowed by law, excepting tax adjudicated lands, and not presently under mineral lease on October 14, 2015, situated in Terrebonne Parish, Louisiana, and more particularly described as follows: Beginning at a point having Coordinates of X = 2,218,218.77 and Y = 247,276.26; thence Southerly approximately 2,944 feet to a point said to be the Northwest corner of State Lease No. 2395, as amended; thence South 4,800 feet along the Western boundary of said State Lease No. 2395 to a point said to be its Southwest corner; thence Westerly approximately 7,215 feet to a point having Coordinates of X = 2,210,960.00 and Y = 239,513.63; thence North 6,590.54 feet to the most Southwestern point of State Lease No. 17895 having Coordinates of X = 2,210,960.00 and Y = 246,104.16; thence following the boundary of said State Lease No. 17895 the following courses: East 3,295.06 feet to a point having Coordinates of X = 2,214,255.06 and Y = 246,104.16, North 45 degrees 18 minutes 01 second East 281.92 feet to a point having Coordinates of X = 2,214,455.45 and Y = 246,302.46, North 41 degrees 03 minutes 00 seconds East 1,080.00 feet to a point having Coordinates of X = 2,215,164.71 and Y = 247,116.92, North 37 degrees 09 minutes 52 seconds East 199.94 feet to a point having Coordinates of X = 2,215,285.49 and Y = 247,276.26; thence East 2,933.28 feet to the point of beginning (This tract includes only waterbottoms claimed and owned by the state and specifically excludes any land which the state may claim or own and to which the mineral rights are vested in the state), containing approximately **837 acres**, all as more particularly outlined on a plat on file in the Office of Mineral Resources, Department of Natural Resources. All bearings, distances and coordinates are based on Louisiana Coordinate System of 1927, (North or South Zone), where applicable.

NOTE: The above description of the Tract nominated for the purpose of acquiring a mineral lease or a geophysical agreement has been provided and corrected, where required, exclusively by the nominating party. Any mineral lease or geophysical agreement selected from this Tract and awarded by the Louisiana State Mineral and Energy Board shall be without warranty of any kind, either express, implied or statutory including, but not limited to, title or the implied warranties of merchantability and fitness for a particular purpose.

An error or omission in the nominating party's Tract description may require that a State mineral lease or geophysical agreement be modified, canceled or abrogated due to the existence of conflicting leases, operating agreements, private claims or other future obligations or conditions within the Tract described. In such case, however, the Louisiana State Mineral and Energy Board shall not be obligated to refund any consideration paid by the Lessee prior to such modification,

cancellation or abrogation including, but not limited to, bonuses, rentals and royalties.

NOTE: The State of Louisiana does hereby reserve, and this lease shall be subject to, the imprescriptible right of surface use in the nature of a servitude in favor of the Department of Natural Resources, including its Offices and Commissions, for the sole purpose of implementing, constructing, servicing and maintaining approved coastal zone management and/or restoration projects. Utilization of any and all rights derived under this lease by the mineral lessee, its agents, successors or assigns, shall not interfere with nor hinder the reasonable surface use by the Department of Natural Resources, its Offices or Commissions, as herein above reserved.

Applicant: ACADIAN LAND SERVICES, L.L.C.

Bidder	Cash Payment	Price/Acre	Rental	Oil	Gas	Other



TRACT 44388 - Terrebonne Parish, Louisiana

All of the lands now or formerly constituting the beds and bottoms of all water bodies of every nature and description as to which title is vested in the State of Louisiana, together with all islands arising therein and other lands formed by accretion or by reliction, where allowed by law, excepting tax adjudicated lands, and not presently under mineral lease on October 14, 2015, situated in Terrebonne Parish, Louisiana, and more particularly described as follows: Beginning at a point having Coordinates of X = 2,203,701.23 and Y = 239,513.63; thence East approximately 14,474 feet to a point said to be the Southwest corner of State Lease No. 2395, as amended; thence in a Southeasterly direction approximately 2,670 feet along the South boundary of said State Lease No. 2395 to a point said to be the Southeast corner of State Lease No. 2395 and the Southwest corner of State Lease No. 2906, as amended; thence South approximately 4,618 feet to a point having Coordinates of X = 2,220,774.33 and Y = 234,403.21; thence West 17,073.10 feet to a point having Coordinates of X = 2,203,701.23 and Y = 234,403.21; thence North 5,110.41 feet to the point of beginning (This tract includes only waterbottoms claimed and owned by the state and specifically excludes any land which the state may claim or own and to which the mineral rights are vested in the state), containing approximately **318 acres**, all as more particularly outlined on a plat on file in the Office of Mineral Resources, Department of Natural Resources. All bearings, distances and coordinates are based on Louisiana Coordinate System of 1927, (North or South Zone), where applicable.

NOTE: The above description of the Tract nominated for the purpose of acquiring a mineral lease or a geophysical agreement has been provided and corrected, where required, exclusively by the nominating party. Any mineral lease or geophysical agreement selected from this Tract and awarded by the Louisiana State Mineral and Energy Board shall be without warranty of any kind, either express, implied or statutory including, but not limited to, title or the implied warranties of merchantability and fitness for a particular purpose.

An error or omission in the nominating party's Tract description may require that a State mineral lease or geophysical agreement be modified, canceled or abrogated due to the existence of conflicting leases, operating agreements, private claims or other future obligations or conditions within the Tract described. In such case, however, the Louisiana State Mineral and Energy Board shall not be obligated to refund any consideration paid by the Lessee prior to such modification, cancellation or abrogation including, but not limited to, bonuses, rentals and royalties.

NOTE: The State of Louisiana does hereby reserve, and this lease shall be subject to, the imprescriptible right of surface use in the nature of a servitude in favor of the Department of Natural Resources, including its Offices and Commissions, for the sole purpose of implementing, constructing, servicing and maintaining approved coastal zone management

and/or restoration projects. Utilization of any and all rights derived under this lease by the mineral lessee, its agents, successors or assigns, shall not interfere with nor hinder the reasonable surface use by the Department of Natural Resources, its Offices or Commissions, as herein above reserved.

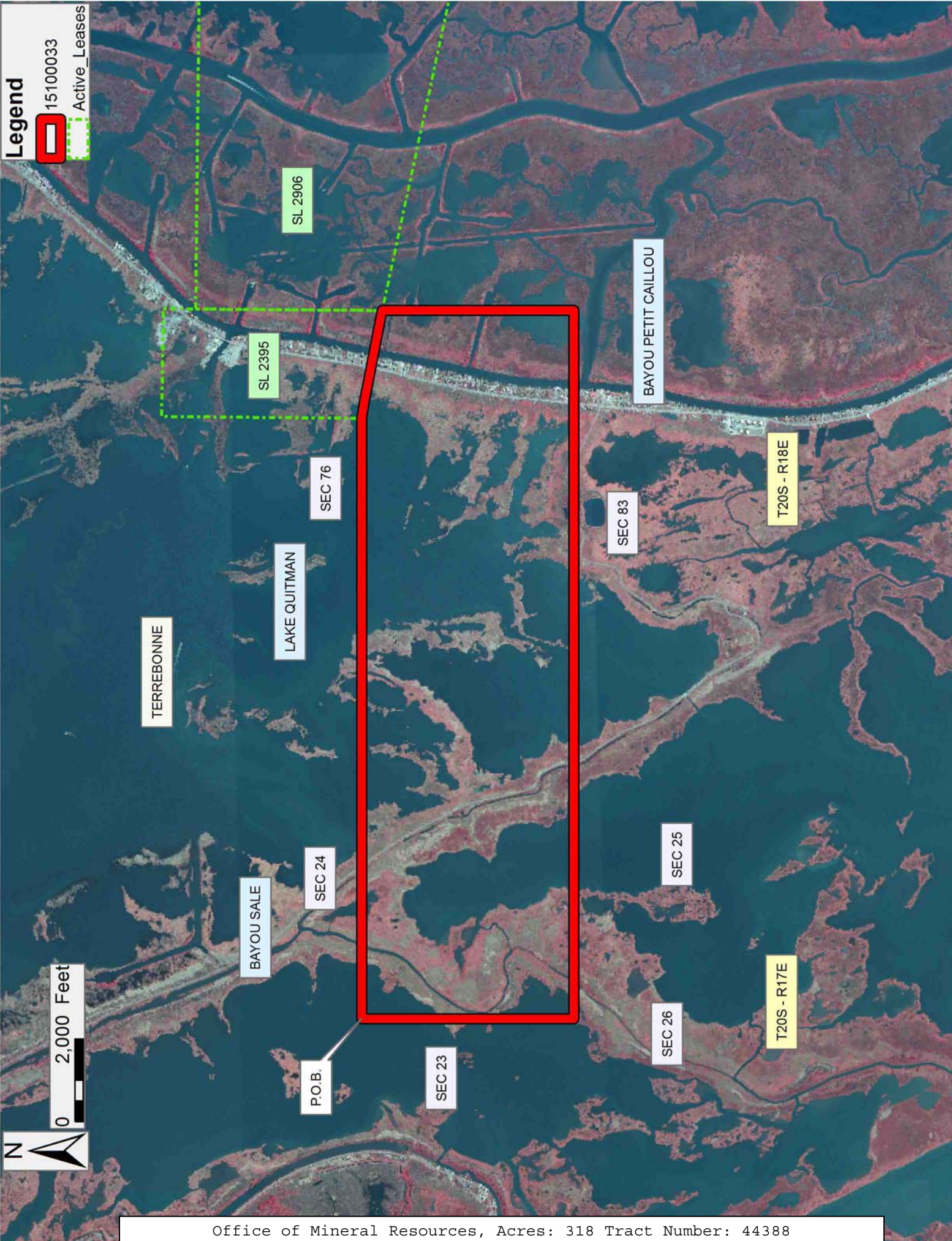
Applicant: ACADIAN LAND SERVICES, L.L.C.

Bidder	Cash Payment	Price/Acre	Rental	Oil	Gas	Other

Legend

15100033

Active_Leases



TERREBONNE

LAKE QUITMAN

SEC 76

BAYOU SALE

SEC 24

P.O.B.

SEC 23

BAYOU PETIT CAILLOU

SEC 83

T20S - R18E

SEC 25

T20S - R17E

SEC 26



TRACT 44389 - Plaquemines Parish, Louisiana

All of the lands now or formerly constituting the beds and bottoms of all water bodies of every nature and description as to which title is vested in the State of Louisiana, together with all islands arising therein and other lands formed by accretion or by reliction, where allowed by law, excepting tax adjudicated lands, and not presently under mineral lease on October 14, 2015, situated in Plaquemines Parish, Louisiana, and more particularly described as follows:

Beginning at a point having Coordinates of X = 2,603,861.72 and Y 225,000.61; thence North 88 degrees 55 minutes 53 seconds East 18,480.00 feet to a point having Coordinates of X = 2,622,338.50 and Y = 225,345.26; thence South 01 degrees 25 minutes 48 seconds East 10,371.27 feet to a point having Coordinates of X = 2,622,597.32 and Y = 214,977.22; thence South 88 degrees 55 minutes 53 seconds West 18,480.00 to a point having Coordinates of X = 2,604,120.54 and Y = 214,632.57; thence North 01 degrees 25 minutes 48 seconds West 10,371.27 feet to the point of beginning, **LESS AND EXCEPT** any right, title, and interest in lands owned by and not under lease from the State of Louisiana, on behalf of the Plaquemines Parish School Board, situated in Section 16, Township 21 South, Range 30 East, Plaquemines Parish, Louisiana, contained within the above described tract, containing approximately **605 acres**, all as more particularly outlined on a plat on file in the Office of Mineral Resources, Department of Natural Resources. All bearings, distances and coordinates are based on Louisiana Coordinate System of 1927, (North or South Zone), where applicable.

NOTE: The above description of the Tract nominated for the purpose of acquiring a mineral lease or a geophysical agreement has been provided and corrected, where required, exclusively by the nominating party. Any mineral lease or geophysical agreement selected from this Tract and awarded by the Louisiana State Mineral and Energy Board shall be without warranty of any kind, either express, implied or statutory including, but not limited to, title or the implied warranties of merchantability and fitness for a particular purpose.

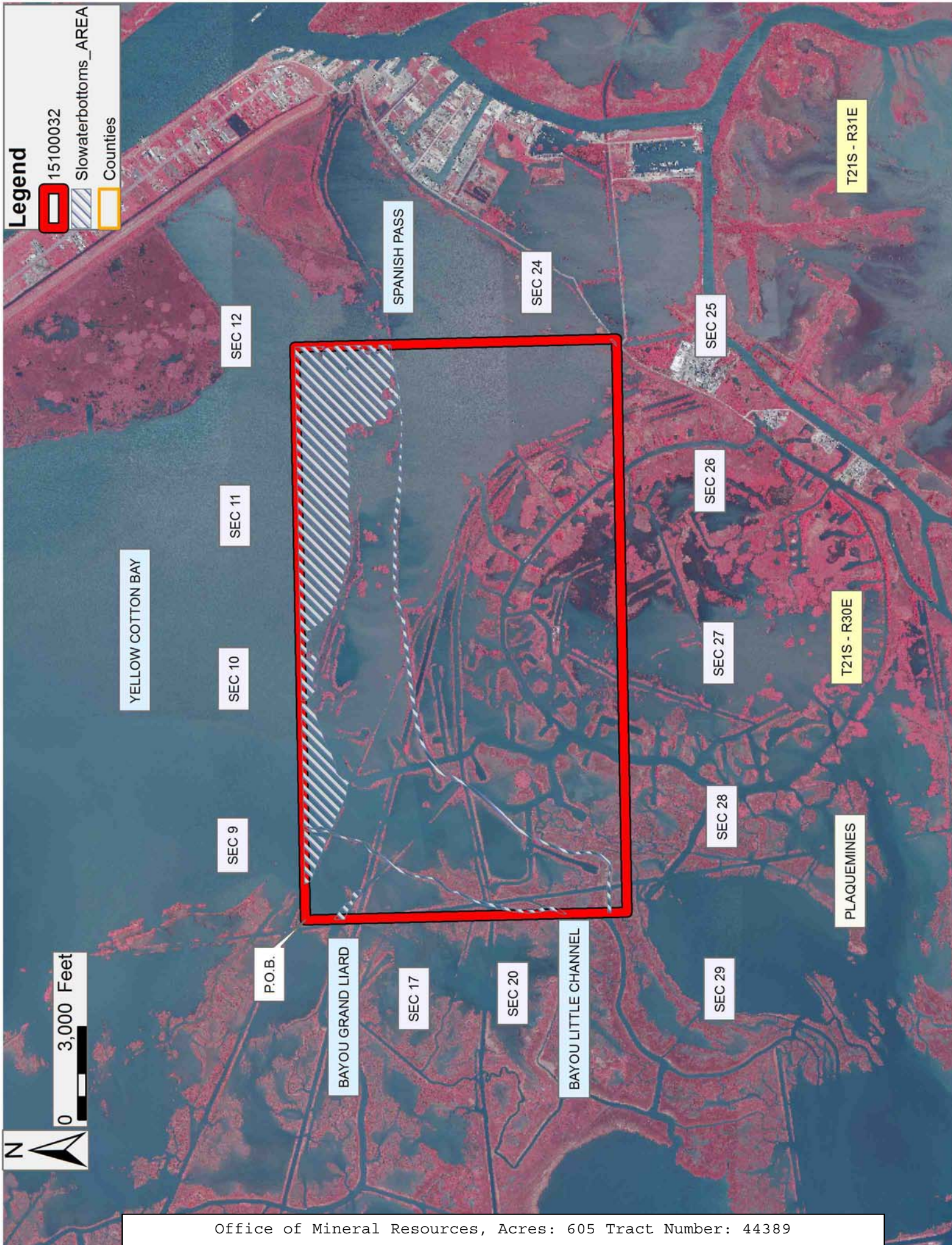
An error or omission in the nominating party's Tract description may require that a State mineral lease or geophysical agreement be modified, canceled or abrogated due to the existence of conflicting leases, operating agreements, private claims or other future obligations or conditions within the Tract described. In such case, however, the Louisiana State Mineral and Energy Board shall not be obligated to refund any consideration paid by the Lessee prior to such modification, cancellation or abrogation including, but not limited to, bonuses, rentals and royalties.

NOTE: The State of Louisiana does hereby reserve, and this lease shall be subject to, the imprescriptible right of surface use in the nature of a servitude in favor of the Department of Natural Resources, including its Offices and Commissions, for the sole purpose of implementing,

constructing, servicing and maintaining approved coastal zone management and/or restoration projects. Utilization of any and all rights derived under this lease by the mineral lessee, its agents, successors or assigns, shall not interfere with nor hinder the reasonable surface use by the Department of Natural Resources, its Offices or Commissions, as herein above reserved.

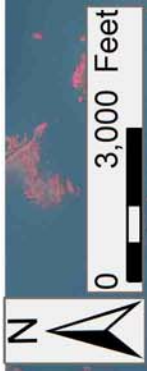
Applicant: DELTA LANDS EXPLORATION, INC.

Bidder	Cash Payment	Price/Acre	Rental	Oil	Gas	Other



Legend

- 15100032
- Slowwaterbottoms_AREA
- Counties



TRACT 44390 - Lafourche Parish, Louisiana

All of the lands now or formerly constituting the beds and bottoms of all water bodies of every nature and description as to which title is vested in the State of Louisiana, together with all islands arising therein and other lands formed by accretion or by reliction, where allowed by law, excepting tax adjudicated lands, and not presently under mineral lease on October 14, 2015, situated in Lafourche Parish, Louisiana, and more particularly described as follows: Beginning at a point having Coordinates of X = 2,350,770.00 and Y = 227,914.00; thence East approximately 1,964 feet to a point on the boundary of the Judgment Area dated June 28, 1955 having a Coordinate of Y = 227,914.00; thence Southeasterly along the boundary of said Judgment Area dated June 28, 1955 to the point of intersection with an East West line having a Coordinate of Y = 225,271.00; thence West approximately 2,688 feet to a point having Coordinates of X = 2,350,770.00 and Y = 225,271.00; thence North 2,643.00 feet to the point of beginning, containing approximately **34 acres**, all as more particularly outlined on a plat on file in the Office of Mineral Resources, Department of Natural Resources. All bearings, distances and coordinates are based on Louisiana Coordinate System of 1927, (North or South Zone), where applicable.

NOTE: The above description of the Tract nominated for the purpose of acquiring a mineral lease or a geophysical agreement has been provided and corrected, where required, exclusively by the nominating party. Any mineral lease or geophysical agreement selected from this Tract and awarded by the Louisiana State Mineral and Energy Board shall be without warranty of any kind, either express, implied or statutory including, but not limited to, title or the implied warranties of merchantability and fitness for a particular purpose.

An error or omission in the nominating party's Tract description may require that a State mineral lease or geophysical agreement be modified, canceled or abrogated due to the existence of conflicting leases, operating agreements, private claims or other future obligations or conditions within the Tract described. In such case, however, the Louisiana State Mineral and Energy Board shall not be obligated to refund any consideration paid by the Lessee prior to such modification, cancellation or abrogation including, but not limited to, bonuses, rentals and royalties.

NOTE: The State of Louisiana does hereby reserve, and this lease shall be subject to, the imprescriptible right of surface use in the nature of a servitude in favor of the Department of Natural Resources, including its Offices and Commissions, for the sole purpose of implementing, constructing, servicing and maintaining approved coastal zone management and/or restoration projects. Utilization of any and all rights derived under this lease by the mineral lessee, its agents, successors or assigns, shall not interfere with nor hinder the reasonable surface use by the

Department of Natural Resources, its Offices or Commissions, as herein above reserved.

Applicant: SOUTH LOUISIANA MINERALS, INC.

Bidder	Cash Payment	Price/Acre	Rental	Oil	Gas	Other

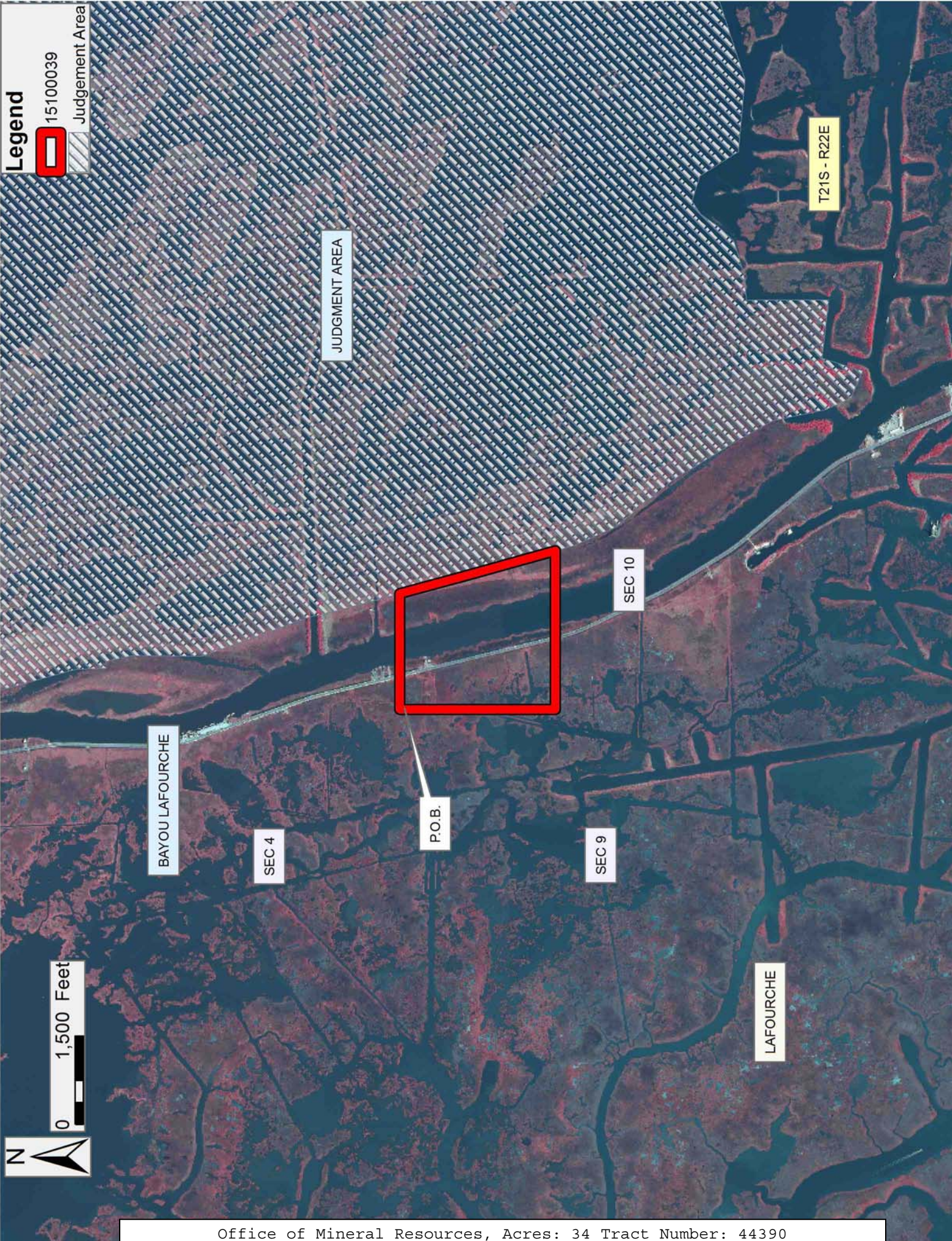
Legend

15100039

Judgement Area

0 1,500 Feet

N



TRACT 44391 - Lafourche Parish, Louisiana

All of the lands now or formerly constituting the beds and bottoms of all water bodies of every nature and description as to which title is vested in the State of Louisiana, together with all islands arising therein and other lands formed by accretion or by reliction, where allowed by law, excepting tax adjudicated lands, and not presently under mineral lease on October 14, 2015, situated in Lafourche Parish, Louisiana, and more particularly described as follows: Beginning at a point having Coordinates of X = 2,303,305.48 and Y = 226,666.25; thence East 14,296.71 feet to a point having Coordinates of X = 2,317,602.19 and Y = 226,666.25; thence South 2,105.23 feet to a point on the Northern boundary of State Lease No. 1451, also being the Northeast corner of State Lease No. 4534 having Coordinates of X = 2,317,602.19 and Y = 224,561.03; thence South 89 degrees 30 minutes 18 seconds West 321.32 feet along the boundary of said State Lease No. 4534 to a point on the Eastern boundary of Operating Agreement AO 0280, having Coordinates of X = 2,317,280.88 and Y = 224,558.25; thence along the boundary of said Operating Agreement AO 0280 the following courses and distances: North 01 degrees 22 minutes 55 seconds West 27.78 feet; North 01 degrees 22 minutes 55 seconds West 106.26 feet; North 11 degrees 39 minutes 21 seconds West 147.23 feet; North 23 degrees 32 minutes 00 seconds West 137.82 feet; North 37 degrees 07 minutes 51 seconds West 137.98 feet; North 48 degrees 49 minutes 39 seconds West 173.88 feet; North 60 degrees 54 minutes 26 seconds West 165.10 feet; North 72 degrees 03 minutes 57 seconds West 164.14 feet; North 76 degrees 03 minutes 03 seconds West 223.00 feet; North 82 degrees 03 minutes 03 seconds West 204.24 feet; North 86 degrees 29 minutes 53 seconds West 219.04 feet; South 87 degrees 43 minutes 01 seconds West 252.34 feet; South 86 degrees 38 minutes 12 seconds West 286.07 feet; South 83 degrees 22 minutes 58 seconds West 167.70 feet; South 81 degrees 15 minutes 28 seconds West 215.18 feet; South 77 degrees 59 minutes 40 seconds West 214.40 feet; South 75 degrees 25 minutes 57 seconds West 307.34 feet; South 70 degrees 14 minutes 54 seconds West 234.59 feet; South 62 degrees 58 minutes 33 seconds West 323.90 feet; South 59 degrees 25 minutes 37 seconds West 249.20 feet; South 51 degrees 54 minutes 43 seconds West 245.17 feet; South 48 degrees 53 minutes 55 seconds West 241.36 feet; South 44 degrees 04 minutes 14 seconds West 181.86 feet; South 37 degrees 44 minutes 57 seconds West 129.15 feet; South 32 degrees 07 minutes 34 seconds West 145.97 feet; South 30 degrees 01 minutes 52 seconds West 78.33 feet; South 24 degrees 30 minutes 10 seconds West 102.66 feet; South 17 degrees 57 minutes 30 seconds West 97.56 feet; South 06 degrees 39 minutes 49 seconds West 122.05 feet; South 02 degrees 50 minutes 20 seconds East 119.78 feet; South 10 degrees 28 minutes 49 seconds East 86.78 feet; South 15 degrees 09 minutes 14 seconds East 128.70 feet; South 22 degrees 07 minutes 48 seconds East 110.91 feet, and South 32 degrees 30 minutes 19 seconds East approximately 129 feet to a point on the boundary of State Lease No. 4534, as amended; thence along the boundary of said State Lease No. 4534 the following three courses: thence along a curve to the left having a chord bearing and distance of South 54 Degrees 32 Minutes 38 Seconds West 1,792.86 feet with a radius of

6,100.00 feet and an arc length of 1,799.38 feet; thence along curve to the left having a chord bearing and distance of South 18 Degrees 53 Minutes 10 Seconds West 2,008.11 feet with a radius of 2,220.00 feet and an arc length of 2,083.77 feet to the Southernmost point of said State Lease No. 4534, also being a point on the boundary of State Lease No. 1450, as amended having Coordinates of X = 2,308,068.28 and Y = 219,978.48; thence along the boundary of said State Lease No. 1450, as amended, on a curve to the left having a radius of 3,475.00 feet to a point having Coordinates of X = 2,308,135.62 and Y = 219,059.07; thence South 89 degrees 59 minutes 14 seconds West 4,830.14 feet to a point having Coordinates of X = 2,303,305.48 and Y = 219,058.00; thence North 7,608.25 feet to the point of beginning, containing approximately **1,128 acres**, all as more particularly outlined on a plat on file in the Office of Mineral Resources, Department of Natural Resources. All bearings, distances and coordinates are based on Louisiana Coordinate System of 1927, (North or South Zone), where applicable.

NOTE: The above description of the Tract nominated for the purpose of acquiring a mineral lease or a geophysical agreement has been provided and corrected, where required, exclusively by the nominating party. Any mineral lease or geophysical agreement selected from this Tract and awarded by the Louisiana State Mineral and Energy Board shall be without warranty of any kind, either express, implied or statutory including, but not limited to, title or the implied warranties of merchantability and fitness for a particular purpose.

An error or omission in the nominating party's Tract description may require that a State mineral lease or geophysical agreement be modified, canceled or abrogated due to the existence of conflicting leases, operating agreements, private claims or other future obligations or conditions within the Tract described. In such case, however, the Louisiana State Mineral and Energy Board shall not be obligated to refund any consideration paid by the Lessee prior to such modification, cancellation or abrogation including, but not limited to, bonuses, rentals and royalties.

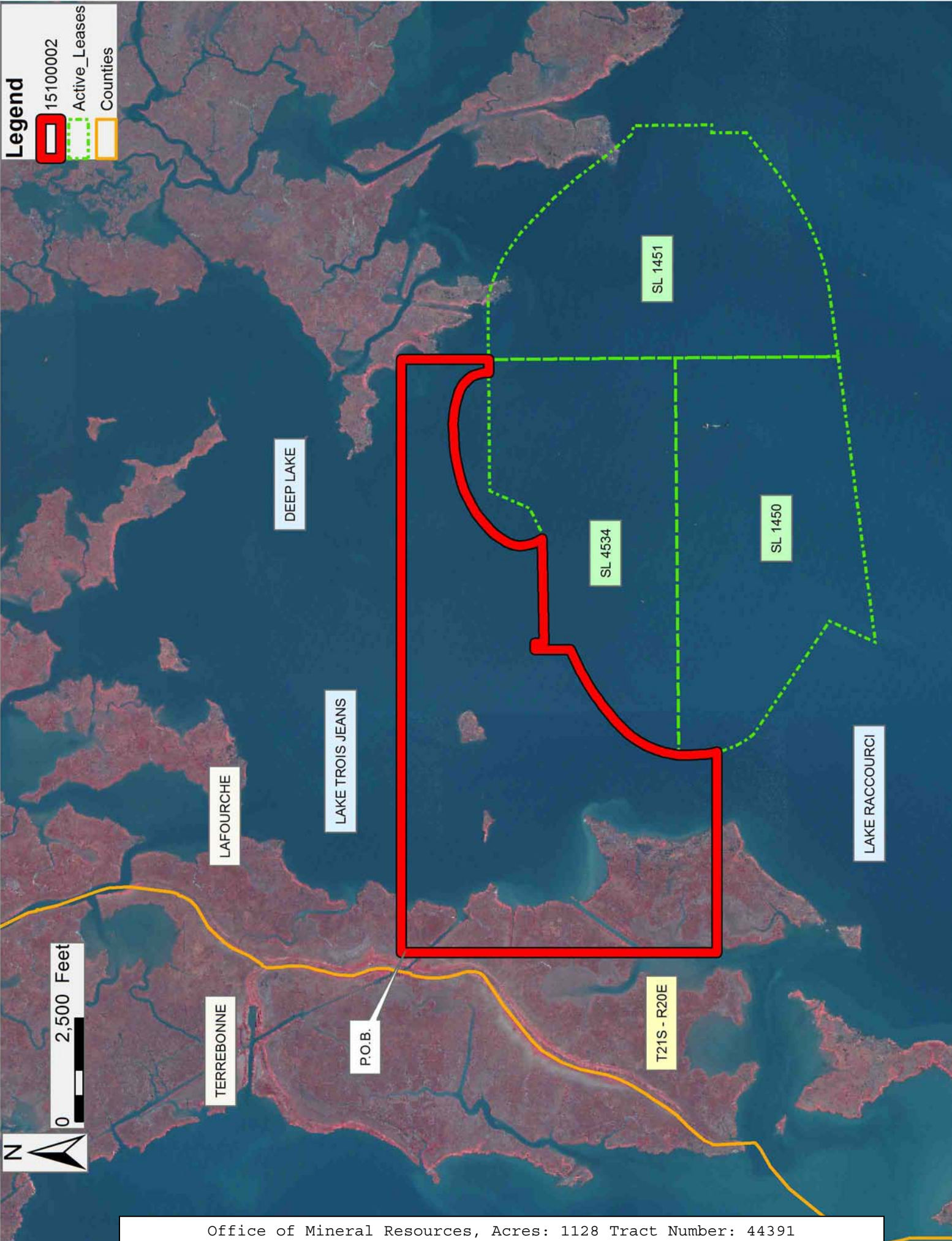
NOTE: The State of Louisiana does hereby reserve, and this lease shall be subject to, the imprescriptible right of surface use in the nature of a servitude in favor of the Department of Natural Resources, including its Offices and Commissions, for the sole purpose of implementing, constructing, servicing and maintaining approved coastal zone management and/or restoration projects. Utilization of any and all rights derived under this lease by the mineral lessee, its agents, successors or assigns, shall not interfere with nor hinder the reasonable surface use by the Department of Natural Resources, its Offices or Commissions, as herein above reserved.

Applicant: THEOPHILUS OIL, GAS & LAND SERVICES, LLC

Bidder	Cash Payment	Price/Acre	Rental	Oil	Gas	Other

Legend

- 15100002
- Active_Leases
- Counties



TRACT 44392 - Lafourche Parish, Louisiana

All of the lands now or formerly constituting the beds and bottoms of all water bodies of every nature and description as to which title is vested in the State of Louisiana, together with all islands arising therein and other lands formed by accretion or by reliction, where allowed by law, excepting tax adjudicated lands, and not presently under mineral lease on October 14, 2015, situated in Lafourche Parish, Louisiana, and more particularly described as follows: Beginning at a point having Coordinates of X = 2,317,602.19 and Y = 226,666.25; thence East 9,393.76 feet to a point having Coordinates of X = 2,326,995.95 and Y = 226,666.25; thence South 9,148.27 feet to a point having Coordinates of X = 2,326,995.95 and Y = 217,517.98; thence North 89 degrees 09 minutes 45 seconds West 4,926.48 feet to a point on the Eastern boundary of State Lease No. 1451, as amended, having Coordinates of X = 2,322,070.00 and Y = 217,590.00; thence along the boundary of said State Lease No. 1451 the following courses and distances: North 52 degrees 45 minutes 55 seconds East 1,261.40 feet to a point having Coordinates of X = 2,323,074.28 and Y = 218,353.25, North 00 degrees 29 minutes 42 seconds West 829.86 feet to a point having Coordinates of X = 2,323,067.11 and Y = 219,183.08, North 89 degrees 30 minutes 20 seconds East 190.00 feet to a point having Coordinates of X = 2,323,257.10 and Y = 219,184.72, North 00 degrees 29 minutes 42 seconds West 1,875.00 feet to a point having Coordinates of X = 2,323,240.90 and Y = 221,059.65, North 74 degrees 43 minutes 11 seconds West 229.00 feet to a point having Coordinates of X = 2,323,020.00 and Y = 221,120.00, North 39 degrees 48 minutes 20 seconds West 702.92 feet to a point having Coordinates of X = 2,322,570.00 and Y = 221,660.00, North 37 degrees 24 minutes 19 seconds West 1,070.05 feet to a point having Coordinates of X = 2,321,920.00 and Y = 222,510.00, North 41 degrees 55 minutes 21 seconds West 658.56 feet to a point having Coordinates of X = 2,321,428.00 and Y = 223,000.00, North 45 degrees 36 minutes 11 seconds West 671.79 feet to a point having Coordinates of X = 2,321,000.00 and Y = 223,470.00, North 47 degrees 38 minutes 33 seconds West 460.11 feet to a point having Coordinates of X = 2,320,660.00 and Y = 223,780.00, North 53 degrees 44 minutes 46 seconds West 372.02 feet to a point having Coordinates of X = 2,320,360.00 and Y = 224,000.00, North 56 degrees 18 minutes 36 seconds West 432.67 feet to a point having Coordinates of X = 2,320,000.00 and Y = 224,240.00, North 65 degrees 33 minutes 22 seconds West 483.32 feet to a point having Coordinates of X = 2,319,560.00 and Y = 224,440.00, North 73 degrees 18 minutes 02 seconds West 466.61 feet to a point having Coordinates of X = 2,319,113.07 and Y = 224,574.08, and South 89 degrees 30 minutes 17 seconds West 1,510.94 feet to its Northwest corner, also being the Northeast corner of State Lease No. 4534, as amended, having Coordinates of X = 2,317,602.19 and Y = 224,651.02; thence North 2,105.23 feet to the point of beginning, containing approximately **789 acres**, all as more particularly outlined on a plat on file in the Office of Mineral Resources, Department of Natural Resources. All bearings, distances and coordinates are based on Louisiana Coordinate System of 1927, (North or South Zone), where applicable.

NOTE: The above description of the Tract nominated for the purpose of acquiring a mineral lease or a geophysical agreement has been provided and corrected, where required, exclusively by the nominating party. Any mineral lease or geophysical agreement selected from this Tract and awarded by the Louisiana State Mineral and Energy Board shall be without warranty of any kind, either express, implied or statutory including, but not limited to, title or the implied warranties of merchantability and fitness for a particular purpose.

An error or omission in the nominating party's Tract description may require that a State mineral lease or geophysical agreement be modified, canceled or abrogated due to the existence of conflicting leases, operating agreements, private claims or other future obligations or conditions within the Tract described. In such case, however, the Louisiana State Mineral and Energy Board shall not be obligated to refund any consideration paid by the Lessee prior to such modification, cancellation or abrogation including, but not limited to, bonuses, rentals and royalties.

NOTE: The State of Louisiana does hereby reserve, and this lease shall be subject to, the imprescriptible right of surface use in the nature of a servitude in favor of the Department of Natural Resources, including its Offices and Commissions, for the sole purpose of implementing, constructing, servicing and maintaining approved coastal zone management and/or restoration projects. Utilization of any and all rights derived under this lease by the mineral lessee, its agents, successors or assigns, shall not interfere with nor hinder the reasonable surface use by the Department of Natural Resources, its Offices or Commissions, as herein above reserved.

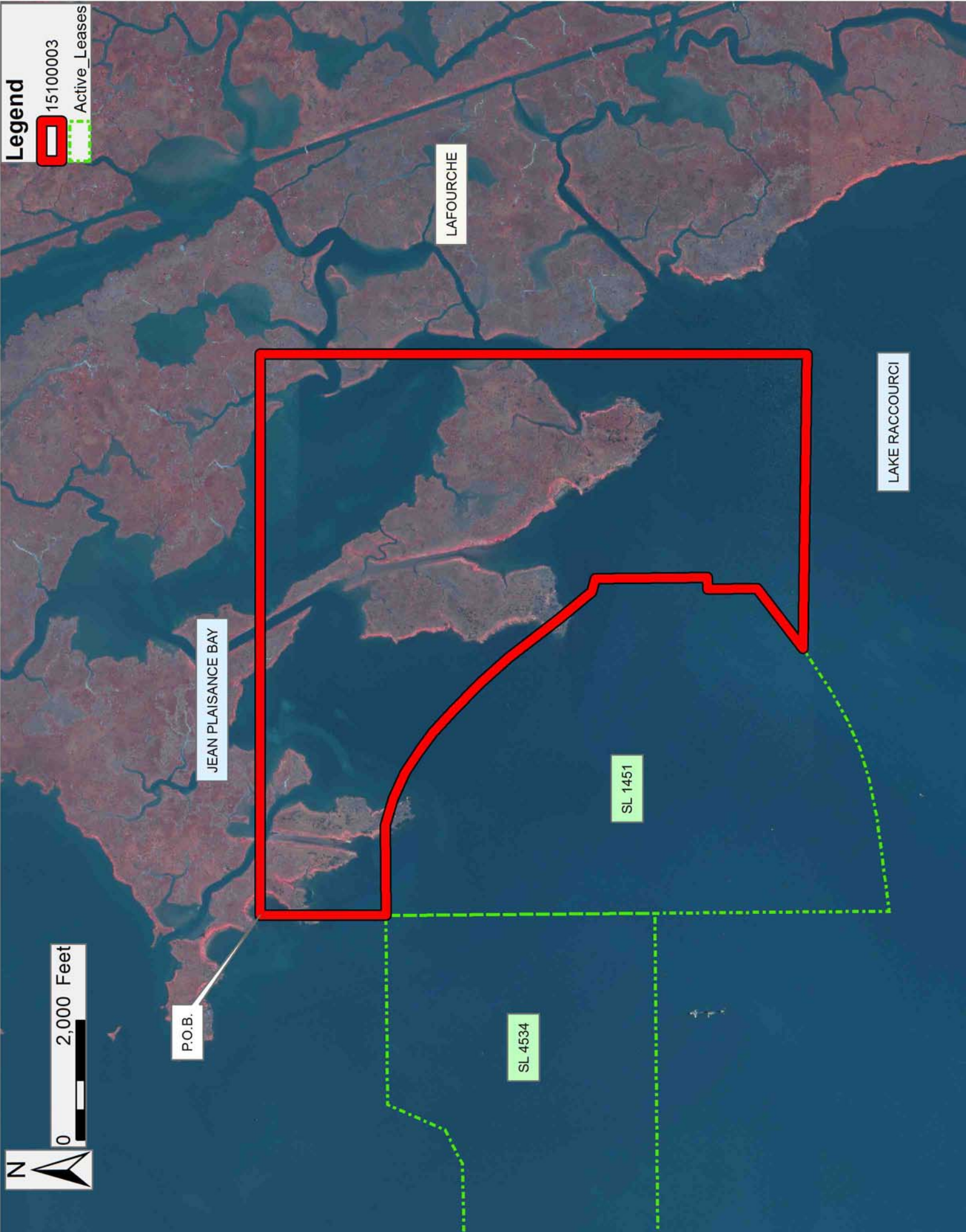
Applicant: THEOPHILUS OIL, GAS & LAND SERVICES, LLC

Bidder	Cash Payment	Price/Acre	Rental	Oil	Gas	Other

Legend

15100003

Active_Leases



TRACT 44393 - Lafourche Parish, Louisiana

All of the lands now or formerly constituting the beds and bottoms of all water bodies of every nature and description as to which title is vested in the State of Louisiana, together with all islands arising therein and other lands formed by accretion or by reliction, where allowed by law, excepting tax adjudicated lands, and not presently under mineral lease on October 14, 2015, situated in Lafourche Parish, Louisiana, and more particularly described as follows: Beginning at a point having Coordinates of X = 2,326,995.95 and Y = 226,666.25; thence East 9,500.00 feet to a point having Coordinates of X = 2,336,495.95 and Y = 226,666.25; thence South 9,148.27 feet to a point having Coordinates of X = 2,336,495.95 and Y = 217,517.98; thence West 9,500.00 feet to a point having Coordinates of X = 2,326,995.95 and Y = 217,517.98; thence North 9,148.27 feet to the point of beginning, containing approximately **420 acres**, all as more particularly outlined on a plat on file in the Office of Mineral Resources, Department of Natural Resources. All bearings, distances and coordinates are based on Louisiana Coordinate System of 1927, (North or South Zone), where applicable.

NOTE: The above description of the Tract nominated for the purpose of acquiring a mineral lease or a geophysical agreement has been provided and corrected, where required, exclusively by the nominating party. Any mineral lease or geophysical agreement selected from this Tract and awarded by the Louisiana State Mineral and Energy Board shall be without warranty of any kind, either express, implied or statutory including, but not limited to, title or the implied warranties of merchantability and fitness for a particular purpose.

An error or omission in the nominating party's Tract description may require that a State mineral lease or geophysical agreement be modified, canceled or abrogated due to the existence of conflicting leases, operating agreements, private claims or other future obligations or conditions within the Tract described. In such case, however, the Louisiana State Mineral and Energy Board shall not be obligated to refund any consideration paid by the Lessee prior to such modification, cancellation or abrogation including, but not limited to, bonuses, rentals and royalties.

NOTE: The State of Louisiana does hereby reserve, and this lease shall be subject to, the imprescriptible right of surface use in the nature of a servitude in favor of the Department of Natural Resources, including its Offices and Commissions, for the sole purpose of implementing, constructing, servicing and maintaining approved coastal zone management and/or restoration projects. Utilization of any and all rights derived under this lease by the mineral lessee, its agents, successors or assigns, shall not interfere with nor hinder the reasonable surface use by the Department of Natural Resources, its Offices or Commissions, as herein above reserved.

Applicant: THEOPHILUS OIL, GAS & LAND SERVICES, LLC

Bidder	Cash Payment	Price/Acre	Rental	Oil	Gas	Other

Legend

15100004



TRACT 44394 - Lafourche Parish, Louisiana

All of the lands now or formerly constituting the beds and bottoms of all water bodies of every nature and description as to which title is vested in the State of Louisiana, together with all islands arising therein and other lands formed by accretion or by reliction, where allowed by law, excepting tax adjudicated lands, and not presently under mineral lease on October 14, 2015, situated in Lafourche Parish, Louisiana, and more particularly described as follows: Beginning at a point having Coordinates of X = 2,350,770.00 and Y = 225,271.00; thence East approximately 2,688 feet to a point on the boundary of the Judgment Area dated June 28, 1955 having a Coordinate of Y = 225,271.00; thence Southeasterly along the boundary of said Judgment Area dated June 28, 1955 to the point of intersection with an East West line having a Coordinate of Y = 222,648.00; thence West approximately 3,085 feet to a point having Coordinates of X = 2,351,963.00 and Y = 222,648.00; thence North 24 degrees 27 minutes 26 seconds West 2,881.56 feet to the point of beginning, containing approximately **33 acres**, all as more particularly outlined on a plat on file in the Office of Mineral Resources, Department of Natural Resources. All bearings, distances and coordinates are based on Louisiana Coordinate System of 1927, (North or South Zone), where applicable.

NOTE: The above description of the Tract nominated for the purpose of acquiring a mineral lease or a geophysical agreement has been provided and corrected, where required, exclusively by the nominating party. Any mineral lease or geophysical agreement selected from this Tract and awarded by the Louisiana State Mineral and Energy Board shall be without warranty of any kind, either express, implied or statutory including, but not limited to, title or the implied warranties of merchantability and fitness for a particular purpose.

An error or omission in the nominating party's Tract description may require that a State mineral lease or geophysical agreement be modified, canceled or abrogated due to the existence of conflicting leases, operating agreements, private claims or other future obligations or conditions within the Tract described. In such case, however, the Louisiana State Mineral and Energy Board shall not be obligated to refund any consideration paid by the Lessee prior to such modification, cancellation or abrogation including, but not limited to, bonuses, rentals and royalties.

NOTE: The State of Louisiana does hereby reserve, and this lease shall be subject to, the imprescriptible right of surface use in the nature of a servitude in favor of the Department of Natural Resources, including its Offices and Commissions, for the sole purpose of implementing, constructing, servicing and maintaining approved coastal zone management and/or restoration projects. Utilization of any and all rights derived under this lease by the mineral lessee, its agents, successors or assigns, shall not interfere with nor hinder the reasonable surface use by the

Department of Natural Resources, its Offices or Commissions, as herein above reserved.

Applicant: SOUTH LOUISIANA MINERALS, INC.

Bidder	Cash Payment	Price/Acre	Rental	Oil	Gas	Other

Legend

15100038

Judgement Area

0 1,500 Feet

