

TRACT 41162 - St. Helena Parish, Louisiana

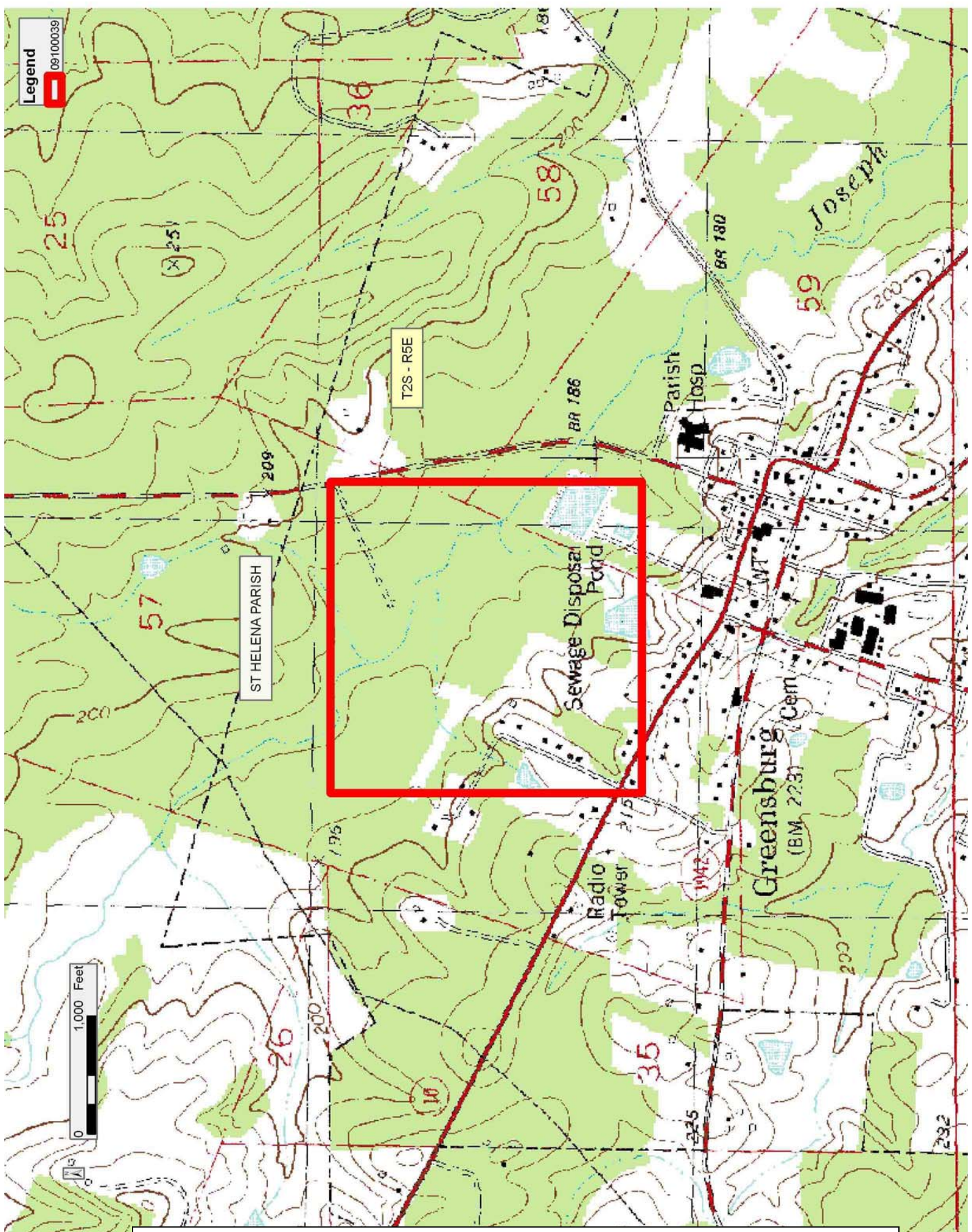
A certain Tract of land, excluding the beds and bottoms of all navigable waters, belonging to and not presently under mineral lease from Louisiana Department of Transportation and Development on October 14, 2009, being more fully described as follows: Beginning at the Northwest corner of the production unit identified as the TUSC RA SU L created by the Louisiana Office of Conservation Order No. 1183 for Greensburg Field, having Coordinates of X = 2,206,424.20 and Y = 790,778.03; thence East 2,640.00 feet along the North line of said TUSC RA SU L to its Northeast corner having Coordinates of X = 2,209,064.20 and Y = 790,778.03; thence South 2,640.00 feet along the East line of said TUSC RA SU L to its Southeast corner having Coordinates of X = 2,209,064.20 and Y = 788,138.03; thence West 2,640.00 feet along the South line of said TUSC RA SU L to its Southwest corner having Coordinates of X = 2,206,424.20 and Y = 788,138.03; thence North 2,640.00 feet along the West line of said TUSC RA SU L to the point of beginning, acreage being Tract 37 of said TUSC RA SU L containing **0.579 acres**, all as more particularly outlined on a plat on file in the Office of Mineral Resources, Department of Natural Resources. The description is based on information provided by the State Agency regarding location and ownership of surface and mineral rights. All bearings, distances and coordinates, if applicable, are based on Louisiana Coordinate System of 1927, (North or South Zone).

NOTE: The above description of the Tract nominated for lease has been provided and corrected, where required, exclusively by the nomination party. Any mineral lease selected from this Tract and awarded by the Louisiana State Mineral Board shall be without warranty of any kind, either express, implied, or statutory, including, but not limited to, the implied warranties of merchantability and fitness for a particular purpose. Should the mineral lease awarded by the Louisiana State Mineral Board be subsequently modified, cancelled or abrogated due to the existence of conflicting leases, operating agreements, private claims or other future obligations or conditions which may affect all or any portion of the leased Tract, it shall not relieve the Lessee of the obligation to pay any bonus due thereon to the Louisiana State Mineral Board, nor shall the Louisiana State Mineral Board be obligated to refund any consideration paid by the Lessor prior to such modification, cancellation, or abrogation, including, but not limited to, bonuses, rentals and royalties.

NOTE: There shall be no surface operations conducted on this tract.

Applicant: TEXAS PETROLEUM INVESTMENT COMPANY to Agency and by Resolution from the Louisiana Department Of Transportation And Development authorizing the Mineral Board to act in its behalf

Bidder	Cash Payment	Price/Acre	Rental	Oil	Gas	Other



TRACT 41163 - St. Helena Parish, Louisiana

A certain Tract of land, excluding the beds and bottoms of all navigable waters, belonging to and not presently under mineral lease from St. Helena Parish Police Jury on October 14, 2009, being more fully described as follows: Beginning at the Northwest corner of the production unit identified as the TUSC RA SU L created by the Louisiana Office of Conservation Order No. 1183 for Greensburg Field, having Coordinates of X = 2,206,424.20 and Y = 790,778.03; thence East 2,640.00 feet along the North line of said TUSC RA SU L to its Northeast corner having Coordinates of X = 2,209,064.20 and Y = 790,778.03; thence South 2,640.00 feet along the East line of said TUSC RA SU L to its Southeast corner having Coordinates of X = 2,209,064.20 and Y = 788,138.03; thence West 2,640.00 feet along the South line of said TUSC RA SU L to its Southwest corner having Coordinates of X = 2,206,424.20 and Y = 788,138.03; thence North 2,640.00 feet along the West line of said TUSC RA SU L to the point of beginning, acreage being Tract 2 of said TUSC RA SU L containing **13.983 acres**, all as more particularly outlined on a plat on file in the Office of Mineral Resources, Department of Natural Resources. The description is based on information provided by the State Agency regarding location and ownership of surface and mineral rights. All bearings, distances and coordinates, if applicable, are based on Louisiana Coordinate System of 1927, (North or South Zone).

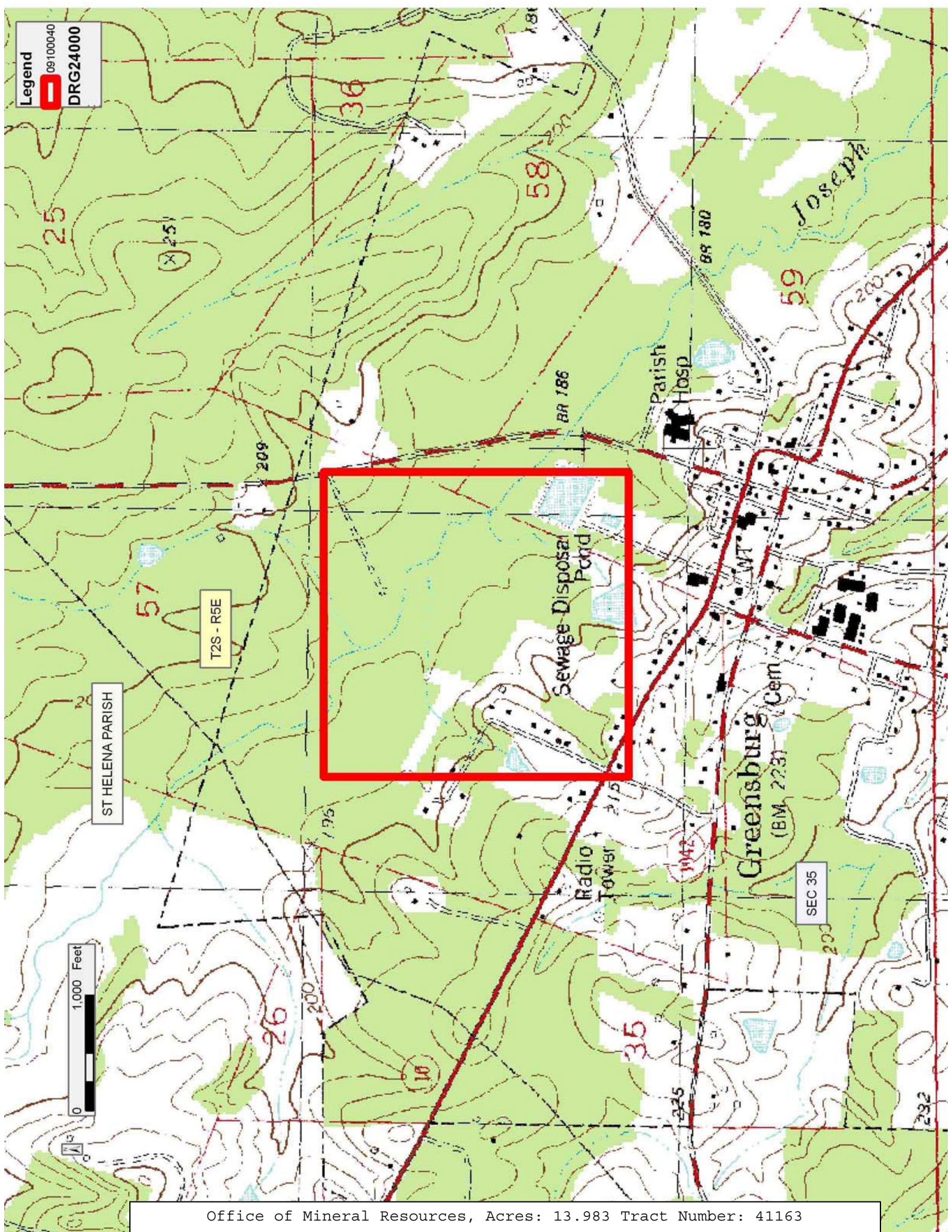
NOTE: The above description of the Tract nominated for lease has been provided and corrected, where required, exclusively by the nomination party. Any mineral lease selected from this Tract and awarded by the Louisiana State Mineral Board shall be without warranty of any kind, either express, implied, or statutory, including, but not limited to, the implied warranties of merchantability and fitness for a particular purpose. Should the mineral lease awarded by the Louisiana State Mineral Board be subsequently modified, cancelled or abrogated due to the existence of conflicting leases, operating agreements, private claims or other future obligations or conditions which may affect all or any portion of the leased Tract, it shall not relieve the Lessee of the obligation to pay any bonus due thereon to the Louisiana State Mineral Board, nor shall the Louisiana State Mineral Board be obligated to refund any consideration paid by the Lessor prior to such modification, cancellation, or abrogation, including, but not limited to, bonuses, rentals and royalties.

NOTE: There shall be no grant of surface rights in and to the property. All surface rights shall be reserved to the St. Helena Parish Police Jury.

Applicant: TEXAS PETROLEUM INVESTMENT COMPANY to Agency and by Resolution from the St. Helena Parish Police Jury authorizing the Mineral Board to act in its behalf

Bidder	Cash Payment	Price/Acre	Rental	Oil	Gas	Other

Legend
09100040
DRG24000



TRACT 41164 - St. Helena Parish, Louisiana

A certain Tract of land, excluding the beds and bottoms of all navigable waters, belonging to and not presently under mineral lease from Town Of Greensburg on October 14, 2009, being more fully described as follows: Beginning at the Northwest corner of the production unit identified as the TUSC RA SU L created by the Louisiana Office of Conservation Order No. 1183 for Greensburg Field, having Coordinates of X = 2,206,424.20 and Y = 790,778.03; thence East 2,640.00 feet along the North line of said TUSC RA SU L to its Northeast corner having Coordinates of X = 2,209,064.20 and Y = 790,778.03; thence South 2,640.00 feet along the East line of said TUSC RA SU L to its Southeast corner having Coordinates of X = 2,209,064.20 and Y = 788,138.03; thence West 2,640.00 feet along the South line of said TUSC RA SU L to its Southwest corner having Coordinates of X = 2,206,424.20 and Y = 788,138.03; thence North 2,640.00 feet along the West line of said TUSC RA SU L to the point of beginning, acreage being Tracts 12, 31, 34, and 39 of said TUSC RA SU L containing **10.596 acres**, all as more particularly outlined on a plat on file in the Office of Mineral Resources, Department of Natural Resources. The description is based on information provided by the State Agency regarding location and ownership of surface and mineral rights. All bearings, distances and coordinates, if applicable, are based on Louisiana Coordinate System of 1927, (North or South Zone).

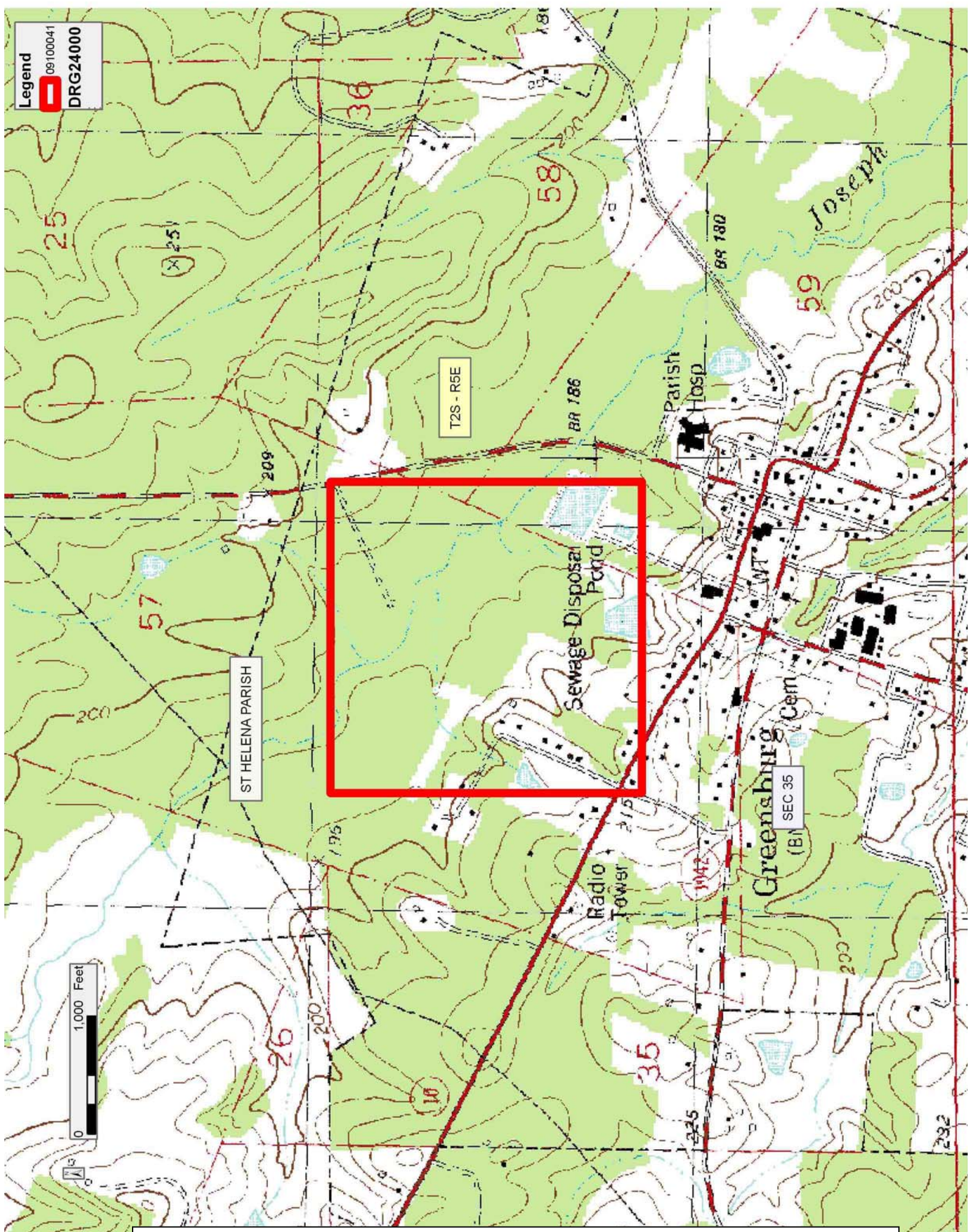
NOTE: The above description of the Tract nominated for lease has been provided and corrected, where required, exclusively by the nomination party. Any mineral lease selected from this Tract and awarded by the Louisiana State Mineral Board shall be without warranty of any kind, either express, implied, or statutory, including, but not limited to, the implied warranties of merchantability and fitness for a particular purpose. Should the mineral lease awarded by the Louisiana State Mineral Board be subsequently modified, cancelled or abrogated due to the existence of conflicting leases, operating agreements, private claims or other future obligations or conditions which may affect all or any portion of the leased Tract, it shall not relieve the Lessee of the obligation to pay any bonus due thereon to the Louisiana State Mineral Board, nor shall the Louisiana State Mineral Board be obligated to refund any consideration paid by the Lessor prior to such modification, cancellation, or abrogation, including, but not limited to, bonuses, rentals and royalties.

NOTE: There shall be no grant of surface rights in and to the property. All surface rights shall be reserved to The Town of Greensburg.

Applicant: TEXAS PETROLEUM INVESTMENT COMPANY to Agency and by Resolution from the Town Of Greensburg authorizing the Mineral Board to act in its behalf

Bidder	Cash Payment	Price/Acre	Rental	Oil	Gas	Other

Legend
09100041
DRG24000



Office of Mineral Resources, Acres: 10.596 Tract Number: 41164