

TRACT 41130 - De Soto and Red River Parishes, Louisiana

All of the lands now or formerly constituting the beds and bottoms of all water bodies of every nature and description as to which title is vested in the State of Louisiana, together with all islands arising therein and other lands formed by accretion or by reliction, where allowed by law, excepting tax adjudicated lands, and not presently under mineral lease on October 14, 2009, situated in De Soto and Red River Parishes, Louisiana, and more particularly described as follows: Beginning at a point on the South boundary of State Lease No. 18372, as amended, having Coordinates of X = 1,687,573.00 and Y = 509,400.00; thence East 2,640.00 feet along the South boundary of said State Lease No. 18372 to the Northwest corner of State Lease No. 17128, as amended, having Coordinates of X = 1,690,213.00 and Y = 509,400.00; thence South 2,640.00 feet along the West boundary of said State Lease No. 17128 to a point having Coordinates of X = 1,690,213.00 and Y = 506,760.00; thence West 2,640.00 feet to a point having Coordinates of X = 1,687,573.00 and Y = 506,760.00; thence North 2,640.00 feet to the point of beginning, containing approximately **1 acre**, all as more particularly outlined on a plat on file in the Office of Mineral Resources, Department of Natural Resources. All bearings, distances and coordinates are based on Louisiana Coordinate System of 1927, (North or South Zone), where applicable.

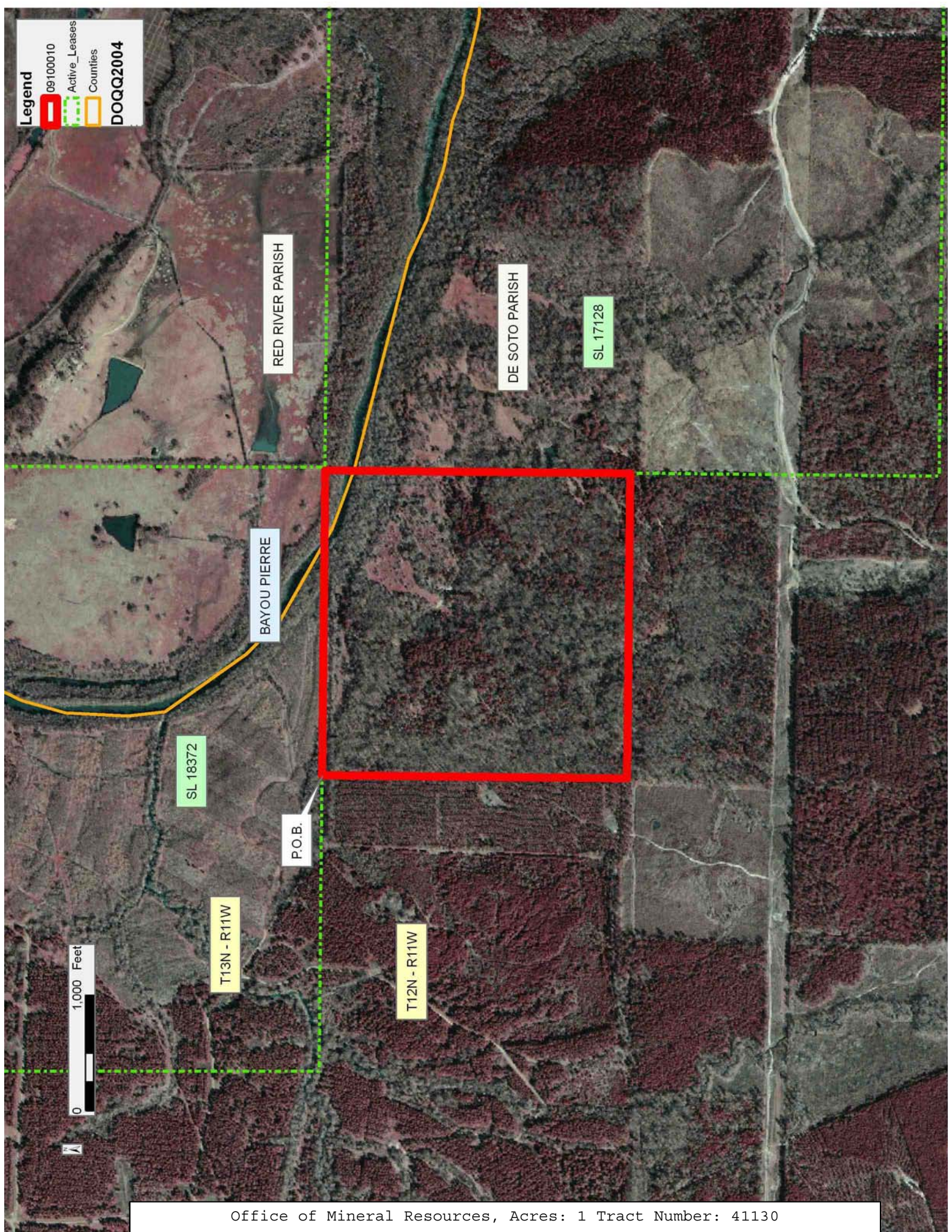
NOTE: The above description of the Tract nominated for lease has been provided and corrected, where required, exclusively by the nomination party. Any mineral lease selected from this Tract and awarded by the Louisiana State Mineral Board shall be without warranty of any kind, either express, implied, or statutory, including, but not limited to, the implied warranties of merchantability and fitness for a particular purpose. Should the mineral lease awarded by the Louisiana State Mineral Board be subsequently modified, cancelled or abrogated due to the existence of conflicting leases, operating agreements, private claims or other future obligations or conditions which may affect all or any portion of the leased Tract, it shall not relieve the Lessee of the obligation to pay any bonus due thereon to the Louisiana State Mineral Board, nor shall the Louisiana State Mineral Board be obligated to refund any consideration paid by the Lessor prior to such modification, cancellation, or abrogation, including, but not limited to, bonuses, rentals and royalties.

Applicant: THEOPHILUS OIL, GAS & LAND SERVICES, LLC

Bidder	Cash Payment	Price/Acre	Rental	Oil	Gas	Other

Legend

- 09100010
- Active_Leases
- Counties
- DOQQ2004



RED RIVER PARISH

DE SOTO PARISH

SL 17128

BAYOU PIERRE

SL 18372

P.O.B.

T13N - R11W

T12N - R11W

0 1,000 Feet



TRACT 41131 - De Soto and Red River Parishes, Louisiana

All of the lands now or formerly constituting the beds and bottoms of all water bodies of every nature and description as to which title is vested in the State of Louisiana, together with all islands arising therein and other lands formed by accretion or by reliction, where allowed by law, excepting tax adjudicated lands, and not presently under mineral lease on October 14, 2009, situated in De Soto and Red River Parishes, Louisiana, and more particularly described as follows: Beginning at the Northeast corner of State Lease No. 19838, also being the Southwest corner of State Lease No. 20040, also being the Southeast corner of State Lease No. 19837, having Coordinates of X = 1,708,190.00 and Y = 493,300.00; thence East 15,875.00 feet along the South boundary of said State Lease No. 20040 to its Southeast corner, also being the Southwest corner of State Lease No. 20075 having Coordinates of X = 1,724,065.00 and Y = 493,300.00; thence South 15,935.00 feet to the Northwest corner of State Lease No. 19839 having Coordinates of X = 1,724,065.00 and Y = 477,365.00; thence West 13,565.00 feet to a point on the East boundary of State Lease No. 15500 having Coordinates of X = 1,710,500.00 and Y = 477,365.00; thence along the East and North boundary of said State Lease No. 15500 the following courses and distances: North 235.00 feet to a corner having Coordinates of X = 1,710,500.00 and Y = 477,600.00 and West 2,310.00 feet to the Southeast corner of said State Lease No. 19838 having Coordinates of X = 1,708,190.00 and Y = 477,600.00; thence North 15,700.00 feet along the East boundary of said State Lease No. 19838 to the point of beginning, containing approximately **86 acres**, all as more particularly outlined on a plat on file in the Office of Mineral Resources, Department of Natural Resources. All bearings, distances and coordinates are based on Louisiana Coordinate System of 1927, (North or South Zone), where applicable.

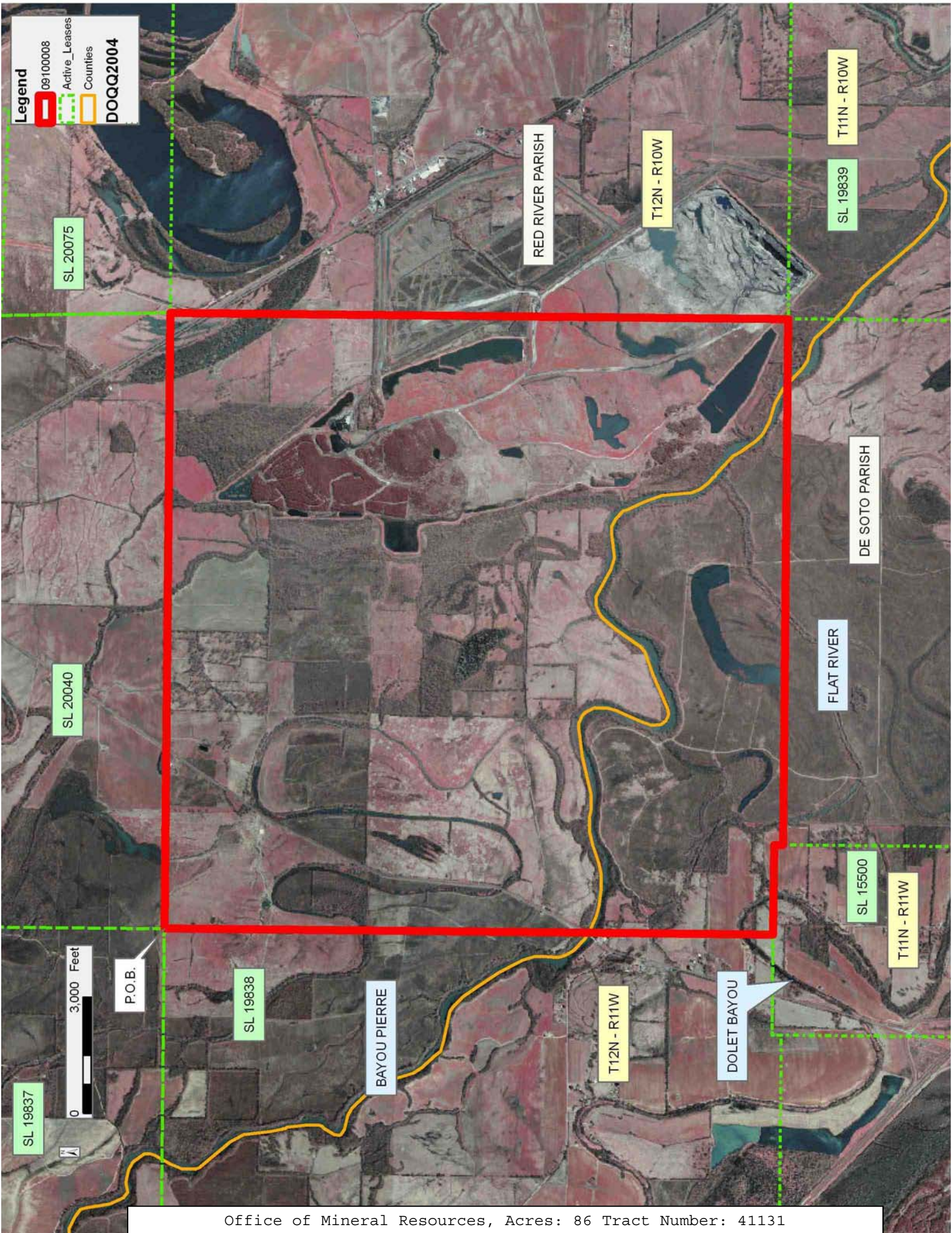
NOTE: The above description of the Tract nominated for lease has been provided and corrected, where required, exclusively by the nomination party. Any mineral lease selected from this Tract and awarded by the Louisiana State Mineral Board shall be without warranty of any kind, either express, implied, or statutory, including, but not limited to, the implied warranties of merchantability and fitness for a particular purpose. Should the mineral lease awarded by the Louisiana State Mineral Board be subsequently modified, cancelled or abrogated due to the existence of conflicting leases, operating agreements, private claims or other future obligations or conditions which may affect all or any portion of the leased Tract, it shall not relieve the Lessee of the obligation to pay any bonus due thereon to the Louisiana State Mineral Board, nor shall the Louisiana State Mineral Board be obligated to refund any consideration paid by the Lessor prior to such modification, cancellation, or abrogation, including, but not limited to, bonuses, rentals and royalties.

Applicant: THEOPHILUS OIL, GAS & LAND SERVICES, LLC

Bidder	Cash Payment	Price/Acre	Rental	Oil	Gas	Other

Legend

- 09100008 Active_Leases
- Counties
- DOQQ2004



TRACT 41132 - Red River Parish, Louisiana

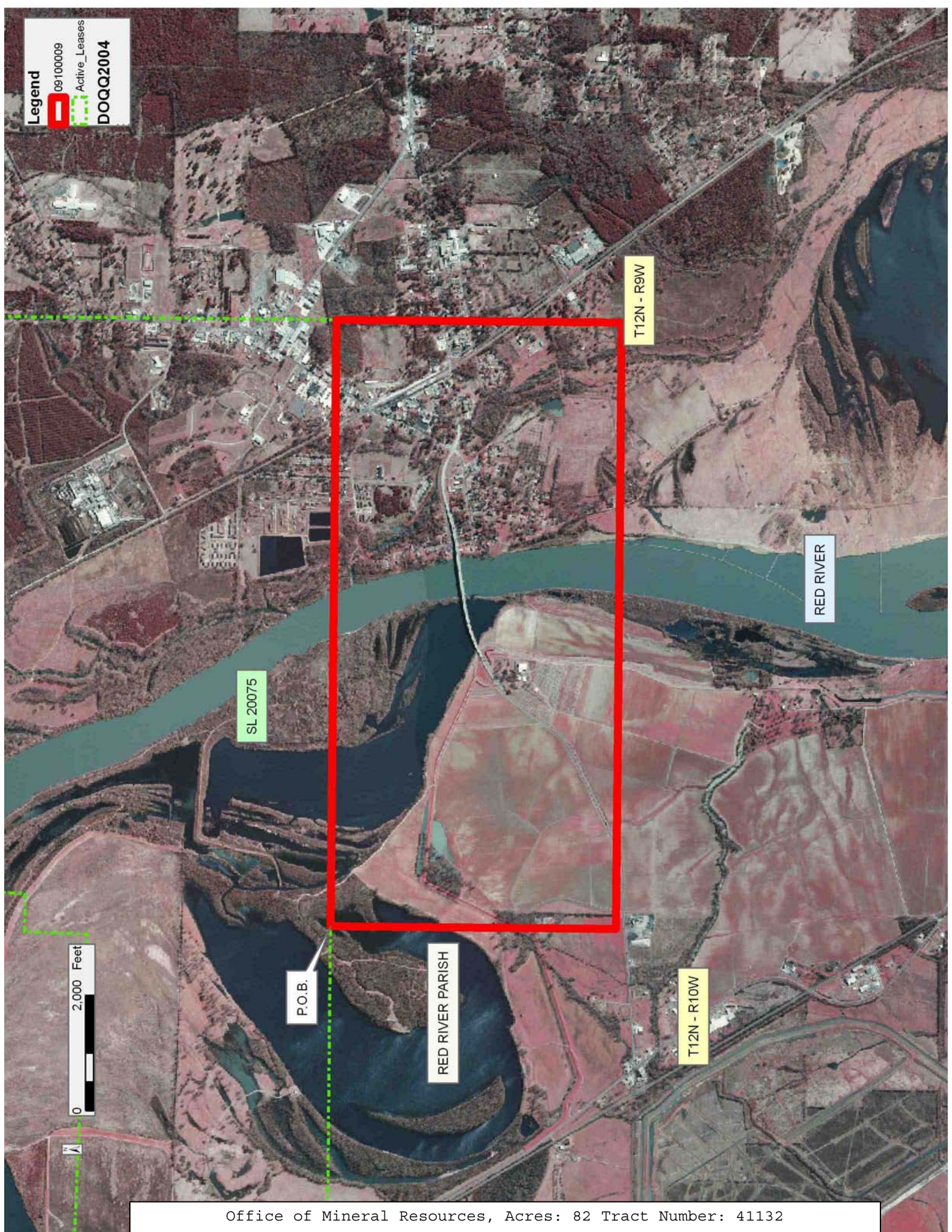
All of the lands now or formerly constituting the beds and bottoms of all water bodies of every nature and description as to which title is vested in the State of Louisiana, together with all islands arising therein and other lands formed by accretion or by reliction, where allowed by law, excepting tax adjudicated lands, and not presently under mineral lease on October 14, 2009, situated in Red River Parish, Louisiana, and more particularly described as follows: Beginning at a point on the South boundary of State Lease No. 20075 having Coordinates of X = 1,729,450.00 and Y = 493,300.00; thence East 10,490.00 feet along the South boundary of said State Lease No. 20075 to its Southeast corner having Coordinates of X = 1,739,940.00 and Y = 493,300.00; thence South 4,935.00 feet to a point having Coordinates of X = 1,739,940.00 and Y = 488,365.00; thence West 10,490.00 feet to a point having Coordinates of X = 1,729,450.00 and Y = 488,365.00; thence North 4,935.00 feet to the point of beginning, containing approximately **82 acres**, all as more particularly outlined on a plat on file in the Office of Mineral Resources, Department of Natural Resources. All bearings, distances and coordinates are based on Louisiana Coordinate System of 1927, (North or South Zone), where applicable.

NOTE: The above description of the Tract nominated for lease has been provided and corrected, where required, exclusively by the nomination party. Any mineral lease selected from this Tract and awarded by the Louisiana State Mineral Board shall be without warranty of any kind, either express, implied, or statutory, including, but not limited to, the implied warranties of merchantability and fitness for a particular purpose. Should the mineral lease awarded by the Louisiana State Mineral Board be subsequently modified, cancelled or abrogated due to the existence of conflicting leases, operating agreements, private claims or other future obligations or conditions which may affect all or any portion of the leased Tract, it shall not relieve the Lessee of the obligation to pay any bonus due thereon to the Louisiana State Mineral Board, nor shall the Louisiana State Mineral Board be obligated to refund any consideration paid by the Lessor prior to such modification, cancellation, or abrogation, including, but not limited to, bonuses, rentals and royalties.

Applicant: THEOPHILUS OIL, GAS & LAND SERVICES, LLC

Bidder	Cash Payment	Price/Acre	Rental	Oil	Gas	Other

Legend
09100009
Active_Leases
DOQQ2004



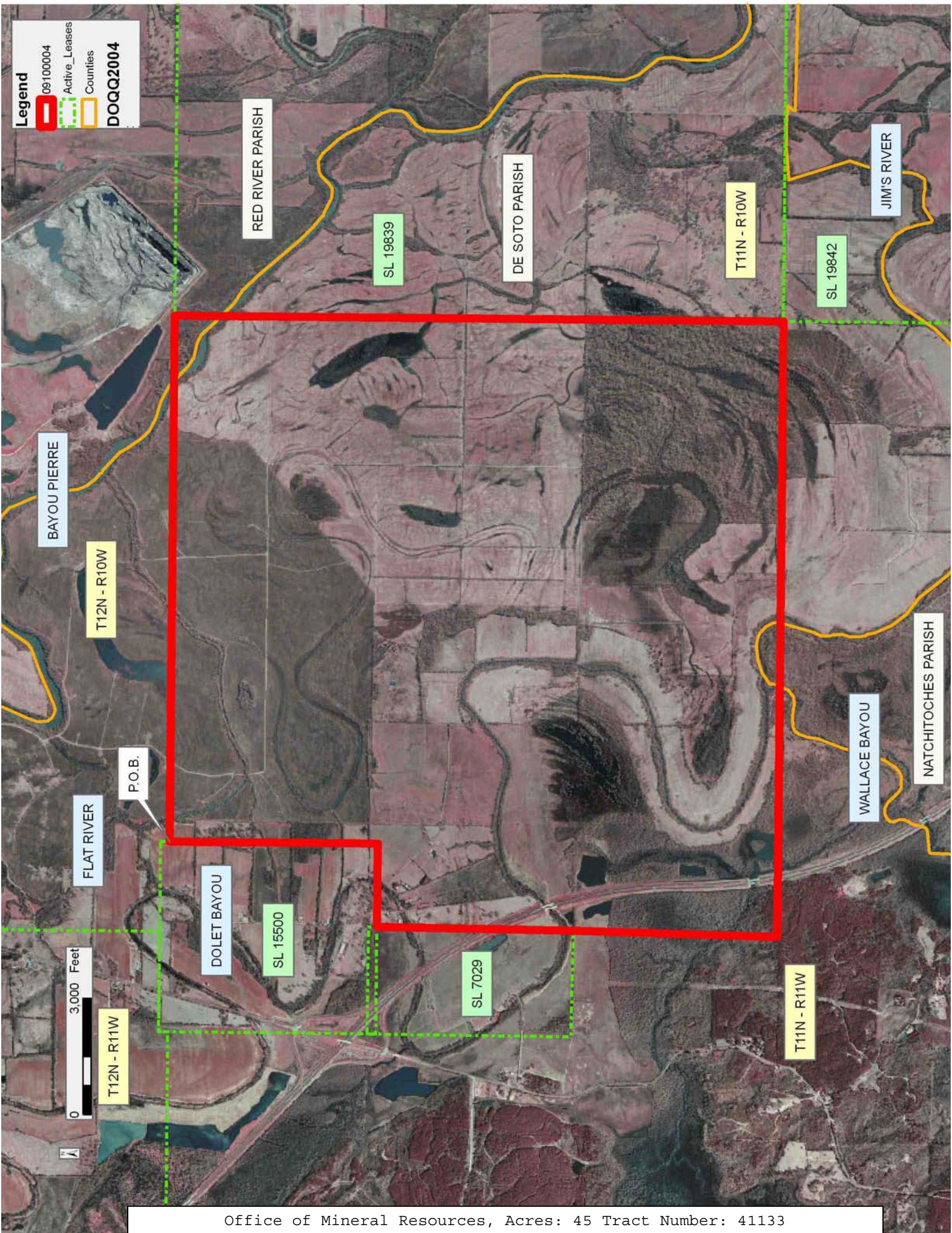
TRACT 41133 - De Soto Natchitoches and Red River Parishes, Louisiana

All of the lands now or formerly constituting the beds and bottoms of all water bodies of every nature and description as to which title is vested in the State of Louisiana, together with all islands arising therein and other lands formed by accretion or by reliction, where allowed by law, excepting tax adjudicated lands, and not presently under mineral lease on October 14, 2009, situated in De Soto Natchitoches and Red River Parishes, Louisiana, and more particularly described as follows: Beginning at a point on the East boundary of State Lease No. 15500 having Coordinates of X = 1,710,500.00 and Y = 477,365.00; thence East 13,565.00 feet to the Northwest corner of State Lease No. 19839 having Coordinates of X = 1,724,065.00 and Y = 477,365.00; thence South 15,695.00 feet along the West boundary of said State Lease No. 19839 to its Southwest corner, also being the Northwest corner of State Lease No. 19842 having Coordinates of X = 1,724,065.00 and Y = 461,670.00; thence West 15,875.00 feet to a point having Coordinates of X = 1,708,190.00 and Y = 461,670.00; thence Northerly approximately 5,259 feet to the Southeast corner of State Lease No. 7029, as amended; thence Northerly approximately 5,072 feet along the East boundary of said State Lease No. 7029 to a point on the South boundary of said State Lease No. 15500 having a Coordinate of Y = 472,000.00; thence along the South and East boundary of said State Lease No. 15500 the following courses and distances: East approximately 2,150 feet to a point having Coordinates of X = 1,710,500.00 and Y = 472,000.00 and North 5,365.00 feet to the point of beginning, containing approximately **45 acres**, all as more particularly outlined on a plat on file in the Office of Mineral Resources, Department of Natural Resources. All bearings, distances and coordinates are based on Louisiana Coordinate System of 1927, (North or South Zone), where applicable.

NOTE: The above description of the Tract nominated for lease has been provided and corrected, where required, exclusively by the nomination party. Any mineral lease selected from this Tract and awarded by the Louisiana State Mineral Board shall be without warranty of any kind, either express, implied, or statutory, including, but not limited to, the implied warranties of merchantability and fitness for a particular purpose. Should the mineral lease awarded by the Louisiana State Mineral Board be subsequently modified, cancelled or abrogated due to the existence of conflicting leases, operating agreements, private claims or other future obligations or conditions which may affect all or any portion of the leased Tract, it shall not relieve the Lessee of the obligation to pay any bonus due thereon to the Louisiana State Mineral Board, nor shall the Louisiana State Mineral Board be obligated to refund any consideration paid by the Lessor prior to such modification, cancellation, or abrogation, including, but not limited to, bonuses, rentals and royalties.

Applicant: THEOPHILUS OIL, GAS & LAND SERVICES, LLC

Bidder	Cash Payment	Price/Acre	Rental	Oil	Gas	Other



Legend
09100004
Active_Leases
Counties
DOQQ2004

RED RIVER PARISH

DE SOTO PARISH

JIM'S RIVER

SL 19839

T11N - R10W

SL 19842

BAYOU PIERRE

T12N - R10W

P.O.B.

FLAT RIVER

DOLET BAYOU

SL 15500

SL 7029

WALLACE BAYOU

NATCHITOCHES PARISH

T12N - R11W

T11N - R11W

0 3,000 Feet

TRACT 41134 - De Soto Parish, Louisiana

All of the lands now or formerly constituting the beds and bottoms of all water bodies of every nature and description as to which title is vested in the State of Louisiana, together with all islands arising therein and other lands formed by accretion or by reliction, where allowed by law, excepting tax adjudicated lands, and not presently under mineral lease on October 14, 2009, situated in De Soto Parish, Louisiana, and more particularly described as follows: Beginning at the Southwest corner of State Lease No. 19838 having Coordinates of X = 1,692,315.00 and Y = 477,365.00; thence East 13,285.00 feet along the South boundary of said State Lease No. 19838 to a point on the West boundary of State Lease No. 15500 having Coordinates of X = 1,705,600.00 and Y = 477,365.00; thence South approximately 5,139 feet along the West boundary of said State Lease No. 15500 to a point on the North boundary of State Lease No. 7029, as amended having a Coordinate of X = 1,705,600.00; thence along the North, West and South boundary of said State Lease No. 7029 the following courses and distances: Westerly approximately 6 feet, Southerly approximately 5,253 feet and Easterly approximately 2,733 feet to its Southeast corner; thence Southerly approximately 5,259 feet to a point having Coordinates of X = 1,708,190.00 and Y = 461,670.00; thence West 15,875.00 feet to a point having Coordinates of X = 1,692,315.00 and Y = 461,670.00; thence North 15,695.00 feet to the point of beginning, containing approximately **6 acres**, all as more particularly outlined on a plat on file in the Office of Mineral Resources, Department of Natural Resources. All bearings, distances and coordinates are based on Louisiana Coordinate System of 1927, (North or South Zone), where applicable.

NOTE: The above description of the Tract nominated for lease has been provided and corrected, where required, exclusively by the nomination party. Any mineral lease selected from this Tract and awarded by the Louisiana State Mineral Board shall be without warranty of any kind, either express, implied, or statutory, including, but not limited to, the implied warranties of merchantability and fitness for a particular purpose. Should the mineral lease awarded by the Louisiana State Mineral Board be subsequently modified, cancelled or abrogated due to the existence of conflicting leases, operating agreements, private claims or other future obligations or conditions which may affect all or any portion of the leased Tract, it shall not relieve the Lessee of the obligation to pay any bonus due thereon to the Louisiana State Mineral Board, nor shall the Louisiana State Mineral Board be obligated to refund any consideration paid by the Lessor prior to such modification, cancellation, or abrogation, including, but not limited to, bonuses, rentals and royalties.

Applicant: THEOPHILUS OIL, GAS & LAND SERVICES, LLC

Bidder	Cash Payment	Price/Acre	Rental	Oil	Gas	Other

Legend
09100006
Active_Leases
DOQQ2004

FLAT RIVER

T11N - R10W

T12N - R10W

SL 15500

SL 7029

DOLET BAYOU

SL 19838

0 3,000 Feet

T12N - R11W

P.O.B.

T11N - R11W

DE SOTO PARISH

TRACT 41135 - De Soto and Natchitoches Parishes, Louisiana

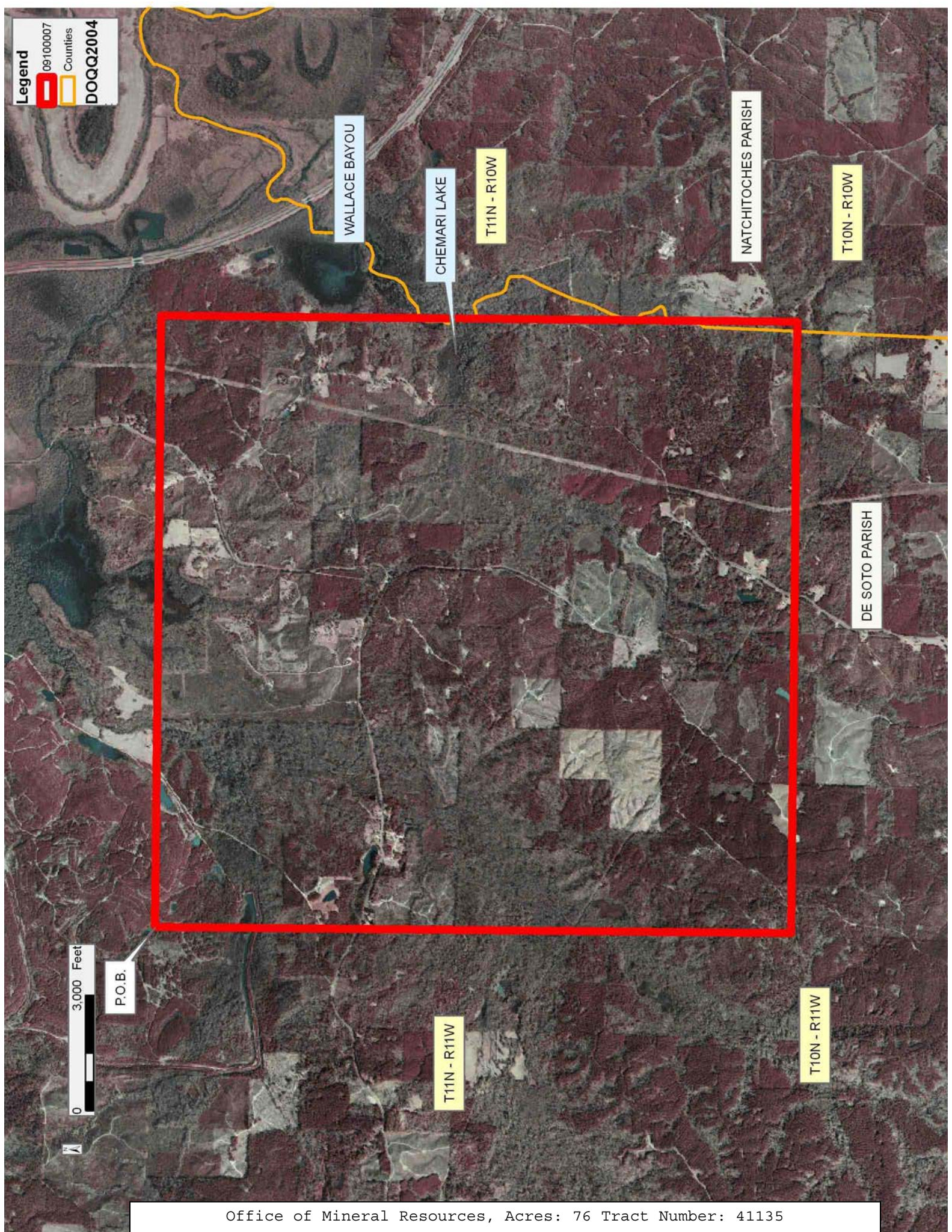
All of the lands now or formerly constituting the beds and bottoms of all water bodies of every nature and description as to which title is vested in the State of Louisiana, together with all islands arising therein and other lands formed by accretion or by reliction, where allowed by law, excepting tax adjudicated lands, and not presently under mineral lease on October 14, 2009, situated in De Soto and Natchitoches Parishes, Louisiana, and more particularly described as follows: Beginning at a point having Coordinates of X = 1,692,315.00 and Y = 461,670.00; thence East 15,875.00 feet to a point having Coordinates of X = 1,708,190.00 and Y = 461,670.00; thence South 16,510.00 feet to a point having Coordinates of X = 1,708,190.00 and Y = 445,160.00; thence West 15,875.00 feet to a point having Coordinates of X = 1,692,315.00 and Y = 445,160.00; thence North 16,510.00 feet to the point of beginning, containing approximately **76 acres**, all as more particularly outlined on a plat on file in the Office of Mineral Resources, Department of Natural Resources. All bearings, distances and coordinates are based on Louisiana Coordinate System of 1927, (North or South Zone), where applicable.

NOTE: The above description of the Tract nominated for lease has been provided and corrected, where required, exclusively by the nomination party. Any mineral lease selected from this Tract and awarded by the Louisiana State Mineral Board shall be without warranty of any kind, either express, implied, or statutory, including, but not limited to, the implied warranties of merchantability and fitness for a particular purpose. Should the mineral lease awarded by the Louisiana State Mineral Board be subsequently modified, cancelled or abrogated due to the existence of conflicting leases, operating agreements, private claims or other future obligations or conditions which may affect all or any portion of the leased Tract, it shall not relieve the Lessee of the obligation to pay any bonus due thereon to the Louisiana State Mineral Board, nor shall the Louisiana State Mineral Board be obligated to refund any consideration paid by the Lessor prior to such modification, cancellation, or abrogation, including, but not limited to, bonuses, rentals and royalties.

Applicant: THEOPHILUS OIL, GAS & LAND SERVICES, LLC

Bidder	Cash Payment	Price/Acre	Rental	Oil	Gas	Other

Legend
09100007
Counties
DOQQ2004



WALLACE BAYOU

CHEMARI LAKE

T11N - R10W

NATCHITOCHE PARISH

T10N - R10W

DE SOTO PARISH

0 3,000 Feet

P.O.B.

T11N - R11W

T10N - R11W

TRACT 41136 - De Soto and Natchitoches Parishes, Louisiana

All of the lands now or formerly constituting the beds and bottoms of all water bodies of every nature and description as to which title is vested in the State of Louisiana, together with all islands arising therein and other lands formed by accretion or by reliction, where allowed by law, excepting tax adjudicated lands, and not presently under mineral lease on October 14, 2009, situated in De Soto and Natchitoches Parishes, Louisiana, and more particularly described as follows: Beginning at a point having Coordinates of X = 1,708,190.00 and Y = 461,670.00; thence East 15,875.00 feet to the Southwest corner of State Lease No. 19839, also being the Northwest corner of State Lease No. 19842 having Coordinates of X = 1,724,065.00 and Y = 461,670.00; thence South 16,510.00 feet along the West boundary of said State Lease No. 19842 to its Southwest corner having Coordinates of X = 1,724,065.00 and Y = 445,160.00; thence West 15,875.00 feet to a point having Coordinates of X = 1,708,190.00 and Y = 445,160.00; thence North 16,510.00 feet to the point of beginning, containing approximately **37 acres**, all as more particularly outlined on a plat on file in the Office of Mineral Resources, Department of Natural Resources. All bearings, distances and coordinates are based on Louisiana Coordinate System of 1927, (North or South Zone), where applicable.

NOTE: The above description of the Tract nominated for lease has been provided and corrected, where required, exclusively by the nomination party. Any mineral lease selected from this Tract and awarded by the Louisiana State Mineral Board shall be without warranty of any kind, either express, implied, or statutory, including, but not limited to, the implied warranties of merchantability and fitness for a particular purpose. Should the mineral lease awarded by the Louisiana State Mineral Board be subsequently modified, cancelled or abrogated due to the existence of conflicting leases, operating agreements, private claims or other future obligations or conditions which may affect all or any portion of the leased Tract, it shall not relieve the Lessee of the obligation to pay any bonus due thereon to the Louisiana State Mineral Board, nor shall the Louisiana State Mineral Board be obligated to refund any consideration paid by the Lessor prior to such modification, cancellation, or abrogation, including, but not limited to, bonuses, rentals and royalties.

Bidder	Cash Payment	Price/Acre	Rental	Oil	Gas	Other

Applicant: THEOPHILUS OIL, GAS & LAND SERVICES, LLC

Legend

- 09100005 Active_Leases
- Counties
- DOQQ2004

SL 19839

NATCHITOCHE PARISH

JIM'S RIVER

SL 19842

T11N - R10W

DE SOTO PARISH

DOLET BAYOU

T10N - R10W

0 3,000 Feet

P.O.B.

WALLACE BAYOU

T11N - R11W

T10N - R11W

TRACT 41137 - Catahoula Parish, Louisiana

All of the lands now or formerly constituting the beds and bottoms of all water bodies of every nature and description as to which title is vested in the State of Louisiana, together with all islands arising therein and other lands formed by accretion or by reliction, where allowed by law, excepting tax adjudicated lands, and not presently under mineral lease on October 14, 2009, situated in Catahoula Parish, Louisiana, and more particularly described as follows: Beginning at a point having Coordinates of X = 2,169,550.00 and Y = 252,400.00; thence East 16,025.00 feet to a point having Coordinates of X = 2,185,575.00 and Y = 252,400.00; thence South 10,600.00 feet to a point having Coordinates of X = 2,185,575.00 and Y = 241,800.00; thence West 16,025.00 feet to a point having Coordinates of X = 2,169,550.00 and Y = 241,800.00; thence North 10,600.00 feet to the point of beginning, **LESS AND EXCEPT** all that portion of the Dewey W. Wills Wildlife Management Area, which may lie within the above described tract, containing approximately **451 acres**, all as more particularly outlined on a plat on file in the Office of Mineral Resources, Department of Natural Resources. All bearings, distances and coordinates are based on Louisiana Coordinate System of 1927, (North or South Zone), where applicable.

NOTE: The above description of the Tract nominated for lease has been provided and corrected, where required, exclusively by the nomination party. Any mineral lease selected from this Tract and awarded by the Louisiana State Mineral Board shall be without warranty of any kind, either express, implied, or statutory, including, but not limited to, the implied warranties of merchantability and fitness for a particular purpose. Should the mineral lease awarded by the Louisiana State Mineral Board be subsequently modified, cancelled or abrogated due to the existence of conflicting leases, operating agreements, private claims or other future obligations or conditions which may affect all or any portion of the leased Tract, it shall not relieve the Lessee of the obligation to pay any bonus due thereon to the Louisiana State Mineral Board, nor shall the Louisiana State Mineral Board be obligated to refund any consideration paid by the Lessor prior to such modification, cancellation, or abrogation, including, but not limited to, bonuses, rentals and royalties.

Applicant: THEOPHILUS OIL, GAS & LAND SERVICES, LLC

Bidder	Cash Payment	Price/Acre	Rental	Oil	Gas	Other

Legend

- 09100042
- Wildlife
- DOQQ2004

CATAHOULA PARISH

T5N - R6E

T4N - R6E

T5N - R5E

LARTO LAKE

DEWEY WILLS WMA

T4N - R5E

P.O.B.



TRACT 41138 - Catahoula Parish, Louisiana

All of the lands now or formerly constituting the beds and bottoms of all water bodies of every nature and description as to which title is vested in the State of Louisiana, together with all islands arising therein and other lands formed by accretion or by reliction, where allowed by law, excepting tax adjudicated lands, and not presently under mineral lease on October 14, 2009, situated in the Dewey W. Wills Wildlife Management Area, Catahoula Parish, Louisiana, and more particularly described as follows: Beginning at a point having Coordinates of X = 2,169,550.00 and Y = 252,400.00; thence East 16,025.00 feet to a point having Coordinates of X = 2,185,575.00 and Y = 252,400.00; thence South 10,600.00 feet to a point having Coordinates of X = 2,185,575.00 and Y = 241,800.00; thence West 16,025.00 feet to a point having Coordinates of X = 2,169,550.00 and Y = 241,800.00; thence North 10,600.00 feet to the point of beginning, **LESS AND EXCEPT** all that portion which may lie outside of the Dewey W. Wills Wildlife Management Area, containing approximately **266 acres**, all as more particularly outlined on a plat on file in the Office of Mineral Resources, Department of Natural Resources. All bearings, distances and coordinates are based on Louisiana Coordinate System of 1927, (North or South Zone), where applicable.

NOTE: The above description of the Tract nominated for lease has been provided and corrected, where required, exclusively by the nomination party. Any mineral lease selected from this Tract and awarded by the Louisiana State Mineral Board shall be without warranty of any kind, either express, implied, or statutory, including, but not limited to, the implied warranties of merchantability and fitness for a particular purpose. Should the mineral lease awarded by the Louisiana State Mineral Board be subsequently modified, cancelled or abrogated due to the existence of conflicting leases, operating agreements, private claims or other future obligations or conditions which may affect all or any portion of the leased Tract, it shall not relieve the Lessee of the obligation to pay any bonus due thereon to the Louisiana State Mineral Board, nor shall the Louisiana State Mineral Board be obligated to refund any consideration paid by the Lessor prior to such modification, cancellation, or abrogation, including, but not limited to, bonuses, rentals and royalties.

NOTE: The mineral lease is located in the Dewey W. Wills WMA under the jurisdiction of the Louisiana Department of Wildlife and Fisheries which has promulgated rules and regulations for the protection of game and wildlife on the aforesaid Tract and, therefore, shall be subject to said rules and regulations, a copy of which shall be attached to the mineral lease. In addition to the specific rules and regulations applicable, the following shall apply regarding operations under this mineral lease:

1. No activities will be allowed without written authorization from the Louisiana Department of Wildlife and Fisheries.
2. Proposed projects will be evaluated on a case by case basis. Modifications to proposed project features including but not limited to

access routes, spoil placement, well sites, flowlines and appurtenant structures may be required by the Department of Wildlife and Fisheries.

3. Compliance with the said WMA regulations will be required unless otherwise specified by the Department of Wildlife and Fisheries.

4. Compensatory mitigation will be required to offset unavoidable wetland impacts.

5. Removal of all structures, facilities and equipment will be required within 120 days of abandonment unless otherwise agreed to in writing by the Louisiana Department of Wildlife and Fisheries.

6. No activities will be allowed during the hunting season unless approved by the Department.

7. Prior to submitting applications for wetland permits to Federal and State permitting agencies the leaseholder shall coordinate project details with the Department of Wildlife and Fisheries. Contact person for the Department will be Mike Windham at (504) 284-5268.

Additionally, the Department will require a minimum bonus of \$150.00 per acre and a minimum royalty of 25%.

Applicant: THEOPHILUS OIL, GAS & LAND SERVICES, LLC

Bidder	Cash Payment	Price/Acre	Rental	Oil	Gas	Other

Legend
 09100046
 Wildlife
 DOQQ2004

CATAHOULA PARISH

LARTO LAKE

T5N - R5E

SALINE BAYOU

DEWEY W WILLS WMA



P.O.B.

T4N - R5E

TRACT 41139 - Catahoula and Concordia Parishes, Louisiana

All of the lands now or formerly constituting the beds and bottoms of all water bodies of every nature and description as to which title is vested in the State of Louisiana, together with all islands arising therein and other lands formed by accretion or by reliction, where allowed by law, excepting tax adjudicated lands, and not presently under mineral lease on October 14, 2009, situated in Catahoula and Concordia Parishes, Louisiana, and more particularly described as follows: Beginning at a point having Coordinates of X = 2,185,575.00 and Y = 252,400.00; thence East 16,025.00 feet to a point having Coordinates of X = 2,201,600.00 and Y = 252,400.00; thence South 10,600.00 feet to a point having Coordinates of X = 2,201,600.00 and Y = 241,800.00; thence West 16,025.00 feet to a point having Coordinates of X = 2,185,575.00 and Y = 241,800.00; thence North 10,600.00 feet to the point of beginning, **LESS AND EXCEPT** all that portion of the Dewey W. Wills Wildlife Management Area, which may lie within the above described tract, containing approximately **492 acres**, all as more particularly outlined on a plat on file in the Office of Mineral Resources, Department of Natural Resources. All bearings, distances and coordinates are based on Louisiana Coordinate System of 1927, (North or South Zone), where applicable.

NOTE: The above description of the Tract nominated for lease has been provided and corrected, where required, exclusively by the nomination party. Any mineral lease selected from this Tract and awarded by the Louisiana State Mineral Board shall be without warranty of any kind, either express, implied, or statutory, including, but not limited to, the implied warranties of merchantability and fitness for a particular purpose. Should the mineral lease awarded by the Louisiana State Mineral Board be subsequently modified, cancelled or abrogated due to the existence of conflicting leases, operating agreements, private claims or other future obligations or conditions which may affect all or any portion of the leased Tract, it shall not relieve the Lessee of the obligation to pay any bonus due thereon to the Louisiana State Mineral Board, nor shall the Louisiana State Mineral Board be obligated to refund any consideration paid by the Lessor prior to such modification, cancellation, or abrogation, including, but not limited to, bonuses, rentals and royalties.

Bidder	Cash Payment	Price/Acre	Rental	Oil	Gas	Other

Applicant: THEOPHILUS OIL, GAS & LAND SERVICES, LLC

0910004:
Wildlife
Counties
DOQQ2004

