

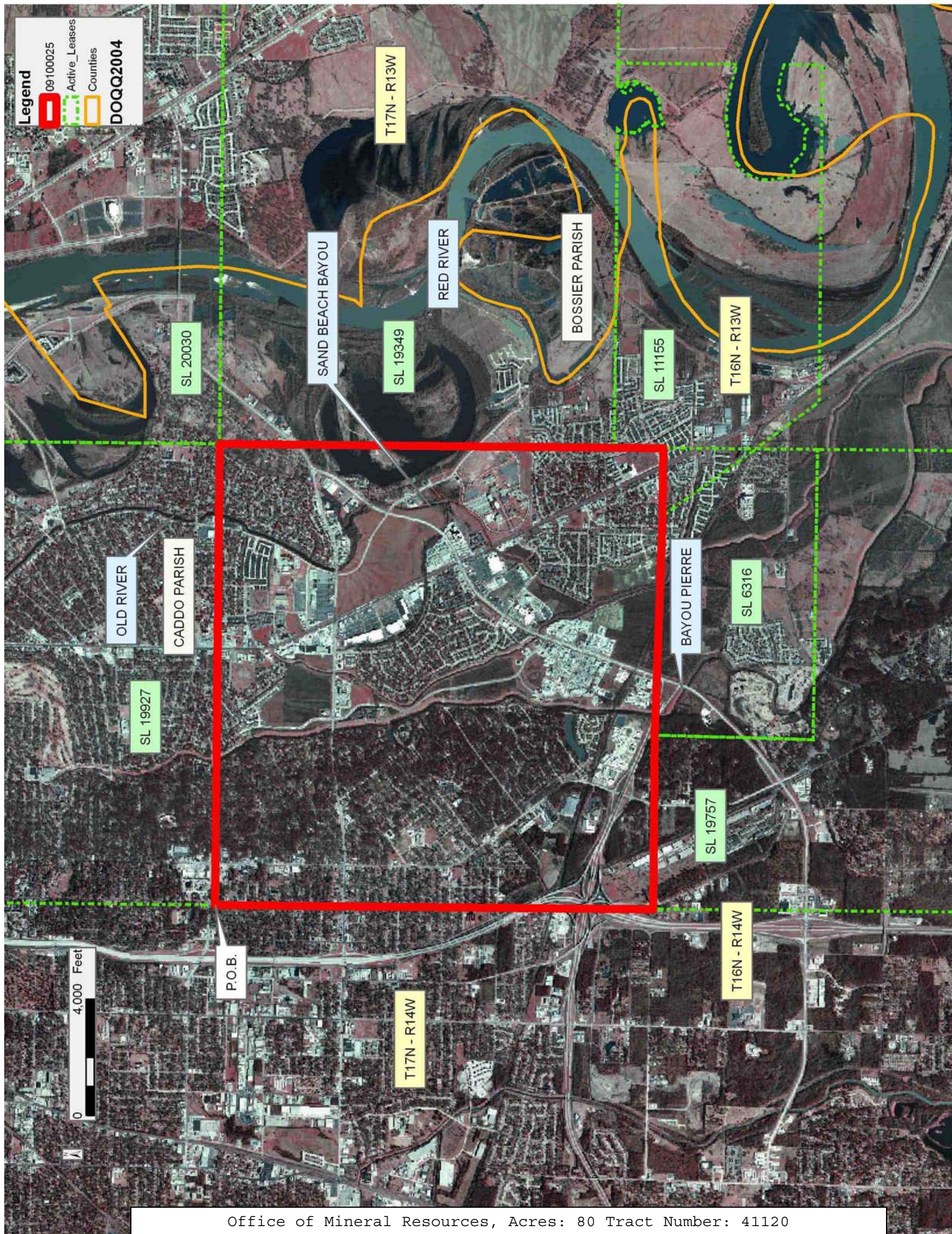
TRACT 41120 - Caddo Parish, Louisiana

All of the lands now or formerly constituting the beds and bottoms of all water bodies of every nature and description as to which title is vested in the State of Louisiana, together with all islands arising therein and other lands formed by accretion or by reliction, where allowed by law, excepting tax adjudicated lands, and not presently under mineral lease on October 14, 2009, situated in Caddo Parish, Louisiana, and more particularly described as follows: Beginning at the Southwest corner of State Lease No. 19927 having Coordinates of X = 1,614,260.00 and Y = 652,364.67: thence East 15,840.00 feet along the South boundary of said State Lease No. 19927 to its Southeast corner also being the Southwest corner of State Lease No. 20030 and the Northwest corner of State Lease No. 19349 having Coordinates of X = 1,630,100.00 and Y = 652,364.67; thence South 13,564.67 feet along the West boundary of said State Lease No. 19349 to its Southwest corner, also being the Northwest corner of State Lease No. 11155, as amended, having Coordinates of X = 1,630,100.00 and Y = 638,800.00; thence South 1,681.21 feet along the West boundary of said State Lease No. 11155 to a point having Coordinates of X = 1,630,100.00 and Y = 637,118.79; thence Westerly approximately 2,364 feet to the Northeast corner of State Lease No. 6316, as amended; thence Westerly approximately 7,504 feet along the North boundary of said State Lease No. 6316 to its Northwest corner also being the Northeast corner of State Lease No. 19757; thence Westerly approximately 5,973 feet along the North boundary of said State Lease No. 19757 to its Northwest corner having Coordinates of X = 1,614,260.00 and Y = 637,320.80; thence North 15,043.87 feet to the point of beginning, (This lease includes only waterbottoms claimed and owned by the state and specifically excludes any land which the state may claim or own and to which the mineral rights are vested in the state), containing approximately **80 acres**, all as more particularly outlined on a plat on file in the Office of Mineral Resources, Department of Natural Resources. All bearings, distances and coordinates are based on Louisiana Coordinate System of 1927, (North or South Zone), where applicable.

NOTE: The above description of the Tract nominated for lease has been provided and corrected, where required, exclusively by the nomination party. Any mineral lease selected from this Tract and awarded by the Louisiana State Mineral Board shall be without warranty of any kind, either express, implied, or statutory, including, but not limited to, the implied warranties of merchantability and fitness for a particular purpose. Should the mineral lease awarded by the Louisiana State Mineral Board be subsequently modified, cancelled or abrogated due to the existence of conflicting leases, operating agreements, private claims or other future obligations or conditions which may affect all or any portion of the leased Tract, it shall not relieve the Lessee of the obligation to pay any bonus due thereon to the Louisiana State Mineral Board, nor shall the Louisiana State Mineral Board be obligated to refund any consideration paid by the Lessor prior to such modification, cancellation, or abrogation, including, but not limited to, bonuses, rentals and royalties.

Applicant: THEOPHILUS OIL, GAS & LAND SERVICES, LLC

Bidder	Cash Payment	Price/ Acre	Rental	Oil	Gas	Other



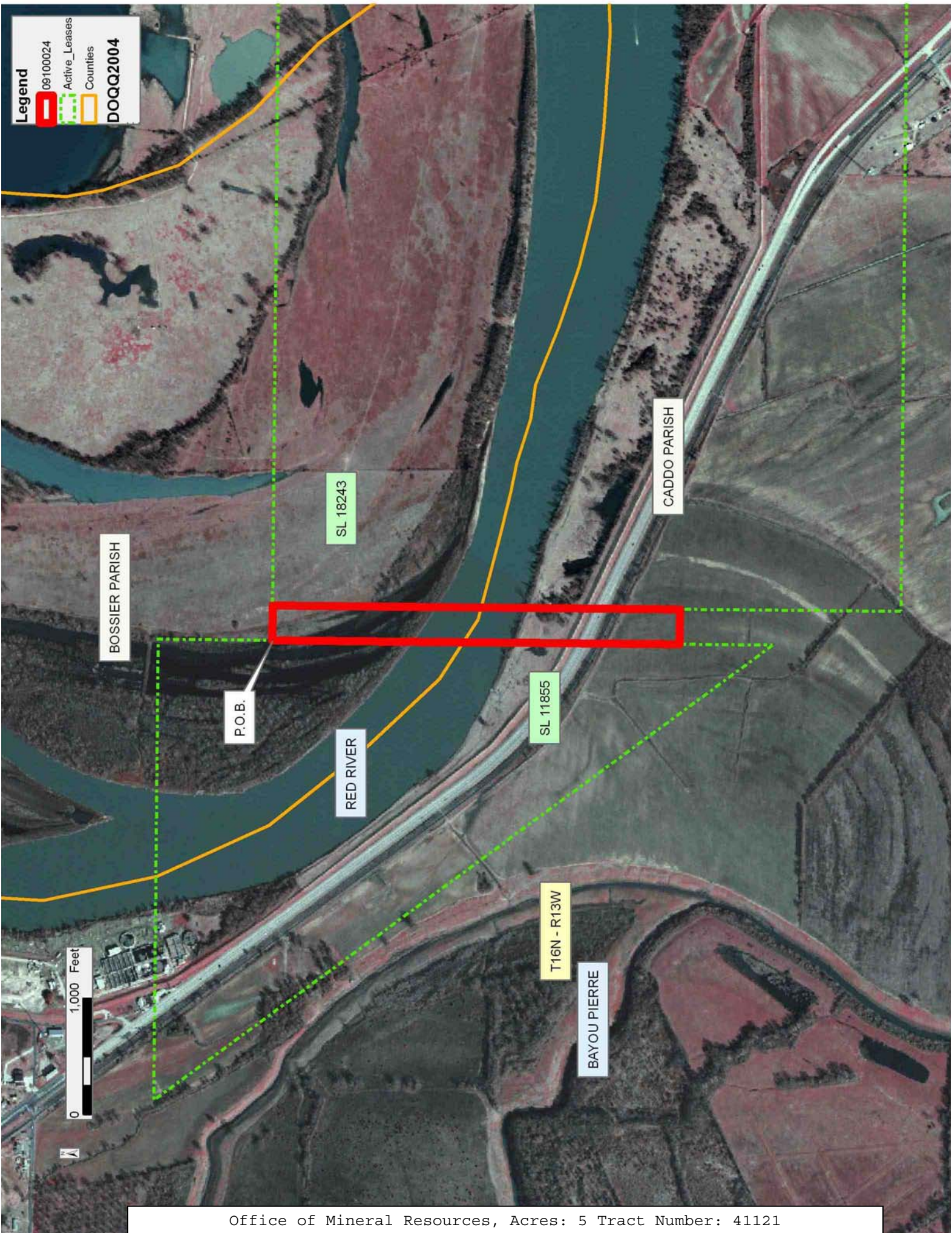
TRACT 41121 - Bossier and Caddo Parishes, Louisiana

All of the lands now or formerly constituting the beds and bottoms of all water bodies of every nature and description as to which title is vested in the State of Louisiana, together with all islands arising therein and other lands formed by accretion or by reliction, where allowed by law, excepting tax adjudicated lands, and not presently under mineral lease on October 14, 2009, situated in Bossier and Caddo Parishes, Louisiana, and more particularly described as follows: Beginning at a point on the East boundary of State Lease No. 11855 having Coordinates of X = 1,635,700.00 and Y = 630,800.00; thence East 300.00 feet to the Northwest corner of State Lease No. 18243 having Coordinates of X = 1,636,000.00 and Y = 630,800.00; thence South 3,500.00 feet along the West boundary of said State Lease No. 18243 to a point having Coordinates of X = 1,636,000.00 and Y = 627,300.00; thence West 300.00 feet to a point on the East boundary of said State Lease No. 11855 having Coordinates of X = 1,635,700.00 and Y = 627,300.00; thence North 3,500.00 feet along the East boundary of said State Lease No. 11855 to the point of beginning, containing approximately **5 acres**, all as more particularly outlined on a plat on file in the Office of Mineral Resources, Department of Natural Resources. All bearings, distances and coordinates are based on Louisiana Coordinate System of 1927, (North or South Zone), where applicable.

NOTE: The above description of the Tract nominated for lease has been provided and corrected, where required, exclusively by the nomination party. Any mineral lease selected from this Tract and awarded by the Louisiana State Mineral Board shall be without warranty of any kind, either express, implied, or statutory, including, but not limited to, the implied warranties of merchantability and fitness for a particular purpose. Should the mineral lease awarded by the Louisiana State Mineral Board be subsequently modified, cancelled or abrogated due to the existence of conflicting leases, operating agreements, private claims or other future obligations or conditions which may affect all or any portion of the leased Tract, it shall not relieve the Lessee of the obligation to pay any bonus due thereon to the Louisiana State Mineral Board, nor shall the Louisiana State Mineral Board be obligated to refund any consideration paid by the Lessor prior to such modification, cancellation, or abrogation, including, but not limited to, bonuses, rentals and royalties.

Bidder	Cash Payment	Price/ Acre	Rental	Oil	Gas	Other

Applicant: THEOPHILUS OIL, GAS & LAND SERVICES, LLC



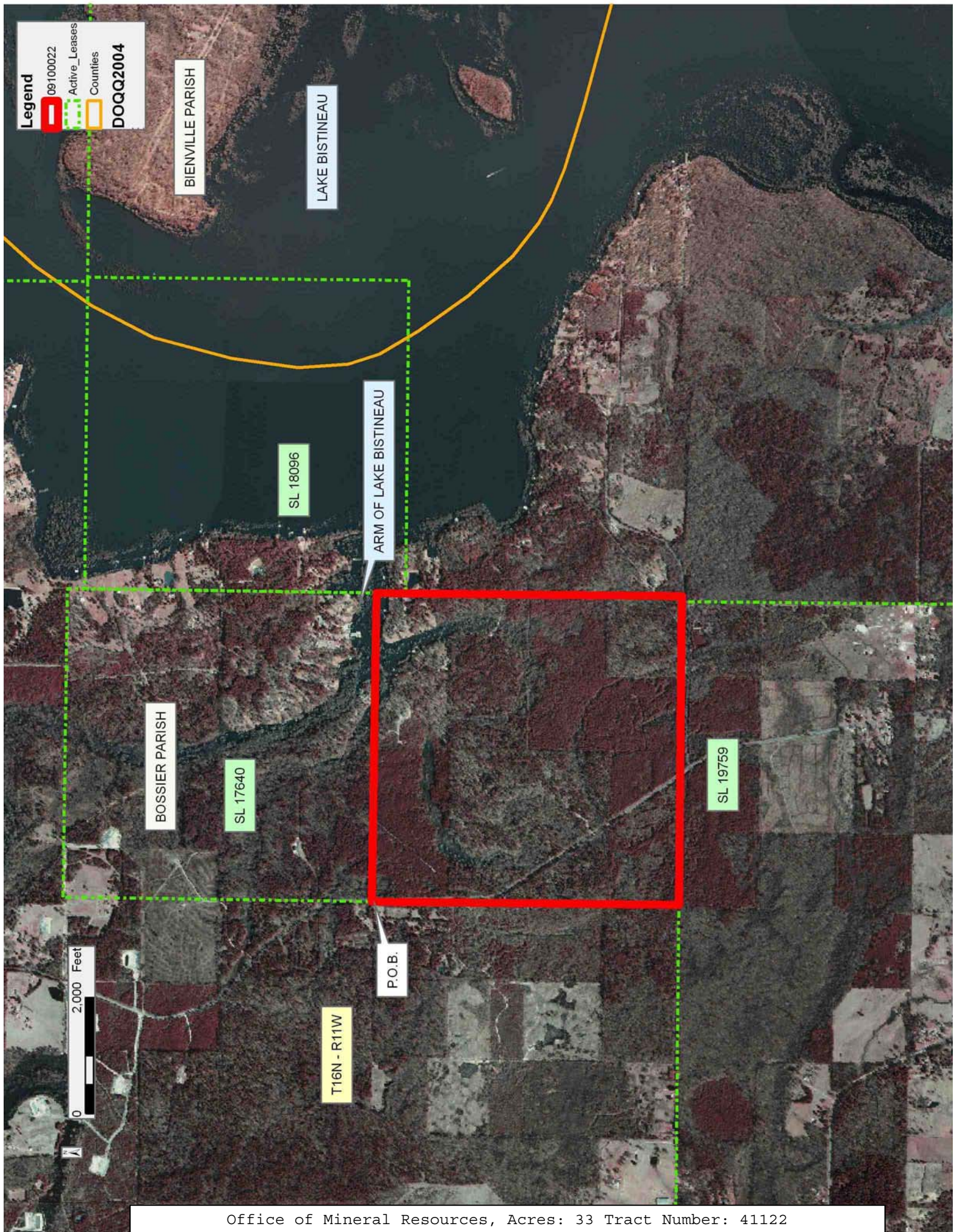
TRACT 41122 - Bossier Parish, Louisiana

All of the lands now or formerly constituting the beds and bottoms of all water bodies of every nature and description as to which title is vested in the State of Louisiana, together with all islands arising therein and other lands formed by accretion or by reliction, where allowed by law, excepting tax adjudicated lands, and not presently under mineral lease on October 14, 2009, situated in Bossier Parish, Louisiana, and more particularly described as follows: Beginning at the Southwest corner of State Lease No. 17640 having Coordinates of X = 1,704,181.42 and Y = 624,930.60; thence South 89 degrees 44 minutes 00 seconds East 5,309.99 feet along the South boundary of said State Lease No. 17640 to its Southeast corner located on the West boundary of State Lease No. 18096, as amended, having Coordinates of X = 1,709,491.35 and Y = 624,905.90; thence South 505.90 feet along the West boundary of said State Lease No. 18096 to its Southwest corner having Coordinates of X = 1,709,491.35 and Y = 624,400.00; thence South 4,747.60 feet to a point having Coordinates of X = 1,709,491.35 and Y = 619,652.40; thence West 98.40 feet to the Northeast corner of State Lease No. 19759 having Coordinates of X = 1,709,392.95 and Y = 619,652.40; thence West 5,211.53 feet along the North boundary of said State Lease No. 19759 to a point having Coordinates of X = 1,704,181.42 and Y = 619,652.40; thence North 5,278.20 feet to the point of beginning, containing approximately **33 acres**, all as more particularly outlined on a plat on file in the Office of Mineral Resources, Department of Natural Resources. All bearings, distances and coordinates are based on Louisiana Coordinate System of 1927, (North or South Zone), where applicable.

NOTE: The above description of the Tract nominated for lease has been provided and corrected, where required, exclusively by the nomination party. Any mineral lease selected from this Tract and awarded by the Louisiana State Mineral Board shall be without warranty of any kind, either express, implied, or statutory, including, but not limited to, the implied warranties of merchantability and fitness for a particular purpose. Should the mineral lease awarded by the Louisiana State Mineral Board be subsequently modified, cancelled or abrogated due to the existence of conflicting leases, operating agreements, private claims or other future obligations or conditions which may affect all or any portion of the leased Tract, it shall not relieve the Lessee of the obligation to pay any bonus due thereon to the Louisiana State Mineral Board, nor shall the Louisiana State Mineral Board be obligated to refund any consideration paid by the Lessor prior to such modification, cancellation, or abrogation, including, but not limited to, bonuses, rentals and royalties.

Applicant: THEOPHILUS OIL, GAS & LAND SERVICES, LLC

Bidder	Cash Payment	Price/ Acre	Rental	Oil	Gas	Other



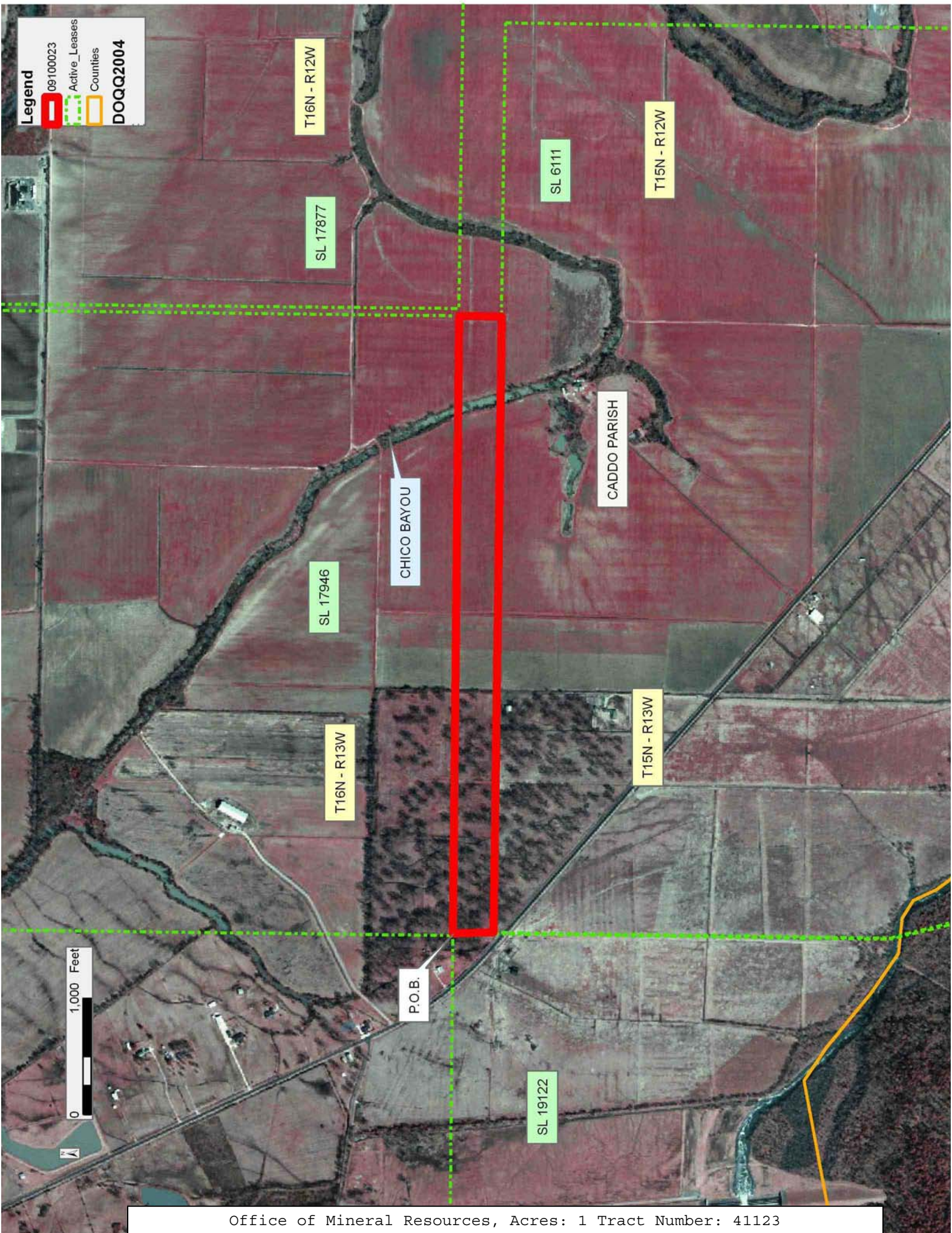
TRACT 41123 - Caddo Parish, Louisiana

All of the lands now or formerly constituting the beds and bottoms of all water bodies of every nature and description as to which title is vested in the State of Louisiana, together with all islands arising therein and other lands formed by accretion or by reliction, where allowed by law, excepting tax adjudicated lands, and not presently under mineral lease on October 14, 2009, situated in Caddo Parish, Louisiana, and more particularly described as follows: Beginning at the Northeast corner of State Lease No. 19122 located on the South boundary of State Lease No. 17946, as amended having Coordinates of X = 1,640,890.00 and Y = 605,380.00; thence East 5,306.68 feet along the South boundary of said State Lease No. 17946 to its Southeast corner having Coordinates of X = 1,646,196.68 and Y = 605,380.00; thence South approximately 367 feet to a point on the North boundary of State Lease No. 6111 having a Coordinate of X = 1,646,196.68; thence Westerly approximately 5,293 feet along the North boundary of said State Lease No. 6111 to its Northwest corner located on the East boundary of said State Lease No. 19122; thence Northerly approximately 342 feet along the East boundary of said State Lease No. 19122 to the point of beginning, containing approximately **1 acre**, all as more particularly outlined on a plat on file in the Office of Mineral Resources, Department of Natural Resources. All bearings, distances and coordinates are based on Louisiana Coordinate System of 1927, (North or South Zone), where applicable.

NOTE: The above description of the Tract nominated for lease has been provided and corrected, where required, exclusively by the nomination party. Any mineral lease selected from this Tract and awarded by the Louisiana State Mineral Board shall be without warranty of any kind, either express, implied, or statutory, including, but not limited to, the implied warranties of merchantability and fitness for a particular purpose. Should the mineral lease awarded by the Louisiana State Mineral Board be subsequently modified, cancelled or abrogated due to the existence of conflicting leases, operating agreements, private claims or other future obligations or conditions which may affect all or any portion of the leased Tract, it shall not relieve the Lessee of the obligation to pay any bonus due thereon to the Louisiana State Mineral Board, nor shall the Louisiana State Mineral Board be obligated to refund any consideration paid by the Lessor prior to such modification, cancellation, or abrogation, including, but not limited to, bonuses, rentals and royalties.

Applicant: THEOPHILUS OIL, GAS & LAND SERVICES, LLC

Bidder	Cash Payment	Price/ Acre	Rental	Oil	Gas	Other



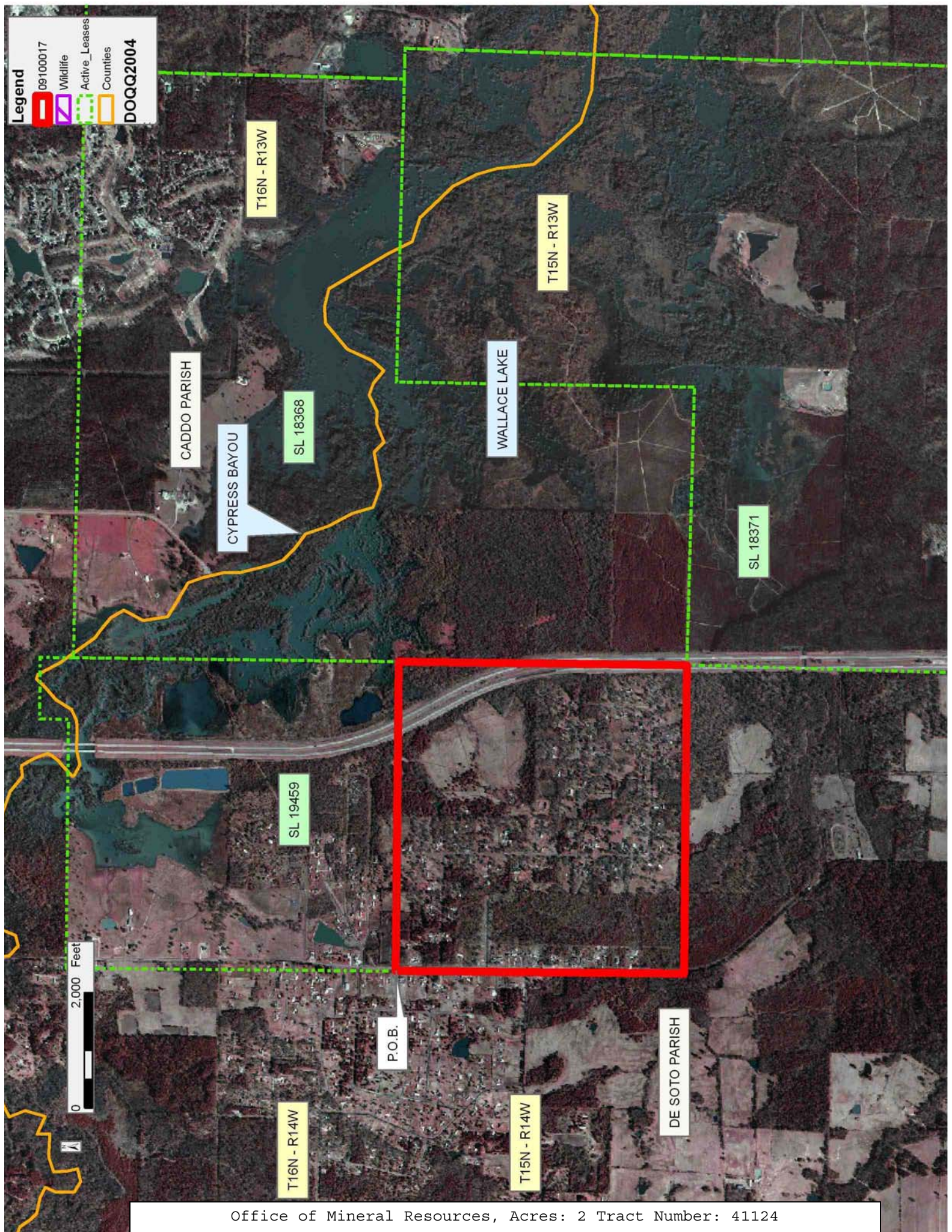
TRACT 41124 - De Soto Parish, Louisiana

All of the lands now or formerly constituting the beds and bottoms of all water bodies of every nature and description as to which title is vested in the State of Louisiana, together with all islands arising therein and other lands formed by accretion or by reliction, where allowed by law, excepting tax adjudicated lands, and not presently under mineral lease on October 14, 2009, situated in De Soto Parish, Louisiana, and more particularly described as follows: Beginning at the Southwest corner of State Lease No. 19459 having Coordinates of X = 1,609,650.00 and Y = 605,300.00; thence East 5,351.70 feet along the South boundary of said State Lease No. 19459 to its Southeast corner located on the West boundary of State Lease No. 18368 having Coordinates of X = 1,615,001.70 and Y = 605,300.00; thence South 00 degrees 07 minutes 56 seconds West 4,986.20 feet along the West boundary of said State Lease No. 18368 to its Southwest corner also being a Northwest corner of State Lease No. 18371, having Coordinates of X = 1,614,990.19 and Y = 600,313.81; thence West 5,340.19 feet to a point having Coordinates of X = 1,609,650.00 and Y = 600,313.81; thence North 4,986.19 feet to the point of beginning, containing approximately **2 acres**, all as more particularly outlined on a plat on file in the Office of Mineral Resources, Department of Natural Resources. All bearings, distances and coordinates are based on Louisiana Coordinate System of 1927, (North or South Zone), where applicable.

NOTE: The above description of the Tract nominated for lease has been provided and corrected, where required, exclusively by the nomination party. Any mineral lease selected from this Tract and awarded by the Louisiana State Mineral Board shall be without warranty of any kind, either express, implied, or statutory, including, but not limited to, the implied warranties of merchantability and fitness for a particular purpose. Should the mineral lease awarded by the Louisiana State Mineral Board be subsequently modified, cancelled or abrogated due to the existence of conflicting leases, operating agreements, private claims or other future obligations or conditions which may affect all or any portion of the leased Tract, it shall not relieve the Lessee of the obligation to pay any bonus due thereon to the Louisiana State Mineral Board, nor shall the Louisiana State Mineral Board be obligated to refund any consideration paid by the Lessor prior to such modification, cancellation, or abrogation, including, but not limited to, bonuses, rentals and royalties.

Applicant: THEOPHILUS OIL, GAS & LAND SERVICES, LLC

Bidder	Cash Payment	Price/ Acre	Rental	Oil	Gas	Other



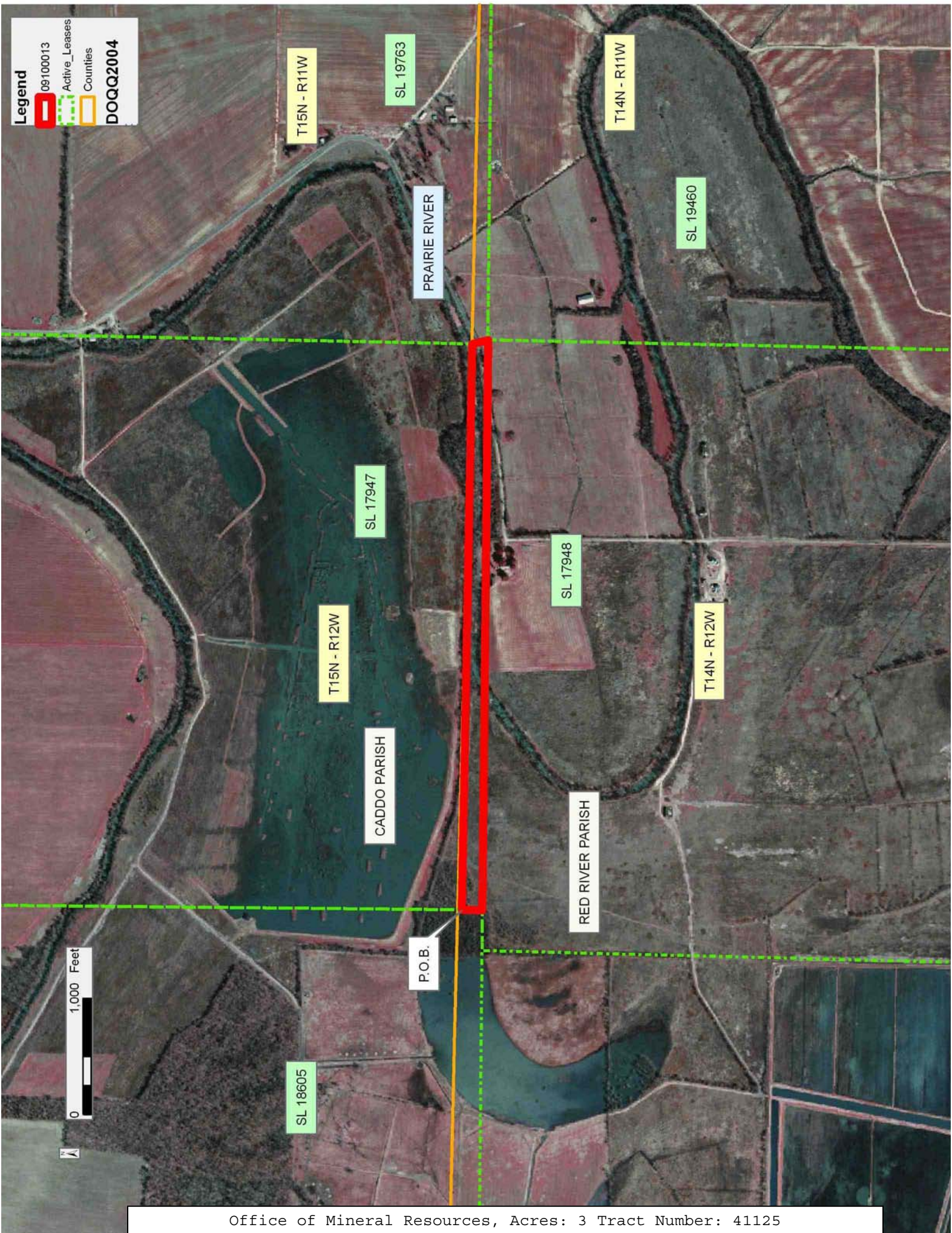
TRACT 41125 - Caddo and Red River Parishes, Louisiana

All of the lands now or formerly constituting the beds and bottoms of all water bodies of every nature and description as to which title is vested in the State of Louisiana, together with all islands arising therein and other lands formed by accretion or by reliction, where allowed by law, excepting tax adjudicated lands, and not presently under mineral lease on October 14, 2009, situated in Caddo and Red River Parishes, Louisiana, and more particularly described as follows: Beginning at the Southwest corner of State Lease No. 17947, as amended, said point located on the East boundary of State Lease No. 18605 having Coordinates of X = 1,672,700.00 and Y = 572,978.94; thence South 89 degrees 27 minutes 57 seconds East 4,864.46 feet along the South boundary of said State Lease No. 17947 to its Southeast corner located on the West boundary of State Lease No. 19763 having Coordinates of X = 1,677,564.25 and Y = 572,933.59; thence Southeasterly approximately 138 feet along the West boundary of said State Lease No. 19763 to its Southwest corner, also being the Northwest corner of State Lease No. 19460 and the Northeast corner of State Lease No. 17948, as amended having a Coordinate of Y = 572,800.00; thence West approximately 4,900 feet along the North boundary of said State Lease No. 17948 to the Southeast corner of said State Lease No. 18605 having Coordinates of X = 1,672,700.00 and Y = 572,800.00; thence North 178.94 feet along the East boundary of said State Lease No. 18605 to the point of beginning, containing approximately **3 acres**, all as more particularly outlined on a plat on file in the Office of Mineral Resources, Department of Natural Resources. All bearings, distances and coordinates are based on Louisiana Coordinate System of 1927, (North or South Zone), where applicable.

NOTE: The above description of the Tract nominated for lease has been provided and corrected, where required, exclusively by the nomination party. Any mineral lease selected from this Tract and awarded by the Louisiana State Mineral Board shall be without warranty of any kind, either express, implied, or statutory, including, but not limited to, the implied warranties of merchantability and fitness for a particular purpose. Should the mineral lease awarded by the Louisiana State Mineral Board be subsequently modified, cancelled or abrogated due to the existence of conflicting leases, operating agreements, private claims or other future obligations or conditions which may affect all or any portion of the leased Tract, it shall not relieve the Lessee of the obligation to pay any bonus due thereon to the Louisiana State Mineral Board, nor shall the Louisiana State Mineral Board be obligated to refund any consideration paid by the Lessor prior to such modification, cancellation, or abrogation, including, but not limited to, bonuses, rentals and royalties.

Applicant: THEOPHILUS OIL, GAS & LAND SERVICES, LLC

Bidder	Cash Payment	Price/ Acre	Rental	Oil	Gas	Other



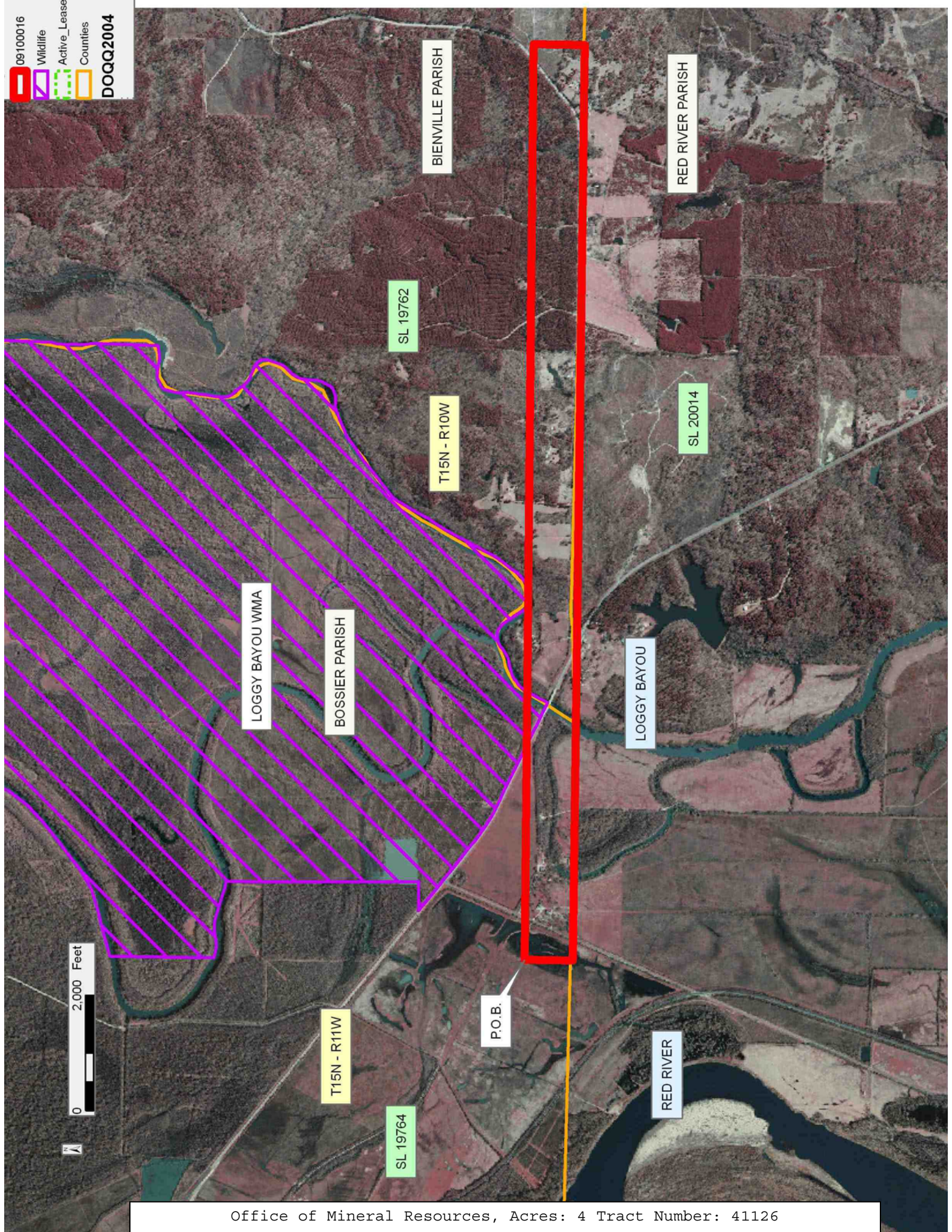
TRACT 41126 - Bienville Bossier and Red River Parishes, Louisiana

All of the lands now or formerly constituting the beds and bottoms of all water bodies of every nature and description as to which title is vested in the State of Louisiana, together with all islands arising therein and other lands formed by accretion or by reliction, where allowed by law, excepting tax adjudicated lands, and not presently under mineral lease on October 14, 2009, situated in Bienville Bossier and Red River Parishes, Louisiana, and more particularly described as follows: Beginning at the Northeast corner of State Lease No. 19765, also being the Southeast corner of State Lease No. 19764 and the Southwest corner of State Lease No. 19762 having Coordinates of X = 1,708,957.21 and Y = 572,800.00; thence East 15,842.79 feet along the South boundary of said State Lease No. 19762 to a point having Coordinates of X = 1,724,800.00 and Y = 572,800.00; thence South 885.72 feet to the Northeast corner of State Lease No. 20014 having Coordinates of X = 1,724,800.00 and Y = 571,914.28; thence North 89 degrees 48 minutes 54 seconds West 15,842.87 feet along the North boundary of said State Lease No. 20014 to its Northwest corner located on the East boundary of said State Lease No. 19765 having Coordinates of X = 1,708,957.21 and Y = 571,965.45; thence North 834.55 feet along the East boundary of said State Lease No. 19765 to the point of beginning, **LESS AND EXCEPT** any portion of the Loggy Bayou Wildlife Management Area that may lie within the above described tract, (This tract includes only waterbottoms claimed and owned by the state and specifically excludes any land which the state or Wildlife and Fisheries may claim or own and to which the mineral rights are vested in them), containing approximately **4 acres**, all as more particularly outlined on a plat on file in the Office of Mineral Resources, Department of Natural Resources. All bearings, distances and coordinates are based on Louisiana Coordinate System of 1927, (North or South Zone), where applicable.

NOTE: The above description of the Tract nominated for lease has been provided and corrected, where required, exclusively by the nomination party. Any mineral lease selected from this Tract and awarded by the Louisiana State Mineral Board shall be without warranty of any kind, either express, implied, or statutory, including, but not limited to, the implied warranties of merchantability and fitness for a particular purpose. Should the mineral lease awarded by the Louisiana State Mineral Board be subsequently modified, cancelled or abrogated due to the existence of conflicting leases, operating agreements, private claims or other future obligations or conditions which may affect all or any portion of the leased Tract, it shall not relieve the Lessee of the obligation to pay any bonus due thereon to the Louisiana State Mineral Board, nor shall the Louisiana State Mineral Board be obligated to refund any consideration paid by the Lessor prior to such modification, cancellation, or abrogation, including, but not limited to, bonuses, rentals and royalties.

Applicant: THEOPHILUS OIL, GAS & LAND SERVICES, LLC

Bidder	Cash Payment	Price/ Acre	Rental	Oil	Gas	Other



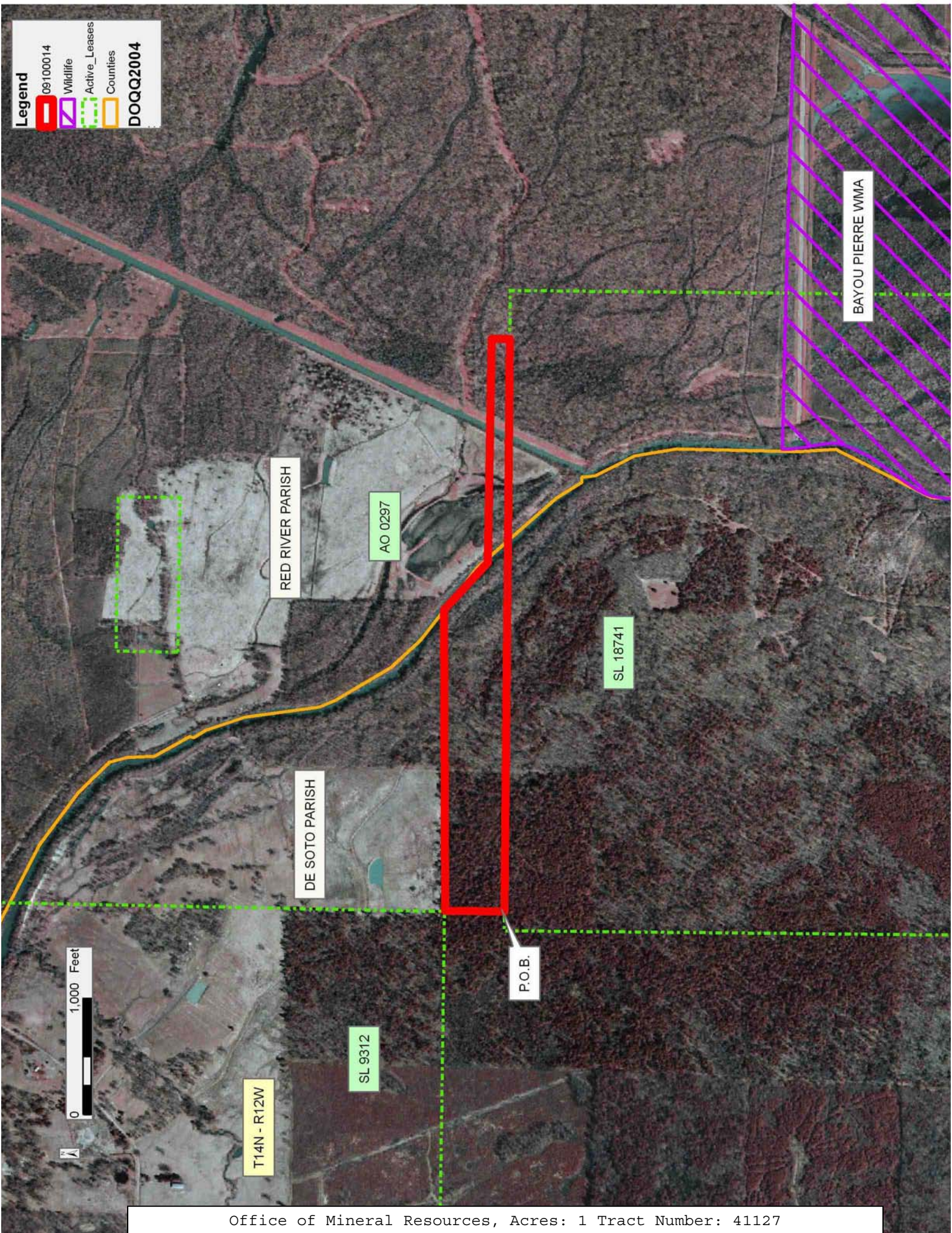
TRACT 41127 - De Soto and Red River Parishes, Louisiana

All of the lands now or formerly constituting the beds and bottoms of all water bodies of every nature and description as to which title is vested in the State of Louisiana, together with all islands arising therein and other lands formed by accretion or by reliction, where allowed by law, excepting tax adjudicated lands, and not presently under mineral lease on October 14, 2009, situated in De Soto and Red River Parishes, Louisiana, and more particularly described as follows: Beginning at a point on the North boundary of State Lease No. 18741 having Coordinates of X = 1,656,764.31 and Y = 567,600.00; thence Northerly approximately 510 feet to the Southwest corner of Operating Agreement AO 0297; thence Easterly, Southeasterly and Easterly along the South boundary of said Operating Agreement AO 0297 to its Southeast corner; thence Southerly approximately 156 feet to a point on the North boundary of said State Lease No. 18741 having Coordinates of X = 1,661,683.82 and Y = 567,600.00; thence West 4,919.51 feet along the North boundary of said State Lease No. 18741 to the point of beginning, **LESS AND EXCEPT** any portion of State Lease No. 9312, as amended that may lie within the above described tract, containing approximately **1 acre**, all as more particularly outlined on a plat on file in the Office of Mineral Resources, Department of Natural Resources. All bearings, distances and coordinates are based on Louisiana Coordinate System of 1927, (North or South Zone), where applicable.

NOTE: The above description of the Tract nominated for lease has been provided and corrected, where required, exclusively by the nomination party. Any mineral lease selected from this Tract and awarded by the Louisiana State Mineral Board shall be without warranty of any kind, either express, implied, or statutory, including, but not limited to, the implied warranties of merchantability and fitness for a particular purpose. Should the mineral lease awarded by the Louisiana State Mineral Board be subsequently modified, cancelled or abrogated due to the existence of conflicting leases, operating agreements, private claims or other future obligations or conditions which may affect all or any portion of the leased Tract, it shall not relieve the Lessee of the obligation to pay any bonus due thereon to the Louisiana State Mineral Board, nor shall the Louisiana State Mineral Board be obligated to refund any consideration paid by the Lessor prior to such modification, cancellation, or abrogation, including, but not limited to, bonuses, rentals and royalties.

Applicant: THEOPHILUS OIL, GAS & LAND SERVICES, LLC

Bidder	Cash Payment	Price/ Acre	Rental	Oil	Gas	Other



TRACT 41128 - Red River Parish, Louisiana

All of the lands now or formerly constituting the beds and bottoms of all water bodies of every nature and description as to which title is vested in the State of Louisiana, together with all islands arising therein and other lands formed by accretion or by reliction, where allowed by law, excepting tax adjudicated lands, and not presently under mineral lease on October 14, 2009, situated in Red River Parish, Louisiana, and more particularly described as follows: Beginning at the Northeast corner of State Lease No. 18606 located on the South boundary of State Lease No. 20038 having Coordinates of X = 1,719,190.00 and Y = 529,555.00; thence East 5,610.00 feet along the South boundary of said State Lease No. 20038 to its Southeast corner having Coordinates of X = 1,724,800.00 and Y = 529,555.00; thence South 4,245.00 feet to a point on the North boundary of State Lease No. 20039 having Coordinates of X = 1,724,800.00 and Y = 525,310.00; thence West 5,610.00 feet along the North boundary of said State Lease No. 20039 to its Northwest corner located on the East boundary of said State Lease No. 18606 having Coordinates of X = 1,719,190.00 and Y = 525,310.00; thence North 4,245.00 feet along the East boundary of said State Lease No. 18606 to the point of beginning, containing approximately **8 acres**, all as more particularly outlined on a plat on file in the Office of Mineral Resources, Department of Natural Resources. All bearings, distances and coordinates are based on Louisiana Coordinate System of 1927, (North or South Zone), where applicable.

NOTE: The above description of the Tract nominated for lease has been provided and corrected, where required, exclusively by the nomination party. Any mineral lease selected from this Tract and awarded by the Louisiana State Mineral Board shall be without warranty of any kind, either express, implied, or statutory, including, but not limited to, the implied warranties of merchantability and fitness for a particular purpose. Should the mineral lease awarded by the Louisiana State Mineral Board be subsequently modified, cancelled or abrogated due to the existence of conflicting leases, operating agreements, private claims or other future obligations or conditions which may affect all or any portion of the leased Tract, it shall not relieve the Lessee of the obligation to pay any bonus due thereon to the Louisiana State Mineral Board, nor shall the Louisiana State Mineral Board be obligated to refund any consideration paid by the Lessor prior to such modification, cancellation, or abrogation, including, but not limited to, bonuses, rentals and royalties.

Applicant: THEOPHILUS OIL, GAS & LAND SERVICES, LLC

Bidder	Cash Payment	Price/ Acre	Rental	Oil	Gas	Other

Legend
09100011
Active_Leases
DOQQ2004

RED RIVER PARISH

SL 20038

SL 20039

T13N - R10W

P.O.B.

SL 18606

COUSHATTA BAYOU



TRACT 41129 - De Soto and Red River Parishes, Louisiana

All of the lands now or formerly constituting the beds and bottoms of all water bodies of every nature and description as to which title is vested in the State of Louisiana, together with all islands arising therein and other lands formed by accretion or by reliction, where allowed by law, excepting tax adjudicated lands, and not presently under mineral lease on October 14, 2009, situated in De Soto and Red River Parishes, Louisiana, and more particularly described as follows: Beginning at a corner located on a Southern boundary of State Lease No. 19350 having Coordinates of X = 1,684,760.00 and Y = 516,172.00; thence East 2,640.00 feet along the South boundary of said State Lease No. 19350 to its most Northerly Southeast corner, also being the Southwest corner of State Lease No. 19351 having Coordinates of X = 1,687,400.00 and Y = 516,172.00; thence East 2,800.00 feet along the South boundary of said State Lease No. 19351 to a point having Coordinates of X = 1,690,200.00 and Y = 516,172.00; thence Southerly approximately 1,476 feet to the Northeast corner of State Lease No. 18372, as amended; thence Westerly approximately 5,236 feet along the North boundary of said State Lease No. 18372 to its Northwest corner; thence Westerly approximately 204 feet to a point on the East boundary of said State Lease No. 19350 having Coordinates of X = 1,684,760.00 and Y = 514,676.00; thence North 1,496.00 feet along the East boundary of said State Lease No. 19350 to the point of beginning, containing approximately **4 acres**, all as more particularly outlined on a plat on file in the Office of Mineral Resources, Department of Natural Resources. All bearings, distances and coordinates are based on Louisiana Coordinate System of 1927, (North or South Zone), where applicable.

NOTE: The above description of the Tract nominated for lease has been provided and corrected, where required, exclusively by the nomination party. Any mineral lease selected from this Tract and awarded by the Louisiana State Mineral Board shall be without warranty of any kind, either express, implied, or statutory, including, but not limited to, the implied warranties of merchantability and fitness for a particular purpose. Should the mineral lease awarded by the Louisiana State Mineral Board be subsequently modified, cancelled or abrogated due to the existence of conflicting leases, operating agreements, private claims or other future obligations or conditions which may affect all or any portion of the leased Tract, it shall not relieve the Lessee of the obligation to pay any bonus due thereon to the Louisiana State Mineral Board, nor shall the Louisiana State Mineral Board be obligated to refund any consideration paid by the Lessor prior to such modification, cancellation, or abrogation, including, but not limited to, bonuses, rentals and royalties.

Applicant: THEOPHILUS OIL, GAS & LAND SERVICES, LLC

Bidder	Cash Payment	Price/ Acre	Rental	Oil	Gas	Other

Legend

- 09100012
- Active_Leases
- Counties
- DOQQ2004

