

**TRACT 40320 - Lafourche Parish, Louisiana**

All of the lands now or formerly constituting the beds and bottoms of all water bodies of every nature and description as to which title is vested in the State of Louisiana, together with all islands arising therein and other lands formed by accretion or by reliction, where allowed by law, excepting tax adjudicated lands, and not presently under mineral lease on October 8, 2008, situated in Lafourche Parish, Louisiana, and more particularly described as follows: Beginning at the Southwest corner of State Lease No. 19704 having Coordinates of X = 2,302,118.26 and Y = 270,115.59; thence North 88 degrees 34 minutes 10 seconds East 8,109.63 feet along the Southern boundary of said State Lease No. 19704 to its Southeast corner having Coordinates of X = 2,310,225.36 and Y = 270,318.04; thence North 01 degrees 05 minutes 44 seconds West 5,325.37 feet along the Eastern boundary of said State Lease No. 19704 to its Easternmost Northeast corner, said corner also being a point on the Western boundary of State Lease No. 19531 having Coordinates of X = 2,310,123.55 and Y = 275,642.44; thence along the said Western boundary of State Lease No. 19531 the following courses: South 35 degrees 30 minutes 54 seconds East 3,164.95 feet to a point having Coordinates of X = 2,311,962.12 and Y = 273,066.29, South 27 degrees 28 minutes 53 seconds East 3,843.46 feet to a point having Coordinates of X = 2,313,735.73 and Y = 269,656.53, South 18 degrees 56 minutes 58 seconds East 141.59 feet to a point having Coordinates of X = 2,313,781.71 and Y = 269,522.61; thence South 88 degrees 35 minutes 42 seconds West 17,067.62 feet to a point having Coordinates of X = 2,296,719.22 and Y = 269,104.12; thence North 01 degrees 03 minutes 50 seconds West approximately 10,794 feet to a point on the boundary of Pointe Aux Chenes State Wildlife Management Area; thence Easterly, along the said boundary of Pointe Aux Chenes State Wildlife Management Area to the northwest corner of said State Lease No. 19704 being a point of intersection with a line that bears North 01 degrees 25 minutes 11 seconds West from the said Southwest corner of State Lease No. 19704 having Coordinates of having Coordinates of X = 2,302,118.26 and Y = 270,115.59; thence South 01 degrees 25 minutes 11 seconds East approximately 9,916 feet to the point of beginning, **LESS AND EXCEPT** that portion of Bayou Blue, that lies within the Textularia Sand, Reservoir L, Bully Camp Field, being defined herein as the oil and gas bearing Sand encountered between the depth of 11,529 feet and 11,709 feet (induction-electric log measurement) in the Exxon Fee B-1 Well located in Section 54, Township 19 South, Range 21 East, Lafourche Parish, Louisiana, and the TP-5 Sand, Reservoir J, Bully Camp Field, being defined herein as the oil and gas bearing Sand encountered between the depth of 10,156 feet and 10,178 feet (induction-electric log measurement) in the Exxon Benquin Corporation Well No. 1 Well located in Section 55, Township 18 South, Range 21 East, Lafourche Parish, Louisiana and **LESS AND EXCEPT** that portion, if any, that lies within the Pointe Aux Chenes State Wildlife Management Area, containing **167 acres**, all as more particularly outlined on a plat on file in the Office of Mineral Resources, Department of Natural Resources. All bearings, distances and coordinates are based on Louisiana Coordinate System of 1927, (North or South Zone), where applicable.

NOTE: The above description of the Tract nominated for lease has been provided and corrected, where required, exclusively by the nomination party. Any mineral lease selected from this Tract and awarded by the Louisiana State Mineral Board shall be without warranty of any kind, either express, implied, or statutory, including, but not limited to, the implied warranties of merchantability and fitness for a particular purpose. Should the mineral lease awarded by the Louisiana State Mineral Board be subsequently modified, cancelled or abrogated due to the existence of conflicting leases, operating agreements, private claims or other future obligations or conditions which may affect all or any portion of the leased Tract, it shall not relieve the Lessee of the obligation to pay any bonus due thereon to the Louisiana State Mineral Board, nor shall the Louisiana State Mineral Board be obligated to refund any consideration paid by the Lessor prior to such modification, cancellation, or abrogation, including, but not limited to, bonuses, rentals and royalties.

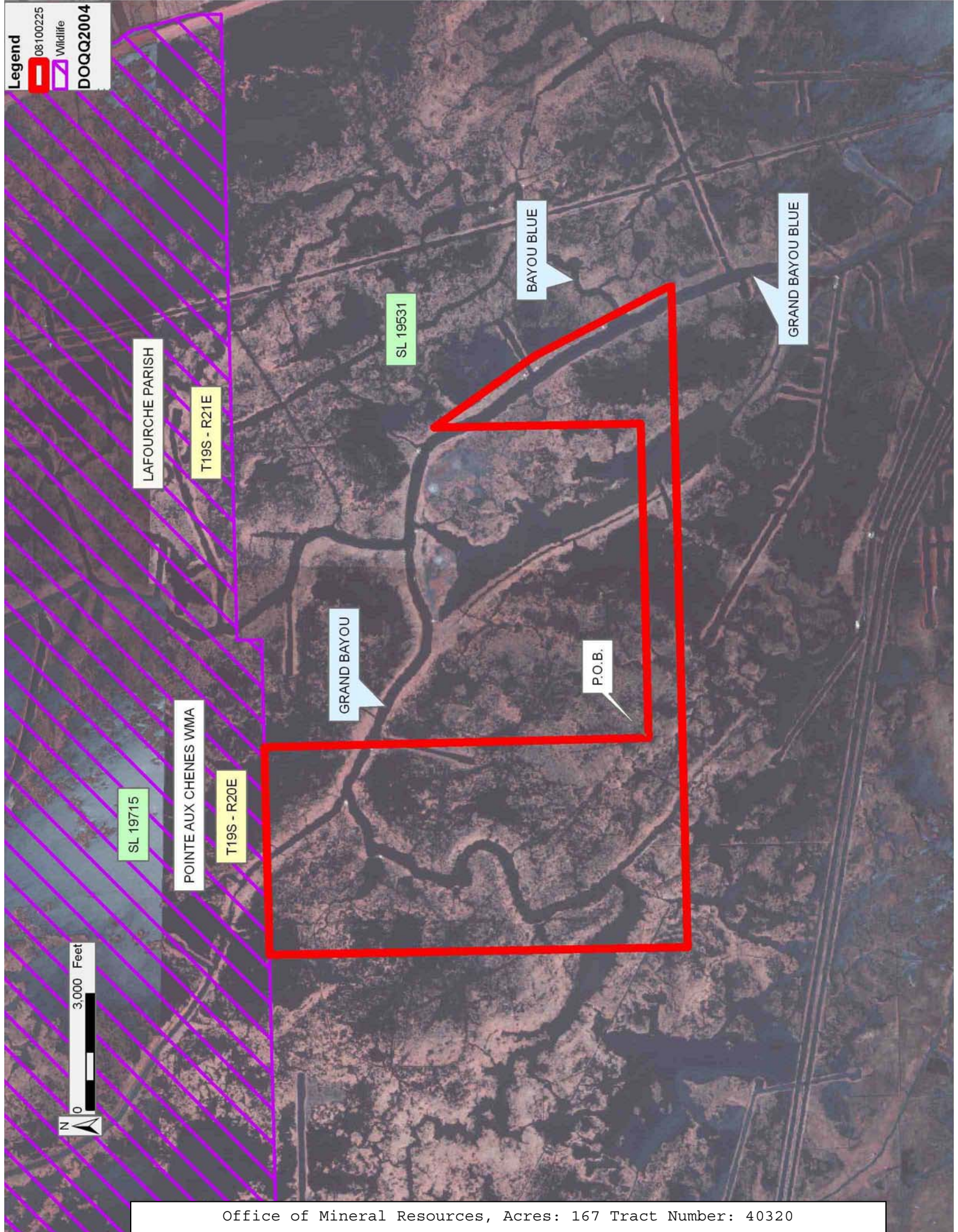
NOTE: The State of Louisiana does hereby reserve, and this lease shall be subject to, the imprescriptible right of surface use in the nature of a servitude in favor of the Department of Natural Resources, including its Offices and Commissions, for the sole purpose of implementing, constructing, servicing and maintaining approved coastal zone management and/or restoration projects. Utilization of any and all rights derived under this lease by the mineral lessee, its agents, successors or assigns, shall not interfere with nor hinder the reasonable surface use by the Department of Natural Resources, its Offices or Commissions, as herein above reserved.

Applicant: STARKS OIL CORPORATION

Bidder	Cash Payment	Price/Acre	Rental	Oil	Gas	Other

**Legend**

- 08100225
- Wildlife
- DOQQ2004



**TRACT 40321 - Lafourche and Terrebonne Parishes, Louisiana**

All of the lands now or formerly constituting the beds and bottoms of all water bodies of every nature and description as to which title is vested in the State of Louisiana, together with all islands arising therein and other lands formed by accretion or by reliction, where allowed by law, excepting tax adjudicated lands, and not presently under mineral lease on October 8, 2008, situated in Lafourche and Terrebonne Parishes, Louisiana, and more particularly described as follows: Beginning at a Point having Coordinates of X = 2,279,063.59 and Y = 266,097.00; thence North 4,591.15 feet to the Southeast corner of State Lease No. 18223, as amended, having Coordinates of X = 2,279,063.59 and Y = 270,688.15; thence North 3,378.58 feet along the East boundary of said State Lease No. 18223, as amended, to its Northeast corner, said corner also being the Southernmost Southwest corner of State Lease No. 19705 having Coordinates of X = 2,279,063.59 and Y = 274,066.73; thence along the boundary of said State Lease No. 19705 the following courses: North 88 degrees 34 minutes 18 seconds East 4,259.50 feet to its Southernmost Southeast corner having Coordinates of X = 2,283,321.77 and Y = 274,172.91, thence North 00 degrees 29 minutes 10 seconds East 2,698.73 feet to its Northernmost Southwest corner having Coordinates of X = 2,283,344.67 and Y = 276,871.54, thence North 88 degrees 35 minutes 21 seconds East 5,213.28 feet to its Northernmost Southeast corner having Coordinates of X = 2,288,556.37 and Y = 276,999.89, thence North 01 degrees 29 minutes 33 seconds West approximately 2,697 feet to its Northeast corner, said corner also being a point on the of Pointe Aux Chenes State Wildlife Management Area; thence Easterly, to a point that intersects a line bearing North 01 degrees 03 minutes 50 seconds West from a point having Coordinates of X = 2,296,769.05 and Y = 266,421.14; thence South 01 degrees 03 minutes 50 seconds East approximately 13,478 feet to a point having Coordinates of X = 2,296,769.05 and Y = 266,421.14; thence South 88 degrees 57 minutes 04 seconds West 17,708.43 feet to the point of beginning, **LESS AND EXCEPT** that portion, if any, that lies within the Pointe Aux Chenes State Wildlife Management Area, containing approximately **118 acres**, all as more particularly outlined on a plat on file in the Office of Mineral Resources, Department of Natural Resources. All bearings, distances and coordinates are based on Louisiana Coordinate System of 1927, (North or South Zone), where applicable.

NOTE: The above description of the Tract nominated for lease has been provided and corrected, where required, exclusively by the nomination party. Any mineral lease selected from this Tract and awarded by the Louisiana State Mineral Board shall be without warranty of any kind, either express, implied, or statutory, including, but not limited to, the implied warranties of merchantability and fitness for a particular purpose. Should the mineral lease awarded by the Louisiana State Mineral Board be subsequently modified, cancelled or abrogated due to the existence of conflicting leases, operating agreements, private claims or other future obligations or conditions which may affect all or any portion of the leased Tract, it shall not relieve the Lessee of the obligation to

pay any bonus due thereon to the Louisiana State Mineral Board, nor shall the Louisiana State Mineral Board be obligated to refund any consideration paid by the Lessor prior to such modification, cancellation, or abrogation, including, but not limited to, bonuses, rentals and royalties.

NOTE: The State of Louisiana does hereby reserve, and this lease shall be subject to, the imprescriptible right of surface use in the nature of a servitude in favor of the Department of Natural Resources, including its Offices and Commissions, for the sole purpose of implementing, constructing, servicing and maintaining approved coastal zone management and/or restoration projects. Utilization of any and all rights derived under this lease by the mineral lessee, its agents, successors or assigns, shall not interfere with nor hinder the reasonable surface use by the Department of Natural Resources, its Offices or Commissions, as herein above reserved.

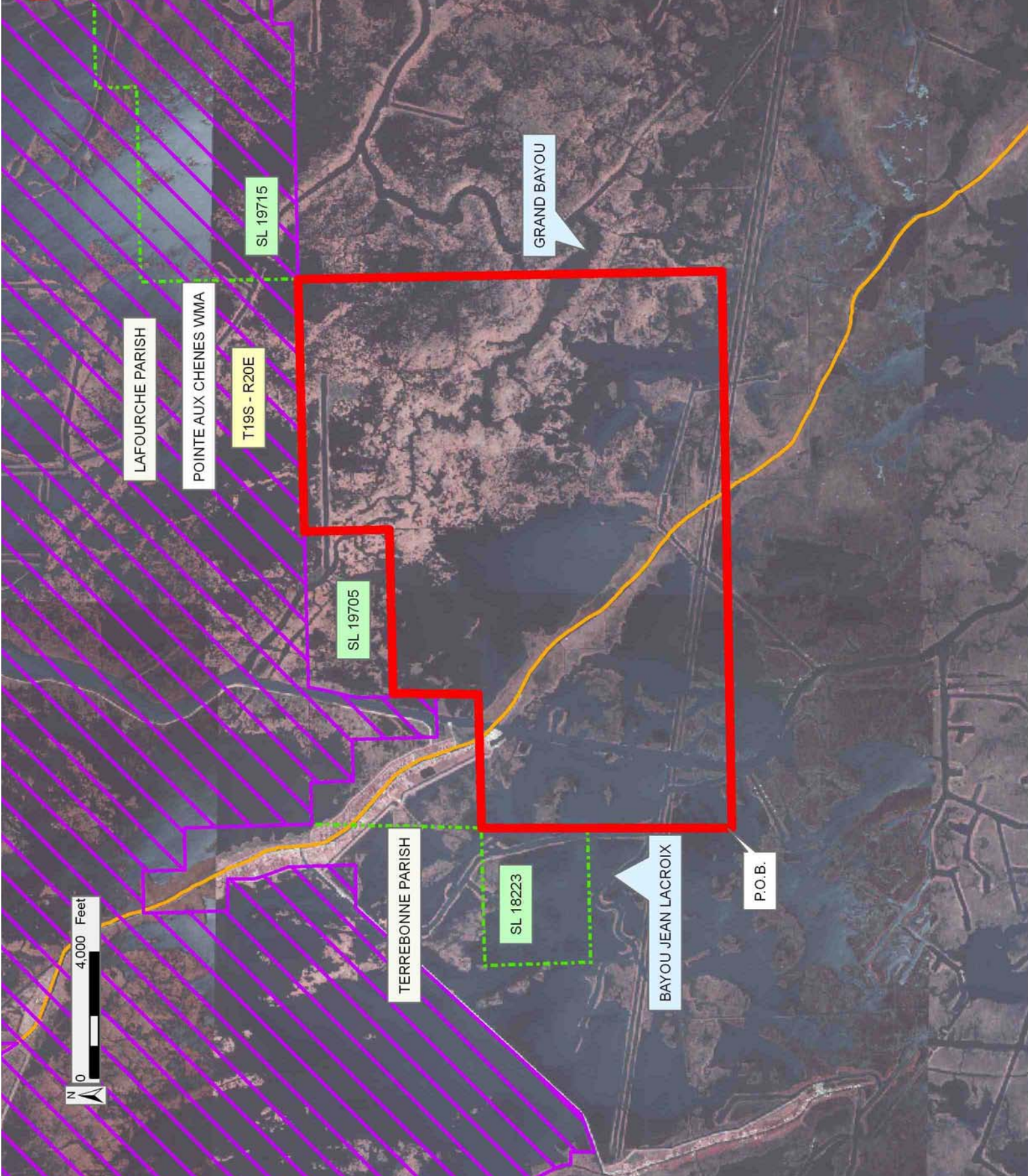
Applicant: STARKS OIL CORPORATION

Bidder	Cash Payment	Price/Acre	Rental	Oil	Gas	Other

**Legend**

-  08100226
-  Wildlife
-  Active\_Leases
-  Counties

**DOQQ2004**



**TRACT 40322 - Terrebonne Parish, Louisiana**

All of the lands now or formerly constituting the beds and bottoms of all water bodies of every nature and description as to which title is vested in the State of Louisiana, together with all islands arising therein and other lands formed by accretion or by reliction, where allowed by law, excepting tax adjudicated lands, and not presently under mineral lease on October 8, 2008, situated in Terrebonne Parish, Louisiana, and more particularly described as follows: Beginning at a Point having Coordinates of X = 2,279,063.59 and Y = 266,097.00; thence South 88 degrees 57 minutes 04 seconds West 17,000.08 feet to a point having Coordinates of X = 2,262,066.36 and Y = 265,785.82; thence North 01 degrees 25 minutes 34 seconds West approximately 13,300 feet to a point on the boundary of Pointe Aux Chenes State Wildlife Management Area; thence Easterly, Southeasterly, Easterly, Southerly, Northeasterly, and Easterly, along the said boundary of Pointe Aux Chenes State Wildlife Management Area, to a point on the Western boundary of State Lease No. 19703 that bear North 01 degrees 44 minutes 15 seconds West from the Southwest corner of said State Lease No. 19703 having Coordinates X = 2,278,013.55 and Y = 274,040.55; thence South 01 degrees 44 minutes 15 seconds East approximately 4,039 feet along the said Western boundary of State Lease No. 19703 to its said Southwest corner, said corner also being a point on the Northern boundary of State Lease No. 18223 having Coordinates of X = 2,278,013.55 and Y = 274,040.55; thence South 88 degrees 34 minutes 18 seconds West 3,323.28 feet along the Northern boundary of said State Lease No. 18223 to its Northwest corner having Coordinates of X = 2,274,691.30 and Y = 273,957.71; thence South 01 degrees 49 minutes 13 seconds East 3,374.49 feet along the Western boundary of said State Lease No. 18223 to its Southwest corner having Coordinates of X = 2,274,798.49 and Y = 270,584.92; thence North 88 degrees 36 minutes 49 seconds East 4,266.35 feet along the Southern boundary of said State Lease No. 18223 to its Southeast corner having Coordinates of X = 2,279,063.59 and Y = 270,688.15; thence South 4,591.15 feet to the point of beginning, **LESS AND EXCEPT** that portion, if any, that lies within the Pointe Aux Chenes State Wildlife Management Area, containing approximately **37 acres**, all as more particularly outlined on a plat on file in the Office of Mineral Resources, Department of Natural Resources. All bearings, distances and coordinates are based on Louisiana Coordinate System of 1927, (North or South Zone), where applicable.

NOTE: The above description of the Tract nominated for lease has been provided and corrected, where required, exclusively by the nomination party. Any mineral lease selected from this Tract and awarded by the Louisiana State Mineral Board shall be without warranty of any kind, either express, implied, or statutory, including, but not limited to, the implied warranties of merchantability and fitness for a particular purpose. Should the mineral lease awarded by the Louisiana State Mineral Board be subsequently modified, cancelled or abrogated due to the existence of conflicting leases, operating agreements, private claims or other future obligations or conditions which may affect all or any portion

of the leased Tract, it shall not relieve the Lessee of the obligation to pay any bonus due thereon to the Louisiana State Mineral Board, nor shall the Louisiana State Mineral Board be obligated to refund any consideration paid by the Lessor prior to such modification, cancellation, or abrogation, including, but not limited to, bonuses, rentals and royalties.




NOTE: The State of Louisiana does hereby reserve, and this lease shall be subject to, the imprescriptible right of surface use in the nature of a servitude in favor of the Department of Natural Resources, including its Offices and Commissions, for the sole purpose of implementing, constructing, servicing and maintaining approved coastal zone management and/or restoration projects. Utilization of any and all rights derived under this lease by the mineral lessee, its agents, successors or assigns, shall not interfere with nor hinder the reasonable surface use by the Department of Natural Resources, its Offices or Commissions, as herein above reserved.

Applicant: STARKS OIL CORPORATION

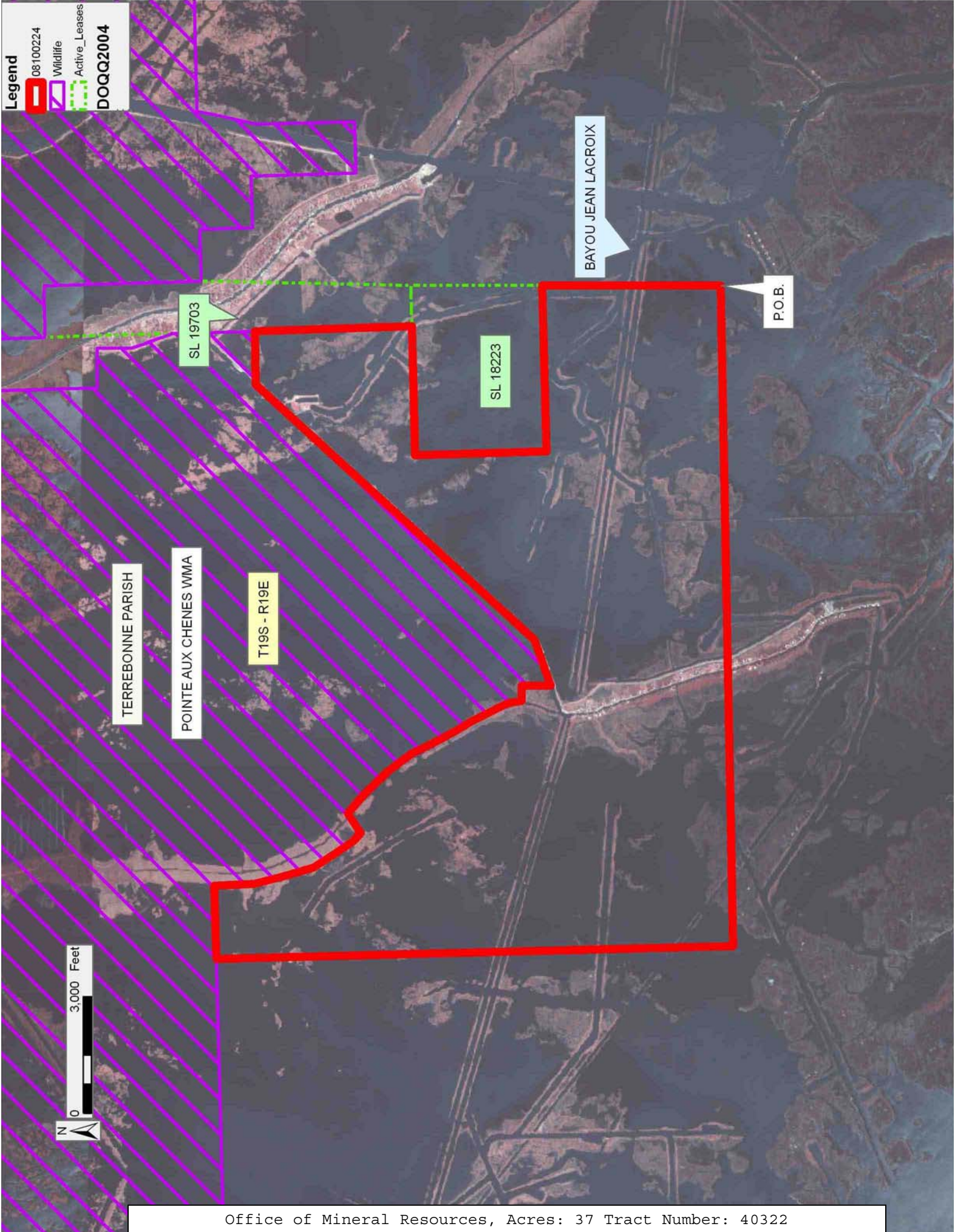
Bidder	Cash Payment	Price/Acre	Rental	Oil	Gas	Other



**Legend**

-  08100224
-  Wildlife
-  Active\_Leases

**DOQQ2004**



TERREBONNE PARISH

POINTE AUX CHENES WMA

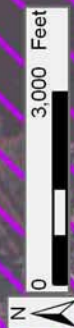
T19S - R19E

SL 19703

SL 18223

BAYOU JEAN LACROIX

P.O.B.



**TRACT 40323 - Portion of Block 46, Main Pass Area, Revised, Plaquemines Parish, Louisiana**

All of the lands now or formerly constituting the beds and bottoms of all water bodies of every nature and description as to which title is vested in the State of Louisiana, together with all islands arising therein and other lands formed by accretion or by reliction, where allowed by law, excepting tax adjudicated lands, and not presently under mineral lease on October 8, 2008, situated in Plaquemines Parish, Louisiana, and more particularly described as follows: Beginning at a point on the West line of Block 46, Main Pass Area, Revised, having Coordinates of X = 2,664,850.00 and Y = 271,800.00; thence East 4,950.00 feet to the Southwest corner of State Lease No. 19474 having Coordinates of X = 2,669,800.00 and Y = 271,800.00; thence North 89 degrees 56 minutes 33 seconds East 1,194.00 feet along its Southern boundary to a point common with State Lease No. 19083 having Coordinates of X = 2,670,994.00 and Y = 271,801.20; thence South 04 degrees 52 minutes 09 seconds West 4,343.66 feet along the Western boundary of said State Lease No. 19083 to the Westernmost corner of the Southern portion of State Lease No. 2726 as amended, having Coordinates of X = 2,670,625.30 and Y = 267,473.22; thence along the boundary of said State Lease No. 2726 the following courses: North 81 degrees 58 minutes 03 seconds East 788.00 feet; South 89 degrees 59 minutes 57 seconds East 370.00 feet; South 81 degrees 01 minutes 57 seconds East 385.00 feet; South 63 degrees 25 minutes 58 seconds East 380.00 feet; South 45 degrees 10 minutes 59 seconds East 513.01 feet and South 37 degrees 47 minutes 32 seconds East 583.39 feet to the Northernmost Northeast corner of State Lease No. 16663, as amended, having Coordinates of X = 2,673,217.15 and Y = 266,530.75; thence South 74 degrees 56 minutes 32 seconds West 1,027.43 feet along the Northern boundary of said State Lease No. 16663 to its Northwest corner, also being the Northeast corner of State Lease No. 16662, as amended, having Coordinates of X = 2,672,225.00 and Y = 266,263.83; thence South 74 degrees 56 minutes 32 seconds West 2,398.50 feet along the Northern boundary of said State Lease No. 16662 to the Easternmost Southeast corner of State Lease No. 19082 having Coordinates of X = 2,669,908.85 and Y = 265,640.72; thence along the boundary of said State Lease No. 19082 the following courses: North 04 degrees 49 minutes 45 seconds West 1,292.97 feet; North 46 degrees 52 minutes 13 seconds West 2,136.18 feet; South 64 degrees 00 minutes 34 seconds West 2,126.84 feet; South 19 degrees 10 minutes 26 seconds East 1,734.70 feet; South 02 degrees 41 minutes 49 seconds West 2,167.70 feet and North 75 degrees 34 minutes 59 seconds East 1,892.04 feet to its Southernmost Southeast corner, also being a point on the Western boundary of said State Lease No. 16661 having Coordinates of X = 2,668,629.46 and Y = 264,124.77; thence South 15 degrees 03 minutes 29 seconds East 823.03 feet along the Western boundary of said State Lease No. 16661 to its Southwest corner, also being a point on the South line of said Block 46 having Coordinates of X = 2,668,843.28 and Y = 263,330.00; thence West 3,993.28 feet along the South line of said Block 46 to its Southwest corner having Coordinates of X = 2,664,850.00 and Y = 263,330.00; thence North 8,470.00 feet along the West line of said Block

46 to the point of beginning, containing approximately **874.05 acres**, all as more particularly outlined on a plat on file in the Office of Mineral Resources, Department of Natural Resources. All bearings, distances and coordinates are based on Louisiana Coordinate System of 1927, (North or South Zone), where applicable.

NOTE: The above description of the Tract nominated for lease has been provided and corrected, where required, exclusively by the nomination party. Any mineral lease selected from this Tract and awarded by the Louisiana State Mineral Board shall be without warranty of any kind, either express, implied, or statutory, including, but not limited to, the implied warranties of merchantability and fitness for a particular purpose. Should the mineral lease awarded by the Louisiana State Mineral Board be subsequently modified, cancelled or abrogated due to the existence of conflicting leases, operating agreements, private claims or other future obligations or conditions which may affect all or any portion of the leased Tract, it shall not relieve the Lessee of the obligation to pay any bonus due thereon to the Louisiana State Mineral Board, nor shall the Louisiana State Mineral Board be obligated to refund any consideration paid by the Lessor prior to such modification, cancellation, or abrogation, including, but not limited to, bonuses, rentals and royalties.

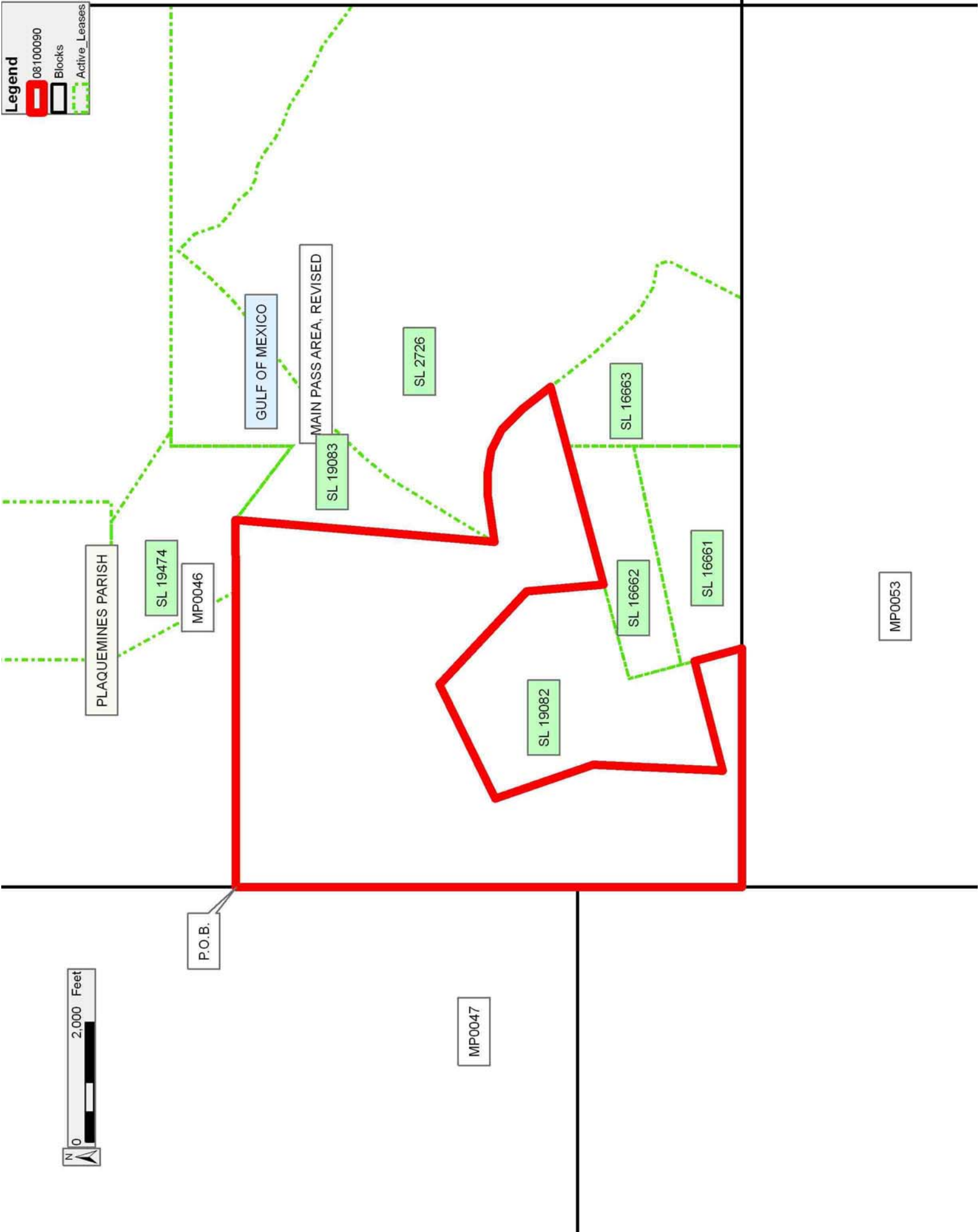
NOTE: The State of Louisiana does hereby reserve, and this lease shall be subject to, the imprescriptible right of surface use in the nature of a servitude in favor of the Department of Natural Resources, including its Offices and Commissions, for the sole purpose of implementing, constructing, servicing and maintaining approved coastal zone management and/or restoration projects. Utilization of any and all rights derived under this lease by the mineral lessee, its agents, successors or assigns, shall not interfere with nor hinder the reasonable surface use by the Department of Natural Resources, its Offices or Commissions, as herein above reserved.

Applicant: HAROLD J. ANDERSON, INC.

Bidder	Cash Payment	Price/Acre	Rental	Oil	Gas	Other

**Legend**

- 08100090
- Blocks
- Active\_Leases



**TRACT 40324 - Terrebonne Parish, Louisiana**

All of the lands now or formerly constituting the beds and bottoms of all water bodies of every nature and description as to which title is vested in the State of Louisiana, together with all islands arising therein and other lands formed by accretion or by reliction, where allowed by law, excepting tax adjudicated lands, and not presently under mineral lease on October 8, 2008, situated in Terrebonne Parish, Louisiana, and more particularly described as follows: Beginning at a point having Coordinates of X = 2,236,752.65 and Y = 261,596.35; thence East approximately 7,230 feet to a point on the Western boundary of State Lease No. 328, as amended, having a Coordinate of Y = 261,596.35; thence Southerly, Easterly and Southeasterly along the Western boundary of said State Lease No. 328 to a point of intersection with the North boundary of the Compromise Agreement recorded under entry No. 922922 in the records of Terrebonne Parish; thence South 88 degrees 51 minutes 35 seconds West approximately 9,726 feet along the North boundary of said Compromise Agreement to its Northwest corner having Coordinates of X = 2,236,958.12 and Y = 258,419.19; thence North 03 degrees 42 minutes 01 seconds West 3,183.80 feet to the point of beginning, LESS and EXCEPT that portion, if any, of State Lease No. 328, as amended, which may lie within the above described tract, containing approximately **191 acres**, all as more particularly outlined on a plat on file in the Office of Mineral Resources, Department of Natural Resources. All bearings, distances and coordinates are based on Louisiana Coordinate System of 1927, (North or South Zone), where applicable.

NOTE: The above description of the Tract nominated for lease has been provided and corrected, where required, exclusively by the nomination party. Any mineral lease selected from this Tract and awarded by the Louisiana State Mineral Board shall be without warranty of any kind, either express, implied, or statutory, including, but not limited to, the implied warranties of merchantability and fitness for a particular purpose. Should the mineral lease awarded by the Louisiana State Mineral Board be subsequently modified, cancelled or abrogated due to the existence of conflicting leases, operating agreements, private claims or other future obligations or conditions which may affect all or any portion of the leased Tract, it shall not relieve the Lessee of the obligation to pay any bonus due thereon to the Louisiana State Mineral Board, nor shall the Louisiana State Mineral Board be obligated to refund any consideration paid by the Lessor prior to such modification, cancellation, or abrogation, including, but not limited to, bonuses, rentals and royalties.

NOTE: The State of Louisiana does hereby reserve, and this lease shall be subject to, the imprescriptible right of surface use in the nature of a servitude in favor of the Department of Natural Resources, including its Offices and Commissions, for the sole purpose of implementing, constructing, servicing and maintaining approved coastal zone management and/or restoration projects. Utilization of any and all rights derived under this lease by the mineral lessee, its agents, successors or assigns,

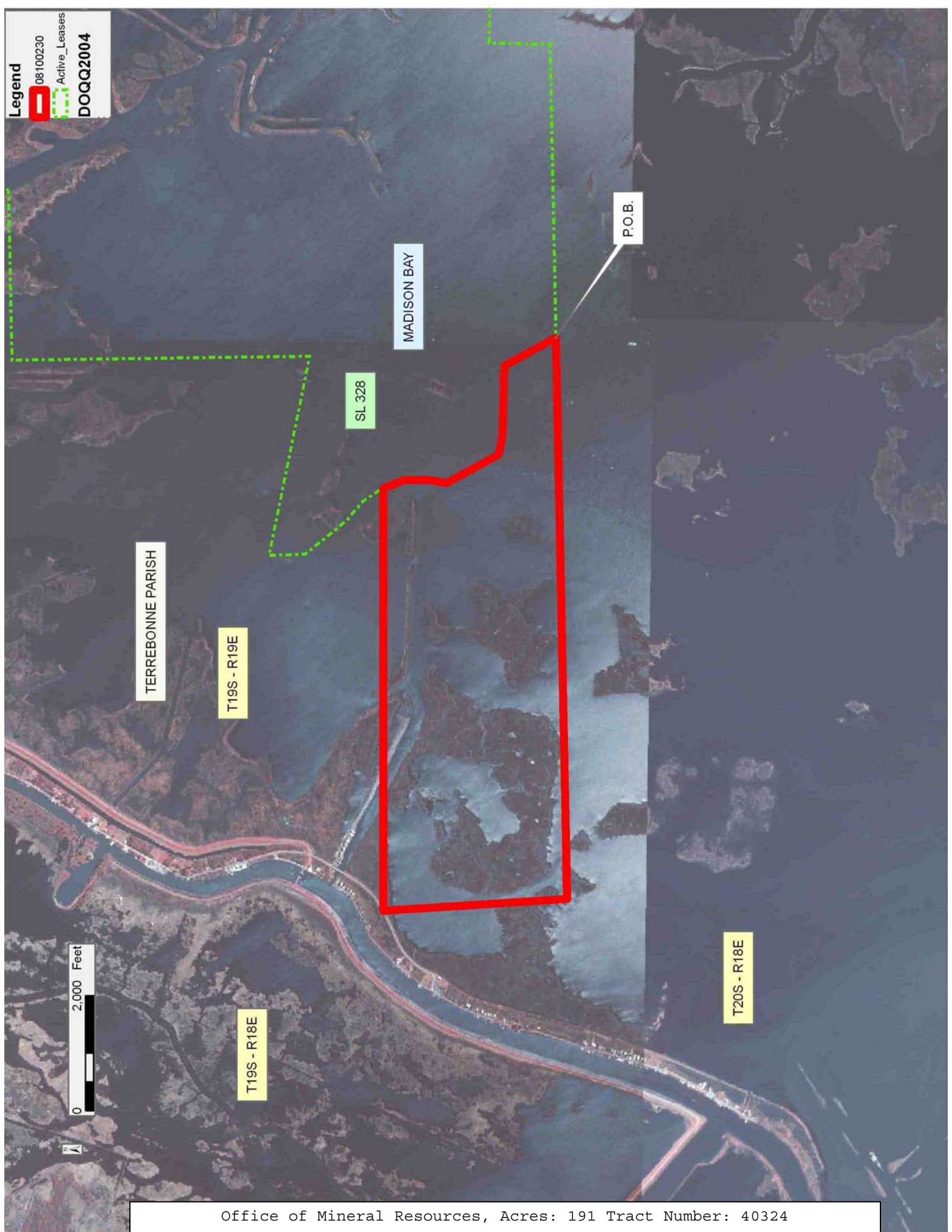
shall not interfere with nor hinder the reasonable surface use by the Department of Natural Resources, its Offices or Commissions, as herein above reserved.

NOTE: The Department of Wildlife and Fisheries has designated certain areas in the coastal waters of the State of Louisiana as Oyster Seed Bed Areas. The exact location of those Seed Bed Areas must be obtained from the Department of Wildlife and Fisheries and any work done under a mineral lease from the State of Louisiana may necessarily be conducted in conformity with the rules and regulations promulgated by the said Department of Wildlife and Fisheries for Oyster Seed Bed Areas.

Applicant: JUANITA C. CHATELAIN

Bidder	Cash Payment	Price/Acre	Rental	Oil	Gas	Other

**Legend**  
08100230  
Active\_Leases  
DOQQ2004



**TRACT 40325 - Terrebonne Parish, Louisiana**

All of the lands now or formerly constituting the beds and bottoms of all water bodies of every nature and description as to which title is vested in the State of Louisiana, together with all islands arising therein and other lands formed by accretion or by reliction, where allowed by law, excepting tax adjudicated lands, and not presently under mineral lease on October 8, 2008, situated in Terrebonne Parish, Louisiana, and more particularly described as follows: Beginning at a point having Coordinates of X = 2,237,000.00 and Y = 247,600.00; thence North 01 degrees 39 minutes 28 seconds East 3,704.64 feet to the Southwest corner of the Compromise Agreement recorded under Entry No. 922922 in the records of Terrebonne Parish having Coordinates of X = 2,237,107.18 and Y = 251,303.09; thence along the boundary of said Compromise Agreement the following courses: East 6,569.62 feet to a point having Coordinates of X = 2,243,676.80 and Y = 251,303.09; North 1,816.91 feet to a point having Coordinates of X = 2,243,676.80 and Y = 253,120.00; East 8,453.20 feet to a point having Coordinates of X = 2,252,130.00 and Y = 253,120.00; North 5,601.17 feet to a point having Coordinates of X = 2,252,130.00 and Y = 258,721.17 and South 88 degrees 51 minutes 35 seconds West approximately 373 feet to a point of intersection with the boundary of State Lease No. 328, as amended; thence along the boundary of said State Lease No. 328 the following: Northerly approximately 1,058 feet and Easterly approximately 3,224 feet to the point of intersection with a North-South line having a Coordinate of X = 2,255,000.00; thence South approximately 11,728 feet to a point having Coordinates of X = 2,255,000.00 and Y = 248,000.00; thence South 88 degrees 43 minutes 37 seconds West 18,004.44 feet to the point of beginning, **LESS AND EXCEPT** that portion, if any, of State Lease No. 328, as amended, which may lie within the above described tract, containing approximately **717 acres**, all as more particularly outlined on a plat on file in the Office of Mineral Resources, Department of Natural Resources. All bearings, distances and coordinates are based on Louisiana Coordinate System of 1927, (North or South Zone), where applicable.

NOTE: The above description of the Tract nominated for lease has been provided and corrected, where required, exclusively by the nomination party. Any mineral lease selected from this Tract and awarded by the Louisiana State Mineral Board shall be without warranty of any kind, either express, implied, or statutory, including, but not limited to, the implied warranties of merchantability and fitness for a particular purpose. Should the mineral lease awarded by the Louisiana State Mineral Board be subsequently modified, cancelled or abrogated due to the existence of conflicting leases, operating agreements, private claims or other future obligations or conditions which may affect all or any portion of the leased Tract, it shall not relieve the Lessee of the obligation to pay any bonus due thereon to the Louisiana State Mineral Board, nor shall the Louisiana State Mineral Board be obligated to refund any consideration paid by the Lessor prior to such modification, cancellation, or abrogation, including, but not limited to, bonuses, rentals and royalties.



NOTE: The State of Louisiana does hereby reserve, and this lease shall be subject to, the imprescriptible right of surface use in the nature of a servitude in favor of the Department of Natural Resources, including its Offices and Commissions, for the sole purpose of implementing, constructing, servicing and maintaining approved coastal zone management and/or restoration projects. Utilization of any and all rights derived under this lease by the mineral lessee, its agents, successors or assigns, shall not interfere with nor hinder the reasonable surface use by the Department of Natural Resources, its Offices or Commissions, as herein above reserved.

NOTE: The Department of Wildlife and Fisheries has designated certain areas in the coastal waters of the State of Louisiana as Oyster Seed Bed Areas. The exact location of those Seed Bed Areas must be obtained from the Department of Wildlife and Fisheries and any work done under a mineral lease from the State of Louisiana may necessarily be conducted in conformity with the rules and regulations promulgated by the said Department of Wildlife and Fisheries for Oyster Seed Bed Areas.

Applicant: JUANITA C. CHATELAIN

Bidder	Cash Payment	Price/Acre	Rental	Oil	Gas	Other

Legend

08100231

Active\_Leases

0 3,000 Feet



BAY BAPTISTE

P.O.B.

SL 328

TERREBONNE PARISH

BAYOU TAMBOUR

LAKE TAMBOUR

MADISON BAY

BAYOU BARRE

BAYOU DUFRENE

BAYOU DE MANGUE

T20S - R18E

**TRACT 40326 - Terrebonne Parish, Louisiana**

All of the lands now or formerly constituting the beds and bottoms of all water bodies of every nature and description as to which title is vested in the State of Louisiana, together with all islands arising therein and other lands formed by accretion or by reliction, where allowed by law, excepting tax adjudicated lands, and not presently under mineral lease on October 8, 2008, situated in Terrebonne Parish, Louisiana, and more particularly described as follows: Beginning at a point having Coordinates of X = 2,236,958.12 and Y = 258,419.19; thence North 88 degrees 51 minutes 35 seconds East 15,174.88 feet to a point having Coordinates of X = 2,252,130.00 and Y = 258,721.17; thence South 5,601.17 feet to a point having Coordinates of X = 2,252,130.00 and Y = 253,120.00; thence West 8,453.20 feet to a point having Coordinates of X = 2,243,676.80 and Y = 253,120.00; thence South 1,816.91 feet to a point having Coordinates of X = 2,243,676.80 and Y = 251,303.09; thence West 6,569.62 feet to a point having Coordinates of X = 2,237,107.18 and Y = 251,303.09; thence North 01 degrees 12 minutes 00 seconds West 7,117.66 feet to the point of beginning, **LESS AND EXCEPT** in their entirety: State Lease No. 14211, as amended, State Lease No. 17234, as amended, and State Lease No. 17567, as amended, which lie within the above described tract, **ALSO LESS AND EXCEPT** that portion, if any, of State Lease No. 328, as amended, which may lie within the above described tract, containing approximately 1,253 gross acres and approximately **848.53 net acres**, all as more particularly outlined on a plat on file in the Office of Mineral Resources, Department of Natural Resources. All bearings, distances and coordinates are based on Louisiana Coordinate System of 1927, (North or South Zone), where applicable.

NOTE: The above description of the Tract nominated for lease has been provided and corrected, where required, exclusively by the nomination party. Any mineral lease selected from this Tract and awarded by the Louisiana State Mineral Board shall be without warranty of any kind, either express, implied, or statutory, including, but not limited to, the implied warranties of merchantability and fitness for a particular purpose. Should the mineral lease awarded by the Louisiana State Mineral Board be subsequently modified, cancelled or abrogated due to the existence of conflicting leases, operating agreements, private claims or other future obligations or conditions which may affect all or any portion of the leased Tract, it shall not relieve the Lessee of the obligation to pay any bonus due thereon to the Louisiana State Mineral Board, nor shall the Louisiana State Mineral Board be obligated to refund any consideration paid by the Lessor prior to such modification, cancellation, or abrogation, including, but not limited to, bonuses, rentals and royalties.

NOTE: The State of Louisiana does hereby reserve, and this lease shall be subject to, the imprescriptible right of surface use in the nature of a servitude in favor of the Department of Natural Resources, including its Offices and Commissions, for the sole purpose of implementing, constructing, servicing and maintaining approved coastal zone management

and/or restoration projects. Utilization of any and all rights derived under this lease by the mineral lessee, its agents, successors or assigns, shall not interfere with nor hinder the reasonable surface use by the Department of Natural Resources, its Offices or Commissions, as herein above reserved.

NOTE: The Department of Wildlife and Fisheries has designated certain areas in the coastal waters of the State of Louisiana as Oyster Seed Bed Areas. The exact location of those Seed Bed Areas must be obtained from the Department of Wildlife and Fisheries and any work done under a mineral lease from the State of Louisiana may necessarily be conducted in conformity with the rules and regulations promulgated by the said Department of Wildlife and Fisheries for Oyster Seed Bed Areas.

Applicant: JUANITA C. CHATELAIN

Bidder	Cash Payment	Price/Acre	Rental	Oil	Gas	Other

Legend

08100007

Active\_Leases

DOQQ2004

SL 328

SL 17567

SL 14211

SL 17234

P.O.B.

MADISON BAY

TERREBONNE PARISH

T19S - R19E

0 2,000 Feet

**TRACT 40327 - Terrebonne Parish, Louisiana**

All of the lands now or formerly constituting the beds and bottoms of all water bodies of every nature and description as to which title is vested in the State of Louisiana, together with all islands arising therein and other lands formed by accretion or by reliction, where allowed by law, excepting tax adjudicated lands, and not presently under mineral lease on October 8, 2008, situated in Terrebonne Parish, Louisiana, and more particularly described as follows: Beginning at a point having Coordinates of X = 2,255,000.00 and Y = 248,000.00; thence South 01 degrees 44 minutes 20 seconds East 14,995.87 feet to a point having Coordinates of X = 2,255,455.02 and Y = 233,011.03; thence South 88 degrees 43 minutes 37 seconds West 18,395.16 feet to a point having Coordinates of X = 2,237,064.40 and Y = 232,602.35; thence North 00 degrees 14 minutes 46 seconds West 14,997.79 feet to a point having Coordinates of X = 2,237,000.00 and Y = 247,600.00; thence North 88 degrees 43 minutes 37 seconds East 18,004.44 feet to the point of beginning, containing approximately **2,156 acres**, all as more particularly outlined on a plat on file in the Office of Mineral Resources, Department of Natural Resources. All bearings, distances and coordinates are based on Louisiana Coordinate System of 1927, (North or South Zone), where applicable.

NOTE: The above description of the Tract nominated for lease has been provided and corrected, where required, exclusively by the nomination party. Any mineral lease selected from this Tract and awarded by the Louisiana State Mineral Board shall be without warranty of any kind, either express, implied, or statutory, including, but not limited to, the implied warranties of merchantability and fitness for a particular purpose. Should the mineral lease awarded by the Louisiana State Mineral Board be subsequently modified, cancelled or abrogated due to the existence of conflicting leases, operating agreements, private claims or other future obligations or conditions which may affect all or any portion of the leased Tract, it shall not relieve the Lessee of the obligation to pay any bonus due thereon to the Louisiana State Mineral Board, nor shall the Louisiana State Mineral Board be obligated to refund any consideration paid by the Lessor prior to such modification, cancellation, or abrogation, including, but not limited to, bonuses, rentals and royalties.

NOTE: The State of Louisiana does hereby reserve, and this lease shall be subject to, the imprescriptible right of surface use in the nature of a servitude in favor of the Department of Natural Resources, including its Offices and Commissions, for the sole purpose of implementing, constructing, servicing and maintaining approved coastal zone management and/or restoration projects. Utilization of any and all rights derived under this lease by the mineral lessee, its agents, successors or assigns, shall not interfere with nor hinder the reasonable surface use by the Department of Natural Resources, its Offices or Commissions, as herein above reserved.

NOTE: The Department of Wildlife and Fisheries has designated certain areas in the coastal waters of the State of Louisiana as Oyster Seed Bed Areas. The exact location of those Seed Bed Areas must be obtained from the Department of Wildlife and Fisheries and any work done under a mineral lease from the State of Louisiana may necessarily be conducted in conformity with the rules and regulations promulgated by the said Department of Wildlife and Fisheries for Oyster Seed Bed Areas.

Applicant: JUANITA C. CHATELAIN

Bidder	Cash Payment	Price/Acre	Rental	Oil	Gas	Other



P.O.B.

BAYOU BARRE

TERREBONNE PARISH

MADISON BAY

BAYOU DE MANGUE

LAKE TAMBOUR

T20S - R18E

LAKE BARRE



**TRACT 40328 - Plaquemines Parish, Louisiana**

All of the lands now or formerly constituting the beds and bottoms of all water bodies of every nature and description as to which title is vested in the State of Louisiana, together with all islands arising therein and other lands formed by accretion or by reliction, where allowed by law, excepting tax adjudicated lands, and not presently under mineral lease on October 8, 2008, situated in Plaquemines Parish, Louisiana, and more particularly described as follows: Beginning at a point having Coordinates of X = 2,631,407.89 and Y = 186,481.14; thence East 5,394.45 feet to a point having Coordinates of X = 2,636,802.34 and Y = 186,481.14; thence South approximately 2,900 feet to a point of intersection with the North boundary of State Lease No. 451 having a Coordinate of X = 2,636,802.34; thence Westerly approximately 7,777 feet along the North boundary of said State Lease No. 451 to the Southeast corner of State Lease No. 2203, as amended; thence Northerly approximately 2,755 feet along the Eastern boundary of said State Lease No. 2203 to its Easternmost Northeast corner; thence Easterly approximately 2,505 feet on a straight line to the point of beginning, **LESS AND EXCEPT** that portion, if any, of State Lease No. 451 and State Lease No. 2203, as amended, that may lie within the above described tract, containing approximately **508 acres**, all as more particularly outlined on a plat on file in the Office of Mineral Resources, Department of Natural Resources. All bearings, distances and coordinates are based on Louisiana Coordinate System of 1927, (North or South Zone), where applicable.

NOTE: The above description of the Tract nominated for lease has been provided and corrected, where required, exclusively by the nomination party. Any mineral lease selected from this Tract and awarded by the Louisiana State Mineral Board shall be without warranty of any kind, either express, implied, or statutory, including, but not limited to, the implied warranties of merchantability and fitness for a particular purpose. Should the mineral lease awarded by the Louisiana State Mineral Board be subsequently modified, cancelled or abrogated due to the existence of conflicting leases, operating agreements, private claims or other future obligations or conditions which may affect all or any portion of the leased Tract, it shall not relieve the Lessee of the obligation to pay any bonus due thereon to the Louisiana State Mineral Board, nor shall the Louisiana State Mineral Board be obligated to refund any consideration paid by the Lessor prior to such modification, cancellation, or abrogation, including, but not limited to, bonuses, rentals and royalties.

NOTE: The State of Louisiana does hereby reserve, and this lease shall be subject to, the imprescriptible right of surface use in the nature of a servitude in favor of the Department of Natural Resources, including its Offices and Commissions, for the sole purpose of implementing, constructing, servicing and maintaining approved coastal zone management and/or restoration projects. Utilization of any and all rights derived under this lease by the mineral lessee, its agents, successors or assigns, shall not interfere with nor hinder the reasonable surface use by the

Department of Natural Resources, its Offices or Commissions, as herein above reserved.

NOTE: The Department of Wildlife and Fisheries has designated certain areas in the coastal waters of the State of Louisiana as Oyster Seed Bed Areas. The exact location of those Seed Bed Areas must be obtained from the Department of Wildlife and Fisheries and any work done under a mineral lease from the State of Louisiana may necessarily be conducted in conformity with the rules and regulations promulgated by the said Department of Wildlife and Fisheries for Oyster Seed Bed Areas.

Applicant: MARK A. O'NEAL & ASSOCIATES, INC.

Bidder	Cash Payment	Price/Acre	Rental	Oil	Gas	Other

**Legend**  
08100109  
Active\_Leases  
DOQQ2004

