

TRACT 40310 - Lafourche and Terrebonne Parishes, Louisiana

All of the lands now or formerly constituting the beds and bottoms of all water bodies of every nature and description as to which title is vested in the State of Louisiana, together with all islands arising therein and other lands formed by accretion or by reliction, where allowed by law, excepting tax adjudicated lands, and not presently under mineral lease on October 8, 2008, situated in Lafourche and Terrebonne Parishes, Louisiana, and more particularly described as follows: Beginning at a Point having Coordinates of X = 2,266,759.48 and Y = 295,039.63; thence North 89 degrees 17 minutes 11 seconds East approximately 2,693 feet to a point on the boundary of Pointe Aux Chenes State Wildlife Management Area; thence Southerly, Easterly, Southerly, Easterly, Southerly, Westerly, Southerly, Northwesterly, Southwesterly, Northwesterly, Northeasterly, Northwesterly, Westerly, Northerly, Westerly, Northerly, Westerly, Northerly, Westerly, Northerly, along the said boundary of Pointe Aux Chenes State Wildlife Management Area to a point that intersects a line that bears South 89 degrees 17 minutes 11 seconds West from a point having Coordinates of X = 2,266,759.48 and Y = 295,039.63; thence North 89 degrees 17 minutes 11 seconds East along said line approximately 4,067 feet to the point of beginning, **LESS AND EXCEPT** that portion, if any, that lies within the Pointe Aux Chenes State Wildlife Management Area, containing approximately **7 acres**, all as more particularly outlined on a plat on file in the Office of Mineral Resources, Department of Natural Resources. All bearings, distances and coordinates are based on Louisiana Coordinate System of 1927, (North or South Zone), where applicable.

Deleted: ¶
¶

Deleted: ¶
¶

Deleted: ¶
¶

Deleted: ¶
¶

NOTE: The above description of the Tract nominated for lease has been provided and corrected, where required, exclusively by the nomination party. Any mineral lease selected from this Tract and awarded by the Louisiana State Mineral Board shall be without warranty of any kind, either express, implied, or statutory, including, but not limited to, the implied warranties of merchantability and fitness for a particular purpose. Should the mineral lease awarded by the Louisiana State Mineral Board be subsequently modified, cancelled or abrogated due to the existence of conflicting leases, operating agreements, private claims or other future obligations or conditions which may affect all or any portion of the leased Tract, it shall not relieve the Lessee of the obligation to pay any bonus due thereon to the Louisiana State Mineral Board, nor shall the Louisiana State Mineral Board be obligated to refund any consideration paid by the Lessor prior to such modification, cancellation, or abrogation, including, but not limited to, bonuses, rentals and royalties.

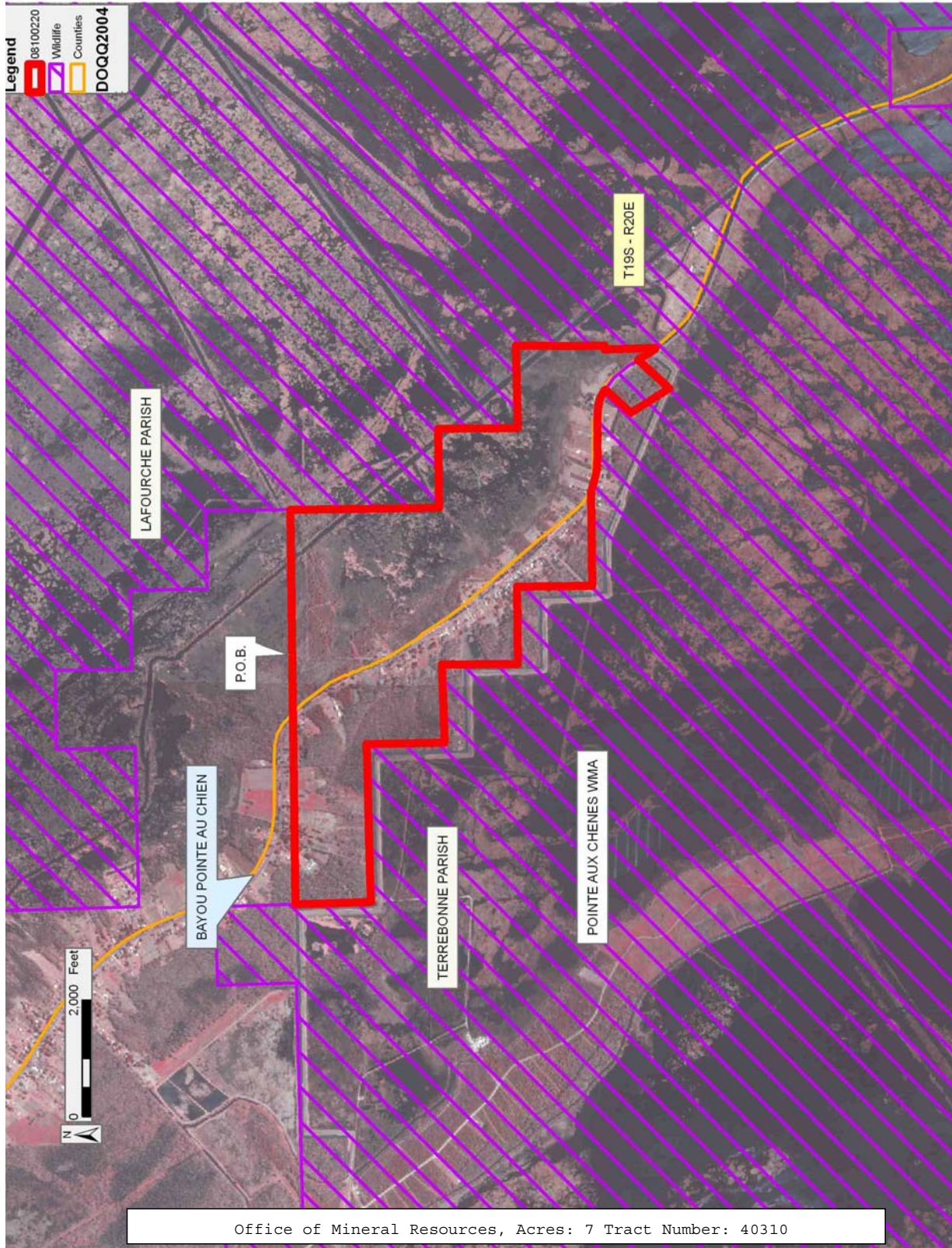
NOTE: The State of Louisiana does hereby reserve, and this lease shall be subject to, the imprescriptible right of surface use in the nature of a servitude in favor of the Department of Natural Resources, including its Offices and Commissions, for the sole purpose of implementing, constructing, servicing and maintaining approved coastal zone management and/or restoration projects. Utilization of any and all rights derived under this lease by the mineral lessee, its agents, successors or assigns, shall not interfere with nor hinder the reasonable surface use by the

Department of Natural Resources, its Offices or Commissions, as herein above reserved.

Applicant: STARKS OIL CORPORATION

Bidder	Cash Payment	Price/Acre	Rental	Oil	Gas	Other

Legend
08100220
Wildlife
Counties
DOQQ2004



Office of Mineral Resources, Acres: 7 Tract Number: 40310

TRACT 40311 - Iberia Parish, Louisiana

All of the lands now or formerly constituting the beds and bottoms of all water bodies of every nature and description as to which title is vested in the State of Louisiana, together with all islands arising therein and other lands formed by accretion or by reliction, where allowed by law, excepting tax adjudicated lands, and not presently under mineral lease on October 8, 2008, situated in Iberia Parish, Louisiana, and more particularly described as follows: Beginning at the Southwest corner of State Lease No. 19381 having Coordinates of X = 1,867,960.00 and Y = 300,540.00; thence East 6,343.00 feet along the Southern boundary of said State Lease No. 19381 to its Southeast corner having Coordinates of X = 1,874,303.00 and Y = 300,540.00; thence South 2,906.00 feet to a point having Coordinates of X = 1,874,303.00 and Y = 297,634.00; thence West 6,343.00 feet to a point having Coordinates of X = 1,867,960.00 and Y = 297,634.00; thence North 2,906.00 feet to the point of beginning, containing approximately **423.16 acres**, all as more particularly outlined on a plat on file in the Office of Mineral Resources, Department of Natural Resources. All bearings, distances and coordinates are based on Louisiana Coordinate System of 1927, (North or South Zone), where applicable.

NOTE: The above description of the Tract nominated for lease has been provided and corrected, where required, exclusively by the nomination party. Any mineral lease selected from this Tract and awarded by the Louisiana State Mineral Board shall be without warranty of any kind, either express, implied, or statutory, including, but not limited to, the implied warranties of merchantability and fitness for a particular purpose. Should the mineral lease awarded by the Louisiana State Mineral Board be subsequently modified, cancelled or abrogated due to the existence of conflicting leases, operating agreements, private claims or other future obligations or conditions which may affect all or any portion of the leased Tract, it shall not relieve the Lessee of the obligation to pay any bonus due thereon to the Louisiana State Mineral Board, nor shall the Louisiana State Mineral Board be obligated to refund any consideration paid by the Lessor prior to such modification, cancellation, or abrogation, including, but not limited to, bonuses, rentals and royalties.

NOTE: The Office of Mineral Resources will require a minimum bonus of \$350 per acre and a minimum royalty of 25%.

NOTE: The above described tract may be in the vicinity of existing shell reefs where drilling and dredging operations must be conducted in strict conformity with the regulations adopted by the Louisiana Department of Wildlife and Fisheries and/or the U.S. Corps of Engineers, U.S. Army.

NOTE: The State of Louisiana does hereby reserve, and this lease shall be subject to, the imprescriptible right of surface use in the nature of a servitude in favor of the Department of Natural Resources, including its Offices and Commissions, for the sole purpose of implementing,

constructing, servicing and maintaining approved coastal zone management and/or restoration projects. Utilization of any and all rights derived under this lease by the mineral lessee, its agents, successors or assigns, shall not interfere with nor hinder the reasonable surface use by the Department of Natural Resources, its Offices or Commissions, as herein above reserved.

NOTE: The Department of Wildlife and Fisheries has designated certain areas in the coastal waters of the State of Louisiana as Oyster Seed Bed Areas. The exact location of those Seed Bed Areas must be obtained from the Department of Wildlife and Fisheries and any work done under a mineral lease from the State of Louisiana may necessarily be conducted in conformity with the rules and regulations promulgated by the said Department of Wildlife and Fisheries for Oyster Seed Bed Areas.

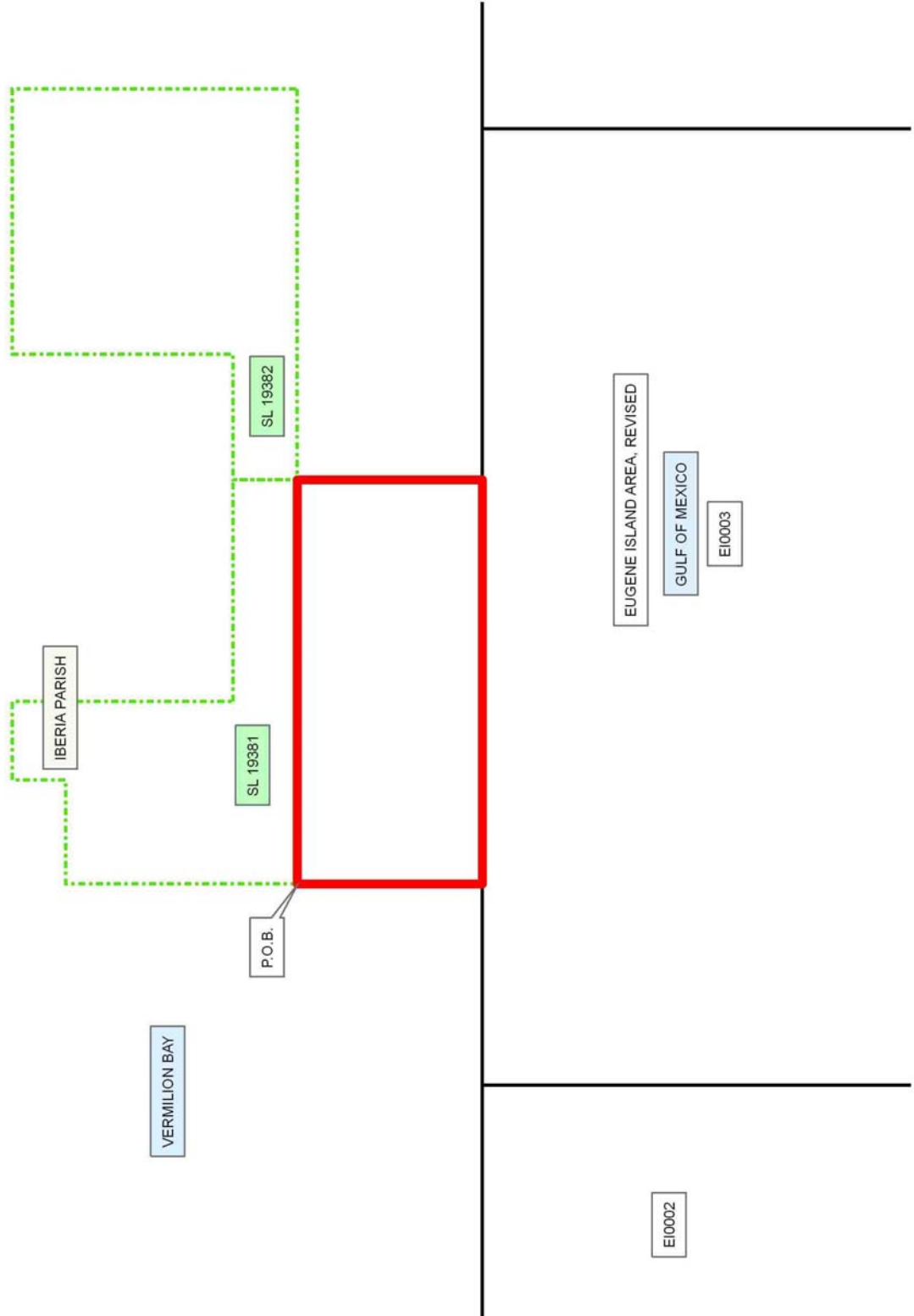
NOTE: All or a portion of this Tract lies within one nautical mile of the boundary of the Russell Sage or Marsh Island Wildlife Refuge and Game Preserve. Any activities connected with this lease conducted within this Tract which may pose potential environmental impacts to the said Wildlife Refuge and Game Preserve should be coordinated with the Louisiana Department of Wildlife and Fisheries.

Applicant: PATRICK L. DONOHUE PETROLEUM PROPERTIES, INC.

Bidder	Cash Payment	Price/Acre	Rental	Oil	Gas	Other

Legend

- 08100023
- Blocks
- Active_Leases



Office of Mineral Resources, Acres: 423.16 Tract Number: 40311

TRACT 40312 - Terrebonne Parish, Louisiana

All of the lands now or formerly constituting the beds and bottoms of all water bodies of every nature and description as to which title is vested in the State of Louisiana, together with all islands arising therein and other lands formed by accretion or by reliction, where allowed by law, excepting tax adjudicated lands, and not presently under mineral lease on October 8, 2008, situated in Terrebonne Parish, Louisiana, and more particularly described as follows: Beginning at the Westernmost Southwest corner of State Lease No. 19530 having Coordinates of X = 2,049,500.00 and Y = 297,996.77; thence along the boundary of said State Lease No. 19530 the following courses: South 77 degrees 00 minutes 00 seconds East 7,150.35 feet to a point having Coordinates of X = 2,056,467.09 and Y = 296,388.29 and South 01 degrees 40 minutes 49 seconds East 3,051.96 feet to a point having Coordinates of X = 2,056,556.58 and Y = 293,337.64; thence South 2,637.64 feet to a point having Coordinates of X = 2,056,556.58 and Y = 290,700.00; thence West 954.70 feet to the Northeast corner of State Lease No. 19587 having Coordinates of X = 2,055,601.88 and Y = 290,700.00; thence West 5,700.07 feet along the North boundary of said State Lease No. 19587 to its Northwest corner having Coordinates of X = 2,049,901.81 and Y = 290,700.00; thence West 401.81 feet to a point having Coordinates of X = 2,049,500.00 and Y = 290,700.00; thence North 7,296.77 feet to the point of beginning, containing approximately **44 acres**, all as more particularly outlined on a plat on file in the Office of Mineral Resources, Department of Natural Resources. All bearings, distances and coordinates are based on Louisiana Coordinate System of 1927, (North or South Zone), where applicable.

NOTE: The above description of the Tract nominated for lease has been provided and corrected, where required, exclusively by the nomination party. Any mineral lease selected from this Tract and awarded by the Louisiana State Mineral Board shall be without warranty of any kind, either express, implied, or statutory, including, but not limited to, the implied warranties of merchantability and fitness for a particular purpose. Should the mineral lease awarded by the Louisiana State Mineral Board be subsequently modified, cancelled or abrogated due to the existence of conflicting leases, operating agreements, private claims or other future obligations or conditions which may affect all or any portion of the leased Tract, it shall not relieve the Lessee of the obligation to pay any bonus due thereon to the Louisiana State Mineral Board, nor shall the Louisiana State Mineral Board be obligated to refund any consideration paid by the Lessor prior to such modification, cancellation, or abrogation, including, but not limited to, bonuses, rentals and royalties.

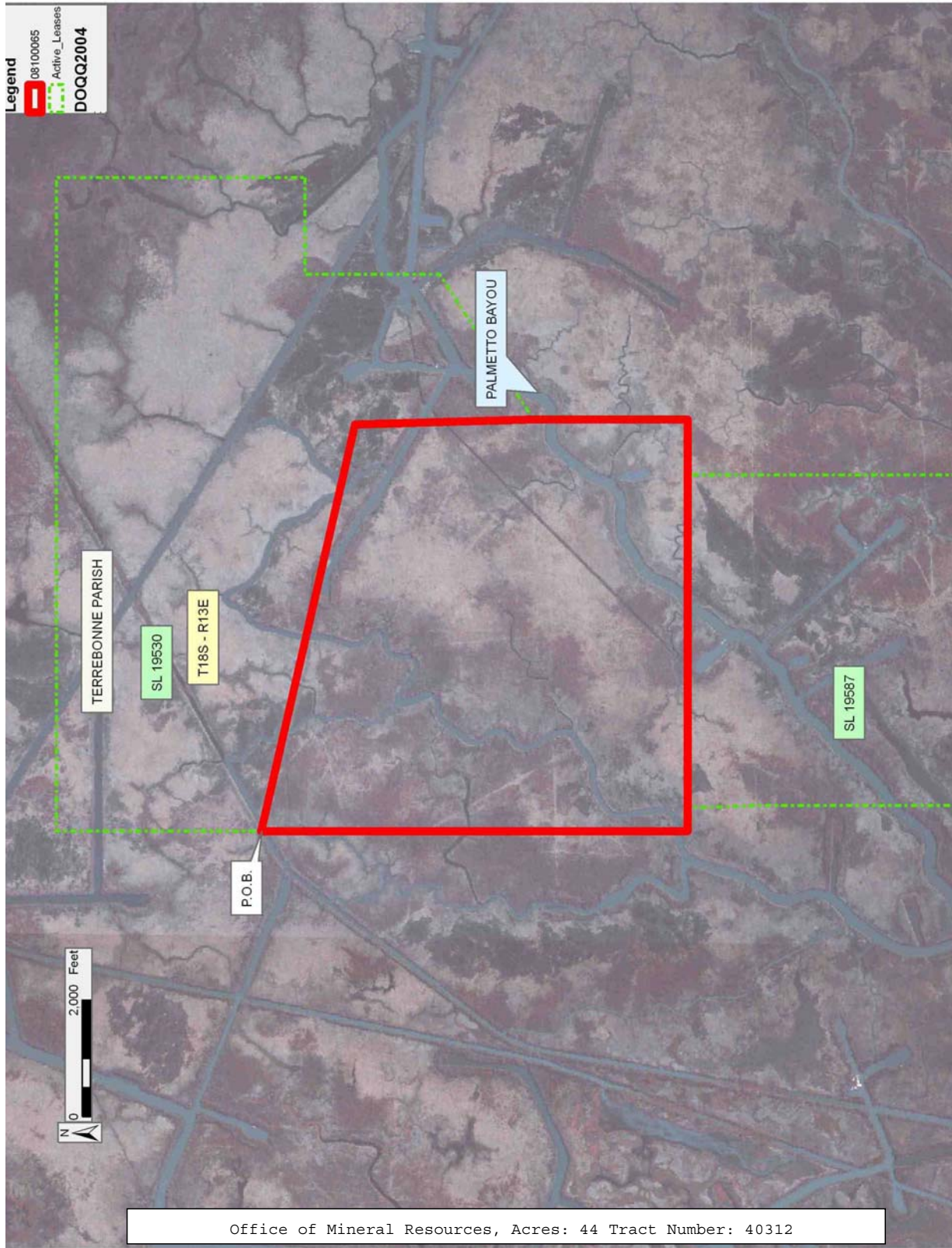
NOTE: The State of Louisiana does hereby reserve, and this lease shall be subject to, the imprescriptible right of surface use in the nature of a servitude in favor of the Department of Natural Resources, including its Offices and Commissions, for the sole purpose of implementing, constructing, servicing and maintaining approved coastal zone management and/or restoration projects. Utilization of any and all rights derived

under this lease by the mineral lessee, its agents, successors or assigns, shall not interfere with nor hinder the reasonable surface use by the Department of Natural Resources, its Offices or Commissions, as herein above reserved.

Applicant: THEOPHILUS OIL, GAS & LAND SERVICES, LLC

Bidder	Cash Payment	Price/Acre	Rental	Oil	Gas	Other

Legend
08100065
Active_Leases
DOQQ2004



Office of Mineral Resources, Acres: 44 Tract Number: 40312

TRACT 40313 - Portion of Block 3, Eugene Island Area, Revised, Iberia Parish, Louisiana

All of the lands now or formerly constituting the beds and bottoms of all water bodies of every nature and description as to which title is vested in the State of Louisiana, together with all islands arising therein and other lands formed by accretion or by reliction, where allowed by law, excepting tax adjudicated lands, and not presently under mineral lease on October 8, 2008, situated in Iberia Parish, Louisiana, and more particularly described as follows: Beginning at a point on the North line of Block 3, Eugene Island Area, Revised, also being the Northeast corner of State Lease No. 19412 having Coordinates of X = 1,867,300.56 and Y = 297,634.00; thence East 7,002.44 feet along the North line of said Block 3 to a point having Coordinates of X = 1,874,303.00 and Y = 297,634.00; thence South 3,821.84 feet to a point on the Northern boundary of State Lease No. 19283 having Coordinates of X = 1,874,303.00 and Y = 293,812.16; thence along the boundary of said State Lease No. 19283 the following courses: North 79 degrees 42 minutes 48 seconds West 228.68 feet; North 80 degrees 50 minutes 00 seconds West 4,142.91 feet and North 69 degrees 16 minutes 04 seconds West 2,873.52 feet to the Southeast corner of said State Lease No. 19412 having Coordinates of X = 1,867,300.56 and Y = 295,530.23; thence North 2,103.77 feet along the Eastern boundary of said State Lease No. 19412 to the point of beginning, containing approximately **504.83 acres**, all as more particularly outlined on a plat on file in the Office of Mineral Resources, Department of Natural Resources. All bearings, distances and coordinates are based on Louisiana Coordinate System of 1927, (North or South Zone), where applicable.

NOTE: The above description of the Tract nominated for lease has been provided and corrected, where required, exclusively by the nomination party. Any mineral lease selected from this Tract and awarded by the Louisiana State Mineral Board shall be without warranty of any kind, either express, implied, or statutory, including, but not limited to, the implied warranties of merchantability and fitness for a particular purpose. Should the mineral lease awarded by the Louisiana State Mineral Board be subsequently modified, cancelled or abrogated due to the existence of conflicting leases, operating agreements, private claims or other future obligations or conditions which may affect all or any portion of the leased Tract, it shall not relieve the Lessee of the obligation to pay any bonus due thereon to the Louisiana State Mineral Board, nor shall the Louisiana State Mineral Board be obligated to refund any consideration paid by the Lessor prior to such modification, cancellation, or abrogation, including, but not limited to, bonuses, rentals and royalties.

NOTE: The Office of Mineral Resources will require a minimum bonus of \$350 per acre and a minimum royalty of 25%.

NOTE: The above described tract may be in the vicinity of existing shell reefs where drilling and dredging operations must be conducted in strict

conformity with the regulations adopted by the Louisiana Department of Wildlife and Fisheries and/or the U.S. Corps of Engineers, U.S. Army.

NOTE: The State of Louisiana does hereby reserve, and this lease shall be subject to, the imprescriptible right of surface use in the nature of a servitude in favor of the Department of Natural Resources, including its Offices and Commissions, for the sole purpose of implementing, constructing, servicing and maintaining approved coastal zone management and/or restoration projects. Utilization of any and all rights derived under this lease by the mineral lessee, its agents, successors or assigns, shall not interfere with nor hinder the reasonable surface use by the Department of Natural Resources, its Offices or Commissions, as herein above reserved.

NOTE: The Department of Wildlife and Fisheries has designated certain areas in the coastal waters of the State of Louisiana as Oyster Seed Bed Areas. The exact location of those Seed Bed Areas must be obtained from the Department of Wildlife and Fisheries and any work done under a mineral lease from the State of Louisiana may necessarily be conducted in conformity with the rules and regulations promulgated by the said Department of Wildlife and Fisheries for Oyster Seed Bed Areas.

NOTE: All or a portion of this Tract lies within one nautical mile of the boundary of the Russell Sage or Marsh Island Wildlife Refuge and Game Preserve. Any activities connected with this lease conducted within this Tract which may pose potential environmental impacts to the said Wildlife Refuge and Game Preserve should be coordinated with the Louisiana Department of Wildlife and Fisheries.

Applicant: PATRICK L. DONOHUE PETROLEUM PROPERTIES, INC.

Bidder	Cash Payment	Price/Acre	Rental	Oil	Gas	Other

Legend

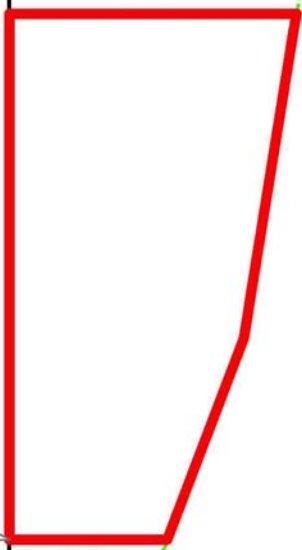
- 08100024
- Blocks
- Active_Leases



IBERIA PARISH

P.O.B.

SL 19412



GULF OF MEXICO

EI0003

EUGENE ISLAND AREA, REVISED

SL 19283

EI0002

Office of Mineral Resources, Acres: 504.83 Tract Number: 40313

TRACT 40314 - Terrebonne Parish, Louisiana

All of the lands now or formerly constituting the beds and bottoms of all water bodies of every nature and description as to which title is vested in the State of Louisiana, together with all islands arising therein and other lands formed by accretion or by reliction, where allowed by law, excepting tax adjudicated lands, and not presently under mineral lease on October 8, 2008, situated in Terrebonne Parish, Louisiana, and more particularly described as follows: Beginning at a point on the Southern boundary of State Lease No. 19530, also being the Southwest corner of State Lease No. 17210, as amended, having Coordinates of X = 2,059,040.00 and Y = 294,943.00; thence East 1,660.00 feet along the South boundary of said State Lease No. 17210 to a point having Coordinates of X = 2,060,700.00 and Y = 294,943.00; thence South 4,243.00 feet to a point having Coordinates of X = 2,060,700.00 and Y = 290,700.00; thence West 4,143.42 feet to a point having Coordinates of X = 2,056,556.58 and Y = 290,700.00; thence North 2,637.64 feet to the Southernmost Southwest corner of said State Lease No. 19530 having Coordinates of X = 2,056,556.58 and Y = 293,337.64; thence North 57 degrees 07 minutes 12 seconds East 2,957.12 feet along the Southern boundary of said State Lease No. 19530 to the point of beginning, containing approximately **5 acres**, all as more particularly outlined on a plat on file in the Office of Mineral Resources, Department of Natural Resources. All bearings, distances and coordinates are based on Louisiana Coordinate System of 1927, (North or South Zone), where applicable.

NOTE: The above description of the Tract nominated for lease has been provided and corrected, where required, exclusively by the nomination party. Any mineral lease selected from this Tract and awarded by the Louisiana State Mineral Board shall be without warranty of any kind, either express, implied, or statutory, including, but not limited to, the implied warranties of merchantability and fitness for a particular purpose. Should the mineral lease awarded by the Louisiana State Mineral Board be subsequently modified, cancelled or abrogated due to the existence of conflicting leases, operating agreements, private claims or other future obligations or conditions which may affect all or any portion of the leased Tract, it shall not relieve the Lessee of the obligation to pay any bonus due thereon to the Louisiana State Mineral Board, nor shall the Louisiana State Mineral Board be obligated to refund any consideration paid by the Lessor prior to such modification, cancellation, or abrogation, including, but not limited to, bonuses, rentals and royalties.

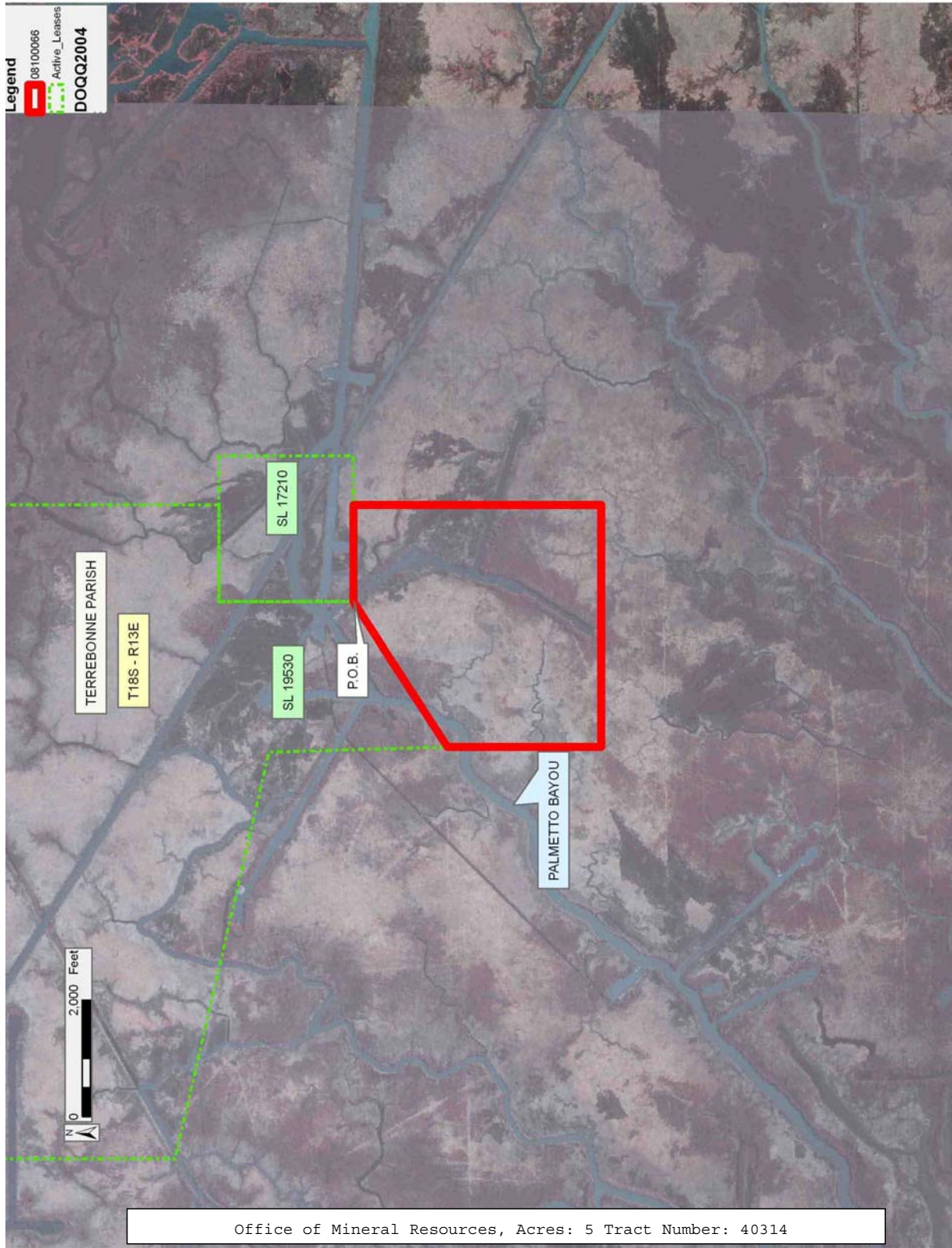
NOTE: The State of Louisiana does hereby reserve, and this lease shall be subject to, the imprescriptible right of surface use in the nature of a servitude in favor of the Department of Natural Resources, including its Offices and Commissions, for the sole purpose of implementing, constructing, servicing and maintaining approved coastal zone management and/or restoration projects. Utilization of any and all rights derived under this lease by the mineral lessee, its agents, successors or assigns, shall not interfere with nor hinder the reasonable surface use by the

Department of Natural Resources, its Offices or Commissions, as herein above reserved.

Applicant: THEOPHILUS OIL, GAS & LAND SERVICES, LLC

Bidder	Cash Payment	Price/Acre	Rental	Oil	Gas	Other

Legend
081000066
Active Leases
DOQQ2004



Office of Mineral Resources, Acres: 5 Tract Number: 40314

TRACT 40315 - Terrebonne Parish, Louisiana

All of the lands now or formerly constituting the beds and bottoms of all water bodies of every nature and description as to which title is vested in the State of Louisiana, together with all islands arising therein and other lands formed by accretion or by reliction, where allowed by law, excepting tax adjudicated lands, and not presently under mineral lease on October 8, 2008, situated in Terrebonne Parish, Louisiana, and more particularly described as follows: Beginning at a Point having Coordinates of X = 2,235,896.31 and Y = 289,069.32; thence North 88 degrees 53 minutes 19 seconds East 10,709.06 feet to a point having Coordinates of X = 2,246,603.36 and Y = 289,277.03; thence South 13 degrees 36 minutes 33 seconds West 10,911.91 feet to a point having Coordinates of X = 2,244,035.79 and Y = 278,671.50; thence South 00 degrees 17 minutes 02 seconds East 1,322.55 feet to a point having Coordinates of X = 2,244,042.35 and Y = 277,348.97; thence South 89 degrees 42 minutes 58 seconds West 8,087.88 feet to a point having Coordinates of X = 2,235,954.57 and Y = 277,308.91; thence North 00 degrees 17 minutes 02 seconds West 11,760.55 feet to the point of beginning, **LESS AND EXCEPT** that portion, if any, that lies within the boundary of State Lease No. 328, containing approximately **72 acres**, all as more particularly outlined on a plat on file in the Office of Mineral Resources, Department of Natural Resources. All bearings, distances and coordinates are based on Louisiana Coordinate System of 1927, (North or South Zone), where applicable.

NOTE: The above description of the Tract nominated for lease has been provided and corrected, where required, exclusively by the nomination party. Any mineral lease selected from this Tract and awarded by the Louisiana State Mineral Board shall be without warranty of any kind, either express, implied, or statutory, including, but not limited to, the implied warranties of merchantability and fitness for a particular purpose. Should the mineral lease awarded by the Louisiana State Mineral Board be subsequently modified, cancelled or abrogated due to the existence of conflicting leases, operating agreements, private claims or other future obligations or conditions which may affect all or any portion of the leased Tract, it shall not relieve the Lessee of the obligation to pay any bonus due thereon to the Louisiana State Mineral Board, nor shall the Louisiana State Mineral Board be obligated to refund any consideration paid by the Lessor prior to such modification, cancellation, or abrogation, including, but not limited to, bonuses, rentals and royalties.

NOTE: The State of Louisiana does hereby reserve, and this lease shall be subject to, the imprescriptible right of surface use in the nature of a servitude in favor of the Department of Natural Resources, including its Offices and Commissions, for the sole purpose of implementing, constructing, servicing and maintaining approved coastal zone management and/or restoration projects. Utilization of any and all rights derived under this lease by the mineral lessee, its agents, successors or assigns, shall not interfere with nor hinder the reasonable surface use by the

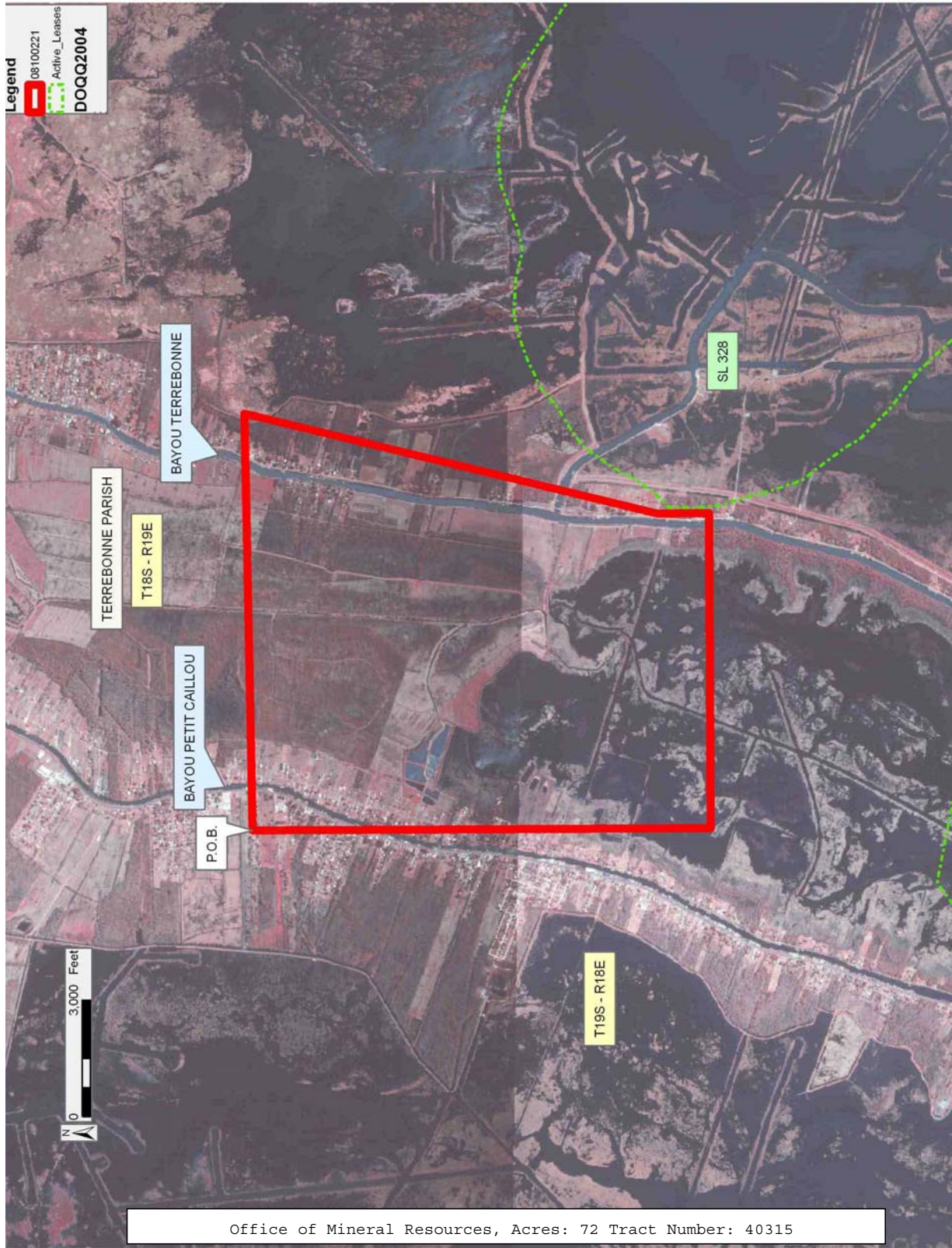
Department of Natural Resources, its Offices or Commissions, as herein above reserved.

NOTE: The Department of Wildlife and Fisheries has designated certain areas in the coastal waters of the State of Louisiana as Oyster Seed Bed Areas. The exact location of those Seed Bed Areas must be obtained from the Department of Wildlife and Fisheries and any work done under a mineral lease from the State of Louisiana may necessarily be conducted in conformity with the rules and regulations promulgated by the said Department of Wildlife and Fisheries for Oyster Seed Bed Areas.

Applicant: STARKS OIL CORPORATION

Bidder	Cash Payment	Price/Acre	Rental	Oil	Gas	Other

Legend
08100221
Active Leases
DOQQ2004



Office of Mineral Resources, Acres: 72 Tract Number: 40315

TRACT 40316 - Portion of Block 46, Main Pass Area, Revised, Plaquemines Parish, Louisiana

All of the lands now or formerly constituting the beds and bottoms of all water bodies of every nature and description as to which title is vested in the State of Louisiana, together with all islands arising therein and other lands formed by accretion or by reliction, where allowed by law, excepting tax adjudicated lands, and not presently under mineral lease on October 8, 2008, situated in Plaquemines Parish, Louisiana, and more particularly described as follows: Beginning at the Northwest corner of Block 46, Main Pass Area, Revised, having Coordinates of X = 2,664,850.00 and Y = 278,080.00; thence East 7,375.00 feet along the North line of said Block 46 to the Northwest corner of a portion of State Lease No. 2726, as amended, having Coordinates of X = 2,672,225.00 and Y = 278,080.00; thence along the boundary of said State Lease No. 2726 the following courses: South 4,400 feet; South 80 degrees 00 minutes 05 seconds East 1,500.04 feet; South 85 degrees 30 minutes 00 seconds East 2,000.01 feet; South 88 degrees 30 minutes 00 seconds East 1,500.01 feet; North 87 degrees 30 minutes 00 seconds East 600.00 feet; North 76 degrees 21 minutes 00 seconds East 1,188.61 feet; North 38 degrees 27 minutes 00 seconds West 1,627.30 feet; North 42 degrees 00 minutes 00 seconds West 1,500.00 feet; North 52 degrees 00 minutes 00 seconds West 1,000.00 feet and North 59 degrees 00 minutes 00 seconds West 3,000.00 feet to its Northeast corner, also being a point on the North line of said Block 46 having Coordinates of X = 2,673,575.00 and Y = 278,080.00; thence East 2,975.00 feet along the North line of said Block 46 to the Northwest corner of State Lease No. 17052, as amended, having Coordinates of X = 2,676,550.00 and Y = 278,080.00; thence along the boundary of said State Lease No. 17052 the following courses: South 1,400.00 feet; South 42 degrees 13 minutes 15 seconds East 1,277.41 feet and East 2,191.59 feet to its Southeast corner also being a point on the East line of said Block 46 having Coordinates of X = 2,679,600.00 and Y = 275,734.00; thence South 2,854.00 feet along the East line of said Block 46 to the Northeast corner of State Lease No. 19083 having Coordinates of X = 2,679,600.00 and Y = 272,880.00; thence West 7,115.82 feet along the North boundary of said State Lease No. 19083 to the Easternmost corner of State Lease No. 19474 having Coordinates of X = 2,672,484.18 and Y = 272,880.00; thence North 56 degrees 44 minutes 44 seconds West 1,823.63 feet along the Eastern boundary of said State Lease No. 19474 to a point on the Southern boundary of a portion of State Lease No. 2726, as amended, having Coordinates of X = 2,670,959.18 and Y = 273,880.00; thence along the boundary of said State Lease No. 2726 the following courses: East 330.82 feet; North 2,640.00 feet; West 2,640.00 feet and South 2,640.00 feet to its Southwest corner also being the Northwest corner of said State Lease No. 19474 having Coordinates of X = 2,668,650.00 and Y = 273,880.00; thence South 28 degrees 56 minutes 15 seconds East 2,376.74 feet along the Western boundary of said State Lease No. 19474 to its Southwest corner having Coordinates of X = 2,669,800.00 and Y = 271,800.00; thence West 4,950.00 feet to a point on the West line of said Block 46 having Coordinates of X = 2,664,850.00 and Y = 271,800.00; thence North 6,280.00 feet along the West line of said Block

46 to the point of beginning, containing approximately **1,001.58 acres**, all as more particularly outlined on a plat on file in the Office of Mineral Resources, Department of Natural Resources. All bearings, distances and coordinates are based on Louisiana Coordinate System of 1927, (North or South Zone), where applicable.

NOTE: The above description of the Tract nominated for lease has been provided and corrected, where required, exclusively by the nomination party. Any mineral lease selected from this Tract and awarded by the Louisiana State Mineral Board shall be without warranty of any kind, either express, implied, or statutory, including, but not limited to, the implied warranties of merchantability and fitness for a particular purpose. Should the mineral lease awarded by the Louisiana State Mineral Board be subsequently modified, cancelled or abrogated due to the existence of conflicting leases, operating agreements, private claims or other future obligations or conditions which may affect all or any portion of the leased Tract, it shall not relieve the Lessee of the obligation to pay any bonus due thereon to the Louisiana State Mineral Board, nor shall the Louisiana State Mineral Board be obligated to refund any consideration paid by the Lessor prior to such modification, cancellation, or abrogation, including, but not limited to, bonuses, rentals and royalties.

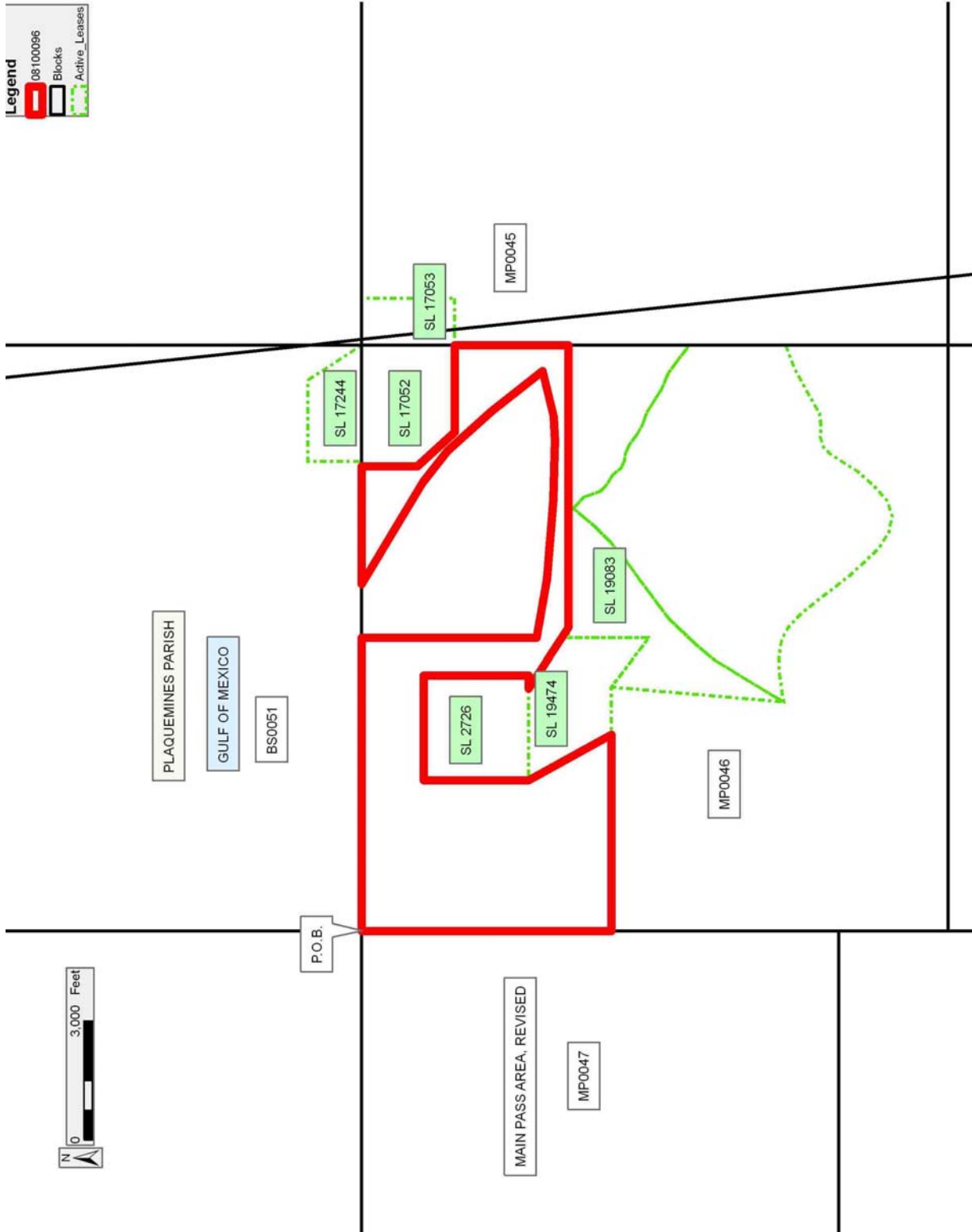
NOTE: The State of Louisiana does hereby reserve, and this lease shall be subject to, the imprescriptible right of surface use in the nature of a servitude in favor of the Department of Natural Resources, including its Offices and Commissions, for the sole purpose of implementing, constructing, servicing and maintaining approved coastal zone management and/or restoration projects. Utilization of any and all rights derived under this lease by the mineral lessee, its agents, successors or assigns, shall not interfere with nor hinder the reasonable surface use by the Department of Natural Resources, its Offices or Commissions, as herein above reserved.

Applicant: HAROLD J. ANDERSON, INC.

Bidder	Cash Payment	Price/Acre	Rental	Oil	Gas	Other

Legend

- 08100096
- Blocks
- Active_Leases



Office of Mineral Resources, Acres: 1001.58 Tract Number: 40316

TRACT 40317 - Portion of Block 47, Main Pass Area, Revised, Plaquemines Parish, Louisiana

All of the lands now or formerly constituting the beds and bottoms of all water bodies of every nature and description as to which title is vested in the State of Louisiana, together with all islands arising therein and other lands formed by accretion or by reliction, where allowed by law, excepting tax adjudicated lands, and not presently under mineral lease on October 8, 2008, situated in Plaquemines Parish, Louisiana, and more particularly described as follows: Beginning at the Northeast corner of State Lease No. 16392 also being a point on the North line of Block 47, Main Pass Area, Revised, having Coordinates of X = 2,654,350.00 and Y = 278,080.00; thence East 10,500.00 feet along the North line of said Block 47 to its Northeast corner having Coordinates of X = 2,664,850.00 and Y = 278,080.00; thence South 12,000.00 feet along the East line of said Block 47 to its Southeast corner having Coordinates of X = 2,664,850.00 and Y = 266,080.00; thence West 4,500.00 feet along the South line of said Block 47 to the Southeast corner of State Lease No. 1268, as amended, having Coordinates of X = 2,660,350.00 and Y = 266,080.00; thence North 900.00 feet along the Eastern boundary of said State Lease No. 1268 to the Southwest corner of State Lease No. 15906 having Coordinates of X = 2,660,350.00 and Y = 266,980.00; thence along the boundary of said State Lease No. 15906 the following courses: East 3,194.40 feet; North 4,500.00 feet and West 3,194.40 feet to its Northwest corner, also being the Northeast corner of said State Lease No. 1268 having Coordinates of X = 2,660,350.00 and Y = 271,480.00; thence West 2,250.00 feet along the Northern boundary of said State Lease No. 1268 to a point having Coordinates of X = 2,658,100.00 and Y = 271,480.00; thence North 1,610.04 feet to a point having Coordinates of X = 2,658,100.00 and Y = 273,090.04; thence West 2,789.75 feet to the Southeast corner of State Lease No. 16570, as amended, having Coordinates of X = 2,655,310.25 and Y = 273,090.04; thence North 24 degrees 40 minutes 37 seconds West 2,300.00 feet along the Eastern boundary of said State Lease No. 16570 to its Northeast corner also being the Southeast corner of said State Lease No. 16392 having Coordinates of X = 2,654,350.00 and Y = 275,180.00; thence North 2,900.00 feet along the Eastern boundary of said State Lease No. 16392 to the point of beginning, containing approximately **1,657.12 acres**, all as more particularly outlined on a plat on file in the Office of Mineral Resources, Department of Natural Resources. All bearings, distances and coordinates are based on Louisiana Coordinate System of 1927, (North or South Zone), where applicable.

NOTE: The above description of the Tract nominated for lease has been provided and corrected, where required, exclusively by the nomination party. Any mineral lease selected from this Tract and awarded by the Louisiana State Mineral Board shall be without warranty of any kind, either express, implied, or statutory, including, but not limited to, the implied warranties of merchantability and fitness for a particular purpose. Should the mineral lease awarded by the Louisiana State Mineral Board be subsequently modified, cancelled or abrogated due to the




existence of conflicting leases, operating agreements, private claims or other future obligations or conditions which may affect all or any portion of the leased Tract, it shall not relieve the Lessee of the obligation to pay any bonus due thereon to the Louisiana State Mineral Board, nor shall the Louisiana State Mineral Board be obligated to refund any consideration paid by the Lessor prior to such modification, cancellation, or abrogation, including, but not limited to, bonuses, rentals and royalties.

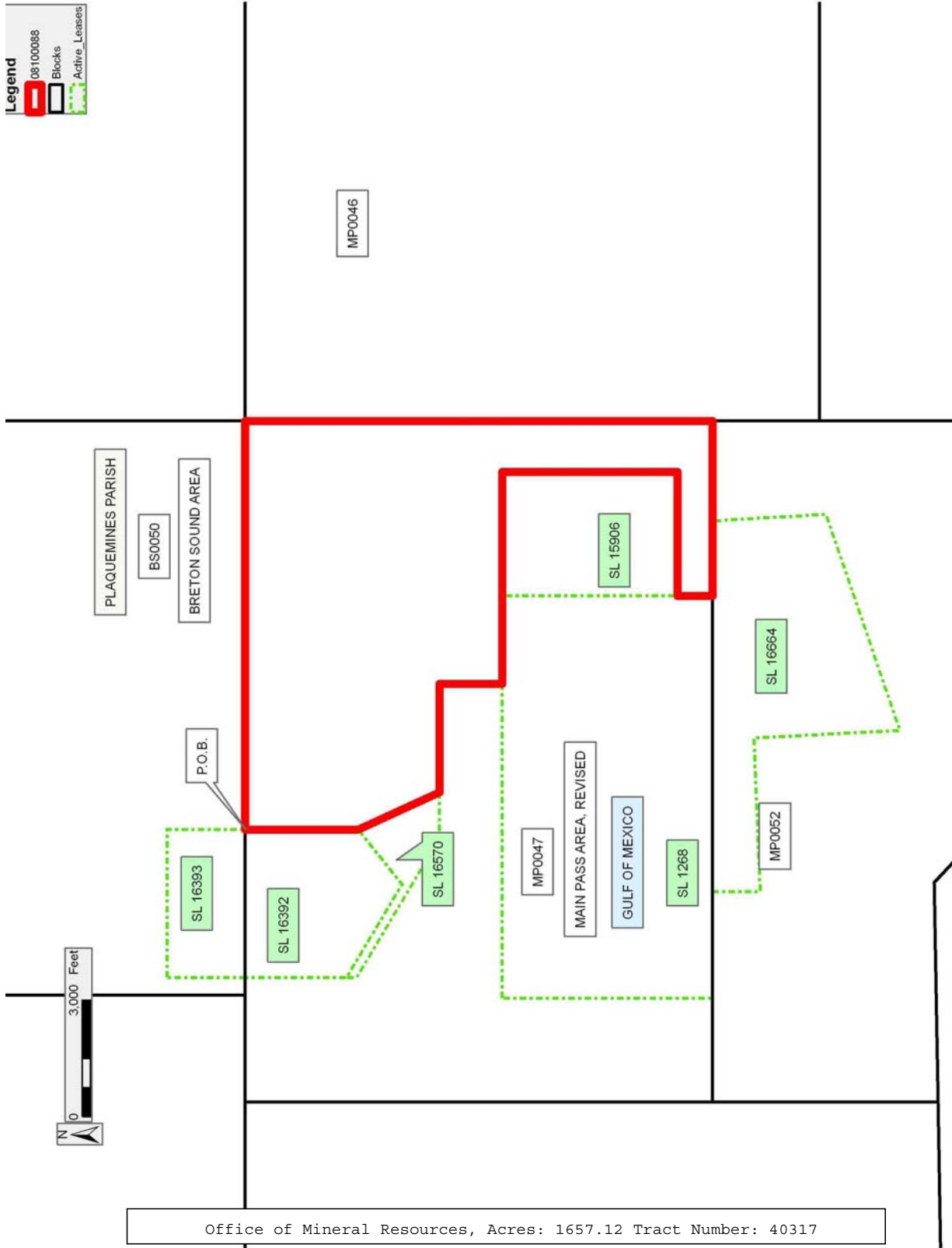
NOTE: The State of Louisiana does hereby reserve, and this lease shall be subject to, the imprescriptible right of surface use in the nature of a servitude in favor of the Department of Natural Resources, including its Offices and Commissions, for the sole purpose of implementing, constructing, servicing and maintaining approved coastal zone management and/or restoration projects. Utilization of any and all rights derived under this lease by the mineral lessee, its agents, successors or assigns, shall not interfere with nor hinder the reasonable surface use by the Department of Natural Resources, its Offices or Commissions, as herein above reserved.

Applicant: HAROLD J. ANDERSON, INC.

Bidder	Cash Payment	Price/Acre	Rental	Oil	Gas	Other

Legend

-  08100088
-  Blocks
-  Active_Leases



TRACT 40318 - Portion of Block 47, Main Pass Area, Revised, Plaquemines Parish, Louisiana

All of the lands now or formerly constituting the beds and bottoms of all water bodies of every nature and description as to which title is vested in the State of Louisiana, together with all islands arising therein and other lands formed by accretion or by reliction, where allowed by law, excepting tax adjudicated lands, and not presently under mineral lease on October 8, 2008, situated in Plaquemines Parish, Louisiana, and more particularly described as follows: Beginning at the Northwest corner of Block 47, Main Pass Area, Revised, having Coordinates of X = 2,647,350.00 and Y = 278,080.00; thence East 3,200.00 feet along the North line of said Block 47 to the Northwest corner of State Lease No. 16392 having Coordinates of X = 2,650,550.00 and Y = 278,080.00; thence South 2,600.00 feet along the Western boundary of said State Lease No. 16392 to its Southwest corner also being the Northwest corner of State Lease No. 16570, as amended, having Coordinates of X = 2,650,550.00 and Y = 275,480.00; thence along the boundary of said State Lease No. 16570 the following courses: South 258.57 feet; South 59 degrees 15 minutes 06 seconds East 4,168.83 feet and East 1,177.47 feet to its Southeast corner having Coordinates of X = 2,655,310.25 and Y = 273,090.04; thence East 2,789.75 feet to a point having Coordinates of X = 2,658,100.00 and Y = 273,090.04; thence South 1,610.04 feet to a point on the Northern boundary of State Lease No. 1268, as amended, having Coordinates of X = 2,658,100.00 and Y = 271,480.00; thence along the boundary of said State Lease No. 1268 the following courses: West 8,075.00 feet and South 5,400.00 feet to its Southwest corner, also being a point on the South line of said Block 47 having Coordinates of X = 2,650,025.00 and Y = 266,080.00; thence West 2,675.00 feet along the South line of said Block 47 to its Southwest corner having Coordinates of X = 2,647,350.00 and Y = 266,080.00; thence North 12,000.00 feet along the West line of said Block 47 to the point of beginning, containing approximately **1,183.17 acres**, all as more particularly outlined on a plat on file in the Office of Mineral Resources, Department of Natural Resources. All bearings, distances and coordinates are based on Louisiana Coordinate System of 1927, (North or South Zone), where applicable.

NOTE: The above description of the Tract nominated for lease has been provided and corrected, where required, exclusively by the nomination party. Any mineral lease selected from this Tract and awarded by the Louisiana State Mineral Board shall be without warranty of any kind, either express, implied, or statutory, including, but not limited to, the implied warranties of merchantability and fitness for a particular purpose. Should the mineral lease awarded by the Louisiana State Mineral Board be subsequently modified, cancelled or abrogated due to the existence of conflicting leases, operating agreements, private claims or other future obligations or conditions which may affect all or any portion of the leased Tract, it shall not relieve the Lessee of the obligation to pay any bonus due thereon to the Louisiana State Mineral Board, nor shall the Louisiana State Mineral Board be obligated to refund any consideration

paid by the Lessor prior to such modification, cancellation, or abrogation, including, but not limited to, bonuses, rentals and royalties.

NOTE: The State of Louisiana does hereby reserve, and this lease shall be subject to, the imprescriptible right of surface use in the nature of a servitude in favor of the Department of Natural Resources, including its Offices and Commissions, for the sole purpose of implementing, constructing, servicing and maintaining approved coastal zone management and/or restoration projects. Utilization of any and all rights derived under this lease by the mineral lessee, its agents, successors or assigns, shall not interfere with nor hinder the reasonable surface use by the Department of Natural Resources, its Offices or Commissions, as herein above reserved.

Applicant: HAROLD J. ANDERSON, INC.

Bidder	Cash Payment	Price/Acre	Rental	Oil	Gas	Other

Legend

- 08100089
- Blocks
- Active_Leases

PLAQUEMINES PARISH
BRETON SOUND AREA

BS00050

MP00047

SL 16393

SL 16392

SL 16570

SL 1268

SL 19489

P.O.B.

MAIN PASS AREA, REVISED

GULF OF MEXICO

MP00048



Office of Mineral Resources, Acres: 1183.17 Tract Number: 40318

TRACT 40319 - Portion of Blocks 45, and 46, Main Pass Area, Revised, Plaquemines Parish, Louisiana

All of the lands now or formerly constituting the beds and bottoms of all water bodies of every nature and description as to which title is vested in the State of Louisiana, together with all islands arising therein and other lands formed by accretion or by reliction, where allowed by law, excepting tax adjudicated lands, and not presently under mineral lease on October 8, 2008, situated in Plaquemines Parish, Louisiana, and more particularly described as follows: Beginning at a point on the West line of Block 45, Main Pass Area, Revised, also being the Southwest corner of State Lease No. 17053, as amended, having Coordinates of X = 2,679,600.00 and Y = 275,734.00; thence East 393.53 feet along the South boundary of said State Lease No. 17053 to a point on the Louisiana Coastline, as decreed by the Supreme Court of the United States, as determined by a Special Master appointed therein, in litigation styled *United States v. State of Louisiana et al No. 9 Original*, in 1975, having Coordinates of X = 2,679,993.53 and Y = 275,734.00; thence Southeasterly on a straight line along said Louisiana Coastline to a point on the South line of said Block 45 having Coordinates of X = 2,681,319.18 and Y = 263,330.00; thence West 6,622.84 feet to a point on the South line of Block 46, Main Pass Area, Revised, also being the Southeast corner of State Lease No. 16663 having Coordinates of X = 2,674,696.34 and Y = 263,330.00; thence along the boundary of said State Lease No. 16663 the following courses: North 27 degrees 02 minutes 48 seconds East 1,373.74 feet and North 13 degrees 51 minutes 18 seconds West 190.83 feet to a point having Coordinates of X = 2,675,275.30 and Y = 264,738.78; thence North 63 degrees 27 minutes 24 seconds East 11.11 feet to a point on the Southern boundary of State Lease No. 2726 as amended, having Coordinates of X = 2,675,285.24 and Y = 264,743.75; thence along the boundary of said State Lease No. 2726 the following courses: North 74 degrees 03 minutes 03 seconds East 400.00 feet; North 48 degrees 31 minutes 03 seconds East 461.00 feet; North 42 degrees 29 minutes 03 seconds East 563.00 feet; North 32 degrees 46 minutes 03 seconds East 867.99 feet; North 45 degrees 00 minutes 04 seconds East 240.00 feet; North 72 degrees 54 minutes 03 seconds East 272.00 feet; South 83 degrees 00 minutes 57 seconds East 247.00 feet; North 83 degrees 11 minutes 03 seconds East 337.00 feet; North 60 degrees 15 minutes 03 seconds East 403.00 feet; North 61 degrees 23 minutes 03 seconds East 877.00 feet and North 68 degrees 41 minutes 03 seconds East 650.00 feet to its Easternmost Southeast corner, also being a point on the West line of said Block 45 having Coordinates of X = 2,679,600.00 and Y = 267,420.00; thence North 8,314.00 feet along the West line of said Block 45 to the point of beginning, containing approximately **600.75 acres**, all as more particularly outlined on a plat on file in the Office of Mineral Resources, Department of Natural Resources. All bearings, distances and coordinates are based on Louisiana Coordinate System of 1927, (North or South Zone), where applicable.

NOTE: The above description of the Tract nominated for lease has been provided and corrected, where required, exclusively by the nomination




party. Any mineral lease selected from this Tract and awarded by the Louisiana State Mineral Board shall be without warranty of any kind, either express, implied, or statutory, including, but not limited to, the implied warranties of merchantability and fitness for a particular purpose. Should the mineral lease awarded by the Louisiana State Mineral Board be subsequently modified, cancelled or abrogated due to the existence of conflicting leases, operating agreements, private claims or other future obligations or conditions which may affect all or any portion of the leased Tract, it shall not relieve the Lessee of the obligation to pay any bonus due thereon to the Louisiana State Mineral Board, nor shall the Louisiana State Mineral Board be obligated to refund any consideration paid by the Lessor prior to such modification, cancellation, or abrogation, including, but not limited to, bonuses, rentals and royalties.

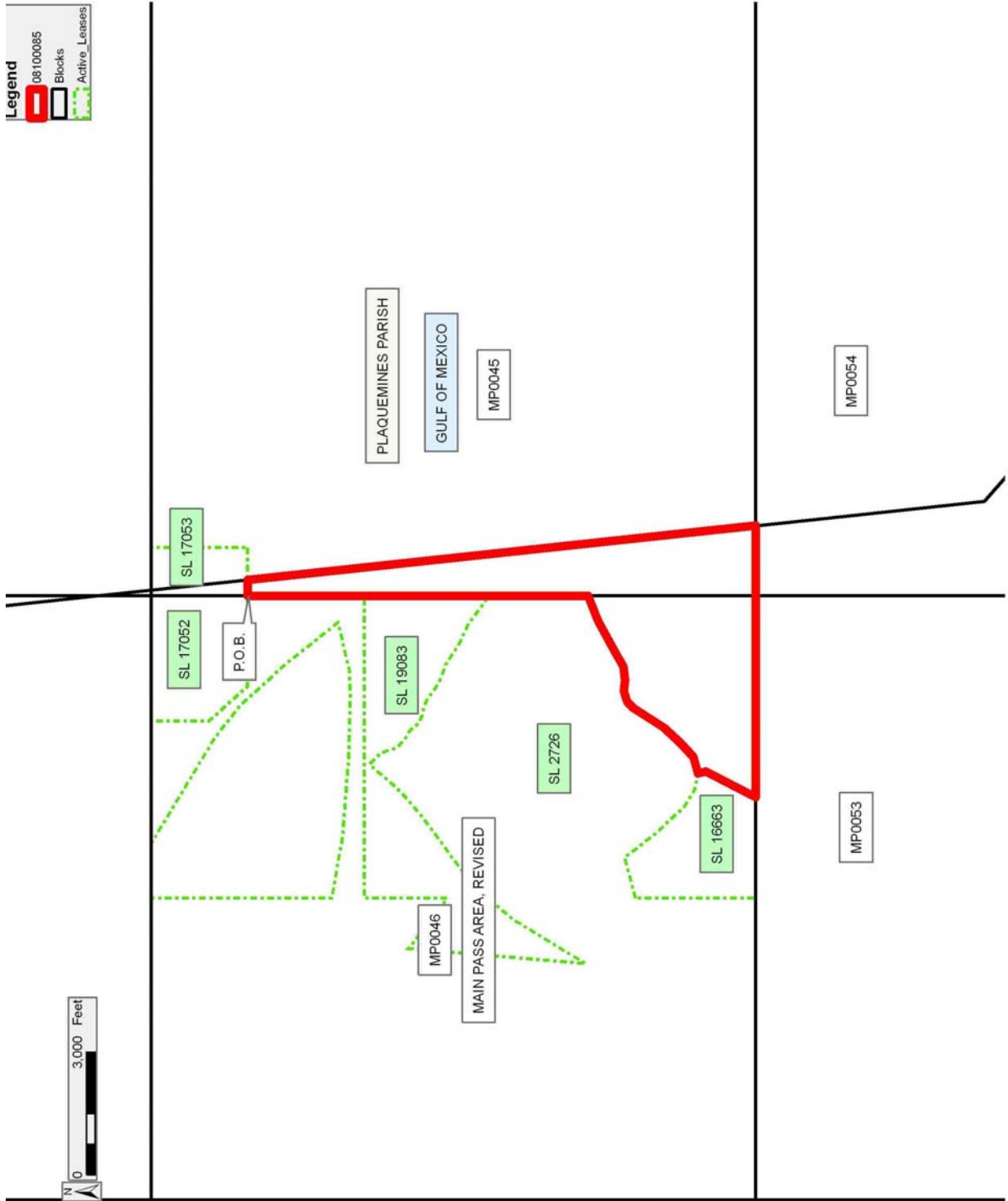
NOTE: The State of Louisiana does hereby reserve, and this lease shall be subject to, the imprescriptible right of surface use in the nature of a servitude in favor of the Department of Natural Resources, including its Offices and Commissions, for the sole purpose of implementing, constructing, servicing and maintaining approved coastal zone management and/or restoration projects. Utilization of any and all rights derived under this lease by the mineral lessee, its agents, successors or assigns, shall not interfere with nor hinder the reasonable surface use by the Department of Natural Resources, its Offices or Commissions, as herein above reserved.

Applicant: HAROLD J. ANDERSON, INC.

Bidder	Cash Payment	Price/Acre	Rental	Oil	Gas	Other

Legend

-  08100085
-  Blocks
-  Active_Leases



Office of Mineral Resources, Acres: 600.75 Tract Number: 40319