

TRACT 40300 - Lafourche and Terrebonne Parishes, Louisiana

All of the lands now or formerly constituting the beds and bottoms of all water bodies of every nature and description as to which title is vested in the State of Louisiana, together with all islands arising therein and other lands formed by accretion or by reliction, where allowed by law, excepting tax adjudicated lands, and not presently under mineral lease on October 8, 2008, situated in Lafourche and Terrebonne Parishes, Louisiana, and more particularly described as follows: Beginning at a Point being the Northeast corner of State Lease No. 19699 having Coordinates of X = 2,257,400.00 and Y = 310,719.75; thence North 88 degrees 44 minutes 10 seconds East 9,046.94 feet to a point having Coordinates of X = 2,266,444.74 and Y = 310,919.28; thence South 00 degrees 59 minutes 40 seconds East approximately 7,860 feet to a point on the boundary of Pointe Aux Chenes State Wildlife Management Area; thence Westerly, Southerly, Easterly, Southerly, Easterly, Southerly, Easterly, Northerly, Easterly, and Southerly, to a point that intersects a line that bears North 00 degrees 42 minutes 49 seconds West from a point having a coordinate of X = 2,266,759.48 and Y = 295,039.63; thence South 00 degrees 42 minutes 49 seconds East approximately 2,750 feet to a point having Coordinates of X = 2,266,759.48 and Y = 295,039.63; thence South 89 degrees 17 minutes 11 seconds West approximately 4,067 feet to a point on the said boundary of Pointe Aux Chenes State Wildlife Management Area; thence Northerly, Easterly, Northwesterly, Southerly, Westerly, Southerly, Westerly and Northerly, along the said boundary of Pointe Aux Chenes State Wildlife Management Area to a point that intersects a line that bears South 01 degrees 22 minutes 36 seconds East with a midpoint coordinate of X = 2,257,335.83 and Y = 298,192.91; thence North 01 degrees 22 minutes 36 seconds West approximately 3,998 feet to a point on the said boundary of Pointe Aux Chenes State Wildlife Management Area; thence Northerly and Westerly along the said boundary of Pointe Aux Chenes State Wildlife Management Area to a point that intersects a line that bears North 88 degrees 20 minutes 50 seconds East from a point having Coordinates of X = 2,250,577.51 and Y = 301,302.82; thence South 88 degrees 20 minutes 50 seconds West approximately 5,320 feet to a point having Coordinates of X = 2,250,577.51 and Y = 301,302.82; thence North 01 degrees 39 minutes 09 seconds West 2,526.73 feet to a point having Coordinates of X = 2,250,504.64 and Y = 303,828.50; thence North 33 degrees 00 minutes 53 seconds East 1,993.37 feet to a point having Coordinates of X = 2,251,590.73 and Y = 305,500.00; thence East 5,809.27 feet to a point having Coordinates of X = 2,257,400.00 and Y = 305,500.00; thence North 1,615.00 feet to the Southeast corner of said State Lease No. 19699; thence North 3,604.75 feet to the point of beginning, **LESS AND EXCEPT** that portion, if any, that lies within the Pointe Aux Chenes State Wildlife Management Area, containing approximately **11 acres**, all as more particularly outlined on a plat on file in the Office of Mineral Resources, Department of Natural Resources. All bearings, distances and coordinates are based on Louisiana Coordinate System of 1927, (North or South Zone), where applicable.

NOTE: The above description of the Tract nominated for lease has been provided and corrected, where required, exclusively by the nomination party. Any mineral lease selected from this Tract and awarded by the Louisiana State Mineral Board shall be without warranty of any kind, either express, implied, or statutory, including, but not limited to, the implied warranties of merchantability and fitness for a particular purpose. Should the mineral lease awarded by the Louisiana State Mineral Board be subsequently modified, cancelled or abrogated due to the existence of conflicting leases, operating agreements, private claims or other future obligations or conditions which may affect all or any portion of the leased Tract, it shall not relieve the Lessee of the obligation to pay any bonus due thereon to the Louisiana State Mineral Board, nor shall the Louisiana State Mineral Board be obligated to refund any consideration paid by the Lessor prior to such modification, cancellation, or abrogation, including, but not limited to, bonuses, rentals and royalties.

NOTE: The State of Louisiana does hereby reserve, and this lease shall be subject to, the imprescriptible right of surface use in the nature of a servitude in favor of the Department of Natural Resources, including its Offices and Commissions, for the sole purpose of implementing, constructing, servicing and maintaining approved coastal zone management and/or restoration projects. Utilization of any and all rights derived under this lease by the mineral lessee, its agents, successors or assigns, shall not interfere with nor hinder the reasonable surface use by the Department of Natural Resources, its Offices or Commissions, as herein above reserved.

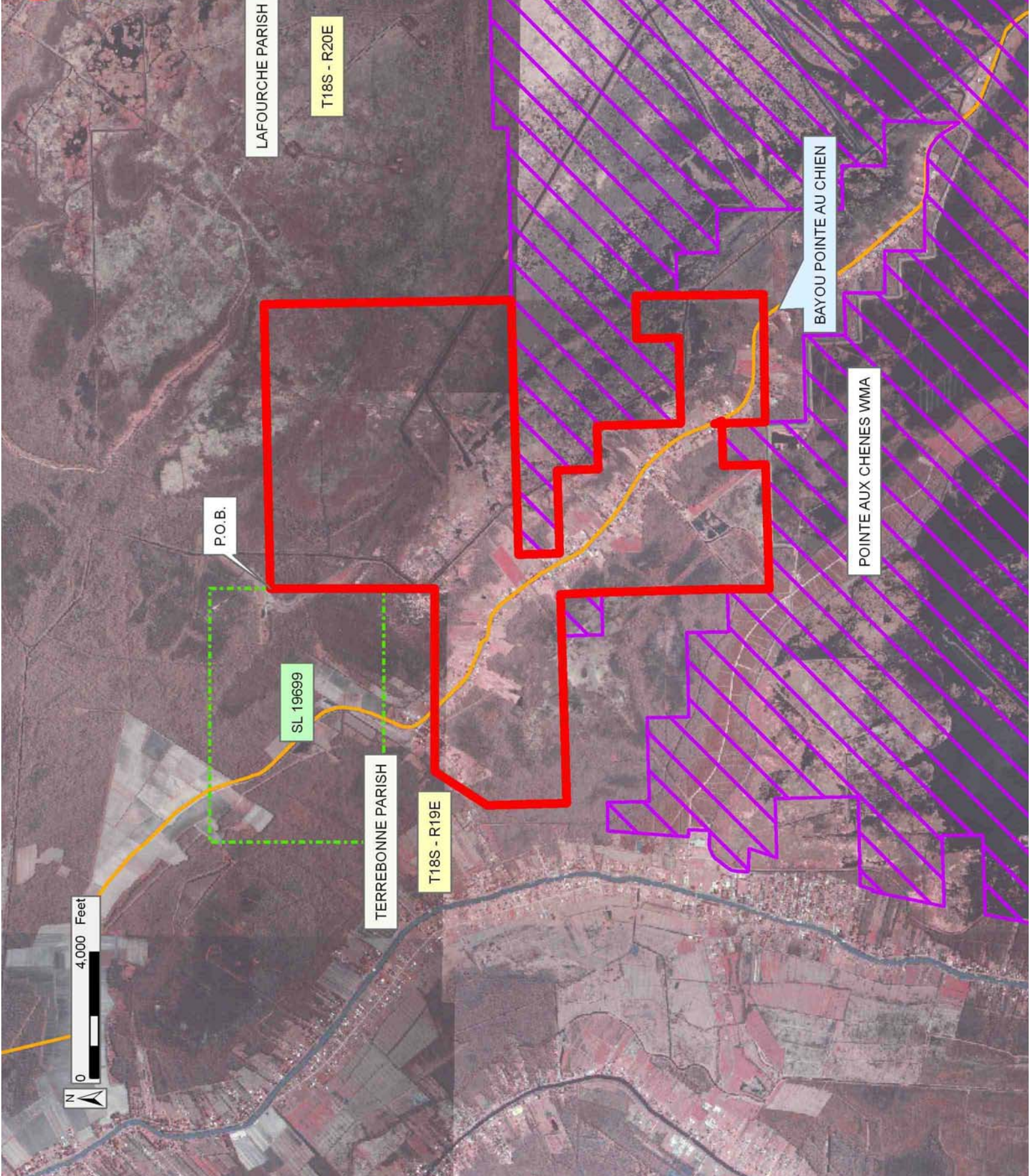
Applicant: STARKS OIL CORPORATION

Bidder	Cash Payment	Price/Acre	Rental	Oil	Gas	Other

Legend

- 08100217
- Wildlife
- Active_Leases
- Counties

DOQQ2004



TRACT 40301 - Jefferson and Lafourche Parishes, Louisiana

All of the lands now or formerly constituting the beds and bottoms of all water bodies of every nature and description as to which title is vested in the State of Louisiana, together with all islands arising therein and other lands formed by accretion or by reliction, where allowed by law, excepting tax adjudicated lands, and not presently under mineral lease on October 8, 2008, situated in Jefferson and Lafourche Parishes, Louisiana, and more particularly described as follows: Beginning at the Northeast corner of State Lease No. 19038 having Coordinates of X = 2,394,200.00 and Y = 298,900.00; thence North 6,307.46 feet to a point having Coordinates of X = 2,394,200.00 and Y = 305,207.46; thence East 7,395.65 feet to the Southernmost corner of State Lease No. 18727 having Coordinates of X = 2,401,595.65 and Y = 305,207.46; thence East 4,778.80 feet to a point having Coordinates of X = 2,406,374.45 and Y = 305,207.46; thence South 48 degrees 11 minutes 29 seconds East 8,449.41 feet to a point having Coordinates of X = 2,412,672.44 and Y = 299,574.71; thence South 6,862.08 feet to a point having Coordinates of X = 2,412,672.44 and Y = 292,712.63; thence West 18,472.44 feet to a point on the East boundary of State Lease No. 19040 having Coordinates of X = 2,394,200.00 and Y = 292,712.63; thence North 3,187.37 feet along the East boundary of said State Lease No. 19040 to its Northeast corner, also being the Southeast corner of said State Lease No. 19038 having Coordinates of X = 2,394,200.00 and Y = 295,900.00; thence North 3,000.00 feet along the East boundary of said State Lease No. 19038 to the point of beginning, containing approximately **2,480 acres**, all as more particularly outlined on a plat on file in the Office of Mineral Resources, Department of Natural Resources. All bearings, distances and coordinates are based on Louisiana Coordinate System of 1927, (North or South Zone), where applicable.

NOTE: The above description of the Tract nominated for lease has been provided and corrected, where required, exclusively by the nomination party. Any mineral lease selected from this Tract and awarded by the Louisiana State Mineral Board shall be without warranty of any kind, either express, implied, or statutory, including, but not limited to, the implied warranties of merchantability and fitness for a particular purpose. Should the mineral lease awarded by the Louisiana State Mineral Board be subsequently modified, cancelled or abrogated due to the existence of conflicting leases, operating agreements, private claims or other future obligations or conditions which may affect all or any portion of the leased Tract, it shall not relieve the Lessee of the obligation to pay any bonus due thereon to the Louisiana State Mineral Board, nor shall the Louisiana State Mineral Board be obligated to refund any consideration paid by the Lessor prior to such modification, cancellation, or abrogation, including, but not limited to, bonuses, rentals and royalties.

NOTE: The State of Louisiana does hereby reserve, and this lease shall be subject to, the imprescriptible right of surface use in the nature of a servitude in favor of the Department of Natural Resources, including its Offices and Commissions, for the sole purpose of implementing,

constructing, servicing and maintaining approved coastal zone management and/or restoration projects. Utilization of any and all rights derived under this lease by the mineral lessee, its agents, successors or assigns, shall not interfere with nor hinder the reasonable surface use by the Department of Natural Resources, its Offices or Commissions, as herein above reserved.

NOTE: The Department of Wildlife and Fisheries has designated certain areas in the coastal waters of the State of Louisiana as Oyster Seed Bed Areas. The exact location of those Seed Bed Areas must be obtained from the Department of Wildlife and Fisheries and any work done under a mineral lease from the State of Louisiana may necessarily be conducted in conformity with the rules and regulations promulgated by the said Department of Wildlife and Fisheries for Oyster Seed Bed Areas.

Applicant: LESLIE M. COOPER

Bidder	Cash Payment	Price/Acre	Rental	Oil	Gas	Other

Legend

- 08100030
- Active_Leases
- DOQQ2004



TRACT 40302 - Portion of Blocks 51, and 52, Breton Sound Area, Plaquemines Parish, Louisiana

All of the lands now or formerly constituting the beds and bottoms of all water bodies of every nature and description as to which title is vested in the State of Louisiana, together with all islands arising therein and other lands formed by accretion or by reliction, where allowed by law, excepting tax adjudicated lands, and not presently under mineral lease on October 8, 2008, situated in Plaquemines Parish, Louisiana, and more particularly described as follows: Beginning at point on the North line of Block 51, Breton Sound Area, having Coordinates of X = 2,672,225.00 and Y = 292,830.00; thence East 5,941.42 feet along the North line of said Block 51 to a point on the Louisiana Coastline, as decreed by the Supreme Court of the United States, as determined by a Special Master appointed therein, in litigation styled *United States v. State of Louisiana et al No. 9 Original*, in 1975, having Coordinates of X = 2,678,166.42 and Y = 292,830.00; thence Southeasterly on a straight line along said Louisiana Coastline to the Northwest corner of State Lease No. 18549 having Coordinates of X = 2,678,270.74 and Y = 291,853.93; thence Southeasterly on a straight line along said Louisiana Coastline and the Western boundary of said State Lease No. 18549 to its Southwest corner, also being the Northwest corner of State Lease No. 19156 having Coordinates of X = 2,678,737.27 and Y = 287,488.64; thence Southeasterly on a straight line along said Louisiana Coastline and the Western boundary of said State Lease No. 19156 to a point on the South line of Block 52, Breton Sound Area, having Coordinates of X = 2,679,742.80 and Y = 278,080.00; thence West 142.80 feet along the South line of said Block 52 and said Block 51 to the Southeast corner of State Lease No. 17244 having Coordinates of X = 2,679,600.00 and Y = 278,080.00; thence along the boundary of said State Lease No. 17244 the following courses: North 33 degrees 05 minutes 49 seconds West 1,607.88 feet; West 2,053.00 feet and South 1,347.00 feet to its Southwest corner also being a point on the South line of said Block 51 having Coordinates of X = 2,676,669.00 and Y = 278,080.00; thence West 4,444.00 feet along the South line of said Block 51 to a point having Coordinates of X = 2,672,225.00 and Y = 278,080.00; thence North 5,931.32 feet to a point on the Southern boundary of State Lease No. 16890 having Coordinates of X = 2,672,225.00 and Y = 284,011.32; thence along the boundary of said State Lease No. 16890 the following courses: South 87 degrees 28 minutes 59 seconds East 485.47 feet; North 31 degrees 53 minutes 54 seconds East 2,838.68 feet; North 01 degrees 37 minutes 30 seconds West 1,730.70 feet; West 1,289.52 feet and South 73 degrees 14 minutes 30 seconds West 675.07 feet to a point on its Northern boundary having Coordinates of X = 2,672,225.00 and Y = 287,935.35; thence North 4,894.65 feet to the point of beginning, containing approximately **2,057.05 acres**, all as more particularly outlined on a plat on file in the Office of Mineral Resources, Department of Natural Resources. All bearings, distances and coordinates are based on Louisiana Coordinate System of 1927, (North or South Zone), where applicable.

NOTE: The above description of the Tract nominated for lease has been provided and corrected, where required, exclusively by the nomination party. Any mineral lease selected from this Tract and awarded by the Louisiana State Mineral Board shall be without warranty of any kind, either express, implied, or statutory, including, but not limited to, the implied warranties of merchantability and fitness for a particular purpose. Should the mineral lease awarded by the Louisiana State Mineral Board be subsequently modified, cancelled or abrogated due to the existence of conflicting leases, operating agreements, private claims or other future obligations or conditions which may affect all or any portion of the leased Tract, it shall not relieve the Lessee of the obligation to pay any bonus due thereon to the Louisiana State Mineral Board, nor shall the Louisiana State Mineral Board be obligated to refund any consideration paid by the Lessor prior to such modification, cancellation, or abrogation, including, but not limited to, bonuses, rentals and royalties.

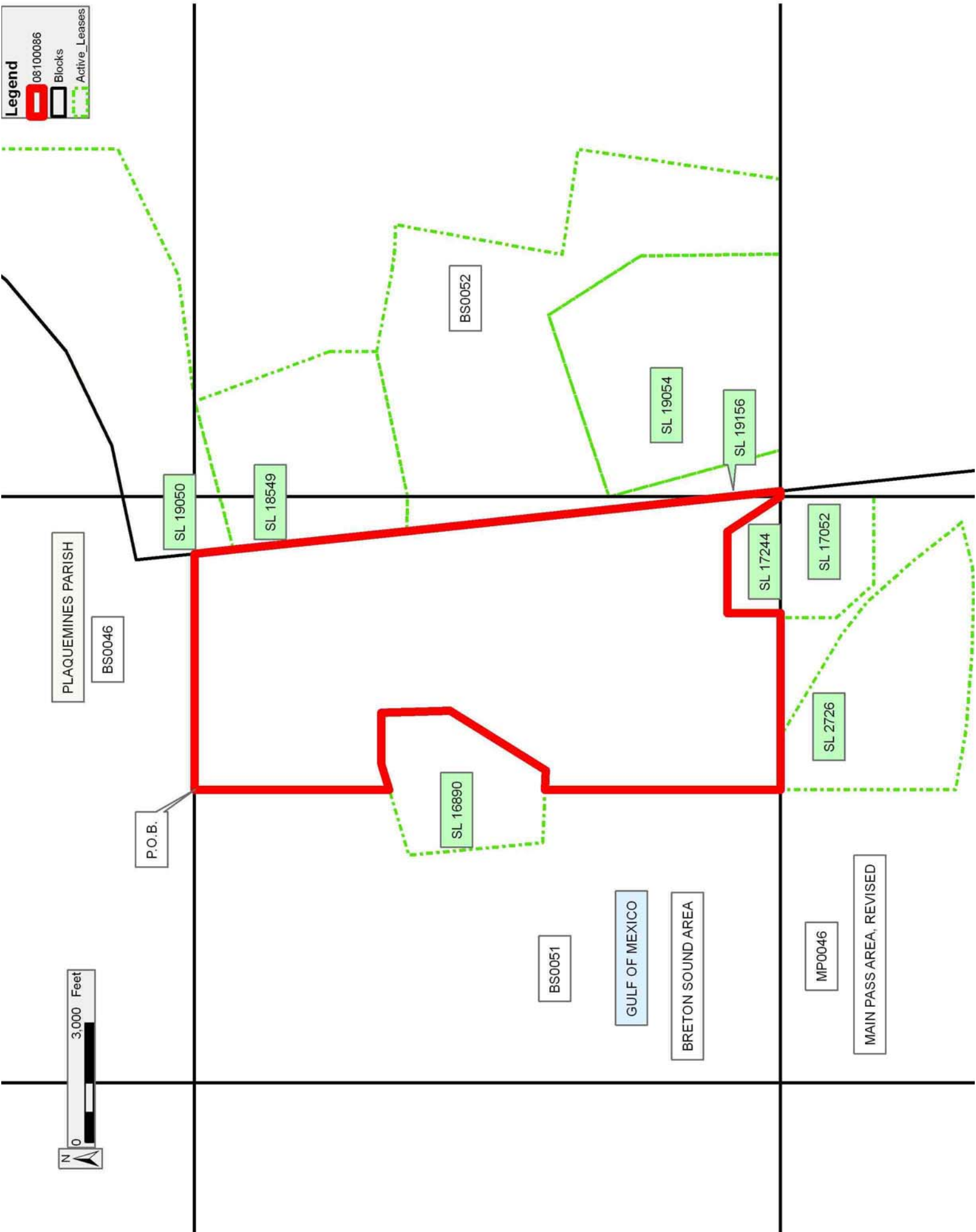
NOTE: The State of Louisiana does hereby reserve, and this lease shall be subject to, the imprescriptible right of surface use in the nature of a servitude in favor of the Department of Natural Resources, including its Offices and Commissions, for the sole purpose of implementing, constructing, servicing and maintaining approved coastal zone management and/or restoration projects. Utilization of any and all rights derived under this lease by the mineral lessee, its agents, successors or assigns, shall not interfere with nor hinder the reasonable surface use by the Department of Natural Resources, its Offices or Commissions, as herein above reserved.

Applicant: HAROLD J. ANDERSON, INC.

Bidder	Cash Payment	Price/Acre	Rental	Oil	Gas	Other

Legend

- 08100086
- Blocks
- Active_Leases



TRACT 40303 - Iberia Parish, Louisiana

All of the lands now or formerly constituting the beds and bottoms of all water bodies of every nature and description as to which title is vested in the State of Louisiana, together with all islands arising therein and other lands formed by accretion or by reliction, where allowed by law, excepting tax adjudicated lands, and not presently under mineral lease on October 8, 2008, situated in Iberia Parish, Louisiana, and more particularly described as follows: Beginning at the Southwest corner of State Lease No. 19730, also being the Northwest corner of State Lease No. 19381 having Coordinates of X = 1,867,960.00 and Y = 304,175.00; thence South 3,155.52 feet along the West boundary of said State Lease No. 19381 to a point having Coordinates of X = 1,867,960.00 and Y = 301,019.48; thence West approximately 7,208 feet to a point on the Marsh Island Wildlife Refuge having a Coordinate of Y = 301,019.48; thence Northwesterly and Northerly along the meanders of said Marsh Island Wildlife Refuge to a point of intersection with an East-West line having a Coordinate of Y = 304,175.00; thence East approximately 7,811 feet along said line to the point of beginning, **LESS AND EXCEPT** that portion, if any, of the Marsh Island Wildlife Refuge that may lie within the above described tract, containing approximately **552 acres**, all as more particularly outlined on a plat on file in the Office of Mineral Resources, Department of Natural Resources. All bearings, distances and coordinates are based on Louisiana Coordinate System of 1927, (North or South Zone), where applicable.

NOTE: The above description of the Tract nominated for lease has been provided and corrected, where required, exclusively by the nomination party. Any mineral lease selected from this Tract and awarded by the Louisiana State Mineral Board shall be without warranty of any kind, either express, implied, or statutory, including, but not limited to, the implied warranties of merchantability and fitness for a particular purpose. Should the mineral lease awarded by the Louisiana State Mineral Board be subsequently modified, cancelled or abrogated due to the existence of conflicting leases, operating agreements, private claims or other future obligations or conditions which may affect all or any portion of the leased Tract, it shall not relieve the Lessee of the obligation to pay any bonus due thereon to the Louisiana State Mineral Board, nor shall the Louisiana State Mineral Board be obligated to refund any consideration paid by the Lessor prior to such modification, cancellation, or abrogation, including, but not limited to, bonuses, rentals and royalties.

NOTE: The Office of Mineral Resources will require a minimum bonus of \$350 per acre and a minimum royalty of 25%.

NOTE: The above described tract may be in the vicinity of existing shell reefs where drilling and dredging operations must be conducted in strict conformity with the regulations adopted by the Louisiana Department of Wildlife and Fisheries and/or the U.S. Corps of Engineers, U.S. Army.

NOTE: The State of Louisiana does hereby reserve, and this lease shall be subject to, the imprescriptible right of surface use in the nature of a servitude in favor of the Department of Natural Resources, including its Offices and Commissions, for the sole purpose of implementing, constructing, servicing and maintaining approved coastal zone management and/or restoration projects. Utilization of any and all rights derived under this lease by the mineral lessee, its agents, successors or assigns, shall not interfere with nor hinder the reasonable surface use by the Department of Natural Resources, its Offices or Commissions, as herein above reserved.




NOTE: The Department of Wildlife and Fisheries has designated certain areas in the coastal waters of the State of Louisiana as Oyster Seed Bed Areas. The exact location of those Seed Bed Areas must be obtained from the Department of Wildlife and Fisheries and any work done under a mineral lease from the State of Louisiana may necessarily be conducted in conformity with the rules and regulations promulgated by the said Department of Wildlife and Fisheries for Oyster Seed Bed Areas.

NOTE: All or a portion of this Tract lies within one nautical mile of the boundary of the Russell Sage or Marsh Island Wildlife Refuge and Game Preserve. Any activities connected with this lease conducted within this Tract which may pose potential environmental impacts to the said Wildlife Refuge and Game Preserve should be coordinated with the Louisiana Department of Wildlife and Fisheries.

Applicant: PATRICK L. DONOHUE PETROLEUM PROPERTIES, INC.

Bidder	Cash Payment	Price/Acre	Rental	Oil	Gas	Other

Legend

-  08100021
-  Wildlife
-  Active_Leases

IBERIA PARISH

VERMILION BAY

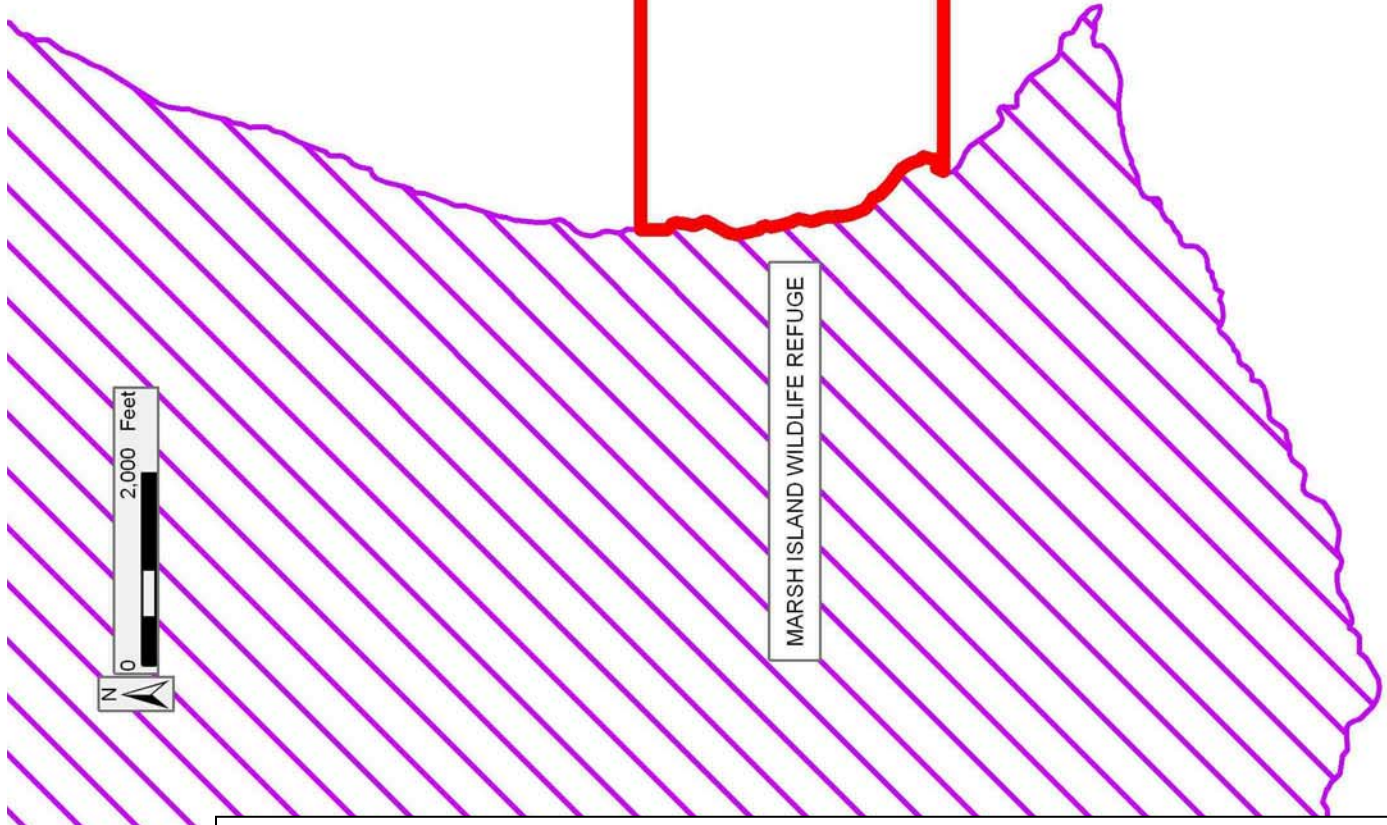
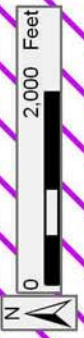
SL 19730

P.O.B.

SL 19381

MARSH ISLAND WILDLIFE REFUGE

EUGENE ISLAND AREA, REVISED



TRACT 40304 - Portion of Block 50, Breton Sound Area, Plaquemines Parish, Louisiana

All of the lands now or formerly constituting the beds and bottoms of all water bodies of every nature and description as to which title is vested in the State of Louisiana, together with all islands arising therein and other lands formed by accretion or by reliction, where allowed by law, excepting tax adjudicated lands, and not presently under mineral lease on October 8, 2008, situated in Plaquemines Parish, Louisiana, and more particularly described as follows: Beginning at the Northwest corner of Block 50, Breton Sound Area, having Coordinates of X = 2,650,100.00 and Y = 292,830.00; thence East 7,375.00 feet along the North line of said Block 50 to a point having Coordinates of X = 2,657,475.00 and Y = 292,830.00; thence South 14,750.00 feet to a point on the South line of said Block 50 having Coordinates of X = 2,657,475.00 and Y = 278,080.00; thence West 3,125.00 feet along the South line of said Block 50 to the Southeast corner of State Lease No. 16393 having Coordinates of X = 2,654,350.00 and Y = 278,080.00; thence along the boundary of said State Lease No. 16393 the following courses: North 2,000.00 feet, West 3,800.00 feet and South 2,000.00 feet to its Southwest corner also being a point on the South line of said Block 50 having Coordinates of X = 2,650,550.00 and Y = 278,080.00; thence West 450.00 feet along the South line of said Block 50 to its Southwest corner having Coordinates of X = 2,650,100.00 and Y = 278,080.00; thence North 14,750.00 feet along the West line of said Block 50 to the point of beginning, containing approximately **2,322.81 acres**, all as more particularly outlined on a plat on file in the Office of Mineral Resources, Department of Natural Resources. All bearings, distances and coordinates are based on Louisiana Coordinate System of 1927, (North or South Zone), where applicable.

NOTE: The above description of the Tract nominated for lease has been provided and corrected, where required, exclusively by the nomination party. Any mineral lease selected from this Tract and awarded by the Louisiana State Mineral Board shall be without warranty of any kind, either express, implied, or statutory, including, but not limited to, the implied warranties of merchantability and fitness for a particular purpose. Should the mineral lease awarded by the Louisiana State Mineral Board be subsequently modified, cancelled or abrogated due to the existence of conflicting leases, operating agreements, private claims or other future obligations or conditions which may affect all or any portion of the leased Tract, it shall not relieve the Lessee of the obligation to pay any bonus due thereon to the Louisiana State Mineral Board, nor shall the Louisiana State Mineral Board be obligated to refund any consideration paid by the Lessor prior to such modification, cancellation, or abrogation, including, but not limited to, bonuses, rentals and royalties.

NOTE: The State of Louisiana does hereby reserve, and this lease shall be subject to, the imprescriptible right of surface use in the nature of a servitude in favor of the Department of Natural Resources, including its Offices and Commissions, for the sole purpose of implementing,

constructing, servicing and maintaining approved coastal zone management and/or restoration projects. Utilization of any and all rights derived under this lease by the mineral lessee, its agents, successors or assigns, shall not interfere with nor hinder the reasonable surface use by the Department of Natural Resources, its Offices or Commissions, as herein above reserved.

Applicant: HAROLD J. ANDERSON, INC.

Bidder	Cash Payment	Price/Acre	Rental	Oil	Gas	Other

Legend

- 08100093
- Blocks
- Active_Leases



P.O.B.

PLAQUEMINES PARISH

GULF OF MEXICO

BS0047

BS0050

BRETON SOUND AREA

BS0049

SL 16393

SL 16392

MAIN PASS AREA, REVISED

MP0047

TRACT 40305 - Portion of Block 50, Breton Sound Area, Plaquemines Parish, Louisiana



All of the lands now or formerly constituting the beds and bottoms of all water bodies of every nature and description as to which title is vested in the State of Louisiana, together with all islands arising therein and other lands formed by accretion or by reliction, where allowed by law, excepting tax adjudicated lands, and not presently under mineral lease on October 8, 2008, situated in Plaquemines Parish, Louisiana, and more particularly described as follows: Beginning at a point on the North line of Block 50, Breton Sound Area, having Coordinates of X = 2,657,475.00 and Y = 292,830.00; thence East 7,375.00 feet along the North line of said Block 50 to its Northeast corner having Coordinates of X = 2,664,850.00 and Y = 292,830.00; thence South 14,750.00 feet along the West line of said Block 50 to its Southeast corner having Coordinates of X = 2,664,850.00 and Y = 278,080.00; thence West 7,375.00 feet along the South line of said Block 50 to a point having Coordinates of X = 2,657,475.00 and Y = 278,080.00; thence North 14,750.00 feet to the point of beginning, containing **2,497.27 acres**, all as more particularly outlined on a plat on file in the Office of Mineral Resources, Department of Natural Resources. All bearings, distances and coordinates are based on Louisiana Coordinate System of 1927, (North or South Zone), where applicable.

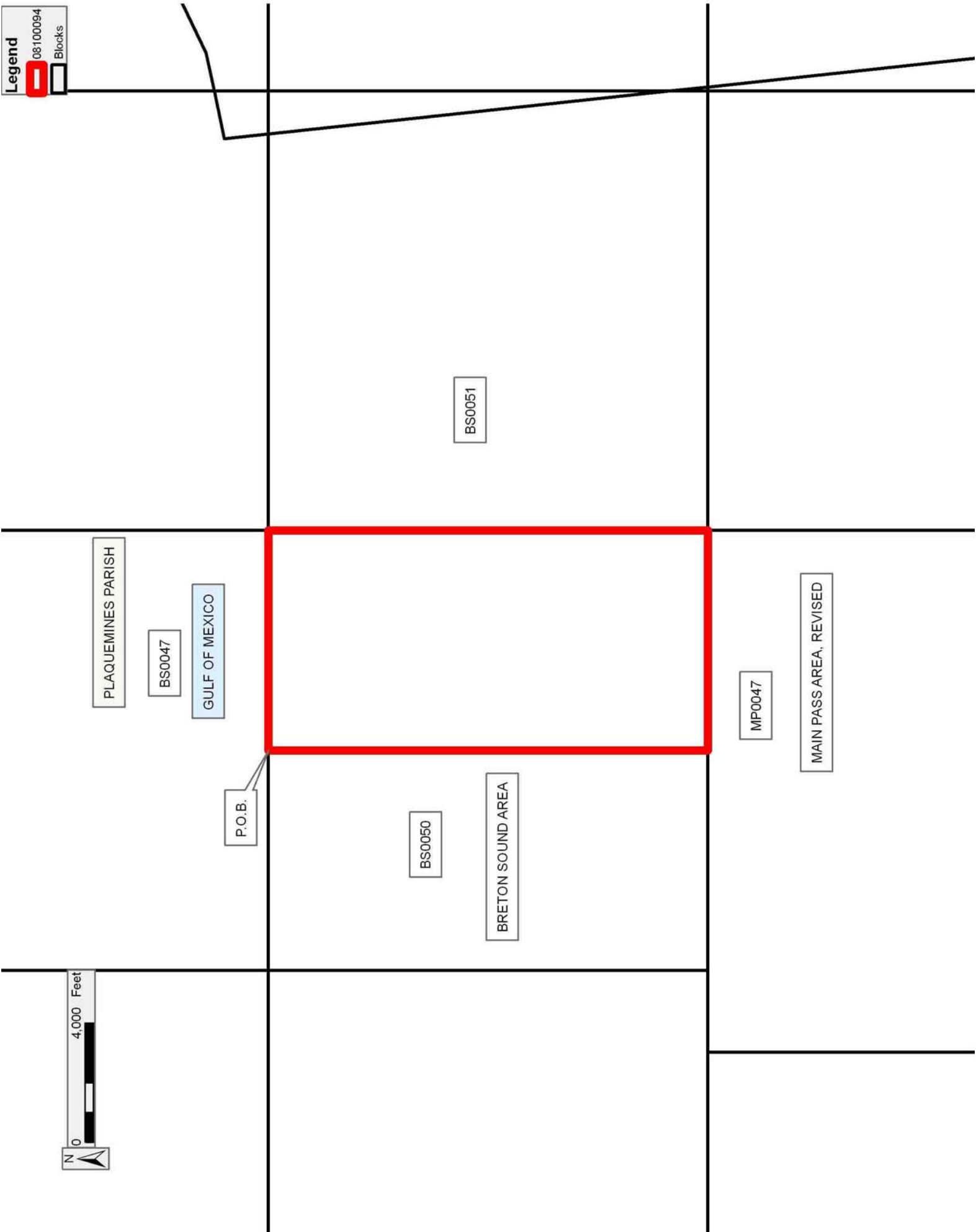
NOTE: The above description of the Tract nominated for lease has been provided and corrected, where required, exclusively by the nomination party. Any mineral lease selected from this Tract and awarded by the Louisiana State Mineral Board shall be without warranty of any kind, either express, implied, or statutory, including, but not limited to, the implied warranties of merchantability and fitness for a particular purpose. Should the mineral lease awarded by the Louisiana State Mineral Board be subsequently modified, cancelled or abrogated due to the existence of conflicting leases, operating agreements, private claims or other future obligations or conditions which may affect all or any portion of the leased Tract, it shall not relieve the Lessee of the obligation to pay any bonus due thereon to the Louisiana State Mineral Board, nor shall the Louisiana State Mineral Board be obligated to refund any consideration paid by the Lessor prior to such modification, cancellation, or abrogation, including, but not limited to, bonuses, rentals and royalties.

NOTE: The State of Louisiana does hereby reserve, and this lease shall be subject to, the imprescriptible right of surface use in the nature of a servitude in favor of the Department of Natural Resources, including its Offices and Commissions, for the sole purpose of implementing, constructing, servicing and maintaining approved coastal zone management and/or restoration projects. Utilization of any and all rights derived under this lease by the mineral lessee, its agents, successors or assigns, shall not interfere with nor hinder the reasonable surface use by the Department of Natural Resources, its Offices or Commissions, as herein above reserved.

Applicant: HAROLD J. ANDERSON, INC.

Bidder	Cash Payment	Price/Acre	Rental	Oil	Gas	Other

Legend
 08:100094
 Blocks



TRACT 40306 - Portion of Block 51, Breton Sound Area, Plaquemines Parish, Louisiana

All of the lands now or formerly constituting the beds and bottoms of all water bodies of every nature and description as to which title is vested in the State of Louisiana, together with all islands arising therein and other lands formed by accretion or by reliction, where allowed by law, excepting tax adjudicated lands, and not presently under mineral lease on October 8, 2008, situated in Plaquemines Parish, Louisiana, and more particularly described as follows: Beginning at the Northwest corner of Block 51, Breton Sound Area, having Coordinates of X = 2,664,850.00 and Y = 292,830.00; thence East 1,500.00 feet along the North line of said Block 51 to the Northwest corner of State Lease No. 19081 having Coordinates of X = 2,666,350.00 and Y = 292,830.00; thence along the boundary of said State Lease No. 19081 the following courses: South 19 degrees 39 minutes 14 seconds East 2,973.21 feet, East 1,700.00 feet and North 10 degrees 07 minutes 29 seconds West 2,844.29 feet to its Northeast corner also being a point on the North line of said Block 51 having Coordinates of X = 2,668,550.00 and Y = 292,830.00; thence East 3,675.00 feet along the North line of said Block 51 to a point having Coordinates of X = 2,672,225.00 and Y = 292,830.00; thence South 4,894.65 feet to a point on the Northern boundary of State Lease No. 16890 having Coordinates of X = 2,672,225.00 and Y = 287,935.35; thence along the boundary of said State Lease No. 16890 the following courses: South 73 degrees 14 minutes 30 seconds West 1,717.96 feet, South 05 degrees 15 minutes 21 seconds East 3,384.23 feet and South 87 degrees 28 minutes 59 seconds East 1,336.29 feet to a point on its Southern boundary having Coordinates of X = 2,672,225.00 and Y = 284,011.32; thence South 5,931.32 feet to a point on the South line of said Block 51 having Coordinates of X = 2,672,225.00 and Y = 278,080.00; thence West 7,375.00 feet along the South line of said Block 51 to its Southwest corner having Coordinates of X = 2,664,850.00 and Y = 278,080.00; thence North 14,750.00 feet along the West line of said Block 51 to the point of beginning, containing **2,246.40 acres**, all as more particularly outlined on a plat on file in the Office of Mineral Resources, Department of Natural Resources. All bearings, distances and coordinates are based on Louisiana Coordinate System of 1927, (North or South Zone), where applicable.

NOTE: The above description of the Tract nominated for lease has been provided and corrected, where required, exclusively by the nomination party. Any mineral lease selected from this Tract and awarded by the Louisiana State Mineral Board shall be without warranty of any kind, either express, implied, or statutory, including, but not limited to, the implied warranties of merchantability and fitness for a particular purpose. Should the mineral lease awarded by the Louisiana State Mineral Board be subsequently modified, cancelled or abrogated due to the existence of conflicting leases, operating agreements, private claims or other future obligations or conditions which may affect all or any portion of the leased Tract, it shall not relieve the Lessee of the obligation to pay any bonus due thereon to the Louisiana State Mineral Board, nor shall

the Louisiana State Mineral Board be obligated to refund any consideration paid by the Lessor prior to such modification, cancellation, or abrogation, including, but not limited to, bonuses, rentals and royalties.

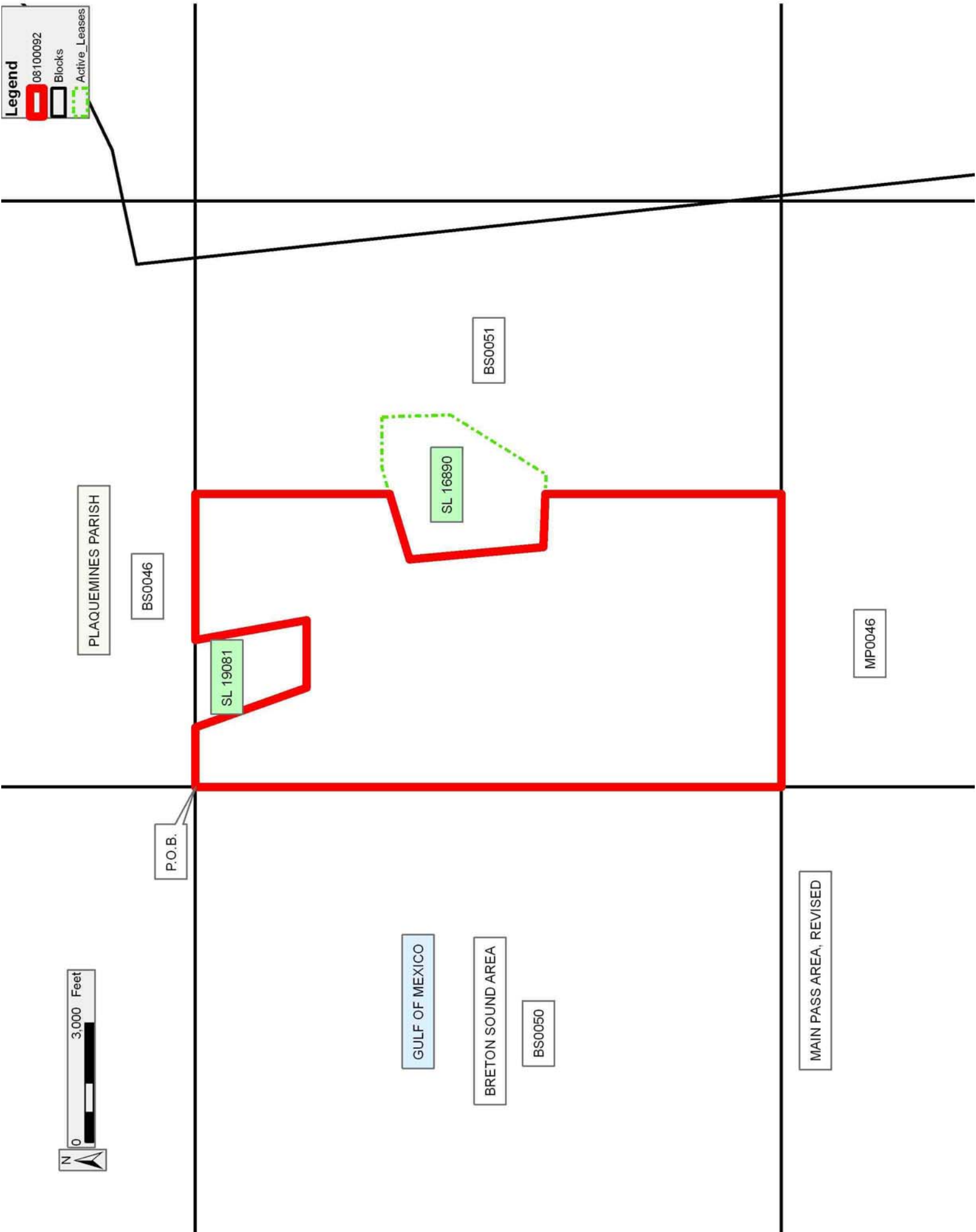
NOTE: The State of Louisiana does hereby reserve, and this lease shall be subject to, the imprescriptible right of surface use in the nature of a servitude in favor of the Department of Natural Resources, including its Offices and Commissions, for the sole purpose of implementing, constructing, servicing and maintaining approved coastal zone management and/or restoration projects. Utilization of any and all rights derived under this lease by the mineral lessee, its agents, successors or assigns, shall not interfere with nor hinder the reasonable surface use by the Department of Natural Resources, its Offices or Commissions, as herein above reserved.

Applicant: HAROLD J. ANDERSON, INC.

Bidder	Cash Payment	Price/Acre	Rental	Oil	Gas	Other

Legend

- 08100092
- Blocks
- Active_Leases



TRACT 40307 - Lafourche Parish, Louisiana

All of the lands now or formerly constituting the beds and bottoms of all water bodies of every nature and description as to which title is vested in the State of Louisiana, together with all islands arising therein and other lands formed by accretion or by reliction, where allowed by law, excepting tax adjudicated lands, and not presently under mineral lease on October 8, 2008, situated in Lafourche Parish, Louisiana, and more particularly described as follows: Beginning at a Point being the Northeast corner of State Lease No. 19701 having Coordinates of X = 2,317,995.62 and Y = 296,844.93; thence South 89 degrees 47 minutes 02 seconds East 11,304.08 feet to a point having Coordinates of X = 2,329,299.62 and Y = 296,802.30; thence South 17,349.66 feet to a point having Coordinates of X = 2,329,299.62 and Y = 279,452.64; thence West 1,925.26 feet to the Northeast corner of State Lease No. 19531 having Coordinates of X = 2,327,374.36 and Y = 279,452.64; thence West 5,785.74 feet along the Northern boundary of said State Lease No. 19531 to a point having Coordinates of X = 2,321,588.62 and Y = 279,452.64; thence North 11 degrees 40 minutes 20 seconds West 17,759.54 feet along the Eastern boundary of said State Lease No. 19701 to the point of beginning, (This lease includes only waterbottoms claimed and owned by the state and specifically excludes any land which the state may claim or own and to which the mineral rights are vested in the state), containing approximately **74 acres**, all as more particularly outlined on a plat on file in the Office of Mineral Resources, Department of Natural Resources. All bearings, distances and coordinates are based on Louisiana Coordinate System of 1927, (North or South Zone), where applicable.

NOTE: The above description of the Tract nominated for lease has been provided and corrected, where required, exclusively by the nomination party. Any mineral lease selected from this Tract and awarded by the Louisiana State Mineral Board shall be without warranty of any kind, either express, implied, or statutory, including, but not limited to, the implied warranties of merchantability and fitness for a particular purpose. Should the mineral lease awarded by the Louisiana State Mineral Board be subsequently modified, cancelled or abrogated due to the existence of conflicting leases, operating agreements, private claims or other future obligations or conditions which may affect all or any portion of the leased Tract, it shall not relieve the Lessee of the obligation to pay any bonus due thereon to the Louisiana State Mineral Board, nor shall the Louisiana State Mineral Board be obligated to refund any consideration paid by the Lessor prior to such modification, cancellation, or abrogation, including, but not limited to, bonuses, rentals and royalties.




NOTE: The State of Louisiana does hereby reserve, and this lease shall be subject to, the imprescriptible right of surface use in the nature of a servitude in favor of the Department of Natural Resources, including its Offices and Commissions, for the sole purpose of implementing, constructing, servicing and maintaining approved coastal zone management and/or restoration projects. Utilization of any and all rights derived

under this lease by the mineral lessee, its agents, successors or assigns, shall not interfere with nor hinder the reasonable surface use by the Department of Natural Resources, its Offices or Commissions, as herein above reserved.

Applicant: STARKS OIL CORPORATION

Bidder	Cash Payment	Price/Acre	Rental	Oil	Gas	Other

Legend

-  08100218
-  Wildlife
-  Active_Leases

DOQQ2004

LAFOURCHE PARISH

T18S - R21E

BAYOU LAFOURCHE

P.O.B.

SL 19701

POINTE AUX CHENES WMA

SL 19531

T19S - R21E



TRACT 40308 - Terrebonne Parish, Louisiana

All of the lands now or formerly constituting the beds and bottoms of all water bodies of every nature and description as to which title is vested in the State of Louisiana, together with all islands arising therein and other lands formed by accretion or by reliction, where allowed by law, excepting tax adjudicated lands, and not presently under mineral lease on October 8, 2008, situated in Terrebonne Parish, Louisiana, and more particularly described as follows: Beginning at a Point having Coordinates of X = 2,248,328.75 and Y = 297,094.76; thence South 12 degrees 26 minutes 45 seconds West 8,005.86 feet to a point having Coordinates of X = 2,246,603.36 and Y = 289,277.03; thence South 88 degrees 53 minutes 19 seconds West 10,709.06 feet to a point having Coordinates of X = 2,235,896.31 and Y = 289,069.32; thence North 00 degrees 17 minutes 02 seconds West 8,006.28 feet to a point having Coordinates of X = 2,235,856.64 and Y = 297,075.50; thence North 89 degrees 54 minutes 41 seconds East 12,472.12 feet to the point of beginning, containing approximately **51 acres**, all as more particularly outlined on a plat on file in the Office of Mineral Resources, Department of Natural Resources. All bearings, distances and coordinates are based on Louisiana Coordinate System of 1927, (North or South Zone), where applicable.

NOTE: The above description of the Tract nominated for lease has been provided and corrected, where required, exclusively by the nomination party. Any mineral lease selected from this Tract and awarded by the Louisiana State Mineral Board shall be without warranty of any kind, either express, implied, or statutory, including, but not limited to, the implied warranties of merchantability and fitness for a particular purpose. Should the mineral lease awarded by the Louisiana State Mineral Board be subsequently modified, cancelled or abrogated due to the existence of conflicting leases, operating agreements, private claims or other future obligations or conditions which may affect all or any portion of the leased Tract, it shall not relieve the Lessee of the obligation to pay any bonus due thereon to the Louisiana State Mineral Board, nor shall the Louisiana State Mineral Board be obligated to refund any consideration paid by the Lessor prior to such modification, cancellation, or abrogation, including, but not limited to, bonuses, rentals and royalties.

NOTE: The State of Louisiana does hereby reserve, and this lease shall be subject to, the imprescriptible right of surface use in the nature of a servitude in favor of the Department of Natural Resources, including its Offices and Commissions, for the sole purpose of implementing, constructing, servicing and maintaining approved coastal zone management and/or restoration projects. Utilization of any and all rights derived under this lease by the mineral lessee, its agents, successors or assigns, shall not interfere with nor hinder the reasonable surface use by the Department of Natural Resources, its Offices or Commissions, as herein above reserved.

Applicant: STARKS OIL CORPORATION

Bidder	Cash Payment	Price/Acre	Rental	Oil	Gas	Other

BAYOU TERREBONNE

P.O.B.

TERREBONNE PARISH

T18S - R19E

BAYOU PETIT CAILLOU

T19S - R18E



TRACT 40309 - Iberia Parish, Louisiana

All of the lands now or formerly constituting the beds and bottoms of all water bodies of every nature and description as to which title is vested in the State of Louisiana, together with all islands arising therein and other lands formed by accretion or by reliction, where allowed by law, excepting tax adjudicated lands, and not presently under mineral lease on October 8, 2008, situated in Iberia Parish, Louisiana, and more particularly described as follows: Beginning at a point on the West boundary of State Lease No. 19381 having Coordinates of X = 1,867,960.00 and Y = 301,019.48; thence South 479.48 feet along the West boundary of said State Lease No. 19381 to its Southwest corner having Coordinates of X = 1,867,960.00 and Y = 300,540.00; thence South 2,906.00 feet to a point having Coordinates of X = 1,867,960.00 and Y = 297,634.00; thence West 659.44 feet to the Northeast corner of State Lease No. 19412 having Coordinates of X = 1,867,300.56 and Y = 297,634.00; thence West 2,500.00 feet along the North boundary of said State Lease No. 19412 to its Northwest corner, also being the Northeast corner of State Lease No. 19410 having Coordinates of X = 1,864,800.56 and Y = 297,634.00; thence West 5,850.00 feet along the North boundary of said State Lease No. 19410 to its Northwest corner having Coordinates of X = 1,858,950.56 and Y = 297,634.00; thence West approximately 642 feet to a point on the Marsh Island Wildlife Refuge having a Coordinate of Y = 297,634.00; thence Northeasterly and Northwesterly along the meanders of said Marsh Island Wildlife Refuge to a point of intersection with an East-West line having a Coordinate of Y = 301,019.48; thence East approximately 7,208 feet along said line to the point of beginning, **LESS AND EXCEPT** that portion, if any, of the Marsh Island Wildlife Refuge that may lie within the above described tract, containing approximately **559 acres**, all as more particularly outlined on a plat on file in the Office of Mineral Resources, Department of Natural Resources. All bearings, distances and coordinates are based on Louisiana Coordinate System of 1927, (North or South Zone), where applicable.

NOTE: The above description of the Tract nominated for lease has been provided and corrected, where required, exclusively by the nomination party. Any mineral lease selected from this Tract and awarded by the Louisiana State Mineral Board shall be without warranty of any kind, either express, implied, or statutory, including, but not limited to, the implied warranties of merchantability and fitness for a particular purpose. Should the mineral lease awarded by the Louisiana State Mineral Board be subsequently modified, cancelled or abrogated due to the existence of conflicting leases, operating agreements, private claims or other future obligations or conditions which may affect all or any portion of the leased Tract, it shall not relieve the Lessee of the obligation to pay any bonus due thereon to the Louisiana State Mineral Board, nor shall the Louisiana State Mineral Board be obligated to refund any consideration paid by the Lessor prior to such modification, cancellation, or abrogation, including, but not limited to, bonuses, rentals and royalties.

NOTE: The Office of Mineral Resources will require a minimum bonus of \$350 per acre and a minimum royalty of 25%.

NOTE: The above described tract may be in the vicinity of existing shell reefs where drilling and dredging operations must be conducted in strict conformity with the regulations adopted by the Louisiana Department of Wildlife and Fisheries and/or the U.S. Corps of Engineers, U.S. Army.

NOTE: The State of Louisiana does hereby reserve, and this lease shall be subject to, the imprescriptible right of surface use in the nature of a servitude in favor of the Department of Natural Resources, including its Offices and Commissions, for the sole purpose of implementing, constructing, servicing and maintaining approved coastal zone management and/or restoration projects. Utilization of any and all rights derived under this lease by the mineral lessee, its agents, successors or assigns, shall not interfere with nor hinder the reasonable surface use by the Department of Natural Resources, its Offices or Commissions, as herein above reserved.

NOTE: The Department of Wildlife and Fisheries has designated certain areas in the coastal waters of the State of Louisiana as Oyster Seed Bed Areas. The exact location of those Seed Bed Areas must be obtained from the Department of Wildlife and Fisheries and any work done under a mineral lease from the State of Louisiana may necessarily be conducted in conformity with the rules and regulations promulgated by the said Department of Wildlife and Fisheries for Oyster Seed Bed Areas.

NOTE: All or a portion of this Tract lies within one nautical mile of the boundary of the Russell Sage or Marsh Island Wildlife Refuge and Game Preserve. Any activities connected with this lease conducted within this Tract which may pose potential environmental impacts to the said Wildlife Refuge and Game Preserve should be coordinated with the Louisiana Department of Wildlife and Fisheries.

Applicant: PATRICK L. DONOHUE PETROLEUM PROPERTIES, INC.

Bidder	Cash Payment	Price/Acre	Rental	Oil	Gas	Other

Legend

- 08100022
- Wildlife
- Blocks
- Active_Leases

