

TRACT 40290 - Jefferson Parish, Louisiana

All of the lands now or formerly constituting the beds and bottoms of all water bodies of every nature and description as to which title is vested in the State of Louisiana, together with all islands arising therein and other lands formed by accretion or by reliction, where allowed by law, excepting tax adjudicated lands, and not presently under mineral lease on October 8, 2008, situated in Jefferson Parish, Louisiana, and more particularly described as follows: Beginning at a point having Coordinates of X = 2,401,070.00 and Y = 329,760.00; thence East 6,960.00 feet to a point having Coordinates of X = 2,408,030.00 and Y = 329,760.00; thence North 3,380.00 feet to a point having Coordinates of X = 2,408,030.00 and Y = 331,140.00; thence East 7,933.34 feet to a point having Coordinates of X = 2,415,963.34 and Y = 331,140.00; thence South 8,450.21 feet to a point having Coordinates of X = 2,415,963.34 and Y = 324,689.79; thence West 14,893.34 feet to a point having Coordinates of X = 2,401,070.00 and Y = 324,689.79; thence North 5,070.21 feet to the point of beginning,

LESS AND EXCEPT in their entirety following State Leases:

State Lease No. 356, as amended;

State Lease No. 10439, as amended; being more fully described as follows: Beginning at a point having coordinates of X=2,408,341.08 and Y=327,055.82; thence along the Eastern, Southern and Western boundaries of said State Lease No. 10439, as amended, the following courses and distances: North 86 degrees 17 minutes 30 seconds East 59.70 feet to a point having Coordinates of X = 2,408,400.66 and Y = 327,059.68; South 00 degrees 00 minutes 02 seconds East 597.52 feet to a point having Coordinates of X = 2,408,400.66 and Y = 326,462.16; South 13 degrees 12 minutes 29 seconds West 243.60 feet to a point having Coordinates of X = 2,408,345.00 and Y = 326,225.01; South 14 degrees 44 minutes 37 seconds West 432.23 feet to a point having Coordinates of X = 2,408,235.00 and Y = 325,807.01; South 16 degrees 55 minutes 39 seconds West 240.42 feet to a point having Coordinates of X = 2,408,165.00 and Y = 325,577.00; South 18 degrees 55 minutes 29 seconds West 148.00 feet to a point having Coordinates of X = 2,408,117.00 and Y = 325,437.00; South 45 degrees 56 minutes 21 seconds West 86.28 feet to a point having Coordinates of X = 2,408,055.00 and Y = 325,377.00; South 54 degrees 46 minutes 57 seconds West 104.04 feet to a point having Coordinates of X = 2,407,970.00 and Y = 325,317.00; South 59 degrees 02 minutes 10 seconds West 110.79 feet to a point having Coordinates of X = 2,407,875.00 and Y = 325,260.00; South 68 degrees 55 minutes 52 seconds West 135.83 feet to a point having Coordinates of X = 2,407,748.25 and Y = 325,211.17; South 74 degrees 08 minutes 14 seconds West 315.26 feet to a point having Coordinates of X = 2,407,445.00 and Y = 325,125.00; South 78 degrees 07 minutes 51 seconds West 301.44 feet to a point having Coordinates of X = 2,407,150.00 and Y = 325,063.00; South 80 degrees 34 minutes 50 seconds West 219.97 feet to a point having Coordinates of X = 2,406,933.00 and Y = 325,027.00; South 82 degrees 57 minutes 43 seconds West 70.91 feet to a point having Coordinates of X = 2,406,862.62 and Y = 325,018.31; North 30 degrees 18

minutes 40 seconds East 500.05 feet to a point having Coordinates of X = 2,407,114.99 and Y = 325,450.01; North 28 degrees 29 minutes 44 seconds East 280.33 feet to a point having Coordinates of X = 2,407,248.74 and Y = 325,696.37; Northeasterly on an arc to the right having a radius of 1,223.25 feet and a long chord of North 47 degrees 17 minutes 24 seconds East 317.66 feet to a point having Coordinates of X = 2,407,482.15 and Y = 325,911.84; Northeasterly on an arc to the left having a radius of 1,768.42 feet and a long chord of North 36 degrees 03 minutes 17 seconds East 622.15 feet to a point having Coordinates of X = 2,407,848.32 and Y = 326,414.82; Northeasterly on an arc to the right having a radius of 964.84 feet and a long chord of North 32 degrees 42 minutes 17 seconds East 497.55 feet to a point having Coordinates of X = 2,408,117.15 and Y = 326,833.49; and North 45 degrees 12 minutes 19 seconds East 315.5 feet to the point of beginning.

State Lease No. 14554, as amended; being more fully described as follows:

AREA "A"

Beginning at a point having Coordinates of X=2,407,728.23 and Y=326,810.24; thence along the Western, Northern, Eastern and Southern boundaries of said Area "A" of State Lease No. 14554, as amended, the following courses and distances: North 48 degrees 06 minutes 16 seconds East 269.72 feet to a point having Coordinates of X = 2,407,929.00 and Y = 326,990.35; South 43 degrees 07 minutes 21 seconds West 25.94 feet to a point having Coordinates of X = 2,407,911.27 and Y = 326,971.42; South 23 degrees 42 minutes 39 seconds West 148.79 feet to a point having Coordinates of X = 2,407,851.44 and Y = 326,835.19; South 04 degrees 26 minutes 17 seconds West 58.40 feet to a point having Coordinates of X = 2,407,846.92 and Y = 326,776.96; South 39 degrees 34 minutes 14 seconds West 129.87 feet to a point having Coordinates of X = 2,407,764.19 and Y = 326,676.85; North 36 degrees 17 minutes 31 seconds West 41.52 feet to a point having Coordinates of X = 2,407,739.61 and Y = 326,710.32; and North 06 degrees 29 minutes 56 seconds West 100.56 feet to the point of beginning.

AREA "B"

Beginning at a point having Coordinates of X=2,407,528.72 and Y=326,520.95; thence along the Western, Northern, Eastern and Southern boundaries of said Area "B" of State Lease No. 14554, as amended, the following courses and distances: North 34 degrees 35 minutes 31 seconds East 117.14 feet to a point having Coordinates of X = 2,407,595.22 and Y = 326,617.38; South 46 degrees 58 minutes 40 seconds East 82.26 feet to a point having Coordinates of X = 2,407,655.36 and Y = 326,561.26; South 61 degrees 58 minutes 28 seconds West 15.69 feet to a point having Coordinates of X = 2,407,669.21 and Y = 326,553.88; South 37 degrees 08 minutes 41 seconds West 119.97 feet to a point having Coordinates of X = 2,407,596.77 and Y = 326,458.26; North 43 degrees 50 minutes 43 seconds West 13.09 feet to a point having Coordinates of X = 2,407,587.70 and Y = 326,467.70; and North 47 degrees 55 minutes 35 seconds West 79.46 feet to the point of beginning.

State Lease No. 15092, as amended; being more fully described as follows: Beginning at a point having Coordinates of X=2,408,767.58 and Y=327,906.41; thence along the Northwestern, Southeastern and Western boundaries of said State Lease No. 15092, as amended, the following courses and distances: North 52 degrees 48 minutes 02 seconds East 1,399.52 feet to a point having Coordinates of X = 2,409,882.35 and Y = 328,752.55; North 51 degrees 58 minutes 20 seconds East 814.46 feet to a point having Coordinates of X = 2,410,523.91 and Y = 329,254.29; North 49 degrees 55 minutes 00 seconds East 112.69 feet to a point having Coordinates of X = 2,410,610.13 and Y = 329,326.85; North 51 degrees 34 minutes 06 seconds East 756.42 feet to a point having Coordinates of X = 2,411,202.67 and Y = 329,797.03; North 52 degrees 12 minutes 04 seconds East 88.54 feet to a point having Coordinates of X = 2,411,272.63 and Y = 329,851.29; South 29 degrees 23 minutes 55 seconds West 117.65 feet to a point having Coordinates of X = 2,411,214.88 and Y = 329,748.79; South 34 degrees 16 minutes 20 seconds West 224.18 feet to a point having Coordinates of X = 2,411,088.64 and Y = 329,563.54; South 35 degrees 34 minutes 23 seconds West 188.31 feet to a point having Coordinates of X = 2,410,979.09 and Y = 329,410.37; South 38 degrees 55 minutes 45 seconds West 240.32 feet to a point having Coordinates of X = 2,410,828.08 and Y = 329,223.42; South 42 degrees 06 minutes 21 seconds West 229.73 feet to a point having Coordinates of X = 2,410,674.05 and Y = 329,052.98; South 44 degrees 04 minutes 24 seconds West 321.71 feet to a point having Coordinates of X = 2,410,450.27 and Y = 328,821.85; South 46 degrees 44 minutes 51 seconds West 333.69 feet to a point having Coordinates of X = 2,410,207.23 and Y = 328,593.20; South 48 degrees 55 minutes 19 seconds West 524.57 feet to a point having Coordinates of X = 2,409,811.80 and Y = 328,248.51; South 52 degrees 28 minutes 12 seconds West 223.06 feet to a point having Coordinates of X = 2,409,634.91 and Y = 328,112.63; South 55 degrees 47 minutes 26 seconds West 468.63 feet to a point having Coordinates of X = 2,409,247.36 and Y = 327,849.16; South 58 degrees 24 minutes 58 seconds West 315.37 feet to a point having Coordinates of X = 2,408,978.70 and Y = 327,683.98; South 63 degrees 21 minutes 10 seconds West 321.17 feet to a point having Coordinates of X = 2,408,691.65 and Y = 327,539.94; North 19 degrees 48 minutes 01 seconds East 29.21 feet to a point having Coordinates of X = 2,408,701.54 and Y = 327,567.42; North 13 degrees 55 minutes 56 seconds East 188.86 feet to a point having Coordinates of X = 2,408,747.01 and Y = 327,750.73; and North 07 degrees 31 minutes 36 seconds East 157.04 feet to the point of beginning.

State Lease No. 16681, as amended; being more fully described as follows:

PORTION "A"

Beginning at a point having Coordinates of X=2,408,564.55 and Y=327,270.69; thence along the Western, Northwestern and Southeastern boundaries of said Portion "A" of State Lease No. 16681, as amended, the following courses and distances: North 28 degrees 31 minutes 50 seconds East 186.93 feet to a point having Coordinates of X = 2,408,653.83 and Y = 327,434.92; North 19 degrees 48 minutes 01 seconds East 111.62 feet to a point having Coordinates of X = 2,408,691.65 and Y = 327,539.94; North 63

degrees 21 minutes 10 seconds East 321.17 feet to a point having Coordinates of X = 2,408,978.70 and Y = 327,683.98; North 58 degrees 24 minutes 58 seconds East 315.37 feet to a point having Coordinates of X = 2,409,247.36 and Y = 327,849.16; North 55 degrees 47 minutes 26 seconds East 468.63 feet to a point having Coordinates of X = 2,409,634.91 and Y = 328,112.63; North 52 degrees 28 minutes 12 seconds East 223.06 feet to a point having Coordinates of X = 2,409,811.80 and Y = 328,248.51; North 48 degrees 55 minutes 19 seconds East 524.57 feet to a point having Coordinates of X = 2,410,207.23 and Y = 328,593.20; North 46 degrees 44 minutes 51 seconds East 333.69 feet to a point having Coordinates of X = 2,410,450.27 and Y = 325,821.85; North 44 degrees 04 minutes 24 seconds East 321.71 feet to a point having Coordinates of X = 2,410,674.05 and Y = 329,052.98; North 42 degrees 06 minutes 21 seconds East 229.73 feet to a point having Coordinates of X = 2,410,828.08 and Y = 329,223.42; North 38 degrees 55 minutes 45 seconds East 240.32 feet to a point having Coordinates of X = 2,410,979.09 and Y = 329,410.37; North 35 degrees 34 minutes 23 seconds East 188.31 feet to a point having Coordinates of X = 2,411,088.64 and Y = 329,563.54; North 34 degrees 16 minutes 20 seconds East 224.18 feet to a point having Coordinates of X = 2,411,214.88 and Y = 329,748.79; North 29 degrees 23 minutes 55 seconds East 117.65 feet to a point having Coordinates of X = 2,411,272.63 and Y = 329,851.29; North 52 degrees 12 minutes 04 seconds East 248.04 feet to a point having Coordinates of X = 2,411,468.62 and Y = 330,003.32; North 52 degrees 56 minutes 21 seconds East 356.93 feet to a point having Coordinates of X = 2,411,753.45 and Y = 330,218.42; South 31 degrees 40 minutes 24 seconds West 491.54 feet to a point having Coordinates of X = 2,411,495.36 and Y = 329,800.10; South 35 degrees 17 minutes 02 seconds West 240.56 feet to a point having Coordinates of X = 2,411,356.40 and Y = 329,603.73; South 37 degrees 44 minutes 54 seconds West 466.82 feet to a point having Coordinates of X = 2,411,070.62 and Y = 329,234.61; South 40 degrees 28 minutes 04 seconds West 321.99 feet to a point having Coordinates of X = 2,410,861.64 and Y = 328,989.65; South 43 degrees 10 minutes 38 seconds West 355.33 feet to a point having Coordinates of X = 2,410,618.50 and Y = 328,730.53; South 45 degrees 17 minutes 40 seconds West 391.88 feet to a point having Coordinates of X = 2,410,339.98 and Y = 328,454.85; South 45 degrees 42 minutes 33 seconds West 165.40 feet to a point having Coordinates of X = 2,410,221.59 and Y = 328,339.35; South 49 degrees 45 minutes 04 seconds West 217.25 feet to a point having Coordinates of X = 2,410,055.77 and Y = 328,198.99; South 51 degrees 29 minutes 56 seconds West 222.50 feet to a point having Coordinates of X = 2,409,881.65 and Y = 328,060.47; South 54 degrees 06 minutes 24 seconds West 300.92 feet to a point having Coordinates of X = 2,409.637.87 and Y = 327,884.05; South 55 degrees 54 minutes 43 seconds West 228.79 feet to a point having Coordinates of X = 2,409,448.39 and Y = 327,755.82; South 58 degrees 53 minutes 14 seconds West 314.43 feet to a point having Coordinates of X = 2,409,179.19 and Y = 327,593.35; South 60 degrees 54 minutes 41 seconds West 338.78 feet to a point having Coordinates of X = 2,408,883.14 and Y = 327,428.65; and South 63 degrees 37 minutes 38 seconds West 355.60 feet to the point of beginning.

PORTION "B"

Beginning at a point having coordinates of X = 2,407,798.62 and Y = 327,962.91; thence along the Eastern, Western and Northern boundaries of the said Portion "B" of State Lease No. 16681, as amended, the following courses and distances: Southeasterly along an arc to the left with a radius of 33,100.00 feet and a long chord bearing of South 18 degrees 12 minutes 48 seconds East 963.53 feet to a point having Coordinates of X = 2,408,099.78 and Y = 327,047.65; Southwesterly along an arc to the left with a radius of 4,120.00 feet and a long chord bearing of South 43 degrees 03 minutes 02 seconds West 370.41 feet to a point having Coordinates of X = 2,407,846.92 and Y = 326,776.96; North 04 degrees 26 minutes 17 seconds East 58.40 feet to a point having Coordinates of X = 2,407,851.44 and Y = 326,835.19; North 23 degrees 42 minutes 39 seconds East 148.79 feet to a point having Coordinates of X = 2,407,911.27 and Y = 326,971.42; North 43 degrees 07 minutes 21 seconds East 25.94 feet to a point having Coordinates of X = 2,407,929.00 and Y = 326,990.35; South 48 degrees 06 minutes 16 seconds West 269.72 feet to a point having Coordinates of X = 2,407,728.23 and Y = 326,810.24; South 06 degrees 29 minutes 56 seconds East 100.56 feet to a point having Coordinates of X = 2,407,739.61 and Y = 326,710.32; South 36 degrees 17 minutes 31 seconds East 41.51 feet to a point having Coordinates of X = 2,407,764.19 and Y = 326,676.85; Southwesterly along an arc to the left with a radius of 4,120.00 feet and a long chord bearing of South 37 degrees 54 minutes 14 seconds West 109.50 feet to a point having Coordinates of X = 2,407,696.92 and Y = 326,590.45; South 37 degrees 08 minutes 41 seconds West 45.88 feet to a point having Coordinates of X = 2,407,669.21 and Y = 326,553.88; North 61 degrees 58 minutes 28 seconds West 15.69 feet to a point having Coordinates of X = 2,407.655.36 and Y = 326,561.26; North 46 degrees 58 minutes 40 seconds West 82.26 feet to a point having Coordinates of X = 2,407,595.22 and Y = 326,617.38; South 34 degrees 35 minutes 31 seconds West 117.14 feet to a point having Coordinates of X = 2,407,528.72 and Y = 326,520.95; South 47 degrees 55 minutes 35 seconds East 79.46 feet to a point having Coordinates of X = 2,407,587.70 and Y = 326,467.70; South 43 degrees 50 minutes 43 seconds East 13.09 feet to a point having Coordinates of X = 2,407,596.77 and Y = 326,458.26; South 37 degrees 08 minutes 41 seconds West 795.03 feet to a point having Coordinates of X = 2,407,116.71 and Y = 325,824.53; South 60 degrees 25 minutes 33 seconds West 792.71 feet to a point having Coordinates of X = 2,406,427.27 and Y = 325,433.28; Southwesterly along an arc to the left with a radius of 11,200.00 feet and a long chord bearing of South 59 degrees 16 minutes 41 seconds West 448.69 feet to a point having Coordinates of X = 2,406,041.56 and Y = 325,204.06; Southwesterly along an arc to the right with a radius of 2,600.00 feet and a long chord bearing of South 60 degrees 50 minutes 12 seconds West 245.54 feet to a point having Coordinates of X = 2,405,827.14 and Y = 325,084.41; Southwesterly along an arc to the right with a radius of 290.00 feet and a long chord bearing of South 74 degrees 32 minutes 01 seconds West 110.57 feet to a point having Coordinates of X

= 2,405,720.57 and Y = 325,054.92; Northwesterly along an arc to the right with a radius of 500.00 feet and a long chord bearing of North 85 degrees 44 minutes 04 seconds West 151.98 feet to a point having Coordinates of X = 2,405,569.02 and Y = 325,066.23; Northeasterly along an arc to the left with a radius of 1,890.00 feet and a long chord bearing of North 40 degrees 28 minutes 10 seconds East 600.04 feet to a point having Coordinates of X = 2,405,958.47 and Y = 325,522.71; North 31 degrees 20 minutes 08 seconds East 345.87 feet to a point having Coordinates of X = 2,406,138.34 and Y = 325,818.13; Northeasterly along an arc to the left with a radius of 3,040.00 feet and a long chord bearing of North 28 degrees 39 minutes 57 seconds East 283.22 feet to a point having Coordinates of X = 2,406,274.20 and Y = 326,066.64; Northeasterly along an arc to the right with a radius of 6,220.00 feet and a long chord bearing of North 28 degrees 59 minutes 05 seconds East 488.81 feet to a point having Coordinates of X = 2,406,511.06 and Y = 326,494.22; South 56 degrees 51 minutes 21 seconds West 110.51 feet to a point having Coordinates of X = 2,406,418.53 and Y = 326,433.80; Northeasterly along an arc to the right with a radius of 5,500.00 feet and a long chord bearing of North 28 degrees 19 minutes 49 seconds East 825.11 feet to a point having Coordinates of X = 2,406,810.09 and Y = 327,160.08; Northeasterly along an arc to the right with a radius of 2,800.00 feet and a long chord bearing of North 37 degrees 45 minutes 28 seconds East 500.31 feet to a point having Coordinates of X = 2,407,116.44 and Y = 327,555.63; Northeasterly along an arc to the right with a radius of 2,300.00 feet and a long chord bearing of North 51 degrees 10 minutes 37 seconds East 663.51 feet to a point having Coordinates of X = 2,407,633.37 and Y = 327,971.60; South 63 degrees 05 minutes 02 seconds East 18.57 feet to a point having Coordinates of X = 2,407,649.93 and Y = 327,963.19; Northeasterly along an arc to the right with a radius of 1,830.00 feet and a long chord bearing of North 58 degrees 00 minutes 54 seconds East 41.67 feet to a point having Coordinates of X = 2,407,685.28 and Y = 327,985.26; and South 78 degrees 51 minutes 11 seconds East 115.54 feet to the point of beginning, containing an aggregate of approximately **67 acres**, all as more particularly outlined on a plat on file in the Office of Mineral Resources, Department of Natural Resources. All bearings, distances and coordinates are based on Louisiana Coordinate System of 1927, (North or South Zone), where applicable.

NOTE: The above description of the Tract nominated for lease has been provided and corrected, where required, exclusively by the nomination party. Any mineral lease selected from this Tract and awarded by the Louisiana State Mineral Board shall be without warranty of any kind, either express, implied, or statutory, including, but not limited to, the implied warranties of merchantability and fitness for a particular purpose. Should the mineral lease awarded by the Louisiana State Mineral Board be subsequently modified, cancelled or abrogated due to the existence of conflicting leases, operating agreements, private claims or other future obligations or conditions which may affect all or any portion of the leased Tract, it shall not relieve the Lessee of the obligation to

pay any bonus due thereon to the Louisiana State Mineral Board, nor shall the Louisiana State Mineral Board be obligated to refund any consideration paid by the Lessor prior to such modification, cancellation, or abrogation, including, but not limited to, bonuses, rentals and royalties.

NOTE: The State of Louisiana does hereby reserve, and this lease shall be subject to, the imprescriptible right of surface use in the nature of a servitude in favor of the Department of Natural Resources, including its Offices and Commissions, for the sole purpose of implementing, constructing, servicing and maintaining approved coastal zone management and/or restoration projects. Utilization of any and all rights derived under this lease by the mineral lessee, its agents, successors or assigns, shall not interfere with nor hinder the reasonable surface use by the Department of Natural Resources, its Offices or Commissions, as herein above reserved.

NOTE: The Department of Wildlife and Fisheries has designated certain areas in the coastal waters of the State of Louisiana as Oyster Seed Bed Areas. The exact location of those Seed Bed Areas must be obtained from the Department of Wildlife and Fisheries and any work done under a mineral lease from the State of Louisiana may necessarily be conducted in conformity with the rules and regulations promulgated by the said Department of Wildlife and Fisheries for Oyster Seed Bed Areas.

Applicant: STONE ENERGY CORPORATION

Bidder	Cash Payment	Price/Acre	Rental	Oil	Gas	Other

Legend

08100074

Active_Leases

DOQQ2004

0 2,000 Feet

JEFFERSON PARISH

SL 356

SL 356

P.O.B.

THREE BAYOU BAY

SL 16681

SL 14554

SL 16681

SL 15092

SL 10439

BAYOU BARATARIA

SL 10439

TRACT 40291 - St. Mary Parish, Louisiana

All of the lands now or formerly constituting the beds and bottoms of all water bodies of every nature and description as to which title is vested in the State of Louisiana, together with all islands arising therein and other lands formed by accretion or by reliction, where allowed by law, excepting tax adjudicated lands, and not presently under mineral lease on October 8, 2008, situated in St. Mary Parish, Louisiana, and more particularly described as follows: Beginning at a point on the East boundary of State Lease No. 19367 having Coordinates of X = 1,970,970.56 and Y = 335,086.32; thence South 89 degrees 57 minutes 56 seconds East approximately 4,110 feet to the Northwest corner of State Lease No. 3586; thence Southerly and Southwesterly along the meanders of the West boundary of said State Lease No. 3586 to its point of intersection with an East-West line having a Coordinate of Y = 324,370.71; thence West approximately 596 feet to the Southeast corner of State Lease No. 19371 having Coordinates of X = 1,970,913.90 and Y = 324,370.71; thence North 00 degree 14 minutes 34 seconds East 5,299.79 feet along the East boundary of said State Lease No. 19371 to its Northeast corner, also being the Southeast corner of State Lease No. 19369 having Coordinates of X = 1,970,936.36 and Y = 329,670.45; thence North 00 degrees 21 minutes 40 seconds East 5,260.63 feet along the East boundary of said State Lease No. 19369 to its Northeast corner, also being the Southeast corner of said State Lease No. 19367 having Coordinates of X = 1,970,969.52 and Y = 334,930.97; thence North 00 degree 23 minutes 04 seconds East 155.35 feet along the East boundary of said State Lease No. 19367 to the point of beginning, **LESS AND EXCEPT** that portion, if any, of State Lease No. 3586 which may lie within the above described tract, containing approximately 417 gross acres and **62.55 net acres**, all as more particularly outlined on a plat on file in the Office of Mineral Resources, Department of Natural Resources. All bearings, distances and coordinates are based on Louisiana Coordinate System of 1927, (North or South Zone), where applicable.

NOTE: The above description of the Tract nominated for lease has been provided and corrected, where required, exclusively by the nomination party. Any mineral lease selected from this Tract and awarded by the Louisiana State Mineral Board shall be without warranty of any kind, either express, implied, or statutory, including, but not limited to, the implied warranties of merchantability and fitness for a particular purpose. Should the mineral lease awarded by the Louisiana State Mineral Board be subsequently modified, cancelled or abrogated due to the existence of conflicting leases, operating agreements, private claims or other future obligations or conditions which may affect all or any portion of the leased Tract, it shall not relieve the Lessee of the obligation to pay any bonus due thereon to the Louisiana State Mineral Board, nor shall the Louisiana State Mineral Board be obligated to refund any consideration paid by the Lessor prior to such modification, cancellation, or abrogation, including, but not limited to, bonuses, rentals and royalties.

NOTE: The State of Louisiana does hereby reserve, and this lease shall be subject to, the imprescriptible right of surface use in the nature of a servitude in favor of the Department of Natural Resources, including its Offices and Commissions, for the sole purpose of implementing, constructing, servicing and maintaining approved coastal zone management and/or restoration projects. Utilization of any and all rights derived under this lease by the mineral lessee, its agents, successors or assigns, shall not interfere with nor hinder the reasonable surface use by the Department of Natural Resources, its Offices or Commissions, as herein above reserved.

Applicant: THEOPHILUS OIL, GAS & LAND SERVICES, LLC

Bidder	Cash Payment	Price/Acre	Rental	Oil	Gas	Other

08100068

SDE_BUS_83.ACTIVE_LEASES

DOQQ2004

ST MARY PARISH

WAX LAKE

P.O.B.

SL 3586

WAX LAKE PASS

SL 19369

SL 19371

T17S - R10E

0 3,000 Feet



TRACT 40292 - Lafourche Parish, Louisiana

All of the lands now or formerly constituting the beds and bottoms of all water bodies of every nature and description as to which title is vested in the State of Louisiana, together with all islands arising therein and other lands formed by accretion or by reliction, where allowed by law, excepting tax adjudicated lands, and not presently under mineral lease on October 8, 2008, situated in Lafourche Parish, Louisiana, and more particularly described as follows: Beginning at a Point having Coordinates of X = 2,306,345.44 and Y = 312,796.49; thence South 88 degrees 12 minutes 07 seconds West 2,371.72 feet to a point having Coordinates of X = 2,303,974.89 and Y = 312,722.07; thence South 01 degrees 11 minutes 28 seconds East 242.61 feet to a point having Coordinates of X = 2,303,979.93 and Y = 312,479.52; thence South 88 degrees 41 minutes 54 seconds West 16,106.03 feet to a point having Coordinates of X = 2,287,878.06 and Y = 312,113.64; thence North 00 degrees 55 minutes 26 seconds West 13,316.97 feet to a point having Coordinates of X = 2,287,663.32 and Y = 325,428.88; thence East 18,480.00 feet to a point having Coordinates of X = 2,306,143.32 and Y = 325,428.88; thence South 00 degrees 55 minutes 00 seconds East 12,634.01 feet to the point of beginning, containing approximately **63 acres**, all as more particularly outlined on a plat on file in the Office of Mineral Resources, Department of Natural Resources. All bearings, distances and coordinates are based on Louisiana Coordinate System of 1927, (North or South Zone), where applicable.

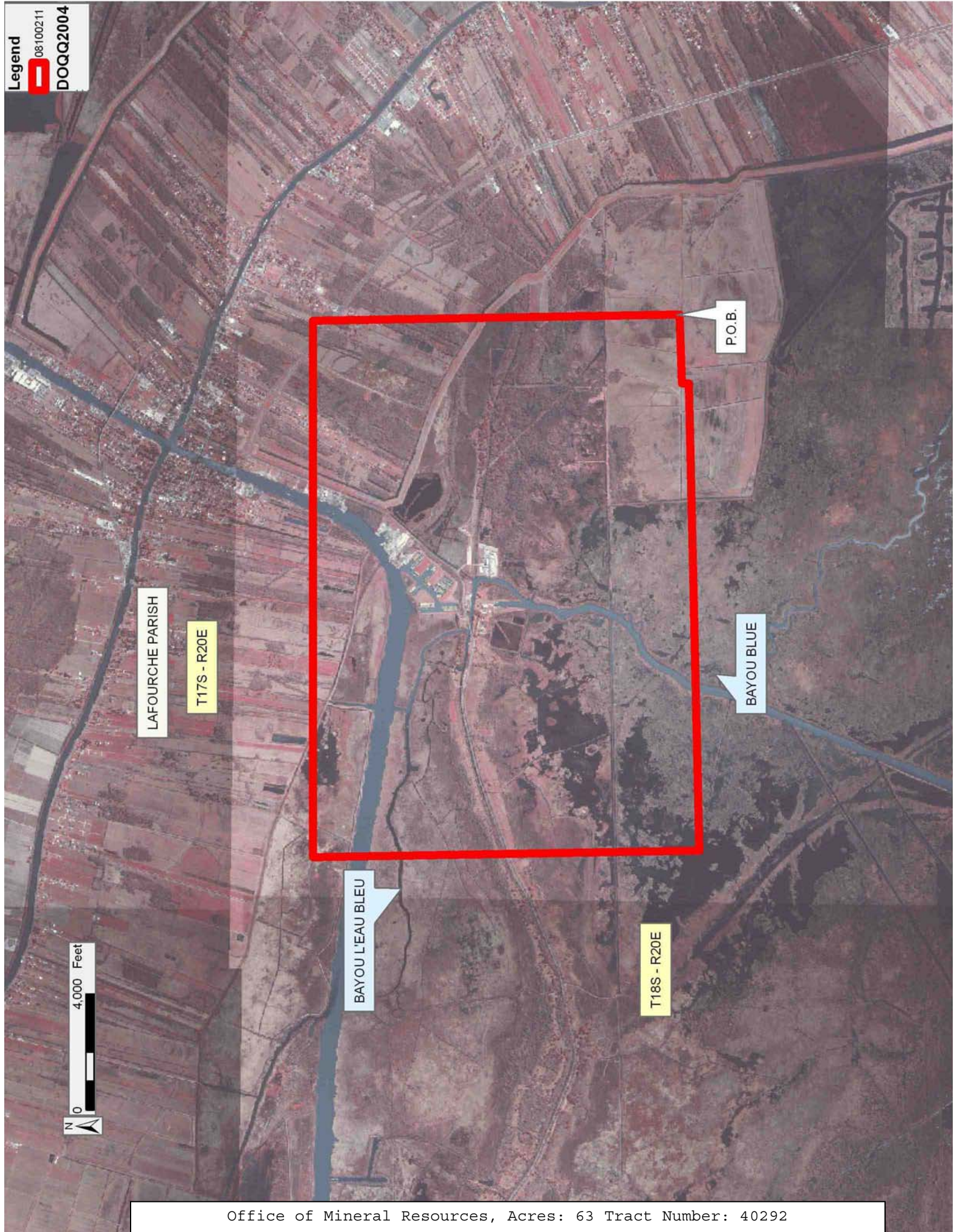
NOTE: The above description of the Tract nominated for lease has been provided and corrected, where required, exclusively by the nomination party. Any mineral lease selected from this Tract and awarded by the Louisiana State Mineral Board shall be without warranty of any kind, either express, implied, or statutory, including, but not limited to, the implied warranties of merchantability and fitness for a particular purpose. Should the mineral lease awarded by the Louisiana State Mineral Board be subsequently modified, cancelled or abrogated due to the existence of conflicting leases, operating agreements, private claims or other future obligations or conditions which may affect all or any portion of the leased Tract, it shall not relieve the Lessee of the obligation to pay any bonus due thereon to the Louisiana State Mineral Board, nor shall the Louisiana State Mineral Board be obligated to refund any consideration paid by the Lessor prior to such modification, cancellation, or abrogation, including, but not limited to, bonuses, rentals and royalties.

NOTE: The State of Louisiana does hereby reserve, and this lease shall be subject to, the imprescriptible right of surface use in the nature of a servitude in favor of the Department of Natural Resources, including its Offices and Commissions, for the sole purpose of implementing, constructing, servicing and maintaining approved coastal zone management and/or restoration projects. Utilization of any and all rights derived under this lease by the mineral lessee, its agents, successors or assigns, shall not interfere with nor hinder the reasonable surface use by the

Department of Natural Resources, its Offices or Commissions, as herein above reserved.

Applicant: STARKS OIL CORPORATION

Bidder	Cash Payment	Price/Acre	Rental	Oil	Gas	Other



TRACT 40293 - Lafourche Parish, Louisiana

All of the lands now or formerly constituting the beds and bottoms of all water bodies of every nature and description as to which title is vested in the State of Louisiana, together with all islands arising therein and other lands formed by accretion or by reliction, where allowed by law, excepting tax adjudicated lands, and not presently under mineral lease on October 8, 2008, situated in Lafourche Parish, Louisiana, and more particularly described as follows: Beginning at a Point having Coordinates of X = 2,271,774.86 and Y = 325,428.88; thence East 15,888.46 feet to a point having Coordinates of X = 2,287,663.32 and Y = 325,428.88; thence South 00 degrees 55 minutes 26 seconds East 13,316.97 feet to a point having Coordinates of X = 2,287,878.06 and Y = 312,113.64; thence South 88 degrees 41 minutes 54 seconds West 15,931.66 feet to a point having Coordinates of X = 2,271,950.51 and Y = 311,751.74; thence North 00 degrees 44 minutes 09 seconds West 13,678.27 feet to the point of beginning, containing approximately **35 acres**, all as more particularly outlined on a plat on file in the Office of Mineral Resources, Department of Natural Resources. All bearings, distances and coordinates are based on Louisiana Coordinate System of 1927, (North or South Zone), where applicable.

NOTE: The above description of the Tract nominated for lease has been provided and corrected, where required, exclusively by the nomination party. Any mineral lease selected from this Tract and awarded by the Louisiana State Mineral Board shall be without warranty of any kind, either express, implied, or statutory, including, but not limited to, the implied warranties of merchantability and fitness for a particular purpose. Should the mineral lease awarded by the Louisiana State Mineral Board be subsequently modified, cancelled or abrogated due to the existence of conflicting leases, operating agreements, private claims or other future obligations or conditions which may affect all or any portion of the leased Tract, it shall not relieve the Lessee of the obligation to pay any bonus due thereon to the Louisiana State Mineral Board, nor shall the Louisiana State Mineral Board be obligated to refund any consideration paid by the Lessor prior to such modification, cancellation, or abrogation, including, but not limited to, bonuses, rentals and royalties.

NOTE: The State of Louisiana does hereby reserve, and this lease shall be subject to, the imprescriptible right of surface use in the nature of a servitude in favor of the Department of Natural Resources, including its Offices and Commissions, for the sole purpose of implementing, constructing, servicing and maintaining approved coastal zone management and/or restoration projects. Utilization of any and all rights derived under this lease by the mineral lessee, its agents, successors or assigns, shall not interfere with nor hinder the reasonable surface use by the Department of Natural Resources, its Offices or Commissions, as herein above reserved.

Applicant: STARKS OIL CORPORATION

Bidder	Cash Payment	Price/Acre	Rental	Oil	Gas	Other

LAFOURCHE PARISH

T17S - R20E

BAYOU L'EAU BLEU

P.O.B.

BAYOU BLUE

T18S - R20E

0 4,000 Feet



TRACT 40294 - Lafourche Parish, Louisiana

All of the lands now or formerly constituting the beds and bottoms of all water bodies of every nature and description as to which title is vested in the State of Louisiana, together with all islands arising therein and other lands formed by accretion or by reliction, where allowed by law, excepting tax adjudicated lands, and not presently under mineral lease on October 8, 2008, situated in Lafourche Parish, Louisiana, and more particularly described as follows: Beginning at a Point having Coordinates of X = 2,257,400.00 and Y = 310,719.75; thence North 12,780.26 feet to a point having Coordinates of X = 2,257,400.00 and Y = 323,500.00; thence West 2,040.39 feet to a point having Coordinates of X = 2,255,359.61 and Y = 323,500.00; thence North 01 degrees 21 minutes 17 seconds West 1,929.42 feet to a point having Coordinates of X = 2,255,314.00 and Y = 325,428.88; thence East 16,460.86 feet to a point having Coordinates of X = 2,271,774.86 and Y = 325,428.88; thence South 00 degrees 44 minutes 09 seconds East 14,389.13 feet to a point having Coordinates of X = 2,271,959.64 and Y = 311,040.94; thence South 88 degrees 44 minutes 10 seconds West 14,563.18 feet to the point of beginning, containing approximately **11 acres**, all as more particularly outlined on a plat on file in the Office of Mineral Resources, Department of Natural Resources. All bearings, distances and coordinates are based on Louisiana Coordinate System of 1927, (North or South Zone), where applicable.

NOTE: The above description of the Tract nominated for lease has been provided and corrected, where required, exclusively by the nomination party. Any mineral lease selected from this Tract and awarded by the Louisiana State Mineral Board shall be without warranty of any kind, either express, implied, or statutory, including, but not limited to, the implied warranties of merchantability and fitness for a particular purpose. Should the mineral lease awarded by the Louisiana State Mineral Board be subsequently modified, cancelled or abrogated due to the existence of conflicting leases, operating agreements, private claims or other future obligations or conditions which may affect all or any portion of the leased Tract, it shall not relieve the Lessee of the obligation to pay any bonus due thereon to the Louisiana State Mineral Board, nor shall the Louisiana State Mineral Board be obligated to refund any consideration paid by the Lessor prior to such modification, cancellation, or abrogation, including, but not limited to, bonuses, rentals and royalties.

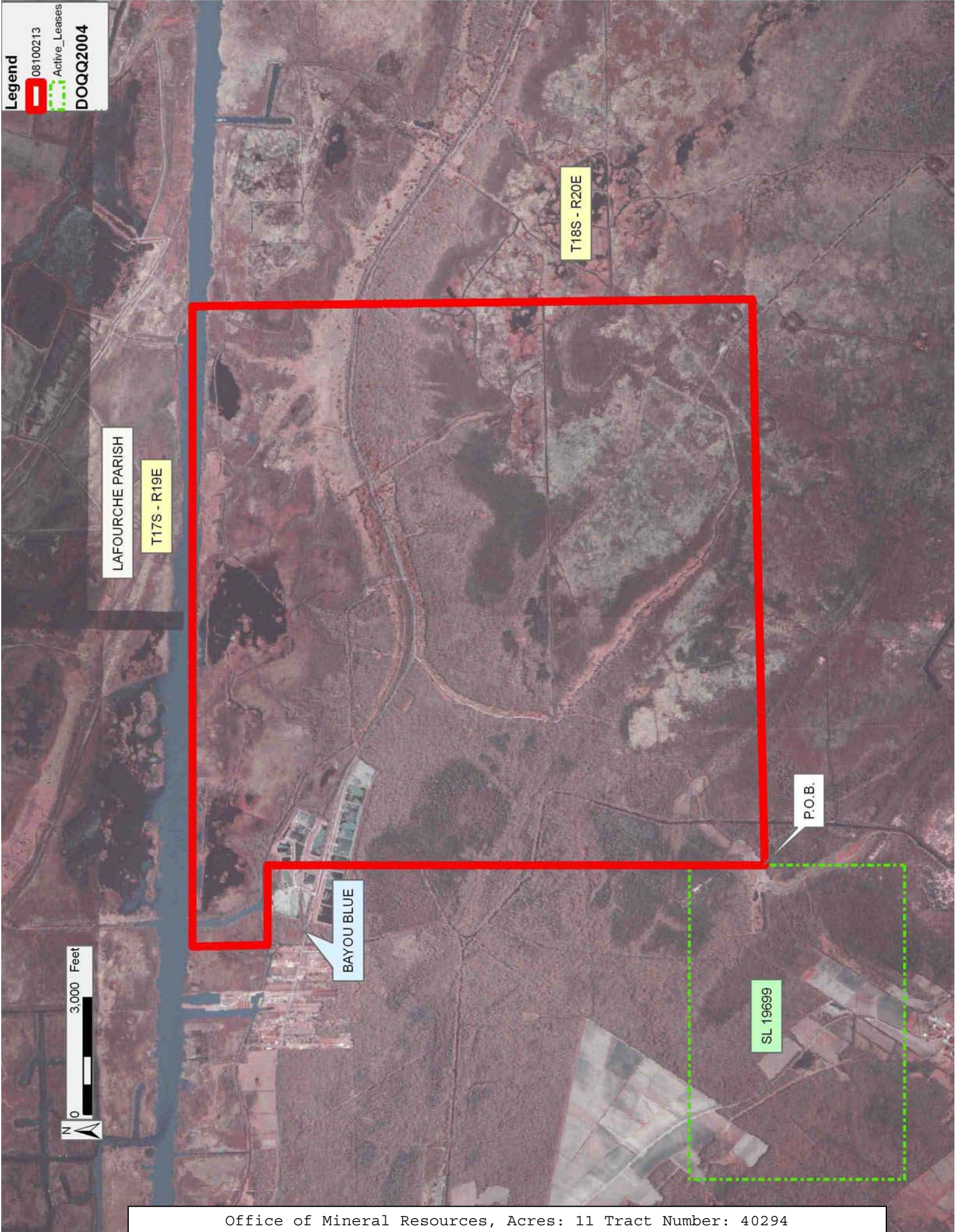
NOTE: The State of Louisiana does hereby reserve, and this lease shall be subject to, the imprescriptible right of surface use in the nature of a servitude in favor of the Department of Natural Resources, including its Offices and Commissions, for the sole purpose of implementing, constructing, servicing and maintaining approved coastal zone management and/or restoration projects. Utilization of any and all rights derived under this lease by the mineral lessee, its agents, successors or assigns, shall not interfere with nor hinder the reasonable surface use by the Department of Natural Resources, its Offices or Commissions, as herein above reserved.

Applicant: STARKS OIL CORPORATION

Bidder	Cash Payment	Price/Acre	Rental	Oil	Gas	Other

Legend

- 08100213
- Active_Leases
- DOQQ2004



TRACT 40295 - Lafourche Parish, Louisiana

All of the lands now or formerly constituting the beds and bottoms of all water bodies of every nature and description as to which title is vested in the State of Louisiana, together with all islands arising therein and other lands formed by accretion or by reliction, where allowed by law, excepting tax adjudicated lands, and not presently under mineral lease on October 8, 2008, situated in Lafourche Parish, Louisiana, and more particularly described as follows: Beginning at a Point having Coordinates of X = 2,306,345.44 and Y = 312,796.49; thence North 00 degrees 55 minutes 00 seconds West 10,536.47 feet to a point having Coordinates of X = 2,306,176.87 and Y = 323,331.61; thence North 88 degrees 42 minutes 12 seconds East 16,936.30 feet to a point having Coordinates of X = 2,323,108.83 and Y = 323,714.85; thence South 10,707.13 feet to a point having Coordinates of X = 2,323,108.83 and Y = 313,007.72; thence South 89 degrees 16 minutes 41 seconds West 16,764.72 feet to the point of beginning, containing approximately **53 acres**

, all as more particularly outlined on a plat on file in the Office of Mineral Resources, Department of Natural Resources. All bearings, distances and coordinates are based on Louisiana Coordinate System of 1927, (North or South Zone), where applicable.

NOTE: The above description of the Tract nominated for lease has been provided and corrected, where required, exclusively by the nomination party. Any mineral lease selected from this Tract and awarded by the Louisiana State Mineral Board shall be without warranty of any kind, either express, implied, or statutory, including, but not limited to, the implied warranties of merchantability and fitness for a particular purpose. Should the mineral lease awarded by the Louisiana State Mineral Board be subsequently modified, cancelled or abrogated due to the existence of conflicting leases, operating agreements, private claims or other future obligations or conditions which may affect all or any portion of the leased Tract, it shall not relieve the Lessee of the obligation to pay any bonus due thereon to the Louisiana State Mineral Board, nor shall the Louisiana State Mineral Board be obligated to refund any consideration paid by the Lessor prior to such modification, cancellation, or abrogation, including, but not limited to, bonuses, rentals and royalties.

NOTE: The State of Louisiana does hereby reserve, and this lease shall be subject to, the imprescriptible right of surface use in the nature of a servitude in favor of the Department of Natural Resources, including its Offices and Commissions, for the sole purpose of implementing, constructing, servicing and maintaining approved coastal zone management and/or restoration projects. Utilization of any and all rights derived under this lease by the mineral lessee, its agents, successors or assigns, shall not interfere with nor hinder the reasonable surface use by the Department of Natural Resources, its Offices or Commissions, as herein above reserved.

Applicant: STARKS OIL CORPORATION

Bidder	Cash Payment	Price/Acre	Rental	Oil	Gas	Other

LAFOURCHE PARISH

T17S - R21E

BAYOU LAFOURCHE

T18S - R21E

P.O.B.



TRACT 40296 - St. Mary Parish, Louisiana

All of the lands now or formerly constituting the beds and bottoms of all water bodies of every nature and description as to which title is vested in the State of Louisiana, together with all islands arising therein and other lands formed by accretion or by reliction, where allowed by law, excepting tax adjudicated lands, and not presently under mineral lease on October 8, 2008, situated in St. Mary Parish, Louisiana, and more particularly described as follows: Beginning at the Southeast corner of State Lease No. 19371 having Coordinates of X = 1,970,913.90 and Y = 324,370.71; thence East approximately 596 feet to a point on the West boundary of State Lease No. 3586 having a Coordinate of Y = 324,370.71; thence Southwesterly approximately 1,031 feet along the West boundary of said State Lease No. 3586 to a point of intersection with an East-West line having a Coordinate of Y = 323,360.26; thence West approximately 1,390 feet along said line to a point having Coordinates of X = 1,969,913.95 and Y = 323,360.26; thence North 1,000.00 feet to a point on the South boundary of said State Lease No. 19371 having Coordinates of X = 1,969,913.95 and Y = 324,360.26; thence North 89 degrees 24 minutes 04 seconds East 1,000.00 feet along the South boundary of said State Lease No. 19371 to the point of beginning, **LESS AND EXCEPT** that portion, if any, of State Lease No. 3586 which may lie within the above described tract, containing approximately 10 gross acres and **1.5 net acres**, all as more particularly outlined on a plat on file in the Office of Mineral Resources, Department of Natural Resources. All bearings, distances and coordinates are based on Louisiana Coordinate System of 1927, (North or South Zone), where applicable.

NOTE: The above description of the Tract nominated for lease has been provided and corrected, where required, exclusively by the nomination party. Any mineral lease selected from this Tract and awarded by the Louisiana State Mineral Board shall be without warranty of any kind, either express, implied, or statutory, including, but not limited to, the implied warranties of merchantability and fitness for a particular purpose. Should the mineral lease awarded by the Louisiana State Mineral Board be subsequently modified, cancelled or abrogated due to the existence of conflicting leases, operating agreements, private claims or other future obligations or conditions which may affect all or any portion of the leased Tract, it shall not relieve the Lessee of the obligation to pay any bonus due thereon to the Louisiana State Mineral Board, nor shall the Louisiana State Mineral Board be obligated to refund any consideration paid by the Lessor prior to such modification, cancellation, or abrogation, including, but not limited to, bonuses, rentals and royalties.

NOTE: The State of Louisiana does hereby reserve, and this lease shall be subject to, the imprescriptible right of surface use in the nature of a servitude in favor of the Department of Natural Resources, including its Offices and Commissions, for the sole purpose of implementing, constructing, servicing and maintaining approved coastal zone management and/or restoration projects. Utilization of any and all rights derived

under this lease by the mineral lessee, its agents, successors or assigns, shall not interfere with nor hinder the reasonable surface use by the Department of Natural Resources, its Offices or Commissions, as herein above reserved.

Applicant: THEOPHILUS OIL, GAS & LAND SERVICES, LLC

Bidder	Cash Payment	Price/Acre	Rental	Oil	Gas	Other

08100067

Wildlife

SDE_BUS_83_ACTIVE_LEASE

DOQQ2004



0 2,000 Feet

ST MARY PARISH

SL 19370

SL 19371

T17S - R10E

P.O.B.

WAX LAKE PASS

SL 3586



SL 19614

SL 3909

ATCHAFALAYA DELTA WMA

ATCHAFALAYA BAY

TRACT 40297 - Jefferson Parish, Louisiana

All of the lands now or formerly constituting the beds and bottoms of all water bodies of every nature and description as to which title is vested in the State of Louisiana, together with all islands arising therein and other lands formed by accretion or by reliction, where allowed by law, excepting tax adjudicated lands, and not presently under mineral lease on October 8, 2008, situated in Jefferson Parish, Louisiana, and more particularly described as follows: Beginning at a point on the Eastern boundary of State Lease No. 1972, as amended having Coordinates of X = 2,378,397.10 and Y = 318,563.12; thence East 1,081.50 feet to a point on the Western boundary of State Lease No. 2453, as amended, having Coordinates of X = 2,379,478.60 and Y = 318,563.12; thence South 3,383.12 feet along the Western boundary of said State Lease No. 2453 to the Northeast corner of State Lease No. 18010 having Coordinates of X = 2,379,478.60 and Y = 315,180.00; thence West 2,128.60 feet along the Northern boundary of said State Lease No. 18010 to its Northwest corner having Coordinates of X = 2,377,350.00 and Y = 315,180.00; thence North 752.50 feet to a point on the Southern boundary of said State Lease No. 1972 having Coordinates of X = 2,377,350.00 and Y = 315,932.50; thence along the boundary of said State Lease No. 1972 the following courses: North 71 degrees 13 minutes 00 seconds East 116.05 feet to a point having Coordinates of X = 2,377,459.87 and Y = 315,969.87; North 77 degrees 21 minutes 00 seconds East 251.10 feet to a point having Coordinates of X = 2,377,704.87 and Y = 316,024.86; North 83 degrees 48 minutes 00 seconds East 231.40 feet to a point having Coordinates of X = 2,377,934.92 and Y = 316,049.85; South 88 degrees 47 minutes 00 seconds East 235.10 feet to a point having Coordinates of X = 2,378,169.97 and Y = 316,044.86; South 87 degrees 51 minutes 00 seconds East 400.30 feet to a point having Coordinates of X = 2,378,569.98 and Y = 316,029.84; North 42 degrees 26 minutes 19 seconds East 250.00 feet to a point having Coordinates of X = 2,378,738.68 and Y = 316,214.34; North 49 degrees 07 minutes 35 seconds East 310.52 feet to a point having Coordinates of X = 2,378,973.48 and Y = 316,417.54; North 42 degrees 11 minutes 25 seconds East 300.03 feet to a point having Coordinates of X = 2,379,174.98 and Y = 316,639.84; North 14 degrees 59 minutes 49 seconds West 727.65 feet to a point having Coordinates of X = 2,378,986.69 and Y = 317,342.71; North 69 degrees 05 minutes 36 seconds East 131.99 feet to a point having Coordinates of X = 2,379,109.99 and Y = 317,389.81; North 16 degrees 41 minutes 57 seconds West 129.46 feet to a point having Coordinates of X = 2,379,072.79 and Y = 317,513.81; North 57 degrees 23 minutes 59 seconds East 20.42 feet to a point having Coordinates of X = 2,379,089.99 and Y = 317,524.81; North 37 degrees 52 minutes 30 seconds East 57.01 feet to a point having Coordinates of X = 2,379,125.00 and Y = 317,569.81; North 32 degrees 28 minutes 16 seconds East 65.19 feet to a point having Coordinates of X = 2,379,159.99 and Y = 317,624.81; North 18 degrees 26 minutes 06 seconds East 63.25 feet to a point having Coordinates of X = 2,379,180.00 and Y = 317,684.81; North 11 degrees 18 minutes 36 seconds East 76.49 feet to a point having Coordinates of X = 2,379,195.00 and Y = 317,759.82; North 60.00 feet to a point having Coordinates of X = 2,379,195.00 and Y =

317,819.82; North 10 degrees 37 minutes 58 seconds West 81.30 feet to a point having Coordinates of X = 2,379,180.00 and Y = 317,899.72; North 70 degrees 32 minutes 40 seconds West 264.50 feet to a point having Coordinates of X = 2,378,930.60 and Y = 317,987.82; North 16 degrees 42 minutes 16 seconds West 315.20 feet to a point having Coordinates of X = 2,378,840.00 and Y = 318,289.72; North 76 degrees 46 minutes 51 seconds West 185.41 feet to a point having Coordinates of X = 2,378,659.50 and Y = 318,332.12; North 22 degrees 11 minutes 03 seconds West 197.31 feet to a point having Coordinates of X = 2,378,585.00 and Y = 318,514.82 and North 75 degrees 35 minutes 03 seconds West 194.01 feet to the point of beginning, containing approximately **70.92 acres**, all as more particularly outlined on a plat on file in the Office of Mineral Resources, Department of Natural Resources. All bearings, distances and coordinates are based on Louisiana Coordinate System of 1927, (North or South Zone), where applicable.

NOTE: The above description of the Tract nominated for lease has been provided and corrected, where required, exclusively by the nomination party. Any mineral lease selected from this Tract and awarded by the Louisiana State Mineral Board shall be without warranty of any kind, either express, implied, or statutory, including, but not limited to, the implied warranties of merchantability and fitness for a particular purpose. Should the mineral lease awarded by the Louisiana State Mineral Board be subsequently modified, cancelled or abrogated due to the existence of conflicting leases, operating agreements, private claims or other future obligations or conditions which may affect all or any portion of the leased Tract, it shall not relieve the Lessee of the obligation to pay any bonus due thereon to the Louisiana State Mineral Board, nor shall the Louisiana State Mineral Board be obligated to refund any consideration paid by the Lessor prior to such modification, cancellation, or abrogation, including, but not limited to, bonuses, rentals and royalties.

NOTE: The State of Louisiana does hereby reserve, and this lease shall be subject to, the imprescriptible right of surface use in the nature of a servitude in favor of the Department of Natural Resources, including its Offices and Commissions, for the sole purpose of implementing, constructing, servicing and maintaining approved coastal zone management and/or restoration projects. Utilization of any and all rights derived under this lease by the mineral lessee, its agents, successors or assigns, shall not interfere with nor hinder the reasonable surface use by the Department of Natural Resources, its Offices or Commissions, as herein above reserved.

NOTE: The Department of Wildlife and Fisheries has designated certain areas in the coastal waters of the State of Louisiana as Oyster Seed Bed Areas. The exact location of those Seed Bed Areas must be obtained from the Department of Wildlife and Fisheries and any work done under a mineral lease from the State of Louisiana may necessarily be conducted in

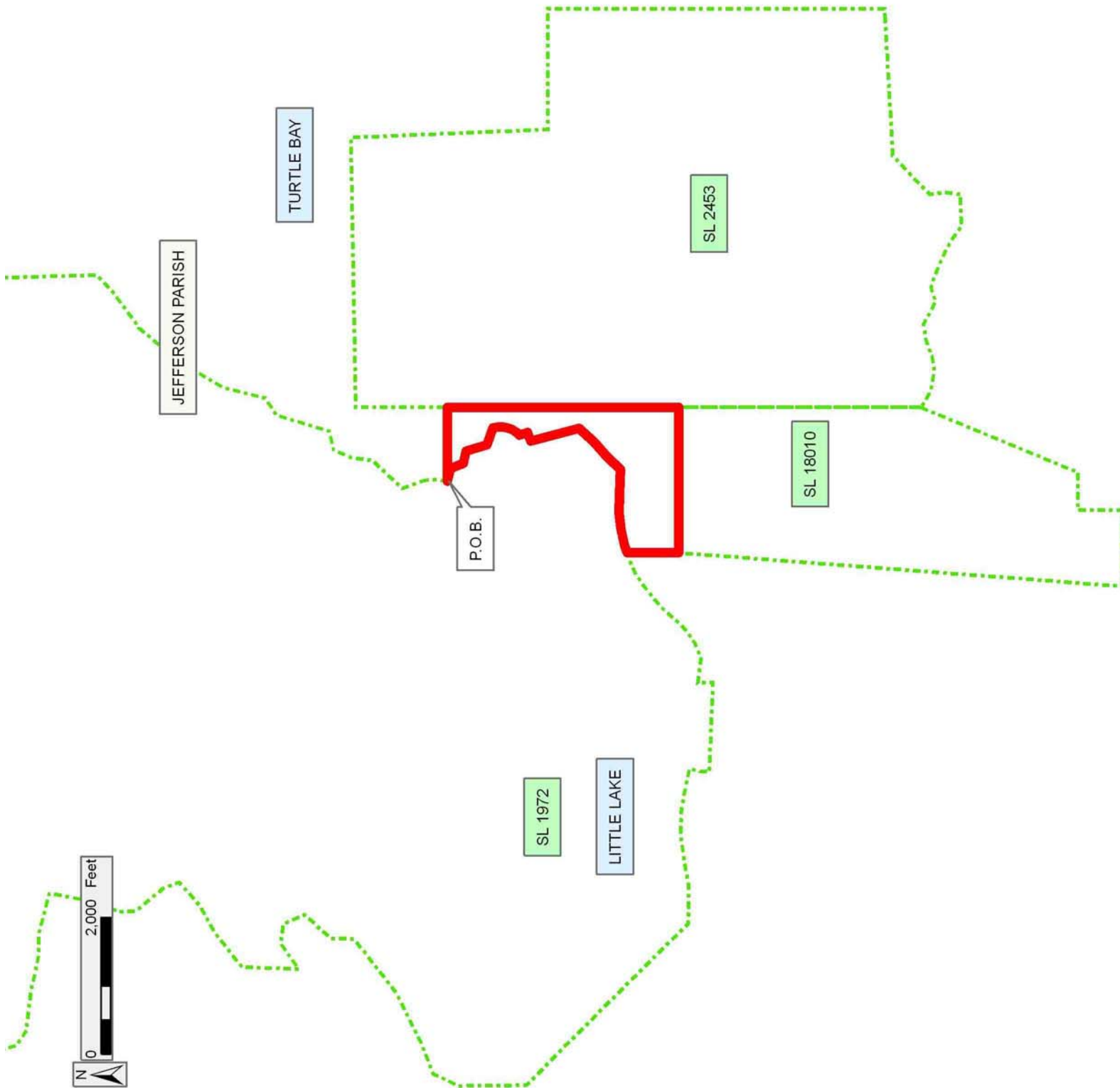
conformity with the rules and regulations promulgated by the said Department of Wildlife and Fisheries for Oyster Seed Bed Areas.

Applicant: AMBER CROOKS

Bidder	Cash Payment	Price/Acre	Rental	Oil	Gas	Other

Legend

- 08100025
- Active_Leases



TRACT 40298 - Lafourche Parish, Louisiana

All of the lands now or formerly constituting the beds and bottoms of all water bodies of every nature and description as to which title is vested in the State of Louisiana, together with all islands arising therein and other lands formed by accretion or by reliction, where allowed by law, excepting tax adjudicated lands, and not presently under mineral lease on October 8, 2008, situated in Lafourche Parish, Louisiana, and more particularly described as follows: Beginning at a Point having Coordinates of X = 2,306,345.44 and Y = 312,796.49; thence North 89 degrees 16 minutes 41 seconds East 16,764.72 feet to a point having Coordinates of X = 2,323,108.83 and Y = 313,007.72; thence South 01 degrees 06 minutes 24 seconds West 16,183.92 feet to a point having Coordinates of X = 2,322,796.23 and Y = 296,826.82; thence North 89 degrees 47 minutes 02 seconds West 4800.64 feet to a point being the Northwest corner of State Lease No. 19701 having Coordinates of X = 2,317,995.62 and Y = 296,844.93; thence North 89 degrees 47 minutes 02 seconds West approximately 3,463 feet along the Northern boundary of said State Lease No. 19701 to a point on the boundary of Pointe Aux Chenes State Wildlife Management Area; thence Northwesterly along the said boundary of Pointe Aux Chenes State Wildlife Management Area to a point being the Easternmost Northeastern corner of State Lease No. 19700; thence North 82 degrees 51 minutes 00 seconds West approximately 1,326 feet along the Northern boundary of said State Lease No. 19700 to a point having Coordinates of X = 2,310,781.93 and Y = 304,753.82; thence North 82 degrees 51 minutes 02 seconds West along said State Lease No. 19700 approximately 1,317 feet to a point on the said boundary of Pointe Aux Chenes State Wildlife Management Area, also being the Northernmost Northeastern corner of State Lease No. 19700; thence Southwesterly along the said boundary of Pointe Aux Chenes State Wildlife Management Area, to a point that intersects a line that bear South 00 degrees 49 minutes 05 seconds East from a coordinate X = 2,306,345.44 and Y = 312,796.49; thence North 00 degrees 49 minutes 05 seconds West along said line approximately 7,940 feet to the point of beginning, **LESS AND EXCEPT** that portion, if any, that lies within the Pointe Aux Chenes State Wildlife Management Area, containing approximately **73 acres**, all as more particularly outlined on a plat on file in the Office of Mineral Resources, Department of Natural Resources. All bearings, distances and coordinates are based on Louisiana Coordinate System of 1927, (North or South Zone), where applicable.

NOTE: The above description of the Tract nominated for lease has been provided and corrected, where required, exclusively by the nomination party. Any mineral lease selected from this Tract and awarded by the Louisiana State Mineral Board shall be without warranty of any kind, either express, implied, or statutory, including, but not limited to, the implied warranties of merchantability and fitness for a particular purpose. Should the mineral lease awarded by the Louisiana State Mineral Board be subsequently modified, cancelled or abrogated due to the existence of conflicting leases, operating agreements, private claims or other future obligations or conditions which may affect all or any portion

of the leased Tract, it shall not relieve the Lessee of the obligation to pay any bonus due thereon to the Louisiana State Mineral Board, nor shall the Louisiana State Mineral Board be obligated to refund any consideration paid by the Lessor prior to such modification, cancellation, or abrogation, including, but not limited to, bonuses, rentals and royalties.

NOTE: The State of Louisiana does hereby reserve, and this lease shall be subject to, the imprescriptible right of surface use in the nature of a servitude in favor of the Department of Natural Resources, including its Offices and Commissions, for the sole purpose of implementing, constructing, servicing and maintaining approved coastal zone management and/or restoration projects. Utilization of any and all rights derived under this lease by the mineral lessee, its agents, successors or assigns, shall not interfere with nor hinder the reasonable surface use by the Department of Natural Resources, its Offices or Commissions, as herein above reserved.

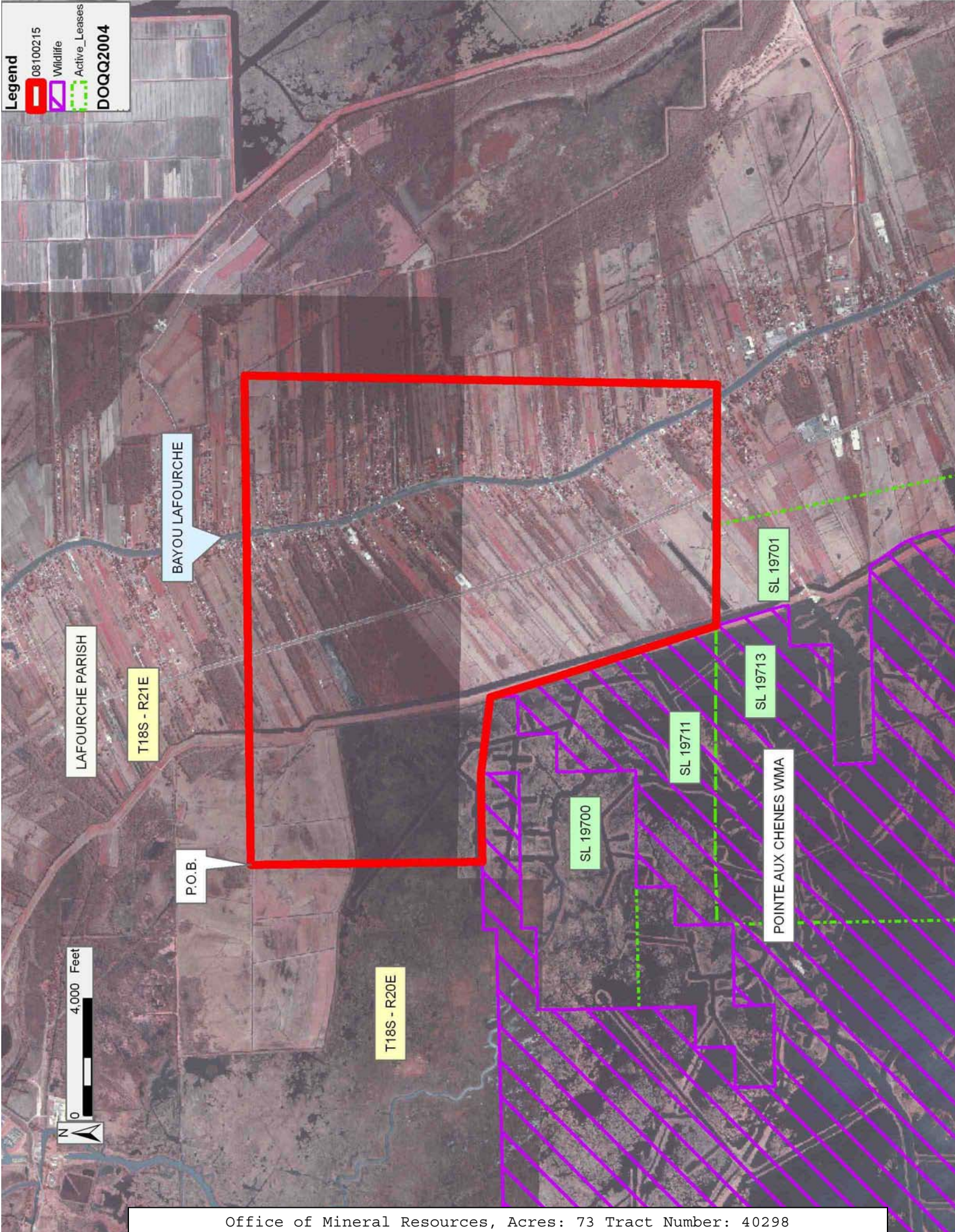
Applicant: STARKS OIL CORPORATION

Bidder	Cash Payment	Price/Acre	Rental	Oil	Gas	Other

Legend

- 08100215
- Wildlife
- Active_Leases

DOQQ2004



TRACT 40299 - Lafourche Parish, Louisiana

All of the lands now or formerly constituting the beds and bottoms of all water bodies of every nature and description as to which title is vested in the State of Louisiana, together with all islands arising therein and other lands formed by accretion or by reliction, where allowed by law, excepting tax adjudicated lands, and not presently under mineral lease on October 8, 2008, situated in Lafourche Parish, Louisiana, and more particularly described as follows: Beginning at a Point having Coordinates of X = 2,306,345.44 and Y = 312,796.49; thence South 00 degrees 49 minutes 05 seconds East approximately 7,935 feet to a point on the boundary of Pointe Aux Chenes State Wildlife Management Area; thence Westerly and Southerly along the Northern boundary of said Pointe Aux Chenes Wildlife Management Area to a that intersects a line having a bearing of South 00 degrees 51 minutes 09 seconds East from a Coordinate X = 2,287,878.06 and Y = 312,113.64; thence North 00 degrees 51 minutes 09 seconds West approximately 8,116 feet along said line to a point having Coordinates of X = 2,287,878.06 and Y = 312,113.64; thence North 88 degrees 41 minutes 54 seconds East 16,106.03 feet to a point having Coordinates of X = 2,303,979.93 and Y = 312,479.52; thence North 01 degrees 11 minutes 28 seconds West 242.60 feet to a point having Coordinates of X = 2,303,974.89 and Y = 312,722.07; thence North 88 degrees 12 minutes 07 seconds East 2,371.72 feet to the point of beginning, **LESS AND EXCEPT** that portion, if any, of Operating Agreement 185 that lies within the Textularia Sand, Reservoir L, Bully Camp Field, being defined herein as the oil and gas bearing Sand encountered between the depth of 11,529 feet and 11,709 feet (induction-electric log measurement) in the Exxon Fee B-1 Well located in Section 54, Township 19 South, Range 21 East, Lafourche Parish, Louisiana, and the TP-5 Sand, Reservoir J, Bully Camp Field, being defined herein as the oil and gas bearing Sand encountered between the depth of 10,156 feet and 10,178 feet (induction-electric log measurement) in the Exxon Benquin Corporation Well No. 1 Well located in Section 55, Township 18 South, Range 21 East, Lafourche Parish, Louisiana, as it pertains only to Section 24, Township 18 South, Range 20 East and **LESS AND EXCEPT** that portion, if any, that lies within the Pointe Aux Chenes State Wildlife Management Area, containing approximately **42 acres**, all as more particularly outlined on a plat on file in the Office of Mineral Resources, Department of Natural Resources. All bearings, distances and coordinates are based on Louisiana Coordinate System of 1927, (North or South Zone), where applicable.

NOTE: The above description of the Tract nominated for lease has been provided and corrected, where required, exclusively by the nomination party. Any mineral lease selected from this Tract and awarded by the Louisiana State Mineral Board shall be without warranty of any kind, either express, implied, or statutory, including, but not limited to, the implied warranties of merchantability and fitness for a particular purpose. Should the mineral lease awarded by the Louisiana State Mineral Board be subsequently modified, cancelled or abrogated due to the existence of conflicting leases, operating agreements, private claims or

other future obligations or conditions which may affect all or any portion of the leased Tract, it shall not relieve the Lessee of the obligation to pay any bonus due thereon to the Louisiana State Mineral Board, nor shall the Louisiana State Mineral Board be obligated to refund any consideration paid by the Lessor prior to such modification, cancellation, or abrogation, including, but not limited to, bonuses, rentals and royalties.

NOTE: The State of Louisiana does hereby reserve, and this lease shall be subject to, the imprescriptible right of surface use in the nature of a servitude in favor of the Department of Natural Resources, including its Offices and Commissions, for the sole purpose of implementing, constructing, servicing and maintaining approved coastal zone management and/or restoration projects. Utilization of any and all rights derived under this lease by the mineral lessee, its agents, successors or assigns, shall not interfere with nor hinder the reasonable surface use by the Department of Natural Resources, its Offices or Commissions, as herein above reserved.

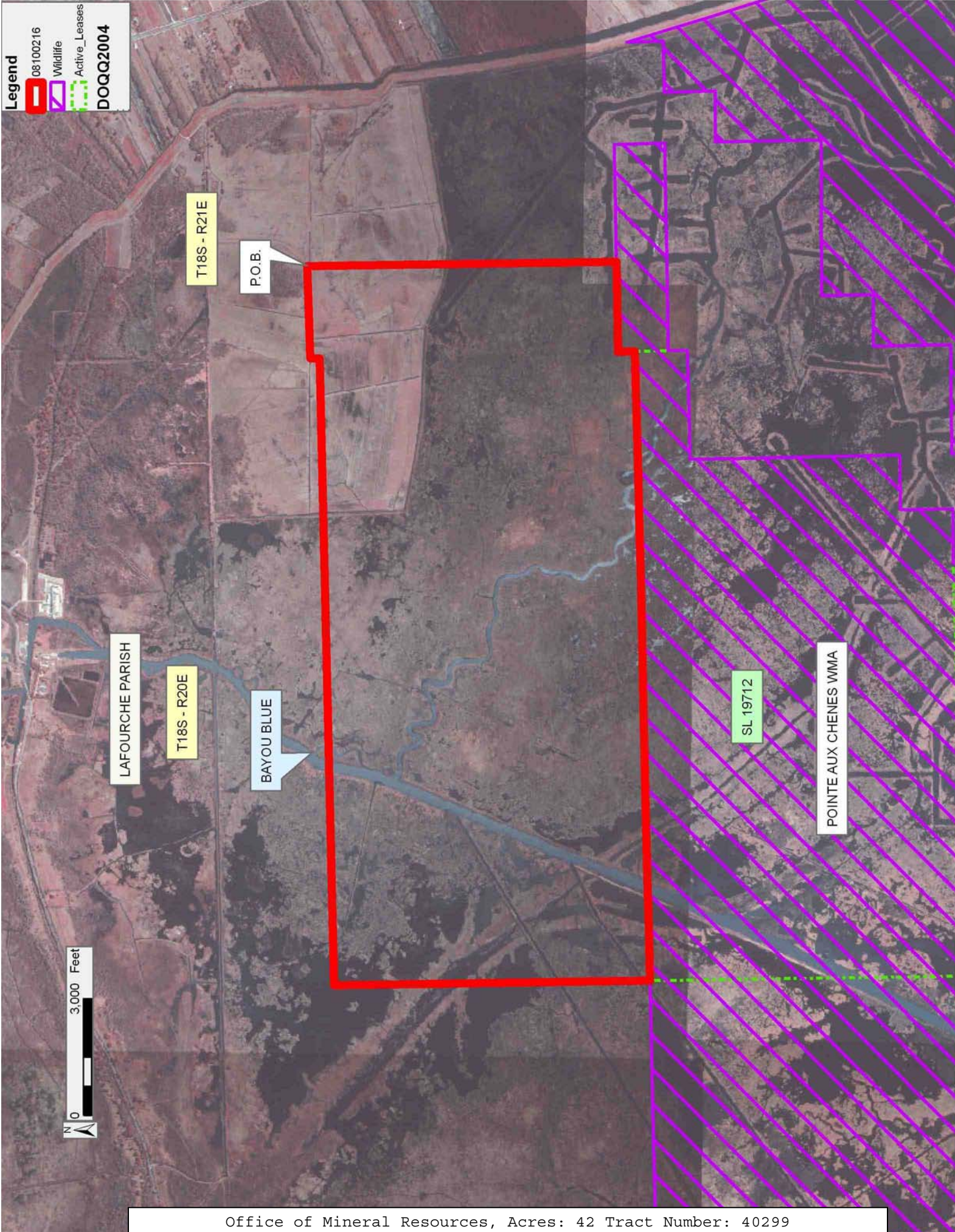
Applicant: STARKS OIL CORPORATION

Bidder	Cash Payment	Price/Acre	Rental	Oil	Gas	Other

Legend

- 08100216
- Wildlife
- Active_Leases

DOQQ2004



LAFOURCHE PARISH

T18S - R20E

T18S - R21E

BAYOU BLUE

P.O.B.

SL 19712

POINTE AUX CHENES WMA