

TRACT 40280 - Cameron Parish, Louisiana

All of the lands now or formerly constituting the beds and bottoms of all water bodies of every nature and description as to which title is vested in the State of Louisiana, together with all islands arising therein and other lands formed by accretion or by reliction, where allowed by law, excepting tax adjudicated lands, and not presently under mineral lease on October 8, 2008, situated in Cameron Parish, Louisiana, and more particularly described as follows: Beginning at a point having Coordinates of X = 1,211,850.00 and Y = 439,586.00; thence South 8,881.00.00 feet to a point having Coordinates of X = 1,211,850.00 and Y = 430,705.00; thence West 10,890.00 feet to a point having Coordinates of X = 1,200,960.00 and Y = 430,705.00; thence North 8,881.00 feet to a point on the Southern boundary of State Lease No. 19067 having Coordinates of X = 1,200,960.00 and Y = 439,586.00; thence East 5,920.00 feet along the Southern boundary of said State Lease No. 19067 to its Southeast corner having Coordinates of X = 1,206,880.00 and Y = 439,586.00; thence East 4,970.00 feet to the point of beginning, containing **2,220.25 acres**, all as more particularly outlined on a plat on file in the Office of Mineral Resources, Department of Natural Resources. All bearings, distances and coordinates are based on Louisiana Coordinate System of 1927, (North or South Zone), where applicable.

NOTE: The above description of the Tract nominated for lease has been provided and corrected, where required, exclusively by the nomination party. Any mineral lease selected from this Tract and awarded by the Louisiana State Mineral Board shall be without warranty of any kind, either express, implied, or statutory, including, but not limited to, the implied warranties of merchantability and fitness for a particular purpose. Should the mineral lease awarded by the Louisiana State Mineral Board be subsequently modified, cancelled or abrogated due to the existence of conflicting leases, operating agreements, private claims or other future obligations or conditions which may affect all or any portion of the leased Tract, it shall not relieve the Lessee of the obligation to pay any bonus due thereon to the Louisiana State Mineral Board, nor shall the Louisiana State Mineral Board be obligated to refund any consideration paid by the Lessor prior to such modification, cancellation, or abrogation, including, but not limited to, bonuses, rentals and royalties.

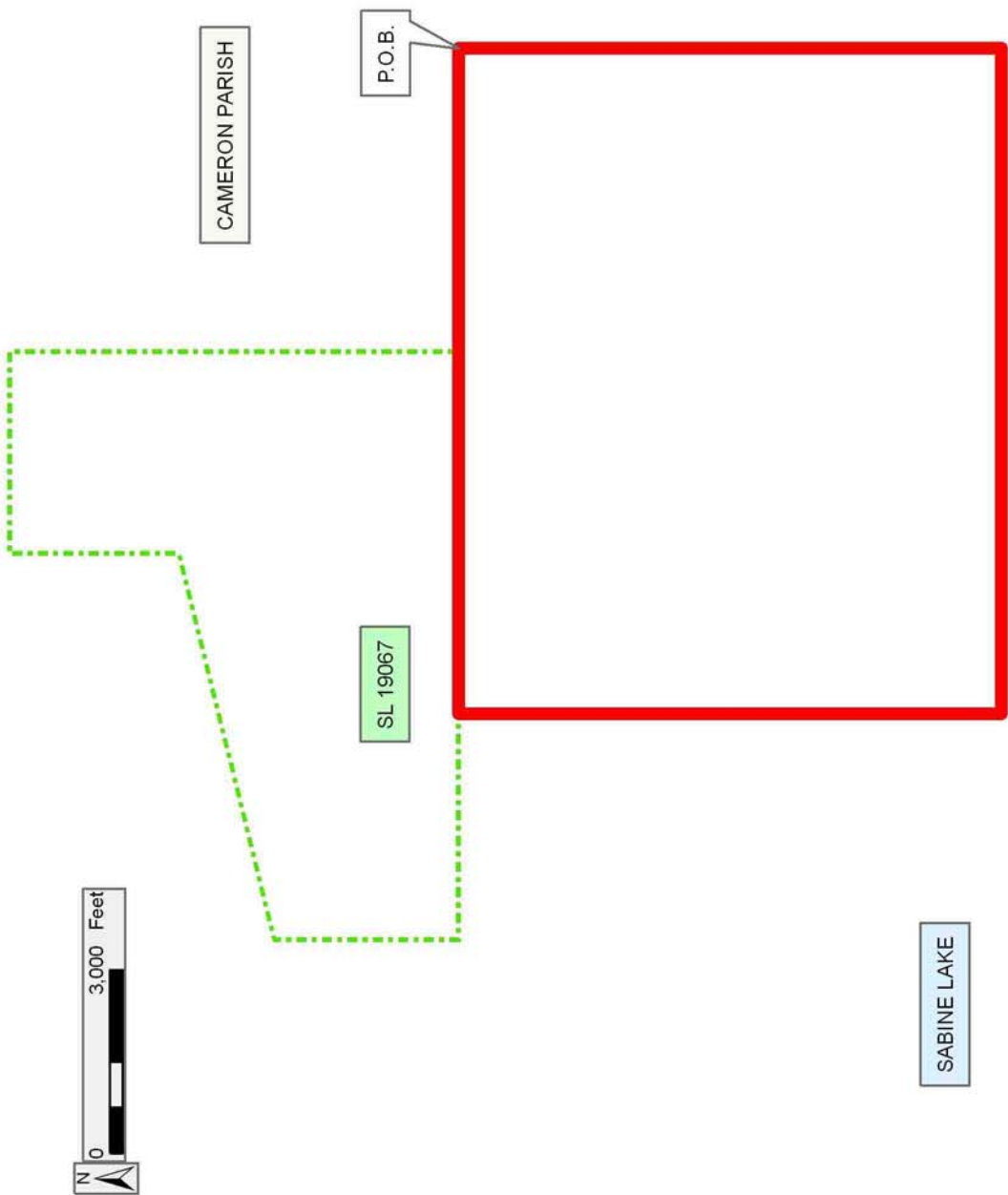
NOTE: The State of Louisiana does hereby reserve, and this lease shall be subject to, the imprescriptible right of surface use in the nature of a servitude in favor of the Department of Natural Resources, including its Offices and Commissions, for the sole purpose of implementing, constructing, servicing and maintaining approved coastal zone management and/or restoration projects. Utilization of any and all rights derived under this lease by the mineral lessee, its agents, successors or assigns, shall not interfere with nor hinder the reasonable surface use by the Department of Natural Resources, its Offices or Commissions, as herein above reserved.

Applicant: SUNCOAST LAND SERVICES, INC.

Bidder	Cash Payment	Price/Acre	Rental	Oil	Gas	Other

Legend

-  08100196
-  Active_Leases



TRACT 40281 - Cameron Parish, Louisiana

All of the lands now or formerly constituting the beds and bottoms of all water bodies of every nature and description as to which title is vested in the State of Louisiana, together with all islands arising therein and other lands formed by accretion or by reliction, where allowed by law, excepting tax adjudicated lands, and not presently under mineral lease on October 8, 2008, situated in Cameron Parish, Louisiana, and more particularly described as follows: Beginning at a point having Coordinates of X = 1,192,355.00 and Y = 439,586.00; thence South 11,236.00 feet to a point having Coordinates of X = 1,192,355.00 and Y = 428,350.00; thence West 2,319.84 feet to the Northeast corner of State Lease No. 19071 having Coordinates of X = 1,190,035.16 and Y = 428,350.00; thence West 4,000.01 feet along the North boundary of said State Lease No. 19071 to its Northwest corner having Coordinates of X = 1,186,035.15 and Y = 428,350.00; thence West 7,376.49 feet to a point on the Texas-Louisiana boundary having Coordinates of X = 1,178,658.66 and Y = 428,350.00; thence along said Texas-Louisiana boundary the following courses: North 21 degrees 23 minutes 27 seconds East 1,251.19 feet to a point having Coordinates of X = 1,179,115.00 and Y = 429,515.00; North 37 degrees 11 minutes 18 seconds East 2,159.03 feet to a point having Coordinates of X = 1,180,420.00 and Y = 431,235.00; North 44 degrees 11 minutes 15 seconds East 997.12 feet to a point having Coordinates of X = 1,181,115.00 and Y = 431,950.00; North 58 degrees 03 minutes 42 seconds East 907.36 feet to a point having Coordinates of X = 1,181,885.00 and Y = 432,430.00; North 43 degrees 06 minutes 18 seconds East 3,848.77 feet to a point having Coordinates of X = 1,184,515.00 and Y = 435,240.00; North 48 degrees 43 minutes 09 seconds East 5,395.98 feet to a point having Coordinates of X = 1,188,570.00 and Y = 438,800.00; North 52 degrees 24 minutes 41 seconds East 1,288.55 feet to a point having Coordinates of X = 1,189,591.07 and Y = 439,586.00; thence East 2,763.94 feet to the point of beginning, containing **2,291.74 acres, LESS AND EXCEPT** that portion thereof, if any, located West of the boundary line between the States of Texas and Louisiana as determined by the report of the Special Master and adjudicated by the Supreme Court of the United States in litigation styled **Texas v. Louisiana, et al No. 36 Original**, or as otherwise approved by said court, all as more particularly outlined on a plat on file in the Office of Mineral Resources, Department of Natural Resources. All bearings, distances and coordinates are based on Louisiana Coordinate System of 1927, (North or South Zone), where applicable.

NOTE: The above description of the Tract nominated for lease has been provided and corrected, where required, exclusively by the nomination party. Any mineral lease selected from this Tract and awarded by the Louisiana State Mineral Board shall be without warranty of any kind, either express, implied, or statutory, including, but not limited to, the implied warranties of merchantability and fitness for a particular purpose. Should the mineral lease awarded by the Louisiana State Mineral Board be subsequently modified, cancelled or abrogated due to the existence of conflicting leases, operating agreements, private claims or

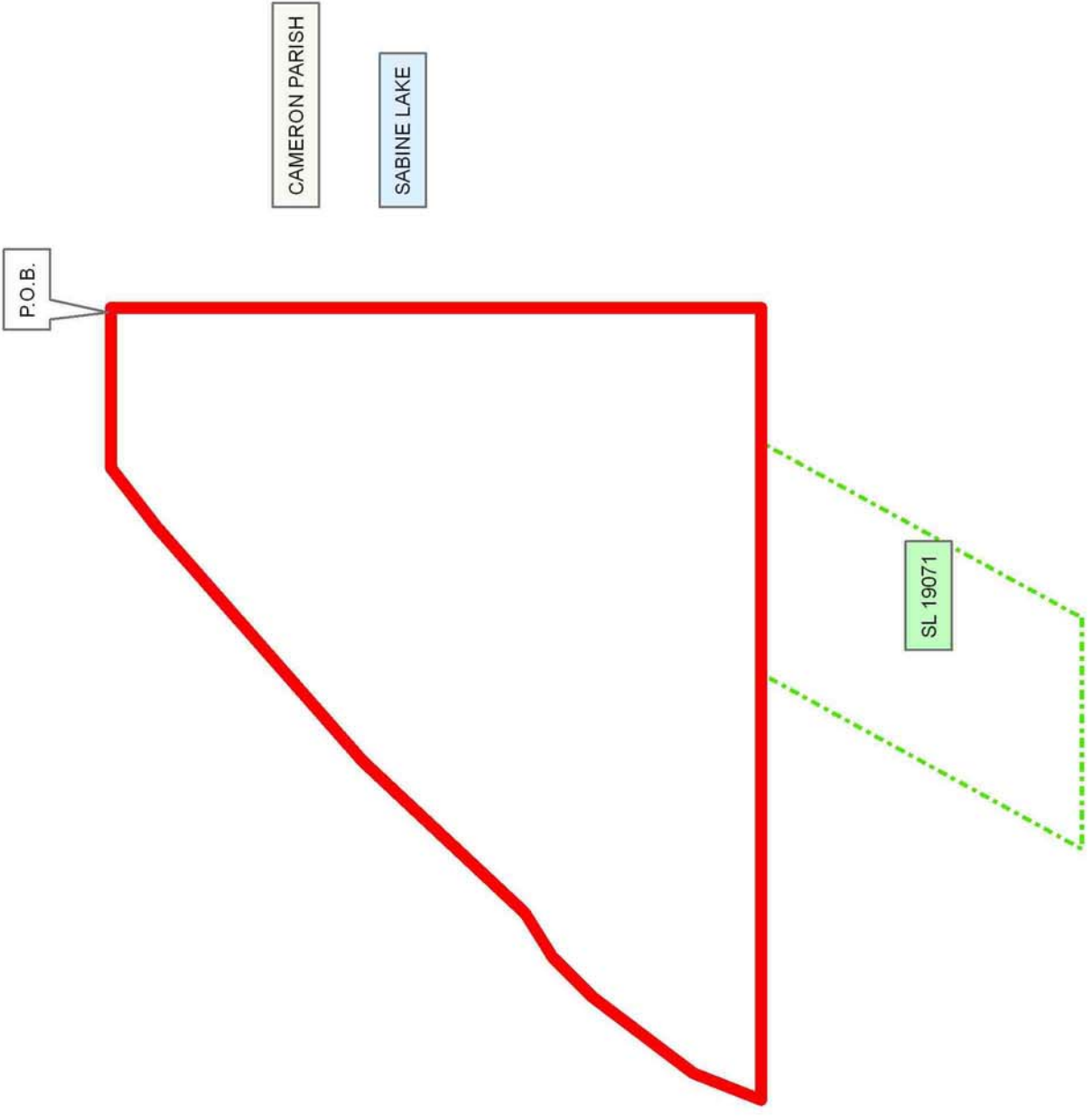
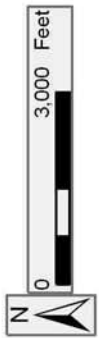
other future obligations or conditions which may affect all or any portion of the leased Tract, it shall not relieve the Lessee of the obligation to pay any bonus due thereon to the Louisiana State Mineral Board, nor shall the Louisiana State Mineral Board be obligated to refund any consideration paid by the Lessor prior to such modification, cancellation, or abrogation, including, but not limited to, bonuses, rentals and royalties.

NOTE: The State of Louisiana does hereby reserve, and this lease shall be subject to, the imprescriptible right of surface use in the nature of a servitude in favor of the Department of Natural Resources, including its Offices and Commissions, for the sole purpose of implementing, constructing, servicing and maintaining approved coastal zone management and/or restoration projects. Utilization of any and all rights derived under this lease by the mineral lessee, its agents, successors or assigns, shall not interfere with nor hinder the reasonable surface use by the Department of Natural Resources, its Offices or Commissions, as herein above reserved.

Applicant: SUNCOAST LAND SERVICES, INC.

Bidder	Cash Payment	Price/Acre	Rental	Oil	Gas	Other

Legend
08100197
Active_Leases



TRACT 40282 - Cameron Parish, Louisiana

All of the lands now or formerly constituting the beds and bottoms of all water bodies of every nature and description as to which title is vested in the State of Louisiana, together with all islands arising therein and other lands formed by accretion or by reliction, where allowed by law, excepting tax adjudicated lands, and not presently under mineral lease on October 8, 2008, situated in Cameron Parish, Louisiana, and more particularly described as follows: Beginning at a point having Coordinates of X = 1,192,355.00 and Y = 439,586.00; thence East 2,205.00 feet to a point on the West boundary of State Lease No. 19095 having Coordinates of X = 1,194,560.00 and Y = 439,586.00; thence along the boundary of said State Lease No. 19095 the following courses: South 1,616.00 feet to its Southwest corner having Coordinates of X = 1,194,560.00 and Y = 437,970.00; East 3,400.00 feet to its Southeast corner having Coordinates of X = 1,197,960.00 and Y = 437,970.00 and North 1,616.00 feet to a point on the South boundary of State Lease No. 19067 having Coordinates of X = 1,197,960.00 and Y = 439,586.00; thence East 3,000.00 feet along the South boundary of said State Lease No. 19067 to a point having Coordinates of X = 1,200,960.00 and Y = 439,586.00; thence South 11,236.00 feet to a point having Coordinates of X = 1,200,960.00 and Y = 428,350.00; thence West 8,605.00 feet to a point having Coordinates of X = 1,192,355.00 and Y = 428,350.00; thence North 11,236.00 feet to the point of beginning, containing **2,093.47 acres**, all as more particularly outlined on a plat on file in the Office of Mineral Resources, Department of Natural Resources. All bearings, distances and coordinates are based on Louisiana Coordinate System of 1927, (North or South Zone), where applicable.

NOTE: The above description of the Tract nominated for lease has been provided and corrected, where required, exclusively by the nomination party. Any mineral lease selected from this Tract and awarded by the Louisiana State Mineral Board shall be without warranty of any kind, either express, implied, or statutory, including, but not limited to, the implied warranties of merchantability and fitness for a particular purpose. Should the mineral lease awarded by the Louisiana State Mineral Board be subsequently modified, cancelled or abrogated due to the existence of conflicting leases, operating agreements, private claims or other future obligations or conditions which may affect all or any portion of the leased Tract, it shall not relieve the Lessee of the obligation to pay any bonus due thereon to the Louisiana State Mineral Board, nor shall the Louisiana State Mineral Board be obligated to refund any consideration paid by the Lessor prior to such modification, cancellation, or abrogation, including, but not limited to, bonuses, rentals and royalties.

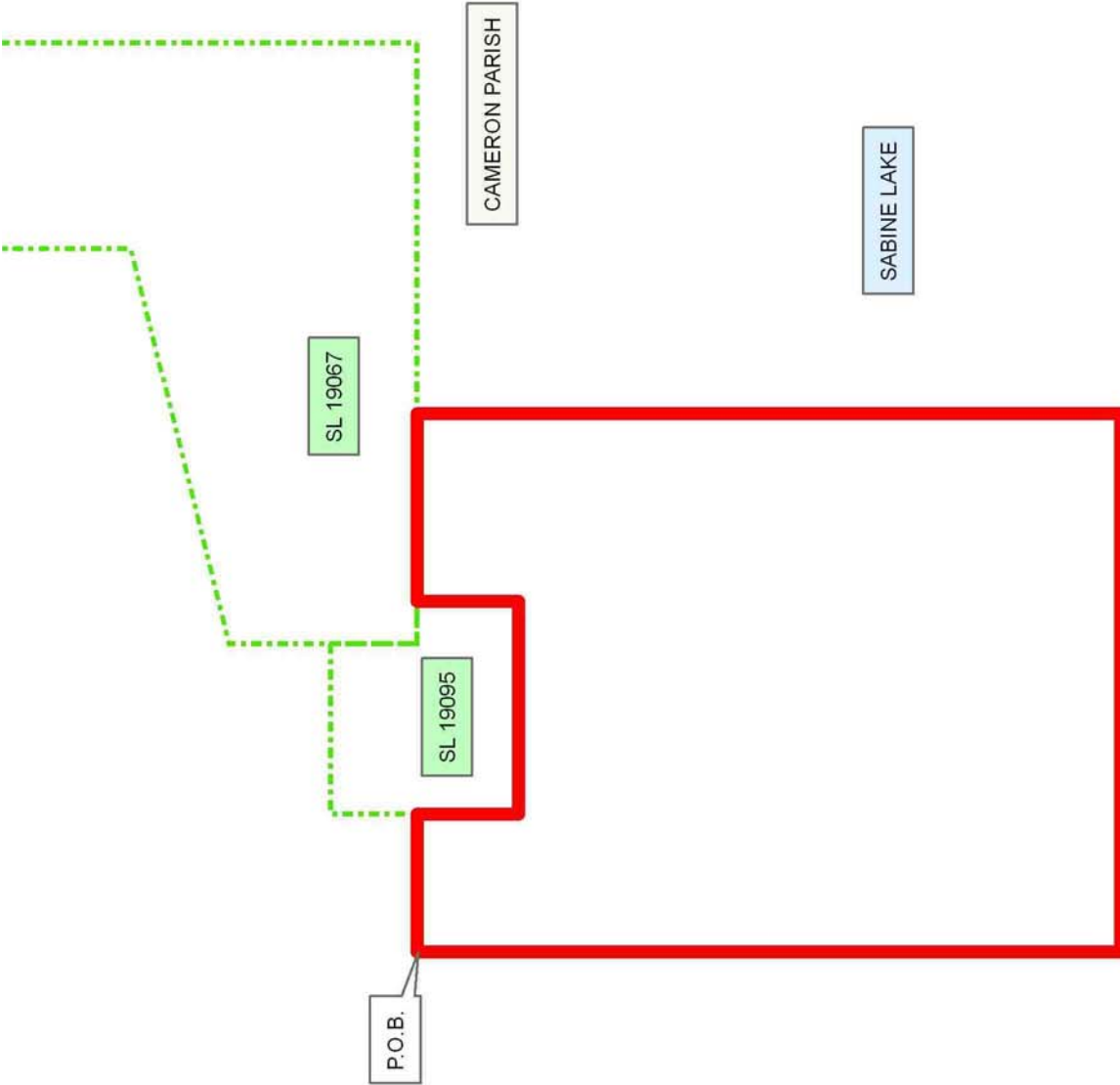
NOTE: The State of Louisiana does hereby reserve, and this lease shall be subject to, the imprescriptible right of surface use in the nature of a servitude in favor of the Department of Natural Resources, including its Offices and Commissions, for the sole purpose of implementing, constructing, servicing and maintaining approved coastal zone management and/or restoration projects. Utilization of any and all rights derived

under this lease by the mineral lessee, its agents, successors or assigns, shall not interfere with nor hinder the reasonable surface use by the Department of Natural Resources, its Offices or Commissions, as herein above reserved.

Applicant: SUNCOAST LAND SERVICES, INC.

Bidder	Cash Payment	Price/Acre	Rental	Oil	Gas	Other

Legend
08100195
Active_Leases



TRACT 40283 - Cameron Parish, Louisiana

All of the lands now or formerly constituting the beds and bottoms of all water bodies of every nature and description as to which title is vested in the State of Louisiana, together with all islands arising therein and other lands formed by accretion or by reliction, where allowed by law, excepting tax adjudicated lands, and not presently under mineral lease on October 8, 2008, situated in Cameron Parish, Louisiana, and more particularly described as follows: Beginning at a point having Coordinates of X = 1,200,960.00 and Y = 428,350.00; thence South 8,800.00 feet to a point having Coordinates of X = 1,200,960.00 and Y = 419,550.00; thence West 10,924.84 feet to a point having Coordinates of X = 1,190,035.16 and Y = 419,550.00; thence North 8,800.00 feet to the Northeast corner of State Lease No. 19071 having Coordinates of X = 1,190,035.16 and Y = 428,350.00; thence East 10,924.84 feet to the point of beginning, containing approximately **965 acres**, all as more particularly outlined on a plat on file in the Office of Mineral Resources, Department of Natural Resources. All bearings, distances and coordinates are based on Louisiana Coordinate System of 1927, (North or South Zone), where applicable.

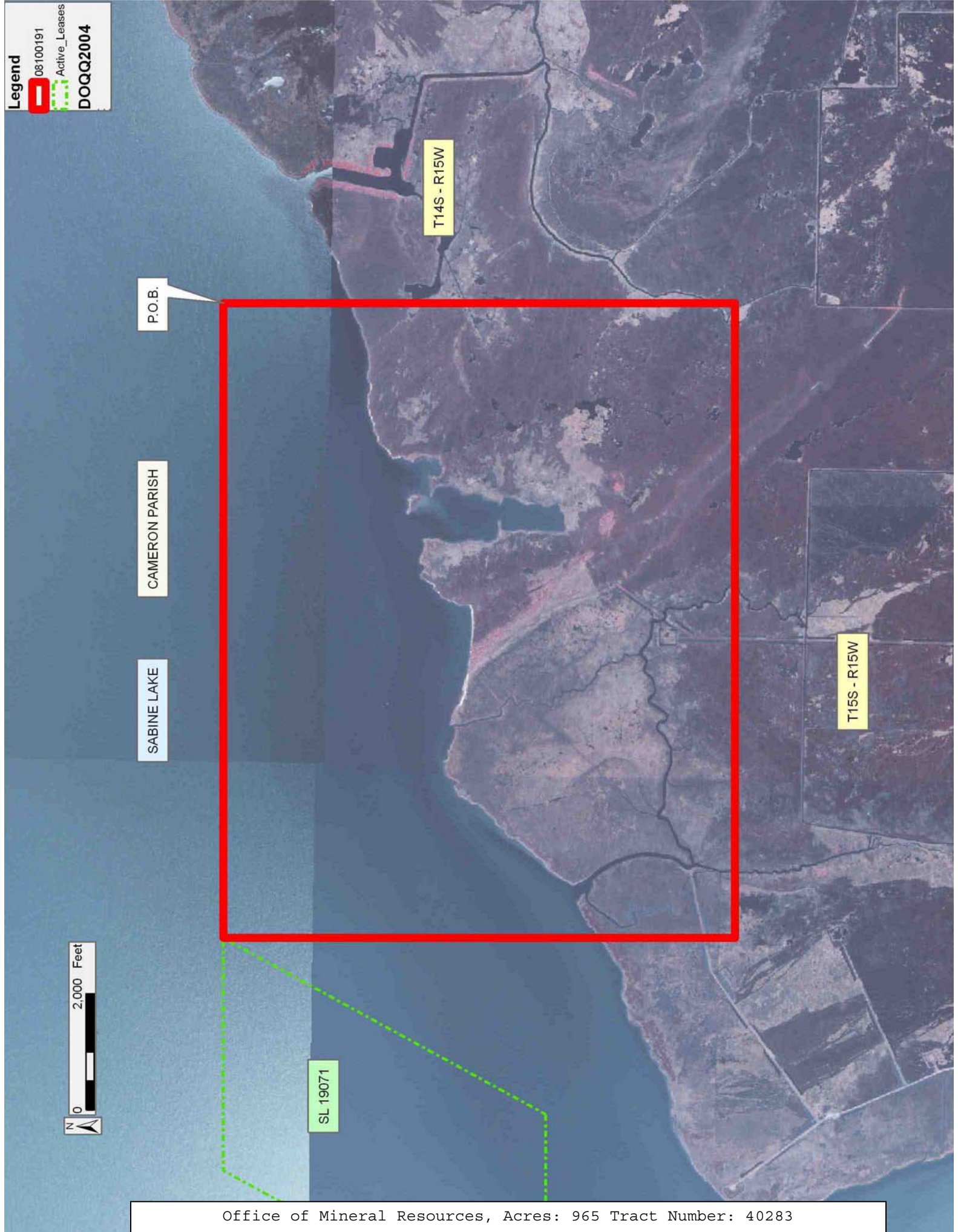
NOTE: The above description of the Tract nominated for lease has been provided and corrected, where required, exclusively by the nomination party. Any mineral lease selected from this Tract and awarded by the Louisiana State Mineral Board shall be without warranty of any kind, either express, implied, or statutory, including, but not limited to, the implied warranties of merchantability and fitness for a particular purpose. Should the mineral lease awarded by the Louisiana State Mineral Board be subsequently modified, cancelled or abrogated due to the existence of conflicting leases, operating agreements, private claims or other future obligations or conditions which may affect all or any portion of the leased Tract, it shall not relieve the Lessee of the obligation to pay any bonus due thereon to the Louisiana State Mineral Board, nor shall the Louisiana State Mineral Board be obligated to refund any consideration paid by the Lessor prior to such modification, cancellation, or abrogation, including, but not limited to, bonuses, rentals and royalties.

NOTE: The State of Louisiana does hereby reserve, and this lease shall be subject to, the imprescriptible right of surface use in the nature of a servitude in favor of the Department of Natural Resources, including its Offices and Commissions, for the sole purpose of implementing, constructing, servicing and maintaining approved coastal zone management and/or restoration projects. Utilization of any and all rights derived under this lease by the mineral lessee, its agents, successors or assigns, shall not interfere with nor hinder the reasonable surface use by the Department of Natural Resources, its Offices or Commissions, as herein above reserved.

Applicant: SUNCOAST LAND SERVICES, INC.

Bidder	Cash Payment	Price/Acre	Rental	Oil	Gas	Other

Legend
08100191
Active_Leases
DOQQ2004



TRACT 40284 - Cameron Parish, Louisiana

All of the lands now or formerly constituting the beds and bottoms of all water bodies of every nature and description as to which title is vested in the State of Louisiana, together with all islands arising therein and other lands formed by accretion or by reliction, where allowed by law, excepting tax adjudicated lands, and not presently under mineral lease on October 8, 2008, situated in Cameron Parish, Louisiana, and more particularly described as follows: Beginning at the Northwest corner of State Lease No. 19071 having Coordinates of X = 1,186,035.15 and Y = 428,350.00; thence along the boundary of said State Lease No. 19071 the following courses: South 28 degrees 40 minutes 23 seconds West 6,325.71 feet to its Southwest corner having Coordinates of X = 1,183,000.00 and Y = 422,800.00; East 4,000.00 feet to its Southeast corner having Coordinates of X = 1,187,000.00 and Y = 422,800.00 and North 28 degrees 40 minutes 23 seconds East 6,325.72 feet to its Northeast corner having Coordinates of X = 1,190,035.16 and Y = 428,350.00; thence South 8,800.00 feet to a point having Coordinates of X = 1,190,035.16 and Y = 419,550.00; thence West 12,839.87 feet to a point on the Texas-Louisiana boundary having Coordinates of X = 1,177,195.29 and Y = 419,550.00; thence along said Texas-Louisiana boundary the following courses: North 00 degrees 34 minutes 06 seconds West 3,760.19 feet to a point having Coordinates of X = 1,177,158.00 and Y = 423,310.00; North 11 degrees 17 minutes 15 seconds East 2,513.62 feet to a point having Coordinates of X = 1,177,650.00 and Y = 425,775.00 and North 21 degrees 23 minutes 27 seconds East 2,765.50 feet to a point having Coordinates of X = 1,178,658.66 and Y = 428,350.00; thence East 7,376.49 feet to the point of beginning, containing approximately **1,864 acres, LESS AND EXCEPT** that portion thereof, if any, located West of the boundary line between the States of Texas and Louisiana as determined by the report of the Special Master and adjudicated by the Supreme Court of the United States in litigation styled **Texas v. Louisiana, et al No. 36 Original**, or as otherwise approved by said court, all as more particularly outlined on a plat on file in the Office of Mineral Resources, Department of Natural Resources. All bearings, distances and coordinates are based on Louisiana Coordinate System of 1927, (North or South Zone), where applicable.

NOTE: The above description of the Tract nominated for lease has been provided and corrected, where required, exclusively by the nomination party. Any mineral lease selected from this Tract and awarded by the Louisiana State Mineral Board shall be without warranty of any kind, either express, implied, or statutory, including, but not limited to, the implied warranties of merchantability and fitness for a particular purpose. Should the mineral lease awarded by the Louisiana State Mineral Board be subsequently modified, cancelled or abrogated due to the existence of conflicting leases, operating agreements, private claims or other future obligations or conditions which may affect all or any portion of the leased Tract, it shall not relieve the Lessee of the obligation to pay any bonus due thereon to the Louisiana State Mineral Board, nor shall the Louisiana State Mineral Board be obligated to refund any consideration

paid by the Lessor prior to such modification, cancellation, or abrogation, including, but not limited to, bonuses, rentals and royalties.

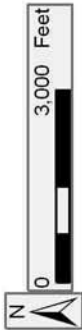
NOTE: The State of Louisiana does hereby reserve, and this lease shall be subject to, the imprescriptible right of surface use in the nature of a servitude in favor of the Department of Natural Resources, including its Offices and Commissions, for the sole purpose of implementing, constructing, servicing and maintaining approved coastal zone management and/or restoration projects. Utilization of any and all rights derived under this lease by the mineral lessee, its agents, successors or assigns, shall not interfere with nor hinder the reasonable surface use by the Department of Natural Resources, its Offices or Commissions, as herein above reserved.

Applicant: SUNCOAST LAND SERVICES, INC.

Bidder	Cash Payment	Price/Acre	Rental	Oil	Gas	Other

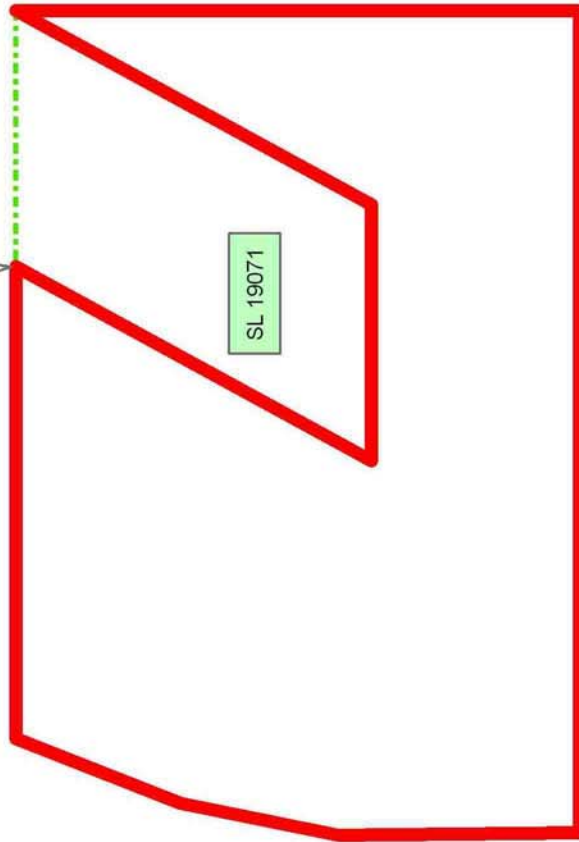
Legend

- 08100193
- Active_Leases



CAMERON PARISH

P.O.B.



SABINE LAKE

TRACT 40285 - Cameron Parish, Louisiana

All of the lands now or formerly constituting the beds and bottoms of all water bodies of every nature and description as to which title is vested in the State of Louisiana, together with all islands arising therein and other lands formed by accretion or by reliction, where allowed by law, excepting tax adjudicated lands, and not presently under mineral lease on October 8, 2008, situated in Cameron Parish, Louisiana, and more particularly described as follows: Beginning at a point having Coordinates of X = 1,512,900.00 and Y = 407,696.00; thence West 10,328.00 feet to the Northeast corner of State Lease No. 18968 having Coordinates of X = 1,502,572.00 and Y = 407,696.00; thence West 2,300.00 feet along the North line of said State Lease No. 18969 to its Northwest corner, said corner also being the Northeast corner of State Lease No. 18967, having Coordinates of X = 1,500,272.00 and Y = 407,696.00; thence West 2,300.00 feet along the North line of said State Lease No. 18967 to a point having Coordinates of X = 1,497,972.00 and Y = 407,696.00; thence North 10,464.50 feet to a point on the South line of State Lease No. 18836 having Coordinates of X = 1,497,972.00 and Y = 418,160.50; thence South 88 degrees 33 minutes 57 seconds East 2,995.61 feet along the South line of said State Lease No. 18836 to its Southeast corner, said corner also being the Southwest corner of State Lease No. 18837, having Coordinates of X = 1,500,966.67 and Y = 418,085.52; thence South 88 degrees 33 minutes 57 seconds East 8,536.00 feet along the South line of said State Lease No. 18837 to its Southeast corner having Coordinates of X = 1,509,500.00 and Y = 417,871.87; thence East 3,400.00 feet to a point having Coordinates of X = 1,512,900.00 and Y = 417,871.87; thence South 10,175.87 feet to the Point of Beginning, containing approximately **616 acres**, all as more particularly outlined on a plat on file in the Office of Mineral Resources, Department of Natural Resources. All bearings, distances and coordinates are based on Louisiana Coordinate System of 1927, (North or South Zone), where applicable.

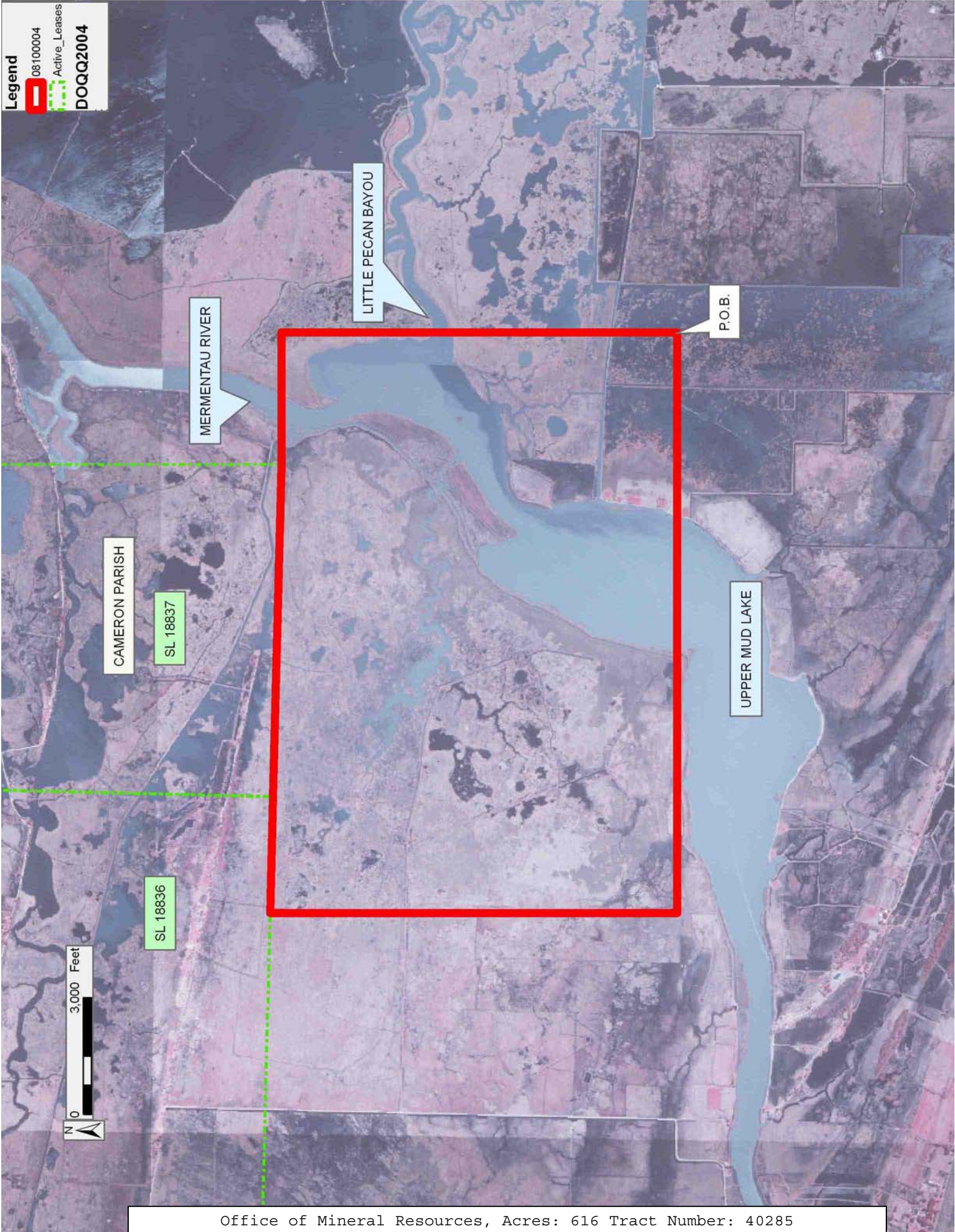
NOTE: The above description of the Tract nominated for lease has been provided and corrected, where required, exclusively by the nomination party. Any mineral lease selected from this Tract and awarded by the Louisiana State Mineral Board shall be without warranty of any kind, either express, implied, or statutory, including, but not limited to, the implied warranties of merchantability and fitness for a particular purpose. Should the mineral lease awarded by the Louisiana State Mineral Board be subsequently modified, cancelled or abrogated due to the existence of conflicting leases, operating agreements, private claims or other future obligations or conditions which may affect all or any portion of the leased Tract, it shall not relieve the Lessee of the obligation to pay any bonus due thereon to the Louisiana State Mineral Board, nor shall the Louisiana State Mineral Board be obligated to refund any consideration paid by the Lessor prior to such modification, cancellation, or abrogation, including, but not limited to, bonuses, rentals and royalties.

NOTE: The State of Louisiana does hereby reserve, and this lease shall be subject to, the imprescriptible right of surface use in the nature of a servitude in favor of the Department of Natural Resources, including its Offices and Commissions, for the sole purpose of implementing, constructing, servicing and maintaining approved coastal zone management and/or restoration projects. Utilization of any and all rights derived under this lease by the mineral lessee, its agents, successors or assigns, shall not interfere with nor hinder the reasonable surface use by the Department of Natural Resources, its Offices or Commissions, as herein above reserved.

Applicant: CRESCENT RESOURCES, LLC

Bidder	Cash Payment	Price/Acre	Rental	Oil	Gas	Other

Legend
08100004
Active_Leases
DOQQ2004



TRACT 40286 - Portion of Block 70, Chandeleur Sound Area, St. Bernard Parish, Louisiana

All of the lands now or formerly constituting the beds and bottoms of all water bodies of every nature and description as to which title is vested in the State of Louisiana, together with all islands arising therein and other lands formed by accretion or by reliction, where allowed by law, excepting tax adjudicated lands, and not presently under mineral lease on October 8, 2008, situated in St. Bernard Parish, Louisiana, and more particularly described as follows: Beginning at the Northwest corner of Block 70, Chandeleur Sound Area, having Coordinates of X = 2,620,600.00 and Y = 396,080.00; thence East 14,750.00 feet along the North line of said Block 70 to its Northeast corner having Coordinates of X = 2,635,350.00 and Y = 396,080.00; thence South 7,375.00 feet along the East line of said Block 70 to the Northeast corner of State Lease No. 16798 having Coordinates of X = 2,635,350.00 and Y = 388,705.00; thence West 4,332.00 feet along the North boundary of said State Lease No. 16798 to its Northwest corner having Coordinates of X = 2,631,018.00 and Y = 388,705.00; thence West 10,418.00 feet to a point on the West line of said Block 70 having Coordinates of X = 2,620,600.00 and Y = 388,705.00; thence North 7,375.00 feet along the West line of said Block 70 to the point of beginning, **LESS AND EXCEPT** Operating Agreement 0124 that lies entirely within the above described tract, more particularly described as follows: Commencing at the point of beginning of the above described tract having Coordinates of X = 2,620,600.00 and Y = 396,080.00; thence South 41 degrees 03 minutes 32 seconds East 8,038.56 feet to the Southwest corner of said Operating Agreement 0124 having Coordinates of X = 2,625,880.00 and Y = 390,018.65; thence along the boundary of said Operating Agreement 0124 the following courses: North 1,700.00 feet to a point having Coordinates of X = 2,625,880.00 and Y = 391,718.65; East 2,300.00 feet to a point having Coordinates of X = 2,628,180.00 and Y = 391,718.65; South 1,700.00 feet to a point having Coordinates of X = 2,628,180.00 and Y = 390,018.65; West 2,300.00 feet back to its Southwest corner, the above described tract containing approximately **2,383 acres**, all as more particularly outlined on a plat on file in the Office of Mineral Resources, Department of Natural Resources. All bearings, distances and coordinates are based on Louisiana Coordinate System of 1927, (North or South Zone), where applicable.

NOTE: The above description of the Tract nominated for lease has been provided and corrected, where required, exclusively by the nomination party. Any mineral lease selected from this Tract and awarded by the Louisiana State Mineral Board shall be without warranty of any kind, either express, implied, or statutory, including, but not limited to, the implied warranties of merchantability and fitness for a particular purpose. Should the mineral lease awarded by the Louisiana State Mineral Board be subsequently modified, cancelled or abrogated due to the existence of conflicting leases, operating agreements, private claims or other future obligations or conditions which may affect all or any portion of the leased Tract, it shall not relieve the Lessee of the obligation to

pay any bonus due thereon to the Louisiana State Mineral Board, nor shall the Louisiana State Mineral Board be obligated to refund any consideration paid by the Lessor prior to such modification, cancellation, or abrogation, including, but not limited to, bonuses, rentals and royalties.

NOTE: The State of Louisiana does hereby reserve, and this lease shall be subject to, the imprescriptible right of surface use in the nature of a servitude in favor of the Department of Natural Resources, including its Offices and Commissions, for the sole purpose of implementing, constructing, servicing and maintaining approved coastal zone management and/or restoration projects. Utilization of any and all rights derived under this lease by the mineral lessee, its agents, successors or assigns, shall not interfere with nor hinder the reasonable surface use by the Department of Natural Resources, its Offices or Commissions, as herein above reserved.

NOTE: The Department of Wildlife and Fisheries has designated certain areas in the coastal waters of the State of Louisiana as Oyster Seed Bed Areas. The exact location of those Seed Bed Areas must be obtained from the Department of Wildlife and Fisheries and any work done under a mineral lease from the State of Louisiana may necessarily be conducted in conformity with the rules and regulations promulgated by the said Department of Wildlife and Fisheries for Oyster Seed Bed Areas.

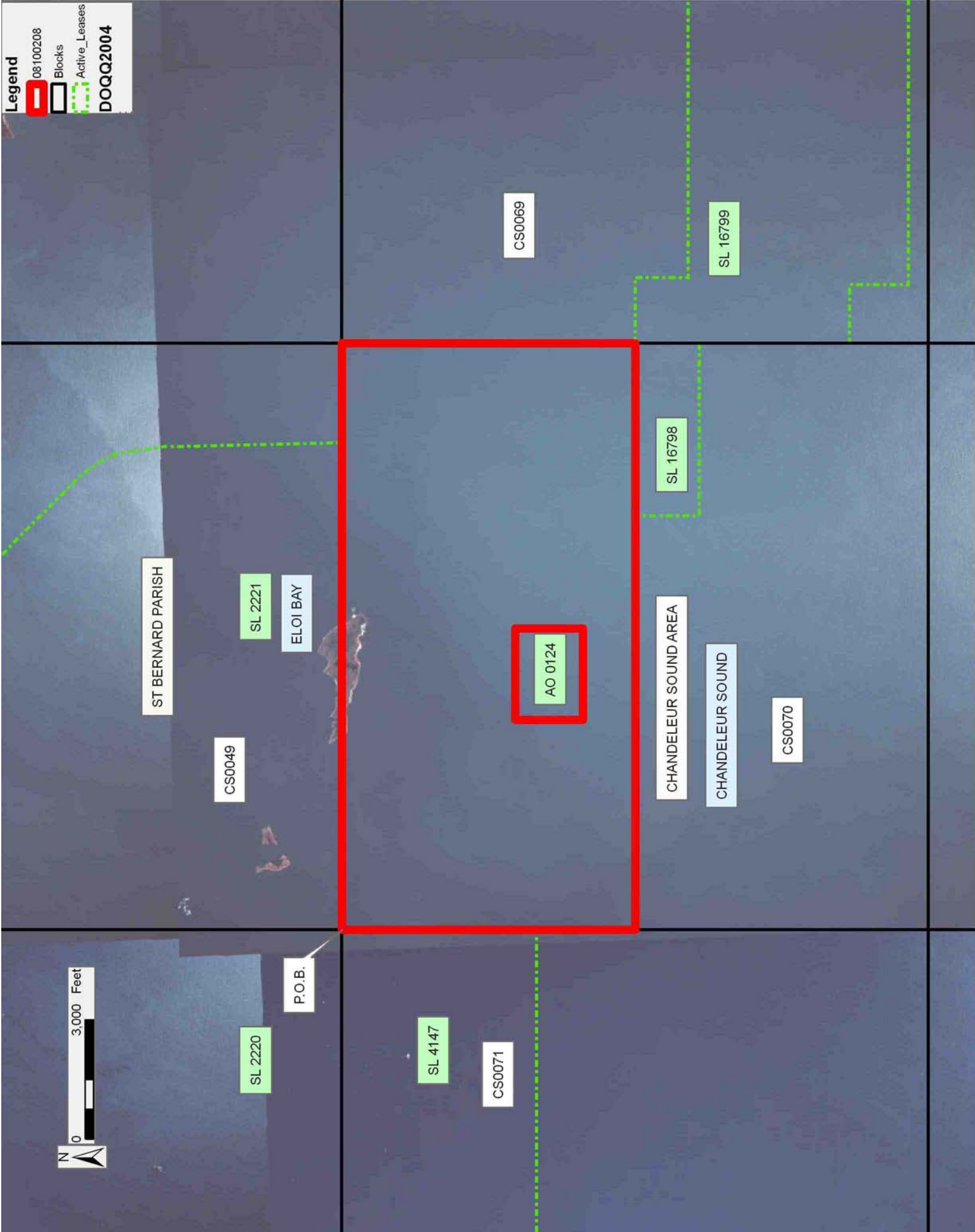
Applicant: MINERAL SERVICES, INC.

Bidder	Cash Payment	Price/Acre	Rental	Oil	Gas	Other

Legend

- 08100208
- Blocks
- Active_Leases

DOQQ2004



TRACT 40287 - Portion of Block 70, Chandeleur Sound Area, St. Bernard Parish, Louisiana

All of the lands now or formerly constituting the beds and bottoms of all water bodies of every nature and description as to which title is vested in the State of Louisiana, together with all islands arising therein and other lands formed by accretion or by reliction, where allowed by law, excepting tax adjudicated lands, and not presently under mineral lease on October 8, 2008, situated in St. Bernard Parish, Louisiana, and more particularly described as follows: Beginning at a point on the West line of Block 70, Chandeleur Sound Area, having Coordinates of X = 2,620,600.00 and Y = 388,705.00; thence East 10,418.00 feet to the Northwest corner of State Lease No. 16798 having Coordinates of X = 2,631,018.00 and Y = 388,705.00; thence along the boundary of said State Lease No. 16798 the following courses: South 1,609.00 feet and East 4,332.00 feet to its Southeast corner, also being a point on the East line of said Block 70 having Coordinates of X = 2,635,350.00 and Y = 387,096.00; thence South 5,766.00 feet along the East line of said Block 70 to its Southeast corner having Coordinates of X = 2,635,350.00 and Y = 381,330.00; thence West 12,714.00 feet along the South line of said Block 70 to the Southeast corner of State Lease No. 17278 having Coordinates of X = 2,622,636.00 and Y = 381,330.00; thence along the boundary of said State Lease No. 17278 the following courses: North 500.00 feet and West 2,036.00 feet to its Northwest corner, also being a point on the West line of said Block 70 having Coordinates of X = 2,620,600.00 and Y = 381,830.00; thence North 6,875.00 feet along the West line of said Block 70 to the point of beginning, containing approximately **2,313.89 acres**, all as more particularly outlined on a plat on file in the Office of Mineral Resources, Department of Natural Resources. All bearings, distances and coordinates are based on Louisiana Coordinate System of 1927, (North or South Zone), where applicable.

NOTE: The above description of the Tract nominated for lease has been provided and corrected, where required, exclusively by the nomination party. Any mineral lease selected from this Tract and awarded by the Louisiana State Mineral Board shall be without warranty of any kind, either express, implied, or statutory, including, but not limited to, the implied warranties of merchantability and fitness for a particular purpose. Should the mineral lease awarded by the Louisiana State Mineral Board be subsequently modified, cancelled or abrogated due to the existence of conflicting leases, operating agreements, private claims or other future obligations or conditions which may affect all or any portion of the leased Tract, it shall not relieve the Lessee of the obligation to pay any bonus due thereon to the Louisiana State Mineral Board, nor shall the Louisiana State Mineral Board be obligated to refund any consideration paid by the Lessor prior to such modification, cancellation, or abrogation, including, but not limited to, bonuses, rentals and royalties.

NOTE: The State of Louisiana does hereby reserve, and this lease shall be subject to, the imprescriptible right of surface use in the nature of a

servitude in favor of the Department of Natural Resources, including its Offices and Commissions, for the sole purpose of implementing, constructing, servicing and maintaining approved coastal zone management and/or restoration projects. Utilization of any and all rights derived under this lease by the mineral lessee, its agents, successors or assigns, shall not interfere with nor hinder the reasonable surface use by the Department of Natural Resources, its Offices or Commissions, as herein above reserved.

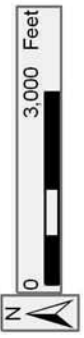
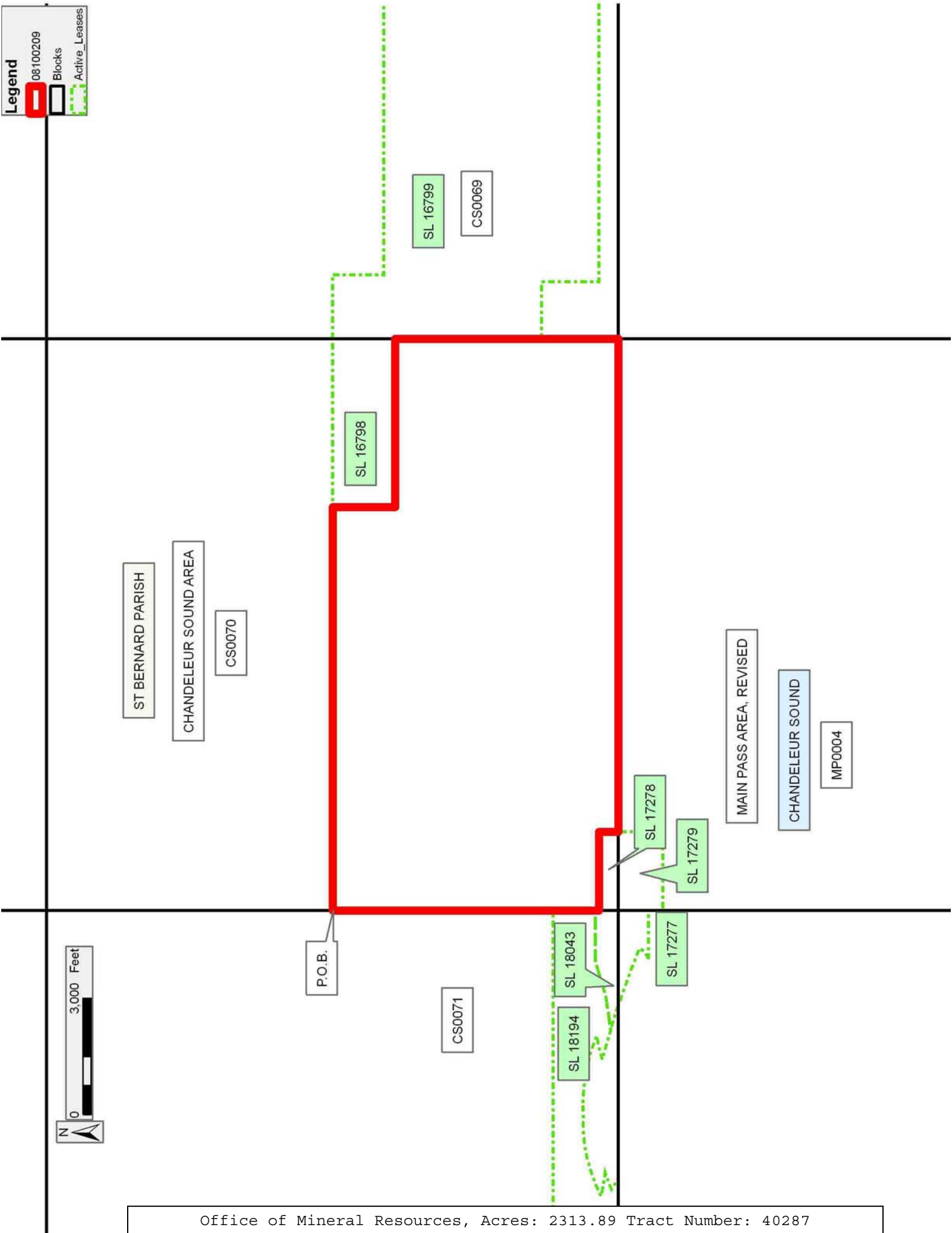
NOTE: The Department of Wildlife and Fisheries has designated certain areas in the coastal waters of the State of Louisiana as Oyster Seed Bed Areas. The exact location of those Seed Bed Areas must be obtained from the Department of Wildlife and Fisheries and any work done under a mineral lease from the State of Louisiana may necessarily be conducted in conformity with the rules and regulations promulgated by the said Department of Wildlife and Fisheries for Oyster Seed Bed Areas.

Applicant: MINERAL SERVICES, INC.

Bidder	Cash Payment	Price/Acre	Rental	Oil	Gas	Other

Legend

- 08100209
- Blocks
- Active_Leases



TRACT 40288 - Portion of Block 4, Main Pass Area, Revised, St. Bernard Parish, Louisiana

All of the lands now or formerly constituting the beds and bottoms of all water bodies of every nature and description as to which title is vested in the State of Louisiana, together with all islands arising therein and other lands formed by accretion or by reliction, where allowed by law, excepting tax adjudicated lands, and not presently under mineral lease on October 8, 2008, situated in St. Bernard Parish, Louisiana, and more particularly described as follows: Beginning at a point on the West line of Block 4, Main Pass Area, Revised, having Coordinates of X = 2,620,600.00 and Y = 373,955.00; thence North 6,227.00 feet along the West line of said Block 4 to the Southwest corner of State Lease No. 17279 having Coordinates of X = 2,620,600.00 and Y = 380,182.00; thence along the boundary of said State Lease No. 17279 the following courses: East 2,036.00 feet and North 1,148.00 feet to its Northeast corner, also being a point on the North line of said Block 4 having Coordinates of X = 2,622,636.00 and Y = 381,330.00; thence East 12,714.00 feet along the North line of said Block 4 to its Northeast corner having Coordinates of X = 2,635,350.00 and Y = 381,330.00; thence South 1,456.40 feet along the East line of said Block 4 to the Northeast corner of State Lease No. 16300, as amended, having Coordinates of X = 2,635,350.00 and Y = 379,873.60; thence West 2,504.41 feet along the North boundary of said State Lease No. 16300 to its Northwest corner, also being the Northeast corner of State Lease No. 16170, as amended, having Coordinates of X = 2,632,845.59 and Y = 379,873.60; thence along the boundary of said State Lease No. 16170 the following courses: West 2,492.62 feet and South 1,443.60 feet to its Southwest corner, also being the Northernmost Northwest corner of State Lease No. 16299, as amended, having Coordinates of X = 2,630,352.97 and Y = 378,430.00; thence along the boundary of said State Lease No. 16299 the following courses: South 756.40 feet; West 590.97 feet and South 760.00 feet to its Southwest corner, also being the Westernmost Northwest corner of State Lease No. 16732, as amended, having Coordinates of X = 2,629,762.00 and Y = 376,913.60; thence along the boundary of said State Lease No. 16732 the following courses: South 243.60 feet; East 4,638.00 feet and North 1,260.00 feet to its Northeast corner, also being a point on the Southern boundary of said State Lease No. 16300 having Coordinates of X = 2,634,400.00 and Y = 377,930.00; thence East 950.00 feet along the Southern boundary of said State Lease No. 16300 to its Southeast corner, also being a point on East line of said Block 4 having Coordinates of X = 2,635,350.00 and Y = 377,930.00; thence South 3,975.00 feet along the East line of said Block 4 to a point having Coordinates of X = 2,635,350.00 and Y = 373,955.00; thence West 14,750.00 feet to the point of beginning, containing approximately **2,089.98 acres**, all as more particularly outlined on a plat on file in the Office of Mineral Resources, Department of Natural Resources. All bearings, distances and coordinates are based on Louisiana Coordinate System of 1927, (North or South Zone), where applicable.

NOTE: The above description of the Tract nominated for lease has been provided and corrected, where required, exclusively by the nomination party. Any mineral lease selected from this Tract and awarded by the Louisiana State Mineral Board shall be without warranty of any kind, either express, implied, or statutory, including, but not limited to, the implied warranties of merchantability and fitness for a particular purpose. Should the mineral lease awarded by the Louisiana State Mineral Board be subsequently modified, cancelled or abrogated due to the existence of conflicting leases, operating agreements, private claims or other future obligations or conditions which may affect all or any portion of the leased Tract, it shall not relieve the Lessee of the obligation to pay any bonus due thereon to the Louisiana State Mineral Board, nor shall the Louisiana State Mineral Board be obligated to refund any consideration paid by the Lessor prior to such modification, cancellation, or abrogation, including, but not limited to, bonuses, rentals and royalties.

NOTE: The State of Louisiana does hereby reserve, and this lease shall be subject to, the imprescriptible right of surface use in the nature of a servitude in favor of the Department of Natural Resources, including its Offices and Commissions, for the sole purpose of implementing, constructing, servicing and maintaining approved coastal zone management and/or restoration projects. Utilization of any and all rights derived under this lease by the mineral lessee, its agents, successors or assigns, shall not interfere with nor hinder the reasonable surface use by the Department of Natural Resources, its Offices or Commissions, as herein above reserved.




NOTE: It appears, according to our records, that a portion of this Tract is located within the restrictive safety fairway area as set out by the Corps of Engineers, U.S. Army and/or the restrictive anchorage area as set out by the U.S. Coast Guard.

NOTE: The Department of Wildlife and Fisheries has designated certain areas in the coastal waters of the State of Louisiana as Oyster Seed Bed Areas. The exact location of those Seed Bed Areas must be obtained from the Department of Wildlife and Fisheries and any work done under a mineral lease from the State of Louisiana may necessarily be conducted in conformity with the rules and regulations promulgated by the said Department of Wildlife and Fisheries for Oyster Seed Bed Areas.

Applicant: MINERAL SERVICES, INC.

Bidder	Cash Payment	Price/Acre	Rental	Oil	Gas	Other

Legend

-  08100210
-  Blocks
-  Active_Leases



ST BERNARD PARISH

CHANDELEUR SOUND

CHANDELEUR SOUND AREA

CS0070

SL 17278

SL 17279

SL 16300

SL 16170

SL 16299

SL 16732

BS0001

MP0003

P.O.B.

MAIN PASS AREA, REVISED

MP0004

TRACT 40289 - St. Mary Parish, Louisiana

All of the lands now or formerly constituting the beds and bottoms of all water bodies of every nature and description as to which title is vested in the State of Louisiana, together with all islands arising therein and other lands formed by accretion or by reliction, where allowed by law, excepting tax adjudicated lands, and not presently under mineral lease on October 8, 2008, situated in St. Mary Parish, Louisiana, and more particularly described as follows: Beginning at the Southeast corner of State Lease No. 19363, also being the Northernmost Northeast corner of State Lease No. 19367 having Coordinates of X = 1,968,278.23 and Y = 340,112.64; thence East 8,045.97 feet to a point having Coordinates of X = 1,976,324.20 and Y = 340,112.64; thence South 5,029.54 feet to the Northwest corner of State Lease No. 3185, as amended, also being the Northeast corner of State Lease No. 3586 having Coordinates of X = 1,976,324.20 and Y = 335,083.10; thence North 89 degrees 57 minutes 56 seconds West approximately 1,243 feet along the North boundary of said State Lease No. 3586 to its Northwest corner; thence continue North 89 degrees 57 minutes 56 seconds West approximately 4,110 feet to a point on the East boundary of said State Lease No. 19367 having Coordinates of X = 1,970,970.56 and Y = 335,086.32; thence along the boundary of said State Lease No. 19367 the following courses: North 00 degrees 23 minutes 04 seconds East 2,447.93 feet to a corner having Coordinates of X = 1,970,986.99 and Y = 337,534.19; South 89 degrees 40 minutes 13 seconds West 2,722.41 feet to a corner having Coordinates of X = 1,968,264.63 and Y = 337,518.53 and North 00 degrees 18 minutes 01 seconds East 2,594.15 feet to the point of beginning, **LESS AND EXCEPT** that portion, if any, of State Lease No. 3586 which may lie within the above described tract, containing approximately 716 gross acres and **107.4 net acres**, all as more particularly outlined on a plat on file in the Office of Mineral Resources, Department of Natural Resources. All bearings, distances and coordinates are based on Louisiana Coordinate System of 1927, (North or South Zone), where applicable.

NOTE: The above description of the Tract nominated for lease has been provided and corrected, where required, exclusively by the nomination party. Any mineral lease selected from this Tract and awarded by the Louisiana State Mineral Board shall be without warranty of any kind, either express, implied, or statutory, including, but not limited to, the implied warranties of merchantability and fitness for a particular purpose. Should the mineral lease awarded by the Louisiana State Mineral Board be subsequently modified, cancelled or abrogated due to the existence of conflicting leases, operating agreements, private claims or other future obligations or conditions which may affect all or any portion of the leased Tract, it shall not relieve the Lessee of the obligation to pay any bonus due thereon to the Louisiana State Mineral Board, nor shall the Louisiana State Mineral Board be obligated to refund any consideration paid by the Lessor prior to such modification, cancellation, or abrogation, including, but not limited to, bonuses, rentals and royalties.

NOTE: The State of Louisiana does hereby reserve, and this lease shall be subject to, the imprescriptible right of surface use in the nature of a servitude in favor of the Department of Natural Resources, including its Offices and Commissions, for the sole purpose of implementing, constructing, servicing and maintaining approved coastal zone management and/or restoration projects. Utilization of any and all rights derived under this lease by the mineral lessee, its agents, successors or assigns, shall not interfere with nor hinder the reasonable surface use by the Department of Natural Resources, its Offices or Commissions, as herein above reserved.

Applicant: THEOPHILUS OIL, GAS & LAND SERVICES, LLC

Bidder	Cash Payment	Price/Acre	Rental	Oil	Gas	Other

Legend

- 08100069
- Active_Leases
- DOQQ2004

ST MARY PARISH

T17S - R10E

SL 3185

SL 3586

WAX LAKE

SL 19369

P.O.B.

SL 19363

SL 19367

