

TRACT 40270 - Portion of Block 15, Chandeleur Sound Area, St. Bernard Parish, Louisiana

All of the lands now or formerly constituting the beds and bottoms of all water bodies of every nature and description as to which title is vested in the State of Louisiana, together with all islands arising therein and other lands formed by accretion or by reliction, where allowed by law, excepting tax adjudicated lands, and not presently under mineral lease on October 8, 2008, situated in St. Bernard Parish, Louisiana, and more particularly described as follows: Beginning at a point on the North line of Block 15, Chandeleur Sound Area, having Coordinates of X = 2,731,225.00 and Y = 455,080.00; thence East 7,375.00 feet along the North line of said Block 15 to its Northeast corner having Coordinates of X = 2,738,600.00 and Y = 455,080.00; thence South 14,750.00 feet along the East line of said Block 15 to its Southeast corner having Coordinates of X = 2,738,600.00 and Y = 440,330.00; thence West 7,375.00 feet along the South line of said Block 15 to a point having Coordinates of X = 2,731,225.00 and Y = 440,330.00; thence North 14,750.00 feet to the point of beginning, containing approximately **2,497.27 acres**, all as more particularly outlined on a plat on file in the Office of Mineral Resources, Department of Natural Resources. All bearings, distances and coordinates are based on Louisiana Coordinate System of 1927, (North or South Zone), where applicable.

NOTE: The above description of the Tract nominated for lease has been provided and corrected, where required, exclusively by the nomination party. Any mineral lease selected from this Tract and awarded by the Louisiana State Mineral Board shall be without warranty of any kind, either express, implied, or statutory, including, but not limited to, the implied warranties of merchantability and fitness for a particular purpose. Should the mineral lease awarded by the Louisiana State Mineral Board be subsequently modified, cancelled or abrogated due to the existence of conflicting leases, operating agreements, private claims or other future obligations or conditions which may affect all or any portion of the leased Tract, it shall not relieve the Lessee of the obligation to pay any bonus due thereon to the Louisiana State Mineral Board, nor shall the Louisiana State Mineral Board be obligated to refund any consideration paid by the Lessor prior to such modification, cancellation, or abrogation, including, but not limited to, bonuses, rentals and royalties.

NOTE: The Office of Mineral Resources will require a minimum bonus of \$230 per acre and a minimum royalty of 23%.




NOTE: The State of Louisiana does hereby reserve, and this lease shall be subject to, the imprescriptible right of surface use in the nature of a servitude in favor of the Department of Natural Resources, including its Offices and Commissions, for the sole purpose of implementing, constructing, servicing and maintaining approved coastal zone management and/or restoration projects. Utilization of any and all rights derived under this lease by the mineral lessee, its agents, successors or assigns, shall not interfere with nor hinder the reasonable surface use by the

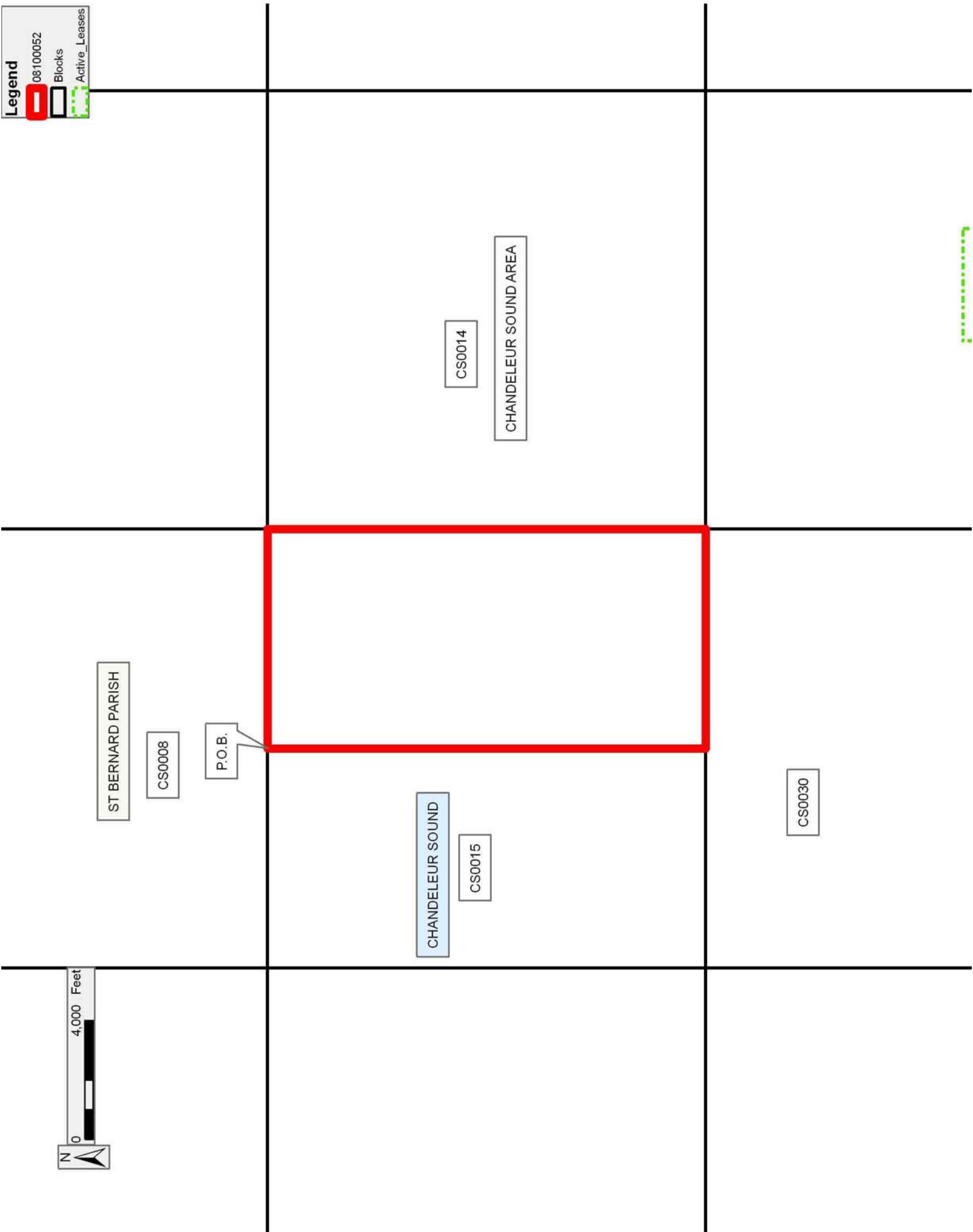
Department of Natural Resources, its Offices or Commissions, as herein above reserved.

Applicant: THEOPHILUS OIL, GAS & LAND SERVICES, LLC

Bidder	Cash Payment	Price/Acre	Rental	Oil	Gas	Other

Legend

-  08100052
-  Blocks
-  Active_Leases



TRACT 40271 - Portion of Block 14, Chandeleur Sound Area, St. Bernard Parish, Louisiana

All of the lands now or formerly constituting the beds and bottoms of all water bodies of every nature and description as to which title is vested in the State of Louisiana, together with all islands arising therein and other lands formed by accretion or by reliction, where allowed by law, excepting tax adjudicated lands, and not presently under mineral lease on October 8, 2008, situated in St. Bernard Parish, Louisiana, and more particularly described as follows: Beginning at Northwest corner of Block 14 Chandeleur Sound Area, having Coordinates of X = 2,738,600.00 and Y = 455,080.00; thence East 7,375.00 feet along the North line of said Block 14 to a point having Coordinates of X = 2,745,975.00 and Y = 455,080.00; thence South 14,750.00 feet to a point on the South line of said Block 14 having Coordinates of X = 2,745,975.00 and Y = 440,330.00; thence West 7,375.00 feet along the South line of said Block 14 to its Southwest corner having Coordinates of X = 2,738,600.00 and Y = 440,330.00; thence North 14,750.00 feet along the West line of said Block 14 to the point of beginning, containing approximately **2,497.27 acres**, all as more particularly outlined on a plat on file in the Office of Mineral Resources, Department of Natural Resources. All bearings, distances and coordinates are based on Louisiana Coordinate System of 1927, (North or South Zone), where applicable.

NOTE: The above description of the Tract nominated for lease has been provided and corrected, where required, exclusively by the nomination party. Any mineral lease selected from this Tract and awarded by the Louisiana State Mineral Board shall be without warranty of any kind, either express, implied, or statutory, including, but not limited to, the implied warranties of merchantability and fitness for a particular purpose. Should the mineral lease awarded by the Louisiana State Mineral Board be subsequently modified, cancelled or abrogated due to the existence of conflicting leases, operating agreements, private claims or other future obligations or conditions which may affect all or any portion of the leased Tract, it shall not relieve the Lessee of the obligation to pay any bonus due thereon to the Louisiana State Mineral Board, nor shall the Louisiana State Mineral Board be obligated to refund any consideration paid by the Lessor prior to such modification, cancellation, or abrogation, including, but not limited to, bonuses, rentals and royalties.

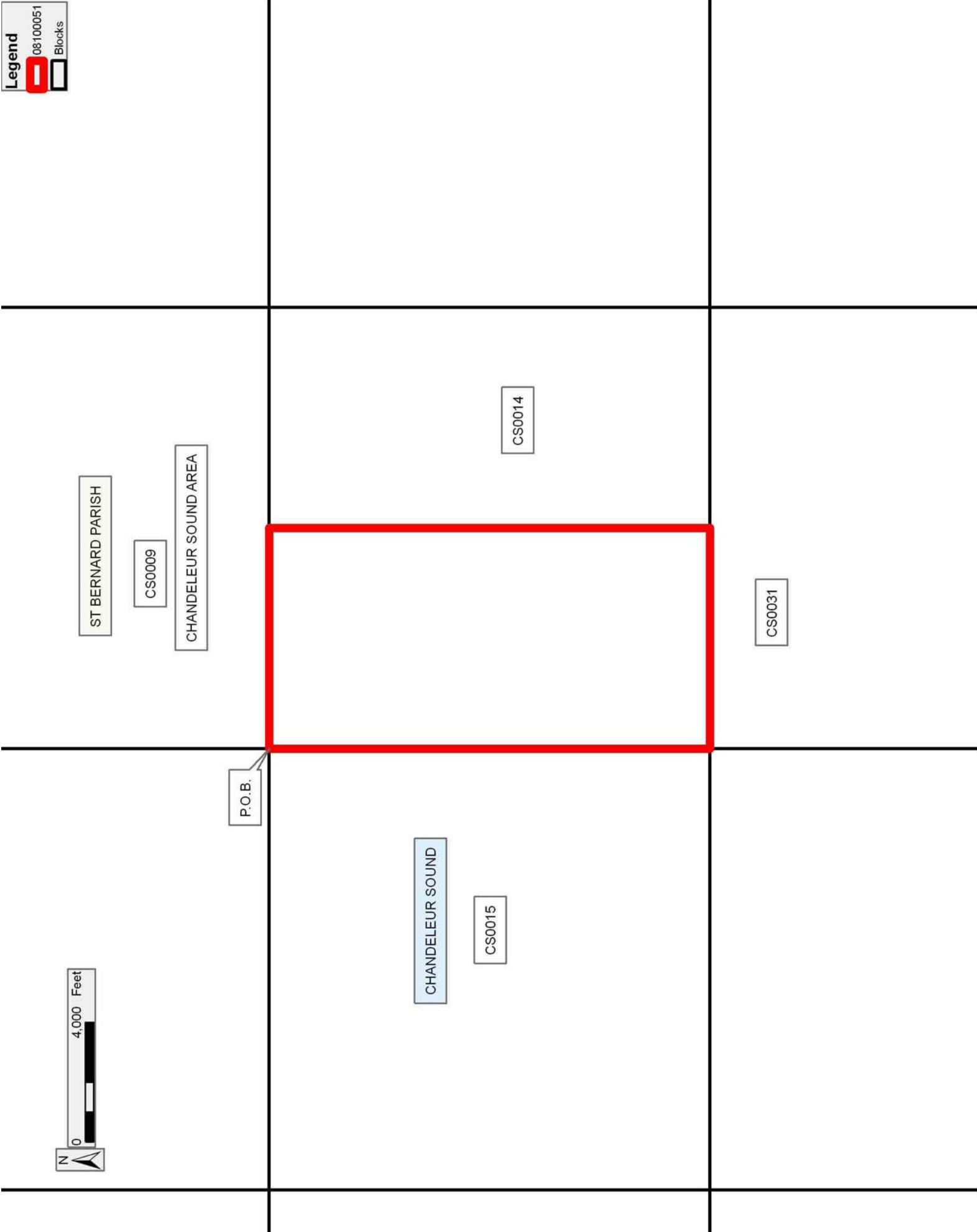
NOTE: The Office of Mineral Resources will require a minimum bonus of \$230 per acre and a minimum royalty of 23%.

NOTE: The State of Louisiana does hereby reserve, and this lease shall be subject to, the imprescriptible right of surface use in the nature of a servitude in favor of the Department of Natural Resources, including its Offices and Commissions, for the sole purpose of implementing, constructing, servicing and maintaining approved coastal zone management and/or restoration projects. Utilization of any and all rights derived under this lease by the mineral lessee, its agents, successors or assigns,

shall not interfere with nor hinder the reasonable surface use by the Department of Natural Resources, its Offices or Commissions, as herein above reserved.

Applicant: THEOPHILUS OIL, GAS & LAND SERVICES, LLC

Bidder	Cash Payment	Price/Acre	Rental	Oil	Gas	Other



TRACT 40272 - Portion of Block 32, Chandeleur Sound Area, St. Bernard Parish, Louisiana

All of the lands now or formerly constituting the beds and bottoms of all water bodies of every nature and description as to which title is vested in the State of Louisiana, together with all islands arising therein and other lands formed by accretion or by reliction, where allowed by law, excepting tax adjudicated lands, and not presently under mineral lease on October 8, 2008, situated in St. Bernard Parish, Louisiana, and more particularly described as follows: Beginning at Northwest corner of Block 32, Chandeleur Sound Area, having Coordinates of X = 2,753,350.00 and Y = 440,330.00; thence East 14,750.00 feet along the North line of said Block 32 to its Northeast corner having Coordinates of X = 2,768,100.00 and Y = 440,330.00; thence South 7,375.00 feet along the East line of said Block 32 to a point having Coordinates of X = 2,768,100.00 and Y = 432,955.00; thence West 14,750.00 feet to a point on the West line of said Block 32 having Coordinates of X = 2,753,350.00 and Y = 432,955.00; thence North 7,375.00 feet along the West line of said Block 32 to the point of beginning, containing approximately **2,497.27 acres**, all as more particularly outlined on a plat on file in the Office of Mineral Resources, Department of Natural Resources. All bearings, distances and coordinates are based on Louisiana Coordinate System of 1927, (North or South Zone), where applicable.

NOTE: The above description of the Tract nominated for lease has been provided and corrected, where required, exclusively by the nomination party. Any mineral lease selected from this Tract and awarded by the Louisiana State Mineral Board shall be without warranty of any kind, either express, implied, or statutory, including, but not limited to, the implied warranties of merchantability and fitness for a particular purpose. Should the mineral lease awarded by the Louisiana State Mineral Board be subsequently modified, cancelled or abrogated due to the existence of conflicting leases, operating agreements, private claims or other future obligations or conditions which may affect all or any portion of the leased Tract, it shall not relieve the Lessee of the obligation to pay any bonus due thereon to the Louisiana State Mineral Board, nor shall the Louisiana State Mineral Board be obligated to refund any consideration paid by the Lessor prior to such modification, cancellation, or abrogation, including, but not limited to, bonuses, rentals and royalties.

NOTE: The Office of Mineral Resources will require a minimum bonus of \$230 per acre and a minimum royalty of 23%.

NOTE: The State of Louisiana does hereby reserve, and this lease shall be subject to, the imprescriptible right of surface use in the nature of a servitude in favor of the Department of Natural Resources, including its Offices and Commissions, for the sole purpose of implementing, constructing, servicing and maintaining approved coastal zone management and/or restoration projects. Utilization of any and all rights derived under this lease by the mineral lessee, its agents, successors or assigns,

shall not interfere with nor hinder the reasonable surface use by the Department of Natural Resources, its Offices or Commissions, as herein above reserved.

Applicant: THEOPHILUS OIL, GAS & LAND SERVICES, LLC

Bidder	Cash Payment	Price/Acre	Rental	Oil	Gas	Other



ST BERNARD PARISH

CS0013

CHANDELEUR SOUND

P.O.B.

CS0031

CS0033

CHANDELEUR SOUND AREA

CS0032

TRACT 40273 - Portion of Block 31, Chandeleur Sound Area, St. Bernard Parish, Louisiana

All of the lands now or formerly constituting the beds and bottoms of all water bodies of every nature and description as to which title is vested in the State of Louisiana, together with all islands arising therein and other lands formed by accretion or by reliction, where allowed by law, excepting tax adjudicated lands, and not presently under mineral lease on October 8, 2008, situated in St. Bernard Parish, Louisiana, and more particularly described as follows: Beginning at Northwest corner of Block 31, Chandeleur Sound Area, having Coordinates of X = 2,738,600.00 and Y = 440,330.00; thence East 14,750.00 feet along the North line of said Block 31 to its Northeast corner having Coordinates of X = 2,753,350.00 and Y = 440,330.00; thence South 7,375.00 feet along the East line of said Block 31 to a point having Coordinates of X = 2,753,350.00 and Y = 432,955.00; thence West 14,750.00 feet to a point on the West line of said Block 31 having Coordinates of X = 2,738,600.00 and Y = 432,955.00; thence North 7,375.00 feet along the West line of said Block 31 to the point of beginning, containing approximately **2,497.27 acres**, all as more particularly outlined on a plat on file in the Office of Mineral Resources, Department of Natural Resources. All bearings, distances and coordinates are based on Louisiana Coordinate System of 1927, (North or South Zone), where applicable.

NOTE: The above description of the Tract nominated for lease has been provided and corrected, where required, exclusively by the nomination party. Any mineral lease selected from this Tract and awarded by the Louisiana State Mineral Board shall be without warranty of any kind, either express, implied, or statutory, including, but not limited to, the implied warranties of merchantability and fitness for a particular purpose. Should the mineral lease awarded by the Louisiana State Mineral Board be subsequently modified, cancelled or abrogated due to the existence of conflicting leases, operating agreements, private claims or other future obligations or conditions which may affect all or any portion of the leased Tract, it shall not relieve the Lessee of the obligation to pay any bonus due thereon to the Louisiana State Mineral Board, nor shall the Louisiana State Mineral Board be obligated to refund any consideration paid by the Lessor prior to such modification, cancellation, or abrogation, including, but not limited to, bonuses, rentals and royalties.

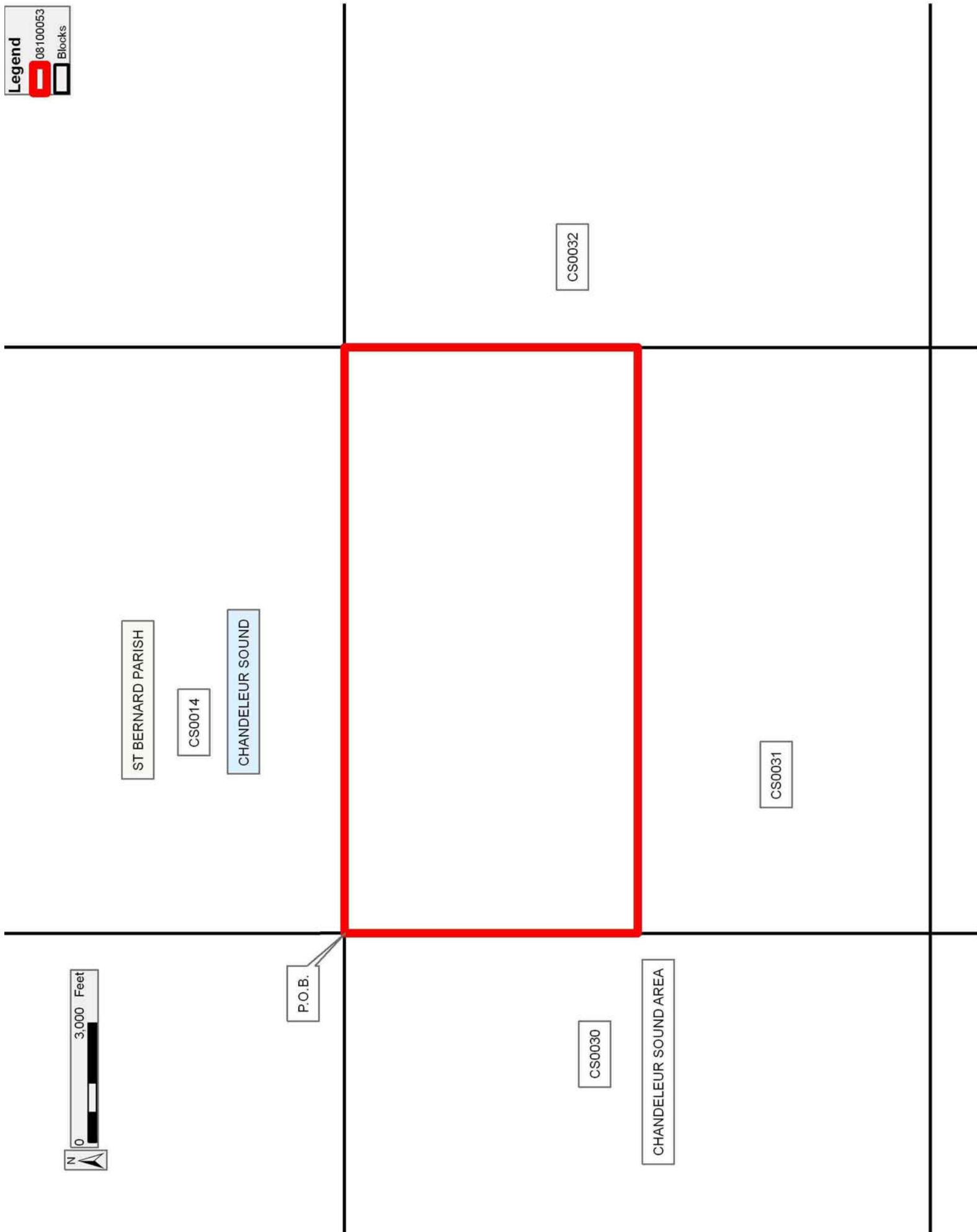
NOTE: The Office of Mineral Resources will require a minimum bonus of \$230 per acre and a minimum royalty of 23%.

NOTE: The State of Louisiana does hereby reserve, and this lease shall be subject to, the imprescriptible right of surface use in the nature of a servitude in favor of the Department of Natural Resources, including its Offices and Commissions, for the sole purpose of implementing, constructing, servicing and maintaining approved coastal zone management and/or restoration projects. Utilization of any and all rights derived under this lease by the mineral lessee, its agents, successors or assigns,

shall not interfere with nor hinder the reasonable surface use by the Department of Natural Resources, its Offices or Commissions, as herein above reserved.

Applicant: THEOPHILUS OIL, GAS & LAND SERVICES, LLC

Bidder	Cash Payment	Price/Acre	Rental	Oil	Gas	Other



TRACT 40274 - Cameron Parish, Louisiana

All of the lands now or formerly constituting the beds and bottoms of all water bodies of every nature and description as to which title is vested in the State of Louisiana, together with all islands arising therein and other lands formed by accretion or by reliction, where allowed by law, excepting tax adjudicated lands, and not presently under mineral lease on October 8, 2008, situated in Cameron Parish, Louisiana, and more particularly described as follows: Beginning at a point having Coordinates of X = 1,218,780.00 and Y = 450,200.00; thence South 5,940.00 feet to a point having Coordinates of X = 1,218,780.00 and Y = 444,260.00; thence West 5,205.00 feet to a point being on the East boundary of State Lease No. 19068 and having Coordinates of X = 1,213,575.00 and Y = 444,260.00; thence along the boundary of said State Lease No. 19068 the following courses: North 3,385.00 feet to a corner having Coordinates of X = 1,213,575.00 and Y = 447,645.00; West 4,508.00 feet to a corner having Coordinates of X = 1,209,067.00 and Y = 447,645.00; South 2,465.00 feet to a corner having Coordinates of X = 1,209,067.00 and Y = 445,180.00 and West 2,187.00 feet to a point on the East boundary of State Lease No. 19067 having Coordinates of X = 1,206,880.00 and Y = 445,180.00; thence along the boundary of said State Lease No. 19067 the following courses: North 1,745.00 feet to a corner having Coordinates of X = 1,206,880.00 and Y = 446,925.00; West 3,292.00 feet to a corner having Coordinates of X = 1,203,588.00 and Y = 446,925.00 and South 2,665.00 feet to a point having Coordinates of X = 1,203,588.00 and Y = 444,260.00; thence West 7,180.49 feet to a point on the Texas-Louisiana boundary having Coordinates of X = 1,196,407.51 and Y = 444,260.00; thence along said Texas-Louisiana boundary the following courses: North 46 degrees 43 minutes 34 seconds East 58.35 feet to a point having Coordinates of X = 1,196,450.00 and Y = 444,300.00; North 56 degrees 32 minutes 33 seconds East 6,148.90 feet to a point having Coordinates of X = 1,201,580.00 and Y = 447,690.00; North 65 degrees 25 minutes 23 seconds East 3,390.13 feet to a point having Coordinates of X = 1,204,663.00 and Y = 449,100.00 and North 35 degrees 51 minutes 28 seconds East 1,357.23 feet to a point having Coordinates of X = 1,205,458.03 and Y = 450,200.00; thence East 13,321.97 feet to the point of beginning, containing **1,814.11 acres, LESS AND EXCEPT** that portion thereof, if any, located West of the boundary line between the States of Texas and Louisiana as determined by the report of the Special Master and adjudicated by the Supreme Court of the United States in litigation styled **Texas v. Louisiana, et al No. 36 Original**, or as otherwise approved by said court, all as more particularly outlined on a plat on file in the Office of Mineral Resources, Department of Natural Resources. All bearings, distances and coordinates are based on Louisiana Coordinate System of 1927, (North or South Zone), where applicable.

NOTE: The above description of the Tract nominated for lease has been provided and corrected, where required, exclusively by the nomination party. Any mineral lease selected from this Tract and awarded by the Louisiana State Mineral Board shall be without warranty of any kind, either express, implied, or statutory, including, but not limited to, the

implied warranties of merchantability and fitness for a particular purpose. Should the mineral lease awarded by the Louisiana State Mineral Board be subsequently modified, cancelled or abrogated due to the existence of conflicting leases, operating agreements, private claims or other future obligations or conditions which may affect all or any portion of the leased Tract, it shall not relieve the Lessee of the obligation to pay any bonus due thereon to the Louisiana State Mineral Board, nor shall the Louisiana State Mineral Board be obligated to refund any consideration paid by the Lessor prior to such modification, cancellation, or abrogation, including, but not limited to, bonuses, rentals and royalties.

NOTE: The State of Louisiana does hereby reserve, and this lease shall be subject to, the imprescriptible right of surface use in the nature of a servitude in favor of the Department of Natural Resources, including its Offices and Commissions, for the sole purpose of implementing, constructing, servicing and maintaining approved coastal zone management and/or restoration projects. Utilization of any and all rights derived under this lease by the mineral lessee, its agents, successors or assigns, shall not interfere with nor hinder the reasonable surface use by the Department of Natural Resources, its Offices or Commissions, as herein above reserved.

Applicant: SUNCOAST LAND SERVICES, INC.

Bidder	Cash Payment	Price/Acre	Rental	Oil	Gas	Other

Legend
08100194
Active_Leases

CAMERON PARISH

SABINE LAKE

P.O.B.

SL 19068

SL 19067



TRACT 40275 - Assumption Parish, Louisiana

All of the lands now or formerly constituting the beds and bottoms of all water bodies of every nature and description as to which title is vested in the State of Louisiana, together with all islands arising therein and other lands formed by accretion or by reliction, where allowed by law, excepting tax adjudicated lands, and not presently under mineral lease on October 8, 2008, situated in Assumption Parish, Louisiana, and more particularly described as follows: Beginning at a point having Coordinates of X = 2,065,100.00 and Y = 434,400.00; thence East 5,700.00 feet to a point having Coordinates of X = 2,070,800.00 and Y = 434,400.00; thence South 11,500.00 feet to a point having Coordinates of X = 2,070,800.00 and Y = 422,900.00; thence West 3,844.00 feet to a point having Coordinates of X = 2,066,956.00 and Y = 422,900.00; thence North 33 degrees 34 minutes 10 seconds West 1,448.60 feet to a point having Coordinates of X = 2,066,155.00 and Y = 424,107.00; thence North 46 degrees 59 minutes 29 seconds West 854.70 feet to a point having Coordinates of X = 2,065,530.00 and Y = 424,690.00; thence North 45 degrees 20 minutes 06 seconds West 604.59 feet to a point having Coordinates of X = 2,065,100.00 and Y = 425,115.00; thence North 9,285.00 feet to the point of beginning, containing approximately **632 acres**, all as more particularly outlined on a plat on file in the Office of Mineral Resources, Department of Natural Resources. All bearings, distances and coordinates are based on Louisiana Coordinate System of 1927, (North or South Zone), where applicable.

NOTE: The above description of the Tract nominated for lease has been provided and corrected, where required, exclusively by the nomination party. Any mineral lease selected from this Tract and awarded by the Louisiana State Mineral Board shall be without warranty of any kind, either express, implied, or statutory, including, but not limited to, the implied warranties of merchantability and fitness for a particular purpose. Should the mineral lease awarded by the Louisiana State Mineral Board be subsequently modified, cancelled or abrogated due to the existence of conflicting leases, operating agreements, private claims or other future obligations or conditions which may affect all or any portion of the leased Tract, it shall not relieve the Lessee of the obligation to pay any bonus due thereon to the Louisiana State Mineral Board, nor shall the Louisiana State Mineral Board be obligated to refund any consideration paid by the Lessor prior to such modification, cancellation, or abrogation, including, but not limited to, bonuses, rentals and royalties.

NOTE: The State of Louisiana does hereby reserve, and this lease shall be subject to, the imprescriptible right of surface use in the nature of a servitude in favor of the Department of Natural Resources, including its Offices and Commissions, for the sole purpose of implementing, constructing, servicing and maintaining approved coastal zone management and/or restoration projects. Utilization of any and all rights derived under this lease by the mineral lessee, its agents, successors or assigns, shall not interfere with nor hinder the reasonable surface use by the

Department of Natural Resources, its Offices or Commissions, as herein above reserved.

Applicant: P & P ENERGY

Bidder	Cash Payment	Price/Acre	Rental	Oil	Gas	Other

Legend
08100029
Active_Leases
DOQQ2004



TRACT 40276 - Assumption Parish, Louisiana

All of the lands now or formerly constituting the beds and bottoms of all water bodies of every nature and description as to which title is vested in the State of Louisiana, together with all islands arising therein and other lands formed by accretion or by reliction, where allowed by law, excepting tax adjudicated lands, and not presently under mineral lease on October 8, 2008, situated in Assumption Parish, Louisiana, and more particularly described as follows: Beginning at a point having Coordinates of X = 2,076,093.00 and Y = 432,193.00; thence South 11,593.00 feet to a point having Coordinates of X = 2,076,093.00 and Y = 420,600.00; thence West 4,677.25 feet to a point having Coordinates of X = 2,071,415.75 and Y = 420,600.00; thence North 06 degrees 20 minutes 29 seconds West 599.33 feet to a point having Coordinates of X = 2,071,349.55 and Y = 421,195.66; thence North 29 degrees 04 minutes 23 seconds West 510.90 feet to a point having Coordinates of X = 2,071,101.29 and Y = 421,642.19; thence North 47 degrees 44 minutes 09 seconds West 407.12 feet to a point having Coordinates of X = 2,070,800.00 and Y = 421,916.00; thence North 10,277.00 feet to a point having Coordinates of X = 2,070,800.00 and Y = 432,193.00; thence East 5,293.00 feet to the point of beginning, containing approximately **1,093 acres**, all as more particularly outlined on a plat on file in the Office of Mineral Resources, Department of Natural Resources. All bearings, distances and coordinates are based on Louisiana Coordinate System of 1927, (North or South Zone), where applicable.

NOTE: The above description of the Tract nominated for lease has been provided and corrected, where required, exclusively by the nomination party. Any mineral lease selected from this Tract and awarded by the Louisiana State Mineral Board shall be without warranty of any kind, either express, implied, or statutory, including, but not limited to, the implied warranties of merchantability and fitness for a particular purpose. Should the mineral lease awarded by the Louisiana State Mineral Board be subsequently modified, cancelled or abrogated due to the existence of conflicting leases, operating agreements, private claims or other future obligations or conditions which may affect all or any portion of the leased Tract, it shall not relieve the Lessee of the obligation to pay any bonus due thereon to the Louisiana State Mineral Board, nor shall the Louisiana State Mineral Board be obligated to refund any consideration paid by the Lessor prior to such modification, cancellation, or abrogation, including, but not limited to, bonuses, rentals and royalties.

NOTE: The State of Louisiana does hereby reserve, and this lease shall be subject to, the imprescriptible right of surface use in the nature of a servitude in favor of the Department of Natural Resources, including its Offices and Commissions, for the sole purpose of implementing, constructing, servicing and maintaining approved coastal zone management and/or restoration projects. Utilization of any and all rights derived under this lease by the mineral lessee, its agents, successors or assigns, shall not interfere with nor hinder the reasonable surface use by the

Department of Natural Resources, its Offices or Commissions, as herein above reserved.

Applicant: P & P ENERGY

Bidder	Cash Payment	Price/Acre	Rental	Oil	Gas	Other

ASSUMPTION PARISH

T14S - R13E

P.O.B.



FOURMILE BAYOU

LAKE VERRET



TRACT 40277 - Assumption Parish, Louisiana

All of the lands now or formerly constituting the beds and bottoms of all water bodies of every nature and description as to which title is vested in the State of Louisiana, together with all islands arising therein and other lands formed by accretion or by reliction, where allowed by law, excepting tax adjudicated lands, and not presently under mineral lease on October 8, 2008, situated in Assumption Parish, Louisiana, and more particularly described as follows: Beginning at a point having Coordinates of X = 2,076,093.00 and Y = 432,193.00; thence East 5,200.00 feet to a point having Coordinates of X = 2,081,293.00 and Y = 432,193.00; thence South 11,593.00 feet to a point having Coordinates of X = 2,081,293.00 and Y = 420,600.00; thence West 5,200.00 feet to a point having Coordinates of X = 2,076,093.00 and Y = 420,600.00; thence North 11,593.00 feet to the point of beginning, containing approximately **617 acres**, all as more particularly outlined on a plat on file in the Office of Mineral Resources, Department of Natural Resources. All bearings, distances and coordinates are based on Louisiana Coordinate System of 1927, (North or South Zone), where applicable.

NOTE: The above description of the Tract nominated for lease has been provided and corrected, where required, exclusively by the nomination party. Any mineral lease selected from this Tract and awarded by the Louisiana State Mineral Board shall be without warranty of any kind, either express, implied, or statutory, including, but not limited to, the implied warranties of merchantability and fitness for a particular purpose. Should the mineral lease awarded by the Louisiana State Mineral Board be subsequently modified, cancelled or abrogated due to the existence of conflicting leases, operating agreements, private claims or other future obligations or conditions which may affect all or any portion of the leased Tract, it shall not relieve the Lessee of the obligation to pay any bonus due thereon to the Louisiana State Mineral Board, nor shall the Louisiana State Mineral Board be obligated to refund any consideration paid by the Lessor prior to such modification, cancellation, or abrogation, including, but not limited to, bonuses, rentals and royalties.

NOTE: The State of Louisiana does hereby reserve, and this lease shall be subject to, the imprescriptible right of surface use in the nature of a servitude in favor of the Department of Natural Resources, including its Offices and Commissions, for the sole purpose of implementing, constructing, servicing and maintaining approved coastal zone management and/or restoration projects. Utilization of any and all rights derived under this lease by the mineral lessee, its agents, successors or assigns, shall not interfere with nor hinder the reasonable surface use by the Department of Natural Resources, its Offices or Commissions, as herein above reserved.

Applicant: P & P ENERGY

Bidder	Cash Payment	Price/Acre	Rental	Oil	Gas	Other

ASSUMPTION PARISH

T14S - R14E

BAYOU LOUIS



P.O.B.

T14S - R13E

LAKE VERRET



TRACT 40278 - Cameron Parish, Louisiana

All of the lands now or formerly constituting the beds and bottoms of all water bodies of every nature and description as to which title is vested in the State of Louisiana, together with all islands arising therein and other lands formed by accretion or by reliction, where allowed by law, excepting tax adjudicated lands, and not presently under mineral lease on October 8, 2008, situated in Cameron Parish, Louisiana, and more particularly described as follows: Beginning at a point having Coordinates of X = 1,218,780.00 and Y = 444,260.00; thence South 4,674.00 feet to a point having Coordinates of X = 1,218,780.00 and Y = 439,586.00; thence West 11,900.00 feet to the Southeast corner of State Lease No. 19067 having Coordinates of X = 1,206,880.00 and Y = 439,586.00; thence North 3,354.00 feet along the East boundary of said State Lease No. 19067 to the Southwest corner of State Lease No. 19068 having Coordinates of X = 1,206,880.00 and Y = 442,940.00; thence along the boundary of said State Lease No. 19068 the following courses: East 6,695.00 feet to its Southeast corner having Coordinates of X = 1,213,575.00 and Y = 442,940.00 and North 1,320.00 feet to a point having Coordinates of X = 1,213,575.00 and Y = 444,260.00; thence East 5,205.00 feet to the point of beginning, containing approximately **1,073.99 acres**, all as more particularly outlined on a plat on file in the Office of Mineral Resources, Department of Natural Resources. All bearings, distances and coordinates are based on Louisiana Coordinate System of 1927, (North or South Zone), where applicable.

NOTE: The above description of the Tract nominated for lease has been provided and corrected, where required, exclusively by the nomination party. Any mineral lease selected from this Tract and awarded by the Louisiana State Mineral Board shall be without warranty of any kind, either express, implied, or statutory, including, but not limited to, the implied warranties of merchantability and fitness for a particular purpose. Should the mineral lease awarded by the Louisiana State Mineral Board be subsequently modified, cancelled or abrogated due to the existence of conflicting leases, operating agreements, private claims or other future obligations or conditions which may affect all or any portion of the leased Tract, it shall not relieve the Lessee of the obligation to pay any bonus due thereon to the Louisiana State Mineral Board, nor shall the Louisiana State Mineral Board be obligated to refund any consideration paid by the Lessor prior to such modification, cancellation, or abrogation, including, but not limited to, bonuses, rentals and royalties.

NOTE: The State of Louisiana does hereby reserve, and this lease shall be subject to, the imprescriptible right of surface use in the nature of a servitude in favor of the Department of Natural Resources, including its Offices and Commissions, for the sole purpose of implementing, constructing, servicing and maintaining approved coastal zone management and/or restoration projects. Utilization of any and all rights derived under this lease by the mineral lessee, its agents, successors or assigns, shall not interfere with nor hinder the reasonable surface use by the

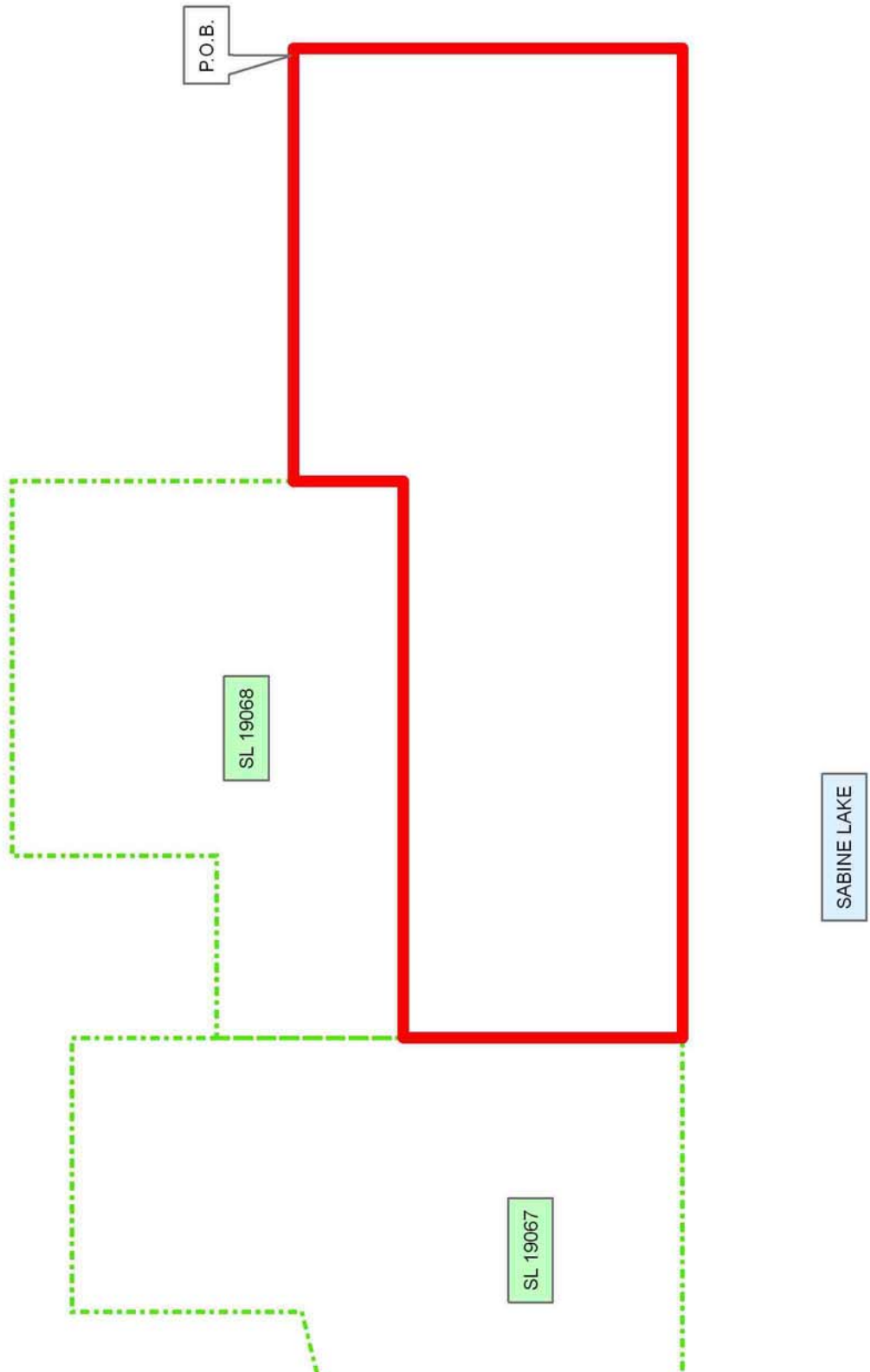
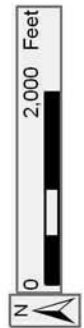
Department of Natural Resources, its Offices or Commissions, as herein above reserved.

Applicant: SUNCOAST LAND SERVICES, INC.

Bidder	Cash Payment	Price/Acre	Rental	Oil	Gas	Other

Legend
08100192
Active_Leases

CAMERON PARISH



TRACT 40279 - Cameron Parish, Louisiana

All of the lands now or formerly constituting the beds and bottoms of all water bodies of every nature and description as to which title is vested in the State of Louisiana, together with all islands arising therein and other lands formed by accretion or by reliction, where allowed by law, excepting tax adjudicated lands, and not presently under mineral lease on October 8, 2008, situated in Cameron Parish, Louisiana, and more particularly described as follows: Beginning at a point being on the Western boundary of State Lease No. 19067 having Coordinates of X = 1,203,588.00 and Y = 444,260.00; thence along the boundary of said State Lease No. 19067 the following courses: South 99.00 feet to a point having Coordinates of X = 1,203,588.00 and Y = 444,161.00; South 76 degrees 05 minutes 08 seconds West 6,499.73 feet to a point having Coordinates of X = 1,197,279.00 and Y = 442,598.00 and South 1,628.00 feet to a point on the North boundary State Lease No. 19095 having Coordinates of X = 1,197,279.00 and Y = 440,970.00; thence along the boundary of said State Lease No. 19095 the following courses: West 2,719.00 feet to its Northwest corner having Coordinates of X = 1,194,560.00 and Y = 440,970.00 and South 1,384.00 feet to a point having Coordinates of X = 1,194,560.00 and Y = 439,586.00; thence West 4,968.94 feet to a point on the Texas-Louisiana boundary having Coordinates of X = 1,189,591.07 and Y = 439,586.00; thence along said Texas-Louisiana boundary the following courses: North 52 degrees 24 minutes 41 seconds East 465.58 feet to a point having Coordinates of X = 1,189,960.00 and Y = 439,870.00; North 62 degrees 17 minutes 00 seconds East 2,225.34 feet to a point having Coordinates of X = 1,191,930.00 and Y = 440,905.00; North 58 degrees 23 minutes 11 seconds East 3,100.04 feet to a point having Coordinates of X = 1,194,570.00 and Y = 442,530.00; North 46 degrees 43 minutes 34 seconds East 2,523.76 feet to a point having Coordinates of X = 1,196,407.51 and Y = 444,260.00; thence East 7,180.49 feet to the point of beginning, containing **461.96 acres**, all as more particularly outlined on a plat on file in the Office of Mineral Resources, Department of Natural Resources. All bearings, distances and coordinates are based on Louisiana Coordinate System of 1927, (North or South Zone), where applicable.

NOTE: The above description of the Tract nominated for lease has been provided and corrected, where required, exclusively by the nomination party. Any mineral lease selected from this Tract and awarded by the Louisiana State Mineral Board shall be without warranty of any kind, either express, implied, or statutory, including, but not limited to, the implied warranties of merchantability and fitness for a particular purpose. Should the mineral lease awarded by the Louisiana State Mineral Board be subsequently modified, cancelled or abrogated due to the existence of conflicting leases, operating agreements, private claims or other future obligations or conditions which may affect all or any portion of the leased Tract, it shall not relieve the Lessee of the obligation to pay any bonus due thereon to the Louisiana State Mineral Board, nor shall the Louisiana State Mineral Board be obligated to refund any consideration

paid by the Lessor prior to such modification, cancellation, or abrogation, including, but not limited to, bonuses, rentals and royalties.

NOTE: The State of Louisiana does hereby reserve, and this lease shall be subject to, the imprescriptible right of surface use in the nature of a servitude in favor of the Department of Natural Resources, including its Offices and Commissions, for the sole purpose of implementing, constructing, servicing and maintaining approved coastal zone management and/or restoration projects. Utilization of any and all rights derived under this lease by the mineral lessee, its agents, successors or assigns, shall not interfere with nor hinder the reasonable surface use by the Department of Natural Resources, its Offices or Commissions, as herein above reserved.

Applicant: SUNCOAST LAND SERVICES, INC.

Bidder	Cash Payment	Price/Acre	Rental	Oil	Gas	Other

Legend
08100190
Active_Leases



CAMERON PARISH

P.O.B.

SL 19067

SL 19095

SABINE LAKE

