

**TRACT 40250 - Portion of Blocks 11, and 67, Chandeleur Sound Addition Area, Revised, St. Bernard Parish, Louisiana**

All of the lands now or formerly constituting the beds and bottoms of all water bodies of every nature and description as to which title is vested in the State of Louisiana, together with all islands arising therein and other lands formed by accretion or by reliction, where allowed by law, excepting tax adjudicated lands, and not presently under mineral lease on October 8, 2008, situated in St. Bernard Parish, Louisiana, and more particularly described as follows: Beginning at a point located on the West line of Block 67, Chandeleur Sound Area Addition, Revised having Coordinates of X = 2,709,100.00 and Y = 550,955.00; thence East 6,806.78 feet to a point having Coordinates of X = 2,715,906.78 and Y = 550,955.00; thence Southeasterly on a straight line to a point having Coordinates of X = 2,716,475.00 and Y = 550,884.20; thence South 14,679.20 feet to a point lying within Block 11, Chandeleur Sound Area Addition, Revised, having Coordinates of X = 2,716,475.00 and Y = 536,205.00; thence West 7,375.00 feet to a point on the West line of said Block 11 having Coordinates of X = 2,709,100.00 and Y = 536,205.00; thence North 7,375.00 feet along the West line of said Block 11 to its Northwest corner, also being the Southwest corner of said Block 67 having Coordinates of X = 2,709,100.00 and Y = 543,580.00; thence North 7,375.00 feet along the West line of said Block 67 to the point of beginning, containing approximately **2,496.81 acres**, all as more particularly outlined on a plat on file in the Office of Mineral Resources, Department of Natural Resources. All bearings, distances and coordinates are based on Louisiana Coordinate System of 1927, (North or South Zone), where applicable.

NOTE: The above description of the Tract nominated for lease has been provided and corrected, where required, exclusively by the nomination party. Any mineral lease selected from this Tract and awarded by the Louisiana State Mineral Board shall be without warranty of any kind, either express, implied, or statutory, including, but not limited to, the implied warranties of merchantability and fitness for a particular purpose. Should the mineral lease awarded by the Louisiana State Mineral Board be subsequently modified, cancelled or abrogated due to the existence of conflicting leases, operating agreements, private claims or other future obligations or conditions which may affect all or any portion of the leased Tract, it shall not relieve the Lessee of the obligation to pay any bonus due thereon to the Louisiana State Mineral Board, nor shall the Louisiana State Mineral Board be obligated to refund any consideration paid by the Lessor prior to such modification, cancellation, or abrogation, including, but not limited to, bonuses, rentals and royalties.

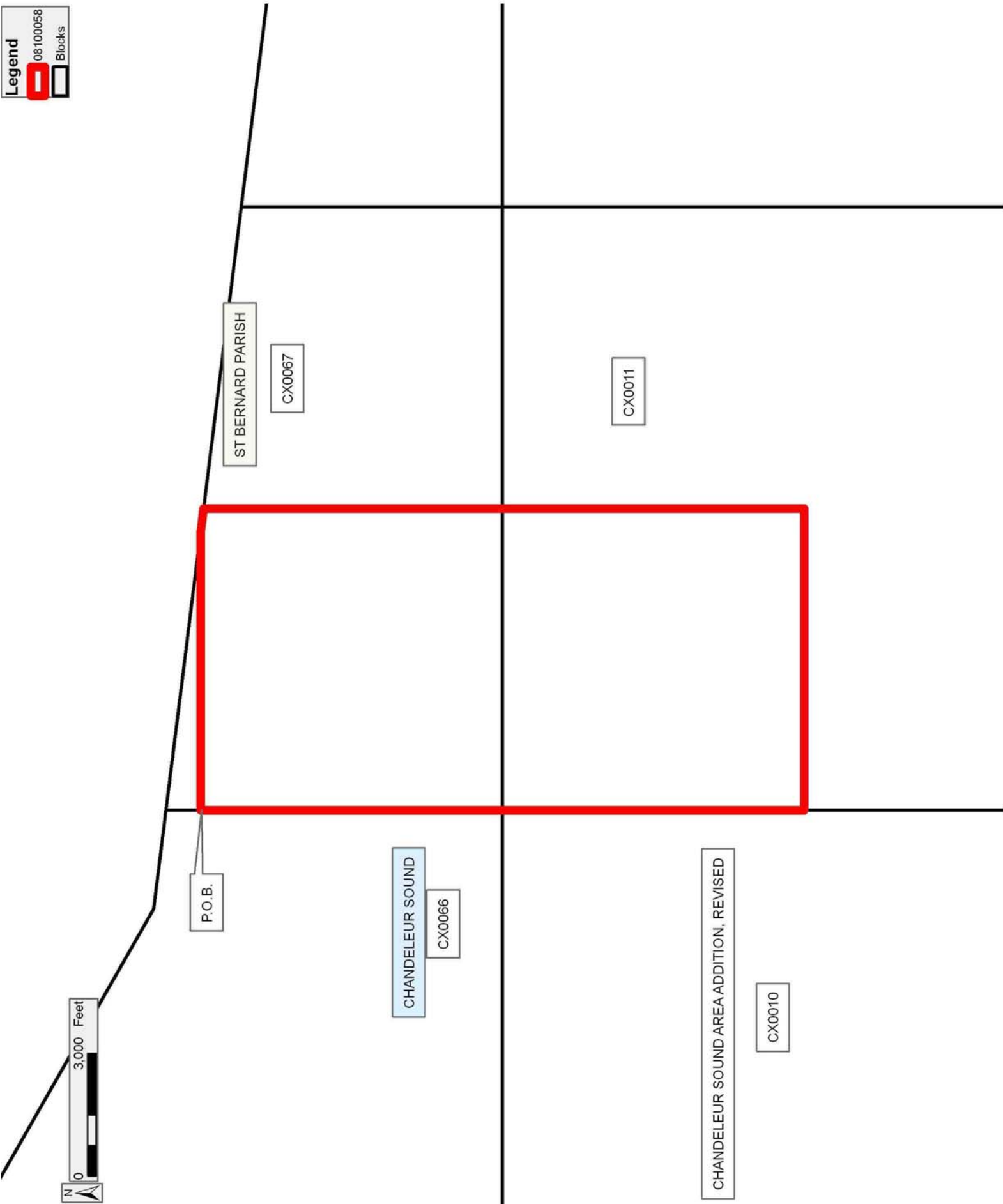
NOTE: The Office of Mineral Resources will require a minimum bonus of \$130 per acre and a minimum royalty of 21%.

NOTE: The State of Louisiana does hereby reserve, and this lease shall be subject to, the imprescriptible right of surface use in the nature of a servitude in favor of the Department of Natural Resources, including its Offices and Commissions, for the sole purpose of implementing,

constructing, servicing and maintaining approved coastal zone management and/or restoration projects. Utilization of any and all rights derived under this lease by the mineral lessee, its agents, successors or assigns, shall not interfere with nor hinder the reasonable surface use by the Department of Natural Resources, its Offices or Commissions, as herein above reserved.

Applicant: THEOPHILUS OIL, GAS & LAND SERVICES, LLC

Bidder	Cash Payment	Price/ Acre	Rental	Oil	Gas	Other



**TRACT 40251 - Portion of Block 66, Chandeleur Sound Addition Area, Revised, St. Bernard Parish, Louisiana**

All of the lands now or formerly constituting the beds and bottoms of all water bodies of every nature and description as to which title is vested in the State of Louisiana, together with all islands arising therein and other lands formed by accretion or by reliction, where allowed by law, excepting tax adjudicated lands, and not presently under mineral lease on October 8, 2008, situated in St. Bernard Parish, Louisiana, and more particularly described as follows: Beginning at a point on the West line of Block 66, Chandeleur Sound Area, Addition, Revised having Coordinates of X = 2,694,350.00 and Y = 550,955.00; thence East 14,750.00 feet to a point on the East line of said Block 66 having Coordinates of X = 2,709,100.00 and Y = 550,955.00; thence South 7,375.00 feet along the East line of said Block 66 to its Southeast corner having Coordinates of X = 2,709,100.00 and Y = 543,580.00; thence West 14,750.00 feet along the South line of said Block 66 to its Southwest corner having Coordinates of X = 2,694,350.00 and Y = 543,580.00: thence North 7,375.00 feet along the West line of said Block 66 to the point of beginning, containing approximately **2,497.27 acres**, all as more particularly outlined on a plat on file in the Office of Mineral Resources, Department of Natural Resources. All bearings, distances and coordinates are based on Louisiana Coordinate System of 1927, (North or South Zone), where applicable.

NOTE: The above description of the Tract nominated for lease has been provided and corrected, where required, exclusively by the nomination party. Any mineral lease selected from this Tract and awarded by the Louisiana State Mineral Board shall be without warranty of any kind, either express, implied, or statutory, including, but not limited to, the implied warranties of merchantability and fitness for a particular purpose. Should the mineral lease awarded by the Louisiana State Mineral Board be subsequently modified, cancelled or abrogated due to the existence of conflicting leases, operating agreements, private claims or other future obligations or conditions which may affect all or any portion of the leased Tract, it shall not relieve the Lessee of the obligation to pay any bonus due thereon to the Louisiana State Mineral Board, nor shall the Louisiana State Mineral Board be obligated to refund any consideration paid by the Lessor prior to such modification, cancellation, or abrogation, including, but not limited to, bonuses, rentals and royalties.

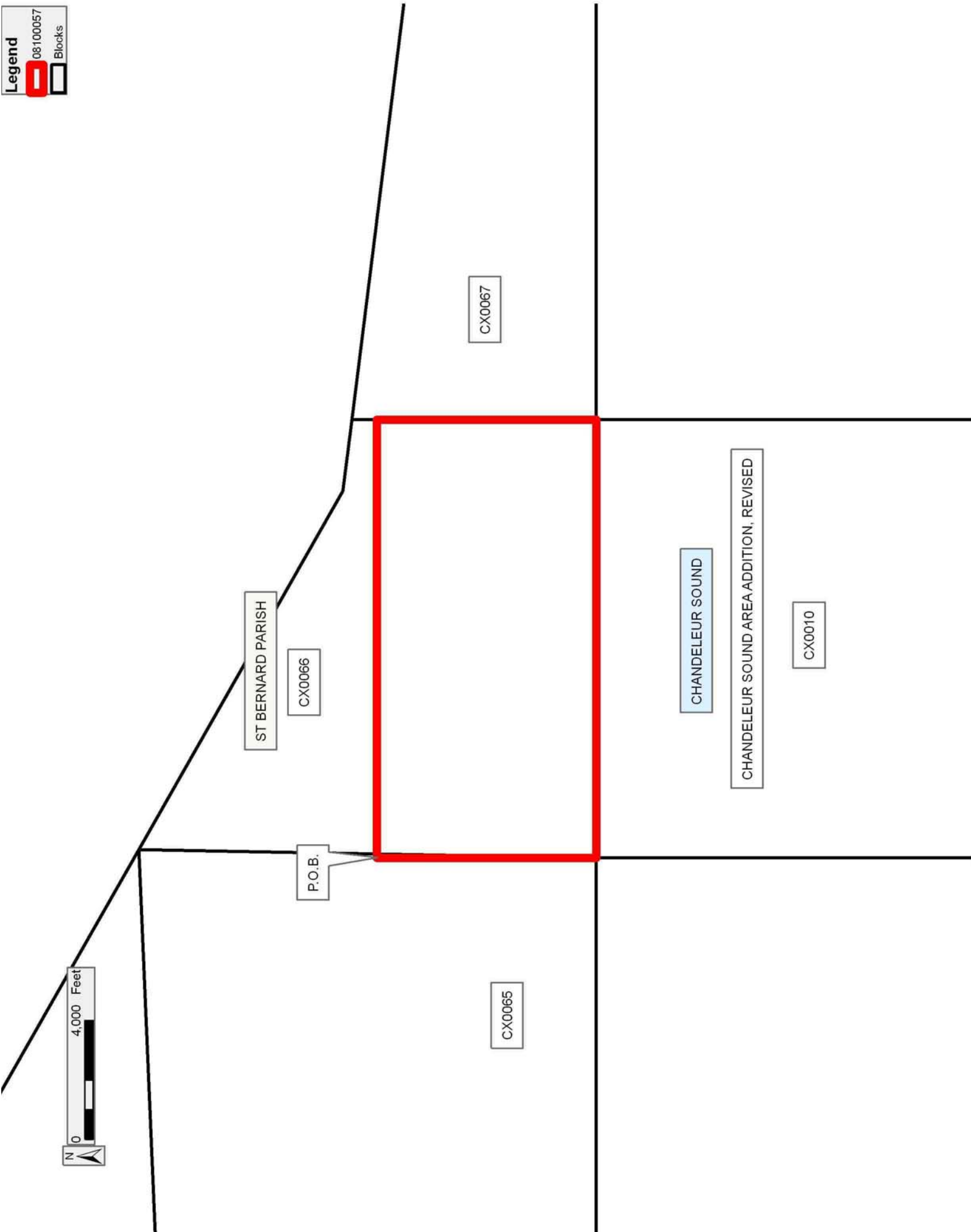
NOTE: The Office of Mineral Resources will require a minimum bonus of \$130 per acre and a minimum royalty of 21%.

NOTE: The State of Louisiana does hereby reserve, and this lease shall be subject to, the imprescriptible right of surface use in the nature of a servitude in favor of the Department of Natural Resources, including its Offices and Commissions, for the sole purpose of implementing, constructing, servicing and maintaining approved coastal zone management and/or restoration projects. Utilization of any and all rights derived under this lease by the mineral lessee, its agents, successors or assigns,

shall not interfere with nor hinder the reasonable surface use by the Department of Natural Resources, its Offices or Commissions, as herein above reserved.

Applicant: THEOPHILUS OIL, GAS & LAND SERVICES, LLC

Bidder	Cash Payment	Price/ Acre	Rental	Oil	Gas	Other



**TRACT 40252 - Portion of Block 65, Chandeleur Sound Addition Area, Revised, St. Bernard Parish, Louisiana**

All of the lands now or formerly constituting the beds and bottoms of all water bodies of every nature and description as to which title is vested in the State of Louisiana, together with all islands arising therein and other lands formed by accretion or by reliction, where allowed by law, excepting tax adjudicated lands, and not presently under mineral lease on October 8, 2008, situated in St. Bernard Parish, Louisiana, and more particularly described as follows: Beginning at a point on the West line of Block 65, Chandeleur Sound Area, Addition, Revised having Coordinates of X = 2,679,600.00 and Y = 550,955.00; thence East 14,750.00 feet to a point on the East line of said Block 65 having Coordinates of X = 2,694,350.00 and Y = 550,955.00; thence South 7,375.00 feet along the East line of said Block 65 to its Southeast corner having Coordinates of X = 2,694,350.00 and Y = 543,580.00; thence West 14,750.00 feet along the South line of said Block 65 to its Southwest corner having Coordinates of X = 2,679,600.00 and Y = 543,580.00: thence North 7,375.00 feet along the West line of said Block 65 to the point of beginning, containing approximately **2,497.27 acres**, all as more particularly outlined on a plat on file in the Office of Mineral Resources, Department of Natural Resources. All bearings, distances and coordinates are based on Louisiana Coordinate System of 1927, (North or South Zone), where applicable.

NOTE: The above description of the Tract nominated for lease has been provided and corrected, where required, exclusively by the nomination party. Any mineral lease selected from this Tract and awarded by the Louisiana State Mineral Board shall be without warranty of any kind, either express, implied, or statutory, including, but not limited to, the implied warranties of merchantability and fitness for a particular purpose. Should the mineral lease awarded by the Louisiana State Mineral Board be subsequently modified, cancelled or abrogated due to the existence of conflicting leases, operating agreements, private claims or other future obligations or conditions which may affect all or any portion of the leased Tract, it shall not relieve the Lessee of the obligation to pay any bonus due thereon to the Louisiana State Mineral Board, nor shall the Louisiana State Mineral Board be obligated to refund any consideration paid by the Lessor prior to such modification, cancellation, or abrogation, including, but not limited to, bonuses, rentals and royalties.

NOTE: The Office of Mineral Resources will require a minimum bonus of \$130 per acre and a minimum royalty of 21%.

NOTE: The State of Louisiana does hereby reserve, and this lease shall be subject to, the imprescriptible right of surface use in the nature of a servitude in favor of the Department of Natural Resources, including its Offices and Commissions, for the sole purpose of implementing, constructing, servicing and maintaining approved coastal zone management and/or restoration projects. Utilization of any and all rights derived under this lease by the mineral lessee, its agents, successors or assigns,

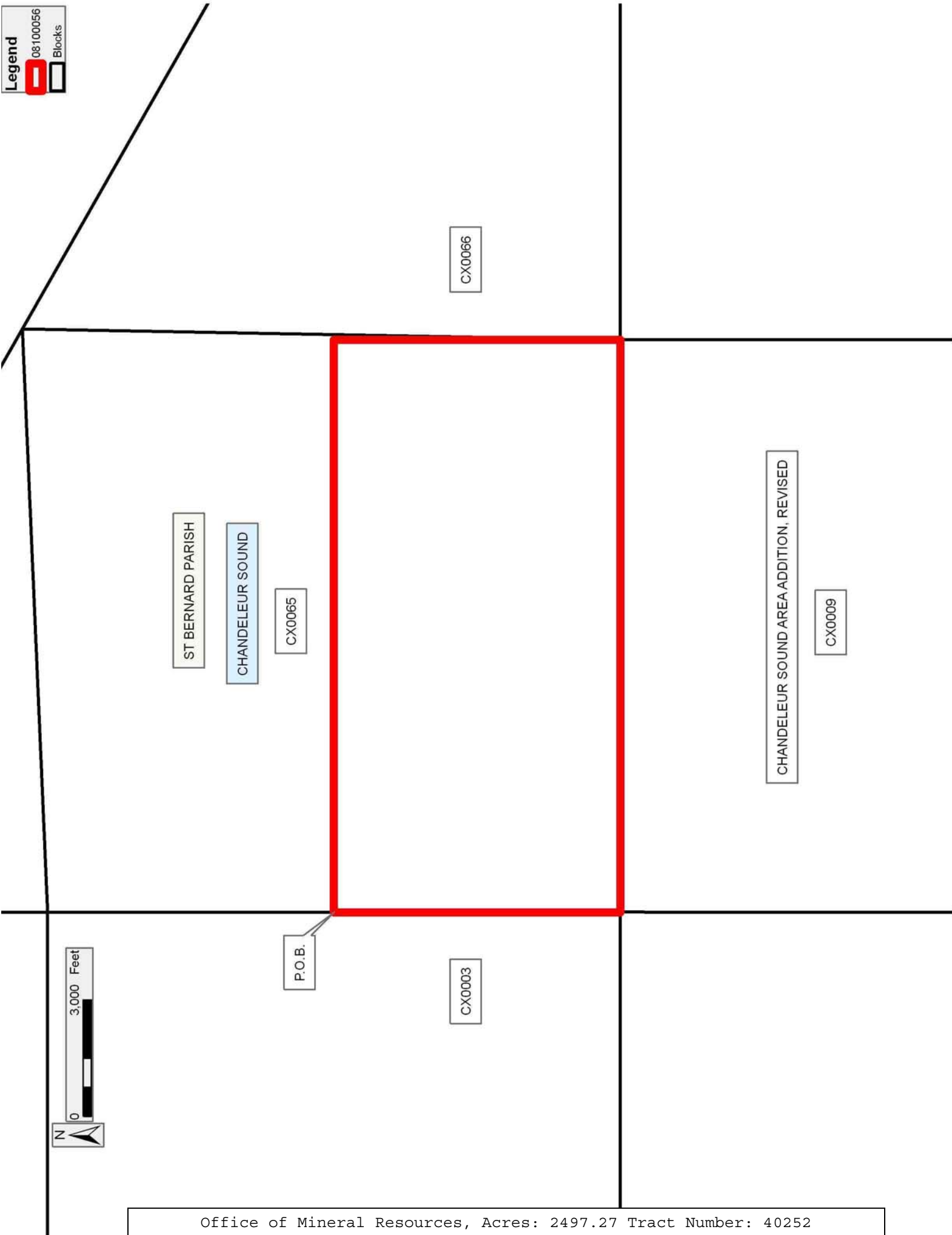
shall not interfere with nor hinder the reasonable surface use by the Department of Natural Resources, its Offices or Commissions, as herein above reserved.

NOTE: The Department of Wildlife and Fisheries has designated certain areas in the coastal waters of the State of Louisiana as Oyster Seed Bed Areas. The exact location of those Seed Bed Areas must be obtained from the Department of Wildlife and Fisheries and any work done under a mineral lease from the State of Louisiana may necessarily be conducted in conformity with the rules and regulations promulgated by the said Department of Wildlife and Fisheries for Oyster Seed Bed Areas.

Applicant: THEOPHILUS OIL, GAS & LAND SERVICES, LLC

Bidder	Cash Payment	Price/ Acre	Rental	Oil	Gas	Other





**TRACT 40253 - Portion of Blocks 3, and 8, Chandeleur Sound Addition Area, Revised, St. Bernard Parish, Louisiana**

All of the lands now or formerly constituting the beds and bottoms of all water bodies of every nature and description as to which title is vested in the State of Louisiana, together with all islands arising therein and other lands formed by accretion or by reliction, where allowed by law, excepting tax adjudicated lands, and not presently under mineral lease on October 8, 2008, situated in St. Bernard Parish, Louisiana, and more particularly described as follows: Beginning at a point lying within Block 3, Chandeleur Sound Area Addition, Revised having Coordinates of X = 2,672,225.00 and Y = 550,955.00; thence East 7,375.00 feet to a point on the East line of said Block 3 having Coordinates of X = 2,679,600.00 and Y = 550,955.00; thence South 7,375.00 feet along the East line of said Block 3 to its Southeast corner, also being the Northeast corner of Block 8 having Coordinates of X = 2,679,600.00 and Y = 543,580.00; thence South 7,375.00 feet along the East line of said Block 8 to a point having Coordinates of X = 2,679,600.00 and Y = 536,205.00; thence West 7,375.00 feet to a point having Coordinates of X = 2,672,225.00 and Y = 536,205.00; thence North 14,750.00 feet to the point of beginning, containing approximately **2,356 acres**, all as more particularly outlined on a plat on file in the Office of Mineral Resources, Department of Natural Resources. All bearings, distances and coordinates are based on Louisiana Coordinate System of 1927, (North or South Zone), where applicable.

NOTE: The above description of the Tract nominated for lease has been provided and corrected, where required, exclusively by the nomination party. Any mineral lease selected from this Tract and awarded by the Louisiana State Mineral Board shall be without warranty of any kind, either express, implied, or statutory, including, but not limited to, the implied warranties of merchantability and fitness for a particular purpose. Should the mineral lease awarded by the Louisiana State Mineral Board be subsequently modified, cancelled or abrogated due to the existence of conflicting leases, operating agreements, private claims or other future obligations or conditions which may affect all or any portion of the leased Tract, it shall not relieve the Lessee of the obligation to pay any bonus due thereon to the Louisiana State Mineral Board, nor shall the Louisiana State Mineral Board be obligated to refund any consideration paid by the Lessor prior to such modification, cancellation, or abrogation, including, but not limited to, bonuses, rentals and royalties.

NOTE: The Office of Mineral Resources will require a minimum bonus of \$130 per acre and a minimum royalty of 21%.

NOTE: The State of Louisiana does hereby reserve, and this lease shall be subject to, the imprescriptible right of surface use in the nature of a servitude in favor of the Department of Natural Resources, including its Offices and Commissions, for the sole purpose of implementing, constructing, servicing and maintaining approved coastal zone management and/or restoration projects. Utilization of any and all rights derived

under this lease by the mineral lessee, its agents, successors or assigns, shall not interfere with nor hinder the reasonable surface use by the Department of Natural Resources, its Offices or Commissions, as herein above reserved.

NOTE: The Department of Wildlife and Fisheries has designated certain areas in the coastal waters of the State of Louisiana as Oyster Seed Bed Areas. The exact location of those Seed Bed Areas must be obtained from the Department of Wildlife and Fisheries and any work done under a mineral lease from the State of Louisiana may necessarily be conducted in conformity with the rules and regulations promulgated by the said Department of Wildlife and Fisheries for Oyster Seed Bed Areas.

Applicant: THEOPHILUS OIL, GAS & LAND SERVICES, LLC

Bidder	Cash Payment	Price/ Acre	Rental	Oil	Gas	Other

Legend

08100055

Blocks

DOQQ2004

ST BERNARD PARISH

CX0003

P.O.B.

CHANDELEUR SOUND

CX0065

CHANDELEUR SOUND AREA ADDITION, REVISED

CX0009

CX0008



**TRACT 40254 - Portion of Block 10, Chandeleur Sound Addition Area, Revised, St. Bernard Parish, Louisiana**

All of the lands now or formerly constituting the beds and bottoms of all water bodies of every nature and description as to which title is vested in the State of Louisiana, together with all islands arising therein and other lands formed by accretion or by reliction, where allowed by law, excepting tax adjudicated lands, and not presently under mineral lease on October 8, 2008, situated in St. Bernard Parish, Louisiana, and more particularly described as follows: Beginning at the Northwest corner of Block 10, Chandeleur Sound Area Addition, Revised having Coordinates of X = 2,694,350.00 and Y = 543,580.00; thence East 14,750.00 feet along the North line of said Block 10 to its Northeast corner having Coordinates of X = 2,709,100.00 and Y = 543,580.00; thence South 7,375.00 feet along the East line of said Block 10 to a point having Coordinates of X = 2,709,100.00 and Y = 536,205.00; thence West 14,750.00 feet to a point on the West line of said Block 10 having Coordinates of X = 2,694,350.00 and Y = 536,205.00; thence North 7,375.00 feet along the West line of said Block 10 to the point of beginning, containing approximately **2,497.27 acres**, all as more particularly outlined on a plat on file in the Office of Mineral Resources, Department of Natural Resources. All bearings, distances and coordinates are based on Louisiana Coordinate System of 1927, (North or South Zone), where applicable.

NOTE: The above description of the Tract nominated for lease has been provided and corrected, where required, exclusively by the nomination party. Any mineral lease selected from this Tract and awarded by the Louisiana State Mineral Board shall be without warranty of any kind, either express, implied, or statutory, including, but not limited to, the implied warranties of merchantability and fitness for a particular purpose. Should the mineral lease awarded by the Louisiana State Mineral Board be subsequently modified, cancelled or abrogated due to the existence of conflicting leases, operating agreements, private claims or other future obligations or conditions which may affect all or any portion of the leased Tract, it shall not relieve the Lessee of the obligation to pay any bonus due thereon to the Louisiana State Mineral Board, nor shall the Louisiana State Mineral Board be obligated to refund any consideration paid by the Lessor prior to such modification, cancellation, or abrogation, including, but not limited to, bonuses, rentals and royalties.

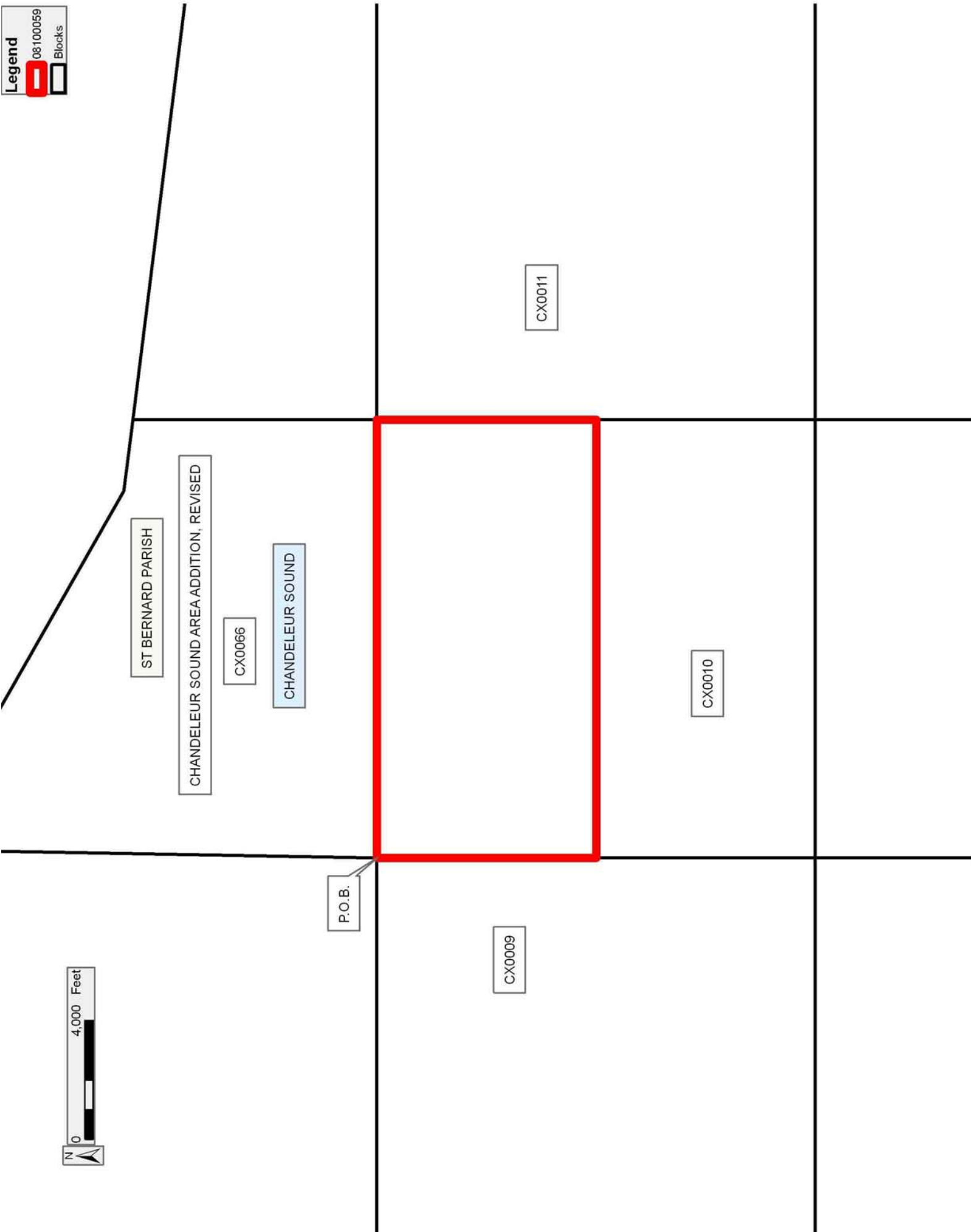
NOTE: The Office of Mineral Resources will require a minimum bonus of \$130 per acre and a minimum royalty of 21%.

NOTE: The State of Louisiana does hereby reserve, and this lease shall be subject to, the imprescriptible right of surface use in the nature of a servitude in favor of the Department of Natural Resources, including its Offices and Commissions, for the sole purpose of implementing, constructing, servicing and maintaining approved coastal zone management and/or restoration projects. Utilization of any and all rights derived under this lease by the mineral lessee, its agents, successors or assigns,

shall not interfere with nor hinder the reasonable surface use by the Department of Natural Resources, its Offices or Commissions, as herein above reserved.

Applicant: THEOPHILUS OIL, GAS & LAND SERVICES, LLC

Bidder	Cash Payment	Price/ Acre	Rental	Oil	Gas	Other



**TRACT 40255 - Portion of Block 9, Chandeleur Sound Addition Area, Revised, St. Bernard Parish, Louisiana**

All of the lands now or formerly constituting the beds and bottoms of all water bodies of every nature and description as to which title is vested in the State of Louisiana, together with all islands arising therein and other lands formed by accretion or by reliction, where allowed by law, excepting tax adjudicated lands, and not presently under mineral lease on October 8, 2008, situated in St. Bernard Parish, Louisiana, and more particularly described as follows: Beginning at the Northwest corner of Block 9, Chandeleur Sound Area Addition, Revised having Coordinates of X = 2,679,600.00 and Y = 543,580.00; thence East 14,750.00 feet along the North line of said Block 9 to its Northeast corner having Coordinates of X = 2,694,350.00 and Y = 543,580.00; thence South 7,375.00 feet along the East line of said Block 9 to a point having Coordinates of X = 2,694,350.00 and Y = 536,205.00; thence West 14,750.00 feet to a point on the West line of said Block 9 having Coordinates of X = 2,679,600.00 and Y = 536,205.00; thence North 7,375.00 feet along the West line of said Block 9 to the point of beginning, containing approximately **2,497.27 acres**, all as more particularly outlined on a plat on file in the Office of Mineral Resources, Department of Natural Resources. All bearings, distances and coordinates are based on Louisiana Coordinate System of 1927, (North or South Zone), where applicable.

NOTE: The above description of the Tract nominated for lease has been provided and corrected, where required, exclusively by the nomination party. Any mineral lease selected from this Tract and awarded by the Louisiana State Mineral Board shall be without warranty of any kind, either express, implied, or statutory, including, but not limited to, the implied warranties of merchantability and fitness for a particular purpose. Should the mineral lease awarded by the Louisiana State Mineral Board be subsequently modified, cancelled or abrogated due to the existence of conflicting leases, operating agreements, private claims or other future obligations or conditions which may affect all or any portion of the leased Tract, it shall not relieve the Lessee of the obligation to pay any bonus due thereon to the Louisiana State Mineral Board, nor shall the Louisiana State Mineral Board be obligated to refund any consideration paid by the Lessor prior to such modification, cancellation, or abrogation, including, but not limited to, bonuses, rentals and royalties.

NOTE: The Office of Mineral Resources will require a minimum bonus of \$130 per acre and a minimum royalty of 21%.

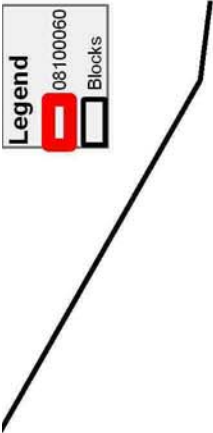
NOTE: The State of Louisiana does hereby reserve, and this lease shall be subject to, the imprescriptible right of surface use in the nature of a servitude in favor of the Department of Natural Resources, including its Offices and Commissions, for the sole purpose of implementing, constructing, servicing and maintaining approved coastal zone management and/or restoration projects. Utilization of any and all rights derived under this lease by the mineral lessee, its agents, successors or assigns,



shall not interfere with nor hinder the reasonable surface use by the Department of Natural Resources, its Offices or Commissions, as herein above reserved.

Applicant: THEOPHILUS OIL, GAS & LAND SERVICES, LLC

Bidder	Cash Payment	Price/ Acre	Rental	Oil	Gas	Other



ST BERNARD PARISH

CX0065

CHANDELEUR SOUND

P.O.B.

CX0008

CX0010

CX0009

**TRACT 40256 - Acadia and Lafayette Parishes, Louisiana**

All of the lands now or formerly constituting the beds and bottoms of all water bodies of every nature and description as to which title is vested in the State of Louisiana, together with all islands arising therein and other lands formed by accretion or by reliction, where allowed by law, excepting tax adjudicated lands, and not presently under mineral lease on October 8, 2008, situated in Acadia and Lafayette Parishes, Louisiana, and more particularly described as follows: Beginning at a point having Coordinates of X = 1,712,100.00 and Y = 546,600.00; thence West 4,557.30 feet to a point having Coordinates of X = 1,707,542.70 and Y = 546,600.00; thence North 12 degrees 21 minutes 32 seconds West 208.84 feet to a point having Coordinates of X = 1,707,498.00 and Y = 546,804.00; thence North 13 degrees 37 minutes 07 seconds West 399.22 feet to a point having Coordinates of X = 1,707,404.00 and Y = 547,192.00; thence North 22 degrees 26 minutes 34 seconds West 348.39 feet to a point having Coordinates of X = 1,707,271.00 and Y = 547,514.00; thence North 30 degrees 51 minutes 09 seconds West 124.36 feet to a point having Coordinates of X = 1,707,207.22 and Y = 547,620.76; thence North 30 degrees 51 minutes 09 seconds West 209.08 feet to a point having Coordinates of X = 1,707,100.00 and Y = 547,800.26; thence North 5,199.74 feet to a point having Coordinates of X = 1,707,100.00 and Y = 553,000.00; thence East 5,000.00 feet to a point having Coordinates of X = 1,712,100.00 and Y = 553,000.00; thence South 6,400.00 feet to a point of beginning, **LESS AND EXCPET**, that portion, if any, of State Lease No. 10754, as amended, that may lie within the above described tract, containing approximately **9 acres**, all as more particularly outlined on a plat on file in the Office of Mineral Resources, Department of Natural Resources. All bearings, distances and coordinates are based on Louisiana Coordinate System of 1927, (North or South Zone), where applicable.

NOTE: The above description of the Tract nominated for lease has been provided and corrected, where required, exclusively by the nomination party. Any mineral lease selected from this Tract and awarded by the Louisiana State Mineral Board shall be without warranty of any kind, either express, implied, or statutory, including, but not limited to, the implied warranties of merchantability and fitness for a particular purpose. Should the mineral lease awarded by the Louisiana State Mineral Board be subsequently modified, cancelled or abrogated due to the existence of conflicting leases, operating agreements, private claims or other future obligations or conditions which may affect all or any portion of the leased Tract, it shall not relieve the Lessee of the obligation to pay any bonus due thereon to the Louisiana State Mineral Board, nor shall the Louisiana State Mineral Board be obligated to refund any consideration paid by the Lessor prior to such modification, cancellation, or abrogation, including, but not limited to, bonuses, rentals and royalties.

Applicant: VOYAGER PETROLEUM, INC.

Bidder	Cash Payment	Price/ Acre	Rental	Oil	Gas	Other



**Legend**

08100020  
Active\_Leases  
Counties  
DOQQ2004

LAFAYETTE PARISH

BAYOU QUEUE DE TORTUE

P.O.B.

ACADIA PARISH

T10S - R2E

SL 10754

SL 5653





**TRACT 40257 - St. Martin Parish, Louisiana**

All of the lands now or formerly constituting the beds and bottoms of all water bodies of every nature and description as to which title is vested in the State of Louisiana, together with all islands arising therein and other lands formed by accretion or by reliction, where allowed by law, excepting tax adjudicated lands, and not presently under mineral lease on October 8, 2008, situated in St. Martin Parish, Louisiana, and more particularly described as follows: Beginning at a point having Coordinates of X = 1,940,800.00 and Y = 529,400.00; thence South 7,100.00 feet to a point having Coordinates of X = 1,940,800.00 and Y = 522,300.00; thence West 2,200.00 feet to a point on the Eastern boundary of State Lease No. 19131 having Coordinates of X = 1,938,600.00 and Y = 522,300.00; thence along the boundary of said State Lease No. 19131 the following courses: North 1,800.00 feet to a point having Coordinates of X = 1,938,600.00 and Y = 524,100.00; West 8,950.00 feet to a point having Coordinates of X = 1,929,650.00 and Y = 524,100.00 and North approximately 2,461 feet to a point on the Southern boundary of State Lease No. 4956 having a Coordinate of X = 1,929,650.00; thence along the boundary of said State Lease No. 4956 the following: Easterly approximately 6,661 feet to its Southeast corner and Northerly approximately 2,751 feet to its Easternmost Northeast corner; thence Easterly approximately 4,459 feet to the point of beginning, **LESS AND EXCEPT** that portion, if any, of State Lease No. 4956 that may lie within the above described tract, (This tract includes only waterbottoms claimed and owned by the state and specifically excludes any land which the state may claim or own and to which the mineral rights are vested in the state), above described tract containing approximately **2 acres**, all as more particularly outlined on a plat on file in the Office of Mineral Resources, Department of Natural Resources. All bearings, distances and coordinates are based on Louisiana Coordinate System of 1927, (North or South Zone), where applicable.

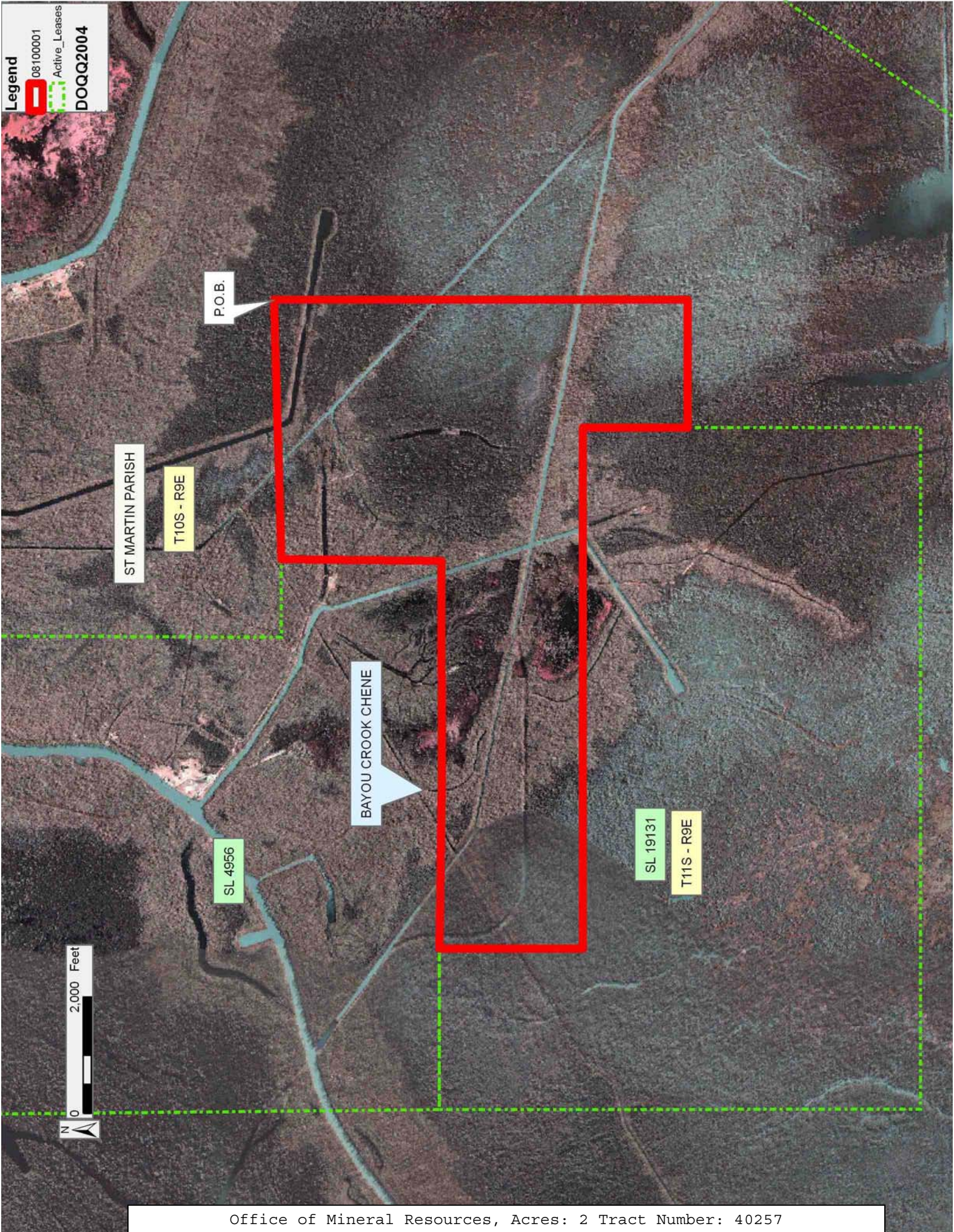
NOTE: The above description of the Tract nominated for lease has been provided and corrected, where required, exclusively by the nomination party. Any mineral lease selected from this Tract and awarded by the Louisiana State Mineral Board shall be without warranty of any kind, either express, implied, or statutory, including, but not limited to, the implied warranties of merchantability and fitness for a particular purpose. Should the mineral lease awarded by the Louisiana State Mineral Board be subsequently modified, cancelled or abrogated due to the existence of conflicting leases, operating agreements, private claims or other future obligations or conditions which may affect all or any portion of the leased Tract, it shall not relieve the Lessee of the obligation to pay any bonus due thereon to the Louisiana State Mineral Board, nor shall the Louisiana State Mineral Board be obligated to refund any consideration paid by the Lessor prior to such modification, cancellation, or abrogation, including, but not limited to, bonuses, rentals and royalties.

Applicant: FLEETWOOD RESOURCES, INC.

Bidder	Cash Payment	Price/ Acre	Rental	Oil	Gas	Other



**Legend**  
08100001  
Active\_Leases  
DOQQ2004





**TRACT 40258 - St. Martin Parish, Louisiana**

All of the lands now or formerly constituting the beds and bottoms of all water bodies of every nature and description as to which title is vested in the State of Louisiana, together with all islands arising therein and other lands formed by accretion or by reliction, where allowed by law, excepting tax adjudicated lands, and not presently under mineral lease on October 8, 2008, situated in St. Martin Parish, Louisiana, and more particularly described as follows: Beginning at a point having Coordinates of X = 1,940,800.00 and Y = 529,400.00; thence East 5,700.00 feet to a point having Coordinates of X = 1,946,500.00 and Y = 529,400.00; thence South approximately 8,136 feet to a point on the Northern boundary of State Lease No. 411, as amended, having a Coordinate of X = 1,946,500.00; thence along the boundary of said State Lease No. 411 the following: Westerly approximately 131 feet to its Northernmost Northwest corner and Southwesterly approximately 3,600 feet to a point that intersects an East-West line having a Coordinate of Y = 518,300.00; thence West approximately 5,724 feet along said line to the Southeast corner of State Lease No. 19131 having Coordinates of X = 1,938,600.00 and Y = 518,300.00; thence North 4,000.00 feet along the East boundary of said State Lease No. 19131 to a point having Coordinates of X = 1,938,600.00 and Y = 522,300.00; thence East 2,200.00 feet to a point having Coordinates of X = 1,940,800.00 and Y = 522,300.00; thence North 7,100.00 feet to the point of beginning, **LESS AND EXCEPT** that portion, if any, of State Lease No. 411, as amended, that may lie within the above described tract, (This tract includes only waterbottoms claimed and owned by the state and specifically excludes any land which the state may claim or own and to which the mineral rights are vested in the state), containing approximately **188 acres**, all as more particularly outlined on a plat on file in the Office of Mineral Resources, Department of Natural Resources. All bearings, distances and coordinates are based on Louisiana Coordinate System of 1927, (North or South Zone), where applicable.

NOTE: The above description of the Tract nominated for lease has been provided and corrected, where required, exclusively by the nomination party. Any mineral lease selected from this Tract and awarded by the Louisiana State Mineral Board shall be without warranty of any kind, either express, implied, or statutory, including, but not limited to, the implied warranties of merchantability and fitness for a particular purpose. Should the mineral lease awarded by the Louisiana State Mineral Board be subsequently modified, cancelled or abrogated due to the existence of conflicting leases, operating agreements, private claims or other future obligations or conditions which may affect all or any portion of the leased Tract, it shall not relieve the Lessee of the obligation to pay any bonus due thereon to the Louisiana State Mineral Board, nor shall the Louisiana State Mineral Board be obligated to refund any consideration paid by the Lessor prior to such modification, cancellation, or abrogation, including, but not limited to, bonuses, rentals and royalties.

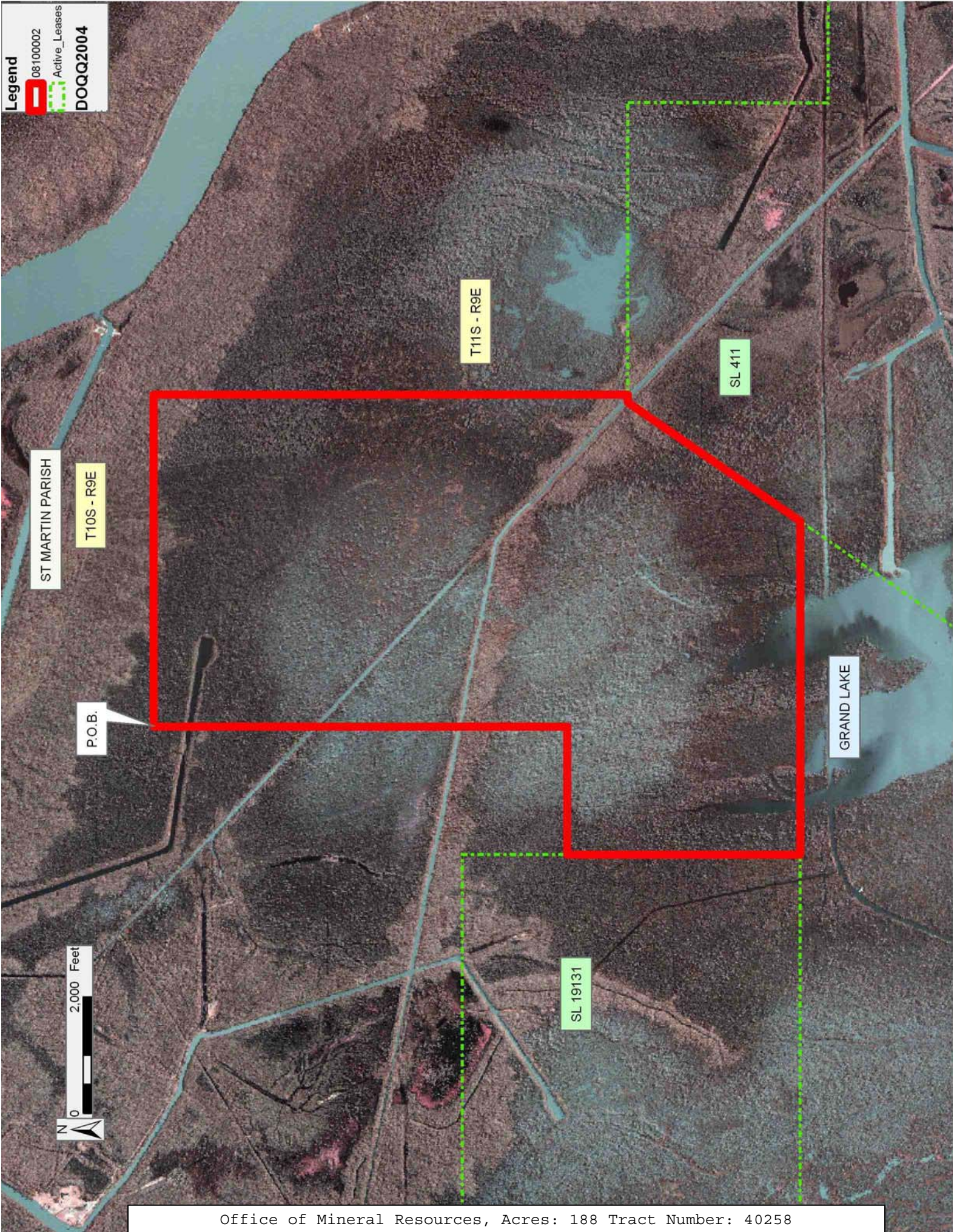
Applicant: FLEETWOOD RESOURCES, INC.

Bidder	Cash Payment	Price/ Acre	Rental	Oil	Gas	Other



**Legend**

08100002  
Active\_Leases  
DOQQ2004





**TRACT 40259 - St. Martin Parish, Louisiana**

All of the lands now or formerly constituting the beds and bottoms of all water bodies of every nature and description as to which title is vested in the State of Louisiana, together with all islands arising therein and other lands formed by accretion or by reliction, where allowed by law, excepting tax adjudicated lands, and not presently under mineral lease on October 8, 2008, situated in St. Martin Parish, Louisiana, and more particularly described as follows: Beginning a point having Coordinates of X = 1,916,100.00 and Y = 526,564.31; thence Easterly approximately 10,792 feet to Southwest corner of State Lease No. 4956, also being the Northwest corner of State Lease No. 19131; thence Southerly approximately 8,264 feet along the West boundary of said State Lease No. 19131 to its Southwest corner having Coordinates of X = 1,926,900.00 and Y = 518,300.00; thence South 5,800.00 feet to a point having Coordinates of X = 1,926,900.00 and Y = 512,500.00; thence West 10,800.00 feet to a point having Coordinates of X = 1,916,100.00 and Y = 512,500.00; thence North 14,064.31 feet to the point of beginning, **LESS AND EXCEPT**, that portion, if any, of State Lease No. 4956 and State Lease No. 19131 that may lie within the above described tract, (This tract includes only waterbottoms claimed and owned by the state and specifically excludes any land which the state may claim or own and to which the mineral rights are vested in the state), above described tract containing approximately **93 acres**, all as more particularly outlined on a plat on file in the Office of Mineral Resources, Department of Natural Resources. All bearings, distances and coordinates are based on Louisiana Coordinate System of 1927, (North or South Zone), where applicable.

NOTE: The above description of the Tract nominated for lease has been provided and corrected, where required, exclusively by the nomination party. Any mineral lease selected from this Tract and awarded by the Louisiana State Mineral Board shall be without warranty of any kind, either express, implied, or statutory, including, but not limited to, the implied warranties of merchantability and fitness for a particular purpose. Should the mineral lease awarded by the Louisiana State Mineral Board be subsequently modified, cancelled or abrogated due to the existence of conflicting leases, operating agreements, private claims or other future obligations or conditions which may affect all or any portion of the leased Tract, it shall not relieve the Lessee of the obligation to pay any bonus due thereon to the Louisiana State Mineral Board, nor shall the Louisiana State Mineral Board be obligated to refund any consideration paid by the Lessor prior to such modification, cancellation, or abrogation, including, but not limited to, bonuses, rentals and royalties.

Applicant: FLEETWOOD RESOURCES, INC.

Bidder	Cash Payment	Price/ Acre	Rental	Oil	Gas	Other



**Legend**

08100003  
Active\_Leases  
DOQQ2004

