

TRACT 40240 - Caldwell Parish, Louisiana

All of the lands now or formerly constituting the beds and bottoms of all water bodies of every nature and description as to which title is vested in the State of Louisiana, together with all islands arising therein and other lands formed by accretion or by reliction, where allowed by law, excepting tax adjudicated lands, and not presently under mineral lease on October 8, 2008, situated in Caldwell Parish, Louisiana, and more particularly described as follows: Beginning at a point on the South boundary of State Lease No. 18790 having Coordinates of X = 2,142,155.00 and Y = 542,982.00; thence East 8,021.00 feet along the South boundary of said State Lease No. 18790 to its Southeast corner having Coordinates of X = 2,150,176.00 and Y = 542,982.00; thence East approximately 2,518 feet to a point of intersection with the boundary of Boeuf Wildlife Management Area having a Coordinate of Y = 542,982.00; thence Southerly and Southeasterly along the meanders of the boundary of said Boeuf Wildlife Management Area to the point of intersection with an East-West line having a Coordinate of Y = 533,171.00; thence West approximately 12,597 feet along said East-West line to a point having Coordinates of X = 2,142,155.00 and Y = 533,171.00; thence North 9,811.00 feet to the point of beginning, **LESS AND EXCEPT** that portion, if any, of the Boeuf Wildlife Management Area which may lie within the above described tract, containing approximately **115 acres**, all as more particularly outlined on a plat on file in the Office of Mineral Resources, Department of Natural Resources. All bearings, distances and coordinates are based on Louisiana Coordinate System of 1927, (North or South Zone), where applicable.

NOTE: The above description of the Tract nominated for lease has been provided and corrected, where required, exclusively by the nomination party. Any mineral lease selected from this Tract and awarded by the Louisiana State Mineral Board shall be without warranty of any kind, either express, implied, or statutory, including, but not limited to, the implied warranties of merchantability and fitness for a particular purpose. Should the mineral lease awarded by the Louisiana State Mineral Board be subsequently modified, cancelled or abrogated due to the existence of conflicting leases, operating agreements, private claims or other future obligations or conditions which may affect all or any portion of the leased Tract, it shall not relieve the Lessee of the obligation to pay any bonus due thereon to the Louisiana State Mineral Board, nor shall the Louisiana State Mineral Board be obligated to refund any consideration paid by the Lessor prior to such modification, cancellation, or abrogation, including, but not limited to, bonuses, rentals and royalties.

Bidder	Cash Payment	Price/Acre	Rental	Oil	Gas	Other

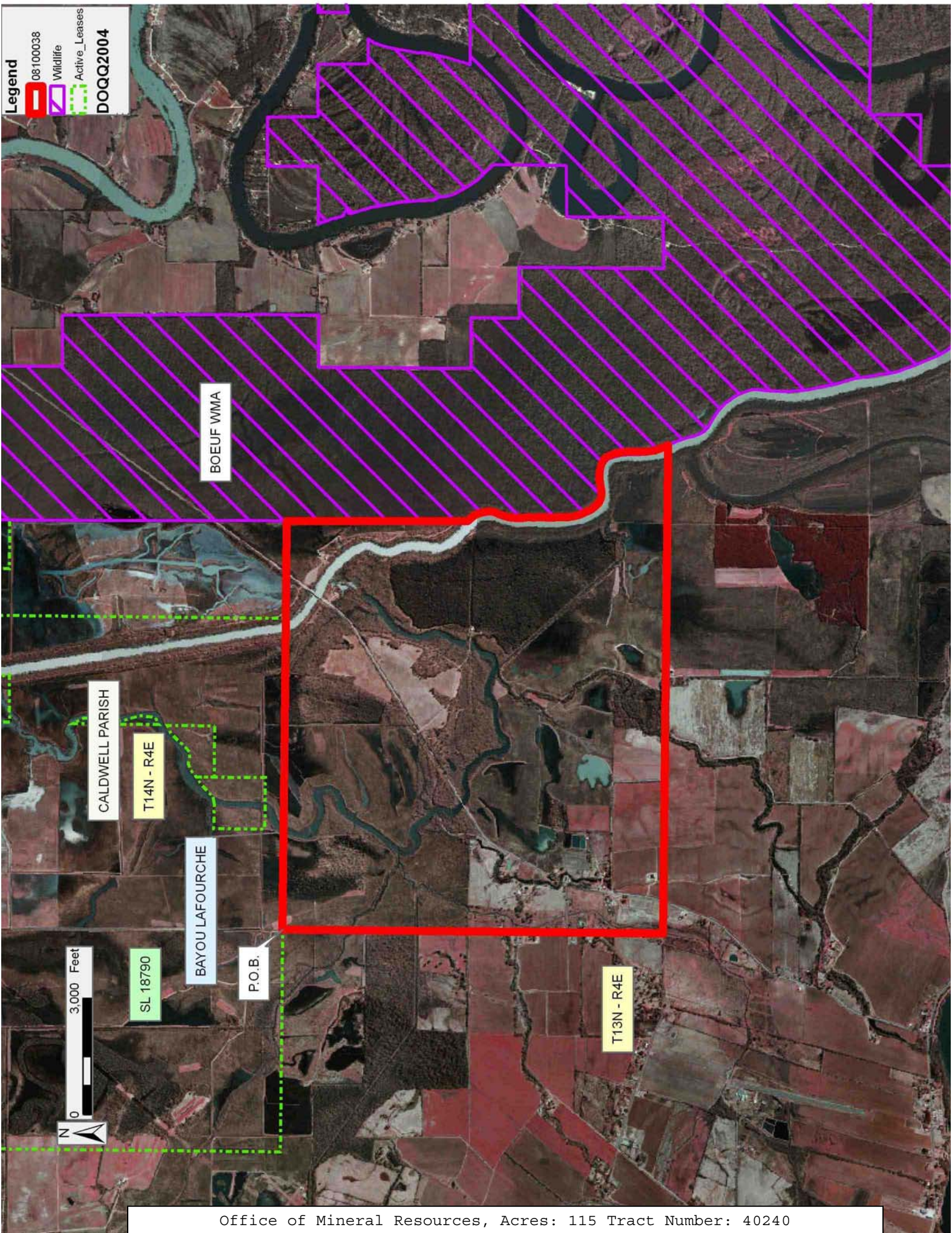
--	--	--	--	--	--	--

Applicant: MAPLE RESOURCES

Legend

-  08100038
-  Wildlife
-  Active_Leases

DOQQ2004



BOEUF WMA

CALDWELL PARISH

T14N - R4E

BAYOU LAFOURCHE

P.O.B.

SL 18790

T13N - R4E

0 3,000 Feet



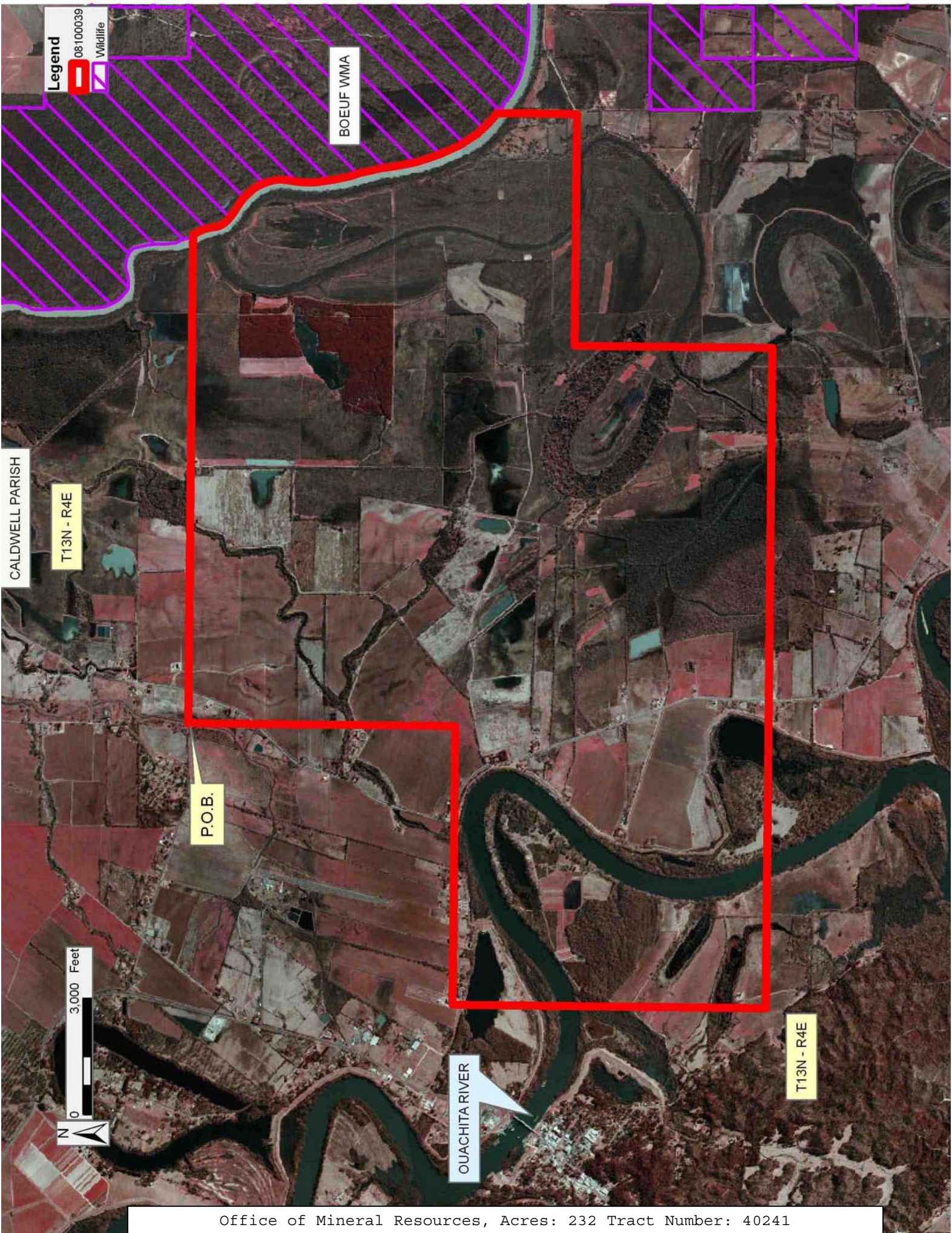
TRACT 40241 - Caldwell Parish, Louisiana

All of the lands now or formerly constituting the beds and bottoms of all water bodies of every nature and description as to which title is vested in the State of Louisiana, together with all islands arising therein and other lands formed by accretion or by reliction, where allowed by law, excepting tax adjudicated lands, and not presently under mineral lease on October 8, 2008, situated in Caldwell Parish, Louisiana, and more particularly described as follows: Beginning at a point having Coordinates of X = 2,142,155.00 and Y = 533,171.00; thence East approximately 12,597 feet to a point of intersection with the Boeuf Wildlife Management Area having a Coordinate of Y = 533,171.00; thence Southeasterly along the meanders of the boundary of said Boeuf Wildlife Management Area to a point of intersection with a North-South line having a Coordinate of X = 2,157,970.00; thence South approximately 2,071 feet along said line to a point having Coordinates of X = 2,157,970.00 and Y = 523,310.00; thence West 5,973.00 feet to a point having Coordinates of X = 2,151,997.00 and Y = 523,310.00; thence South 5,105.00 feet to a point having Coordinates of X = 2,151,997.00 and Y = 518,205.00; thence West 17,027.00 feet to a point having Coordinates of X = 2,134,970.00 and Y = 518,205.00; thence North 8,072.00 feet to a point having Coordinates of X = 2,134,970.00 and Y = 526,277.00; thence East 7,185.00 feet to a point having Coordinates of X = 2,142,155.00 and Y = 526,277.00; thence North 6,894.00 feet to the point of beginning, **LESS AND EXCEPT** that portion, if any, of the Boeuf Wildlife Management Area which may lie within the above described tract, containing approximately **232 acres**, all as more particularly outlined on a plat on file in the Office of Mineral Resources, Department of Natural Resources. All bearings, distances and coordinates are based on Louisiana Coordinate System of 1927, (North or South Zone), where applicable.

NOTE: The above description of the Tract nominated for lease has been provided and corrected, where required, exclusively by the nomination party. Any mineral lease selected from this Tract and awarded by the Louisiana State Mineral Board shall be without warranty of any kind, either express, implied, or statutory, including, but not limited to, the implied warranties of merchantability and fitness for a particular purpose. Should the mineral lease awarded by the Louisiana State Mineral Board be subsequently modified, cancelled or abrogated due to the existence of conflicting leases, operating agreements, private claims or other future obligations or conditions which may affect all or any portion of the leased Tract, it shall not relieve the Lessee of the obligation to pay any bonus due thereon to the Louisiana State Mineral Board, nor shall the Louisiana State Mineral Board be obligated to refund any consideration paid by the Lessor prior to such modification, cancellation, or abrogation, including, but not limited to, bonuses, rentals and royalties.

Applicant: MAPLE RESOURCES

Bidder	Cash Payment	Price/Acre	Rental	Oil	Gas	Other



Legend
08100039
Wildlife

BOEUF WMA

CALDWELL PARISH

T13N - R4E

P.O.B.

OUACHITA RIVER

T13N - R4E

3,000 Feet



TRACT 40242 - Caldwell Parish, Louisiana

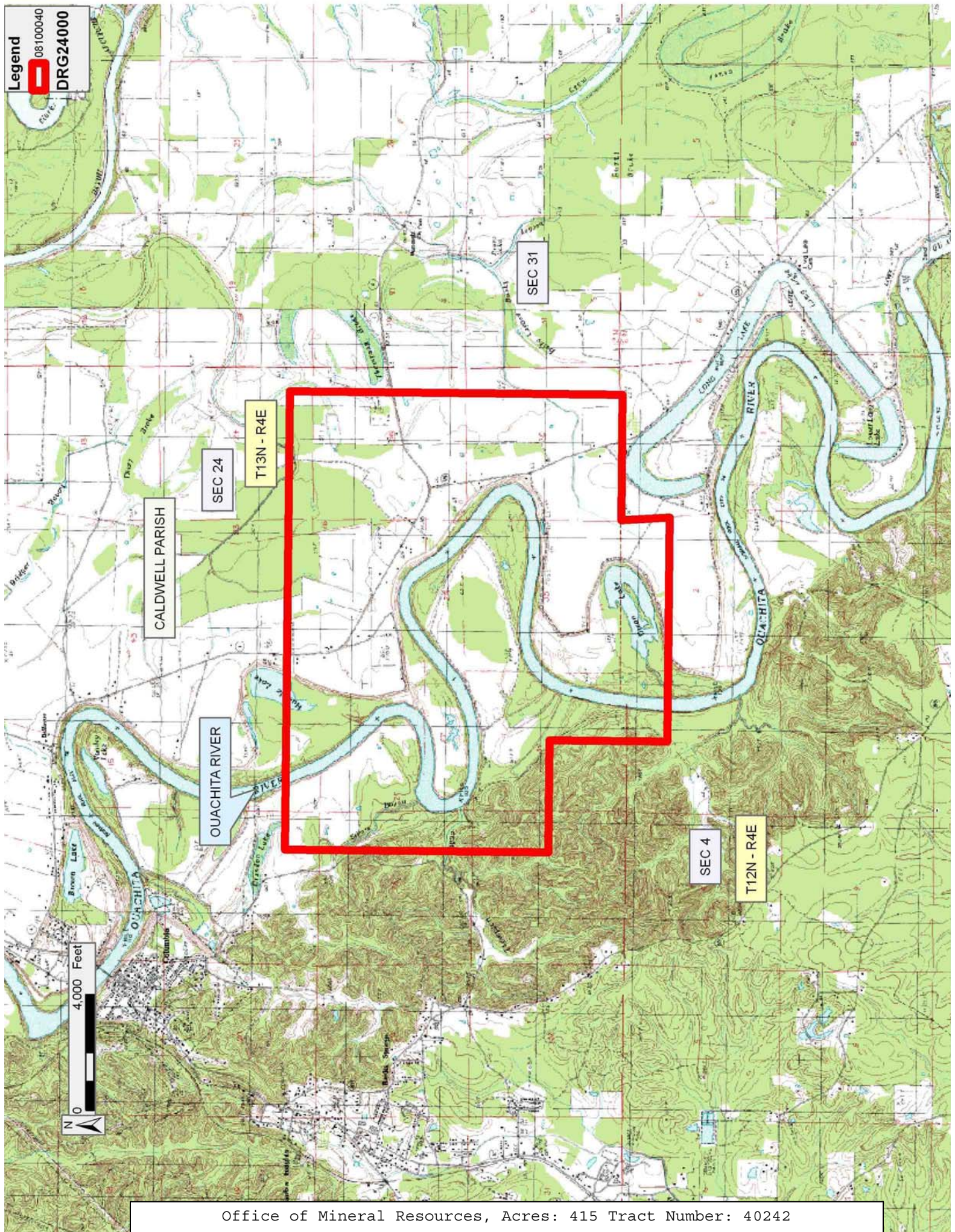
All of the lands now or formerly constituting the beds and bottoms of all water bodies of every nature and description as to which title is vested in the State of Louisiana, together with all islands arising therein and other lands formed by accretion or by reliction, where allowed by law, excepting tax adjudicated lands, and not presently under mineral lease on October 8, 2008, situated in Caldwell Parish, Louisiana, and more particularly described as follows: Beginning at a point having Coordinates of X = 2,136,172.00 and Y = 518,205.00; thence East 15,825.00 feet to a point having Coordinates of X = 2,151,997.00 and Y = 518,205.00; thence South 11,482.00 feet to a point having Coordinates of X = 2,151,997.00 and Y = 506,723.00; thence West 4,339.00 feet to a point having Coordinates of X = 2,147,658.00 and Y = 506,723.00; thence South 03 degrees 59 minutes 16 seconds East 1,668.04 feet to a point having Coordinates of X = 2,147,774.00 and Y = 505,059.00; thence West 7,729.00 feet to a point having Coordinates of X = 2,140,045.00 and Y = 505,059.00; thence North 4,055.00 feet to a point having Coordinates of X = 2,140,045.00 and Y = 509,114.00; thence West 3,873.00 feet to a point having Coordinates of X = 2,136,172.00 and Y = 509,114.00; thence North 9,091.00 feet to the point of beginning, (This tract includes only waterbottoms claimed and owned by the state and specifically excludes any land which the state may claim or own and to which the mineral rights are vested in the state), above described tract containing approximately **415 acres**, all as more particularly outlined on a plat on file in the Office of Mineral Resources, Department of Natural Resources. All bearings, distances and coordinates are based on Louisiana Coordinate System of 1927, (North or South Zone), where applicable.

NOTE: The above description of the Tract nominated for lease has been provided and corrected, where required, exclusively by the nomination party. Any mineral lease selected from this Tract and awarded by the Louisiana State Mineral Board shall be without warranty of any kind, either express, implied, or statutory, including, but not limited to, the implied warranties of merchantability and fitness for a particular purpose. Should the mineral lease awarded by the Louisiana State Mineral Board be subsequently modified, cancelled or abrogated due to the existence of conflicting leases, operating agreements, private claims or other future obligations or conditions which may affect all or any portion of the leased Tract, it shall not relieve the Lessee of the obligation to pay any bonus due thereon to the Louisiana State Mineral Board, nor shall the Louisiana State Mineral Board be obligated to refund any consideration paid by the Lessor prior to such modification, cancellation, or abrogation, including, but not limited to, bonuses, rentals and royalties.

Applicant: MAPLE RESOURCES

Bidder	Cash Payment	Price/Acre	Rental	Oil	Gas	Other

Legend
08100040
DRG24000



TRACT 40243 - Pointe Coupee and St. Landry Parishes, Louisiana

All of the lands now or formerly constituting the beds and bottoms of all water bodies of every nature and description as to which title is vested in the State of Louisiana, together with all islands arising therein and other lands formed by accretion or by reliction, where allowed by law, excepting tax adjudicated lands, and not presently under mineral lease on October 8, 2008, situated in Pointe Coupee and St. Landry Parishes, Louisiana, and more particularly described as follows: Beginning at a point having Coordinates of X = 1,871,028.00 and Y = 765,735.00; thence South 18,480.00 feet to a point having Coordinates of X = 1,871,028.00 and Y = 747,255.00; thence West 18,480.00 feet to a point having Coordinates of X = 1,852,548.00 and Y = 747,255.00; thence North 5,585.90 feet to a point on the South boundary of State Lease No. 19772 having Coordinates of X = 1,852,548.00 and Y = 752,840.90; thence along the boundary of said State Lease No. 19772 the following: East 1,619.86 feet to a point having Coordinates of X = 1,854,167.86 and Y = 752,840.90 and Northerly approximately 5,236 feet to a point on the South boundary of State Lease No. 7716, as amended; thence along the boundary of said State Lease No. 7716 the following: Easterly approximately 5,440 feet to its Southeast corner; Northerly approximately 2,810 feet to its Northeast corner and Westerly approximately 5,515 feet to its Northwest corner; thence Westerly approximately 1,441 feet to the Easternmost Southeast corner of State Lease No. 7715, as amended; thence Northerly approximately 4,931 feet along the Eastern boundary of said State Lease No. 7715 to the point of intersection with an East-West line having a Coordinate of Y = 765,735.00; thence Easterly approximately 18,216 feet along said line to the point of beginning, **LESS AND EXCEPT** that portion, if any, of State Lease No. 7715, as amended, State Lease No. 7716, as amended, and State Lease No. 19772 that may lie within the above described tract, containing approximately **734 acres**, all as more particularly outlined on a plat on file in the Office of Mineral Resources, Department of Natural Resources. All bearings, distances and coordinates are based on Louisiana Coordinate System of 1927, (North or South Zone), where applicable.

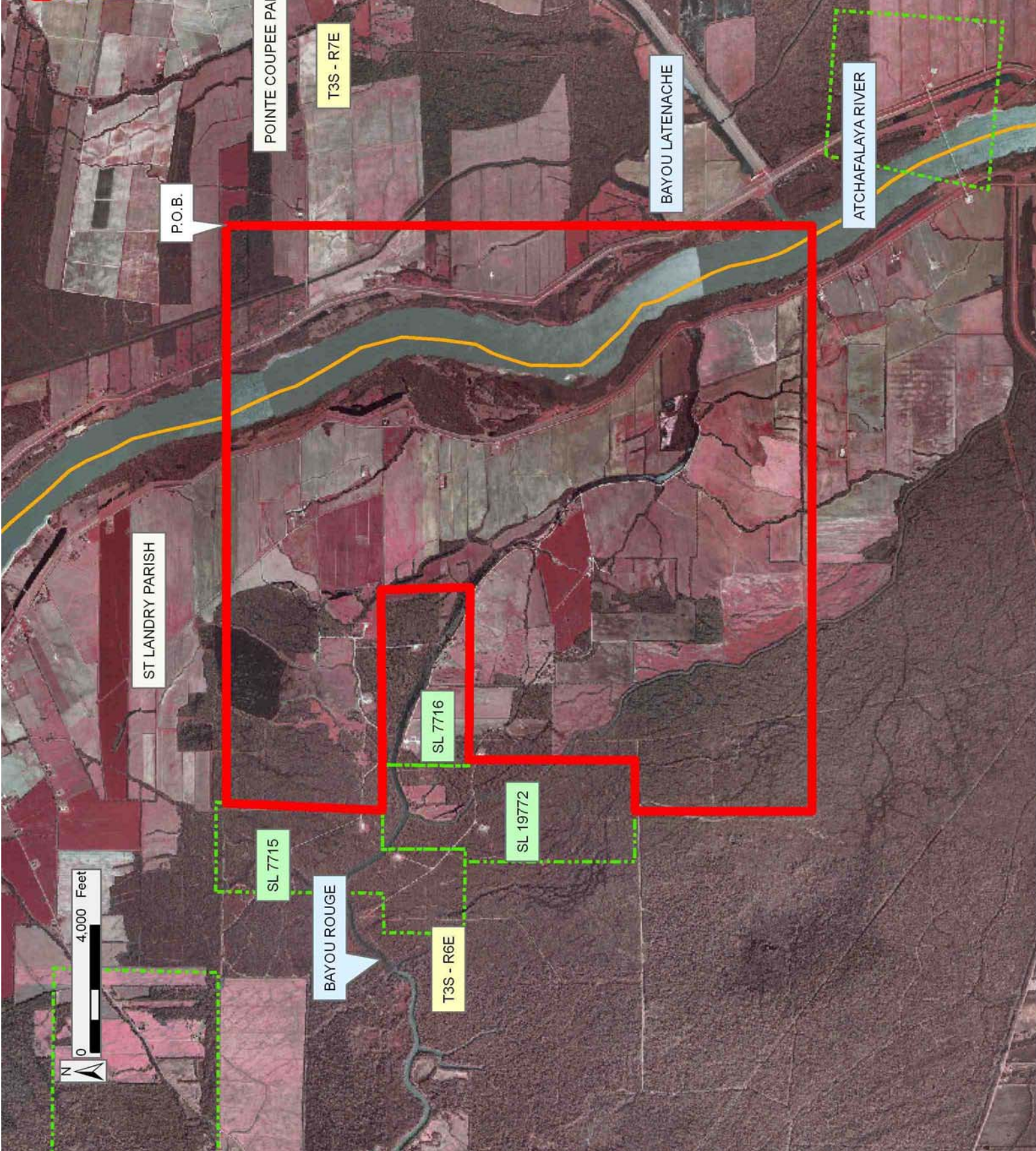
NOTE: The above description of the Tract nominated for lease has been provided and corrected, where required, exclusively by the nomination party. Any mineral lease selected from this Tract and awarded by the Louisiana State Mineral Board shall be without warranty of any kind, either express, implied, or statutory, including, but not limited to, the implied warranties of merchantability and fitness for a particular purpose. Should the mineral lease awarded by the Louisiana State Mineral Board be subsequently modified, cancelled or abrogated due to the existence of conflicting leases, operating agreements, private claims or other future obligations or conditions which may affect all or any portion of the leased Tract, it shall not relieve the Lessee of the obligation to pay any bonus due thereon to the Louisiana State Mineral Board, nor shall the Louisiana State Mineral Board be obligated to refund any consideration paid by the Lessor prior to such modification, cancellation, or abrogation, including, but not limited to, bonuses, rentals and royalties.

Applicant: WOODLAND PETROLEUM CORPORATION

Bidder	Cash Payment	Price/Acre	Rental	Oil	Gas	Other

Legend

- 08100041
- - - Active_Leases
- Counties
- DOQQ2004



TRACT 40244 - St. Landry Parish, Louisiana

All of the lands now or formerly constituting the beds and bottoms of all water bodies of every nature and description as to which title is vested in the State of Louisiana, together with all islands arising therein and other lands formed by accretion or by reliction, where allowed by law, excepting tax adjudicated lands, and not presently under mineral lease on October 8, 2008, situated in St. Landry Parish, Louisiana, and more particularly described as follows: Beginning at a point having Coordinates of X = 1,834,068.00 and Y = 765,735.00; thence Easterly approximately 15,939 feet to a point on the Western boundary of State Lease No. 7715, as amended, having a Coordinate of Y = 765,735.00; thence along the boundary of said State Lease No. 7715 the following: Southerly approximately 4,962 feet to a point; Westerly approximately 1,242 feet to its Westernmost Northwest corner; Southerly approximately 2,534 feet to its Southwest corner and Easterly approximately 2,259 feet to the Westernmost Northwest corner of State Lease No. 19772; thence along the boundary of said State Lease No. 19772 the following: Southerly approximately 5,356 feet to its Southwest corner having Coordinates of X = 1,850,961.51 and Y = 752,840.90 and East 1,586.49 feet to a point having Coordinates of X = 1,852,548.00 and Y = 752,840.90; thence South 5,585.90 feet to a point having Coordinates of X = 1,852,548.00 and Y = 747,255.00; thence West 18,480.00 feet to a point having Coordinates of X = 1,834,068.00 and Y = 747,255.00; thence North 18,480.00 feet to the point of beginning, **LESS AND EXCEPT** that portion, if any, of State Lease No. 7715, as amended, and State Lease No. 19772 that may lie within the above described tract, containing approximately **84 acres**, all as more particularly outlined on a plat on file in the Office of Mineral Resources, Department of Natural Resources. All bearings, distances and coordinates are based on Louisiana Coordinate System of 1927, (North or South Zone), where applicable.

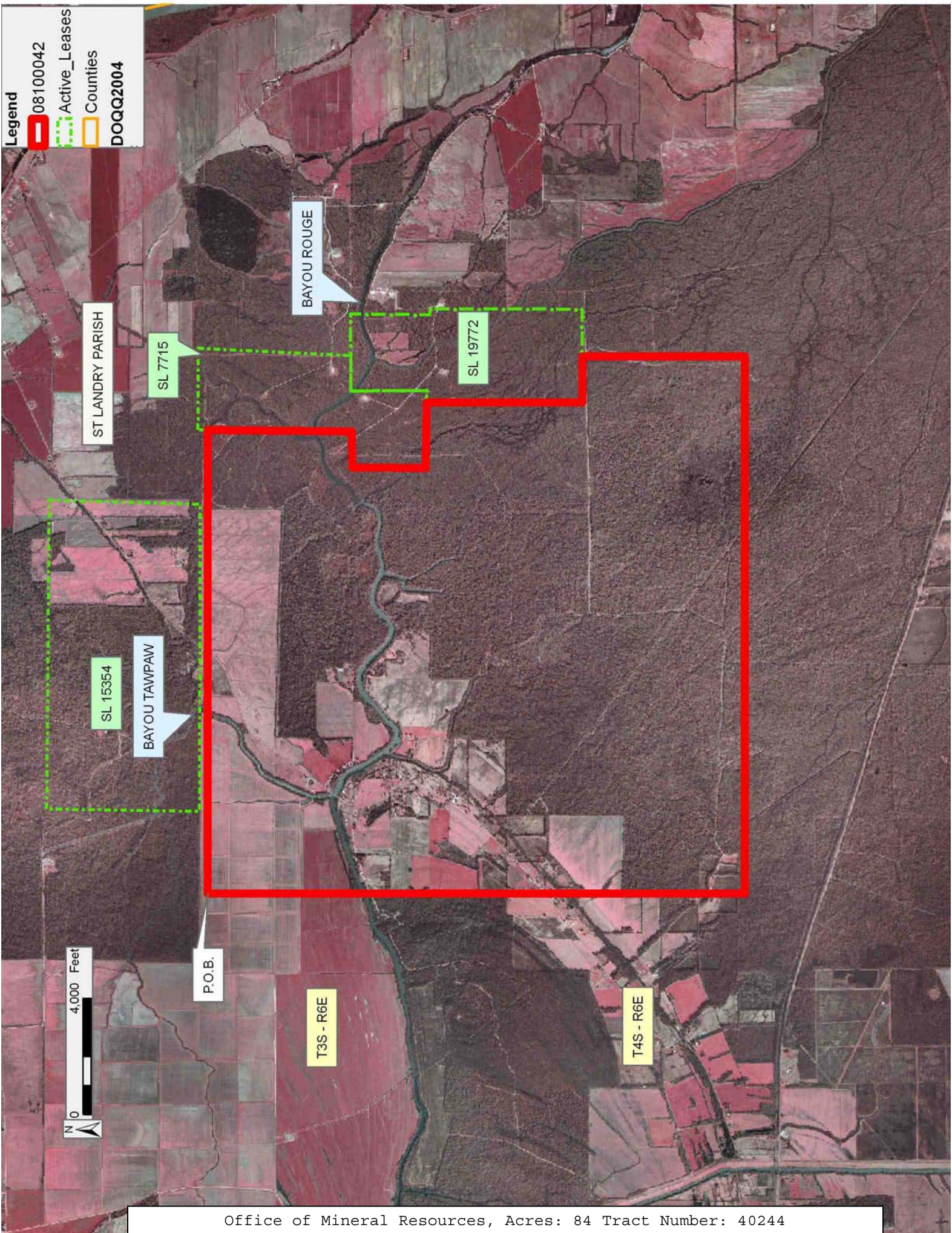
NOTE: The above description of the Tract nominated for lease has been provided and corrected, where required, exclusively by the nomination party. Any mineral lease selected from this Tract and awarded by the Louisiana State Mineral Board shall be without warranty of any kind, either express, implied, or statutory, including, but not limited to, the implied warranties of merchantability and fitness for a particular purpose. Should the mineral lease awarded by the Louisiana State Mineral Board be subsequently modified, cancelled or abrogated due to the existence of conflicting leases, operating agreements, private claims or other future obligations or conditions which may affect all or any portion of the leased Tract, it shall not relieve the Lessee of the obligation to pay any bonus due thereon to the Louisiana State Mineral Board, nor shall the Louisiana State Mineral Board be obligated to refund any consideration paid by the Lessor prior to such modification, cancellation, or abrogation, including, but not limited to, bonuses, rentals and royalties.

Applicant: WOODLAND PETROLEUM CORPORATION

Bidder	Cash Payment	Price/Acre	Rental	Oil	Gas	Other

Legend

- 08100042
- Active_Leases
- Counties
- DOQQ2004**



TRACT 40245 - St. Landry Parish, Louisiana

All of the lands now or formerly constituting the beds and bottoms of all water bodies of every nature and description as to which title is vested in the State of Louisiana, together with all islands arising therein and other lands formed by accretion or by reliction, where allowed by law, excepting tax adjudicated lands, and not presently under mineral lease on October 8, 2008, situated in St. Landry Parish, Louisiana, and more particularly described as follows: Beginning at a point having Coordinates of X = 1,778,363.30 and Y = 660,639.51; thence North 12,000.00 feet to a point having Coordinates of X = 1,778,363.30 and Y = 672,639.51; thence East approximately 15,251 feet to a point on the West boundary of State Lease No. 4917, as amended, having a Coordinate of Y = 672,639.51; thence along the boundary of said State Lease No. 4917 the following: Southeasterly approximately 366 feet to its Southernmost point and Northeasterly approximately 405 feet to a point of intersection with an East-West line having a Coordinate Y = 672,639.51; thence East approximately 2,318 feet along said line to a point having Coordinates of X = 1,796,363.30 and Y = 672,639.51; thence South 12,000.00 feet to a point having Coordinates of X = 1,796,363.30 and Y = 660,639.51; thence West 18,000.00 feet to the point of beginning, **LESS AND EXCEPT** that portion, if any, of State Lease No. 4917, as amended, which may lie within the above described tract, containing approximately **39 acres**, all as more particularly outlined on a plat on file in the Office of Mineral Resources, Department of Natural Resources. All bearings, distances and coordinates are based on Louisiana Coordinate System of 1927, (North or South Zone), where applicable.

NOTE: The above description of the Tract nominated for lease has been provided and corrected, where required, exclusively by the nomination party. Any mineral lease selected from this Tract and awarded by the Louisiana State Mineral Board shall be without warranty of any kind, either express, implied, or statutory, including, but not limited to, the implied warranties of merchantability and fitness for a particular purpose. Should the mineral lease awarded by the Louisiana State Mineral Board be subsequently modified, cancelled or abrogated due to the existence of conflicting leases, operating agreements, private claims or other future obligations or conditions which may affect all or any portion of the leased Tract, it shall not relieve the Lessee of the obligation to pay any bonus due thereon to the Louisiana State Mineral Board, nor shall the Louisiana State Mineral Board be obligated to refund any consideration paid by the Lessor prior to such modification, cancellation, or abrogation, including, but not limited to, bonuses, rentals and royalties.

Applicant: CYPRESS ENERGY CORPORATION

Bidder	Cash Payment	Price/Acre	Rental	Oil	Gas	Other

Legend
08100035
Active_Leases
DOQQ2004



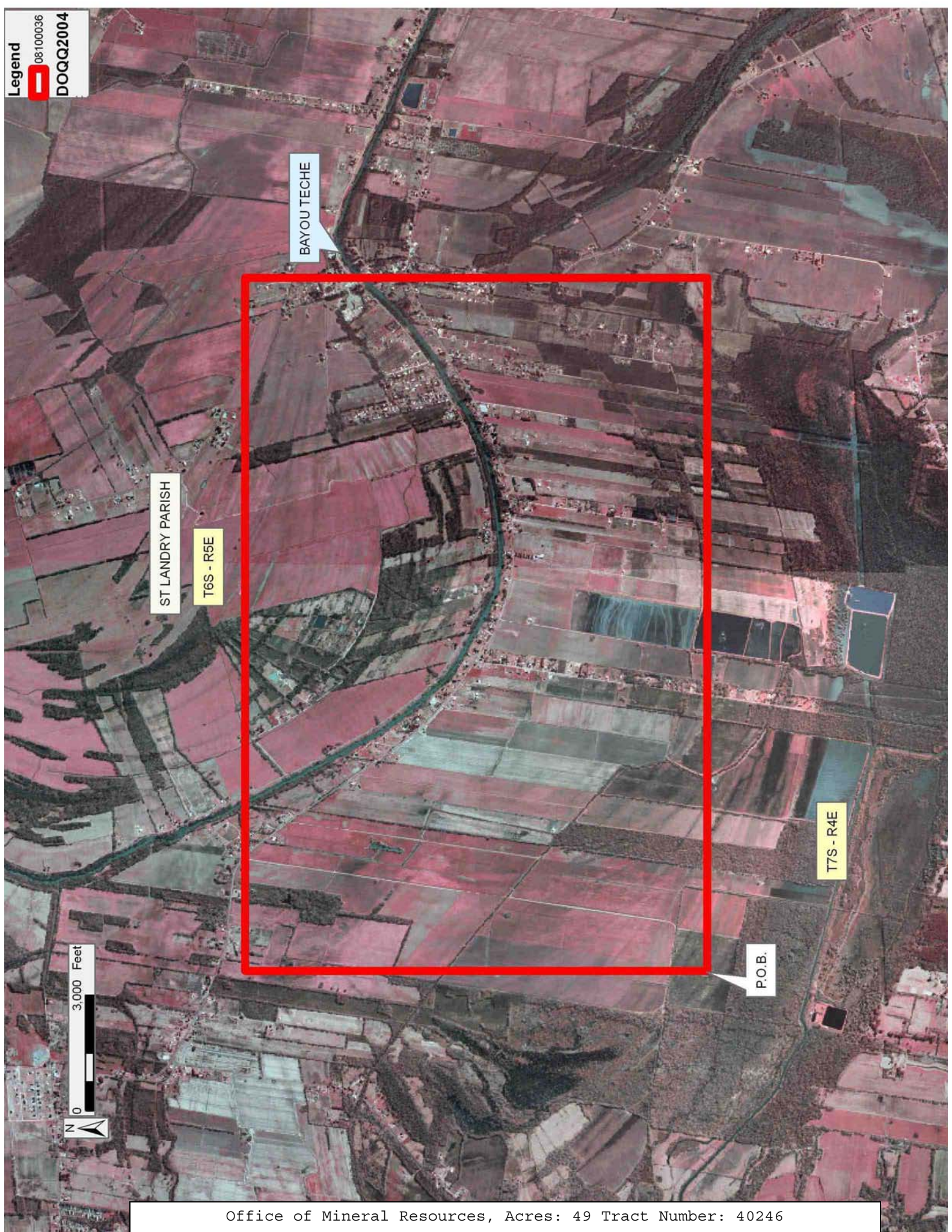
TRACT 40246 - St. Landry Parish, Louisiana

All of the lands now or formerly constituting the beds and bottoms of all water bodies of every nature and description as to which title is vested in the State of Louisiana, together with all islands arising therein and other lands formed by accretion or by reliction, where allowed by law, excepting tax adjudicated lands, and not presently under mineral lease on October 8, 2008, situated in St. Landry Parish, Louisiana, and more particularly described as follows: Beginning at a point having Coordinates of X = 1,778,363.30 and Y = 648,639.51; thence North 12,000.00 feet to a point having Coordinates of X = 1,778,363.30 and Y = 660,639.51; thence East 18,000.00 feet to a point having Coordinates of X = 1,796,363.30 and Y = 660,639.51; thence South 12,000.00 feet to a point having Coordinates of X = 1,796,363.30 and Y = 648,639.51; thence West 18,000.00 feet to the point of beginning, containing approximately **49.00 acres**, all as more particularly outlined on a plat on file in the Office of Mineral Resources, Department of Natural Resources. All bearings, distances and coordinates are based on Louisiana Coordinate System of 1927, (North or South Zone), where applicable.

NOTE: The above description of the Tract nominated for lease has been provided and corrected, where required, exclusively by the nomination party. Any mineral lease selected from this Tract and awarded by the Louisiana State Mineral Board shall be without warranty of any kind, either express, implied, or statutory, including, but not limited to, the implied warranties of merchantability and fitness for a particular purpose. Should the mineral lease awarded by the Louisiana State Mineral Board be subsequently modified, cancelled or abrogated due to the existence of conflicting leases, operating agreements, private claims or other future obligations or conditions which may affect all or any portion of the leased Tract, it shall not relieve the Lessee of the obligation to pay any bonus due thereon to the Louisiana State Mineral Board, nor shall the Louisiana State Mineral Board be obligated to refund any consideration paid by the Lessor prior to such modification, cancellation, or abrogation, including, but not limited to, bonuses, rentals and royalties.

Applicant: CYPRESS ENERGY CORPORATION

Bidder	Cash Payment	Price/Acre	Rental	Oil	Gas	Other



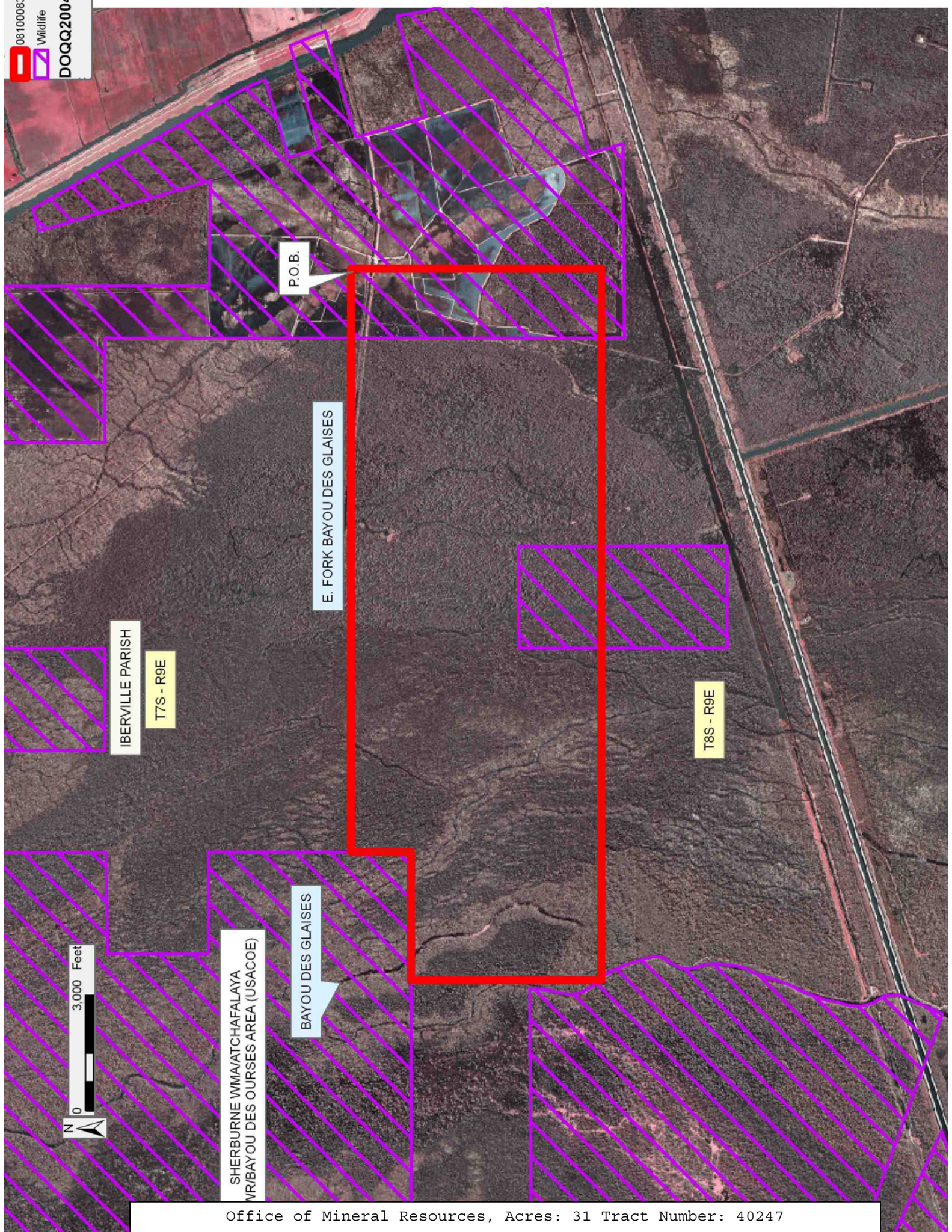
TRACT 40247 - Iberville Parish, Louisiana

All of the lands now or formerly constituting the beds and bottoms of all water bodies of every nature and description as to which title is vested in the State of Louisiana, together with all islands arising therein and other lands formed by accretion or by reliction, where allowed by law, excepting tax adjudicated lands, and not presently under mineral lease on October 8, 2008, situated in Iberville Parish, Louisiana, and more particularly described as follows: Beginning at a point having Coordinates of X = 1,933,896.00 and Y = 635,539.00; thence South 6,500.00 feet to a point having Coordinates of X = 1,933,896.00 and Y = 629,039.00; thence West 18,480.00 feet to a point having Coordinates of X = 1,915,416.00 and Y = 629,039.00; thence North approximately 4,939 feet to a point of intersection with the boundary of Sherburne Wildlife Management Area having a Coordinate of X = 1,915,416.00; thence along the boundary of said Sherburne Wildlife Management Area the following: Easterly approximately 3,333 feet and Northerly approximately 1,562 feet to a point of intersection with an East-West line having a Coordinate of Y = 635,539.00; thence East approximately 15,147 feet along said line to the point of beginning, (This tract includes only waterbottoms claimed and owned by the state and specifically excludes any land which the state or Wildlife and Fisheries may claim or own and to which the mineral rights are vested in them), containing approximately **31 acres**, all as more particularly outlined on a plat on file in the Office of Mineral Resources, Department of Natural Resources. All bearings, distances and coordinates are based on Louisiana Coordinate System of 1927, (North or South Zone), where applicable.

NOTE: The above description of the Tract nominated for lease has been provided and corrected, where required, exclusively by the nomination party. Any mineral lease selected from this Tract and awarded by the Louisiana State Mineral Board shall be without warranty of any kind, either express, implied, or statutory, including, but not limited to, the implied warranties of merchantability and fitness for a particular purpose. Should the mineral lease awarded by the Louisiana State Mineral Board be subsequently modified, cancelled or abrogated due to the existence of conflicting leases, operating agreements, private claims or other future obligations or conditions which may affect all or any portion of the leased Tract, it shall not relieve the Lessee of the obligation to pay any bonus due thereon to the Louisiana State Mineral Board, nor shall the Louisiana State Mineral Board be obligated to refund any consideration paid by the Lessor prior to such modification, cancellation, or abrogation, including, but not limited to, bonuses, rentals and royalties.

Applicant: ALBERT S. RUFFIN, JR.

Bidder	Cash Payment	Price/Acre	Rental	Oil	Gas	Other



IBERVILLE PARISH

T7S - R9E

E. FORK BAYOU DES GLAISES

T8S - R9E

BAYOU DES GLAISES

SHERBURNE WMA/ATCHAFALAYA
W/BAYOU DES OURSES AREA (USACOE)

P.O.B.



TRACT 40248 - Iberville Parish, Louisiana

All of the lands now or formerly constituting the beds and bottoms of all water bodies of every nature and description as to which title is vested in the State of Louisiana, together with all islands arising therein and other lands formed by accretion or by reliction, where allowed by law, excepting tax adjudicated lands, and not presently under mineral lease on October 8, 2008, situated in Iberville Parish, Louisiana, and more particularly described as follows: Beginning at a point having Coordinates of X = 1,933,896.00 and Y = 622,539.00; thence West 18,480.00 feet to a point having Coordinates of X = 1,915,416.00 and Y = 622,539.00; thence North 6,500.00 feet to a point having Coordinates of X = 1,915,416.00 and Y = 629,039.00; thence East 18,480.00 feet to a point having Coordinates of X = 1,933,896.00 and Y = 629,039.00; thence South 6,500.00 feet to the point of beginning, (This tract includes only waterbottoms claimed and owned by the state and specifically excludes any land which the state or Wildlife and Fisheries may claim or own and to which the mineral rights are vested in them), containing approximately **15 acres**, all as more particularly outlined on a plat on file in the Office of Mineral Resources, Department of Natural Resources. All bearings, distances and coordinates are based on Louisiana Coordinate System of 1927, (North or South Zone), where applicable.

NOTE: The above description of the Tract nominated for lease has been provided and corrected, where required, exclusively by the nomination party. Any mineral lease selected from this Tract and awarded by the Louisiana State Mineral Board shall be without warranty of any kind, either express, implied, or statutory, including, but not limited to, the implied warranties of merchantability and fitness for a particular purpose. Should the mineral lease awarded by the Louisiana State Mineral Board be subsequently modified, cancelled or abrogated due to the existence of conflicting leases, operating agreements, private claims or other future obligations or conditions which may affect all or any portion of the leased Tract, it shall not relieve the Lessee of the obligation to pay any bonus due thereon to the Louisiana State Mineral Board, nor shall the Louisiana State Mineral Board be obligated to refund any consideration paid by the Lessor prior to such modification, cancellation, or abrogation, including, but not limited to, bonuses, rentals and royalties.

Bidder	Cash Payment	Price/Acre	Rental	Oil	Gas	Other

Applicant: ALBERT S. RUFFIN, JR.

0810008;
Wildlife
DOQQ200

IBERVILLE PARISH

T7S - R9E

SHERBURNE WMA/ATCHAFALAYA NWR/BAYOU DES OURSES AREA (USACOE)

P.O.B.

BAYOU BROWN

BAYOU DES GLAISES

T8S - R8E

0
3,000 Feet
N

TRACT 40249 - Iberville Parish, Louisiana

All of the lands now or formerly constituting the beds and bottoms of all water bodies of every nature and description as to which title is vested in the State of Louisiana, together with all islands arising therein and other lands formed by accretion or by reliction, where allowed by law, excepting tax adjudicated lands, and not presently under mineral lease on October 8, 2008, situated in Iberville Parish, Louisiana, and more particularly described as follows: Beginning at a point having Coordinates of X = 1,933,896.00 and Y = 622,539.00; thence South 6,500.00 feet to a point having Coordinates of X = 1,933,896.00 and Y = 616,039.00; thence West 18,480.00 feet to a point having Coordinates of X = 1,915,416.00 and Y = 616,039.00; thence North 6,500.00 feet to a point having Coordinates of X = 1,915,416.00 and Y = 622,539.00; thence East 18,480.00 feet to the point of beginning, (This tract includes only waterbottoms claimed and owned by the state and specifically excludes any land which the state may claim or own and to which the mineral rights are vested in the state), above described tract containing approximately **7 acres**, all as more particularly outlined on a plat on file in the Office of Mineral Resources, Department of Natural Resources. All bearings, distances and coordinates are based on Louisiana Coordinate System of 1927, (North or South Zone), where applicable.

NOTE: The above description of the Tract nominated for lease has been provided and corrected, where required, exclusively by the nomination party. Any mineral lease selected from this Tract and awarded by the Louisiana State Mineral Board shall be without warranty of any kind, either express, implied, or statutory, including, but not limited to, the implied warranties of merchantability and fitness for a particular purpose. Should the mineral lease awarded by the Louisiana State Mineral Board be subsequently modified, cancelled or abrogated due to the existence of conflicting leases, operating agreements, private claims or other future obligations or conditions which may affect all or any portion of the leased Tract, it shall not relieve the Lessee of the obligation to pay any bonus due thereon to the Louisiana State Mineral Board, nor shall the Louisiana State Mineral Board be obligated to refund any consideration paid by the Lessor prior to such modification, cancellation, or abrogation, including, but not limited to, bonuses, rentals and royalties.

Bidder	Cash Payment	Price/Acre	Rental	Oil	Gas	Other

Applicant: ALBERT S. RUFFIN, JR.

