

TRACT 40221 - Portion of Blocks 3, and 4, East Cameron Area, Revised, Cameron Parish, Louisiana

The beds and bottoms of all water bodies belonging to the State of Louisiana located in Blocks 3, and 4, East Cameron Area, Revised, together with any present lands formed by accretion to the shoreline or islands formed therein, located in Cameron Parish, Louisiana, owned by and not presently under mineral lease as of October 8, 2008, from the State of Louisiana, the geographical area of which is more fully described as follows: Beginning on the Northwest corner of State Lease No. 17742 located in Block 4, East Cameron Area, Revised, having Coordinates of X = 1,499,000.00 and Y = 367,200.00; thence West 5966.67 feet to a point on the West boundary of said Block 4 East Cameron Area, Revised, also being the East boundary of Block 3, East Cameron Area, Revised, having Coordinates of X = 1,493,033.33 and Y = 367,200.00; thence West 1997.28 feet to a point having Coordinates of X = 1,491,036.10 and Y = 367,200.00; thence North 8,898.03 feet to a point having Coordinates of X = 1,491,036.10 and Y = 376,098.03; thence East approximately 974 feet to the most Western Northwest corner of the Rockefeller Wildlife Refuge and Game Preserve; thence Southerly, Southeasterly, Easterly, Southerly, and Southeasterly along the boundary of said Rockefeller Wildlife Refuge and Game Preserve, to a point on the East boundary of said Block 4 East Cameron Area, Revised, also being the West boundary of Block 5, East Cameron Area, Revised, to a point having a coordinate of X = 1,509,516.10; thence Southerly approximately 2,778 feet along the East boundary of said Block 4 East Cameron Area, Revised, feet to a point being the Northeast corner of State of Louisiana Tract 40068 having Coordinates of X = 1,509,516.10 and Y = 363,200.00; thence West 3,982.10 feet along said Tract 40068 to a point being the Southeast corner of said State Lease No. 17742, having Coordinates of X = 1,505,534.00 and Y = 363,200.00; thence North 4,000.00 feet along the East boundary of said State Lease No. 17742, to its Northeast corner, having Coordinates of X = 1,505,534.00 and Y = 367,200.00; thence West 6,534.00 feet along the North boundary of said State Lease No. 17742, to the point of beginning, **LESS AND EXCEPT** that portion, if any, of the above described tract which may lie within the boundary of said Rockefeller Wildlife Refuge, containing approximately **2,050 acres**, all as more particularly outlined on a plat on file in the Office of Mineral Resources, Department of Natural Resources. All bearings, distances and coordinates are based on Louisiana Coordinate System of 1927, (North or South Zone).

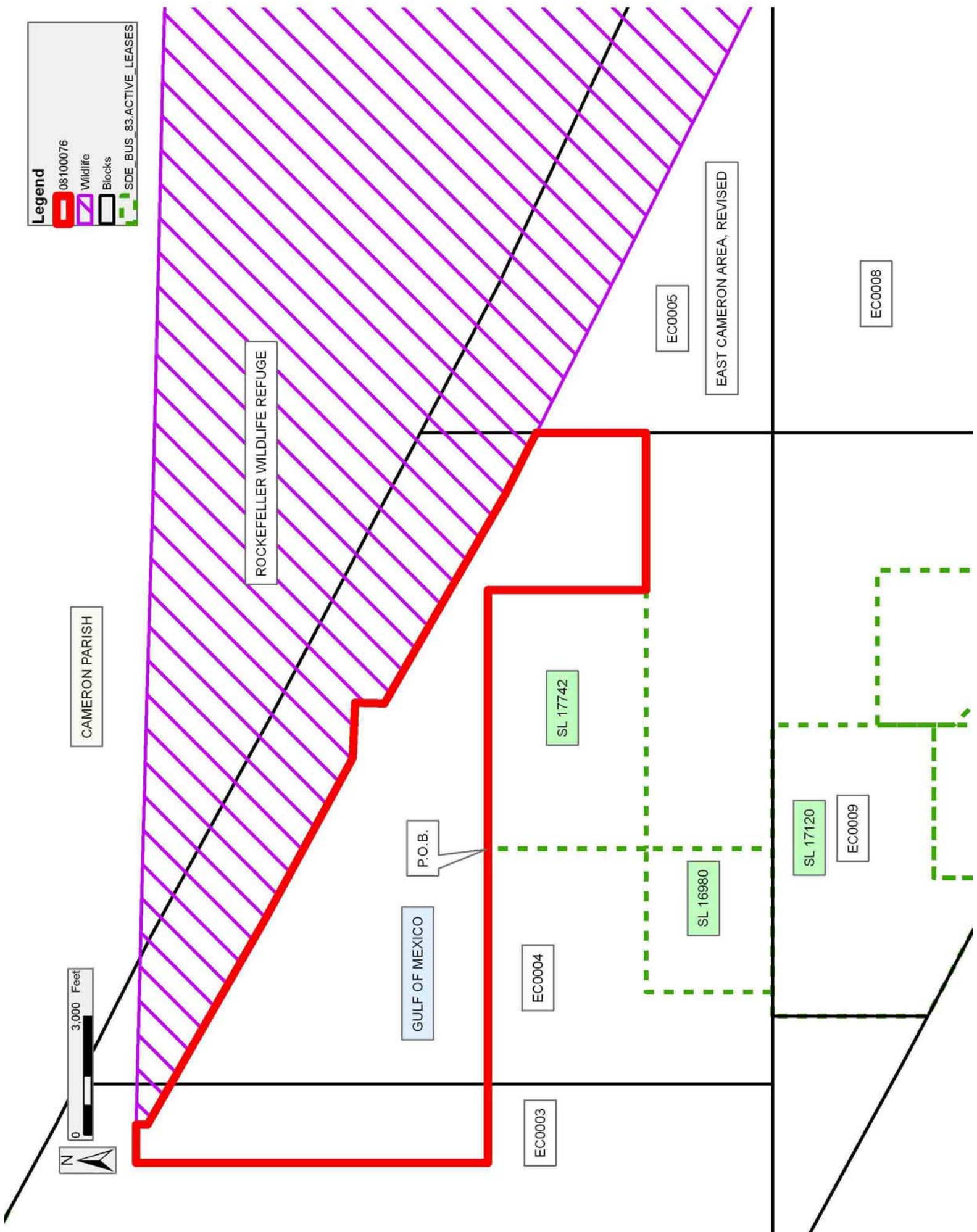
NOTE: The above description of the Tract nominated for lease has been provided and corrected, where required, exclusively by the nomination party. Any mineral lease selected from this Tract and awarded by the Louisiana State Mineral Board shall be without warranty of any kind, either express, implied, or statutory, including, but not limited to, the implied warranties of merchantability and fitness for a particular purpose. Should the mineral lease awarded by the Louisiana State Mineral Board be subsequently modified, cancelled or abrogated due to the existence of conflicting leases, operating agreements, private claims or other future obligations or conditions which may affect all or any portion

of the leased Tract, it shall not relieve the Lessee of the obligation to pay any bonus due thereon to the Louisiana State Mineral Board, nor shall the Louisiana State Mineral Board be obligated to refund any consideration paid by the Lessor prior to such modification, cancellation, or abrogation, including, but not limited to, bonuses, rentals and royalties.

NOTE: The State of Louisiana does hereby reserve, and this lease shall be subject to, the imprescriptible right of surface use in the nature of a servitude in favor of the Department of Natural Resources, including its Offices and Commissions, for the sole purpose of implementing, constructing, servicing and maintaining approved coastal zone management and/or restoration projects. Utilization of any and all rights derived under this lease by the mineral lessee, its agents, successors or assigns, shall not interfere with nor hinder the reasonable surface use by the Department of Natural Resources, its Offices or Commissions, as herein above reserved.

Applicant: RESOURCE EXPLORATION, L.L.C.

Bidder	Cash Payment	Price/ Acre	Rental	Oil	Gas	Other



TRACT 40222 - Portion of Blocks 10, 3, and 4, East Cameron Area, Revised, Cameron Parish, Louisiana

The beds and bottoms of all water bodies belonging to the State of Louisiana located in Blocks 10, 3, and 4, East Cameron Area, Revised, together with any present lands formed by accretion to the shoreline or islands formed therein, located in Cameron Parish, Louisiana, owned by and not presently under mineral lease as of October 8, 2008, from the State of Louisiana, the geographical area of which is more fully described as follows: Beginning at the Northwest corner of State Lease No. 17742 having Coordinates of X = 1,499,000.00 and Y = 367,200.00; thence South 4,000.00 feet along the Western boundary of said State Lease No. 17742 to its Southwest corner, said corner also being the Northeast corner of State Lease No. 16980 having Coordinates of X = 1,499,000.00 and Y = 363,200.00; thence West 3,633.00 feet along the Northern boundary of said State Lease No. 16980 to its Northwest corner having Coordinates of X = 1,495,367.00 and Y = 363,200.00; thence South 3,200.00 feet along the West boundary of said State Lease No. 16980, to its Southwest corner, also being a point on the south boundary of Block 4, East Cameron Area, Revised, said boundary also being the North boundary of Block 9, East Cameron Area, Revised, said boundary also being the North boundary of State Lease No. 17120, having Coordinates of X = 1,495,367.00 and Y = 360,000.00; thence West 608.95 feet along the said South boundary of Block 4, East Cameron Area, Revised, said boundary also being the North boundary of Block 9, East Cameron Area, Revised, said boundary also being and the said North boundary of said State Lease No. 17120 to its Northwest corner, said corner also being Northeast corner of Block 10, East Cameron Area, Revised, having Coordinates of X = 1,494,758.05 and Y = 360,000.00; thence South 3,929.22 feet along the West boundary of said State Lease No. 17120 to its Southwest corner, said boundary also being the East boundary of said Block 10, East Cameron Area, Revised, said corner also being a point on the Three Mile Line, as decreed by the Supreme Court of the United States, as determined by a Special Master appointed therein, in litigation styled *United States v. State of Louisiana et al No. 9 Original*, in 1975, having Coordinates of X = 1,494,758.05 and Y = 356,070.78; thence along the said three mile line the following courses: Northwesterly on a straight line to a point having Coordinates of X = 1,493,968 and Y = 356,487, Northwesterly on an arc having a radius of 18,241.52 feet and a center at X = 1,502,470 and Y = 372,625 to a point having Coordinates of X = 1,493,740 and Y = 356,609, Northwesterly on a straight line to a point having Coordinates of X = 1,488,240 and Y = 359,607, Northwesterly on a straight line to a point, said point being a point on the Northern boundary of Block 10, East Cameron Area, Revised, said boundary also being on the Southern boundary of Block 3, East Cameron Area, Revised having Coordinates of X = 1,487,457.39 and Y = 360,000.00, Northwesterly on a straight line to a point having Coordinates of X = 1,483,855.00 and Y = 361,809.00; thence North 5,391.00 feet to a point having Coordinates of X = 1,483,855.00 and Y = 367,200.00; thence East 15,145.00 to the point of beginning, containing approximately **2,489.60 acres, LESS AND EXCEPT** that portion thereof, if any, lying seaward of the line three nautical miles from the

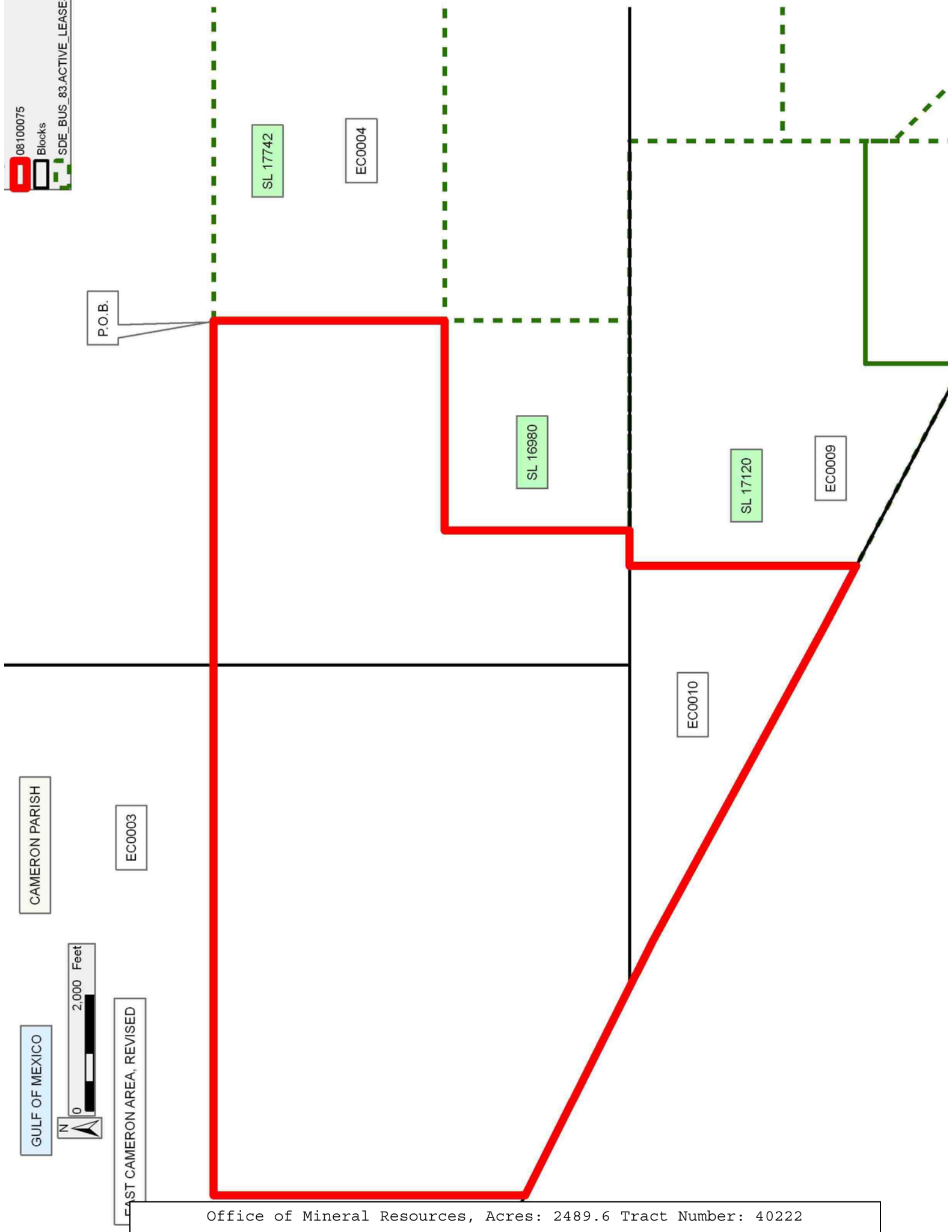
coast line of Louisiana, as said three mile line has been decreed by the Supreme Court of the United States, as determined by a Special Master appointed therein, in litigation styled **United States v. State of Louisiana et al No. 9 Original**, in 1975, all as more particularly outlined on a plat in the Office of Mineral Resources, Department of Natural Resources. All bearings, distances and coordinates are based on the Louisiana Coordinate System of 1927, (South Zone).

NOTE: The above description of the Tract nominated for lease has been provided and corrected, where required, exclusively by the nomination party. Any mineral lease selected from this Tract and awarded by the Louisiana State Mineral Board shall be without warranty of any kind, either express, implied, or statutory, including, but not limited to, the implied warranties of merchantability and fitness for a particular purpose. Should the mineral lease awarded by the Louisiana State Mineral Board be subsequently modified, cancelled or abrogated due to the existence of conflicting leases, operating agreements, private claims or other future obligations or conditions which may affect all or any portion of the leased Tract, it shall not relieve the Lessee of the obligation to pay any bonus due thereon to the Louisiana State Mineral Board, nor shall the Louisiana State Mineral Board be obligated to refund any consideration paid by the Lessor prior to such modification, cancellation, or abrogation, including, but not limited to, bonuses, rentals and royalties.

NOTE: The State of Louisiana does hereby reserve, and this lease shall be subject to, the imprescriptible right of surface use in the nature of a servitude in favor of the Department of Natural Resources, including its Offices and Commissions, for the sole purpose of implementing, constructing, servicing and maintaining approved coastal zone management and/or restoration projects. Utilization of any and all rights derived under this lease by the mineral lessee, its agents, successors or assigns, shall not interfere with nor hinder the reasonable surface use by the Department of Natural Resources, its Offices or Commissions, as herein above reserved.

Applicant: RESOURCE EXPLORATION, L.L.C.

Bidder	Cash Payment	Price/ Acre	Rental	Oil	Gas	Other



08100075

Blocks

SDE_BUS_83.ACTIVE_LEASE

CAMERON PARISH

GULF OF MEXICO

EAST CAMERON AREA, REVISED

Office of Mineral Resources, Acres: 2489.6 Tract Number: 40222

P.O.B.

SL 17742

EC0004

SL 16980

SL 17120

EC0009

EC0010

EC0003



TRACT 40223 - Portion of Blocks 6, and 7, East Cameron Area, Revised, Cameron Parish, Louisiana

The beds and bottoms of all water bodies belonging to the State of Louisiana located in Blocks 6, and 7, East Cameron Area, Revised, together with any present lands formed by accretion to the shoreline or islands formed therein, located in Cameron Parish, Louisiana, owned by and not presently under mineral lease as of October 8, 2008, from the State of Louisiana, the geographical area of which is more fully described as follows: Beginning at the Southeast corner of Block 6, East Cameron Area, Revised, said corner also being the Northeast corner of AO 0148 having Coordinates of X = 1,553,790.24 and Y = 345,241.95; thence West 5,000.00 feet along the South boundary of said Block 6, East Cameron Area, Revised, said boundary also being the North boundary of said AO0148 to its Northwest corner having Coordinates of X = 1,548,790.24 and Y = 345,241.95; thence West 9,758.05 feet along the said South boundary of Block 6, East Cameron Area, Revised, to its Southwest corner, said corner also being the Southeast corner of Block 7, East Cameron Area, Revised, having Coordinates of X = 1,539,032.19 and Y = 345,241.95; thence West 2,787.19 feet along the South boundary of said Block 7, East Cameron Area, Revised, to a point having Coordinates of X = 1,536,245.00 and Y = 345,241.95; thence North approximately 7,658 feet to a point on the Southern boundary of Rockefeller Wildlife Refuge and Game Preserve; thence Southeasterly along the said Southern boundary of Rockefeller Wildlife Refuge and Game Preserve to a point on the said East boundary of Block 7, East Cameron Area, Revised, said boundary also being the said West boundary of Block 6, East Cameron Area revised, having a Coordinate of X = 1,539,032.19; thence Southeasterly along the said Southern boundary of Rockefeller Wildlife Refuge and Game Preserve to a point on the said East boundary of Block 6, East Cameron Area, Revised, having a Coordinate of X = 1,553,790.24; thence South approximately 151 feet along the said East boundary of said Block 6, East Cameron Area, Revised, to the point of beginning, **LESS AND EXCEPT** that portion, if any, of the above described tract which may lie within the boundary of said Rockefeller Wildlife Refuge, containing approximately **1,551 acres**, all as more particularly outlined on a plat on file in the Office of Mineral Resources, Department of Natural Resources. All bearings, distances and coordinates are based on Louisiana Coordinate System of 1927, (North or South Zone).

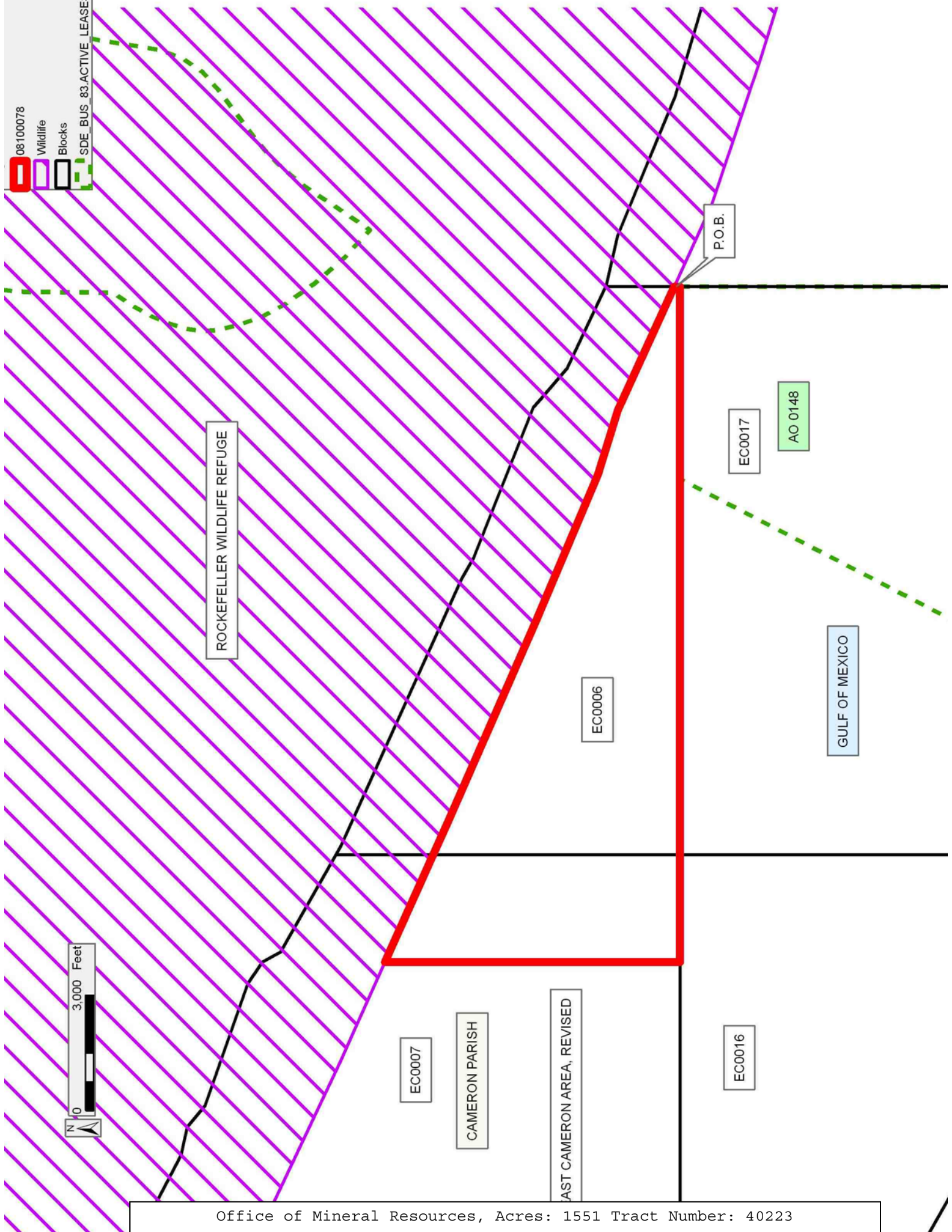
NOTE: The above description of the Tract nominated for lease has been provided and corrected, where required, exclusively by the nomination party. Any mineral lease selected from this Tract and awarded by the Louisiana State Mineral Board shall be without warranty of any kind, either express, implied, or statutory, including, but not limited to, the implied warranties of merchantability and fitness for a particular purpose. Should the mineral lease awarded by the Louisiana State Mineral Board be subsequently modified, cancelled or abrogated due to the existence of conflicting leases, operating agreements, private claims or other future obligations or conditions which may affect all or any portion of the leased Tract, it shall not relieve the Lessee of the obligation to

pay any bonus due thereon to the Louisiana State Mineral Board, nor shall the Louisiana State Mineral Board be obligated to refund any consideration paid by the Lessor prior to such modification, cancellation, or abrogation, including, but not limited to, bonuses, rentals and royalties.

NOTE: The State of Louisiana does hereby reserve, and this lease shall be subject to, the imprescriptible right of surface use in the nature of a servitude in favor of the Department of Natural Resources, including its Offices and Commissions, for the sole purpose of implementing, constructing, servicing and maintaining approved coastal zone management and/or restoration projects. Utilization of any and all rights derived under this lease by the mineral lessee, its agents, successors or assigns, shall not interfere with nor hinder the reasonable surface use by the Department of Natural Resources, its Offices or Commissions, as herein above reserved.

Applicant: RESOURCE EXPLORATION, L.L.C.

Bidder	Cash Payment	Price/ Acre	Rental	Oil	Gas	Other



08100078

Wildlife

Blocks

SDE BUS 83 ACTIVE LEASE

ROCKEFELLER WILDLIFE REFUGE

EC0006

EC0017

AO 0148

GULF OF MEXICO

EC0016

EC0007

CAMERON PARISH

EAST CAMERON AREA, REVISED

P.O.B.

TRACT 40224 - Portion of Blocks 16, and 7, East Cameron Area, Revised, Cameron Parish, Louisiana

The beds and bottoms of all water bodies belonging to the State of Louisiana located in Blocks 16, and 7, East Cameron Area, Revised, together with any present lands formed by accretion to the shoreline or islands formed therein, located in Cameron Parish, Louisiana, owned by and not presently under mineral lease as of October 8, 2008, from the State of Louisiana, the geographical area of which is more fully described as follows: Beginning at a point on the South line of Block 7, East Cameron Area, Revised, said point also being a point on the North line of Block 16, East Cameron Area, Revised, having Coordinates of X = 1,534,000.00 and Y = 345,241.95; thence South 8,837.48 feet to a point on the Three Mile Line, as decreed by the Supreme Court of the United States, as determined by a Special Master appointed therein, in litigation styled *United States v. State of Louisiana et al No. 9 Original*, in 1975, having Coordinates of X = 1,534,000.00 and Y = 336,404.47; thence along the said Three Mile Line the following: Northwesterly on a straight line to a point having Coordinates of X = 1,531,757 and Y = 337,418; Northwesterly along an arc to the right having a radius of 18,240.60 feet and a center at X = 1,539,270 and Y = 354,040 to a point having Coordinates of X = 1,530,263 and Y = 338,178; Northwesterly on a straight line to a point having Coordinates of X = 1,527,498 and Y = 339,748; Northwesterly along an arc to the right having a radius of 18,240.60 feet and a center at X = 1,536,505 and Y = 355,610 to a point having Coordinates of X = 1,526,511 and Y = 340,351; Northwesterly along an arc to the right having a radius of 18,240.60 feet and a center at X = 1,532,515 and Y = 357,575 to a point on the West line of said Block 16 having Coordinates of X = 1,524,274.14 and Y = 341,302.42; thence North 3,939.53 feet along the West line of said Block 16 to its Northwest corner, said corner also being the Southwest corner of said Block 7 having Coordinates of X = 1,524,274.14 and Y = 345,241.95; thence North 3,713.59 feet along the West line of said Block 7 to a point having Coordinates of X = 1,524,274.14 and Y = 348,955.54; thence East 11,970.86 feet to a point having Coordinates of X = 1,536,245.00 and Y = 348,955.54; thence South 3,713.59 feet to a point on the South line of said Block 7 having Coordinates of X = 1,536,245.00 and Y = 345,241.95; thence West 2,245.00 feet along the South line of said Block 7 to the point of beginning, containing approximately **2,449.92 acres, LESS AND EXCEPT** that portion thereof, if any, lying seaward of the line three nautical miles from the coast line of Louisiana, as said three mile line has been decreed by the Supreme Court of the United States, as determined by a Special Master appointed therein, in litigation styled **United States v. State of Louisiana et al No. 9 Original**, in 1975, all as more particularly outlined on a plat in the Office of Mineral Resources, Department of Natural Resources. All bearings, distances and coordinates are based on the Louisiana Coordinate System of 1927, (South Zone).

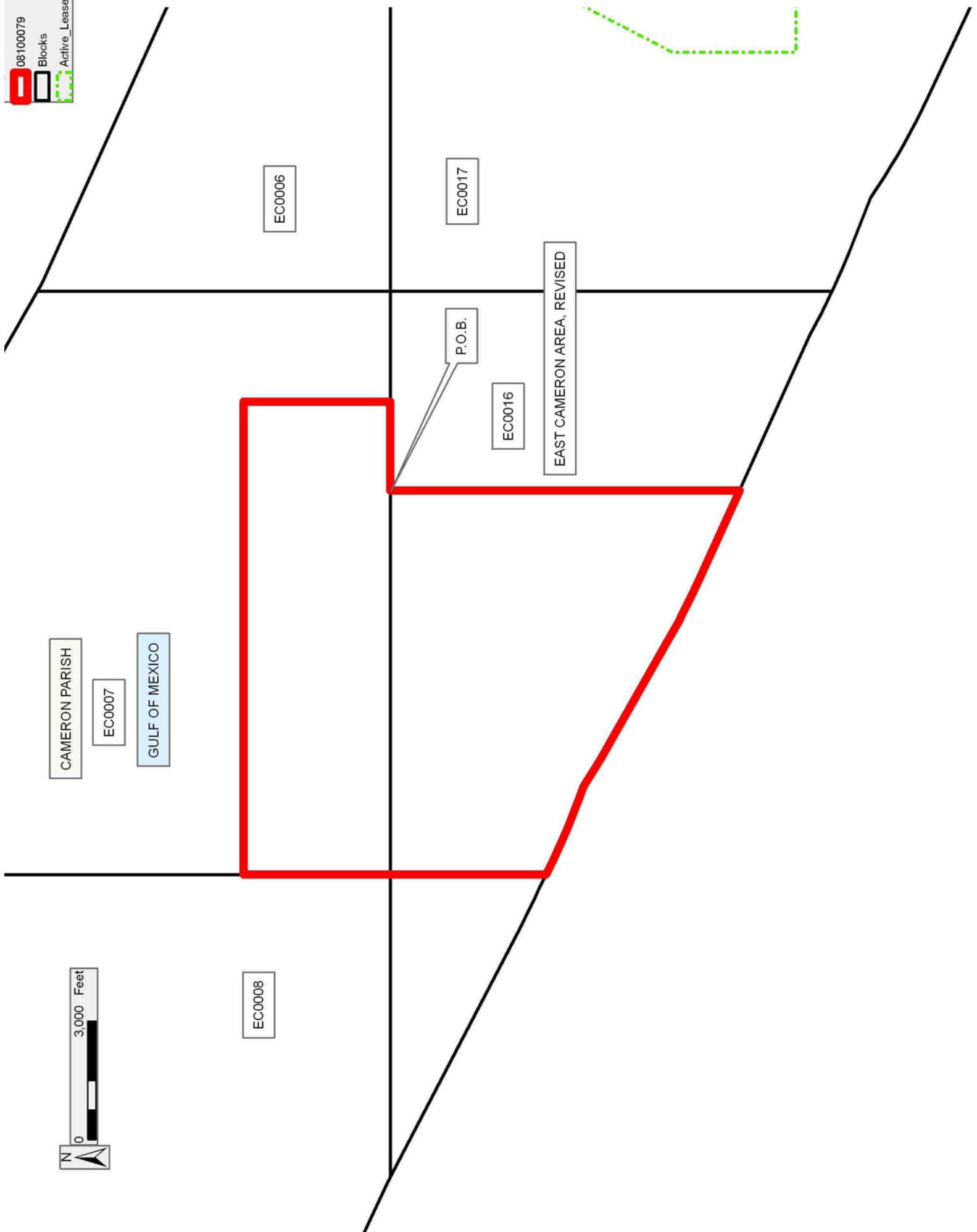
NOTE: The above description of the Tract nominated for lease has been provided and corrected, where required, exclusively by the nomination party. Any mineral lease selected from this Tract and awarded by the

Louisiana State Mineral Board shall be without warranty of any kind, either express, implied, or statutory, including, but not limited to, the implied warranties of merchantability and fitness for a particular purpose. Should the mineral lease awarded by the Louisiana State Mineral Board be subsequently modified, cancelled or abrogated due to the existence of conflicting leases, operating agreements, private claims or other future obligations or conditions which may affect all or any portion of the leased Tract, it shall not relieve the Lessee of the obligation to pay any bonus due thereon to the Louisiana State Mineral Board, nor shall the Louisiana State Mineral Board be obligated to refund any consideration paid by the Lessor prior to such modification, cancellation, or abrogation, including, but not limited to, bonuses, rentals and royalties.

NOTE: The State of Louisiana does hereby reserve, and this lease shall be subject to, the imprescriptible right of surface use in the nature of a servitude in favor of the Department of Natural Resources, including its Offices and Commissions, for the sole purpose of implementing, constructing, servicing and maintaining approved coastal zone management and/or restoration projects. Utilization of any and all rights derived under this lease by the mineral lessee, its agents, successors or assigns, shall not interfere with nor hinder the reasonable surface use by the Department of Natural Resources, its Offices or Commissions, as herein above reserved.

Applicant: RESOURCE EXPLORATION, L.L.C.

Bidder	Cash Payment	Price/ Acre	Rental	Oil	Gas	Other



08100079
Blocks
Active_Lease

EC0006

EC0017

EAST CAMERON AREA, REVISED

P.O.B.

EC0016

CAMERON PARISH

EC0007

GULF OF MEXICO

EC0008



TRACT 40225 - Portion of Blocks 16, and 17, East Cameron Area, Revised, Cameron Parish, Louisiana

The beds and bottoms of all water bodies belonging to the State of Louisiana located in Blocks 16, and 17, East Cameron Area, Revised, together with any present lands formed by accretion to the shoreline or islands formed therein, located in Cameron Parish, Louisiana, owned by and not presently under mineral lease as of October 8, 2008, from the State of Louisiana, the geographical area of which is more fully described as follows: Beginning at a point on the North boundary of Block 16, East Cameron Area, Revised, having Coordinates of X = 1,534,000.00 and Y = 345,241.95; thence East 5,032.19 feet along the said North boundary of Block 16, East Cameron Area, Revised, to its Northeast corner, said corner also being the Northwest corner of Block 17, East Cameron Area, Revised, having Coordinates of X = 1,539,032.19 and Y = 345,241.95; thence East 9,758.05 feet along the North boundary of said Block 17, East Cameron Area, Revised, to a Northwest corner of AO 0148 having Coordinates of X = 1,548,790.24 and Y = 345,241.95; thence South 27 degrees 23 minutes 07 seconds West 8,061.47 feet along the Western boundary of said AO 0148 to a corner having Coordinates of X = 1,545,082.19 and Y = 338,083.90; thence West 6,050.00 feet to a point on the West boundary of said Block 17, East Cameron Area, Revised, said boundary also being the East boundary of said Block 16, East Cameron Area, Revised having Coordinates of X = 1,539,032.19 and Y = 338,083.90; thence West 5,032.19 feet to a point having Coordinates of X = 1,534,000.00 and Y = 338,083.90; thence North 7,158.05 feet to the point of beginning, containing approximately **2,125.759 acres**, all as more particularly outlined on a plat on file in the Office of Mineral Resources, Department of Natural Resources. All bearings, distances and coordinates are based on Louisiana Coordinate System of 1927, (North or South Zone).

NOTE: The above description of the Tract nominated for lease has been provided and corrected, where required, exclusively by the nomination party. Any mineral lease selected from this Tract and awarded by the Louisiana State Mineral Board shall be without warranty of any kind, either express, implied, or statutory, including, but not limited to, the implied warranties of merchantability and fitness for a particular purpose. Should the mineral lease awarded by the Louisiana State Mineral Board be subsequently modified, cancelled or abrogated due to the existence of conflicting leases, operating agreements, private claims or other future obligations or conditions which may affect all or any portion of the leased Tract, it shall not relieve the Lessee of the obligation to pay any bonus due thereon to the Louisiana State Mineral Board, nor shall the Louisiana State Mineral Board be obligated to refund any consideration paid by the Lessor prior to such modification, cancellation, or abrogation, including, but not limited to, bonuses, rentals and royalties.

NOTE: The State of Louisiana does hereby reserve, and this lease shall be subject to, the imprescriptible right of surface use in the nature of a servitude in favor of the Department of Natural Resources, including its

Offices and Commissions, for the sole purpose of implementing, constructing, servicing and maintaining approved coastal zone management and/or restoration projects. Utilization of any and all rights derived under this lease by the mineral lessee, its agents, successors or assigns, shall not interfere with nor hinder the reasonable surface use by the Department of Natural Resources, its Offices or Commissions, as herein above reserved.

Applicant: RESOURCE EXPLORATION, L.L.C.

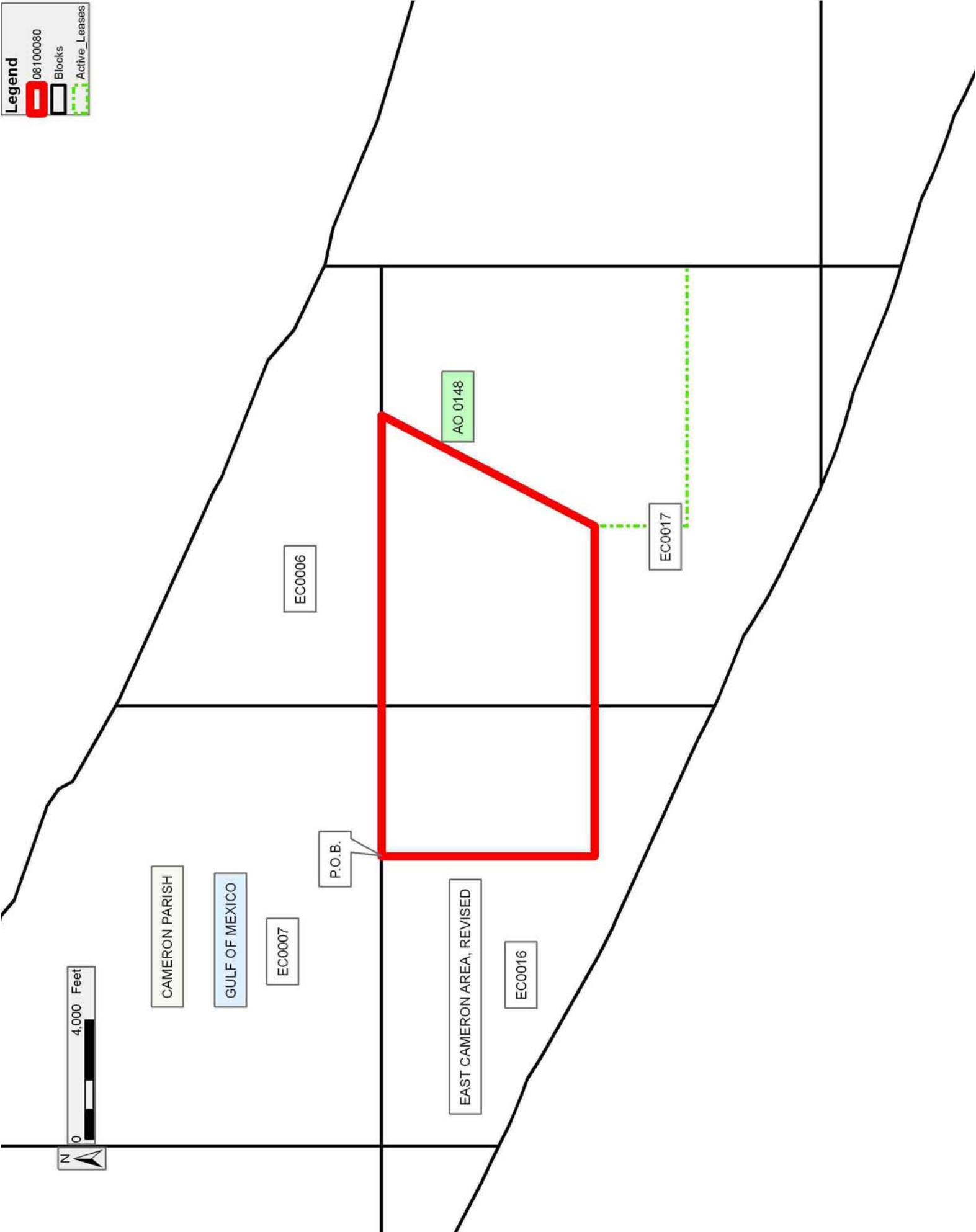
Bidder	Cash Payment	Price/ Acre	Rental	Oil	Gas	Other

Legend

08100080

Blocks

Active_Leases



TRACT 40226 - Portion of Blocks 16, and 17, East Cameron Area, Revised, Cameron Parish, Louisiana

The beds and bottoms of all water bodies belonging to the State of Louisiana located in Blocks 16, and 17, East Cameron Area, Revised, together with any present lands formed by accretion to the shoreline or islands formed therein, located in Cameron Parish, Louisiana, owned by and not presently under mineral lease as of October 8, 2008, from the State of Louisiana, the geographical area of which is more fully described as follows: Beginning at the Southeast corner of Block 17, East Cameron Area, Revised, having Coordinates of X = 1,553,790.24 and Y = 330,483.90; thence West 7,363.79 feet along the South boundary of said Block 17, East Cameron Area, Revised, to a point on the Three Mile Line, as decreed by the Supreme Court of the United States, as determined by a Special Master appointed therein, in litigation styled *United States v. State of Louisiana et al No. 9 Original*, in 1975, having Coordinates of X = 1,546,426.45 and Y = 330,483.90; thence along the said Three Mile Line the following courses: Northwesterly on an arc having a radius of 18,240.60 feet and a center at X = 1,553,840 and Y = 347,150 to a point having Coordinates of X = 1,546,081 and Y = 330,642; Northwesterly on a straight line to a point having Coordinates of X = 1,543,911 and Y = 331,662; Northwesterly on an arc having a radius of 18,240.60 feet and a center at X = 1,551,670 and Y = 348,170 to a point having Coordinates of X = 1,541,402 and Y = 333,094; Northwesterly on a straight line to a point having Coordinates of X = 1,540,011 and Y = 333,646; Northwesterly on an arc having a radius of 18,240.60 feet and a center at X = 1,546,740 and Y = 350,600 to a point on the West boundary of said Block 17, East Cameron Area, Revised, also being the East boundary of Block 16, East Cameron Area, Revised, having Coordinates of X = 1,539,032.19 and Y = 334,067.93; Northwesterly on an arc having a radius of 18,240.60 feet and a center at X = 1,546,740 and Y = 350,600 to a point having Coordinates of X = 1,537,927 and Y = 334,630; Northwesterly on a straight line to a point having Coordinates of X = 1,534,000.00 and Y = 336,404.47; thence North 1,679.43 feet to a point having Coordinates of X = 1,534,000.00 and Y = 338,083.90; thence East 5,032.19 feet to a point on the said East boundary of Block 16, East Cameron Area, Revised, said boundary also being the said West boundary of Block 17, East Cameron Area, Revised, having Coordinates of X = 1,539,032.19 and Y = 338,083.90; thence East 6,050.00 feet to a point on the West boundary of AO 0148, having Coordinates of X = 1,545,082.19 and Y = 338,083.90; thence South 3,100.00 feet along the West boundary of said AO 0148, to its Southwest corner having Coordinates of X = 1,545,082.19 and Y = 334,983.90; thence East 2,636.67 feet along the South boundary of said AO 0148, to the Northwest corner of AO0200, having Coordinates of X = 1,547,718.86 and Y = 334,983.90; thence South 02 degrees 57 minutes 01 seconds East 721.21 feet along the West boundary of said AO 0200, to its Northernmost Southwest corner having Coordinates of X = 1,547,755.98 and Y = 334,263.64; thence South 54 degrees 05 minutes 24 seconds East 253.88 feet along the said West boundary of said AO 0200, to its Southernmost Southwest corner, having Coordinates of X = 1,547,961.60 and Y = 334,114.74; thence East 3,100.00 feet along the South boundary of

said AO 0200, to its Southeast corner, having Coordinates of X = 1,551,061.60 and Y = 334,114.74; thence North 53 degrees 18 minutes 39 seconds East 1,454.73 feet along the East boundary of said State Lease AO 0200, to its Northeast corner, said corner also being a point on the South boundary of said AO 0148, having Coordinates of X = 1,552,228.13 and Y = 334,983.90; thence East 1,562.11 feet along the boundary of said State Lease AO 0148, to its Southeast corner, said corner also being a point on the East boundary of said Block 17, East Cameron Area, Revised, having Coordinates of X = 1,553,790.24 and Y = 334,983.90; thence South 4,500.00 feet along the South boundary of said Block 17, East Cameron Area, Revised, to the point of beginning, containing approximately **1,895.65 acres, LESS AND EXCEPT** that portion thereof, if any, lying seaward of the line three nautical miles from the coast line of Louisiana, as said three mile line has been decreed by the Supreme Court of the United States, as determined by a Special Master appointed therein, in litigation styled **United States v. State of Louisiana et al No. 9 Original**, in 1975, all as more particularly outlined on a plat in the Office of Mineral Resources, Department of Natural Resources. All bearings, distances and coordinates are based on the Louisiana Coordinate System of 1927, (South Zone).

NOTE: The above description of the Tract nominated for lease has been provided and corrected, where required, exclusively by the nomination party. Any mineral lease selected from this Tract and awarded by the Louisiana State Mineral Board shall be without warranty of any kind, either express, implied, or statutory, including, but not limited to, the implied warranties of merchantability and fitness for a particular purpose. Should the mineral lease awarded by the Louisiana State Mineral Board be subsequently modified, cancelled or abrogated due to the existence of conflicting leases, operating agreements, private claims or other future obligations or conditions which may affect all or any portion of the leased Tract, it shall not relieve the Lessee of the obligation to pay any bonus due thereon to the Louisiana State Mineral Board, nor shall the Louisiana State Mineral Board be obligated to refund any consideration paid by the Lessor prior to such modification, cancellation, or abrogation, including, but not limited to, bonuses, rentals and royalties.

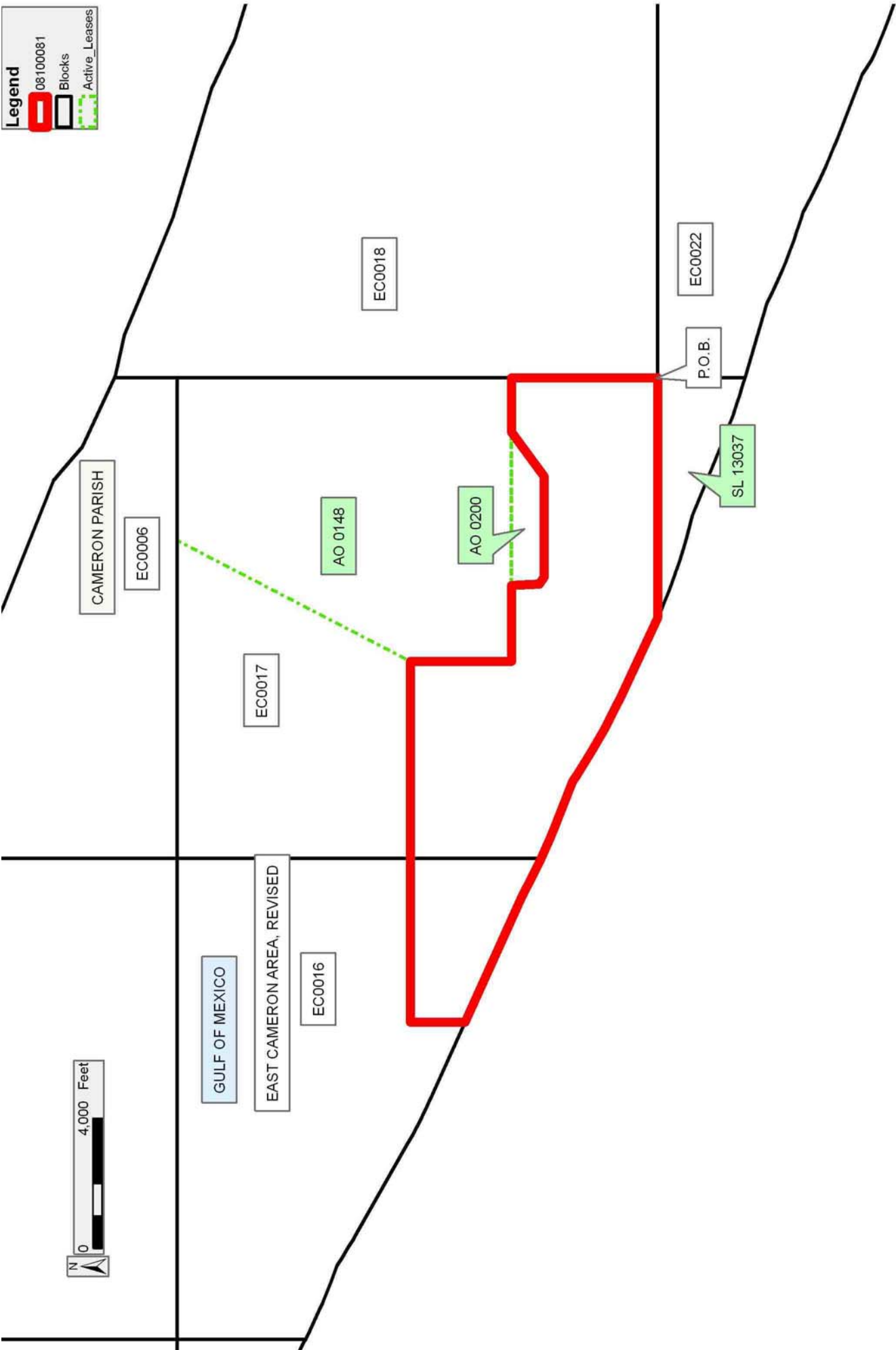
NOTE: The State of Louisiana does hereby reserve, and this lease shall be subject to, the imprescriptible right of surface use in the nature of a servitude in favor of the Department of Natural Resources, including its Offices and Commissions, for the sole purpose of implementing, constructing, servicing and maintaining approved coastal zone management and/or restoration projects. Utilization of any and all rights derived under this lease by the mineral lessee, its agents, successors or assigns, shall not interfere with nor hinder the reasonable surface use by the Department of Natural Resources, its Offices or Commissions, as herein above reserved.

Applicant: RESOURCE EXPLORATION, L.L.C.

Bidder	Cash Payment	Price/ Acre	Rental	Oil	Gas	Other

Legend

- 08100081
- Blocks
- Active_Leases



TRACT 40227 - Portion of Block 52, Breton Sound Area, Plaquemines Parish, Louisiana

The beds and bottoms of all water bodies belonging to the State of Louisiana located in Block 52, Breton Sound Area, together with any present lands formed by accretion to the shoreline or islands formed therein, located in Plaquemines Parish, Louisiana, owned by and not presently under mineral lease as of October 8, 2008, from the State of Louisiana, the geographical area of which is more fully described as follows: Beginning at a point within Block 52, Breton Sound Area, being the Northeast corner of State Lease No. 17860, also being a point on the Southern boundary of State Lease No. 12806 as amended, having Coordinates of X = 2,692,443.73 and Y = 289,580.18; thence North 60 degrees 17 minutes 03 seconds East 869.04 feet along the Southern boundary of said State Lease No. 12806 to the Westernmost corner of State Lease No. 16737 as amended, having Coordinates of X = 2,693,198.49 and Y = 290,010.96; thence along the boundary of said State Lease No. 16737 the following courses: South 58 degrees 34 minutes 46 seconds East 553.87 feet and North 29 degrees 33 minutes 36 seconds East 1,204.23 feet to its Northernmost point also being a point on the Southern boundary of said State Lease No. 12806 having Coordinates of X = 2,694,265.23 and Y = 290,769.71; thence North 54 degrees 34 minutes 44 seconds East 104.02 feet along the Southern boundary of said State Lease No. 12806 to a point on the East line of said Block 52 having Coordinates of X = 2,694,350.00 and Y = 290,830.00; thence South 12,750.00 feet along the East line of said Block 52 to its Southeast corner having Coordinates of X = 2,694,350.00 and Y = 278,080.00; thence West 2,500.00 feet along the South line of said Block 52 to the Southeast corner of said State Lease No. 17860 having Coordinates of X = 2,691,850.00 and Y = 278,080.00; thence along the boundary of said State Lease No. 17860 the following courses: North 06 degrees 54 minutes 40 seconds East 8,310.39 feet and North 07 degrees 07 minutes 30 seconds West 3,275.47 feet to the point of beginning, containing approximately **524.16 acres**, all as more particularly outlined on a plat on file in the Office of Mineral Resources, Department of Natural Resources. All bearings, distances and coordinates are based on Louisiana Coordinate System of 1927, (North or South Zone).

NOTE: The above description of the Tract nominated for lease has been provided and corrected, where required, exclusively by the nomination party. Any mineral lease selected from this Tract and awarded by the Louisiana State Mineral Board shall be without warranty of any kind, either express, implied, or statutory, including, but not limited to, the implied warranties of merchantability and fitness for a particular purpose. Should the mineral lease awarded by the Louisiana State Mineral Board be subsequently modified, cancelled or abrogated due to the existence of conflicting leases, operating agreements, private claims or other future obligations or conditions which may affect all or any portion of the leased Tract, it shall not relieve the Lessee of the obligation to pay any bonus due thereon to the Louisiana State Mineral Board, nor shall the Louisiana State Mineral Board be obligated to refund any consideration

paid by the Lessor prior to such modification, cancellation, or abrogation, including, but not limited to, bonuses, rentals and royalties.

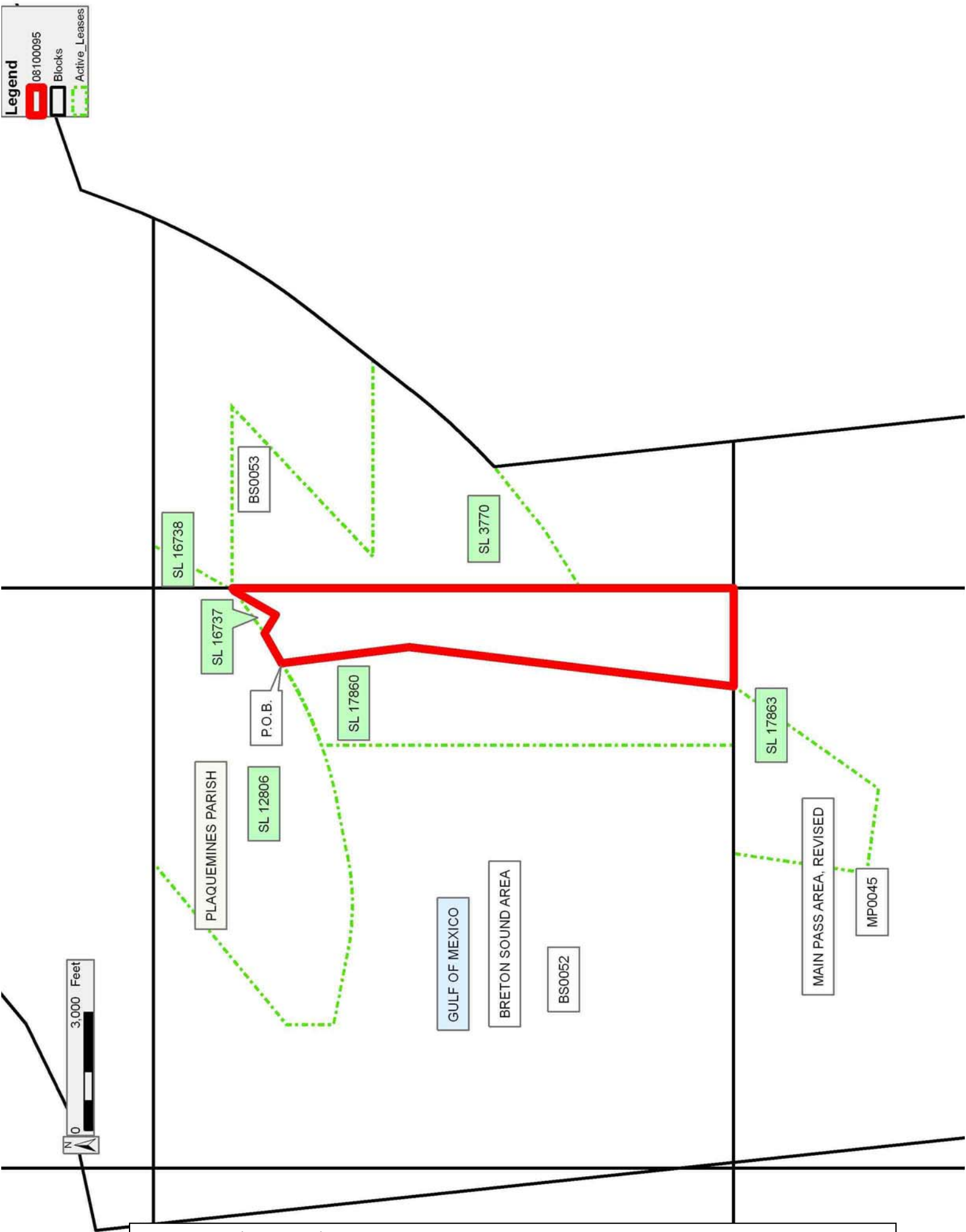
NOTE: The State of Louisiana does hereby reserve, and this lease shall be subject to, the imprescriptible right of surface use in the nature of a servitude in favor of the Department of Natural Resources, including its Offices and Commissions, for the sole purpose of implementing, constructing, servicing and maintaining approved coastal zone management and/or restoration projects. Utilization of any and all rights derived under this lease by the mineral lessee, its agents, successors or assigns, shall not interfere with nor hinder the reasonable surface use by the Department of Natural Resources, its Offices or Commissions, as herein above reserved.

Applicant: HAROLD J. ANDERSON, INC.

Bidder	Cash Payment	Price/ Acre	Rental	Oil	Gas	Other

Legend

- 08100095
- Blocks
- Active_Leases



TRACT 40228 - Portion of Block 45, Main Pass Area, Revised, Plaquemines Parish, Louisiana

The beds and bottoms of all water bodies belonging to the State of Louisiana located in Block 45, Main Pass Area, Revised, together with any present lands formed by accretion to the shoreline or islands formed therein, located in Plaquemines Parish, Louisiana, owned by and not presently under mineral lease as of October 8, 2008, from the State of Louisiana, the geographical area of which is more fully described as follows: Beginning at the Northeast corner of State Lease No. 17863, also being a point on the North line of Block 45, Main Pass Area, Revised, having Coordinates of X = 2,691,850.00 and Y = 278,080.00; thence East 2,500.00 feet along the North line of said Block 45 to its Northeast corner having Coordinates of X = 2,694,350.00 and Y = 278,080.00; thence South 14,750.00 feet along the East line of said Block 45 to its Southeast corner having Coordinates of X = 2,694,350.00 and Y = 263,330.00; thence West 7,375.00 feet along the South line of said Block 45 to a point having Coordinates of X = 2,686,975.00 and Y = 263,330.00; thence North 9,990.00 feet to a point on the Southern boundary of State Lease No. 18550 having Coordinates of X = 2,686,975.00 and Y = 273,320.00; thence along the boundary of said State Lease No. 18550 the following courses: East 1,075.00 feet and North 1,247.44 feet to a point on the Southern boundary of said State Lease No. 17863 having Coordinates of X = 2,688,050.00 and Y = 274,567.44; thence along the boundary of said State Lease No. 17863 the following courses: South 82 degrees 03 minutes 24 seconds East 1,211.63 feet and North 35 degrees 14 minutes 31 seconds East 4,505.82 feet to the point of beginning, containing approximately **2,170.91 acres**, all as more particularly outlined on a plat on file in the Office of Mineral Resources, Department of Natural Resources. All bearings, distances and coordinates are based on Louisiana Coordinate System of 1927, (North or South Zone).

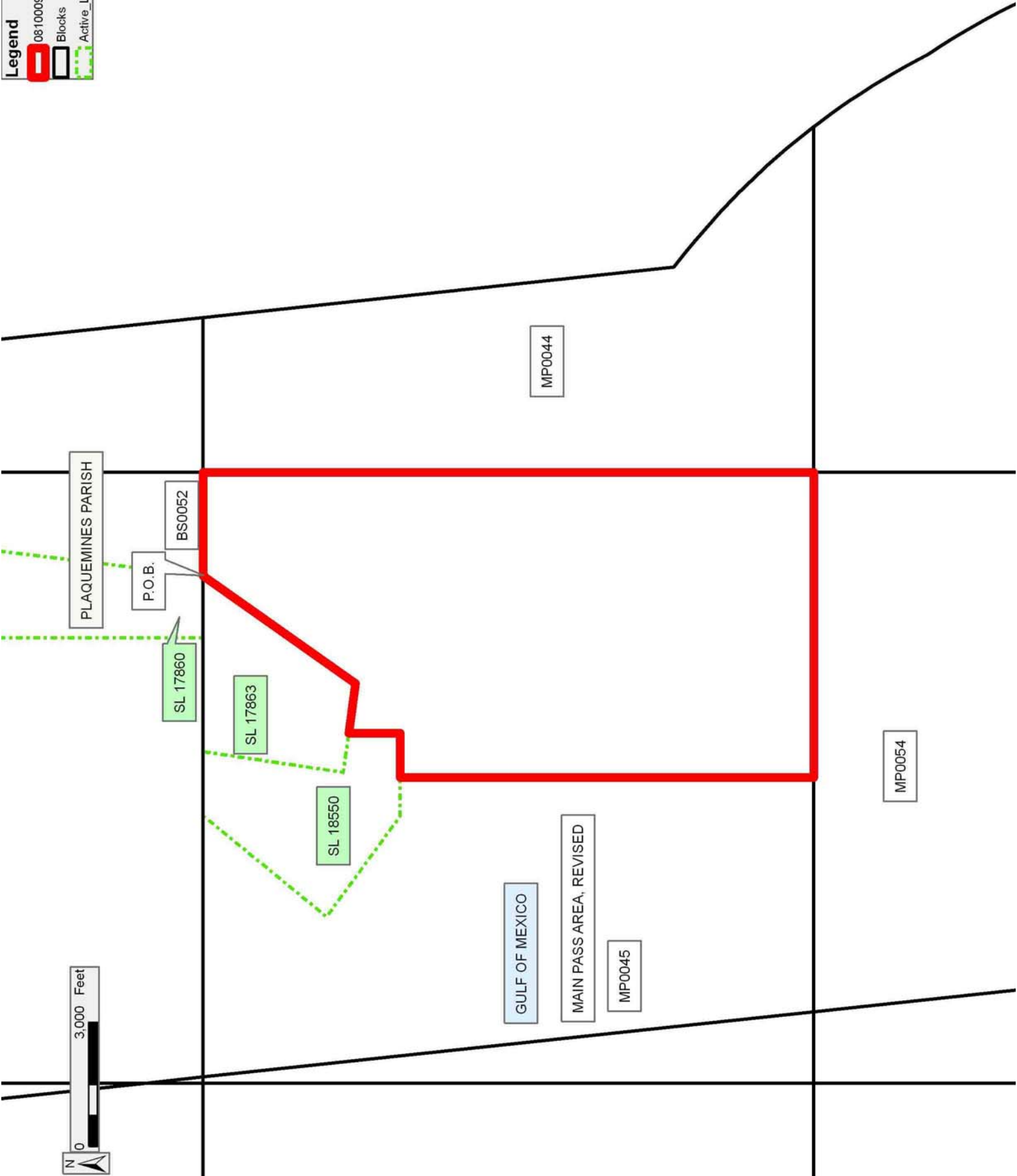
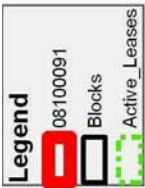
NOTE: The above description of the Tract nominated for lease has been provided and corrected, where required, exclusively by the nomination party. Any mineral lease selected from this Tract and awarded by the Louisiana State Mineral Board shall be without warranty of any kind, either express, implied, or statutory, including, but not limited to, the implied warranties of merchantability and fitness for a particular purpose. Should the mineral lease awarded by the Louisiana State Mineral Board be subsequently modified, cancelled or abrogated due to the existence of conflicting leases, operating agreements, private claims or other future obligations or conditions which may affect all or any portion of the leased Tract, it shall not relieve the Lessee of the obligation to pay any bonus due thereon to the Louisiana State Mineral Board, nor shall the Louisiana State Mineral Board be obligated to refund any consideration paid by the Lessor prior to such modification, cancellation, or abrogation, including, but not limited to, bonuses, rentals and royalties.

NOTE: The State of Louisiana does hereby reserve, and this lease shall be subject to, the imprescriptible right of surface use in the nature of a

servitude in favor of the Department of Natural Resources, including its Offices and Commissions, for the sole purpose of implementing, constructing, servicing and maintaining approved coastal zone management and/or restoration projects. Utilization of any and all rights derived under this lease by the mineral lessee, its agents, successors or assigns, shall not interfere with nor hinder the reasonable surface use by the Department of Natural Resources, its Offices or Commissions, as herein above reserved.

Applicant: HAROLD J. ANDERSON, INC.

Bidder	Cash Payment	Price/ Acre	Rental	Oil	Gas	Other



TRACT 40229 - Portion of Block 45, Main Pass Area, Revised, Plaquemines Parish, Louisiana

The beds and bottoms of all water bodies belonging to the State of Louisiana located in Block 45, Main Pass Area, Revised, together with any present lands formed by accretion to the shoreline or islands formed therein, located in Plaquemines Parish, Louisiana, owned by and not presently under mineral lease as of October 8, 2008, from the State of Louisiana, the geographical area of which is more fully described as follows: Beginning at the Northeast corner of State Lease No. 17053, as amended, also being a point on the North line of Block 45, Main Pass Area, Revised, having Coordinates of X = 2,680,780.00 and Y = 278,080.00; thence East 5,269.00 feet along the North line of said Block 45 to the Northwest corner of State Lease No. 18550 having Coordinates of X = 2,686,049.00 and Y = 278,080.00; thence along the boundary of said State Lease No. 18550 the following courses: South 39 degrees 19 minutes 30 seconds West 3,847.13 feet; South 53 degrees 48 minutes 59 seconds East 3,021.82 feet and East 925.00 feet to a point on its Southern boundary having Coordinates of X = 2,686,975.00 and Y = 273,320.00; thence South 9,990.00 feet to a point on the South line of said Block 45 having Coordinates of X = 2,686,975.00 and Y = 263,330.00; thence West 5,655.82 feet to a point on the Louisiana Coastline, as decreed by the Supreme Court of the United States, as determined by a Special Master appointed therein, in litigation styled *United States v. State of Louisiana et al No. 9 Original*, in 1975, having Coordinates of X = 2,681,319.18 and Y = 263,330.00; thence Northwesterly on a straight line along said Louisiana Coastline to a point on the Southern boundary of said State Lease No. 17053 having Coordinates of X = 2,679,993.53 and Y = 275,734.00; thence along the boundary of said State Lease No. 17053 the following courses: East 786.47 feet and North 2,346.00 feet to the point of beginning, containing approximately **1,898.55 acres**, all as more particularly outlined on a plat on file in the Office of Mineral Resources, Department of Natural Resources. All bearings, distances and coordinates are based on Louisiana Coordinate System of 1927, (North or South Zone).

NOTE: The above description of the Tract nominated for lease has been provided and corrected, where required, exclusively by the nomination party. Any mineral lease selected from this Tract and awarded by the Louisiana State Mineral Board shall be without warranty of any kind, either express, implied, or statutory, including, but not limited to, the implied warranties of merchantability and fitness for a particular purpose. Should the mineral lease awarded by the Louisiana State Mineral Board be subsequently modified, cancelled or abrogated due to the existence of conflicting leases, operating agreements, private claims or other future obligations or conditions which may affect all or any portion of the leased Tract, it shall not relieve the Lessee of the obligation to pay any bonus due thereon to the Louisiana State Mineral Board, nor shall the Louisiana State Mineral Board be obligated to refund any consideration paid by the Lessor prior to such modification, cancellation, or abrogation, including, but not limited to, bonuses, rentals and royalties.

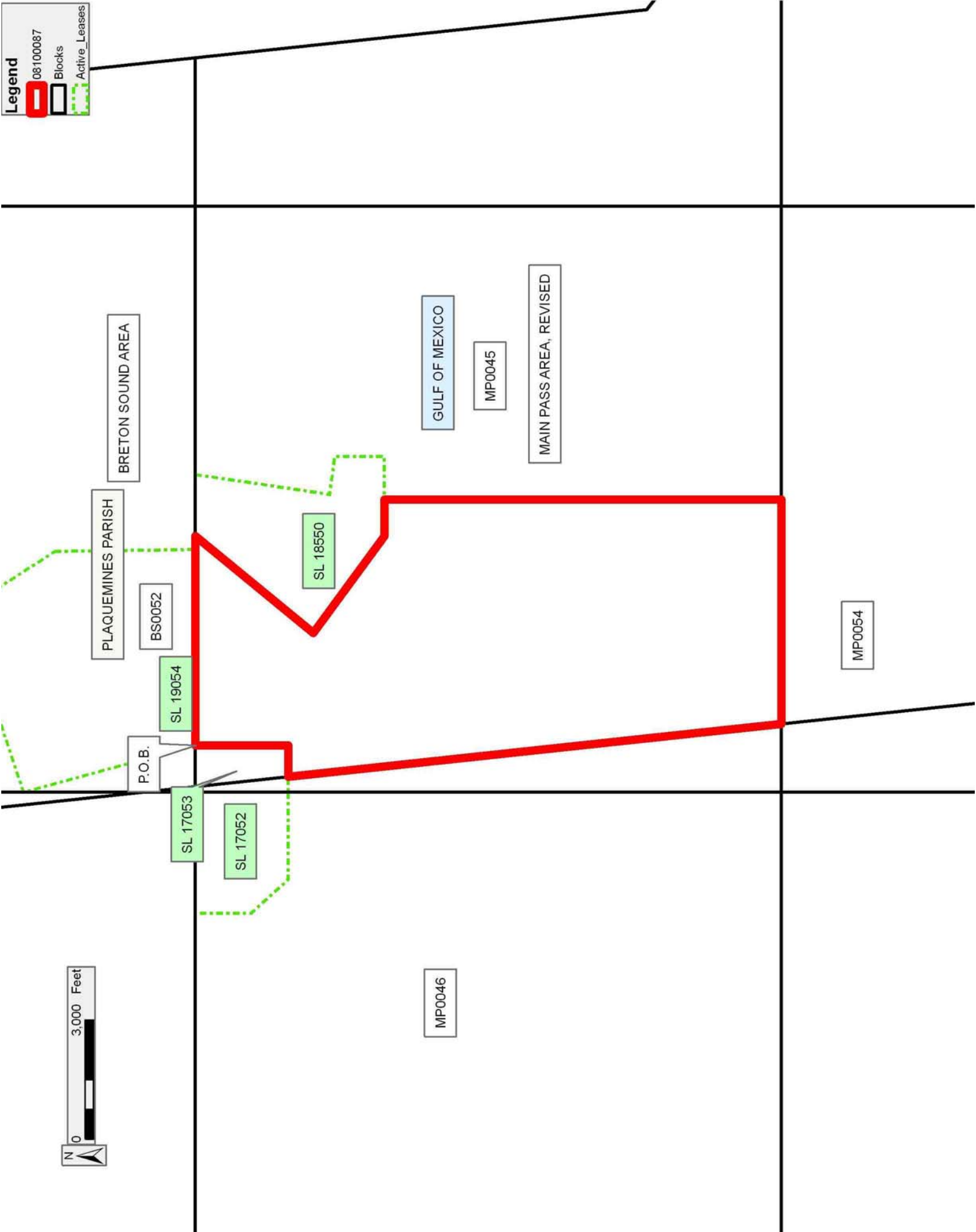
NOTE: The State of Louisiana does hereby reserve, and this lease shall be subject to, the imprescriptible right of surface use in the nature of a servitude in favor of the Department of Natural Resources, including its Offices and Commissions, for the sole purpose of implementing, constructing, servicing and maintaining approved coastal zone management and/or restoration projects. Utilization of any and all rights derived under this lease by the mineral lessee, its agents, successors or assigns, shall not interfere with nor hinder the reasonable surface use by the Department of Natural Resources, its Offices or Commissions, as herein above reserved.

Applicant: HAROLD J. ANDERSON, INC.

Bidder	Cash Payment	Price/ Acre	Rental	Oil	Gas	Other

Legend

- 08100087
- Blocks
- Active_Leases



TRACT 40230 - Portion of Block 13, Eugene Island Area, Revised, St. Mary Parish, Louisiana

The beds and bottoms of all water bodies belonging to the State of Louisiana located in Block 13, Eugene Island Area, Revised, together with any present lands formed by accretion to the shoreline or islands formed therein, located in St. Mary Parish, Louisiana, owned by and not presently under mineral lease as of October 8, 2008, from the State of Louisiana, the geographical area of which is more fully described as follows: Beginning at the Southwest corner of Block 13, Eugene Island Area, Revised, having Coordinates of X = 1,937,341.00 and Y = 255,394.00; thence North approximately 6,117 feet along the West line of said Block 13 to a point of intersection with the South boundary of the Atchafalaya Delta Wildlife Management Area having a Coordinate of X = 1,937,341.00; thence Southeasterly on a straight line along said boundary to a point of intersection with the East line of said Block 13 having a Coordinate of X = 1,949,699.10; thence South approximately 736 feet along the East line of said Block 13 to the Easternmost Northeast corner of State Lease No. 1665, as amended having Coordinates of X = 1,949,699.10 and Y = 256,460.00; thence along the boundary of said State Lease No. 1665 the following courses: South 17 degrees 34 minutes 11 seconds West 227.23 feet, South 62 degrees 10 minutes 50 seconds West 565.80 feet, South 62 degrees 16 minutes 31 seconds West 169.20 feet, North 47 degrees 02 minutes 43 seconds West 312.30 feet, North 48 degrees 14 minutes 23 seconds West 375.37 feet, South 61 degrees 41 minutes 57 seconds West 1,289.86 feet, North 21 degrees 53 minutes 42 seconds East 41.70 feet, North 18 degrees 20 minutes 57 seconds East 209.08 feet, North 16 degrees 41 minutes 45 seconds East 249.85 feet, North 12 degrees 40 minutes 03 seconds East 236.08 feet, North 03 degrees 13 minutes 16 seconds East 174.23 feet, North 02 degrees 03 minutes 05 seconds West 174.04 feet, North 08 degrees 45 minutes 22 seconds West 212.24 feet, North 12 degrees 03 minutes 24 seconds West 207.34 feet, North 15 degrees 55 minutes 38 seconds West 126.41 feet, North 30 degrees 08 minutes 59 seconds West 112.87 feet, North 31 degrees 34 minutes 34 seconds West 185.86 feet, North 39 degrees 05 minutes 19 seconds West 155.85 feet, North 43 degrees 35 minutes 31 seconds West 138.13 feet, North 48 degrees 16 minutes 57 seconds West 164.49 feet, North 57 degrees 08 minutes 26 seconds West 187.88 feet, North 66 degrees 04 minutes 49 seconds West 134.79 feet, North 71 degrees 40 minutes 25 seconds West 103.40 feet, North 71 degrees 39 minutes 50 seconds West 73.33 feet, North 80 degrees 37 minutes 35 seconds West 145.63 feet, North 85 degrees 34 minutes 09 seconds West 424.31 feet, South 86 degrees 45 minutes 49 seconds West 263.22 feet, South 82 degrees 55 minutes 26 seconds West 286.47 feet, South 77 degrees 02 minutes 29 seconds West 201.30 feet, South 73 degrees 37 minutes 50 seconds West 335.88 feet, South 73 degrees 18 minutes 52 seconds West 313.95 feet, South 69 degrees 33 minutes 48 seconds West 339.60 feet, South 66 degrees 28 minutes 28 seconds West 656.43 feet, South 65 degrees 41 minutes 04 seconds West 562.17 feet, South 65 degrees 26 minutes 36 seconds West 520.89 feet, South 66 degrees 32 minutes 29 seconds West 472.31 feet, South 66 degrees 04 minutes 00 seconds West 171.22 feet, South 85 degrees

51 minutes 52 seconds West 271.92 feet, South 85 degrees 51 minutes 55 seconds West 416.08 feet, South 84 degrees 05 minutes 38 seconds West 291.55 feet, South 82 degrees 19 minutes 16 seconds West 449.03 feet, South 80 degrees 32 minutes 16 seconds West 456.21 feet, South 78 degrees 10 minutes 43 seconds West 219.66 feet, South 76 degrees 30 minutes 15 seconds West 257.10 feet, South 75 degrees 25 minutes 33 seconds West 258.31 feet, South 69 degrees 18 minutes 16 seconds West 240.52 feet, South 67 degrees 22 minutes 49 seconds West 260.00 feet, South 64 degrees 30 minutes 57 seconds West 592.66 feet, South 60 degrees 15 minutes 18 seconds West 201.56 feet, South 50 degrees 42 minutes 38 seconds West 142.13 feet, South 46 degrees 38 minutes 12 seconds West 123.79 feet, South 36 degrees 52 minutes 12 seconds West 100.00 feet, South 30 degrees 27 minutes 56 seconds West 98.62 feet, South 27 degrees 53 minutes 50 seconds West 96.18 feet, and South 16 degrees 12 minutes 33 seconds West 89.56 feet to its Southwest corner and a point on the South line of said Block 13 having Coordinates of X = 1,937,945.00 and Y = 255,394.00; thence West 604.00 feet along the South line of said Block 13 to the point of beginning, containing approximately **698 acres**, all as more particularly outlined on a plat on file in the Office of Mineral Resources, Department of Natural Resources. All bearings, distances and coordinates are based on Louisiana Coordinate System of 1927, (North or South Zone).

NOTE: The above description of the Tract nominated for lease has been provided and corrected, where required, exclusively by the nomination party. Any mineral lease selected from this Tract and awarded by the Louisiana State Mineral Board shall be without warranty of any kind, either express, implied, or statutory, including, but not limited to, the implied warranties of merchantability and fitness for a particular purpose. Should the mineral lease awarded by the Louisiana State Mineral Board be subsequently modified, cancelled or abrogated due to the existence of conflicting leases, operating agreements, private claims or other future obligations or conditions which may affect all or any portion of the leased Tract, it shall not relieve the Lessee of the obligation to pay any bonus due thereon to the Louisiana State Mineral Board, nor shall the Louisiana State Mineral Board be obligated to refund any consideration paid by the Lessor prior to such modification, cancellation, or abrogation, including, but not limited to, bonuses, rentals and royalties.

NOTE: The above described tract may be in the vicinity of existing shell reefs where drilling and dredging operations must be conducted in strict conformity with the regulations adopted by the Louisiana Department of Wildlife and Fisheries and/or the U.S. Corps of Engineers, U.S. Army.

NOTE: The State of Louisiana does hereby reserve, and this lease shall be subject to, the imprescriptible right of surface use in the nature of a servitude in favor of the Department of Natural Resources, including its Offices and Commissions, for the sole purpose of implementing, constructing, servicing and maintaining approved coastal zone management and/or restoration projects. Utilization of any and all rights derived

under this lease by the mineral lessee, its agents, successors or assigns, shall not interfere with nor hinder the reasonable surface use by the Department of Natural Resources, its Offices or Commissions, as herein above reserved.

NOTE: The Department of Wildlife and Fisheries has designated certain areas in the coastal waters of the State of Louisiana as Oyster Seed Bed Areas. The exact location of those Seed Bed Areas must be obtained from the Department of Wildlife and Fisheries and any work done under a mineral lease from the State of Louisiana may necessarily be conducted in conformity with the rules and regulations promulgated by the said Department of Wildlife and Fisheries for Oyster Seed Bed Areas.

Applicant: TRINITY ENERGY SERVICES, LLC

Bidder	Cash Payment	Price/ Acre	Rental	Oil	Gas	Other

Legend

- 08100123
- Wildlife
- Blocks
- Active_Leases

DOQQ2004

