

TRACT 39419 - Plaquemines Parish, Louisiana

All of the lands now or formerly constituting the beds and bottoms of all water bodies of every nature and description as to which title is vested in the State of Louisiana, together with all islands arising therein and other lands formed by accretion or by reliction, where allowed by law, excepting tax adjudicated lands, and not presently under mineral lease on October 10, 2007, situated in Plaquemines Parish, Louisiana, and more particularly described as follows: All of the lands now or formerly constituting the beds and bottoms of all water bodies of every nature and description the title of which vests in the State of Louisiana, together with all islands arising therein and other lands formed by accretion or by reliction, where allowed by law, excepting tax and adjudicated lands, and not presently under mineral lease on October 10, 2007, situated in Plaquemines Parish, LA, and more particularly described as follows: Beginning at a point having Coordinates of X = 2,507,590.00 and Y = 338,248.00; thence South 2640.00 feet to a point having Coordinates of X = 2,507,590.00 and Y = 335,608.00; thence West 2640.00 feet to a point having Coordinates of X = 2,504,950.00 and Y = 335,608.00; thence North 2640.00 feet to a point having Coordinates of X = 2,504,950.00 and Y = 338,248.00; thence East 2640.00 feet to the Point of Beginning and containing approximately **62 acres**, all as more particularly outlined on a plat on file in the Office of Mineral Resources, Department of Natural Resources. All bearings, distances and coordinates are based on Louisiana Coordinate System of 1927, (North or South Zone), where applicable.

NOTE: The above description of the Tract nominated for lease has been provided and corrected, where required, exclusively by the nomination party. Any mineral lease selected from this Tract and awarded by the Louisiana State Mineral Board shall be without warranty of any kind, either express, implied, or statutory, including, but not limited to, the implied warranties of merchantability and fitness for a particular purpose. Should the mineral lease awarded by the Louisiana State Mineral Board be subsequently modified, cancelled or abrogated due to the existence of conflicting leases, operating agreements, private claims or other future obligations or conditions which may affect all or any portion of the leased Tract, it shall not relieve the Lessee of the obligation to pay any bonus due thereon to the Louisiana State Mineral Board, nor shall the Louisiana State Mineral Board be obligated to refund any consideration paid by the Lessor prior to such modification, cancellation, or abrogation, including, but not limited to, bonuses, rentals and royalties.

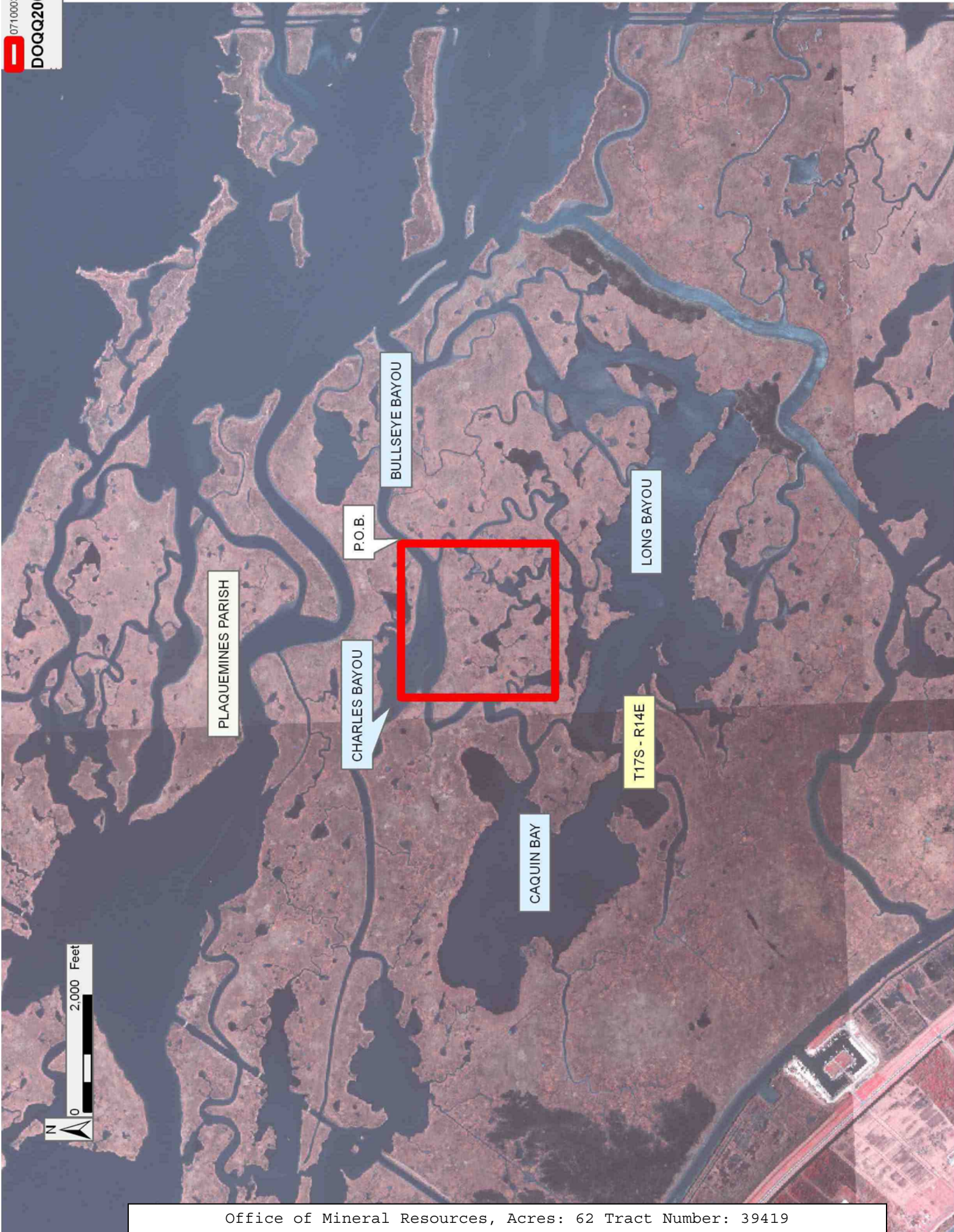
NOTE: The State of Louisiana does hereby reserve, and this lease shall be subject to, the imprescriptible right of surface use in the nature of a servitude in favor of the Department of Natural Resources, including its Offices and Commissions, for the sole purpose of implementing, constructing, servicing and maintaining approved coastal zone management and/or restoration projects. Utilization of any and all rights derived under this lease by the mineral lessee, its agents, successors or assigns, shall not interfere with nor hinder the reasonable surface use by the

Department of Natural Resources, its Offices or Commissions, as herein above reserved.

NOTE: The Department of Wildlife and Fisheries has designated certain areas in the coastal waters of the State of Louisiana as Oyster Seed Bed Areas. The exact location of those Seed Bed Areas must be obtained from the Department of Wildlife and Fisheries and any work done under a mineral lease from the State of Louisiana may necessarily be conducted in conformity with the rules and regulations promulgated by the said Department of Wildlife and Fisheries for Oyster Seed Bed Areas.

Applicant: MCGINTY-DURHAM, INC.

Bidder	Cash Payment	Price/Acre	Rental	Oil	Gas	Other



TRACT 39420 - Portion of Blocks 290, and 291, South Marsh Island Area, Iberia and Vermilion Parishes, Louisiana

All of the lands now or formerly constituting the beds and bottoms of all water bodies of every nature and description as to which title is vested in the State of Louisiana, together with all islands arising therein and other lands formed by accretion or by reliction, where allowed by law, excepting tax adjudicated lands, and not presently under mineral lease on October 10, 2007, situated in Iberia and Vermilion Parishes, Louisiana, and more particularly described as follows: Beginning at a point on the Louisiana Coastline, as decreed by the Supreme Court of the United States, as determined by a Special Master appointed therein, in litigation styled *United States v. State of Louisiana et al No. 9 Original*, in 1975, having Coordinates of X = 1,770,962.99 and Y = 329,157.81; thence along the boundary of said Coastline the following courses: North 60 degrees 35 minutes 13 seconds West 8,923.17 feet to a point having Coordinates of X = 1,763,190 and Y = 333,540 and North 86 degrees 17 minutes 05 seconds West 318.67 feet to a point having Coordinates of X = 1,762,872.00 and Y = 333,560.65; thence North 35 degrees 00 minutes 00 seconds East 338.38 feet to a point having Coordinates of X = 1,763,066.09 and Y = 333,837.83; thence North 86 degrees 20 minutes 25 seconds East 8,452.12 feet to a point having Coordinates of X = 1,771,500.98 and Y = 334,377.35; thence South 55 degrees 00 minutes 00 seconds East 8,914.22 feet to a point said to be on the boundary of Marsh Island Wildlife Refuge having Coordinates of X = 1,778,803.09 and Y = 329,264.36; thence Southerly along the meanders of said Marsh Island Refuge to a point having coordinates of X = 1,778,822.96 and Y = 329,157.81; thence West 7,859.98 feet to the point of beginning, **LESS AND EXCEPT** that portion, if any, of the Marsh Island Wildlife Refuge that may lie within the above described tract, containing approximately **1002.09 acres**, all as more particularly outlined on a plat on file in the Office of Mineral Resources, Department of Natural Resources. All bearings, distances and coordinates are based on Louisiana Coordinate System of 1927, (North or South Zone), where applicable.

NOTE: The above description of the Tract nominated for lease has been provided and corrected, where required, exclusively by the nomination party. Any mineral lease selected from this Tract and awarded by the Louisiana State Mineral Board shall be without warranty of any kind, either express, implied, or statutory, including, but not limited to, the implied warranties of merchantability and fitness for a particular purpose. Should the mineral lease awarded by the Louisiana State Mineral Board be subsequently modified, cancelled or abrogated due to the existence of conflicting leases, operating agreements, private claims or other future obligations or conditions which may affect all or any portion of the leased Tract, it shall not relieve the Lessee of the obligation to pay any bonus due thereon to the Louisiana State Mineral Board, nor shall the Louisiana State Mineral Board be obligated to refund any consideration paid by the Lessor prior to such modification, cancellation, or abrogation, including, but not limited to, bonuses, rentals and royalties.

NOTE: The acreage contained herein, being a portion of State Lease 335, 340 or 341, was subject to the litigation between Texas, Inc. and the State of Louisiana which resulted in the Global Settlement Agreement compromise whereby this acreage was reassigned through various mesne conveyances to the successors of William T. Burton, the original lessee of said leases from the State, (hereinafter otherwise referred to as the "ORRO's) and approved by the State Mineral Board, becoming effective April 25, 1994. Under separate agreement by and between the State and the ORRO's, certain obligations were to be met within a specified time frame or the ORRO's became obligated to release the reassigned acreage back to the State. The obligations were not met within the specified time frame and the State began securing the releases for the acreage contained herein. Due to the extremely large number of ORRO's, their nationwide and worldwide dispersal, the unreliability of available contact information and/or a present inability to obtain full, requisite cooperation, the State has, as yet, not secured releases from certain ORRO's representing approximately a .0258336 interest in this acreage. Accordingly, although the State is diligently pursuing the requisite releases affecting this acreage (the furnishing of which the ORRO's representing the stated decimal interest are obligated), nevertheless, a party obtaining a mineral lease from the State of Louisiana on the acreage contained herein shall do so with full knowledge that a complete release of all specific ORRO interest in this acreage has not as yet been secured and shall assume a business risk commensurate with the unsecured interest release.

NOTE: The Office of Mineral Resources will require a minimum bonus of \$300 per acre and a minimum royalty of 25%.

NOTE: The State of Louisiana does hereby reserve, and this lease shall be subject to, the imprescriptible right of surface use in the nature of a servitude in favor of the Department of Natural Resources, including its Offices and Commissions, for the sole purpose of implementing, constructing, servicing and maintaining approved coastal zone management and/or restoration projects. Utilization of any and all rights derived under this lease by the mineral lessee, its agents, successors or assigns, shall not interfere with nor hinder the reasonable surface use by the Department of Natural Resources, its Offices or Commissions, as herein above reserved.

NOTE: It appears, according to our records, that a portion of this Tract is located within the restrictive safety fairway area as set out by the Corps of Engineers, U.S. Army and/or the restrictive anchorage area as set out by the U.S. Coast Guard.

NOTE: The Department of Wildlife and Fisheries has designated certain areas in the coastal waters of the State of Louisiana as Oyster Seed Bed Areas. The exact location of those Seed Bed Areas must be obtained from the Department of Wildlife and Fisheries and any work done under a mineral lease from the State of Louisiana may necessarily be conducted in





conformity with the rules and regulations promulgated by the said Department of Wildlife and Fisheries for Oyster Seed Bed Areas.

NOTE: All or a portion of this Tract lies within one nautical mile of the boundary of the Russell Sage or Marsh Island Wildlife Refuge and Game Preserve. Any activities connected with this lease conducted within this Tract which may pose potential environmental impacts to the said Wildlife Refuge and Game Preserve should be coordinated with the Louisiana Department of Wildlife and Fisheries.

Applicant: CYPRESS ENERGY CORPORATION

Bidder	Cash Payment	Price/Acre	Rental	Oil	Gas	Other

Legend

-  07100023
-  Wildlife
-  Blocks
-  Counties



VERMILION BAY

VERMILION PARISH

IBERIA PARISH

MARSH ISLAND WILDLIFE REFUGE

P.O.B.

GULF OF MEXICO

SOUTH MARSH ISLAND AREA

SM0290

SM0291

TRACT 39421 - Portion of Blocks 289, 290, and 293, South Marsh Island Area, Iberia and Vermilion Parishes, Louisiana

All of the lands now or formerly constituting the beds and bottoms of all water bodies of every nature and description as to which title is vested in the State of Louisiana, together with all islands arising therein and other lands formed by accretion or by reliction, where allowed by law, excepting tax adjudicated lands, and not presently under mineral lease on October 10, 2007, situated in Iberia and Vermilion Parishes, Louisiana, and more particularly described as follows: Beginning at a point on the Louisiana Coastline, as decreed by the Supreme Court of the United States, as determined by a Special Master appointed therein, in litigation styled *United States v. State of Louisiana et al No. 9 Original*, in 1975, having Coordinates of X = 1,787,583.60 and Y = 314,020.23; thence along the boundary of said Coastline the following courses: North 31 degrees 42 minutes 28 seconds West 8,593.43 feet to a point having Coordinates of X = 1,783,067 and Y = 321,331; North 51 degrees 07 minutes 26 seconds West 868.33 feet to a point having Coordinates of X = 1,782,391 and Y = 321,876; North 51 degrees 30 minutes 02 seconds West 269.07 feet to a point having Coordinates of X = 1,782,180.42 and Y = 322,043.50; North 51 degrees 30 minutes 02 seconds West 4,359.01 feet to a point having Coordinates of X = 1,778,769 and Y = 324,757; North 60 degrees 35 minutes 13 seconds West 8,343.48 feet to a point having Coordinates of X = 1,771,500.98 and Y = 328,854.51; North 60 degrees 35 minutes 13 seconds West 617.60 feet to a point having Coordinates of X = 1,770,962.99 and Y = 329,157.81; thence East 7,859.97 feet to a point said to be on the boundary of Marsh Island Wildlife Refuge having Coordinates of X = 1,778,822.96 and Y = 329,157.81; thence along the meanders of said Marsh Island Refuge the following courses: Southeasterly to a point having Coordinates of X = 1,779,888.62 and Y = 327,953.78; Southeasterly to a point having Coordinates of X = 1,781,853.56 and Y = 326,910.34; Southeasterly to a point having Coordinates of X = 1,783,344.33 and Y = 325,788.32; Southeasterly to a point having Coordinates of X = 1,784,935.93 and Y = 325,103.64; Southeasterly to a point having Coordinates of X = 1,786,187.08 and Y = 324,367.15; Southeasterly to a point having Coordinates of X = 1,786,864.54 and Y = 323,692.45; Southeasterly to a point having Coordinates of X = 1,787,583.60 and Y = 323,419.49; thence South 9,399.26 feet to the point of beginning, **LESS AND EXCEPT** that portion, if any, of the Marsh Island Wildlife Refuge that may lie within the above described tract, containing approximately **1,564.34 acres**, all as more particularly outlined on a plat on file in the Office of Mineral Resources, Department of Natural Resources. All bearings, distances and coordinates are based on Louisiana Coordinate System of 1927, (North or South Zone), where applicable.

NOTE: The above description of the Tract nominated for lease has been provided and corrected, where required, exclusively by the nomination party. Any mineral lease selected from this Tract and awarded by the Louisiana State Mineral Board shall be without warranty of any kind, either express, implied, or statutory, including, but not limited to, the

implied warranties of merchantability and fitness for a particular purpose. Should the mineral lease awarded by the Louisiana State Mineral Board be subsequently modified, cancelled or abrogated due to the existence of conflicting leases, operating agreements, private claims or other future obligations or conditions which may affect all or any portion of the leased Tract, it shall not relieve the Lessee of the obligation to pay any bonus due thereon to the Louisiana State Mineral Board, nor shall the Louisiana State Mineral Board be obligated to refund any consideration paid by the Lessor prior to such modification, cancellation, or abrogation, including, but not limited to, bonuses, rentals and royalties.

NOTE: The acreage contained herein, being a portion of State Lease 335, 340 or 341, was subject to the litigation between Texas, Inc. and the State of Louisiana which resulted in the Global Settlement Agreement compromise whereby this acreage was reassigned through various mesne conveyances to the successors of William T. Burton, the original lessee of said leases from the State, (hereinafter otherwise referred to as the "ORRO's) and approved by the State Mineral Board, becoming effective April 25, 1994. Under separate agreement by and between the State and the ORRO's, certain obligations were to be met within a specified time frame or the ORRO's became obligated to release the reassigned acreage back to the State. The obligations were not met within the specified time frame and the State began securing the releases for the acreage contained herein. Due to the extremely large number of ORRO's, their nationwide and worldwide dispersal, the unreliability of available contact information and/or a present inability to obtain full, requisite cooperation, the State has, as yet, not secured releases from certain ORRO's representing approximately a .0258336 interest in this acreage. Accordingly, although the State is diligently pursuing the requisite releases affecting this acreage (the furnishing of which the ORRO's representing the stated decimal interest are obligated), nevertheless, a party obtaining a mineral lease from the State of Louisiana on the acreage contained herein shall do so with full knowledge that a complete release of all specific ORRO interest in this acreage has not as yet been secured and shall assume a business risk commensurate with the unsecured interest release.

NOTE: The Office of Mineral Resources will require a minimum bonus of \$300 per acre and a minimum royalty of 25%.

NOTE: The State of Louisiana does hereby reserve, and this lease shall be subject to, the imprescriptible right of surface use in the nature of a servitude in favor of the Department of Natural Resources, including its Offices and Commissions, for the sole purpose of implementing, constructing, servicing and maintaining approved coastal zone management and/or restoration projects. Utilization of any and all rights derived under this lease by the mineral lessee, its agents, successors or assigns, shall not interfere with nor hinder the reasonable surface use by the Department of Natural Resources, its Offices or Commissions, as herein above reserved.

NOTE: It appears, according to our records, that a portion of this Tract is located within the restrictive safety fairway area as set out by the Corps of Engineers, U.S. Army and/or the restrictive anchorage area as set out by the U.S. Coast Guard.



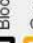

NOTE: The Department of Wildlife and Fisheries has designated certain areas in the coastal waters of the State of Louisiana as Oyster Seed Bed Areas. The exact location of those Seed Bed Areas must be obtained from the Department of Wildlife and Fisheries and any work done under a mineral lease from the State of Louisiana may necessarily be conducted in conformity with the rules and regulations promulgated by the said Department of Wildlife and Fisheries for Oyster Seed Bed Areas.

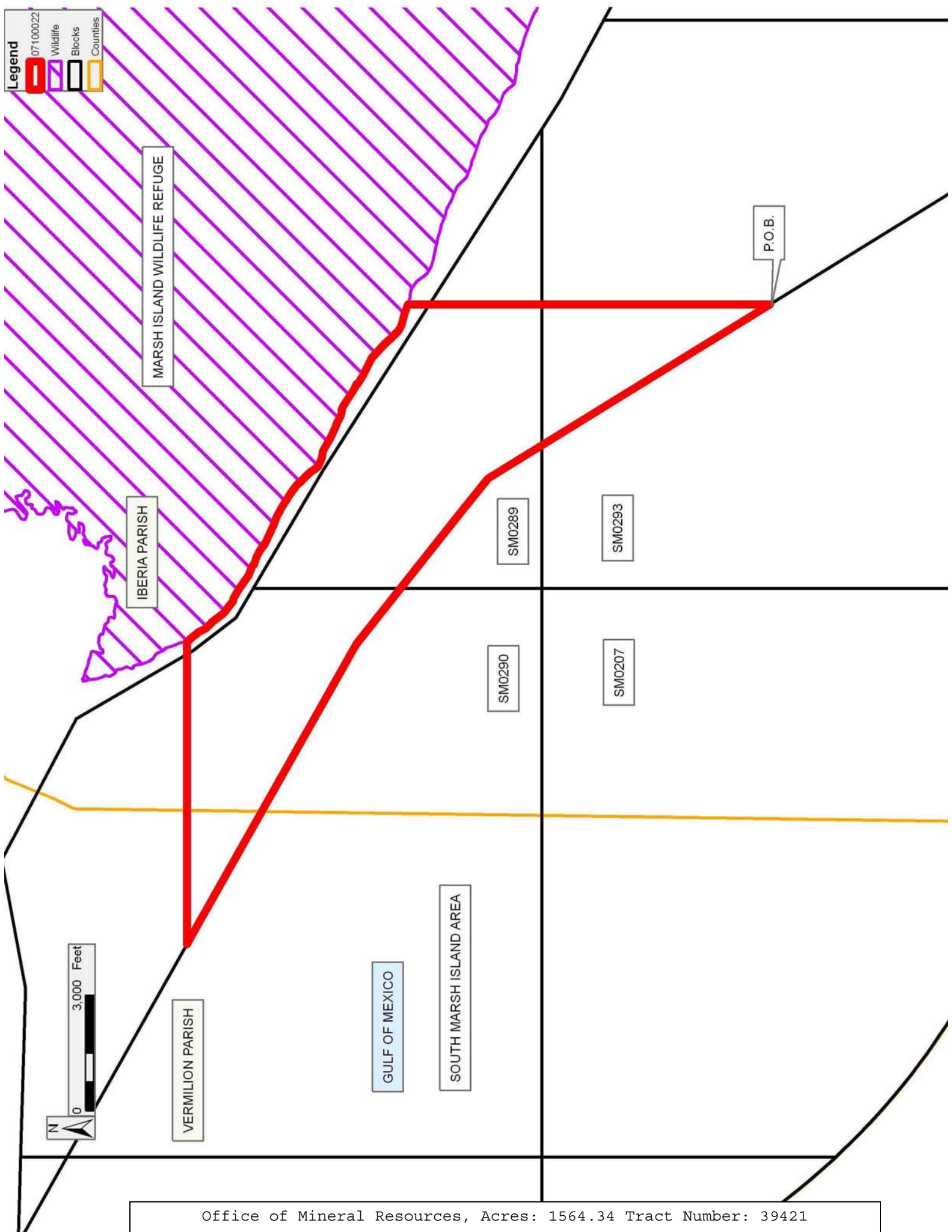
NOTE: All or a portion of this Tract lies within one nautical mile of the boundary of the Russell Sage or Marsh Island Wildlife Refuge and Game Preserve. Any activities connected with this lease conducted within this Tract which may pose potential environmental impacts to the said Wildlife Refuge and Game Preserve should be coordinated with the Louisiana Department of Wildlife and Fisheries.

Applicant: CYPRESS ENERGY CORPORATION

Bidder	Cash Payment	Price/Acre	Rental	Oil	Gas	Other

Legend

-  07100022
-  Wildlife
-  Blocks
-  Counties



TRACT 39422 - Plaquemines Parish, Louisiana

All of the lands now or formerly constituting the beds and bottoms of all water bodies of every nature and description as to which title is vested in the State of Louisiana, together with all islands arising therein and other lands formed by accretion or by reliction, where allowed by law, excepting tax adjudicated lands, and not presently under mineral lease on October 10, 2007, situated in Plaquemines Parish, Louisiana, and more particularly described as follows: Beginning at the Northwest corner of State Lease No. 17722, also being a point on the Southern boundary of State Lease No. 17721 having Coordinates of X = 2,489,068.47 and Y = 250,503.40; thence South 660.00 feet along the West boundary of said State Lease No. 17722, to a point on the Eastern boundary of said State Lease 17721 having Coordinates of X = 2,489,068.47 and Y = 249,843.40; thence along the boundary of State Lease 17721 the following courses: West 660.00 feet to a point having Coordinates of X = 2,488,408.47 and Y = 249,843.40, North 660.00 feet to a point having Coordinates of X = 2,488,408.47 and Y = 250,503.40; and East 660.00 feet to the Point of Beginning, containing approximately **5 acres**, all as more particularly outlined on a plat on file in the Office of Mineral Resources, Department of Natural Resources. All bearings, distances and coordinates are based on Louisiana Coordinate System of 1927, (North or South Zone), where applicable.

NOTE: The above description of the Tract nominated for lease has been provided and corrected, where required, exclusively by the nomination party. Any mineral lease selected from this Tract and awarded by the Louisiana State Mineral Board shall be without warranty of any kind, either express, implied, or statutory, including, but not limited to, the implied warranties of merchantability and fitness for a particular purpose. Should the mineral lease awarded by the Louisiana State Mineral Board be subsequently modified, cancelled or abrogated due to the existence of conflicting leases, operating agreements, private claims or other future obligations or conditions which may affect all or any portion of the leased Tract, it shall not relieve the Lessee of the obligation to pay any bonus due thereon to the Louisiana State Mineral Board, nor shall the Louisiana State Mineral Board be obligated to refund any consideration paid by the Lessor prior to such modification, cancellation, or abrogation, including, but not limited to, bonuses, rentals and royalties.

NOTE: The State of Louisiana does hereby reserve, and this lease shall be subject to, the imprescriptible right of surface use in the nature of a servitude in favor of the Department of Natural Resources, including its Offices and Commissions, for the sole purpose of implementing, constructing, servicing and maintaining approved coastal zone management and/or restoration projects. Utilization of any and all rights derived under this lease by the mineral lessee, its agents, successors or assigns, shall not interfere with nor hinder the reasonable surface use by the Department of Natural Resources, its Offices or Commissions, as herein above reserved.

NOTE: The Department of Wildlife and Fisheries has designated certain areas in the coastal waters of the State of Louisiana as Oyster Seed Bed Areas. The exact location of those Seed Bed Areas must be obtained from the Department of Wildlife and Fisheries and any work done under a mineral lease from the State of Louisiana may necessarily be conducted in conformity with the rules and regulations promulgated by the said Department of Wildlife and Fisheries for Oyster Seed Bed Areas.

Applicant: MARK A O'NEAL & ASSOCIATES INC.

Bidder	Cash Payment	Price/Acre	Rental	Oil	Gas	Other

Legend
07100012
Active_Leases
DOQQ2004

PLAQUEMINES PARISH

BARATARIA BAY

P.O.B.

SL 17722

SL 17721



TRACT 39423 - Terrebonne Parish, Louisiana

All of the lands now or formerly constituting the beds and bottoms of all water bodies of every nature and description as to which title is vested in the State of Louisiana, together with all islands arising therein and other lands formed by accretion or by reliction, where allowed by law, excepting tax adjudicated lands, and not presently under mineral lease on October 10, 2007, situated in Terrebonne Parish, Louisiana, and more particularly described as follows: Beginning at a point having Coordinates of X = 2,254,700.00 and Y = 220,000.00; thence East 10,220.37 feet to a point having Coordinates of X = 2,264,920.37 and Y = 220,000.00; thence South 12,866.89 feet to a point on the Northern boundary of State Lease No. 199, as amended, having Coordinates of X = 2,264,920.37 and Y = 207,133.11; thence along the boundary of said State Lease No. 199 the following courses: South 89 degrees 34 minutes 50 seconds West 1,000.00 feet to a corner having Coordinates of X = 2,263,920.40 and Y = 207,125.79; North 00 degrees 25 minutes 10 seconds West 553.44 feet to a corner having Coordinates of X = 2,263,916.34 and Y = 207,679.21; South 89 degrees 34 minutes 50 seconds West 2,640.00 feet to a corner having Coordinates of X = 2,261,276.41 and Y = 207,659.89; North 00 degrees 25 minutes 10 seconds West 5,097.00 feet to a corner having Coordinates of X = 2,261,239.10 and Y = 212,756.75; South 89 degrees 34 minutes 50 seconds West 3,708.02 feet to a corner having Coordinates of X = 2,257,531.18 and Y = 212,729.60 and South 00 degrees 25 minutes 10 seconds East 2,453.02 feet to a corner having Coordinates of X = 2,257,549.14 and Y = 210,276.65; thence North 58 degrees 22 minutes 49 seconds West 213.46 feet to a point having Coordinates of X = 2,257,367.37 and Y = 210,388.57; thence South 19 degrees 31 minutes 30 seconds West 4,199.19 feet to a point having Coordinates of X = 2,255,963.93 and Y = 206,430.85; thence West 1,263.93 feet to a point having Coordinates of X = 2,254,700.00 and Y = 206,430.85; thence North 13,569.15 feet to the point of beginning, containing approximately **2,474.00 acres**, all as more particularly outlined on a plat on file in the Office of Mineral Resources, Department of Natural Resources. All bearings, distances and coordinates are based on Louisiana Coordinate System of 1927, (North or South Zone), where applicable.

NOTE: The above description of the Tract nominated for lease has been provided and corrected, where required, exclusively by the nomination party. Any mineral lease selected from this Tract and awarded by the Louisiana State Mineral Board shall be without warranty of any kind, either express, implied, or statutory, including, but not limited to, the implied warranties of merchantability and fitness for a particular purpose. Should the mineral lease awarded by the Louisiana State Mineral Board be subsequently modified, cancelled or abrogated due to the existence of conflicting leases, operating agreements, private claims or other future obligations or conditions which may affect all or any portion of the leased Tract, it shall not relieve the Lessee of the obligation to pay any bonus due thereon to the Louisiana State Mineral Board, nor shall the Louisiana State Mineral Board be obligated to refund any consideration

paid by the Lessor prior to such modification, cancellation, or abrogation, including, but not limited to, bonuses, rentals and royalties.

NOTE: The State of Louisiana does hereby reserve, and this lease shall be subject to, the imprescriptible right of surface use in the nature of a servitude in favor of the Department of Natural Resources, including its Offices and Commissions, for the sole purpose of implementing, constructing, servicing and maintaining approved coastal zone management and/or restoration projects. Utilization of any and all rights derived under this lease by the mineral lessee, its agents, successors or assigns, shall not interfere with nor hinder the reasonable surface use by the Department of Natural Resources, its Offices or Commissions, as herein above reserved.

NOTE: The Department of Wildlife and Fisheries has designated certain areas in the coastal waters of the State of Louisiana as Oyster Seed Bed Areas. The exact location of those Seed Bed Areas must be obtained from the Department of Wildlife and Fisheries and any work done under a mineral lease from the State of Louisiana may necessarily be conducted in conformity with the rules and regulations promulgated by the said Department of Wildlife and Fisheries for Oyster Seed Bed Areas.

Applicant: THEOPHILUS OIL GAS & LAND SERVICES, LLC

Bidder	Cash Payment	Price/Acre	Rental	Oil	Gas	Other

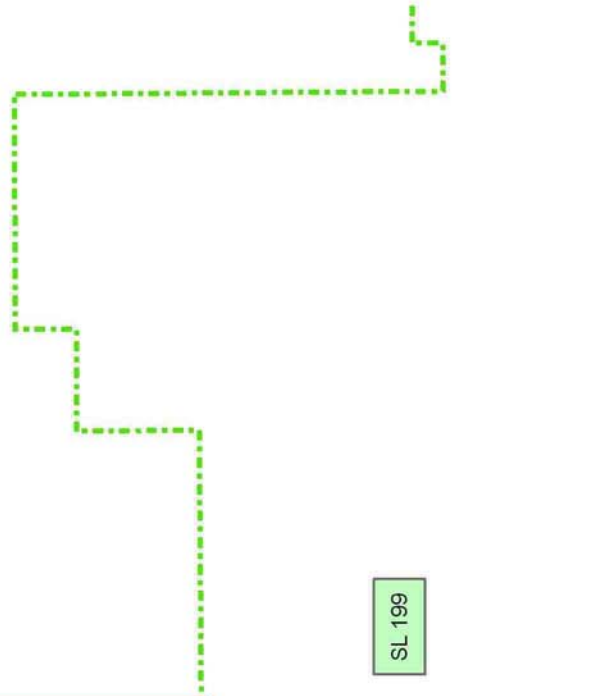
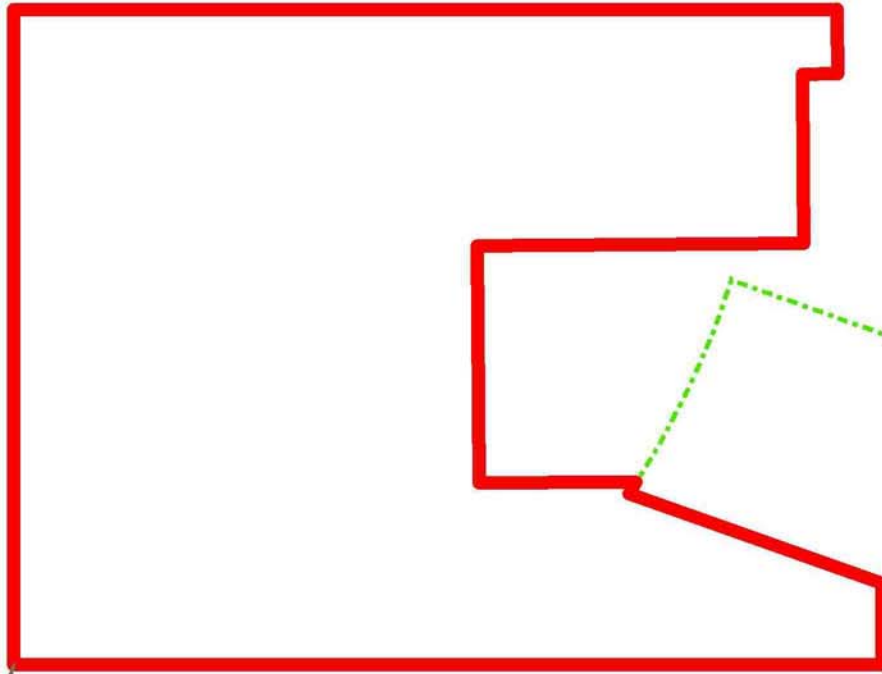
Legend
07100042
Active_Leases



TERREBONNE PARISH

LAKE BARRE

P.O.B.



SL 199

TRACT 39424 - Terrebonne Parish, Louisiana

All of the lands now or formerly constituting the beds and bottoms of all water bodies of every nature and description as to which title is vested in the State of Louisiana, together with all islands arising therein and other lands formed by accretion or by reliction, where allowed by law, excepting tax adjudicated lands, and not presently under mineral lease on October 10, 2007, situated in Terrebonne Parish, Louisiana, and more particularly described as follows: Beginning at a point having Coordinates of X = 2,264,920.37 and Y = 215,000.00; thence East 13,776.84 feet to a point having Coordinates of X = 2,278,697.21 and Y = 215,000.00; thence South 11,143.23 feet to a point on the North boundary of State Lease No. 199, as amended, having Coordinates of X = 2,278,697.21 and Y = 203,856.77; thence along the boundary of said State Lease No. 199 the following courses: South 89 degrees 34 minutes 50 seconds West 3,450.01 feet to a corner having Coordinates of X = 2,275,247.30 and Y = 203,831.52; South 00 degrees 25 minutes 10 seconds East 466.50 feet to a corner having Coordinates of X = 2,275,250.72 and Y = 203,365.03; South 89 degrees 34 minutes 50 seconds West 742.49 feet to a corner having Coordinates of X = 2,274,508.25 and Y = 203,359.60; North 00 degrees 25 minutes 10 seconds West 6,700.04 feet to a corner having Coordinates of X = 2,274,459.20 and Y = 210,059.45; South 89 degrees 34 minutes 50 seconds West 3,676.12 feet to a corner having Coordinates of X = 2,270,783.18 and Y = 210,032.54; South 00 degrees 25 minutes 10 seconds East 946.16 feet to a corner having Coordinates of X = 2,270,790.11 and Y = 209,086.40; South 89 degrees 34 minutes 50 seconds West 1,603.88 feet to a corner having Coordinates of X = 2,269,186.27 and Y = 209,074.66; South 00 degrees 25 minutes 10 seconds East 1,910.27 feet to a corner having Coordinates of X = 2,269,200.25 and Y = 207,164.44 and South 89 degrees 34 minutes 50 seconds West 4,279.99 feet to a point having Coordinates of X = 2,264,920.37 and Y = 207,133.11; thence North 7,866.89 feet to the point of beginning, containing approximately **2,494.68 acres**, all as more particularly outlined on a plat on file in the Office of Mineral Resources, Department of Natural Resources. All bearings, distances and coordinates are based on Louisiana Coordinate System of 1927, (North or South Zone), where applicable.

NOTE: The above description of the Tract nominated for lease has been provided and corrected, where required, exclusively by the nomination party. Any mineral lease selected from this Tract and awarded by the Louisiana State Mineral Board shall be without warranty of any kind, either express, implied, or statutory, including, but not limited to, the implied warranties of merchantability and fitness for a particular purpose. Should the mineral lease awarded by the Louisiana State Mineral Board be subsequently modified, cancelled or abrogated due to the existence of conflicting leases, operating agreements, private claims or other future obligations or conditions which may affect all or any portion of the leased Tract, it shall not relieve the Lessee of the obligation to pay any bonus due thereon to the Louisiana State Mineral Board, nor shall the Louisiana State Mineral Board be obligated to refund any consideration

paid by the Lessor prior to such modification, cancellation, or abrogation, including, but not limited to, bonuses, rentals and royalties.

NOTE: The State of Louisiana does hereby reserve, and this lease shall be subject to, the imprescriptible right of surface use in the nature of a servitude in favor of the Department of Natural Resources, including its Offices and Commissions, for the sole purpose of implementing, constructing, servicing and maintaining approved coastal zone management and/or restoration projects. Utilization of any and all rights derived under this lease by the mineral lessee, its agents, successors or assigns, shall not interfere with nor hinder the reasonable surface use by the Department of Natural Resources, its Offices or Commissions, as herein above reserved.

NOTE: The Department of Wildlife and Fisheries has designated certain areas in the coastal waters of the State of Louisiana as Oyster Seed Bed Areas. The exact location of those Seed Bed Areas must be obtained from the Department of Wildlife and Fisheries and any work done under a mineral lease from the State of Louisiana may necessarily be conducted in conformity with the rules and regulations promulgated by the said Department of Wildlife and Fisheries for Oyster Seed Bed Areas.

Applicant: THEOPHILUS OIL GAS & LAND SERVICES, LLC

Bidder	Cash Payment	Price/Acre	Rental	Oil	Gas	Other

Legend

- 07100044
- Active_Leases



TERREBONNE PARISH

LAKE BARRE

P.O.B.

SL 199

TRACT 39425 - Terrebonne Parish, Louisiana

All of the lands now or formerly constituting the beds and bottoms of all water bodies of every nature and description as to which title is vested in the State of Louisiana, together with all islands arising therein and other lands formed by accretion or by reliction, where allowed by law, excepting tax adjudicated lands, and not presently under mineral lease on October 10, 2007, situated in Terrebonne Parish, Louisiana, and more particularly described as follows: Beginning at a point having Coordinates of X = 2,278,697.21 and Y = 207,822.13; thence East 9,620.51 feet to a point having Coordinates of X = 2,288,317.72 and Y = 207,822.13; thence South 14,805.00 feet to a point having Coordinates of X = 2,288,317.72 and Y = 193,017.13; thence West 4,000.00 feet to a point on the East boundary of State Lease No. 199, as amended, having Coordinates of X = 2,284,317.72 and Y = 193,017.13; thence along the boundary of said State Lease No. 199 the following courses: North 00 degrees 25 minutes 10 seconds West 4,000.00 feet to a corner having Coordinates of X = 2,284,288.43 and Y = 197,017.02; South 89 degrees 34 minutes 50 seconds West 2,600.00 feet to a corner having Coordinates of X = 2,281,688.50 and Y = 196,997.99; North 00 degrees 25 minutes 10 seconds West 1,200.00 feet to a corner having Coordinates of X = 2,281,679.72 and Y = 198,197.96; South 89 degrees 34 minutes 50 seconds West 326.96 feet to a corner having Coordinates of X = 2,281,352.77 and Y = 198,195.57; North 18 degrees 18 minutes 50 seconds East 239.08 feet to a corner having Coordinates of X = 2,281,427.90 and Y = 198,422.54; North 10 degrees 11 minutes 50 seconds East 162.80 feet to a corner having Coordinates of X = 2,281,456.72 and Y = 198,582.77; North 00 degrees 25 minute 10 seconds West 65.00 feet to a corner having Coordinates of X = 2,281,456.24 and Y = 198,647.76; North 01 degrees 45 minutes 10 seconds West 215.10 feet to a corner having Coordinates of X = 2,281,449.66 and Y = 198,862.76; North 07 degrees 08 minutes 10 seconds West 85.60 feet to a corner having Coordinates of X = 2,281,439.03 and Y = 198,947.70; North 13 degrees 06 minutes 10 seconds West 205.00 feet to a corner having Coordinates of X = 2,281,392.56 and Y = 199,147.36; North 09 degrees 53 minutes 10 seconds West 152.10 feet to a corner having Coordinates of X = 2,281,366.44 and Y = 199,297.20; North 00 degrees 25 minutes 10 seconds West 80.00 feet to a corner having Coordinates of X = 2,281,365.86 and Y = 199,377.20; North 08 degrees 15 minutes 50 seconds East 74.20 feet to a corner having Coordinates of X = 2,281,376.52 and Y = 199,450.63; North 19 degrees 57 minutes 50 seconds East 369.90 feet to a corner having Coordinates of X = 2,281,502.82 and Y = 199,798.30; South 58 degrees 47 minutes 50 seconds West 273.50 feet to a corner having Coordinates of X = 2,281,268.88 and Y = 199,656.61; South 48 degrees 43 minutes 50 seconds West 244.60 feet to a corner having Coordinates of X = 2,281,085.04 and Y = 199,495.27; South 44 degrees 34 minutes 50 seconds West 282.90 feet to a corner having Coordinates of X = 2,280,886.46 and Y = 199,293.77; South 54 degrees 47 minutes 50 seconds West 219.20 feet to a corner having Coordinates of X = 2,280,707.35 and Y = 199,167.41; North 04 degrees 08 minutes 50 seconds East 125.40 feet to a corner having Coordinates of X = 2,280,716.42 and Y = 199,292.48; North 10 degrees 31 minutes 50 seconds East 157.90 feet to a corner having Coordinates of X =

2,280,745.28 and Y = 199,447.72; North 14 degrees 59 minutes 50 seconds East 150.40 feet to a corner having Coordinates of X = 2,280,784.20 and Y = 199,593.00; North 17 degrees 19 minutes 50 seconds East 131.30 feet to a corner having Coordinates of X = 2,280,823.31 and Y = 199,718.34; North 24 degrees 16 minutes 50 seconds East 275.20 feet to a corner having Coordinates of X = 2,280,936.47 and Y = 199,969.20; North 24 degrees 08 minutes 50 seconds East 192.40 feet to a corner having Coordinates of X = 2,281,015.18 and Y = 200,144.76; South 76 degrees 31 minutes 50 seconds West 354.10 feet to a corner having Coordinates of X = 2,280,670.82 and Y = 200,062.28; North 33 degrees 47 minutes 50 seconds East 302.30 feet to a corner having Coordinates of X = 2,280,838.98 and Y = 200,313.50; South 73 degrees 25 minutes 50 seconds West 197.80 feet to a corner having Coordinates of X = 2,280,649.39 and Y = 200,257.09; North 20 degrees 56 minutes 50 seconds East 123.50 feet to a corner having Coordinates of X = 2,280,693.54 and Y = 200,372.43; North 83 degrees 47 minutes 10 seconds West 432.90 feet to a corner having Coordinates of X = 2,280,263.19 and Y = 200,419.28; North 81 degrees 21 minutes 10 seconds West 349.30 feet to a corner having Coordinates of X = 2,279,917.86 and Y = 200,471.80; North 17 degrees 14 minutes 50 seconds East 477.50 feet to a corner having Coordinates of X = 2,280,059.43 and Y = 200,927.83; North 81 degrees 26 minutes 10 seconds West 256.20 feet to a corner having Coordinates of X = 2,279,806.09 and Y = 200,965.98; North 80 degrees 44 minutes 10 seconds West 357.00 feet to a corner having Coordinates of X = 2,279,453.75 and Y = 201,023.45; North 78 degrees 49 minutes 10 seconds West 189.65 feet to a corner having Coordinates of X = 2,279,267.70 and Y = 201,060.22; North 00 degrees 25 minutes 10 seconds West 951.69 feet to a corner having Coordinates of X = 2,279,260.73 and Y = 202,011.89; North 20 degrees 01 minutes 50 seconds East 288.31 feet to a corner having Coordinates of X = 2,279,359.49 and Y = 202,282.76; North 23 degrees 07 minutes 50 seconds East 250.20 feet to a corner having Coordinates of X = 2,279,457.77 and Y = 202,512.85; North 28 degrees 55 minutes 50 seconds East 224.40 feet to a corner having Coordinates of X = 2,279,566.32 and Y = 202,709.24; North 32 degrees 28 minutes 50 seconds East 202.50 feet to a corner having Coordinates of X = 2,279,675.07 and Y = 202,880.07; South 88 degrees 16 minutes 50 seconds West 220.10 feet to a corner having Coordinates of X = 2,279,455.07 and Y = 202,873.46; South 82 degrees 47 minutes 50 seconds West 202.05 feet to a corner having Coordinates of X = 2,279,254.61 and Y = 202,848.13; North 00 degrees 25 minutes 10 seconds West 1,012.70 feet to a corner having Coordinates of X = 2,279,247.20 and Y = 203,860.80 and South 89 degrees 34 minutes 50 seconds West 550.00 feet to a point having Coordinates of X = 2,278,697.21 and Y = 203,856.77; thence North 3,965.36 feet to the point of beginning, containing approximately **2,491.49 acres**, all as more particularly outlined on a plat on file in the Office of Mineral Resources, Department of Natural Resources. All bearings, distances and coordinates are based on Louisiana Coordinate System of 1927, (North or South Zone), where applicable.

NOTE: The above description of the Tract nominated for lease has been provided and corrected, where required, exclusively by the nomination

party. Any mineral lease selected from this Tract and awarded by the Louisiana State Mineral Board shall be without warranty of any kind, either express, implied, or statutory, including, but not limited to, the implied warranties of merchantability and fitness for a particular purpose. Should the mineral lease awarded by the Louisiana State Mineral Board be subsequently modified, cancelled or abrogated due to the existence of conflicting leases, operating agreements, private claims or other future obligations or conditions which may affect all or any portion of the leased Tract, it shall not relieve the Lessee of the obligation to pay any bonus due thereon to the Louisiana State Mineral Board, nor shall the Louisiana State Mineral Board be obligated to refund any consideration paid by the Lessor prior to such modification, cancellation, or abrogation, including, but not limited to, bonuses, rentals and royalties.

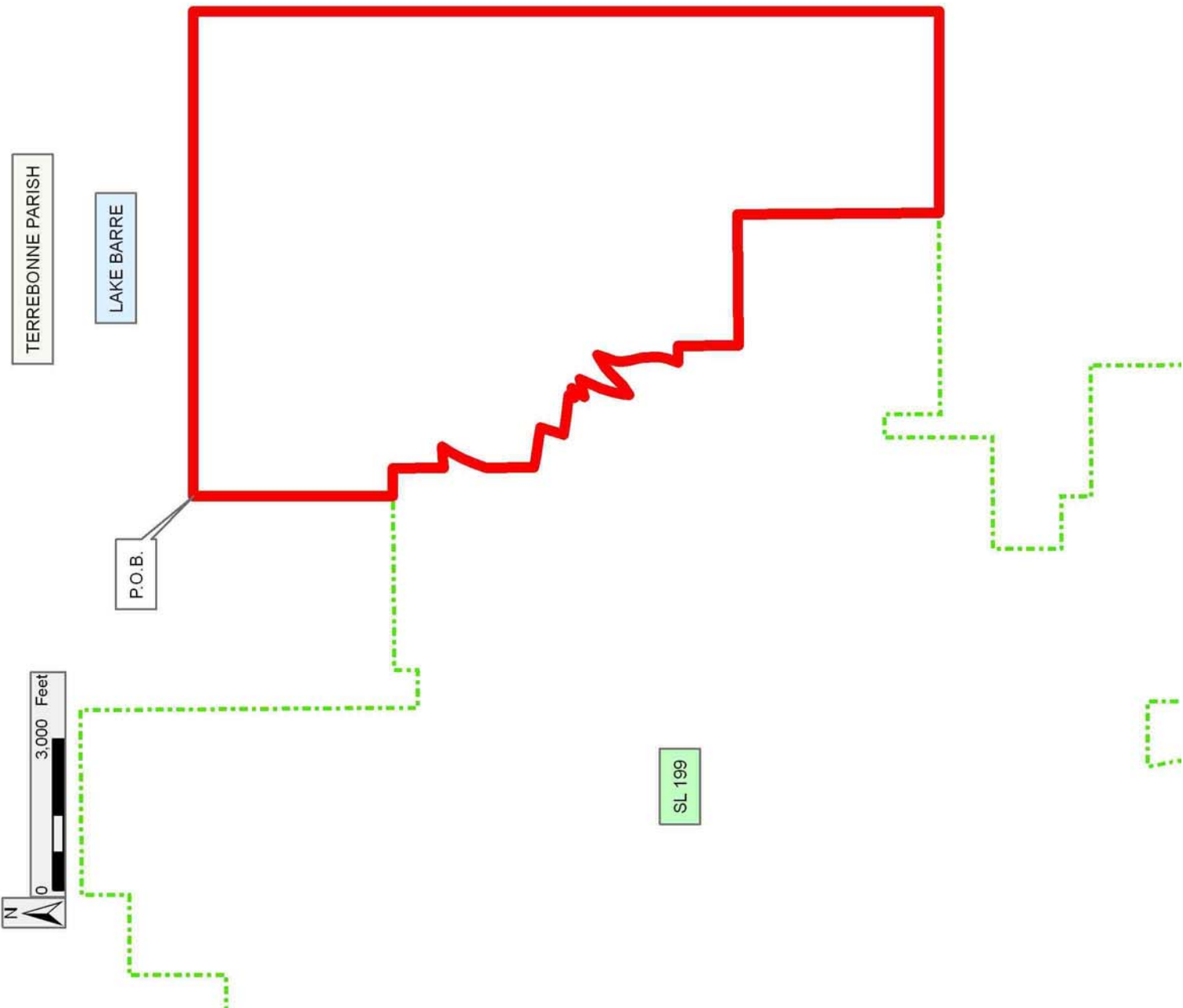
NOTE: The State of Louisiana does hereby reserve, and this lease shall be subject to, the imprescriptible right of surface use in the nature of a servitude in favor of the Department of Natural Resources, including its Offices and Commissions, for the sole purpose of implementing, constructing, servicing and maintaining approved coastal zone management and/or restoration projects. Utilization of any and all rights derived under this lease by the mineral lessee, its agents, successors or assigns, shall not interfere with nor hinder the reasonable surface use by the Department of Natural Resources, its Offices or Commissions, as herein above reserved.

NOTE: The Department of Wildlife and Fisheries has designated certain areas in the coastal waters of the State of Louisiana as Oyster Seed Bed Areas. The exact location of those Seed Bed Areas must be obtained from the Department of Wildlife and Fisheries and any work done under a mineral lease from the State of Louisiana may necessarily be conducted in conformity with the rules and regulations promulgated by the said Department of Wildlife and Fisheries for Oyster Seed Bed Areas.

Applicant: THEOPHILUS OIL GAS & LAND SERVICES, LLC

Bidder	Cash Payment	Price/Acre	Rental	Oil	Gas	Other

Legend
07100045
Active_Leases



TRACT 39426 - Portion of Blocks 115, and 116, South Timbalier Area, Revised, Terrebonne Parish, Louisiana

All of the lands now or formerly constituting the beds and bottoms of all water bodies of every nature and description as to which title is vested in the State of Louisiana, together with all islands arising therein and other lands formed by accretion or by reliction, where allowed by law, excepting tax adjudicated lands, and not presently under mineral lease on October 10, 2007, situated in Terrebonne Parish, Louisiana, and more particularly described as follows: Beginning at a point having Coordinates of X = 2,252,550.00 and Y = 206,430.85; thence East 3,413.93 feet to a point having Coordinates of X = 2,255,963.93 and Y = 206,430.85; thence South 19 degrees 31 minutes 30 seconds West 3,480.57 feet to a point having Coordinates of X = 2,254,800.66 and Y = 203,150.43; thence South 58 degrees 22 minutes 44 seconds East 940.86 feet to a point having Coordinates of X = 2,255,601.83 and Y = 202,657.13; thence South 62 degrees 20 minutes 39 seconds East 929.31 feet to a point having Coordinates of X = 2,256,424.97 and Y = 202,225.79; thence South 66 degrees 23 minutes 18 seconds East 922.32 feet to a point having Coordinates of X = 2,257,270.07 and Y = 201,856.36; thence South 70 degrees 28 minutes 30 seconds East 919.97 feet to a point having Coordinates of X = 2,258,137.14 and Y = 201,548.89; thence North 19 degrees 31 minutes 31 seconds East 1,594.56 feet to a point on the Western boundary of State Lease No. 199, as amended, having Coordinates of X = 2,258,670.08 and Y = 203,051.75; thence along the Western boundary of said State Lease No. 199 the following courses: South 00 degrees 25 minutes 10 seconds East 5,971.07 feet to a corner having Coordinates of X = 2,258,713.79 and Y = 197,080.84; North 89 degrees 34 minutes 50 seconds East 3,858.18 feet to a corner having Coordinates of X = 2,262,571.87 and Y = 197,109.09; South 00 degrees 25 minutes 10 seconds East 3,225.07 feet to a corner having Coordinates of X = 2,262,595.48 and Y = 193,884.10; North 89 degrees 34 minutes 50 seconds East 568.42 feet to a corner having Coordinates of X = 2,263,163.88 and Y = 193,888.27; South 26 degrees 34 minutes 50 seconds West 102.72 feet to a corner having Coordinates of X = 2,263,117.92 and Y = 193,796.40; South 27 degrees 34 minutes 50 seconds West 243.50 feet to a corner having Coordinates of X = 2,263,005.18 and Y = 193,580.57; South 30 degrees 19 minutes 50 seconds West 168.72 feet to a corner having Coordinates of X = 2,262,919.98 and Y = 193,434.95; South 32 degrees 19 minutes 50 seconds West 178.35 feet to a corner having Coordinates 2,262,824.60 and Y = 193,284.24; South 34 degrees 34 minutes 50 seconds West 219.74 feet to a corner having Coordinates of X = 2,262,699.88 and Y = 193,103.33; South 37 degrees 04 minutes 50 seconds West 195.37 feet to a corner having Coordinates of X = 2,262,582.08 and Y = 192,947.46; South 39 degrees 34 minutes 50 seconds West 300.24 feet to a corner having Coordinates of X = 2,262,390.78 and Y = 192,716.06; South 39 degrees 51 minutes 50 seconds West 589.89 feet to a corner having Coordinates of X = 2,262,012.68 and Y = 192,263.28; South 41 degrees 51 minutes 36 seconds West 592.49 feet to a corner having Coordinates of X = 2,261,617.31 and Y = 191,822.00; South 44 degrees 31 minutes 01 seconds West 1,038.29 feet to a corner having Coordinates of X = 2,260,889.34 and

Y = 191,081.66 and South 46 degrees 17 minutes 50 seconds West 437.57 feet to a corner having Coordinates of X = 2,260,573.01 and Y = 190,779.33; thence West 8,023.01 feet to a point within Block 115, South Timbalier Area, Revised having Coordinates of X = 2,252,550.00 and Y = 190,779.33; thence North 15,651.52 feet to the point of beginning, containing approximately **2,402.12 acres**, all as more particularly outlined on a plat on file in the Office of Mineral Resources, Department of Natural Resources. All bearings, distances and coordinates are based on Louisiana Coordinate System of 1927, (North or South Zone), where applicable.

NOTE: The above description of the Tract nominated for lease has been provided and corrected, where required, exclusively by the nomination party. Any mineral lease selected from this Tract and awarded by the Louisiana State Mineral Board shall be without warranty of any kind, either express, implied, or statutory, including, but not limited to, the implied warranties of merchantability and fitness for a particular purpose. Should the mineral lease awarded by the Louisiana State Mineral Board be subsequently modified, cancelled or abrogated due to the existence of conflicting leases, operating agreements, private claims or other future obligations or conditions which may affect all or any portion of the leased Tract, it shall not relieve the Lessee of the obligation to pay any bonus due thereon to the Louisiana State Mineral Board, nor shall the Louisiana State Mineral Board be obligated to refund any consideration paid by the Lessor prior to such modification, cancellation, or abrogation, including, but not limited to, bonuses, rentals and royalties.

NOTE: The State of Louisiana does hereby reserve, and this lease shall be subject to, the imprescriptible right of surface use in the nature of a servitude in favor of the Department of Natural Resources, including its Offices and Commissions, for the sole purpose of implementing, constructing, servicing and maintaining approved coastal zone management and/or restoration projects. Utilization of any and all rights derived under this lease by the mineral lessee, its agents, successors or assigns, shall not interfere with nor hinder the reasonable surface use by the Department of Natural Resources, its Offices or Commissions, as herein above reserved.

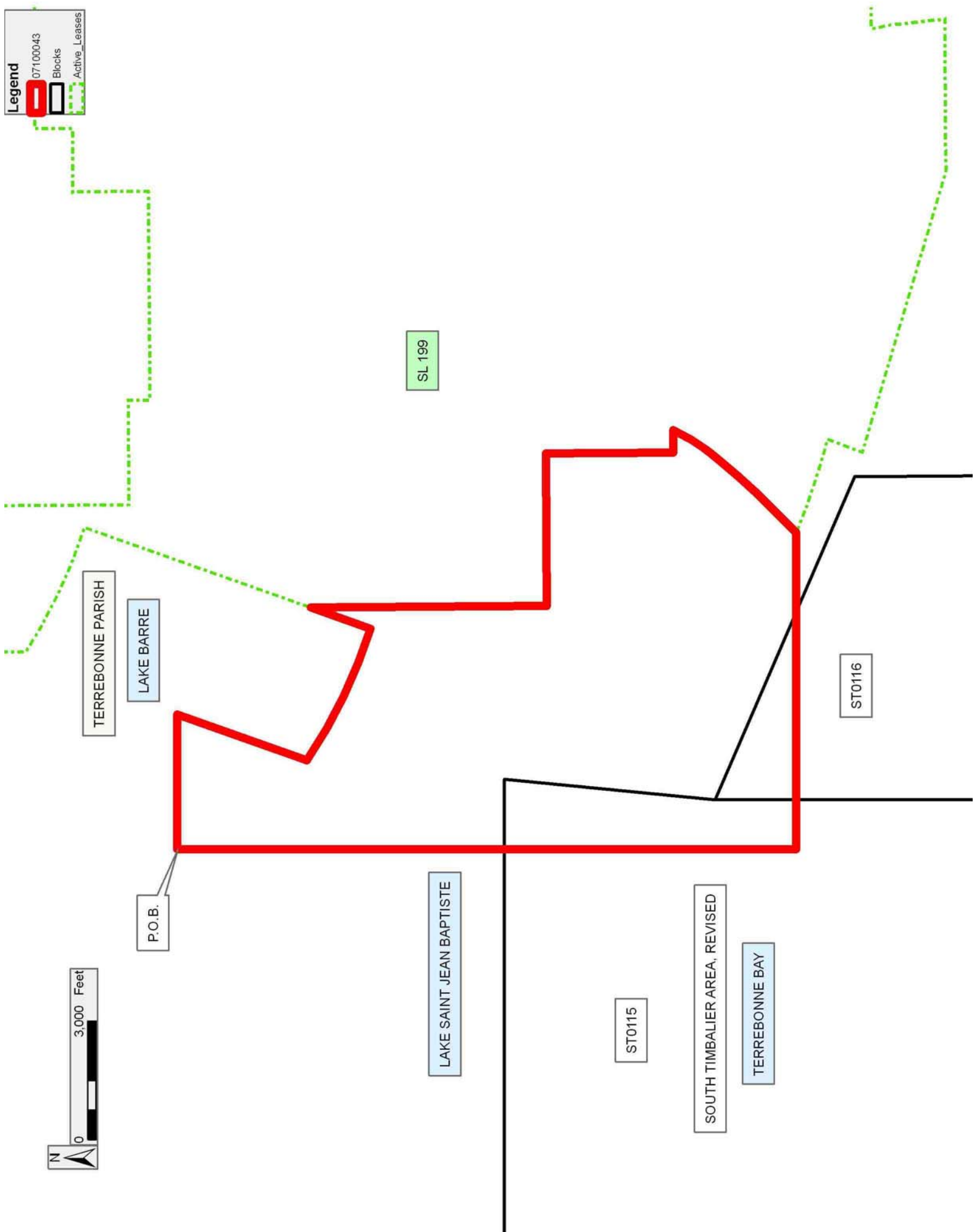
NOTE: The Department of Wildlife and Fisheries has designated certain areas in the coastal waters of the State of Louisiana as Oyster Seed Bed Areas. The exact location of those Seed Bed Areas must be obtained from the Department of Wildlife and Fisheries and any work done under a mineral lease from the State of Louisiana may necessarily be conducted in conformity with the rules and regulations promulgated by the said Department of Wildlife and Fisheries for Oyster Seed Bed Areas.

Applicant: THEOPHILUS OIL GAS & LAND SERVICES, LLC

Bidder	Cash Payment	Price/Acre	Rental	Oil	Gas	Other

Legend

- 071000.43
- Blocks
- Active_Leases



TRACT 39427 - Terrebonne Parish, Louisiana

All of the lands now or formerly constituting the beds and bottoms of all water bodies of every nature and description as to which title is vested in the State of Louisiana, together with all islands arising therein and other lands formed by accretion or by reliction, where allowed by law, excepting tax adjudicated lands, and not presently under mineral lease on October 10, 2007, situated in Terrebonne Parish, Louisiana, and more particularly described as follows: Beginning at a point on the Southern boundary of State Lease No. 199, as amended, having Coordinates of X = 2,275,192.92 and Y = 187,016.22; thence along the boundary of said State Lease No. 199 the following courses: North 89 degrees 34 minutes 50 seconds East 6,118.19 feet to a corner having Coordinates of X = 2,281,310.94 and Y = 187,061.00; North 00 degrees 25 minutes 10 seconds West 2,955.66 feet to a corner having Coordinates of X = 2,281,289.30 and Y = 190,016.58; South 89 degrees 34 minutes 50 seconds West 2,600.00 feet to a corner having Coordinates of X = 2,278,689.37 and Y = 189,997.55; North 00 degrees 25 minutes 10 seconds West 600.00 feet to a corner having Coordinates 2,278,684.98 and Y = 190,597.53; South 89 degrees 34 minutes 50 seconds West 1,023.22 feet to a corner having Coordinates of X = 2,277,661.79 and Y = 190,590.04; North 00 degrees 25 minutes 10 seconds West 1,349.35 feet to a corner having Coordinates of X = 2,277,651.91 and Y = 191,939.35; North 89 degrees 34 minutes 50 seconds East 2,220.03 feet to a corner having Coordinates of X = 2,279,871.88 and Y = 191,955.60; North 00 degrees 25 minutes 10 seconds West 2,140.16 feet to a corner having Coordinates of X = 2,279,856.21 and Y = 194,095.70; North 89 degrees 34 minutes 50 seconds East 453.49 feet to a corner having Coordinates 2,280,309.69 and Y = 194,099.02; South 00 degrees 25 minutes 10 seconds East 1,111.20 feet to a corner having Coordinates of X = 2,280,317.82 and Y = 192,987.85 and North 89 degrees 34 minutes 50 seconds East 4,000.01 feet to a corner having Coordinates 2,284,317.72 and Y = 193,017.13; thence East 4,000.00 feet to a point having Coordinates of X = 2,288,317.72 and Y = 193,017.13; thence South 10,433.91 feet to a point having Coordinates of X = 2,288,317.72 and Y = 182,583.22; thence West 13,124.80 feet to a point having Coordinates of X = 2,275,192.92 and Y = 182,583.22; thence North 4,433.00 feet to the point of beginning, containing approximately **2,499.06 acres**, all as more particularly outlined on a plat on file in the Office of Mineral Resources, Department of Natural Resources. All bearings, distances and coordinates are based on Louisiana Coordinate System of 1927, (North or South Zone), where applicable.

NOTE: The above description of the Tract nominated for lease has been provided and corrected, where required, exclusively by the nomination party. Any mineral lease selected from this Tract and awarded by the Louisiana State Mineral Board shall be without warranty of any kind, either express, implied, or statutory, including, but not limited to, the implied warranties of merchantability and fitness for a particular purpose. Should the mineral lease awarded by the Louisiana State Mineral Board be subsequently modified, cancelled or abrogated due to the

existence of conflicting leases, operating agreements, private claims or other future obligations or conditions which may affect all or any portion of the leased Tract, it shall not relieve the Lessee of the obligation to pay any bonus due thereon to the Louisiana State Mineral Board, nor shall the Louisiana State Mineral Board be obligated to refund any consideration paid by the Lessor prior to such modification, cancellation, or abrogation, including, but not limited to, bonuses, rentals and royalties.

NOTE: The State of Louisiana does hereby reserve, and this lease shall be subject to, the imprescriptible right of surface use in the nature of a servitude in favor of the Department of Natural Resources, including its Offices and Commissions, for the sole purpose of implementing, constructing, servicing and maintaining approved coastal zone management and/or restoration projects. Utilization of any and all rights derived under this lease by the mineral lessee, its agents, successors or assigns, shall not interfere with nor hinder the reasonable surface use by the Department of Natural Resources, its Offices or Commissions, as herein above reserved.

NOTE: The Department of Wildlife and Fisheries has designated certain areas in the coastal waters of the State of Louisiana as Oyster Seed Bed Areas. The exact location of those Seed Bed Areas must be obtained from the Department of Wildlife and Fisheries and any work done under a mineral lease from the State of Louisiana may necessarily be conducted in conformity with the rules and regulations promulgated by the said Department of Wildlife and Fisheries for Oyster Seed Bed Areas.

Applicant: THEOPHILUS OIL GAS & LAND SERVICES, LLC

Bidder	Cash Payment	Price/Acre	Rental	Oil	Gas	Other

Legend
07100041
Active_Leases
DOQQ2004

TERREBONNE PARISH

LAKE BARRE

SL 199

TIMBALIER BAY

P.O.B.



TRACT 39428 - Portion of Blocks 115, and 116, South Timbalier Area, Revised, Terrebonne Parish, Louisiana

All of the lands now or formerly constituting the beds and bottoms of all water bodies of every nature and description as to which title is vested in the State of Louisiana, together with all islands arising therein and other lands formed by accretion or by reliction, where allowed by law, excepting tax adjudicated lands, and not presently under mineral lease on October 10, 2007, situated in Terrebonne Parish, Louisiana, and more particularly described as follows: Beginning at a point within Block 115, South Timbalier Area, Revised, having Coordinates of X = 2,252,550.00 and Y = 190,779.33; thence East 7,249.00 feet to a point having Coordinates of X = 2,259,799.00 and Y = 190,779.33; thence South 8,083.85 feet to a point within Block 116, South Timbalier Area, Revised, having Coordinates of X = 2,259,799.00 and Y = 182,695.48; thence West 7,249.00 feet to a point within said Block 115 having Coordinates of X = 2,252,550.00 and Y = 182,695.48; thence North 8,083.85 feet to the point of beginning, containing approximately **1,345.27 acres**, all as more particularly outlined on a plat on file in the Office of Mineral Resources, Department of Natural Resources. All bearings, distances and coordinates are based on Louisiana Coordinate System of 1927, (North or South Zone), where applicable.

NOTE: The above description of the Tract nominated for lease has been provided and corrected, where required, exclusively by the nomination party. Any mineral lease selected from this Tract and awarded by the Louisiana State Mineral Board shall be without warranty of any kind, either express, implied, or statutory, including, but not limited to, the implied warranties of merchantability and fitness for a particular purpose. Should the mineral lease awarded by the Louisiana State Mineral Board be subsequently modified, cancelled or abrogated due to the existence of conflicting leases, operating agreements, private claims or other future obligations or conditions which may affect all or any portion of the leased Tract, it shall not relieve the Lessee of the obligation to pay any bonus due thereon to the Louisiana State Mineral Board, nor shall the Louisiana State Mineral Board be obligated to refund any consideration paid by the Lessor prior to such modification, cancellation, or abrogation, including, but not limited to, bonuses, rentals and royalties.

NOTE: The State of Louisiana does hereby reserve, and this lease shall be subject to, the imprescriptible right of surface use in the nature of a servitude in favor of the Department of Natural Resources, including its Offices and Commissions, for the sole purpose of implementing, constructing, servicing and maintaining approved coastal zone management and/or restoration projects. Utilization of any and all rights derived under this lease by the mineral lessee, its agents, successors or assigns, shall not interfere with nor hinder the reasonable surface use by the Department of Natural Resources, its Offices or Commissions, as herein above reserved.

NOTE: The Department of Wildlife and Fisheries has designated certain areas in the coastal waters of the State of Louisiana as Oyster Seed Bed Areas. The exact location of those Seed Bed Areas must be obtained from the Department of Wildlife and Fisheries and any work done under a mineral lease from the State of Louisiana may necessarily be conducted in conformity with the rules and regulations promulgated by the said Department of Wildlife and Fisheries for Oyster Seed Bed Areas.

Applicant: THEOPHILUS OIL GAS & LAND SERVICES, LLC

Bidder	Cash Payment	Price/Acre	Rental	Oil	Gas	Other

