

TRACT 39409 - Caddo Parish, Louisiana

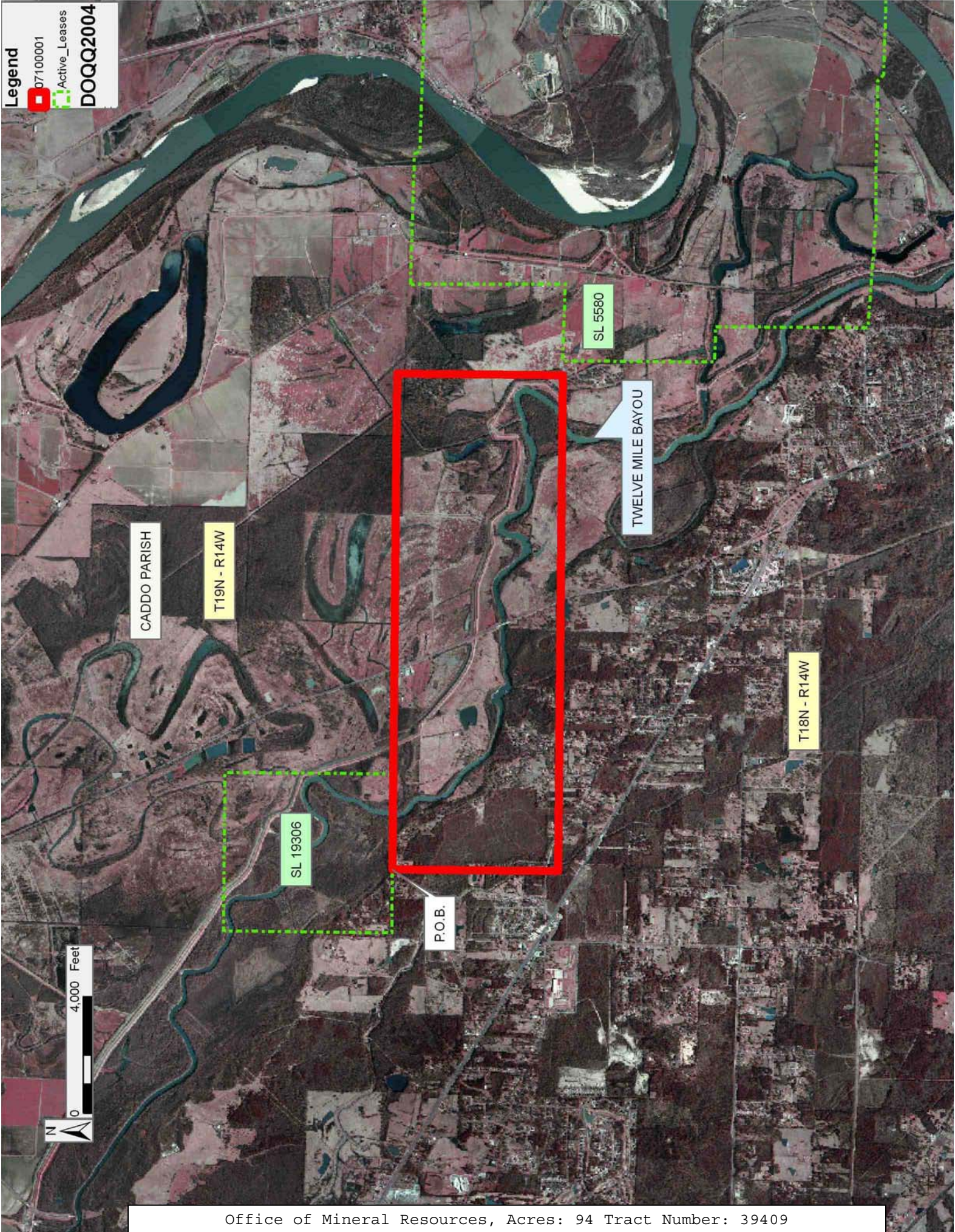
All of the lands now or formerly constituting the beds and bottoms of all water bodies of every nature and description as to which title is vested in the State of Louisiana, together with all islands arising therein and other lands formed by accretion or by reliction, where allowed by law, excepting tax adjudicated lands, and not presently under mineral lease on October 10, 2007, situated in Caddo Parish, Louisiana, and more particularly described as follows: Beginning at a point on the South line of Sate Lease No. 19306 having Coordinates of X = 1,588,066.00 and Y = 711,847.37; thence East 3,260.99 feet along the South line of said State Lease No. 19306 to its Southeast corner having Coordinates of X = 1,591,326.99 and Y = 711,847.37; thence East 13,739.01 feet to a point having Coordinates of X = 1,605,066.00 and Y = 711,847.37; thence South 5,669.37 feet to a point having Coordinates of X = 1,605,066.00 and Y = 706,175.00; thence West 17,000.00 feet to a point having Coordinates of X = 1,588,066.00 and Y = 706,175.00; thence North 5,669.37 feet to the point of beginning, containing approximately **94 acres**, all as more particularly outlined on a plat on file in the Office of Mineral Resources, Department of Natural Resources. All bearings, distances and coordinates are based on Louisiana Coordinate System of 1927, (North or South Zone), where applicable.

NOTE: The above description of the Tract nominated for lease has been provided and corrected, where required, exclusively by the nomination party. Any mineral lease selected from this Tract and awarded by the Louisiana State Mineral Board shall be without warranty of any kind, either express, implied, or statutory, including, but not limited to, the implied warranties of merchantability and fitness for a particular purpose. Should the mineral lease awarded by the Louisiana State Mineral Board be subsequently modified, cancelled or abrogated due to the existence of conflicting leases, operating agreements, private claims or other future obligations or conditions which may affect all or any portion of the leased Tract, it shall not relieve the Lessee of the obligation to pay any bonus due thereon to the Louisiana State Mineral Board, nor shall the Louisiana State Mineral Board be obligated to refund any consideration paid by the Lessor prior to such modification, cancellation, or abrogation, including, but not limited to, bonuses, rentals and royalties.

Applicant: NADEL AND GUSSMAN-JETTA OPERATING COMPANY

Bidder	Cash Payment	Price/Acre	Rental	Oil	Gas	Other

Legend
07100001
Active_Leases
DOQQ2004



TRACT 39410 - East Feliciana and St. Helena Parishes, Louisiana

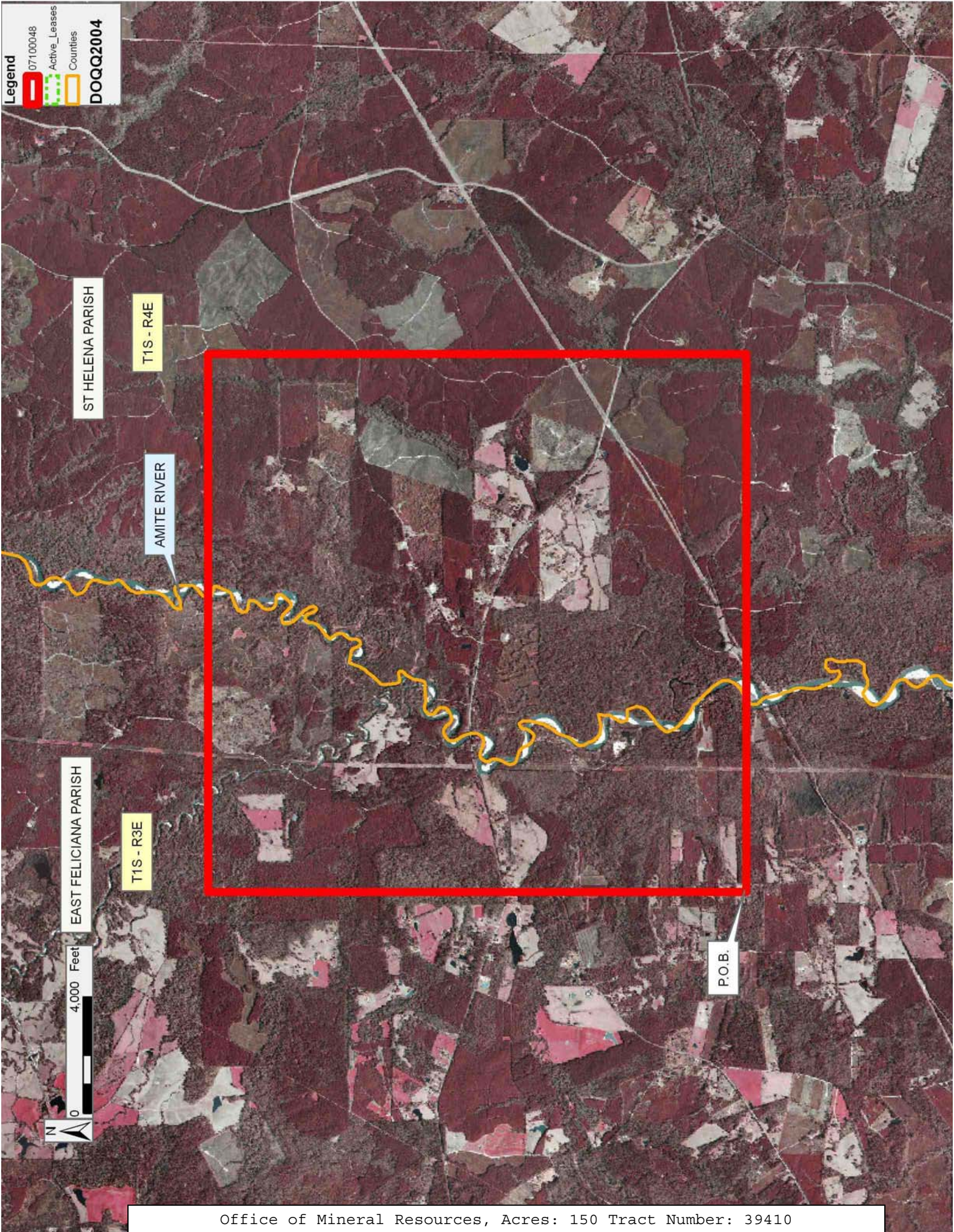
All of the lands now or formerly constituting the beds and bottoms of all water bodies of every nature and description as to which title is vested in the State of Louisiana, together with all islands arising therein and other lands formed by accretion or by reliction, where allowed by law, excepting tax adjudicated lands, and not presently under mineral lease on October 10, 2007, situated in East Feliciana and St. Helena Parishes, Louisiana, and more particularly described as follows: Beginning at a point having Coordinates of X = 2,143,115.00 and Y = 819,555.00; thence North 18,480.00 feet to a point having Coordinates of X = 2,143,115.00 and Y = 838,035.00; thence East 18,480.00 feet to a point having Coordinates of X = 2,161,595.00 and Y = 838,035.00; thence South 18,480.00 feet to a point having Coordinates of X = 2,161,595.00 and Y = 819,555.00; thence West 18,480.00 feet to the point of beginning, containing approximately **150 acres**, all as more particularly outlined on a plat on file in the Office of Mineral Resources, Department of Natural Resources. All bearings, distances and coordinates are based on Louisiana Coordinate System of 1927, (North or South Zone), where applicable.

NOTE: The above description of the Tract nominated for lease has been provided and corrected, where required, exclusively by the nomination party. Any mineral lease selected from this Tract and awarded by the Louisiana State Mineral Board shall be without warranty of any kind, either express, implied, or statutory, including, but not limited to, the implied warranties of merchantability and fitness for a particular purpose. Should the mineral lease awarded by the Louisiana State Mineral Board be subsequently modified, cancelled or abrogated due to the existence of conflicting leases, operating agreements, private claims or other future obligations or conditions which may affect all or any portion of the leased Tract, it shall not relieve the Lessee of the obligation to pay any bonus due thereon to the Louisiana State Mineral Board, nor shall the Louisiana State Mineral Board be obligated to refund any consideration paid by the Lessor prior to such modification, cancellation, or abrogation, including, but not limited to, bonuses, rentals and royalties.

Applicant: CHUCK KEETON

Bidder	Cash Payment	Price/ Acre	Rental	Oil	Gas	Other

Legend
07100048
Active_Leases
Counties
DOQQ2004



TRACT 39411 - Cameron Parish, Louisiana

All of the lands now or formerly constituting the beds and bottoms of all water bodies of every nature and description as to which title is vested in the State of Louisiana, together with all islands arising therein and other lands formed by accretion or by reliction, where allowed by law, excepting tax adjudicated lands, and not presently under mineral lease on October 10, 2007, situated in Cameron Parish, Louisiana, and more particularly described as follows: Beginning at the Northeast corner of State Lease No. 18810, also being a point on the South boundary of State Lease No. 18722 having Coordinates of X = 1,217,349.45 and Y = 464,491.90; thence East 5,355.09 feet along the South boundary of said State Lease No. 18722 to its Southeast corner, also being a point on the Western boundary of State Lease No. 18534 having Coordinates of X = 1,222,704.54 and Y = 464,491.90; thence along the boundary of said State Lease No. 18534 the following courses: South 83.80 feet; East 1,743.93 feet and South 1,244.10 feet to its most southern Southwest corner, also being a point on the North boundary of State Lease No. 19438 having Coordinates of X = 1,224,448.47 and Y = 463,164.00; thence along the boundary of said State Lease No. 19438 the following courses: West 4,854.47 feet to a point having Coordinates of X = 1,219,594.00 and Y = 463,164.00, South 5,406.00 feet to a point having Coordinates of X = 1,219,594.00 and Y = 457,758.00 and East 5,337.12 feet to a point having Coordinates of X = 1,224,931.12 and Y = 457,758.00; thence South 5,180.00 feet to a point having Coordinates of X = 1,224,931.12 and Y = 452,578.00; thence West 7,581.67 feet to a point having Coordinates of X = 1,217,349.45 and Y = 452,578.00; thence North 1,624.00 feet to a point having Coordinates of X = 1,217,349.45 and Y = 454,202.00; thence West 4,330.45 to a point having Coordinates of X = 1,213,019.00 and Y = 454,202.00; thence West 5,572.55 feet to a point on the Texas Louisiana boundary having Coordinates of X = 1,207,446.45 and Y = 454,202.00; thence along said Texas Louisiana boundary the following courses: North 24 degrees 40 minutes 19 seconds East 188.18 feet to a point having Coordinates of X = 1,207,525.00 and Y = 454,373.00; North 36 degrees 44 minutes 14 seconds East 3,970.61 feet to a point having Coordinates of X = 1,209,900.00 and Y = 457,555.00 and North 31 degrees 07 minutes 12 seconds East 2,805.79 feet to the Southwest corner of said State Lease No. 18959 having Coordinates of X = 1,211,350.12 and Y = 459,957.00; thence along the boundary of said State Lease No. 18959 the following courses: East 4,646.83 feet to its Southeast corner having Coordinates of X = 1,215,996.95 and Y = 459,957.00 and North 2,132.57 feet to Northeast corner of State Lease No. 18959, also being a point on the South boundary of State Lease No. 18810 having Coordinates of X = 1,215,996.95 and Y = 462,089.57; thence along the boundary of said State Lease No. 18810 the following courses: East 1,352.50 feet to a point having Coordinates of X = 1,217,349.45 and Y = 462,089.57 and North 2,402.33 feet to the point of beginning, containing approximately **2,499.85 acres, LESS AND EXCEPT** that portion thereof, if any, located West of the boundary line between the States of Texas and Louisiana as determined by the report of the Special Master and adjudicated by the Supreme Court of the United States in litigation styled **Texas v. Louisiana, et al No. 36**

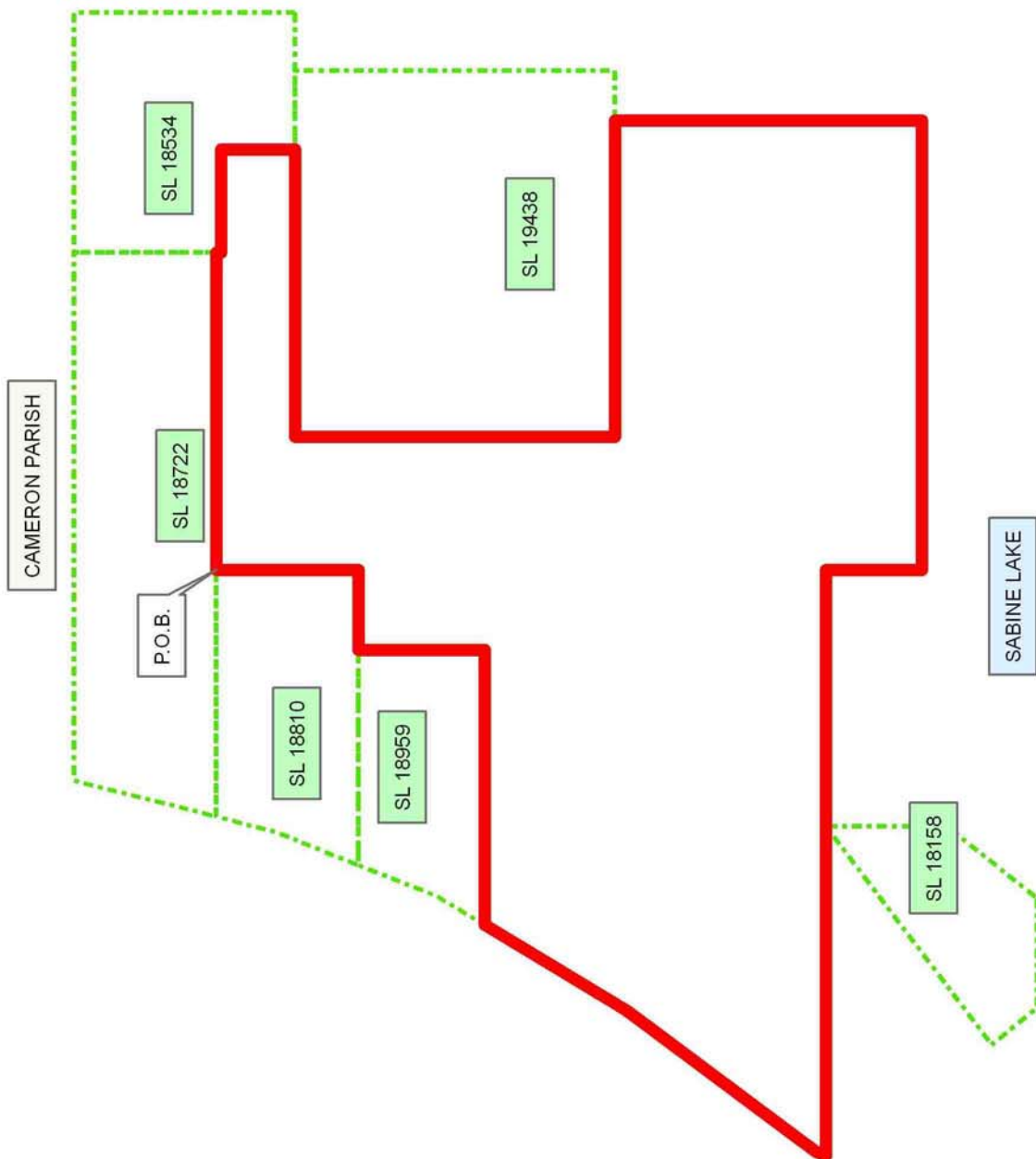
Original, or as otherwise approved by said court, all as more particularly outlined on a plat on file in the Office of Mineral Resources, Department of Natural Resources. All bearings, distances and coordinates are based on Louisiana Coordinate System of 1927, (North or South Zone), where applicable.

NOTE: The above description of the Tract nominated for lease has been provided and corrected, where required, exclusively by the nomination party. Any mineral lease selected from this Tract and awarded by the Louisiana State Mineral Board shall be without warranty of any kind, either express, implied, or statutory, including, but not limited to, the implied warranties of merchantability and fitness for a particular purpose. Should the mineral lease awarded by the Louisiana State Mineral Board be subsequently modified, cancelled or abrogated due to the existence of conflicting leases, operating agreements, private claims or other future obligations or conditions which may affect all or any portion of the leased Tract, it shall not relieve the Lessee of the obligation to pay any bonus due thereon to the Louisiana State Mineral Board, nor shall the Louisiana State Mineral Board be obligated to refund any consideration paid by the Lessor prior to such modification, cancellation, or abrogation, including, but not limited to, bonuses, rentals and royalties.

NOTE: The State of Louisiana does hereby reserve, and this lease shall be subject to, the imprescriptible right of surface use in the nature of a servitude in favor of the Department of Natural Resources, including its Offices and Commissions, for the sole purpose of implementing, constructing, servicing and maintaining approved coastal zone management and/or restoration projects. Utilization of any and all rights derived under this lease by the mineral lessee, its agents, successors or assigns, shall not interfere with nor hinder the reasonable surface use by the Department of Natural Resources, its Offices or Commissions, as herein above reserved.

Applicant: CUMMINGS LAND SERVICES

Bidder	Cash Payment	Price/ Acre	Rental	Oil	Gas	Other



TRACT 39412 - Plaquemines Parish, Louisiana

All of the lands now or formerly constituting the beds and bottoms of all water bodies of every nature and description as to which title is vested in the State of Louisiana, together with all islands arising therein and other lands formed by accretion or by reliction, where allowed by law, excepting tax adjudicated lands, and not presently under mineral lease on October 10, 2007, situated in Plaquemines Parish, Louisiana, and more particularly described as follows: All of the lands now or formerly constituting the beds and bottoms of all water bodies of every nature and description the title of which vests in the State of Louisiana, together with all islands arising therein and other lands formed by accretion or by reliction, where allowed by law, excepting tax and adjudicated lands, and not presently under mineral lease on October 10, 2007, situated in Plaquemines Parish, LA, and more particularly described as follows: Beginning at a point having Coordinates of X = 2,502,310.00 and Y = 343,959.95; thence South 3071.95 feet to a point having Coordinates of X = 2,502,310.00 and Y = 340,888.00; thence West 2640.00 feet to a point having Coordinates of X = 2,499,670.00 and Y = 340,888.00; thence North approximately 3018 feet to a point on the most Southerly line of State Lease No. 1212, as amended to a point having X = 2,499,670.00; thence Easterly approximately 1874 feet along the South line of said State Lease No. 1212 to the most Southerly Southeast corner of State Lease No. 1212; thence Easterly approximately 766 feet to the Point of Beginning, **LESS AND EXCEPT** that portion, if any, of State Lease No. 1212, as amended, that may fall within the above describe tract, and containing approximately **152 acres**, all as more particularly outlined on a plat on file in the Office of Mineral Resources, Department of Natural Resources. All bearings, distances and coordinates are based on Louisiana Coordinate System of 1927, (North or South Zone), where applicable.

NOTE: The above description of the Tract nominated for lease has been provided and corrected, where required, exclusively by the nomination party. Any mineral lease selected from this Tract and awarded by the Louisiana State Mineral Board shall be without warranty of any kind, either express, implied, or statutory, including, but not limited to, the implied warranties of merchantability and fitness for a particular purpose. Should the mineral lease awarded by the Louisiana State Mineral Board be subsequently modified, cancelled or abrogated due to the existence of conflicting leases, operating agreements, private claims or other future obligations or conditions which may affect all or any portion of the leased Tract, it shall not relieve the Lessee of the obligation to pay any bonus due thereon to the Louisiana State Mineral Board, nor shall the Louisiana State Mineral Board be obligated to refund any consideration paid by the Lessor prior to such modification, cancellation, or abrogation, including, but not limited to, bonuses, rentals and royalties.

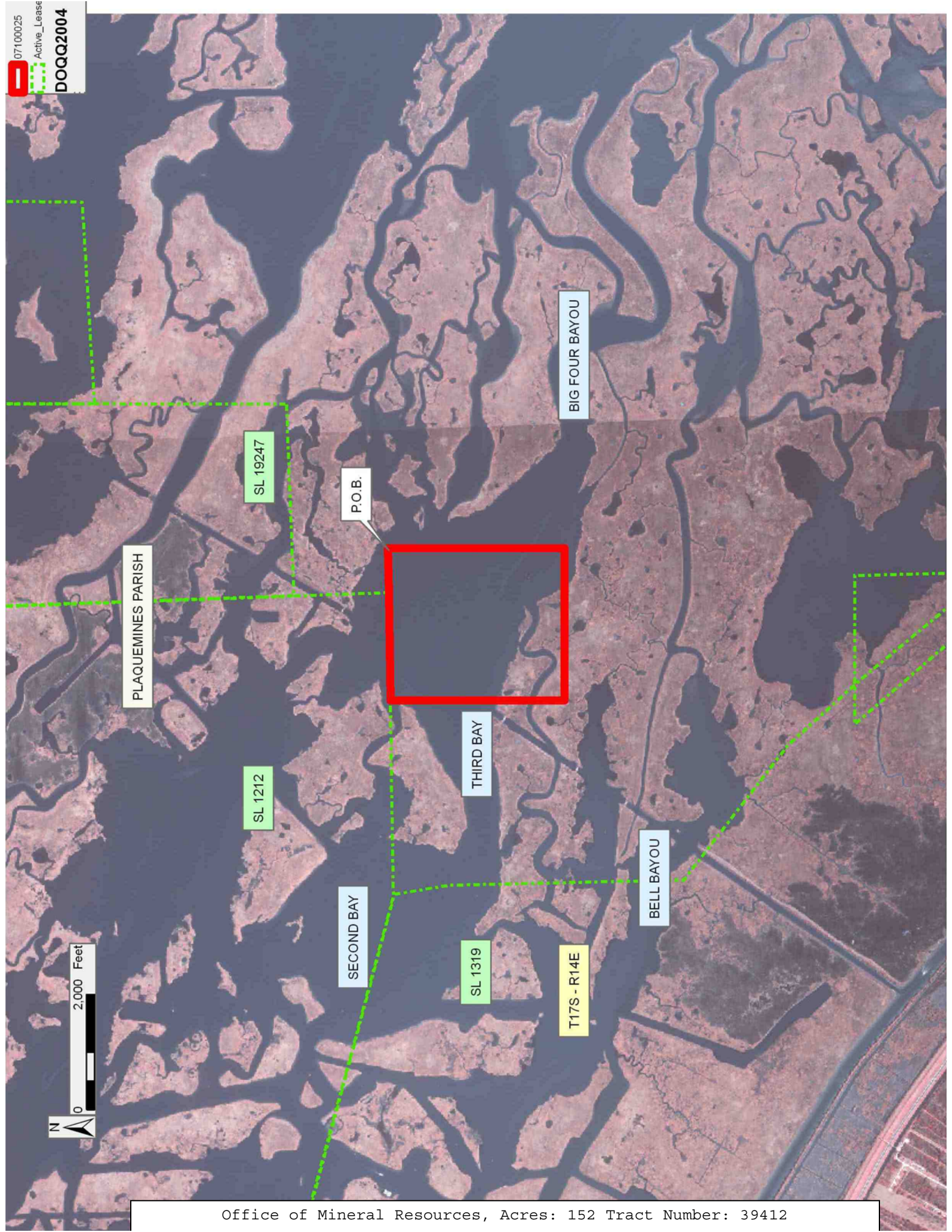
NOTE: The State of Louisiana does hereby reserve, and this lease shall be subject to, the imprescriptible right of surface use in the nature of a servitude in favor of the Department of Natural Resources, including its

Offices and Commissions, for the sole purpose of implementing, constructing, servicing and maintaining approved coastal zone management and/or restoration projects. Utilization of any and all rights derived under this lease by the mineral lessee, its agents, successors or assigns, shall not interfere with nor hinder the reasonable surface use by the Department of Natural Resources, its Offices or Commissions, as herein above reserved.

NOTE: The Department of Wildlife and Fisheries has designated certain areas in the coastal waters of the State of Louisiana as Oyster Seed Bed Areas. The exact location of those Seed Bed Areas must be obtained from the Department of Wildlife and Fisheries and any work done under a mineral lease from the State of Louisiana may necessarily be conducted in conformity with the rules and regulations promulgated by the said Department of Wildlife and Fisheries for Oyster Seed Bed Areas.

Applicant: MCGINTY-DURHAM, INC.

Bidder	Cash Payment	Price/ Acre	Rental	Oil	Gas	Other



TRACT 39413 - Plaquemines Parish, Louisiana

All of the lands now or formerly constituting the beds and bottoms of all water bodies of every nature and description as to which title is vested in the State of Louisiana, together with all islands arising therein and other lands formed by accretion or by reliction, where allowed by law, excepting tax adjudicated lands, and not presently under mineral lease on October 10, 2007, situated in Plaquemines Parish, Louisiana, and more particularly described as follows: All of the lands now or formerly constituting the beds and bottoms of all water bodies of every nature and description the title of which vests in the State of Louisiana, together with all islands arising therein and other lands formed by accretion or by reliction, where allowed by law, excepting tax and adjudicated lands, and not presently under mineral lease on October 10, 2007, situated in Plaquemines Parish, LA, and more particularly described as follows: Beginning at a point having Coordinates of X = 2,504,950.00 and Y = 344,040.67; thence South 3152.67 feet to a point having Coordinates of X = 2,504,950.00 and Y = 340,888.00; thence West 2640.00 feet to a point having Coordinates of X = 2,502,310.00 and Y = 340,888.00; thence North 3071.95 feet to a point having Coordinates of X = 2,502,310.00 and Y = 343,959.95; thence North 88 degrees 14 minutes 55 seconds East 2641.23 feet to the Point of Beginning and containing approximately **111 acres**, all as more particularly outlined on a plat on file in the Office of Mineral Resources, Department of Natural Resources. All bearings, distances and coordinates are based on Louisiana Coordinate System of 1927, (North or South Zone), where applicable.

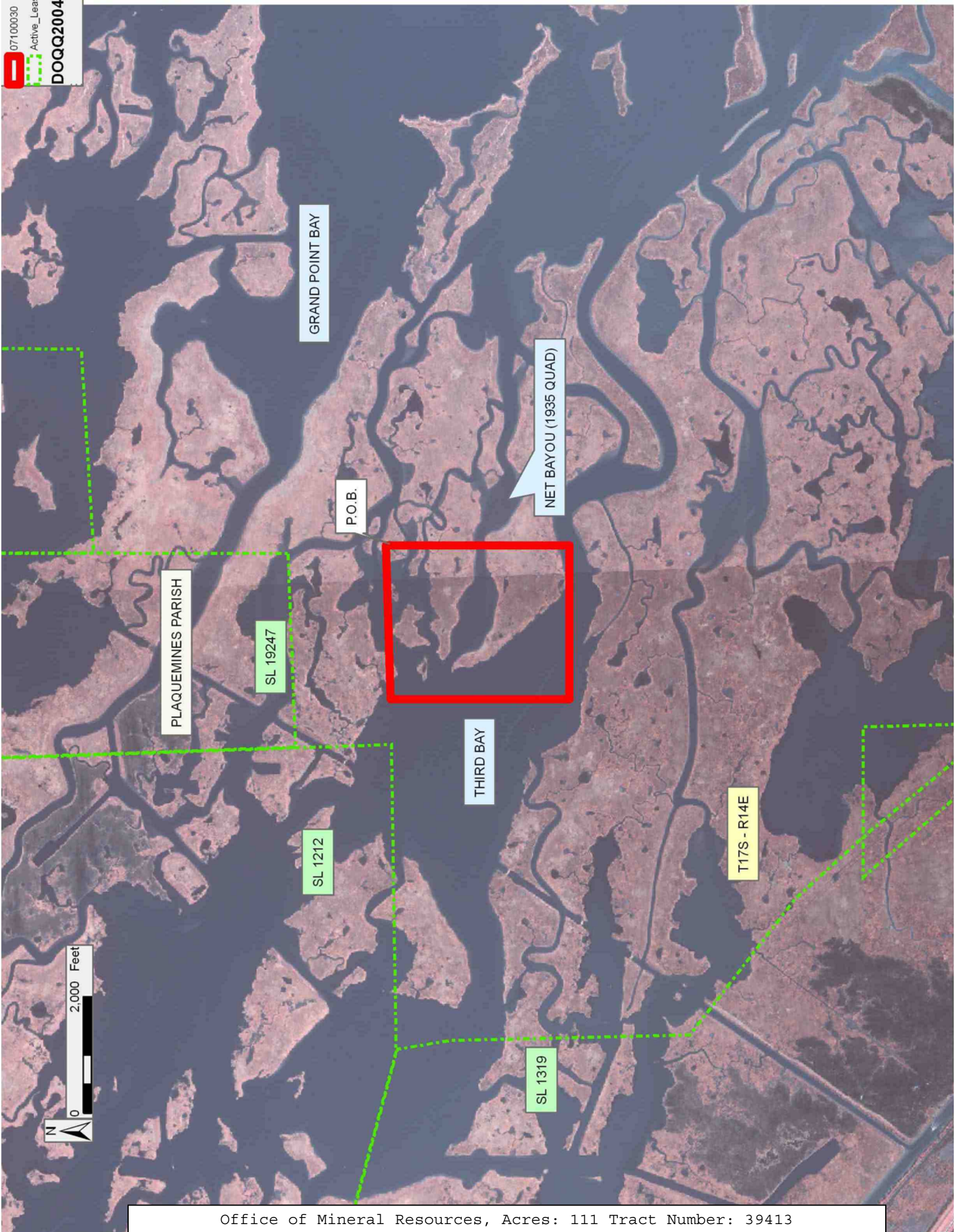
NOTE: The above description of the Tract nominated for lease has been provided and corrected, where required, exclusively by the nomination party. Any mineral lease selected from this Tract and awarded by the Louisiana State Mineral Board shall be without warranty of any kind, either express, implied, or statutory, including, but not limited to, the implied warranties of merchantability and fitness for a particular purpose. Should the mineral lease awarded by the Louisiana State Mineral Board be subsequently modified, cancelled or abrogated due to the existence of conflicting leases, operating agreements, private claims or other future obligations or conditions which may affect all or any portion of the leased Tract, it shall not relieve the Lessee of the obligation to pay any bonus due thereon to the Louisiana State Mineral Board, nor shall the Louisiana State Mineral Board be obligated to refund any consideration paid by the Lessor prior to such modification, cancellation, or abrogation, including, but not limited to, bonuses, rentals and royalties.

NOTE: The State of Louisiana does hereby reserve, and this lease shall be subject to, the imprescriptible right of surface use in the nature of a servitude in favor of the Department of Natural Resources, including its Offices and Commissions, for the sole purpose of implementing, constructing, servicing and maintaining approved coastal zone management and/or restoration projects. Utilization of any and all rights derived under this lease by the mineral lessee, its agents, successors or assigns,

shall not interfere with nor hinder the reasonable surface use by the Department of Natural Resources, its Offices or Commissions, as herein above reserved.

Applicant: MCGINTY-DURHAM, INC.

Bidder	Cash Payment	Price/ Acre	Rental	Oil	Gas	Other



TRACT 39414 - Plaquemines Parish, Louisiana

All of the lands now or formerly constituting the beds and bottoms of all water bodies of every nature and description as to which title is vested in the State of Louisiana, together with all islands arising therein and other lands formed by accretion or by reliction, where allowed by law, excepting tax adjudicated lands, and not presently under mineral lease on October 10, 2007, situated in Plaquemines Parish, Louisiana, and more particularly described as follows: All of the lands now or formerly constituting the beds and bottoms of all water bodies of every nature and description the title of which vests in the State of Louisiana, together with all islands arising therein and other lands formed by accretion or by reliction, where allowed by law, excepting tax and adjudicated lands, and not presently under mineral lease on October 10, 2007, situated in Plaquemines Parish, LA, and more particularly described as follows: Beginning at a point having Coordinates of X = 2,507,590.00 and Y = 344,121.40; thence South 3233.40 feet to a point having Coordinates of X = 2,507,590.00 and Y = 340,888.00; thence West 2640.00 feet to a point having Coordinates of X = 2,504,950.00 and Y = 340,888.00; thence North 3152.67 feet to a point having Coordinates of X = 2,504,950.00 and Y = 344,040.67; thence North 88 degrees 14 minutes 55 seconds East 2641.23 feet to the Point of Beginning and containing approximately **57 acres**, all as more particularly outlined on a plat on file in the Office of Mineral Resources, Department of Natural Resources. All bearings, distances and coordinates are based on Louisiana Coordinate System of 1927, (North or South Zone), where applicable.

NOTE: The above description of the Tract nominated for lease has been provided and corrected, where required, exclusively by the nomination party. Any mineral lease selected from this Tract and awarded by the Louisiana State Mineral Board shall be without warranty of any kind, either express, implied, or statutory, including, but not limited to, the implied warranties of merchantability and fitness for a particular purpose. Should the mineral lease awarded by the Louisiana State Mineral Board be subsequently modified, cancelled or abrogated due to the existence of conflicting leases, operating agreements, private claims or other future obligations or conditions which may affect all or any portion of the leased Tract, it shall not relieve the Lessee of the obligation to pay any bonus due thereon to the Louisiana State Mineral Board, nor shall the Louisiana State Mineral Board be obligated to refund any consideration paid by the Lessor prior to such modification, cancellation, or abrogation, including, but not limited to, bonuses, rentals and royalties.

NOTE: The State of Louisiana does hereby reserve, and this lease shall be subject to, the imprescriptible right of surface use in the nature of a servitude in favor of the Department of Natural Resources, including its Offices and Commissions, for the sole purpose of implementing, constructing, servicing and maintaining approved coastal zone management and/or restoration projects. Utilization of any and all rights derived under this lease by the mineral lessee, its agents, successors or assigns,

shall not interfere with nor hinder the reasonable surface use by the Department of Natural Resources, its Offices or Commissions, as herein above reserved.

NOTE: The Department of Wildlife and Fisheries has designated certain areas in the coastal waters of the State of Louisiana as Oyster Seed Bed Areas. The exact location of those Seed Bed Areas must be obtained from the Department of Wildlife and Fisheries and any work done under a mineral lease from the State of Louisiana may necessarily be conducted in conformity with the rules and regulations promulgated by the said Department of Wildlife and Fisheries for Oyster Seed Bed Areas.

Applicant: MCGINTY-DURHAM, INC.

Bidder	Cash Payment	Price/ Acre	Rental	Oil	Gas	Other



TRACT 39415 - Plaquemines Parish, Louisiana

All of the lands now or formerly constituting the beds and bottoms of all water bodies of every nature and description as to which title is vested in the State of Louisiana, together with all islands arising therein and other lands formed by accretion or by reliction, where allowed by law, excepting tax adjudicated lands, and not presently under mineral lease on October 10, 2007, situated in Plaquemines Parish, Louisiana, and more particularly described as follows: All of the lands now or formerly constituting the beds and bottoms of all water bodies of every nature and description the title of which vests in the State of Louisiana, together with all islands arising therein and other lands formed by accretion or by reliction, where allowed by law, excepting tax and adjudicated lands, and not presently under mineral lease on October 10, 2007, situated in Plaquemines Parish, LA, and more particularly described as follows: Beginning at a point having Coordinates of X = 2,502,310.00 and Y = 340,888.00; thence South 2,640.00 feet to a point having Coordinates of X = 2,502,310.00 and Y = 338,248.00; thence West 2,640.00 feet to a point with Coordinates of X = 2,499,670.00 and Y = 338,248.00; thence North 2,640.00 feet to a point with Coordinates of X = 2,499,670.00 and Y = 340,888.00; thence East 2,640.00 feet to the Point of Beginning and containing approximately **23 acres**, all as more particularly outlined on a plat on file in the Office of Mineral Resources, Department of Natural Resources. All bearings, distances and coordinates are based on Louisiana Coordinate System of 1927, (North or South Zone), where applicable.

NOTE: The above description of the Tract nominated for lease has been provided and corrected, where required, exclusively by the nomination party. Any mineral lease selected from this Tract and awarded by the Louisiana State Mineral Board shall be without warranty of any kind, either express, implied, or statutory, including, but not limited to, the implied warranties of merchantability and fitness for a particular purpose. Should the mineral lease awarded by the Louisiana State Mineral Board be subsequently modified, cancelled or abrogated due to the existence of conflicting leases, operating agreements, private claims or other future obligations or conditions which may affect all or any portion of the leased Tract, it shall not relieve the Lessee of the obligation to pay any bonus due thereon to the Louisiana State Mineral Board, nor shall the Louisiana State Mineral Board be obligated to refund any consideration paid by the Lessor prior to such modification, cancellation, or abrogation, including, but not limited to, bonuses, rentals and royalties.

NOTE: The State of Louisiana does hereby reserve, and this lease shall be subject to, the imprescriptible right of surface use in the nature of a servitude in favor of the Department of Natural Resources, including its Offices and Commissions, for the sole purpose of implementing, constructing, servicing and maintaining approved coastal zone management and/or restoration projects. Utilization of any and all rights derived under this lease by the mineral lessee, its agents, successors or assigns, shall not interfere with nor hinder the reasonable surface use by the

Department of Natural Resources, its Offices or Commissions, as herein above reserved.

NOTE: The Department of Wildlife and Fisheries has designated certain areas in the coastal waters of the State of Louisiana as Oyster Seed Bed Areas. The exact location of those Seed Bed Areas must be obtained from the Department of Wildlife and Fisheries and any work done under a mineral lease from the State of Louisiana may necessarily be conducted in conformity with the rules and regulations promulgated by the said Department of Wildlife and Fisheries for Oyster Seed Bed Areas.

Applicant: MCGINTY-DURHAM, INC.

Bidder	Cash Payment	Price/ Acre	Rental	Oil	Gas	Other



TRACT 39416 - Plaquemines Parish, Louisiana

All of the lands now or formerly constituting the beds and bottoms of all water bodies of every nature and description as to which title is vested in the State of Louisiana, together with all islands arising therein and other lands formed by accretion or by reliction, where allowed by law, excepting tax adjudicated lands, and not presently under mineral lease on October 10, 2007, situated in Plaquemines Parish, Louisiana, and more particularly described as follows: All of the lands now or formerly constituting the beds and bottoms of all water bodies of every nature and description the title of which vests in the State of Louisiana, together with all islands arising therein and other lands formed by accretion or by reliction, where allowed by law, excepting tax and adjudicated lands, and not presently under mineral lease on October 10, 2007, situated in Plaquemines Parish, LA, and more particularly described as follows: Beginning at a point having Coordinates of X = 2,504,950.00 and Y = 340,888.00; thence South 2,640.00 feet to a point having Coordinates of X = 2,504,950.00 and Y = 338,248.00; thence West 2,640.00 feet to a point having Coordinates of X = 2,502,310.00 and Y = 338,248.00; thence North 2,640.00 feet to a point having Coordinates of X = 2,502,310.00 and Y = 340,888.00; thence East 2,640.00 feet to the Point of Beginning and containing approximately **45 acres**, all as more particularly outlined on a plat on file in the Office of Mineral Resources, Department of Natural Resources. All bearings, distances and coordinates are based on Louisiana Coordinate System of 1927, (North or South Zone), where applicable.

NOTE: The above description of the Tract nominated for lease has been provided and corrected, where required, exclusively by the nomination party. Any mineral lease selected from this Tract and awarded by the Louisiana State Mineral Board shall be without warranty of any kind, either express, implied, or statutory, including, but not limited to, the implied warranties of merchantability and fitness for a particular purpose. Should the mineral lease awarded by the Louisiana State Mineral Board be subsequently modified, cancelled or abrogated due to the existence of conflicting leases, operating agreements, private claims or other future obligations or conditions which may affect all or any portion of the leased Tract, it shall not relieve the Lessee of the obligation to pay any bonus due thereon to the Louisiana State Mineral Board, nor shall the Louisiana State Mineral Board be obligated to refund any consideration paid by the Lessor prior to such modification, cancellation, or abrogation, including, but not limited to, bonuses, rentals and royalties.

NOTE: The State of Louisiana does hereby reserve, and this lease shall be subject to, the imprescriptible right of surface use in the nature of a servitude in favor of the Department of Natural Resources, including its Offices and Commissions, for the sole purpose of implementing, constructing, servicing and maintaining approved coastal zone management and/or restoration projects. Utilization of any and all rights derived under this lease by the mineral lessee, its agents, successors or assigns, shall not interfere with nor hinder the reasonable surface use by the

Department of Natural Resources, its Offices or Commissions, as herein above reserved.

NOTE: The Department of Wildlife and Fisheries has designated certain areas in the coastal waters of the State of Louisiana as Oyster Seed Bed Areas. The exact location of those Seed Bed Areas must be obtained from the Department of Wildlife and Fisheries and any work done under a mineral lease from the State of Louisiana may necessarily be conducted in conformity with the rules and regulations promulgated by the said Department of Wildlife and Fisheries for Oyster Seed Bed Areas.

Applicant: MCGINTY-DURHAM, INC.

Bidder	Cash Payment	Price/ Acre	Rental	Oil	Gas	Other

PLAQUEMINES PARISH

P.O.B.

T17S - R14E

2,000 Feet

TRACT 39417 - Plaquemines Parish, Louisiana

All of the lands now or formerly constituting the beds and bottoms of all water bodies of every nature and description as to which title is vested in the State of Louisiana, together with all islands arising therein and other lands formed by accretion or by reliction, where allowed by law, excepting tax adjudicated lands, and not presently under mineral lease on October 10, 2007, situated in Plaquemines Parish, Louisiana, and more particularly described as follows: All of the lands now or formerly constituting the beds and bottoms of all water bodies of every nature and description the title of which vests in the State of Louisiana, together with all islands arising therein and other lands formed by accretion or by reliction, where allowed by law, excepting tax and adjudicated lands, and not presently under mineral lease on October 10, 2007, situated in Plaquemines Parish, LA, and more particularly described as follows: Beginning at a point having Coordinates of X = 2,507,590.00 and Y = 340,888.00; thence South 2640.00 feet to a point having Coordinates of X = 2,507,590.00 and Y = 338,248.00; thence West 2640.00 feet to a point having Coordinates of X = 2,504,950.00 and Y = 338,248.00; thence North 2640.00 feet to a point having Coordinates of X = 2,504,950.00 and Y = 340,888.00; thence East 2640.00 feet to the Point of Beginning and containing approximately **56 acres**, all as more particularly outlined on a plat on file in the Office of Mineral Resources, Department of Natural Resources. All bearings, distances and coordinates are based on Louisiana Coordinate System of 1927, (North or South Zone), where applicable.

NOTE: The above description of the Tract nominated for lease has been provided and corrected, where required, exclusively by the nomination party. Any mineral lease selected from this Tract and awarded by the Louisiana State Mineral Board shall be without warranty of any kind, either express, implied, or statutory, including, but not limited to, the implied warranties of merchantability and fitness for a particular purpose. Should the mineral lease awarded by the Louisiana State Mineral Board be subsequently modified, cancelled or abrogated due to the existence of conflicting leases, operating agreements, private claims or other future obligations or conditions which may affect all or any portion of the leased Tract, it shall not relieve the Lessee of the obligation to pay any bonus due thereon to the Louisiana State Mineral Board, nor shall the Louisiana State Mineral Board be obligated to refund any consideration paid by the Lessor prior to such modification, cancellation, or abrogation, including, but not limited to, bonuses, rentals and royalties.

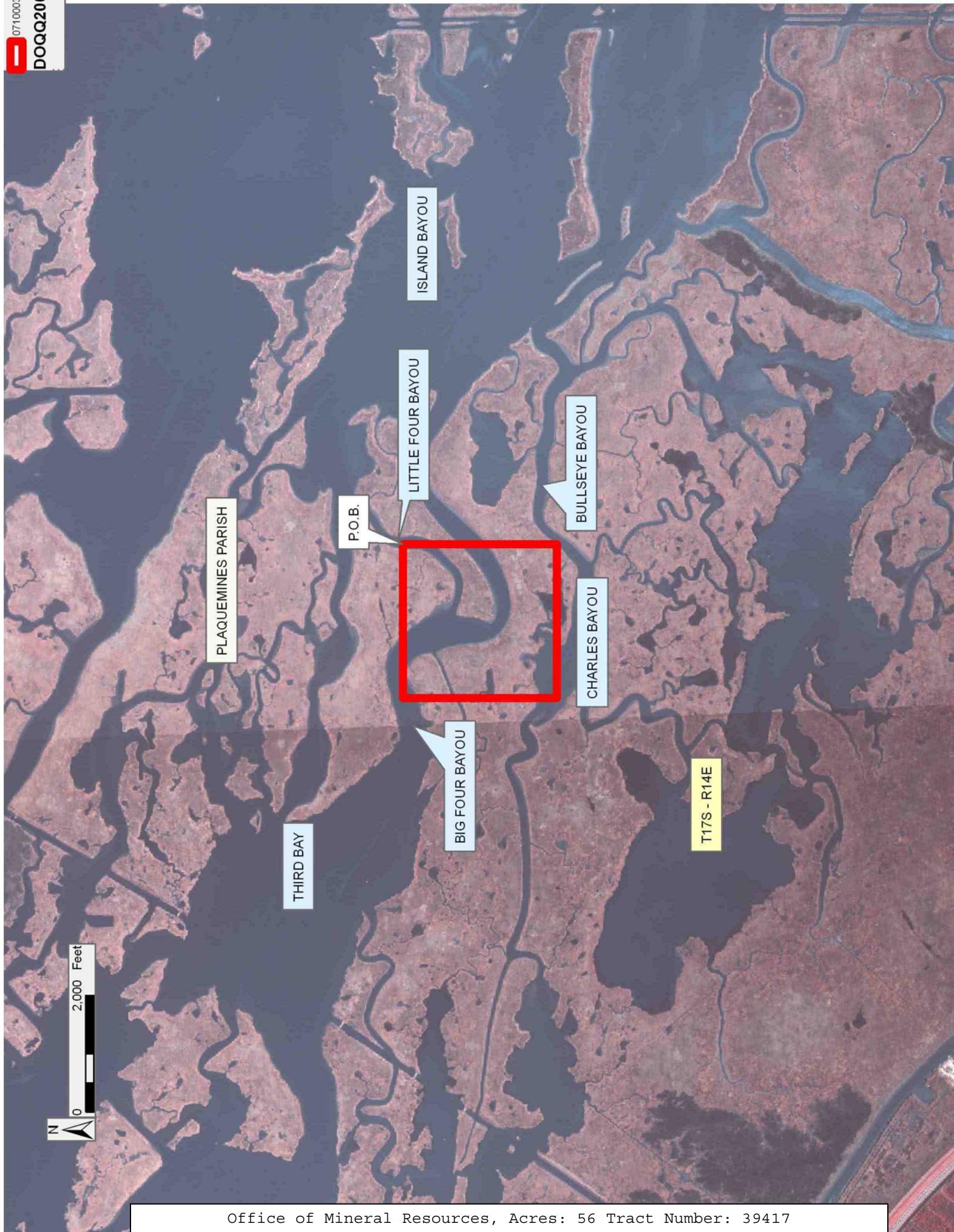
NOTE: The State of Louisiana does hereby reserve, and this lease shall be subject to, the imprescriptible right of surface use in the nature of a servitude in favor of the Department of Natural Resources, including its Offices and Commissions, for the sole purpose of implementing, constructing, servicing and maintaining approved coastal zone management and/or restoration projects. Utilization of any and all rights derived under this lease by the mineral lessee, its agents, successors or assigns, shall not interfere with nor hinder the reasonable surface use by the

Department of Natural Resources, its Offices or Commissions, as herein above reserved.

NOTE: The Department of Wildlife and Fisheries has designated certain areas in the coastal waters of the State of Louisiana as Oyster Seed Bed Areas. The exact location of those Seed Bed Areas must be obtained from the Department of Wildlife and Fisheries and any work done under a mineral lease from the State of Louisiana may necessarily be conducted in conformity with the rules and regulations promulgated by the said Department of Wildlife and Fisheries for Oyster Seed Bed Areas.

Applicant: MCGINTY-DURHAM, INC.

Bidder	Cash Payment	Price/ Acre	Rental	Oil	Gas	Other



TRACT 39418 - Plaquemines Parish, Louisiana

All of the lands now or formerly constituting the beds and bottoms of all water bodies of every nature and description as to which title is vested in the State of Louisiana, together with all islands arising therein and other lands formed by accretion or by reliction, where allowed by law, excepting tax adjudicated lands, and not presently under mineral lease on October 10, 2007, situated in Plaquemines Parish, Louisiana, and more particularly described as follows: All of the lands now or formerly constituting the beds and bottoms of all water bodies of every nature and description the title of which vests in the State of Louisiana, together with all islands arising therein and other lands formed by accretion or by reliction, where allowed by law, excepting tax and adjudicated lands, and not presently under mineral lease on October 10, 2007, situated in Plaquemines Parish, LA, and more particularly described as follows: Beginning at a point having Coordinates of X = 2,504,950.00 and Y = 338,248.00; thence South 2,640.00 feet to a point having Coordinates of X = 2,504,950.00 and Y = 335,608.00; thence West 2,640.00 feet to a point having Coordinates of X = 2,502,310.00 and Y = 335,608.00; thence North 2,640.00 feet to a point having Coordinates of X = 2,502,310.00 and Y = 338,248.00; thence East 2,640.00 feet to the Point of Beginning and containing approximately **52 acres**, all as more particularly outlined on a plat on file in the Office of Mineral Resources, Department of Natural Resources. All bearings, distances and coordinates are based on Louisiana Coordinate System of 1927, (North or South Zone), where applicable.

NOTE: The above description of the Tract nominated for lease has been provided and corrected, where required, exclusively by the nomination party. Any mineral lease selected from this Tract and awarded by the Louisiana State Mineral Board shall be without warranty of any kind, either express, implied, or statutory, including, but not limited to, the implied warranties of merchantability and fitness for a particular purpose. Should the mineral lease awarded by the Louisiana State Mineral Board be subsequently modified, cancelled or abrogated due to the existence of conflicting leases, operating agreements, private claims or other future obligations or conditions which may affect all or any portion of the leased Tract, it shall not relieve the Lessee of the obligation to pay any bonus due thereon to the Louisiana State Mineral Board, nor shall the Louisiana State Mineral Board be obligated to refund any consideration paid by the Lessor prior to such modification, cancellation, or abrogation, including, but not limited to, bonuses, rentals and royalties.

NOTE: The State of Louisiana does hereby reserve, and this lease shall be subject to, the imprescriptible right of surface use in the nature of a servitude in favor of the Department of Natural Resources, including its Offices and Commissions, for the sole purpose of implementing, constructing, servicing and maintaining approved coastal zone management and/or restoration projects. Utilization of any and all rights derived under this lease by the mineral lessee, its agents, successors or assigns, shall not interfere with nor hinder the reasonable surface use by the

Department of Natural Resources, its Offices or Commissions, as herein above reserved.

NOTE: The Department of Wildlife and Fisheries has designated certain areas in the coastal waters of the State of Louisiana as Oyster Seed Bed Areas. The exact location of those Seed Bed Areas must be obtained from the Department of Wildlife and Fisheries and any work done under a mineral lease from the State of Louisiana may necessarily be conducted in conformity with the rules and regulations promulgated by the said Department of Wildlife and Fisheries for Oyster Seed Bed Areas.

Applicant: MCGINTY-DURHAM, INC.

Bidder	Cash Payment	Price/ Acre	Rental	Oil	Gas	Other

