

TRACT 38622 - Portion of Block 22, Main Pass Area, Revised, Plaquemines Parish, Louisiana

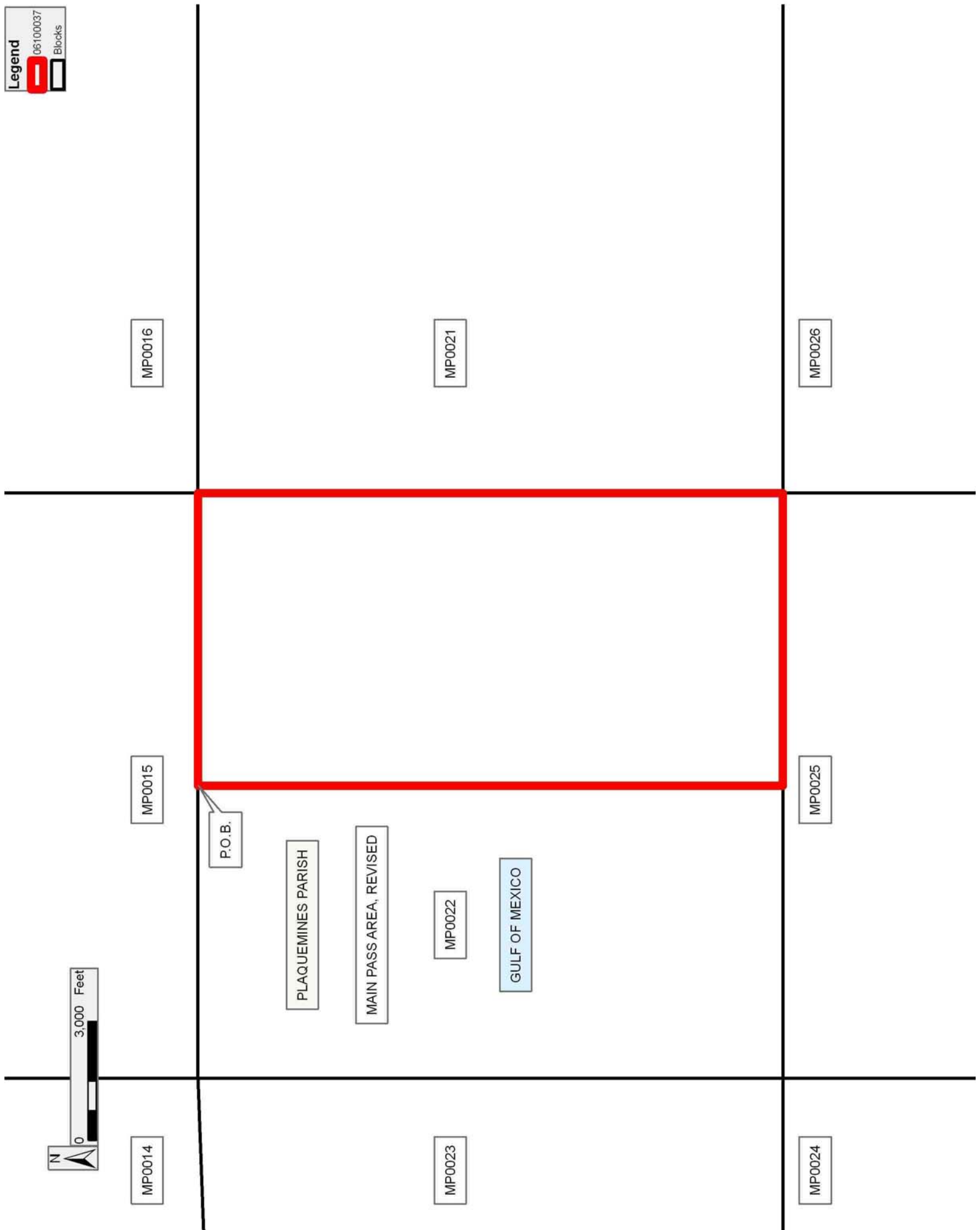
All of the lands now or formerly constituting the beds and bottoms of all water bodies of every nature and description the title of which vests in the State of Louisiana, together with all islands arising therein and other lands formed by accretion or by reliction, where allowed by law, excepting tax adjudicated lands, and not presently under mineral lease and cross hatched on October 11, 2006, situated in Plaquemines Parish, Louisiana, and more particularly described as follows: Beginning at a point on the North line of Block 22, Main Pass Area, Revised, having Coordinates of X = 2,613,225.00 and Y = 337,080.00; thence East 7,375.00 feet along the North line of said Block 22 to its Northeast corner having Coordinates of X = 2,620,600.00 and Y = 337,080.00; thence South 14,750.00 feet along the East line of said Block 22 to its Southeast corner having Coordinates of X = 2,620,600.00 and Y = 322,330.00; thence West 7,375.00 feet along the South line of said Block 22 to a point having Coordinates of X = 2,613,225.00 and Y = 322,330.00; thence North 14,750.00 feet to the point of beginning, containing approximately **2,497.27 acres**, all as more particularly outlined on a plat on file in the Office of Mineral Resources, Department of Natural Resources. All bearings, distances and coordinates are based on Louisiana Coordinate System of 1927, (North or South Zone), where applicable.

NOTE: The above description of the Tract nominated for lease has been provided and corrected, where required, exclusively by the nomination party. Any mineral lease selected from this Tract and awarded by the Louisiana State Mineral Board shall be without warranty of any kind, either express, implied, or statutory, including, but not limited to, the implied warranties of merchantability and fitness for a particular purpose. Should the mineral lease awarded by the Louisiana State Mineral Board be subsequently modified, cancelled or abrogated due to the existence of conflicting leases, operating agreements, private claims or other future obligations or conditions which may affect all or any portion of the leased Tract, it shall not relieve the Lessee of the obligation to pay any bonus due thereon to the Louisiana State Mineral Board, nor shall the Louisiana State Mineral Board be obligated to refund any consideration paid by the Lessor prior to such modification, cancellation, or abrogation, including, but not limited to, bonuses, rentals and royalties.

NOTE: The State of Louisiana does hereby reserve, and this lease shall be subject to, the imprescriptible right of surface use in the nature of a servitude in favor of the Department of Natural Resources, including its Offices and Commissions, for the sole purpose of implementing, constructing, servicing and maintaining approved coastal zone management and/or restoration projects. Utilization of any and all rights derived under this lease by the mineral lessee, its agents, successors or assigns, shall not interfere with nor hinder the reasonable surface use by the Department of Natural Resources, its Offices or Commissions, as herein above reserved.

Applicant: ENERGY PARTNERS, INC.

Bidder	Cash Payment	Price/Acre	Rental	Oil	Gas	Other



TRACT 38623 - Iberia Parish, Louisiana

All of the lands now or formerly constituting the beds and bottoms of all water bodies of every nature and description the title of which vests in the State of Louisiana, together with all islands arising therein and other lands formed by accretion or by reliction, where allowed by law, excepting tax adjudicated lands, and not presently under mineral lease and cross hatched on October 11, 2006, situated in Iberia Parish, Louisiana, and more particularly described as follows: Beginning at a point having Coordinates of X = 1,871,000.00 and Y = 346,000.00; thence South 4,025.00 feet to a point having Coordinates of X = 1,871,000.00 and Y = 341,975.00; thence West 5,965.84 feet to a point having Coordinates of X = 1,865,034.16 and Y = 341,975.00; thence South 3,475.00 feet to a point having Coordinates of X = 1,865,034.16 and Y = 338,500.00; thence West 10,534.16 feet to a point having Coordinates of X = 1,854,500.00 and Y = 338,500.00; thence North approximately 5,618 feet to a point on the Southern boundary of State Lease No. 340 having an X Coordinate of 1,854,500.00; thence Easterly along the Southern boundary of said State Lease No. 340 approximately 11,379 feet to its Southeast corner; thence Northerly along the East boundary of said State Lease No. 340 approximately 2,012 feet to a point having a Y Coordinate of 346,000.00; thence leaving the East boundary of said State Lease No. 340, East approximately 5,091 feet to the point of beginning, **LESS AND EXCEPT** any portion of State Lease No. 340 which may lie within the above described tract, containing approximately **1,856 acres**, all as more particularly outlined on a plat on file in the Office of Mineral Resources, Department of Natural Resources. All bearings, distances and coordinates are based on Louisiana Coordinate System of 1927, (North or South Zone), where applicable.

NOTE: The above description of the Tract nominated for lease has been provided and corrected, where required, exclusively by the nomination party. Any mineral lease selected from this Tract and awarded by the Louisiana State Mineral Board shall be without warranty of any kind, either express, implied, or statutory, including, but not limited to, the implied warranties of merchantability and fitness for a particular purpose. Should the mineral lease awarded by the Louisiana State Mineral Board be subsequently modified, cancelled or abrogated due to the existence of conflicting leases, operating agreements, private claims or other future obligations or conditions which may affect all or any portion of the leased Tract, it shall not relieve the Lessee of the obligation to pay any bonus due thereon to the Louisiana State Mineral Board, nor shall the Louisiana State Mineral Board be obligated to refund any consideration paid by the Lessor prior to such modification, cancellation, or abrogation, including, but not limited to, bonuses, rentals and royalties.

NOTE: The State of Louisiana does hereby reserve, and this lease shall be subject to, the imprescriptible right of surface use in the nature of a servitude in favor of the Department of Natural Resources, including its Offices and Commissions, for the sole purpose of implementing,

constructing, servicing and maintaining approved coastal zone management and/or restoration projects. Utilization of any and all rights derived under this lease by the mineral lessee, its agents, successors or assigns, shall not interfere with nor hinder the reasonable surface use by the Department of Natural Resources, its Offices or Commissions, as herein above reserved.

NOTE: The Department of Wildlife and Fisheries has designated certain areas in the coastal waters of the State of Louisiana as Oyster Seed Bed Areas. The exact location of those Seed Bed Areas must be obtained from the Department of Wildlife and Fisheries and any work done under a mineral lease from the State of Louisiana may necessarily be conducted in conformity with the rules and regulations promulgated by the said Department of Wildlife and Fisheries for Oyster Seed Bed Areas.

NOTE: All or a portion of this Tract lies within one nautical mile of the boundary of the Russell Sage or Marsh Island Wildlife Refuge and Game Preserve. Any activities connected with this lease conducted within this Tract which may pose potential environmental impacts to the said Wildlife Refuge and Game Preserve should be coordinated with the Louisiana Department of Wildlife and Fisheries.

Applicant: CYPRESS ENERGY CORPORATION

Bidder	Cash Payment	Price/Acre	Rental	Oil	Gas	Other

Legend

- 06100017
- Wildlife
- SDE_BUS_83_ACTIVE_LEASES

P.O.B.

IBERIA PARISH

VERMILION BAY

SL 340

MARSH ISLAND WILDLIFE REFUGE



TRACT 38624 - Iberia Parish, Louisiana

All of the lands now or formerly constituting the beds and bottoms of all water bodies of every nature and description the title of which vests in the State of Louisiana, together with all islands arising therein and other lands formed by accretion or by reliction, where allowed by law, excepting tax adjudicated lands, and not presently under mineral lease and cross hatched on October 11, 2006, situated in Iberia Parish, Louisiana, and more particularly described as follows: Beginning at the Northwest corner of State Lease No. 1706 having Coordinates of X = 1,865,034.16 and Y = 336,896.45; thence North 5,078.55 feet to a point having Coordinates of X = 1,865,034.16 and Y = 341,975.00; thence East 13,116.97 feet to a point on the Western boundary of State Lease No. 1703 having Coordinates of X = 1,878,151.13 and Y = 341,975.00; thence along the boundary of said State Lease No. 1703 the following courses and distances: South 00 degrees 14 minutes 09 seconds West 2,843.81 feet, North 79 degrees 48 minutes 24 seconds West 558.23 feet, North 82 degrees 10 minutes 35 seconds West 1,322.31 feet, North 85 degrees 58 minutes 00 seconds West 1,563.87 feet, North 89 degrees 23 minutes 26 seconds West 940.05 feet, South 85 degrees 27 minutes 44 seconds West 1,263.96 feet, South 83 degrees 05 minutes 20 seconds West 997.25 feet, South 74 degrees 08 minutes 53 seconds West 842.02 feet, South 67 degrees 06 minutes 01 seconds West 1,259.25 feet, South 59 degrees 57 minutes 13 seconds West 1,178.35 feet, South 55 degrees 08 minutes 44 seconds West 1,364.84 feet, and South 49 degrees 53 minutes 20 seconds West 514.91 feet to its Southwest corner and a point on the North line of said State Lease No. 1706 having Coordinates of X = 1,867,026.19 and Y = 336,888.26; thence North 89 degrees 45 minutes 52 seconds West 1,992.05 feet on the North boundary of said State Lease No. 1706 to the point of beginning, containing approximately **1,000.24 acres**, all as more particularly outlined on a plat on file in the Office of Mineral Resources, Department of Natural Resources. All bearings, distances and coordinates are based on Louisiana Coordinate System of 1927, (North or South Zone), where applicable.

NOTE: The above description of the Tract nominated for lease has been provided and corrected, where required, exclusively by the nomination party. Any mineral lease selected from this Tract and awarded by the Louisiana State Mineral Board shall be without warranty of any kind, either express, implied, or statutory, including, but not limited to, the implied warranties of merchantability and fitness for a particular purpose. Should the mineral lease awarded by the Louisiana State Mineral Board be subsequently modified, cancelled or abrogated due to the existence of conflicting leases, operating agreements, private claims or other future obligations or conditions which may affect all or any portion of the leased Tract, it shall not relieve the Lessee of the obligation to pay any bonus due thereon to the Louisiana State Mineral Board, nor shall the Louisiana State Mineral Board be obligated to refund any consideration paid by the Lessor prior to such modification, cancellation, or abrogation, including, but not limited to, bonuses, rentals and royalties.

NOTE: The State of Louisiana does hereby reserve, and this lease shall be subject to, the imprescriptible right of surface use in the nature of a servitude in favor of the Department of Natural Resources, including its Offices and Commissions, for the sole purpose of implementing, constructing, servicing and maintaining approved coastal zone management and/or restoration projects. Utilization of any and all rights derived under this lease by the mineral lessee, its agents, successors or assigns, shall not interfere with nor hinder the reasonable surface use by the Department of Natural Resources, its Offices or Commissions, as herein above reserved.

NOTE: The Department of Wildlife and Fisheries has designated certain areas in the coastal waters of the State of Louisiana as Oyster Seed Bed Areas. The exact location of those Seed Bed Areas must be obtained from the Department of Wildlife and Fisheries and any work done under a mineral lease from the State of Louisiana may necessarily be conducted in conformity with the rules and regulations promulgated by the said Department of Wildlife and Fisheries for Oyster Seed Bed Areas.

NOTE: All or a portion of this Tract lies within one nautical mile of the boundary of the Russell Sage or Marsh Island Wildlife Refuge and Game Preserve. Any activities connected with this lease conducted within this Tract which may pose potential environmental impacts to the said Wildlife Refuge and Game Preserve should be coordinated with the Louisiana Department of Wildlife and Fisheries.

Applicant: CYPRESS ENERGY CORPORATION

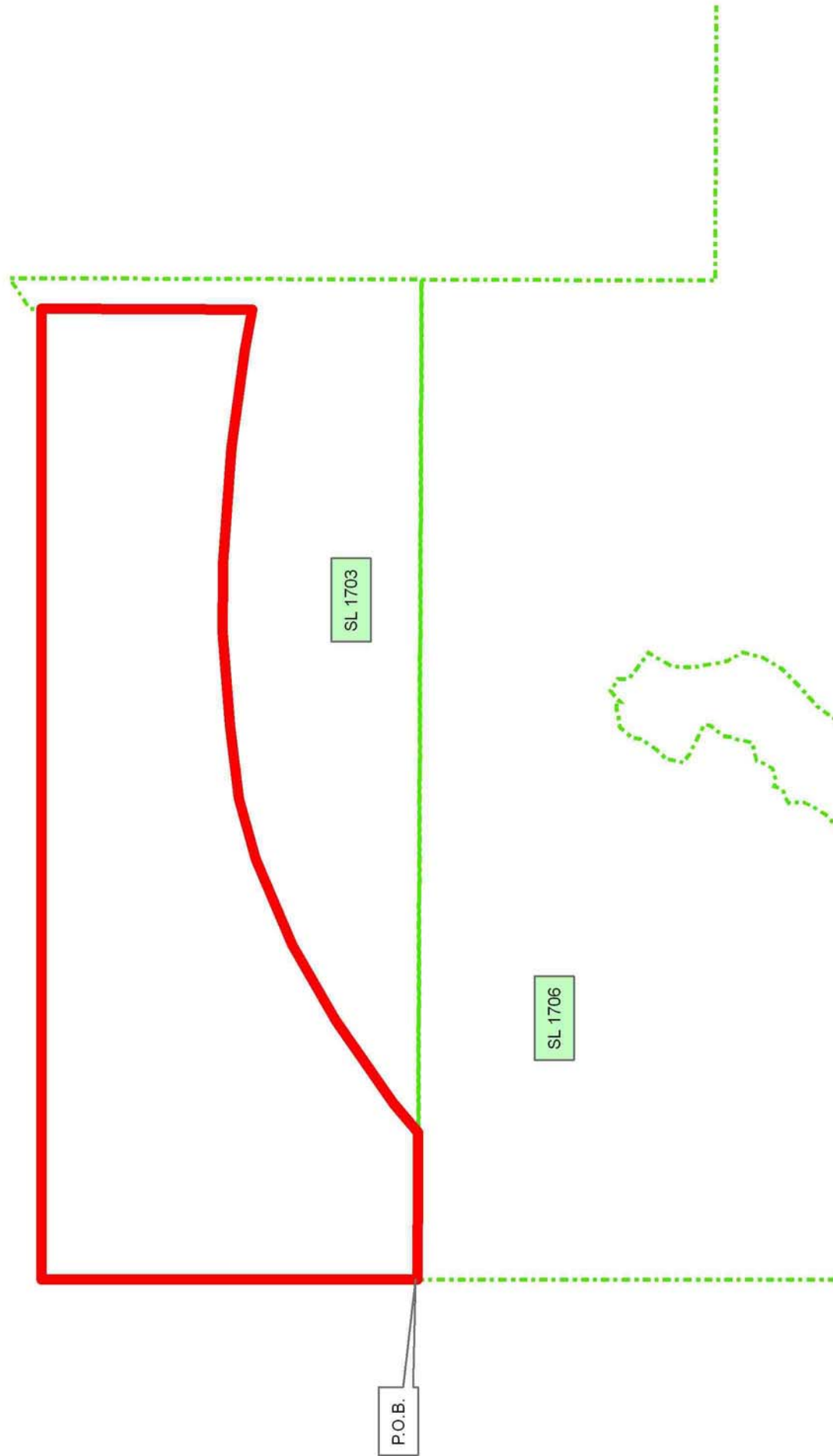
Bidder	Cash Payment	Price/Acre	Rental	Oil	Gas	Other

Legend
06100014
Active_Leases



IBERIA PARISH

VERMILION BAY



SL 1703

SL 1706

P.O.B.

TRACT 38625 - Iberia Parish, Louisiana

All of the lands now or formerly constituting the beds and bottoms of all water bodies of every nature and description the title of which vests in the State of Louisiana, together with all islands arising therein and other lands formed by accretion or by reliction, where allowed by law, excepting tax adjudicated lands, and not presently under mineral lease and cross hatched on October 11, 2006, situated in Iberia Parish, Louisiana, and more particularly described as follows: Beginning at the interior corner of State Lease No. 11282 having Coordinates of X = 1,888,990.27 and Y = 341,630.00; thence South 00 degrees 14 minutes 06 seconds West 3,554.03 feet along the boundary line of said State Lease No. 11282 to its Southern most Southwest corner having Coordinates of X = 1,888,975.69 and Y = 338,076.00; thence South 5,218.93 feet to a point having Coordinates of X = 1,888,975.69 and Y = 332,857.07; thence West 6,587.84 feet to the Southernmost Northeast corner of State Lease No. 1706 as amended, having Coordinates of X = 1,882,387.85 and Y = 332,857.07; thence along the boundary of said State Lease No. 1706 the following courses and distances: North 89 degrees 45 minutes 52 seconds West 3,866.00 feet, and North 00 degrees 14 minutes 08 seconds East 3,967.97 feet to its Northernmost Northeast corner and the Southeast corner of State Lease No. 1703 as amended, having Coordinates of X = 1,878,538.20 and Y = 336,840.90; thence North 00 degrees 13 minutes 53 seconds East 5,134.14 feet to a point having Coordinates of X = 1,878,558.92 and Y = 341,975.00; thence East 7,865.65 feet to a point on the Western boundary of State Lease No. 11279 having Coordinates of X = 1,886,424.57 and Y = 341,975.00; thence along the boundary of said State Lease No. 11279 the following courses and distances: South 00 degrees 03 minutes 51 seconds West 334.45 feet, and South 89 degrees 45 minutes 58 seconds East 2,425.82 feet to its Southeast corner and the Northernmost Southwest corner said State Lease No. 11282 a point having Coordinates of X = 1,888,850.00 and Y = 341,630.65; thence South 89 degrees 44 minutes 04 seconds East 140.27 feet along the boundary of said State Lease No. 11282 to the point of beginning, containing approximately **2,164.29 acres**, all as more particularly outlined on a plat on file in the Office of Mineral Resources, Department of Natural Resources. All bearings, distances and coordinates are based on Louisiana Coordinate System of 1927, (North or South Zone), where applicable.

NOTE: The above description of the Tract nominated for lease has been provided and corrected, where required, exclusively by the nomination party. Any mineral lease selected from this Tract and awarded by the Louisiana State Mineral Board shall be without warranty of any kind, either express, implied, or statutory, including, but not limited to, the implied warranties of merchantability and fitness for a particular purpose. Should the mineral lease awarded by the Louisiana State Mineral Board be subsequently modified, cancelled or abrogated due to the existence of conflicting leases, operating agreements, private claims or other future obligations or conditions which may affect all or any portion of the leased Tract, it shall not relieve the Lessee of the obligation to pay any bonus due thereon to the Louisiana State Mineral Board, nor shall

the Louisiana State Mineral Board be obligated to refund any consideration paid by the Lessor prior to such modification, cancellation, or abrogation, including, but not limited to, bonuses, rentals and royalties.

NOTE: The State of Louisiana does hereby reserve, and this lease shall be subject to, the imprescriptible right of surface use in the nature of a servitude in favor of the Department of Natural Resources, including its Offices and Commissions, for the sole purpose of implementing, constructing, servicing and maintaining approved coastal zone management and/or restoration projects. Utilization of any and all rights derived under this lease by the mineral lessee, its agents, successors or assigns, shall not interfere with nor hinder the reasonable surface use by the Department of Natural Resources, its Offices or Commissions, as herein above reserved.

NOTE: The Department of Wildlife and Fisheries has designated certain areas in the coastal waters of the State of Louisiana as Oyster Seed Bed Areas. The exact location of those Seed Bed Areas must be obtained from the Department of Wildlife and Fisheries and any work done under a mineral lease from the State of Louisiana may necessarily be conducted in conformity with the rules and regulations promulgated by the said Department of Wildlife and Fisheries for Oyster Seed Bed Areas.

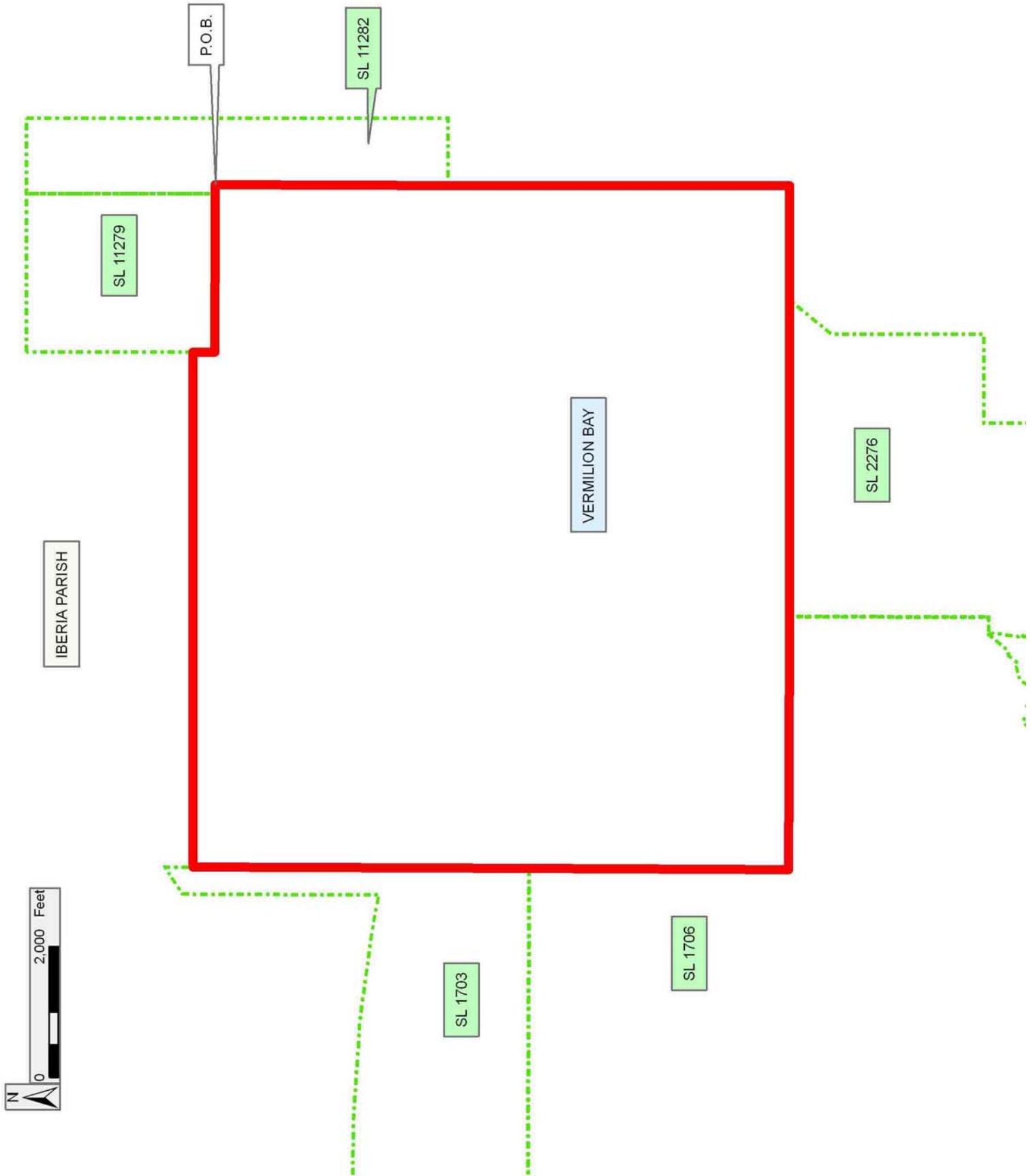
NOTE: All or a portion of this Tract lies within one nautical mile of the boundary of the Russell Sage or Marsh Island Wildlife Refuge and Game Preserve. Any activities connected with this lease conducted within this Tract which may pose potential environmental impacts to the said Wildlife Refuge and Game Preserve should be coordinated with the Louisiana Department of Wildlife and Fisheries.

Applicant: CYPRESS ENERGY CORPORATION

Bidder	Cash Payment	Price/Acre	Rental	Oil	Gas	Other

Legend

06100013
Active_Leases



TRACT 38626 - Portion of Block 24, Main Pass Area, Revised, Plaquemines Parish, Louisiana

All of the lands now or formerly constituting the beds and bottoms of all water bodies of every nature and description the title of which vests in the State of Louisiana, together with all islands arising therein and other lands formed by accretion or by reliction, where allowed by law, excepting tax adjudicated lands, and not presently under mineral lease and cross hatched on October 11, 2006, situated in Plaquemines Parish, Louisiana, and more particularly described as follows: Beginning at a point on the East line of Block 24, Main Pass Area, Revised, having Coordinates of X = 2,605,850.00 and Y = 314,955.00; thence West 6,297.31 feet to a point on the boundary of State Lease No. 2410, as amended, having Coordinates of X = 2,599,552.69 and Y = 314,955.00; thence along the boundary of said State Lease No. 2410 the following courses: Northwesterly along an arc to the right, having a radius of 1,375.00 feet, to a point having Coordinates of X = 2,599,442.03 and Y = 315,009.87; Northwesterly along an arc to the right, having a radius of 520.00 feet, to a point having Coordinates of X = 2,599,165.63 and Y = 315,258.52; Northwesterly along an arc to the left, having a radius of 655.00 feet, to a point having Coordinates of X = 2,598,476.96 and Y = 315,577.15; South 79 degrees 02 minutes 27 seconds West 741.45 feet to a point having Coordinates of X = 2,597,749.03 and Y = 315,436.19; South 78 degrees 33 minutes 58 seconds West 472.71 feet to a point having Coordinates of X = 2,597,285.71 and Y = 315,342.48; Northwesterly along an arc to the right having a radius of 245.36 feet, to a point having Coordinates of X = 2,596,991.30 and Y = 315,511.47; Northwesterly along an arc to the left having a radius of 354.32 feet, to a point having Coordinates of X = 2,596,818.28 and Y = 315,707.54; North 64 degrees 27 minutes 53 seconds West 427.19 feet to a point having Coordinates of X = 2,596,432.82 and Y = 315,891.69 and Northwesterly along an arc to the right having a radius of 4,200.00 feet, to a point on the West line of said Block 24 having Coordinates of X = 2,594,885.68 and Y = 316,752.72; thence Northeasterly approximately 6,045 feet along the West line of said Block 24 to its Northwest corner having a Coordinate of Y = 322,330.00; thence East approximately 8,633 feet along the North line of said Block 24 to its Northeast corner having Coordinates of X = 2,605,850.00 and Y = 322,330.00; thence South 7,375.00 feet to the point of beginning, containing approximately **1,625 acres**, all as more particularly outlined on a plat on file in the Office of Mineral Resources, Department of Natural Resources. All bearings, distances and coordinates are based on Louisiana Coordinate System of 1927, (North or South Zone), where applicable.

NOTE: The above description of the Tract nominated for lease has been provided and corrected, where required, exclusively by the nomination party. Any mineral lease selected from this Tract and awarded by the Louisiana State Mineral Board shall be without warranty of any kind, either express, implied, or statutory, including, but not limited to, the implied warranties of merchantability and fitness for a particular purpose. Should the mineral lease awarded by the Louisiana State Mineral

Board be subsequently modified, cancelled or abrogated due to the existence of conflicting leases, operating agreements, private claims or other future obligations or conditions which may affect all or any portion of the leased Tract, it shall not relieve the Lessee of the obligation to pay any bonus due thereon to the Louisiana State Mineral Board, nor shall the Louisiana State Mineral Board be obligated to refund any consideration paid by the Lessor prior to such modification, cancellation, or abrogation, including, but not limited to, bonuses, rentals and royalties.

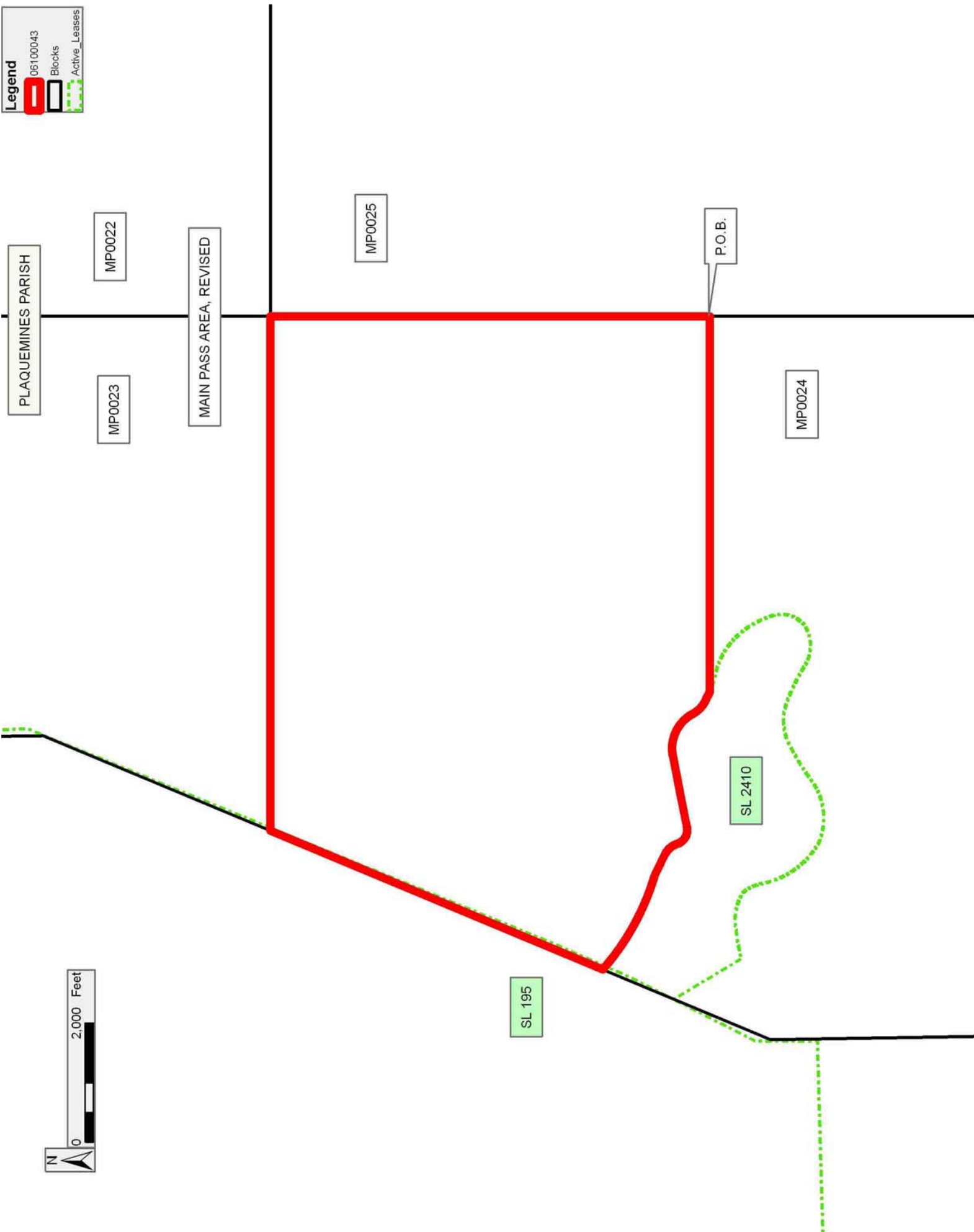
NOTE: The State of Louisiana does hereby reserve, and this lease shall be subject to, the imprescriptible right of surface use in the nature of a servitude in favor of the Department of Natural Resources, including its Offices and Commissions, for the sole purpose of implementing, constructing, servicing and maintaining approved coastal zone management and/or restoration projects. Utilization of any and all rights derived under this lease by the mineral lessee, its agents, successors or assigns, shall not interfere with nor hinder the reasonable surface use by the Department of Natural Resources, its Offices or Commissions, as herein above reserved.

Applicant: ENERGY PARTNERS, INC.

Bidder	Cash Payment	Price/Acre	Rental	Oil	Gas	Other

Legend

- 06100043
- Blocks
- Active_Leases



TRACT 38627 - Portion of Block 25, Main Pass Area, Revised, Plaquemines Parish, Louisiana

All of the lands now or formerly constituting the beds and bottoms of all water bodies of every nature and description the title of which vests in the State of Louisiana, together with all islands arising therein and other lands formed by accretion or by reliction, where allowed by law, excepting tax adjudicated lands, and not presently under mineral lease and cross hatched on October 11, 2006, situated in Plaquemines Parish, Louisiana, and more particularly described as follows: Beginning at the Northwest corner of Block 25, Main Pass Area, Revised, having Coordinates of X = 2,605,850.00 and Y = 322,330.00; thence East 2,200.00 feet along the North line of said Block 25 to the Northwest corner of State Lease No. 16432 having Coordinates of X = 2,608,050.00 and Y = 322,330.00; thence South 28 degrees 28 minutes 27 seconds East 1,646.67 feet along the West boundary of said State Lease No. 16432 to the Northeast corner of State Lease No. 18009 having Coordinates of X = 2,608,835.07 and Y = 320,882.52; thence along the boundary of said State Lease No. 18009 the following courses: South 73 degrees 18 minutes 03 seconds West 2,375.25 feet to its Northwest corner having Coordinates of X = 2,606,560.00 and Y = 320,200.00; South 18 degrees 04 minutes 02 seconds East 1,725.06 feet to a point having Coordinates of X = 2,607,095.00 and Y = 318,560.00; South 55 degrees 33 minutes 40 seconds East 2,546.29 feet to a point having Coordinates of X = 2,609,195.00 and Y = 317,120.00; South 26 degrees 44 minutes 20 seconds East 2,211.48 feet to its Southwest corner having Coordinates of X = 2,610,190.00 and Y = 315,145.00 and North 68 degrees 36 minutes 40 seconds East 1,556.30 feet to its Southeast corner, also being a point on the West boundary of State Lease No. 16432, having Coordinates of X = 2,611,639.11 and Y = 315,712.58; thence along the boundary of said State Lease No. 16432 the following courses: South 28 degrees 28 minutes 27 seconds East 861.83 feet to a point having Coordinates of X = 2,612,050.00 and Y = 314,955.00; North 775.00 feet to a point having Coordinates of X = 2,612,050.00 and Y = 315,730.00 and East 1,175.00 feet to a point having Coordinates of X = 2,613,225.00 and Y = 315,730.00; thence South 8,150.00 feet to a point on the South line of said Block 25 having Coordinates of X = 2,613,225.00 and Y = 307,580.00; thence West 7,375.00 feet along the South line of said Block 25 to its Southwest corner having Coordinates of X = 2,605,850.00 and Y = 307,580.00; thence North 14,750.00 feet along the West line of said Block 25 to the point of beginning, **LESS AND EXCEPT** any portion of State Lease No. 16692, as amended, and State Lease No. 16819, as amended, containing 216.78 acres collectively and being described as follows: Beginning at the Northwest corner of State Lease No. 16819, as amended, having Coordinates of X = 2,608,208.49 and Y = 315,086.85; thence East 750.00 feet along the North boundary of said State Lease No. 16819 to a point having Coordinates of X = 2,608,958.49 and Y = 315,086.85; thence South 28 degrees 28 minutes 27 seconds East 150.00 feet along the North boundary of said State Lease No. 16819 to a point having Coordinates of X = 2,609,030.00 and Y = 314,955.00; thence East 2,000.00 feet along the North boundary of said State Lease No. 16819 and State Lease No. 16692, as amended, to its

Northeast corner having Coordinates of X = 2,611,030.00 and Y = 314,955.00; thence South 3,864.62 feet along the East boundary of said State Lease No. 16692 to its Southeast corner having Coordinates of X = 2,611,030.00 and Y = 311,090.38; thence North 77 degrees 00 minutes 19 seconds West 1,621.53 feet along the South boundary of said State Lease No. 16692 to its Southwest corner having Coordinates of X = 2,609,450.00 and Y = 311,455.00; thence North 300.00 feet along the West boundary of said State Lease No. 16692 to the Southeast corner of said State Lease No. 16819 having Coordinates of X = 2,609,450.00 and Y = 311,755.00; thence North 59 degrees 39 minutes 01 seconds West 1,438.67 feet along the South boundary of said State Lease No. 16819 to its Southwest corner having Coordinates of X = 2,608,208.49 and Y = 312,481.92; thence North 2,604.93 feet along the West boundary of said State Lease No. 16819 to the point of beginning, the nominated area contains approximately **1,493.01 acres**, all as more particularly outlined on a plat on file in the Office of Mineral Resources, Department of Natural Resources. All bearings, distances and coordinates are based on Louisiana Coordinate System of 1927, (North or South Zone), where applicable.

NOTE: The above description of the Tract nominated for lease has been provided and corrected, where required, exclusively by the nomination party. Any mineral lease selected from this Tract and awarded by the Louisiana State Mineral Board shall be without warranty of any kind, either express, implied, or statutory, including, but not limited to, the implied warranties of merchantability and fitness for a particular purpose. Should the mineral lease awarded by the Louisiana State Mineral Board be subsequently modified, cancelled or abrogated due to the existence of conflicting leases, operating agreements, private claims or other future obligations or conditions which may affect all or any portion of the leased Tract, it shall not relieve the Lessee of the obligation to pay any bonus due thereon to the Louisiana State Mineral Board, nor shall the Louisiana State Mineral Board be obligated to refund any consideration paid by the Lessor prior to such modification, cancellation, or abrogation, including, but not limited to, bonuses, rentals and royalties.

NOTE: The State of Louisiana does hereby reserve, and this lease shall be subject to, the imprescriptible right of surface use in the nature of a servitude in favor of the Department of Natural Resources, including its Offices and Commissions, for the sole purpose of implementing, constructing, servicing and maintaining approved coastal zone management and/or restoration projects. Utilization of any and all rights derived under this lease by the mineral lessee, its agents, successors or assigns, shall not interfere with nor hinder the reasonable surface use by the Department of Natural Resources, its Offices or Commissions, as herein above reserved.

Applicant: ENERGY PARTNERS, INC.

Bidder	Cash Payment	Price/Acre	Rental	Oil	Gas	Other

Legend

- 06100039
- Blocks
- Active_Leases

MP0021

MP0026

MP0031

MP0022

MP0025

MP0032

SL 16432

SL 18009

SL 16692

SL 16819

SL 18473

P.O.B.

PLAQUEMINES PARISH

MAIN PASS AREA, REVISED

MP0024

GULF OF MEXICO

MP0033

MP0023



TRACT 38628 - Portion of Block 24, Main Pass Area, Revised, Plaquemines Parish, Louisiana

All of the lands now or formerly constituting the beds and bottoms of all water bodies of every nature and description the title of which vests in the State of Louisiana, together with all islands arising therein and other lands formed by accretion or by reliction, where allowed by law, excepting tax adjudicated lands, and not presently under mineral lease and cross hatched on October 11, 2006, situated in Plaquemines Parish, Louisiana, and more particularly described as follows: Beginning at a point on the East line of Block 24, Main Pass Area, Revised, having Coordinates of X = 2,605,850.00 and Y = 314,955.00; thence South 7,375.00 feet along the East line of said Block 24 to its Southeast corner having Coordinates of X = 2,605,850.00 and Y = 307,580.00; thence West approximately 12,031 feet to a point on the West line of said Block 24 having a Coordinate of Y = 307,580.00; thence along the West line of said Block 24 the following courses: Northwesterly approximately 6,357 feet to a point and Northeasterly approximately 1,755 feet to a point on the boundary of State Lease No. 2410, as amended, having Coordinates of X = 2,594,385.24 and Y = 315,555.27; thence along the boundary of said State Lease No. 2410 the following courses: South 30 degrees 53 minutes 49 seconds East 1,313.28 feet to a point having Coordinates of X = 2,595,059.59 and Y = 314,428.37; Northeasterly along an arc to the right, having a radius of 3,550.04 feet, to a point having Coordinates of X = 2,595,624.28 and Y = 314,525.13; Southeasterly along an arc to the right, having a radius of 808.95 feet, to a point having Coordinates of X = 2,596,187.55 and Y = 314,393.30; Southeasterly along an arc to the right, having a radius of 690.21 feet, to a point having Coordinates of X = 2,596,325.62 and Y = 314,109.55; Southeasterly along an arc to the left, having a radius of 1,408.49 feet, to a point having Coordinates of X = 2,597,019.37 and Y = 313,126.34; Northeasterly along an arc to the left, having a radius of 1,071.10, to a point having Coordinates of X = 2,598,032.90 and Y = 313,235.79; Northeasterly along an arc to the right, having a radius of 4,683.26 feet, to a point having Coordinates of X = 2,598,739.93 and Y = 313,663.63; Northeasterly along an arc to the right, having a radius of 1,070.00 feet, to a point having Coordinates of X = 2,599,156.64 and Y = 313,719.83; Southeasterly along an arc to the right, having a radius of 1,500.00 feet, to a point having Coordinates of X = 2,599,557.56 and Y = 313,587.82; Southeasterly along an arc to the right, having a radius of 3,000.00 feet, to a point having Coordinates of X = 2,599,987.79 and Y = 313,360.06; Southeasterly along an arc to the left, having a radius of 643.86 feet, to a point having Coordinates of X = 2,600,647.85 and Y = 313,359.03; Northeasterly along an arc to the left, having a radius of 505.42 feet, to a point having Coordinates of X = 2,600,802.19 and Y = 313,962.34; Northwesterly along an arc to the left, having a radius of 1,500.00 feet, to a point having Coordinates of X = 2,600,415.46 and Y = 314,564.04; Northwesterly along an arc to the left, having a radius of 1,250.00 feet, to a point having Coordinates of X = 2,599,854.69 and Y = 314,861.53 and Northwesterly along an to the right, having a radius of 1,375.00 feet, to a point having Coordinates of X =

2,599,552.69 and Y = 314,955.00; thence East 6,297.31 feet to the point of beginning, containing approximately **1,879 acres**, all as more particularly outlined on a plat on file in the Office of Mineral Resources, Department of Natural Resources. All bearings, distances and coordinates are based on Louisiana Coordinate System of 1927, (North or South Zone), where applicable.

NOTE: The above description of the Tract nominated for lease has been provided and corrected, where required, exclusively by the nomination party. Any mineral lease selected from this Tract and awarded by the Louisiana State Mineral Board shall be without warranty of any kind, either express, implied, or statutory, including, but not limited to, the implied warranties of merchantability and fitness for a particular purpose. Should the mineral lease awarded by the Louisiana State Mineral Board be subsequently modified, cancelled or abrogated due to the existence of conflicting leases, operating agreements, private claims or other future obligations or conditions which may affect all or any portion of the leased Tract, it shall not relieve the Lessee of the obligation to pay any bonus due thereon to the Louisiana State Mineral Board, nor shall the Louisiana State Mineral Board be obligated to refund any consideration paid by the Lessor prior to such modification, cancellation, or abrogation, including, but not limited to, bonuses, rentals and royalties.

NOTE: The State of Louisiana does hereby reserve, and this lease shall be subject to, the imprescriptible right of surface use in the nature of a servitude in favor of the Department of Natural Resources, including its Offices and Commissions, for the sole purpose of implementing, constructing, servicing and maintaining approved coastal zone management and/or restoration projects. Utilization of any and all rights derived under this lease by the mineral lessee, its agents, successors or assigns, shall not interfere with nor hinder the reasonable surface use by the Department of Natural Resources, its Offices or Commissions, as herein above reserved.

Applicant: ENERGY PARTNERS, INC.

Bidder	Cash Payment	Price/Acre	Rental	Oil	Gas	Other

Legend

- 06100042
- Blocks
- Active_Leases



TRACT 38629 - Portion of Block 33, Main Pass Area, Revised, Plaquemines Parish, Louisiana

All of the lands now or formerly constituting the beds and bottoms of all water bodies of every nature and description the title of which vests in the State of Louisiana, together with all islands arising therein and other lands formed by accretion or by reliction, where allowed by law, excepting tax adjudicated lands, and not presently under mineral lease and cross hatched on October 11, 2006, situated in Plaquemines Parish, Louisiana, and more particularly described as follows: Beginning at a point on the East line of Block 33, Main Pass Area, Revised, having Coordinates of X = 2,605,850.00 and Y = 300,205.00; thence West approximately 7,096 feet to a point on the West line of said Block 33 having a Coordinate of Y = 300,205.00; thence Northeasterly approximately 1,742 feet along the West line of said Block 33 to a point; thence Northwesterly approximately 7,536 feet along the West line of said Block 33 to a point; thence Northerly approximately 427 feet along the West line of said Block 33 to a point on the North line of said Block 33 having a Coordinate of Y = 307,580.00; thence East approximately 12,031 feet along the North line of said Block 33 to its Northeast corner having Coordinates of X = 2,605,850.00 and Y = 307,580.00; thence South 7,375.00 feet along the East line of said Block 33 to the point of beginning, containing approximately **1,511 acres**, all as more particularly outlined on a plat on file in the Office of Mineral Resources, Department of Natural Resources. All bearings, distances and coordinates are based on Louisiana Coordinate System of 1927, (North or South Zone), where applicable.

NOTE: The above description of the Tract nominated for lease has been provided and corrected, where required, exclusively by the nomination party. Any mineral lease selected from this Tract and awarded by the Louisiana State Mineral Board shall be without warranty of any kind, either express, implied, or statutory, including, but not limited to, the implied warranties of merchantability and fitness for a particular purpose. Should the mineral lease awarded by the Louisiana State Mineral Board be subsequently modified, cancelled or abrogated due to the existence of conflicting leases, operating agreements, private claims or other future obligations or conditions which may affect all or any portion of the leased Tract, it shall not relieve the Lessee of the obligation to pay any bonus due thereon to the Louisiana State Mineral Board, nor shall the Louisiana State Mineral Board be obligated to refund any consideration paid by the Lessor prior to such modification, cancellation, or abrogation, including, but not limited to, bonuses, rentals and royalties.

NOTE: The State of Louisiana does hereby reserve, and this lease shall be subject to, the imprescriptible right of surface use in the nature of a servitude in favor of the Department of Natural Resources, including its Offices and Commissions, for the sole purpose of implementing, constructing, servicing and maintaining approved coastal zone management and/or restoration projects. Utilization of any and all rights derived under this lease by the mineral lessee, its agents, successors or assigns,

shall not interfere with nor hinder the reasonable surface use by the Department of Natural Resources, its Offices or Commissions, as herein above reserved.

Applicant: ENERGY PARTNERS, INC.

Bidder	Cash Payment	Price/Acre	Rental	Oil	Gas	Other



TRACT 38630 - Portion of Block 33, Main Pass Area, Revised, Plaquemines Parish, Louisiana

All of the lands now or formerly constituting the beds and bottoms of all water bodies of every nature and description the title of which vests in the State of Louisiana, together with all islands arising therein and other lands formed by accretion or by reliction, where allowed by law, excepting tax adjudicated lands, and not presently under mineral lease and cross hatched on October 11, 2006, situated in Plaquemines Parish, Louisiana, and more particularly described as follows: Beginning at a point on the East line of Block 33, Main Pass Area, Revised, having Coordinates of X = 2,605,850.00 and Y = 300,205.00; thence South 7,375.00 feet along the East line of said Block 33 to its Southeast corner having Coordinates of X = 2,605,850.00 and Y = 292,830.00; thence West 5,129.00 feet along the South line of said Block 33 to a point on the East boundary of State Lease No. 18664 having Coordinates of X = 2,600,721.00 and Y = 292,830.00; thence North 4,542.00 feet along the East boundary of said State Lease No. 18664 to its Northeast corner having Coordinates of X = 2,600,721.00 and Y = 297,372.00; thence West approximately 2,744 feet along the North boundary of said State Lease No. 18664 to the West line of said Block 33 to a point having a Coordinate of Y = 297,372.00; thence Northeasterly approximately 2,938 feet along the West line of said Block 33 to a point having a Coordinate of Y = 300,205.00; thence East approximately 7,096 feet to the point of beginning, containing approximately **1,022 acres**, all as more particularly outlined on a plat on file in the Office of Mineral Resources, Department of Natural Resources. All bearings, distances and coordinates are based on Louisiana Coordinate System of 1927, (North or South Zone), where applicable.

NOTE: The above description of the Tract nominated for lease has been provided and corrected, where required, exclusively by the nomination party. Any mineral lease selected from this Tract and awarded by the Louisiana State Mineral Board shall be without warranty of any kind, either express, implied, or statutory, including, but not limited to, the implied warranties of merchantability and fitness for a particular purpose. Should the mineral lease awarded by the Louisiana State Mineral Board be subsequently modified, cancelled or abrogated due to the existence of conflicting leases, operating agreements, private claims or other future obligations or conditions which may affect all or any portion of the leased Tract, it shall not relieve the Lessee of the obligation to pay any bonus due thereon to the Louisiana State Mineral Board, nor shall the Louisiana State Mineral Board be obligated to refund any consideration paid by the Lessor prior to such modification, cancellation, or abrogation, including, but not limited to, bonuses, rentals and royalties.

NOTE: The State of Louisiana does hereby reserve, and this lease shall be subject to, the imprescriptible right of surface use in the nature of a servitude in favor of the Department of Natural Resources, including its Offices and Commissions, for the sole purpose of implementing, constructing, servicing and maintaining approved coastal zone management

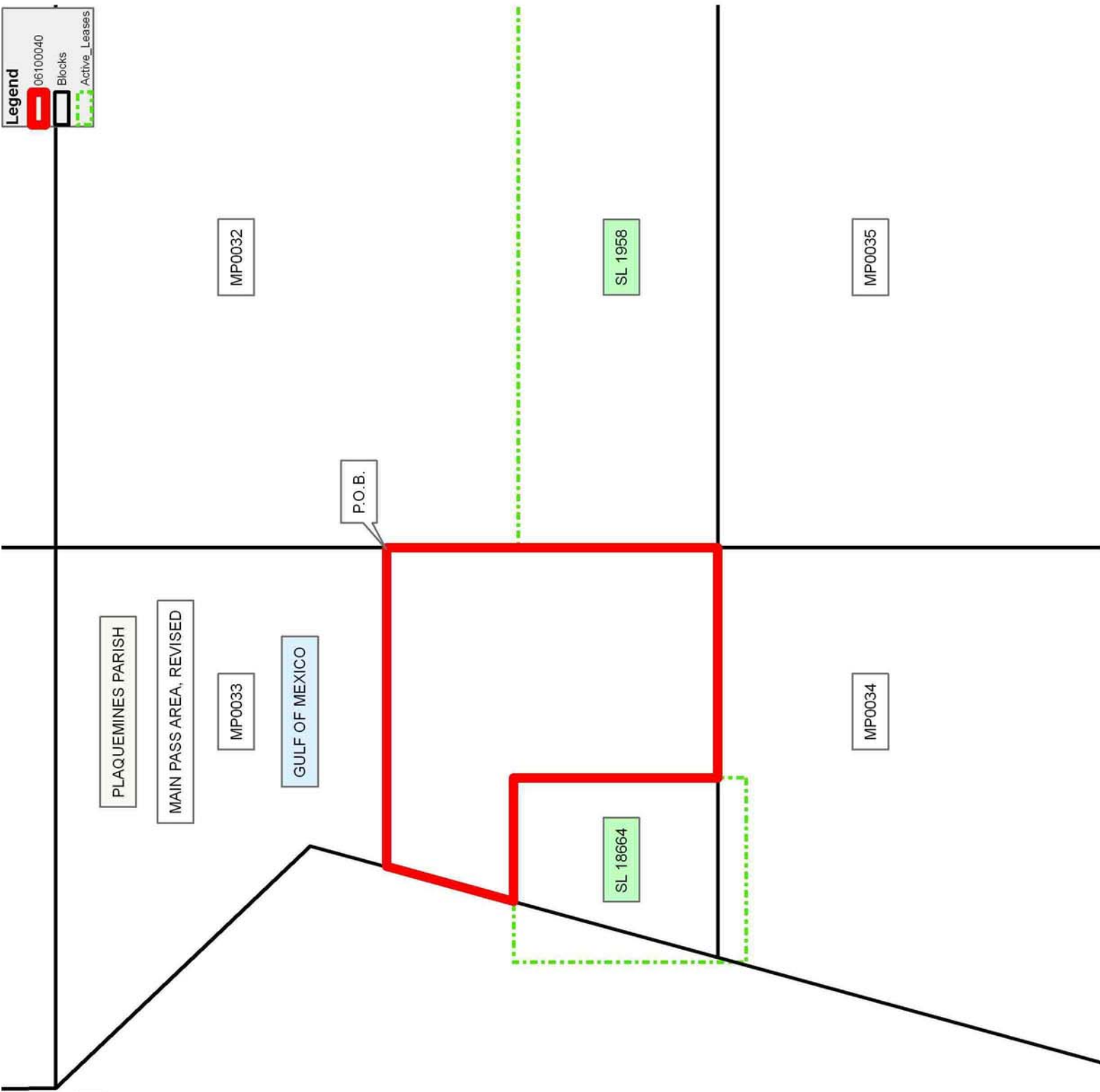
and/or restoration projects. Utilization of any and all rights derived under this lease by the mineral lessee, its agents, successors or assigns, shall not interfere with nor hinder the reasonable surface use by the Department of Natural Resources, its Offices or Commissions, as herein above reserved.

Applicant: ENERGY PARTNERS, INC.

Bidder	Cash Payment	Price/Acre	Rental	Oil	Gas	Other

Legend

- 06100040
- Blocks
- Active_Leases



TRACT 38631 - Portion of Blocks 76, and 79, Main Pass Area, Revised, Blocks 2, and 5, South Pass Area, Plaquemines Parish, Louisiana

All of the lands now or formerly constituting the beds and bottoms of all water bodies of every nature and description the title of which vests in the State of Louisiana, together with all islands arising therein and other lands formed by accretion or by reliction, where allowed by law, excepting tax adjudicated lands, and not presently under mineral lease and cross hatched on October 11, 2006, situated in Plaquemines Parish, Louisiana, and more particularly described as follows: Beginning at a point on the Pass-A-Loutre Wildlife Management Area boundary having Coordinates of X = 2,747,496.27 and Y = 195,305.41; thence leaving said boundary East approximately 7,139 feet to a point on the Louisiana Coastline having a Y Coordinate of 195,305.41; thence along said coastline the following courses: Southwesterly along a straight line to a point having Coordinates of X = 2,754,100 and Y = 186,915; Southeasterly along a straight line to a point having Coordinates of X = 2,754,263 and Y = 186,316; Southwesterly along a straight line to a point having Coordinates of X = 2,753,885 and Y = 183,460 and Southwesterly along a straight line to a point having a Y Coordinate of 183,280.44; thence West approximately 6,192 feet to a point having Coordinates of X = 2,747,496.27 and Y = 183,280.44; thence North 8,102.86 feet to a point on said Pass-A-Loutre Wildlife Management Area boundary having Coordinates of X = 2,747,496.27 and Y = 191,383.30; thence along said boundary on a curve to the left with a radius of 21,825.00 feet to the point of beginning, **LESS AND EXCEPT** any portion of the above described tract that may fall within the boundary of the Pass-A-Loutre Wildlife Management Area, containing approximately **1,873 acres**, all as more particularly outlined on a plat on file in the Office of Mineral Resources, Department of Natural Resources. All bearings, distances and coordinates are based on Louisiana Coordinate System of 1927, (North or South Zone), where applicable.

NOTE: The above description of the Tract nominated for lease has been provided and corrected, where required, exclusively by the nomination party. Any mineral lease selected from this Tract and awarded by the Louisiana State Mineral Board shall be without warranty of any kind, either express, implied, or statutory, including, but not limited to, the implied warranties of merchantability and fitness for a particular purpose. Should the mineral lease awarded by the Louisiana State Mineral Board be subsequently modified, cancelled or abrogated due to the existence of conflicting leases, operating agreements, private claims or other future obligations or conditions which may affect all or any portion of the leased Tract, it shall not relieve the Lessee of the obligation to pay any bonus due thereon to the Louisiana State Mineral Board, nor shall the Louisiana State Mineral Board be obligated to refund any consideration paid by the Lessor prior to such modification, cancellation, or abrogation, including, but not limited to, bonuses, rentals and royalties.

NOTE: The State of Louisiana does hereby reserve, and this lease shall be subject to, the imprescriptible right of surface use in the nature of a

servitude in favor of the Department of Natural Resources, including its Offices and Commissions, for the sole purpose of implementing, constructing, servicing and maintaining approved coastal zone management and/or restoration projects. Utilization of any and all rights derived under this lease by the mineral lessee, its agents, successors or assigns, shall not interfere with nor hinder the reasonable surface use by the Department of Natural Resources, its Offices or Commissions, as herein above reserved.

NOTE: The Department of Wildlife and Fisheries has designated certain areas in the coastal waters of the State of Louisiana as Oyster Seed Bed Areas. The exact location of those Seed Bed Areas must be obtained from the Department of Wildlife and Fisheries and any work done under a mineral lease from the State of Louisiana may necessarily be conducted in conformity with the rules and regulations promulgated by the said Department of Wildlife and Fisheries for Oyster Seed Bed Areas.

Applicant: STARKS OIL CORPORATION

Bidder	Cash Payment	Price/Acre	Rental	Oil	Gas	Other

Legend

- 061000.46
- Wildlife
- Blocks

