

TRACT 38612 - Iberia Parish, Louisiana

All of the lands now or formerly constituting the beds and bottoms of all water bodies of every nature and description the title of which vests in the State of Louisiana, together with all islands arising therein and other lands formed by accretion or by reliction, where allowed by law, excepting tax adjudicated lands, and not presently under mineral lease and cross hatched on October 11, 2006, situated in Iberia Parish, Louisiana, and more particularly described as follows: Beginning at the Southeast corner of State Lease No. 18070 and the Northeast corner of State Lease No. 18859 and a point on the West boundary of State Lease No. 18258 having Coordinates of $X = 2,003,560.74$ and $Y = 482,333.27$; thence along the boundary of said State Lease No. 18258 the following courses: Easterly approximately 4,706 feet, Southerly approximately 1,033 feet, Easterly approximately 1,349 feet and Southerly approximately 1,631 feet to a point on the West boundary of said State Lease No. 18258 also being the Easternmost Northeast corner of State Lease No. 2655; thence along the boundary of said State Lease No. 2655 the following courses: Westerly approximately 1,466 feet, Northerly approximately 1,439 feet and Westerly approximately 4,646 feet to a point on the East boundary of State Lease No. 18859 having a Coordinate of $X = 2,003,560.74$; thence North approximately 1,296 feet along the Eastern most boundary of said State Lease No. 18859 to the point of beginning, **LESS AND EXCEPT** any portion of State Lease No. 2655, State Lease No. 18070, State Lease No. 18258 and State Lease No. 18859 that may lie within the above described tract, containing approximately **8 acres**, all as more particularly outlined on a plat on file in the Office of Mineral Resources, Department of Natural Resources. All bearings, distances and coordinates are based on Louisiana Coordinate System of 1927, (North or South Zone), where applicable.

NOTE: The above description of the Tract nominated for lease has been provided and corrected, where required, exclusively by the nomination party. Any mineral lease selected from this Tract and awarded by the Louisiana State Mineral Board shall be without warranty of any kind, either express, implied, or statutory, including, but not limited to, the implied warranties of merchantability and fitness for a particular purpose. Should the mineral lease awarded by the Louisiana State Mineral Board be subsequently modified, cancelled or abrogated due to the existence of conflicting leases, operating agreements, private claims or other future obligations or conditions which may affect all or any portion of the leased Tract, it shall not relieve the Lessee of the obligation to pay any bonus due thereon to the Louisiana State Mineral Board, nor shall the Louisiana State Mineral Board be obligated to refund any consideration paid by the Lessor prior to such modification, cancellation, or abrogation, including, but not limited to, bonuses, rentals and royalties.

NOTE: The State of Louisiana does hereby reserve, and this lease shall be subject to, the imprescriptible right of surface use in the nature of a servitude in favor of the Department of Natural Resources, including its Offices and Commissions, for the sole purpose of implementing,

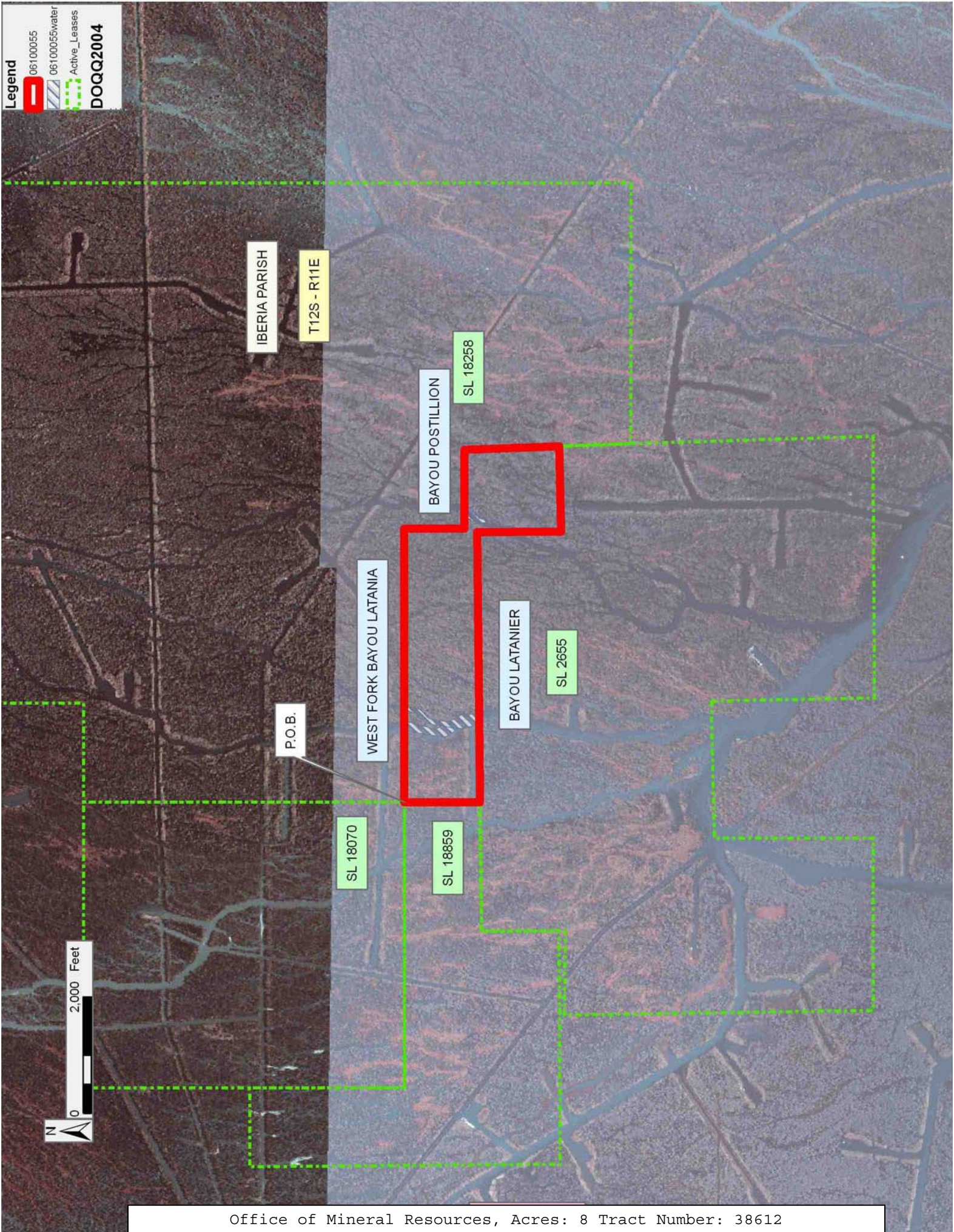
constructing, servicing and maintaining approved coastal zone management and/or restoration projects. Utilization of any and all rights derived under this lease by the mineral lessee, its agents, successors or assigns, shall not interfere with nor hinder the reasonable surface use by the Department of Natural Resources, its Offices or Commissions, as herein above reserved.

Applicant: JANUS GULF COAST

Bidder	Cash Payment	Price/ Acre	Rental	Oil	Gas	Other

Legend

- 06100055
- 06100055water
- Active_Leases
- DOQQ2004



TRACT 38613 - Assumption, Iberia and St. Martin Parishes, Louisiana

All of the lands now or formerly constituting the beds and bottoms of all water bodies of every nature and description the title of which vests in the State of Louisiana, together with all islands arising therein and other lands formed by accretion or by reliction, where allowed by law, excepting tax adjudicated lands, and not presently under mineral lease and cross hatched on October 11, 2006, situated in Assumption Iberia and St. Martin Parishes, Louisiana, and more particularly described as follows: Beginning at a point having Coordinates of X = 2,018,700.00 and Y = 478,450.00; thence East 5,300.00 feet to a point having Coordinates X = 2,024,000.00 and Y = 478,450.00; thence South 9,305.71 feet to a point having Coordinates X = 2,024,000.00 and Y = 469,144.29; thence West 5,300.00 feet to a point having Coordinates X = 2,018,700.00 and Y = 469,144.29; thence North 9,305.71 feet to the point of beginning, containing approximately **15 acres**, all as more particularly outlined on a plat on file in the Office of Mineral Resources, Department of Natural Resources. All bearings, distances and coordinates are based on Louisiana Coordinate System of 1927, (North or South Zone), where applicable.

NOTE: The above description of the Tract nominated for lease has been provided and corrected, where required, exclusively by the nomination party. Any mineral lease selected from this Tract and awarded by the Louisiana State Mineral Board shall be without warranty of any kind, either express, implied, or statutory, including, but not limited to, the implied warranties of merchantability and fitness for a particular purpose. Should the mineral lease awarded by the Louisiana State Mineral Board be subsequently modified, cancelled or abrogated due to the existence of conflicting leases, operating agreements, private claims or other future obligations or conditions which may affect all or any portion of the leased Tract, it shall not relieve the Lessee of the obligation to pay any bonus due thereon to the Louisiana State Mineral Board, nor shall the Louisiana State Mineral Board be obligated to refund any consideration paid by the Lessor prior to such modification, cancellation, or abrogation, including, but not limited to, bonuses, rentals and royalties.

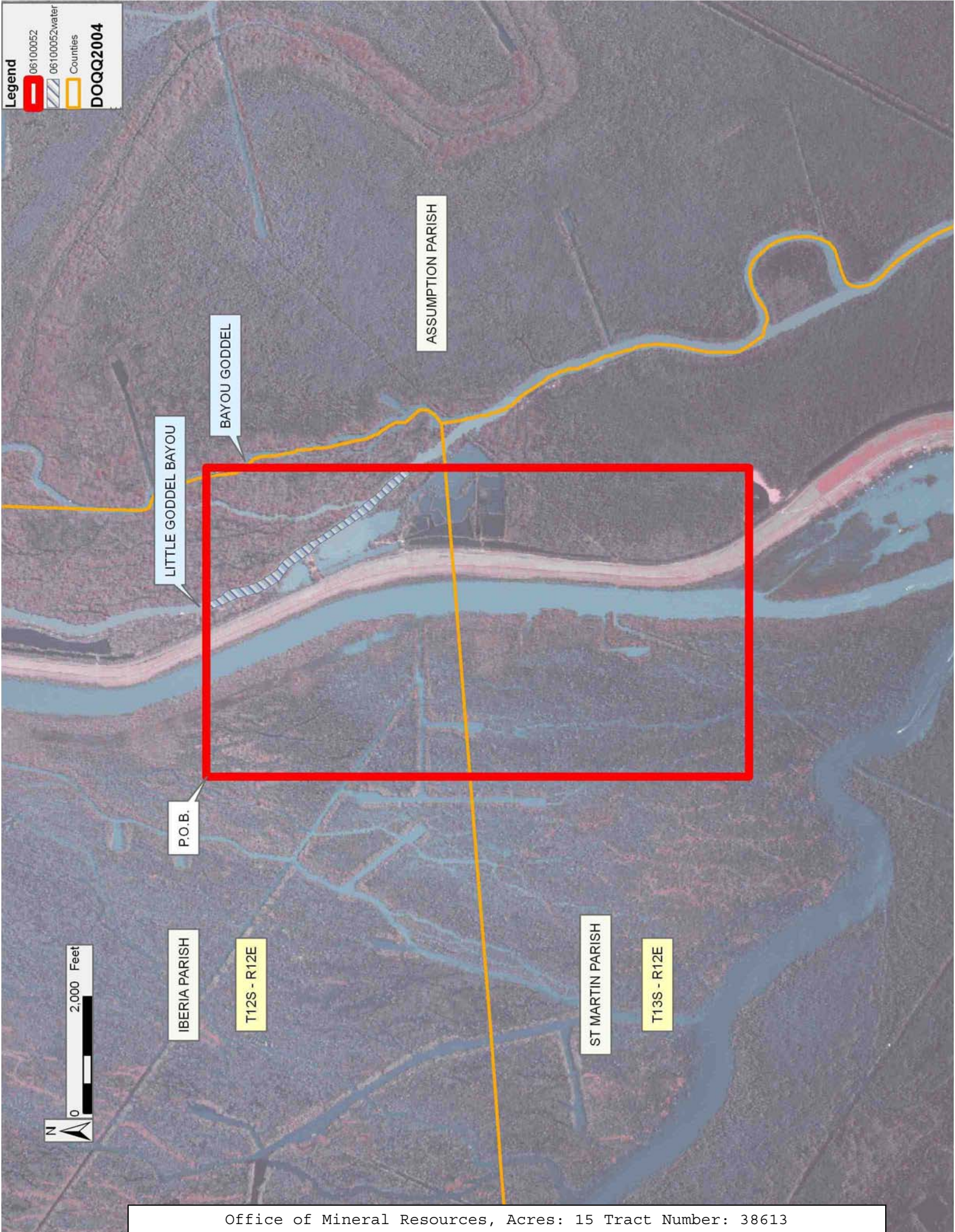
NOTE: The State of Louisiana does hereby reserve, and this lease shall be subject to, the imprescriptible right of surface use in the nature of a servitude in favor of the Department of Natural Resources, including its Offices and Commissions, for the sole purpose of implementing, constructing, servicing and maintaining approved coastal zone management and/or restoration projects. Utilization of any and all rights derived under this lease by the mineral lessee, its agents, successors or assigns, shall not interfere with nor hinder the reasonable surface use by the Department of Natural Resources, its Offices or Commissions, as herein above reserved.

Applicant: JANUS GULF COAST

Bidder	Cash Payment	Price/ Acre	Rental	Oil	Gas	Other

Legend

- 06100052
- 06100052water
- Counties
- DOQQ2004



TRACT 38614 - Jefferson and Plaquemines Parishes, Louisiana

All of the lands now or formerly constituting the beds and bottoms of all water bodies of every nature and description the title of which vests in the State of Louisiana, together with all islands arising therein and other lands formed by accretion or by reliction, where allowed by law, excepting tax adjudicated lands, and not presently under mineral lease and cross hatched on October 11, 2006, situated in Jefferson and Plaquemines Parishes, Louisiana, and more particularly described as follows: Beginning at a point having Coordinates of X = 2,385,720.00 and Y = 418,025.84; thence East 18,480.00 feet to a point having Coordinates of X = 2,404,200.00 and Y = 418,025.84; thence South 18,480.00 feet to a point having Coordinates of X = 2,404,200.00 and Y = 399,545.84; thence West 18,480.00 feet to a point having Coordinates of X = 2,385,720.00 and Y = 399,545.84; thence North 18,480.00 feet to the Point of Beginning, containing approximately **431 acres**, all as more particularly outlined on a plat on file in the Office of Mineral Resources, Department of Natural Resources. All bearings, distances and coordinates are based on Louisiana Coordinate System of 1927, (North or South Zone), where applicable.

NOTE: The above description of the Tract nominated for lease has been provided and corrected, where required, exclusively by the nomination party. Any mineral lease selected from this Tract and awarded by the Louisiana State Mineral Board shall be without warranty of any kind, either express, implied, or statutory, including, but not limited to, the implied warranties of merchantability and fitness for a particular purpose. Should the mineral lease awarded by the Louisiana State Mineral Board be subsequently modified, cancelled or abrogated due to the existence of conflicting leases, operating agreements, private claims or other future obligations or conditions which may affect all or any portion of the leased Tract, it shall not relieve the Lessee of the obligation to pay any bonus due thereon to the Louisiana State Mineral Board, nor shall the Louisiana State Mineral Board be obligated to refund any consideration paid by the Lessor prior to such modification, cancellation, or abrogation, including, but not limited to, bonuses, rentals and royalties.

NOTE: The State of Louisiana does hereby reserve, and this lease shall be subject to, the imprescriptible right of surface use in the nature of a servitude in favor of the Department of Natural Resources, including its Offices and Commissions, for the sole purpose of implementing, constructing, servicing and maintaining approved coastal zone management and/or restoration projects. Utilization of any and all rights derived under this lease by the mineral lessee, its agents, successors or assigns, shall not interfere with nor hinder the reasonable surface use by the Department of Natural Resources, its Offices or Commissions, as herein above reserved.

Applicant: SOUTH COAST PRODUCTION COMPANY, LTD.

Bidder	Cash Payment	Price/ Acre	Rental	Oil	Gas	Other

Legend

- 06100012
- Wildlife
- 06100012water
- Counties
- DOQQ2004**

PLAQUEMINES PARISH

JEFFERSON PARISH

BAYOU BARATARIA

UNNAMED

T15S - R24E

BAYOU AUX CARPES

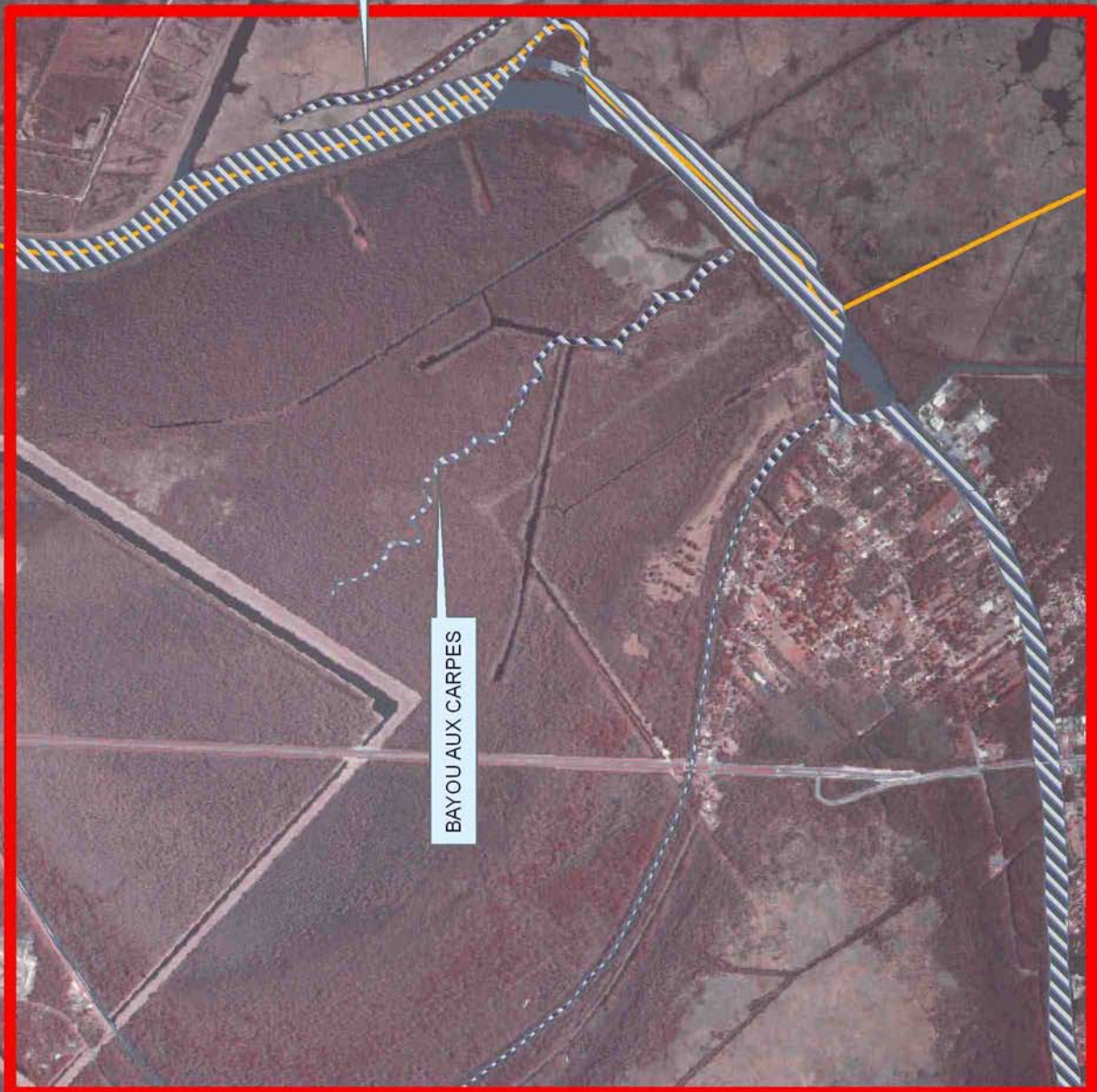
BAYOU DES FAMILLES

T15S - R23E

BAYOU BARATARIA



P.O.B.



TRACT 38615 - St. Charles Parish, Louisiana

All of the lands now or formerly constituting the beds and bottoms of all water bodies of every nature and description the title of which vests in the State of Louisiana, together with all islands arising therein and other lands formed by accretion or by reliction, where allowed by law, excepting tax adjudicated lands, and not presently under mineral lease and cross hatched on October 11, 2006, situated in St. Charles Parish, Louisiana, and more particularly described as follows: Beginning at a point having Coordinates of X = 2,342,005.00 and Y = 404,650.00; thence South 9,496.08 feet to a point having Coordinates of X = 2,342,005.00 and Y = 395,153.92; thence South 41 degrees 36 minutes 04 seconds West 4,110.69 feet to a point having Coordinates of X = 2,339,275.75 and Y = 392,080.00; thence West 15,750.75 feet to a point having Coordinates of X = 2,323,525.00 and Y = 392,080.00; thence North 12,570.00 feet to a point having Coordinates of X = 2,323,525.00 and Y = 404,650.00; thence East 18,480.00 feet to the point of beginning, **LESS AND EXCEPT** any portion of the above described tract that may be located within the Salvador Wildlife Management Area, containing approximately **2,498 acres**, all as more particularly outlined on a plat on file in the Office of Mineral Resources, Department of Natural Resources. All bearings, distances and coordinates are based on Louisiana Coordinate System of 1927, (North or South Zone), where applicable.

NOTE: The above description of the Tract nominated for lease has been provided and corrected, where required, exclusively by the nomination party. Any mineral lease selected from this Tract and awarded by the Louisiana State Mineral Board shall be without warranty of any kind, either express, implied, or statutory, including, but not limited to, the implied warranties of merchantability and fitness for a particular purpose. Should the mineral lease awarded by the Louisiana State Mineral Board be subsequently modified, cancelled or abrogated due to the existence of conflicting leases, operating agreements, private claims or other future obligations or conditions which may affect all or any portion of the leased Tract, it shall not relieve the Lessee of the obligation to pay any bonus due thereon to the Louisiana State Mineral Board, nor shall the Louisiana State Mineral Board be obligated to refund any consideration paid by the Lessor prior to such modification, cancellation, or abrogation, including, but not limited to, bonuses, rentals and royalties.

NOTE: This tract is located within the boundaries of a wildlife management area or refuge and any operations conducted thereon in conjunction with this mineral lease may be subject to rules and regulations promulgated by the Department of Wildlife and Fisheries for the protection of fish, birds and other wildlife including, but not necessarily limited to, the following:

1. No activities will be allowed without written authorization from the Louisiana Department of Wildlife and Fisheries. All projects will be coordinated and approved by the appropriate WMA Supervisor prior to any activities on the wildlife management area.

2. Proposed projects will be evaluated on a case by case basis. Modifications to proposed projects may be required including, but not limited to, access routes, spoil placement, well sites, flow lines and other appurtenant structures required by the Louisiana Department of Wildlife and Fisheries.

3. Compensatory mitigation will be required to offset unavoidable wetland impacts.

4. Removal of all structures, facilities, and equipment will be required within 120 days of abandonment unless otherwise agreed to by the Department of Wildlife and Fisheries.

5. No activities will be allowed during the hunting season unless approved by the Department.

6. Compliance with the said WMA regulations will be required unless otherwise specified by the Department.

7. Prior to submitting applications for wetland permits to Federal and State permitting agencies the lease holder shall coordinate project details with the Louisiana Department of Wildlife and Fisheries, Fur and Refuge Division. Contact person for the Department will be Mike Windham at (504) 568-5886 or (225) 765-2807.

NOTE: The State of Louisiana does hereby reserve, and this lease shall be subject to, the imprescriptible right of surface use in the nature of a servitude in favor of the Department of Natural Resources, including its Offices and Commissions, for the sole purpose of implementing, constructing, servicing and maintaining approved coastal zone management and/or restoration projects. Utilization of any and all rights derived under this lease by the mineral lessee, its agents, successors or assigns, shall not interfere with nor hinder the reasonable surface use by the Department of Natural Resources, its Offices or Commissions, as herein above reserved.

Applicant: TAYLEX, INC.

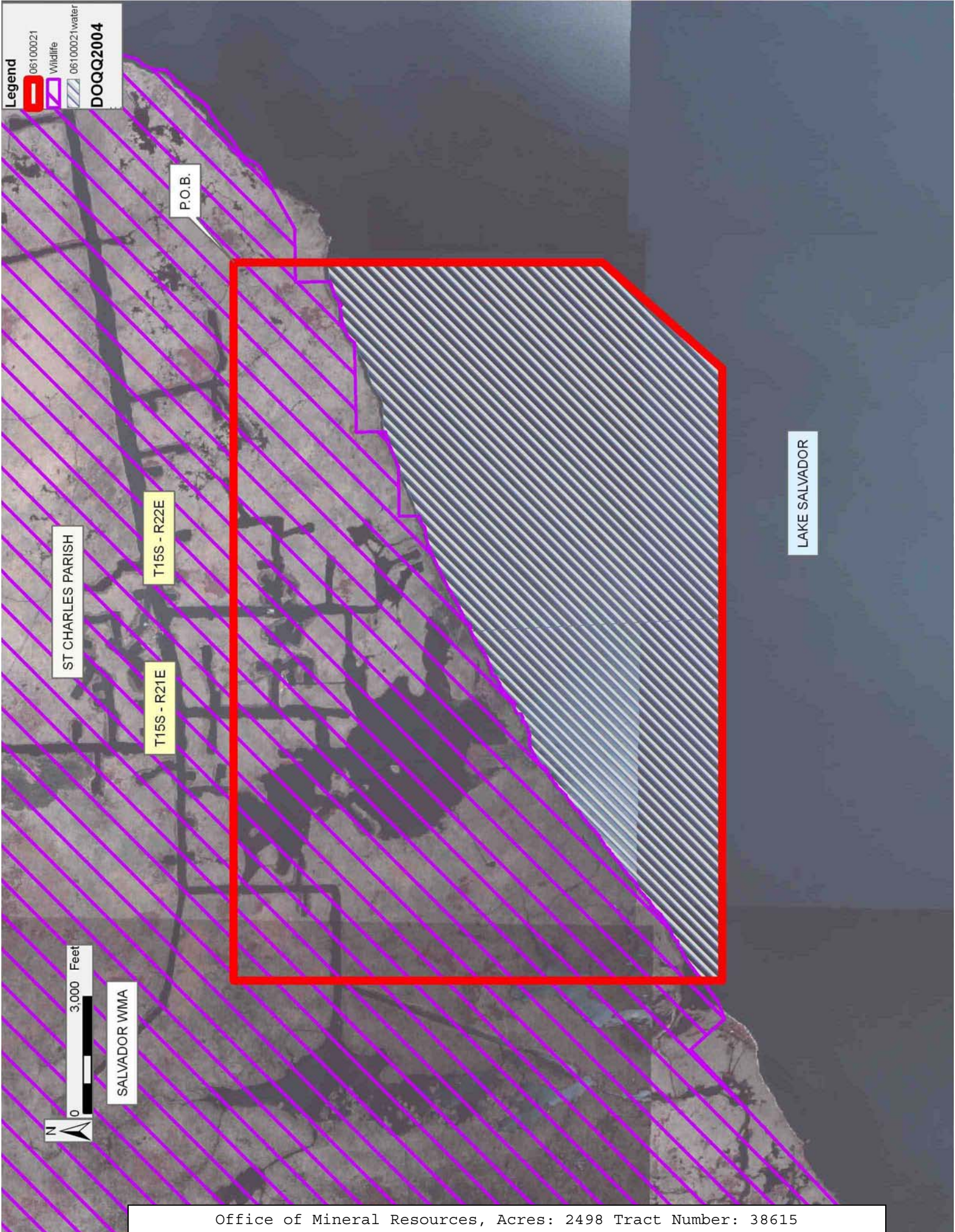
Bidder	Cash Payment	Price/ Acre	Rental	Oil	Gas	Other

Legend

06100021
Wildlife

06100021water

DOQQ2004



TRACT 38616 - Terrebonne Parish, Louisiana

All of the lands now or formerly constituting the beds and bottoms of all water bodies of every nature and description the title of which vests in the State of Louisiana, together with all islands arising therein and other lands formed by accretion or by reliction, where allowed by law, excepting tax adjudicated lands, and not presently under mineral lease and cross hatched on October 11, 2006, situated in Terrebonne Parish, Louisiana, and more particularly described as follows: Beginning at a point having Coordinates of X = 2,184,280.61 and Y = 356,372.30; thence South 30 degrees 00 minutes 00 seconds East 4,800.00 feet to a point having Coordinates of X = 2,186,680.61 and Y = 352,215.38; thence South 87 degrees 00 minutes 30 seconds West 6,096.43 feet to a point having Coordinates of X = 2,180,592.49 and Y = 351,897.20; thence North 27 degrees 00 minutes 00 seconds West 4,800.00 feet to a point having Coordinates of X = 2,178,413.34 and Y = 356,174.03; thence North 88 degrees 03 minutes 52 seconds East 5,870.62 feet to the Point of Beginning containing approximately **5 acres**, all as more particularly outlined on a plat on file in the Office of Mineral Resources, Department of Natural Resources. All bearings, distances and coordinates are based on Louisiana Coordinate System of 1927, (North or South Zone), where applicable.

NOTE: The above description of the Tract nominated for lease has been provided and corrected, where required, exclusively by the nomination party. Any mineral lease selected from this Tract and awarded by the Louisiana State Mineral Board shall be without warranty of any kind, either express, implied, or statutory, including, but not limited to, the implied warranties of merchantability and fitness for a particular purpose. Should the mineral lease awarded by the Louisiana State Mineral Board be subsequently modified, cancelled or abrogated due to the existence of conflicting leases, operating agreements, private claims or other future obligations or conditions which may affect all or any portion of the leased Tract, it shall not relieve the Lessee of the obligation to pay any bonus due thereon to the Louisiana State Mineral Board, nor shall the Louisiana State Mineral Board be obligated to refund any consideration paid by the Lessor prior to such modification, cancellation, or abrogation, including, but not limited to, bonuses, rentals and royalties.

NOTE: The State of Louisiana does hereby reserve, and this lease shall be subject to, the imprescriptible right of surface use in the nature of a servitude in favor of the Department of Natural Resources, including its Offices and Commissions, for the sole purpose of implementing, constructing, servicing and maintaining approved coastal zone management and/or restoration projects. Utilization of any and all rights derived under this lease by the mineral lessee, its agents, successors or assigns, shall not interfere with nor hinder the reasonable surface use by the Department of Natural Resources, its Offices or Commissions, as herein above reserved.

Applicant: ACL EXPLORATION, INC.

Bidder	Cash Payment	Price/ Acre	Rental	Oil	Gas	Other



TRACT 38617 - Terrebonne Parish, Louisiana

All of the lands now or formerly constituting the beds and bottoms of all water bodies of every nature and description the title of which vests in the State of Louisiana, together with all islands arising therein and other lands formed by accretion or by reliction, where allowed by law, excepting tax adjudicated lands, and not presently under mineral lease and cross hatched on October 11, 2006, situated in Terrebonne Parish, Louisiana, and more particularly described as follows: Beginning at a point having Coordinates of X = 2,188,980.61 and Y = 348,231.66; thence South 65 degrees 00 minutes 00 seconds West approximately 5,839 feet to a point on the Eastern boundary of State Lease No. 2234, as amended;; thence Northwesterly approximately 3,542 feet along the Eastern boundary of said State Lease No. 2234, as amended, to its most Northerly corner; thence North 27 degrees 00 minutes 00 seconds West approximately 3,329 feet to a point having Coordinates of X = 2,180,592.49 and Y = 351,897.20; thence North 87 degrees 00 minutes 30 seconds East 6,096.43 feet to a point having Coordinates of X = 2,186,680.61 and Y = 352,215.38; thence South 30 degrees 00 minutes 00 seconds East 4,600.00 feet to the Point of Beginning, **LESS AND EXCEPT** that portion, if any, of State Lease No. 2234, as amended, that may lie within the above described tract, containing approximately **10 acres**, all as more particularly outlined on a plat on file in the Office of Mineral Resources, Department of Natural Resources. All bearings, distances and coordinates are based on Louisiana Coordinate System of 1927, (North or South Zone), where applicable.

NOTE: The above description of the Tract nominated for lease has been provided and corrected, where required, exclusively by the nomination party. Any mineral lease selected from this Tract and awarded by the Louisiana State Mineral Board shall be without warranty of any kind, either express, implied, or statutory, including, but not limited to, the implied warranties of merchantability and fitness for a particular purpose. Should the mineral lease awarded by the Louisiana State Mineral Board be subsequently modified, cancelled or abrogated due to the existence of conflicting leases, operating agreements, private claims or other future obligations or conditions which may affect all or any portion of the leased Tract, it shall not relieve the Lessee of the obligation to pay any bonus due thereon to the Louisiana State Mineral Board, nor shall the Louisiana State Mineral Board be obligated to refund any consideration paid by the Lessor prior to such modification, cancellation, or abrogation, including, but not limited to, bonuses, rentals and royalties.

NOTE: The State of Louisiana does hereby reserve, and this lease shall be subject to, the imprescriptible right of surface use in the nature of a servitude in favor of the Department of Natural Resources, including its Offices and Commissions, for the sole purpose of implementing, constructing, servicing and maintaining approved coastal zone management and/or restoration projects. Utilization of any and all rights derived under this lease by the mineral lessee, its agents, successors or assigns, shall not interfere with nor hinder the reasonable surface use by the

Department of Natural Resources, its Offices or Commissions, as herein above reserved.

Applicant: ACL EXPLORATION, INC.

Bidder	Cash Payment	Price/ Acre	Rental	Oil	Gas	Other

Legend

- 06100018
- 06100018water
- Active_Leases
- DOQQ2004**



TRACT 38618 - Iberia Parish, Louisiana

All of the lands now or formerly constituting the beds and bottoms of all water bodies of every nature and description the title of which vests in the State of Louisiana, together with all islands arising therein and other lands formed by accretion or by reliction, where allowed by law, excepting tax adjudicated lands, and not presently under mineral lease and cross hatched on October 11, 2006, situated in Iberia Parish, Louisiana, and more particularly described as follows: Beginning at a point having Coordinates of X = 1,881,000.00 and Y = 352,000.00; thence South 10,025.00 feet to a point having Coordinates of X = 1,881,000.00 and Y = 341,975.00; thence West 2,441.08 feet to a point on the Eastern boundary line of State Lease No. 1703 having Coordinates of X = 1,878,558.92 and Y = 341,975.00; thence along the boundary of said State Lease No. 1703 the following courses and distances: North 00 degrees 13 minutes 53 seconds East 425.22 feet, South 60 degrees 20 minutes 40 seconds West 81.29 feet, South 56 degrees 47 minutes 35 seconds West 404.21 feet, and South 00 degrees 14 minutes 09 seconds West 163.63 feet to a point having Coordinates of X = 1,878,151.13 and Y = 341,975.00; thence West 7,151.13 feet to a point having Coordinates of X = 1,871,000.00 and Y = 341,975.00; thence North 10,025.00 feet to a point having Coordinates of X = 1,871,000.00 and Y = 352,000.00; thence East 10,000.00 feet to the point of beginning, containing approximately **2,298.64 acres**, all as more particularly outlined on a plat on file in the Office of Mineral Resources, Department of Natural Resources. All bearings, distances and coordinates are based on Louisiana Coordinate System of 1927, (North or South Zone), where applicable.

NOTE: The above description of the Tract nominated for lease has been provided and corrected, where required, exclusively by the nomination party. Any mineral lease selected from this Tract and awarded by the Louisiana State Mineral Board shall be without warranty of any kind, either express, implied, or statutory, including, but not limited to, the implied warranties of merchantability and fitness for a particular purpose. Should the mineral lease awarded by the Louisiana State Mineral Board be subsequently modified, cancelled or abrogated due to the existence of conflicting leases, operating agreements, private claims or other future obligations or conditions which may affect all or any portion of the leased Tract, it shall not relieve the Lessee of the obligation to pay any bonus due thereon to the Louisiana State Mineral Board, nor shall the Louisiana State Mineral Board be obligated to refund any consideration paid by the Lessor prior to such modification, cancellation, or abrogation, including, but not limited to, bonuses, rentals and royalties.

NOTE: The State of Louisiana does hereby reserve, and this lease shall be subject to, the imprescriptible right of surface use in the nature of a servitude in favor of the Department of Natural Resources, including its Offices and Commissions, for the sole purpose of implementing, constructing, servicing and maintaining approved coastal zone management and/or restoration projects. Utilization of any and all rights derived

under this lease by the mineral lessee, its agents, successors or assigns, shall not interfere with nor hinder the reasonable surface use by the Department of Natural Resources, its Offices or Commissions, as herein above reserved.

NOTE: The Department of Wildlife and Fisheries has designated certain areas in the coastal waters of the State of Louisiana as Oyster Seed Bed Areas. The exact location of those Seed Bed Areas must be obtained from the Department of Wildlife and Fisheries and any work done under a mineral lease from the State of Louisiana may necessarily be conducted in conformity with the rules and regulations promulgated by the said Department of Wildlife and Fisheries for Oyster Seed Bed Areas.

Applicant: CYPRESS ENERGY CORPORATION

Bidder	Cash Payment	Price/ Acre	Rental	Oil	Gas	Other



IBERIA PARISH

VERMILION BAY

P.O.B.

SL 1703

TRACT 38619 - Iberia and St. Mary Parishes, Louisiana

All of the lands now or formerly constituting the beds and bottoms of all water bodies of every nature and description the title of which vests in the State of Louisiana, together with all islands arising therein and other lands formed by accretion or by reliction, where allowed by law, excepting tax adjudicated lands, and not presently under mineral lease and cross hatched on October 11, 2006, situated in Iberia and St. Mary Parishes, Louisiana, and more particularly described as follows: Beginning at a point having Coordinates of X = 1,881,000.00 and Y = 352,000.00; thence East 11,000 feet to a point having Coordinates of X = 1,892,000.00 and Y = 352,000.00; thence South 7,491.23 feet to a point on the Northern boundary line of State Lease No. 10835 having Coordinates of X = 1,892,000.00 and Y = 344,508.77; thence West 2,000.00 feet along the Northern boundary line of said State Lease No. 10835 to its Northwest corner and the Northeast corner of State Lease No. 11282 having Coordinates of X = 1,890,000.00 and Y = 344,508.77; thence West 1,150.00 feet along the Northern boundary line of said State Lease No. 11282 to its Northwest corner and the Northeast corner of State Lease No. 11279 having Coordinates of X = 1,888,850.00 and Y = 344,508.77; thence along the boundary of said State Lease No. 11279 the following courses and distances: West 2,425.80 feet, and South 00 degrees 00 minutes 31 seconds East 2,533.77 feet to a point having Coordinates of X = 1,886,424.57 and Y = 341,975.00; thence West 5,424.57 feet to a point having Coordinates of X = 1,881,000.00 and Y = 341,975.00; thence North 10,025.00 feet to the point of beginning, containing approximately **2,207.24 acres**, all as more particularly outlined on a plat on file in the Office of Mineral Resources, Department of Natural Resources. All bearings, distances and coordinates are based on Louisiana Coordinate System of 1927, (North or South Zone), where applicable.

NOTE: The above description of the Tract nominated for lease has been provided and corrected, where required, exclusively by the nomination party. Any mineral lease selected from this Tract and awarded by the Louisiana State Mineral Board shall be without warranty of any kind, either express, implied, or statutory, including, but not limited to, the implied warranties of merchantability and fitness for a particular purpose. Should the mineral lease awarded by the Louisiana State Mineral Board be subsequently modified, cancelled or abrogated due to the existence of conflicting leases, operating agreements, private claims or other future obligations or conditions which may affect all or any portion of the leased Tract, it shall not relieve the Lessee of the obligation to pay any bonus due thereon to the Louisiana State Mineral Board, nor shall the Louisiana State Mineral Board be obligated to refund any consideration paid by the Lessor prior to such modification, cancellation, or abrogation, including, but not limited to, bonuses, rentals and royalties.

NOTE: The State of Louisiana does hereby reserve, and this lease shall be subject to, the imprescriptible right of surface use in the nature of a servitude in favor of the Department of Natural Resources, including its

Offices and Commissions, for the sole purpose of implementing, constructing, servicing and maintaining approved coastal zone management and/or restoration projects. Utilization of any and all rights derived under this lease by the mineral lessee, its agents, successors or assigns, shall not interfere with nor hinder the reasonable surface use by the Department of Natural Resources, its Offices or Commissions, as herein above reserved.

NOTE: The Department of Wildlife and Fisheries has designated certain areas in the coastal waters of the State of Louisiana as Oyster Seed Bed Areas. The exact location of those Seed Bed Areas must be obtained from the Department of Wildlife and Fisheries and any work done under a mineral lease from the State of Louisiana may necessarily be conducted in conformity with the rules and regulations promulgated by the said Department of Wildlife and Fisheries for Oyster Seed Bed Areas.

Applicant: CYPRESS ENERGY CORPORATION

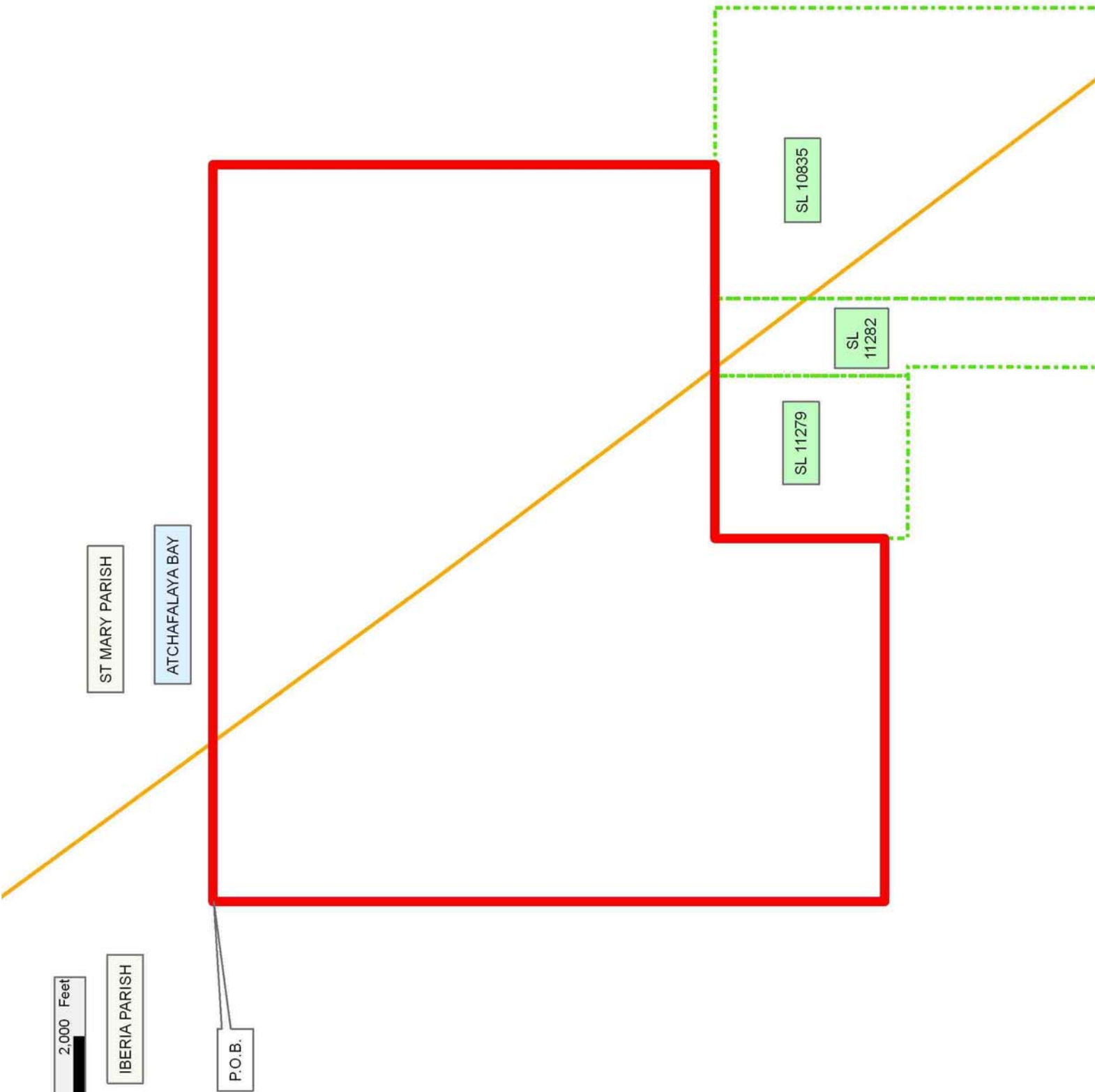
Bidder	Cash Payment	Price/ Acre	Rental	Oil	Gas	Other

Legend

06100015

Active_Leases

Counties



TRACT 38620 - Terrebonne Parish, Louisiana

All of the lands now or formerly constituting the beds and bottoms of all water bodies of every nature and description the title of which vests in the State of Louisiana, together with all islands arising therein and other lands formed by accretion or by reliction, where allowed by law, excepting tax adjudicated lands, and not presently under mineral lease and cross hatched on October 11, 2006, situated in Terrebonne Parish, Louisiana, and more particularly described as follows: Beginning at a point having Coordinates of X = 2,188,980.61 and Y = 348,231.66; thence Southeasterly approximately 1,992 feet to the Northeast corner of the Eastern portion of State Lease No. 2234, as amended; thence along the boundary of the Eastern portion of said State Lease No. 2234, as amended, the following courses: Southwesterly approximately 3,067 feet to a point and Southeasterly approximately 1,608 feet to a point; thence Southwesterly approximately 638 feet to a point on the East boundary of the Western portion of said State Lease No. 2234, as amended; thence along the boundary of the Western portion of said State Lease No. 2234, as amended, the following courses: Northwesterly approximately 1,634 feet to a point; Southwesterly approximately 2,328 feet to a point, and Northwesterly approximately 2,022 feet to a point; thence North 65 degrees 00 minutes 00 seconds East approximately 5,839 feet to the Point of Beginning, **LESS AND EXCEPT** all of Operating Agreement No. 27 that lies within the above described tract, and **LESS AND EXCEPT** that portion, if any, of State Lease No. 2234, as amended, that may lie within the above described tract, containing approximately **4 acres**, all as more particularly outlined on a plat on file in the Office of Mineral Resources, Department of Natural Resources. All bearings, distances and coordinates are based on Louisiana Coordinate System of 1927, (North or South Zone), where applicable.

NOTE: The above description of the Tract nominated for lease has been provided and corrected, where required, exclusively by the nomination party. Any mineral lease selected from this Tract and awarded by the Louisiana State Mineral Board shall be without warranty of any kind, either express, implied, or statutory, including, but not limited to, the implied warranties of merchantability and fitness for a particular purpose. Should the mineral lease awarded by the Louisiana State Mineral Board be subsequently modified, cancelled or abrogated due to the existence of conflicting leases, operating agreements, private claims or other future obligations or conditions which may affect all or any portion of the leased Tract, it shall not relieve the Lessee of the obligation to pay any bonus due thereon to the Louisiana State Mineral Board, nor shall the Louisiana State Mineral Board be obligated to refund any consideration paid by the Lessor prior to such modification, cancellation, or abrogation, including, but not limited to, bonuses, rentals and royalties.

NOTE: The State of Louisiana does hereby reserve, and this lease shall be subject to, the imprescriptible right of surface use in the nature of a servitude in favor of the Department of Natural Resources, including its

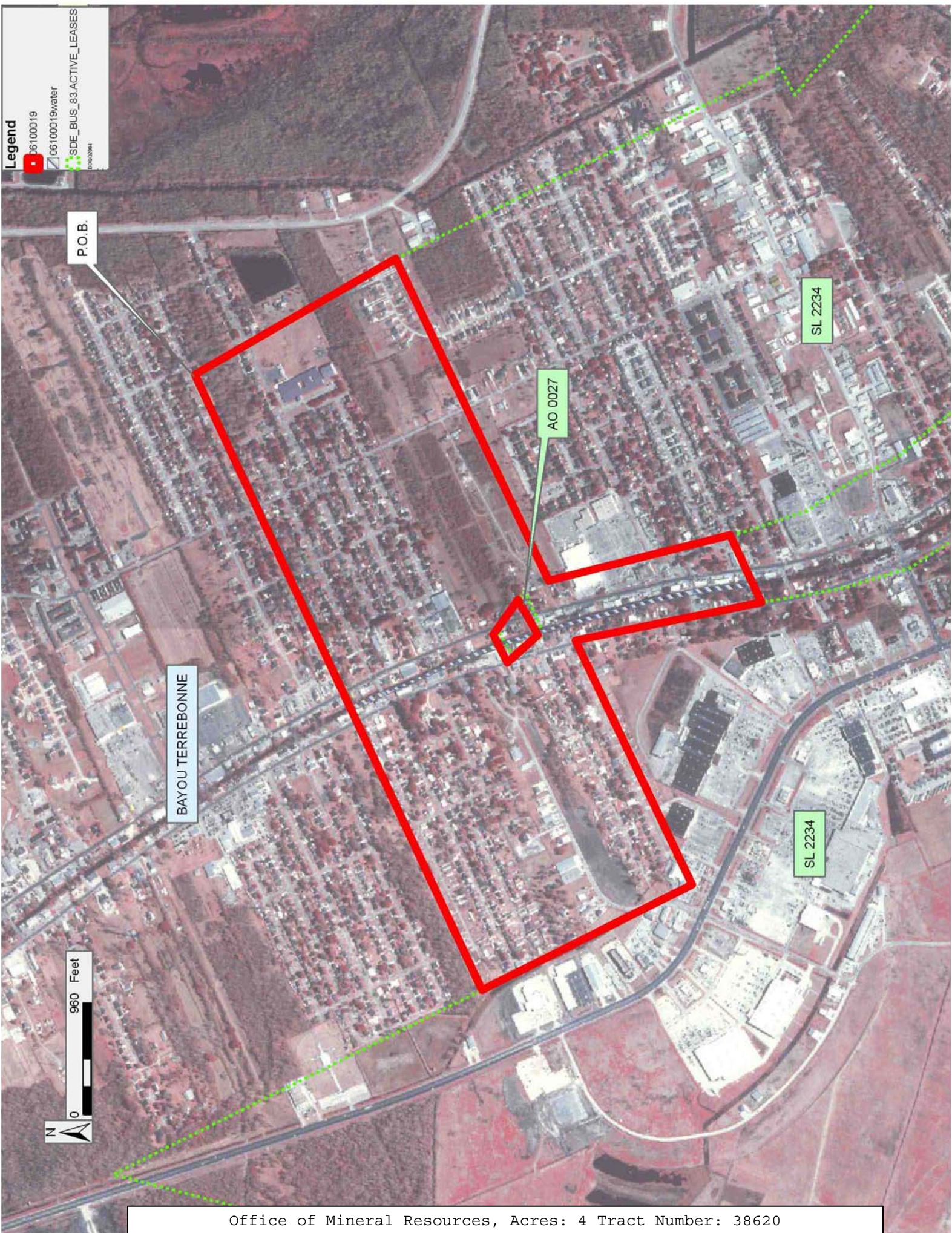
Offices and Commissions, for the sole purpose of implementing, constructing, servicing and maintaining approved coastal zone management and/or restoration projects. Utilization of any and all rights derived under this lease by the mineral lessee, its agents, successors or assigns, shall not interfere with nor hinder the reasonable surface use by the Department of Natural Resources, its Offices or Commissions, as herein above reserved.

Applicant: ACL EXPLORATION, INC.

Bidder	Cash Payment	Price/ Acre	Rental	Oil	Gas	Other

Legend

- 06100019
- 06100019water
- SDE_BUS_83_ACTIVE_LEASES



TRACT 38621 - Portion of Blocks 22, and 25, Main Pass Area, Revised, Plaquemines Parish, Louisiana

All of the lands now or formerly constituting the beds and bottoms of all water bodies of every nature and description the title of which vests in the State of Louisiana, together with all islands arising therein and other lands formed by accretion or by reliction, where allowed by law, excepting tax adjudicated lands, and not presently under mineral lease and cross hatched on October 11, 2006, situated in Plaquemines Parish, Louisiana, and more particularly described as follows: Beginning at a point on the North line of Block 22, Main Pass Area, Revised, having Coordinates of X = 2,613,225.00 and Y = 337,080.00; thence South 14,750.00 feet to a point on the South line of said Block 22 having Coordinates of X = 2,613,225.00 and Y = 322,330.00; thence South 1,002.60 feet to a point on the East boundary of State Lease No. 16432 having Coordinates of X = 2,613,225.00 and Y = 321,327.40; thence along the boundary of said State Lease No. 16432 the following courses: North 53 degrees 54 minutes 06 seconds West 1,701.72 feet to its Northeast corner, also being a point on the South line of said Block 22 having Coordinates of X = 2,611,850.00 and Y = 322,330.00 and West 3,800.00 feet to the Northwest corner of said State Lease No. 16432 having Coordinates of X = 2,608,050.00 and Y = 322,330.00; thence West 2,200.00 feet along the South line of said Block 22 to its Southwest corner having Coordinates of X = 2,605,850.00 and Y = 322,330.00; thence North 14,750.00 feet along the West line of said Block 22 to its Northwest corner having Coordinates of X = 2,605,850.00 and Y = 337,080.00; thence East 7,375.00 feet along the North line of said Block 22 to the point of beginning, containing approximately **2,513.10 acres**, all as more particularly outlined on a plat on file in the Office of Mineral Resources, Department of Natural Resources. All bearings, distances and coordinates are based on Louisiana Coordinate System of 1927, (North or South Zone), where applicable.

NOTE: The above description of the Tract nominated for lease has been provided and corrected, where required, exclusively by the nomination party. Any mineral lease selected from this Tract and awarded by the Louisiana State Mineral Board shall be without warranty of any kind, either express, implied, or statutory, including, but not limited to, the implied warranties of merchantability and fitness for a particular purpose. Should the mineral lease awarded by the Louisiana State Mineral Board be subsequently modified, cancelled or abrogated due to the existence of conflicting leases, operating agreements, private claims or other future obligations or conditions which may affect all or any portion of the leased Tract, it shall not relieve the Lessee of the obligation to pay any bonus due thereon to the Louisiana State Mineral Board, nor shall the Louisiana State Mineral Board be obligated to refund any consideration paid by the Lessor prior to such modification, cancellation, or abrogation, including, but not limited to, bonuses, rentals and royalties.

NOTE: The State of Louisiana does hereby reserve, and this lease shall be subject to, the imprescriptible right of surface use in the nature of a

servitude in favor of the Department of Natural Resources, including its Offices and Commissions, for the sole purpose of implementing, constructing, servicing and maintaining approved coastal zone management and/or restoration projects. Utilization of any and all rights derived under this lease by the mineral lessee, its agents, successors or assigns, shall not interfere with nor hinder the reasonable surface use by the Department of Natural Resources, its Offices or Commissions, as herein above reserved.

Applicant: ENERGY PARTNERS, INC.

Bidder	Cash Payment	Price/ Acre	Rental	Oil	Gas	Other

Legend

06100038

Blocks

Active_Leases

