

TRACT 38592 - Bossier and Caddo Parishes, Louisiana

All of the lands now or formerly constituting the beds and bottoms of all water bodies of every nature and description the title of which vests in the State of Louisiana, together with all islands arising therein and other lands formed by accretion or by reliction, where allowed by law, excepting tax adjudicated lands, and not presently under mineral lease and cross hatched on October 11, 2006, situated in Bossier and Caddo Parishes, Louisiana, and more particularly described as follows: Beginning at a point having Coordinates of X = 1,597,345.15 and Y = 790,695.97; thence East 11,056.66 feet to a point having Coordinates of X = 1,608,401.81 and Y = 790,695.97; thence South 10,618.88 feet to a point having Coordinates of X = 1,608,401.81 and Y = 780,077.09; thence West 11,056.66 feet to a point having Coordinates of X = 1,597,345.15 and Y = 780,077.09; thence North 10,618.88 feet to the point of beginning, containing approximately **248 acres**, all as more particularly outlined on a plat on file in the Office of Mineral Resources, Department of Natural Resources. All bearings, distances and coordinates are based on Louisiana Coordinate System of 1927, (North or South Zone), where applicable.

NOTE: The above description of the Tract nominated for lease has been provided and corrected, where required, exclusively by the nomination party. Any mineral lease selected from this Tract and awarded by the Louisiana State Mineral Board shall be without warranty of any kind, either express, implied, or statutory, including, but not limited to, the implied warranties of merchantability and fitness for a particular purpose. Should the mineral lease awarded by the Louisiana State Mineral Board be subsequently modified, cancelled or abrogated due to the existence of conflicting leases, operating agreements, private claims or other future obligations or conditions which may affect all or any portion of the leased Tract, it shall not relieve the Lessee of the obligation to pay any bonus due thereon to the Louisiana State Mineral Board, nor shall the Louisiana State Mineral Board be obligated to refund any consideration paid by the Lessor prior to such modification, cancellation, or abrogation, including, but not limited to, bonuses, rentals and royalties.

Applicant: SOUTHERN MANAGEMENT SERVICES, INC.

Bidder	Cash Payment	Price/ Acre	Rental	Oil	Gas	Other

Legend

-  06100008
-  06100008water
-  Counties
- DOQQ2004**

BOSSIER PARISH

CADDO PARISH

T21N - R14W

P.O.B.

RED RIVER



TRACT 38593 - Caddo Parish, Louisiana

All of the lands now or formerly constituting the beds and bottoms of all water bodies of every nature and description the title of which vests in the State of Louisiana, together with all islands arising therein and other lands formed by accretion or by reliction, where allowed by law, excepting tax adjudicated lands, and not presently under mineral lease and cross hatched on October 11, 2006, situated in Caddo Parish, Louisiana, and more particularly described as follows: Beginning at a point having Coordinates of X = 1,629,550.00 and Y = 620,330.00; thence North 6,170.00 feet to a point having Coordinates of X = 1,629,550.00 and Y = 626,500.00; thence East 1,295.92 feet to a point having Coordinates of X = 1,630,845.92 and Y = 626,500.00; thence North 00 degrees 03 minutes 24 seconds East 1,100.00 feet to a point having Coordinates of X = 1,630,847.01 and Y = 627,600.00; thence East 4,027.99 feet to a point on the Western boundary of State Lease No. 11855 having Coordinates of X = 1,634,875.00 and Y = 627,600.00; thence South 36 degrees 52 minutes 12 seconds East 1,375.00 feet along the Western boundary of said State Lease No. 11855 to its Southern most corner having Coordinates of X = 1,635,700.00 and Y = 626,500.00; thence South 5,280.00 feet to the Northwest corner of State Lease No. 16717 having Coordinates of X = 1,635,700.00 and Y = 621,220.00; thence South 890.00 feet along the West boundary of said State Lease No. 16717 to a point having Coordinates of X = 1,635,700.00 and Y = 620,330.00; thence West 6,150.00 feet to the point of beginning, **LESS AND EXCEPT** any portions of State Lease No. 10965, as amended, and State Lease No. 18243 that may lie within the above described tract, containing approximately **10 acres**, all as more particularly outlined on a plat on file in the Office of Mineral Resources, Department of Natural Resources. All bearings, distances and coordinates are based on Louisiana Coordinate System of 1927, (North or South Zone), where applicable.

NOTE: The above description of the Tract nominated for lease has been provided and corrected, where required, exclusively by the nomination party. Any mineral lease selected from this Tract and awarded by the Louisiana State Mineral Board shall be without warranty of any kind, either express, implied, or statutory, including, but not limited to, the implied warranties of merchantability and fitness for a particular purpose. Should the mineral lease awarded by the Louisiana State Mineral Board be subsequently modified, cancelled or abrogated due to the existence of conflicting leases, operating agreements, private claims or other future obligations or conditions which may affect all or any portion of the leased Tract, it shall not relieve the Lessee of the obligation to pay any bonus due thereon to the Louisiana State Mineral Board, nor shall the Louisiana State Mineral Board be obligated to refund any consideration paid by the Lessor prior to such modification, cancellation, or abrogation, including, but not limited to, bonuses, rentals and royalties.

Applicant: THEOPHILUS OIL GAS & LAND SERVICES LLC

Bidder	Cash Payment	Price/ Acre	Rental	Oil	Gas	Other

Legend

 06100036

 06100036water

 Active_Leases

DOQQ2004

0

2,000 Feet

N



SL 11855

SL 18243

SL 10965

SL 16717

CADDO PARISH

T16N - R13W

P.O.B.

Office of Mineral Resources, Acres: 10 Tract Number: 38593

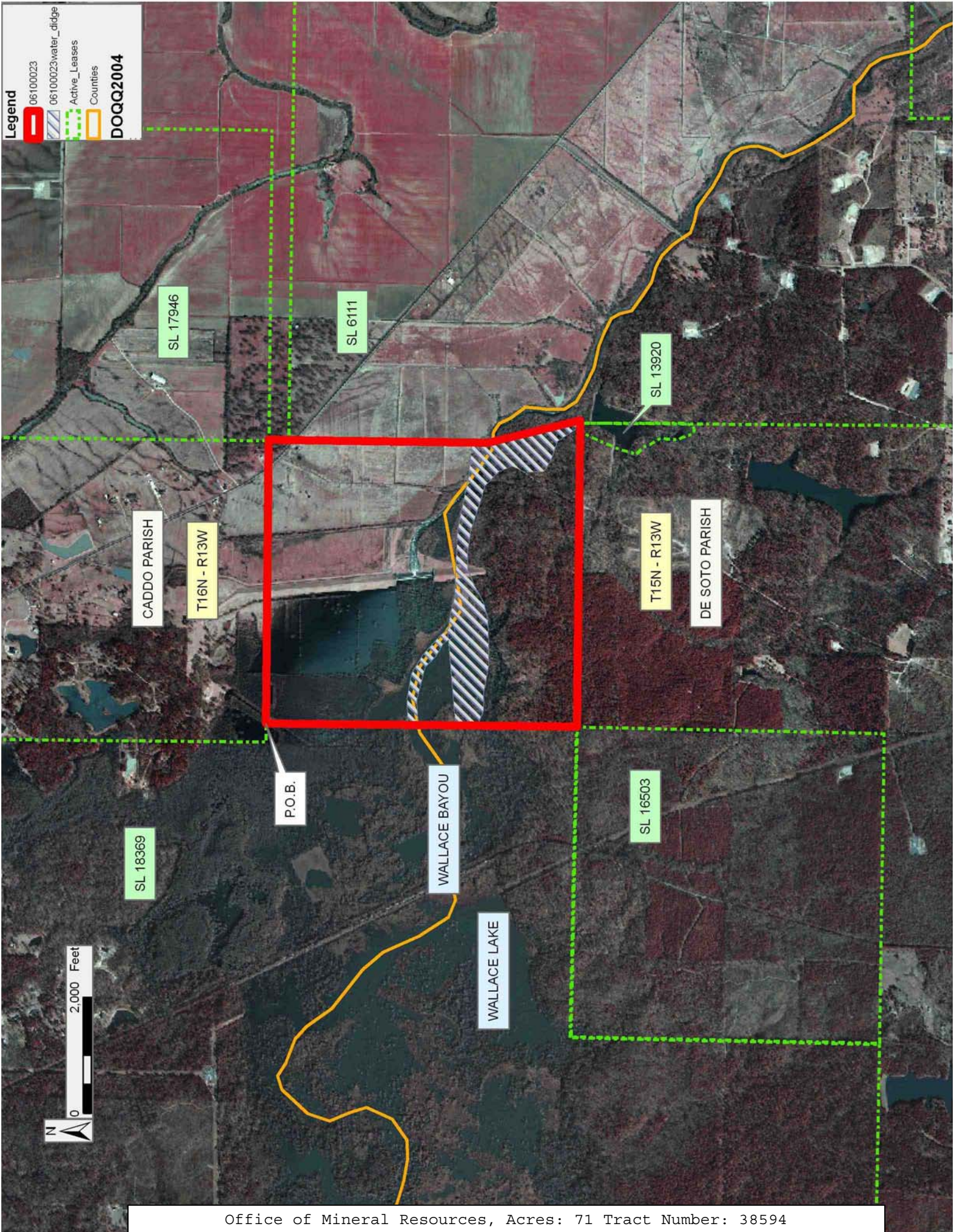
TRACT 38594 - Caddo and De Soto Parishes, Louisiana

All of the lands now or formerly constituting the beds and bottoms of all water bodies of every nature and description the title of which vests in the State of Louisiana, together with all islands arising therein and other lands formed by accretion or by reliction, where allowed by law, excepting tax adjudicated lands, and not presently under mineral lease and cross hatched on October 11, 2006, situated in Caddo and De Soto Parishes, Louisiana, and more particularly described as follows: Beginning at a point on the Eastern boundary of State Lease No. 18369 having Coordinates of X = 1,636,023.51 and Y = 605,380.00; thence East 4,866.49 feet to a point having Coordinates of X = 1,640,890.00 and Y = 605,380.00; thence Southerly approximately 342 feet to the Northwest corner of State Lease No. 6111; thence Southerly approximately 3,420 feet and Southeasterly approximately 1,625 feet along the Western boundary of said State Lease No. 6111 to the Northeast corner of State Lease No. 13920; thence Westerly approximately 207 feet along the North line of said State Lease No. 13920 to a point; thence Westerly approximately 5,046 feet to the most Easterly Southeast corner of said State Lease No. 18369, said corner also being the Northeast corner of State Lease No. 16503, having Coordinates of X = 1,636,023.51 and Y = 600,042.00; thence North 5,338.00 feet along the Eastern boundary of said State Lease No. 18369 to the Point of Beginning, **LESS AND EXCEPT** that portion, if any, of State Lease Nos. 6111, 13920 and 16503 that may lie within the above described tract, containing approximately **71 acres**, all as more particularly outlined on a plat on file in the Office of Mineral Resources, Department of Natural Resources. All bearings, distances and coordinates are based on Louisiana Coordinate System of 1927, (North or South Zone), where applicable.

NOTE: The above description of the Tract nominated for lease has been provided and corrected, where required, exclusively by the nomination party. Any mineral lease selected from this Tract and awarded by the Louisiana State Mineral Board shall be without warranty of any kind, either express, implied, or statutory, including, but not limited to, the implied warranties of merchantability and fitness for a particular purpose. Should the mineral lease awarded by the Louisiana State Mineral Board be subsequently modified, cancelled or abrogated due to the existence of conflicting leases, operating agreements, private claims or other future obligations or conditions which may affect all or any portion of the leased Tract, it shall not relieve the Lessee of the obligation to pay any bonus due thereon to the Louisiana State Mineral Board, nor shall the Louisiana State Mineral Board be obligated to refund any consideration paid by the Lessor prior to such modification, cancellation, or abrogation, including, but not limited to, bonuses, rentals and royalties.

Applicant: MCCLENDON & ASSOCIATES, LLC

Bidder	Cash Payment	Price/ Acre	Rental	Oil	Gas	Other



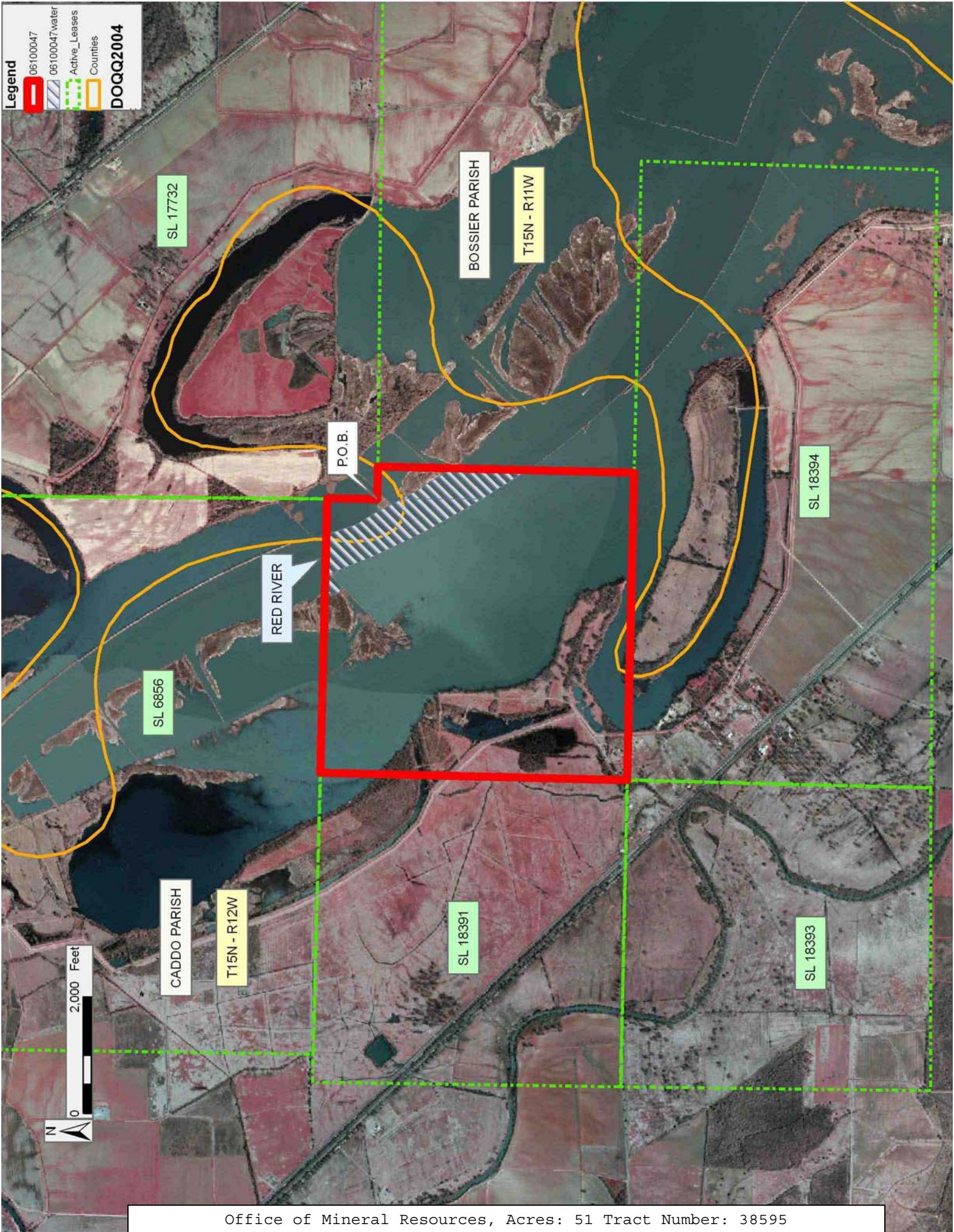
TRACT 38595 - Bossier and Caddo Parishes, Louisiana

All of the lands now or formerly constituting the beds and bottoms of all water bodies of every nature and description the title of which vests in the State of Louisiana, together with all islands arising therein and other lands formed by accretion or by reliction, where allowed by law, excepting tax adjudicated lands, and not presently under mineral lease and cross hatched on October 11, 2006, situated in Bossier and Caddo Parishes, Louisiana, and more particularly described as follows: Beginning at the Southwest corner of State Lease No. 17732 having Coordinates of X = 1,677,359.14 and Y = 598,434.05, thence East 557.17 feet along the South boundary of said State Lease No. 17732 to a point having Coordinates of X = 1,677,916.31 and Y = 598,434.05; thence South 00 degrees 47 minutes 39 seconds West 4,398.08 feet to a point on the North boundary of State Lease No. 18394 having Coordinates of X = 1,677,855.35 and Y = 594,036.39; thence North 89 degrees 12 minutes 21 seconds West 5,279.63 feet along the said North boundary of State Lease No. 18394 to its Northwest corner, also being the Northeast Corner of State Lease No. 18393 and the Southeast corner of State Lease No. 18391, having Coordinates of X = 1,672,576.23 and Y = 594,109.56; thence Northerly approximately 5,262 feet along the East boundary of said State Lease No. 18391 to its Northeast corner, also being a point on the South Boundary of State Lease No. 6856, as amended; thence Easterly approximately 4,713 feet along the South boundary of said State lease No. 6856, as amended, to its Southeast corner, also being a point on the West Boundary of said State Lease No. 17732; thence Southerly approximately 860 feet along the said West Boundary of said State Lease No. 17732 to the point of beginning, containing approximately **51 acres**, all as more particularly outlined on a plat on file in the Office of Mineral Resources, Department of Natural Resources. All bearings, distances and coordinates are based on Louisiana Coordinate System of 1927, (North or South Zone), where applicable.

NOTE: The above description of the Tract nominated for lease has been provided and corrected, where required, exclusively by the nomination party. Any mineral lease selected from this Tract and awarded by the Louisiana State Mineral Board shall be without warranty of any kind, either express, implied, or statutory, including, but not limited to, the implied warranties of merchantability and fitness for a particular purpose. Should the mineral lease awarded by the Louisiana State Mineral Board be subsequently modified, cancelled or abrogated due to the existence of conflicting leases, operating agreements, private claims or other future obligations or conditions which may affect all or any portion of the leased Tract, it shall not relieve the Lessee of the obligation to pay any bonus due thereon to the Louisiana State Mineral Board, nor shall the Louisiana State Mineral Board be obligated to refund any consideration paid by the Lessor prior to such modification, cancellation, or abrogation, including, but not limited to, bonuses, rentals and royalties.

Applicant: MANNA ACQUISITIONS, L.L.C.

Bidder	Cash Payment	Price/ Acre	Rental	Oil	Gas	Other



TRACT 38596 - De Soto and Red River Parishes, Louisiana

All of the lands now or formerly constituting the beds and bottoms of all water bodies of every nature and description the title of which vests in the State of Louisiana, together with all islands arising therein and other lands formed by accretion or by reliction, where allowed by law, excepting tax adjudicated lands, and not presently under mineral lease and cross hatched on October 11, 2006, situated in De Soto and Red River Parishes, Louisiana, and more particularly described as follows: Beginning at a point having Coordinates of X = 1,682,686.00 and Y = 546,348.00; thence North 10,646.00 feet to a point having Coordinates of X = 1,682,686.00 and Y = 556,994.00; thence East 15,840.00 feet to a point having Coordinates of X = 1,698,526.00 and Y = 556,994.00; thence South 10,646.00 feet to a point having Coordinates of X = 1,698,526.00 and Y = 546,348.00; thence West 15,840.00 feet to the point of beginning, containing approximately **35 acres**, all as more particularly outlined on a plat on file in the Office of Mineral Resources, Department of Natural Resources. All bearings, distances and coordinates are based on Louisiana Coordinate System of 1927, (North or South Zone), where applicable.

NOTE: The above description of the Tract nominated for lease has been provided and corrected, where required, exclusively by the nomination party. Any mineral lease selected from this Tract and awarded by the Louisiana State Mineral Board shall be without warranty of any kind, either express, implied, or statutory, including, but not limited to, the implied warranties of merchantability and fitness for a particular purpose. Should the mineral lease awarded by the Louisiana State Mineral Board be subsequently modified, cancelled or abrogated due to the existence of conflicting leases, operating agreements, private claims or other future obligations or conditions which may affect all or any portion of the leased Tract, it shall not relieve the Lessee of the obligation to pay any bonus due thereon to the Louisiana State Mineral Board, nor shall the Louisiana State Mineral Board be obligated to refund any consideration paid by the Lessor prior to such modification, cancellation, or abrogation, including, but not limited to, bonuses, rentals and royalties.

Applicant: REED DEVELOPMENT

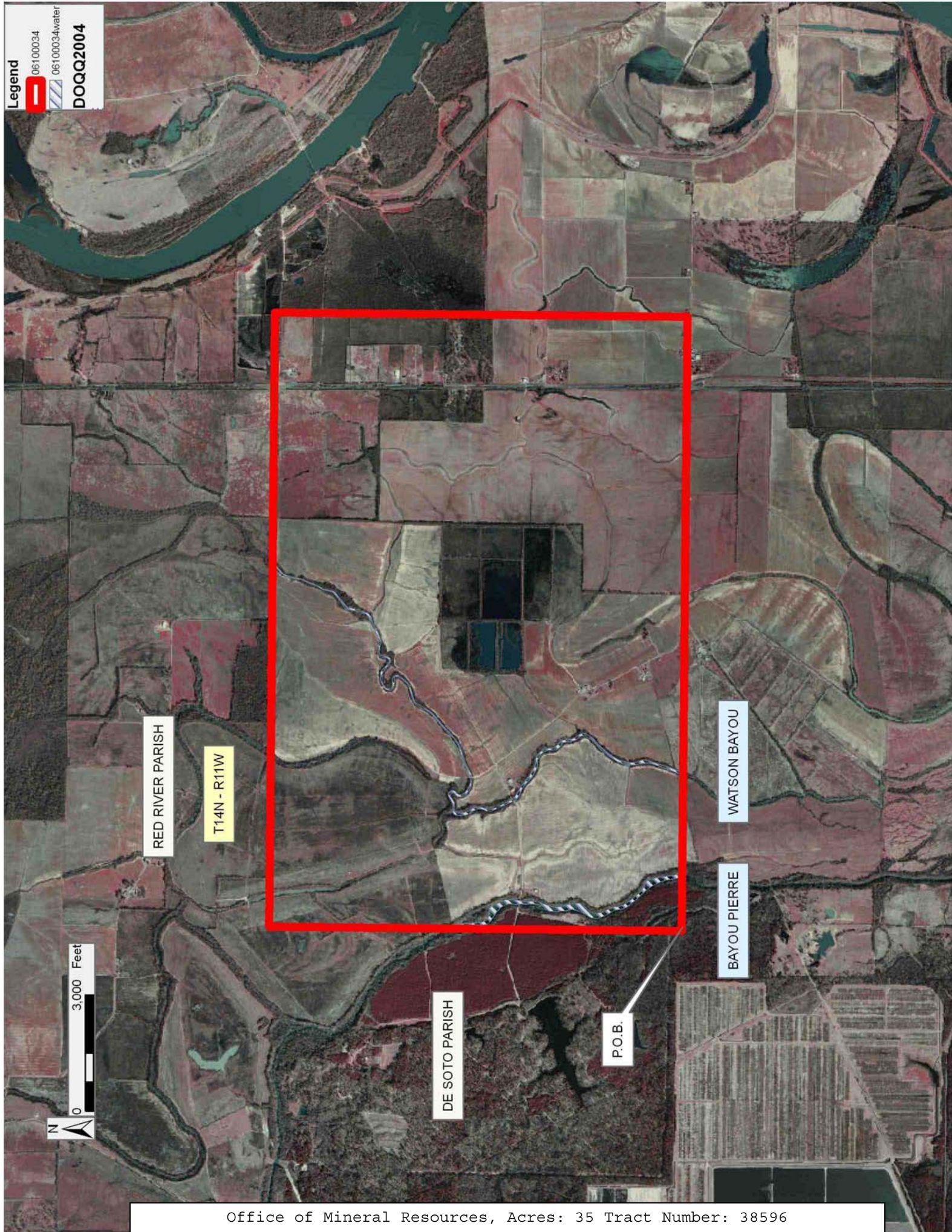
Bidder	Cash Payment	Price/ Acre	Rental	Oil	Gas	Other

Legend

06100034

06100034water

DOQQ2004



TRACT 38597 - De Soto and Red River Parishes, Louisiana

All of the lands now or formerly constituting the beds and bottoms of all water bodies of every nature and description the title of which vests in the State of Louisiana, together with all islands arising therein and other lands formed by accretion or by reliction, where allowed by law, excepting tax adjudicated lands, and not presently under mineral lease and cross hatched on October 11, 2006, situated in De Soto and Red River Parishes, Louisiana, and more particularly described as follows: Beginning at a point having Coordinates of X = 1,682,686.00 and Y = 546,348.00; thence East 15,840.00 feet to a point having Coordinates of X = 1,698,526.00 and Y = 546,348.00; thence South 10,646.00 feet to a point having Coordinates of X = 1,698,526.00 and Y = 535,702.00; thence West 15,840.00 feet to a point having Coordinates of X = 1,682,686.00 and Y = 535,702.00; thence North 10,646.00 feet to the point of beginning, containing approximately **53 acres**, all as more particularly outlined on a plat on file in the Office of Mineral Resources, Department of Natural Resources. All bearings, distances and coordinates are based on Louisiana Coordinate System of 1927, (North or South Zone), where applicable.

NOTE: The above description of the Tract nominated for lease has been provided and corrected, where required, exclusively by the nomination party. Any mineral lease selected from this Tract and awarded by the Louisiana State Mineral Board shall be without warranty of any kind, either express, implied, or statutory, including, but not limited to, the implied warranties of merchantability and fitness for a particular purpose. Should the mineral lease awarded by the Louisiana State Mineral Board be subsequently modified, cancelled or abrogated due to the existence of conflicting leases, operating agreements, private claims or other future obligations or conditions which may affect all or any portion of the leased Tract, it shall not relieve the Lessee of the obligation to pay any bonus due thereon to the Louisiana State Mineral Board, nor shall the Louisiana State Mineral Board be obligated to refund any consideration paid by the Lessor prior to such modification, cancellation, or abrogation, including, but not limited to, bonuses, rentals and royalties.

Applicant: REED DEVELOPMENT

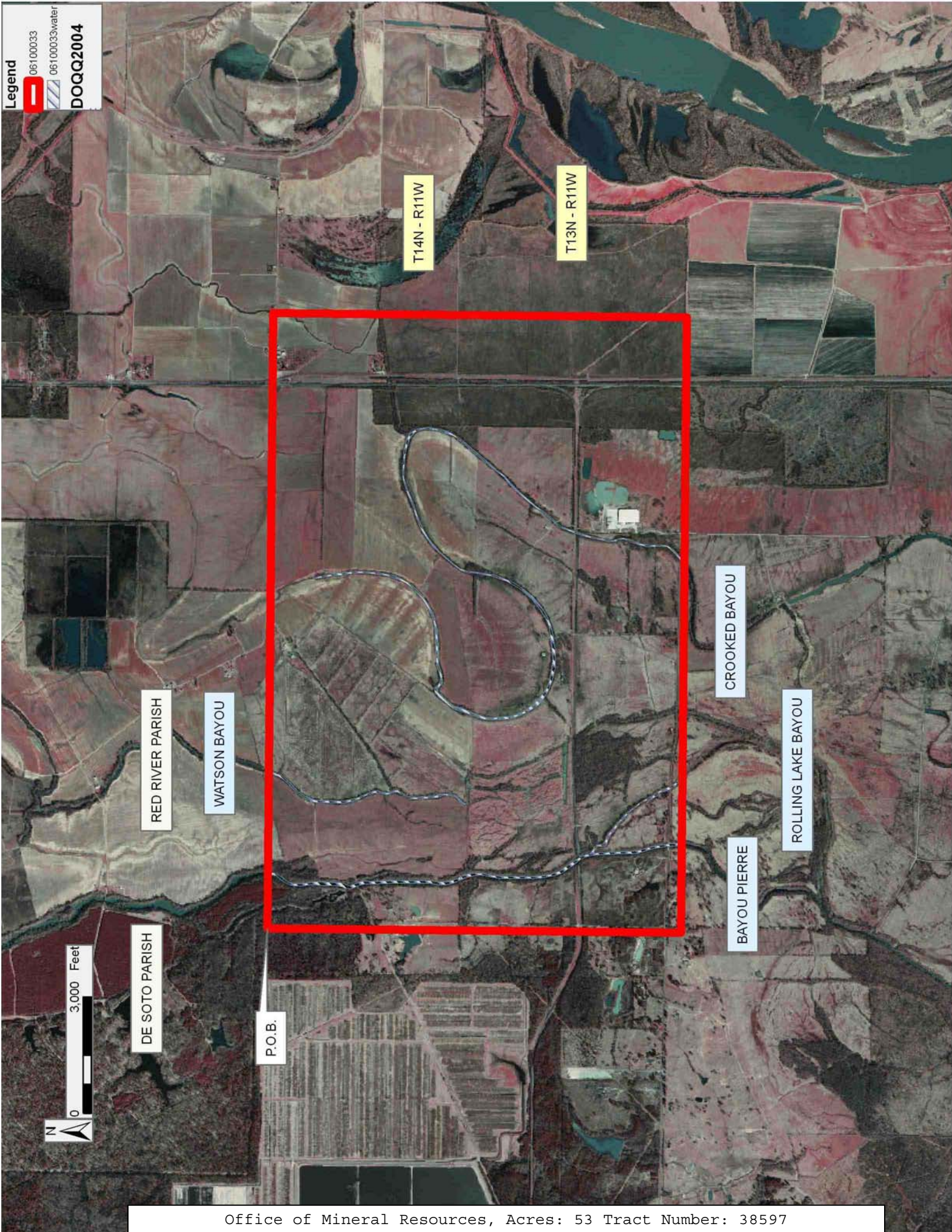
Bidder	Cash Payment	Price/ Acre	Rental	Oil	Gas	Other

Legend

06100033

06100033water

DOQQ2004



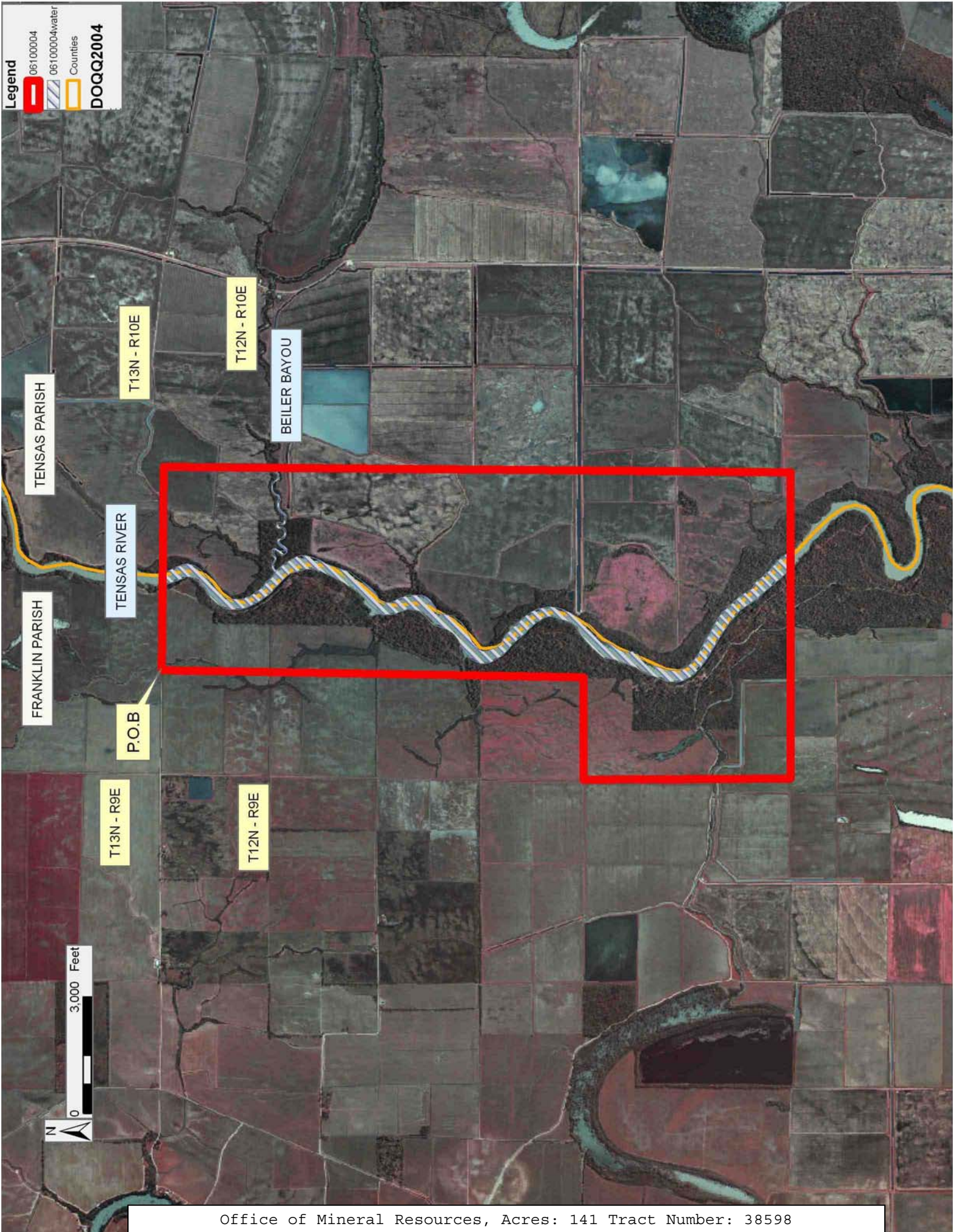
TRACT 38598 - Franklin and Tensas Parishes, Louisiana

All of the lands now or formerly constituting the beds and bottoms of all water bodies of every nature and description the title of which vests in the State of Louisiana, together with all islands arising therein and other lands formed by accretion or by reliction, where allowed by law, excepting tax adjudicated lands, and not presently under mineral lease and cross hatched on October 11, 2006, situated in Franklin and Tensas Parishes, Louisiana, and more particularly described as follows: Beginning at a point having Coordinates of X = 2,306,659.74 and Y = 507,405.49; thence North 89 degrees 58 minutes 12 seconds East 5,245.12 feet to a point having Coordinates of X = 2,311,904.86 and Y = 507,408.23; thence South 00 degrees 04 minutes 59 seconds East 16,123.63 feet to a point having Coordinates of X = 2,311,928.26 and Y = 491,284.62; thence South 89 degrees 14 minutes 43 seconds West 5,258.93 feet to a point having Coordinates of X = 2,306,669.78 and Y = 491,215.34; thence South 89 degrees 38 minutes 50 seconds West 2,625.73 feet to a point having Coordinates of X = 2,304,044.10 and Y = 491,199.17; thence North 00 degrees 54 minutes 37 seconds West 5,320.42 feet to a point having Coordinates of X = 2,303,959.59 and Y = 496,518.93; thence North 89 degrees 20 minutes 48 seconds East 2,636.51 feet to a point having Coordinates of X = 2,306,595.93 and Y = 496,548.99; thence North 00 degrees 20 minutes 12 seconds East 10,856.68 feet to the point of beginning containing approximately **141 acres**, all as more particularly outlined on a plat on file in the Office of Mineral Resources, Department of Natural Resources. All bearings, distances and coordinates are based on Louisiana Coordinate System of 1927, (North or South Zone), where applicable.

NOTE: The above description of the Tract nominated for lease has been provided and corrected, where required, exclusively by the nomination party. Any mineral lease selected from this Tract and awarded by the Louisiana State Mineral Board shall be without warranty of any kind, either express, implied, or statutory, including, but not limited to, the implied warranties of merchantability and fitness for a particular purpose. Should the mineral lease awarded by the Louisiana State Mineral Board be subsequently modified, cancelled or abrogated due to the existence of conflicting leases, operating agreements, private claims or other future obligations or conditions which may affect all or any portion of the leased Tract, it shall not relieve the Lessee of the obligation to pay any bonus due thereon to the Louisiana State Mineral Board, nor shall the Louisiana State Mineral Board be obligated to refund any consideration paid by the Lessor prior to such modification, cancellation, or abrogation, including, but not limited to, bonuses, rentals and royalties.

Applicant: VISION EXPLORATION, L.L.C.

Bidder	Cash Payment	Price/ Acre	Rental	Oil	Gas	Other



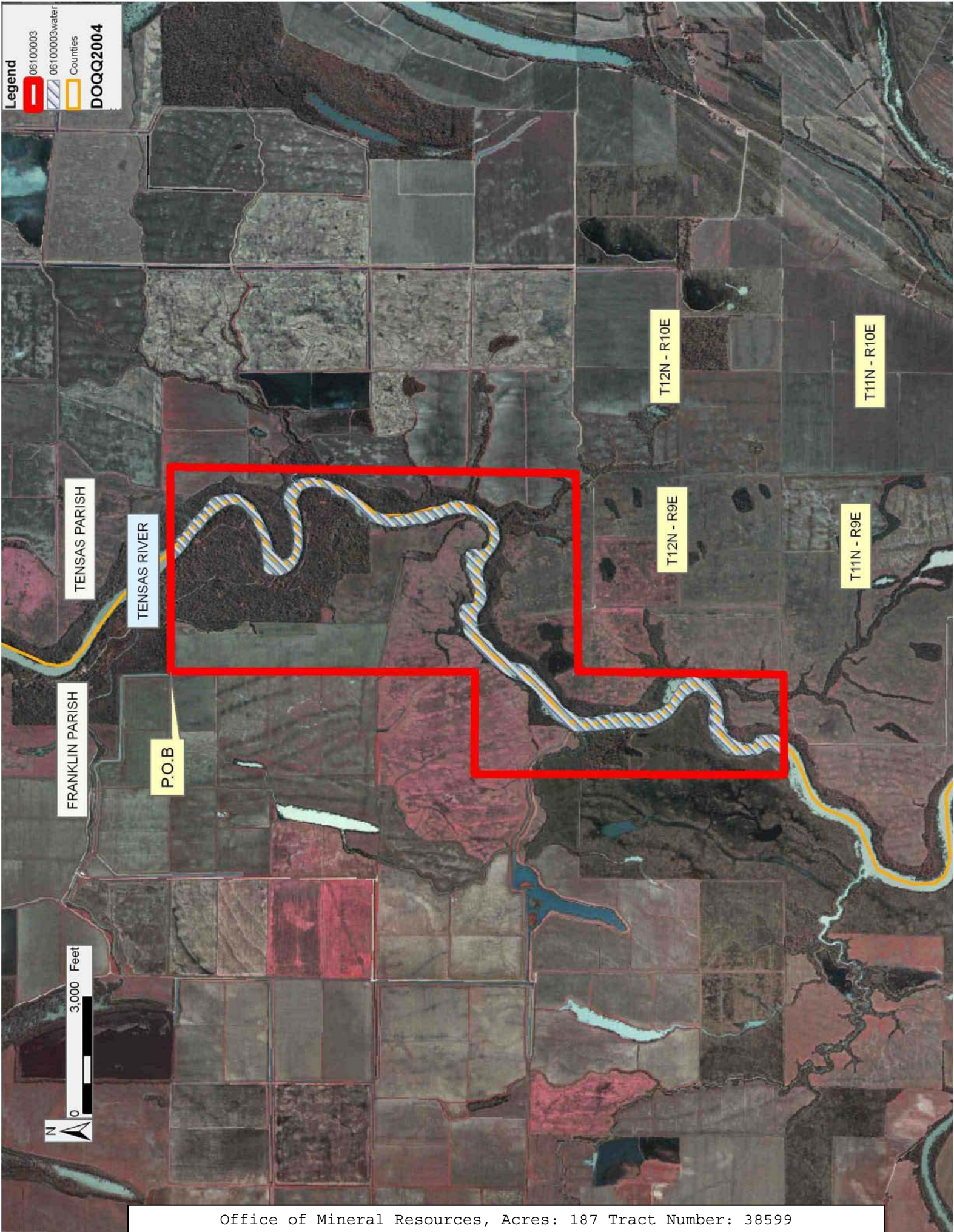
TRACT 38599 - Franklin and Tensas Parishes, Louisiana

All of the lands now or formerly constituting the beds and bottoms of all water bodies of every nature and description the title of which vests in the State of Louisiana, together with all islands arising therein and other lands formed by accretion or by reliction, where allowed by law, excepting tax adjudicated lands, and not presently under mineral lease and cross hatched on October 11, 2006, situated in Franklin and Tensas Parishes, Louisiana, and more particularly described as follows: Beginning at a point having Coordinates of X = 2,306,669.78 and Y = 491,215.34; thence North 89 degrees 19 minutes 02 seconds East 5,261.43 feet to a point having Coordinates of X = 2,311,930.84 and Y = 491,278.05; thence South 00 degrees 19 minutes 10 seconds West 10,437.09 feet to a point having Coordinates of X = 2,311,872.66 and Y = 480,841.12; thence South 88 degrees 43 minutes 33 seconds West 5,095.23 feet to a point having Coordinates of X = 2,306,778.69 and Y = 480,727.82; thence South 00 degrees 12 minutes 54 seconds West 5,288.44 feet to a point having Coordinates of X = 2,306,758.84 and Y = 475,439.42; thence South 89 degrees 07 minutes 48 seconds West 2,578.40 feet to a point having Coordinates of X = 2,304,180.73 and Y = 475,400.28; thence North 00 degrees 31 minutes 41 seconds West 7,969.16 feet to a point having Coordinates of X = 2,304,107.31 and Y = 483,369.10; thence North 89 degrees 40 minutes 08 seconds East 2,629.00 feet to a point having Coordinates of X = 2,306,736.26 and Y = 483,384.29; thence North 00 degrees 29 minutes 11 seconds West 7,831.34 feet to the point of beginning containing approximately **187 acres**, all as more particularly outlined on a plat on file in the Office of Mineral Resources, Department of Natural Resources. All bearings, distances and coordinates are based on Louisiana Coordinate System of 1927, (North or South Zone), where applicable.

NOTE: The above description of the Tract nominated for lease has been provided and corrected, where required, exclusively by the nomination party. Any mineral lease selected from this Tract and awarded by the Louisiana State Mineral Board shall be without warranty of any kind, either express, implied, or statutory, including, but not limited to, the implied warranties of merchantability and fitness for a particular purpose. Should the mineral lease awarded by the Louisiana State Mineral Board be subsequently modified, cancelled or abrogated due to the existence of conflicting leases, operating agreements, private claims or other future obligations or conditions which may affect all or any portion of the leased Tract, it shall not relieve the Lessee of the obligation to pay any bonus due thereon to the Louisiana State Mineral Board, nor shall the Louisiana State Mineral Board be obligated to refund any consideration paid by the Lessor prior to such modification, cancellation, or abrogation, including, but not limited to, bonuses, rentals and royalties.

Applicant: VISION EXPLORATION, L.L.C.

Bidder	Cash Payment	Price/ Acre	Rental	Oil	Gas	Other



TRACT 38600 - Calcasieu Parish, Louisiana

All of the lands now or formerly constituting the beds and bottoms of all water bodies of every nature and description the title of which vests in the State of Louisiana, together with all islands arising therein and other lands formed by accretion or by reliction, where allowed by law, excepting tax adjudicated lands, and not presently under mineral lease and cross hatched on October 11, 2006, situated in Calcasieu Parish, Louisiana, and more particularly described as follows: Beginning at a point having Coordinates of X = 1,369,227.70 and Y = 631,295.05; thence South 01 degrees 00 minutes 47 seconds West 2,638.46 feet to a point having Coordinates of X = 1,369,181.05 and Y = 628,657.00; thence North 89 degrees 58 minutes 04 seconds East 1,322.73 feet to a point having Coordinates of X = 1,370,503.78 and Y = 628,657.74; thence North 00 degrees 54 minutes 35 seconds East 2,643.35 feet to a point having Coordinates of X = 1,370,545.75 and Y = 631,300.76; thence North 01 degrees 14 minutes 25 seconds East 5,415.57 feet to a point having Coordinates of X = 1,370,662.99 and Y = 636,715.07; thence North 88 degrees 26 minutes 53 seconds West 1,316.92 feet to a point having Coordinates of X = 1,369,346.55 and Y = 636,750.74; thence South 01 degrees 14 minutes 53 seconds West 5,456.98 feet to the point of beginning, containing approximately **14 acres**, all as more particularly outlined on a plat on file in the Office of Mineral Resources, Department of Natural Resources. All bearings, distances and coordinates are based on Louisiana Coordinate System of 1927, (North or South Zone), where applicable.

NOTE: The above description of the Tract nominated for lease has been provided and corrected, where required, exclusively by the nomination party. Any mineral lease selected from this Tract and awarded by the Louisiana State Mineral Board shall be without warranty of any kind, either express, implied, or statutory, including, but not limited to, the implied warranties of merchantability and fitness for a particular purpose. Should the mineral lease awarded by the Louisiana State Mineral Board be subsequently modified, cancelled or abrogated due to the existence of conflicting leases, operating agreements, private claims or other future obligations or conditions which may affect all or any portion of the leased Tract, it shall not relieve the Lessee of the obligation to pay any bonus due thereon to the Louisiana State Mineral Board, nor shall the Louisiana State Mineral Board be obligated to refund any consideration paid by the Lessor prior to such modification, cancellation, or abrogation, including, but not limited to, bonuses, rentals and royalties.

Applicant: THUNDERBAY EXPLORATION, INC.

Bidder	Cash Payment	Price/ Acre	Rental	Oil	Gas	Other

Legend

- 06100024
- 06100024water
- Active_Leases
- Counties
- DOQQ2004

BEAUREGARD PARISH

T7S - R9W

T8S - R9W

CALCASIEU PARISH

SL 18452

BECKWITH CREEK

P.O.B.



TRACT 38601 - Lafayette and St. Martin Parishes, Louisiana

All of the lands now or formerly constituting the beds and bottoms of all water bodies of every nature and description the title of which vests in the State of Louisiana, together with all islands arising therein and other lands formed by accretion or by reliction, where allowed by law, excepting tax adjudicated lands, and not presently under mineral lease and cross hatched on October 11, 2006, situated in Lafayette and St. Martin Parishes, Louisiana, and more particularly described as follows: Beginning at the Northwest corner of State Lease No. 18952 having Coordinates of X = 1,808,000.00 and Y = 553,800.00; thence South 2,800.00 feet along the West boundary of said State Lease No. 18952 to its Southwest corner having Coordinates of X = 1,808,000.00 and Y = 551,000.00; thence South 2,630.00 feet to a point having Coordinates of X = 1,808,000.00 and Y = 548,370.00; thence West 6,500.00 feet to the Southeast corner of State Lease No. 18114 having Coordinates of X = 1,801,500.00 and Y = 548,370.00; thence North 5,430.00 feet along the East boundary of said State Lease No. 18114 to a point having Coordinates of X = 1,801,500.00 and Y = 553,800.00; thence East 6,500.00 feet to the point of beginning, containing approximately **14 acres**, all as more particularly outlined on a plat on file in the Office of Mineral Resources, Department of Natural Resources. All bearings, distances and coordinates are based on Louisiana Coordinate System of 1927, (North or South Zone), where applicable.

NOTE: The above description of the Tract nominated for lease has been provided and corrected, where required, exclusively by the nomination party. Any mineral lease selected from this Tract and awarded by the Louisiana State Mineral Board shall be without warranty of any kind, either express, implied, or statutory, including, but not limited to, the implied warranties of merchantability and fitness for a particular purpose. Should the mineral lease awarded by the Louisiana State Mineral Board be subsequently modified, cancelled or abrogated due to the existence of conflicting leases, operating agreements, private claims or other future obligations or conditions which may affect all or any portion of the leased Tract, it shall not relieve the Lessee of the obligation to pay any bonus due thereon to the Louisiana State Mineral Board, nor shall the Louisiana State Mineral Board be obligated to refund any consideration paid by the Lessor prior to such modification, cancellation, or abrogation, including, but not limited to, bonuses, rentals and royalties.

Applicant: FLEETWOOD RESOURCES, INC.

Bidder	Cash Payment	Price/ Acre	Rental	Oil	Gas	Other

Legend

- 06100025
- 06100025water
- Active_Leases
- Counties
- DOQQ2004

