

**TRACT 38589 - Portion of Block 77, Main Pass Area, Revised, Plaquemines Parish, Louisiana**

The beds and bottoms of all water bodies belonging to the State of Louisiana located in Block 77, Main Pass Area, Revised, together with any present lands formed by accretion to the shoreline or islands formed therein, located in Plaquemines Parish, Louisiana, owned by and not presently under mineral lease and cross hatched as of October 11, 2006, from the State of Louisiana, the geographical area of which is more fully described as follows: Beginning at the Northwest corner of State Lease No. 13718, as amended, having Coordinates of X = 2,763,508.00 and Y = 191,404.00; Thence North 6,045.09 feet along the West line of Block 77, Main Pass Area, Revised to the Southwest corner of State Lease No. 12457, as amended, having Coordinates of X = 2,763,508.00 and Y = 197,449.09; Thence South 73 degrees 58 minutes 18 seconds East 4,614.39 feet along the Southern boundary of said State Lease No. 12457, as amended, to a point having Coordinates of X = 2,767,943.01 and Y = 196,175.00; Thence South 75 degrees 34 minutes 45 seconds East 1,011.88 feet along the Southern boundary of said State Lease No. 12457, as amended, to a point having Coordinates of X = 2,768,923.01 and Y = 195,923.00; Thence along the Southern boundary of said State Lease No. 12457, as amended, on a curve to the left having a long chord of North 89 degrees 27 minutes 23 seconds East 1,792.08 feet, a radius of 3,295.00 feet and an arc length of 1,814.94 feet to a point having Coordinates of X = 2,770,715.00 and Y = 195,940.00; Thence North 80 degrees 05 minutes 42 seconds East 999.90 feet along the Southern boundary of said State Lease No. 12457, as amended, to a point having Coordinates of X = 2,771,700.00 and Y = 196,112.00; Thence East approximately 12 feet to a point on the three mile line having a Y Coordinate of 196,112.00; Thence along said three mile line Southwesterly along a curve to the right having a radius of 18,240.60 feet and a center at X = 2,755,178 and Y = 203,815 to a point having Coordinates of X = 2,770,763 and Y = 194,337; Thence continuing along said three mile line Southeasterly along a curve to the right having a radius of 18,240.60 feet and a center at X = 2,754,100 and Y = 186,915 to the Northeast corner of said State Lease No. 13718, as amended, having Coordinates of X = 2,771,780 and Y = 191,404; Thence leaving said three mile line West approximately 8,272 feet along the North boundary of said State Lease No. 13718, as amended, to the point of beginning, containing approximately **899 acres, LESS AND EXCEPT** that portion thereof, if any, lying seaward of the line three nautical miles from the coast line of Louisiana, as said three mile line has been decreed by the Supreme Court of the United States, as determined by a Special Master appointed therein, in litigation styled **United States v. State of Louisiana et al No. 9 Original**, in 1975, all as more particularly outlined on a plat in the Office of Mineral Resources, Department of Natural Resources. All bearings, distances and coordinates are based on the Louisiana Coordinate System of 1927, (South Zone).

NOTE: The above description of the Tract nominated for lease has been provided and corrected, where required, exclusively by the nomination party. Any mineral lease selected from this Tract and awarded by the

Louisiana State Mineral Board shall be without warranty of any kind, either express, implied, or statutory, including, but not limited to, the implied warranties of merchantability and fitness for a particular purpose. Should the mineral lease awarded by the Louisiana State Mineral Board be subsequently modified, cancelled or abrogated due to the existence of conflicting leases, operating agreements, private claims or other future obligations or conditions which may affect all or any portion of the leased Tract, it shall not relieve the Lessee of the obligation to pay any bonus due thereon to the Louisiana State Mineral Board, nor shall the Louisiana State Mineral Board be obligated to refund any consideration paid by the Lessor prior to such modification, cancellation, or abrogation, including, but not limited to, bonuses, rentals and royalties.

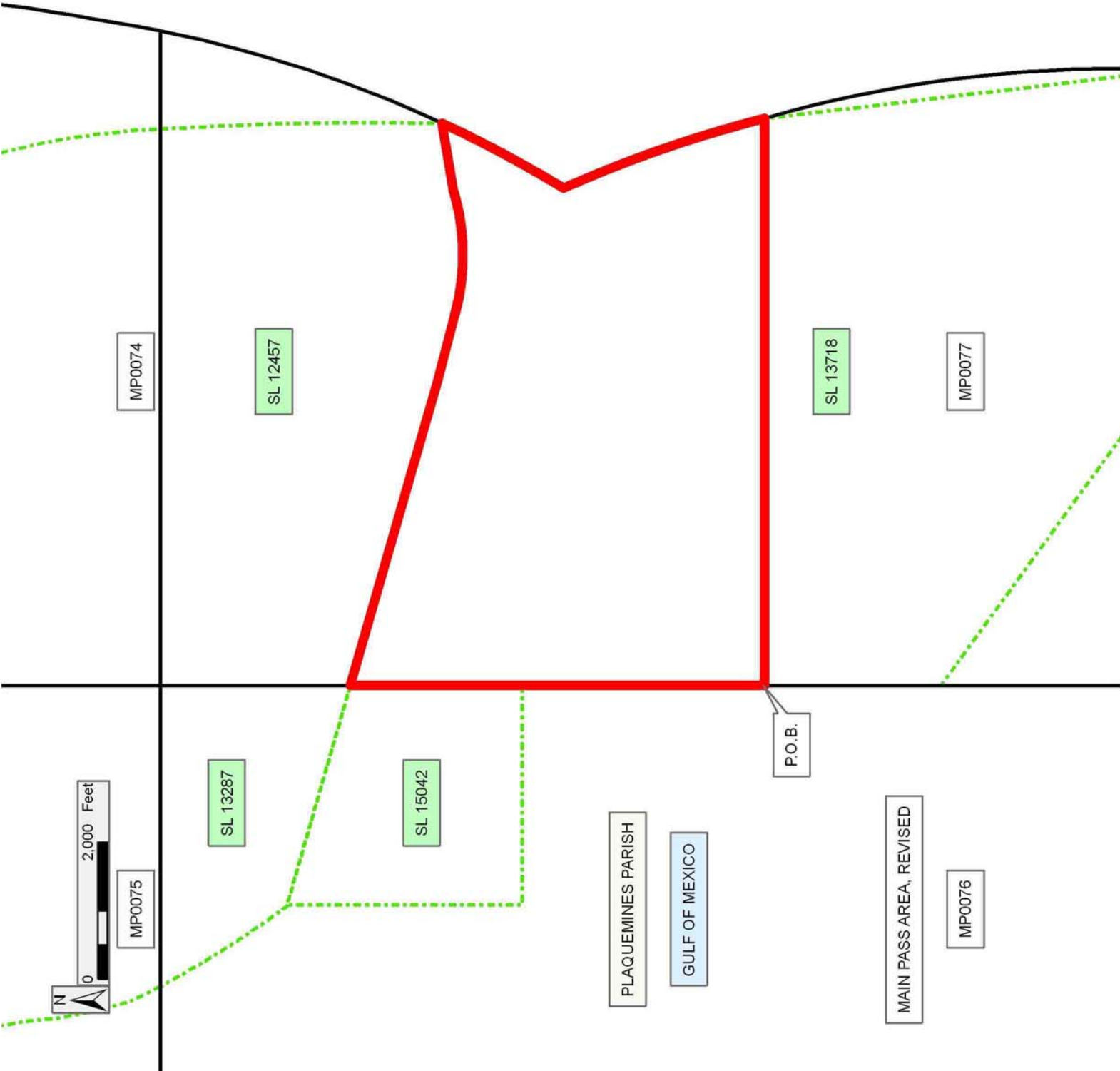
NOTE: The State of Louisiana does hereby reserve, and this lease shall be subject to, the imprescriptible right of surface use in the nature of a servitude in favor of the Department of Natural Resources, including its Offices and Commissions, for the sole purpose of implementing, constructing, servicing and maintaining approved coastal zone management and/or restoration projects. Utilization of any and all rights derived under this lease by the mineral lessee, its agents, successors or assigns, shall not interfere with nor hinder the reasonable surface use by the Department of Natural Resources, its Offices or Commissions, as herein above reserved.

Applicant: STARKS OIL CORPORATION

Bidder	Cash Payment	Price/Acre	Rental	Oil	Gas	Other

**Legend**

- 06100044
- Blocks
- Active\_Leases



**TRACT 38590 - Portion of Blocks 76, and 79, Main Pass Area, Revised, Plaquemines Parish, Louisiana**

The beds and bottoms of all water bodies belonging to the State of Louisiana located in Blocks 76, and 79, Main Pass Area, Revised, together with any present lands formed by accretion to the shoreline or islands formed therein, located in Plaquemines Parish, Louisiana, owned by and not presently under mineral lease as of October 11, 2006, from the State of Louisiana, the geographical area of which is more fully described as follows: Beginning at a Point having Coordinates of X = 2,757,407.86 and Y = 191,741.43; Thence South 8,460.99 feet to a point having Coordinates of X = 2,757,407.86 and Y = 183,280.44; Thence West approximately 3,720 feet to a point on the Louisiana Coastline having a Y Coordinate of 183,280.44; Thence along said coastline the following courses: Northeasterly, along a straight line, to a point having Coordinates of X = 2,753,885 and Y = 183,460; Northeasterly, along a straight line, to a point having Coordinates of X = 2,754,263 and Y = 186,316; Northwesterly, along a straight line, to a point having Coordinates of X = 2,754,100 and Y = 186,915; Northeasterly, along a straight line, to a point having a Y Coordinate of 191,741.43; Thence East approximately 3,000 feet to the point of beginning, containing approximately **627 acres**, all as more particularly outlined on a plat on file in the Office of Mineral Resources, Department of Natural Resources. All bearings, distances and coordinates are based on Louisiana Coordinate System of 1927, (North or South Zone).

NOTE: The above description of the Tract nominated for lease has been provided and corrected, where required, exclusively by the nomination party. Any mineral lease selected from this Tract and awarded by the Louisiana State Mineral Board shall be without warranty of any kind, either express, implied, or statutory, including, but not limited to, the implied warranties of merchantability and fitness for a particular purpose. Should the mineral lease awarded by the Louisiana State Mineral Board be subsequently modified, cancelled or abrogated due to the existence of conflicting leases, operating agreements, private claims or other future obligations or conditions which may affect all or any portion of the leased Tract, it shall not relieve the Lessee of the obligation to pay any bonus due thereon to the Louisiana State Mineral Board, nor shall the Louisiana State Mineral Board be obligated to refund any consideration paid by the Lessor prior to such modification, cancellation, or abrogation, including, but not limited to, bonuses, rentals and royalties.

NOTE: The State of Louisiana does hereby reserve, and this lease shall be subject to, the imprescriptible right of surface use in the nature of a servitude in favor of the Department of Natural Resources, including its Offices and Commissions, for the sole purpose of implementing, constructing, servicing and maintaining approved coastal zone management and/or restoration projects. Utilization of any and all rights derived under this lease by the mineral lessee, its agents, successors or assigns, shall not interfere with nor hinder the reasonable surface use by the

Department of Natural Resources, its Offices or Commissions, as herein above reserved.

Applicant: STARKS OIL CORPORATION

Bidder	Cash Payment	Price/Acre	Rental	Oil	Gas	Other



**TRACT 38591 - Portion of Blocks 76, 77, 78, and 79, Main Pass Area, Revised, Plaquemines Parish, Louisiana**

The beds and bottoms of all water bodies belonging to the State of Louisiana located in Blocks 76, 77, 78, and 79, Main Pass Area, Revised, together with any present lands formed by accretion to the shoreline or islands formed therein, located in Plaquemines Parish, Louisiana, owned by and not presently under mineral lease and cross hatched as of October 11, 2006, from the State of Louisiana, the geographical area of which is more fully described as follows: Beginning at a point having Coordinates of X = 2,757,407.86 and Y = 191,741.43; Thence East 6,100.14 feet to a point on the East line of Block 76, Main Pass Area, Revised, having Coordinates of X = 2,763,508.00 and Y = 191,741.43; Thence South 337.43 feet along the East line of said Block 76 to the Northwest corner of State Lease No. 13718, as amended, having Coordinates of X = 2,763,508.00 and Y = 191,404.00; Thence South 2,572.60 feet along the West boundary of said State Lease No. 13718, as amended, to a point having Coordinates of X = 2,763,508.00 and Y = 188,831.40; Thence South 54 degrees 00 minutes 00 seconds East 5,742.58 feet along the Southwest boundary of said State Lease No. 13718, as amended, to a point having Coordinates of X = 2,768,153.85 and Y = 185,456.00; Thence East approximately 4,329 feet along the South boundary of said State Lease No. 13718, as amended, to a point on the three mile line having a Y Coordinate of 185,456.00; Thence along said three mile line Southwesterly on an arc to the right having a radius of 18,240.60 feet and a center at X = 2,754,263 and Y = 186,316 to a point having a Y Coordinate of 183,280.44; Thence leaving said three mile line West approximately 14,841 feet to a point having Coordinates of X = 2,757,407.86 and Y = 183,280.44; Thence North 8,460.99 feet to the point of beginning, containing approximately **1,808 acres, LESS AND EXCEPT** that portion thereof, if any, lying seaward of the line three nautical miles from the coast line of Louisiana, as said three mile line has been decreed by the Supreme Court of the United States, as determined by a Special Master appointed therein, in litigation styled **United States v. State of Louisiana et al No. 9 Original**, in 1975, all as more particularly outlined on a plat in the Office of Mineral Resources, Department of Natural Resources. All bearings, distances and coordinates are based on the Louisiana Coordinate System of 1927, (South Zone).

NOTE: The above description of the Tract nominated for lease has been provided and corrected, where required, exclusively by the nomination party. Any mineral lease selected from this Tract and awarded by the Louisiana State Mineral Board shall be without warranty of any kind, either express, implied, or statutory, including, but not limited to, the implied warranties of merchantability and fitness for a particular purpose. Should the mineral lease awarded by the Louisiana State Mineral Board be subsequently modified, cancelled or abrogated due to the existence of conflicting leases, operating agreements, private claims or other future obligations or conditions which may affect all or any portion of the leased Tract, it shall not relieve the Lessee of the obligation to pay any bonus due thereon to the Louisiana State Mineral Board, nor shall

the Louisiana State Mineral Board be obligated to refund any consideration paid by the Lessor prior to such modification, cancellation, or abrogation, including, but not limited to, bonuses, rentals and royalties.




NOTE: The State of Louisiana does hereby reserve, and this lease shall be subject to, the imprescriptible right of surface use in the nature of a servitude in favor of the Department of Natural Resources, including its Offices and Commissions, for the sole purpose of implementing, constructing, servicing and maintaining approved coastal zone management and/or restoration projects. Utilization of any and all rights derived under this lease by the mineral lessee, its agents, successors or assigns, shall not interfere with nor hinder the reasonable surface use by the Department of Natural Resources, its Offices or Commissions, as herein above reserved.

Applicant: STARKS OIL CORPORATION

Bidder	Cash Payment	Price/Acre	Rental	Oil	Gas	Other



**Legend**

-  06100045
-  Blocks
-  Active\_Leases

PLAQUEMINES PARISH

MAIN PASS AREA, REVISED

MP0077

GULF OF MEXICO

SL 13718

MP0078



MP0076

P.O.B.

MP0079