

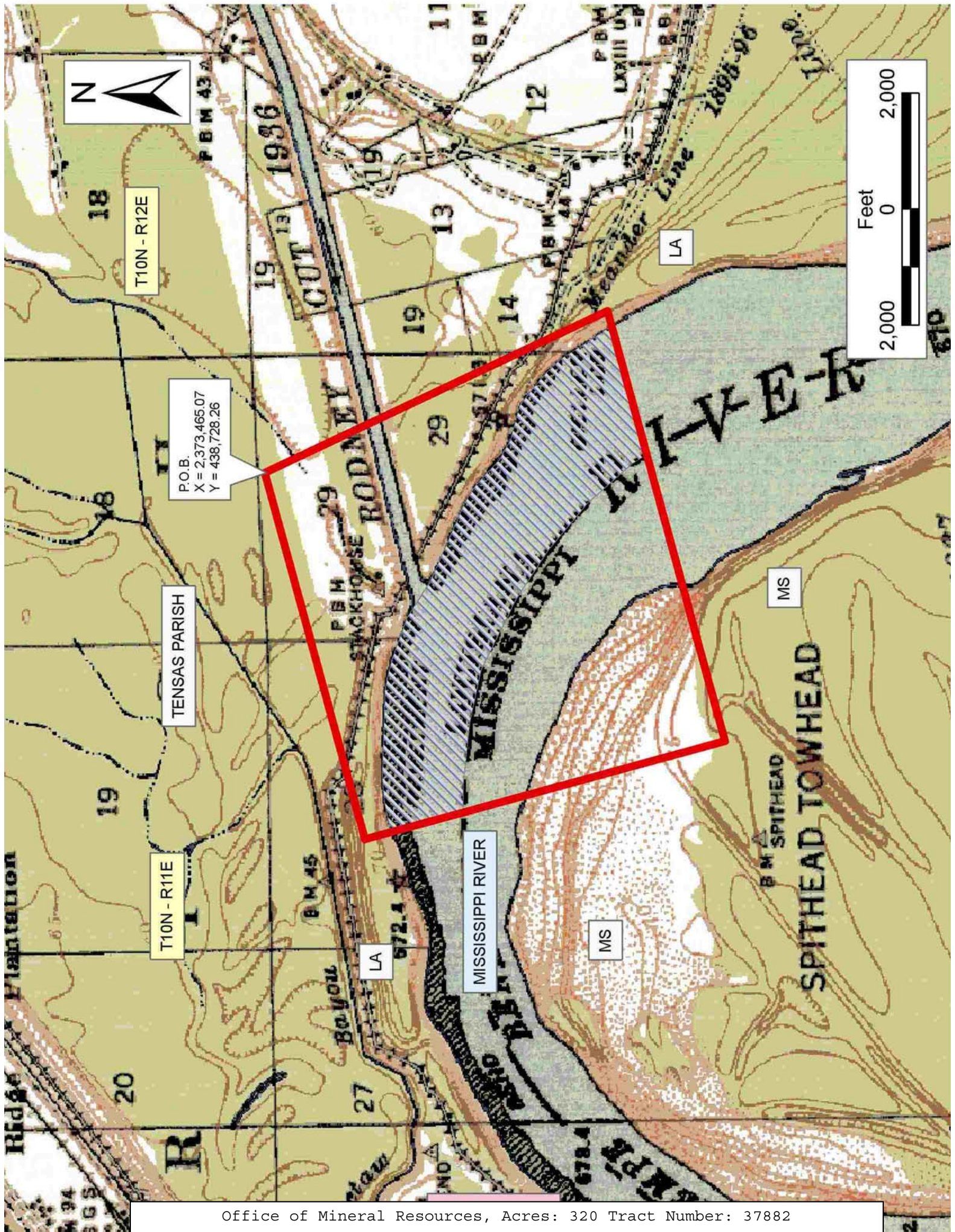
TRACT 37882 - Tensas Parish, Louisiana

All of the lands now or formerly constituting the beds and bottoms of all water bodies of every nature and description the title of which vests in the State of Louisiana, together with all islands arising therein and other lands formed by accretion or by reliction, where allowed by law, excepting tax adjudicated lands, and not presently under mineral lease on October 12, 2005, situated in Tensas Parish, Louisiana, and more particularly described as follows: Beginning at a point having Coordinates of X = 2,373,465.07 and Y = 438,728.26; thence South 25 degrees 00 minutes 00 seconds East 6536.59 feet to a point having Coordinates of X = 2,376,227.55 and Y = 432,804.10; thence South 75 degrees 00 minutes 00 seconds West 7693.44 feet to a point having Coordinates of X = 2,368,796.26 and Y = 430,812.89; thence North 15 degrees 00 minutes 00 seconds West 6437.28 feet to a point having Coordinates of X = 2,367,130.17 and Y = 437,030.83; thence North 75 degrees 00 minutes 00 seconds East 6558.37 feet to the point of beginning, containing approximately **320 acres**, all as more particularly outlined on a plat on file in the Office of Mineral Resources, Department of Natural Resources. All bearings, distances and coordinates are based on Louisiana Coordinate System of 1927, (North or South Zone), where applicable.

NOTE: The above description of the Tract nominated for lease has been provided and corrected, where required, exclusively by the nomination party. Any mineral lease selected from this Tract and awarded by the Louisiana State Mineral Board shall be without warranty of any kind, either express, implied, or statutory, including, but not limited to, the implied warranties of merchantability and fitness for a particular purpose. Should the mineral lease awarded by the Louisiana State Mineral Board be subsequently modified, cancelled or abrogated due to the existence of conflicting leases, operating agreements, private claims or other future obligations or conditions which may affect all or any portion of the leased Tract, it shall not relieve the Lessee of the obligation to pay any bonus due thereon to the Louisiana State Mineral Board, nor shall the Louisiana State Mineral Board be obligated to refund any consideration paid by the Lessor prior to such modification, cancellation, or abrogation, including, but not limited to, bonuses, rentals and royalties.

Applicant: FRUSTUM RESOURCES

Bidder	Cash Payment	Price/Acre	Rental	Oil	Gas	Other



P.O.B.
X = 2,373,465.07
Y = 438,728.26

T10N - R12E

TENSAS PARISH

T10N - R11E

MISSISSIPPI RIVER

MS

MS

LA

LA

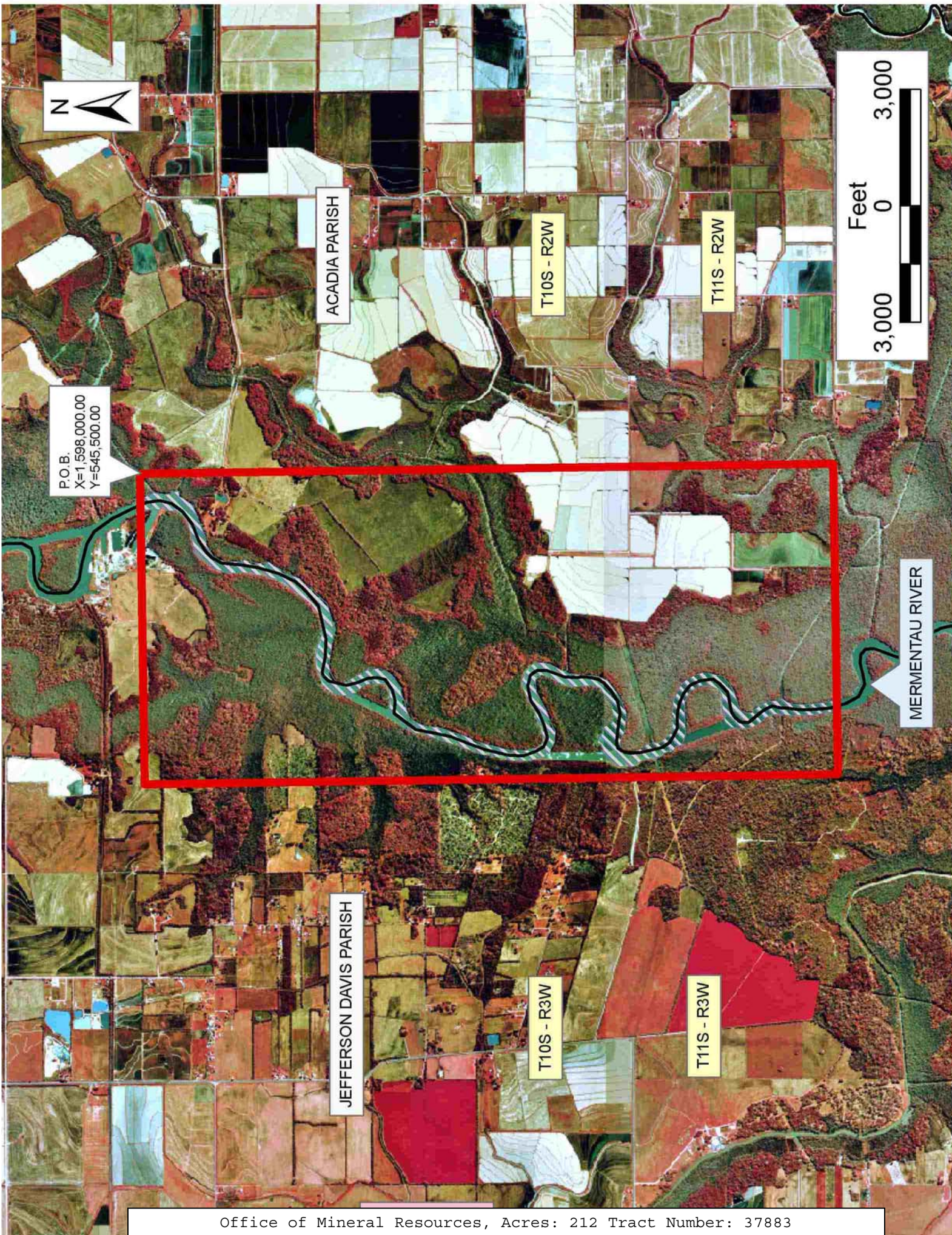
TRACT 37883 - Acadia and Jefferson Davis Parishes, Louisiana

All of the lands now or formerly constituting the beds and bottoms of all water bodies of every nature and description the title of which vests in the State of Louisiana, together with all islands arising therein and other lands formed by accretion or by reliction, where allowed by law, excepting tax adjudicated lands, and not presently under mineral lease on October 12, 2005, situated in Acadia and Jefferson Davis Parishes, Louisiana, and more particularly described as follows: Beginning at a point having Coordinates of X = 1,598,000.00 and Y = 545,500.00; thence South 17,860.00 feet to a point having Coordinates of X = 1,598,000.00 and Y = 527,640.00; thence West 8,000.00 feet to a point having Coordinates of X = 1,590,000.00 and Y = 527,640.00; thence North 17,860.00 feet to a point having Coordinates of X = 1,590,000.00 and Y = 545,500.00; thence East 8,000.00 to the point of beginning, containing approximately **212 acres**, all as more particularly outlined on a plat on file in the Office of Mineral Resources, Department of Natural Resources. All bearings, distances and coordinates are based on Louisiana Coordinate System of 1927, (North or South Zone), where applicable.

NOTE: The above description of the Tract nominated for lease has been provided and corrected, where required, exclusively by the nomination party. Any mineral lease selected from this Tract and awarded by the Louisiana State Mineral Board shall be without warranty of any kind, either express, implied, or statutory, including, but not limited to, the implied warranties of merchantability and fitness for a particular purpose. Should the mineral lease awarded by the Louisiana State Mineral Board be subsequently modified, cancelled or abrogated due to the existence of conflicting leases, operating agreements, private claims or other future obligations or conditions which may affect all or any portion of the leased Tract, it shall not relieve the Lessee of the obligation to pay any bonus due thereon to the Louisiana State Mineral Board, nor shall the Louisiana State Mineral Board be obligated to refund any consideration paid by the Lessor prior to such modification, cancellation, or abrogation, including, but not limited to, bonuses, rentals and royalties.

Applicant: HEP ENERGY, INC.

Bidder	Cash Payment	Price/Acre	Rental	Oil	Gas	Other



P.O.B.
X=1,598,000.00
Y=545,500.00

ACADIA PARISH

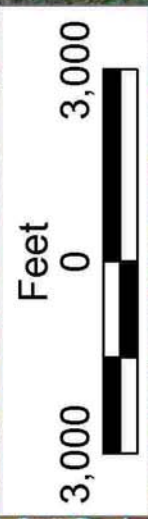
T10S - R2W

T11S - R2W

JEFFERSON DAVIS PARISH

T10S - R3W

T11S - R3W



MERMENTAU RIVER

TRACT 37884 - Iberia Parish, Louisiana

All of the lands now or formerly constituting the beds and bottoms of all water bodies of every nature and description the title of which vests in the State of Louisiana, together with all islands arising therein and other lands formed by accretion or by reliction, where allowed by law, excepting tax adjudicated lands, and not presently under mineral lease on October 12, 2005, situated in Iberia Parish, Louisiana, and more particularly described as follows: Beginning at a point having Coordinates of X = 1,997,307.00 and Y = 484,987.10; thence North 89 degrees 36 minutes 02 seconds East 1,353.77 feet to a point on the West boundary of State Lease No. 18070 having Coordinates of X = 1,998,660.74 and Y = 484,996.54; thence along the West and South boundary of said State Lease No. 18070 the following courses: South 2,068.01 feet to a point having Coordinates of X = 1,998,660.74 and Y = 482,928.53, South 00 degrees 34 minutes 01 seconds East 600.00 feet to its Southwest corner having Coordinates of X = 1,998,666.68 and Y = 482,328.56, North 89 degrees 35 minutes 40 seconds East 666.61 feet to a point having Coordinates of X = 1,999,333.27 and Y = 482,333.27 and East 4,227.47 feet to its Southeast corner, having Coordinates of X = 2,003,560.74 and Y = 482,333.27; thence South approximately 1296 feet along a projection of the East boundary of said State Lease No. 18070 to a point on the North boundary of State Lease No. 2655 having a Coordinate of X = 2,003,560.74; thence along the boundary of said State Lease No. 2655 the following courses: Westerly approximately 2,212 feet to its most Northern Northwest corner, Southerly approximately 1,327 feet to a corner and Westerly approximately 1,336 feet to its most Westerly Northwest corner; thence Westerly approximately 2,673 feet to a point having Coordinates of X = 1,997,353.60 and Y = 479,651.10; thence North 00 degrees 30 minutes 01 seconds West 5,336.20 feet to the point of beginning, **LESS AND EXCEPT** any portion of State Lease No. 2655 and State Lease No. 18258 that may lie within the above described tract, containing approximately **6 acres**, all as more particularly outlined on a plat on file in the Office of Mineral Resources, Department of Natural Resources. All bearings, distances and coordinates are based on Louisiana Coordinate System of 1927, (North or South Zone), where applicable.

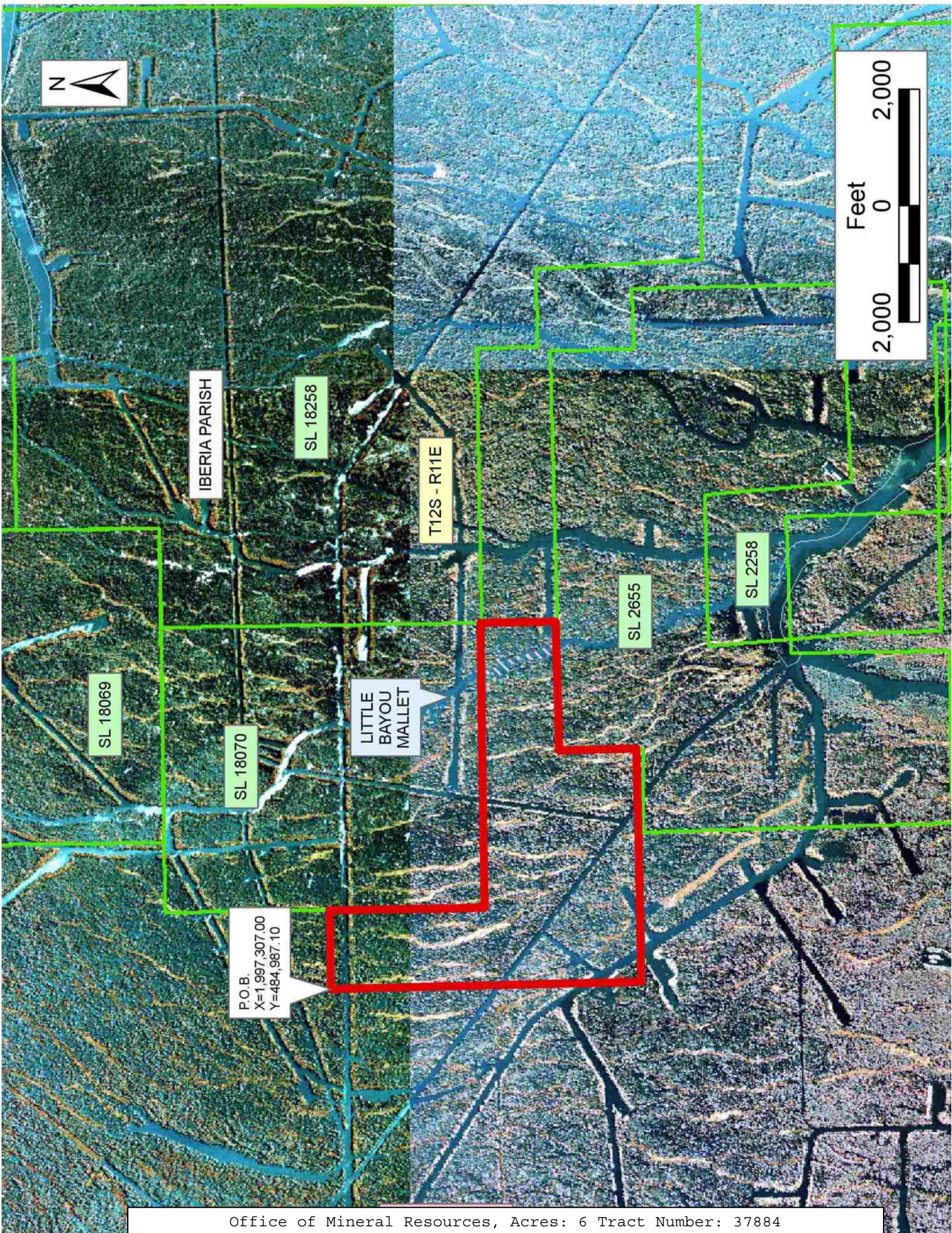
NOTE: The above description of the Tract nominated for lease has been provided and corrected, where required, exclusively by the nomination party. Any mineral lease selected from this Tract and awarded by the Louisiana State Mineral Board shall be without warranty of any kind, either express, implied, or statutory, including, but not limited to, the implied warranties of merchantability and fitness for a particular purpose. Should the mineral lease awarded by the Louisiana State Mineral Board be subsequently modified, cancelled or abrogated due to the existence of conflicting leases, operating agreements, private claims or other future obligations or conditions which may affect all or any portion of the leased Tract, it shall not relieve the Lessee of the obligation to pay any bonus due thereon to the Louisiana State Mineral Board, nor shall the Louisiana State Mineral Board be obligated to refund any consideration

paid by the Lessor prior to such modification, cancellation, or abrogation, including, but not limited to, bonuses, rentals and royalties.

NOTE: The State of Louisiana does hereby reserve, and this lease shall be subject to, the imprescriptible right of surface use in the nature of a servitude in favor of the Department of Natural Resources, including its Offices and Commissions, for the sole purpose of implementing, constructing, servicing and maintaining approved coastal zone management and/or restoration projects. Utilization of any and all rights derived under this lease by the mineral lessee, its agents, successors or assigns, shall not interfere with nor hinder the reasonable surface use by the Department of Natural Resources, its Offices or Commissions, as herein above reserved.

Applicant: MIDNITE ENERGY, INC.

Bidder	Cash Payment	Price/Acre	Rental	Oil	Gas	Other



TRACT 37885 - Portion of Block 68, Chandeleur Sound Area, St. Bernard Parish, Louisiana

All of the lands now or formerly constituting the beds and bottoms of all water bodies of every nature and description the title of which vests in the State of Louisiana, together with all islands arising therein and other lands formed by accretion or by reliction, where allowed by law, excepting tax adjudicated lands, and not presently under mineral lease on October 12, 2005, situated in St. Bernard Parish, Louisiana, and more particularly described as follows: Beginning at a point on the North line of Block 68, Chandeleur Sound Area, having Coordinates of X = 2,660,275.00 and Y = 396,080.00; thence South 4,550.00 feet to the Northwest corner of State Lease No. 17122 having Coordinates of X = 2,660,275.00 and Y = 391,530.00; thence South 5,400.00 feet along the West line of said State Lease No. 17122 to its Southwest corner having Coordinates of X = 2,660,275.00 and Y = 386,130.00; thence West 10,175.00 feet to a point on the West line of said Block 68 having Coordinates of X = 2,650,100.00 and Y = 386,130.00; thence North 9,950.00 feet along the West line of said Block 68 to its Northwest corner having Coordinates of X = 2,650,100.00 and Y = 396,080.00; thence East 10,175.00 feet along the North line of said Block 68 to the point of beginning, containing **2,324.18 acres**, all as more particularly outlined on a plat on file in the Office of Mineral Resources, Department of Natural Resources. All bearings, distances and coordinates are based on Louisiana Coordinate System of 1927, (North or South Zone), where applicable.

NOTE: The above description of the Tract nominated for lease has been provided and corrected, where required, exclusively by the nomination party. Any mineral lease selected from this Tract and awarded by the Louisiana State Mineral Board shall be without warranty of any kind, either express, implied, or statutory, including, but not limited to, the implied warranties of merchantability and fitness for a particular purpose. Should the mineral lease awarded by the Louisiana State Mineral Board be subsequently modified, cancelled or abrogated due to the existence of conflicting leases, operating agreements, private claims or other future obligations or conditions which may affect all or any portion of the leased Tract, it shall not relieve the Lessee of the obligation to pay any bonus due thereon to the Louisiana State Mineral Board, nor shall the Louisiana State Mineral Board be obligated to refund any consideration paid by the Lessor prior to such modification, cancellation, or abrogation, including, but not limited to, bonuses, rentals and royalties.

NOTE: The Office of Mineral Resources will require a minimum bonus of \$190 per acre and a minimum royalty of 22%.

NOTE: The State of Louisiana does hereby reserve, and this lease shall be subject to, the imprescriptible right of surface use in the nature of a servitude in favor of the Department of Natural Resources, including its Offices and Commissions, for the sole purpose of implementing, constructing, servicing and maintaining approved coastal zone management

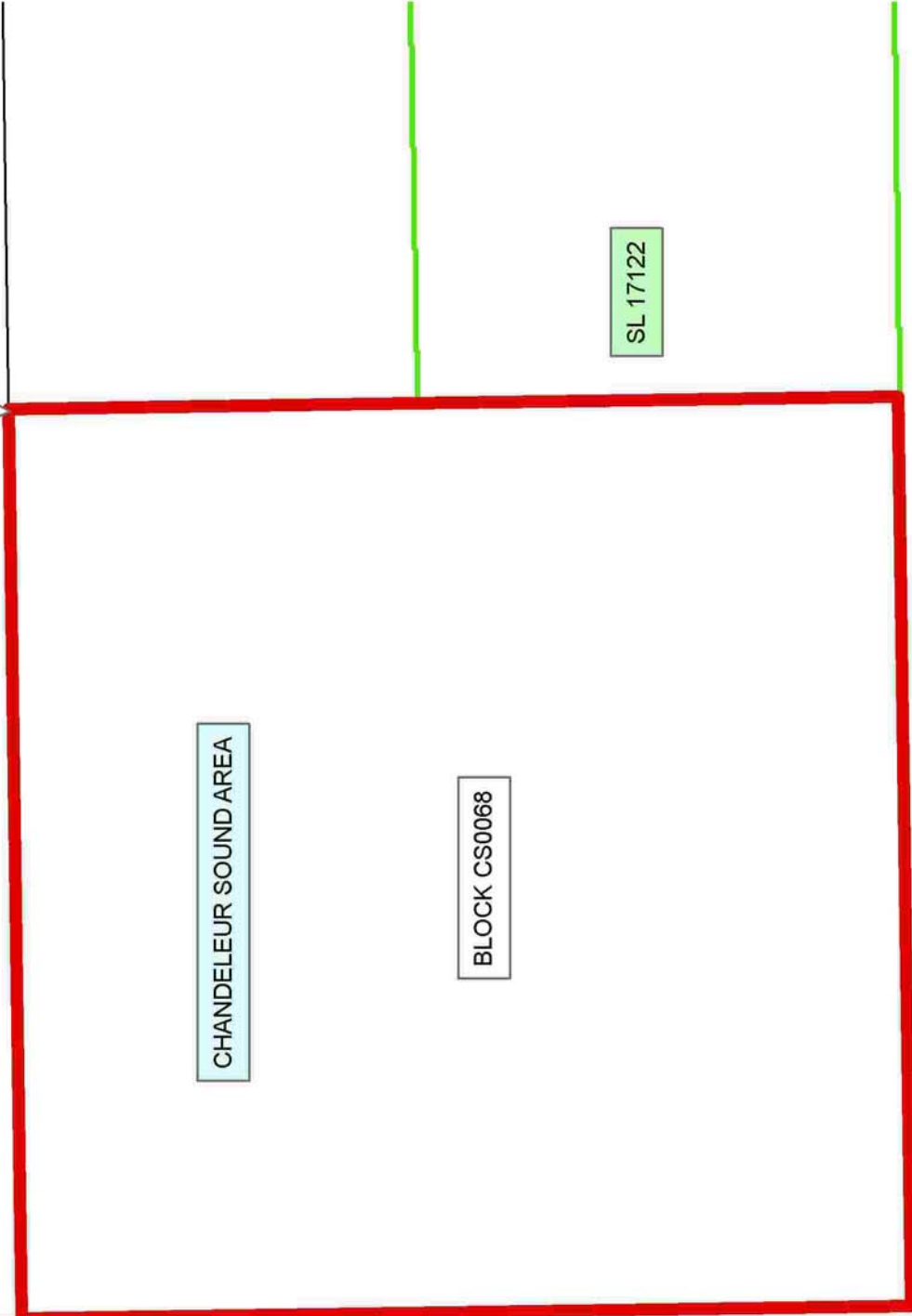
and/or restoration projects. Utilization of any and all rights derived under this lease by the mineral lessee, its agents, successors or assigns, shall not interfere with nor hinder the reasonable surface use by the Department of Natural Resources, its Offices or Commissions, as herein above reserved.

Applicant: HILLS INDEPENDENT OIL CO.

Bidder	Cash Payment	Price/Acre	Rental	Oil	Gas	Other



P.O.B.
X=2,660,275.00
Y=396,080.00



ST BERNARD PARISH

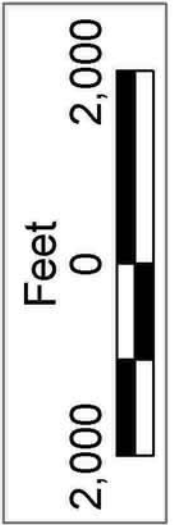
BLOCK CS0069

CHANDELEUR SOUND AREA

BLOCK CS0068

SL 17122

SL 16799



TRACT 37886 - Portion of Blocks 67, and 68, Chandeleur Sound Area, St. Bernard Parish, Louisiana

All of the lands now or formerly constituting the beds and bottoms of all water bodies of every nature and description the title of which vests in the State of Louisiana, together with all islands arising therein and other lands formed by accretion or by reliction, where allowed by law, excepting tax adjudicated lands, and not presently under mineral lease on October 12, 2005, situated in St. Bernard Parish, Louisiana, and more particularly described as follows: Beginning at a point on the North line of Block 68, Chandeleur Sound Area, having Coordinates of X = 2,660,275.00 and Y = 396,080.00; thence East 4,575.00 feet along the North line of said Block 68 to its Northeast corner, said corner also being the Northwest corner of Block 67, Chandeleur Sound Area, having Coordinates of X = 2,664,850.00 and Y = 396,080.00; thence East 9,550.00 feet along the North line of said Block 67 to a point having Coordinates of X = 2,674,400.00 and Y = 396,080.00; thence South 9,950.00 feet to a point having Coordinates of X = 2,674,400.00 and Y = 386,130.00; thence West 8,250.00 feet to the Southeast corner of State Lease No. 17123 having Coordinates of X = 2,666,150.00 and Y = 386,130.00; thence along the boundary of said State Lease No. 17123 the following courses: North 5,400.00 feet to its Northeast corner having Coordinates of X = 2,666,150.00 and Y = 391,530.00 and West 1,300.00 feet to its Northwest corner, said corner also being the Northeast corner of State Lease No. 17122 having Coordinates of X = 2,664,850.00 and Y = 391,530.00; thence West 4,575.00 feet along the North line of said State Lease No. 17122 to its Northwest corner having Coordinates of X = 2,660,275.00 and Y = 391,530.00; thence North 4,550.00 feet to the point of beginning, containing **2,498.13 acres**, all as more particularly outlined on a plat on file in the Office of Mineral Resources, Department of Natural Resources. All bearings, distances and coordinates are based on Louisiana Coordinate System of 1927, (North or South Zone), where applicable.

NOTE: The above description of the Tract nominated for lease has been provided and corrected, where required, exclusively by the nomination party. Any mineral lease selected from this Tract and awarded by the Louisiana State Mineral Board shall be without warranty of any kind, either express, implied, or statutory, including, but not limited to, the implied warranties of merchantability and fitness for a particular purpose. Should the mineral lease awarded by the Louisiana State Mineral Board be subsequently modified, cancelled or abrogated due to the existence of conflicting leases, operating agreements, private claims or other future obligations or conditions which may affect all or any portion of the leased Tract, it shall not relieve the Lessee of the obligation to pay any bonus due thereon to the Louisiana State Mineral Board, nor shall the Louisiana State Mineral Board be obligated to refund any consideration paid by the Lessor prior to such modification, cancellation, or abrogation, including, but not limited to, bonuses, rentals and royalties.

NOTE: The Office of Mineral Resources will require a minimum bonus of \$190 per acre and a minimum royalty of 22%.

NOTE: The State of Louisiana does hereby reserve, and this lease shall be subject to, the imprescriptible right of surface use in the nature of a servitude in favor of the Department of Natural Resources, including its Offices and Commissions, for the sole purpose of implementing, constructing, servicing and maintaining approved coastal zone management and/or restoration projects. Utilization of any and all rights derived under this lease by the mineral lessee, its agents, successors or assigns, shall not interfere with nor hinder the reasonable surface use by the Department of Natural Resources, its Offices or Commissions, as herein above reserved.

Applicant: HILLS INDEPENDENT OIL CO.

Bidder	Cash Payment	Price/Acre	Rental	Oil	Gas	Other



ST BERNARD PARISH

BLOCK CS0067

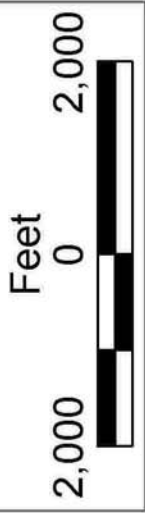
BLOCK CS0068

P.O.B.
X=2,660,275.00
Y=396,080.00

SL 17123

SL 17122

CHANDELEUR SOUND AREA



TRACT 37887 - Terrebonne Parish, Louisiana

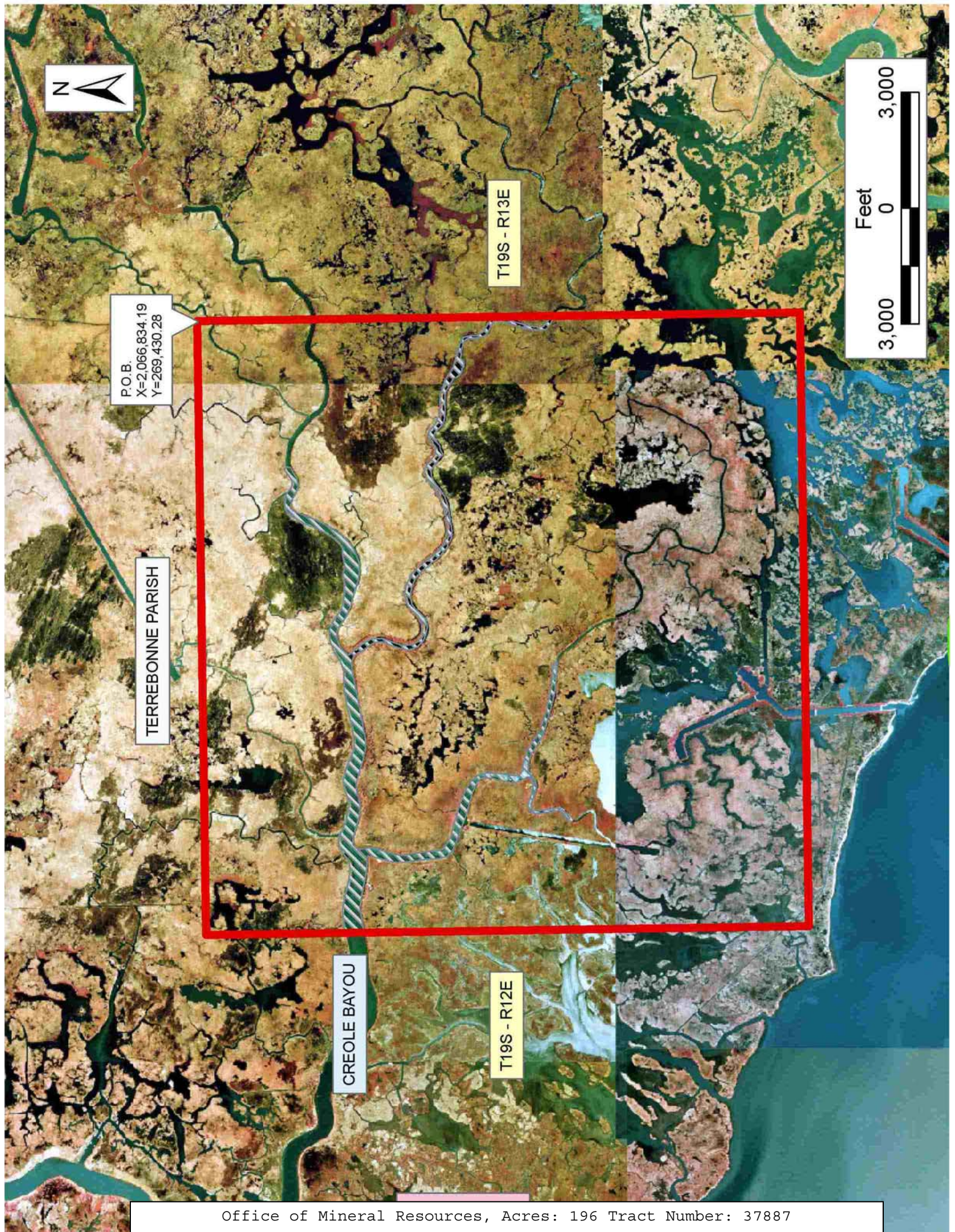
All of the lands now or formerly constituting the beds and bottoms of all water bodies of every nature and description the title of which vests in the State of Louisiana, together with all islands arising therein and other lands formed by accretion or by reliction, where allowed by law, excepting tax adjudicated lands, and not presently under mineral lease on October 12, 2005, situated in Terrebonne Parish, Louisiana, and more particularly described as follows: Beginning at a point having Coordinates of X = 2,066,834.19 and Y = 269,430.28; thence South 15,600.00 feet to a point having Coordinates of X = 2,066,834.19 and Y = 253,830.28; thence West 15,900.00 feet to a point having Coordinates of X = 2,050,934.19 and Y = 253,830.28; thence North 15,600.00 feet to a point having Coordinates of X = 2,050,934.19 and Y = 269,430.28; thence East 15,900.00 feet to point of beginning, containing approximately **196.00 acres**, all as more particularly outlined on a plat on file in the Office of Mineral Resources, Department of Natural Resources. All bearings, distances and coordinates are based on Louisiana Coordinate System of 1927, (North or South Zone), where applicable.

NOTE: The above description of the Tract nominated for lease has been provided and corrected, where required, exclusively by the nomination party. Any mineral lease selected from this Tract and awarded by the Louisiana State Mineral Board shall be without warranty of any kind, either express, implied, or statutory, including, but not limited to, the implied warranties of merchantability and fitness for a particular purpose. Should the mineral lease awarded by the Louisiana State Mineral Board be subsequently modified, cancelled or abrogated due to the existence of conflicting leases, operating agreements, private claims or other future obligations or conditions which may affect all or any portion of the leased Tract, it shall not relieve the Lessee of the obligation to pay any bonus due thereon to the Louisiana State Mineral Board, nor shall the Louisiana State Mineral Board be obligated to refund any consideration paid by the Lessor prior to such modification, cancellation, or abrogation, including, but not limited to, bonuses, rentals and royalties.

NOTE: The State of Louisiana does hereby reserve, and this lease shall be subject to, the imprescriptible right of surface use in the nature of a servitude in favor of the Department of Natural Resources, including its Offices and Commissions, for the sole purpose of implementing, constructing, servicing and maintaining approved coastal zone management and/or restoration projects. Utilization of any and all rights derived under this lease by the mineral lessee, its agents, successors or assigns, shall not interfere with nor hinder the reasonable surface use by the Department of Natural Resources, its Offices or Commissions, as herein above reserved.

Applicant: ALJ ENERGY

Bidder	Cash Payment	Price/Acre	Rental	Oil	Gas	Other



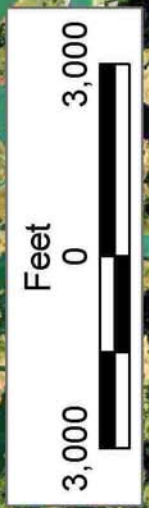
P.O.B.
X=2,066,834.19
Y=269,430.28

TERREBONNE PARISH

T19S - R13E

CREOLE BAYOU

T19S - R12E



TRACT 37888 - Terrebonne Parish, Louisiana

All of the lands now or formerly constituting the beds and bottoms of all water bodies of every nature and description the title of which vests in the State of Louisiana, together with all islands arising therein and other lands formed by accretion or by reliction, where allowed by law, excepting tax adjudicated lands, and not presently under mineral lease on October 12, 2005, situated in Terrebonne Parish, Louisiana, and more particularly described as follows: Beginning at an interior corner of State Lease No. 199, as amended, having Coordinates of X = 2,273,576.38 and Y = 187,004.38; thence along the Southern boundary of said State Lease No. 199 the following: North 06 degrees 12 minutes 15 seconds West 1,392.69 feet, North 11 degrees 26 minutes 05 seconds West 488.46 feet, North 89 degrees 34 minutes 50 seconds East 1,285.28 feet, South 00 degrees 25 minutes 10 seconds East 1,865.06 feet and North 89 degrees 34 minutes 50 seconds East 6,683.19 feet to its Southeast corner having Coordinates of X = 2,281,310.94 and Y = 187,061.00; thence South 4,061.00 feet to a point having Coordinates of X = 2,281,310.94 and Y = 183,000.00; thence West 10,570.78 feet to a point having Coordinates of X = 2,270,740.16 and Y = 183,000.00; thence North 05 degrees 55 minutes 10 seconds West 2,686.20 feet to the Southeast corner of State Lease No. 301, as amended, having Coordinates of X = 2,270,463.13 and Y = 185,671.88; thence North 05 degrees 55 minutes 10 seconds West 1315.73 feet along the East line of said State Lease No. 301 to its Northeast corner located on the South line of said State Lease No. 199, having Coordinates of X = 2,270,327.44 and Y = 186,980.59; thence North 89 degrees 34 minutes 50 seconds East 3,249.02 feet along the South line of said State Lease No. 199 to the point of beginning, containing approximately **1,044.29 acres**, all as more particularly outlined on a plat on file in the Office of Mineral Resources, Department of Natural Resources. All bearings, distances and coordinates are based on Louisiana Coordinate System of 1927, (North or South Zone), where applicable.

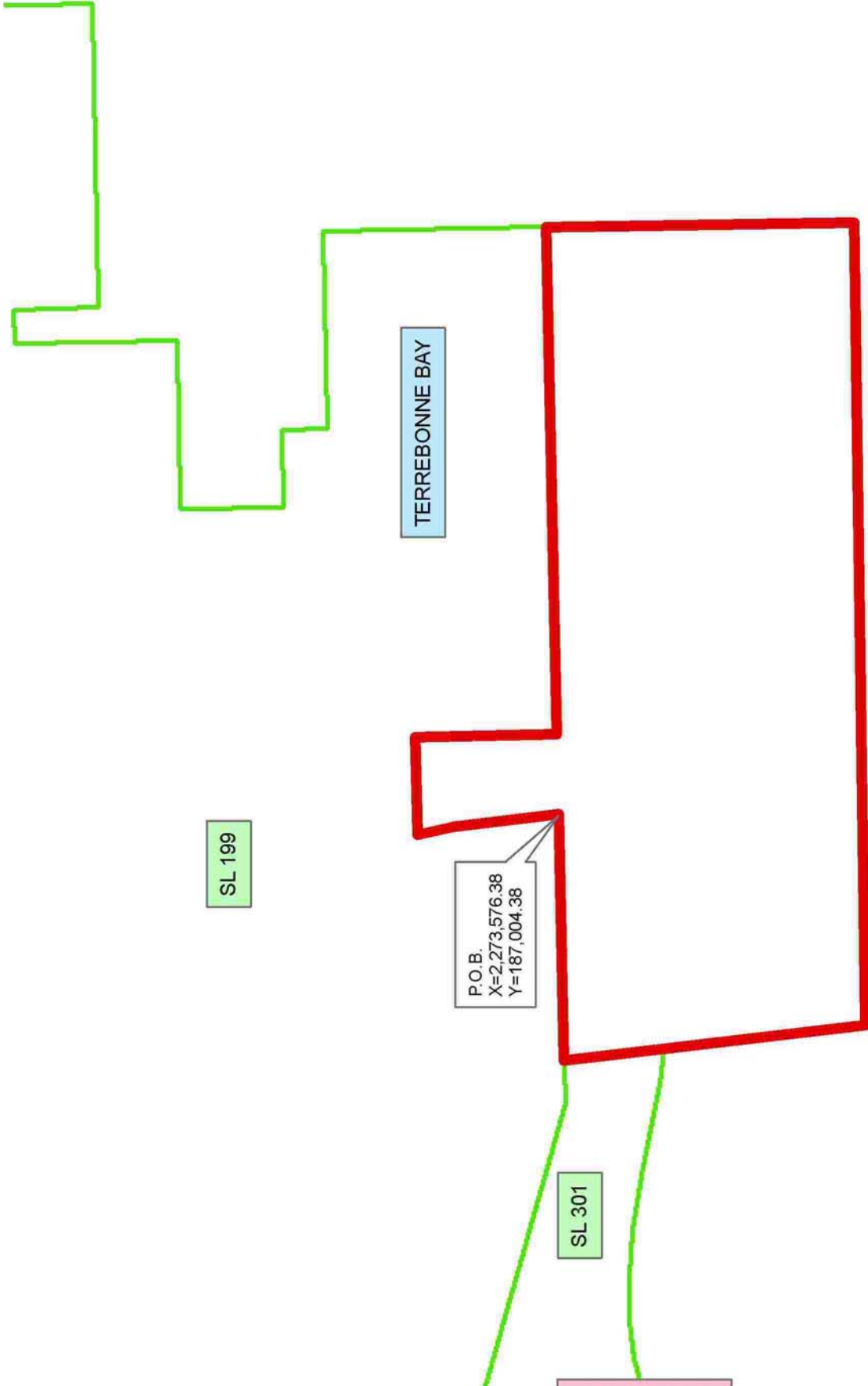
NOTE: The above description of the Tract nominated for lease has been provided and corrected, where required, exclusively by the nomination party. Any mineral lease selected from this Tract and awarded by the Louisiana State Mineral Board shall be without warranty of any kind, either express, implied, or statutory, including, but not limited to, the implied warranties of merchantability and fitness for a particular purpose. Should the mineral lease awarded by the Louisiana State Mineral Board be subsequently modified, cancelled or abrogated due to the existence of conflicting leases, operating agreements, private claims or other future obligations or conditions which may affect all or any portion of the leased Tract, it shall not relieve the Lessee of the obligation to pay any bonus due thereon to the Louisiana State Mineral Board, nor shall the Louisiana State Mineral Board be obligated to refund any consideration paid by the Lessor prior to such modification, cancellation, or abrogation, including, but not limited to, bonuses, rentals and royalties.

NOTE: The State of Louisiana does hereby reserve, and this lease shall be subject to, the imprescriptible right of surface use in the nature of a servitude in favor of the Department of Natural Resources, including its Offices and Commissions, for the sole purpose of implementing, constructing, servicing and maintaining approved coastal zone management and/or restoration projects. Utilization of any and all rights derived under this lease by the mineral lessee, its agents, successors or assigns, shall not interfere with nor hinder the reasonable surface use by the Department of Natural Resources, its Offices or Commissions, as herein above reserved.

NOTE: The Department of Wildlife and Fisheries has designated certain areas in the coastal waters of the State of Louisiana as Oyster Seed Bed Areas. The exact location of those Seed Bed Areas must be obtained from the Department of Wildlife and Fisheries and any work done under a mineral lease from the State of Louisiana may necessarily be conducted in conformity with the rules and regulations promulgated by the said Department of Wildlife and Fisheries for Oyster Seed Bed Areas.

Applicant: LAND MANAGEMENT SERVICES, L.L.C.

Bidder	Cash Payment	Price/Acre	Rental	Oil	Gas	Other



SL 199

TERREBONNE BAY

P.O.B.
X=2,273,576.38
Y=187,004.38

SL 301

TERREBONNE PARISH

