

**TRACT 37872 - Ouachita and Union Parishes, Louisiana**

All of the lands now or formerly constituting the beds and bottoms of all water bodies of every nature and description the title of which vests in the State of Louisiana, together with all islands arising therein and other lands formed by accretion or by reliction, where allowed by law, excepting tax adjudicated lands, and not presently under mineral lease on October 12, 2005, situated in Ouachita and Union Parishes, Louisiana, and more particularly described as follows: Beginning at a point having Coordinates of X = 2,089,760.00 and Y = 712,920.00; thence East 15,940.00 feet to a point having Coordinates of X = 2,105,700.00 and Y = 712,920.00; thence South 15,840.00 feet to a point having Coordinates of X = 2,105,700.00 and Y = 697,080.00; thence West 15,940.00 feet to a point having Coordinates of X = 2,089,760.00 and Y = 697,080.00; thence North 15,840.00 feet to the point of beginning, **LESS AND EXCEPT** all that portion of State Lease No. 309 that may lie within the above described tract, containing approximately **7 acres**, all as more particularly outlined on a plat on file in the Office of Mineral Resources, Department of Natural Resources. All bearings, distances and coordinates are based on Louisiana Coordinate System of 1927, (North or South Zone), where applicable.

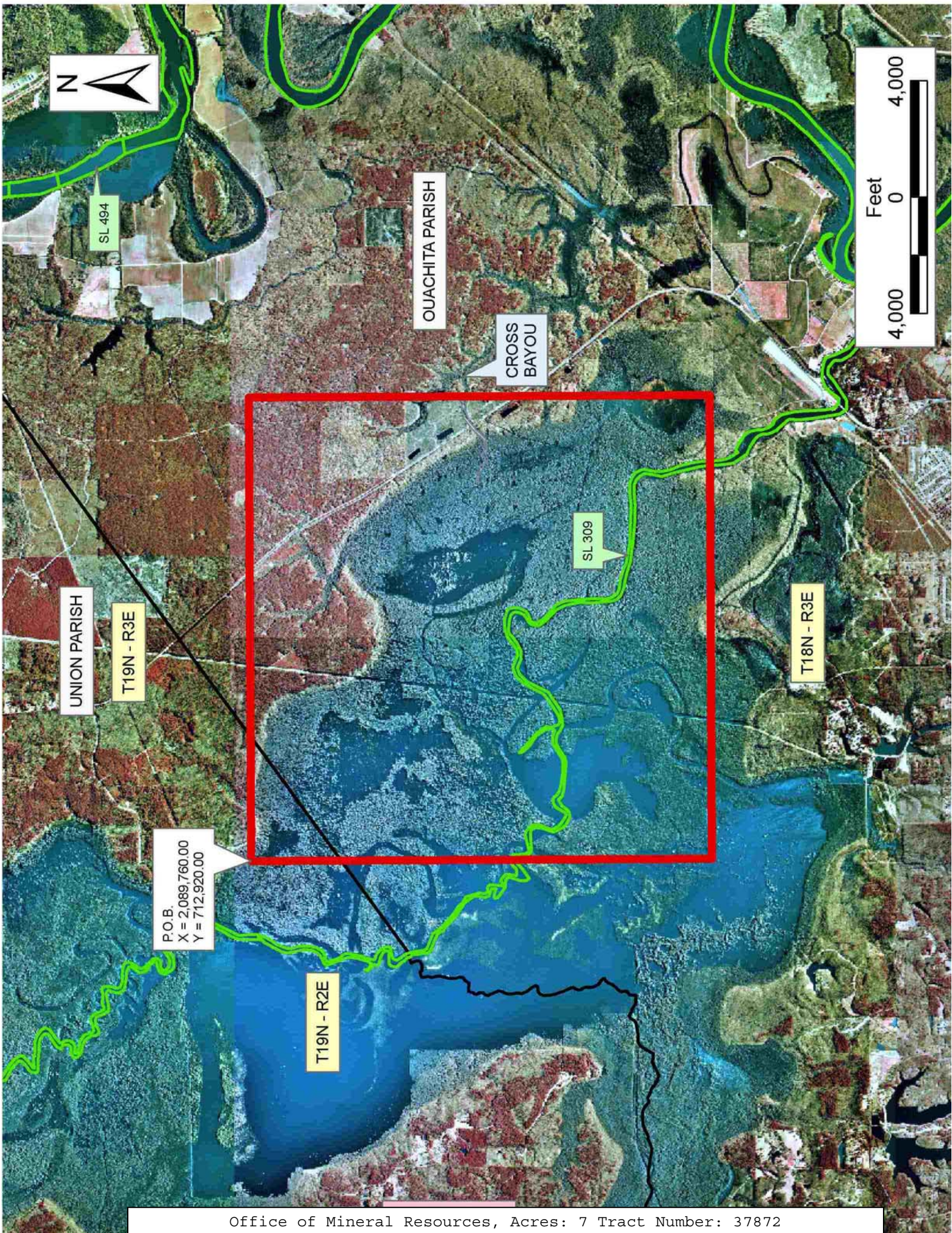
NOTE: The above description of the Tract nominated for lease has been provided and corrected, where required, exclusively by the nomination party. Any mineral lease selected from this Tract and awarded by the Louisiana State Mineral Board shall be without warranty of any kind, either express, implied, or statutory, including, but not limited to, the implied warranties of merchantability and fitness for a particular purpose. Should the mineral lease awarded by the Louisiana State Mineral Board be subsequently modified, cancelled or abrogated due to the existence of conflicting leases, operating agreements, private claims or other future obligations or conditions which may affect all or any portion of the leased Tract, it shall not relieve the Lessee of the obligation to pay any bonus due thereon to the Louisiana State Mineral Board, nor shall the Louisiana State Mineral Board be obligated to refund any consideration paid by the Lessor prior to such modification, cancellation, or abrogation, including, but not limited to, bonuses, rentals and royalties.

NOTE: The above Tract is located upon a restricted scenic river and all operations in this area must be conducted in strict conformity with the regulations of the Corps of Engineers, U.S. Army.

Bidder	Cash Payment	Price/Acre	Rental	Oil	Gas	Other

Applicant: THEOPHILUS OIL GAS & LAND SERVICES LLC







**TRACT 37873 - Ouachita Parish, Louisiana**

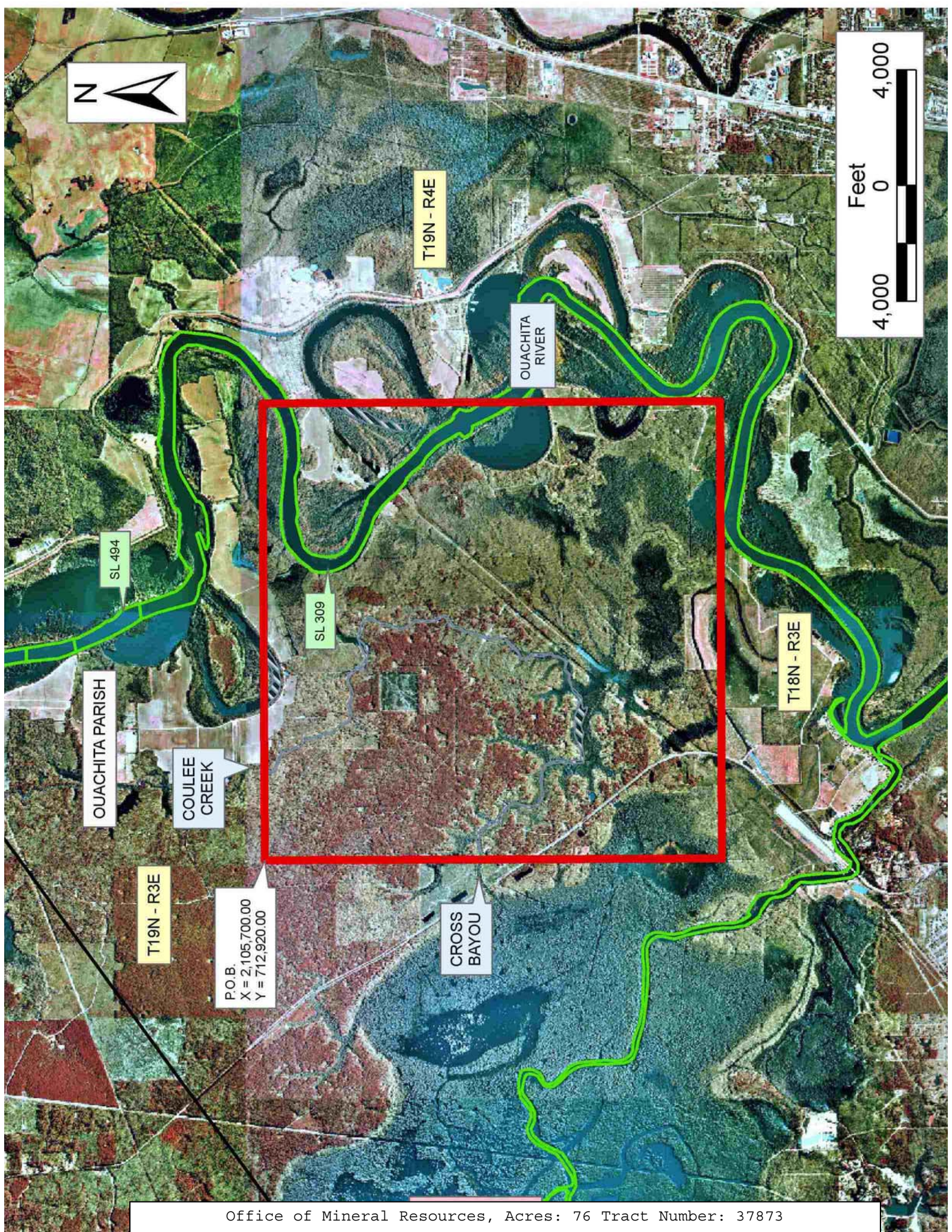
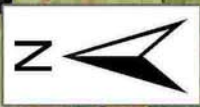
All of the lands now or formerly constituting the beds and bottoms of all water bodies of every nature and description the title of which vests in the State of Louisiana, together with all islands arising therein and other lands formed by accretion or by reliction, where allowed by law, excepting tax adjudicated lands, and not presently under mineral lease on October 12, 2005, situated in Ouachita Parish, Louisiana, and more particularly described as follows: Beginning at a point having Coordinates of X = 2,105,700.00 and Y = 712,920.00; thence East 15,840.00 feet to a point having Coordinates of X = 2,121,540.00 and Y = 712,920.00; thence South 15,840.00 feet to a point having Coordinates of X = 2,121,540.00 and Y = 697,080.00; thence West 15,840.00 feet to a point having Coordinates of X = 2,105,700.00 and Y = 697,080.00; thence North 15,840.00 feet to the point of beginning, **LESS AND EXCEPT** all that portion of State Lease No. 309 that may lie within the above described tract, containing approximately **76 acres**, all as more particularly outlined on a plat on file in the Office of Mineral Resources, Department of Natural Resources. All bearings, distances and coordinates are based on Louisiana Coordinate System of 1927, (North or South Zone), where applicable.

NOTE: The above description of the Tract nominated for lease has been provided and corrected, where required, exclusively by the nomination party. Any mineral lease selected from this Tract and awarded by the Louisiana State Mineral Board shall be without warranty of any kind, either express, implied, or statutory, including, but not limited to, the implied warranties of merchantability and fitness for a particular purpose. Should the mineral lease awarded by the Louisiana State Mineral Board be subsequently modified, cancelled or abrogated due to the existence of conflicting leases, operating agreements, private claims or other future obligations or conditions which may affect all or any portion of the leased Tract, it shall not relieve the Lessee of the obligation to pay any bonus due thereon to the Louisiana State Mineral Board, nor shall the Louisiana State Mineral Board be obligated to refund any consideration paid by the Lessor prior to such modification, cancellation, or abrogation, including, but not limited to, bonuses, rentals and royalties.

Applicant: THEOPHILUS OIL GAS & LAND SERVICES LLC

Bidder	Cash Payment	Price/Acre	Rental	Oil	Gas	Other





P.O.B.  
X = 2,105,700.00  
Y = 712,920.00



**TRACT 37874 - Ouachita Parish, Louisiana**

All of the lands now or formerly constituting the beds and bottoms of all water bodies of every nature and description the title of which vests in the State of Louisiana, together with all islands arising therein and other lands formed by accretion or by reliction, where allowed by law, excepting tax adjudicated lands, and not presently under mineral lease on October 12, 2005, situated in Ouachita Parish, Louisiana, and more particularly described as follows: Beginning at a point having Coordinates of X = 2,121,540.00 and Y = 705,170.00; thence East 15,605.00 feet to a point having Coordinates of X = 2,137,145.00 and Y = 705,170.00; thence South 18,480.00 feet to a point having Coordinates of X = 2,137,145.00 and Y = 686,690.00; thence West 15,605.00 feet to a point having Coordinates of X = 2,121,540.00 and Y = 686,690.00; thence North 18,480.00 feet to the point of beginning, **LESS AND EXCEPT** those portions of State Lease No 309 that may lie within the above described tract, containing approximately **182 acres**, all as more particularly outlined on a plat on file in the Office of Mineral Resources, Department of Natural Resources. All bearings, distances and coordinates are based on Louisiana Coordinate System of 1927, (North or South Zone), where applicable.

NOTE: The above description of the Tract nominated for lease has been provided and corrected, where required, exclusively by the nomination party. Any mineral lease selected from this Tract and awarded by the Louisiana State Mineral Board shall be without warranty of any kind, either express, implied, or statutory, including, but not limited to, the implied warranties of merchantability and fitness for a particular purpose. Should the mineral lease awarded by the Louisiana State Mineral Board be subsequently modified, cancelled or abrogated due to the existence of conflicting leases, operating agreements, private claims or other future obligations or conditions which may affect all or any portion of the leased Tract, it shall not relieve the Lessee of the obligation to pay any bonus due thereon to the Louisiana State Mineral Board, nor shall the Louisiana State Mineral Board be obligated to refund any consideration paid by the Lessor prior to such modification, cancellation, or abrogation, including, but not limited to, bonuses, rentals and royalties.

NOTE: This tract is located within the boundaries of a wildlife management area or refuge and any operations conducted thereon in conjunction with this mineral lease may be subject to rules and regulations promulgated by the Department of Wildlife and Fisheries for the protection of fish, birds and other wildlife including, but not necessarily limited to, the following:

1. No activities will be allowed without written authorization from the Louisiana Department of Wildlife and Fisheries. All projects will be coordinated and approved by the appropriate WMA Supervisor prior to any activities on the wildlife management area.
2. Proposed projects will be evaluated on a case by case basis. Modifications to proposed projects may be required including, but not limited to, access routes, spoil placement, well sites, flow lines and

other appurtenant structures required by the Louisiana Department of Wildlife and Fisheries.

3. Compensatory mitigation will be required to offset unavoidable wetland impacts.

4. Removal of all structures, facilities, and equipment will be required within 120 days of abandonment unless otherwise agreed to by the Department of Wildlife and Fisheries.

5. No activities will be allowed during the hunting season unless approved by the Department.

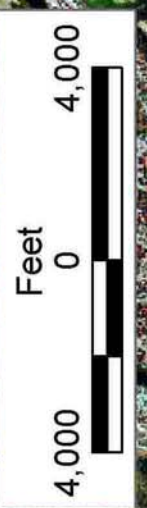
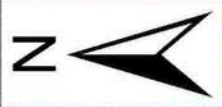
6. Compliance with the said WMA regulations will be required unless otherwise specified by the Department.

7. Prior to submitting applications for wetland permits to Federal and State permitting agencies the lease holder shall coordinate project details with the Louisiana Department of Wildlife and Fisheries, Fur and Refuge Division. Contact person for the Department will be Mike Windham at (504) 568-5886.

Applicant: THEOPHILUS OIL GAS & LAND SERVICES LLC

Bidder	Cash Payment	Price/Acre	Rental	Oil	Gas	Other





OUACHITA PARISH

T19N - R4E

BAYOU DE SIARD

T18N - R4E



SL 309

BAYOU DE SIARD

P.O.B.  
X = 2,121,540.00  
Y = 705,170.00

T19N - R3E

OUACHITA RIVER

T18N - R3E



**TRACT 37875 - Ouachita Parish, Louisiana**

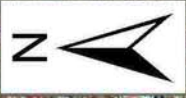
All of the lands now or formerly constituting the beds and bottoms of all water bodies of every nature and description the title of which vests in the State of Louisiana, together with all islands arising therein and other lands formed by accretion or by reliction, where allowed by law, excepting tax adjudicated lands, and not presently under mineral lease on October 12, 2005, situated in Ouachita Parish, Louisiana, and more particularly described as follows: Beginning at a point having Coordinates of X = 2,137,145.00 and Y = 705,170.00; thence East 16,075.00 feet to a point having Coordinates of X = 2,153,220.00 and Y = 705,170.00; thence South 18,480.00 feet to a point having Coordinates of X = 2,153,220.00 and Y = 686,690.00; thence West 16,075.00 feet to a point having Coordinates of X = 2,137,145.00 and Y = 686,690.00; thence North 18,480.00 feet to the point of beginning, containing approximately **133 acres**, all as more particularly outlined on a plat on file in the Office of Mineral Resources, Department of Natural Resources. All bearings, distances and coordinates are based on Louisiana Coordinate System of 1927, (North or South Zone), where applicable.

NOTE: The above description of the Tract nominated for lease has been provided and corrected, where required, exclusively by the nomination party. Any mineral lease selected from this Tract and awarded by the Louisiana State Mineral Board shall be without warranty of any kind, either express, implied, or statutory, including, but not limited to, the implied warranties of merchantability and fitness for a particular purpose. Should the mineral lease awarded by the Louisiana State Mineral Board be subsequently modified, cancelled or abrogated due to the existence of conflicting leases, operating agreements, private claims or other future obligations or conditions which may affect all or any portion of the leased Tract, it shall not relieve the Lessee of the obligation to pay any bonus due thereon to the Louisiana State Mineral Board, nor shall the Louisiana State Mineral Board be obligated to refund any consideration paid by the Lessor prior to such modification, cancellation, or abrogation, including, but not limited to, bonuses, rentals and royalties.

Applicant: THEOPHILUS OIL GAS & LAND SERVICES LLC

Bidder	Cash Payment	Price/Acre	Rental	Oil	Gas	Other





T19N - R5E

T18N - R5E

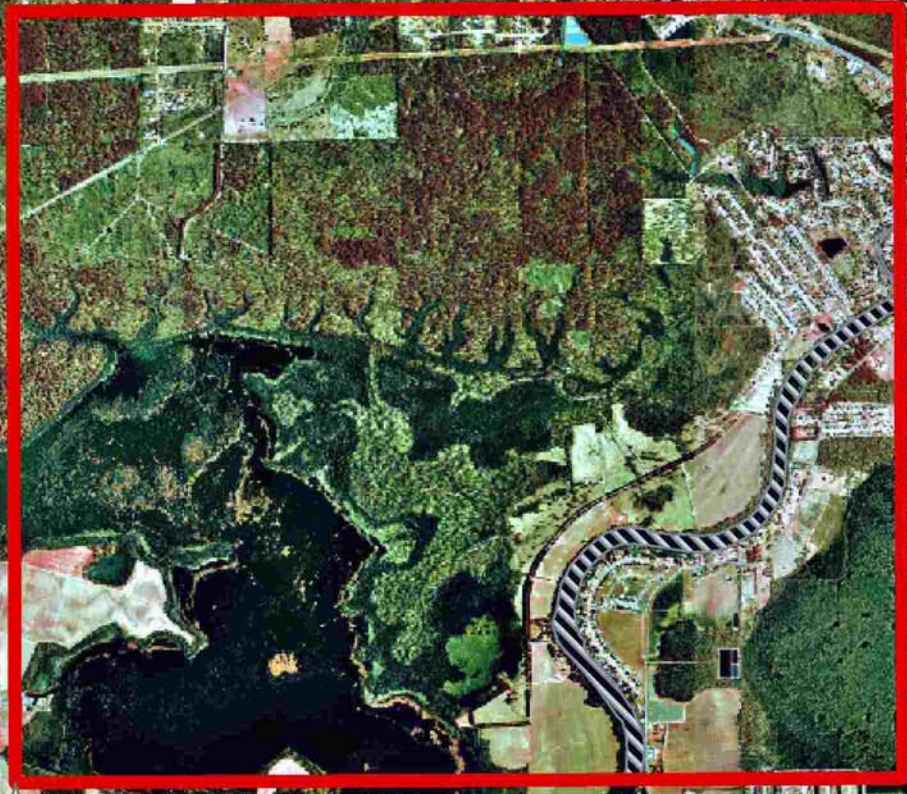
OUACHITA PARISH

T19N - R4E

T18N - R4E

P.O.B.  
X = 2,137,145.00  
Y = 705,170.00

BAYOU  
DE SIARD





**TRACT 37876 - Morehouse and Ouachita Parishes, Louisiana**

All of the lands now or formerly constituting the beds and bottoms of all water bodies of every nature and description the title of which vests in the State of Louisiana, together with all islands arising therein and other lands formed by accretion or by reliction, where allowed by law, excepting tax adjudicated lands, and not presently under mineral lease on October 12, 2005, situated in Morehouse and Ouachita Parishes, Louisiana, and more particularly described as follows: Beginning at a point having Coordinates of X = 2,169,060.00 and Y = 705,170.00; thence East 14,900.00 feet to a point having Coordinates of X = 2,183,960.00 and Y = 705,170.00; thence South 18,480.00 feet to a point having Coordinates of X = 2,183,960.00 and Y = 686,690.00; thence West 14,900.00 feet to a point having Coordinates of X = 2,169,060.00 and Y = 686,690.00; thence North 18,480.00 feet to the point of beginning, **LESS AND EXCEPT** all that portion of the Russell Sage Wildlife Management Area and the Ouachita Wildlife Management Area that may lie within the above described tract, containing approximately **20 acres**, all as more particularly outlined on a plat on file in the Office of Mineral Resources, Department of Natural Resources. All bearings, distances and coordinates are based on Louisiana Coordinate System of 1927, (North or South Zone), where applicable.

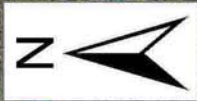
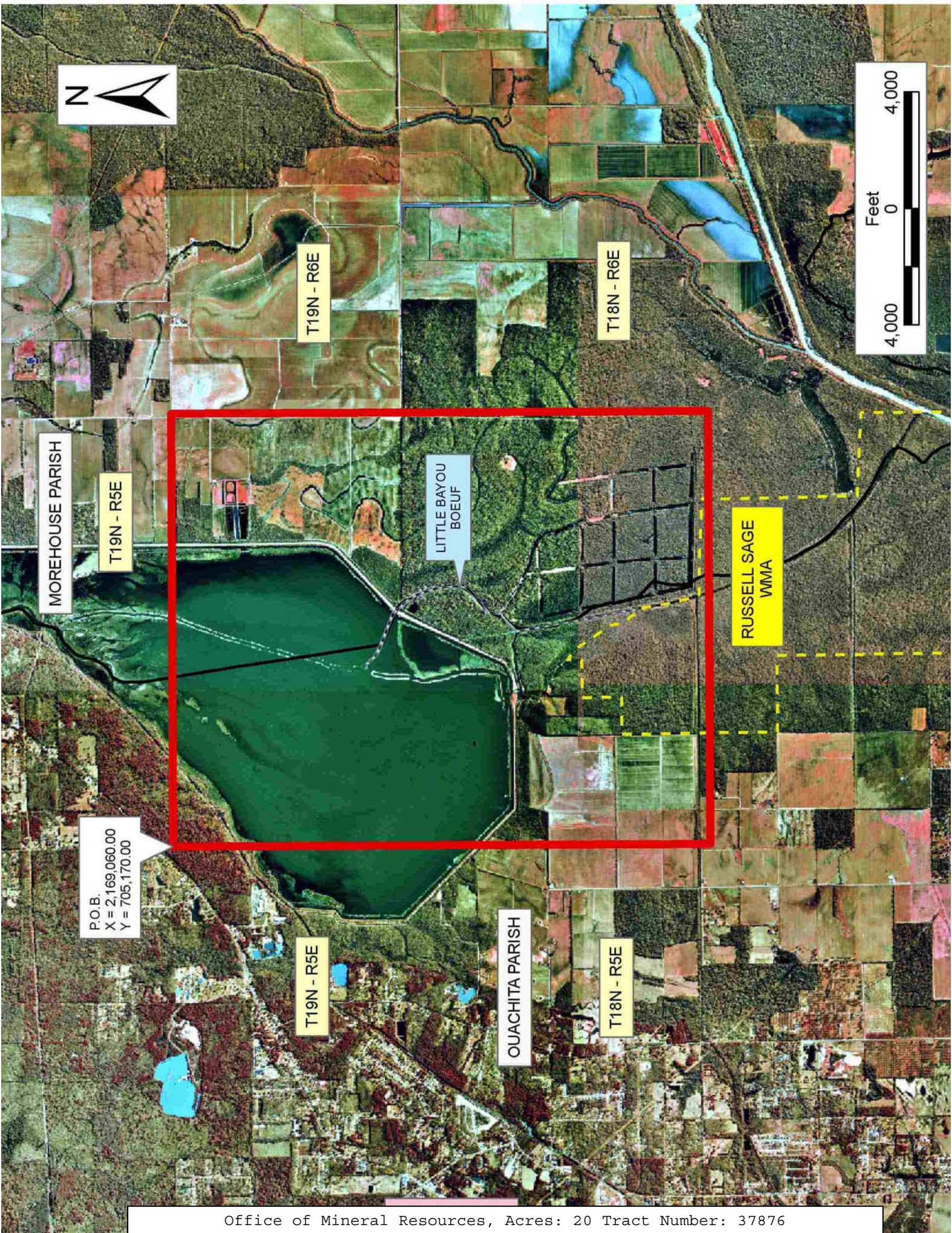
NOTE: The above description of the Tract nominated for lease has been provided and corrected, where required, exclusively by the nomination party. Any mineral lease selected from this Tract and awarded by the Louisiana State Mineral Board shall be without warranty of any kind, either express, implied, or statutory, including, but not limited to, the implied warranties of merchantability and fitness for a particular purpose. Should the mineral lease awarded by the Louisiana State Mineral Board be subsequently modified, cancelled or abrogated due to the existence of conflicting leases, operating agreements, private claims or other future obligations or conditions which may affect all or any portion of the leased Tract, it shall not relieve the Lessee of the obligation to pay any bonus due thereon to the Louisiana State Mineral Board, nor shall the Louisiana State Mineral Board be obligated to refund any consideration paid by the Lessor prior to such modification, cancellation, or abrogation, including, but not limited to, bonuses, rentals and royalties.

Bidder	Cash Payment	Price/Acre	Rental	Oil	Gas	Other



Applicant: THEOPHILUS OIL GAS & LAND SERVICES LLC





MOREHOUSE PARISH

T19N - R5E

T19N - R6E

T18N - R6E

LITTLE BAYOU  
BOEUF

RUSSELL SAGE  
WMA

P.O.B.  
X = 2,169,060.00  
Y = 705,170.00

T19N - R5E

OUACHITA PARISH

T18N - R5E



**TRACT 37877 - Bossier and Caddo Parishes, Louisiana**

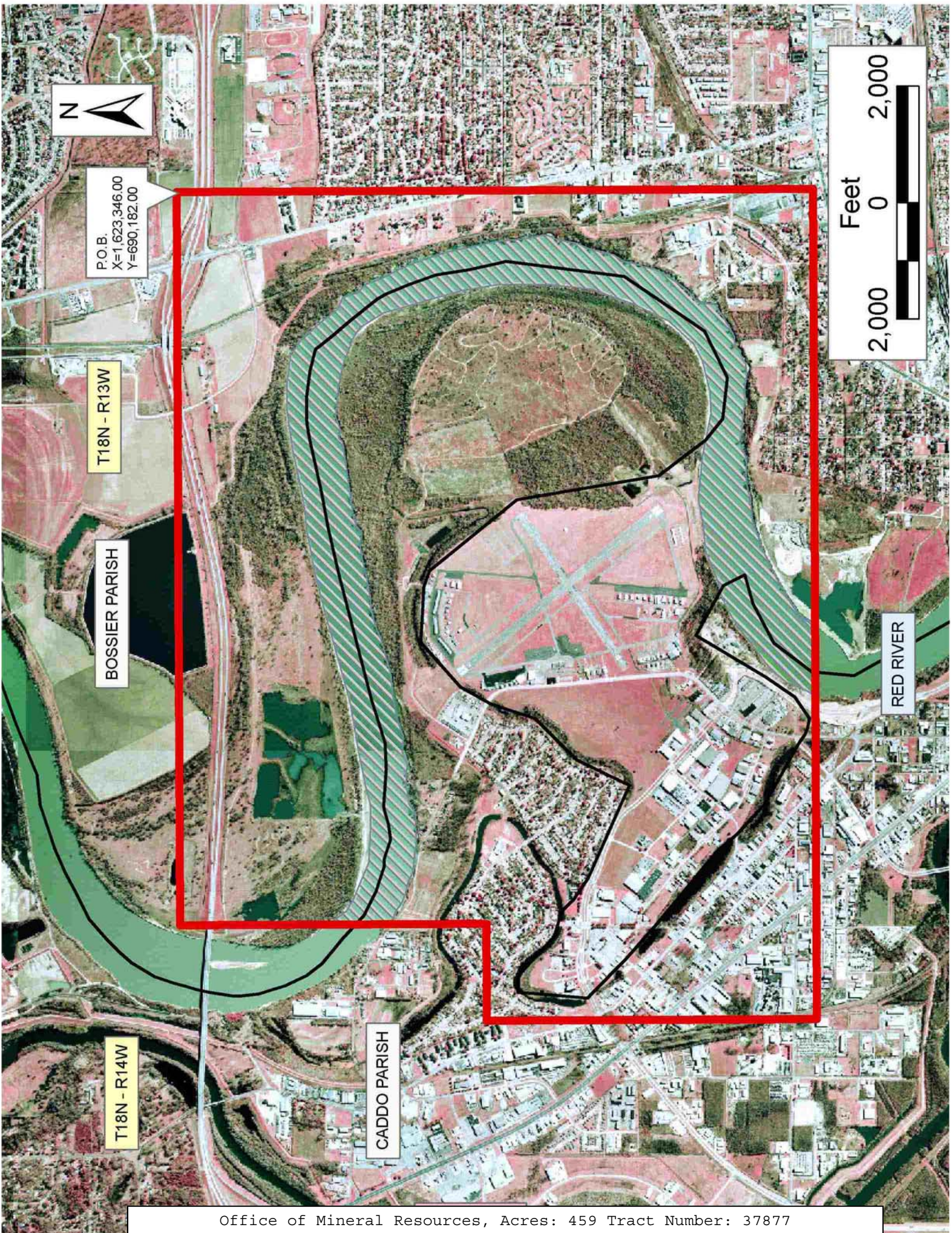
All of the lands now or formerly constituting the beds and bottoms of all water bodies of every nature and description the title of which vests in the State of Louisiana, together with all islands arising therein and other lands formed by accretion or by reliction, where allowed by law, excepting tax adjudicated lands, and not presently under mineral lease on October 12, 2005, situated in Bossier and Caddo Parishes, Louisiana, and more particularly described as follows: Beginning at a point having Coordinates of X = 1,623,346.00 and Y = 690,182.00; thence South 10,950.00 feet to a point having Coordinates of X = 1,623,346.00 and Y = 679,232.00; thence West 14,286.00 feet to a point having Coordinates of X = 1,609,060.00 and Y = 679,232.00; thence North 5,678.00 feet to a point having Coordinates of X = 1,609,060.00 and Y = 684,910.00; thence East 1,666.00 feet to a point having Coordinates of X = 1,610,726.00 and Y = 684,910.00; thence North 5,272.00 feet to a point having Coordinates of X = 1,610,726.00 and Y = 690,182.00; thence East 12,620.00 feet to the point of beginning, containing approximately **459 acres**, all as more particularly outlined on a plat on file in the Office of Mineral Resources, Department of Natural Resources. All bearings, distances and coordinates are based on Louisiana Coordinate System of 1927, (North or South Zone), where applicable.

NOTE: The above description of the Tract nominated for lease has been provided and corrected, where required, exclusively by the nomination party. Any mineral lease selected from this Tract and awarded by the Louisiana State Mineral Board shall be without warranty of any kind, either express, implied, or statutory, including, but not limited to, the implied warranties of merchantability and fitness for a particular purpose. Should the mineral lease awarded by the Louisiana State Mineral Board be subsequently modified, cancelled or abrogated due to the existence of conflicting leases, operating agreements, private claims or other future obligations or conditions which may affect all or any portion of the leased Tract, it shall not relieve the Lessee of the obligation to pay any bonus due thereon to the Louisiana State Mineral Board, nor shall the Louisiana State Mineral Board be obligated to refund any consideration paid by the Lessor prior to such modification, cancellation, or abrogation, including, but not limited to, bonuses, rentals and royalties.

Bidder	Cash Payment	Price/Acre	Rental	Oil	Gas	Other

Applicant: EQUITY OIL COMPANY





P.O.B.  
X=1,623,346.00  
Y=690,182.00

T18N - R13W

BOSSIER PARISH

T18N - R14W

CADDO PARISH

RED RIVER





**TRACT 37878 - Caldwell Parish, Louisiana**

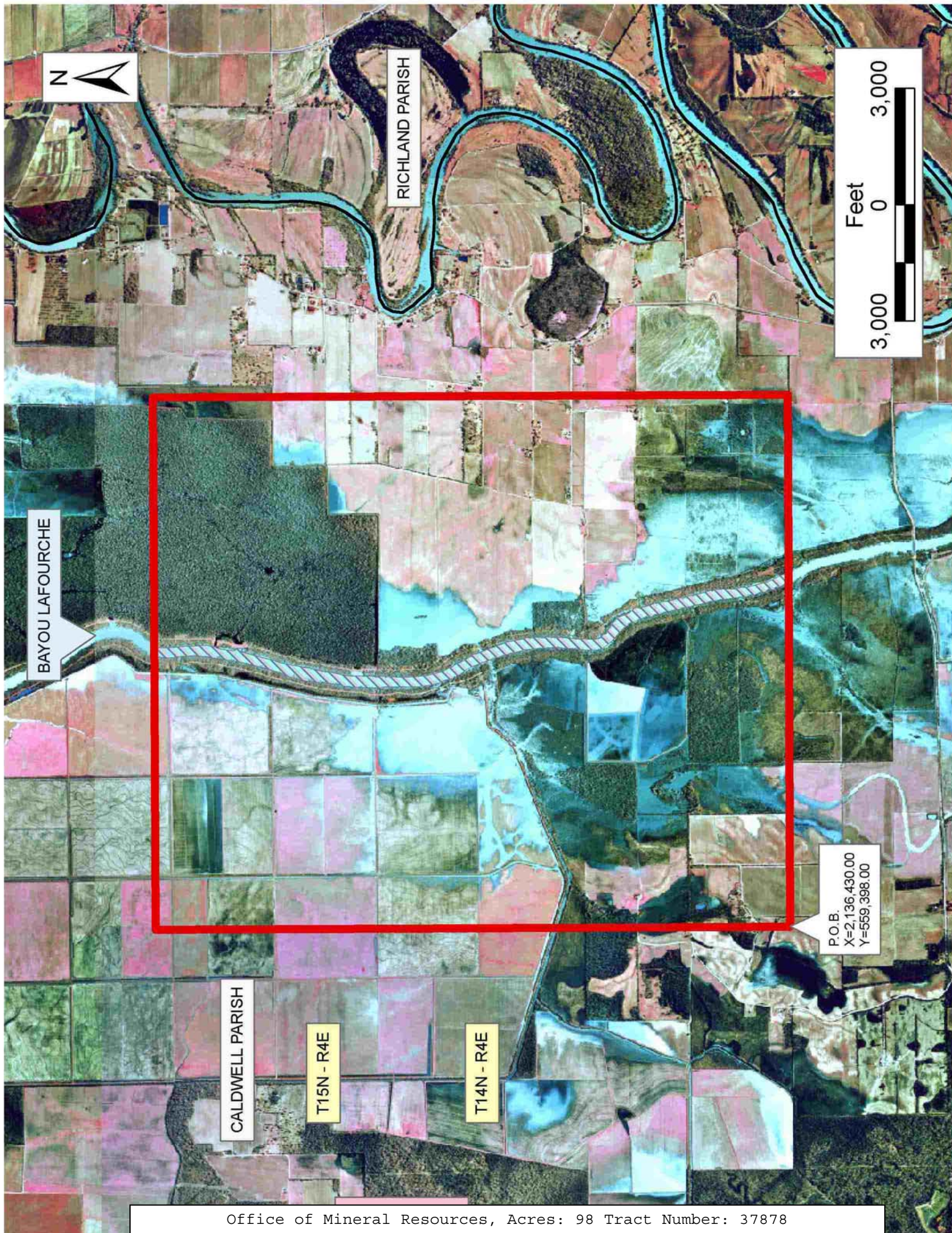
All of the lands now or formerly constituting the beds and bottoms of all water bodies of every nature and description the title of which vests in the State of Louisiana, together with all islands arising therein and other lands formed by accretion or by reliction, where allowed by law, excepting tax adjudicated lands, and not presently under mineral lease on October 12, 2005, situated in Caldwell Parish, Louisiana, and more particularly described as follows: Beginning at a point having Coordinates of X = 2,136,430.00 and Y = 559,398.00; thence North 16,386.00 feet to a point having Coordinates of X = 2,136,430.00 and Y = 575,784.00; thence East 13,746.00 feet to a point having Coordinates of X = 2,150,176.00 and Y = 575,784.00; thence South 16,386.00 feet to a point having Coordinates of X = 2,150,176.00 and Y = 559,398.00; thence West 13,746.00 feet to the point of beginning, containing approximately **98 acres**, all as more particularly outlined on a plat on file in the Office of Mineral Resources, Department of Natural Resources. All bearings, distances and coordinates are based on Louisiana Coordinate System of 1927, (North or South Zone), where applicable.

NOTE: The above description of the Tract nominated for lease has been provided and corrected, where required, exclusively by the nomination party. Any mineral lease selected from this Tract and awarded by the Louisiana State Mineral Board shall be without warranty of any kind, either express, implied, or statutory, including, but not limited to, the implied warranties of merchantability and fitness for a particular purpose. Should the mineral lease awarded by the Louisiana State Mineral Board be subsequently modified, cancelled or abrogated due to the existence of conflicting leases, operating agreements, private claims or other future obligations or conditions which may affect all or any portion of the leased Tract, it shall not relieve the Lessee of the obligation to pay any bonus due thereon to the Louisiana State Mineral Board, nor shall the Louisiana State Mineral Board be obligated to refund any consideration paid by the Lessor prior to such modification, cancellation, or abrogation, including, but not limited to, bonuses, rentals and royalties.

Applicant: BASIN PROPERTIES, INC.

Bidder	Cash Payment	Price/Acre	Rental	Oil	Gas	Other







**TRACT 37879 - Caldwell Parish, Louisiana**

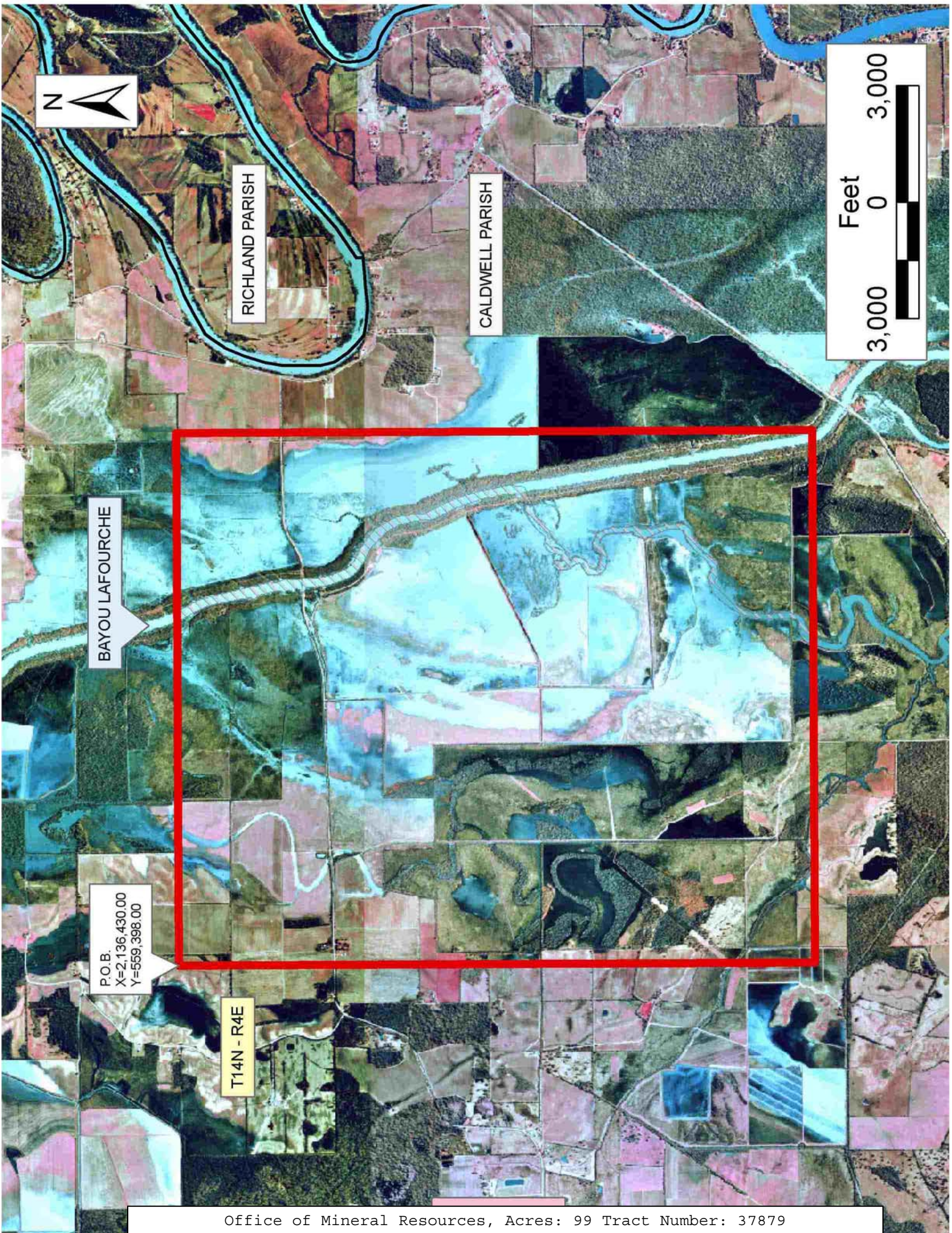
All of the lands now or formerly constituting the beds and bottoms of all water bodies of every nature and description the title of which vests in the State of Louisiana, together with all islands arising therein and other lands formed by accretion or by reliction, where allowed by law, excepting tax adjudicated lands, and not presently under mineral lease on October 12, 2005, situated in Caldwell Parish, Louisiana, and more particularly described as follows: Beginning at a point having Coordinates of X = 2,136,430.00 and Y = 559,398.00; thence East 13,746.00 feet to a point having Coordinates of X = 2,150,176.00 and Y = 559,398.00; thence South 16,416.00 feet to a point having Coordinates of X = 2,150,176.00 and Y = 542,982.00; thence West 13,746.00 feet to a point having Coordinates of X = 2,136,430.00 and Y = 542,982.00; thence North 16,416.00 feet the point of beginning, containing approximately **99 acres**, all as more particularly outlined on a plat on file in the Office of Mineral Resources, Department of Natural Resources. All bearings, distances and coordinates are based on Louisiana Coordinate System of 1927, (North or South Zone), where applicable.

NOTE: The above description of the Tract nominated for lease has been provided and corrected, where required, exclusively by the nomination party. Any mineral lease selected from this Tract and awarded by the Louisiana State Mineral Board shall be without warranty of any kind, either express, implied, or statutory, including, but not limited to, the implied warranties of merchantability and fitness for a particular purpose. Should the mineral lease awarded by the Louisiana State Mineral Board be subsequently modified, cancelled or abrogated due to the existence of conflicting leases, operating agreements, private claims or other future obligations or conditions which may affect all or any portion of the leased Tract, it shall not relieve the Lessee of the obligation to pay any bonus due thereon to the Louisiana State Mineral Board, nor shall the Louisiana State Mineral Board be obligated to refund any consideration paid by the Lessor prior to such modification, cancellation, or abrogation, including, but not limited to, bonuses, rentals and royalties.

Applicant: BASIN PROPERTIES, INC.

Bidder	Cash Payment	Price/Acre	Rental	Oil	Gas	Other







**TRACT 37880 - Tensas Parish, Louisiana**

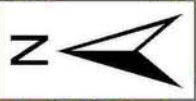
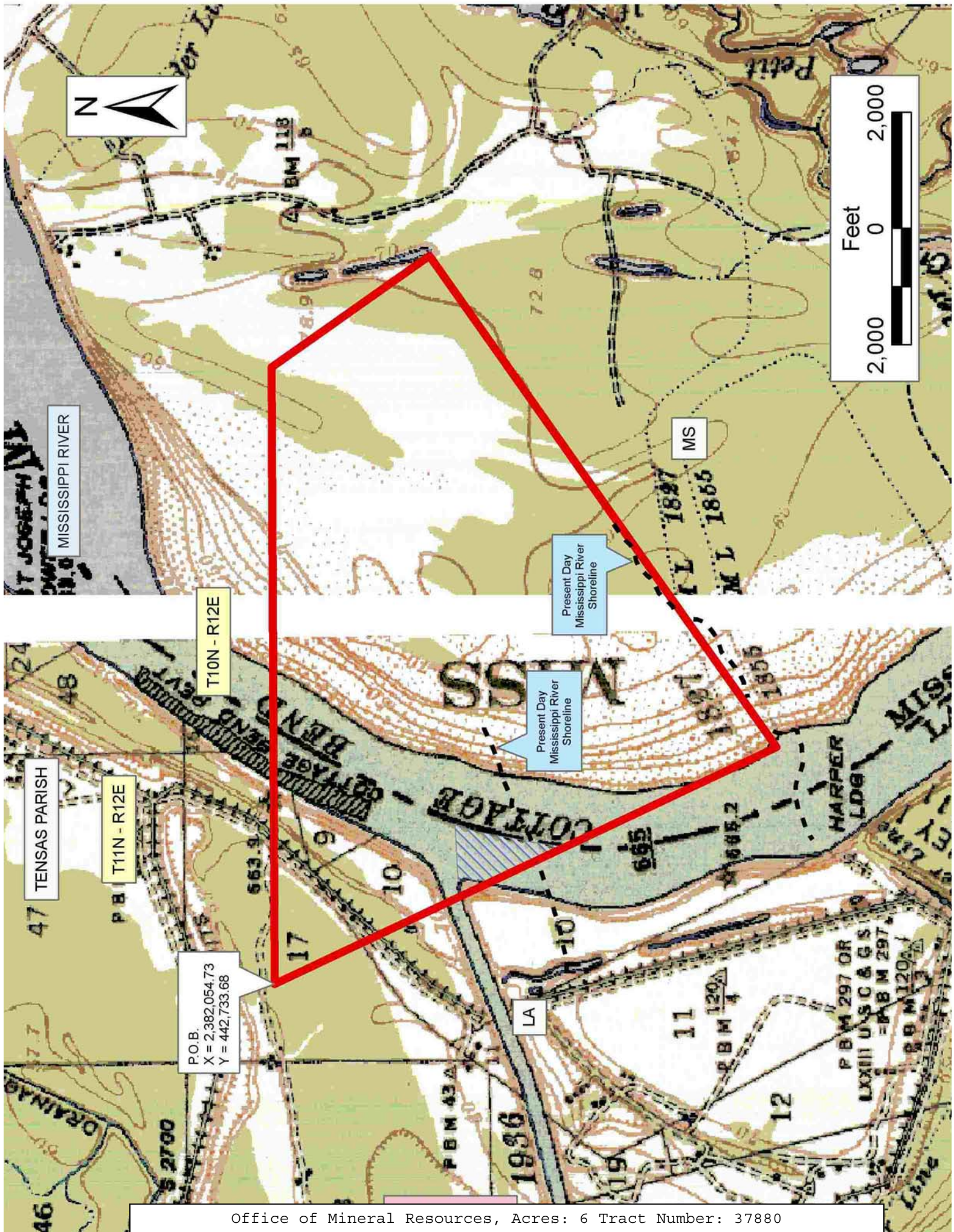
All of the lands now or formerly constituting the beds and bottoms of all water bodies of every nature and description the title of which vests in the State of Louisiana, together with all islands arising therein and other lands formed by accretion or by reliction, where allowed by law, excepting tax adjudicated lands, and not presently under mineral lease on October 12, 2005, situated in Tensas Parish, Louisiana, and more particularly described as follows: Beginning at a point having Coordinates of X = 2,382,054.73 and Y = 442,733.68; thence East 10,625.61 feet to a point having Coordinates of X = 2,392,680.34 and Y = 442,733.68; thence South 35 degrees 00 minutes 00 seconds East 3323.93 feet to a point having Coordinates of X = 2,394,586.86 and Y = 440,010.88; thence South 55 degrees 00 minutes 00 seconds West 10,364.73 feet to a point having Coordinates of X = 2,386,096.57 and Y = 434,065.91; thence North 25 degrees 00 minutes 00 seconds West 9563.82 feet to the point of beginning, containing **6 acres**, all as more particularly outlined on a plat on file in the Office of Mineral Resources, Department of Natural Resources. All bearings, distances and coordinates are based on Louisiana Coordinate System of 1927, (North or South Zone), where applicable.

NOTE: The above description of the Tract nominated for lease has been provided and corrected, where required, exclusively by the nomination party. Any mineral lease selected from this Tract and awarded by the Louisiana State Mineral Board shall be without warranty of any kind, either express, implied, or statutory, including, but not limited to, the implied warranties of merchantability and fitness for a particular purpose. Should the mineral lease awarded by the Louisiana State Mineral Board be subsequently modified, cancelled or abrogated due to the existence of conflicting leases, operating agreements, private claims or other future obligations or conditions which may affect all or any portion of the leased Tract, it shall not relieve the Lessee of the obligation to pay any bonus due thereon to the Louisiana State Mineral Board, nor shall the Louisiana State Mineral Board be obligated to refund any consideration paid by the Lessor prior to such modification, cancellation, or abrogation, including, but not limited to, bonuses, rentals and royalties.

Applicant: FRUSTUM RESOURCES

Bidder	Cash Payment	Price/Acre	Rental	Oil	Gas	Other





MISSISSIPPI RIVER

T10N - R12E

Present Day Mississippi River Shoreline

Present Day Mississippi River Shoreline

TENSAS PARISH

T11N - R12E

P.O.B.  
X = 2,382,054.73  
Y = 442,733.68

LA



**TRACT 37881 - Tensas Parish, Louisiana**

All of the lands now or formerly constituting the beds and bottoms of all water bodies of every nature and description the title of which vests in the State of Louisiana, together with all islands arising therein and other lands formed by accretion or by reliction, where allowed by law, excepting tax adjudicated lands, and not presently under mineral lease on October 12, 2005, situated in Tensas Parish, Louisiana, and more particularly described as follows: Beginning at a point having Coordinates of X = 2,387,075.43 and Y = 431,966.74; thence South 65 degrees 00 minutes 00 seconds West 9477.64 feet to a point having Coordinates of X = 2,378,485.77 and Y = 427,961.32; thence North 25 degrees 00 minutes 00 seconds West 11,880.00 feet to a point having Coordinates of X = 2,373,465.07 and Y = 438,728.26; thence North 65 degrees 00 minutes 00 seconds East 9477.64 feet to a point having Coordinates of X = 2,382,054.73 and Y = 442,733.68; thence South 25 degrees 00 minutes 00 seconds East 11,880.00 feet to the point of beginning, containing approximately **145 acres**, all as more particularly outlined on a plat on file in the Office of Mineral Resources, Department of Natural Resources. All bearings, distances and coordinates are based on Louisiana Coordinate System of 1927, (North or South Zone), where applicable.

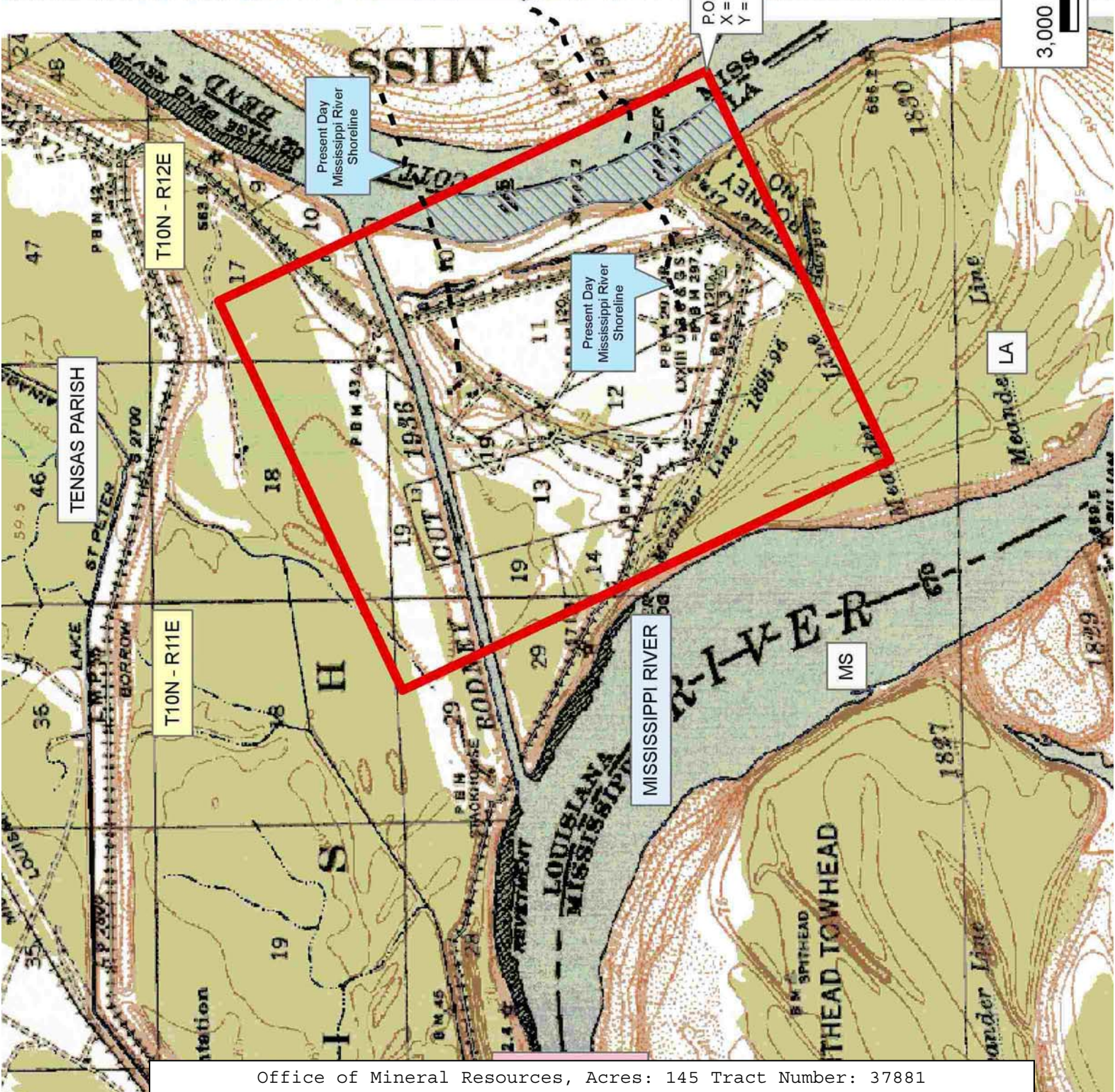
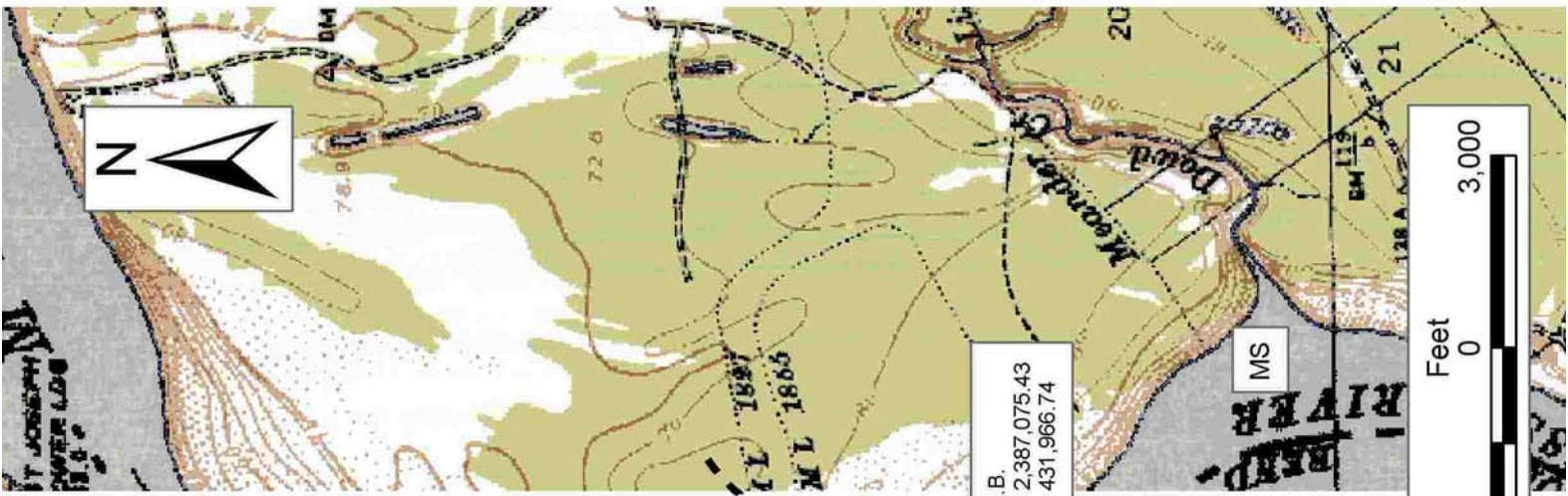
NOTE: The above description of the Tract nominated for lease has been provided and corrected, where required, exclusively by the nomination party. Any mineral lease selected from this Tract and awarded by the Louisiana State Mineral Board shall be without warranty of any kind, either express, implied, or statutory, including, but not limited to, the implied warranties of merchantability and fitness for a particular purpose. Should the mineral lease awarded by the Louisiana State Mineral Board be subsequently modified, cancelled or abrogated due to the existence of conflicting leases, operating agreements, private claims or other future obligations or conditions which may affect all or any portion of the leased Tract, it shall not relieve the Lessee of the obligation to pay any bonus due thereon to the Louisiana State Mineral Board, nor shall the Louisiana State Mineral Board be obligated to refund any consideration paid by the Lessor prior to such modification, cancellation, or abrogation, including, but not limited to, bonuses, rentals and royalties.

Bidder	Cash Payment	Price/Acre	Rental	Oil	Gas	Other



Applicant: FRUSTUM RESOURCES





Office of Mineral Resources, Acres: 145 Tract Number: 37881