

**TRACT 37862 - Morehouse Ouachita and Union Parishes, Louisiana**

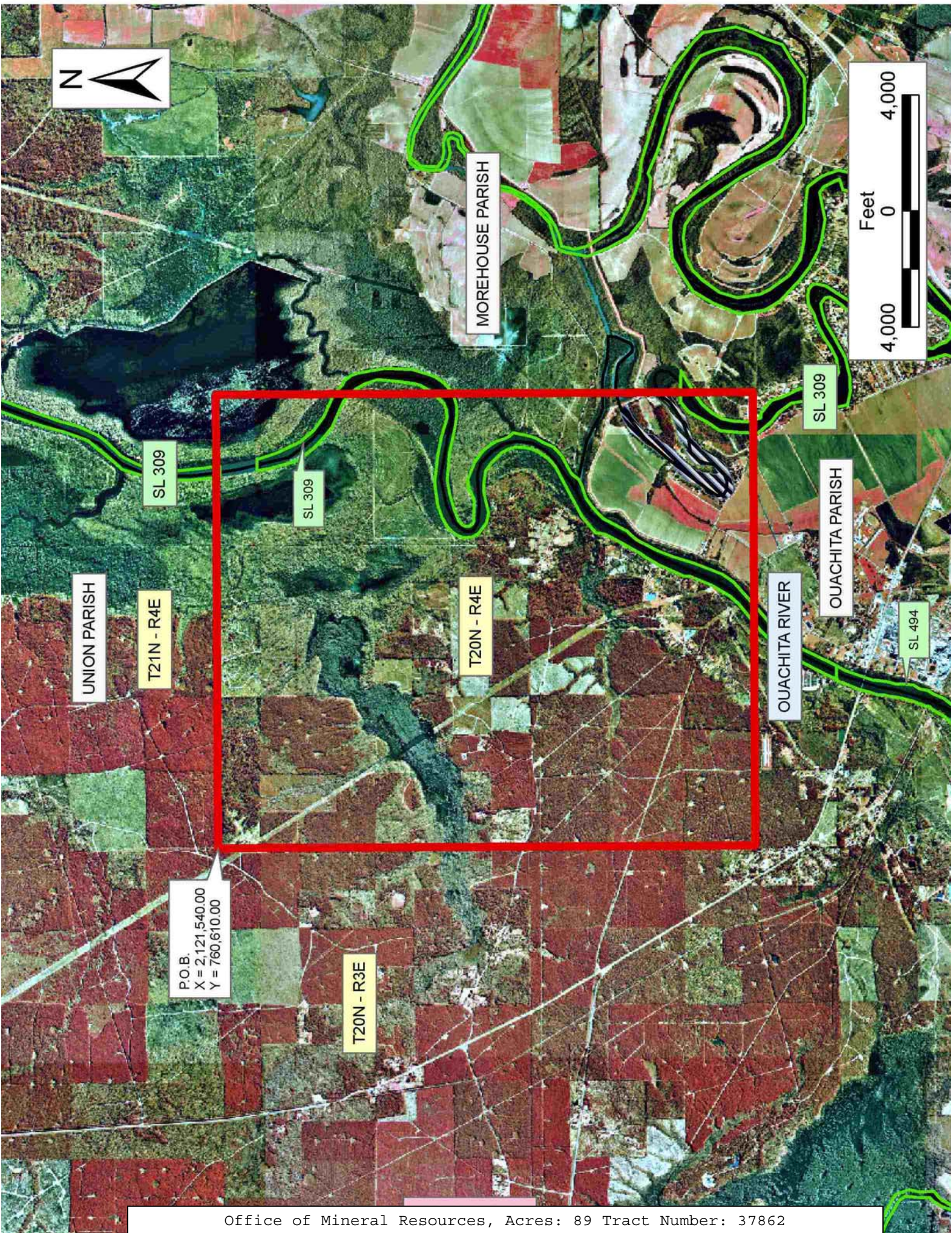
All of the lands now or formerly constituting the beds and bottoms of all water bodies of every nature and description the title of which vests in the State of Louisiana, together with all islands arising therein and other lands formed by accretion or by reliction, where allowed by law, excepting tax adjudicated lands, and not presently under mineral lease on October 12, 2005, situated in Morehouse Ouachita and Union Parishes, Louisiana, and more particularly described as follows: Beginning at a point having Coordinates of X = 2,121,540.00 and Y = 760,610.00; thence East 15,605.00 feet to a point having Coordinates of X = 2,137,145.00 and Y = 760,610.00; thence South 18,480.00 feet to a point having Coordinates of X = 2,137,145.00 and Y = 742,130.00; thence West 15,605.00 feet to a point having Coordinates of X = 2,121,540.00 and Y = 742,130.00; thence North 18,480.00 feet to the point of beginning, **LESS AND EXCEPT** all those portions of State Lease No. 309 and State Lease No. 494 that may lie within the above described tract, containing approximately **89 acres**, all as more particularly outlined on a plat on file in the Office of Mineral Resources, Department of Natural Resources. All bearings, distances and coordinates are based on Louisiana Coordinate System of 1927, (North or South Zone), where applicable.

NOTE: The above description of the Tract nominated for lease has been provided and corrected, where required, exclusively by the nomination party. Any mineral lease selected from this Tract and awarded by the Louisiana State Mineral Board shall be without warranty of any kind, either express, implied, or statutory, including, but not limited to, the implied warranties of merchantability and fitness for a particular purpose. Should the mineral lease awarded by the Louisiana State Mineral Board be subsequently modified, cancelled or abrogated due to the existence of conflicting leases, operating agreements, private claims or other future obligations or conditions which may affect all or any portion of the leased Tract, it shall not relieve the Lessee of the obligation to pay any bonus due thereon to the Louisiana State Mineral Board, nor shall the Louisiana State Mineral Board be obligated to refund any consideration paid by the Lessor prior to such modification, cancellation, or abrogation, including, but not limited to, bonuses, rentals and royalties.

NOTE: The above Tract is located upon a restricted scenic river and all operations in this area must be conducted in strict conformity with the regulations of the Corps of Engineers, U.S. Army.

Applicant: THEOPHILUS OIL GAS & LAND SERVICES LLC

Bidder	Cash Payment	Price/Acre	Rental	Oil	Gas	Other



**TRACT 37863 - Morehouse Ouachita and Union Parishes, Louisiana**

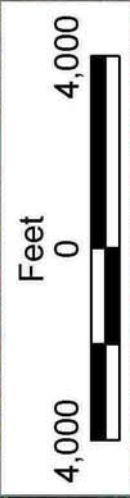
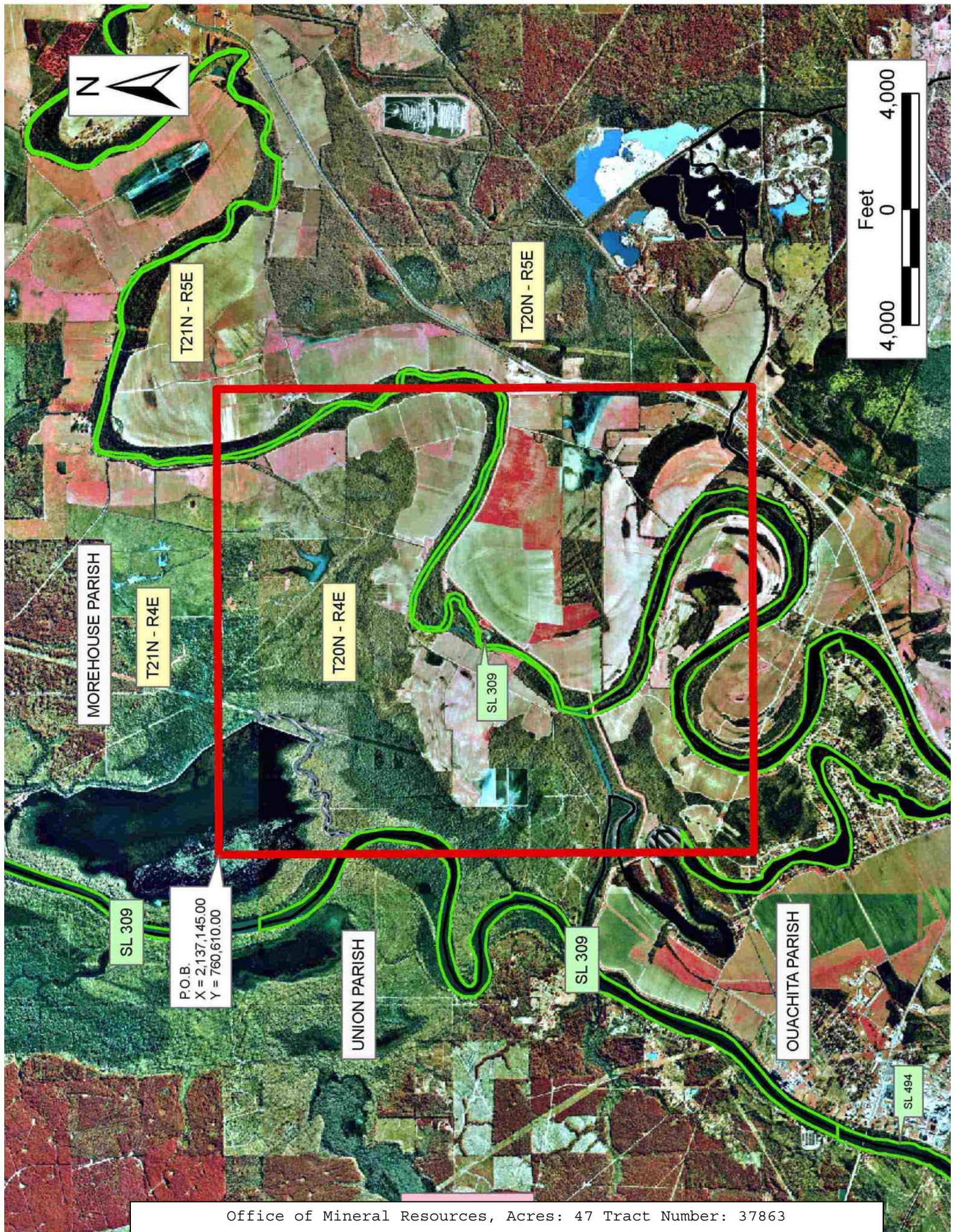
All of the lands now or formerly constituting the beds and bottoms of all water bodies of every nature and description the title of which vests in the State of Louisiana, together with all islands arising therein and other lands formed by accretion or by reliction, where allowed by law, excepting tax adjudicated lands, and not presently under mineral lease on October 12, 2005, situated in Morehouse Ouachita and Union Parishes, Louisiana, and more particularly described as follows: Beginning at a point having Coordinates of X = 2,137,145.00 and Y = 760,610.00; thence East 16,075.00 feet to a point having Coordinates of X = 2,153,220.00 and Y = 760,610.00; thence South 18,480.00 feet to a point having Coordinates of X = 2,153,220.00 and Y = 742,130.00; thence West 16,075.00 feet to a point having Coordinates of X = 2,137,145.00 and Y = 742,130.00; thence North 18,480.00 feet to the point of beginning, **LESS AND EXCEPT** all those portions of State Lease No. 309 and State Lease No. 494 that may lie within the above described tract, containing approximately **47 acres**, all as more particularly outlined on a plat on file in the Office of Mineral Resources, Department of Natural Resources. All bearings, distances and coordinates are based on Louisiana Coordinate System of 1927, (North or South Zone), where applicable.

NOTE: The above description of the Tract nominated for lease has been provided and corrected, where required, exclusively by the nomination party. Any mineral lease selected from this Tract and awarded by the Louisiana State Mineral Board shall be without warranty of any kind, either express, implied, or statutory, including, but not limited to, the implied warranties of merchantability and fitness for a particular purpose. Should the mineral lease awarded by the Louisiana State Mineral Board be subsequently modified, cancelled or abrogated due to the existence of conflicting leases, operating agreements, private claims or other future obligations or conditions which may affect all or any portion of the leased Tract, it shall not relieve the Lessee of the obligation to pay any bonus due thereon to the Louisiana State Mineral Board, nor shall the Louisiana State Mineral Board be obligated to refund any consideration paid by the Lessor prior to such modification, cancellation, or abrogation, including, but not limited to, bonuses, rentals and royalties.

NOTE: The above Tract is located upon a restricted scenic river and all operations in this area must be conducted in strict conformity with the regulations of the Corps of Engineers, U.S. Army.

Applicant: THEOPHILUS OIL GAS & LAND SERVICES LLC

Bidder	Cash Payment	Price/Acre	Rental	Oil	Gas	Other



T21N - R5E

T20N - R5E

MOREHOUSE PARISH

T21N - R4E

T20N - R4E

SL 309

P.O.B.  
X = 2,137,145.00  
Y = 760,610.00

UNION PARISH

SL 309

OUACHITA PARISH

SL 494

**TRACT 37864 - Morehouse and Ouachita Parishes, Louisiana**

All of the lands now or formerly constituting the beds and bottoms of all water bodies of every nature and description the title of which vests in the State of Louisiana, together with all islands arising therein and other lands formed by accretion or by reliction, where allowed by law, excepting tax adjudicated lands, and not presently under mineral lease on October 12, 2005, situated in Morehouse and Ouachita Parishes, Louisiana, and more particularly described as follows: Beginning at a point having Coordinates of X = 2,153,220.00 and Y = 760,610.00; thence East 15,840.00 feet to a point having Coordinates of X = 2,169,060.00 and Y = 760,610.00; thence South 18,480.00 feet to a point having Coordinates of X = 2,169,060.00 and Y = 742,130.00; thence West 15,840.00 feet to a point having Coordinates of X = 2,153,220.00 and Y = 742,130.00; thence North 18,480.00 feet to the point of beginning, **LESS AND EXCEPT** all those portions of State Lease No. 309 and State Lease No. 494 that may lie within the above described tract, containing approximately **8 acres**, all as more particularly outlined on a plat on file in the Office of Mineral Resources, Department of Natural Resources. All bearings, distances and coordinates are based on Louisiana Coordinate System of 1927, (North or South Zone), where applicable.

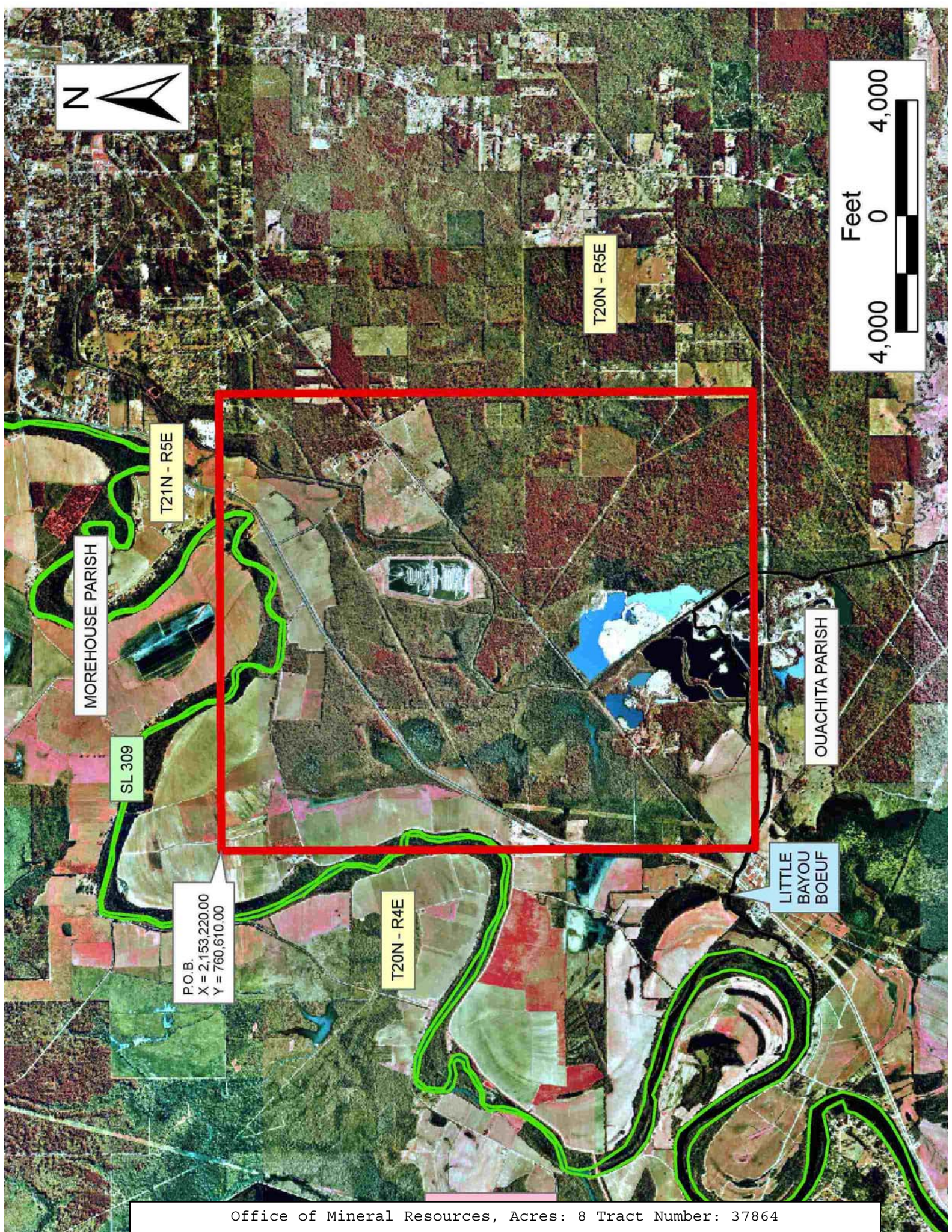
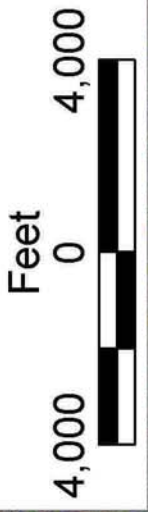
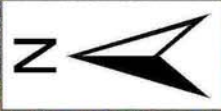
NOTE: The above description of the Tract nominated for lease has been provided and corrected, where required, exclusively by the nomination party. Any mineral lease selected from this Tract and awarded by the Louisiana State Mineral Board shall be without warranty of any kind, either express, implied, or statutory, including, but not limited to, the implied warranties of merchantability and fitness for a particular purpose. Should the mineral lease awarded by the Louisiana State Mineral Board be subsequently modified, cancelled or abrogated due to the existence of conflicting leases, operating agreements, private claims or other future obligations or conditions which may affect all or any portion of the leased Tract, it shall not relieve the Lessee of the obligation to pay any bonus due thereon to the Louisiana State Mineral Board, nor shall the Louisiana State Mineral Board be obligated to refund any consideration paid by the Lessor prior to such modification, cancellation, or abrogation, including, but not limited to, bonuses, rentals and royalties.

NOTE: The above Tract is located upon a restricted scenic river and all operations in this area must be conducted in strict conformity with the regulations of the Corps of Engineers, U.S. Army.

Applicant: THEOPHILUS OIL GAS & LAND SERVICES LLC

Bidder	Cash Payment	Price/Acre	Rental	Oil	Gas	Other





T20N - R5E

T21N - R5E

MOREHOUSE PARISH

SL 309

P.O.B.  
X = 2,153,220.00  
Y = 760,610.00

T20N - R4E

OUACHITA PARISH

LITTLE BAYOU BOEUF

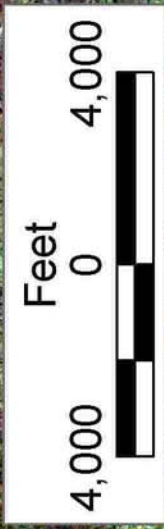
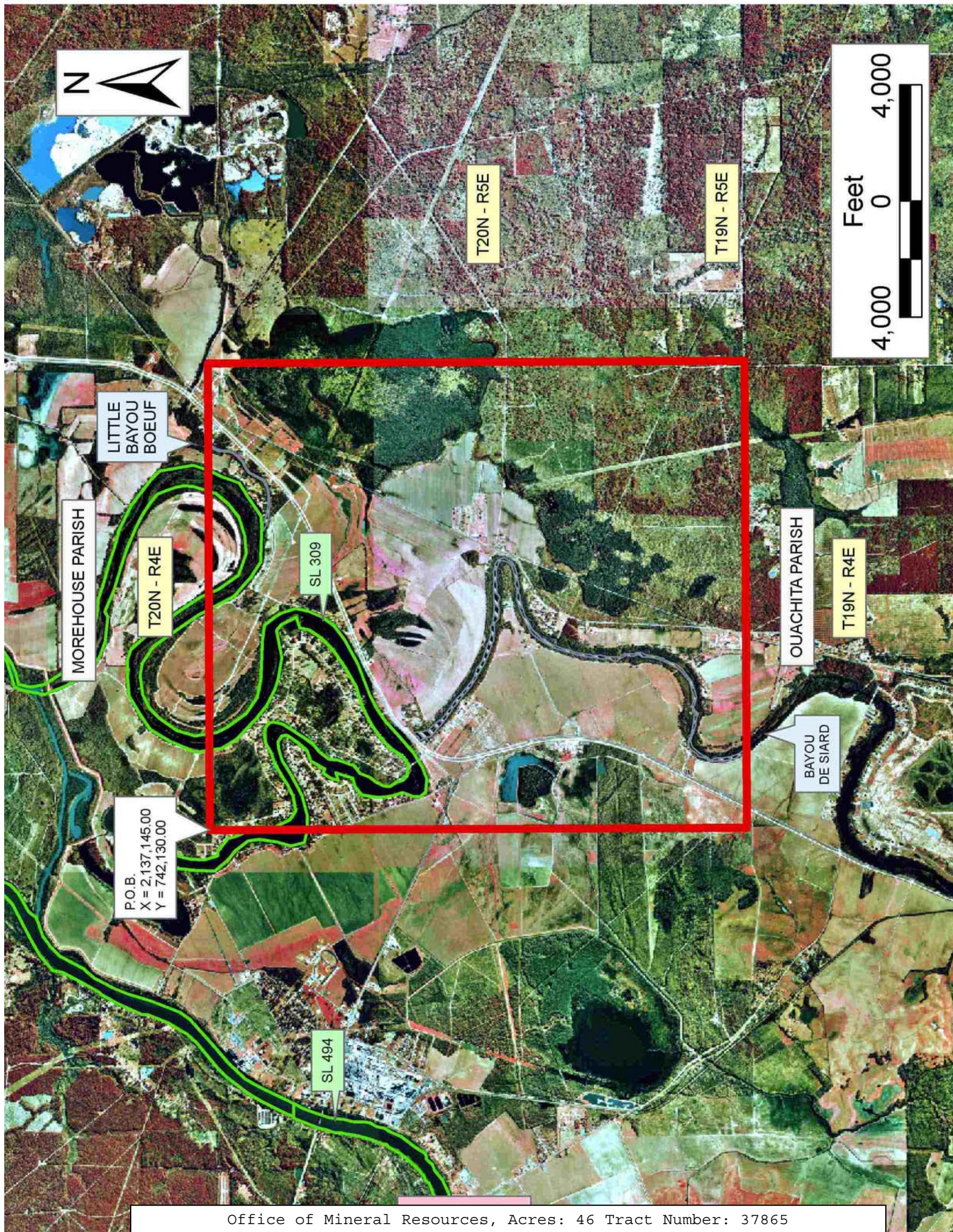
**TRACT 37865 - Morehouse and Ouachita Parishes, Louisiana**

All of the lands now or formerly constituting the beds and bottoms of all water bodies of every nature and description the title of which vests in the State of Louisiana, together with all islands arising therein and other lands formed by accretion or by reliction, where allowed by law, excepting tax adjudicated lands, and not presently under mineral lease on October 12, 2005, situated in Morehouse and Ouachita Parishes, Louisiana, and more particularly described as follows: Beginning at a point having Coordinates of X = 2,137,145.00 and Y = 742,130.00; thence East 16,075.00 feet to a point having Coordinates of X = 2,153,220.00 and Y = 742,130.00; thence South 18,480.00 feet to a point having Coordinates of X = 2,153,220.00 and Y = 723,650.00; thence West 16,075.00 feet to a point having Coordinates of X = 2,137,145.00 and Y = 723,650.00; thence North 18,480.00 feet to the point of beginning, **LESS AND EXCEPT** all those portions of State Lease No. 309 that may lie within the above described tract, containing approximately **46 acres**, all as more particularly outlined on a plat on file in the Office of Mineral Resources, Department of Natural Resources. All bearings, distances and coordinates are based on Louisiana Coordinate System of 1927, (North or South Zone), where applicable.

NOTE: The above description of the Tract nominated for lease has been provided and corrected, where required, exclusively by the nomination party. Any mineral lease selected from this Tract and awarded by the Louisiana State Mineral Board shall be without warranty of any kind, either express, implied, or statutory, including, but not limited to, the implied warranties of merchantability and fitness for a particular purpose. Should the mineral lease awarded by the Louisiana State Mineral Board be subsequently modified, cancelled or abrogated due to the existence of conflicting leases, operating agreements, private claims or other future obligations or conditions which may affect all or any portion of the leased Tract, it shall not relieve the Lessee of the obligation to pay any bonus due thereon to the Louisiana State Mineral Board, nor shall the Louisiana State Mineral Board be obligated to refund any consideration paid by the Lessor prior to such modification, cancellation, or abrogation, including, but not limited to, bonuses, rentals and royalties.

Bidder	Cash Payment	Price/Acre	Rental	Oil	Gas	Other

Applicant: THEOPHILUS OIL GAS & LAND SERVICES LLC



LITTLE  
BAYOU  
BOEUF

MOREHOUSE PARISH

T20N - R4E

SL 309

P.O.B.  
X = 2,137,145.00  
Y = 742,130.00

SL 494

T20N - R5E

T19N - R5E

OUACHITA PARISH

T19N - R4E

BAYOU  
DE SIARD

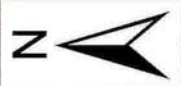
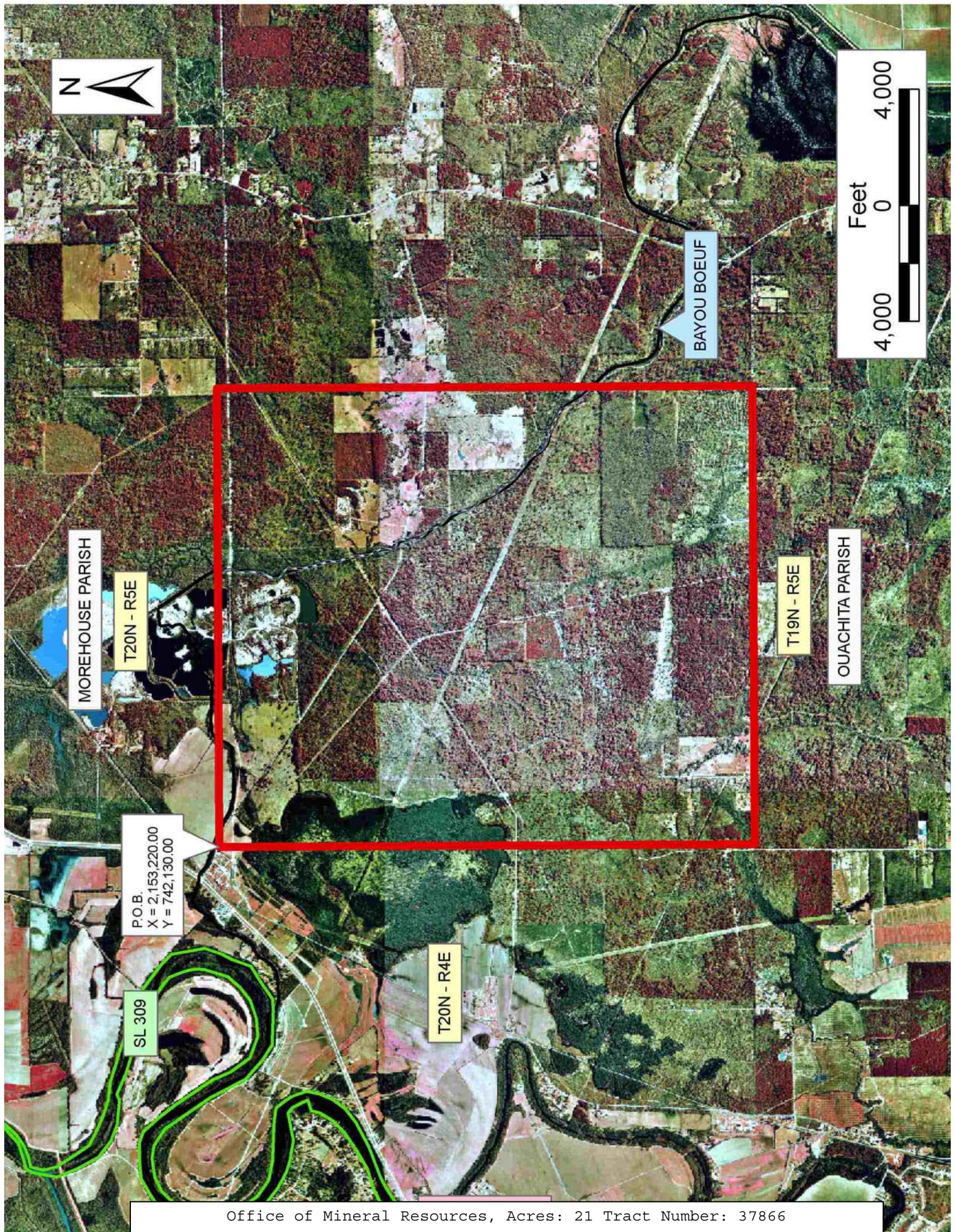
**TRACT 37866 - Morehouse and Ouachita Parishes, Louisiana**

All of the lands now or formerly constituting the beds and bottoms of all water bodies of every nature and description the title of which vests in the State of Louisiana, together with all islands arising therein and other lands formed by accretion or by reliction, where allowed by law, excepting tax adjudicated lands, and not presently under mineral lease on October 12, 2005, situated in Morehouse and Ouachita Parishes, Louisiana, and more particularly described as follows: Beginning at a point having Coordinates of X = 2,153,220.00 and Y = 742,130.00; thence East 15,840.00 feet to a point having Coordinates of X = 2,169,060.00 and Y = 742,130.00; thence South 18,480.00 feet to a point having Coordinates of X = 2,169,060.00 and Y = 723,650.00; thence West 15,840.00 feet to a point having Coordinates of X = 2,153,220.00 and Y = 723,650.00; thence North 18,480.00 feet to the point of beginning, containing approximately **21 acres**, all as more particularly outlined on a plat on file in the Office of Mineral Resources, Department of Natural Resources. All bearings, distances and coordinates are based on Louisiana Coordinate System of 1927, (North or South Zone), where applicable.

NOTE: The above description of the Tract nominated for lease has been provided and corrected, where required, exclusively by the nomination party. Any mineral lease selected from this Tract and awarded by the Louisiana State Mineral Board shall be without warranty of any kind, either express, implied, or statutory, including, but not limited to, the implied warranties of merchantability and fitness for a particular purpose. Should the mineral lease awarded by the Louisiana State Mineral Board be subsequently modified, cancelled or abrogated due to the existence of conflicting leases, operating agreements, private claims or other future obligations or conditions which may affect all or any portion of the leased Tract, it shall not relieve the Lessee of the obligation to pay any bonus due thereon to the Louisiana State Mineral Board, nor shall the Louisiana State Mineral Board be obligated to refund any consideration paid by the Lessor prior to such modification, cancellation, or abrogation, including, but not limited to, bonuses, rentals and royalties.

Applicant: THEOPHILUS OIL GAS & LAND SERVICES LLC

Bidder	Cash Payment	Price/Acre	Rental	Oil	Gas	Other



BAYOU BOEUF

MOREHOUSE PARISH

T20N - R5E

OUACHITA PARISH

T19N - R5E

P.O.B.  
X = 2,153,220.00  
Y = 742,130.00

SL 309

T20N - R4E



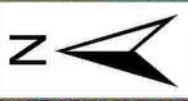
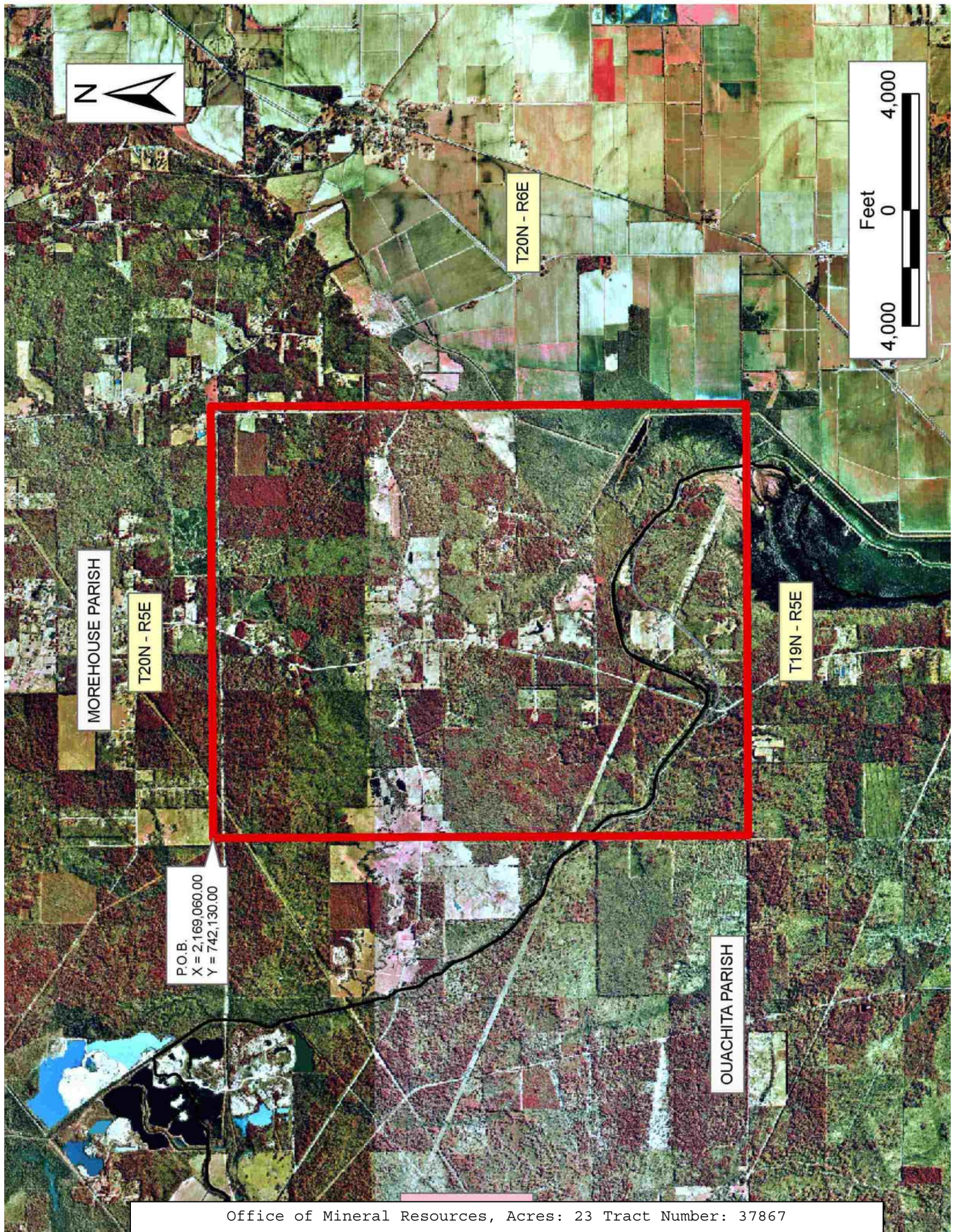
**TRACT 37867 - Morehouse and Ouachita Parishes, Louisiana**

All of the lands now or formerly constituting the beds and bottoms of all water bodies of every nature and description the title of which vests in the State of Louisiana, together with all islands arising therein and other lands formed by accretion or by reliction, where allowed by law, excepting tax adjudicated lands, and not presently under mineral lease on October 12, 2005, situated in Morehouse and Ouachita Parishes, Louisiana, and more particularly described as follows: Beginning at a point having Coordinates of X = 2,169,060.00 and Y = 742,130.00; thence East 14,900.00 feet to a point having Coordinates of X = 2,183,960.00 and Y = 742,130.00; thence South 18,480.00 feet to a point having Coordinates of X = 2,183,960.00 and Y = 723,650.00; thence West 14,900.00 feet to a point having Coordinates of X = 2,169,060.00 and Y = 723,650.00; thence North 18,480.00 feet to the point of beginning, containing approximately **23 acres**, all as more particularly outlined on a plat on file in the Office of Mineral Resources, Department of Natural Resources. All bearings, distances and coordinates are based on Louisiana Coordinate System of 1927, (North or South Zone), where applicable.

NOTE: The above description of the Tract nominated for lease has been provided and corrected, where required, exclusively by the nomination party. Any mineral lease selected from this Tract and awarded by the Louisiana State Mineral Board shall be without warranty of any kind, either express, implied, or statutory, including, but not limited to, the implied warranties of merchantability and fitness for a particular purpose. Should the mineral lease awarded by the Louisiana State Mineral Board be subsequently modified, cancelled or abrogated due to the existence of conflicting leases, operating agreements, private claims or other future obligations or conditions which may affect all or any portion of the leased Tract, it shall not relieve the Lessee of the obligation to pay any bonus due thereon to the Louisiana State Mineral Board, nor shall the Louisiana State Mineral Board be obligated to refund any consideration paid by the Lessor prior to such modification, cancellation, or abrogation, including, but not limited to, bonuses, rentals and royalties.

Applicant: THEOPHILUS OIL GAS & LAND SERVICES LLC

Bidder	Cash Payment	Price/Acre	Rental	Oil	Gas	Other



MOREHOUSE PARISH

T20N - R5E

T20N - R6E

T19N - R5E

OUACHITA PARISH

P.O.B.  
X = 2,169,060.00  
Y = 742,130.00



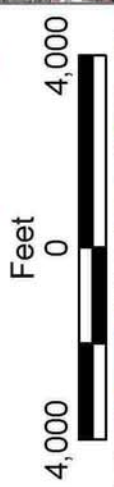
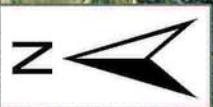
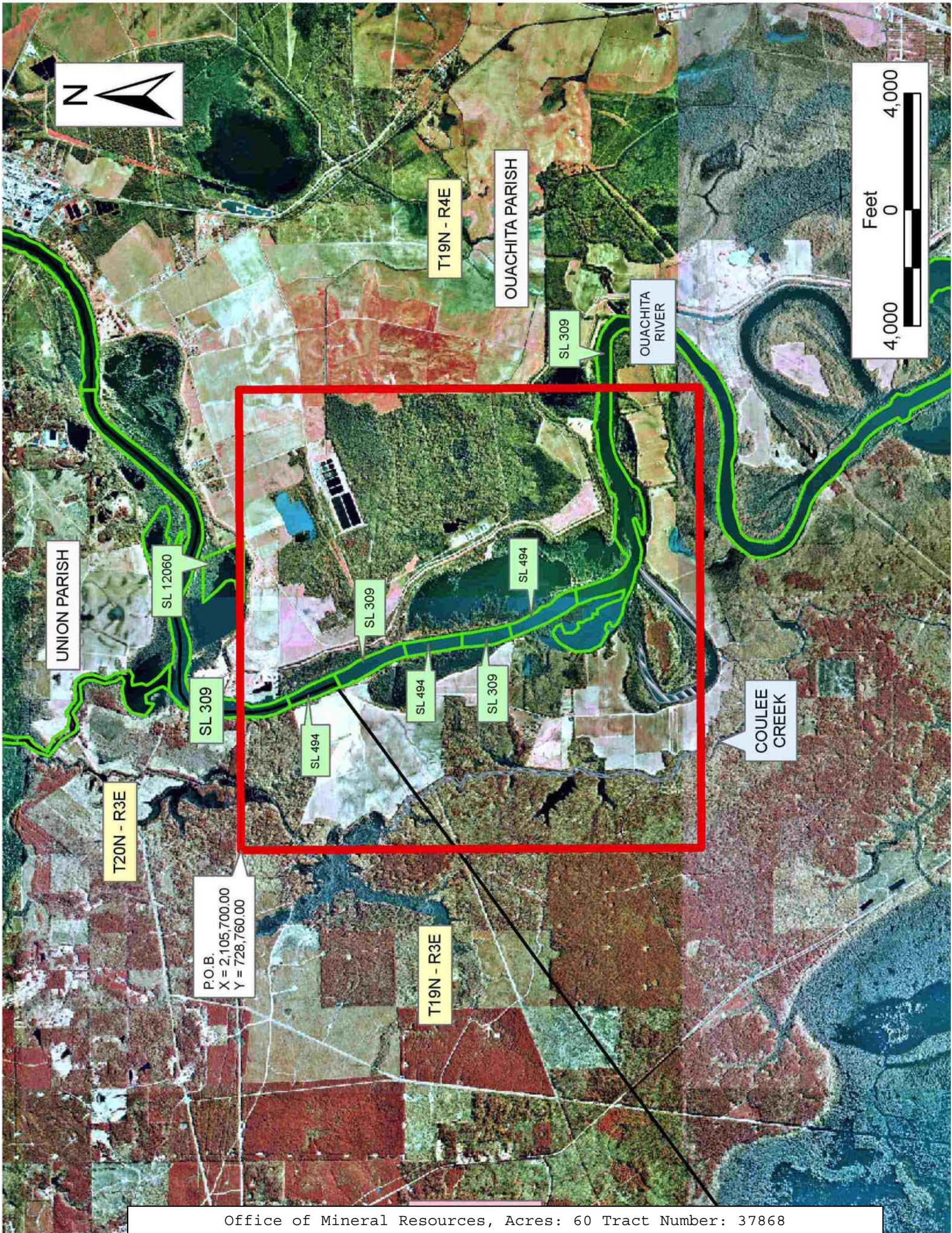
**TRACT 37868 - Ouachita and Union Parishes, Louisiana**

All of the lands now or formerly constituting the beds and bottoms of all water bodies of every nature and description the title of which vests in the State of Louisiana, together with all islands arising therein and other lands formed by accretion or by reliction, where allowed by law, excepting tax adjudicated lands, and not presently under mineral lease on October 12, 2005, situated in Ouachita and Union Parishes, Louisiana, and more particularly described as follows: Beginning at a point having Coordinates of X = 2,105,700.00 and Y = 728,760.00; thence East 15,840.00 feet to a point having Coordinates of X = 2,121,540.00 and Y = 728,760.00; thence South 15,840.00 feet to a point having Coordinates of X = 2,121,540.00 and Y = 712,920.00; thence West 15,840.00 feet to a point having Coordinates of X = 2,105,700.00 and Y = 712,920.00; thence North 15,840.00 feet to the point of beginning, **LESS AND EXCEPT** all those portions of State Lease No. 309 and State Lease No. 494 that may lie within the above described tract, containing approximately **60 acres**, all as more particularly outlined on a plat on file in the Office of Mineral Resources, Department of Natural Resources. All bearings, distances and coordinates are based on Louisiana Coordinate System of 1927, (North or South Zone), where applicable.

NOTE: The above description of the Tract nominated for lease has been provided and corrected, where required, exclusively by the nomination party. Any mineral lease selected from this Tract and awarded by the Louisiana State Mineral Board shall be without warranty of any kind, either express, implied, or statutory, including, but not limited to, the implied warranties of merchantability and fitness for a particular purpose. Should the mineral lease awarded by the Louisiana State Mineral Board be subsequently modified, cancelled or abrogated due to the existence of conflicting leases, operating agreements, private claims or other future obligations or conditions which may affect all or any portion of the leased Tract, it shall not relieve the Lessee of the obligation to pay any bonus due thereon to the Louisiana State Mineral Board, nor shall the Louisiana State Mineral Board be obligated to refund any consideration paid by the Lessor prior to such modification, cancellation, or abrogation, including, but not limited to, bonuses, rentals and royalties.

Bidder	Cash Payment	Price/Acre	Rental	Oil	Gas	Other

Applicant: THEOPHILUS OIL GAS & LAND SERVICES LLC



UNION PARISH

OUACHITA PARISH

OUACHITA RIVER

COULEE CREEK

T19N - R4E

T20N - R3E

T19N - R3E

SL 12060

SL 309

SL 494

SL 309

SL 494

SL 309

SL 494

P.O.B.  
X = 2,105,700.00  
Y = 728,760.00

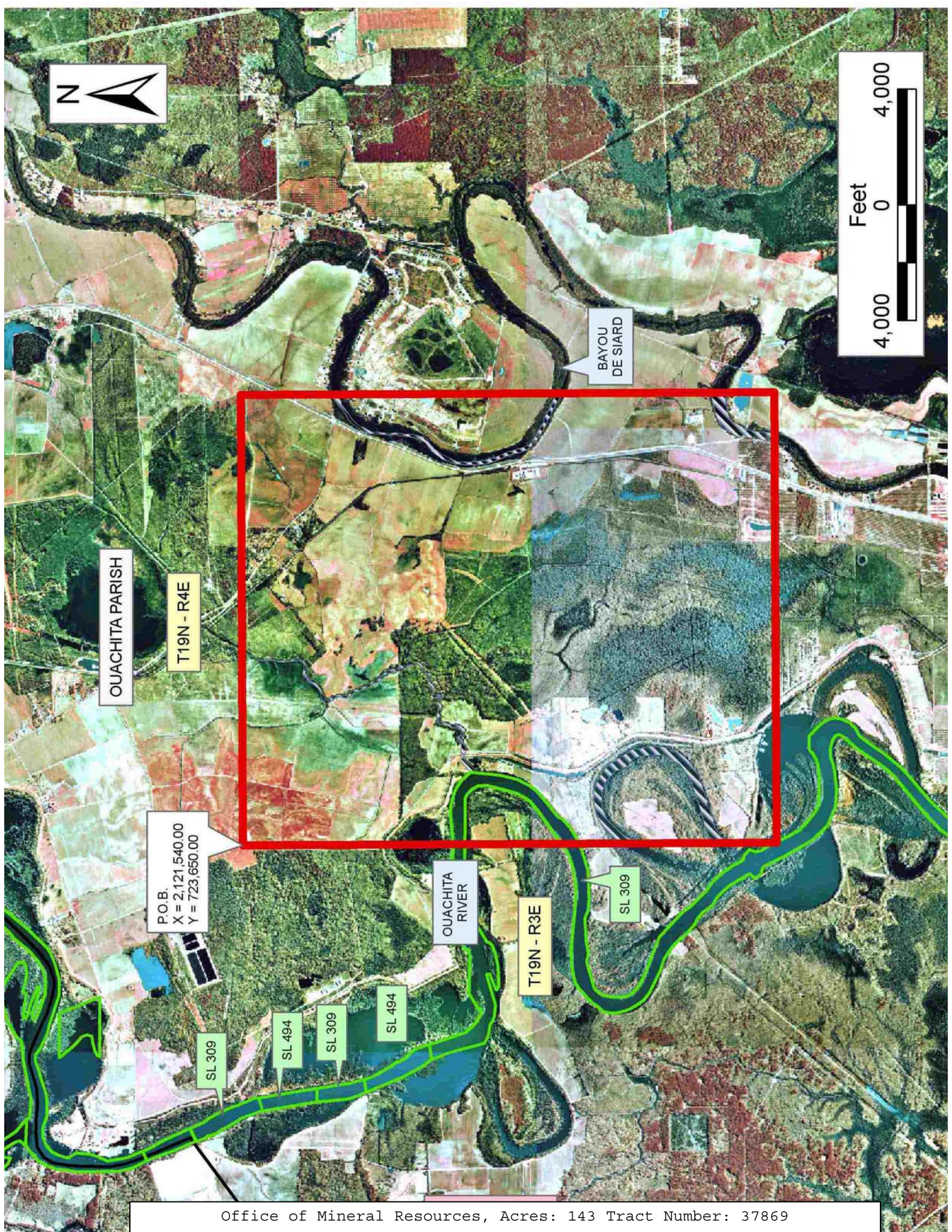
**TRACT 37869 - Ouachita Parish, Louisiana**

All of the lands now or formerly constituting the beds and bottoms of all water bodies of every nature and description the title of which vests in the State of Louisiana, together with all islands arising therein and other lands formed by accretion or by reliction, where allowed by law, excepting tax adjudicated lands, and not presently under mineral lease on October 12, 2005, situated in Ouachita Parish, Louisiana, and more particularly described as follows: Beginning at a point having Coordinates of X = 2,121,540.00 and Y = 723,650.00; thence East 15,605.00 feet to a point having Coordinates of X = 2,137,145.00 and Y = 723,650.00; thence South 18,480.00 feet to a point having Coordinates of X = 2,137,145.00 and Y = 705,170.00; thence West 15,605.00 feet to a point having Coordinates of X = 2,121,540.00 and Y = 705,170.00; thence North 18,480.00 feet to the point of beginning, **LESS AND EXCEPT** all those portions of State Lease No. 309 that may lie within the above described tract, containing approximately **143 acres**, all as more particularly outlined on a plat on file in the Office of Mineral Resources, Department of Natural Resources. All bearings, distances and coordinates are based on Louisiana Coordinate System of 1927, (North or South Zone), where applicable.

NOTE: The above description of the Tract nominated for lease has been provided and corrected, where required, exclusively by the nomination party. Any mineral lease selected from this Tract and awarded by the Louisiana State Mineral Board shall be without warranty of any kind, either express, implied, or statutory, including, but not limited to, the implied warranties of merchantability and fitness for a particular purpose. Should the mineral lease awarded by the Louisiana State Mineral Board be subsequently modified, cancelled or abrogated due to the existence of conflicting leases, operating agreements, private claims or other future obligations or conditions which may affect all or any portion of the leased Tract, it shall not relieve the Lessee of the obligation to pay any bonus due thereon to the Louisiana State Mineral Board, nor shall the Louisiana State Mineral Board be obligated to refund any consideration paid by the Lessor prior to such modification, cancellation, or abrogation, including, but not limited to, bonuses, rentals and royalties.

Applicant: THEOPHILUS OIL GAS & LAND SERVICES LLC

Bidder	Cash Payment	Price/Acre	Rental	Oil	Gas	Other



OUACHITA PARISH

T19N - R4E

P.O.B.  
X = 2,121,540.00  
Y = 723,650.00

OUACHITA RIVER

BAYOU DE SIARD

SL 309

SL 494

SL 309

SL 494

T19N - R3E

SL 309

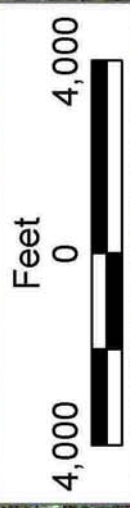
**TRACT 37870 - Ouachita Parish, Louisiana**

All of the lands now or formerly constituting the beds and bottoms of all water bodies of every nature and description the title of which vests in the State of Louisiana, together with all islands arising therein and other lands formed by accretion or by reliction, where allowed by law, excepting tax adjudicated lands, and not presently under mineral lease on October 12, 2005, situated in Ouachita Parish, Louisiana, and more particularly described as follows: Beginning at a point having Coordinates of X = 2,137,145.00 and Y = 723,650.00; thence East 16,075.00 feet to a point having Coordinates of X = 2,153,220.00 and Y = 723,650.00; thence South 18,480.00 feet to a point having Coordinates of X = 2,153,220.00 and Y = 705,170.00; thence West 16,075.00 feet to a point having Coordinates of X = 2,137,145.00 and Y = 705,170.00; thence North 18,480.00 feet to the point of beginning, containing approximately **154 acres**, all as more particularly outlined on a plat on file in the Office of Mineral Resources, Department of Natural Resources. All bearings, distances and coordinates are based on Louisiana Coordinate System of 1927, (North or South Zone), where applicable.

NOTE: The above description of the Tract nominated for lease has been provided and corrected, where required, exclusively by the nomination party. Any mineral lease selected from this Tract and awarded by the Louisiana State Mineral Board shall be without warranty of any kind, either express, implied, or statutory, including, but not limited to, the implied warranties of merchantability and fitness for a particular purpose. Should the mineral lease awarded by the Louisiana State Mineral Board be subsequently modified, cancelled or abrogated due to the existence of conflicting leases, operating agreements, private claims or other future obligations or conditions which may affect all or any portion of the leased Tract, it shall not relieve the Lessee of the obligation to pay any bonus due thereon to the Louisiana State Mineral Board, nor shall the Louisiana State Mineral Board be obligated to refund any consideration paid by the Lessor prior to such modification, cancellation, or abrogation, including, but not limited to, bonuses, rentals and royalties.

Applicant: THEOPHILUS OIL GAS & LAND SERVICES LLC

Bidder	Cash Payment	Price/Acre	Rental	Oil	Gas	Other



T19N - R5E

OJACHITA PARISH

T19N - R4E

P.O.B.  
X = 2,137,145.00  
Y = 723,650.00

BAYOU  
DE SIARD



**TRACT 37871 - Morehouse and Ouachita Parishes, Louisiana**

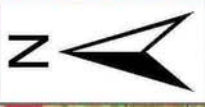
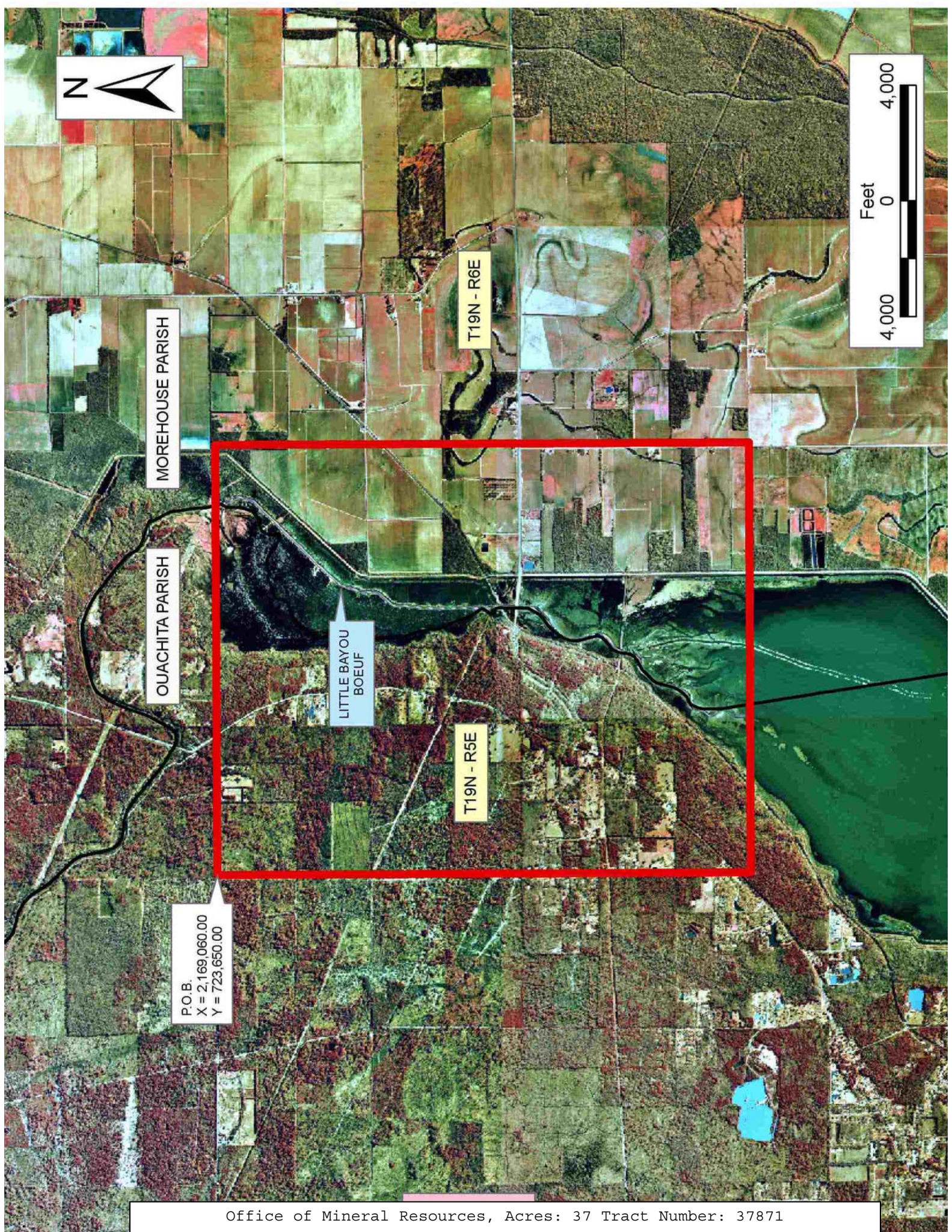
All of the lands now or formerly constituting the beds and bottoms of all water bodies of every nature and description the title of which vests in the State of Louisiana, together with all islands arising therein and other lands formed by accretion or by reliction, where allowed by law, excepting tax adjudicated lands, and not presently under mineral lease on October 12, 2005, situated in Morehouse and Ouachita Parishes, Louisiana, and more particularly described as follows: Beginning at a point having Coordinates of X = 2,169,060.00 and Y = 723,650.00; thence East 14,900.00 feet to a point having Coordinates of X = 2,183,960.00 and Y = 723,650.00; thence South 18,480.00 feet to a point having Coordinates of X = 2,183,960.00 and Y = 705,170.00; thence West 14,900.00 feet to a point having Coordinates of X = 2,169,060.00 and Y = 705,170.00; thence North 18,480.00 feet to the point of beginning, containing approximately **37 acres**, all as more particularly outlined on a plat on file in the Office of Mineral Resources, Department of Natural Resources. All bearings, distances and coordinates are based on Louisiana Coordinate System of 1927, (North or South Zone), where applicable.

NOTE: The above description of the Tract nominated for lease has been provided and corrected, where required, exclusively by the nomination party. Any mineral lease selected from this Tract and awarded by the Louisiana State Mineral Board shall be without warranty of any kind, either express, implied, or statutory, including, but not limited to, the implied warranties of merchantability and fitness for a particular purpose. Should the mineral lease awarded by the Louisiana State Mineral Board be subsequently modified, cancelled or abrogated due to the existence of conflicting leases, operating agreements, private claims or other future obligations or conditions which may affect all or any portion of the leased Tract, it shall not relieve the Lessee of the obligation to pay any bonus due thereon to the Louisiana State Mineral Board, nor shall the Louisiana State Mineral Board be obligated to refund any consideration paid by the Lessor prior to such modification, cancellation, or abrogation, including, but not limited to, bonuses, rentals and royalties.

Applicant: THEOPHILUS OIL GAS & LAND SERVICES LLC

Bidder	Cash Payment	Price/Acre	Rental	Oil	Gas	Other





MOREHOUSE PARISH

OUACHITA PARISH

T19N - R6E

T19N - R5E

LITTLE BAYOU  
BOEUF

P.O.B.  
X = 2,169,060.00  
Y = 723,650.00