

**TRACT 37858 - Portion of Blocks 5, and 7, Bay Marchand Area, Lafourche Parish, Louisiana**

The beds and bottoms of all water bodies belonging to the State of Louisiana located in Blocks 5, and 7, Bay Marchand Area, together with any present lands formed by accretion to the shoreline or islands formed therein, located in Lafourche Parish, Louisiana, owned by and not presently under mineral lease as of October 12, 2005, from the State of Louisiana, the geographical area of which is more fully described as follows: Beginning at a point on the South line of Block 5, Bay Marchand Area, said point also being on the North line of State Lease No. 18528, having Coordinates of X = 2,341,617.40 and Y = 134,330.00; thence North 21 degrees 37 minutes 46 seconds West 1,427.17 feet to a point on the common boundary line between said Block 5 and Block 7, Bay Marchand Area, having Coordinates of X = 2,341,091.35 and Y = 135,656.68; thence North 21 degrees 37 minutes 46 seconds West 10,999.94 feet to a point on the Southern boundary line of State Lease No. 192, as amended, having Coordinates of X = 2,337,036.74 and Y = 145,882.08; thence North 68 degrees 22 minutes 14 seconds East 5,559.65 feet along the Southern boundary of said State Lease No. 192, as amended, to its Southeast corner, said corner also being a point on the East line of said Block 07, having Coordinates of X = 2,342,204.92 and Y = 147,931.38; thence South 21 degrees 37 minutes 46 seconds East 10,999.90 feet along the East line of said Block 7 to its Southeast corner having Coordinates of X = 2,346,259.51 and Y = 137,706.01; thence South 21 degrees 37 minutes 46 seconds East 3,631.73 feet to a point on the South line of said Block 5, said point also being on the North line of said State Lease No. 18528, having Coordinates of X = 2,347,598.17 and Y = 134,330.00; thence West 5,980.77 along the South line of said Block 5 to the point of beginning, containing **1,726.78 acres, LESS AND EXCEPT** that portion thereof, if any, lying seaward of the line three nautical miles from the coast line of Louisiana, as said three mile line has been decreed by the Supreme Court of the United States, as determined by a Special Master appointed therein, in litigation styled **United States v. State of Louisiana et al No. 9 Original**, in 1975, all as more particularly outlined on a plat in the Office of Mineral Resources, Department of Natural Resources. All bearings, distances and coordinates are based on the Louisiana Coordinate System of 1927, (South Zone).

NOTE: The above description of the Tract nominated for lease has been provided and corrected, where required, exclusively by the nomination party. Any mineral lease selected from this Tract and awarded by the Louisiana State Mineral Board shall be without warranty of any kind, either express, implied, or statutory, including, but not limited to, the implied warranties of merchantability and fitness for a particular purpose. Should the mineral lease awarded by the Louisiana State Mineral Board be subsequently modified, cancelled or abrogated due to the existence of conflicting leases, operating agreements, private claims or other future obligations or conditions which may affect all or any portion of the leased Tract, it shall not relieve the Lessee of the obligation to

pay any bonus due thereon to the Louisiana State Mineral Board, nor shall the Louisiana State Mineral Board be obligated to refund any consideration paid by the Lessor prior to such modification, cancellation, or abrogation, including, but not limited to, bonuses, rentals and royalties.

NOTE: The State of Louisiana does hereby reserve, and this lease shall be subject to, the imprescriptible right of surface use in the nature of a servitude in favor of the Department of Natural Resources, including its Offices and Commissions, for the sole purpose of implementing, constructing, servicing and maintaining approved coastal zone management and/or restoration projects. Utilization of any and all rights derived under this lease by the mineral lessee, its agents, successors or assigns, shall not interfere with nor hinder the reasonable surface use by the Department of Natural Resources, its Offices or Commissions, as herein above reserved.

NOTE: It appears, according to our records, that a portion of this Tract is located within the restrictive safety fairway area as set out by the Corps of Engineers, U.S. Army and/or the restrictive anchorage area as set out by the U.S. Coast Guard.

NOTE: The Department of Wildlife and Fisheries has designated certain areas in the coastal waters of the State of Louisiana as Oyster Seed Bed Areas. The exact location of those Seed Bed Areas must be obtained from the Department of Wildlife and Fisheries and any work done under a mineral lease from the State of Louisiana may necessarily be conducted in conformity with the rules and regulations promulgated by the said Department of Wildlife and Fisheries for Oyster Seed Bed Areas.

Applicant: SIXMILE OIL CORPORATION

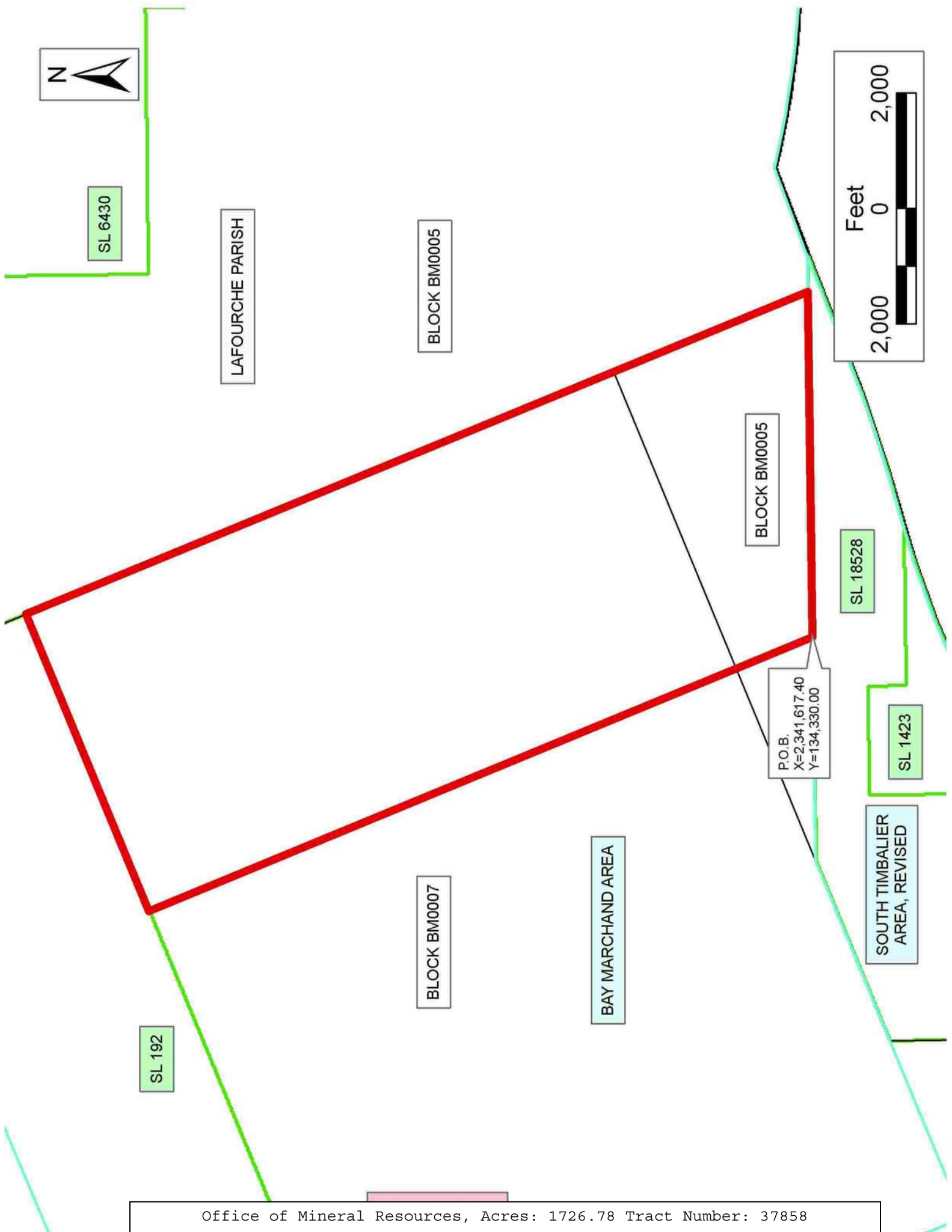
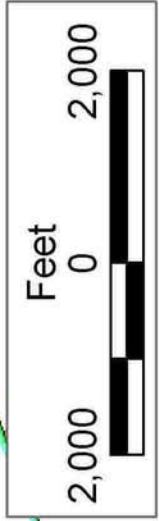
Bidder	Cash Payment	Price/Acre	Rental	Oil	Gas	Other



SL 6430

LAFOURCHE PARISH

BLOCK BM0005



BLOCK BM0005

SL 18528

P.O.B.  
X=2,341,617.40  
Y=134,330.00

SL 1423

SOUTH TIMBALIER  
AREA, REVISED

BLOCK BM0007

BAY MARCHAND AREA

SL 192

**TRACT 37859 - Portion of Block 6, Bay Marchand Area, Lafourche Parish, Louisiana**

The beds and bottoms of all water bodies belonging to the State of Louisiana located in Block 6, Bay Marchand Area, together with any present lands formed by accretion to the shoreline or islands formed therein, located in Lafourche Parish, Louisiana, owned by and not presently under mineral lease as of October 12, 2005, from the State of Louisiana, the geographical area of which is more fully described as follows: Beginning at the Southwest corner of Block 6, Bay Marchand Area, having Coordinates of X = 2,319,854.14 and Y = 134,330.00; thence North 9,054.96 feet along the West line of said Block 6 to a point on the Southern boundary of State Lease No. 1772, as amended, having Coordinates of X = 2,319,854.14 and Y = 143,384.96; thence along the boundary of said State Lease No. 1772, as amended, the following courses: North 67 degrees 35 minutes 37 seconds East 1,262.01 feet to a point having Coordinates of X = 2,321,020.87 and Y = 143,866.00, North 67 degrees 37 minutes 51 seconds East 525.53 feet to a point having Coordinates of X = 2,321,506.85 and Y = 144,066.00 and North 71 degrees 00 minutes 50 seconds East 1,014.33 feet to a point on the Coastline derived from the June 16, 1975 Decree in the United States vs. Louisiana No. 9 Original, having Coordinates of X = 2,322,466 and Y = 144,396; thence North 71 degrees 15 minutes 27 seconds East 3,816.96 feet along the said Coastline to a point on the Western boundary of State Lease No. 192, as amended, said point also being the Northeast corner of said Block 6 having Coordinates of X = 2,326,080.55 and Y = 145,622.45; thence South 21 degrees 37 minutes 46 seconds East 3,797.12 feet along the Western boundary of said State Lease No. 192, as amended, to its Southwest corner having Coordinates of X = 2,327,480.20 and Y = 142,092.70; thence South 21 degrees 37 minutes 46 seconds East 8,350.69 feet along the East line of said Block 6 to its Southeast corner having Coordinates of X = 2,330,558.27 and Y = 134,330.00; thence West 10,704.13 feet along the South line of said Block 6 to the point of beginning, containing **2,041.04 acres**, all as more particularly outlined on a plat on file in the Office of Mineral Resources, Department of Natural Resources. All bearings, distances and coordinates are based on Louisiana Coordinate System of 1927, (North or South Zone).

NOTE: The above description of the Tract nominated for lease has been provided and corrected, where required, exclusively by the nomination party. Any mineral lease selected from this Tract and awarded by the Louisiana State Mineral Board shall be without warranty of any kind, either express, implied, or statutory, including, but not limited to, the implied warranties of merchantability and fitness for a particular purpose. Should the mineral lease awarded by the Louisiana State Mineral Board be subsequently modified, cancelled or abrogated due to the existence of conflicting leases, operating agreements, private claims or other future obligations or conditions which may affect all or any portion of the leased Tract, it shall not relieve the Lessee of the obligation to pay any bonus due thereon to the Louisiana State Mineral Board, nor shall the Louisiana State Mineral Board be obligated to refund any consideration

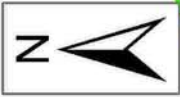
paid by the Lessor prior to such modification, cancellation, or abrogation, including, but not limited to, bonuses, rentals and royalties.

NOTE: The State of Louisiana does hereby reserve, and this lease shall be subject to, the imprescriptible right of surface use in the nature of a servitude in favor of the Department of Natural Resources, including its Offices and Commissions, for the sole purpose of implementing, constructing, servicing and maintaining approved coastal zone management and/or restoration projects. Utilization of any and all rights derived under this lease by the mineral lessee, its agents, successors or assigns, shall not interfere with nor hinder the reasonable surface use by the Department of Natural Resources, its Offices or Commissions, as herein above reserved.

NOTE: The Department of Wildlife and Fisheries has designated certain areas in the coastal waters of the State of Louisiana as Oyster Seed Bed Areas. The exact location of those Seed Bed Areas must be obtained from the Department of Wildlife and Fisheries and any work done under a mineral lease from the State of Louisiana may necessarily be conducted in conformity with the rules and regulations promulgated by the said Department of Wildlife and Fisheries for Oyster Seed Bed Areas.

Applicant: SIXMILE OIL CORPORATION

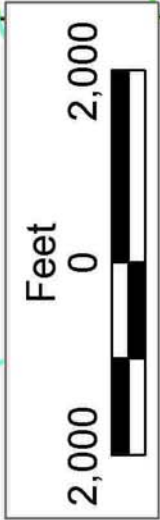
Bidder	Cash Payment	Price/Acre	Rental	Oil	Gas	Other



LAFOURCHE PARISH

BLOCK BM0007

BAY MARCHAND AREA



SL 192

BLOCK BM0006

BLOCK ST0020

P.O.B.  
X=2,319,854.14  
Y=134,330.00

SL 1772

BLOCK ST0015

SOUTH TIMBALIER  
AREA, REVISED

BLOCK ST0019

**TRACT 37860 - Portion of Blocks 5, and 7, Bay Marchand Area, Lafourche Parish, Louisiana**

The beds and bottoms of all water bodies belonging to the State of Louisiana located in Blocks 5, and 7, Bay Marchand Area, together with any present lands formed by accretion to the shoreline or islands formed therein, located in Lafourche Parish, Louisiana, owned by and not presently under mineral lease as of October 12, 2005, from the State of Louisiana, the geographical area of which is more fully described as follows: Beginning at a point on the South line of Block 5, Bay Marchand Area, said point also being on the North line of State Lease No. 18528, having Coordinates of X = 2,341,617.40 and Y = 134,330.00; thence West 3,871.78 feet along the South line of said Block 5 to a point on the common boundary line between said Block 5 and Block 7, Bay Marchand Area, having Coordinates of X = 2,337,745.62 and Y = 134,330.00; thence West 7,187.35 feet to the West line of Block 7 having Coordinates of X = 2,330,558.27 and Y = 134,330.00; thence North 21 degrees 37 minutes 46 seconds West 8,350.68 feet along the West line of said Block 7 to the Southwest corner of State Lease No. 192, as amended, having Coordinates of X = 2,327,480.18 and Y = 142,092.69; thence North 68 degrees 22 minutes 14 seconds East 10,280.43 feet along the Southern boundary of said State Lease No. 192, as amended, to a point having Coordinates of X = 2,337,036.74 and Y = 145,882.08; thence South 21 degrees 37 minutes 46 seconds East 10,999.94 feet to a point on the South line of said Block 7 having Coordinates of X = 2,341,091.35 and Y = 135,656.68; thence South 21 degrees 37 minutes 46 seconds East 1,427.17 feet to the point of beginning, containing **2,451.84 acres**, all as more particularly outlined on a plat on file in the Office of Mineral Resources, Department of Natural Resources. All bearings, distances and coordinates are based on Louisiana Coordinate System of 1927, (North or South Zone).

NOTE: The above description of the Tract nominated for lease has been provided and corrected, where required, exclusively by the nomination party. Any mineral lease selected from this Tract and awarded by the Louisiana State Mineral Board shall be without warranty of any kind, either express, implied, or statutory, including, but not limited to, the implied warranties of merchantability and fitness for a particular purpose. Should the mineral lease awarded by the Louisiana State Mineral Board be subsequently modified, cancelled or abrogated due to the existence of conflicting leases, operating agreements, private claims or other future obligations or conditions which may affect all or any portion of the leased Tract, it shall not relieve the Lessee of the obligation to pay any bonus due thereon to the Louisiana State Mineral Board, nor shall the Louisiana State Mineral Board be obligated to refund any consideration paid by the Lessor prior to such modification, cancellation, or abrogation, including, but not limited to, bonuses, rentals and royalties.

NOTE: The State of Louisiana does hereby reserve, and this lease shall be subject to, the imprescriptible right of surface use in the nature of a servitude in favor of the Department of Natural Resources, including its

Offices and Commissions, for the sole purpose of implementing, constructing, servicing and maintaining approved coastal zone management and/or restoration projects. Utilization of any and all rights derived under this lease by the mineral lessee, its agents, successors or assigns, shall not interfere with nor hinder the reasonable surface use by the Department of Natural Resources, its Offices or Commissions, as herein above reserved.

NOTE: It appears, according to our records, that a portion of this Tract is located within the restrictive safety fairway area as set out by the Corps of Engineers, U.S. Army and/or the restrictive anchorage area as set out by the U.S. Coast Guard.

NOTE: The Department of Wildlife and Fisheries has designated certain areas in the coastal waters of the State of Louisiana as Oyster Seed Bed Areas. The exact location of those Seed Bed Areas must be obtained from the Department of Wildlife and Fisheries and any work done under a mineral lease from the State of Louisiana may necessarily be conducted in conformity with the rules and regulations promulgated by the said Department of Wildlife and Fisheries for Oyster Seed Bed Areas.

Applicant: SIXMILE OIL CORPORATION

Bidder	Cash Payment	Price/Acre	Rental	Oil	Gas	Other





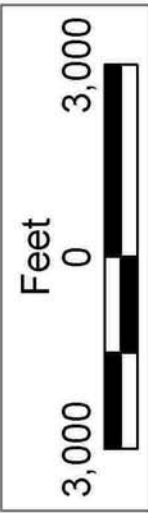
SL 6430

BLOCK BM0005

US

LA

P.O.B.  
X=2,341,617.40  
Y=134,330.00



SL 192

LAFOURCHE PARISH

BLOCK BM0007

SL 1423

SL 18528

SL 1772

BLOCK BM0006

BAY MARCHAND AREA

SOUTH TIMBALIER AREA, REVISED

**TRACT 37861 - Portion of Block 15, South Timbalier Area, Revised, Lafourche Parish, Louisiana**

The beds and bottoms of all water bodies belonging to the State of Louisiana located in Block 15, South Timbalier Area, Revised, together with any present lands formed by accretion to the shoreline or islands formed therein, located in Lafourche Parish, Louisiana, owned by and not presently under mineral lease as of October 12, 2005, from the State of Louisiana, the geographical area of which is more fully described as follows: Beginning at the Southeast corner of Block 15 South Timbalier Area, Revised, having Coordinates of X = 2,319,854.14 and Y = 134,330.00; thence West 13,157.14 feet along the South line of said Block 15 to a point having Coordinates of X = 2,306,697.00 and Y = 134,330.00; thence North 9,459.00 feet to a point on the Coastline derived from the June 16, 1975 Decree in the United States vs. Louisiana No. 9 Original, having Coordinates of X = 2,306,697 and Y = 143,789; thence along said Coastline the following courses: South 44 degrees 29 minutes 07 seconds East 1,023.23 feet to a point having Coordinates of X = 2,307,414 and Y = 143,059, South 59 degrees 57 minutes 48 seconds East 1,314.54 feet to a point having Coordinates of X = 2,308,552 and Y = 142,401, South 75 degrees 58 minutes 38 seconds East 2,055.25 feet to a point having Coordinates of X = 2,310,546 and Y = 141,903, South 86 degrees 53 minutes 35 seconds East 1,660.44 feet to a point having Coordinates of X = 2,312,204 and Y = 141,813, North 88 degrees 14 minutes 45 seconds East 1,698.80 feet to point having Coordinates of X = 2,313,902 and Y = 141,865 and North 75 degrees 03 minutes 12 seconds East 3,243.23 feet to a point on the Southern boundary of State Lease No. 1772, as amended, having Coordinates of X = 2,317,035.50 and Y = 142,701.49; thence along the boundary of said State Lease No. 1772, as amended, the following courses: South 89 degrees 58 minutes 33 seconds East 1,159.77 feet to a point having Coordinates of X = 2,318,195.27 and Y = 142,701.00 and North 67 degrees 35 minutes 37 seconds East 1,794.34 feet to the Northeast corner of said Block 6 having Coordinates of X = 2,319,854.14 and Y = 143,384.96; thence South 9,054.96 feet along the said Block 15 to the point of beginning, containing approximately **2,433.25 acres**, all as more particularly outlined on a plat on file in the Office of Mineral Resources, Department of Natural Resources. All bearings, distances and coordinates are based on Louisiana Coordinate System of 1927, (North or South Zone).

NOTE: The above description of the Tract nominated for lease has been provided and corrected, where required, exclusively by the nomination party. Any mineral lease selected from this Tract and awarded by the Louisiana State Mineral Board shall be without warranty of any kind, either express, implied, or statutory, including, but not limited to, the implied warranties of merchantability and fitness for a particular purpose. Should the mineral lease awarded by the Louisiana State Mineral Board be subsequently modified, cancelled or abrogated due to the existence of conflicting leases, operating agreements, private claims or other future obligations or conditions which may affect all or any portion

of the leased Tract, it shall not relieve the Lessee of the obligation to pay any bonus due thereon to the Louisiana State Mineral Board, nor shall the Louisiana State Mineral Board be obligated to refund any consideration paid by the Lessor prior to such modification, cancellation, or abrogation, including, but not limited to, bonuses, rentals and royalties.

NOTE: The State of Louisiana does hereby reserve, and this lease shall be subject to, the imprescriptible right of surface use in the nature of a servitude in favor of the Department of Natural Resources, including its Offices and Commissions, for the sole purpose of implementing, constructing, servicing and maintaining approved coastal zone management and/or restoration projects. Utilization of any and all rights derived under this lease by the mineral lessee, its agents, successors or assigns, shall not interfere with nor hinder the reasonable surface use by the Department of Natural Resources, its Offices or Commissions, as herein above reserved.

NOTE: The Department of Wildlife and Fisheries has designated certain areas in the coastal waters of the State of Louisiana as Oyster Seed Bed Areas. The exact location of those Seed Bed Areas must be obtained from the Department of Wildlife and Fisheries and any work done under a mineral lease from the State of Louisiana may necessarily be conducted in conformity with the rules and regulations promulgated by the said Department of Wildlife and Fisheries for Oyster Seed Bed Areas.

Applicant: SIXMILE OIL CORPORATION

Bidder	Cash Payment	Price/Acre	Rental	Oil	Gas	Other



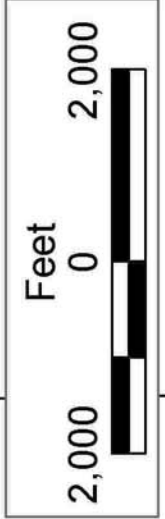
SL 1772

LAFOURCHE PARISH

BLOCK BM0006

BAY MARCHAND AREA

P.O.B.  
X=2,319,854.14  
Y=134,330.00



BLOCK ST0015

SOUTH TIMBALIER AREA, REVISED

BLOCK ST0019

