

**TRACT 35742 - Portion of Block 52, West Delta Area, Plaquemines Parish, Louisiana**

All of the lands now or formerly constituting the beds and bottoms of all water bodies of every nature and description the title of which vests in the State of Louisiana, together with all islands arising therein and other lands formed by accretion or by reliction, where allowed by law, excepting tax adjudicated lands, and not presently under mineral lease on October 8, 2003, situated in Plaquemines Parish, Louisiana, and more particularly described as follows: Beginning at the Southwest corner of Block 52, West Delta Area having Coordinates of X = 2,620,902.00 and Y = 144,676.30; thence North 10,109.72 feet on the West line of said Block 52 to its Northwest corner, also being a point on the South line of State Lease No. 192, as amended, having Coordinates of X = 2,620,902.00 and Y = 154,786.02; thence North 89 degrees 03 minutes 12 seconds East 5,476.68 feet on the North line of said Block 52, also being the South line of said State Lease No. 192, to a point having Coordinates of X = 2,626,377.93 and Y = 154,876.50; thence South 10,200.20 feet to a point on the South line of said Block 52 having Coordinates of X = 2,626,377.93 and Y = 144,676.30; thence West 5,475.93 feet to the point of beginning, **LESS AND EXCEPT** all that portion of said State Lease No. 192, as amended, that may lie within the above describe tract, containing approximately **1,276.58 acres**, all as more particularly outlined on a plat on file in the Office of Mineral Resources, Department of Natural Resources. All bearings, distances and coordinates are based on Louisiana Coordinate System of 1927, (North or South Zone), where applicable.

NOTE: The above description of the Tract nominated for lease has been provided and corrected, where required, exclusively by the nomination party. Any mineral lease selected from this Tract and awarded by the Louisiana State Mineral Board shall be without warranty of any kind, either express, implied, or statutory, including, but not limited to, the implied warranties of merchantability and fitness for a particular purpose. Should the mineral lease awarded by the Louisiana State Mineral Board be subsequently modified, cancelled or abrogated due to the existence of conflicting leases, operating agreements, private claims or other future obligations or conditions which may affect all or any portion of the leased Tract, it shall not relieve the Lessee of the obligation to pay any bonus due thereon to the Louisiana State Mineral Board, nor shall the Louisiana State Mineral Board be obligated to refund any consideration paid by the Lessor prior to such modification, cancellation, or abrogation, including, but not limited to, bonuses, rentals and royalties.

NOTE: The State of Louisiana does hereby reserve, and this lease shall be subject to, the imprescriptible right of surface use in the nature of a servitude in favor of the Department of Natural Resources, including its Offices and Commissions, for the sole purpose of implementing, constructing, servicing and maintaining approved coastal zone management and/or restoration projects. Utilization of any and all rights derived under this lease by the mineral lessee, its agents, successors or assigns,

shall not interfere with nor hinder the reasonable surface use by the Department of Natural Resources, its Offices or Commissions, as herein above reserved.

NOTE: The Department of Wildlife and Fisheries has designated certain areas in the coastal waters of the State of Louisiana as Oyster Seed Bed Areas. The exact location of those Seed Bed Areas must be obtained from the Department of Wildlife and Fisheries and any work done under a mineral lease from the State of Louisiana may necessarily be conducted in conformity with the rules and regulations promulgated by the said Department of Wildlife and Fisheries for Oyster Seed Bed Areas.

Applicant: Pinnacle Resources, Inc.

Bidder	Cash Payment	Price/ Acre	Rental	Oil	Gas	Other



S.L. 192

WEST BAY

PLAQUEMINES PARISH

BLOCK WD0051

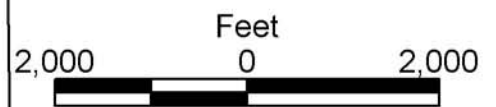
WEST DELTA AREA

BLOCK WD0052

P.O.B.  
X=2,620,902.00  
Y=144,676.30

BLOCK WD0054

BLOCK WD0053



**TRACT 35743 - Portion of Blocks 52, and 53, West Delta Area, Plaquemines Parish, Louisiana**

All of the lands now or formerly constituting the beds and bottoms of all water bodies of every nature and description the title of which vests in the State of Louisiana, together with all islands arising therein and other lands formed by accretion or by reliction, where allowed by law, excepting tax adjudicated lands, and not presently under mineral lease on October 8, 2003, situated in Plaquemines Parish, Louisiana, and more particularly described as follows: Beginning at a point on the South line of Block 52, West Delta Area having Coordinates of X = 2,626,377.93 and Y = 144,676.30; thence North 10,200.20 feet to a point on the North line of said Block 52, also being a point on the South line of State Lease No. 192 having Coordinates of X = 2,626,377.93 and Y = 154,876.50; thence North 89 degrees 03 minutes 12 seconds East 10,869.55 feet along the North line of said Block 52, and an extension thereof, to a point having Coordinates of X = 2,637,246.00 and Y = 155,056.07; thence South 8,538.07 feet to a point having Coordinates of X = 2,637,246.00 and Y = 146,518.00; thence South 63 degrees 05 minutes 31 seconds East 2,987.44 feet to a point having Coordinates of X = 2,639,910.00 and Y = 145,166.00; thence South 489.70 feet to a point on the South line of said Block 52 having Coordinates of X = 2,639,910.00 and Y = 144,676.30; thence West 6,560.00 feet on the South line of said Block 52 to the Southeast corner of AO 0263 having Coordinates of X = 2,633,350.00 and Y = 144,676.30; thence along the boundary of said AO 0263 the following courses: North 1,912.00 feet, West 2,037.07, and South 1,912.00 feet to its Southwest corner, also being a point on the South line of said Block 52 having Coordinates of X = 2,631,312.93 and Y = 144,676.30; thence West 4,935.00 feet to the point of beginning, **LESS AND EXCEPT** those portions of State Lease No. 192, State Lease No. 451, AO 0001, and AO 0028 that may lie within the above described tract, containing approximately **1,616 acres**, all as more particularly outlined on a plat on file in the Office of Mineral Resources, Department of Natural Resources. All bearings, distances and coordinates are based on Louisiana Coordinate System of 1927, (North or South Zone), where applicable.

NOTE: The above description of the Tract nominated for lease has been provided and corrected, where required, exclusively by the nomination party. Any mineral lease selected from this Tract and awarded by the Louisiana State Mineral Board shall be without warranty of any kind, either express, implied, or statutory, including, but not limited to, the implied warranties of merchantability and fitness for a particular purpose. Should the mineral lease awarded by the Louisiana State Mineral Board be subsequently modified, cancelled or abrogated due to the existence of conflicting leases, operating agreements, private claims or other future obligations or conditions which may affect all or any portion of the leased Tract, it shall not relieve the Lessee of the obligation to pay any bonus due thereon to the Louisiana State Mineral Board, nor shall the Louisiana State Mineral Board be obligated to refund any consideration

paid by the Lessor prior to such modification, cancellation, or abrogation, including, but not limited to, bonuses, rentals and royalties.

NOTE: The State of Louisiana does hereby reserve, and this lease shall be subject to, the imprescriptible right of surface use in the nature of a servitude in favor of the Department of Natural Resources, including its Offices and Commissions, for the sole purpose of implementing, constructing, servicing and maintaining approved coastal zone management and/or restoration projects. Utilization of any and all rights derived under this lease by the mineral lessee, its agents, successors or assigns, shall not interfere with nor hinder the reasonable surface use by the Department of Natural Resources, its Offices or Commissions, as herein above reserved.

NOTE: The Department of Wildlife and Fisheries has designated certain areas in the coastal waters of the State of Louisiana as Oyster Seed Bed Areas. The exact location of those Seed Bed Areas must be obtained from the Department of Wildlife and Fisheries and any work done under a mineral lease from the State of Louisiana may necessarily be conducted in conformity with the rules and regulations promulgated by the said Department of Wildlife and Fisheries for Oyster Seed Bed Areas.

Applicant: Pinnacle Resources, Inc.

Bidder	Cash Payment	Price/ Acre	Rental	Oil	Gas	Other





S.L. 451

A.O. 0001

A.O. 0001

A.O. 0028

S.L. 192

A.O. 0263

BLOCK WD0053

BLOCK WD0052

PLAQUEMINES PARISH

SCOTT BAY

WEST  
DELTA  
AREA

P.O.B.  
X=2,626,377.93  
Y=144,676.30

BLOCK WD0054



#### **TRACT 35744 - Plaquemines Parish, Louisiana**

All of the lands now or formerly constituting the beds and bottoms of all water bodies of every nature and description the title of which vests in the State of Louisiana, together with all islands arising therein and other lands formed by accretion or by reliction, where allowed by law, excepting tax adjudicated lands, and not presently under mineral lease on October 8, 2003, situated in Plaquemines Parish, Louisiana, and more particularly described as follows: Beginning at a point on the South line of Block 52, West Delta Area having Coordinates of X = 2,639,910.00 and Y = 144,676.30; thence North 489.70 feet to a point having Coordinates of X = 2,639,910.00 and Y = 145,166.00; thence North 63 degrees 05 minutes 31 seconds West 2,987.44 feet to a point having Coordinates of X = 2,637,246.00 and Y = 146,518.00; thence North approximately 288 feet to a point on the South line of AO 0001 having a Coordinate of X = 2,637,246.00; thence along the boundary of said AO 0001 the following courses: Easterly approximately 3,293 feet and Northerly approximately 5,280 feet to its Northeast corner, also being a point on the South line of AO 0028; thence Easterly approximately 2,215 feet on the South line of said AO 0028 to its most Easterly corner, also being a point on the South line of State Lease No. 451; thence Easterly approximately 1,077 feet on the South line of said State Lease No. 451 to its Southeast corner; thence Easterly approximately 3,132 feet to the most Southerly Southwest corner of State Lease No. 2485, as amended; thence Easterly approximately 1,789 feet on the South line of said State Lease No. 2485 to its Southeast corner, also being a point on the Western boundary of State Lease No. 1924; thence Southwesterly along the Western boundary of said State Lease No. 1924 to a point on the North line, or an extension thereof, said Block 52 having a Coordinate of Y = 144,676.30; thence West approximately 3,841 feet to the point of beginning, containing approximately **597 acres**, all as more particularly outlined on a plat on file in the Office of Mineral Resources, Department of Natural Resources. All bearings, distances and coordinates are based on Louisiana Coordinate System of 1927, (North or South Zone), where applicable.

NOTE: The above description of the Tract nominated for lease has been provided and corrected, where required, exclusively by the nomination party. Any mineral lease selected from this Tract and awarded by the Louisiana State Mineral Board shall be without warranty of any kind, either express, implied, or statutory, including, but not limited to, the implied warranties of merchantability and fitness for a particular purpose. Should the mineral lease awarded by the Louisiana State Mineral Board be subsequently modified, cancelled or abrogated due to the existence of conflicting leases, operating agreements, private claims or other future obligations or conditions which may affect all or any portion of the leased Tract, it shall not relieve the Lessee of the obligation to pay any bonus due thereon to the Louisiana State Mineral Board, nor shall the Louisiana State Mineral Board be obligated to refund any consideration paid by the Lessor prior to such modification, cancellation, or abrogation, including, but not limited to, bonuses, rentals and royalties.

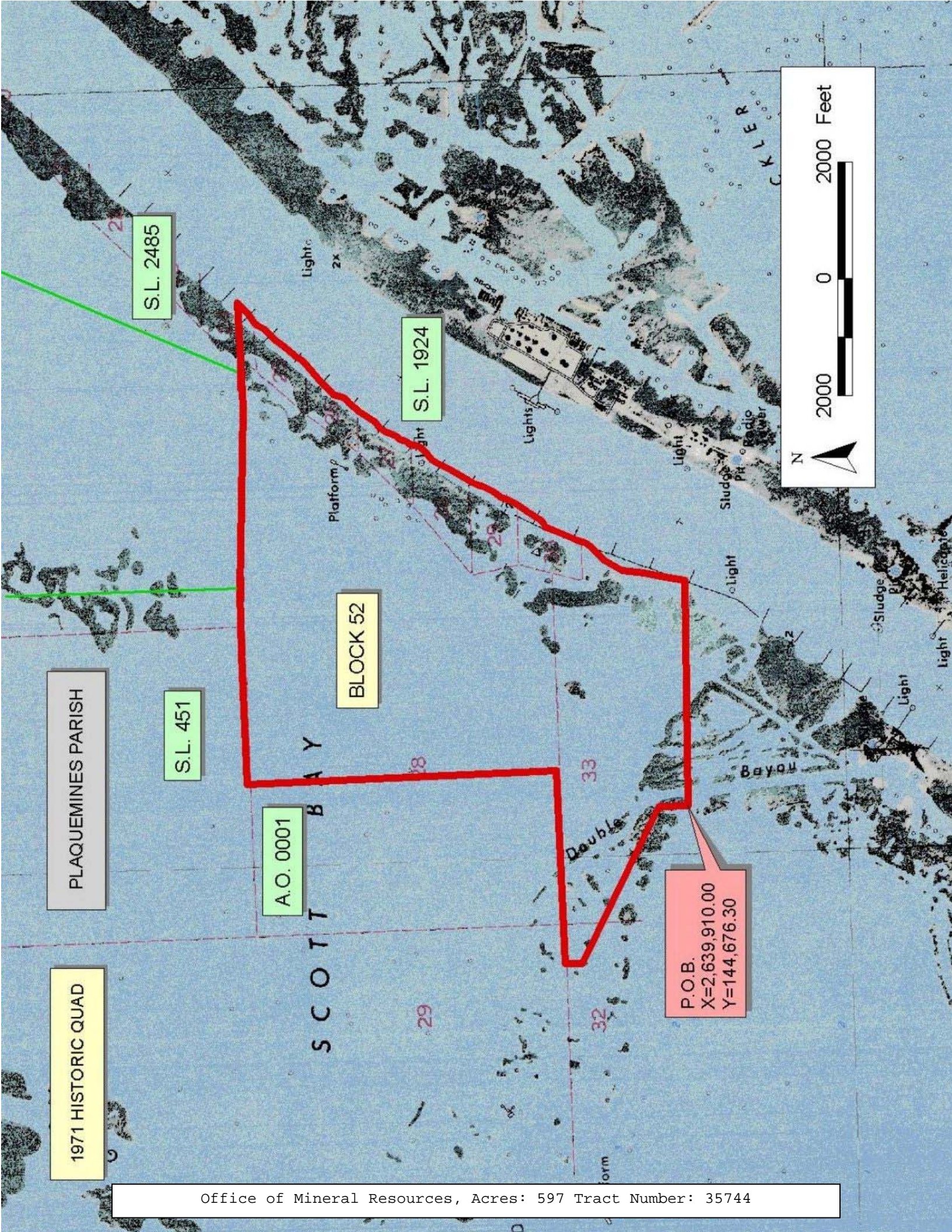
NOTE: The State of Louisiana does hereby reserve, and this lease shall be subject to, the imprescriptible right of surface use in the nature of a servitude in favor of the Department of Natural Resources, including its Offices and Commissions, for the sole purpose of implementing, constructing, servicing and maintaining approved coastal zone management and/or restoration projects. Utilization of any and all rights derived under this lease by the mineral lessee, its agents, successors or assigns, shall not interfere with nor hinder the reasonable surface use by the Department of Natural Resources, its Offices or Commissions, as herein above reserved.

NOTE: The Department of Wildlife and Fisheries has designated certain areas in the coastal waters of the State of Louisiana as Oyster Seed Bed Areas. The exact location of those Seed Bed Areas must be obtained from the Department of Wildlife and Fisheries and any work done under a mineral lease from the State of Louisiana may necessarily be conducted in conformity with the rules and regulations promulgated by the said Department of Wildlife and Fisheries for Oyster Seed Bed Areas.

Applicant: Pinnacle Resources, Inc.

Bidder	Cash Payment	Price/ Acre	Rental	Oil	Gas	Other





PLAQUEMINES PARISH

1971 HISTORIC QUAD

S.L. 451

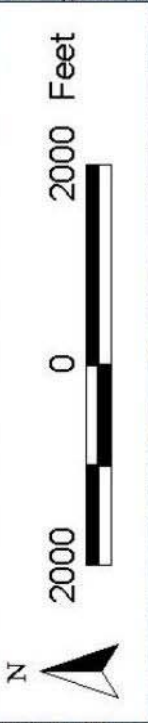
S.L. 2485

S.L. 1924

BLOCK 52

A.O. 0001

P.O.B.  
X=2,639,910.00  
Y=144,676.30





**TRACT 35745 - Portion of Block 53, West Delta Area, Plaquemines Parish, Louisiana**

All of the lands now or formerly constituting the beds and bottoms of all water bodies of every nature and description the title of which vests in the State of Louisiana, together with all islands arising therein and other lands formed by accretion or by reliction, where allowed by law, excepting tax adjudicated lands, and not presently under mineral lease on October 8, 2003, situated in Plaquemines Parish, Louisiana, and more particularly described as follows: Beginning at the Northwest corner of Block 53, West Delta Area, having Coordinates of X = 2,626,377.93 and Y = 144,676.30; thence East approximately 17,373 feet on the North line of said Block 53 to a point on the Western boundary of State Lease No. 1924 having a Coordinate of Y = 144,676.30; thence Southwesterly along the Western boundary of said State Lease No. 1924 to the Northeast corner of State Lease No. 2227 having a Coordinate of Y = 141,182.00; thence Westerly and Southwesterly along the boundary of said State Lease No. 2227 to a point on the Northern boundary of the East portion of State Lease No. 978, as amended, having a Coordinate of Y = 140,950.00; thence along the boundary of said State Lease No. 978 the following courses: West approximately 1,330 feet, South 23 degrees 16 minutes 44 seconds West 4,681.08 feet, and South 21 degrees 44 minutes 59 seconds East 1,506.24 feet to its most Southerly corner, also being the Northeast corner of State Lease No. 16825; thence Westerly approximately 2,490 feet along the North line of said State Lease No. 16825 to a point having Coordinates of X = 2,633,714.58 and Y = 135,250.99, thence West 2,172.23 feet along the said North line of said State Lease No. 16825 to its Northwest corner, also being a point on the Eastern boundary of AO 0105 having Coordinates of X = 2,631,542.36 and Y = 135,250.99; thence along the boundary of said AO 0105 the following courses: North 08 degrees 58 minutes 17 seconds East 228.10 feet and North 32 degrees 00 minutes 19 seconds West 2,830.19 feet to its Northwest corner, also being a point on the East line of the West portion of said State Lease No. 978 having Coordinates of X = 2,630,077.93 and Y = 137,876.30; thence along the boundary of said State Lease No. 978 the following courses: North 900.00 feet and West 3,700.00 feet to its Northwest corner, also being a point on the West line of said Block 53 having Coordinates of X = 2,626,377.93 and Y = 138,776.30; thence North 5,900.00 feet to the point of beginning, containing approximately **2,020 acres**, all as more particularly outlined on a plat on file in the Office of Mineral Resources, Department of Natural Resources. All bearings, distances and coordinates are based on Louisiana Coordinate System of 1927, (North or South Zone), where applicable.

NOTE: The above description of the Tract nominated for lease has been provided and corrected, where required, exclusively by the nomination party. Any mineral lease selected from this Tract and awarded by the Louisiana State Mineral Board shall be without warranty of any kind, either express, implied, or statutory, including, but not limited to, the implied warranties of merchantability and fitness for a particular purpose. Should the mineral lease awarded by the Louisiana State Mineral

Board be subsequently modified, cancelled or abrogated due to the existence of conflicting leases, operating agreements, private claims or other future obligations or conditions which may affect all or any portion of the leased Tract, it shall not relieve the Lessee of the obligation to pay any bonus due thereon to the Louisiana State Mineral Board, nor shall the Louisiana State Mineral Board be obligated to refund any consideration paid by the Lessor prior to such modification, cancellation, or abrogation, including, but not limited to, bonuses, rentals and royalties.

NOTE: The State of Louisiana does hereby reserve, and this lease shall be subject to, the imprescriptible right of surface use in the nature of a servitude in favor of the Department of Natural Resources, including its Offices and Commissions, for the sole purpose of implementing, constructing, servicing and maintaining approved coastal zone management and/or restoration projects. Utilization of any and all rights derived under this lease by the mineral lessee, its agents, successors or assigns, shall not interfere with nor hinder the reasonable surface use by the Department of Natural Resources, its Offices or Commissions, as herein above reserved.

NOTE: The Department of Wildlife and Fisheries has designated certain areas in the coastal waters of the State of Louisiana as Oyster Seed Bed Areas. The exact location of those Seed Bed Areas must be obtained from the Department of Wildlife and Fisheries and any work done under a mineral lease from the State of Louisiana may necessarily be conducted in conformity with the rules and regulations promulgated by the said Department of Wildlife and Fisheries for Oyster Seed Bed Areas.

Applicant: Pinnacle Resources, Inc.

Bidder	Cash Payment	Price/ Acre	Rental	Oil	Gas	Other



