

**TRACT 35723 - Portion of Block 17, Breton Sound Area, Plaquemines Parish, Louisiana**

All of the lands now or formerly constituting the beds and bottoms of all water bodies of every nature and description the title of which vests in the State of Louisiana, together with all islands arising therein and other lands formed by accretion or by reliction, where allowed by law, excepting tax adjudicated lands, and not presently under mineral lease on October 8, 2003, situated in Plaquemines Parish, Louisiana, and more particularly described as follows: Beginning at a point having Coordinates of X = 2,635,350.00 and Y = 351,830.00, said point being the Northwest corner of Block 17, Breton Sound Area; thence East 14,750.00 feet on and along the North line of said Block 17, Breton Sound Area, to a point having Coordinates of X = 2,650,100.00 and Y = 351,830.00, said point being the Northeast corner of said Block 17, Breton Sound Area; thence South 7,375.00 feet on and along the East line of said Block 17, Breton Sound Area, to a point having Coordinates of X = 2,650,100.00 and Y = 344,455.00; thence West 14,750.00 feet to a point having Coordinates of X = 2,635,350.00 and Y = 344,455.00, said point being on the West line of said Block 17, Breton Sound Area; thence North 7,375.00 feet on and along said West line of said Block 17, Breton Sound Area, to the point of beginning, containing approximately **2,497.27 acres**, all as more particularly outlined on a plat on file in the Office of Mineral Resources, Department of Natural Resources. All bearings, distances and coordinates are based on Louisiana Coordinate System of 1927, (North or South Zone), where applicable.

NOTE: The above description of the Tract nominated for lease has been provided and corrected, where required, exclusively by the nomination party. Any mineral lease selected from this Tract and awarded by the Louisiana State Mineral Board shall be without warranty of any kind, either express, implied, or statutory, including, but not limited to, the implied warranties of merchantability and fitness for a particular purpose. Should the mineral lease awarded by the Louisiana State Mineral Board be subsequently modified, cancelled or abrogated due to the existence of conflicting leases, operating agreements, private claims or other future obligations or conditions which may affect all or any portion of the leased Tract, it shall not relieve the Lessee of the obligation to pay any bonus due thereon to the Louisiana State Mineral Board, nor shall the Louisiana State Mineral Board be obligated to refund any consideration paid by the Lessor prior to such modification, cancellation, or abrogation, including, but not limited to, bonuses, rentals and royalties.

NOTE: The State of Louisiana does hereby reserve, and this lease shall be subject to, the imprescriptible right of surface use in the nature of a servitude in favor of the Department of Natural Resources, including its Offices and Commissions, for the sole purpose of implementing, constructing, servicing and maintaining approved coastal zone management and/or restoration projects. Utilization of any and all rights derived under this lease by the mineral lessee, its agents, successors or assigns,

shall not interfere with nor hinder the reasonable surface use by the Department of Natural Resources, its Offices or Commissions, as herein above reserved.

NOTE: It appears, according to our records, that a portion of this Tract is located within the restrictive safety fairway area as set out by the Corps of Engineers, U.S. Army and/or the restrictive anchorage area as set out by the U.S. Coast Guard.

Applicant: Robert A. Schroeder, Inc.

Bidder	Cash Payment	Price/ Acre	Rental	Oil	Gas	Other



BLOCK BS0015

BRETON  
SOUND  
AREA

BLOCK BS0018



BLOCK BS0016

BLOCK BS0017

P.O.B.  
X=2,635,350.00  
Y=351,830.00

BLOCK MP0009

ST BERNARD PARISH

PLAQUEMINES PARISH

MAIN PASS  
AREA, REVISED

BLOCK MP0016

**TRACT 35724 - Portion of Block 18, Breton Sound Area, Plaquemines Parish, Louisiana**

All of the lands now or formerly constituting the beds and bottoms of all water bodies of every nature and description the title of which vests in the State of Louisiana, together with all islands arising therein and other lands formed by accretion or by reliction, where allowed by law, excepting tax adjudicated lands, and not presently under mineral lease on October 8, 2003, situated in Plaquemines Parish, Louisiana, and more particularly described as follows: Beginning at a point having Coordinates of X = 2,650,100.00 and Y = 344,455.00, said point being the Northwest corner of Block 18, Breton Sound Area; thence East 14,750.00 feet on and along the North line of said Block 18, to a point having Coordinates of X = 2,650,100.00 and Y = 351,830.00, said point being the Northeast corner of said Block 18; thence South 7,375.00 feet on and along the East line of said Block 18, to a point having Coordinates of X = 2,664,850.00 and Y = 351,830.00, said point being on the Northern boundary of State Lease No. 16658; thence West 2,500.00 feet on and along said Northern boundary of said State Lease No. 16658 to a point having Coordinates of X = 2,664,850.00 and Y = 344,455.00, said point being the Northeast corner of said State Lease No. 16658; thence West 1,620.86 feet to a point having Coordinates of X = 2,660,729.14 and Y = 344,455.00, said point being on the Eastern boundary of State Lease No. 16442, as amended; thence on and along the Eastern, Northern and Western boundaries of State Lease Nos. 16442 and 16594, as amended, the following courses and distances, to wit: North 52 degrees 32 minutes 36 seconds East 144.70 feet to a point having Coordinates of X = 2,660,844.00 and Y = 344,543.00; North 38 degrees 08 minutes 49 seconds East 314.08 feet to a point having Coordinates of X = 2,661,038.00 and Y = 344,790.00; North 25 degrees 05 minutes 47 seconds East 174.47 feet to a point having Coordinates of X = 2,661,112.00 and Y = 344,948.00; North 13 degrees 04 minutes 51 seconds East 349.06 feet to a point having Coordinates of X = 2,661,191.00 and Y = 345,288.00; North 03 degrees 43 minutes 08 seconds East 200.42 feet to a point having Coordinates of X = 2,661,204.00 and Y = 345,488.00; North 04 degrees 18 minutes 00 seconds West 400.13 feet to a point having Coordinates of X = 2,661,174.00 and Y = 345,887.00; North 14 degrees 29 minutes 23 seconds West 643.47 feet to a point having Coordinates of X = 2,661,013.00 and Y = 346,510.00; North 26 degrees 26 minutes 51 seconds West 217.79 feet to a point having Coordinates of X = 2,660,916.00 and Y = 346,705.00; North 88 degrees 16 minutes 45 seconds West 1,136.96 feet to a point having Coordinates of X = 2,659,779.55 and Y = 346,739.14; North 85 degrees 10 minutes 31 seconds West 604.69 feet to a point having Coordinates of X = 2,659,177.00 and Y = 346,790.00; South 89 degrees 06 minutes 36 seconds West 708.09 feet to a point having Coordinates of X = 2,658,469.00 and Y = 346,779.00; South 82 degrees 09 minutes 17 seconds West 739.93 feet to a point having Coordinates of X = 2,657,736.00 and Y = 346,678.00; South 31 degrees 17 minutes 35 seconds West 119.36 feet to a point having Coordinates of X = 2,657,674.00 and Y = 346,576.00; South 18 degrees 26 minutes 06 seconds West 63.25 feet to a point having Coordinates of X = 2,657,654.00 and Y = 346,516.00; South 07 degrees 41 minutes 02 seconds

West 127.14 feet to a point having Coordinates of X = 2,657,637.00 and Y = 346,390.00; South 02 degrees 34 minutes 59 seconds East 133.14 feet to a point having Coordinates of X = 2,657,643.00 and Y = 346,257.00; South 11 degrees 18 minutes 36 seconds East 66.29 feet to a point having Coordinates of X = 2,657,656.00 and Y = 346,192.00; South 19 degrees 50 minutes 27 seconds East 103.12 feet to a point having Coordinates of X = 2,657,691.00 and Y = 346,095.00; South 32 degrees 21 minutes 48 seconds East 81.85 feet to a point having Coordinates of X = 2,657,734.81 and Y = 346,025.86; South 32 degrees 21 minutes 48 seconds East 121.78 feet to a point having Coordinates of X = 2,657,800.00 and Y = 345,923.00; South 39 degrees 12 minutes 03 seconds East 727.80 feet to a point having Coordinates of X = 2,658,260.00 and Y = 345,359.00; South 32 degrees 44 minutes 07 seconds East 49.93 feet to a point having Coordinates of X = 2,658,287.00 and Y = 345,317.00; South 30 degrees 34 minutes 45 seconds East 25.55 feet to a point having Coordinates of X = 2,658,300.00 and Y = 345,295.00; South 27 degrees 53 minutes 50 seconds East 38.47 feet to a point having Coordinates of X = 2,658,318.00 and Y = 345,261.00; South 25 degrees 12 minutes 04 seconds East 18.79 feet to a point having Coordinates of X = 2,658,326.00 and Y = 345,244.00; South 34 degrees 05 minutes 42 seconds East 78.49 feet to a point having Coordinates of X = 2,658,370.00 and Y = 345,179.00; South 12 degrees 31 minutes 44 seconds East 36.88 feet to a point having Coordinates of X = 2,658,378.00 and Y = 345,143.00; South 03 degrees 18 minutes 07 seconds East 52.09 feet to a point having Coordinates of X = 2,658,381.00 and Y = 345,091.00; South 19 degrees 54 minutes 59 seconds West 73.39 feet to a point having Coordinates of X = 2,658,356.00 and Y = 345,022.00; South 13 degrees 50 minutes 27 seconds West 71.06 feet to a point having Coordinates of X = 2,658,339.00 and Y = 344,953.00; South 16 degrees 34 minutes 26 seconds West 175.28 feet to a point having Coordinates of X = 2,658,289.00 and Y = 344,785.00; South 20 degrees 25 minutes 34 seconds West 309.46 feet to a point having Coordinates of X = 2,658,181.00 and Y = 344,495.00; and South 07 degrees 45 minutes 26 seconds West 40.37 feet to a point having Coordinates of X = 2,658,175.55 and Y = 344,455.00; thence West 8,075.55 feet to a point having Coordinates of X = 2,650,100.00 and Y = 344,455.00, said point being on the West line of said Block 18; thence North 7,375.00 feet on and along said West line of said Block 18, to the point of beginning, containing approximately **2,335.68 acres**, all as more particularly outlined on a plat on file in the Office of Mineral Resources, Department of Natural Resources. All bearings, distances and coordinates are based on Louisiana Coordinate System of 1927, (North or South Zone), where applicable.

NOTE: The above description of the Tract nominated for lease has been provided and corrected, where required, exclusively by the nomination party. Any mineral lease selected from this Tract and awarded by the Louisiana State Mineral Board shall be without warranty of any kind, either express, implied, or statutory, including, but not limited to, the implied warranties of merchantability and fitness for a particular purpose. Should the mineral lease awarded by the Louisiana State Mineral

Board be subsequently modified, cancelled or abrogated due to the existence of conflicting leases, operating agreements, private claims or other future obligations or conditions which may affect all or any portion of the leased Tract, it shall not relieve the Lessee of the obligation to pay any bonus due thereon to the Louisiana State Mineral Board, nor shall the Louisiana State Mineral Board be obligated to refund any consideration paid by the Lessor prior to such modification, cancellation, or abrogation, including, but not limited to, bonuses, rentals and royalties.

NOTE: The State of Louisiana does hereby reserve, and this lease shall be subject to, the imprescriptible right of surface use in the nature of a servitude in favor of the Department of Natural Resources, including its Offices and Commissions, for the sole purpose of implementing, constructing, servicing and maintaining approved coastal zone management and/or restoration projects. Utilization of any and all rights derived under this lease by the mineral lessee, its agents, successors or assigns, shall not interfere with nor hinder the reasonable surface use by the Department of Natural Resources, its Offices or Commissions, as herein above reserved.

NOTE: It appears, according to our records, that a portion of this Tract is located within the restrictive safety fairway area as set out by the Corps of Engineers, U.S. Army and/or the restrictive anchorage area as set out by the U.S. Coast Guard.

Applicant: Robert A. Schroeder, Inc.

Bidder	Cash Payment	Price/ Acre	Rental	Oil	Gas	Other



BLOCK BS0014

ST BERNARD PARISH

BLOCK BS0015

PLAQUEMINES PARISH

BLOCK BS0016

P.O.B.  
X=2,650,100.00  
Y=351,830.00

BRETON  
SOUND  
AREA

BLOCK BS0017

BLOCK BS0018

S.L. 16594

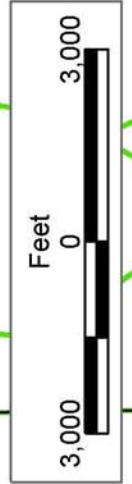
S.L. 16442

S.L. 16543

S.L. 16658

S.L. 16610

BLOCK BS0019



**TRACT 35725 - Portion of Block 19, Breton Sound Area, Plaquemines Parish, Louisiana**

All of the lands now or formerly constituting the beds and bottoms of all water bodies of every nature and description the title of which vests in the State of Louisiana, together with all islands arising therein and other lands formed by accretion or by reliction, where allowed by law, excepting tax adjudicated lands, and not presently under mineral lease on October 8, 2003, situated in Plaquemines Parish, Louisiana, and more particularly described as follows: Beginning at a point having Coordinates of X = 2,664,850.00 and Y = 351,830.00, said point being the Northwest corner of Block 19, Breton Sound Area; thence East 14,750.00 feet on and along the North line of said Block 19, Breton Sound Area, to a point having Coordinates of X = 2,679,600.00 and Y = 351,830.00, said point being the Northeast corner of said Block 19, Breton Sound Area; thence South 6,000.00 feet on and along the East line of said Block 19, Breton Sound Area, to a point having Coordinates of X = 2,679,600.00 and Y = 345,830.00, said point being on the Northern boundary of State Lease No. 17481; thence West 1,400.00 feet on and along said Northern boundary of said State Lease No. 17481 to a point having Coordinates of X = 2,678,200.00 and Y = 345,830.00, said point being on the Eastern boundary of State Lease No. 16823; thence on and along the Eastern, Northern, Western and Southern boundaries of State Lease No. 16823 the following courses and distances, to wit: North 19 degrees 05 minutes 37 seconds West 2,751.36 feet to a point having Coordinates of X = 2,677,300.00 and Y = 348,430.00, said point being the Northeast corner of said State Lease No. 16823; West 3,100.00 feet to a point having Coordinates of X = 2,674,200.00 and Y = 348,430.00, said point being the Northwest corner of said State Lease No. 16823; South 2,600.00 feet to a point having Coordinates of X = 2,674,200.00 and Y = 345,830.00, said point being the Southwest corner of said State Lease No. 16823; and East 4,000.00 feet to a point having Coordinates of X = 2,678,200.00 and Y = 345,830.00, said point being the Southeast corner of said State Lease No. 16823, said point also being on the Western boundary of said State Lease No. 17481; thence on and along the Western and Northern boundaries of State Lease No. 17481 the following courses and distances, to wit: South 750.00 feet to a point having Coordinates of X = 2,678,200.00 and Y = 345,080.00; West 800.00 feet to a point having Coordinates of X = 2,677,400.00 and Y = 345,080.00; and South 625.00 feet to a point having Coordinates of X = 2,677,400.00 and Y = 344,455.00; thence West 8,750.00 feet to a point having Coordinates of X = 2,668,650.00 and Y = 344,455.00, said point being on the Northern boundary of said State Lease No. 16610, as amended; thence West 3,800.00 feet on and along said Northern boundary of said State Lease No. 16610, as amended, to a point having Coordinates of X = 2,664,850.00 and Y = 344,455.00, said point being on the West line of said Block 19, Breton Sound Area; thence North 7,375.00 feet on and along said West line of said Block 19, Breton Sound Area, to the point of beginning, containing approximately **2,229.71 acres**, all as more particularly outlined on a plat on file in the Office of Mineral Resources, Department of Natural



Resources. All bearings, distances and coordinates are based on Louisiana Coordinate System of 1927, (North or South Zone), where applicable.

NOTE: The above description of the Tract nominated for lease has been provided and corrected, where required, exclusively by the nomination party. Any mineral lease selected from this Tract and awarded by the Louisiana State Mineral Board shall be without warranty of any kind, either express, implied, or statutory, including, but not limited to, the implied warranties of merchantability and fitness for a particular purpose. Should the mineral lease awarded by the Louisiana State Mineral Board be subsequently modified, cancelled or abrogated due to the existence of conflicting leases, operating agreements, private claims or other future obligations or conditions which may affect all or any portion of the leased Tract, it shall not relieve the Lessee of the obligation to pay any bonus due thereon to the Louisiana State Mineral Board, nor shall the Louisiana State Mineral Board be obligated to refund any consideration paid by the Lessor prior to such modification, cancellation, or abrogation, including, but not limited to, bonuses, rentals and royalties.

NOTE: The State of Louisiana does hereby reserve, and this lease shall be subject to, the imprescriptible right of surface use in the nature of a servitude in favor of the Department of Natural Resources, including its Offices and Commissions, for the sole purpose of implementing, constructing, servicing and maintaining approved coastal zone management and/or restoration projects. Utilization of any and all rights derived under this lease by the mineral lessee, its agents, successors or assigns, shall not interfere with nor hinder the reasonable surface use by the Department of Natural Resources, its Offices or Commissions, as herein above reserved.

Applicant: Robert A. Schroeder, Inc.

Bidder	Cash Payment	Price/ Acre	Rental	Oil	Gas	Other



BLOCK BS0013

BRETON  
SOUND  
AREA



BLOCK BS0014

P.O.B.  
X=2,664,850.00  
Y=351,830.00

S.L. 16823

S.L. 17482

BLOCK BS0020

S.L. 17481

BLOCK BS0019

S.L. 16610

ST BERNARD PARISH

PLAQUEMINES PARISH

BLOCK BS0015

S.L. 16658

BLOCK BS0018

**TRACT 35726 - Portion of Block 20, Breton Sound Area, Plaquemines Parish, Louisiana**

All of the lands now or formerly constituting the beds and bottoms of all water bodies of every nature and description the title of which vests in the State of Louisiana, together with all islands arising therein and other lands formed by accretion or by reliction, where allowed by law, excepting tax adjudicated lands, and not presently under mineral lease on October 8, 2003, situated in Plaquemines Parish, Louisiana, and more particularly described as follows: Beginning at a point having Coordinates of X = 2,679,600.00 and Y = 337,080.00, said point being the Southwest corner of Block 20, Breton Sound Area; thence North 4,390.00 feet on and along the West line of said Block 20, to a point having Coordinates of X = 2,679,600.00 and Y = 341,470.00, said point being on the Southern boundary of State Lease No. 17482; thence on and along the Southern, Eastern and Northern boundaries of said Lease No. 17482 the following courses and distances, to wit: East 500.00 feet to a point having Coordinates of X = 2,680,100.00 and Y = 341,470.00; South 490.00 feet to a point having Coordinates of X = 2,680,100.00 and Y = 340,980.00; East 2,950.00 feet to a point having Coordinates of X = 2,683,050.00 and Y = 340,980.00; North 2,610.00 feet to a point having Coordinates of X = 2,683,050.00 and Y = 343,590.00; West 1,950.00 feet to a point having Coordinates of X = 2,681,100.00 and Y = 343,590.00; North 1,490.00 feet to a point having Coordinates of X = 2,681,100.00 and Y = 345,080.00; West 330.00 feet to a point having Coordinates of X = 2,680,770.00 and Y = 345,080.00; North 750.00 feet to a point having Coordinates of X = 2,680,770.00 and Y = 345,830.00; and West 1,170.00 feet to a point having Coordinates of X = 2,679,600.00 and Y = 345,830.00, said point being on said West line of said Block 20; thence North 6,000.00 feet on and along said West line of said Block 20, to a point having Coordinates of X = 2,679,600.00 and Y = 351,830.00, said point being the Northwest corner of said Block 20; thence East 7,350.00 feet on and along the North line of said Block 20, to a point having Coordinates of X = 2,686,950.00 and Y = 351,830.00; thence South 11,062.50 feet to a point having Coordinates of X = 2,686,950.00 and Y = 340,767.50, said point being the Northwest corner of State Lease No. 1997, as amended; thence South 3,687.50 feet on and along the Western boundary of said State Lease No. 1997, as amended, to a point having Coordinates of X = 2,686,950.00 and Y = 337,080.00, said point being the Southwest corner of State Lease No. 1997, as amended, said point also being on the South line of said Block 20; thence West 7,350.00 feet on and along the South line of said Block 20, to the point of beginning, containing approximately **2,216.27 acres**, all as more particularly outlined on a plat on file in the Office of Mineral Resources, Department of Natural Resources. All bearings, distances and coordinates are based on Louisiana Coordinate System of 1927, (North or South Zone), where applicable.

NOTE: The above description of the Tract nominated for lease has been provided and corrected, where required, exclusively by the nomination party. Any mineral lease selected from this Tract and awarded by the

Louisiana State Mineral Board shall be without warranty of any kind, either express, implied, or statutory, including, but not limited to, the implied warranties of merchantability and fitness for a particular purpose. Should the mineral lease awarded by the Louisiana State Mineral Board be subsequently modified, cancelled or abrogated due to the existence of conflicting leases, operating agreements, private claims or other future obligations or conditions which may affect all or any portion of the leased Tract, it shall not relieve the Lessee of the obligation to pay any bonus due thereon to the Louisiana State Mineral Board, nor shall the Louisiana State Mineral Board be obligated to refund any consideration paid by the Lessor prior to such modification, cancellation, or abrogation, including, but not limited to, bonuses, rentals and royalties.

NOTE: The State of Louisiana does hereby reserve, and this lease shall be subject to, the imprescriptible right of surface use in the nature of a servitude in favor of the Department of Natural Resources, including its Offices and Commissions, for the sole purpose of implementing, constructing, servicing and maintaining approved coastal zone management and/or restoration projects. Utilization of any and all rights derived under this lease by the mineral lessee, its agents, successors or assigns, shall not interfere with nor hinder the reasonable surface use by the Department of Natural Resources, its Offices or Commissions, as herein above reserved.

Applicant: Robert A. Schroeder, Inc.

Bidder	Cash Payment	Price/ Acre	Rental	Oil	Gas	Other



BLOCK BS0014

BLOCK BS0013

BRETON  
SOUND  
AREA

PLAQUEMINES PARISH

BLOCK BS0019

BLOCK BS0020

S.L. 17481

S.L. 17482

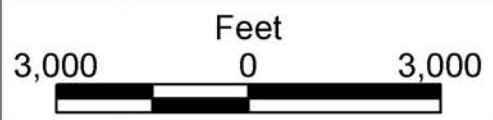
P.O.B.  
X=2,679,600.00  
Y=337,080.00

S.L. 1997

S.L. 2000

BLOCK BS0030

BLOCK BS0029



**TRACT 35727 - Portion of Block 17, Breton Sound Area, Plaquemines Parish, Louisiana**

All of the lands now or formerly constituting the beds and bottoms of all water bodies of every nature and description the title of which vests in the State of Louisiana, together with all islands arising therein and other lands formed by accretion or by reliction, where allowed by law, excepting tax adjudicated lands, and not presently under mineral lease on October 8, 2003, situated in Plaquemines Parish, Louisiana, and more particularly described as follows: Beginning at a point having Coordinates of X = 2,635,350.00 and Y = 337,080.00, said point being the Southwest corner of Block 17, Breton Sound Area; thence North 7,375.00 feet on and along the West line of said Block 17, Breton Sound Area, to a point having Coordinates of X = 2,635,350.00 and Y = 344,455.00; thence East 14,750.00 feet to a point having Coordinates of X = 2,650,100.00 and Y = 344,455.00, said point being on the East line of said Block 17, Breton Sound Area; thence South 7,375.00 feet on and along said East line of said Block 17, Breton Sound Area, to a point having Coordinates of X = 2,650,100.00 and Y = 337,080.00, said point being the Southeast corner of said Block 17, Breton Sound Area; thence West 14,750.00 feet on and along the South line of said Block 17, Breton Sound Area, to the point of beginning, containing approximately **2,497.27 acres**, all as more particularly outlined on a plat on file in the Office of Mineral Resources, Department of Natural Resources. All bearings, distances and coordinates are based on Louisiana Coordinate System of 1927, (North or South Zone), where applicable.

NOTE: The above description of the Tract nominated for lease has been provided and corrected, where required, exclusively by the nomination party. Any mineral lease selected from this Tract and awarded by the Louisiana State Mineral Board shall be without warranty of any kind, either express, implied, or statutory, including, but not limited to, the implied warranties of merchantability and fitness for a particular purpose. Should the mineral lease awarded by the Louisiana State Mineral Board be subsequently modified, cancelled or abrogated due to the existence of conflicting leases, operating agreements, private claims or other future obligations or conditions which may affect all or any portion of the leased Tract, it shall not relieve the Lessee of the obligation to pay any bonus due thereon to the Louisiana State Mineral Board, nor shall the Louisiana State Mineral Board be obligated to refund any consideration paid by the Lessor prior to such modification, cancellation, or abrogation, including, but not limited to, bonuses, rentals and royalties.

NOTE: The State of Louisiana does hereby reserve, and this lease shall be subject to, the imprescriptible right of surface use in the nature of a servitude in favor of the Department of Natural Resources, including its Offices and Commissions, for the sole purpose of implementing, constructing, servicing and maintaining approved coastal zone management and/or restoration projects. Utilization of any and all rights derived under this lease by the mineral lessee, its agents, successors or assigns, shall not interfere with nor hinder the reasonable surface use by the

Department of Natural Resources, its Offices or Commissions, as herein above reserved.

NOTE: It appears, according to our records, that a portion of this Tract is located within the restrictive safety fairway area as set out by the Corps of Engineers, U.S. Army and/or the restrictive anchorage area as set out by the U.S. Coast Guard.

Applicant: Robert A. Schroeder, Inc.

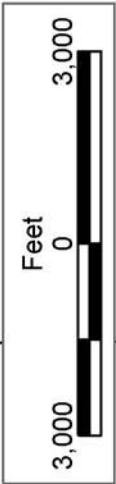
Bidder	Cash Payment	Price/ Acre	Rental	Oil	Gas	Other



BLOCK BS0018

BRETON  
SOUND  
AREA

BLOCK BS0031



BLOCK BS0017

PLAQUEMINES PARISH

BLOCK BS0032

S.L. 1227

S.L. 17301

P.O.B.  
X=2,635,350.00  
Y=337,080.00

S.L. 4708

BLOCK MP0016

MAIN PASS  
AREA, REVISED

BLOCK MP0021

S.L. 17622



**TRACT 35728 - Portion of Block 18, Breton Sound Area, Plaquemines Parish, Louisiana**

All of the lands now or formerly constituting the beds and bottoms of all water bodies of every nature and description the title of which vests in the State of Louisiana, together with all islands arising therein and other lands formed by accretion or by reliction, where allowed by law, excepting tax adjudicated lands, and not presently under mineral lease on October 8, 2003, situated in Plaquemines Parish, Louisiana, and more particularly described as follows: Beginning at a point having Coordinates of X = 2,650,100.00 and Y = 337,080.00, said point being the Southwest corner of Block 18; thence North 7,375.00 feet on and along the West line of said Block 18, to a point having Coordinates of X = 2,650,100.00 and Y = 344,455.00; thence East 8,075.55 feet to a point having Coordinates of X = 2,658,175.55 and Y = 344,455.00, said point being on the Western boundary of State Lease No. 16543, as amended; thence on and along the Western and Southern boundaries of said State Lease No. 16543, the following courses and distances, to wit: South 07 degrees 45 minutes 26 seconds West 285.61 feet to a point having Coordinates of X = 2,658,137.00 and Y = 344,172.00; South 18 degrees 20 minutes 59 seconds East 212.82 feet to a point having Coordinates of X = 2,658,204.00 and Y = 343,970.00; South 55 degrees 35 minutes 50 seconds East 111.50 feet to a point having Coordinates of X = 2,658,296.00 and Y = 343,907.00; South 84 degrees 07 minutes 57 seconds East 254.33 feet to a point having Coordinates of X = 2,658,549.00 and Y = 343,881.00; North 80 degrees 08 minutes 03 seconds East 560.29 feet to a point having Coordinates of X = 2,659,101.00 and Y = 343,977.00; North 70 degrees 40 minutes 12 seconds East 404.82 feet to a point having Coordinates of X = 2,659,483.00 and Y = 344,111.00; North 74 degrees 52 minutes 07 seconds East 406.08 feet to a point having Coordinates of X = 2,659,875.00 and Y = 344,217.00; North 79 degrees 45 minutes 05 seconds East 455.26 feet to a point having Coordinates of X = 2,660,323.00 and Y = 344,298.00; North 72 degrees 50 minutes 17 seconds East 284.68 feet to a point having Coordinates of X = 2,660,595.00 and Y = 344,382.00; North 62 degrees 09 minutes 57 seconds East 141.35 feet to a point having Coordinates of X = 2,660,720.00 and Y = 344,448.00; and North 52 degrees 32 minutes 36 seconds East 11.51 feet to a point having Coordinates of X = 2,660,729.14 and Y = 344,455.00; thence East 1,620.86 feet to a point having Coordinates of X = 2,662,350.00 and Y = 344,455.00, said point being on the Western boundary of State Lease No. 16658; thence on and along said Western boundary of said State Lease No. 16658 the following courses and distances, to wit: South 3,950.68 feet to a point having Coordinates of X = 2,662,350.00 and Y = 340,504.32; South 48 degrees 29 minutes 13 seconds West 3,205.11 feet to a point having Coordinates of X = 2,659,950.00 and Y = 338,380.00, and; South 1,300.00 feet to a point having Coordinates of X = 2,659,950.00 and Y = 337,080.00, said point being on the South line of said Block 18; thence West 9,850.00 feet on and along said South line of said Block 18, to the point of beginning, containing approximately **1,923.29 acres**, all as more particularly outlined on a plat on file in the Office of Mineral Resources, Department of Natural Resources. All bearings, distances and

coordinates are based on Louisiana Coordinate System of 1927, (North or South Zone), where applicable.

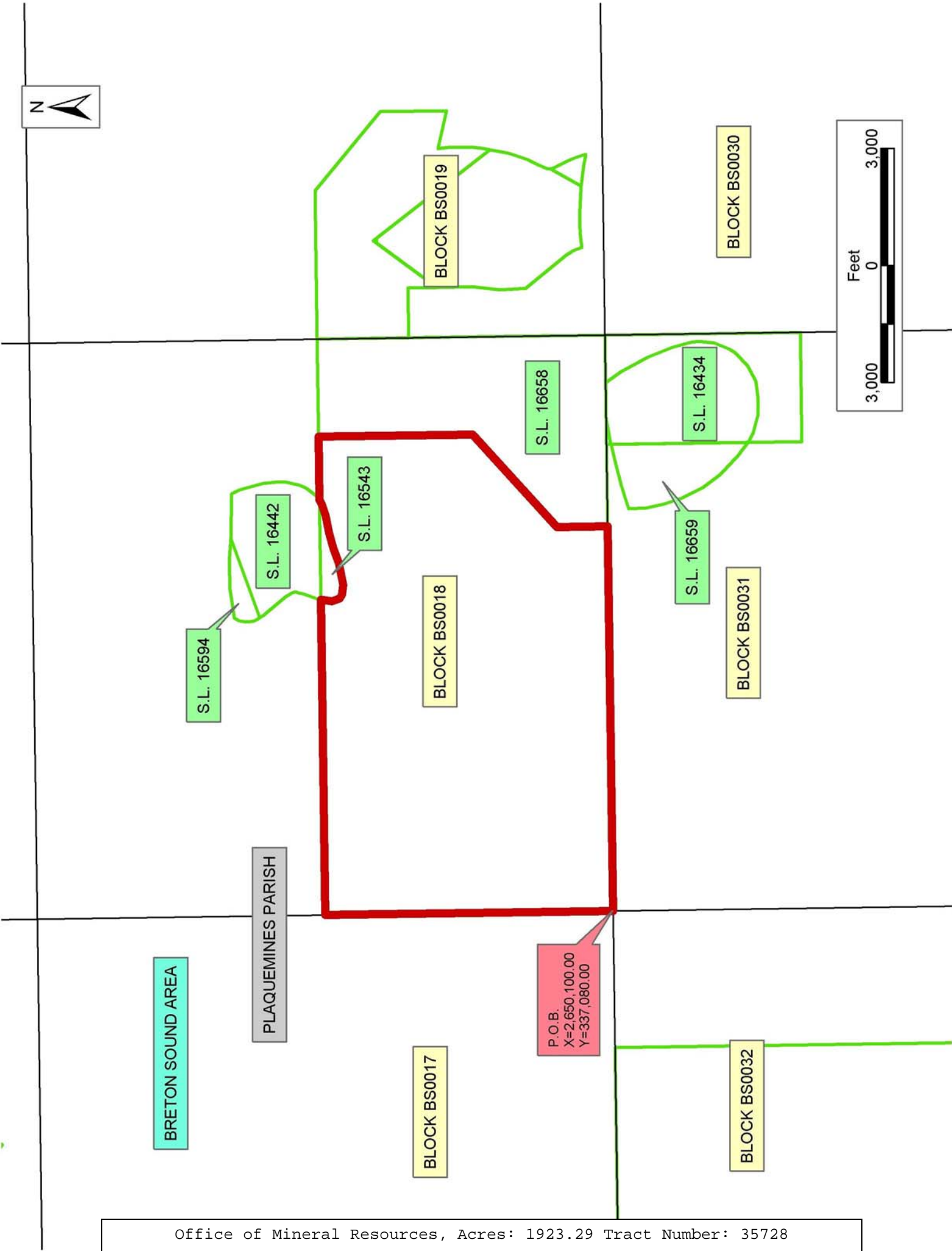
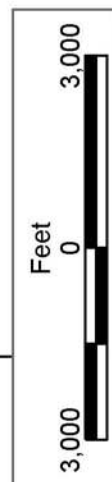
NOTE: The above description of the Tract nominated for lease has been provided and corrected, where required, exclusively by the nomination party. Any mineral lease selected from this Tract and awarded by the Louisiana State Mineral Board shall be without warranty of any kind, either express, implied, or statutory, including, but not limited to, the implied warranties of merchantability and fitness for a particular purpose. Should the mineral lease awarded by the Louisiana State Mineral Board be subsequently modified, cancelled or abrogated due to the existence of conflicting leases, operating agreements, private claims or other future obligations or conditions which may affect all or any portion of the leased Tract, it shall not relieve the Lessee of the obligation to pay any bonus due thereon to the Louisiana State Mineral Board, nor shall the Louisiana State Mineral Board be obligated to refund any consideration paid by the Lessor prior to such modification, cancellation, or abrogation, including, but not limited to, bonuses, rentals and royalties.

NOTE: The State of Louisiana does hereby reserve, and this lease shall be subject to, the imprescriptible right of surface use in the nature of a servitude in favor of the Department of Natural Resources, including its Offices and Commissions, for the sole purpose of implementing, constructing, servicing and maintaining approved coastal zone management and/or restoration projects. Utilization of any and all rights derived under this lease by the mineral lessee, its agents, successors or assigns, shall not interfere with nor hinder the reasonable surface use by the Department of Natural Resources, its Offices or Commissions, as herein above reserved.

NOTE: It appears, according to our records, that a portion of this Tract is located within the restrictive safety fairway area as set out by the Corps of Engineers, U.S. Army and/or the restrictive anchorage area as set out by the U.S. Coast Guard.

Applicant: Robert A. Schroeder, Inc.

Bidder	Cash Payment	Price/ Acre	Rental	Oil	Gas	Other



**TRACT 35729 - Portion of Block 19, Breton Sound Area, Plaquemines Parish, Louisiana**

All of the lands now or formerly constituting the beds and bottoms of all water bodies of every nature and description the title of which vests in the State of Louisiana, together with all islands arising therein and other lands formed by accretion or by reliction, where allowed by law, excepting tax adjudicated lands, and not presently under mineral lease on October 8, 2003, situated in Plaquemines Parish, Louisiana, and more particularly described as follows: Beginning at a point having Coordinates of X = 2,664,850.00 and Y = 337,080.00, said point being the Southwest corner of Block 19, Breton Sound Area; thence North 5,030.00 feet on and along the West line of said Block 19, to a point having Coordinates of X = 2,664,850.00 and Y = 342,110.00, said point being on the Southern boundary of State Lease No. 16610, as amended; thence on and along the Southern, Western, Eastern and Northern boundaries of State Lease No. 16610 and State Lease No. 16443, as amended, the following courses and distances, to wit: East 1,278.88 feet to a point having Coordinates of X = 2,666,128.88 and Y = 342,110.00; South 741.888 feet to a point having Coordinates of X = 2,666,128.88 and Y = 341,368.12; South 915.42 feet to a point having Coordinates of X = 2,666,128.88 and Y = 340,452.70; South 06 degrees 53 minutes 21 seconds West 704.12 feet to a point having Coordinates of X = 2,666,044.42 and Y = 339,753.66; South 02 degrees 27 minutes 12 seconds East 659.24 feet to a point having Coordinates of X = 2,666,072.64 and Y = 339,095.02; South 38 degrees 35 minutes 54 seconds East 1,354.22 feet to a point having Coordinates of X = 2,666,917.48 and Y = 338,036.64; South 31 degrees 45 minutes 38 seconds East 121.25 feet to a point having Coordinates of X = 2,666,981.30 and Y = 337,933.55; South 28 degrees 35 minutes 41 seconds East 49.75 feet to a point having Coordinates of X = 2,667,005.11 and Y = 337,889.87; South 22 degrees 36 minutes 27 seconds East 99.79 feet to a point having Coordinates of X = 2,667,043.47 and Y = 337,797.75; South 20 degrees 44 minutes 54 seconds East 115.48 feet to a point having Coordinates of X = 2,667,084.38 and Y = 337,689.76; South 21 degrees 15 minutes 32 seconds East 52.95 feet to a point having Coordinates of X = 2,667,103.58 and Y = 337,640.41; North 82 degrees 36 minutes 08 seconds East 154.01 feet to a point having Coordinates of X = 2,667,256.31 and Y = 337,660.24; North 84 degrees 17 minutes 19 seconds East 159.47 feet to a point having Coordinates of X = 2,667,414.99 and Y = 337,676.11; North 87 degrees 18 minutes 25 seconds East 168.78 feet to a point having Coordinates of X = 2,667,583.58 and Y = 337,684.04; North 89 degrees 37 minutes 10 seconds East 299.52 feet to a point having Coordinates of X = 2,667,883.09 and Y = 337,686.03; South 86 degrees 56 minutes 01 seconds East 222.47 feet to a point having Coordinates of X = 2,668,105.24 and Y = 337,674.13; South 87 degrees 17 minutes 55 seconds East 210.48 feet to a point having Coordinates of X = 2,668,315.49 and Y = 337,664.21; South 86 degrees 36 minutes 02 seconds East 200.68 feet to a point having Coordinates of X = 2,668,515.82 and Y = 337,652.31; and South 82 degrees 37 minutes 32 seconds East 154.22 feet to a point having Coordinates of X = 2,668,668.76 and Y = 337,632.52; South 82 degrees 37 minutes 32 seconds East 245.00 feet to a point having

Coordinates of X = 2,668,911.73 and Y = 337,601.07; South 82 degrees 15 minutes 01 seconds East 250.22 feet to a point having Coordinates of X = 2,669,159.66 and Y = 337,567.33; South 79 degrees 19 minutes 26 seconds East 267.85 feet to a point having Coordinates of X = 2,669,422.87 and Y = 337,517.71; South 79 degrees 51 minutes 47 seconds East 56.42 feet to a point having Coordinates of X = 2,669,478.41 and Y = 337,507.78; North 12 degrees 00 minutes 01 seconds West 95.37 feet to a point having Coordinates of X = 2,669,458.58 and Y = 337,601.07; North 17 degrees 48 minutes 40 seconds West 116.75 feet to a point having Coordinates of X = 2,669,422.87 and Y = 337,712.22; North 21 degrees 04 minutes 52 seconds West 148.91 feet to a point having Coordinates of X = 2,669,369.31 and Y = 337,851.16; North 23 degrees 01 minutes 23 seconds West 187.62 feet to a point having Coordinates of X = 2,669,295.93 and Y = 338,023.84; North 25 degrees 14 minutes 37 seconds West 260.46 feet to a point having Coordinates of X = 2,669,184.85 and Y = 338,259.43; North 23 degrees 56 minutes 51 seconds West 97.73 feet to a point having Coordinates of X = 2,669,145.18 and Y = 338,348.75; North 13 degrees 39 minutes 40 seconds West 75.58 feet to a point having Coordinates of X = 2,669,127.33 and Y = 338,422.19; North 02 degrees 29 minutes 01 seconds East 5.61 feet to a point having Coordinates of X = 2,669,127.57 and Y = 338,427.79; North 02 degrees 29 minutes 01 seconds East 40.09 feet to a point having Coordinates of X = 2,669,129.31 and Y = 338,467.84; North 11 degrees 53 minutes 25 seconds East 38.54 feet to a point having Coordinates of X = 2,669,137.25 and Y = 338,505.55; North 23 degrees 22 minutes 05 seconds East 235.28 feet to a point having Coordinates of X = 2,669,230.57 and Y = 338,721.53; North 27 degrees 32 minutes 12 seconds East 310.93 feet to a point having Coordinates of X = 2,669,374.32 and Y = 338,997.24; North 18 degrees 46 minutes 56 seconds East 503.86 feet to a point having Coordinates of X = 2,669,536.55 and Y = 339,474.27; North 11 degrees 53 minutes 58 seconds East 495.32 feet to a point having Coordinates of X = 2,669,638.68 and Y = 339,958.95; North 11 degrees 53 minutes 58 seconds East 140.68 feet to a point having Coordinates of X = 2,669,667.69 and Y = 340,096.60; North 06 degrees 34 minutes 02 seconds East 354.64 feet to a point having Coordinates of X = 2,669,708.25 and Y = 340,448.91; North 00 degrees 44 minutes 07 seconds East 487.86 feet to a point having Coordinates of X = 2,669,714.51 and Y = 340,936.73; North 05 degrees 42 minutes 56 seconds West 357.95 feet to a point having Coordinates of X = 2,669,678.86 and Y = 341,292.90; South 76 degrees 14 minutes 07 seconds East 999.85 feet to a point having Coordinates of X = 2,670,650.00 and Y = 341,055.00; North 1,700.00 feet to a point having Coordinates of X = 2,670,650.00 and Y = 342,755.00; and North 49 degrees 38 minutes 08 seconds West 2,624.88 feet to a point having Coordinates of X = 2,668,650.00 and Y = 344,455.00; thence East 8,750.00 feet to a point having Coordinates of X = 2,677,400.00 and Y = 344,455.00, said point being on the Western boundary of State Lease No. 17481; thence on and along the Western, Southern and Eastern boundaries of State Lease No. 17481 the following courses and distances, to wit: South 865.00 feet to a point having Coordinates of X = 2,677,400.00 and Y = 343,590.00; West 200.00 feet to a point having Coordinates of X = 2,677,200.00 and Y =

343,590.00; South 2,610.00 feet to a point having Coordinates of X = 2,677,200.00 and Y = 340,980.00; East 700.00 feet to a point having Coordinates of X = 2,677,900.00 and Y = 340,980.00; North 490.00 feet to a point having Coordinates of X = 2,677,900.00 and Y = 341,470.00; and East 1,700.00 feet to a point having Coordinates of X = 2,679,600.00 and Y = 341,470.00, said point being on the East line of said Block 19; thence South 4,390.00 feet on and along said East line of said Block 19, to a point having Coordinates of X = 2,679,600.00 and Y = 337,080.00, said point being the Southeast corner of said Block 19; thence West 14,750.00 feet on and along the South line of said Block 19, to the point of beginning, containing approximately **1,701.57 acres**, all as more particularly outlined on a plat on file in the Office of Mineral Resources, Department of Natural Resources. All bearings, distances and coordinates are based on Louisiana Coordinate System of 1927, (North or South Zone), where applicable.

NOTE: The above description of the Tract nominated for lease has been provided and corrected, where required, exclusively by the nomination party. Any mineral lease selected from this Tract and awarded by the Louisiana State Mineral Board shall be without warranty of any kind, either express, implied, or statutory, including, but not limited to, the implied warranties of merchantability and fitness for a particular purpose. Should the mineral lease awarded by the Louisiana State Mineral Board be subsequently modified, cancelled or abrogated due to the existence of conflicting leases, operating agreements, private claims or other future obligations or conditions which may affect all or any portion of the leased Tract, it shall not relieve the Lessee of the obligation to pay any bonus due thereon to the Louisiana State Mineral Board, nor shall the Louisiana State Mineral Board be obligated to refund any consideration paid by the Lessor prior to such modification, cancellation, or abrogation, including, but not limited to, bonuses, rentals and royalties.

NOTE: The State of Louisiana does hereby reserve, and this lease shall be subject to, the imprescriptible right of surface use in the nature of a servitude in favor of the Department of Natural Resources, including its Offices and Commissions, for the sole purpose of implementing, constructing, servicing and maintaining approved coastal zone management and/or restoration projects. Utilization of any and all rights derived under this lease by the mineral lessee, its agents, successors or assigns, shall not interfere with nor hinder the reasonable surface use by the Department of Natural Resources, its Offices or Commissions, as herein above reserved.

NOTE: It appears, according to our records, that a portion of this Tract is located within the restrictive safety fairway area as set out by the Corps of Engineers, U.S. Army and/or the restrictive anchorage area as set out by the U.S. Coast Guard.

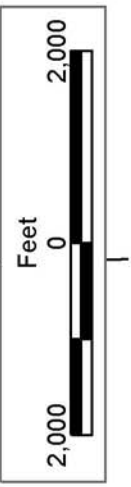
Applicant: Robert A. Schroeder, Inc.

Bidder	Cash Payment	Price/ Acre	Rental	Oil	Gas	Other



BLOCK BS0020

BLOCK BS0029



BLOCK BS0019

BRETON SOUND AREA

PLAQUEMINES PARISH

BLOCK BS0030

BLOCK BS0018

BLOCK BS0031

S.L. 17482

S.L. 17481

S.L. 16610

S.L. 16443

S.L. 16610

S.L. 16658

S.L. 16434

P.O.B.  
X=2,664,850.00  
Y=337,080.00



**TRACT 35730 - St. Mary Parish, Louisiana**

All of the lands now or formerly constituting the beds and bottoms of all water bodies of every nature and description the title of which vests in the State of Louisiana, together with all islands arising therein and other lands formed by accretion or by reliction, where allowed by law, excepting tax adjudicated lands, and not presently under mineral lease on October 8, 2003, situated in St. Mary Parish, Louisiana, and more particularly described as follows: Beginning at a point, having Coordinates of X = 1,915,203.92 and Y = 346,995.99, said point also being a corner on State Lease No. 340, as amended; thence along the boundary of said State Lease No. 340, South 27 degrees 53 minutes 50 seconds East 7,230.22 feet to a point having Coordinates of X = 1,918,586.84 and Y = 340,606.00; thence West approximately 5,181 feet to a point on the East line of State Lease No. 16381; thence Northerly along the East line of said State Lease No. 16381 approximately 1,894 feet to its Northeast corner, having a Coordinate of Y = 342,500.00; thence Northerly on a straight line approximately 1,600 feet to the Southeast corner of State Lease No. 16586, having a Coordinate of Y = 344,100.00; thence Northerly approximately 2,899 feet along the East line of said State Lease No. 16586 to a point of intersection with a line that is bearing North 89 degrees 53 minutes 51 seconds West from the point of beginning; thence South 89 degrees 53 minutes 51 seconds East approximately 1,786 feet to the point of beginning, **LESS AND EXCEPT**, those portions, if any, of State Lease No. 16381, State Lease No. 16586 and State Lease No. 340, as amended, that may lie within the above described tract, containing approximately **511 acres**, all as more particularly outlined on a plat on file in the Office of Mineral Resources, Department of Natural Resources. All bearings, distances and coordinates are based on Louisiana Coordinate System of 1927, (North or South Zone), where applicable.

NOTE: The above description of the Tract nominated for lease has been provided and corrected, where required, exclusively by the nomination party. Any mineral lease selected from this Tract and awarded by the Louisiana State Mineral Board shall be without warranty of any kind, either express, implied, or statutory, including, but not limited to, the implied warranties of merchantability and fitness for a particular purpose. Should the mineral lease awarded by the Louisiana State Mineral Board be subsequently modified, cancelled or abrogated due to the existence of conflicting leases, operating agreements, private claims or other future obligations or conditions which may affect all or any portion of the leased Tract, it shall not relieve the Lessee of the obligation to pay any bonus due thereon to the Louisiana State Mineral Board, nor shall the Louisiana State Mineral Board be obligated to refund any consideration paid by the Lessor prior to such modification, cancellation, or abrogation, including, but not limited to, bonuses, rentals and royalties.

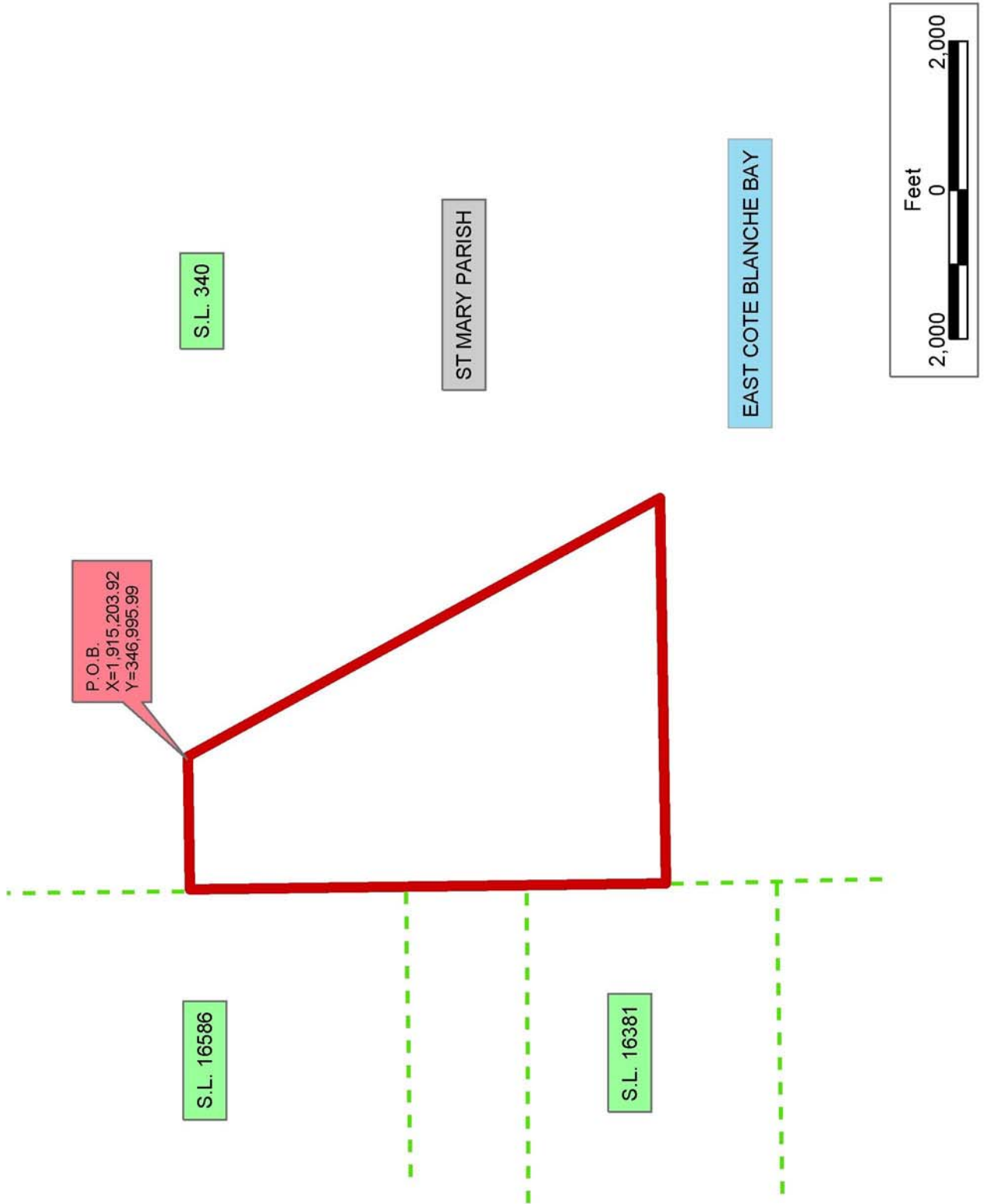
NOTE: The State of Louisiana does hereby reserve, and this lease shall be subject to, the imprescriptible right of surface use in the nature of a servitude in favor of the Department of Natural Resources, including its

Offices and Commissions, for the sole purpose of implementing, constructing, servicing and maintaining approved coastal zone management and/or restoration projects. Utilization of any and all rights derived under this lease by the mineral lessee, its agents, successors or assigns, shall not interfere with nor hinder the reasonable surface use by the Department of Natural Resources, its Offices or Commissions, as herein above reserved.

NOTE: The Department of Wildlife and Fisheries has designated certain areas in the coastal waters of the State of Louisiana as Oyster Seed Bed Areas. The exact location of those Seed Bed Areas must be obtained from the Department of Wildlife and Fisheries and any work done under a mineral lease from the State of Louisiana may necessarily be conducted in conformity with the rules and regulations promulgated by the said Department of Wildlife and Fisheries for Oyster Seed Bed Areas.

Applicant: Mineral Services, Inc.

Bidder	Cash Payment	Price/ Acre	Rental	Oil	Gas	Other



**TRACT 35731 - St. Mary Parish, Louisiana**

All of the lands now or formerly constituting the beds and bottoms of all water bodies of every nature and description the title of which vests in the State of Louisiana, together with all islands arising therein and other lands formed by accretion or by reliction, where allowed by law, excepting tax adjudicated lands, and not presently under mineral lease on October 8, 2003, situated in St. Mary Parish, Louisiana, and more particularly described as follows: Beginning at a point having Coordinates of X = 1,909,280.00 and Y = 344,100.00, said point also being the Southwest corner of State Lease No. 16586; thence East approximately 4,130 feet along the Southern boundary of said State Lease No. 16586 to its Southeast corner having a Coordinate of Y = 344,100.00; thence Southerly approximately 1,600 feet on a straight line to the Northeast corner of State Lease No. 16381; thence West approximately 4,130 feet along the North line of said State Lease No. 16381 to a point having Coordinates of X = 1,909,280.00 and Y = 342,500.00; thence North 1,600.00 feet to the point of beginning, **LESS AND EXCEPT** that portion, if any, of State Lease No. 16381, State Lease No. 16586 and State Lease No. 340, as amended, that may lie within the above described tract, containing approximately **152 acres**, all as more particularly outlined on a plat on file in the Office of Mineral Resources, Department of Natural Resources. All bearings, distances and coordinates are based on Louisiana Coordinate System of 1927, (North or South Zone), where applicable.

NOTE: The above description of the Tract nominated for lease has been provided and corrected, where required, exclusively by the nomination party. Any mineral lease selected from this Tract and awarded by the Louisiana State Mineral Board shall be without warranty of any kind, either express, implied, or statutory, including, but not limited to, the implied warranties of merchantability and fitness for a particular purpose. Should the mineral lease awarded by the Louisiana State Mineral Board be subsequently modified, cancelled or abrogated due to the existence of conflicting leases, operating agreements, private claims or other future obligations or conditions which may affect all or any portion of the leased Tract, it shall not relieve the Lessee of the obligation to pay any bonus due thereon to the Louisiana State Mineral Board, nor shall the Louisiana State Mineral Board be obligated to refund any consideration paid by the Lessor prior to such modification, cancellation, or abrogation, including, but not limited to, bonuses, rentals and royalties.

NOTE: The State of Louisiana does hereby reserve, and this lease shall be subject to, the imprescriptible right of surface use in the nature of a servitude in favor of the Department of Natural Resources, including its Offices and Commissions, for the sole purpose of implementing, constructing, servicing and maintaining approved coastal zone management and/or restoration projects. Utilization of any and all rights derived under this lease by the mineral lessee, its agents, successors or assigns, shall not interfere with nor hinder the reasonable surface use by the

Department of Natural Resources, its Offices or Commissions, as herein above reserved.

NOTE: The Department of Wildlife and Fisheries has designated certain areas in the coastal waters of the State of Louisiana as Oyster Seed Bed Areas. The exact location of those Seed Bed Areas must be obtained from the Department of Wildlife and Fisheries and any work done under a mineral lease from the State of Louisiana may necessarily be conducted in conformity with the rules and regulations promulgated by the said Department of Wildlife and Fisheries for Oyster Seed Bed Areas.

Applicant: Mineral Services, Inc.

Bidder	Cash Payment	Price/ Acre	Rental	Oil	Gas	Other



EAST COTE BLANCHE BAY

S.L. 16586

ST MARY PARISH

S.L. 16381

P.O.B.  
X=1,909,280.00  
Y=344,100.00

