

TRACT 35703 - Portion of Block 73, Chandeleur Sound Area, and Block 1, Main Pass Area, Revised, St. Bernard Parish, Louisiana

All of the lands now or formerly constituting the beds and bottoms of all water bodies of every nature and description the title of which vests in the State of Louisiana, together with all islands arising therein and other lands formed by accretion or by reliction, where allowed by law, excepting tax adjudicated lands, and not presently under mineral lease on October 8, 2003, situated in St. Bernard Parish, Louisiana, and more particularly described as follows: Beginning at a point having Coordinates of X = 2,570,560.77 and Y = 386,324.06; thence North 86 degrees 56 minutes 56 seconds East approximately 10,489 feet to a point on the Western boundary line of State Lease No. 4310, as amended; thence Southeasterly along the boundary of said State Lease No. 4310 to the point of intersection with a line having a bearing of South 02 degrees 02 minutes 12 seconds East; thence South 02 degrees 02 minutes 12 seconds East approximately 3,006 feet to a point on the North boundary line of State Lease No. 17109, as amended, having Coordinates of X = 2,581,269.67 and Y = 383,675.35; thence along the boundary of said State Lease No. 17109 the following courses: South 81 degrees 46 minutes 12 seconds West 75.31 feet and South 76 degrees 24 minutes 57 seconds East 489.45 feet to the most Southerly corner of said State Lease No. 17109, also being a point on the Western boundary line of State Lease No. 15959, as amended, having Coordinates of X = 2,581,670.89 and Y = 383,549.61; thence along the boundary of said State Lease No. 15959 the following courses: South 76 degrees 24 minutes 57 seconds East 501.55 feet, South 73 degrees 26 minutes 52 seconds East 299.06 feet, South 61 degrees 47 minutes 44 seconds East 108.65 feet, South 37 degrees 16 minutes 32 seconds East 105.11 feet, South 19 degrees 12 minutes 46 seconds East 116.02 feet, South 08 degrees 17 minutes 28 seconds East 100.14 feet, South 08 degrees 34 minutes 50 seconds West 212.80 feet, South 15 degrees 31 minutes 20 seconds West 1,012.40 feet and South 11 degrees 08 minutes 02 seconds West 496.42 feet to a point on the Western boundary line of said State Lease No. 15959, also being a point on the North boundary line of State Lease No. 17619 having Coordinates of X = 2,582,258.57 and Y = 381,330.00; thence along the boundary of said State Lease No. 17619 the following courses: West 1,608.57 feet and South 614.30 feet to a point on the West boundary line of said State Lease No. 17619 having Coordinates of X = 2,580,650.00 and Y = 380,715.70; thence South 89 degrees 21 minutes 31 seconds West 10,022.13 feet to a point having Coordinates of X = 2,570,628.50 and Y = 380,603.53; thence North 00 degrees 40 minutes 42 seconds West 5,720.93 feet to the point of beginning, containing approximately **1,195 acres**, all as more particularly outlined on a plat on file in the Office of Mineral Resources, Department of Natural Resources. All bearings, distances and coordinates are based on Louisiana Coordinate System of 1927, (North or South Zone), where applicable.

NOTE: The above description of the Tract nominated for lease has been provided and corrected, where required, exclusively by the nomination party. Any mineral lease selected from this Tract and awarded by the

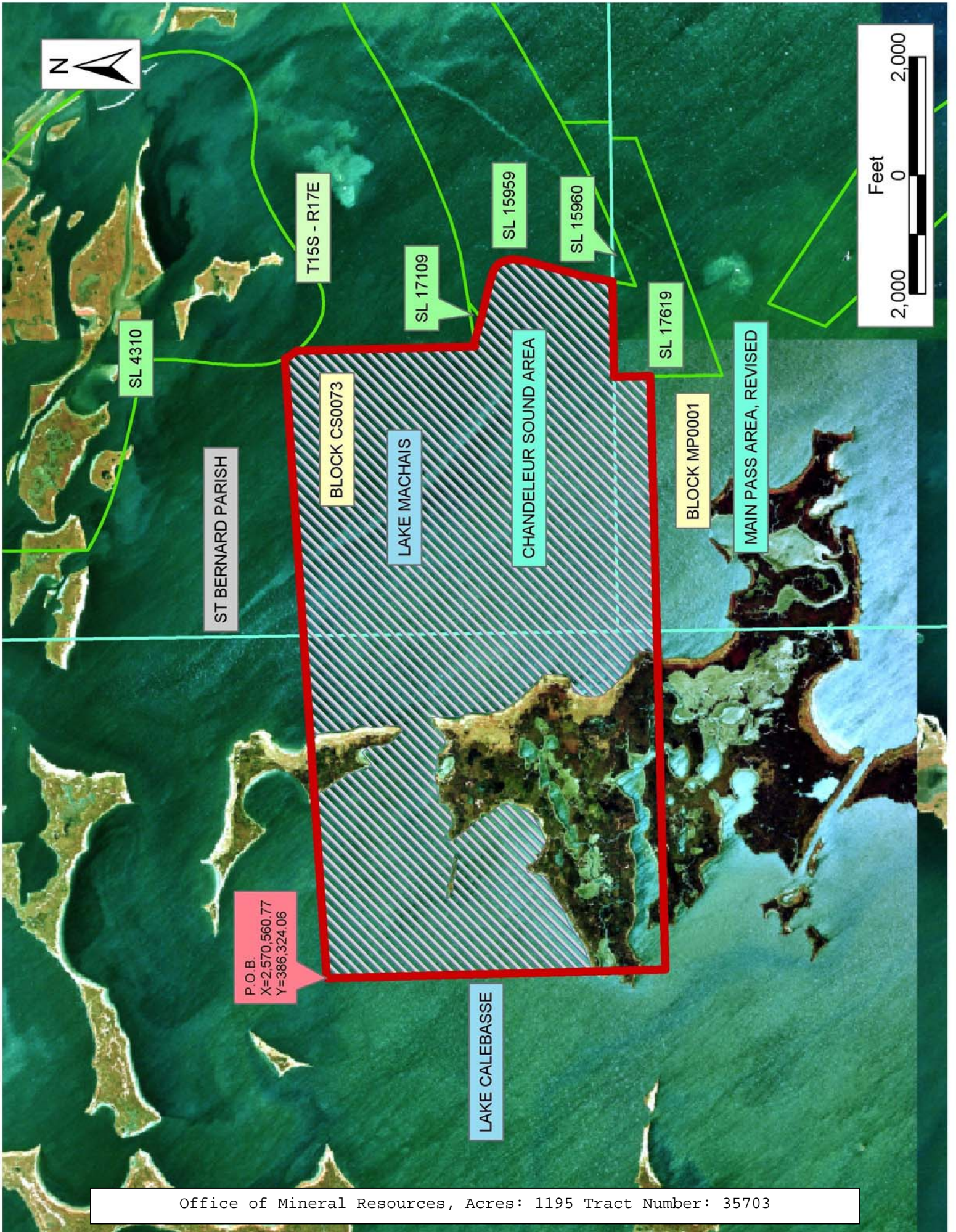
Louisiana State Mineral Board shall be without warranty of any kind, either express, implied, or statutory, including, but not limited to, the implied warranties of merchantability and fitness for a particular purpose. Should the mineral lease awarded by the Louisiana State Mineral Board be subsequently modified, cancelled or abrogated due to the existence of conflicting leases, operating agreements, private claims or other future obligations or conditions which may affect all or any portion of the leased Tract, it shall not relieve the Lessee of the obligation to pay any bonus due thereon to the Louisiana State Mineral Board, nor shall the Louisiana State Mineral Board be obligated to refund any consideration paid by the Lessor prior to such modification, cancellation, or abrogation, including, but not limited to, bonuses, rentals and royalties.

NOTE: The State of Louisiana does hereby reserve, and this lease shall be subject to, the imprescriptible right of surface use in the nature of a servitude in favor of the Department of Natural Resources, including its Offices and Commissions, for the sole purpose of implementing, constructing, servicing and maintaining approved coastal zone management and/or restoration projects. Utilization of any and all rights derived under this lease by the mineral lessee, its agents, successors or assigns, shall not interfere with nor hinder the reasonable surface use by the Department of Natural Resources, its Offices or Commissions, as herein above reserved.

NOTE: The Department of Wildlife and Fisheries has designated certain areas in the coastal waters of the State of Louisiana as Oyster Seed Bed Areas. The exact location of those Seed Bed Areas must be obtained from the Department of Wildlife and Fisheries and any work done under a mineral lease from the State of Louisiana may necessarily be conducted in conformity with the rules and regulations promulgated by the said Department of Wildlife and Fisheries for Oyster Seed Bed Areas.

Applicant: Harold J. Anderson, Inc.

Bidder	Cash Payment	Price/Acre	Rental	Oil	Gas	Other



TRACT 35704 - Portion of Blocks 72, and 73, Chandeleur Sound Area, Blocks 1, and 2, Main Pass Area, Revised, St. Bernard Parish, Louisiana

All of the lands now or formerly constituting the beds and bottoms of all water bodies of every nature and description the title of which vests in the State of Louisiana, together with all islands arising therein and other lands formed by accretion or by reliction, where allowed by law, excepting tax adjudicated lands, and not presently under mineral lease on October 8, 2003, situated in St. Bernard Parish, Louisiana, and more particularly described as follows: Beginning at a point having Coordinates of X = 2,592,080.88 and Y = 386,925.38; thence South 01 degrees 16 minutes 23 seconds West 7,215.21 feet to a point having Coordinates of X = 2,591,920.59 and Y = 379,711.95; thence North 89 degrees 50 minutes 16 seconds West 4,710.05 feet to a point having Coordinates of X = 2,587,210.56 and Y = 379,725.28; thence North 80 degrees 17 minutes 27 seconds West 4,023.08 feet to a point on the Eastern boundary line of State Lease No. 17619 having Coordinates of X = 2,583,245.11 and Y = 380,403.77; thence along the boundary of said State Lease No. 17619 the following courses: North 70 degrees 47 minutes 56 seconds East 1,508.83 feet and North 430.00 feet to the Northeast corner of said State Lease No. 17619, also being a point on the South boundary line of State Lease No. 17618 having Coordinates of X = 2,584,670.00 and Y = 381,330.00; thence along the boundary of said State Lease No. 17618 the following courses: East 280.00 feet and North 809.39 feet to the Northeast corner of said State Lease No. 17618, also being a point on the Southern boundary line of State Lease No. 15959, as amended having Coordinates of X = 2,584,950.00 and Y = 382,139.39; thence along the boundary of said State Lease No. 15959 the following courses: North 63 degrees 47 minutes 53 seconds East 78.22 feet, North 61 degrees 26 minutes 50 seconds East 1,627.62 feet, North 58 degrees 33 minutes 03 seconds East 1,000.42 feet, North 55 degrees 38 minutes 16 seconds East 2,168.32 feet, North 49 degrees 36 minutes 10 seconds East 1,202.25 feet, North 55 degrees 39 minutes 15 seconds West 399.34 feet, North 64 degrees 45 minutes 33 seconds West 297.24 feet, North 69 degrees 26 minutes 32 seconds West 303.57 feet, North 75 degrees 50 minutes 54 seconds West 302.06 feet, North 80 degrees 45 minutes 03 seconds West 315.94 feet, North 87 degrees 36 minutes 34 seconds West 398.69 feet, South 85 degrees 30 minutes 31 seconds West 298.30 feet, South 75 degrees 30 minutes 36 seconds West 303.10 feet, South 70 degrees 54 minutes 39 seconds West 599.32 feet, South 63 degrees 37 minutes 44 seconds West 405.67 feet, South 59 degrees 21 minutes 35 seconds West 1,000.36 feet, South 63 degrees 34 minutes 54 seconds West 598.91 feet, South 65 degrees 35 minutes 56 seconds West 1,004.35 feet, South 68 degrees 49 minutes 42 seconds West 990.83 feet, South 74 degrees 53 minutes 16 seconds West 604.96 feet, South 81 degrees 43 minutes 56 seconds West 605.36 feet and South 81 degrees 46 minutes 12 seconds West 249.76 feet to a point on the North boundary line of said State Lease No. 15959, also being the Northeast corner of State Lease No. 17109, as amended having Coordinates of X = 2,581,936.36 and Y = 383,771.78; thence South 81 degrees 46 minutes 12 seconds West 673.63 feet along the North boundary line of said State Lease No. 17109 to a point having Coordinates

of X = 2,581,269.67 and Y = 383,675.35; thence North 02 degrees 02 minutes 12 seconds West approximately 3,006 feet to a point on the Southern boundary line of State Lease No. 4310, as amended; thence along the boundary of said State Lease No. 4310 the following courses: Southeasterly and Northeasterly to the point of intersection with a line having a bearing of North 89 degrees 48 minutes 29 seconds East; thence North 89 degrees 48 minutes 29 seconds East approximately 8,866 feet to the point of beginning, **LESS AND EXCEPT** any portion of State Lease No. 4310, as amended, that may fall within the above described tract, containing approximately **904 acres**, all as more particularly outlined on a plat on file in the Office of Mineral Resources, Department of Natural Resources. All bearings, distances and coordinates are based on Louisiana Coordinate System of 1927, (North or South Zone), where applicable.

NOTE: The above description of the Tract nominated for lease has been provided and corrected, where required, exclusively by the nomination party. Any mineral lease selected from this Tract and awarded by the Louisiana State Mineral Board shall be without warranty of any kind, either express, implied, or statutory, including, but not limited to, the implied warranties of merchantability and fitness for a particular purpose. Should the mineral lease awarded by the Louisiana State Mineral Board be subsequently modified, cancelled or abrogated due to the existence of conflicting leases, operating agreements, private claims or other future obligations or conditions which may affect all or any portion of the leased Tract, it shall not relieve the Lessee of the obligation to pay any bonus due thereon to the Louisiana State Mineral Board, nor shall the Louisiana State Mineral Board be obligated to refund any consideration paid by the Lessor prior to such modification, cancellation, or abrogation, including, but not limited to, bonuses, rentals and royalties.

NOTE: The State of Louisiana does hereby reserve, and this lease shall be subject to, the imprescriptible right of surface use in the nature of a servitude in favor of the Department of Natural Resources, including its Offices and Commissions, for the sole purpose of implementing, constructing, servicing and maintaining approved coastal zone management and/or restoration projects. Utilization of any and all rights derived under this lease by the mineral lessee, its agents, successors or assigns, shall not interfere with nor hinder the reasonable surface use by the Department of Natural Resources, its Offices or Commissions, as herein above reserved.

NOTE: The Department of Wildlife and Fisheries has designated certain areas in the coastal waters of the State of Louisiana as Oyster Seed Bed Areas. The exact location of those Seed Bed Areas must be obtained from the Department of Wildlife and Fisheries and any work done under a mineral lease from the State of Louisiana may necessarily be conducted in conformity with the rules and regulations promulgated by the said Department of Wildlife and Fisheries for Oyster Seed Bed Areas.

Applicant: Harold J. Anderson, Inc.

Bidder	Cash Payment	Price/Acre	Rental	Oil	Gas	Other



P.O.B.
X=2,592,080.88
Y=386,925.38

CHANDELEUR SOUND AREA

BLOCK CS0072

BLOCK MP0002



ST BERNARD PARISH

T15S - R17E

BLOCK CS0073

BLOCK MP0001

MAIN PASS AREA, REVISED

SL 4310

SL 15959

SL 17618

SL 14375

LAKE MACHIAS

SL 17109

SL 15960

SL 17619

TRACT 35705 - Jefferson, Lafourche and St. Charles Parishes, Louisiana

All of the lands now or formerly constituting the beds and bottoms of all water bodies of every nature and description the title of which vests in the State of Louisiana, together with all islands arising therein and other lands formed by accretion or by reliction, where allowed by law, excepting tax adjudicated lands, and not presently under mineral lease on October 8, 2003, situated in Jefferson, Lafourche and St. Charles Parishes, Louisiana, and more particularly described as follows: Beginning at a point having Coordinates of X = 2,355,800.00 and Y = 371,700.00; thence West 6,935.00 feet to a point having Coordinates of X = 2,348,865.00 and Y = 371,700.00; thence North 15,700.00 feet to a point having Coordinates of X = 2,348,865.00 and Y = 387,400.00; thence East 6,935.00 feet to a point having Coordinates of X = 2,355,800.00 and Y = 387,400.00; thence South 15,700.00 feet to the point of beginning, containing approximately **2,499.53 acres**, all as more particularly outlined on a plat on file in the Office of Mineral Resources, Department of Natural Resources. All bearings, distances and coordinates are based on Louisiana Coordinate System of 1927, (North or South Zone), where applicable.

NOTE: The above description of the Tract nominated for lease has been provided and corrected, where required, exclusively by the nomination party. Any mineral lease selected from this Tract and awarded by the Louisiana State Mineral Board shall be without warranty of any kind, either express, implied, or statutory, including, but not limited to, the implied warranties of merchantability and fitness for a particular purpose. Should the mineral lease awarded by the Louisiana State Mineral Board be subsequently modified, cancelled or abrogated due to the existence of conflicting leases, operating agreements, private claims or other future obligations or conditions which may affect all or any portion of the leased Tract, it shall not relieve the Lessee of the obligation to pay any bonus due thereon to the Louisiana State Mineral Board, nor shall the Louisiana State Mineral Board be obligated to refund any consideration paid by the Lessor prior to such modification, cancellation, or abrogation, including, but not limited to, bonuses, rentals and royalties.

NOTE: The State of Louisiana does hereby reserve, and this lease shall be subject to, the imprescriptible right of surface use in the nature of a servitude in favor of the Department of Natural Resources, including its Offices and Commissions, for the sole purpose of implementing, constructing, servicing and maintaining approved coastal zone management and/or restoration projects. Utilization of any and all rights derived under this lease by the mineral lessee, its agents, successors or assigns, shall not interfere with nor hinder the reasonable surface use by the Department of Natural Resources, its Offices or Commissions, as herein above reserved.

Applicant: Kare-Sue Energy, Inc.

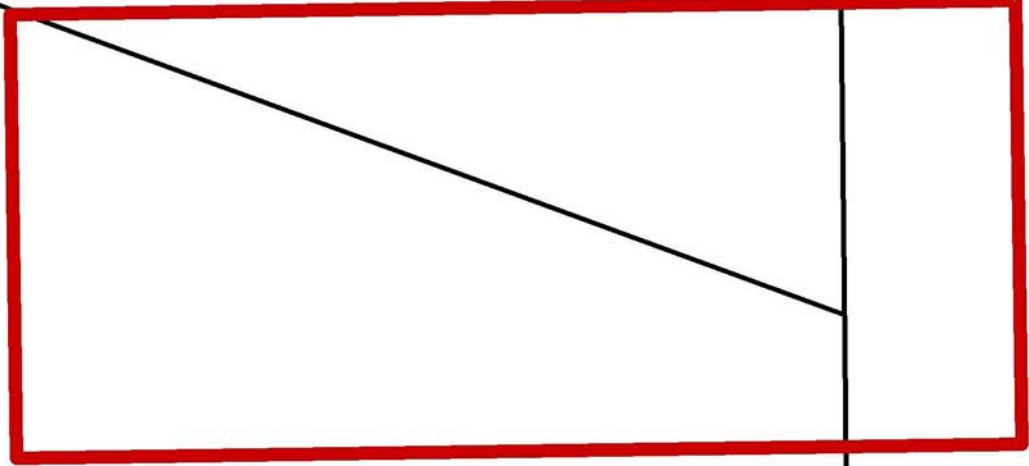
Bidder	Cash Payment	Price/Acre	Rental	Oil	Gas	Other



LAKE SALVADOR

JEFFERSON PARISH

P.O.B.
X=2,355,800.00
Y=371,700.00



LAFOURCHE PARISH

T15S - R22E

T16S - R22E

ST CHARLES PARISH

SL 347

TRACT 35706 - Jefferson, Lafourche and St. Charles Parishes, Louisiana

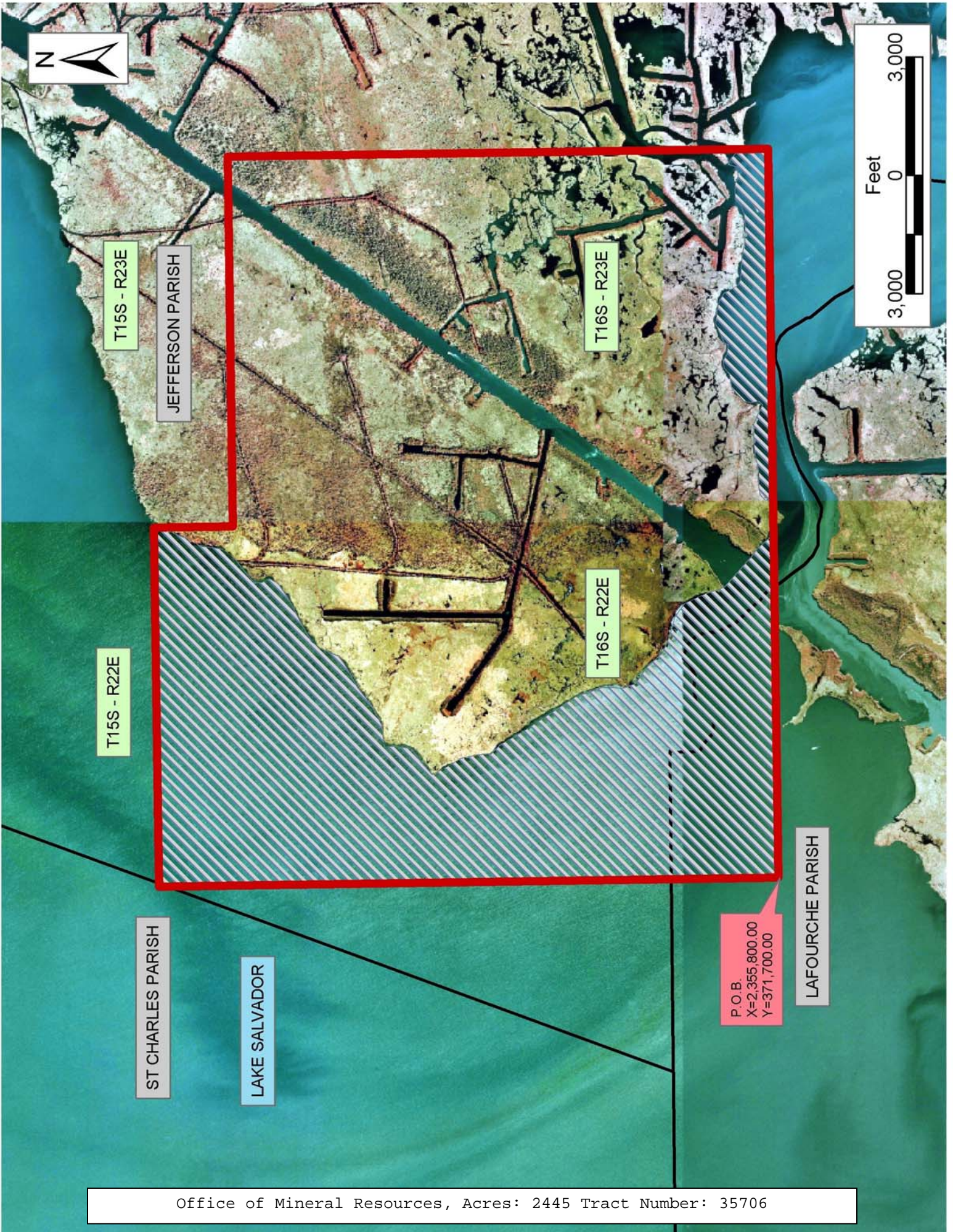
All of the lands now or formerly constituting the beds and bottoms of all water bodies of every nature and description the title of which vests in the State of Louisiana, together with all islands arising therein and other lands formed by accretion or by reliction, where allowed by law, excepting tax adjudicated lands, and not presently under mineral lease on October 8, 2003, situated in Jefferson, Lafourche and St. Charles Parishes, Louisiana, and more particularly described as follows: Beginning at a point having Coordinates of X = 2,355,800.00 and Y = 371,700.00; thence North 15,700.00 feet to a point having Coordinates of X = 2,355,800.00 and Y = 387,400.00; thence East 9,100.00 feet to a point having Coordinates of X = 2,364,900.00 and Y = 387,400.00; thence South 2,000.00 feet to a point having Coordinates of X = 2,364,900.00 and Y = 385,400.00; thence East 9,380.00 feet to a point having Coordinates of X = 2,374,280.00 and Y = 385,400.00; thence South 13,700.00 feet to a point having Coordinates of X = 2,374,280.00 and Y = 371,700.00; thence West 18,480.00 feet to the point of beginning, containing approximately **2,445.00 acres**, all as more particularly outlined on a plat on file in the Office of Mineral Resources, Department of Natural Resources. All bearings, distances and coordinates are based on Louisiana Coordinate System of 1927, (North or South Zone), where applicable.

NOTE: The above description of the Tract nominated for lease has been provided and corrected, where required, exclusively by the nomination party. Any mineral lease selected from this Tract and awarded by the Louisiana State Mineral Board shall be without warranty of any kind, either express, implied, or statutory, including, but not limited to, the implied warranties of merchantability and fitness for a particular purpose. Should the mineral lease awarded by the Louisiana State Mineral Board be subsequently modified, cancelled or abrogated due to the existence of conflicting leases, operating agreements, private claims or other future obligations or conditions which may affect all or any portion of the leased Tract, it shall not relieve the Lessee of the obligation to pay any bonus due thereon to the Louisiana State Mineral Board, nor shall the Louisiana State Mineral Board be obligated to refund any consideration paid by the Lessor prior to such modification, cancellation, or abrogation, including, but not limited to, bonuses, rentals and royalties.

NOTE: The State of Louisiana does hereby reserve, and this lease shall be subject to, the imprescriptible right of surface use in the nature of a servitude in favor of the Department of Natural Resources, including its Offices and Commissions, for the sole purpose of implementing, constructing, servicing and maintaining approved coastal zone management and/or restoration projects. Utilization of any and all rights derived under this lease by the mineral lessee, its agents, successors or assigns, shall not interfere with nor hinder the reasonable surface use by the Department of Natural Resources, its Offices or Commissions, as herein above reserved.

Applicant: Kare-Sue Energy, Inc.

Bidder	Cash Payment	Price/Acre	Rental	Oil	Gas	Other



T15S - R23E

JEFFERSON PARISH

T16S - R23E

T16S - R22E

T15S - R22E

ST CHARLES PARISH

LAKE SALVADOR

P.O.B.
X=2,355,800.00
Y=371,700.00

LAFOURCHE PARISH

TRACT 35707 - Portion of Block 2, Breton Sound Area, St. Bernard Parish, Louisiana

All of the lands now or formerly constituting the beds and bottoms of all water bodies of every nature and description the title of which vests in the State of Louisiana, together with all islands arising therein and other lands formed by accretion or by reliction, where allowed by law, excepting tax adjudicated lands, and not presently under mineral lease on October 8, 2003, situated in St. Bernard Parish, Louisiana, and more particularly described as follows: Beginning at a point having Coordinates of X = 2,664,850.00 and Y = 366,580.00, said point being the Southeast corner of Block 2, Breton Sound Area; thence West 7,375.00 feet on and along the South line of said Block 2, to a point having Coordinates of X = 2,657,475.00 and Y = 366,580.00; thence North 14,750.00 feet to a point having Coordinates of X = 2,657,475.00 and Y = 381,330.00, said point being on the North line of said Block 2; thence East 7,375.00 feet on and along said North line of said Block 2, to a point having Coordinates of X = 2,664,850.00 and Y = 381,330.00, said point being the Northeast corner of said Block 2; thence South 14,750.00 feet on and along the East line of said Block 2, to the point of beginning, containing approximately **2,497.27 acres**, all as more particularly outlined on a plat on file in the Office of Mineral Resources, Department of Natural Resources. All bearings, distances and coordinates are based on Louisiana Coordinate System of 1927, (North or South Zone), where applicable.

NOTE: The Office of Mineral Resources will require a minimum bonus of \$190 per acre and a minimum royalty of 22%.

NOTE: The above description of the Tract nominated for lease has been provided and corrected, where required, exclusively by the nomination party. Any mineral lease selected from this Tract and awarded by the Louisiana State Mineral Board shall be without warranty of any kind, either express, implied, or statutory, including, but not limited to, the implied warranties of merchantability and fitness for a particular purpose. Should the mineral lease awarded by the Louisiana State Mineral Board be subsequently modified, cancelled or abrogated due to the existence of conflicting leases, operating agreements, private claims or other future obligations or conditions which may affect all or any portion of the leased Tract, it shall not relieve the Lessee of the obligation to pay any bonus due thereon to the Louisiana State Mineral Board, nor shall the Louisiana State Mineral Board be obligated to refund any consideration paid by the Lessor prior to such modification, cancellation, or abrogation, including, but not limited to, bonuses, rentals and royalties.

NOTE: The State of Louisiana does hereby reserve, and this lease shall be subject to, the imprescriptible right of surface use in the nature of a servitude in favor of the Department of Natural Resources, including its Offices and Commissions, for the sole purpose of implementing, constructing, servicing and maintaining approved coastal zone management and/or restoration projects. Utilization of any and all rights derived

under this lease by the mineral lessee, its agents, successors or assigns, shall not interfere with nor hinder the reasonable surface use by the Department of Natural Resources, its Offices or Commissions, as herein above reserved.

Applicant: Robert A. Schroeder, Inc.

Bidder	Cash Payment	Price/Acre	Rental	Oil	Gas	Other



BLOCK CS0068

BLOCK CS0067

CHANDELEUR SOUND AREA

ST BERNARD PARISH

BRETON SOUND AREA

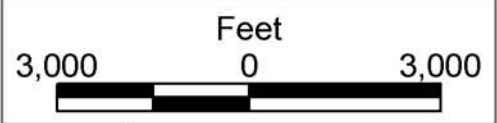
BLOCK BS0002

BLOCK BS0003

P.O.B.
X=2,664,850.00
Y=366,580.00

BLOCK BS0015

BLOCK BS0014



TRACT 35708 - Portion of Block 3, Breton Sound Area, St. Bernard Parish, Louisiana

All of the lands now or formerly constituting the beds and bottoms of all water bodies of every nature and description the title of which vests in the State of Louisiana, together with all islands arising therein and other lands formed by accretion or by reliction, where allowed by law, excepting tax adjudicated lands, and not presently under mineral lease on October 8, 2003, situated in St. Bernard Parish, Louisiana, and more particularly described as follows: Beginning at a point having Coordinates of X = 2,664,850.00 and Y = 381,330.00, said point being the Northwest corner of Block 3, Breton Sound Area; thence East 7,850.00 feet on and along the North line of said Block 3 to a point having Coordinates of X = 2,672,700.00 and Y = 381,330.00, said point being the Northwest corner of State Lease No. 17411; thence on and along the Western, Southern and Eastern boundaries of said State Lease No. 17411 the following courses and distances, to wit: South 1,330.00 feet to a point having Coordinates of X = 2,672,700.00 and Y = 380,000.00, said point being the Southwest corner of said State Lease No. 17411; East 2,490.00 feet to a point having Coordinates of X = 2,675,190.00 and Y = 380,000.00, said point being the Southeast corner of said State Lease No. 17411; and North 1,330.00 feet to a point having Coordinates of X = 2,675,190.00 and Y = 381,330.00, said point being the Northeast corner of said State Lease No. 17411, said point also being on said North line of said Block 3; thence East 4,410.00 feet on and along said North line of said Block 3 to a point having Coordinates of X = 2,679,600.00 and Y = 381,330.00, said point being the Northeast corner of said Block 3; thence South 7,375.00 feet on and along the East line of said Block 3 to a point having Coordinates of X = 2,679,600.00 and Y = 373,955.00; thence West 14,750.00 feet to a point having Coordinates of X = 2,664,850.00 and Y = 373,955.00, said point being on the West line of said Block 3; thence North 7,375.00 feet on and along said West line of said Block 3 to the point of beginning, containing approximately **2,421.25 acres**, all as more particularly outlined on a plat on file in the Office of Mineral Resources, Department of Natural Resources. All bearings, distances and coordinates are based on Louisiana Coordinate System of 1927, (North or South Zone), where applicable.

NOTE: The Office of Mineral Resources will require a minimum bonus of \$190 per acre and a minimum royalty of 22%.

NOTE: The above description of the Tract nominated for lease has been provided and corrected, where required, exclusively by the nomination party. Any mineral lease selected from this Tract and awarded by the Louisiana State Mineral Board shall be without warranty of any kind, either express, implied, or statutory, including, but not limited to, the implied warranties of merchantability and fitness for a particular purpose. Should the mineral lease awarded by the Louisiana State Mineral Board be subsequently modified, cancelled or abrogated due to the existence of conflicting leases, operating agreements, private claims or other future obligations or conditions which may affect all or any portion

of the leased Tract, it shall not relieve the Lessee of the obligation to pay any bonus due thereon to the Louisiana State Mineral Board, nor shall the Louisiana State Mineral Board be obligated to refund any consideration paid by the Lessor prior to such modification, cancellation, or abrogation, including, but not limited to, bonuses, rentals and royalties.

NOTE: The State of Louisiana does hereby reserve, and this lease shall be subject to, the imprescriptible right of surface use in the nature of a servitude in favor of the Department of Natural Resources, including its Offices and Commissions, for the sole purpose of implementing, constructing, servicing and maintaining approved coastal zone management and/or restoration projects. Utilization of any and all rights derived under this lease by the mineral lessee, its agents, successors or assigns, shall not interfere with nor hinder the reasonable surface use by the Department of Natural Resources, its Offices or Commissions, as herein above reserved.

Applicant: Robert A. Schroeder, Inc.

Bidder	Cash Payment	Price/Acre	Rental	Oil	Gas	Other



BLOCK CS0066

ST BERNARD PARISH

BLOCK BS0004



CHANDELEUR SOUND AREA

BLOCK CS0067

S.L. 17408

S.L. 17411

BLOCK BS0003

BRETON SOUND AREA

S.L. 17407

P.O.B.
X=2,664,850.00
Y=381,330.00

BLOCK CS0068

BLOCK BS0002

TRACT 35709 - St. Bernard Parish, Louisiana

All of the lands now or formerly constituting the beds and bottoms of all water bodies of every nature and description the title of which vests in the State of Louisiana, together with all islands arising therein and other lands formed by accretion or by reliction, where allowed by law, excepting tax adjudicated lands, and not presently under mineral lease on October 8, 2003, situated in St. Bernard Parish, Louisiana, and more particularly described as follows: Beginning at a point having Coordinates of X = 2,554,670.85 and Y = 380,067.44; thence North 88 degrees 04 minutes 33 seconds East 15,966.65 feet to a point having Coordinates of X = 2,570,628.50 and Y = 380,603.53; thence South 01 degrees 01 minutes 20 seconds East 5,088.26 feet to a point having Coordinates of X = 2,570,719.27 and Y = 375,516.08; thence South 87 degrees 26 minutes 22 seconds West 15,898.69 feet to a point having Coordinates of X = 2,554,836.45 and Y = 374,805.82; thence North 01 degrees 48 minutes 10 seconds West 5,264.23 feet to the point of beginning, containing approximately **1,879 acres**, all as more particularly outlined on a plat on file in the Office of Mineral Resources, Department of Natural Resources. All bearings, distances and coordinates are based on Louisiana Coordinate System of 1927, (North or South Zone), where applicable.

NOTE: The above description of the Tract nominated for lease has been provided and corrected, where required, exclusively by the nomination party. Any mineral lease selected from this Tract and awarded by the Louisiana State Mineral Board shall be without warranty of any kind, either express, implied, or statutory, including, but not limited to, the implied warranties of merchantability and fitness for a particular purpose. Should the mineral lease awarded by the Louisiana State Mineral Board be subsequently modified, cancelled or abrogated due to the existence of conflicting leases, operating agreements, private claims or other future obligations or conditions which may affect all or any portion of the leased Tract, it shall not relieve the Lessee of the obligation to pay any bonus due thereon to the Louisiana State Mineral Board, nor shall the Louisiana State Mineral Board be obligated to refund any consideration paid by the Lessor prior to such modification, cancellation, or abrogation, including, but not limited to, bonuses, rentals and royalties.

NOTE: The State of Louisiana does hereby reserve, and this lease shall be subject to, the imprescriptible right of surface use in the nature of a servitude in favor of the Department of Natural Resources, including its Offices and Commissions, for the sole purpose of implementing, constructing, servicing and maintaining approved coastal zone management and/or restoration projects. Utilization of any and all rights derived under this lease by the mineral lessee, its agents, successors or assigns, shall not interfere with nor hinder the reasonable surface use by the Department of Natural Resources, its Offices or Commissions, as herein above reserved.

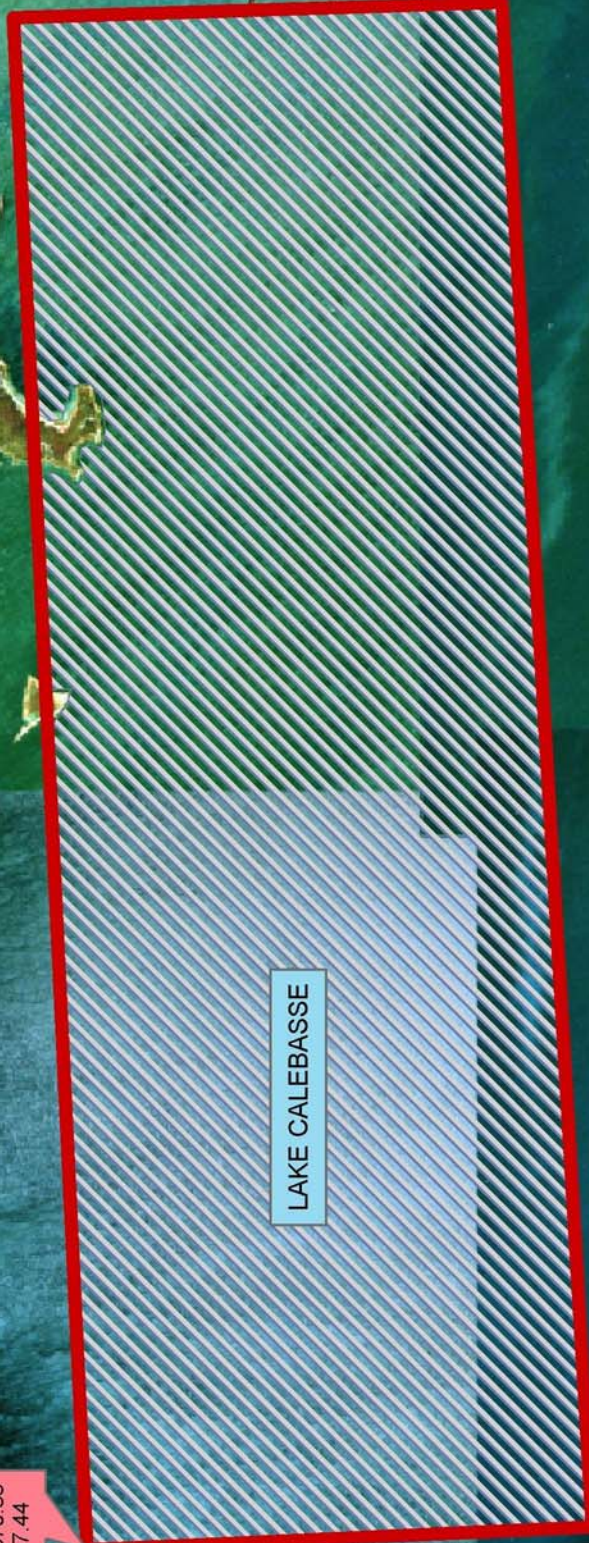
NOTE: The Department of Wildlife and Fisheries has designated certain areas in the coastal waters of the State of Louisiana as Oyster Seed Bed Areas. The exact location of those Seed Bed Areas must be obtained from the Department of Wildlife and Fisheries and any work done under a mineral lease from the State of Louisiana may necessarily be conducted in conformity with the rules and regulations promulgated by the said Department of Wildlife and Fisheries for Oyster Seed Bed Areas.

Applicant: Harold J. Anderson, Inc.

Bidder	Cash Payment	Price/Acre	Rental	Oil	Gas	Other



ST BERNARD PARISH



LAKE CALEBASSE

P.O.B.
X=2,554,670.85
Y=380,067.44

TRACT 35710 - St. Bernard Parish, Louisiana

All of the lands now or formerly constituting the beds and bottoms of all water bodies of every nature and description the title of which vests in the State of Louisiana, together with all islands arising therein and other lands formed by accretion or by reliction, where allowed by law, excepting tax adjudicated lands, and not presently under mineral lease on October 8, 2003, situated in St. Bernard Parish, Louisiana, and more particularly described as follows: Beginning at the Northeast corner of State Lease No. 17180 having Coordinates of X = 2,560,321.93 and Y = 369,694.65; thence South 87 degrees 09 minutes 39 seconds West 2,656.54 feet on the North line of said State Lease No. 17180 to its Northwest corner, also being the Northeast corner of State Lease No. 17179 having Coordinates of X = 2,557,668.65 and Y = 369,563.07; thence South 87 degrees 09 minutes 39 seconds West 2,656.54 feet on the North line of said State Lease No. 17179 to its Northwest corner having Coordinates of X = 2,555,015.37 and Y = 369,431.48; thence North 01 degrees 54 minutes 24 seconds West 5,377.32 feet to a point having Coordinates of X = 2,554,836.45 and Y = 374,805.82; thence North 87 degrees 26 minutes 22 seconds East 15,898.69 feet to a point having Coordinates of X = 2,570,719.27 and Y = 375,516.08; thence South 00 degrees 52 minutes 02 seconds East 5,287.20 feet to a point having Coordinates of X = 2,570,799.29 and Y = 370,229.49; thence South 87 degrees 04 minutes 40 seconds West 10,491.00 feet to the point of beginning, containing approximately **1,557 acres**, all as more particularly outlined on a plat on file in the Office of Mineral Resources, Department of Natural Resources. All bearings, distances and coordinates are based on Louisiana Coordinate System of 1927, (North or South Zone), where applicable.

NOTE: The above description of the Tract nominated for lease has been provided and corrected, where required, exclusively by the nomination party. Any mineral lease selected from this Tract and awarded by the Louisiana State Mineral Board shall be without warranty of any kind, either express, implied, or statutory, including, but not limited to, the implied warranties of merchantability and fitness for a particular purpose. Should the mineral lease awarded by the Louisiana State Mineral Board be subsequently modified, cancelled or abrogated due to the existence of conflicting leases, operating agreements, private claims or other future obligations or conditions which may affect all or any portion of the leased Tract, it shall not relieve the Lessee of the obligation to pay any bonus due thereon to the Louisiana State Mineral Board, nor shall the Louisiana State Mineral Board be obligated to refund any consideration paid by the Lessor prior to such modification, cancellation, or abrogation, including, but not limited to, bonuses, rentals and royalties.

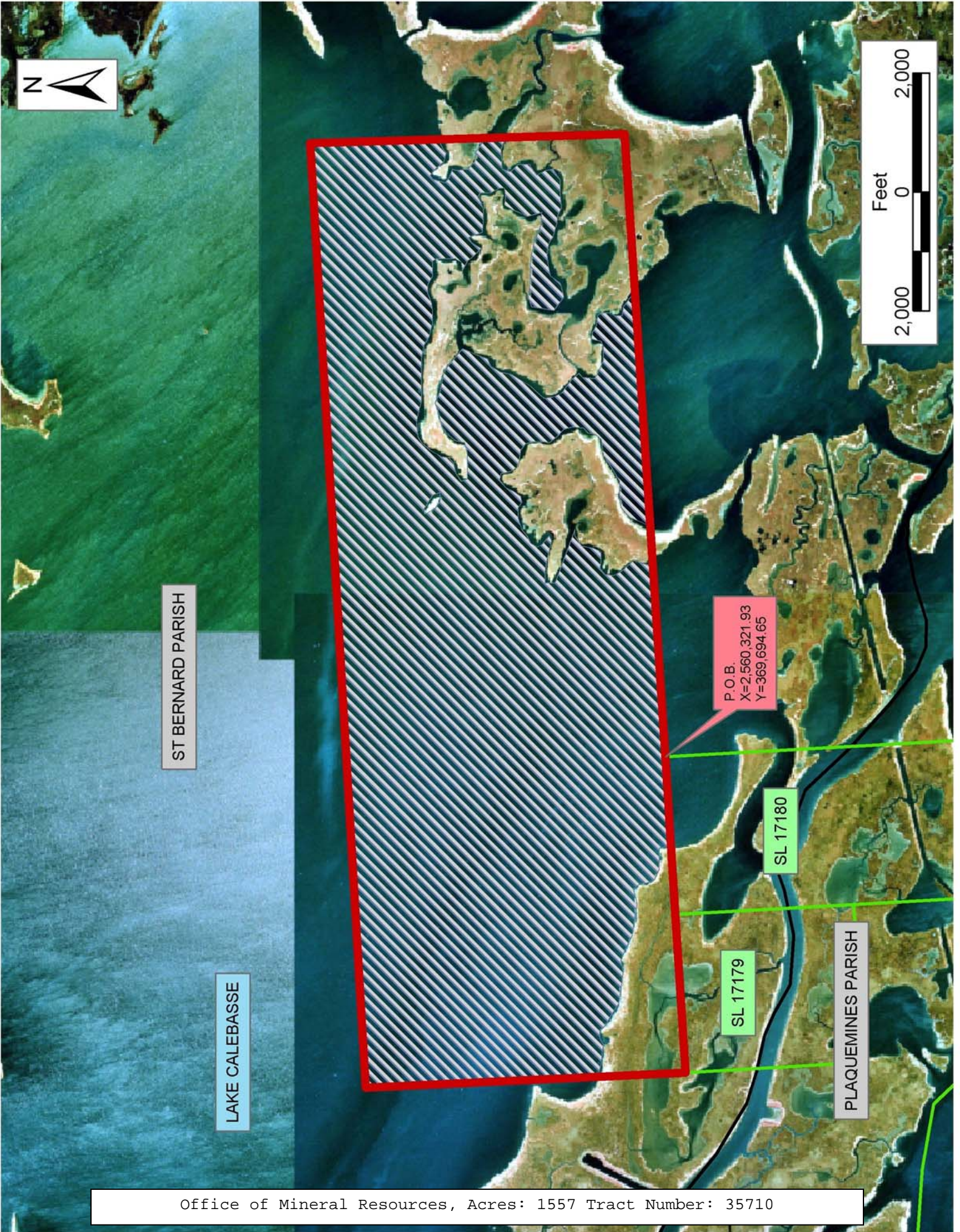
NOTE: The State of Louisiana does hereby reserve, and this lease shall be subject to, the imprescriptible right of surface use in the nature of a servitude in favor of the Department of Natural Resources, including its Offices and Commissions, for the sole purpose of implementing, constructing, servicing and maintaining approved coastal zone management

and/or restoration projects. Utilization of any and all rights derived under this lease by the mineral lessee, its agents, successors or assigns, shall not interfere with nor hinder the reasonable surface use by the Department of Natural Resources, its Offices or Commissions, as herein above reserved.

NOTE: The Department of Wildlife and Fisheries has designated certain areas in the coastal waters of the State of Louisiana as Oyster Seed Bed Areas. The exact location of those Seed Bed Areas must be obtained from the Department of Wildlife and Fisheries and any work done under a mineral lease from the State of Louisiana may necessarily be conducted in conformity with the rules and regulations promulgated by the said Department of Wildlife and Fisheries for Oyster Seed Bed Areas.

Applicant: Harold J. Anderson, Inc.

Bidder	Cash Payment	Price/Acre	Rental	Oil	Gas	Other



ST BERNARD PARISH

LAKE CALCASIEU

P.O.B.
X=2,560,321.93
Y=369,694.65

SL 17179

SL 17180

PLAQUEMINES PARISH

TRACT 35711 - Portion of Block 3, Breton Sound Area, St. Bernard Parish, Louisiana

All of the lands now or formerly constituting the beds and bottoms of all water bodies of every nature and description the title of which vests in the State of Louisiana, together with all islands arising therein and other lands formed by accretion or by reliction, where allowed by law, excepting tax adjudicated lands, and not presently under mineral lease on October 8, 2003, situated in St. Bernard Parish, Louisiana, and more particularly described as follows: Beginning at a point having Coordinates of X = 2,664,850.00 and Y = 366,580.00, said point being the Southwest corner of Block 3, Breton Sound Area; thence North 7,375.00 feet on and along the West line of said Block 3 to a point having Coordinates of X = 2,664,850.00 and Y = 373,955.00; thence East 14,750.00 feet to a point having Coordinates of X = 2,679,600.00 and Y = 373,955.00, said point being on the East line of said Block 3; thence South 7,375.00 feet on and along said East line of said Block 3 to a point having Coordinates of X = 2,679,600.00 and Y = 366,580.00, said point being the Southeast corner of said Block 3; thence West 14,750.00 feet on and along the South line of said Block 3 to the point of beginning, containing approximately **2,497.27 acres**, all as more particularly outlined on a plat on file in the Office of Mineral Resources, Department of Natural Resources. All bearings, distances and coordinates are based on Louisiana Coordinate System of 1927, (North or South Zone), where applicable.

NOTE: The Office of Mineral Resources will require a minimum bonus of \$190 per acre and a minimum royalty of 22%.

NOTE: The above description of the Tract nominated for lease has been provided and corrected, where required, exclusively by the nomination party. Any mineral lease selected from this Tract and awarded by the Louisiana State Mineral Board shall be without warranty of any kind, either express, implied, or statutory, including, but not limited to, the implied warranties of merchantability and fitness for a particular purpose. Should the mineral lease awarded by the Louisiana State Mineral Board be subsequently modified, cancelled or abrogated due to the existence of conflicting leases, operating agreements, private claims or other future obligations or conditions which may affect all or any portion of the leased Tract, it shall not relieve the Lessee of the obligation to pay any bonus due thereon to the Louisiana State Mineral Board, nor shall the Louisiana State Mineral Board be obligated to refund any consideration paid by the Lessor prior to such modification, cancellation, or abrogation, including, but not limited to, bonuses, rentals and royalties.

NOTE: The State of Louisiana does hereby reserve, and this lease shall be subject to, the imprescriptible right of surface use in the nature of a servitude in favor of the Department of Natural Resources, including its Offices and Commissions, for the sole purpose of implementing, constructing, servicing and maintaining approved coastal zone management and/or restoration projects. Utilization of any and all rights derived

under this lease by the mineral lessee, its agents, successors or assigns, shall not interfere with nor hinder the reasonable surface use by the Department of Natural Resources, its Offices or Commissions, as herein above reserved.

Applicant: Robert A. Schroeder, Inc.

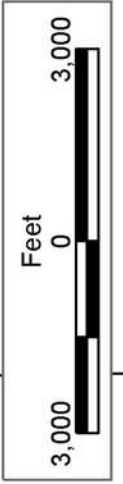
Bidder	Cash Payment	Price/Acre	Rental	Oil	Gas	Other



BLOCK BS0004

BLOCK BS0013

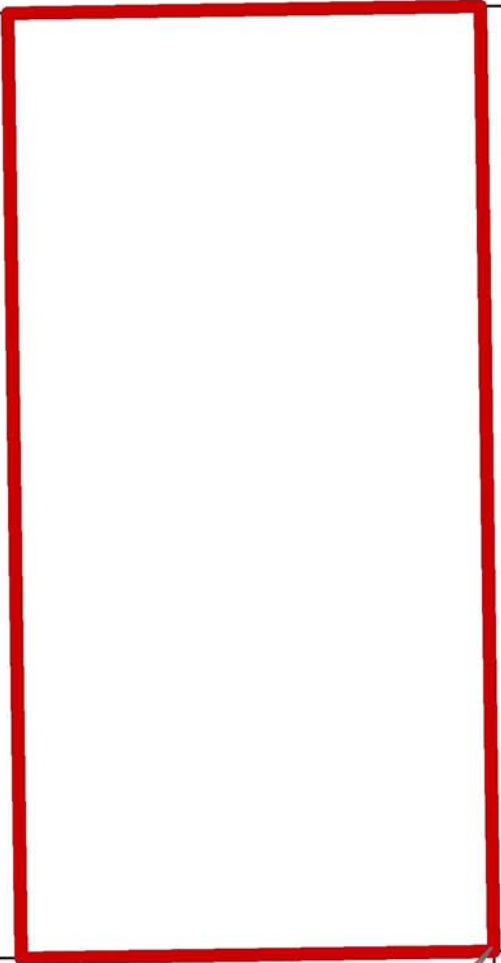
ST BERNARD PARISH



BLOCK BS0003

BLOCK BS0014

BRETON SOUND AREA



BLOCK BS0002

BLOCK BS0015

P.O.B.
X=2,664,850.00
Y=366,580.00

TRACT 35712 - Portion of Block 1, Breton Sound Area, St. Bernard Parish, Louisiana

All of the lands now or formerly constituting the beds and bottoms of all water bodies of every nature and description the title of which vests in the State of Louisiana, together with all islands arising therein and other lands formed by accretion or by reliction, where allowed by law, excepting tax adjudicated lands, and not presently under mineral lease on October 8, 2003, situated in St. Bernard Parish, Louisiana, and more particularly described as follows: Beginning at a point having Coordinates of X = 2,635,350.00 and Y = 366,580.00, said point being the Southwest corner of Block 1, Breton Sound Area; thence North 6,300.00 feet on and along the West line of said Block 1 to a point having Coordinates of X = 2,635,350.00 and Y = 372,880.00; thence East 14,750.00 feet to a point having Coordinates of X = 2,650,100.00 and Y = 372,880.00, said point being on the East line of said Block 1; thence South 6,300.00 feet on and along said East line of said Block 1 to a point having Coordinates of X = 2,650,100.00 and Y = 366,580.00, said point being the Southeast corner of said Block 1; thence West 14,750.00 feet on and along the South line of said Block 1 to the point of beginning, containing approximately **2,133.26 acres**, all as more particularly outlined on a plat on file in the Office of Mineral Resources, Department of Natural Resources. All bearings, distances and coordinates are based on Louisiana Coordinate System of 1927, (North or South Zone), where applicable.

NOTE: The above description of the Tract nominated for lease has been provided and corrected, where required, exclusively by the nomination party. Any mineral lease selected from this Tract and awarded by the Louisiana State Mineral Board shall be without warranty of any kind, either express, implied, or statutory, including, but not limited to, the implied warranties of merchantability and fitness for a particular purpose. Should the mineral lease awarded by the Louisiana State Mineral Board be subsequently modified, cancelled or abrogated due to the existence of conflicting leases, operating agreements, private claims or other future obligations or conditions which may affect all or any portion of the leased Tract, it shall not relieve the Lessee of the obligation to pay any bonus due thereon to the Louisiana State Mineral Board, nor shall the Louisiana State Mineral Board be obligated to refund any consideration paid by the Lessor prior to such modification, cancellation, or abrogation, including, but not limited to, bonuses, rentals and royalties.

NOTE: The State of Louisiana does hereby reserve, and this lease shall be subject to, the imprescriptible right of surface use in the nature of a servitude in favor of the Department of Natural Resources, including its Offices and Commissions, for the sole purpose of implementing, constructing, servicing and maintaining approved coastal zone management and/or restoration projects. Utilization of any and all rights derived under this lease by the mineral lessee, its agents, successors or assigns, shall not interfere with nor hinder the reasonable surface use by the

Department of Natural Resources, its Offices or Commissions, as herein above reserved.

Applicant: Robert A. Schroeder, Inc.

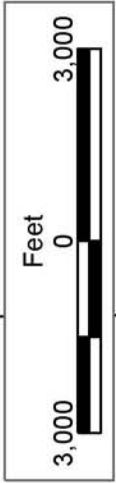
Bidder	Cash Payment	Price/Acre	Rental	Oil	Gas	Other



BRETON SOUND AREA

BLOCK BS0002

BLOCK BS0015



BLOCK BS0001

BLOCK BS0016

ST BERNARD PARISH

MAIN PASS AREA, REVISED

BLOCK MP0004

BLOCK MP0009

P.O.B.
X=2,635,350.00
Y=366,580.00