

**TRACT 35693 - Jefferson Parish, Louisiana**

All of the lands now or formerly constituting the beds and bottoms of all water bodies of every nature and description the title of which vests in the State of Louisiana, together with all islands arising therein and other lands formed by accretion or by reliction, where allowed by law, excepting tax adjudicated lands, and not presently under mineral lease on October 8, 2003, situated in Jefferson Parish, Louisiana, and more particularly described as follows: Beginning at a point having Coordinates of X = 2,378,500.00 and Y = 395,160.00; thence West 16,470.72 feet to a point on the Eastern boundary line of State Lease No. 17709 having Coordinates of X = 2,362,029.28 and Y = 395,160.00; thence along the boundary of said State Lease No. 17709 the following courses: North 12 degrees 44 minutes 08 seconds East 225.55 feet and North 39 degrees 25 minutes 09 seconds West 1,838.14 feet to the Northeast corner of said State Lease No. 17709, also being a point on the South line of State Lease No. 17708 having Coordinates of X = 2,360,911.80 and Y = 396,800.00; thence along the boundary of said State Lease No. 17708 the following courses: East 1,638.20 feet and North 4,105.28 feet to a corner of said State Lease No. 17708, also being a point on the South line of State Lease No. 17140 having Coordinates of X = 2,362,550.00 and Y = 400,905.28; thence along the boundary of said State Lease No. 17140 the following courses: East 2,564.19 feet, North 2,315.39 feet, West 540.00 feet and North 44 degrees 00 minutes 00 seconds West 1,884.54 feet to a point on the Eastern boundary line of said State Lease No. 17140 having Coordinates of X = 2,363,265.08 and Y = 404,576.30; thence East 15,234.92 feet to a point having Coordinates of X = 2,378,500.00 and Y = 404,576.30; thence South 9,416.30 feet to the point of beginning, containing approximately **2,500.00 acres**, all as more particularly outlined on a plat on file in the Office of Mineral Resources, Department of Natural Resources. All bearings, distances and coordinates are based on Louisiana Coordinate System of 1927, (North or South Zone), where applicable.

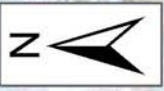
NOTE: The above description of the Tract nominated for lease has been provided and corrected, where required, exclusively by the nomination party. Any mineral lease selected from this Tract and awarded by the Louisiana State Mineral Board shall be without warranty of any kind, either express, implied, or statutory, including, but not limited to, the implied warranties of merchantability and fitness for a particular purpose. Should the mineral lease awarded by the Louisiana State Mineral Board be subsequently modified, cancelled or abrogated due to the existence of conflicting leases, operating agreements, private claims or other future obligations or conditions which may affect all or any portion of the leased Tract, it shall not relieve the Lessee of the obligation to pay any bonus due thereon to the Louisiana State Mineral Board, nor shall the Louisiana State Mineral Board be obligated to refund any consideration paid by the Lessor prior to such modification, cancellation, or abrogation, including, but not limited to, bonuses, rentals and royalties.

NOTE: The State of Louisiana does hereby reserve, and this lease shall be subject to, the imprescriptible right of surface use in the nature of a servitude in favor of the Department of Natural Resources, including its Offices and Commissions, for the sole purpose of implementing, constructing, servicing and maintaining approved coastal zone management and/or restoration projects. Utilization of any and all rights derived under this lease by the mineral lessee, its agents, successors or assigns, shall not interfere with nor hinder the reasonable surface use by the Department of Natural Resources, its Offices or Commissions, as herein above reserved.

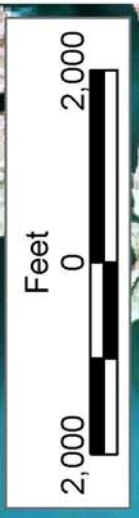
Applicant: Kare-Sue Energy, Inc.

Bidder	Cash Payment	Price/Acre	Rental	Oil	Gas	Other





P.O.B.  
X=2,378,500.00  
Y=395,160.00



JEFFERSON PARISH

LAKE SALVADOR

T15S - R23E

ST CHARLES PARISH

SL 17140

SL 17708

SL 17709

Office of Mineral Resources, Acres: 2500 Tract Number: 35693



**TRACT 35694 - Portion of Block 60, Chandeleur Sound Area, St. Bernard Parish, Louisiana**

All of the lands now or formerly constituting the beds and bottoms of all water bodies of every nature and description the title of which vests in the State of Louisiana, together with all islands arising therein and other lands formed by accretion or by reliction, where allowed by law, excepting tax adjudicated lands, and not presently under mineral lease on October 8, 2003, situated in St. Bernard Parish, Louisiana, and more particularly described as follows: Beginning at the Northwest corner of Block 60, Chandeleur Sound Area, having Coordinates of X = 2,768,100.00 and Y = 396,080.00; thence East 10,936.49 feet along the North line of said Block 60 to a point on the Coastline derived from the June 16, 1975 Decree in the United States vs. Louisiana No. 9 Original, having Coordinates of X = 2,779,036.49 and Y = 396,080.00; thence along said Coastline the following courses: South 30 degrees 59 minutes 02 seconds West 2,164.91 feet to a point having Coordinates of X = 2,777,922.00 and Y = 394,224.00; South 38 degrees 14 minutes 21 seconds West 2,318.46 feet to a point having Coordinates of X = 2,776,487.00 and Y = 392,403.00; South 61 degrees 04 minutes 54 seconds West 1,306.97 feet to a point having Coordinates of X = 2,775,343.00 and Y = 391,771.00; South 26 degrees 24 minutes 46 seconds West 1,177.97 feet to a point having Coordinates of X = 2,774,819.00 and Y = 390,716.00; South 19 degrees 24 minutes 17 seconds West 448.48 feet to a point having Coordinates of X = 2,774,670.00 and Y = 390,293.00; South 50 degrees 48 minutes 49 seconds West 900.54 feet to a point having Coordinates of X = 2,773,972.00 and Y = 389,724.00 and South 31 degrees 31 minutes 26 seconds West 1,195.42 feet to a point having Coordinates of X = 2,773,346.97 and Y = 388,705.00; thence West 5,246.97 feet to a point on the West line of said Block 60 having Coordinates of X = 2,768,100.00 and Y = 388,705.00; thence North 7,375.00 feet along the West line of said Block 60 to the point of beginning, containing **1,381.15 acres**, all as more particularly outlined on a plat on file in the Office of Mineral Resources, Department of Natural Resources. All bearings, distances and coordinates are based on Louisiana Coordinate System of 1927, (North or South Zone), where applicable.

NOTE: The Office of Mineral Resources will require a minimum bonus of \$190 per acre and a minimum royalty of 22%.

NOTE: The above description of the Tract nominated for lease has been provided and corrected, where required, exclusively by the nomination party. Any mineral lease selected from this Tract and awarded by the Louisiana State Mineral Board shall be without warranty of any kind, either express, implied, or statutory, including, but not limited to, the implied warranties of merchantability and fitness for a particular purpose. Should the mineral lease awarded by the Louisiana State Mineral Board be subsequently modified, cancelled or abrogated due to the existence of conflicting leases, operating agreements, private claims or other future obligations or conditions which may affect all or any portion of the leased Tract, it shall not relieve the Lessee of the obligation to

pay any bonus due thereon to the Louisiana State Mineral Board, nor shall the Louisiana State Mineral Board be obligated to refund any consideration paid by the Lessor prior to such modification, cancellation, or abrogation, including, but not limited to, bonuses, rentals and royalties.

NOTE: The State of Louisiana does hereby reserve, and this lease shall be subject to, the imprescriptible right of surface use in the nature of a servitude in favor of the Department of Natural Resources, including its Offices and Commissions, for the sole purpose of implementing, constructing, servicing and maintaining approved coastal zone management and/or restoration projects. Utilization of any and all rights derived under this lease by the mineral lessee, its agents, successors or assigns, shall not interfere with nor hinder the reasonable surface use by the Department of Natural Resources, its Offices or Commissions, as herein above reserved.

Applicant: B.T. Exploration, LP

Bidder	Cash Payment	Price/Acre	Rental	Oil	Gas	Other





BLOCK CS0059

ST BERNARD PARISH

BLOCK CS0060

CHANDELEUR SOUND AREA

BLOCK CS0060

P.O.B.  
X=2,768,100.00  
Y=396,080.00

BLOCK CS0061



**TRACT 35695 - Portion of Block 73, Chandeleur Sound Area, St. Bernard Parish, Louisiana**

All of the lands now or formerly constituting the beds and bottoms of all water bodies of every nature and description the title of which vests in the State of Louisiana, together with all islands arising therein and other lands formed by accretion or by reliction, where allowed by law, excepting tax adjudicated lands, and not presently under mineral lease on October 8, 2003, situated in St. Bernard Parish, Louisiana, and more particularly described as follows: Beginning at a point having Coordinates of X = 2,570,060.31 and Y = 396,759.91; thence North 87 degrees 19 minutes 56 seconds East approximately 6,095 feet to a point on the Western boundary of State Lease No. 4909, as amended; thence along the boundary of said State Lease No. 4909 the following courses: Southwesterly and Southeasterly to the Southwest corner of State Lease No. 5452, as amended; thence Northeasterly along the boundary of said State Lease No. 5452 to its Southeast corner, also being the Southwest corner of State Lease No. 4310, as amended; thence Northeasterly along the boundary of said State Lease No. 4310 to its Northeast corner, also being a point on the Eastern boundary of said State Lease No. 4909; thence Northeasterly along the boundary of said State Lease No. 4909 to the point of intersection with a line having a bearing of North 87 degrees 19 minutes 56 seconds East; thence North 87 degrees 19 minutes 56 seconds East approximately 259 feet to a point having Coordinates of X = 2,580,802.00 and Y = 397,260.43; thence South 02 degrees 15 minutes 28 seconds East approximately 4,124 feet to a point on the Northern boundary line of State Lease No. 4310, as amended; thence along the boundary of said State Lease No. 4310 the following courses: Northwesterly, Southwesterly and Southerly to the point of intersection with a line having a bearing of South 87 degrees 31 minutes 17 seconds West; thence South 87 degrees 31 minutes 17 seconds West approximately 7,514 feet to a point having Coordinates of X = 2,570,342.66 and Y = 391,526.25; thence North 03 degrees 05 minutes 17 seconds West 5,241.27 feet to the point of beginning, **LESS AND EXCEPT** any portion of State Lease No. 4310, as amended, State Lease No. 4909, as amended, and State Lease No. 5452, as amended, that may fall within the above described tract, containing approximately **667 acres**, all as more particularly outlined on a plat on file in the Office of Mineral Resources, Department of Natural Resources. All bearings, distances and coordinates are based on Louisiana Coordinate System of 1927, (North or South Zone), where applicable.

NOTE: The above description of the Tract nominated for lease has been provided and corrected, where required, exclusively by the nomination party. Any mineral lease selected from this Tract and awarded by the Louisiana State Mineral Board shall be without warranty of any kind, either express, implied, or statutory, including, but not limited to, the implied warranties of merchantability and fitness for a particular purpose. Should the mineral lease awarded by the Louisiana State Mineral Board be subsequently modified, cancelled or abrogated due to the existence of conflicting leases, operating agreements, private claims or

other future obligations or conditions which may affect all or any portion of the leased Tract, it shall not relieve the Lessee of the obligation to pay any bonus due thereon to the Louisiana State Mineral Board, nor shall the Louisiana State Mineral Board be obligated to refund any consideration paid by the Lessor prior to such modification, cancellation, or abrogation, including, but not limited to, bonuses, rentals and royalties.

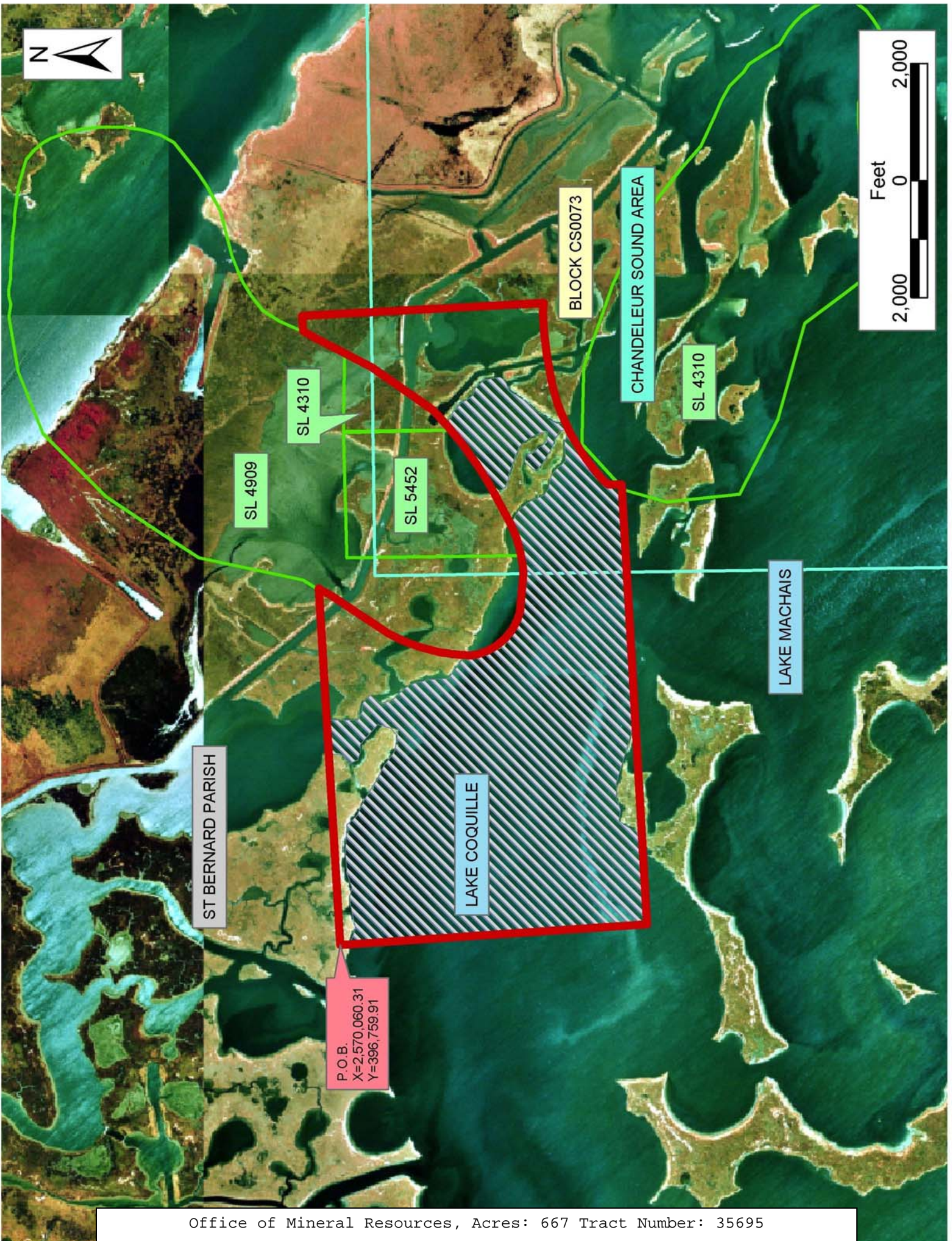
NOTE: The State of Louisiana does hereby reserve, and this lease shall be subject to, the imprescriptible right of surface use in the nature of a servitude in favor of the Department of Natural Resources, including its Offices and Commissions, for the sole purpose of implementing, constructing, servicing and maintaining approved coastal zone management and/or restoration projects. Utilization of any and all rights derived under this lease by the mineral lessee, its agents, successors or assigns, shall not interfere with nor hinder the reasonable surface use by the Department of Natural Resources, its Offices or Commissions, as herein above reserved.

NOTE: The Department of Wildlife and Fisheries has designated certain areas in the coastal waters of the State of Louisiana as Oyster Seed Bed Areas. The exact location of those Seed Bed Areas must be obtained from the Department of Wildlife and Fisheries and any work done under a mineral lease from the State of Louisiana may necessarily be conducted in conformity with the rules and regulations promulgated by the said Department of Wildlife and Fisheries for Oyster Seed Bed Areas.

Applicant: Harold J. Anderson, Inc.

Bidder	Cash Payment	Price/Acre	Rental	Oil	Gas	Other







**TRACT 35696 - Portion of Blocks 47, 72, and 73, Chandeleur Sound Area, St. Bernard Parish, Louisiana**

All of the lands now or formerly constituting the beds and bottoms of all water bodies of every nature and description the title of which vests in the State of Louisiana, together with all islands arising therein and other lands formed by accretion or by reliction, where allowed by law, excepting tax adjudicated lands, and not presently under mineral lease on October 8, 2003, situated in St. Bernard Parish, Louisiana, and more particularly described as follows: Beginning at a point having Coordinates of X = 2,591,238.95 and Y = 397,230.45; thence South 02 degrees 02 minutes 40 seconds East 5,235.93 feet to a point having Coordinates of X = 2,591,425.73 and Y = 391,997.85; thence South 89 degrees 56 minutes 45 seconds West approximately 7,524.42 feet to a point on the Eastern boundary line of State Lease No. 4310, as amended; thence Northwesterly along the boundary of said State Lease No. 4310 to the point of intersection with a line having a bearing of North 02 degrees 15 minutes 28 seconds West; thence North 02 degrees 15 minutes 28 seconds West approximately 4,124 feet to a point having Coordinates of X = 2,580,802.00 and Y = 397,260.43; thence South 89 degrees 50 minutes 08 seconds East 10,436.99 feet to the point of beginning, **LESS AND EXCEPT** that portion, if any, of said State Lease No. 4310, as amended, that may lie within the above described tract, containing approximately **125 acres**, all as more particularly outlined on a plat on file in the Office of Mineral Resources, Department of Natural Resources. All bearings, distances and coordinates are based on Louisiana Coordinate System of 1927, (North or South Zone), where applicable.

NOTE: The above description of the Tract nominated for lease has been provided and corrected, where required, exclusively by the nomination party. Any mineral lease selected from this Tract and awarded by the Louisiana State Mineral Board shall be without warranty of any kind, either express, implied, or statutory, including, but not limited to, the implied warranties of merchantability and fitness for a particular purpose. Should the mineral lease awarded by the Louisiana State Mineral Board be subsequently modified, cancelled or abrogated due to the existence of conflicting leases, operating agreements, private claims or other future obligations or conditions which may affect all or any portion of the leased Tract, it shall not relieve the Lessee of the obligation to pay any bonus due thereon to the Louisiana State Mineral Board, nor shall the Louisiana State Mineral Board be obligated to refund any consideration paid by the Lessor prior to such modification, cancellation, or abrogation, including, but not limited to, bonuses, rentals and royalties.

NOTE: The State of Louisiana does hereby reserve, and this lease shall be subject to, the imprescriptible right of surface use in the nature of a servitude in favor of the Department of Natural Resources, including its Offices and Commissions, for the sole purpose of implementing, constructing, servicing and maintaining approved coastal zone management and/or restoration projects. Utilization of any and all rights derived

under this lease by the mineral lessee, its agents, successors or assigns, shall not interfere with nor hinder the reasonable surface use by the Department of Natural Resources, its Offices or Commissions, as herein above reserved.

NOTE: The Department of Wildlife and Fisheries has designated certain areas in the coastal waters of the State of Louisiana as Oyster Seed Bed Areas. The exact location of those Seed Bed Areas must be obtained from the Department of Wildlife and Fisheries and any work done under a mineral lease from the State of Louisiana may necessarily be conducted in conformity with the rules and regulations promulgated by the said Department of Wildlife and Fisheries for Oyster Seed Bed Areas.

Applicant: Harold J. Anderson, Inc.

Bidder	Cash Payment	Price/Acre	Rental	Oil	Gas	Other





BLOCK CS0047

P.O.B.  
X=2,591,238.95  
Y=397,230.45

BLOCK CS0072

SL 15484

CHANDELEUR SOUND AREA

ST BERNARD PARISH

T15S - R17E

BLOCK CS0073

SL 4909

SL 4310

**TRACT 35697 - Jefferson and St. Charles Parishes, Louisiana**

All of the lands now or formerly constituting the beds and bottoms of all water bodies of every nature and description the title of which vests in the State of Louisiana, together with all islands arising therein and other lands formed by accretion or by reliction, where allowed by law, excepting tax adjudicated lands, and not presently under mineral lease on October 8, 2003, situated in Jefferson and St. Charles Parishes, Louisiana, and more particularly described as follows: Beginning at a point having Coordinates of X = 2,348,865.00 and Y = 399,645.00; thence East 3,480.61 feet to a point on the West line of State Lease No. 17707 having Coordinates of X = 2,352,345.61 and Y = 399,645.00; thence along the boundary of said State Lease No. 17707 the following courses: South 22 degrees 02 minutes 21 seconds East 3,668.03 feet and South 74 degrees 13 minutes 07 seconds East 3,146.61 feet to its Southeast corner, also being the Southwest corner of State Lease No. 17709 having Coordinates of X = 2,356,750.00 and Y = 395,389.22; thence South 74 degrees 13 minutes 07 seconds East 3,398.09 feet along the Southern boundary line of said State Lease No. 17709 to a point having Coordinates of X = 2,360,020.00 and Y = 394,465.05; thence South 7,065.05 feet to a point having Coordinates of X = 2,360,020.00 and Y = 387,400.00; thence West 11,155.00 feet to a point having Coordinates of X = 2,348,865.00 and Y = 387,400.00; thence North 12,245.00 feet to the point of beginning, containing approximately **2,461.77 acres**, all as more particularly outlined on a plat on file in the Office of Mineral Resources, Department of Natural Resources. All bearings, distances and coordinates are based on Louisiana Coordinate System of 1927, (North or South Zone), where applicable.

NOTE: The above description of the Tract nominated for lease has been provided and corrected, where required, exclusively by the nomination party. Any mineral lease selected from this Tract and awarded by the Louisiana State Mineral Board shall be without warranty of any kind, either express, implied, or statutory, including, but not limited to, the implied warranties of merchantability and fitness for a particular purpose. Should the mineral lease awarded by the Louisiana State Mineral Board be subsequently modified, cancelled or abrogated due to the existence of conflicting leases, operating agreements, private claims or other future obligations or conditions which may affect all or any portion of the leased Tract, it shall not relieve the Lessee of the obligation to pay any bonus due thereon to the Louisiana State Mineral Board, nor shall the Louisiana State Mineral Board be obligated to refund any consideration paid by the Lessor prior to such modification, cancellation, or abrogation, including, but not limited to, bonuses, rentals and royalties.

NOTE: The State of Louisiana does hereby reserve, and this lease shall be subject to, the imprescriptible right of surface use in the nature of a servitude in favor of the Department of Natural Resources, including its Offices and Commissions, for the sole purpose of implementing, constructing, servicing and maintaining approved coastal zone management and/or restoration projects. Utilization of any and all rights derived

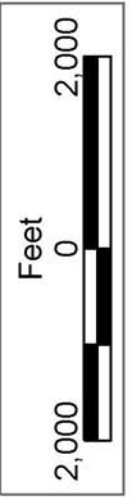
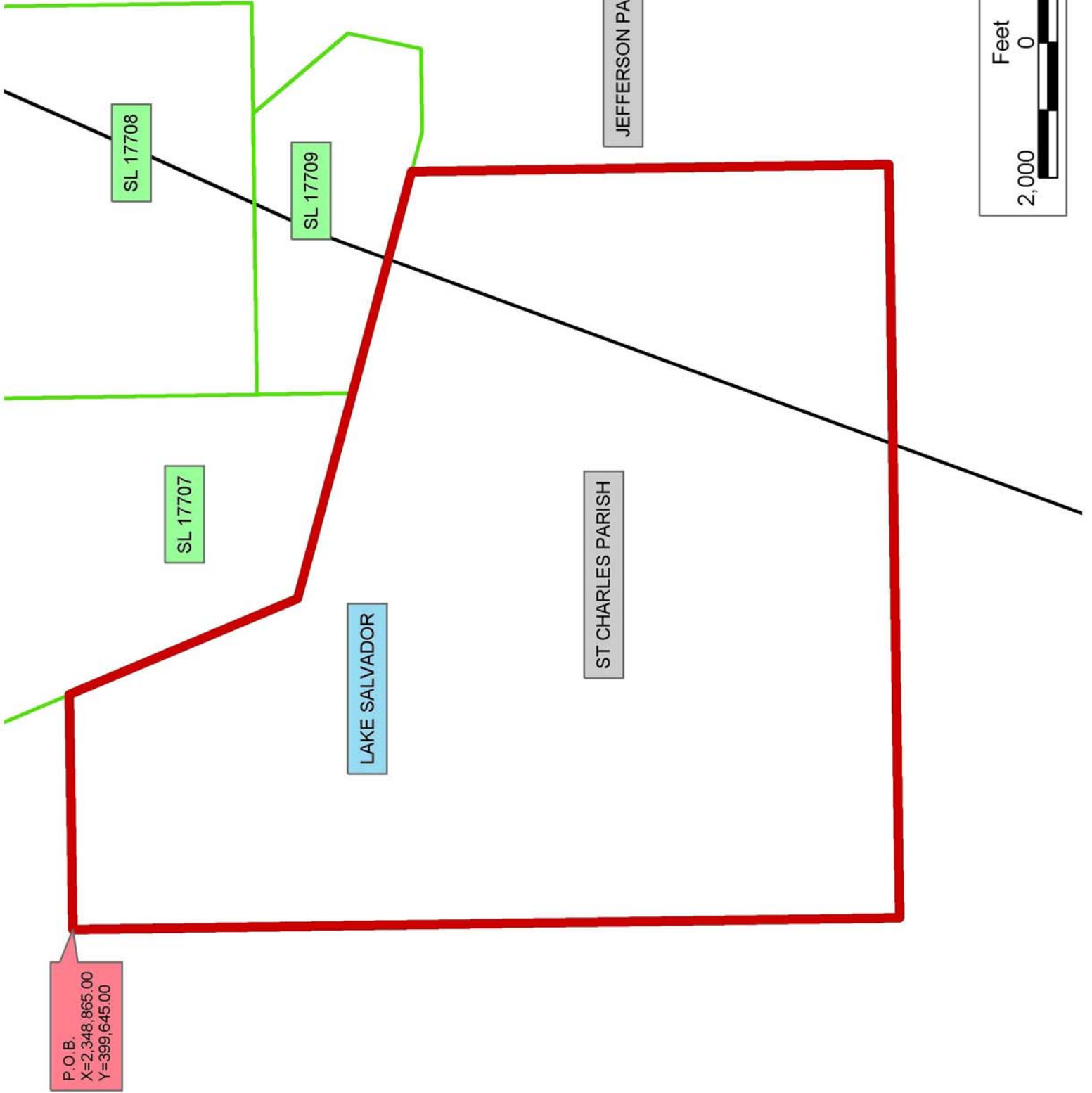


under this lease by the mineral lessee, its agents, successors or assigns, shall not interfere with nor hinder the reasonable surface use by the Department of Natural Resources, its Offices or Commissions, as herein above reserved.

Applicant: Kare-Sue Energy, Inc.

Bidder	Cash Payment	Price/Acre	Rental	Oil	Gas	Other





**TRACT 35698 - Jefferson Parish, Louisiana**

All of the lands now or formerly constituting the beds and bottoms of all water bodies of every nature and description the title of which vests in the State of Louisiana, together with all islands arising therein and other lands formed by accretion or by reliction, where allowed by law, excepting tax adjudicated lands, and not presently under mineral lease on October 8, 2003, situated in Jefferson Parish, Louisiana, and more particularly described as follows: Beginning at a point having Coordinates of X = 2,378,500.00 and Y = 395,160.00; thence South 9,760.00 feet to a point having Coordinates of X = 2,378,500.00 and Y = 385,400.00; thence West 13,600.00 feet to a point having Coordinates of X = 2,364,900.00 and Y = 385,400.00; thence North 2,000.00 feet to a point having Coordinates of X = 2,364,900.00 and Y = 387,400.00; thence West 4,880.00 feet to a point having Coordinates of X = 2,360,020.00 and Y = 387,400.00; thence North 7,065.05 feet to a point on the Southern boundary line of State Lease No. 17709 having Coordinates of X = 2,360,020.00 and Y = 394,465.05; thence along the boundary of said State Lease No. 17709 the following courses: South 74 degrees 13 minutes 07 seconds East 606.85 feet, East 1,230.93 feet and North 12 degrees 44 minutes 08 seconds East 881.69 feet to a point on the Eastern boundary line of said State Lease No. 17709 having Coordinates of X = 2,362,029.28 and Y = 395,160.00; thence East 16,470.72 feet to the point of beginning, containing approximately **2,499.00 acres**, all as more particularly outlined on a plat on file in the Office of Mineral Resources, Department of Natural Resources. All bearings, distances and coordinates are based on Louisiana Coordinate System of 1927, (North or South Zone), where applicable.

NOTE: The above description of the Tract nominated for lease has been provided and corrected, where required, exclusively by the nomination party. Any mineral lease selected from this Tract and awarded by the Louisiana State Mineral Board shall be without warranty of any kind, either express, implied, or statutory, including, but not limited to, the implied warranties of merchantability and fitness for a particular purpose. Should the mineral lease awarded by the Louisiana State Mineral Board be subsequently modified, cancelled or abrogated due to the existence of conflicting leases, operating agreements, private claims or other future obligations or conditions which may affect all or any portion of the leased Tract, it shall not relieve the Lessee of the obligation to pay any bonus due thereon to the Louisiana State Mineral Board, nor shall the Louisiana State Mineral Board be obligated to refund any consideration paid by the Lessor prior to such modification, cancellation, or abrogation, including, but not limited to, bonuses, rentals and royalties.

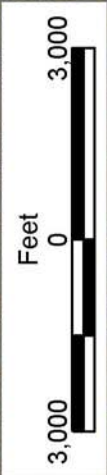
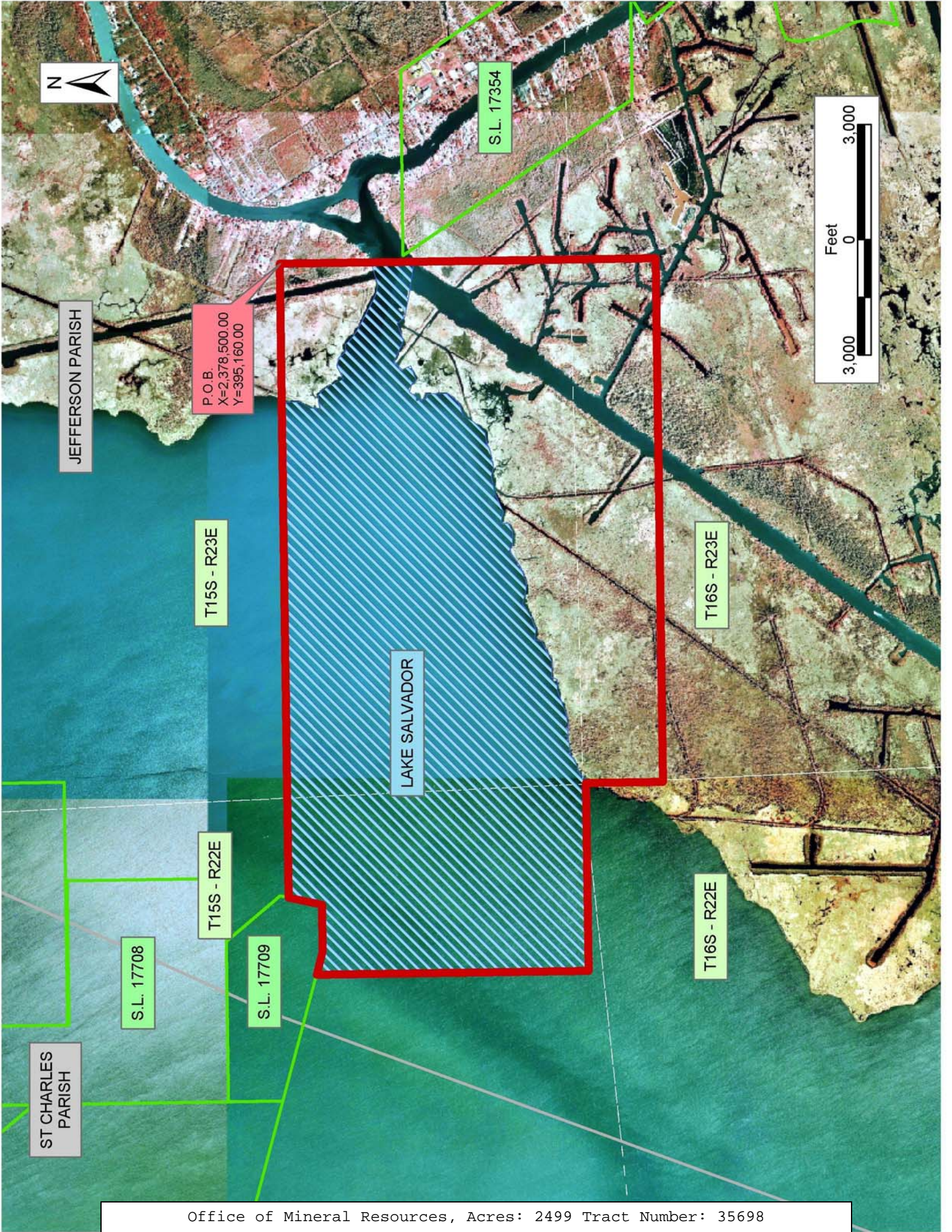
NOTE: The State of Louisiana does hereby reserve, and this lease shall be subject to, the imprescriptible right of surface use in the nature of a servitude in favor of the Department of Natural Resources, including its Offices and Commissions, for the sole purpose of implementing, constructing, servicing and maintaining approved coastal zone management and/or restoration projects. Utilization of any and all rights derived

under this lease by the mineral lessee, its agents, successors or assigns, shall not interfere with nor hinder the reasonable surface use by the Department of Natural Resources, its Offices or Commissions, as herein above reserved.

Applicant: Kare-Sue Energy, Inc.

Bidder	Cash Payment	Price/Acre	Rental	Oil	Gas	Other





P.O.B.  
X=2,378,500.00  
Y=395,160.00

S.L. 17354

JEFFERSON PARISH

T15S - R23E

LAKE SALVADOR

T16S - R23E

T15S - R22E

S.L. 17708

S.L. 17709

T16S - R22E

ST CHARLES PARISH



**TRACT 35699 - Portion of Block 73, Chandeleur Sound Area, St. Bernard Parish, Louisiana**

All of the lands now or formerly constituting the beds and bottoms of all water bodies of every nature and description the title of which vests in the State of Louisiana, together with all islands arising therein and other lands formed by accretion or by reliction, where allowed by law, excepting tax adjudicated lands, and not presently under mineral lease on October 8, 2003, situated in St. Bernard Parish, Louisiana, and more particularly described as follows: Beginning at a point having Coordinates of X = 2,570,560.77 and Y = 386,324.06; thence North 02 degrees 24 minutes 03 seconds West 5,206.76 feet to a point having Coordinates of X = 2,570,342.66 and Y = 391,526.25; thence North 87 degrees 31 minutes 17 seconds East approximately 7,514 feet to a point on the Western boundary line of State Lease No. 4310, as amended; thence along the boundary of said State Lease No. 4310 the following courses: Southerly and Southeasterly to the point of intersection with a line having a bearing of South 86 degrees 56 minutes 56 seconds West; thence South 86 degrees 56 minutes 56 seconds West approximately 10,489 feet to the point of beginning, **LESS AND EXCEPT** any portion of State Lease No. 4310, as amended, that may fall within the above described tract, containing approximately **911 acres**, all as more particularly outlined on a plat on file in the Office of Mineral Resources, Department of Natural Resources. All bearings, distances and coordinates are based on Louisiana Coordinate System of 1927, (North or South Zone), where applicable.

NOTE: The above description of the Tract nominated for lease has been provided and corrected, where required, exclusively by the nomination party. Any mineral lease selected from this Tract and awarded by the Louisiana State Mineral Board shall be without warranty of any kind, either express, implied, or statutory, including, but not limited to, the implied warranties of merchantability and fitness for a particular purpose. Should the mineral lease awarded by the Louisiana State Mineral Board be subsequently modified, cancelled or abrogated due to the existence of conflicting leases, operating agreements, private claims or other future obligations or conditions which may affect all or any portion of the leased Tract, it shall not relieve the Lessee of the obligation to pay any bonus due thereon to the Louisiana State Mineral Board, nor shall the Louisiana State Mineral Board be obligated to refund any consideration paid by the Lessor prior to such modification, cancellation, or abrogation, including, but not limited to, bonuses, rentals and royalties.

NOTE: The State of Louisiana does hereby reserve, and this lease shall be subject to, the imprescriptible right of surface use in the nature of a servitude in favor of the Department of Natural Resources, including its Offices and Commissions, for the sole purpose of implementing, constructing, servicing and maintaining approved coastal zone management and/or restoration projects. Utilization of any and all rights derived under this lease by the mineral lessee, its agents, successors or assigns, shall not interfere with nor hinder the reasonable surface use by the

Department of Natural Resources, its Offices or Commissions, as herein above reserved.

NOTE: The Department of Wildlife and Fisheries has designated certain areas in the coastal waters of the State of Louisiana as Oyster Seed Bed Areas. The exact location of those Seed Bed Areas must be obtained from the Department of Wildlife and Fisheries and any work done under a mineral lease from the State of Louisiana may necessarily be conducted in conformity with the rules and regulations promulgated by the said Department of Wildlife and Fisheries for Oyster Seed Bed Areas.

Applicant: Harold J. Anderson, Inc.

Bidder	Cash Payment	Price/Acre	Rental	Oil	Gas	Other





CHANDELEUR SOUND AREA

SL 4310

BLOCK CS0073

LAKE MACHAIS

ST BERNARD PARISH

LAKE COQUILLE

P.O.B.  
X=2,570,560.77  
Y=386,324.06

LAKE CALEBASSE



**TRACT 35700 - Portion of Blocks 72, and 73, Chandeleur Sound Area, St. Bernard Parish, Louisiana**

All of the lands now or formerly constituting the beds and bottoms of all water bodies of every nature and description the title of which vests in the State of Louisiana, together with all islands arising therein and other lands formed by accretion or by reliction, where allowed by law, excepting tax adjudicated lands, and not presently under mineral lease on October 8, 2003, situated in St. Bernard Parish, Louisiana, and more particularly described as follows: Beginning at a point having Coordinates of X = 2,592,080.88 and Y = 386,925.38; thence South 89 degrees 48 minutes 29 seconds West approximately 8,866 feet to a point on the Eastern boundary line of State Lease No. 4310, as amended; thence along the boundary of said State Lease No. 4310 the following courses: Northeasterly, Easterly and Northwesterly to the point of intersection with a line having a bearing of North 89 degrees 56 minutes 45 seconds East; thence North 89 degrees 56 minutes 45 seconds East approximately 7,524 feet to a point having Coordinates of X = 2,591,425.73 and Y = 391,997.85; thence South 07 degrees 21 minutes 34 seconds East 5,114.60 feet to the point of beginning, **LESS AND EXCEPT** that portion, if any, of said State Lease No. 4310, as amended, that may lie within the above described tract, containing approximately **520 acres**, all as more particularly outlined on a plat on file in the Office of Mineral Resources, Department of Natural Resources. All bearings, distances and coordinates are based on Louisiana Coordinate System of 1927, (North or South Zone), where applicable.

NOTE: The above description of the Tract nominated for lease has been provided and corrected, where required, exclusively by the nomination party. Any mineral lease selected from this Tract and awarded by the Louisiana State Mineral Board shall be without warranty of any kind, either express, implied, or statutory, including, but not limited to, the implied warranties of merchantability and fitness for a particular purpose. Should the mineral lease awarded by the Louisiana State Mineral Board be subsequently modified, cancelled or abrogated due to the existence of conflicting leases, operating agreements, private claims or other future obligations or conditions which may affect all or any portion of the leased Tract, it shall not relieve the Lessee of the obligation to pay any bonus due thereon to the Louisiana State Mineral Board, nor shall the Louisiana State Mineral Board be obligated to refund any consideration paid by the Lessor prior to such modification, cancellation, or abrogation, including, but not limited to, bonuses, rentals and royalties.

NOTE: The State of Louisiana does hereby reserve, and this lease shall be subject to, the imprescriptible right of surface use in the nature of a servitude in favor of the Department of Natural Resources, including its Offices and Commissions, for the sole purpose of implementing, constructing, servicing and maintaining approved coastal zone management and/or restoration projects. Utilization of any and all rights derived under this lease by the mineral lessee, its agents, successors or assigns,

shall not interfere with nor hinder the reasonable surface use by the Department of Natural Resources, its Offices or Commissions, as herein above reserved.

NOTE: The Department of Wildlife and Fisheries has designated certain areas in the coastal waters of the State of Louisiana as Oyster Seed Bed Areas. The exact location of those Seed Bed Areas must be obtained from the Department of Wildlife and Fisheries and any work done under a mineral lease from the State of Louisiana may necessarily be conducted in conformity with the rules and regulations promulgated by the said Department of Wildlife and Fisheries for Oyster Seed Bed Areas.

Applicant: Harold J. Anderson, Inc.

Bidder	Cash Payment	Price/Acre	Rental	Oil	Gas	Other

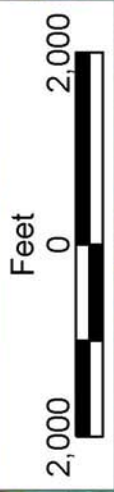




CHANDELEUR SOUND AREA

BLOCK CS0072

P.O.B.  
X=2,592,080.88  
Y=386,925.38



ST BERNARD PARISH

T15S - R17E

SL 15959

T15S - R17E

SL 4310

BLOCK CS0073

LAKE MACHAIS



**TRACT 35701 - Portion of Blocks 60, and 61, Chandeleur Sound Area, Blocks 5, and 6, Main Pass Area, Revised, St. Bernard Parish, Louisiana**

All of the lands now or formerly constituting the beds and bottoms of all water bodies of every nature and description the title of which vests in the State of Louisiana, together with all islands arising therein and other lands formed by accretion or by reliction, where allowed by law, excepting tax adjudicated lands, and not presently under mineral lease on October 8, 2003, situated in St. Bernard Parish, Louisiana, and more particularly described as follows: Beginning at a point within Block 5, Main Pass Area, Revised, said point also being on the Coastline derived from the June 16, 1975 Decree in the United States vs. Louisiana No. 9 Original, having Coordinates of X = 2,762,700.00 and Y = 373,575.54; thence North 7,754.46 feet to a point on the North line of said Block 5, said point also being on the South line of Block 61, Chandeleur Sound Area, having Coordinates of X = 2,762,700.00 and Y = 381,330.00; thence North 7,375.00 feet to a point having Coordinates of X = 2,762,700.00 and Y = 388,705.00; thence East 5,400.00 feet to a point on the East line of said Block 61, said point also being a point on the West line of Block 60, Chandeleur Sound Area, having Coordinates of X = 2,768,100.00 and Y = 388,705.00; thence East 5,246.97 feet to a point on said Coastline having Coordinates of X = 2,773,346.97 and Y = 388,705.00; thence along said Coastline the following courses: South 31 degrees 31 minutes 26 seconds West 1,541.49 feet to a point having Coordinates of X = 2,772,541.00 and Y = 387,391.00; South 28 degrees 59 minutes 47 seconds West 4,006.17 feet to a point having Coordinates of X = 2,770,599.00 and Y = 383,887.00; South 37 degrees 37 minutes 46 second West 2,987.46 feet to a point having Coordinates of X = 2,768,775.00 and Y = 381,521.00; South 30 degrees 13 minutes 33 seconds West 221.05 feet to a point on the South line of said Block 60, said point also being on the North line of Block 6, Main Pass Area, Revised, having Coordinates of X = 2,768,663.72 and Y = 381,330.00; South 30 degrees 13 minutes 33 seconds West 1,119.81 feet to a point on the West line of said Block 6, said point also being on the East line of said Block 5, having Coordinates of X = 2,768,100.00 and Y = 380,362.43; South 30 degrees 13 minutes 33 seconds West 137.07 feet to a point having Coordinates of X = 2,768,031.00 and Y = 380,244.00; South 59 degrees 52 minutes 42 seconds West 1,131.84 feet to a point having Coordinates of X = 2,767,052.00 and Y = 379,676.00; South 29 degrees 12 minutes 23 seconds West 1,319.79 feet to a point having Coordinates of X = 2,766,408.00 and Y = 378,524.00 and South 36 degrees 50 minutes 42 seconds West 6,183.57 feet to the point of beginning, containing **1,949.54 acres**, all as more particularly outlined on a plat on file in the Office of Mineral Resources, Department of Natural Resources. All bearings, distances and coordinates are based on Louisiana Coordinate System of 1927, (North or South Zone), where applicable.

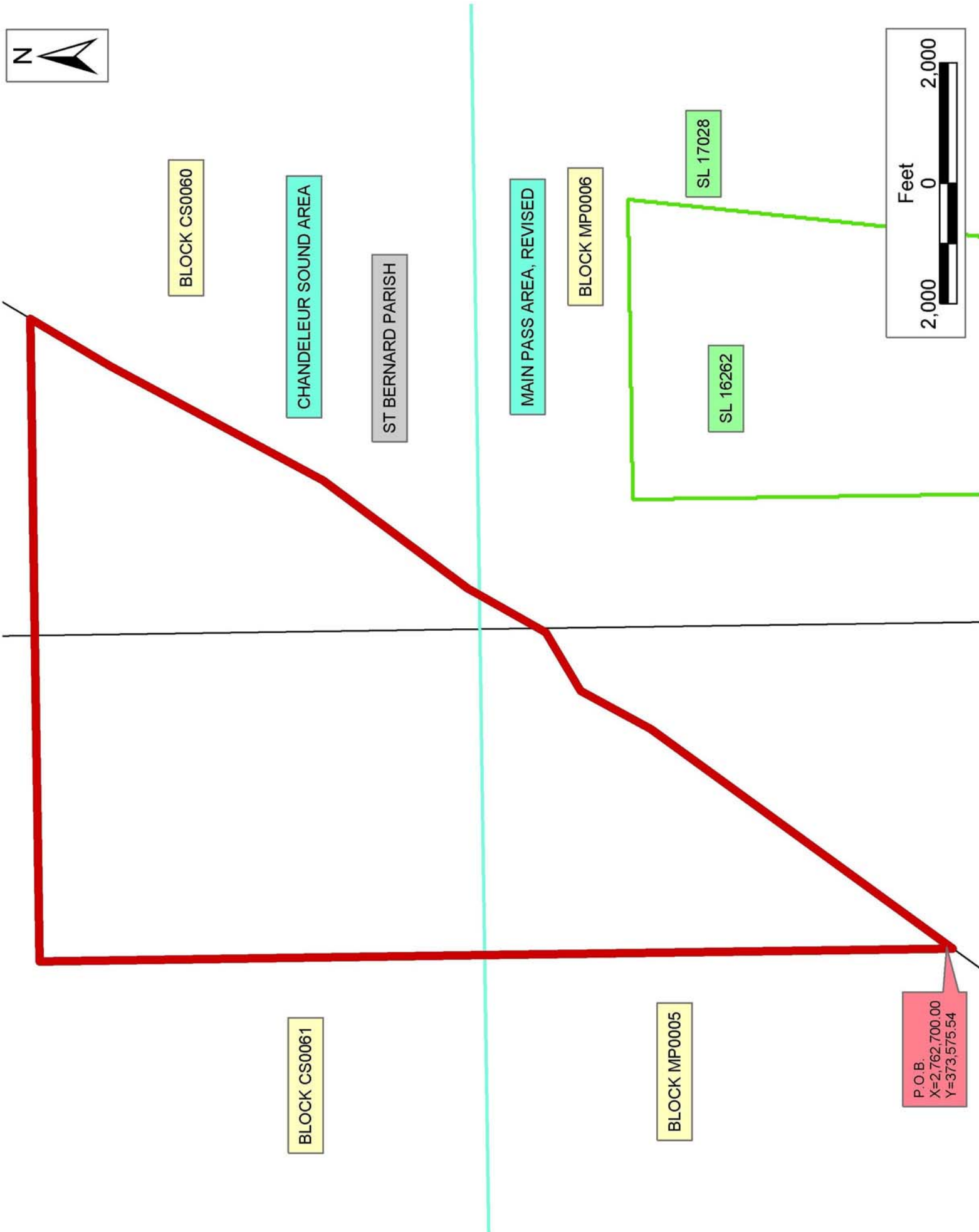
NOTE: The Office of Mineral Resources will require a minimum bonus of \$190 per acre and a minimum royalty of 22%.

NOTE: The above description of the Tract nominated for lease has been provided and corrected, where required, exclusively by the nomination party. Any mineral lease selected from this Tract and awarded by the Louisiana State Mineral Board shall be without warranty of any kind, either express, implied, or statutory, including, but not limited to, the implied warranties of merchantability and fitness for a particular purpose. Should the mineral lease awarded by the Louisiana State Mineral Board be subsequently modified, cancelled or abrogated due to the existence of conflicting leases, operating agreements, private claims or other future obligations or conditions which may affect all or any portion of the leased Tract, it shall not relieve the Lessee of the obligation to pay any bonus due thereon to the Louisiana State Mineral Board, nor shall the Louisiana State Mineral Board be obligated to refund any consideration paid by the Lessor prior to such modification, cancellation, or abrogation, including, but not limited to, bonuses, rentals and royalties.

NOTE: The State of Louisiana does hereby reserve, and this lease shall be subject to, the imprescriptible right of surface use in the nature of a servitude in favor of the Department of Natural Resources, including its Offices and Commissions, for the sole purpose of implementing, constructing, servicing and maintaining approved coastal zone management and/or restoration projects. Utilization of any and all rights derived under this lease by the mineral lessee, its agents, successors or assigns, shall not interfere with nor hinder the reasonable surface use by the Department of Natural Resources, its Offices or Commissions, as herein above reserved.

Applicant: B. T. Exploration, LP

Bidder	Cash Payment	Price/Acre	Rental	Oil	Gas	Other





**TRACT 35702 - St. Bernard Parish, Louisiana**

All of the lands now or formerly constituting the beds and bottoms of all water bodies of every nature and description the title of which vests in the State of Louisiana, together with all islands arising therein and other lands formed by accretion or by reliction, where allowed by law, excepting tax adjudicated lands, and not presently under mineral lease on October 8, 2003, situated in St. Bernard Parish, Louisiana, and more particularly described as follows: Beginning at a point having Coordinates of X = 2,554,670.85 and Y = 380,067.44; thence North 00 degrees 47 minutes 09 seconds West 5,413.73 feet to a point having Coordinates of X = 2,554,596.59 and Y = 385,480.66; thence North 86 degrees 58 minutes 33 seconds East 15,986.44 feet to a point having Coordinates of X = 2,570,560.77 and Y = 386,324.06; thence South 00 degrees 40 minutes 42 seconds East 5,720.93 feet to a point having Coordinates of X = 2,570,628.50 and Y = 380,603.53; thence South 88 degrees 04 minutes 33 seconds West 15,966.65 feet to the point of beginning, containing approximately **1,925 acres**, all as more particularly outlined on a plat on file in the Office of Mineral Resources, Department of Natural Resources. All bearings, distances and coordinates are based on Louisiana Coordinate System of 1927, (North or South Zone), where applicable.

NOTE: The above description of the Tract nominated for lease has been provided and corrected, where required, exclusively by the nomination party. Any mineral lease selected from this Tract and awarded by the Louisiana State Mineral Board shall be without warranty of any kind, either express, implied, or statutory, including, but not limited to, the implied warranties of merchantability and fitness for a particular purpose. Should the mineral lease awarded by the Louisiana State Mineral Board be subsequently modified, cancelled or abrogated due to the existence of conflicting leases, operating agreements, private claims or other future obligations or conditions which may affect all or any portion of the leased Tract, it shall not relieve the Lessee of the obligation to pay any bonus due thereon to the Louisiana State Mineral Board, nor shall the Louisiana State Mineral Board be obligated to refund any consideration paid by the Lessor prior to such modification, cancellation, or abrogation, including, but not limited to, bonuses, rentals and royalties.

NOTE: The State of Louisiana does hereby reserve, and this lease shall be subject to, the imprescriptible right of surface use in the nature of a servitude in favor of the Department of Natural Resources, including its Offices and Commissions, for the sole purpose of implementing, constructing, servicing and maintaining approved coastal zone management and/or restoration projects. Utilization of any and all rights derived under this lease by the mineral lessee, its agents, successors or assigns, shall not interfere with nor hinder the reasonable surface use by the Department of Natural Resources, its Offices or Commissions, as herein above reserved.

NOTE: The Department of Wildlife and Fisheries has designated certain areas in the coastal waters of the State of Louisiana as Oyster Seed Bed Areas. The exact location of those Seed Bed Areas must be obtained from the Department of Wildlife and Fisheries and any work done under a mineral lease from the State of Louisiana may necessarily be conducted in conformity with the rules and regulations promulgated by the said Department of Wildlife and Fisheries for Oyster Seed Bed Areas.

Applicant: Harold J. Anderson, Inc.

Bidder	Cash Payment	Price/Acre	Rental	Oil	Gas	Other





ST BERNARD PARISH

LAKE COQUILLE

P.O.B.  
X=2,554,670.85  
Y=380,067.44