

TRACT 35683 - Cameron Parish, Louisiana

All of the lands now or formerly constituting the beds and bottoms of all water bodies of every nature and description the title of which vests in the State of Louisiana, together with all islands arising therein and other lands formed by accretion or by reliction, where allowed by law, excepting tax adjudicated lands, and not presently under mineral lease on October 8, 2003, situated in Cameron Parish, Louisiana, and more particularly described as follows: Beginning at a point having Coordinates of X = 1,219,994.80 and Y = 466,894.24; thence West 6,196.93 feet to a point on the Texas-Louisiana boundary having Coordinates of X = 1,213,797.87 and Y = 466,894.24; thence on the said Texas-Louisiana boundary the following courses: North 14 degrees 23 minutes 58 seconds East 2,019.19 feet to a point having Coordinates of X = 1,214,300.00 and Y = 468,850.00, North 11 degrees 52 minutes 43 seconds East 1,481.73 feet to a point having Coordinates of X = 1,214,605.00 and Y = 470,300.00 and North 25 degrees 46 minutes 49 seconds East 577.48 feet to the Southwest corner of State Lease No. 17420 having Coordinates of X = 1,214,856.16 and Y = 470,820.00; thence East 5,138.64 feet along the South line of said State Lease No. 17420 to a point having Coordinates of X = 1,219,994.80 and Y = 470,820.00; thence South 3,925.76 feet to the point of beginning, containing approximately **514.29 acres, LESS AND EXCEPT** that portion thereof, if any, located West of the boundary line between the States of Texas and Louisiana as determined by the report of the Special Master and adjudicated by the Supreme Court of the United States in litigation styled **Texas v. Louisiana, et al No. 36 Original**, or as otherwise approved by said court, all as more particularly outlined on a plat on file in the Office of Mineral Resources, Department of Natural Resources. All bearings, distances and coordinates are based on Louisiana Coordinate System of 1927, (North or South Zone), where applicable.

NOTE: The above description of the Tract nominated for lease has been provided and corrected, where required, exclusively by the nomination party. Any mineral lease selected from this Tract and awarded by the Louisiana State Mineral Board shall be without warranty of any kind, either express, implied, or statutory, including, but not limited to, the implied warranties of merchantability and fitness for a particular purpose. Should the mineral lease awarded by the Louisiana State Mineral Board be subsequently modified, cancelled or abrogated due to the existence of conflicting leases, operating agreements, private claims or other future obligations or conditions which may affect all or any portion of the leased Tract, it shall not relieve the Lessee of the obligation to pay any bonus due thereon to the Louisiana State Mineral Board, nor shall the Louisiana State Mineral Board be obligated to refund any consideration paid by the Lessor prior to such modification, cancellation, or abrogation, including, but not limited to, bonuses, rentals and royalties.

NOTE: The State of Louisiana does hereby reserve, and this lease shall be subject to, the imprescriptible right of surface use in the nature of a servitude in favor of the Department of Natural Resources, including its

Offices and Commissions, for the sole purpose of implementing, constructing, servicing and maintaining approved coastal zone management and/or restoration projects. Utilization of any and all rights derived under this lease by the mineral lessee, its agents, successors or assigns, shall not interfere with nor hinder the reasonable surface use by the Department of Natural Resources, its Offices or Commissions, as herein above reserved.

Applicant: Cypress Energy Corporation

Bidder	Cash Payment	Price/Acre	Rental	Oil	Gas	Other



T11S - R13W

S.L. 17420

P.O.B.
X=1,219,994.80
Y=466,894.24

CAMERON PARISH



SABINE LAKE

JEFFERSON COUNTY,
TEXAS

LOUISIANA
TEXAS

TRACT 35684 - Cameron Parish, Louisiana

All of the lands now or formerly constituting the beds and bottoms of all water bodies of every nature and description the title of which vests in the State of Louisiana, together with all islands arising therein and other lands formed by accretion or by reliction, where allowed by law, excepting tax adjudicated lands, and not presently under mineral lease on October 8, 2003, situated in Cameron Parish, Louisiana, and more particularly described as follows: Beginning at a point having Coordinates of X = 1,222,704.54 and Y = 462,089.57; thence West 10,335.62 feet to a point on the Texas-Louisiana boundary having Coordinates of X = 1,212,368.92 and Y = 462,089.57; thence on the said Texas-Louisiana boundary the following courses: North 21 degrees 41 minutes 28 seconds East 1,491.01 feet to a point having Coordinates of X = 1,212,920.00 and Y = 463,475.00, and North 14 degrees 23 minutes 58 seconds East 3,530.14 feet to a point having Coordinates of X = 1,213,797.87 and Y = 466,894.24; thence East 8,906.67 feet to a point having Coordinates of X = 1,222,704.54 and Y = 466,894.24; thence South 4,804.67 feet to the point of beginning, containing approximately **1,053.54 acres**, all as more particularly outlined on a plat on file in the Office of Mineral Resources, Department of Natural Resources. All bearings, distances and coordinates are based on Louisiana Coordinate System of 1927, (North or South Zone), where applicable.

NOTE: The above description of the Tract nominated for lease has been provided and corrected, where required, exclusively by the nomination party. Any mineral lease selected from this Tract and awarded by the Louisiana State Mineral Board shall be without warranty of any kind, either express, implied, or statutory, including, but not limited to, the implied warranties of merchantability and fitness for a particular purpose. Should the mineral lease awarded by the Louisiana State Mineral Board be subsequently modified, cancelled or abrogated due to the existence of conflicting leases, operating agreements, private claims or other future obligations or conditions which may affect all or any portion of the leased Tract, it shall not relieve the Lessee of the obligation to pay any bonus due thereon to the Louisiana State Mineral Board, nor shall the Louisiana State Mineral Board be obligated to refund any consideration paid by the Lessor prior to such modification, cancellation, or abrogation, including, but not limited to, bonuses, rentals and royalties.

NOTE: The State of Louisiana does hereby reserve, and this lease shall be subject to, the imprescriptible right of surface use in the nature of a servitude in favor of the Department of Natural Resources, including its Offices and Commissions, for the sole purpose of implementing, constructing, servicing and maintaining approved coastal zone management and/or restoration projects. Utilization of any and all rights derived under this lease by the mineral lessee, its agents, successors or assigns, shall not interfere with nor hinder the reasonable surface use by the Department of Natural Resources, its Offices or Commissions, as herein above reserved.

Applicant: Cypress Energy Corporation

Bidder	Cash Payment	Price/Acre	Rental	Oil	Gas	Other

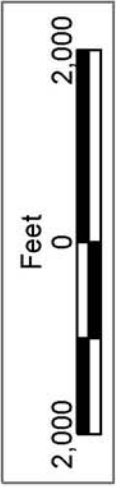


CAMERON PARISH

SABINE LAKE

JEFFERSON COUNTY,
TEXAS

P.O.B.
X=1,222,704.54
Y=462,089.57



TEXAS
LOUISIANA

TRACT 35685 - Cameron Parish, Louisiana

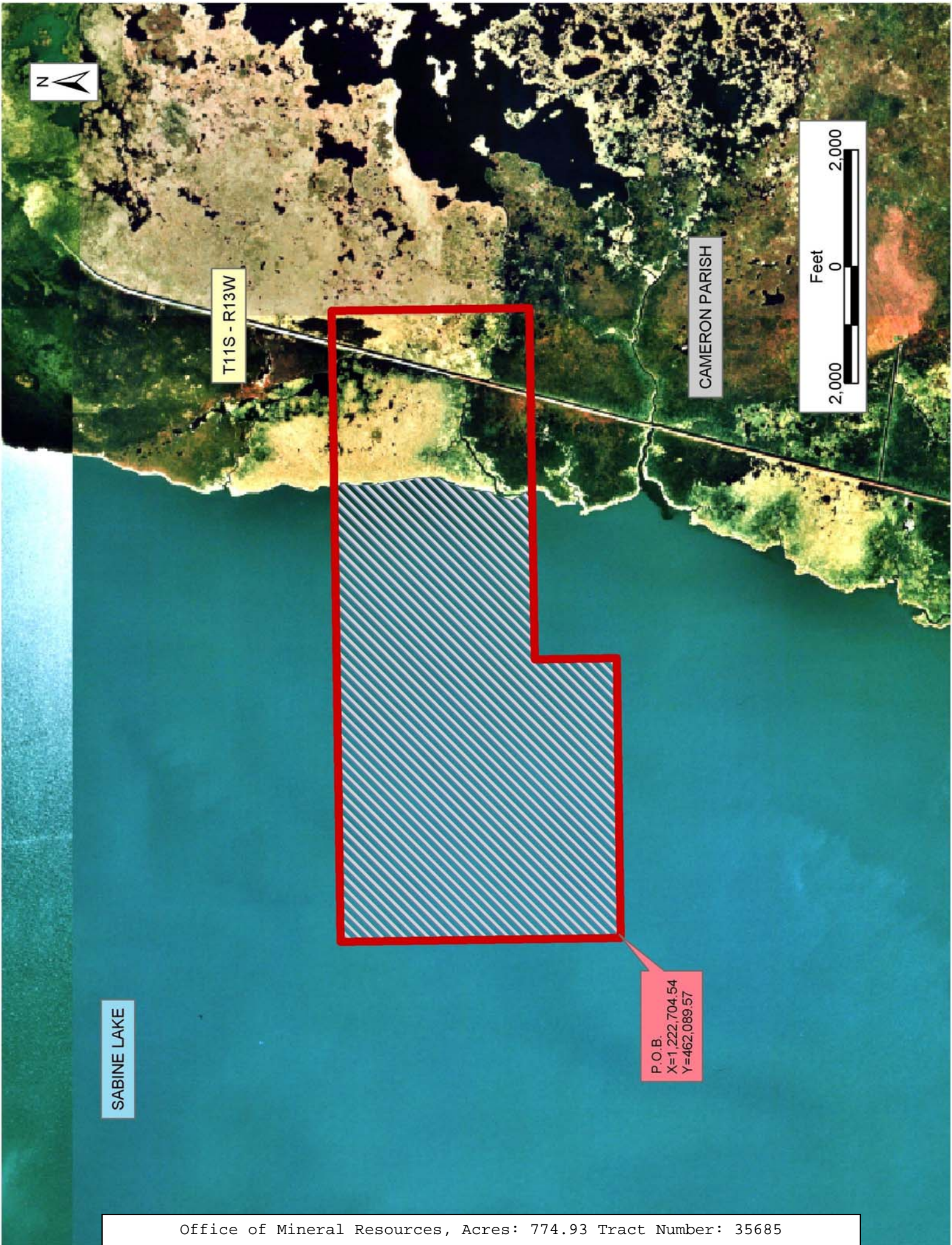
All of the lands now or formerly constituting the beds and bottoms of all water bodies of every nature and description the title of which vests in the State of Louisiana, together with all islands arising therein and other lands formed by accretion or by reliction, where allowed by law, excepting tax adjudicated lands, and not presently under mineral lease on October 8, 2003, situated in Cameron Parish, Louisiana, and more particularly described as follows: Beginning at a point having Coordinates of X = 1,222,704.54 and Y = 462,089.57; thence North 4,804.67 feet to a point having Coordinates of X = 1,222,704.54 and Y = 466,894.24; thence East 10,823.05 feet to a point having Coordinates of X = 1,233,527.59 and Y = 466,894.24; thence South 3,394.24 feet to a point having Coordinates of X = 1,233,527.59 and Y = 463,500.00; thence West 6,027.59 feet and South 1,410.43 feet to a point having Coordinates of X = 1,227,500.00 and Y = 462,089.57; thence West 4,795.46 feet to the point of beginning, containing approximately **774.93 acres**, all as more particularly outlined on a plat on file in the Office of Mineral Resources, Department of Natural Resources. All bearings, distances and coordinates are based on Louisiana Coordinate System of 1927, (North or South Zone), where applicable.

NOTE: The above description of the Tract nominated for lease has been provided and corrected, where required, exclusively by the nomination party. Any mineral lease selected from this Tract and awarded by the Louisiana State Mineral Board shall be without warranty of any kind, either express, implied, or statutory, including, but not limited to, the implied warranties of merchantability and fitness for a particular purpose. Should the mineral lease awarded by the Louisiana State Mineral Board be subsequently modified, cancelled or abrogated due to the existence of conflicting leases, operating agreements, private claims or other future obligations or conditions which may affect all or any portion of the leased Tract, it shall not relieve the Lessee of the obligation to pay any bonus due thereon to the Louisiana State Mineral Board, nor shall the Louisiana State Mineral Board be obligated to refund any consideration paid by the Lessor prior to such modification, cancellation, or abrogation, including, but not limited to, bonuses, rentals and royalties.

NOTE: The State of Louisiana does hereby reserve, and this lease shall be subject to, the imprescriptible right of surface use in the nature of a servitude in favor of the Department of Natural Resources, including its Offices and Commissions, for the sole purpose of implementing, constructing, servicing and maintaining approved coastal zone management and/or restoration projects. Utilization of any and all rights derived under this lease by the mineral lessee, its agents, successors or assigns, shall not interfere with nor hinder the reasonable surface use by the Department of Natural Resources, its Offices or Commissions, as herein above reserved.

Applicant: Cypress Energy Corporation

Bidder	Cash Payment	Price/Acre	Rental	Oil	Gas	Other



T11S - R13W

CAMERON PARISH



SABINE LAKE

P.O.B.
X=1,222,704.54
Y=462,089.57

TRACT 35686 - Cameron Parish, Louisiana

All of the lands now or formerly constituting the beds and bottoms of all water bodies of every nature and description the title of which vests in the State of Louisiana, together with all islands arising therein and other lands formed by accretion or by reliction, where allowed by law, excepting tax adjudicated lands, and not presently under mineral lease on October 8, 2003, situated in Cameron Parish, Louisiana, and more particularly described as follows: Beginning at a point having Coordinates of X = 1,219,470.33 and Y = 458,500.00; thence West 8,999.82 feet to a point on the Texas-Louisiana boundary; thence along the Texas-Louisiana boundary the following courses: North 31 degrees 07 minutes 12 seconds East 2,669.12 feet and North 21 degrees 41 minutes 28 seconds East 1,403.99 feet to a point having Coordinates of X = 1,212,368.92 and Y = 462,089.57; thence East 7,101.41 feet to a point having Coordinates of X = 1,219,470.33 and Y = 462,089.57; thence South 3,589.57 feet to the point of beginning, containing approximately **656.37 acres, LESS AND EXCEPT** that portion thereof, if any, located West of the boundary line between the States of Texas and Louisiana as determined by the report of the Special Master and adjudicated by the Supreme Court of the United States in litigation styled **Texas v. Louisiana, et al No. 36 Original**, or as otherwise approved by said court, all as more particularly outlined on a plat on file in the Office of Mineral Resources, Department of Natural Resources. All bearings, distances and coordinates are based on Louisiana Coordinate System of 1927, (North or South Zone), where applicable.

NOTE: The above description of the Tract nominated for lease has been provided and corrected, where required, exclusively by the nomination party. Any mineral lease selected from this Tract and awarded by the Louisiana State Mineral Board shall be without warranty of any kind, either express, implied, or statutory, including, but not limited to, the implied warranties of merchantability and fitness for a particular purpose. Should the mineral lease awarded by the Louisiana State Mineral Board be subsequently modified, cancelled or abrogated due to the existence of conflicting leases, operating agreements, private claims or other future obligations or conditions which may affect all or any portion of the leased Tract, it shall not relieve the Lessee of the obligation to pay any bonus due thereon to the Louisiana State Mineral Board, nor shall the Louisiana State Mineral Board be obligated to refund any consideration paid by the Lessor prior to such modification, cancellation, or abrogation, including, but not limited to, bonuses, rentals and royalties.

NOTE: The State of Louisiana does hereby reserve, and this lease shall be subject to, the imprescriptible right of surface use in the nature of a servitude in favor of the Department of Natural Resources, including its Offices and Commissions, for the sole purpose of implementing, constructing, servicing and maintaining approved coastal zone management and/or restoration projects. Utilization of any and all rights derived under this lease by the mineral lessee, its agents, successors or assigns, shall not interfere with nor hinder the reasonable surface use by the

Department of Natural Resources, its Offices or Commissions, as herein above reserved.

Applicant: Cypress Energy Corporation

Bidder	Cash Payment	Price/Acre	Rental	Oil	Gas	Other

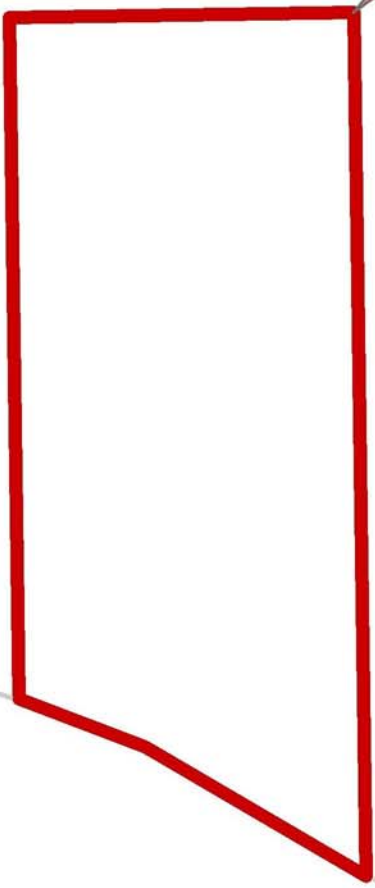


CAMERON PARISH

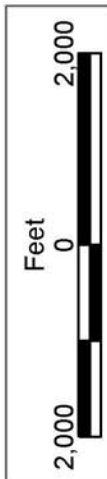
JEFFERSON PARISH,
TEXAS

SABINE LAKE

P.O.B.
X=1,219,470.33
Y=458,500.00



TEXAS
LOUISIANA



TRACT 35687 - Cameron Parish, Louisiana

All of the lands now or formerly constituting the beds and bottoms of all water bodies of every nature and description the title of which vests in the State of Louisiana, together with all islands arising therein and other lands formed by accretion or by reliction, where allowed by law, excepting tax adjudicated lands, and not presently under mineral lease on October 8, 2003, situated in Cameron Parish, Louisiana, and more particularly described as follows: Beginning at a point having Coordinates of X = 1,219,470.33 and Y = 458,500.00; thence North 3,589.57 feet to a point having Coordinates of X = 1,219,470.33 and Y = 462,089.57; thence East 8,029.67 feet to a point having Coordinates of X = 1,227,500.00 and Y = 462,089.57; thence South 3,589.57 feet to a point having Coordinates of X = 1,227,500.00 and Y = 458,500.00; thence West 8,029.67 feet to the point of beginning, containing approximately **661.69 acres**, all as more particularly outlined on a plat on file in the Office of Mineral Resources, Department of Natural Resources. All bearings, distances and coordinates are based on Louisiana Coordinate System of 1927, (North or South Zone), where applicable.

NOTE: The above description of the Tract nominated for lease has been provided and corrected, where required, exclusively by the nomination party. Any mineral lease selected from this Tract and awarded by the Louisiana State Mineral Board shall be without warranty of any kind, either express, implied, or statutory, including, but not limited to, the implied warranties of merchantability and fitness for a particular purpose. Should the mineral lease awarded by the Louisiana State Mineral Board be subsequently modified, cancelled or abrogated due to the existence of conflicting leases, operating agreements, private claims or other future obligations or conditions which may affect all or any portion of the leased Tract, it shall not relieve the Lessee of the obligation to pay any bonus due thereon to the Louisiana State Mineral Board, nor shall the Louisiana State Mineral Board be obligated to refund any consideration paid by the Lessor prior to such modification, cancellation, or abrogation, including, but not limited to, bonuses, rentals and royalties.

NOTE: The State of Louisiana does hereby reserve, and this lease shall be subject to, the imprescriptible right of surface use in the nature of a servitude in favor of the Department of Natural Resources, including its Offices and Commissions, for the sole purpose of implementing, constructing, servicing and maintaining approved coastal zone management and/or restoration projects. Utilization of any and all rights derived under this lease by the mineral lessee, its agents, successors or assigns, shall not interfere with nor hinder the reasonable surface use by the Department of Natural Resources, its Offices or Commissions, as herein above reserved.

Applicant: Cypress Energy Corporation

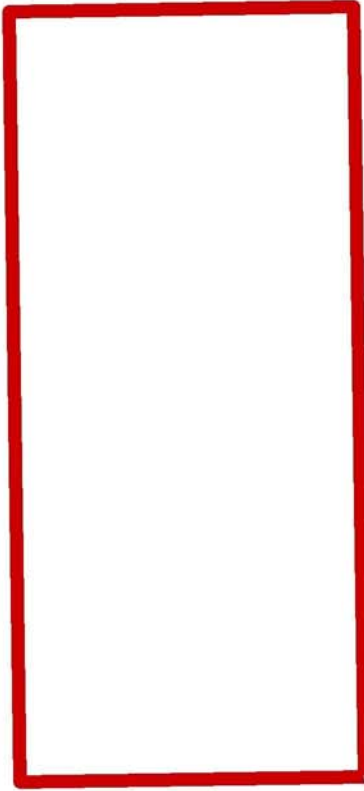
Bidder	Cash Payment	Price/Acre	Rental	Oil	Gas	Other



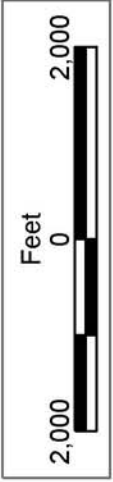
CAMERON PARISH

SABINE LAKE

T11S - R13W



P.O.B.
X=1,219,470.33
Y=458,500.00



TRACT 35688 - St. Martin and St. Mary Parishes, Louisiana

All of the lands now or formerly constituting the beds and bottoms of all water bodies of every nature and description the title of which vests in the State of Louisiana, together with all islands arising therein and other lands formed by accretion or by reliction, where allowed by law, excepting tax adjudicated lands, and not presently under mineral lease on October 8, 2003, situated in St. Martin and St. Mary Parishes, Louisiana, and more particularly described as follows: Beginning at the Southwest corner of State Lease No. 5706, as amended having Coordinates of X = 1,970,934.26 and Y = 435,671.74; thence West 1,834.26 feet to a point on the East boundary of State Lease No. 17838 having Coordinates of X = 1,969,100.00 and Y = 435,671.74; thence along the boundary of said State Lease No. 17838 the following courses: North 4,080.23 feet, North 38 degrees 53 minutes 35 seconds West 481.34 feet, North 33 degrees 46 minutes 55 seconds West 614.72 feet, North 38 degrees 32 minutes 25 seconds West 359.48 feet, North 41 degrees 02 minutes 56 seconds West 277.54 feet, North 41 degrees 58 minutes 06 seconds West 262.21 feet, North 33 degrees 40 minutes 12 seconds West 273.53 feet, North 38 degrees 56 minutes 24 seconds West 392.76 feet, North 32 degrees 33 minutes 33 seconds West 375.51 feet, North 36 degrees 02 minutes 27 seconds West 498.81 feet, North 32 degrees 25 minutes 30 seconds West 519.79 feet, North 31 degrees 04 minutes 44 seconds West 444.89 feet, North 39 degrees 29 minutes 06 seconds West 308.39 feet, North 35 degrees 38 minutes 24 seconds West 203.80 feet, North 35 degrees 44 minutes 37 seconds West 275.06 feet, North 38 degrees 00 minutes 02 seconds West 375.04 feet, and North 41 degrees 50 minutes 35 seconds West 532.55 feet to the Southeast corner of State Lease No. 17839 having Coordinates of X = 1,965,410.26 and Y = 444,714.89; thence North 858.22 feet on the East line of said State Lease No. 17839 to it's Northeast corner having Coordinates of X = 1,965,410.26 and Y = 445,573.11; thence North 426.89 feet to a point having Coordinates of X = 1,965,410.26 and Y = 446,000.00; thence East 15,979.74 feet to a point having Coordinates of X = 1,981,390.00 and Y = 446,000.00; thence South 5,576.26 feet to a point having Coordinates of X = 1,981,390.00 and Y = 440,423.74; thence West 500.00 feet to the Northeast corner of said State Lease No. 5706 having Coordinates of X = 1,980,890.00 and Y = 440,423.74; thence along the boundary of said State Lease No. 5706 the following courses: West 7,557.00 feet, South 1,200.00 feet, West 2,398.74 feet, and South 3,552.00 feet to the point of beginning, **LESS AND EXCEPT** any portion of the Attakapas Island Wildlife Management Area that may lie within the above described tract, containing approximately **125 acres**, all as more particularly outlined on a plat on file in the Office of Mineral Resources, Department of Natural Resources. All bearings, distances and coordinates are based on Louisiana Coordinate System of 1927, (North or South Zone), where applicable.

NOTE: The above description of the Tract nominated for lease has been provided and corrected, where required, exclusively by the nomination party. Any mineral lease selected from this Tract and awarded by the Louisiana State Mineral Board shall be without warranty of any kind,

either express, implied, or statutory, including, but not limited to, the implied warranties of merchantability and fitness for a particular purpose. Should the mineral lease awarded by the Louisiana State Mineral Board be subsequently modified, cancelled or abrogated due to the existence of conflicting leases, operating agreements, private claims or other future obligations or conditions which may affect all or any portion of the leased Tract, it shall not relieve the Lessee of the obligation to pay any bonus due thereon to the Louisiana State Mineral Board, nor shall the Louisiana State Mineral Board be obligated to refund any consideration paid by the Lessor prior to such modification, cancellation, or abrogation, including, but not limited to, bonuses, rentals and royalties.

NOTE: The State of Louisiana does hereby reserve, and this lease shall be subject to, the imprescriptible right of surface use in the nature of a servitude in favor of the Department of Natural Resources, including its Offices and Commissions, for the sole purpose of implementing, constructing, servicing and maintaining approved coastal zone management and/or restoration projects. Utilization of any and all rights derived under this lease by the mineral lessee, its agents, successors or assigns, shall not interfere with nor hinder the reasonable surface use by the Department of Natural Resources, its Offices or Commissions, as herein above reserved.

Applicant: Pinnacle Resources, Inc.

Bidder	Cash Payment	Price/Acre	Rental	Oil	Gas	Other



ST MARTIN PARISH

ST MARY PARISH

ATTAKAPAS ISLAND WMA

GRAND LAKE

SL 5706

P.O.B.
X=1,970,934.26
Y=435,671.74

T13S - R10E

T14S - R10E

TRACT 35689 - St. Martin and St. Mary Parishes, Louisiana

All of the lands now or formerly constituting the beds and bottoms of all water bodies of every nature and description the title of which vests in the State of Louisiana, together with all islands arising therein and other lands formed by accretion or by reliction, where allowed by law, excepting tax adjudicated lands, and not presently under mineral lease on October 8, 2003, situated in St. Martin and St. Mary Parishes, Louisiana, and more particularly described as follows: Beginning at the Southwest corner of State Lease No. 5706, as amended having Coordinates of X = 1,970,934.26 and Y = 435,671.74; thence along the boundary of said State Lease No. 5706 the following courses: East 3,685.74 feet, North 792.00 feet, East 1,320.00 feet, North 1,320.00 feet, East 4,950.00 feet, and North 2,640.00 feet to its Northeast corner having Coordinates of X = 1,980,890.00 and Y = 440,423.74; thence East 500.00 feet to a point having Coordinates of X = 1,981,390.00 and Y = 440,423.74; thence South 10,333.74 feet to a point having Coordinates of X = 1,981,390.00 and Y = 430,090.00; thence West 15,970.00 feet to a point having Coordinates of X = 1,965,420.00 and Y = 430,090.00; thence North 5,370.00 feet to a point on the South line of State Lease No. 17838 having Coordinates of X = 1,965,420.00 and Y = 435,460.00; thence along the boundary of said State Lease No. 17838 the following courses: East 3,680.00 feet and North 211.74 feet to a point having Coordinates of X = 1,969,100.00 and Y = 435,671.74; thence East 1,834.26 feet to the point of beginning, **LESS AND EXCEPT** any portion of the Attakapas Island Wildlife Management Area that may lie within the above described tract, containing approximately **688 acres**, all as more particularly outlined on a plat on file in the Office of Mineral Resources, Department of Natural Resources. All bearings, distances and coordinates are based on Louisiana Coordinate System of 1927, (North or South Zone), where applicable.

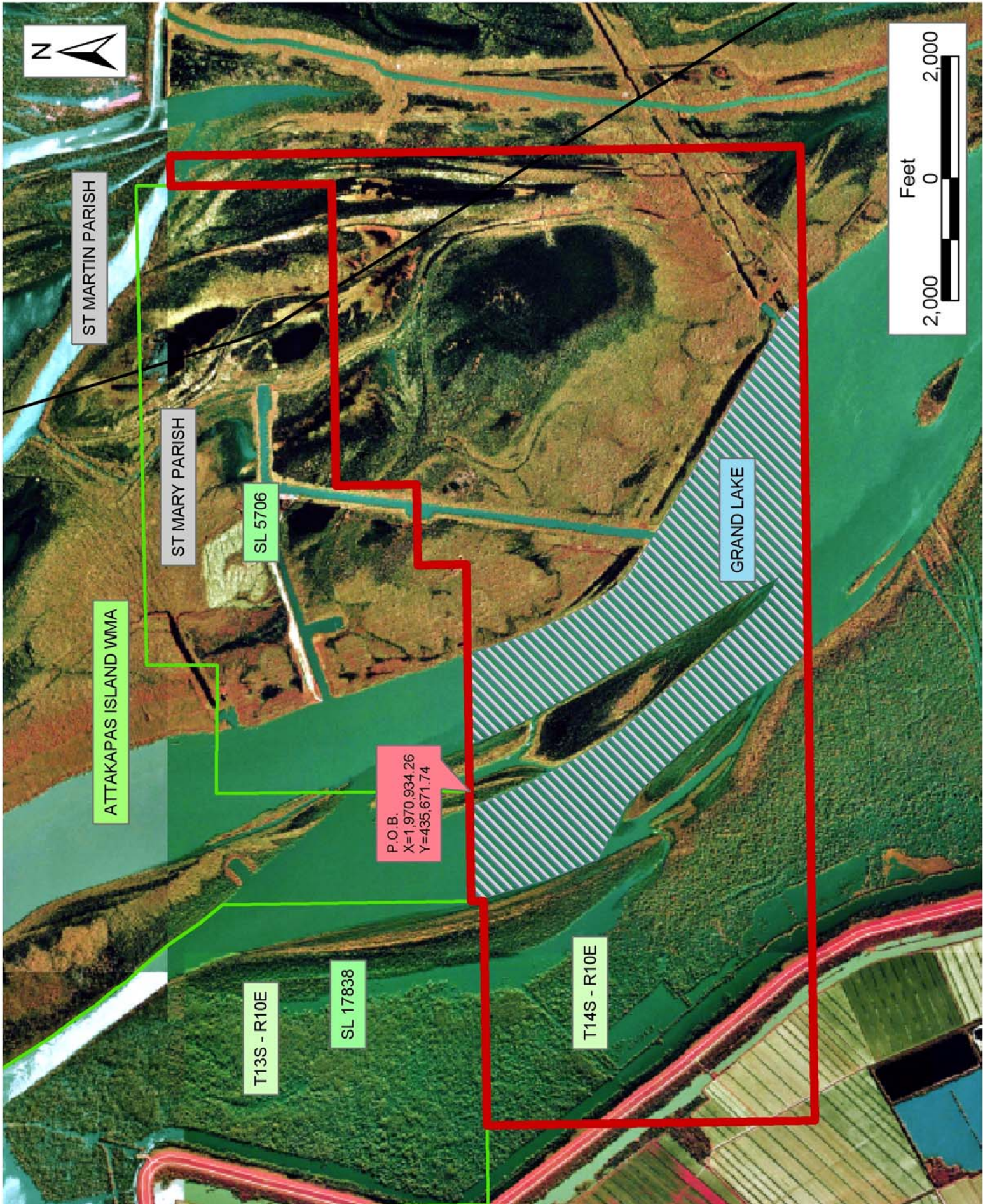
NOTE: The above description of the Tract nominated for lease has been provided and corrected, where required, exclusively by the nomination party. Any mineral lease selected from this Tract and awarded by the Louisiana State Mineral Board shall be without warranty of any kind, either express, implied, or statutory, including, but not limited to, the implied warranties of merchantability and fitness for a particular purpose. Should the mineral lease awarded by the Louisiana State Mineral Board be subsequently modified, cancelled or abrogated due to the existence of conflicting leases, operating agreements, private claims or other future obligations or conditions which may affect all or any portion of the leased Tract, it shall not relieve the Lessee of the obligation to pay any bonus due thereon to the Louisiana State Mineral Board, nor shall the Louisiana State Mineral Board be obligated to refund any consideration paid by the Lessor prior to such modification, cancellation, or abrogation, including, but not limited to, bonuses, rentals and royalties.

NOTE: The State of Louisiana does hereby reserve, and this lease shall be subject to, the imprescriptible right of surface use in the nature of a servitude in favor of the Department of Natural Resources, including its

Offices and Commissions, for the sole purpose of implementing, constructing, servicing and maintaining approved coastal zone management and/or restoration projects. Utilization of any and all rights derived under this lease by the mineral lessee, its agents, successors or assigns, shall not interfere with nor hinder the reasonable surface use by the Department of Natural Resources, its Offices or Commissions, as herein above reserved.

Applicant: Pinnacle Resources, Inc.

Bidder	Cash Payment	Price/Acre	Rental	Oil	Gas	Other



TRACT 35690 - Jefferson and St. Charles Parishes, Louisiana

All of the lands now or formerly constituting the beds and bottoms of all water bodies of every nature and description the title of which vests in the State of Louisiana, together with all islands arising therein and other lands formed by accretion or by reliction, where allowed by law, excepting tax adjudicated lands, and not presently under mineral lease on October 8, 2003, situated in Jefferson and St. Charles Parishes, Louisiana, and more particularly described as follows: Beginning at a point having Coordinates of X = 2,348,865.00 and Y = 399,645.00; thence North 10,355.00 feet to a point having Coordinates of X = 2,348,865.00 and Y = 410,000.00; thence East 3,435.00 feet to a point on the West line of State Lease No. 16998 having Coordinates of X = 2,352,300.00 and Y = 410,000.00; thence along the boundary of said State Lease No. 16998 the following courses: South 2,000.00 feet, North 72 degrees 52 minutes 19 seconds East 10,309.79 feet and North 00 degrees 09 minutes 54 seconds East 1,399.69 feet to a point on the East line of said State Lease No. 16998 having Coordinates of X = 2,362,156.57 and Y = 412,436.00; thence East 5,188.43 feet to a point having Coordinates of X = 2,367,345.00 and Y = 412,436.00; thence South 7,859.70 feet to a point having Coordinates of X = 2,367,345.00 and Y = 404,576.30; thence West 4,079.92 feet to a point on the Eastern boundary of State Lease No. 17140 having Coordinates of X = 2,363,265.08 and Y = 404,576.30; thence North 44 degrees 00 minutes 03 seconds West 415.47 feet along the Eastern boundary of said State Lease No. 17140 to its Northeast corner, also being the most Easterly Northeast corner of State Lease No. 17708 having Coordinates of X = 2,362,976.47 and Y = 404,875.16; thence along the boundary of said State Lease No. 17708 the following courses: North 42 degrees 42 minutes 15 seconds West 921.80 feet, North 847.44 feet, West 5,601.29 feet and South 4,536.76 feet to a point on the West line of said State Lease No. 17708, also being the most Easterly Northeast corner of State Lease No. 17707 having Coordinates of X = 2,356,750.00 and Y = 401,863.24; thence along the boundary of said State Lease No. 17707 the following courses: North 39 degrees 25 minutes 09 seconds West 4,513.47 feet, North 78 degrees 59 minutes 09 seconds West 4,255.38 feet and South 22 degrees 02 minutes 21 seconds East 7,031.83 feet to a point on the West line of said State Lease No. 17707 having Coordinates of X = 2,352,345.61 and Y = 399,645.00; thence West 3,480.61 feet to the point of beginning, containing approximately **2,481.01 acres**, all as more particularly outlined on a plat on file in the Office of Mineral Resources, Department of Natural Resources. All bearings, distances and coordinates are based on Louisiana Coordinate System of 1927, (North or South Zone), where applicable.

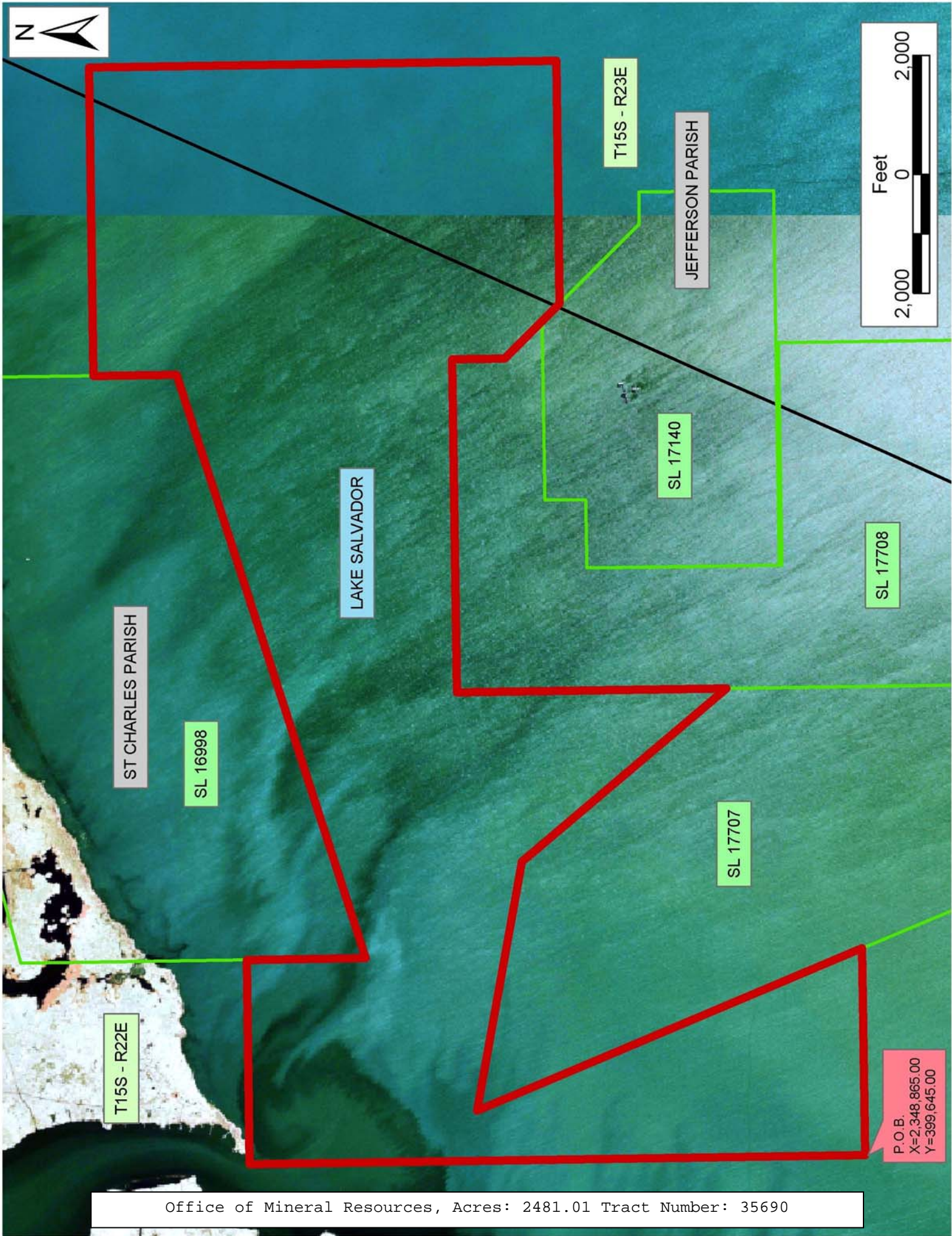
NOTE: The above description of the Tract nominated for lease has been provided and corrected, where required, exclusively by the nomination party. Any mineral lease selected from this Tract and awarded by the Louisiana State Mineral Board shall be without warranty of any kind, either express, implied, or statutory, including, but not limited to, the implied warranties of merchantability and fitness for a particular purpose. Should the mineral lease awarded by the Louisiana State Mineral

Board be subsequently modified, cancelled or abrogated due to the existence of conflicting leases, operating agreements, private claims or other future obligations or conditions which may affect all or any portion of the leased Tract, it shall not relieve the Lessee of the obligation to pay any bonus due thereon to the Louisiana State Mineral Board, nor shall the Louisiana State Mineral Board be obligated to refund any consideration paid by the Lessor prior to such modification, cancellation, or abrogation, including, but not limited to, bonuses, rentals and royalties.

NOTE: The State of Louisiana does hereby reserve, and this lease shall be subject to, the imprescriptible right of surface use in the nature of a servitude in favor of the Department of Natural Resources, including its Offices and Commissions, for the sole purpose of implementing, constructing, servicing and maintaining approved coastal zone management and/or restoration projects. Utilization of any and all rights derived under this lease by the mineral lessee, its agents, successors or assigns, shall not interfere with nor hinder the reasonable surface use by the Department of Natural Resources, its Offices or Commissions, as herein above reserved.

Applicant: Kare-Sue Energy, Inc.

Bidder	Cash Payment	Price/Acre	Rental	Oil	Gas	Other



ST CHARLES PARISH

LAKE SALVADOR

JEFFERSON PARISH

SL 16998

SL 17140

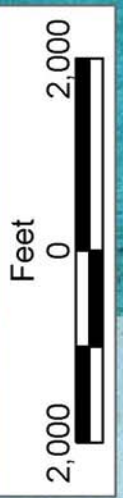
SL 17708

SL 17707

T15S - R22E

T15S - R23E

P.O.B.
X=2,348,865.00
Y=399,645.00



TRACT 35691 - St. Bernard Parish, Louisiana

All of the lands now or formerly constituting the beds and bottoms of all water bodies of every nature and description the title of which vests in the State of Louisiana, together with all islands arising therein and other lands formed by accretion or by reliction, where allowed by law, excepting tax adjudicated lands, and not presently under mineral lease on October 8, 2003, situated in St. Bernard Parish, Louisiana, and more particularly described as follows: Beginning at a point having Coordinates of X = 2,570,060.31 and Y = 396,759.91; thence North 02 degrees 12 minutes 18 seconds West 5,272.79 feet to a point having Coordinates of X = 2,569,857.45 and Y = 402,028.80; thence North 88 degrees 28 minutes 19 seconds East 10,664.36 feet to a point having Coordinates of X = 2,580,518.02 and Y = 402,313.19; thence South 03 degrees 13 minutes 01 seconds East approximately 535 feet to a point on the Northern boundary line of State Lease No. 4909, as amended; thence along the boundary of said State Lease No. 4909 the following courses: Southwesterly and Southerly to the point of intersection with a line having a bearing of South 87 degrees 19 minutes 56 seconds West; thence South 87 degrees 19 minutes 56 seconds West approximately 6,095 feet to the point of beginning, **LESS AND EXCEPT** that portion, if any, of said State Lease No. 4909, as amended, that may lie within the above described tract, containing approximately **225 acres**, all as more particularly outlined on a plat on file in the Office of Mineral Resources, Department of Natural Resources. All bearings, distances and coordinates are based on Louisiana Coordinate System of 1927, (North or South Zone), where applicable.

NOTE: The above description of the Tract nominated for lease has been provided and corrected, where required, exclusively by the nomination party. Any mineral lease selected from this Tract and awarded by the Louisiana State Mineral Board shall be without warranty of any kind, either express, implied, or statutory, including, but not limited to, the implied warranties of merchantability and fitness for a particular purpose. Should the mineral lease awarded by the Louisiana State Mineral Board be subsequently modified, cancelled or abrogated due to the existence of conflicting leases, operating agreements, private claims or other future obligations or conditions which may affect all or any portion of the leased Tract, it shall not relieve the Lessee of the obligation to pay any bonus due thereon to the Louisiana State Mineral Board, nor shall the Louisiana State Mineral Board be obligated to refund any consideration paid by the Lessor prior to such modification, cancellation, or abrogation, including, but not limited to, bonuses, rentals and royalties.

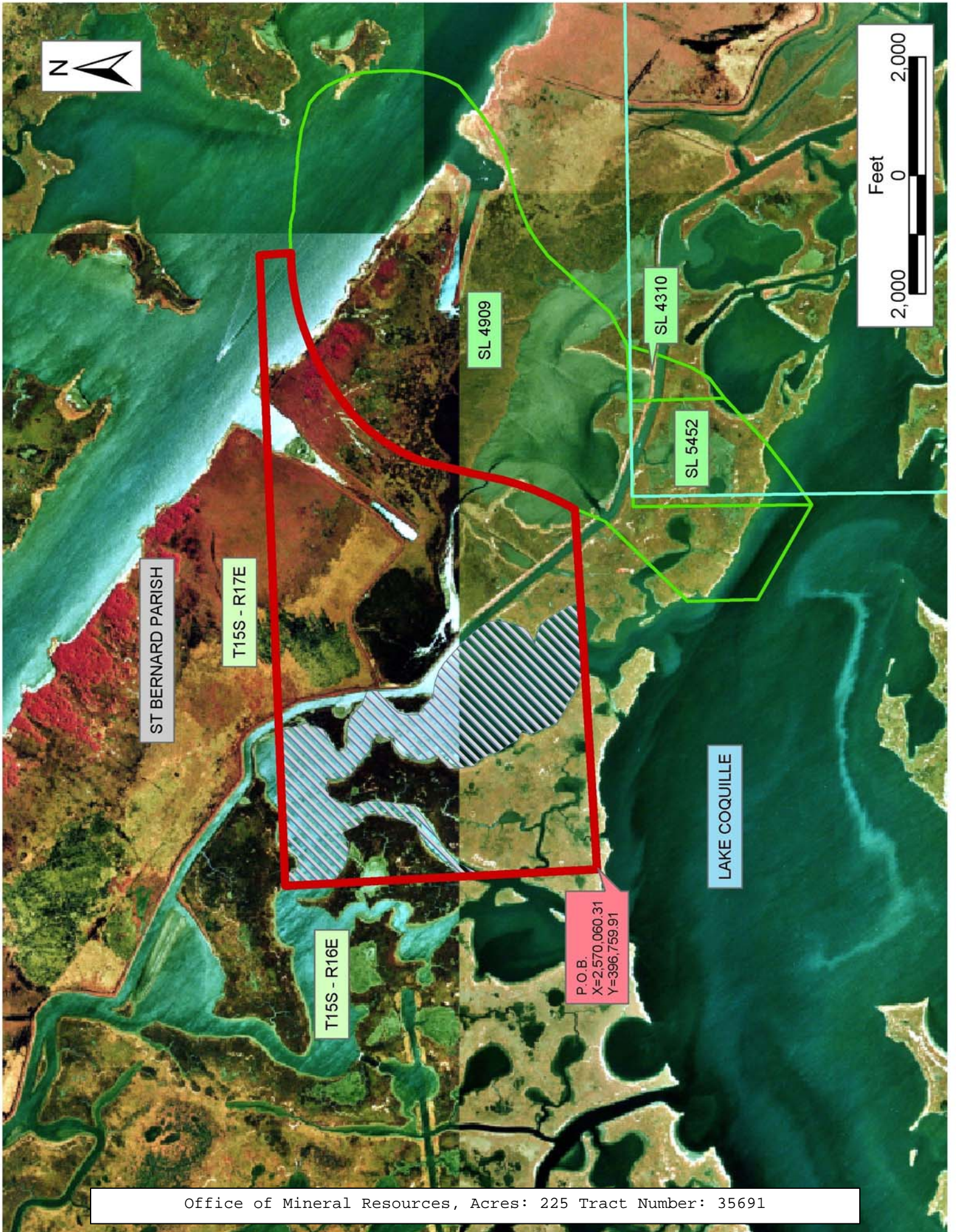
NOTE: The State of Louisiana does hereby reserve, and this lease shall be subject to, the imprescriptible right of surface use in the nature of a servitude in favor of the Department of Natural Resources, including its Offices and Commissions, for the sole purpose of implementing, constructing, servicing and maintaining approved coastal zone management and/or restoration projects. Utilization of any and all rights derived under this lease by the mineral lessee, its agents, successors or assigns,

shall not interfere with nor hinder the reasonable surface use by the Department of Natural Resources, its Offices or Commissions, as herein above reserved.

NOTE: The Department of Wildlife and Fisheries has designated certain areas in the coastal waters of the State of Louisiana as Oyster Seed Bed Areas. The exact location of those Seed Bed Areas must be obtained from the Department of Wildlife and Fisheries and any work done under a mineral lease from the State of Louisiana may necessarily be conducted in conformity with the rules and regulations promulgated by the said Department of Wildlife and Fisheries for Oyster Seed Bed Areas.

Applicant: Harold J. Anderson, Inc.

Bidder	Cash Payment	Price/Acre	Rental	Oil	Gas	Other



TRACT 35692 - Portion of Block 47, Chandeleur Sound Area, St. Bernard Parish, Louisiana

All of the lands now or formerly constituting the beds and bottoms of all water bodies of every nature and description the title of which vests in the State of Louisiana, together with all islands arising therein and other lands formed by accretion or by reliction, where allowed by law, excepting tax adjudicated lands, and not presently under mineral lease on October 8, 2003, situated in St. Bernard Parish, Louisiana, and more particularly described as follows: Beginning at a point having Coordinates of X = 2,591,238.95 and Y = 397,230.45; thence North 89 degrees 50 minutes 08 seconds West approximately 10,696 feet to a point on the Eastern boundary line of State Lease No. 4909, as amended; thence along the boundary of said State Lease No. 4909 the following courses: Northeasterly and Northwesterly to the point of intersection with a line having a bearing of North 03 degrees 13 minutes 01 seconds West; thence North 03 degrees 13 minutes 01 seconds West approximately 535 feet to a point having Coordinates of X = 2,580,518.02 and Y = 402,313.19; thence North 88 degrees 30 minutes 01 seconds East 10,535.61 feet; thence South 02 degrees 01 minutes 10 seconds East 150.78 feet to the Northeast corner of State Lease No. 15484 having Coordinates of X = 2,591,055.33 and Y = 402,438.24; thence along the boundary of said State Lease No. 15484 the following courses: South 81 degrees 31 minutes 44 seconds West 55.94 feet, South 80 degrees 24 minutes 04 seconds West 1,072.01 feet, South 75 degrees 13 minutes 05 seconds West 1,699.24 feet, South 68 degrees 00 minutes 32 seconds West 474.52 feet, South 59 degrees 39 minutes 24 seconds West 185.40 feet, South 3,216.24 feet, East 3,400.00 feet and North 612.89 feet to a point on the Eastern boundary line of said State Lease No. 15484, also being the most Southerly Southwest corner of State Lease No. 14969, as amended, having Coordinates of X = 2,591,100.00 and Y = 398,942.98; thence North 76 degrees 12 minutes 02 seconds East 80.21 feet along the Southern boundary line of said State Lease No. 14969 to a point having Coordinates of X = 2,591,177.89 and Y = 398,962.11; thence South 02 degrees 01 minutes 10 seconds East 1,732.74 feet to the point of beginning, **LESS AND EXCEPT** any portion of State Lease No. 15484 and State Lease No. 4909, as amended, that may lie within the above described tract, containing approximately **262 acres**, all as more particularly outlined on a plat on file in the Office of Mineral Resources, Department of Natural Resources. All bearings, distances and coordinates are based on Louisiana Coordinate System of 1927, (North or South Zone), where applicable.

NOTE: The above description of the Tract nominated for lease has been provided and corrected, where required, exclusively by the nomination party. Any mineral lease selected from this Tract and awarded by the Louisiana State Mineral Board shall be without warranty of any kind, either express, implied, or statutory, including, but not limited to, the implied warranties of merchantability and fitness for a particular purpose. Should the mineral lease awarded by the Louisiana State Mineral Board be subsequently modified, cancelled or abrogated due to the existence of conflicting leases, operating agreements, private claims or

other future obligations or conditions which may affect all or any portion of the leased Tract, it shall not relieve the Lessee of the obligation to pay any bonus due thereon to the Louisiana State Mineral Board, nor shall the Louisiana State Mineral Board be obligated to refund any consideration paid by the Lessor prior to such modification, cancellation, or abrogation, including, but not limited to, bonuses, rentals and royalties.

NOTE: The State of Louisiana does hereby reserve, and this lease shall be subject to, the imprescriptible right of surface use in the nature of a servitude in favor of the Department of Natural Resources, including its Offices and Commissions, for the sole purpose of implementing, constructing, servicing and maintaining approved coastal zone management and/or restoration projects. Utilization of any and all rights derived under this lease by the mineral lessee, its agents, successors or assigns, shall not interfere with nor hinder the reasonable surface use by the Department of Natural Resources, its Offices or Commissions, as herein above reserved.

NOTE: The Department of Wildlife and Fisheries has designated certain areas in the coastal waters of the State of Louisiana as Oyster Seed Bed Areas. The exact location of those Seed Bed Areas must be obtained from the Department of Wildlife and Fisheries and any work done under a mineral lease from the State of Louisiana may necessarily be conducted in conformity with the rules and regulations promulgated by the said Department of Wildlife and Fisheries for Oyster Seed Bed Areas.

Applicant: Harold J. Anderson, Inc.

Bidder	Cash Payment	Price/Acre	Rental	Oil	Gas	Other



BLOCK CS0047

CHANDELEUR
SOUND AREA

SL 15485

SL 14969

P.O.B.
X=2,591,238.95
Y=397,230.45



ST BERNARD PARISH

SL 15484

T15S - R17E

SL 4909