

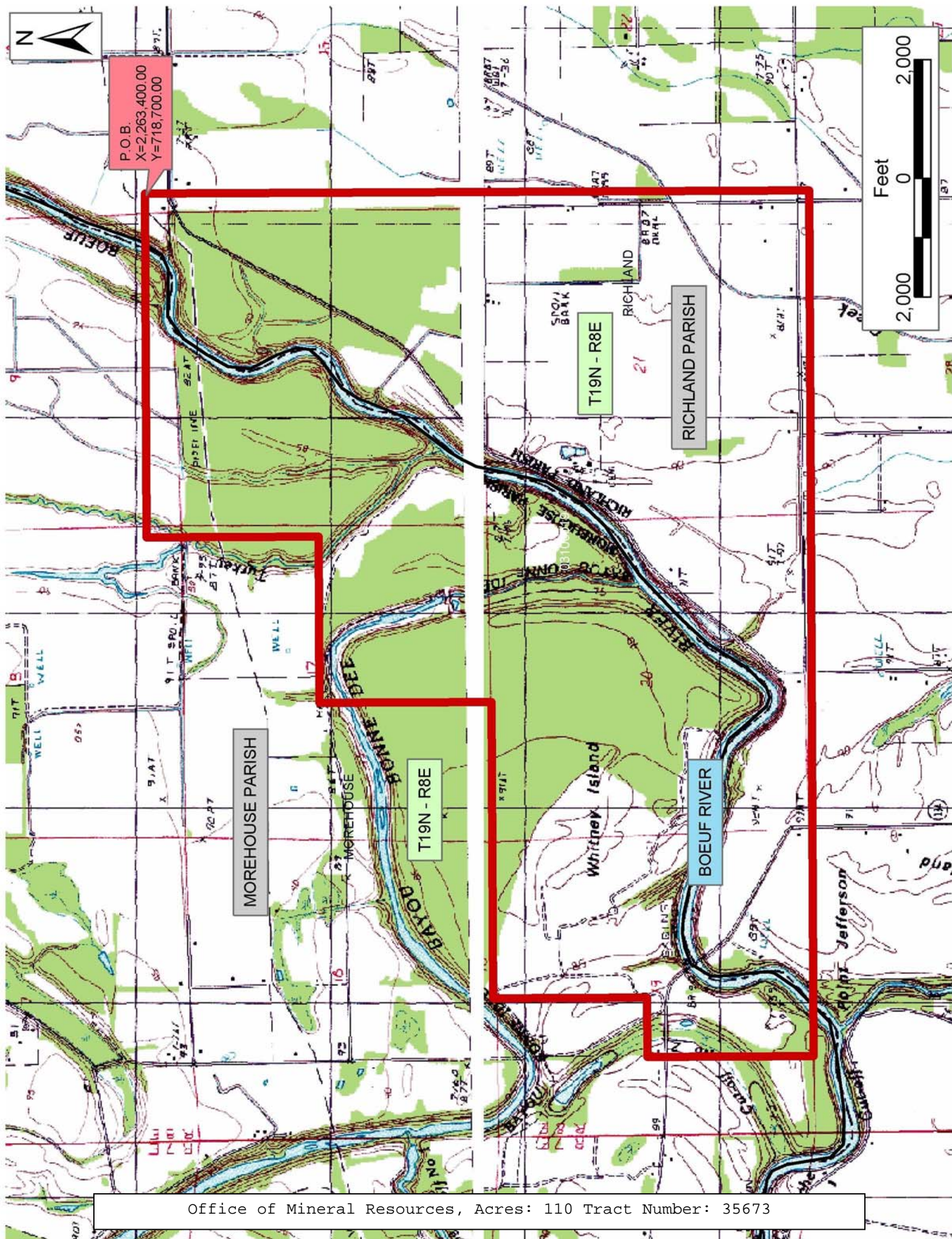
TRACT 35673 - Morehouse and Richland Parishes, Louisiana

All of the lands now or formerly constituting the beds and bottoms of all water bodies of every nature and description the title of which vests in the State of Louisiana, together with all islands arising therein and other lands formed by accretion or by reliction, where allowed by law, excepting tax adjudicated lands, and not presently under mineral lease on October 8, 2003, situated in Morehouse and Richland Parishes, Louisiana, and more particularly described as follows: Beginning at a point having Coordinates of X = 2,263,400.00 and Y = 718,700.00; thence West 5,800.00 feet to a point having Coordinates of X = 2,257,600.00 and Y = 718,700.00; thence South 2,900.00 feet to a point having Coordinates of X = 2,257,600.00 and Y = 715,800.00; thence West 2,800.00 feet to a point having Coordinates of X = 2,254,800.00 and Y = 715,800.00; thence South 2,900.00 feet to a point having Coordinates of X = 2,254,800.00 and Y = 712,900.00; thence West 5,000.00 feet to a point having Coordinates of X = 2,249,800.00 and Y = 712,900.00; thence South 2,600.00 feet to a point having Coordinates of X = 2,249,800.00 and Y = 710,300.00; thence West 1,000.00 feet to a point having Coordinates of X = 2,248,800.00 and Y = 710,300.00; thence South 2,800.00 feet to a point having Coordinates of X = 2,248,800.00 and Y = 707,500.00; thence East 14,600.00 feet to a point having coordinates of X = 2,263,400.00 and Y = 707,500.00; thence North 11,200.00 feet to the point of beginning, containing approximately **110 acres**, all as more particularly outlined on a plat on file in the Office of Mineral Resources, Department of Natural Resources. All bearings, distances and coordinates are based on Louisiana Coordinate System of 1927, (North or South Zone), where applicable.

NOTE: The above description of the Tract nominated for lease has been provided and corrected, where required, exclusively by the nomination party. Any mineral lease selected from this Tract and awarded by the Louisiana State Mineral Board shall be without warranty of any kind, either express, implied, or statutory, including, but not limited to, the implied warranties of merchantability and fitness for a particular purpose. Should the mineral lease awarded by the Louisiana State Mineral Board be subsequently modified, cancelled or abrogated due to the existence of conflicting leases, operating agreements, private claims or other future obligations or conditions which may affect all or any portion of the leased Tract, it shall not relieve the Lessee of the obligation to pay any bonus due thereon to the Louisiana State Mineral Board, nor shall the Louisiana State Mineral Board be obligated to refund any consideration paid by the Lessor prior to such modification, cancellation, or abrogation, including, but not limited to, bonuses, rentals and royalties.

Applicant: Roger Adams

Bidder	Cash Payment	Price/ Acre	Rental	Oil	Gas	Other



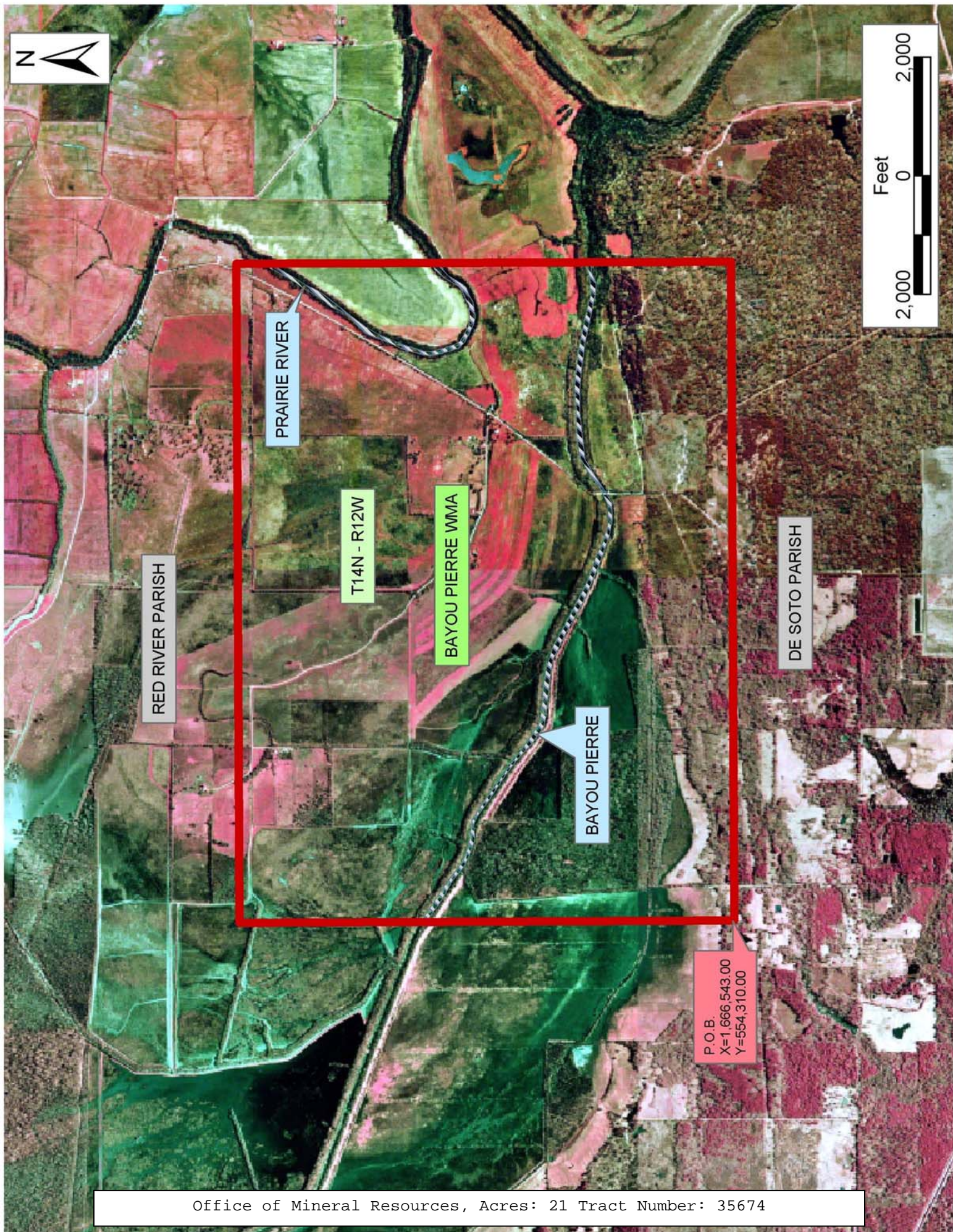
TRACT 35674 - De Soto and Red River Parishes, Louisiana

All of the lands now or formerly constituting the beds and bottoms of all water bodies of every nature and description the title of which vests in the State of Louisiana, together with all islands arising therein and other lands formed by accretion or by reliction, where allowed by law, excepting tax adjudicated lands, and not presently under mineral lease on October 8, 2003, situated in De Soto and Red River Parishes, Louisiana, and more particularly described as follows: Beginning at a Point having Coordinates of X = 1,666,543.00 and Y = 554,310.00; thence North 8,344.00 feet to a point having Coordinates of X = 1,666,543.00 and Y = 562,654.00; thence East 11,117.00 feet to a point having Coordinates of X = 1,677,660.00 and Y = 562,654.00; thence South 8,344.00 feet to a point having Coordinates of X = 1,677,660.00 and Y = 554,310.00; thence West 11,117.00 feet to the point of beginning, **LESS AND EXCEPT** all that portion of the Bayou Pierre Wildlife Management Area and other lands owned or claimed by the Louisiana Wildlife and Fisheries Commission, and the Louisiana Department of Wildlife and Fisheries, situated within the above described tract, containing approximately **21 acres**, all as more particularly outlined on a plat on file in the Office of Mineral Resources, Department of Natural Resources. All bearings, distances and coordinates are based on Louisiana Coordinate System of 1927, (North or South Zone), where applicable.

NOTE: The above description of the Tract nominated for lease has been provided and corrected, where required, exclusively by the nomination party. Any mineral lease selected from this Tract and awarded by the Louisiana State Mineral Board shall be without warranty of any kind, either express, implied, or statutory, including, but not limited to, the implied warranties of merchantability and fitness for a particular purpose. Should the mineral lease awarded by the Louisiana State Mineral Board be subsequently modified, cancelled or abrogated due to the existence of conflicting leases, operating agreements, private claims or other future obligations or conditions which may affect all or any portion of the leased Tract, it shall not relieve the Lessee of the obligation to pay any bonus due thereon to the Louisiana State Mineral Board, nor shall the Louisiana State Mineral Board be obligated to refund any consideration paid by the Lessor prior to such modification, cancellation, or abrogation, including, but not limited to, bonuses, rentals and royalties.

Applicant: Clark Energy Company, Inc.

Bidder	Cash Payment	Price/ Acre	Rental	Oil	Gas	Other



Feet
2,000 0 2,000

RED RIVER PARISH

PRAIRIE RIVER

T14N - R12W

BAYOU PIERRE WMA

BAYOU PIERRE

DE SOTO PARISH

P.O.B.
X=1,666,543.00
Y=554,310.00

TRACT 35675 - Calcasieu Parish, Louisiana

All of the lands now or formerly constituting the beds and bottoms of all water bodies of every nature and description the title of which vests in the State of Louisiana, together with all islands arising therein and other lands formed by accretion or by reliction, where allowed by law, excepting tax adjudicated lands, and not presently under mineral lease on October 8, 2003, situated in Calcasieu Parish, Louisiana, and more particularly described as follows: Beginning at a point having Coordinates of X = 1,247,237.44 and Y = 514,960.00; thence West 2,951.06 feet to a point having Coordinates of X = 1,244,286.38 and Y = 514,960.00; thence North approximately 5,009.00 feet to the Southwest corner of State Lease No. 1717, as amended; thence Northeasterly and Easterly to its most South Southeast corner; thence continue Easterly to a point on the West Line of State Lease No. 16951 having Coordinates of X = 1,252,651.59 and Y = 520,513.47; thence South 8,161.74 feet along the West Line of said State Lease No. 16951 to a point having Coordinates of X = 1,252,651.59 and Y = 512,351.73; thence West 5,414.15 feet to a point having Coordinates of X = 1,247,237.44 and Y = 512,351.73; thence North 2,608.27 feet to the point of beginning, **LESS AND EXCEPT** all that portion of State Lease No. 1717, as amended, that may lie within the above described tract, containing approximately **162.77 acres**, **LESS AND EXCEPT** that portion thereof, if any, located West of the boundary line between the States of Texas and Louisiana as determined by the report of the Special Master and adjudicated by the Supreme Court of the United States in litigation styled **Texas v. Louisiana, et al No. 36 Original**, or as otherwise approved by said court, all as more particularly outlined on a plat on file in the Office of Mineral Resources, Department of Natural Resources. All bearings, distances and coordinates are based on Louisiana Coordinate System of 1927, (North or South Zone), where applicable.

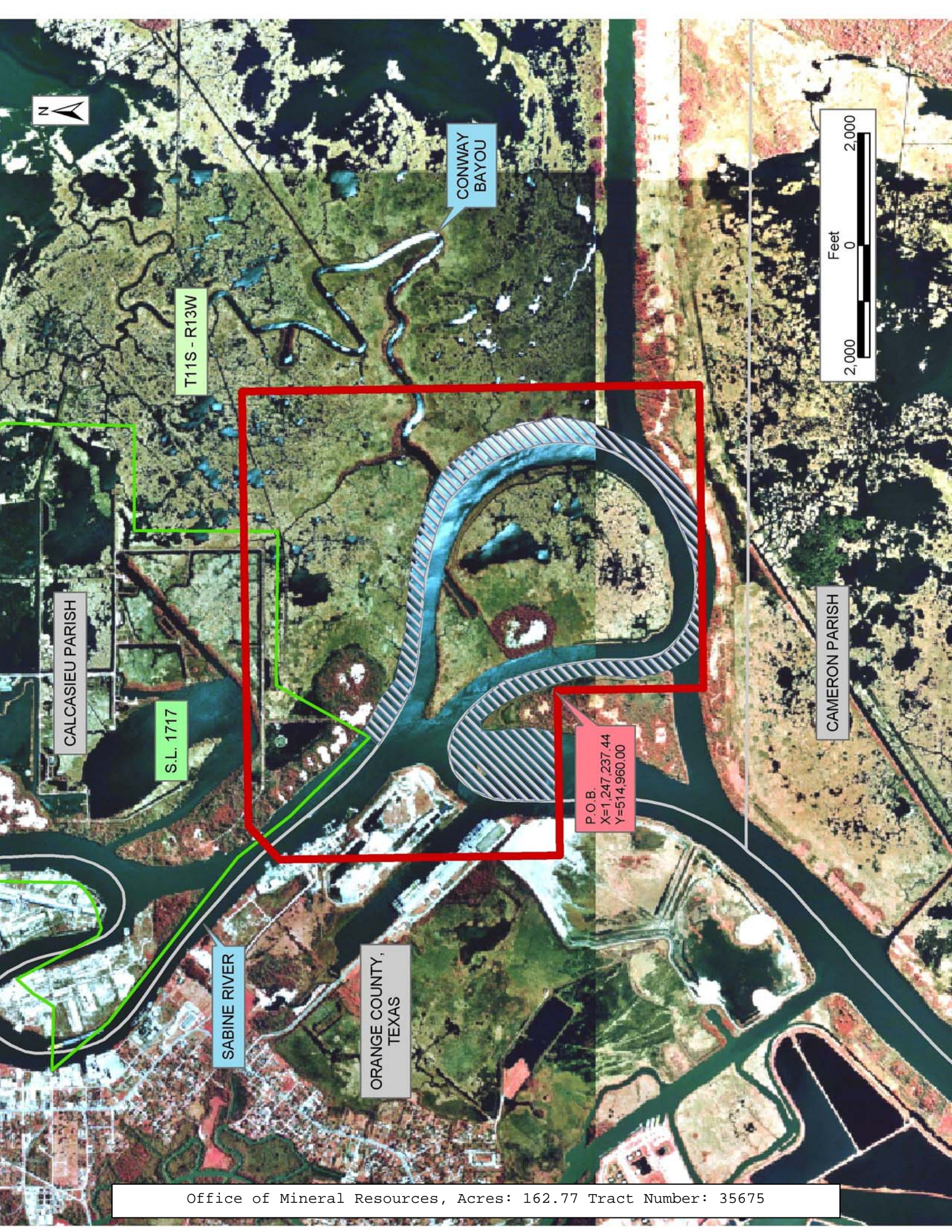
NOTE: The above description of the Tract nominated for lease has been provided and corrected, where required, exclusively by the nomination party. Any mineral lease selected from this Tract and awarded by the Louisiana State Mineral Board shall be without warranty of any kind, either express, implied, or statutory, including, but not limited to, the implied warranties of merchantability and fitness for a particular purpose. Should the mineral lease awarded by the Louisiana State Mineral Board be subsequently modified, cancelled or abrogated due to the existence of conflicting leases, operating agreements, private claims or other future obligations or conditions which may affect all or any portion of the leased Tract, it shall not relieve the Lessee of the obligation to pay any bonus due thereon to the Louisiana State Mineral Board, nor shall the Louisiana State Mineral Board be obligated to refund any consideration paid by the Lessor prior to such modification, cancellation, or abrogation, including, but not limited to, bonuses, rentals and royalties.

NOTE: The State of Louisiana does hereby reserve, and this lease shall be subject to, the imprescriptible right of surface use in the nature of a servitude in favor of the Department of Natural Resources, including its

Offices and Commissions, for the sole purpose of implementing, constructing, servicing and maintaining approved coastal zone management and/or restoration projects. Utilization of any and all rights derived under this lease by the mineral lessee, its agents, successors or assigns, shall not interfere with nor hinder the reasonable surface use by the Department of Natural Resources, its Offices or Commissions, as herein above reserved.

Applicant: Cypress Energy Corporation

Bidder	Cash Payment	Price/ Acre	Rental	Oil	Gas	Other



TRACT 35676 - Calcasieu and Cameron Parishes, Louisiana

All of the lands now or formerly constituting the beds and bottoms of all water bodies of every nature and description the title of which vests in the State of Louisiana, together with all islands arising therein and other lands formed by accretion or by reliction, where allowed by law, excepting tax adjudicated lands, and not presently under mineral lease on October 8, 2003, situated in Calcasieu and Cameron Parishes, Louisiana, and more particularly described as follows: Beginning at a point having Coordinates of X = 1,247,237.44 and Y = 496,480.00; thence West 15,153.92 feet to the Northeast corner of State Lease No. 17807 having Coordinates of X = 1,232,083.52 and Y = 496,480.00; thence continue West 3,046.08 feet along the North line of said State Lease No. 17807 to a point having Coordinates of X = 1,229,037.44 and Y = 496,480.00; thence North 18,480.00 feet to a point having Coordinates of X = 1,229,037.44 and Y = 514,960.00; thence East 18,200.00 feet to a point having Coordinates of X = 1,247,237.44 and Y = 514,960.00; thence South 18,480.00 feet to the point of beginning, containing approximately **301.00 acres, LESS AND EXCEPT** that portion thereof, if any, located West of the boundary line between the States of Texas and Louisiana as determined by the report of the Special Master and adjudicated by the Supreme Court of the United States in litigation styled **Texas v. Louisiana, et al No. 36 Original**, or as otherwise approved by said court, all as more particularly outlined on a plat on file in the Office of Mineral Resources, Department of Natural Resources. All bearings, distances and coordinates are based on Louisiana Coordinate System of 1927, (North or South Zone), where applicable.

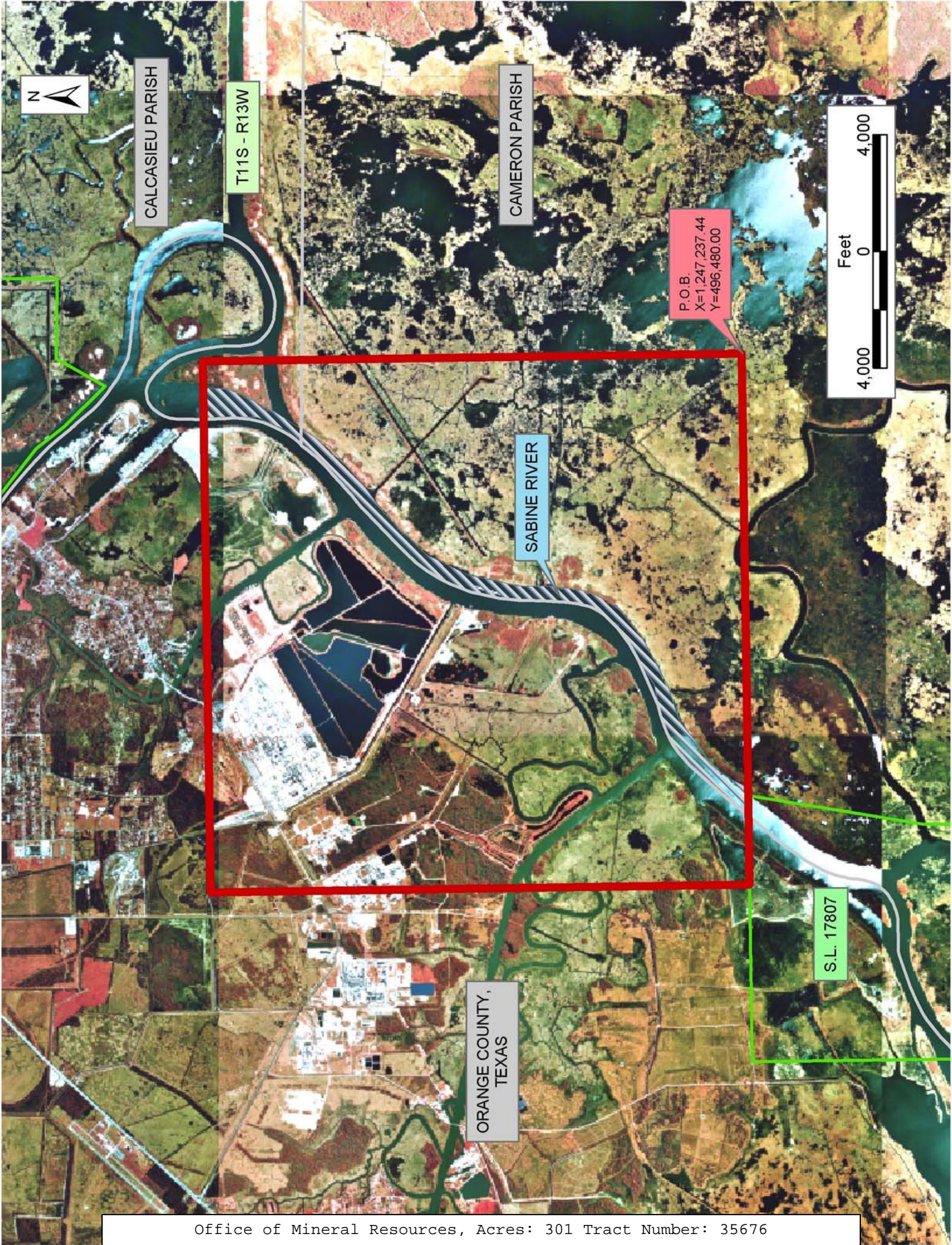
NOTE: The above description of the Tract nominated for lease has been provided and corrected, where required, exclusively by the nomination party. Any mineral lease selected from this Tract and awarded by the Louisiana State Mineral Board shall be without warranty of any kind, either express, implied, or statutory, including, but not limited to, the implied warranties of merchantability and fitness for a particular purpose. Should the mineral lease awarded by the Louisiana State Mineral Board be subsequently modified, cancelled or abrogated due to the existence of conflicting leases, operating agreements, private claims or other future obligations or conditions which may affect all or any portion of the leased Tract, it shall not relieve the Lessee of the obligation to pay any bonus due thereon to the Louisiana State Mineral Board, nor shall the Louisiana State Mineral Board be obligated to refund any consideration paid by the Lessor prior to such modification, cancellation, or abrogation, including, but not limited to, bonuses, rentals and royalties.

NOTE: The State of Louisiana does hereby reserve, and this lease shall be subject to, the imprescriptible right of surface use in the nature of a servitude in favor of the Department of Natural Resources, including its Offices and Commissions, for the sole purpose of implementing, constructing, servicing and maintaining approved coastal zone management and/or restoration projects. Utilization of any and all rights derived under this lease by the mineral lessee, its agents, successors or assigns,

shall not interfere with nor hinder the reasonable surface use by the Department of Natural Resources, its Offices or Commissions, as herein above reserved.

Applicant: Cypress Energy Corporation

Bidder	Cash Payment	Price/ Acre	Rental	Oil	Gas	Other



TRACT 35677 - Cameron Parish, Louisiana

All of the lands now or formerly constituting the beds and bottoms of all water bodies of every nature and description the title of which vests in the State of Louisiana, together with all islands arising therein and other lands formed by accretion or by reliction, where allowed by law, excepting tax adjudicated lands, and not presently under mineral lease on October 8, 2003, situated in Cameron Parish, Louisiana, and more particularly described as follows: Beginning at the Southeast corner of State Lease No. 17701 having Coordinates of X = 1,224,000.00 and Y = 478,000.00; thence North 2,263.33 feet along the East boundary of said State Lease No. 17701 to its point of intersection with the Southerly boundary of State Lease No. 7555, as amended, having Coordinates of X = 1,224,000.00 and Y = 480,263.33; thence along the boundary of said State Lease No. 7555 as follows: Easterly, Northeasterly, Northerly, Northwesterly, Northerly and Northeasterly to a point having Coordinates of X = 1,223,390.92 and Y = 485,511.52, also being the Southwest corner of State Lease No. 17807; thence along the boundaries of said State Lease No. 17807 the following: East 7,621.29 feet, North 4,947.41 feet and North 10 degrees 05 minutes 20 seconds East 6,115.63 feet to its Northeast corner having Coordinates of X = 1,232,083.52 and Y = 496,480.00; thence East 1,444.07 feet to a point having Coordinates of X = 1,233,527.59 and Y = 496,480.00; thence South 18,480.00 feet to a point having Coordinates of X = 1,233,527.59 and Y = 478,000.00; thence West 9,527.59 feet to the point of beginning, **LESS AND EXCEPT** all that portion of State Lease No. 7555, as amended, that may lie within the boundaries of the above described tract, containing approximately **1,367.00 acres**, all as more particularly outlined on a plat on file in the Office of Mineral Resources, Department of Natural Resources. All bearings, distances and coordinates are based on Louisiana Coordinate System of 1927, (North or South Zone), where applicable.

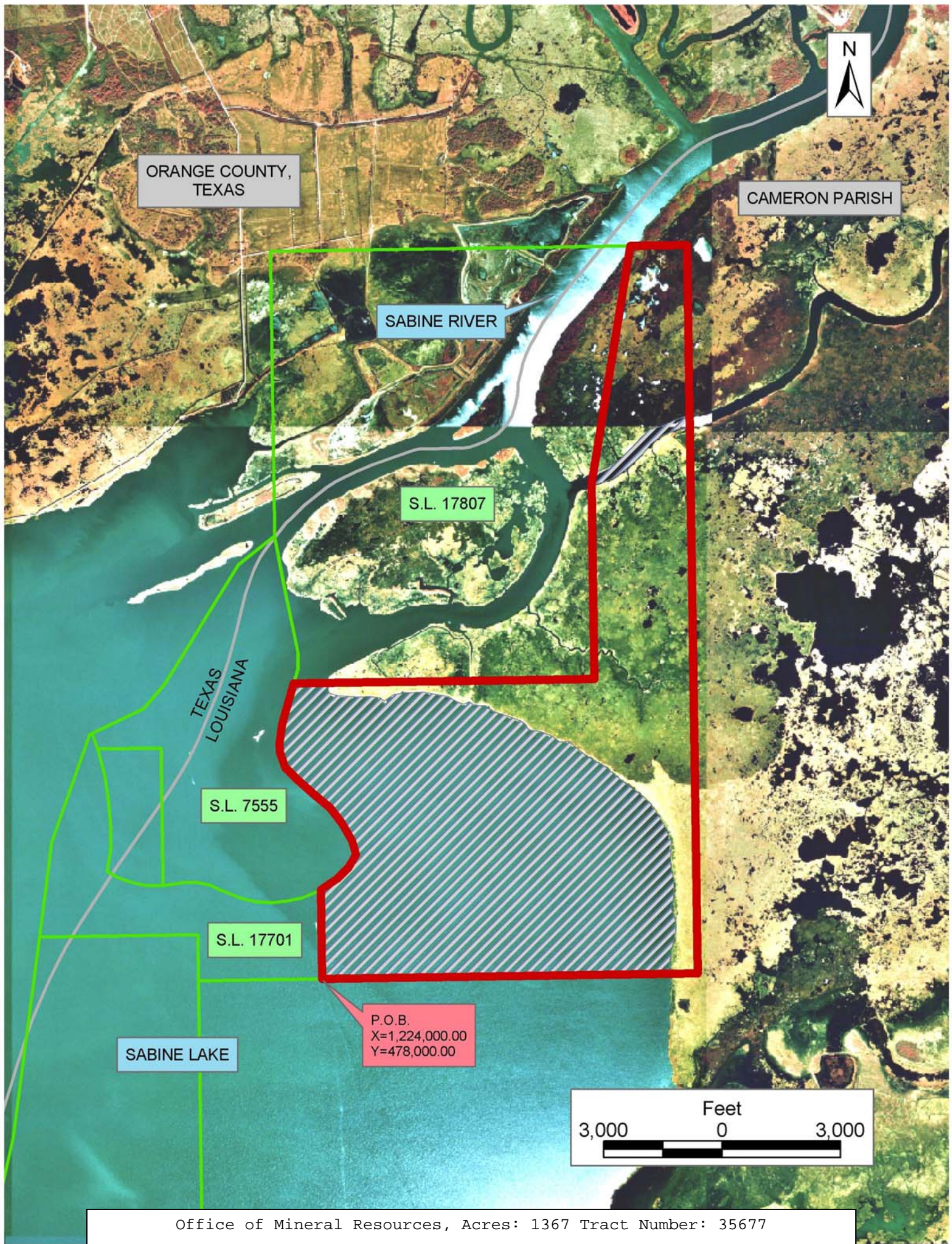
NOTE: The above description of the Tract nominated for lease has been provided and corrected, where required, exclusively by the nomination party. Any mineral lease selected from this Tract and awarded by the Louisiana State Mineral Board shall be without warranty of any kind, either express, implied, or statutory, including, but not limited to, the implied warranties of merchantability and fitness for a particular purpose. Should the mineral lease awarded by the Louisiana State Mineral Board be subsequently modified, cancelled or abrogated due to the existence of conflicting leases, operating agreements, private claims or other future obligations or conditions which may affect all or any portion of the leased Tract, it shall not relieve the Lessee of the obligation to pay any bonus due thereon to the Louisiana State Mineral Board, nor shall the Louisiana State Mineral Board be obligated to refund any consideration paid by the Lessor prior to such modification, cancellation, or abrogation, including, but not limited to, bonuses, rentals and royalties.

NOTE: The State of Louisiana does hereby reserve, and this lease shall be subject to, the imprescriptible right of surface use in the nature of a

servitude in favor of the Department of Natural Resources, including its Offices and Commissions, for the sole purpose of implementing, constructing, servicing and maintaining approved coastal zone management and/or restoration projects. Utilization of any and all rights derived under this lease by the mineral lessee, its agents, successors or assigns, shall not interfere with nor hinder the reasonable surface use by the Department of Natural Resources, its Offices or Commissions, as herein above reserved.

Applicant: Cypress Energy Corporation

Bidder	Cash Payment	Price/ Acre	Rental	Oil	Gas	Other



TRACT 35678 - Cameron Parish, Louisiana

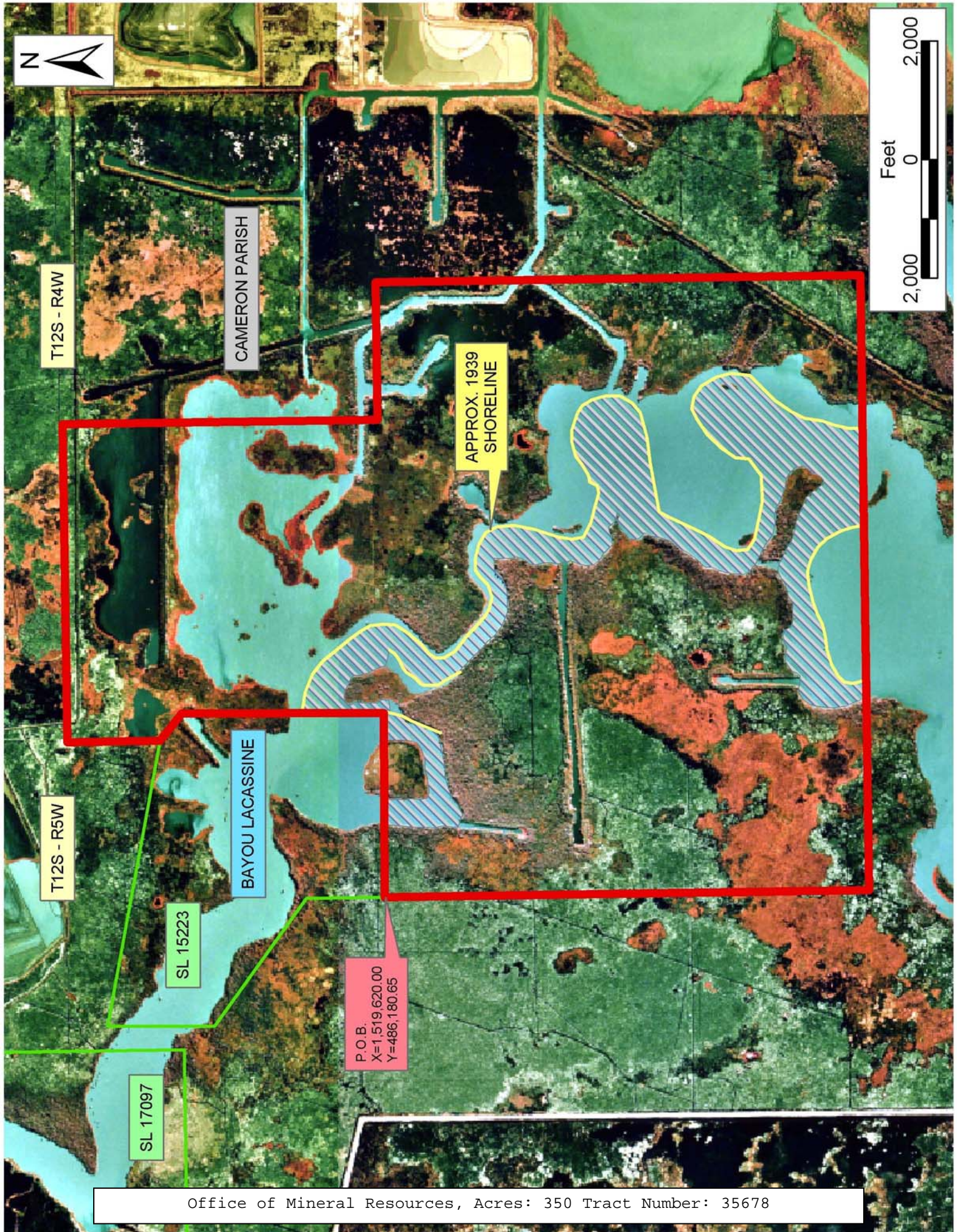
All of the lands now or formerly constituting the beds and bottoms of all water bodies of every nature and description the title of which vests in the State of Louisiana, together with all islands arising therein and other lands formed by accretion or by reliction, where allowed by law, excepting tax adjudicated lands, and not presently under mineral lease on October 8, 2003, situated in Cameron Parish, Louisiana, and more particularly described as follows: Beginning at the Southwest corner of State Lease No. 15223 having Coordinates of X = 1,519,620.00 and Y = 486,180.65, said point being the point of beginning; thence South 89 degrees 23 minutes 02 seconds East along the South line of said State Lease No. 15223 a distance of 3,109.48 feet to a point at the Southeast corner of said State Lease No. 15223 having Coordinates of X = 1,522,729.30 and Y = 486,147.22; thence North 00 degrees 44 minutes 49 seconds East along the East line of said State Lease No. 15223 a distance of 3,409.21 feet to a point at a Northeast corner of said State Lease No. 15223 having Coordinates of X = 1,522,773.75 and Y = 489,556.14; thence North 50 degrees 40 minutes 01 seconds West along a Northeasterly line of said State Lease No. 15223 a distance of 592.20 feet to a point at a Northeast corner of said State Lease No. 15223 having Coordinates of X = 1,522,315.70 and Y = 489,931.49; thence North a distance of 1,568.51 feet to a point having Coordinates of X = 1,522,315.70 and Y = 491,500.00; thence East a distance of 5,366.65 feet to a point having Coordinates of X = 1,527,682.35 and Y = 491,500.00; thence South a distance of 5,319.35 feet to a point having Coordinates of X = 1,527,682.35 and Y = 486,180.65; thence East a distance of 2,317.65 feet to a point having Coordinates of X = 1,530,000.00 and Y = 486,180.65; thence South a distance of 8,180.65 feet to a point having Coordinates of X = 1,530,000.00 and Y = 478,000.00; thence West a distance of 10,380.00 feet to a point having Coordinates of X = 1,519,620.00 and Y = 478,000.00; thence North a distance of 8,180.65 feet to the point of beginning, containing approximately **350 acres**, all as more particularly outlined on a plat on file in the Office of Mineral Resources, Department of Natural Resources. All bearings, distances and coordinates are based on Louisiana Coordinate System of 1927, (North or South Zone), where applicable.

NOTE: The above description of the Tract nominated for lease has been provided and corrected, where required, exclusively by the nomination party. Any mineral lease selected from this Tract and awarded by the Louisiana State Mineral Board shall be without warranty of any kind, either express, implied, or statutory, including, but not limited to, the implied warranties of merchantability and fitness for a particular purpose. Should the mineral lease awarded by the Louisiana State Mineral Board be subsequently modified, cancelled or abrogated due to the existence of conflicting leases, operating agreements, private claims or other future obligations or conditions which may affect all or any portion of the leased Tract, it shall not relieve the Lessee of the obligation to pay any bonus due thereon to the Louisiana State Mineral Board, nor shall the Louisiana State Mineral Board be obligated to refund any consideration

paid by the Lessor prior to such modification, cancellation, or abrogation, including, but not limited to, bonuses, rentals and royalties.

Applicant: B.R. Higgins

Bidder	Cash Payment	Price/ Acre	Rental	Oil	Gas	Other



TRACT 35679 - Cameron Parish, Louisiana

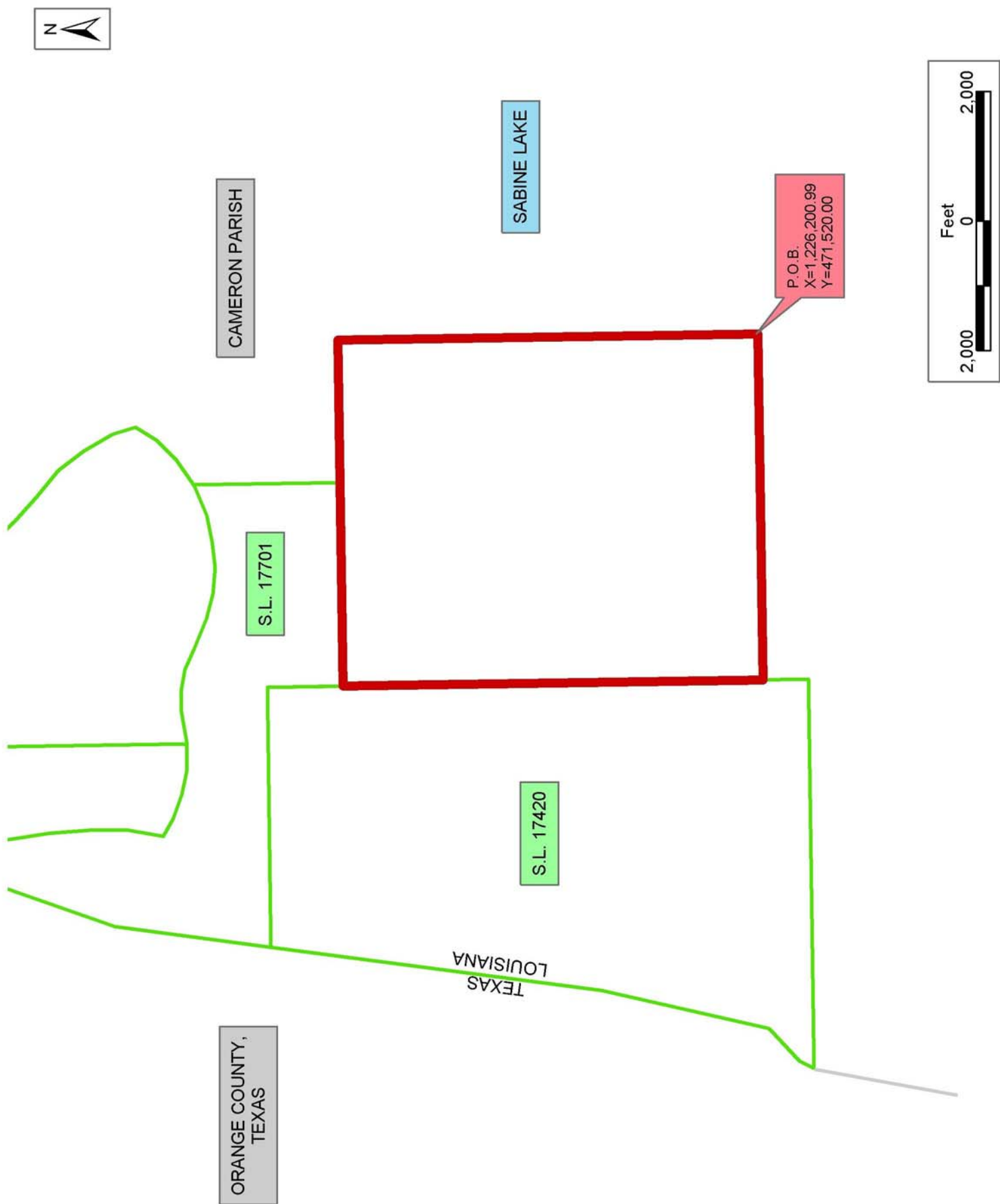
All of the lands now or formerly constituting the beds and bottoms of all water bodies of every nature and description the title of which vests in the State of Louisiana, together with all islands arising therein and other lands formed by accretion or by reliction, where allowed by law, excepting tax adjudicated lands, and not presently under mineral lease on October 8, 2003, situated in Cameron Parish, Louisiana, and more particularly described as follows: Beginning at a point having Coordinates of X = 1,226,200.99 and Y = 471,520.00; thence West 5,340.99 feet to a point on the East Line of State Lease No. 17420 having Coordinates of X = 1,220,860.00 and Y = 471,520.00; thence North 6,480.00 feet along the East line of said State Lease No. 17420 to the most South Southwest corner of State Lease No. 17701 having Coordinates of X = 1,220,860.00 and Y = 478,000.00; thence East 3,140.00 feet along the South line of said State Lease No. 17701 to its Southeast corner having Coordinates of X = 1,224,000.00 and Y = 478,000.00; thence continue East 2,200.99 feet to a point having Coordinates of X = 1,226,200.99 and Y = 478,000.00; thence South 6,480.00 feet to the point of beginning, containing approximately **794.53 acres**, all as more particularly outlined on a plat on file in the Office of Mineral Resources, Department of Natural Resources. All bearings, distances and coordinates are based on Louisiana Coordinate System of 1927, (North or South Zone), where applicable.

NOTE: The above description of the Tract nominated for lease has been provided and corrected, where required, exclusively by the nomination party. Any mineral lease selected from this Tract and awarded by the Louisiana State Mineral Board shall be without warranty of any kind, either express, implied, or statutory, including, but not limited to, the implied warranties of merchantability and fitness for a particular purpose. Should the mineral lease awarded by the Louisiana State Mineral Board be subsequently modified, cancelled or abrogated due to the existence of conflicting leases, operating agreements, private claims or other future obligations or conditions which may affect all or any portion of the leased Tract, it shall not relieve the Lessee of the obligation to pay any bonus due thereon to the Louisiana State Mineral Board, nor shall the Louisiana State Mineral Board be obligated to refund any consideration paid by the Lessor prior to such modification, cancellation, or abrogation, including, but not limited to, bonuses, rentals and royalties.

NOTE: The State of Louisiana does hereby reserve, and this lease shall be subject to, the imprescriptible right of surface use in the nature of a servitude in favor of the Department of Natural Resources, including its Offices and Commissions, for the sole purpose of implementing, constructing, servicing and maintaining approved coastal zone management and/or restoration projects. Utilization of any and all rights derived under this lease by the mineral lessee, its agents, successors or assigns, shall not interfere with nor hinder the reasonable surface use by the Department of Natural Resources, its Offices or Commissions, as herein above reserved.

Applicant: Cypress Energy Corporation

Bidder	Cash Payment	Price/ Acre	Rental	Oil	Gas	Other



TRACT 35680 - Cameron Parish, Louisiana

All of the lands now or formerly constituting the beds and bottoms of all water bodies of every nature and description the title of which vests in the State of Louisiana, together with all islands arising therein and other lands formed by accretion or by reliction, where allowed by law, excepting tax adjudicated lands, and not presently under mineral lease on October 8, 2003, situated in Cameron Parish, Louisiana, and more particularly described as follows: Beginning at a point having Coordinates of X = 1,226,200.99 and Y = 471,520.00; thence North 6,480.00 feet to a point having Coordinates of X = 1,226,200.99 and Y = 478,000.00; thence East 7,326.60 feet to a point having Coordinates of X = 1,233,527.59 and Y = 478,000.00; thence South 6,480.00 feet to a point having Coordinates of X = 1,233,527.59 and Y = 471,520.00; thence West 7,326.60 feet to the point of beginning, containing approximately **904.38 acres**, all as more particularly outlined on a plat on file in the Office of Mineral Resources, Department of Natural Resources. All bearings, distances and coordinates are based on Louisiana Coordinate System of 1927, (North or South Zone), where applicable.

NOTE: The above description of the Tract nominated for lease has been provided and corrected, where required, exclusively by the nomination party. Any mineral lease selected from this Tract and awarded by the Louisiana State Mineral Board shall be without warranty of any kind, either express, implied, or statutory, including, but not limited to, the implied warranties of merchantability and fitness for a particular purpose. Should the mineral lease awarded by the Louisiana State Mineral Board be subsequently modified, cancelled or abrogated due to the existence of conflicting leases, operating agreements, private claims or other future obligations or conditions which may affect all or any portion of the leased Tract, it shall not relieve the Lessee of the obligation to pay any bonus due thereon to the Louisiana State Mineral Board, nor shall the Louisiana State Mineral Board be obligated to refund any consideration paid by the Lessor prior to such modification, cancellation, or abrogation, including, but not limited to, bonuses, rentals and royalties.

NOTE: The State of Louisiana does hereby reserve, and this lease shall be subject to, the imprescriptible right of surface use in the nature of a servitude in favor of the Department of Natural Resources, including its Offices and Commissions, for the sole purpose of implementing, constructing, servicing and maintaining approved coastal zone management and/or restoration projects. Utilization of any and all rights derived under this lease by the mineral lessee, its agents, successors or assigns, shall not interfere with nor hinder the reasonable surface use by the Department of Natural Resources, its Offices or Commissions, as herein above reserved.

Applicant: Cypress Energy Corporation

Bidder	Cash Payment	Price/ Acre	Rental	Oil	Gas	Other



CAMERON PARISH

T11S - R13W

SABINE LAKE

P.O.B.
X=1,226,200.99
Y=471,520.00

TRACT 35681 - Cameron Parish, Louisiana

All of the lands now or formerly constituting the beds and bottoms of all water bodies of every nature and description the title of which vests in the State of Louisiana, together with all islands arising therein and other lands formed by accretion or by reliction, where allowed by law, excepting tax adjudicated lands, and not presently under mineral lease on October 8, 2003, situated in Cameron Parish, Louisiana, and more particularly described as follows: Beginning at a point having Coordinates of X = 1,219,994.80 and Y = 466,894.24; thence North 3,925.76 feet to a point on the South line of State Lease No. 17420 having Coordinates of X = 1,219,994.80 and Y = 470,820.00; thence East 865.20 feet and North 700.00 feet along the South and East boundaries of said State Lease No. 17420 to a point on its East line having Coordinates of X = 1,220,860.00 and Y = 471,520.00; thence East 5,340.99 feet to a point having Coordinates of X = 1,226,200.99 and Y = 471,520.00; thence South 4,625.76 feet to a point having Coordinates of X = 1,226,200.99 and Y = 466,894.24; thence West 6,206.19 feet to the point of beginning, containing approximately **645.15 acres**, all as more particularly outlined on a plat on file in the Office of Mineral Resources, Department of Natural Resources. All bearings, distances and coordinates are based on Louisiana Coordinate System of 1927, (North or South Zone), where applicable.

NOTE: The above description of the Tract nominated for lease has been provided and corrected, where required, exclusively by the nomination party. Any mineral lease selected from this Tract and awarded by the Louisiana State Mineral Board shall be without warranty of any kind, either express, implied, or statutory, including, but not limited to, the implied warranties of merchantability and fitness for a particular purpose. Should the mineral lease awarded by the Louisiana State Mineral Board be subsequently modified, cancelled or abrogated due to the existence of conflicting leases, operating agreements, private claims or other future obligations or conditions which may affect all or any portion of the leased Tract, it shall not relieve the Lessee of the obligation to pay any bonus due thereon to the Louisiana State Mineral Board, nor shall the Louisiana State Mineral Board be obligated to refund any consideration paid by the Lessor prior to such modification, cancellation, or abrogation, including, but not limited to, bonuses, rentals and royalties.

NOTE: The State of Louisiana does hereby reserve, and this lease shall be subject to, the imprescriptible right of surface use in the nature of a servitude in favor of the Department of Natural Resources, including its Offices and Commissions, for the sole purpose of implementing, constructing, servicing and maintaining approved coastal zone management and/or restoration projects. Utilization of any and all rights derived under this lease by the mineral lessee, its agents, successors or assigns, shall not interfere with nor hinder the reasonable surface use by the Department of Natural Resources, its Offices or Commissions, as herein above reserved.

Applicant: Cypress Energy Corporation

Bidder	Cash Payment	Price/ Acre	Rental	Oil	Gas	Other



SABINE LAKE

S.L. 17420

CAMERON PARISH

P.O.B.
X=1,219,994.80
Y=466,894.24

LOUISIANA
TEXAS

JEFFERSON COUNTY,
TEXAS



TRACT 35682 - Cameron Parish, Louisiana

All of the lands now or formerly constituting the beds and bottoms of all water bodies of every nature and description the title of which vests in the State of Louisiana, together with all islands arising therein and other lands formed by accretion or by reliction, where allowed by law, excepting tax adjudicated lands, and not presently under mineral lease on October 8, 2003, situated in Cameron Parish, Louisiana, and more particularly described as follows: Beginning at a point having Coordinates of X = 1,226,200.99 and Y = 466,894.24; thence North 4,625.76 feet to a point having Coordinates of X = 1,226,200.99 and Y = 471,520.00; thence East 7,326.60 feet to a point having Coordinates of X = 1,233,527.59 and Y = 471,520.00; thence South 4,625.76 feet to a point having Coordinates of X = 1,233,527.59 and Y = 466,894.24; thence West 7,326.60 feet to the point of beginning, containing approximately **485.40 acres**, all as more particularly outlined on a plat on file in the Office of Mineral Resources, Department of Natural Resources. All bearings, distances and coordinates are based on Louisiana Coordinate System of 1927, (North or South Zone), where applicable.

NOTE: The above description of the Tract nominated for lease has been provided and corrected, where required, exclusively by the nomination party. Any mineral lease selected from this Tract and awarded by the Louisiana State Mineral Board shall be without warranty of any kind, either express, implied, or statutory, including, but not limited to, the implied warranties of merchantability and fitness for a particular purpose. Should the mineral lease awarded by the Louisiana State Mineral Board be subsequently modified, cancelled or abrogated due to the existence of conflicting leases, operating agreements, private claims or other future obligations or conditions which may affect all or any portion of the leased Tract, it shall not relieve the Lessee of the obligation to pay any bonus due thereon to the Louisiana State Mineral Board, nor shall the Louisiana State Mineral Board be obligated to refund any consideration paid by the Lessor prior to such modification, cancellation, or abrogation, including, but not limited to, bonuses, rentals and royalties.

NOTE: The State of Louisiana does hereby reserve, and this lease shall be subject to, the imprescriptible right of surface use in the nature of a servitude in favor of the Department of Natural Resources, including its Offices and Commissions, for the sole purpose of implementing, constructing, servicing and maintaining approved coastal zone management and/or restoration projects. Utilization of any and all rights derived under this lease by the mineral lessee, its agents, successors or assigns, shall not interfere with nor hinder the reasonable surface use by the Department of Natural Resources, its Offices or Commissions, as herein above reserved.

Applicant: Cypress Energy Corporation

Bidder	Cash Payment	Price/ Acre	Rental	Oil	Gas	Other

