

TRACT 34953 - Portion of Block 7, West Cameron Area, Revised, Cameron Parish, Louisiana

That portion of Block 7, West Cameron Area, Revised, Cameron Parish, Louisiana, belonging to the State of Louisiana and not presently under mineral lease on October 9, 2002, being more fully described as follows: Beginning at a the Northeast corner of said Block 7, West Cameron Area, Revised, said corner also being a point on the coastline as established by the 1975 Court Decree, having Coordinates of X = 1,347,177.57 and Y = 405,200.53; thence South 4,200.53 feet along the East line of said Block 7 to a point having Coordinates of X = 1,347,177.57 and Y = 401,000.00; thence West 14,758.05 feet to a point on the West line of said Block 7 having Coordinates of X = 1,332,419.52 and Y = 401,000.00; thence North 5,947.84 feet along the West line of said Block 7 to its Northwest corner, having Coordinates of X = 1,332,419.52 and Y = 406,947.84; thence Southeasterly in a straight line along said coastline, also being the North line of said Block 7, to a point having Coordinates of X = 1,333,745 and Y = 406,888; thence Southeasterly in a straight line along said coastline, also being the North line of said Block 7 to a point having Coordinates of X = 1,341,917 and Y = 405,967; thence Southeasterly in a straight line along said coastline, also being the North line of said Block 7 to the point of beginning, containing approximately **1,751.86 acres**, all as more particularly outlined on a plat on file in the Office of Mineral Resources, Department of Natural Resources, as provided by the applicant. All bearings, distances and coordinates are based on Louisiana Coordinate System of 1927, (North or South Zone).

NOTE: The above description of the Tract nominated for lease has been provided and corrected, where required, exclusively by the nomination party. Any mineral lease selected from this Tract and awarded by the Louisiana State Mineral Board shall be without warranty of any kind, either express, implied, or statutory, including, but not limited to, the implied warranties of merchantability and fitness for a particular purpose. Should the mineral lease awarded by the Louisiana State Mineral Board be subsequently modified, cancelled or abrogated due to the existence of conflicting leases, operating agreements, private claims or other future obligations or conditions which may affect all or any portion of the leased Tract, it shall not relieve the Lessee of the obligation to pay any bonus due thereon to the Louisiana State Mineral Board, nor shall the Louisiana State Mineral Board be obligated to refund any consideration paid by the Lessor prior to such modification, cancellation, or abrogation, including, but not limited to, bonuses, rentals and royalties.

NOTE: The State of Louisiana does hereby reserve, and this lease shall be subject to, the imprescriptible right of surface use in the nature of a servitude in favor of the Department of Natural Resources, including its Offices and Commissions, for the sole purpose of implementing, constructing, servicing and maintaining approved coastal zone management and/or restoration projects. Utilization of any and all rights derived under this lease by the mineral lessee, its agents, successors or assigns, shall not interfere with nor hinder the reasonable surface use by the

Department of Natural Resources, its Offices or Commissions, as herein above reserved.

Applicant: Allen & Kirmse, Ltd.

Bidder	Cash Payment	Price / Acre	Rental	Oil	Gas	Other

T15S-R10W

GAS FIELD

P.O.B.

X= 1,347,177.57
Y= 405,200.53

Hollynd

BM 5

BM 3

BM

TR 34953
1,751.86 ± ACS.
OCT., 2002

O F M E X I C O

BLOCK 8

WEST CAMERON AREA

REVISED

BLOCK 7

BLOCK 6



TRACT 34954 - Portion of Block 7, West Cameron Area, Revised, Cameron Parish, Louisiana

That portion of Block 7, West Cameron Area, Revised, Cameron Parish, Louisiana, belonging to the State of Louisiana and not presently under mineral lease on October 9, 2002, being more fully described as follows: Beginning at the Southeast corner of said Block 7, West Cameron Area, Revised, having Coordinates of X = 1,347,177.57 and Y = 393,790.24; thence West 14,758.05 feet along the South boundary of said Block 7 to its Southwest corner having Coordinates of X = 1,332,419.52 and Y = 393,790.24; thence North 7,209.76 feet along the West boundary of said Block 7 to a point having Coordinates of X = 1,332,419.52 and Y = 401,000.00; thence East 14,758.05 feet to a point on the East boundary of said Block 7 having Coordinates of X = 1,347,177.57 and Y = 401,000.00; thence South 7,209.76 feet along the said East boundary of said Block 7 to the point of beginning, containing approximately **2,442.65 acres**, all as more particularly outlined on a plat on file in the Office of Mineral Resources, Department of Natural Resources, as provided by the applicant. All bearings, distances and coordinates are based on Louisiana Coordinate System of 1927, (North or South Zone).

NOTE: The above description of the Tract nominated for lease has been provided and corrected, where required, exclusively by the nomination party. Any mineral lease selected from this Tract and awarded by the Louisiana State Mineral Board shall be without warranty of any kind, either express, implied, or statutory, including, but not limited to, the implied warranties of merchantability and fitness for a particular purpose. Should the mineral lease awarded by the Louisiana State Mineral Board be subsequently modified, cancelled or abrogated due to the existence of conflicting leases, operating agreements, private claims or other future obligations or conditions which may affect all or any portion of the leased Tract, it shall not relieve the Lessee of the obligation to pay any bonus due thereon to the Louisiana State Mineral Board, nor shall the Louisiana State Mineral Board be obligated to refund any consideration paid by the Lessor prior to such modification, cancellation, or abrogation, including, but not limited to, bonuses, rentals and royalties.

NOTE: The State of Louisiana does hereby reserve, and this lease shall be subject to, the imprescriptible right of surface use in the nature of a servitude in favor of the Department of Natural Resources, including its Offices and Commissions, for the sole purpose of implementing, constructing, servicing and maintaining approved coastal zone management and/or restoration projects. Utilization of any and all rights derived under this lease by the mineral lessee, its agents, successors or assigns, shall not interfere with nor hinder the reasonable surface use by the Department of Natural Resources, its Offices or Commissions, as herein above reserved.

Applicant: Allen & Kirmse, Ltd.

Bidder	Cash Payment	Price / Acre	Rental	Oil	Gas	Other

BLOCK 7

WEST CAMERON AREA, REVISED

BLOCK 8

BLOCK 6

TR 34954
2,442.65 ± ACS.
OCT., 2002

BLOCK 23

BLOCK 24

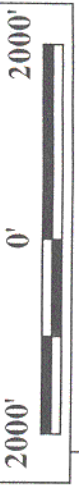
BLOCK 25

CAMERON PARISH



P.O.B.
X= 1,347,177.57'
Y= 393,790.24'

12



TRACT 34955 - Portion of Block 24, West Cameron Area, Revised, Cameron Parish, Louisiana

That portion of Block 24, West Cameron Area, Revised, Cameron Parish, Louisiana, belonging to the State of Louisiana and not presently under mineral lease on October 9, 2002, being more fully described as follows: Beginning at a the Northeast corner of said Block 24, West Cameron Area, Revised, having Coordinates of X = 1,347,177.57 and Y = 393,790.24; thence South 7,023.29 feet along the East line of said Block 24 to a point on the Three Mile Line as established by the 1975 Court Decree having Coordinates of X = 1347,177.57 and Y = 386,766.95; thence Northwesterly in a straight line along said Three Mile Line to a point having Coordinates of X = 1,339,580 and Y = 387,874; thence Northwesterly in a straight line along said Three Mile Line to a point on the West line of said Block 24 having Coordinates of X = 1,332,419.52 and Y = 388,681.65; thence North 5,108.59 feet along the West line of said Block 24 to its Northwest corner having Coordinates of X = 1,332,419.52 and Y = 393,790.24; thence East 14,758.05 feet to the point of beginning, containing approximately **2,034.57 acres, LESS AND EXCEPT** that portion thereof, if any, lying seaward of the line three nautical miles from the coast line of Louisiana, as said three mile line has been decreed by the Supreme Court of the United States, as determined by a Special Master appointed therein, in litigation styled **United States v. State of Louisiana et al No. 9 Original**, in 1975, all as more particularly outlined on a plat on file in the Office of Mineral Resources, Department of Natural Resources, as provided by the applicant. All bearings, distances and coordinates are based on Louisiana Coordinate System of 1927, (North or South Zone).

NOTE: The above description of the Tract nominated for lease has been provided and corrected, where required, exclusively by the nomination party. Any mineral lease selected from this Tract and awarded by the Louisiana State Mineral Board shall be without warranty of any kind, either express, implied, or statutory, including, but not limited to, the implied warranties of merchantability and fitness for a particular purpose. Should the mineral lease awarded by the Louisiana State Mineral Board be subsequently modified, cancelled or abrogated due to the existence of conflicting leases, operating agreements, private claims or other future obligations or conditions which may affect all or any portion of the leased Tract, it shall not relieve the Lessee of the obligation to pay any bonus due thereon to the Louisiana State Mineral Board, not shall the Louisiana State Mineral Board be obligated to refund any consideration paid by the Lessor prior to such modification, cancellation, or abrogation, including, but not limited to, bonuses, rentals and royalties.

NOTE: The State of Louisiana does hereby reserve, and this lease shall be subject to, the imprescriptible right of surface use in the nature of a servitude in favor of the Department of Natural Resources, including its Offices and Commissions, for the sole purpose of implementing, constructing, servicing and maintaining approved coastal zone management and/or restoration projects. Utilization of any and all rights derived under this lease by the mineral lessee, its agents, successors or assigns,

shall not interfere with nor hinder the reasonable surface use by the Department of Natural Resources, its Offices or Commissions, as herein above reserved.

Applicant: Allen & Kirmse, Ltd.

Bidder	Cash Payment	Price / Acre	Rental	Oil	Gas	Other

BLOCK 8

BLOCK 7

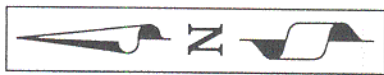
WEST CAMERON AREA

REVISED

BLOCK 6

P.O.B.	
X=	1,347,177.57'
Y=	393,790.24'

TR 34955
2,034.57 ± ACS.
OCT., 2002



BLOCK 25

LA

USA

BLOCK 24

BLOCK 23

CAMERON PARISH

THREE MILE LINE

15



TRACT 34956 - Portion of Block 6, West Cameron Area, Revised, Cameron Parish, Louisiana

That portion of Block 6, West Cameron Area, Revised, Cameron Parish, Louisiana, belonging to the State of Louisiana and not presently under mineral lease on October 9, 2002, being more fully described as follows: Beginning at a the Northwest corner of said Block 6, West Cameron Area, Revised, said corner also being a point on the coastline as established by the 1975 Court Decree, having Coordinates of X = 1,347,177.57 and Y = 405,200.53; thence Southeasterly in a straight line along said coastline, also being the North line of said Block 6, to a point having Coordinates of X = 1,351,162 and Y = 404,620; thence Southeasterly in a straight line along said coastline, also being the North line of said Block 6, to a point having Coordinates of X = 1,354,310 and Y = 403,875; thence Southeasterly in a straight line along said coastline, also being the North line of said Block 6, to a point having Coordinates of X = 1,357,913 and Y = 403,182; thence Southeasterly in a straight line along said coastline, also being the North line of said Block 6, to a point having Coordinates of X = 1,360,638 and Y = 402,221; thence Northeasterly in a straight line along said coastline, also being the North line of said Block 6, to a point having Coordinates of X = 1,361,811 and Y = 402,655; thence Southeasterly in a straight line along said coastline to a point on the East line of said Block 6 having Coordinates of X = 1,361,935.62 and Y = 401,659.51; thence South 659.51 feet along the East line of said Block 6, to a point having Coordinates of X = 1,361,935.62 and Y = 401,000.00; thence West 14,758.05 feet to a point on the West line of said Block 6 having Coordinates of X = 1,347,177.57 and Y = 401,000.00; thence North 4,200.53 feet to the point of beginning, containing approximately **949.98 acres**, all as more particularly outlined on a plat on file in the Office of Mineral Resources, Department of Natural Resources, as provided by the applicant. All bearings, distances and coordinates are based on Louisiana Coordinate System of 1927, (North or South Zone).

NOTE: The above description of the Tract nominated for lease has been provided and corrected, where required, exclusively by the nomination party. Any mineral lease selected from this Tract and awarded by the Louisiana State Mineral Board shall be without warranty of any kind, either express, implied, or statutory, including, but not limited to, the implied warranties of merchantability and fitness for a particular purpose. Should the mineral lease awarded by the Louisiana State Mineral Board be subsequently modified, cancelled or abrogated due to the existence of conflicting leases, operating agreements, private claims or other future obligations or conditions which may affect all or any portion of the leased Tract, it shall not relieve the Lessee of the obligation to pay any bonus due thereon to the Louisiana State Mineral Board, not shall the Louisiana State Mineral Board be obligated to refund any consideration paid by the Lessor prior to such modification, cancellation, or abrogation, including, but not limited to, bonuses, rentals and royalties.

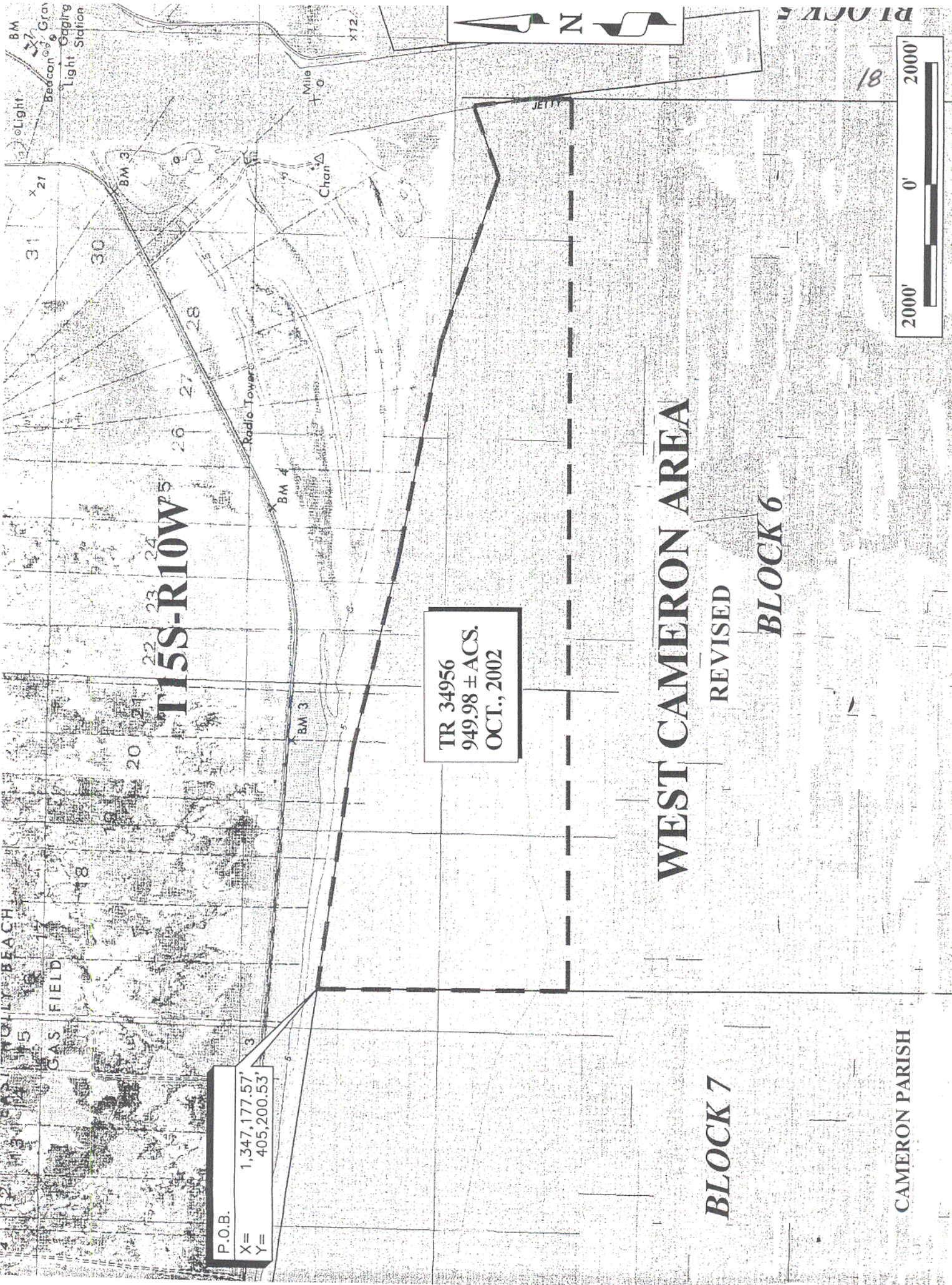
NOTE: It appears, according to our records, that a portion of this Tract is located within the restrictive safety fairway area as set out by the

Corps of Engineers, U.S. Army and/or the restrictive anchorage area as set out by the U.S. Coast Guard.

NOTE: The State of Louisiana does hereby reserve, and this lease shall be subject to, the imprescriptible right of surface use in the nature of a servitude in favor of the Department of Natural Resources, including its Offices and Commissions, for the sole purpose of implementing, constructing, servicing and maintaining approved coastal zone management and/or restoration projects. Utilization of any and all rights derived under this lease by the mineral lessee, its agents, successors or assigns, shall not interfere with nor hinder the reasonable surface use by the Department of Natural Resources, its Offices or Commissions, as herein above reserved.

Applicant: Allen & Kirmse, Ltd.

Bidder	Cash Payment	Price / Acre	Rental	Oil	Gas	Other



BM 37
Beacon
Light
Gaging
Station

31
30
29
28
27
26
25
24
23
22
21
20
19
18
17
16
15
14
13
12
11
10
9
8
7
6
5
4
3
2
1

Radio Tower
Cham
Mile
Jett

BM 3
BM 4

Gas Field
Beach

T15S-R10W

TR 34956
949.98 ± ACS.
OCT., 2002

WEST CAMERON AREA
BLOCK 6

2000' 0' 2000'

18

P.O.B.
X= 1,347,177.57'
Y= 405,200.53'

TRACT 34957 - Portion of Block 6, West Cameron Area, Revised, Cameron Parish, Louisiana

That portion of Block 6, West Cameron Area, Revised, Cameron Parish, Louisiana, belonging to the State of Louisiana and not presently under mineral lease on October 9, 2002, being more fully described as follows: Beginning at the Southwest corner of said Block 6, West Cameron Area, Revised, having Coordinates of X = 1,347,177.57 and Y = 393,790.24; thence North 7,209.76 feet along the West boundary of said Block 6 to a point having Coordinates of X = 1,347,177.57 and Y = 401,000.00; thence East 14,758.05 feet to a point on the East boundary of said Block 6 having Coordinates of X = 1,361,935.62 and Y = 401,000.00; thence South 7,209.76 feet along the said East boundary of Block 6 to its Southeast corner having Coordinates of X = 1,361,935.62 and Y = 393,790.24; thence West 14,758.05 feet along the South boundary of said Block 6 to the point of beginning, containing approximately **2,442.65 acres**, all as more particularly outlined on a plat on file in the Office of Mineral Resources, Department of Natural Resources, as provided by the applicant. All bearings, distances and coordinates are based on Louisiana Coordinate System of 1927, (North or South Zone).

NOTE: The above description of the Tract nominated for lease has been provided and corrected, where required, exclusively by the nomination party. Any mineral lease selected from this Tract and awarded by the Louisiana State Mineral Board shall be without warranty of any kind, either express, implied, or statutory, including, but not limited to, the implied warranties of merchantability and fitness for a particular purpose. Should the mineral lease awarded by the Louisiana State Mineral Board be subsequently modified, cancelled or abrogated due to the existence of conflicting leases, operating agreements, private claims or other future obligations or conditions which may affect all or any portion of the leased Tract, it shall not relieve the Lessee of the obligation to pay any bonus due thereon to the Louisiana State Mineral Board, nor shall the Louisiana State Mineral Board be obligated to refund any consideration paid by the Lessor prior to such modification, cancellation, or abrogation, including, but not limited to, bonuses, rentals and royalties.

NOTE: It appears, according to our records, that a portion of this Tract is located within the restrictive safety fairway area as set out by the Corps of Engineers, U.S. Army and/or the restrictive anchorage area as set out by the U.S. Coast Guard.

NOTE: The State of Louisiana does hereby reserve, and this lease shall be subject to, the imprescriptible right of surface use in the nature of a servitude in favor of the Department of Natural Resources, including its Offices and Commissions, for the sole purpose of implementing, constructing, servicing and maintaining approved coastal zone management and/or restoration projects. Utilization of any and all rights derived under this lease by the mineral lessee, its agents, successors or assigns, shall not interfere with nor hinder the reasonable surface use by the Department of Natural Resources, its Offices or Commissions, as herein above reserved.

Applicant: Allen & Kirmse, Ltd.

Bidder	Cash Payment	Price / Acre	Rental	Oil	Gas	Other

BLOCK 6

TR 34957
2,442.65 ± ACS.
OCT., 2002

BLOCK 7

WEST CAMERON AREA

REVISED

BLOCK 25

BLOCK 24

CAMERON PARISH

P.O.B.
X= 1,347,177.57'
Y= 393,790.24'

BLOCK 5

BLOCK 26

12

2000' 0' 2000'



TRACT 34958 - Portion of Block 25, West Cameron Area, Revised, Cameron Parish, Louisiana

That portion of Block 25, West Cameron Area, Revised, Cameron Parish, Louisiana, belonging to the State of Louisiana and not presently under mineral lease on October 9, 2002, being more fully described as follows: Beginning at the Northwest corner of said Block 25, West Cameron Area, Revised, having Coordinates of X = 1,347,177.57 and Y = 393,790.24; thence East 14,758.05 feet along the North boundary of said Block 25 to its Northeast corner having Coordinates of X = 1,361,935.62 and Y = 393,790.24; thence South 6,990.24 feet along the East boundary of said Block 25 to a point having Coordinates of X = 1,361,935.62 and Y = 386,800.00; thence West 14,758.05 feet to a point on the West boundary of said Block 25 having Coordinates of X = 1,347,177.57 and Y = 386,800.00; thence North 6,990.24 feet along the said West boundary of said Block 25 to the point of beginning, containing approximately **2,368.28 acres, LESS AND EXCEPT** that portion thereof, if any, lying seaward of the line three nautical miles from the coast line of Louisiana, as said three mile line has been decreed by the Supreme Court of the United States, as determined by a Special Master appointed therein, in litigation styled **United States v. State of Louisiana et al No. 9 Original**, in 1975, all as more particularly outlined on a plat on file in the Office of Mineral Resources, Department of Natural Resources, as provided by the applicant. All bearings, distances and coordinates are based on Louisiana Coordinate System of 1927, (North or South Zone).

NOTE: The above description of the Tract nominated for lease has been provided and corrected, where required, exclusively by the nomination party. Any mineral lease selected from this Tract and awarded by the Louisiana State Mineral Board shall be without warranty of any kind, either express, implied, or statutory, including, but not limited to, the implied warranties of merchantability and fitness for a particular purpose. Should the mineral lease awarded by the Louisiana State Mineral Board be subsequently modified, cancelled or abrogated due to the existence of conflicting leases, operating agreements, private claims or other future obligations or conditions which may affect all or any portion of the leased Tract, it shall not relieve the Lessee of the obligation to pay any bonus due thereon to the Louisiana State Mineral Board, nor shall the Louisiana State Mineral Board be obligated to refund any consideration paid by the Lessor prior to such modification, cancellation, or abrogation, including, but not limited to, bonuses, rentals and royalties.

NOTE: It appears, according to our records, that a portion of this Tract is located within the restrictive safety fairway area as set out by the Corps of Engineers, U.S. Army and/or the restrictive anchorage area as set out by the U.S. Coast Guard.

NOTE: The State of Louisiana does hereby reserve, and this lease shall be subject to, the imprescriptible right of surface use in the nature of a servitude in favor of the Department of Natural Resources, including its Offices and Commissions, for the sole purpose of implementing,

constructing, servicing and maintaining approved coastal zone management and/or restoration projects. Utilization of any and all rights derived under this lease by the mineral lessee, its agents, successors or assigns, shall not interfere with nor hinder the reasonable surface use by the Department of Natural Resources, its Offices or Commissions, as herein above reserved.

Applicant: Allen & Kirmse, Ltd.

Bidder	Cash Payment	Price / Acre	Rental	Oil	Gas	Other

BLOCK 7

P.O.B.	
X=	1,347,177.57'
Y=	393,790.24'

BLOCK 6

WEST CAMERON AREA
REVISED

TR 34958
2,368.28 ± ACS.
OCT., 2002

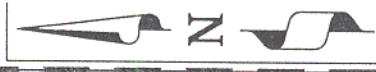
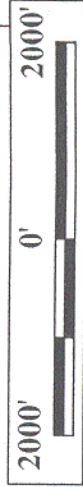
BLOCK 24

CAMERON PARISH

BLOCK 25

THREE MILE LINE LA
USA

24



BLOCK 26

BLOCK 5

TRACT 34959 - Portion of Block 25, West Cameron Area, Revised, Cameron Parish, Louisiana

That portion of Block 25, West Cameron Area, Revised, Cameron Parish, Louisiana, belonging to the State of Louisiana and not presently under mineral lease on October 9, 2002, being more fully described as follows: Beginning at a point on the East line of said Block 25, West Cameron Area, Revised, having Coordinates of X = 1,361,935.62 and Y = 386,800.00; thence South 7,212.27 feet along the said East line of said Block 25 to a point on the Three Mile Line as established by the 1975 Court Decree having Coordinates of X = 1,361,935.62 and Y = 379,587.73; thence Northwesterly on an arc curving to the right having a radius of 18,240.60 feet along said Three Mile Line to a point having Coordinates of X = 1,348,021 and Y = 386,619; thence Northwesterly 288.65 feet in a straight line along said Three Mile Line to a point having Coordinates of X = 1,347,740 and Y = 386,685; thence Northwesterly 568.37 feet along said Three Mile Line to a point on the West line of said Block 25 having Coordinates of X = 1,347,177.57 and Y = 386,766.95; thence North 33.05 feet along the said West line of said Block 25 to a point having Coordinates of X = 1,347,177.57 and Y = 386,800.00; thence West 14,758.05 feet to the point of beginning, containing approximately **1,604.36 acres, LESS AND EXCEPT** that portion thereof, if any, lying seaward of the line three nautical miles from the coast line of Louisiana, as said three mile line has been decreed by the Supreme Court of the United States, as determined by a Special Master appointed therein, in litigation styled **United States v. State of Louisiana et al No. 9 Original**, in 1975, all as more particularly outlined on a plat on file in the Office of Mineral Resources, Department of Natural Resources, as provided by the applicant. All bearings, distances and coordinates are based on Louisiana Coordinate System of 1927, (North or South Zone).

NOTE: The above description of the Tract nominated for lease has been provided and corrected, where required, exclusively by the nomination party. Any mineral lease selected from this Tract and awarded by the Louisiana State Mineral Board shall be without warranty of any kind, either express, implied, or statutory, including, but not limited to, the implied warranties of merchantability and fitness for a particular purpose. Should the mineral lease awarded by the Louisiana State Mineral Board be subsequently modified, cancelled or abrogated due to the existence of conflicting leases, operating agreements, private claims or other future obligations or conditions which may affect all or any portion of the leased Tract, it shall not relieve the Lessee of the obligation to pay any bonus due thereon to the Louisiana State Mineral Board, nor shall the Louisiana State Mineral Board be obligated to refund any consideration paid by the Lessor prior to such modification, cancellation, or abrogation, including, but not limited to, bonuses, rentals and royalties.

NOTE: It appears, according to our records, that a portion of this Tract is located within the restrictive safety fairway area as set out by the Corps of Engineers, U.S. Army and/or the restrictive anchorage area as set out by the U.S. Coast Guard.

NOTE: The State of Louisiana does hereby reserve, and this lease shall be subject to, the imprescriptible right of surface use in the nature of a servitude in favor of the Department of Natural Resources, including its Offices and Commissions, for the sole purpose of implementing, constructing, servicing and maintaining approved coastal zone management and/or restoration projects. Utilization of any and all rights derived under this lease by the mineral lessee, its agents, successors or assigns, shall not interfere with nor hinder the reasonable surface use by the Department of Natural Resources, its Offices or Commissions, as herein above reserved.

Applicant: Allen & Kirmse, Ltd.

Bidder	Cash Payment	Price / Acre	Rental	Oil	Gas	Other

P.O.B.

X= 1,361,935.62'
Y= 386,800.00'



BLOCK 26

THREE MILE LINE

BLOCK 39

27



BLOCK 25

WEST CAMERON AREA

REVISED

TR 34959
1,604.36 ± ACS.
OCT., 2002

LA
USA

BLOCK 40

CAMERON PARISH

BLOCK 24

TRACT 34960 - Portion of Block 5, West Cameron Area, Revised, Cameron Parish, Louisiana

That portion of Block 5, West Cameron Area, Revised, Cameron Parish, Louisiana, belonging to the State of Louisiana and not presently under mineral lease on October 9, 2002, being more fully described as follows: Beginning at a the Northeast corner of Block 5, West Cameron Area, Revised, said corner also being a point on the coastline as established by the 1975 Court Decree, having Coordinates of X = 1,377,295.42 and Y = 408,078.03; thence South 7,078.03 feet along the East line of said Block 5 to a point having Coordinates of X = 1,377,295.42 and Y = 401,000.00; thence West 14,262.94 feet to a point on the said coastline having Coordinates of X = 1,363,032.48 and Y = 401,000.00; thence Northwesterly in a straight line along said coastline to a point, said line also being a point on the West line of said Block 5 having Coordinates of X = 1,362,688 and Y = 403,999; thence Northeasterly in a straight line along said coastline, also being the North line of said Block 5, to a point having Coordinates of X = 1,366,193 and Y = 405,206; thence Northeasterly in a straight line along said coastline, also being the North line of said Block 5, to a point having Coordinates of X = 1,367,814 and Y = 405,588; thence Northeasterly in a straight line along said coastline, also being the North line of said Block 5, to a point having Coordinates of X = 1,370,738 and Y = 406,417; thence Northeasterly in a straight line along said coastline, also being the North line of said Block 5, to a point having Coordinates of X = 1,372,945 and Y = 406,862; thence Northeasterly in a straight line along said coastline, also being the North line of said Block 5, to a point having Coordinates of X = 1,376,515 and Y = 407,966; thence Northeasterly in a straight line along said coastline, also being the North line of said Block 5 to the point of beginning, containing approximately **1,714.64 acres**, all as more particularly outlined on a plat on file in the Office of Mineral Resources, Department of Natural Resources, as provided by the applicant. All bearings, distances and coordinates are based on Louisiana Coordinate System of 1927, (North or South Zone).

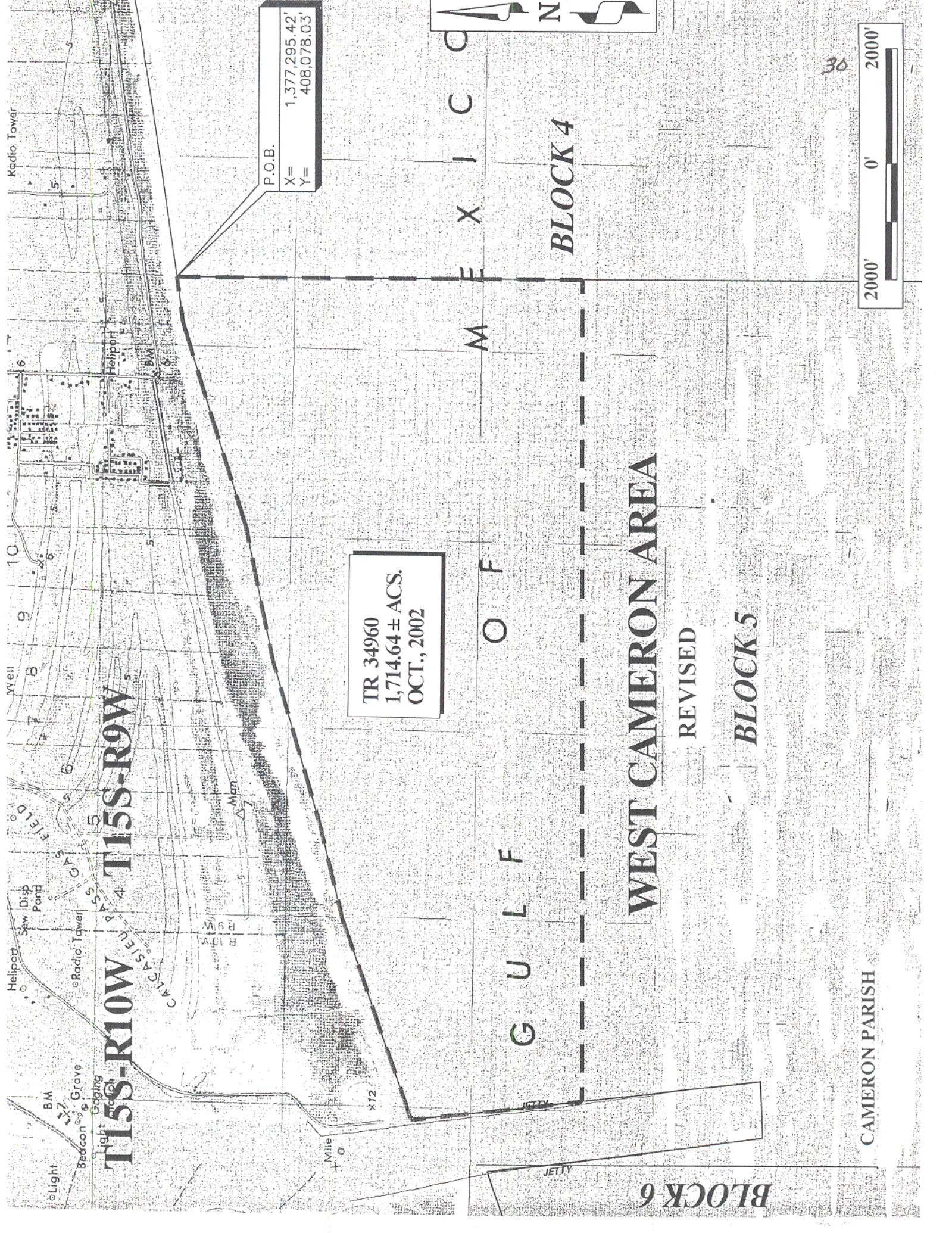
NOTE: The above description of the Tract nominated for lease has been provided and corrected, where required, exclusively by the nomination party. Any mineral lease selected from this Tract and awarded by the Louisiana State Mineral Board shall be without warranty of any kind, either express, implied, or statutory, including, but not limited to, the implied warranties of merchantability and fitness for a particular purpose. Should the mineral lease awarded by the Louisiana State Mineral Board be subsequently modified, cancelled or abrogated due to the existence of conflicting leases, operating agreements, private claims or other future obligations or conditions which may affect all or any portion of the leased Tract, it shall not relieve the Lessee of the obligation to pay any bonus due thereon to the Louisiana State Mineral Board, nor shall the Louisiana State Mineral Board be obligated to refund any consideration paid by the Lessor prior to such modification, cancellation, or abrogation, including, but not limited to, bonuses, rentals and royalties.

NOTE: It appears, according to our records, that a portion of this Tract is located within the restrictive safety fairway area as set out by the Corps of Engineers, U.S. Army and/or the restrictive anchorage area as set out by the U.S. Coast Guard.

NOTE: The State of Louisiana does hereby reserve, and this lease shall be subject to, the imprescriptible right of surface use in the nature of a servitude in favor of the Department of Natural Resources, including its Offices and Commissions, for the sole purpose of implementing, constructing, servicing and maintaining approved coastal zone management and/or restoration projects. Utilization of any and all rights derived under this lease by the mineral lessee, its agents, successors or assigns, shall not interfere with nor hinder the reasonable surface use by the Department of Natural Resources, its Offices or Commissions, as herein above reserved.

Applicant: Allen & Kirmse, Ltd.

Bidder	Cash Payment	Price / Acre	Rental	Oil	Gas	Other



Radio Tower

Heliport

Well

Disposal Pond

Light

Beacon

Grave

Marsh

Jetty

Block 4

Block 5

Block 6

WEST CAMERON AREA

REVISED

CAMERON PARISH

30

2000' 0' 2000'

TR 34960
1,714.64 ± ACS.
OCT., 2002

P.O.B.
X= 1,377,295.42'
Y= 408,078.03'

G U L F O F M E X I C O

T15S-R10W

T15S-R9W

1

2

3

4

5

6

7

8

9

10

11

12

TRACT 34961 - Portion of Block 5, West Cameron Area, Revised, Cameron Parish, Louisiana

That portion of Block 5, West Cameron Area, Revised, Cameron Parish, Louisiana, belonging to the State of Louisiana and not presently under mineral lease on October 9, 2002, being more fully described as follows: Beginning at the Southwest corner of said Block 5, West Cameron Area, Revised, having Coordinates of X = 1,361,935.62 and Y = 393,790.24; thence North 7,869.27 feet along the West boundary of said Block 5 to its Northwest corner, said corner also being on the coastline as established by the 1975 Court Decree, having Coordinates of X = 1,361,935.62 and Y = 401,659.51; thence along said coastline the following courses: Southeasterly in a straight line to a point having Coordinates of X = 1,362,416 and Y = 397,822; Northeasterly in a straight line to a point having Coordinates of X = 1,363,392 and Y = 397,870; Northwesterly in a straight line to a point having Coordinates of X = 1,363,032.48 and Y = 401,000.00; thence East 14,262.94 feet to a point on the East boundary of said Block 5 having Coordinates of X = 1,377,295.42 and Y = 401,000.00; thence South 7,209.76 feet along the said East boundary of Block 5 to its Southeast corner having Coordinates of X = 1,377,295.42 and Y = 393,790.24; thence West 15,359.80 feet along the South boundary of said Block 5 to the point of beginning, containing approximately **2,470.61 acres**, all as more particularly outlined on a plat on file in the Office of Mineral Resources, Department of Natural Resources, as provided by the applicant. All bearings, distances and coordinates are based on Louisiana Coordinate System of 1927, (North or South Zone).

NOTE: The above description of the Tract nominated for lease has been provided and corrected, where required, exclusively by the nomination party. Any mineral lease selected from this Tract and awarded by the Louisiana State Mineral Board shall be without warranty of any kind, either express, implied, or statutory, including, but not limited to, the implied warranties of merchantability and fitness for a particular purpose. Should the mineral lease awarded by the Louisiana State Mineral Board be subsequently modified, cancelled or abrogated due to the existence of conflicting leases, operating agreements, private claims or other future obligations or conditions which may affect all or any portion of the leased Tract, it shall not relieve the Lessee of the obligation to pay any bonus due thereon to the Louisiana State Mineral Board, nor shall the Louisiana State Mineral Board be obligated to refund any consideration paid by the Lessor prior to such modification, cancellation, or abrogation, including, but not limited to, bonuses, rentals and royalties.

NOTE: It appears, according to our records, that a portion of this Tract is located within the restrictive safety fairway area as set out by the Corps of Engineers, U.S. Army and/or the restrictive anchorage area as set out by the U.S. Coast Guard.

NOTE: The State of Louisiana does hereby reserve, and this lease shall be subject to, the imprescriptible right of surface use in the nature of a servitude in favor of the Department of Natural Resources, including its

Offices and Commissions, for the sole purpose of implementing, constructing, servicing and maintaining approved coastal zone management and/or restoration projects. Utilization of any and all rights derived under this lease by the mineral lessee, its agents, successors or assigns, shall not interfere with nor hinder the reasonable surface use by the Department of Natural Resources, its Offices or Commissions, as herein above reserved.

Applicant: Allen & Kirmse, Ltd.

Bidder	Cash Payment	Price / Acre	Rental	Oil	Gas	Other

BLOCK 5
WEST CAMERON AREA

REVISED

BLOCK 6

TR 34961
2,470.61 ± ACS.
OCT., 2002

P.O.B.
X= 1,361,935.62'
Y= 393,790.24'

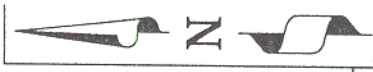
BLOCK 25

BLOCK 26

BLOCK 27

BLOCK 4

CAMERON PARISH



TRACT 34962 - Portion of Block 26, West Cameron Area, Revised, Cameron Parish, Louisiana

That portion of Block 26, West Cameron Area, Revised, Cameron Parish, Louisiana, belonging to the State of Louisiana and not presently under mineral lease on October 9, 2002, being more fully described as follows: Beginning at the Northwest corner of said Block 26, West Cameron Area, Revised, having coordinates of X = 1,361,935.62 and Y = 393,790.24; thence East 14,758.04 feet along the North boundary of said Block 26 to its Northeast corner having Coordinates of X = 1,376,693.66 and Y = 393,790.24; thence South 6,990.24 feet along the East boundary of said Block 26 to a point having Coordinates of X = 1,376,693.66 and Y = 386,800.00; thence West 14,758.04 feet to a point on the West boundary of said Block 26 having Coordinates of X = 1,361,935.62 and Y = 386,800.00; thence North 6,990.24 feet along the said West boundary of said Block 26 to the point of beginning, containing approximately **2,368.28 acres**, all as more particularly outlined on a plat on file in the Office of Mineral Resources, Department of Natural Resources, as provided by the applicant. All bearings, distances and coordinates are based on Louisiana Coordinate System of 1927, (North or South Zone).

NOTE: The above description of the Tract nominated for lease has been provided and corrected, where required, exclusively by the nomination party. Any mineral lease selected from this Tract and awarded by the Louisiana State Mineral Board shall be without warranty of any kind, either express, implied, or statutory, including, but not limited to, the implied warranties of merchantability and fitness for a particular purpose. Should the mineral lease awarded by the Louisiana State Mineral Board be subsequently modified, cancelled or abrogated due to the existence of conflicting leases, operating agreements, private claims or other future obligations or conditions which may affect all or any portion of the leased Tract, it shall not relieve the Lessee of the obligation to pay any bonus due thereon to the Louisiana State Mineral Board, nor shall the Louisiana State Mineral Board be obligated to refund any consideration paid by the Lessor prior to such modification, cancellation, or abrogation, including, but not limited to, bonuses, rentals and royalties.

NOTE: It appears, according to our records, that a portion of this Tract is located within the restrictive safety fairway area as set out by the Corps of Engineers, U.S. Army and/or the restrictive anchorage area as set out by the U.S. Coast Guard.

NOTE: The State of Louisiana does hereby reserve, and this lease shall be subject to, the imprescriptible right of surface use in the nature of a servitude in favor of the Department of Natural Resources, including its Offices and Commissions, for the sole purpose of implementing, constructing, servicing and maintaining approved coastal zone management and/or restoration projects. Utilization of any and all rights derived under this lease by the mineral lessee, its agents, successors or assigns, shall not interfere with nor hinder the reasonable surface use by the

Department of Natural Resources, its Offices or Commissions, as herein above reserved.

Applicant: Allen & Kirmse, Ltd.

Bidder	Cash Payment	Price / Acre	Rental	Oil	Gas	Other

BLOCK 6

P.O.B.	
X=	1,361,935.62'
Y=	393,790.24'

BLOCK 5

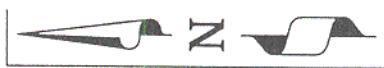
WEST CAMERON AREA
REVISED

TR 34962
2,368.28 ± ACS.
OCT., 2002

BLOCK 25

BLOCK 26

CAMERON PARISH



BLOCK 27



36

TRACT 34963 - Portion of Block 26, West Cameron Area, Revised, Cameron Parish, Louisiana

That portion of Block 26, West Cameron Area, Revised, Cameron Parish, Louisiana, belonging to the State of Louisiana and not presently under mineral lease on October 9, 2002, being more fully described as follows: Beginning at a point on the West line of said Block 26, West Cameron Area, Revised, having Coordinates of X = 1,361,935.62 and Y = 386,800.00; thence East 14,758.04 feet to a point on the East line of said Block 26 having Coordinates of X = 1,376,693.66 and Y = 386,800.00; thence South 1,411.40 feet along the said East line of Block 26 to a point on Three Mile Line as established by the 1975 Court Decree having Coordinates of X = 1,376,693.66 and Y = 385,388.60; thence Southwesterly on an arc curving to the right having a radius of 18,240.60 feet along said Three Mile Line to a point having Coordinates of X = 1,364,288 and Y = 379,651; thence Southwesterly 977.18 feet in a straight line along said Three Mile Line to a point having Coordinates of X = 1,363,312 and Y = 379,603; thence Southwesterly on an arc curving to the right having a radius of 18,240.60 feet along said Three Mile Line to a point on the West line of said Block 26 having Coordinates of X = 1,361,935.62 and Y = 379,587.73; thence North 7,212.27 feet along the West line of said Block 26 to the point of beginning, containing approximately **1,887.64 acres, LESS AND EXCEPT** that portion thereof, if any, lying seaward of the line three nautical miles from the coast line of Louisiana, as said three mile line has been decreed by the Supreme Court of the United States, as determined by a Special Master appointed therein, in litigation styled **United States v. State of Louisiana et al No. 9 Original**, in 1975, all as more particularly outlined on a plat on file in the Office of Mineral Resources, Department of Natural Resources, as provided by the applicant. All bearings, distances and coordinates are based on Louisiana Coordinate System of 1927, (North or South Zone).

NOTE: The above description of the Tract nominated for lease has been provided and corrected, where required, exclusively by the nomination party. Any mineral lease selected from this Tract and awarded by the Louisiana State Mineral Board shall be without warranty of any kind, either express, implied, or statutory, including, but not limited to, the implied warranties of merchantability and fitness for a particular purpose. Should the mineral lease awarded by the Louisiana State Mineral Board be subsequently modified, cancelled or abrogated due to the existence of conflicting leases, operating agreements, private claims or other future obligations or conditions which may affect all or any portion of the leased Tract, it shall not relieve the Lessee of the obligation to pay any bonus due thereon to the Louisiana State Mineral Board, nor shall the Louisiana State Mineral Board be obligated to refund any consideration paid by the Lessor prior to such modification, cancellation, or abrogation, including, but not limited to, bonuses, rentals and royalties.

NOTE: It appears, according to our records, that a portion of this Tract is located within the restrictive safety fairway area as set out by the

Corps of Engineers, U.S. Army and/or the restrictive anchorage area as set out by the U.S. Coast Guard.

NOTE: The State of Louisiana does hereby reserve, and this lease shall be subject to, the imprescriptible right of surface use in the nature of a servitude in favor of the Department of Natural Resources, including its Offices and Commissions, for the sole purpose of implementing, constructing, servicing and maintaining approved coastal zone management and/or restoration projects. Utilization of any and all rights derived under this lease by the mineral lessee, its agents, successors or assigns, shall not interfere with nor hinder the reasonable surface use by the Department of Natural Resources, its Offices or Commissions, as herein above reserved.

Applicant: Allen & Kirmse, Ltd.

Bidder	Cash Payment	Price / Acre	Rental	Oil	Gas	Other

BLOCK 27



39



BLOCK 26

WEST CAMERON AREA

REVISED

TR 34963
1,887.64 ± ACS.
OCT., 2002

LA
USA

BLOCK 39

P.O.B.
X= 1,361,935.62'
Y= 386,800.00'

BLOCK 25

THREE MILE LINE

BLOCK 40

CAMERON PARISH

TRACT 34964 - Portion of Block 4, West Cameron Area, Revised, Cameron Parish, Louisiana

That portion of Block 4, West Cameron Area, Revised, Cameron Parish, Louisiana, belonging to the State of Louisiana and not presently under mineral lease on October 9, 2002, being more fully described as follows: Beginning at a the Northeast corner of Block 4, West Cameron Area, Revised, said corner also being a point on the coastline as established by the 1975 Court Decree, having Coordinates of X = 1,391,451.71 and Y = 409,240.45; thence South 8,018.52 feet on the East line of said Block 4 to a point having Coordinates of X = 1,391,451.71 and Y = 401,221.93; thence West 14,156.29 feet to a point on the West line of said Block 4 having Coordinates of X = 1,377, 295.42 and Y = 401,221.93; thence North 6,856.10 feet on the West line of said Block 4 to its Northwest corner, said corner also being a point on the said coastline having Coordinates of X = 1,377,295.42 and Y = 408,078.03; thence Northeasterly in a straight line on said coastline to a point, said line also being the North line of said Block 4 having Coordinates of X = 1,380,235 and Y = 408,500; thence Northeasterly in a straight line on said coastline, said line also being the North line of said Block 4, to a point having Coordinates of X = 1,383,990 and Y = 409,136; thence Northeasterly in a straight line on said coastline, said line also being the North line of said Block 4, to a point having Coordinates of X = 1,386,636 and Y = 409,216; thence Northeasterly in a straight line on said coastline, also being the North line of said Block 4 to the point of beginning, containing approximately **2,500.00 acres**, all as more particularly outlined on a plat on file in the Office of Mineral Resources, Department of Natural Resources, as provided by the applicant. All bearings, distances and coordinates are based on Louisiana Coordinate System of 1927, (North or South Zone).

NOTE: The above description of the Tract nominated for lease has been provided and corrected, where required, exclusively by the nomination party. Any mineral lease selected from this Tract and awarded by the Louisiana State Mineral Board shall be without warranty of any kind, either express, implied, or statutory, including, but not limited to, the implied warranties of merchantability and fitness for a particular purpose. Should the mineral lease awarded by the Louisiana State Mineral Board be subsequently modified, cancelled or abrogated due to the existence of conflicting leases, operating agreements, private claims or other future obligations or conditions which may affect all or any portion of the leased Tract, it shall not relieve the Lessee of the obligation to pay any bonus due thereon to the Louisiana State Mineral Board, not shall the Louisiana State Mineral Board be obligated to refund any consideration paid by the Lessor prior to such modification, cancellation, or abrogation, including, but not limited to, bonuses, rentals and royalties.

NOTE: The State of Louisiana does hereby reserve, and this lease shall be subject to, the imprescriptible right of surface use in the nature of a servitude in favor of the Department of Natural Resources, including its Offices and Commissions, for the sole purpose of implementing, constructing, servicing and maintaining approved coastal zone management

and/or restoration projects. Utilization of any and all rights derived under this lease by the mineral lessee, its agents, successors or assigns, shall not interfere with nor hinder the reasonable surface use by the Department of Natural Resources, its Offices or Commissions, as herein above reserved.

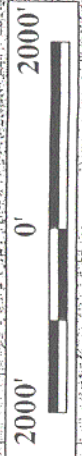
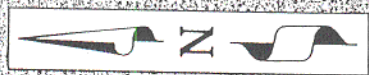
Applicant: Allen & Kirmse, Ltd.

Bidder	Cash Payment	Price / Acre	Rental	Oil	Gas	Other

T15S-R9W

P.O.B.
X= 1,391,451.71'
Y= 409,240.45'

TR 34964
2,500.00 ± ACS.
OCT., 2002



BLOCK 5

F X I C O

BLOCK 4

WEST CAMERON AREA

REVISED

CAMERON PARISH

BLOCK 3

42

TRACT 34965 - Portion of Block 4, West Cameron Area, Revised, Cameron Parish, Louisiana

That portion of Block 4, West Cameron Area, Revised, Cameron Parish, Louisiana, belonging to the State of Louisiana and not presently under mineral lease on October 9, 2002, being more fully described as follows: Beginning at the Southeast corner of said Block 4, West Cameron Area, Revised, having Coordinates of X = 1,391,451.71 and Y = 393,790.24; thence West 14,156.29 feet on the South boundary of said Block 4 to its Southwest corner having Coordinates of X = 1,377,295.42 and Y = 393,790.24; thence North 7,431.69 feet on the West boundary of said Block 4 to a point having Coordinates of X = 1,377,295.42 and Y = 401,221.93; thence East 14,156.29 feet to a point on the East boundary of said Block 4 having Coordinates of X = 1,391,451.71 and Y = 401,221.93; thence South 7,431.69 feet on the said East boundary of Block 4 to the point of beginning, containing approximately **2,415.18 acres**, all as more particularly outlined on a plat on file in the Office of Mineral Resources, Department of Natural Resources, as provided by the applicant. All bearings, distances and coordinates are based on Louisiana Coordinate System of 1927, (North or South Zone).

NOTE: The above description of the Tract nominated for lease has been provided and corrected, where required, exclusively by the nomination party. Any mineral lease selected from this Tract and awarded by the Louisiana State Mineral Board shall be without warranty of any kind, either express, implied, or statutory, including, but not limited to, the implied warranties of merchantability and fitness for a particular purpose. Should the mineral lease awarded by the Louisiana State Mineral Board be subsequently modified, cancelled or abrogated due to the existence of conflicting leases, operating agreements, private claims or other future obligations or conditions which may affect all or any portion of the leased Tract, it shall not relieve the Lessee of the obligation to pay any bonus due thereon to the Louisiana State Mineral Board, nor shall the Louisiana State Mineral Board be obligated to refund any consideration paid by the Lessor prior to such modification, cancellation, or abrogation, including, but not limited to, bonuses, rentals and royalties.

NOTE: The State of Louisiana does hereby reserve, and this lease shall be subject to, the imprescriptible right of surface use in the nature of a servitude in favor of the Department of Natural Resources, including its Offices and Commissions, for the sole purpose of implementing, constructing, servicing and maintaining approved coastal zone management and/or restoration projects. Utilization of any and all rights derived under this lease by the mineral lessee, its agents, successors or assigns, shall not interfere with nor hinder the reasonable surface use by the Department of Natural Resources, its Offices or Commissions, as herein above reserved.

Applicant: Allen & Kirmse, Ltd.

Bidder	Cash Payment	Price / Acre	Rental	Oil	Gas	Other

BLOCK 4

WEST CAMERON AREA

REVISED

BLOCK 5

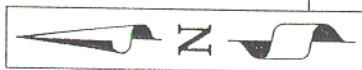
BLOCK 3

TR 34965
2,415.18 ± ACS.
OCT., 2002

P.O.B.

X= 1,391,451.71'

Y= 393,790.24'



BLOCK 28

BLOCK 27

THREE MILE LINE

LA

USA

CAMERON PARISH

BLOCK 26

45°

2000' 0' 2000'



TRACT 34966 - Portion of Block 27, West Cameron Area, Revised, Cameron Parish, Louisiana

That portion of Block 27, West Cameron Area, Revised, Cameron Parish, Louisiana, belonging to the State of Louisiana and not presently under mineral lease on October 9, 2002, being more fully described as follows: Beginning at a the Northeast corner of said Block 27, West Cameron Area, Revised, having Coordinates of X = 1,391,451.71 and Y = 393,790.24; thence South 2,850.79 feet along the East line of said Block 27 to a point on Three Mile Line as established by the 1975 Court Decree having Coordinates of X = 1,391,451.71 and Y = 390,939.45; thence Northwesterly in a straight line along said Three Mile Line to a point having Coordinates of X = 1,390,919 and Y = 390,971; thence Northwesterly on an arc curving to the right with a radius of 18,240.60 along said Three Mile Line to a point having Coordinates of X = 1,390,575 and Y = 390,995; thence Southwesterly in a straight line along said Three Mile Line to a point having Coordinates of X = 1,386,958 and Y = 390,977; thence Southwesterly in a straight line along said Three Mile Line to a point having Coordinates of X = 1,385,797 and Y = 390,942; thence Southwesterly in a straight line along said Three Mile Line to a point having Coordinates of X = 1,383,281 and Y = 390,516; thence Southwesterly on an arc curving to the right with a radius of 18,240.60 along said Three Mile Line to a point having Coordinates of X = 1,382,827 and Y = 390,444; thence Southwesterly in a straight line along said Three Mile Line to a point having Coordinates of X = 1,380,530 and Y = 390,115; thence Southwesterly in a straight line along said Three Mile Line to a point having Coordinates of X = 1,379,793 and Y = 389,887; thence Southwesterly on an arc curving to the right with a radius of 18,240.60 along said Three Mile Line to a point on the West line of said Block 27 having Coordinates of X = 1,376,693.66 and Y = 385,388.60; thence North 8,401.64 feet along the West line of said Block 27 to its Northwest corner having Coordinates of X = 1,376,693.66 and Y = 393,790.24; thence East 14,758.05 feet along the North line of said Block 27 to the point of beginning, containing approximately **1,280.67 acres, LESS AND EXCEPT** that portion thereof, if any, lying seaward of the line three nautical miles from the coast line of Louisiana, as said three mile line has been decreed by the Supreme Court of the United States, as determined by a Special Master appointed therein, in litigation styled **United States v. State of Louisiana et al No. 9 Original**, in 1975, all as more particularly outlined on a plat on file in the Office of Mineral Resources, Department of Natural Resources, as provided by the applicant. All bearings, distances and coordinates are based on Louisiana Coordinate System of 1927, (North or South Zone).

NOTE: The above description of the Tract nominated for lease has been provided and corrected, where required, exclusively by the nomination party. Any mineral lease selected from this Tract and awarded by the Louisiana State Mineral Board shall be without warranty of any kind, either express, implied, or statutory, including, but not limited to, the implied warranties of merchantability and fitness for a particular purpose. Should the mineral lease awarded by the Louisiana State Mineral Board be subsequently modified, cancelled or abrogated due to the

existence of conflicting leases, operating agreements, private claims or other future obligations or conditions which may affect all or any portion of the leased Tract, it shall not relieve the Lessee of the obligation to pay any bonus due thereon to the Louisiana State Mineral Board, not shall the Louisiana State Mineral Board be obligated to refund any consideration paid by the Lessor prior to such modification, cancellation, or abrogation, including, but not limited to, bonuses, rentals and royalties.

NOTE: The State of Louisiana does hereby reserve, and this lease shall be subject to, the imprescriptible right of surface use in the nature of a servitude in favor of the Department of Natural Resources, including its Offices and Commissions, for the sole purpose of implementing, constructing, servicing and maintaining approved coastal zone management and/or restoration projects. Utilization of any and all rights derived under this lease by the mineral lessee, its agents, successors or assigns, shall not interfere with nor hinder the reasonable surface use by the Department of Natural Resources, its Offices or Commissions, as herein above reserved.

Applicant: Allen & Kirmse, Ltd.

Bidder	Cash Payment	Price / Acre	Rental	Oil	Gas	Other

BLOCK 5

BLOCK 4

BLOCK 3

WEST CAMERON AREA

REVISED

TR 34966
1,280.67 ± ACS.
OCT., 2002

P.O.B.

X= 1,391,451.71'
Y= 393,790.24'

LA

USA

THREE MILE LINE

BLOCK 26

BLOCK 27

BLOCK 28

CAMERON PARISH



48



TRACT 34967 - Portion of Block 3, West Cameron Area, Revised, Cameron Parish, Louisiana

That portion of Block 3, West Cameron Area, Revised, Cameron Parish, Louisiana, belonging to the State of Louisiana and not presently under mineral lease on October 9, 2002, being more fully described as follows: Beginning at a the Northwest corner of Block 3, West Cameron Area, Revised, said corner also being a point on the coastline as established by the 1975 Court Decree, having Coordinates of X = 1,391,451.71 and Y = 409,240.45; thence Northeasterly in a straight line on said coastline to a point, said line also being the North line of said Block 3 having Coordinates of X = 1,391,954 and Y = 409,243; thence Southeasterly in a straight line on said coastline to a point, said line also being the North line of said Block 3 having Coordinates of X = 1,392,000 and Y = 409,180; thence Southeasterly in a straight line on said coastline to a point, said line also being the North line of said Block 3 having Coordinates of X = 1,397,220 and Y = 408,870; thence Southeasterly in a straight line on said coastline to a point, said line also being the North line of said Block 3 having Coordinates of X = 1,402,525 and Y = 408,365; thence Southeasterly in a straight line on said coastline, said line also being the North line of Block 3 to its Northeast corner having Coordinates of X = 1,405,806.20 and Y = 407,818.13; thence South 6,735.39 feet on the East line of said Block 3 to a point having Coordinates of X = 1,405,806.20 and Y = 401,082.74; thence West 14,354.49 feet to a point on the West line of said Block 3 having Coordinates of X = 1,391,451.71 and Y = 401,082.74; thence North 8,157.71 feet on the West line of said Block 3 to the point of beginning, containing approximately **2,500.00 acres**, all as more particularly outlined on a plat on file in the Office of Mineral Resources, Department of Natural Resources, as provided by the applicant. All bearings, distances and coordinates are based on Louisiana Coordinate System of 1927, (North or South Zone).

NOTE: The above description of the Tract nominated for lease has been provided and corrected, where required, exclusively by the nomination party. Any mineral lease selected from this Tract and awarded by the Louisiana State Mineral Board shall be without warranty of any kind, either express, implied, or statutory, including, but not limited to, the implied warranties of merchantability and fitness for a particular purpose. Should the mineral lease awarded by the Louisiana State Mineral Board be subsequently modified, cancelled or abrogated due to the existence of conflicting leases, operating agreements, private claims or other future obligations or conditions which may affect all or any portion of the leased Tract, it shall not relieve the Lessee of the obligation to pay any bonus due thereon to the Louisiana State Mineral Board, nor shall the Louisiana State Mineral Board be obligated to refund any consideration paid by the Lessor prior to such modification, cancellation, or abrogation, including, but not limited to, bonuses, rentals and royalties.

NOTE: The State of Louisiana does hereby reserve, and this lease shall be subject to, the imprescriptible right of surface use in the nature of a servitude in favor of the Department of Natural Resources, including its

Offices and Commissions, for the sole purpose of implementing, constructing, servicing and maintaining approved coastal zone management and/or restoration projects. Utilization of any and all rights derived under this lease by the mineral lessee, its agents, successors or assigns, shall not interfere with nor hinder the reasonable surface use by the Department of Natural Resources, its Offices or Commissions, as herein above reserved.

Applicant: Allen & Kirmse, Ltd.

Bidder	Cash Payment	Price / Acre	Rental	Oil	Gas	Other

P.O.B.

X= 1,391,451.71'
Y= 409,240.45'

T15S-R9W

T15S-R8W

TR 34967
2,500.00 ± ACS.
OCT., 2002

BLOCK 4

BLOCK 3

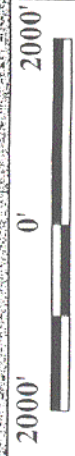
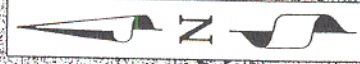
BLOCK 2

G U L F

WEST CAMERON AREA

REVISED

CAMERON PARISH



TRACT 34968 - Portion of Block 3, West Cameron Area, Revised, Cameron Parish, Louisiana

That portion of Block 3, West Cameron Area, Revised, Cameron Parish, Louisiana, belonging to the State of Louisiana and not presently under mineral lease on October 9, 2002, being more fully described as follows: Beginning at the Southwest corner of said Block 3, West Cameron Area, Revised, having Coordinates of X = 1,391,451.71 and Y = 393,790.24; thence North 7,292.50 feet along the West boundary of said Block 3, to a point having Coordinates of X = 1,391,451.71 and Y = 401,082.74; thence East 14,354.49 feet to a point on the East boundary of said Block 3 having Coordinates of X = 1,405,806.20 and Y = 401,082.74; thence South 7,292.50 feet along the said East boundary of Block 3 to its Southeast corner having Coordinates of X = 1,405,806.20 and Y = 393,790.24; thence West 14,354.49 feet along the South boundary of said Block 3 to the point of beginning, containing approximately **2,403.12 acres**, all as more particularly outlined on a plat on file in the Office of Mineral Resources, Department of Natural Resources, as provided by the applicant. All bearings, distances and coordinates are based on Louisiana Coordinate System of 1927, (North or South Zone).

NOTE: The above description of the Tract nominated for lease has been provided and corrected, where required, exclusively by the nomination party. Any mineral lease selected from this Tract and awarded by the Louisiana State Mineral Board shall be without warranty of any kind, either express, implied, or statutory, including, but not limited to, the implied warranties of merchantability and fitness for a particular purpose. Should the mineral lease awarded by the Louisiana State Mineral Board be subsequently modified, cancelled or abrogated due to the existence of conflicting leases, operating agreements, private claims or other future obligations or conditions which may affect all or any portion of the leased Tract, it shall not relieve the Lessee of the obligation to pay any bonus due thereon to the Louisiana State Mineral Board, nor shall the Louisiana State Mineral Board be obligated to refund any consideration paid by the Lessor prior to such modification, cancellation, or abrogation, including, but not limited to, bonuses, rentals and royalties.

NOTE: The State of Louisiana does hereby reserve, and this lease shall be subject to, the imprescriptible right of surface use in the nature of a servitude in favor of the Department of Natural Resources, including its Offices and Commissions, for the sole purpose of implementing, constructing, servicing and maintaining approved coastal zone management and/or restoration projects. Utilization of any and all rights derived under this lease by the mineral lessee, its agents, successors or assigns, shall not interfere with nor hinder the reasonable surface use by the Department of Natural Resources, its Offices or Commissions, as herein above reserved.

Applicant: Allen & Kirmse, Ltd.

Bidder	Cash Payment	Price / Acre	Rental	Oil	Gas	Other

WEST CAMERON AREA, REVISED

BLOCK 3

BLOCK 2

BLOCK 4

TR 34968
2,403.12 ± ACS.
OCT., 2002

P.O.B.
X= 1,391,451.71'
Y= 393,790.24'

BLOCK 27

BLOCK 28

BLOCK 29

THREE MILE LINE

LA

CAMERON PARISH

USA

