

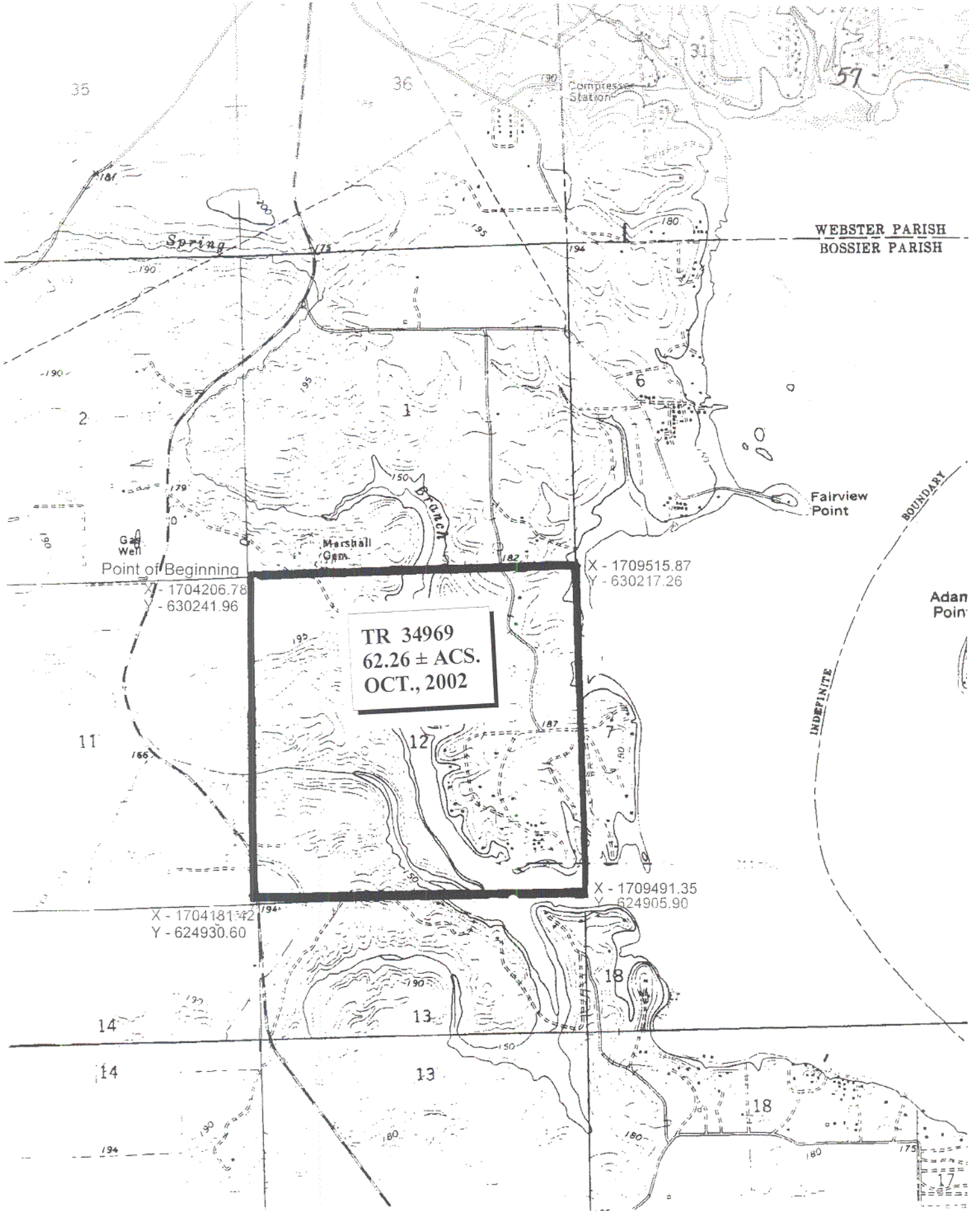
TRACT 34969 - Bossier Parish, Louisiana

All of the lands now or formerly constituting the beds and bottoms of all water bodies of every nature and description, and all islands and other lands formed by accretion, where allowed by law, or by reliction, and excepting tax adjudicated lands, belonging to the State of Louisiana and not presently under mineral lease on October 9, 2002, situated in Bossier Parish, Louisiana, and more particularly described as follows: Beginning at a point having Coordinates of X = 1,704,206.78 and Y = 630,241.96; thence South 89 degrees 44 minutes 00 seconds East 5,309.15 feet to a point having Coordinates of X = 1,709,515.87 and Y = 630,217.26; thence South 00 degrees 15 minutes 52 seconds West 5,311.42 feet to a point having Coordinates of X = 1,709,491.35 and Y = 624,905.90; thence North 89 44 minutes 00 seconds West 5,309.99 feet to a point having Coordinates of X = 1,704,181.42 and Y = 624,930.60; thence North 00 degrees 16 minutes 25 seconds East 5,311.42 feet to the point of beginning, **LESS AND EXCEPT** all that portion of State Lease No. 16833 that lies within the above described tract, containing approximately **62.26 acres**, all as more particularly outlined on a plat on file in the Office of Mineral Resources, Department of Natural Resources, as provided by the applicant. All bearings, distances and coordinates are based on Louisiana Coordinate System of 1927, (North or South Zone), where applicable.

NOTE: The above description of the Tract nominated for lease has been provided and corrected, where required, exclusively by the nomination party. Any mineral lease selected from this Tract and awarded by the Louisiana State Mineral Board shall be without warranty of any kind, either express, implied, or statutory, including, but not limited to, the implied warranties of merchantability and fitness for a particular purpose. Should the mineral lease awarded by the Louisiana State Mineral Board be subsequently modified, cancelled or abrogated due to the existence of conflicting leases, operating agreements, private claims or other future obligations or conditions which may affect all or any portion of the leased Tract, it shall not relieve the Lessee of the obligation to pay any bonus due thereon to the Louisiana State Mineral Board, nor shall the Louisiana State Mineral Board be obligated to refund any consideration paid by the Lessor prior to such modification, cancellation, or abrogation, including, but not limited to, bonuses, rentals and royalties.

Applicant: Bistineau Partners

Bidder	Cash Payment	Price / Acre	Rental	Oil	Gas	Other



1" = 2000'

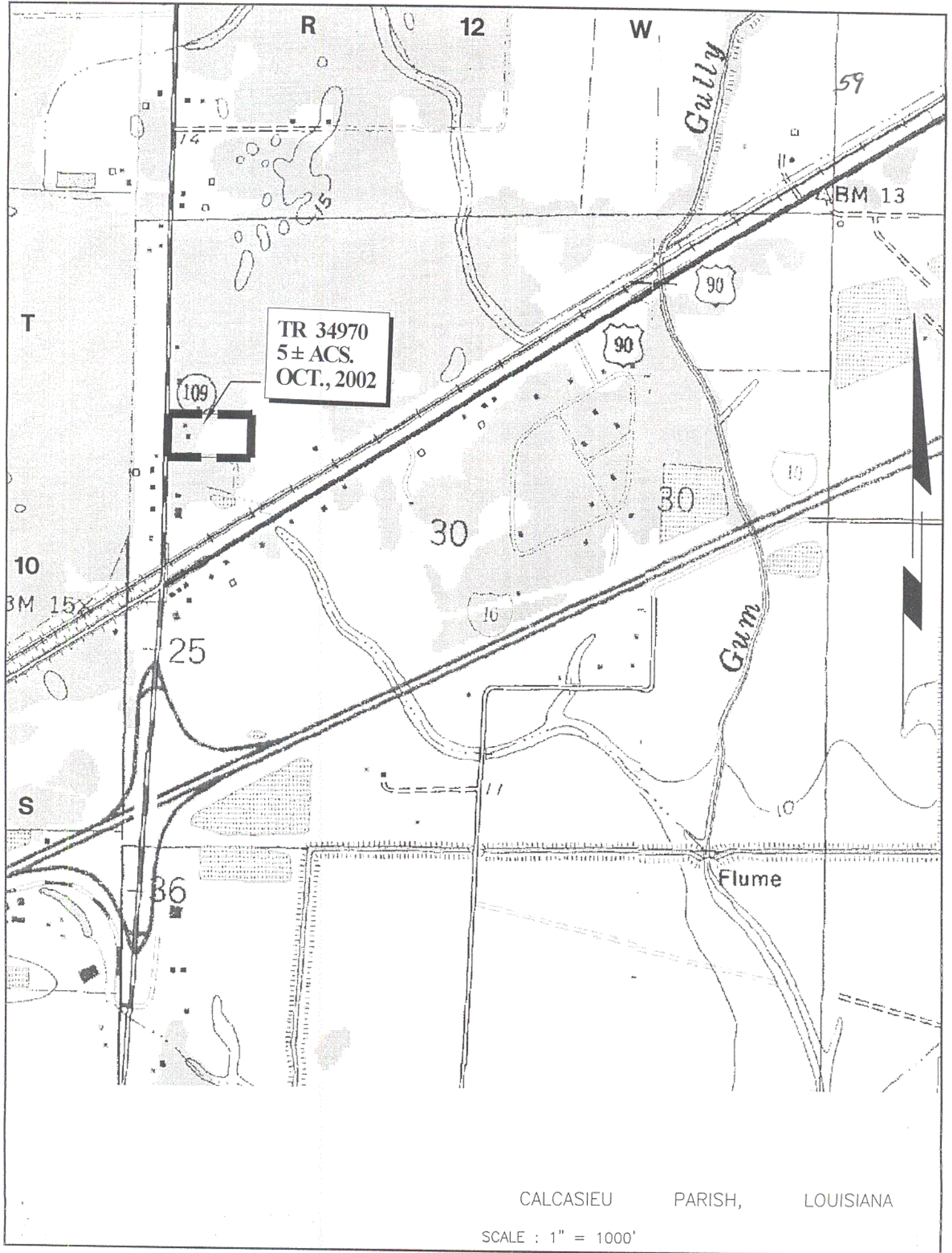
TRACT 34970 - Calcasieu Parish, Louisiana

All of the land adjudicated to and acquired by the State of Louisiana in and through a proper tax sale, as pertaining to mineral rights only, which is not under valid mineral lease from the State of Louisiana on October 9, 2002, situated in Calcasieu Parish, Louisiana, and being more fully described as follows: All of the West five (5) acres of Lot 6 of the F. H. Canter Subdivision, a subdivision of the West Half of the Northwest Quarter (**W/2 NW/4**) of Section 30, Township 10 South, Range 12 West, Calcasieu Parish, Louisiana, adjudicated to the State of Louisiana in the name of Mr. and Mrs. J. P. Davidson for 1939 unpaid taxes and sold to H. F. Eady on March 13, 1943, containing approximately **5 acres**, all as more particularly outlined on a plat on file in the Office of Mineral Resources, Department of Natural Resources, as provided by the applicant. All bearings, distances and coordinates are based on Louisiana Coordinate System of 1927, (North or South Zone), where applicable.

NOTE: The above description of the Tract nominated for lease has been provided and corrected, where required, exclusively by the nomination party. Any mineral lease selected from this Tract and awarded by the Louisiana State Mineral Board shall be without warranty of any kind, either express, implied, or statutory, including, but not limited to, the implied warranties of merchantability and fitness for a particular purpose. Should the mineral lease awarded by the Louisiana State Mineral Board be subsequently modified, cancelled or abrogated due to the existence of conflicting leases, operating agreements, private claims or other future obligations or conditions which may affect all or any portion of the leased Tract, it shall not relieve the Lessee of the obligation to pay any bonus due thereon to the Louisiana State Mineral Board, not shall the Louisiana State Mineral Board be obligated to refund any consideration paid by the Lessor prior to such modification, cancellation, or abrogation, including, but not limited to, bonuses, rentals and royalties.

Applicant: HEP Energy, Inc.

Bidder	Cash Payment	Price / Acre	Rental	Oil	Gas	Other



TRACT 34971 - Cameron Parish, Louisiana

All of the lands now or formerly constituting the beds and bottoms of all water bodies of every nature and description, and all islands and other lands formed by accretion, where allowed by law, or by reliction, and excepting tax adjudicated lands, belonging to the State of Louisiana and not presently under mineral lease on October 9, 2002, situated in Cameron Parish, Louisiana, and more particularly described as follows: Beginning at a the Northwest corner of Block 6, West Cameron Area, Revised, said corner also being a point on the coastline as established by the 1975 Court Decree, having Coordinates of X = 1,347,177.57 and Y = 405,200.53; thence North 3,155.47 feet to a point having Coordinates of X = 1,347,177.57 and Y = 408,356.00; thence East 14,758.05 feet to a point having Coordinates of X = 1,361,935.62 and Y = 408,356.00; thence South 5,510.03 feet to the Northeast corner of said Block 6 having Coordinates of X = 1,361,935.62 and Y = 402,845.97; thence South 1,186.46 feet along the East line of said Block 6 to a point on the said coastline having Coordinates of X = 1,361,935.62 and Y = 401,659.51; thence Northwesterly in a straight line along said coastline, also being the North line of said Block 6, to a point having Coordinates of X = 1,361,811 and Y = 402,655; thence Southwesterly in a straight line along said coastline, also being the North line of said Block 6, to a point having Coordinates of X = 1,360,638 and Y = 402,221; thence Northwesterly in a straight line along said coastline, also being the North line of said Block 6, to a point having Coordinates of X = 1,357,913 and Y = 403,182; thence Northwesterly in a straight line along said coastline, also being the North line of said Block 6, to a point having Coordinates of X = 1,354,310 and Y = 403,875; thence Northwesterly in a straight line along said coastline, also being the North line of said Block 6, to a point having Coordinates of X = 1,351,162 and Y = 404,620; thence Northwesterly in a straight line along said coastline, also being the North line of said Block 6, to the point of beginning, containing approximately **342 acres**, all as more particularly outlined on a plat on file in the Office of Mineral Resources, Department of Natural Resources, as provided by the applicant. All bearings, distances and coordinates are based on Louisiana Coordinate System of 1927, (North or South Zone), where applicable.

NOTE: The above description of the Tract nominated for lease has been provided and corrected, where required, exclusively by the nomination party. Any mineral lease selected from this Tract and awarded by the Louisiana State Mineral Board shall be without warranty of any kind, either express, implied, or statutory, including, but not limited to, the implied warranties of merchantability and fitness for a particular purpose. Should the mineral lease awarded by the Louisiana State Mineral Board be subsequently modified, cancelled or abrogated due to the existence of conflicting leases, operating agreements, private claims or other future obligations or conditions which may affect all or any portion of the leased Tract, it shall not relieve the Lessee of the obligation to pay any bonus due thereon to the Louisiana State Mineral Board, nor shall the Louisiana State Mineral Board be obligated to refund any consideration

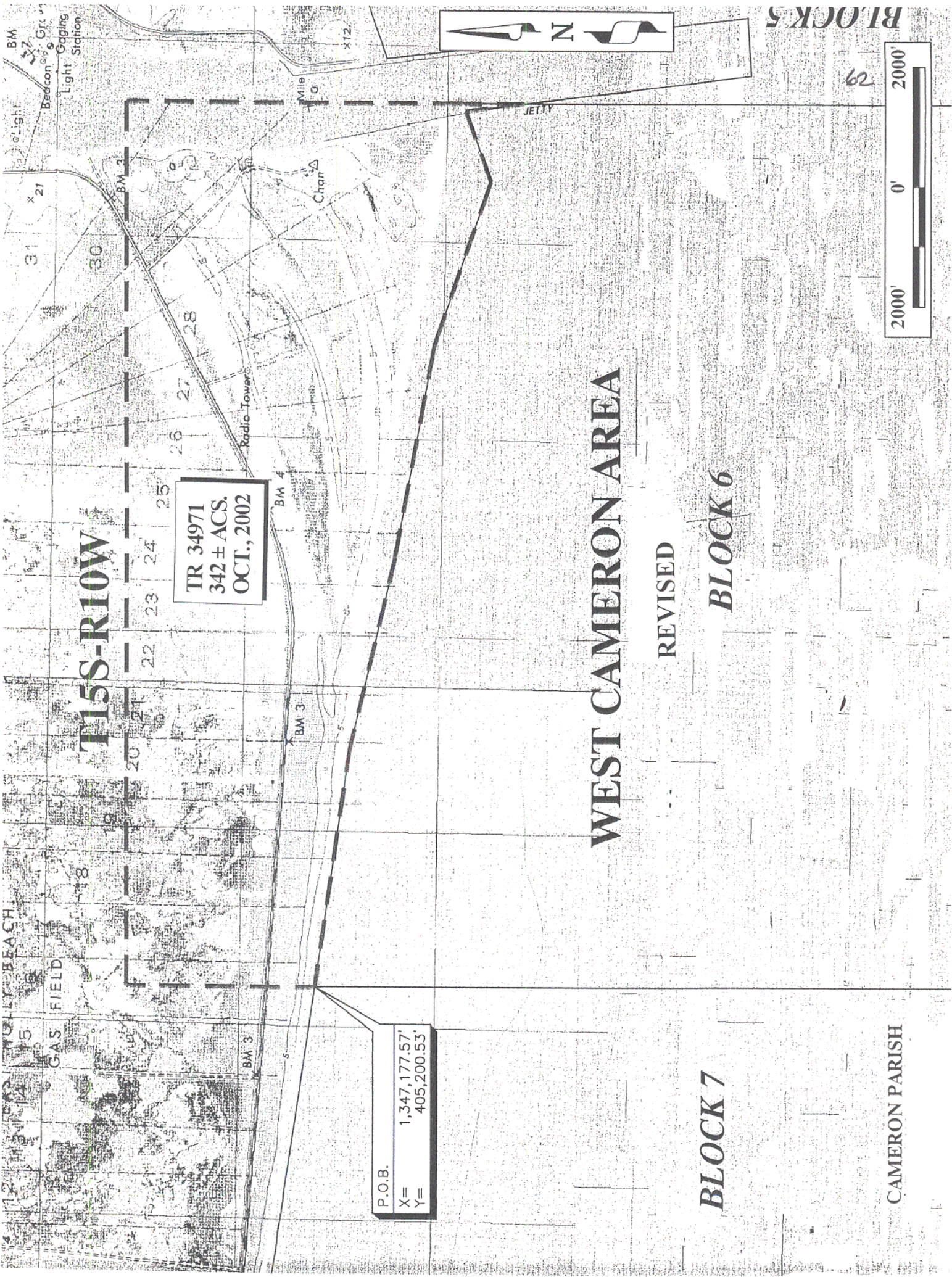
paid by the Lessor prior to such modification, cancellation, or abrogation, including, but not limited to, bonuses, rentals and royalties.

NOTE: It appears, according to our records, that a portion of this Tract is located within the restrictive safety fairway area as set out by the Corps of Engineers, U.S. Army and/or the restrictive anchorage area as set out by the U.S. Coast Guard.

NOTE: The State of Louisiana does hereby reserve, and this lease shall be subject to, the imprescriptible right of surface use in the nature of a servitude in favor of the Department of Natural Resources, including its Offices and Commissions, for the sole purpose of implementing, constructing, servicing and maintaining approved coastal zone management and/or restoration projects. Utilization of any and all rights derived under this lease by the mineral lessee, its agents, successors or assigns, shall not interfere with nor hinder the reasonable surface use by the Department of Natural Resources, its Offices or Commissions, as herein above reserved.

Applicant: Allen & Kirmse, Ltd.

Bidder	Cash Payment	Price / Acre	Rental	Oil	Gas	Other



T15S-R10W

TR 34971
342 ± ACS.
OCT., 2002

P.O.B.
X= 1,347,177.57'
Y= 405,200.53'

WEST CAMERON AREA

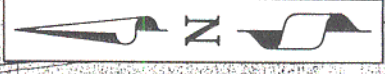
REVISED

BLOCK 6

BLOCK 7

CAMERON PARISH

2000' 0' 2000'



BLOCK 5

TRACT 34972 - Cameron Parish, Louisiana

All of the lands now or formerly constituting the beds and bottoms of all water bodies of every nature and description, and all islands and other lands formed by accretion, where allowed by law, or by reliction, and excepting tax adjudicated lands, belonging to the State of Louisiana and not presently under mineral lease on October 9, 2002, situated in Cameron Parish, Louisiana, and more particularly described as follows: Beginning at the Northeast corner of Block 5, West Cameron Area, said corner also being a point on the coastline as established by the 1975 Court Decree, having Coordinates of X = 1,377,295.42 and Y = 408,078.03; thence Southwesterly in a straight line along said coastline, also being the North line of said Block 5, to a point having Coordinates of X = 1,376,515 and Y = 407,966; thence Southwesterly in a straight line along said coastline, also being the North line of said Block 5, to a point having Coordinates of X = 1,372,945 and Y = 406,862; thence Southwesterly in a straight line along said coastline, also being the North line of said Block 5, to a point having Coordinates of X = 1,370,738 and Y = 406,417; thence Southwesterly in a straight line along said coastline, also being the North line of said Block 5, to a point having Coordinates of X = 1,367,814 and Y = 405,588; thence Southwesterly in a straight line along said coastline, also being the North line of said Block 5, to a point having Coordinates of X = 1,366,193 and Y = 405,206; thence Southwesterly in a straight line along said coastline, also being the North line of said Block 5, to a point having Coordinates of X = 1,362,688 and Y = 403,999; thence Southeasterly in a straight line along said coastline to a point having Coordinates of X = 1,363,392 and Y = 397,870; thence Southwesterly in a straight line along said coastline to a point having Coordinates of X = 1,362,416 and Y = 397,822; thence Northwesterly in a straight line along said coastline to a point on the West line of said Block 5 having Coordinates of X = 1,361,935.62 and Y = 401,659.51; thence North 1,186.46 feet to the Northwest corner of said Block 5 having Coordinates X = 1,361,935.62 and Y = 402,845.97; thence North 5,510.03 feet to a point having Coordinates of X = 1,361,935.62 and Y = 408,356.00; thence East 9,364.38 feet to a point having Coordinates of X = 1,371,300.00 and Y = 408,356.00; thence North 80 degrees 56 minutes 34 seconds East 6,071.11 feet to a point having Coordinates of X = 1,377,295.42 and Y = 409,311.71; thence South 1,233.68 feet to the point of beginning, containing approximately **209 acres**, all as more particularly outlined on a plat on file in the Office of Mineral Resources, Department of Natural Resources, as provided by the applicant. All bearings, distances and coordinates are based on Louisiana Coordinate System of 1927, (North or South Zone), where applicable.

NOTE: The above description of the Tract nominated for lease has been provided and corrected, where required, exclusively by the nomination party. Any mineral lease selected from this Tract and awarded by the Louisiana State Mineral Board shall be without warranty of any kind, either express, implied, or statutory, including, but not limited to, the implied warranties of merchantability and fitness for a particular purpose. Should the mineral lease awarded by the Louisiana State Mineral

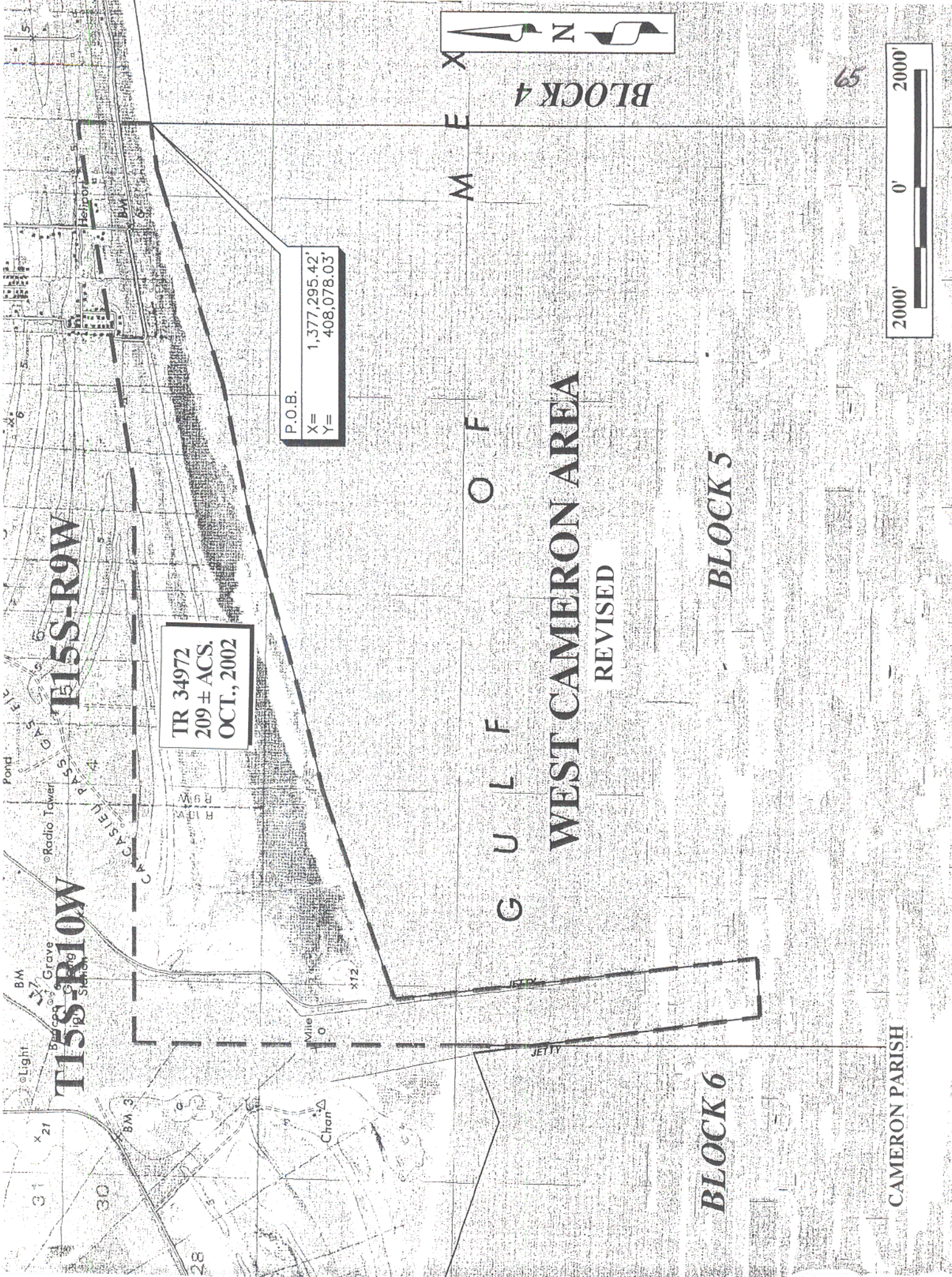
Board be subsequently modified, cancelled or abrogated due to the existence of conflicting leases, operating agreements, private claims or other future obligations or conditions which may affect all or any portion of the leased Tract, it shall not relieve the Lessee of the obligation to pay any bonus due thereon to the Louisiana State Mineral Board, not shall the Louisiana State Mineral Board be obligated to refund any consideration paid by the Lessor prior to such modification, cancellation, or abrogation, including, but not limited to, bonuses, rentals and royalties.

NOTE: It appears, according to our records, that a portion of this Tract is located within the restrictive safety fairway area as set out by the Corps of Engineers, U.S. Army and/or the restrictive anchorage area as set out by the U.S. Coast Guard.

NOTE: The State of Louisiana does hereby reserve, and this lease shall be subject to, the imprescriptible right of surface use in the nature of a servitude in favor of the Department of Natural Resources, including its Offices and Commissions, for the sole purpose of implementing, constructing, servicing and maintaining approved coastal zone management and/or restoration projects. Utilization of any and all rights derived under this lease by the mineral lessee, its agents, successors or assigns, shall not interfere with nor hinder the reasonable surface use by the Department of Natural Resources, its Offices or Commissions, as herein above reserved.

Applicant: Allen & Kirmse, Ltd.

Bidder	Cash Payment	Price / Acre	Rental	Oil	Gas	Other



T15S-R9W

T15S-R10W

TR 34972
209 ± ACS.
OCT., 2002

P.O.B.
X= 1,377,295.42'
Y= 408,078.03'



BLOCK 4

G U L F

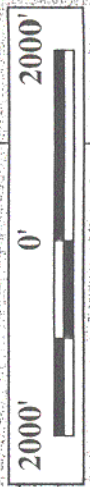
WEST CAMERON AREA

REVISED

BLOCK 6

BLOCK 5

CAMERON PARISH



TRACT 34973 - Terrebonne Parish, Louisiana

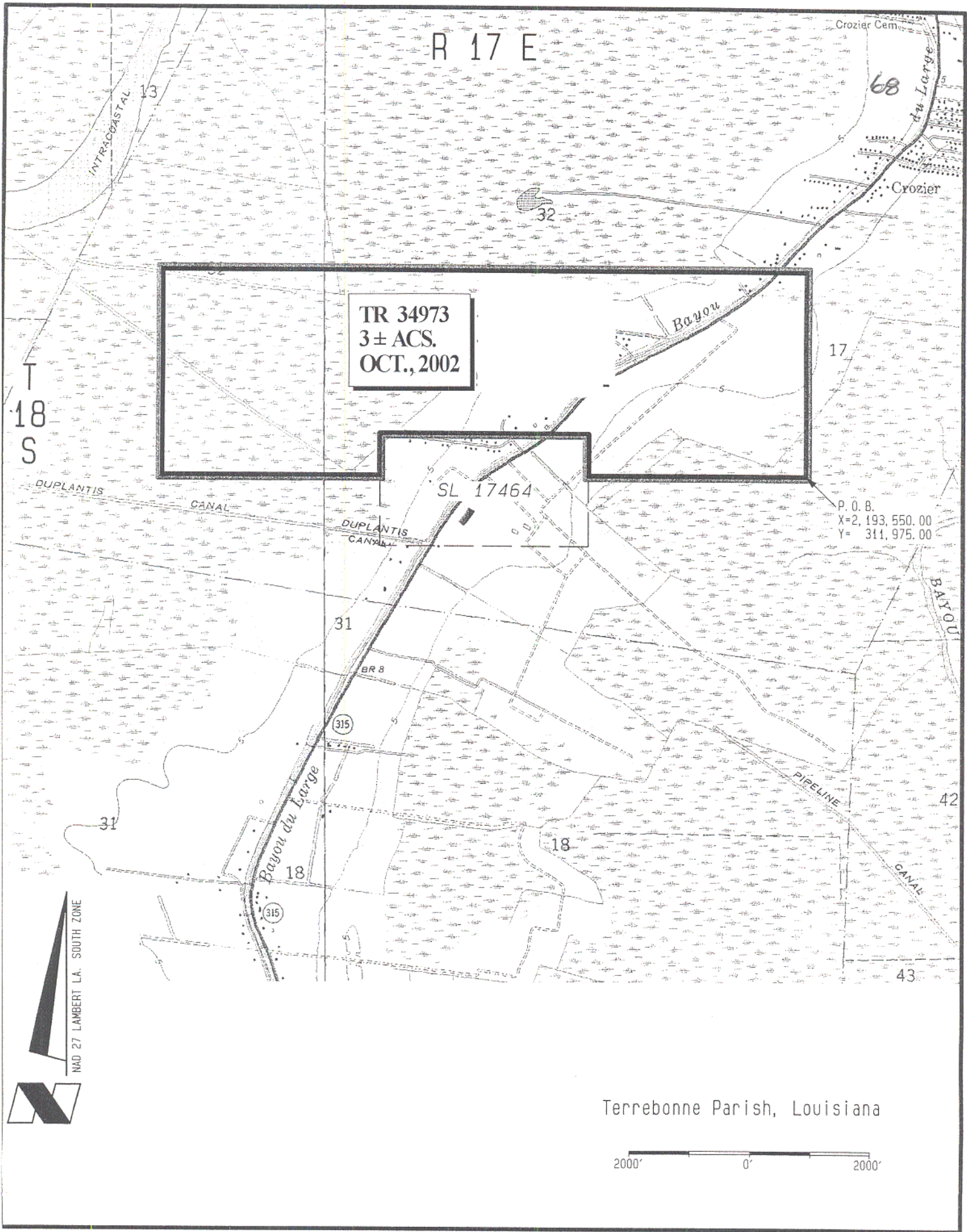
All of the lands now or formerly constituting the beds and bottoms of all water bodies of every nature and description, and all islands and other lands formed by accretion, where allowed by law, or by reliction, and excepting tax adjudicated lands, belonging to the State of Louisiana and not presently under mineral lease on October 9, 2002, situated in Terrebonne Parish, Louisiana, and more particularly described as follows: Beginning at a point having Coordinates of X = 2,193,550.00 and Y = 311,975.00; thence West 3,619.19 feet to a point on the East line of State Lease No. 17464 having Coordinates of X = 2,189,930.81 and Y = 311,975.00; thence along the boundary of said State Lease No. 17464 the following courses: North 701.17 feet, West 3,471.38 feet, and South 701.17 feet to a point on its West line having Coordinates of X = 2,186,459.43 and Y = 311,975.00; thence West 3,629.43 feet to a point having Coordinates of X = 2,182,830.00 and Y = 311,975.00; thence North 3,365.00 feet to a point having Coordinates of X = 2,182,830.00 and Y = 315,340.00; thence East 10,720.00 feet to a point having Coordinates of X = 2,193,550.00 and Y = 315,340.00; thence South 3,365.00 feet to the point of beginning, containing approximately **3 acres**, all as more particularly outlined on a plat on file in the Office of Mineral Resources, Department of Natural Resources, as provided by the applicant. All bearings, distances and coordinates are based on Louisiana Coordinate System of 1927, (North or South Zone), where applicable.

NOTE: The above description of the Tract nominated for lease has been provided and corrected, where required, exclusively by the nomination party. Any mineral lease selected from this Tract and awarded by the Louisiana State Mineral Board shall be without warranty of any kind, either express, implied, or statutory, including, but not limited to, the implied warranties of merchantability and fitness for a particular purpose. Should the mineral lease awarded by the Louisiana State Mineral Board be subsequently modified, cancelled or abrogated due to the existence of conflicting leases, operating agreements, private claims or other future obligations or conditions which may affect all or any portion of the leased Tract, it shall not relieve the Lessee of the obligation to pay any bonus due thereon to the Louisiana State Mineral Board, nor shall the Louisiana State Mineral Board be obligated to refund any consideration paid by the Lessor prior to such modification, cancellation, or abrogation, including, but not limited to, bonuses, rentals and royalties.

NOTE: The State of Louisiana does hereby reserve, and this lease shall be subject to, the imprescriptible right of surface use in the nature of a servitude in favor of the Department of Natural Resources, including its Offices and Commissions, for the sole purpose of implementing, constructing, servicing and maintaining approved coastal zone management and/or restoration projects. Utilization of any and all rights derived under this lease by the mineral lessee, its agents, successors or assigns, shall not interfere with nor hinder the reasonable surface use by the Department of Natural Resources, its Offices or Commissions, as herein above reserved.

Applicant: Stacey Carriere

Bidder	Cash Payment	Price / Acre	Rental	Oil	Gas	Other



R 17 E

TR 34973
3± ACS.
OCT., 2002

SL 17464

P. O. B.
X= 2,193,550.00
Y= 311,975.00

Terrebonne Parish, Louisiana

2000' 0' 2000'

TRACT 34974 - Terrebonne Parish, Louisiana

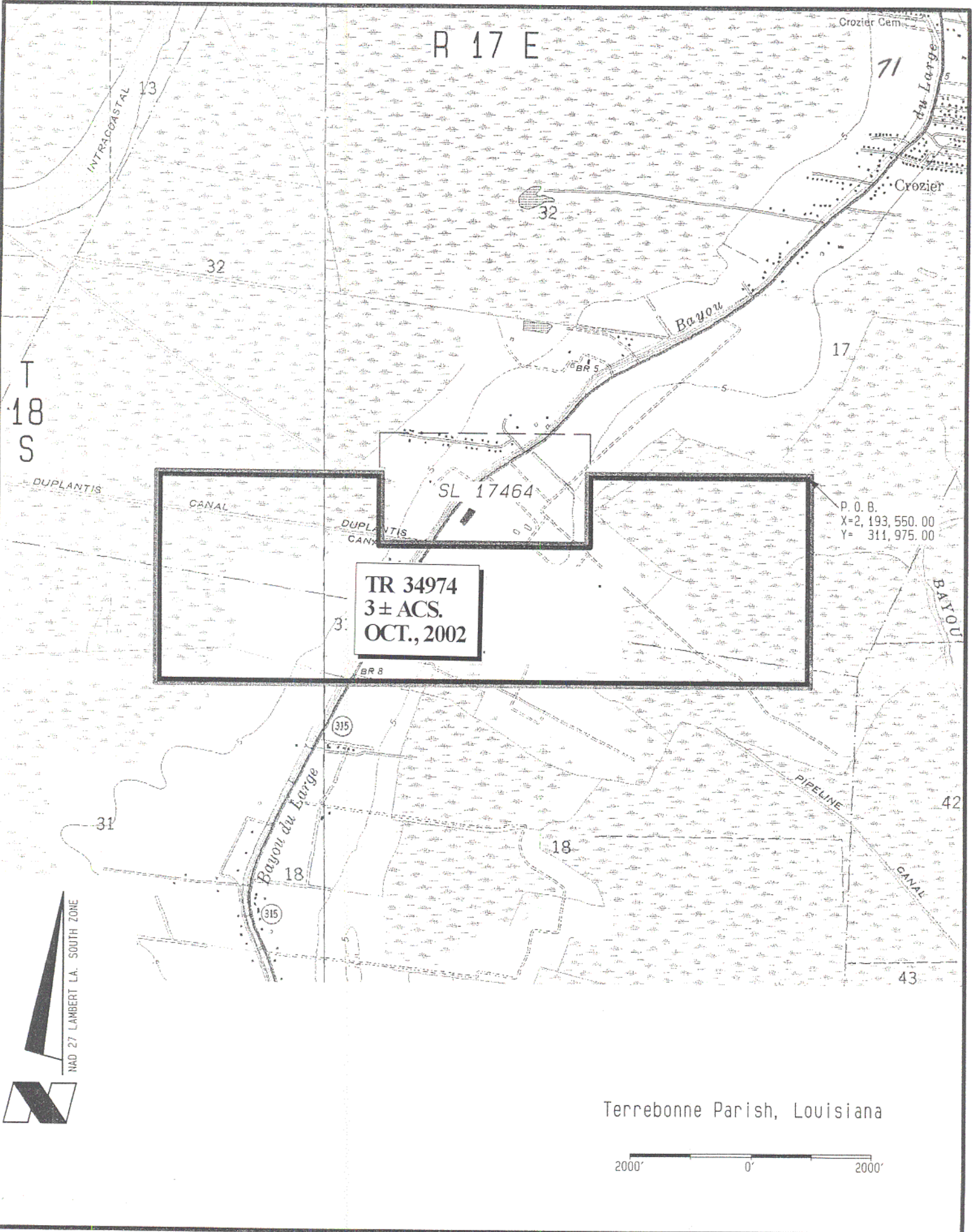
All of the lands now or formerly constituting the beds and bottoms of all water bodies of every nature and description, and all islands and other lands formed by accretion, where allowed by law, or by reliction, and excepting tax adjudicated lands, belonging to the State of Louisiana and not presently under mineral lease on October 9, 2002, situated in Terrebonne Parish, Louisiana, and more particularly described as follows: Beginning at a point having Coordinates of X = 2,193,550.00 and Y = 311,975.00; thence South 3,365.00 feet to a point having Coordinates of X = 2,193,550.00 and Y = 308,610.00; thence West 10,720.00 feet to a point having Coordinates of X = 2,182,830.00 and Y = 308,610.00; thence North 3,365.00 feet to a point having Coordinates of X = 2,182,830.00 and Y = 311,975.00; thence East 3,629.43 feet to a point on the West line of State Lease 17464 having Coordinates of X = 2,186,459.43 and Y = 311,975.00; thence along the boundary of said State Lease No. 17464 the following courses: South 1,140.20 feet, East 3,471.38 feet, and North 1,140.20 feet to a point on its East line having Coordinates of X = 2,189,930.81 and Y = 311,975.00; thence East 3,619.19 feet to the point of beginning, containing approximately **3 acres**, all as more particularly outlined on a plat on file in the Office of Mineral Resources, Department of Natural Resources, as provided by the applicant. All bearings, distances and coordinates are based on Louisiana Coordinate System of 1927, (North or South Zone), where applicable.

NOTE: The above description of the Tract nominated for lease has been provided and corrected, where required, exclusively by the nomination party. Any mineral lease selected from this Tract and awarded by the Louisiana State Mineral Board shall be without warranty of any kind, either express, implied, or statutory, including, but not limited to, the implied warranties of merchantability and fitness for a particular purpose. Should the mineral lease awarded by the Louisiana State Mineral Board be subsequently modified, cancelled or abrogated due to the existence of conflicting leases, operating agreements, private claims or other future obligations or conditions which may affect all or any portion of the leased Tract, it shall not relieve the Lessee of the obligation to pay any bonus due thereon to the Louisiana State Mineral Board, nor shall the Louisiana State Mineral Board be obligated to refund any consideration paid by the Lessor prior to such modification, cancellation, or abrogation, including, but not limited to, bonuses, rentals and royalties.

NOTE: The State of Louisiana does hereby reserve, and this lease shall be subject to, the imprescriptible right of surface use in the nature of a servitude in favor of the Department of Natural Resources, including its Offices and Commissions, for the sole purpose of implementing, constructing, servicing and maintaining approved coastal zone management and/or restoration projects. Utilization of any and all rights derived under this lease by the mineral lessee, its agents, successors or assigns, shall not interfere with nor hinder the reasonable surface use by the Department of Natural Resources, its Offices or Commissions, as herein above reserved.

Applicant: Stacey Carriere

Bidder	Cash Payment	Price / Acre	Rental	Oil	Gas	Other



R 17 E

71

13

32

32

Bayou

17

T
18
S

DUPLANTIS

CANAL

SL 17464

3

TR 34974
3± ACS.
OCT., 2002

BR 8

315

Bayou du Large

31

18

18

PIPELINE

42

43

P. O. B.
X= 2,193,550.00
Y= 311,975.00

NAD 27 LAMBERT LA. SOUTH ZONE



Terrebonne Parish, Louisiana

2000' 0' 2000'

TRACT 34975 - Jefferson and St. Charles Parishes, Louisiana

All of the lands now or formerly constituting the beds and bottoms of all water bodies of every nature and description, and all islands and other lands formed by accretion, where allowed by law, or by reliction, and excepting tax adjudicated lands, belonging to the State of Louisiana and not presently under mineral lease on October 9, 2002, situated in Jefferson and St. Charles Parishes, Louisiana, and more particularly described as follows: Beginning at a point having Coordinates of X = 2,339,811.14 and Y = 432,644.38; thence North 72 degrees 18 minutes 06 seconds East 1,085.44 feet to a point having Coordinates of X = 2,340,845.21 and Y = 432,974.36; thence South 21 degrees 29 minutes 07 seconds East 5,883.17 feet to a point having Coordinates of X = 2,343,000.00 and Y = 427,500.00; thence North 43 degrees 21 minutes 29 seconds East 2,196.47 feet to a point having Coordinates of X = 2,344,508.00 and Y = 429,097.00; thence South 14 degrees 51 minutes 09 seconds East 3,296.13 feet to a point having Coordinates of X = 2,345,352.90 and Y = 425,911.00; thence South 82 degrees 57 minutes 36 seconds East 9,805.02 feet to a point having Coordinates of X = 2,355,084.00 and Y = 424,709.25; thence South 1,633.25 feet to a point having Coordinates of X = 2,355,084.00 and Y = 423,076.00; thence South 4,076.00 feet to a point having Coordinates of X = 2,355,084.00 and Y = 419,000.00; thence East 3,127.14 feet to a point having Coordinates of X = 2,358,211.14 and Y = 419,000.00; thence South 2,405.46 feet to a point having Coordinates of X = 2,358,211.14 and Y = 416,594.54; thence West 18,400.00 feet to a point having Coordinates of X = 2,339,811.14 and Y = 416,594.54; thence North 16,049.84 feet to the point of beginning, **LESS AND EXCEPT**, if any, that portion of Salvador/Timken Wildlife Management Area that may lie within the above described tract, containing approximately **2,214.74 acres**, all as more particularly outlined on a plat on file in the Office of Mineral Resources, Department of Natural Resources, as provided by the applicant. All bearings, distances and coordinates are based on Louisiana Coordinate System of 1927, (North or South Zone), where applicable.

NOTE: The above description of the Tract nominated for lease has been provided and corrected, where required, exclusively by the nomination party. Any mineral lease selected from this Tract and awarded by the Louisiana State Mineral Board shall be without warranty of any kind, either express, implied, or statutory, including, but not limited to, the implied warranties of merchantability and fitness for a particular purpose. Should the mineral lease awarded by the Louisiana State Mineral Board be subsequently modified, cancelled or abrogated due to the existence of conflicting leases, operating agreements, private claims or other future obligations or conditions which may affect all or any portion of the leased Tract, it shall not relieve the Lessee of the obligation to pay any bonus due thereon to the Louisiana State Mineral Board, nor shall the Louisiana State Mineral Board be obligated to refund any consideration paid by the Lessor prior to such modification, cancellation, or abrogation, including, but not limited to, bonuses, rentals and royalties.

NOTE: The State of Louisiana does hereby reserve, and this lease shall be subject to, the imprescriptible right of surface use in the nature of a servitude in favor of the Department of Natural Resources, including its Offices and Commissions, for the sole purpose of implementing, constructing, servicing and maintaining approved coastal zone management and/or restoration projects. Utilization of any and all rights derived under this lease by the mineral lessee, its agents, successors or assigns, shall not interfere with nor hinder the reasonable surface use by the Department of Natural Resources, its Offices or Commissions, as herein above reserved.

Applicant: Jack Ross

Bidder	Cash Payment	Price / Acre	Rental	Oil	Gas	Other



X = 2,340,845.21
Y = 432,974.36

POB
X = 2,339,811.14
Y = 432,644.38

X = 2,343,000.00
Y = 427,500.00

X = 2,344,508.00
Y = 429,097.00

X = 2,345,352.90
Y = 425,911.00

X = 2,355,084.00
Y = 423,076.00

X = 2,355,084.00
Y = 424,709.25

X = 2,355,084.00
Y = 419,000.00

X = 2,358,211.14
Y = 419,000.00

X = 2,358,211.14
Y = 416,594.54

X = 2,339,811.14
Y = 416,594.54

TR 34975
2,214.74 ± ACS.
OCT., 2002

St. Charles Parish
Scale: 1"=3000'

S.L. 17373
S.L. 17372
S.L. 17371
C A T A O U A H E

S.L. 16997

74

TRACT 34976 - Lafourche Parish, Louisiana

All of the lands now or formerly constituting the beds and bottoms of all water bodies of every nature and description, and all islands and other lands formed by accretion, where allowed by law, or by reliction, and excepting tax adjudicated lands, belonging to the State of Louisiana and not presently under mineral lease on October 9, 2002, situated in Lafourche Parish, Louisiana, and more particularly described as follows: Beginning at a point having Coordinates of X = 2,368,900.00 and Y = 311,500.00; thence South 13,152.99 feet to a point on the North line of State Lease No. 17260 having Coordinates of X = 2,368,900.00 and Y = 298,347.01; thence South 88 degrees 21 minutes 15 seconds West 5,130.15 feet along the North line of said State Lease No. 17260 to its Northwest corner having Coordinates of X = 2,363,771.97 and Y = 298,199.65; thence South 88 degrees 21 minutes 15 seconds West 3,973.61 feet to a point having Coordinates of X = 2,359,800.00 and Y = 298,085.51; thence North 13,414.49 feet to a point having Coordinates of X = 2,359,800.00 and Y = 311,500.00; thence East 9,100.00 feet to the point of beginning, containing approximately **2,480 acres**, all as more particularly outlined on a plat on file in the Office of Mineral Resources, Department of Natural Resources, as provided by the applicant. All bearings, distances and coordinates are based on Louisiana Coordinate System of 1927, (North or South Zone), where applicable.

NOTE: The above description of the Tract nominated for lease has been provided and corrected, where required, exclusively by the nomination party. Any mineral lease selected from this Tract and awarded by the Louisiana State Mineral Board shall be without warranty of any kind, either express, implied, or statutory, including, but not limited to, the implied warranties of merchantability and fitness for a particular purpose. Should the mineral lease awarded by the Louisiana State Mineral Board be subsequently modified, cancelled or abrogated due to the existence of conflicting leases, operating agreements, private claims or other future obligations or conditions which may affect all or any portion of the leased Tract, it shall not relieve the Lessee of the obligation to pay any bonus due thereon to the Louisiana State Mineral Board, nor shall the Louisiana State Mineral Board be obligated to refund any consideration paid by the Lessor prior to such modification, cancellation, or abrogation, including, but not limited to, bonuses, rentals and royalties.

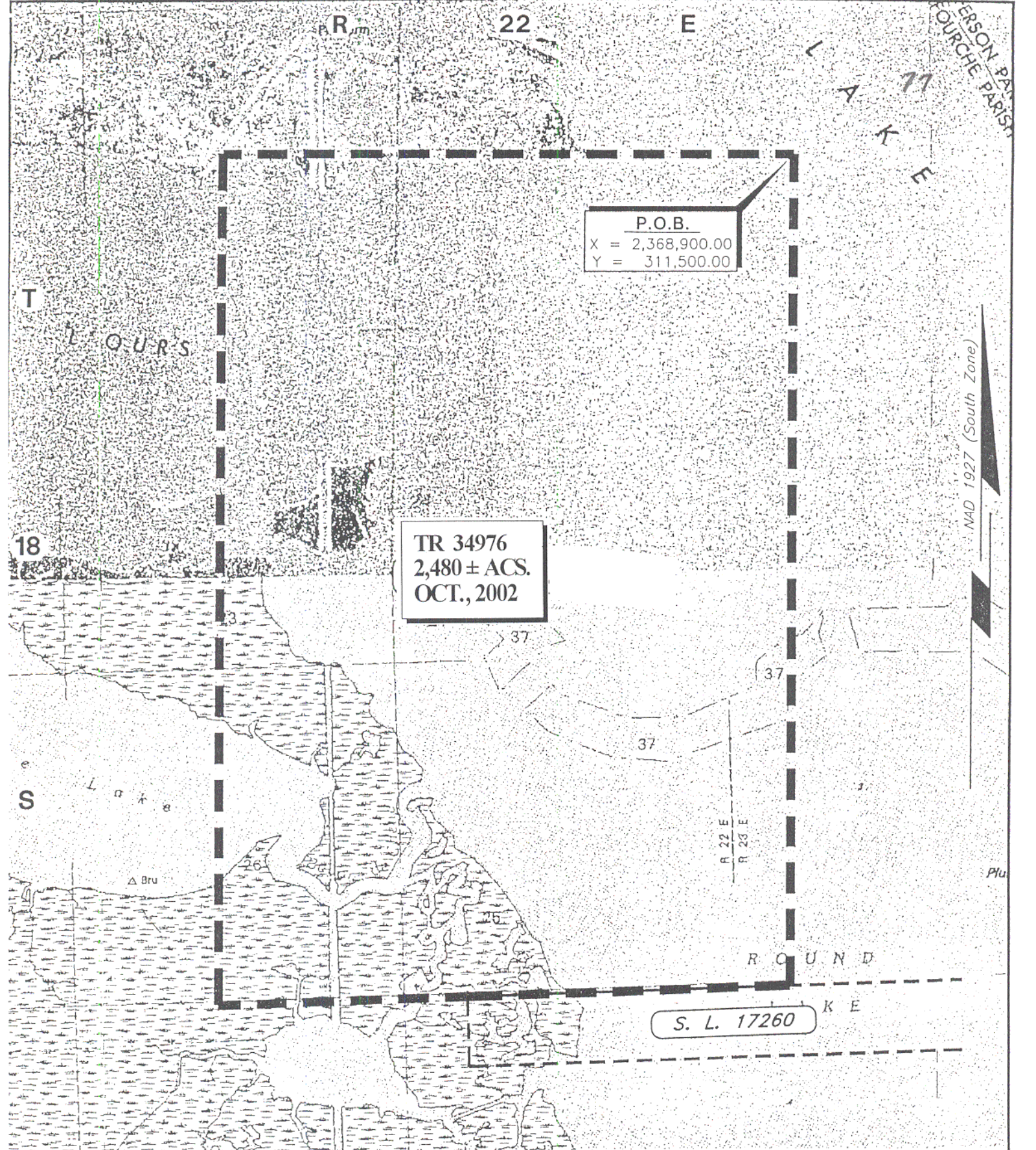
NOTE: The Department of Wildlife and Fisheries has designated certain areas in the coastal waters of the State of Louisiana as Oyster Seed Bed Areas. The exact location of those Seed Bed Areas must be obtained from the Department of Wildlife and Fisheries and any work done under a mineral lease from the State of Louisiana may necessarily be conducted in conformity with the rules and regulations promulgated by the said Department of Wildlife and Fisheries for Oyster Seed Bed Areas.

NOTE: The State of Louisiana does hereby reserve, and this lease shall be subject to, the imprescriptible right of surface use in the nature of a servitude in favor of the Department of Natural Resources, including its

Offices and Commissions, for the sole purpose of implementing, constructing, servicing and maintaining approved coastal zone management and/or restoration projects. Utilization of any and all rights derived under this lease by the mineral lessee, its agents, successors or assigns, shall not interfere with nor hinder the reasonable surface use by the Department of Natural Resources, its Offices or Commissions, as herein above reserved.

Applicant: M.J. Garvey & Associates

Bidder	Cash Payment	Price / Acre	Rental	Oil	Gas	Other



LAFOURCHE PARISH, LOUISIANA

SCALE : 1" = 2000'

TRACT 34977 - Plaquemines Parish, Louisiana

All of the lands now or formerly constituting the beds and bottoms of all water bodies of every nature and description, and all islands and other lands formed by accretion, where allowed by law, or by reliction, and excepting tax adjudicated lands, belonging to the State of Louisiana and not presently under mineral lease on October 9, 2002, situated in Plaquemines Parish, Louisiana, and more particularly described as follows: Beginning at a point having Coordinates of X = 2,576,474.05 and Y = 240,066.72; thence North 88 degrees 20 minutes 03 seconds East 3,009.46 feet to a point on the Western boundary of State Lease No. 3279, as amended having Coordinates of X = 2,579,482.24 and Y = 240,154.21; thence along the boundary of said State Lease No. 3279 the following courses: South 80 degrees 43 minutes 42 seconds West 615.58 feet, South 79 degrees 56 minutes 02 seconds West 514.93 feet, South 69 degrees 11 minutes 30 seconds West 717.82 feet, South 69 degrees 45 minutes 46 seconds West 231.28 feet, South 38 degrees 26 minutes 29 seconds East 879.40 feet, South 85 degrees 05 minutes 23 seconds West 14.47 feet, South 71 degrees 02 minutes 31 seconds West 277.03 feet, South 67 degrees 42 minutes 52 seconds West 329.62 feet, South 38 degrees 16 minutes 08 seconds East 787.70 feet, South 75 degrees 20 minutes 54 seconds West 302.72 feet, South 47 degrees 14 minutes 45 seconds East 360.90 feet, South 41 degrees 55 minutes 21 seconds East 329.28 feet, South 42 degrees 03 minutes 54 seconds East 576.86 feet, South 39 degrees 43 minutes 38 seconds East 2,608.81 feet, South 38 degrees 37 minutes 53 seconds East 186.03 feet, North 53 degrees 50 minutes 01 seconds East 717.48 feet, and North 53 degrees 47 minutes 16 seconds East 2,182.98 feet to a point having Coordinates of X = 2,582,635.52 and Y = 236,673.06; thence South 1,712.47 feet to a point having Coordinates of X = 2,582,635.52 and Y = 234,960.59; thence South 88 degrees 18 minutes 57 seconds West 6,008.88 feet to a point having Coordinates of X = 2,576,629.24 and Y = 234,784.00; thence North 01 degrees 40 minutes 58 seconds West 5,285.00 feet to the point of beginning, **LESS AND EXCEPT**, if any, those portions of State Lease No. 3155, as amended, State Lease No. 3262, as amended, and State Lease No. 3279, as amended, that may lie within the above described tract, containing approximately **20 acres**, all as more particularly outlined on a plat on file in the Office of Mineral Resources, Department of Natural Resources, as provided by the applicant. All bearings, distances and coordinates are based on Louisiana Coordinate System of 1927, (North or South Zone), where applicable.

NOTE: The above description of the Tract nominated for lease has been provided and corrected, where required, exclusively by the nomination party. Any mineral lease selected from this Tract and awarded by the Louisiana State Mineral Board shall be without warranty of any kind, either express, implied, or statutory, including, but not limited to, the implied warranties of merchantability and fitness for a particular purpose. Should the mineral lease awarded by the Louisiana State Mineral Board be subsequently modified, cancelled or abrogated due to the existence of conflicting leases, operating agreements, private claims or other future obligations or conditions which may affect all or any portion

of the leased Tract, it shall not relieve the Lessee of the obligation to pay any bonus due thereon to the Louisiana State Mineral Board, not shall the Louisiana State Mineral Board be obligated to refund any consideration paid by the Lessor prior to such modification, cancellation, or abrogation, including, but not limited to, bonuses, rentals and royalties.

NOTE: The Department of Wildlife and Fisheries has designated certain areas in the coastal waters of the State of Louisiana as Oyster Seed Bed Areas. The exact location of those Seed Bed Areas must be obtained from the Department of Wildlife and Fisheries and any work done under a mineral lease from the State of Louisiana may necessarily be conducted in conformity with the rules and regulations promulgated by the said Department of Wildlife and Fisheries for Oyster Seed Bed Areas.

NOTE: The State of Louisiana does hereby reserve, and this lease shall be subject to, the imprescriptible right of surface use in the nature of a servitude in favor of the Department of Natural Resources, including its Offices and Commissions, for the sole purpose of implementing, constructing, servicing and maintaining approved coastal zone management and/or restoration projects. Utilization of any and all rights derived under this lease by the mineral lessee, its agents, successors or assigns, shall not interfere with nor hinder the reasonable surface use by the Department of Natural Resources, its Offices or Commissions, as herein above reserved.

Applicant: Magellan Energy, L.L.C.

Bidder	Cash Payment	Price / Acre	Rental	Oil	Gas	Other

