

Any mineral lease of the nominated tract by the Louisiana State Mineral Board shall be without warranty of any kind, either express, implied, or statutory, including, but not limited to, the implied warranties or merchantability and fitness for a particular purpose. Should the mineral lease of the nominated tract awarded by the Louisiana State Mineral Board be subsequently modified, cancelled or abrogated due to the existence of conflicting leases, operating agreements, private claims or other existing or future obligations or conditions which may affect all or any portion of the leased tract, it shall not relieve the Lessee of the obligation to pay any bonus due thereon to the Louisiana State Mineral Board, nor shall the Louisiana State Mineral Board be obligated to refund any consideration paid by the Lessee prior to such modification, cancellation, or abrogation, including, but not limited to, bonuses, rents and royalties.

NOTE: The State of Louisiana does hereby reserve, and this lease shall be subject to, the imprescriptible right of surface use in the nature of a servitude in favor of the Department of Natural Resources, including its Offices and Commissions, for the sole purpose of implementing, constructing, servicing and maintaining approved coastal zone management and/or restoration projects. Utilization of any and all rights derived under this lease by the mineral lessee, its agents, successors or assigns, shall not interfere with nor hinder the reasonable surface use by the Department of Natural Resources, its Offices or Commissions, as hereinabove reserved.

Applicant: Harold J. Anderson, Inc.

Bidder	Cash Payment	Price / Acre	Rental	Oil	Gas	Other



**TRACT 33863 - Plaquemines Parish, Louisiana**

All of the lands now or formerly constituting the beds and bottoms of all water bodies of every nature and description and all islands and other lands formed by accretion or reliction, except tax lands, owned by and not under mineral lease from the State of Louisiana on October 10, 2001, situated in Plaquemines Parish, Louisiana, within the following described boundaries: Beginning at the Southeast corner of Tract 3 of State Lease No. 1464, as amended, having Coordinates of X = 2,502,705.93 and Y = 254,976.98; thence South 7,476.98 feet to a point having Coordinates of X = 2,502,705.93 and Y = 247,500.00; thence West 11,805.93 feet to a point having Coordinates of X = 2,490,900.00 and Y = 247,500.00; thence North approximately 9,347 feet to a point on the Southeastern boundary of State Lease No. 212, as amended; thence Northeasterly on the boundary of said State Lease No. 212 to a point of intersection with an East-West line having a Coordinate of Y = 257,700.00; thence East approximately 6,375 feet to a point on the West line of said State Lease No. 1464 having Coordinates of X = 2,498,142.48 and Y = 257,700.00; thence along said State Lease No. 1464 the following courses: South 01 degrees 50 minutes 50 seconds West 2,578.58 feet and South 88 degrees 12 minutes 11 seconds East 4,648.86 feet to the point of beginning, containing approximately **660 acres**, as shown outlined on a plat on file in the Office of Mineral Resources, Department of Natural Resources, as provided by the applicant. All bearings, distances and coordinates are based on Louisiana Coordinate System of 1927 (South Zone).

NOTE: The above description of the tract nominated for lease has been provided exclusively by the party nominating the tract for lease. The Louisiana State Mineral Board makes no representation as to the accuracy of the description of the nominated tract or its suitability for lease. The Louisiana State Mineral Board has made no inspection of the nominated tract for the existence of conflicting leases, operating agreements, private claims or other existing or future obligations or conditions which may affect all or any portion of the nominated tract or its suitability for lease.

Maps depicting the nominated tract, containing the bearings, distances and coordinates of the nominated tract based on the Louisiana Coordinate System of 1927, North or South Zone, as applicable, are available for public inspection and review at the offices of the Louisiana State Mineral Board from 10:00 a.m. to 3:00 p.m. Monday - Friday.

In the event of conflict between the description of the nominated tract set forth above and the description of the nominated property as contained on the maps maintained at the offices of the Louisiana State Mineral Board, the Louisiana State Mineral Board maps shall prevail and shall provide the final property description of the lease to be awarded of the nominated tract.

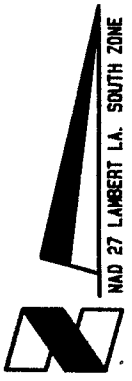
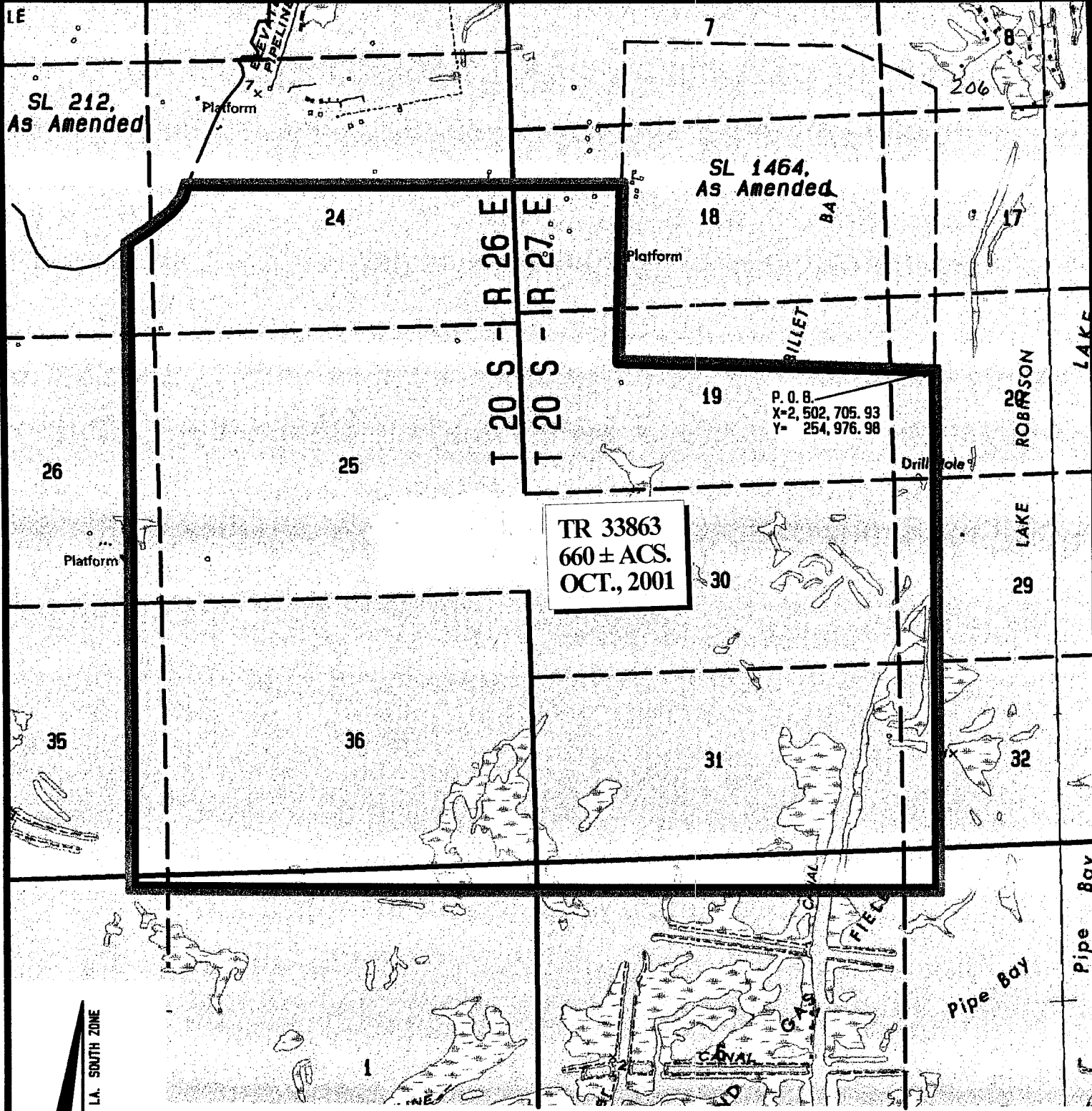
Any mineral lease of the nominated tract by the Louisiana State Mineral Board shall be without warranty of any kind, either express, implied, or statutory, including, but not limited to, the implied warranties or merchantability and fitness for a particular purpose. Should the mineral lease of the nominated tract awarded by the Louisiana State Mineral Board be subsequently modified, cancelled or abrogated due to the existence of conflicting leases, operating agreements, private claims or other existing of future obligations

or conditions which may affect all or any portion of the leased tract, it shall not relieve the Lessee of the obligation to pay any bonus due thereon to the Louisiana State Mineral Board, nor shall the Louisiana State Mineral Board be obligated to refund any consideration paid by the Lessee prior to such modification, cancellation, or abrogation, including, but not limited to, bonuses, rents and royalties.

NOTE: The State of Louisiana does hereby reserve, and this lease shall be subject to, the imprescriptible right of surface use in the nature of a servitude in favor of the Department of Natural Resources, including its Offices and Commissions, for the sole purpose of implementing, constructing, servicing and maintaining approved coastal zone management and/or restoration projects. Utilization of any and all rights derived under this lease by the mineral lessee, its agents, successors or assigns, shall not interfere with nor hinder the reasonable surface use by the Department of Natural Resources, its Offices or Commissions, as hereinabove reserved.

Applicant: Harold J. Anderson, Inc.

Bidder	Cash Payment	Price / Acre	Rental	Oil	Gas	Other



**PLAT ACCOMPANYING APPLICATION  
FOR STATE LEASE**  
Plaquemines Parish, Louisiana

2000' 0' 2000'

**TRACT 33864 - Plaquemines Parish, Louisiana**

All of the lands now or formerly constituting the beds and bottoms of all water bodies of every nature and description and all islands and other lands formed by accretion or reliction, except tax lands, owned by and not under mineral lease from the State of Louisiana on October 10, 2001, situated in Plaquemines Parish, Louisiana, within the following described boundaries: Beginning at the Southeast corner of Tract 3 of State Lease No. 1464, as amended, having Coordinates of X = 2,502,705.93 and Y = 254,976.98; thence North 01 degrees 07 minutes 00 seconds East 2,723.54 feet on the East line of said State Lease No. 1464 to a point having Coordinates of X = 2,502,759.01 and Y = 257,700.00; thence East 10,240.99 feet to a point having Coordinates of X = 2,513,000.00 and Y = 257,700.00; thence South 6,585.37 feet to a point on the North line of State Lease No. 16402 having Coordinates of X = 2,513,000.00 and Y = 251,114.63; thence along the boundary of said State Lease No. 16402 the following courses: South 88 degrees 03 minutes 57 seconds West 5,437.38 feet, South 00 degrees 58 minutes 53 seconds East 2,668.54 feet and South 00 degrees 02 minutes 12 seconds East 762.97 feet to a point having Coordinates of X = 2,507,611.91 and Y = 247,500.00; thence West 4,905.98 feet to a point having Coordinates of X = 2,502,705.93 and Y = 247,500.00; thence North 7,476.98 feet to the point of beginning, containing approximately **853 acres**, as shown outlined on a plat on file in the Office of Mineral Resources, Department of Natural Resources, as provided by the applicant. All bearings, distances and coordinates are based on Louisiana Coordinate System of 1927 (South Zone).

NOTE: The above description of the tract nominated for lease has been provided exclusively by the party nominating the tract for lease. The Louisiana State Mineral Board makes no representation as to the accuracy of the description of the nominated tract or its suitability for lease. The Louisiana State Mineral Board has made no inspection of the nominated tract for the existence of conflicting leases, operating agreements, private claims or other existing or future obligations or conditions which may affect all or any portion of the nominated tract or its suitability for lease.

Maps depicting the nominated tract, containing the bearings, distances and coordinates of the nominated tract based on the Louisiana Coordinate System of 1927, North or South Zone, as applicable, are available for public inspection and review at the offices of the Louisiana State Mineral Board from 10:00 a.m. to 3:00 p.m. Monday - Friday.

In the event of conflict between the description of the nominated tract set forth above and the description of the nominated property as contained on the maps maintained at the offices of the Louisiana State Mineral Board, the Louisiana State Mineral Board maps shall prevail and shall provide the final property description of the lease to be awarded of the nominated tract.

Any mineral lease of the nominated tract by the Louisiana State Mineral Board shall be without warranty of any kind, either express, implied, or statutory, including, but not limited to, the implied warranties or merchantability and fitness for a particular purpose. Should the mineral lease of the nominated tract awarded by the Louisiana State Mineral Board be subsequently modified, cancelled or abrogated due to the existence of conflicting leases, operating

agreements, private claims or other existing of future obligations or conditions which may affect all or any portion of the leased tract, it shall not relieve the Lessee of the obligation to pay any bonus due thereon to the Louisiana State Mineral Board, nor shall the Louisiana State Mineral Board be obligated to refund any consideration paid by the Lessee prior to such modification, cancellation, or abrogation, including, but not limited to, bonuses, rents and royalties.

NOTE: The State of Louisiana does hereby reserve, and this lease shall be subject to, the imprescriptible right of surface use in the nature of a servitude in favor of the Department of Natural Resources, including its Offices and Commissions, for the sole purpose of implementing, constructing, servicing and maintaining approved coastal zone management and/or restoration projects. Utilization of any and all rights derived under this lease by the mineral lessee, its agents, successors or assigns, shall not interfere with nor hinder the reasonable surface use by the Department of Natural Resources, its Offices or Commissions, as hereinabove reserved.

Applicant: Harold J. Anderson, Inc.

Bidder	Cash Payment	Price / Acre	Rental	Oil	Gas	Other

SL 1464,  
As Amended

18 BAY

BILLET

19

P. P. B.  
X = 2,502,705.93  
Y = 254,976.98

Drill Hole

LAKE

ROBINSON  
LAKE

29

32

TR 33864  
853 ± ACS.  
OCT., 2001

Δ Lake

GARDEN

T 20 S - R 27 E

T 21 S - R 27 E

BAY

Pipe Bay

Pipe

5



PLAT ACCOMPANYING APPLICATION  
FOR STATE LEASE  
Plaquemines Parish, Louisiana

2000' 0' 2000'

SL 16402

**TRACT 33865 - Plaquemines Parish, Louisiana**

All of the lands now or formerly constituting the beds and bottoms of all water bodies of every nature and description and all islands and other lands formed by accretion or reliction, except tax lands, owned by and not under mineral lease from the State of Louisiana on October 10, 2001, situated in Plaquemines Parish, Louisiana, within the following described boundaries: Beginning at a point having Coordinates of X = 2,555,400.00 and Y = 258,500.00; thence East 9,507.28 feet to a point having Coordinates of X = 2,564,907.28 and Y = 258,500.00; thence North 25 degrees 00 minutes 00 seconds East 3,641.15 feet to a point having Coordinates of X = 2,566,446.09 and Y = 261,800.00; thence South 72 degrees 10 minutes 38 seconds East 7,514.55 feet to a point having Coordinates of X = 2,573,600.00 and Y = 259,500.00; thence South 3,550.00 feet to a point having Coordinates of X = 2,573,600.00 and Y = 255,950.00; thence West 4,200.00 feet to a point having Coordinates of X = 2,569,400.00 and Y = 255,950.00; thence South 5,850.00 feet to a point having Coordinates of X = 2,569,400.00 and Y = 250,100.00; thence West 14,000.00 feet to a point having Coordinates of X = 2,555,400.00 and Y = 250,100.00; thence North 8,400.00 feet to the point of beginning, containing approximately 1,399 acres, as shown outlined on a plat on file in the Office of Mineral Resources, Department of Natural Resources, as provided by the applicant. All bearings, distances and coordinates are based on Louisiana Coordinate System of 1927 (South Zone).

NOTE: The above description of the tract nominated for lease has been provided exclusively by the party nominating the tract for lease. The Louisiana State Mineral Board makes no representation as to the accuracy of the description of the nominated tract or its suitability for lease. The Louisiana State Mineral Board has made no inspection of the nominated tract for the existence of conflicting leases, operating agreements, private claims or other existing or future obligations or conditions which may affect all or any portion of the nominated tract or its suitability for lease.

Maps depicting the nominated tract, containing the bearings, distances and coordinates of the nominated tract based on the Louisiana Coordinate System of 1927, North or South Zone, as applicable, are available for public inspection and review at the offices of the Louisiana State Mineral Board from 10:00 a.m. to 3:00 p.m. Monday - Friday.

In the event of conflict between the description of the nominated tract set forth above and the description of the nominated property as contained on the maps maintained at the offices of the Louisiana State Mineral Board, the Louisiana State Mineral Board maps shall prevail and shall provide the final property description of the lease to be awarded of the nominated tract.

Any mineral lease of the nominated tract by the Louisiana State Mineral Board shall be without warranty of any kind, either express, implied, or statutory, including, but not limited to, the implied warranties or merchantability and fitness for a particular purpose. Should the mineral lease of the nominated tract awarded by the Louisiana State Mineral Board be subsequently modified, cancelled or abrogated due to the existence of conflicting leases, operating agreements, private claims or other existing of future obligations or conditions which may affect all or any portion of the leased