

P.O.B.
X=2,173,681.81
Y= 185,900.00

TR 32826

T-22-S R-16-E

T-22-S R-17-E

NOT TO BE USED WITH A PORTION OF THE TERREBONNE PARISH
FOR INFORMATIONAL PURPOSES

WHITE BAY
MAP NOT TO SCALE

B & A Map Services
Division of PI

TRACT 32826 - Terrebonne Parish, Louisiana

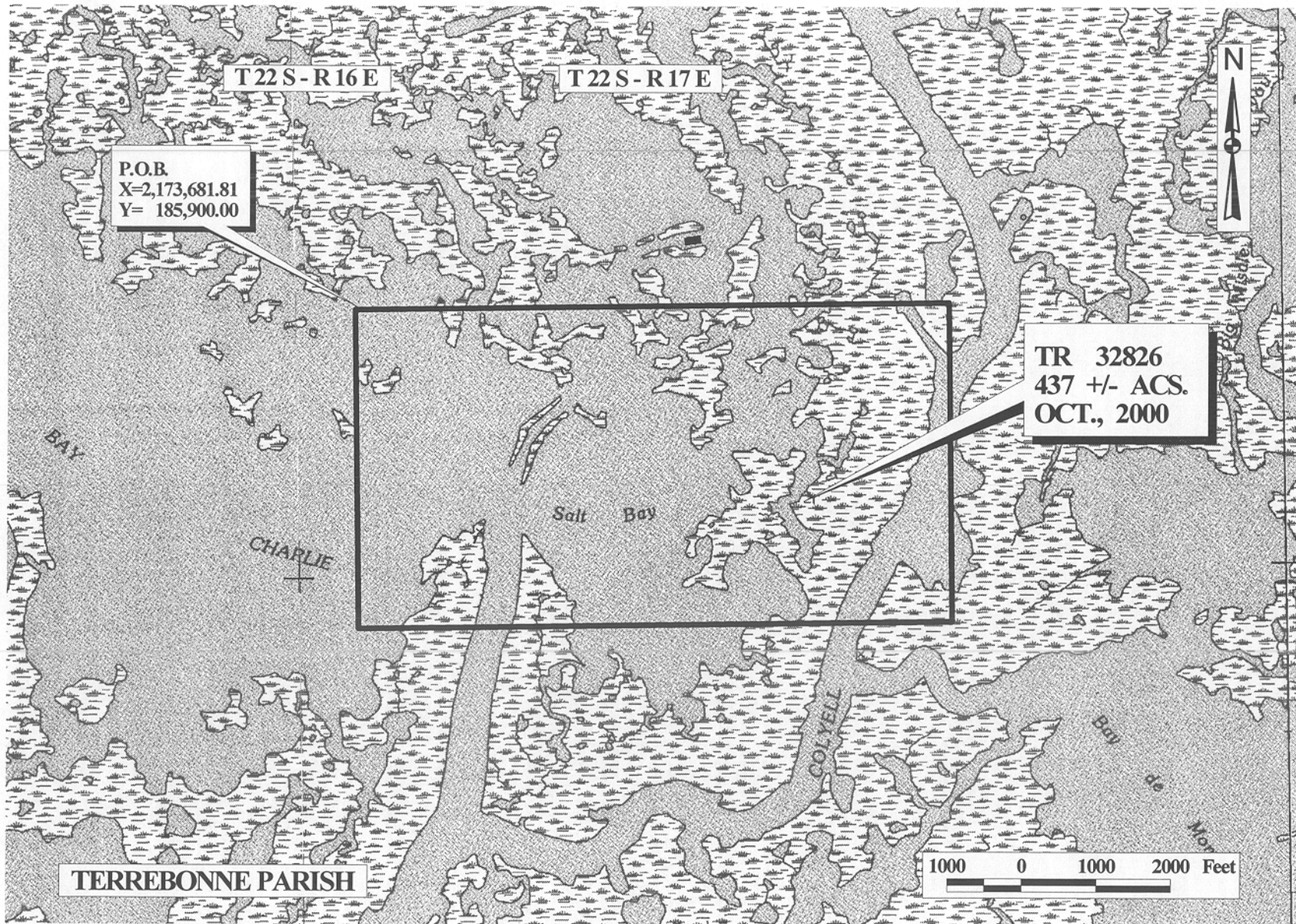
All of the lands now or formerly constituting the beds and bottoms of all water bodies of every nature and description and all islands and other lands formed by accretion or reliction, except tax lands, owned by and not under mineral lease from the State of Louisiana on October 11, 2000, situated in Terrebonne Parish, Louisiana, within the following described boundaries: Beginning at a point having Coordinates of X = 2,173,681.81 and Y = 185,900.00; thence East 8,000.00 feet to a point having Coordinates of X = 2,181,681.81 and Y = 185,900.00; thence South 4,356.00 feet to a point having Coordinates of X = 2,181,681.81 and Y = 181,544.00; thence West 8,000.00 feet to a point having Coordinates of X = 2,173,681.81 and Y = 181,544.00; thence North 4,356.00 feet to the point of beginning, containing approximately **437 acres**, as shown outlined in red on a plat on file in the Office of Mineral Resources, Department of Natural Resources. All bearings, distances and coordinates are based on Louisiana Coordinate System of 1927 (South Zone).

NOTE: The above tract is located in or near an oyster restricted area and all operations in such area must be conducted in strict conformity with the stipulations and/or regulations of the Louisiana Department of Wildlife and Fisheries.

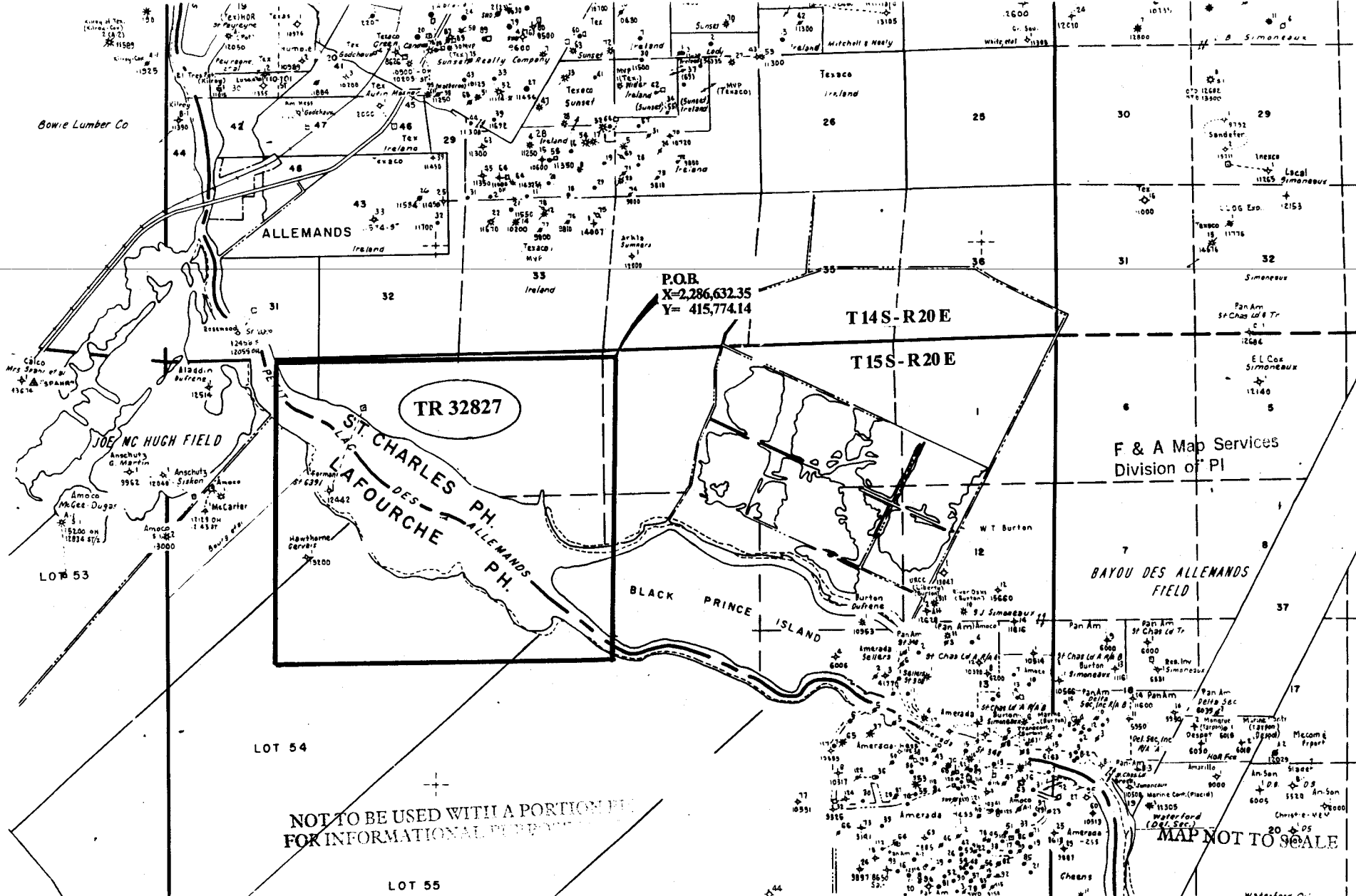
NOTE: The State of Louisiana does hereby reserve, and this lease shall be subject to, the imprescriptible right of surface use in the nature of a servitude in favor of the Department of Natural Resources, including its Offices and Commissions, for the sole purpose of implementing, constructing, servicing and maintaining approved coastal zone management and/or restoration projects. Utilization of any and all rights derived under this lease by the mineral lessee, its agents, successors or assigns, shall not interfere with nor hinder the reasonable surface use by the Department of Natural Resources, its Offices or Commissions, as hereinabove reserved.

Applicant: Leslie L. Moore

Bidder	Cash Payment	Price / Acre	Rental	Oil	Gas	Other



OFFICIAL COPY
OFFICE OF MINERAL RESOURCES
DEPT. OF NATURAL RESOURCES
DO NOT REMOVE



NOT TO BE USED WITH A PORTION OF THE MAP FOR INFORMATIONAL PURPOSES

MAP NOT TO SCALE

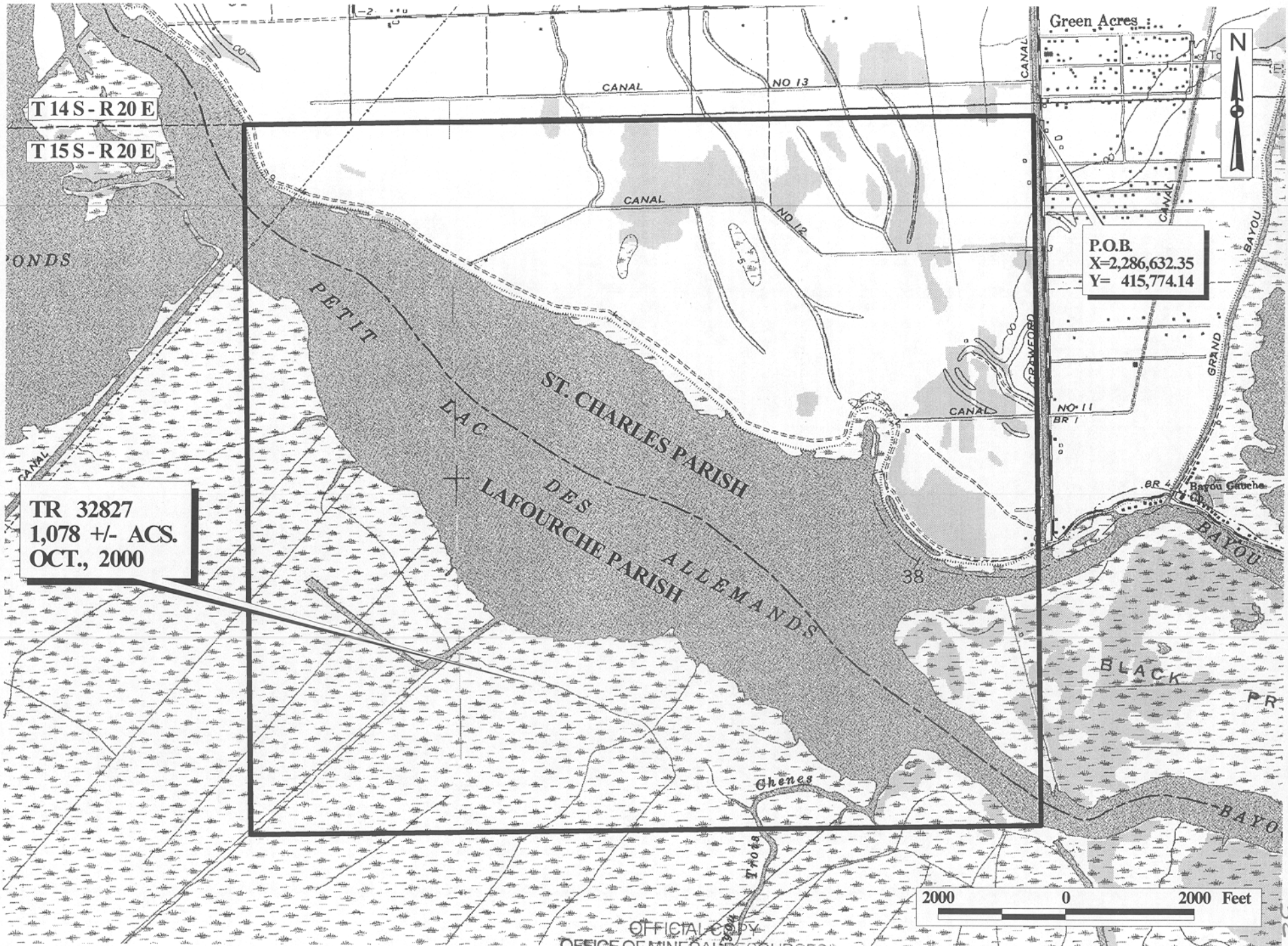
TRACT 32827 - Lafourche and St. Charles Parishes, Louisiana

All of the lands now or formerly constituting the beds and bottoms of all water bodies of every nature and description and all islands and other lands formed by accretion or reliction, except tax lands, owned by and not under mineral lease from the State of Louisiana on October 11, 2000, situated in Lafourche and St. Charles Parishes, Louisiana, within the following described boundaries: Beginning at a point having Coordinates of X = 2,286,632.35 and Y = 415,774.14; thence South 11,204.03 feet to a point having Coordinates of X = 2,286,632.35 and Y = 404,570.11; thence West 12,335.92 feet to a point having Coordinates of X = 2,274,296.43 and Y = 404,570.11; thence North 11,204.03 feet to a point having Coordinates of X = 2,274,296.43 and Y = 415,774.14; thence East 12,335.92 feet to the point of beginning, containing approximately **1,078 acres**, as shown outlined in red on a plat on file in the Office of Mineral Resources, Department of Natural Resources. All bearings, distances and coordinates are based on Louisiana Coordinate System of 1927 (South Zone).

NOTE: The State of Louisiana does hereby reserve, and this lease shall be subject to, the imprescriptible right of surface use in the nature of a servitude in favor of the Department of Natural Resources, including its Offices and Commissions, for the sole purpose of implementing, constructing, servicing and maintaining approved coastal zone management and/or restoration projects. Utilization of any and all rights derived under this lease by the mineral lessee, its agents, successors or assigns, shall not interfere with nor hinder the reasonable surface use by the Department of Natural Resources, its Offices or Commissions, as hereinabove reserved.

Applicant: MVP Production Inc.

Bidder	Cash Payment	Price / Acre	Rental	Oil	Gas	Other



T 14S - R 20 E

T 15S - R 20 E

TR 32827
1,078 +/- ACS.
OCT., 2000

P.O.B.
X=2,286,632.35
Y= 415,774.14

2000 0 2000 Feet

OFFICIAL COPY
OFFICE OF MINERAL RESOURCES
DEPT. OF NATURAL RESOURCES
DO NOT REMOVE